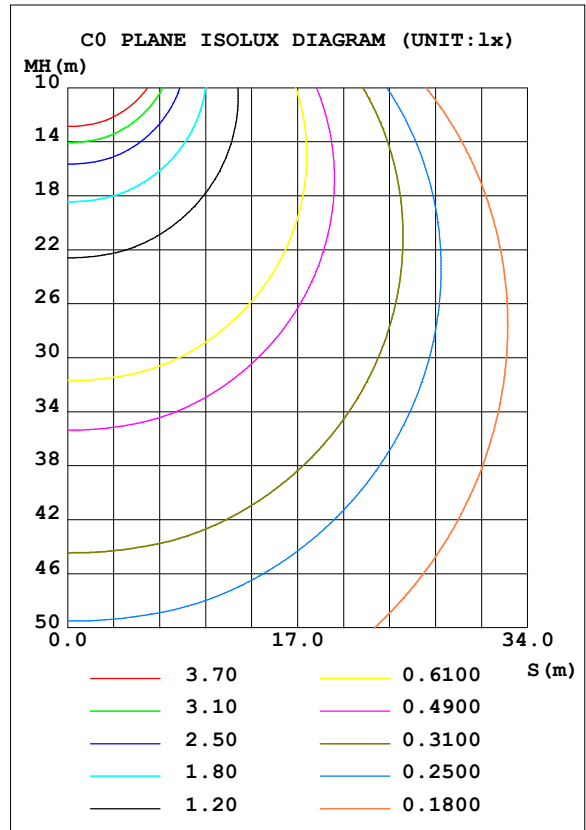
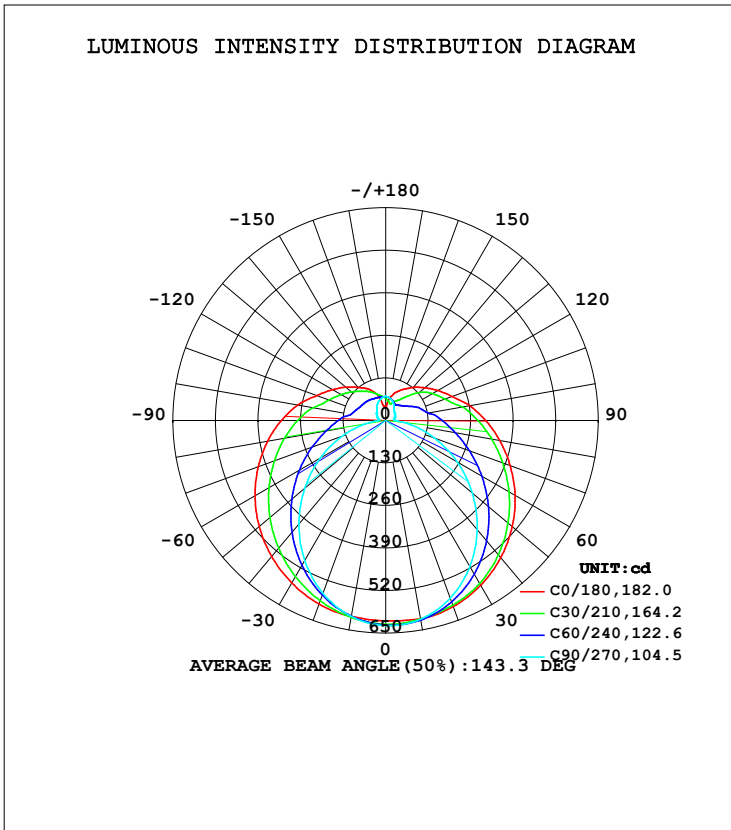


LUMINAIRE PHOTOMETRIC TEST REPORT

Test:U:120.5V I:0.2670A P:31.90W PF:0.9890 Freq:60.00Hz Lamp Flux:3097.33x1 lm		
NAME: LVF1R-48-34-95C-MVUD-BL 整灯 3000K	TYPE:	WEIGHT:
SPEC.:	DIM.:	SERIAL No.:
MFR.: 革星	SUR.:48寸	Shielding Angle:

DATA OF LAMP		PHOTOMETRIC DATA Eff: 97.09 lm/W			
MODEL		I _{max} (cd)	627.3	S/MH (C0/180)	1.41
NOMINAL POWER (W)		LOR (%)	100.0	S/MH (C90/270)	1.18
RATED VOLTAGE (V)		TOTAL FLUX (lm)	3097.3	η UP, DN (C0-180)	12.1, 38.5
NOMINAL FLUX (lm)	3097.33	CIE CLASS	SEMI-D.	η UP, DN (C180-360)	12.0, 37.4
LAMPS INSIDE	1	η up (%)	24.1	CIBSE SHR NOM	1.50
TEST VOLTAGE (V)		η down (%)	75.9	CIBSE SHR MAX	1.55



C Range: 0 - 360DEG
 C Interval: 30.0DEG
 Test Speed: HIGH
 Temperature: 25.3DEG
 Operators:
 Test Date: 2024-04-19

γ Range: 0 - 180DEG
 γ Interval: 1.0DEG
 Test System: EVERFINE GO-2000B_V1 SYSTEM V2.0.362
 Humidity: 65.0%
 Test Distance: 7.750m [K=1.0000]
 Remarks:

ZONAL FLUX DIAGRAM

ZONAL FLUX DIAGRAM:

γ	C0	C45	C90	C135	C180	C225	C270	C315	γ	Φ zone	Φ total	%lum, lamp
10	615.5	617.6	616.6	615.6	607.8	609.1	608.0	614.9	0- 10	59.03	59.03	1.91,1.91
20	605.2	595.2	577.5	585.1	596.9	577.0	561.8	584.4	10- 20	169.9	228.9	7.39,7.39
30	581.3	558.5	515.0	538.7	573.6	531.7	494.7	539.3	20- 30	260.8	489.7	15.8,15.8
40	547.4	508.2	435.6	480.8	542.4	477.3	413.0	482.0	30- 40	322.7	812.4	26.2,26.2
50	505.0	449.2	345.9	416.8	504.7	418.3	323.4	417.5	40- 50	351.9	1164	37.6,37.6
60	456.5	387.1	252.7	351.2	461.1	358.3	231.4	351.9	50- 60	350.1	1514	48.9,48.9
70	405.1	326.9	159.5	288.5	414.5	301.2	142.2	289.1	60- 70	323.1	1838	59.3,59.3
80	354.1	272.8	79.19	233.1	366.4	249.3	64.21	236.0	70- 80	280.1	2118	68.4,68.4
90	305.7	227.7	29.01	188.4	318.9	207.2	22.71	194.7	80- 90	233.0	2351	75.9,75.9
100	261.4	185.5	25.19	149.4	273.4	167.0	23.09	158.0	90-100	192.2	2543	82.1,82.1
110	215.8	152.2	29.83	123.6	223.7	140.3	27.47	132.7	100-110	152.8	2696	87,87
120	184.0	126.1	32.24	109.4	188.7	123.2	32.26	109.7	110-120	122.6	2818	91,91
130	156.0	101.7	36.22	99.34	159.1	110.3	37.04	87.45	120-130	95.77	2914	94.1,94.1
140	132.1	77.29	40.14	90.83	132.3	98.94	42.18	71.84	130-140	71.22	2985	96.4,96.4
150	110.3	64.38	51.95	83.75	112.2	89.55	54.12	63.63	140-150	50.97	3036	98,98
160	91.72	60.04	62.46	77.28	87.91	80.99	62.94	63.47	150-160	34.75	3071	99.1,99.1
170	69.57	64.59	70.26	73.66	47.57	75.08	70.11	69.16	160-170	19.98	3091	99.8,99.8
180	41.13	70.39	74.43	72.27	41.12	70.39	74.48	72.25	170-180	6.458	3097	100,100
DEG	LUMINOUS INTENSITY:cd									UNIT:lm		

Conical surface Flux(90deg): 986.71 lm

%lum = 31.9%
%lamp = 31.9%

Conical surface Flux(120deg): 1514.4 lm

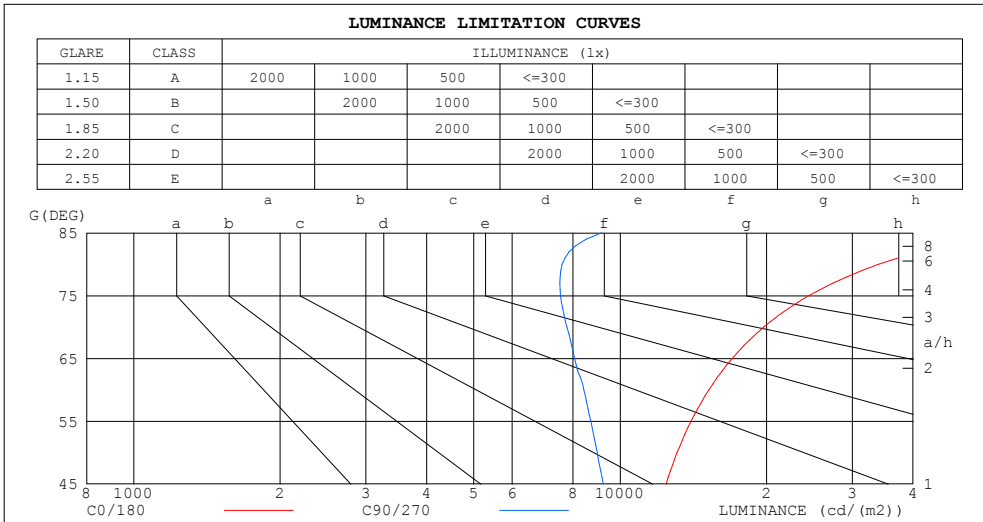
%lum = 48.9%
%lamp = 48.9%

C Range: 0 - 360DEG
C Interval: 30.0DEG
Test Speed: HIGH
Temperature:25.3DEG
Operators:
Test Date:2024-04-19

γ Range: 0 - 180DEG
 γ Interval: 1.0DEG
Test System:EVERFINE GO-2000B_V1 SYSTEM V2.0.362
Humidity:65.0%
Test Distance:7.750m [K=1.0000]
Remarks:

LUMINANCE LIMITATION CURVES

Test:U:120.5V I:0.2670A P:31.90W PF:0.9890 Freq:60.00Hz Lamp Flux:3097.33x1 lm		
NAME: LVF1R-48-34-95C-MVUD-BL 整灯 3000K	TYPE:	WEIGHT:
SPEC.:	DIM.:	SERIAL No.:
MFR.: 革星	SUR.: 48寸	Shielding Angle:



LUMINANCE cd/(m2)		
G (DEG)	C0/180	C90/270
85	62996	9147
80	33984	7601
75	24433	7535
70	19741	7774
65	16994	8060
60	15217	8423
55	13989	8700
50	13095	8969
45	12424	9232

C Range: 0 - 360DEG
 C Interval: 30.0DEG
 Test Speed: HIGH
 Temperature:25.3DEG
 Operators:
 Test Date:2024-04-19

γ Range: 0 - 180DEG
 γ Interval: 1.0DEG
 Test System:EVERFINE GO-2000B_V1 SYSTEM V2.0.362
 Humidity:65.0%
 Test Distance:7.750m [K=1.0000]
 Remarks:

WEC AND CCEC

Test:U:120.5V I:0.2670A P:31.90W PF:0.9890 Freq:60.00Hz Lamp Flux:3097.33x1 lm															
NAME: LVF1R-48-34-95C-MVUD-BL 整灯 3000K						TYPE:					WEIGHT:				
SPEC.:						DIM.:					SERIAL No.:				
MFR.: 革星						SUR.:48寸					Shielding Angle:				

pcc	80%			70%			50%			30%			10%			0
pw	50%	30%	10%	50%	30%	10%	50%	30%	10%	50%	30%	10%	50%	30%	10%	0
pfc	20%			20%			20%			20%			20%			0
RCR	RCR:Room Cavity Ratio						Wall Exitance Coefficients(WEC)									
0.0																
1.0	.383	.218	.069	.368	.210	.067	.341	.196	.062	.316	.182	.058	.293	.170	.055	
2.0	.330	.181	.055	.317	.174	.054	.292	.162	.050	.269	.151	.047	.248	.140	.044	
3.0	.293	.156	.047	.281	.150	.045	.258	.140	.043	.238	.130	.040	.218	.121	.037	
4.0	.263	.137	.040	.252	.132	.039	.232	.123	.037	.213	.114	.035	.196	.106	.032	
5.0	.239	.122	.035	.229	.118	.034	.211	.110	.032	.194	.102	.030	.177	.095	.028	
6.0	.219	.110	.031	.210	.106	.031	.193	.099	.029	.177	.092	.027	.162	.086	.025	
7.0	.202	.100	.028	.194	.097	.028	.178	.090	.026	.164	.084	.024	.150	.078	.023	
8.0	.188	.092	.026	.180	.089	.025	.166	.083	.024	.152	.077	.022	.139	.072	.021	
9.0	.175	.085	.024	.168	.082	.023	.155	.076	.022	.142	.071	.020	.130	.066	.019	
10.0	.164	.078	.022	.157	.076	.021	.145	.071	.020	.133	.066	.019	.122	.061	.018	

pcc	80%			70%			50%			30%			10%			0
pw	50%	30%	10%	50%	30%	10%	50%	30%	10%	50%	30%	10%	50%	30%	10%	0
pfc	20%			20%			20%			20%			20%			0
RCR	RCR:Room Cavity Ratio						Ceiling Cavity Exitance Coefficients(CCEC)									
0.0	.374	.374	.374	.320	.320	.320	.218	.218	.218	.125	.125	.125	.040	.040	.040	
1.0	.371	.341	.314	.317	.292	.270	.217	.201	.187	.125	.116	.109	.040	.037	.035	
2.0	.364	.318	.280	.312	.274	.242	.214	.189	.169	.123	.110	.099	.040	.036	.032	
3.0	.356	.302	.259	.305	.260	.224	.210	.181	.157	.121	.106	.093	.039	.034	.030	
4.0	.349	.290	.244	.299	.250	.212	.206	.174	.150	.119	.102	.088	.038	.033	.029	
5.0	.341	.280	.235	.293	.242	.204	.202	.169	.144	.117	.099	.086	.038	.032	.028	
6.0	.334	.272	.228	.287	.236	.198	.198	.165	.140	.115	.097	.083	.037	.032	.028	
7.0	.327	.266	.223	.281	.230	.194	.194	.161	.138	.113	.095	.082	.036	.031	.027	
8.0	.320	.260	.219	.276	.226	.191	.191	.158	.135	.111	.093	.081	.036	.031	.027	
9.0	.314	.255	.216	.270	.222	.188	.187	.156	.134	.109	.092	.080	.035	.030	.026	
10.0	.308	.251	.213	.266	.218	.186	.184	.154	.132	.107	.091	.079	.035	.030	.026	

C Range: 0 - 360DEG
 C Interval: 30.0DEG
 Test Speed: HIGH
 Temperature:25.3DEG
 Operators:
 Test Date:2024-04-19

γ Range: 0 - 180DEG
 γ Interval: 1.0DEG
 Test System:EVERFINE GO-2000B_V1 SYSTEM V2.0.362
 Humidity:65.0%
 Test Distance:7.750m [K=1.0000]
 Remarks:

UGR(Unified Glare Rating) Table

Test:U:120.5V I:0.2670A P:31.90W PF:0.9890 Freq:60.00Hz Lamp Flux:3097.33x1 lm										
NAME: LVF1R-48-34-95C-MVUD-BL 整灯 3000K					TYPE:			WEIGHT:		
SPEC.:					DIM.:			SERIAL No.:		
MFR.: 革星					SUR.:48寸			Shielding Angle:		
ceiling/cavity	0.7	0.7	0.5	0.5	0.3	0.7	0.7	0.5	0.5	0.3
walls	0.5	0.3	0.5	0.3	0.3	0.5	0.3	0.5	0.3	0.3
working plane	0.2	0.2	0.2	0.2	0.2	0.2	0.2	0.2	0.2	0.2
Room dimensions	Viewed crosswise					Viewed endwise				
x = 2H y = 2H	17.2	18.5	17.8	19.1	19.8	15.0	16.3	15.5	16.8	17.5
3H	19.9	21.1	20.5	21.7	22.4	16.6	17.7	17.2	18.4	19.1
4H	21.4	22.5	22.0	23.1	23.9	17.3	18.4	17.9	19.0	19.8
6H	23.0	24.1	23.7	24.8	25.5	17.9	18.9	18.5	19.6	20.3
8H	24.0	25.0	24.6	25.7	26.4	18.1	19.1	18.8	19.8	20.6
12H	25.0	26.0	25.7	26.7	27.5	18.3	19.3	19.0	20.0	20.8
4H 2H	17.8	18.9	18.4	19.5	20.3	16.2	17.3	16.8	18.0	18.7
3H	20.7	21.7	21.4	22.4	23.2	18.1	19.1	18.8	19.8	20.6
4H	22.4	23.3	23.1	24.0	24.9	19.0	19.9	19.7	20.6	21.5
6H	24.3	25.1	25.0	25.8	26.7	19.9	20.7	20.6	21.4	22.3
8H	25.4	26.1	26.1	26.9	27.7	20.2	21.0	21.0	21.7	22.6
12H	26.6	27.3	27.3	28.0	28.9	20.6	21.3	21.3	22.0	22.9
8H 4H	22.8	23.6	23.6	24.3	25.2	20.2	21.0	20.9	21.7	22.6
6H	25.0	25.7	25.8	26.4	27.3	21.5	22.1	22.2	22.9	23.8
8H	26.3	26.9	27.1	27.7	28.6	22.1	22.7	22.9	23.4	24.4
12H	27.8	28.3	28.6	29.1	30.0	22.7	23.2	23.4	24.0	24.9
12H 4H	22.9	23.6	23.6	24.3	25.2	20.6	21.3	21.3	22.0	22.9
6H	25.2	25.8	26.0	26.5	27.5	22.1	22.7	22.9	23.4	24.4
8H	26.6	27.1	27.4	27.9	28.8	22.9	23.4	23.7	24.2	25.1
Variations with the observer position at spacings:										
S = 1.0H	+ 0.1 / - 0.1					+ 0.1 / - 0.1				
1.5H	+ 0.2 / - 0.3					+ 0.2 / - 0.3				
2.0H	+ 0.3 / - 0.4					+ 0.3 / - 0.4				

CIE Pub.117, 3097 lm Total Lamp Luminous Flux Correct (8log(F/F0) = 3.9)

C Range: 0 - 360DEG
 C Interval: 30.0DEG
 Test Speed: HIGH
 Temperature:25.3DEG
 Operators:
 Test Date:2024-04-19

γ Range: 0 - 180DEG
 γ Interval: 1.0DEG
 Test System:EVERFINE GO-2000B_V1 SYSTEM V2.0.362
 Humidity:65.0%
 Test Distance:7.750m [K=1.0000]
 Remarks:

UTILIZATION FACTORS TABLE

Test:U:120.5V I:0.2670A P:31.90W PF:0.9890 Freq:60.00Hz Lamp Flux:3097.33x1 lm		
NAME: LVF1R-48-34-95C-MVUD-BL 整灯 3000K	TYPE:	WEIGHT:
SPEC.:	DIM.:	SERIAL No.:
MFR.: 革星	SUR.:48寸	Shielding Angle:

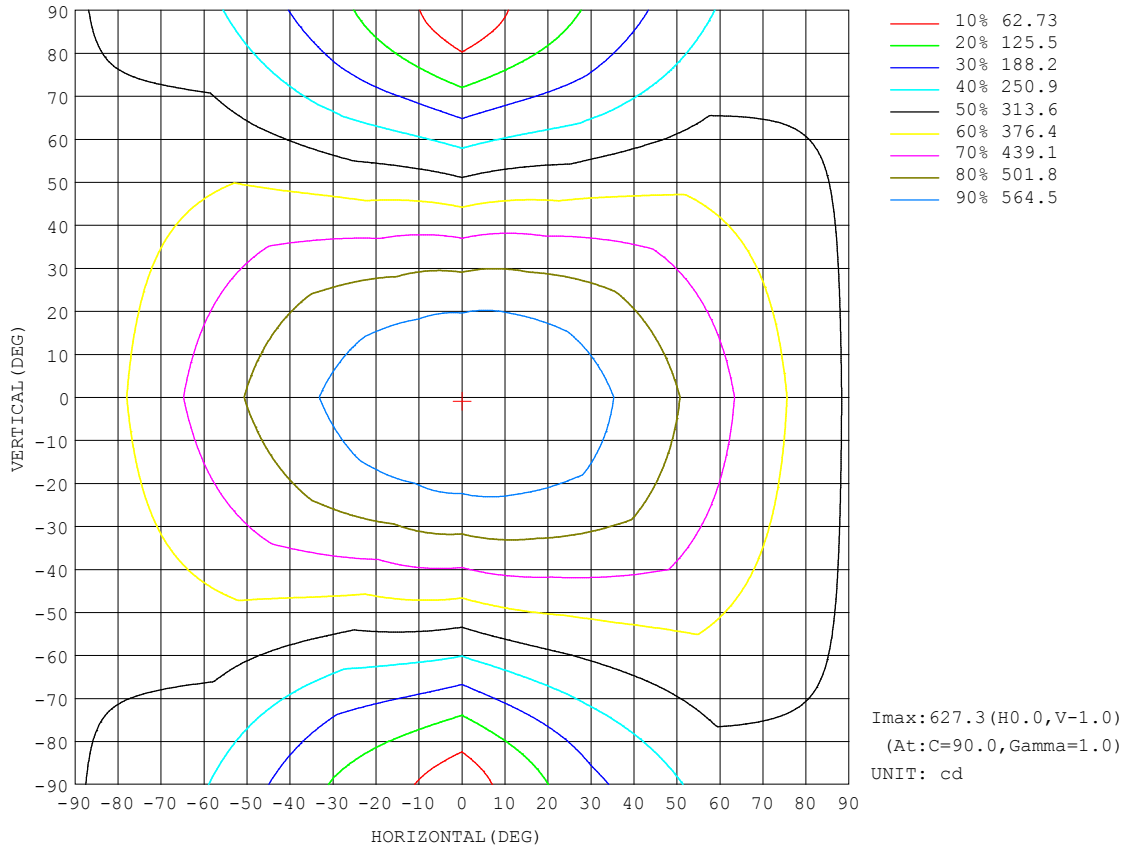
REFLECTANCE										
Ceiling	0.8	0.8	0.8	0.7	0.7	0.7	0.5	0.5	0.5	0
Walls	0.7	0.5	0.3	0.7	0.5	0.3	0.7	0.5	0.3	0
Working plane	0.2	0.2	0.2	0.2	0.2	0.2	0.2	0.2	0.2	0
ROOM INDEX	UTILIZATION FACTORS (PERCENT) $k(RI) \times RCR = 5$									
k = 0.60	46	34	27	45	33	26	43	32	26	19
0.80	55	42	34	53	41	34	50	40	33	24
1.00	63	50	41	61	49	41	57	49	39	30
1.25	70	57	48	67	55	47	62	52	45	35
1.50	75	63	54	72	61	53	66	57	50	39
2.00	82	71	63	79	68	61	72	64	57	44
2.50	87	76	68	83	73	66	76	68	62	48
3.00	90	81	73	86	78	71	79	72	66	51
4.00	95	87	80	91	83	77	83	77	72	56
5.00	98	91	85	94	87	82	85	80	76	59
ROOM INDEX	UF(total)									Direct
According to DIN EN 13032-2 2004			Suspended				SHRNOM = 1.25			

C Range: 0 - 360DEG
 C Interval: 30.0DEG
 Test Speed: HIGH
 Temperature:25.3DEG
 Operators:
 Test Date:2024-04-19

γ Range: 0 - 180DEG
 γ Interval: 1.0DEG
 Test System:EVERFINE GO-2000B_V1 SYSTEM V2.0.362
 Humidity:65.0%
 Test Distance:7.750m [K=1.0000]
 Remarks:

ISOCANDELA DIAGRAM

Test:U:120.5V I:0.2670A P:31.90W PF:0.9890 Freq:60.00Hz Lamp Flux:3097.33x1 lm		
NAME: LVF1R-48-34-95C-MVUD-BL 整灯 3000K	TYPE:	WEIGHT:
SPEC.:	DIM.:	SERIAL No.:
MFR.: 革星	SUR.:48寸	Shielding Angle:

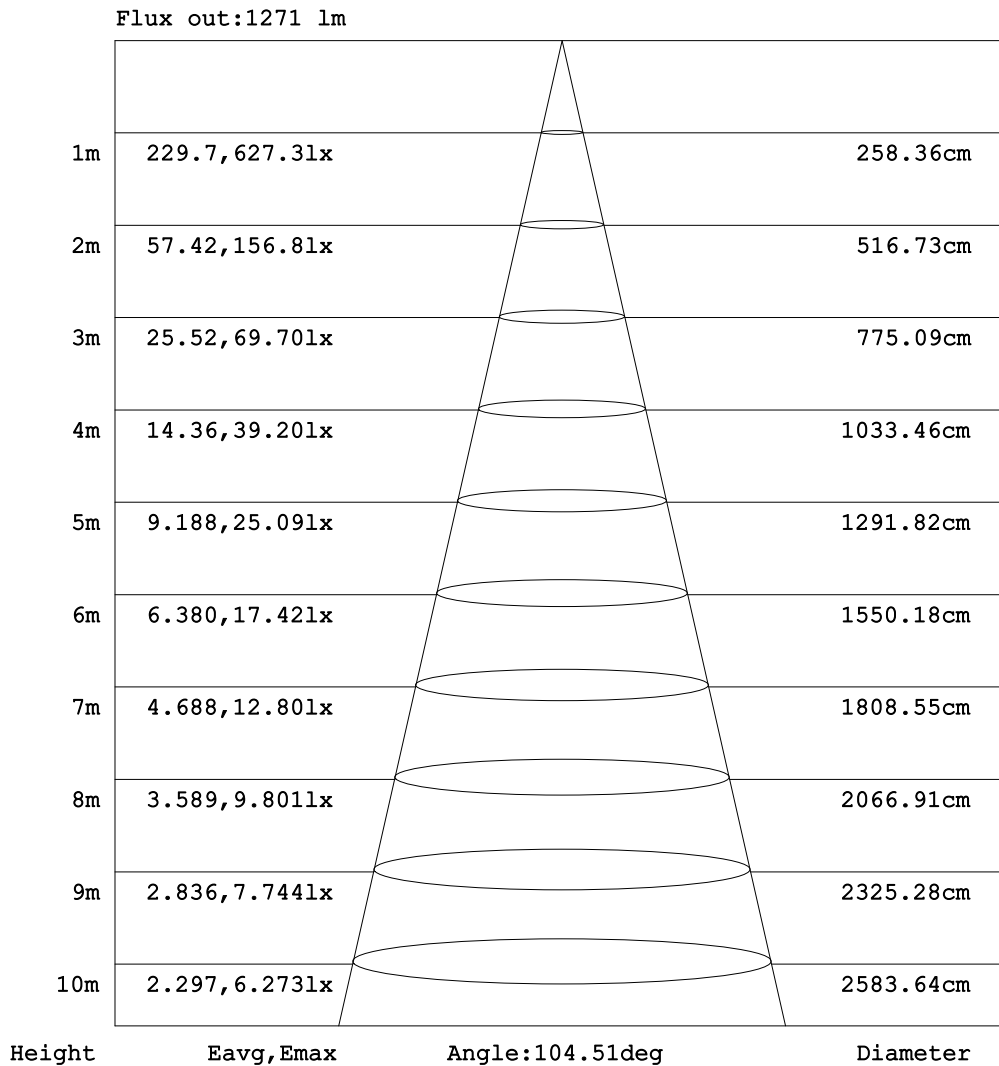


C Range: 0 - 360DEG
 C Interval: 30.0DEG
 Test Speed: HIGH
 Temperature: 25.3DEG
 Operators:
 Test Date: 2024-04-19

γ Range: 0 - 180DEG
 γ Interval: 1.0DEG
 Test System: EVERFINE GO-2000B_V1 SYSTEM V2.0.362
 Humidity: 65.0%
 Test Distance: 7.750m [K=1.0000]
 Remarks:

AAI Figure

Test:U:120.5V I:0.2670A P:31.90W PF:0.9890 Freq:60.00Hz Lamp Flux:3097.33x1 lm		
NAME: LVF1R-48-34-95C-MVUD-BL 整灯 3000K	TYPE:	WEIGHT:
SPEC.:	DIM.:	SERIAL No.:
MFR.: 革星	SUR.:48寸	Shielding Angle:

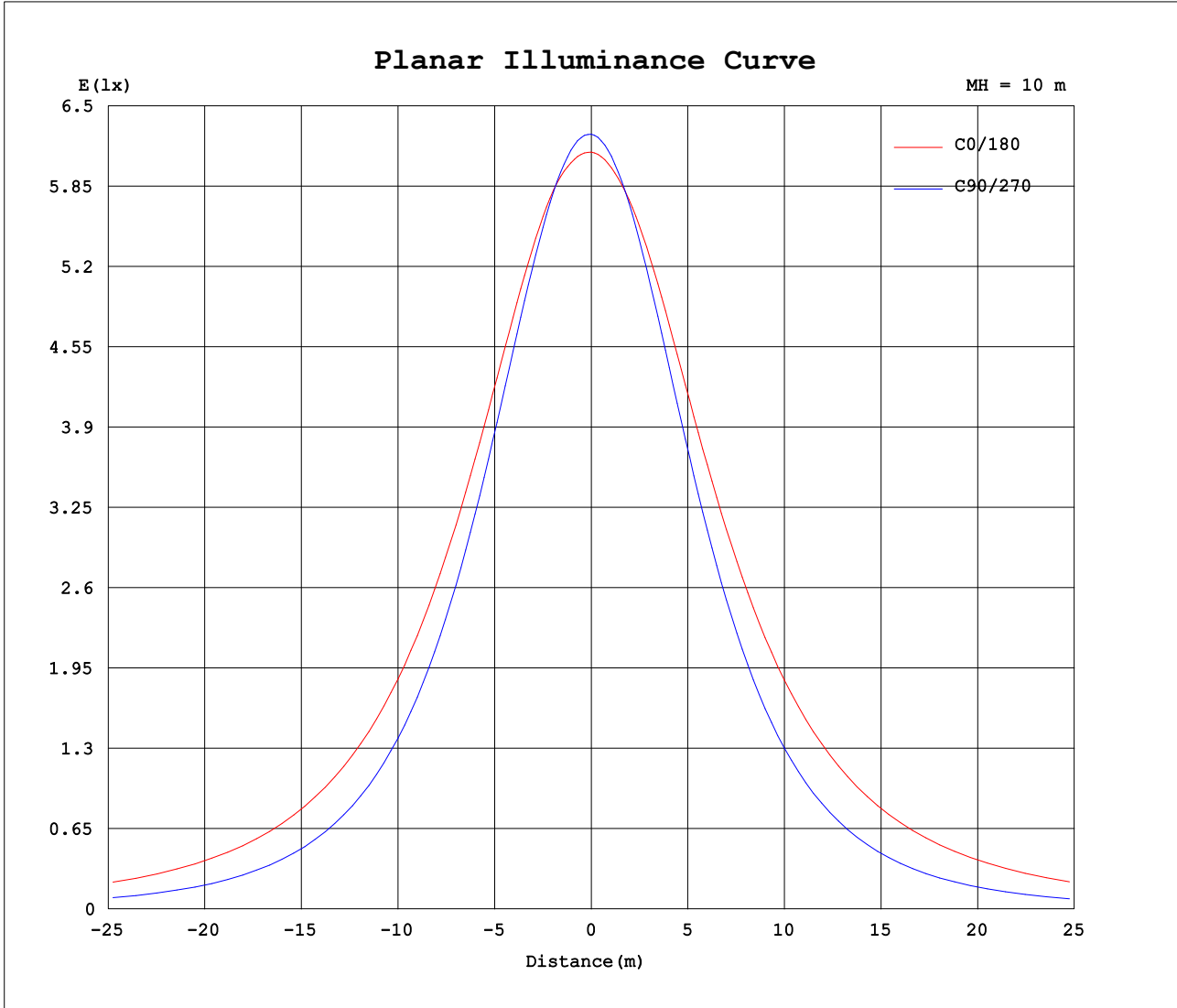


Note: The Curves indicate the illuminated area and the average illumination when the luminaire is at different distance.

C Range: 0 - 360DEG
 C Interval: 30.0DEG
 Test Speed: HIGH
 Temperature:25.3DEG
 Operators:
 Test Date:2024-04-19

γ Range: 0 - 180DEG
 γ Interval: 1.0DEG
 Test System:EVERFINE GO-2000B_V1 SYSTEM V2.0.362
 Humidity:65.0%
 Test Distance:7.750m [K=1.0000]
 Remarks:

Planar Illuminance Curve



C Range: 0 - 360DEG
 C Interval: 30.0DEG
 Test Speed: HIGH
 Temperature:25.3DEG
 Operators:
 Test Date:2024-04-19

γ Range: 0 - 180DEG
 γ Interval: 1.0DEG
 Test System:EVERFINE GO-2000B_V1 SYSTEM V2.0.362
 Humidity:65.0%
 Test Distance:7.750m [K=1.0000]
 Remarks:

LUMINOUS DISTRIBUTION INTENSITY DATA

Test:U:120.5V I:0.2670A P:31.90W PF:0.9890 Freq:60.00Hz Lamp Flux:3097.33x1 lm		
NAME: LVF1R-48-34-95C-MVUD-BL 整灯 3000K	TYPE:	WEIGHT:
SPEC.:	DIM.:	SERIAL No.:
MFR.: 革星	SUR.:48寸	Shielding Angle:

Table--1

UNIT: cd

C (DEG) \ γ (DEG)	0	30	60	90	120	150	180	210	240	270	300	330							
0	613	623	625	627	627	625	613	623	625	627	627	625							
5	614	622	625	625	624	623	610	618	619	621	624	623							
10	615	616	619	617	615	616	608	611	607	608	614	616							
15	612	609	607	600	599	606	604	600	590	588	598	605							
20	605	600	590	578	579	592	597	586	568	562	576	593							
25	595	589	568	549	553	575	587	570	541	531	550	577							
30	581	575	542	515	522	555	574	551	512	495	519	559							
35	566	557	512	477	489	533	559	531	480	455	486	538							
40	547	536	480	436	452	509	542	509	445	413	450	514							
45	527	513	446	392	414	484	524	486	410	369	412	488							
50	505	488	410	346	375	458	505	462	375	323	374	461							
55	481	462	374	299	336	432	483	437	339	277	336	433							
60	457	435	339	253	298	404	461	412	305	231	299	405							
65	431	408	305	204	261	378	438	387	271	186	263	377							
70	405	381	273	160	226	351	414	362	240	142	228	350							
75	379	355	243	117	193	326	391	338	210	100	198	324							
80	354	329	216	79.2	165	302	366	314	185	64.2	172	300							
85	329	305	193	47.8	140	278	343	291	163	35.6	151	277							
90	306	282	173	29.0	121	256	319	269	145	22.7	134	256							
95	283	261	157	25.4	106	235	296	249	130	21.6	120	236							
100	261	239	132	25.2	87.5	211	273	226	108	23.1	102	214							
105	237	210	120	27.8	80.9	184	248	200	102	25.3	94.8	191							
110	216	193	111	29.8	76.8	170	224	185	96.0	27.5	88.6	177							
115	199	179	99.9	30.6	74.2	157	206	171	91.6	29.7	79.7	162							
120	184	165	87.1	32.2	72.8	146	189	158	88.0	32.3	72.3	147							
125	170	151	77.3	34.3	72.6	136	174	147	85.8	34.7	66.1	131							
130	156	133	70.5	36.2	72.5	126	159	136	84.3	37.0	61.7	113							
135	144	113	65.1	38.1	72.1	118	144	126	82.8	39.2	58.9	98.9							
140	132	93.3	61.3	40.1	71.4	110	132	117	81.0	42.2	56.7	87.0							
145	120	79.5	57.7	45.5	70.7	104	122	109	78.8	47.9	56.7	76.1							
150	110	70.8	57.9	52.0	70.6	96.9	112	102	77.0	54.1	60.2	67.1							
155	101	63.9	60.4	57.7	71.1	89.9	100.0	94.7	75.6	58.8	63.5	61.2							
160	91.7	56.3	63.8	62.5	71.4	83.2	87.9	87.2	74.8	62.9	66.6	60.3							
165	79.8	53.2	67.5	66.6	71.5	78.4	70.0	80.8	74.3	66.7	69.1	63.9							
170	69.6	58.6	70.6	70.3	72.0	75.3	47.6	76.4	73.7	70.1	71.2	67.1							
175	50.6	63.1	72.1	72.7	72.3	72.5	42.8	72.5	72.8	73.0	72.9	68.9							
180	41.1	67.7	73.1	74.4	73.8	70.7	41.1	67.7	73.0	74.5	73.8	70.7							

C Range: 0 - 360DEG
 C Interval: 30.0DEG
 Test Speed: HIGH
 Temperature:25.3DEG
 Operators:
 Test Date:2024-04-19

γ Range: 0 - 180DEG
 γ Interval: 1.0DEG
 Test System:EVERFINE GO-2000B_V1 SYSTEM V2.0.362
 Humidity:65.0%
 Test Distance:7.750m [K=1.0000]
 Remarks: