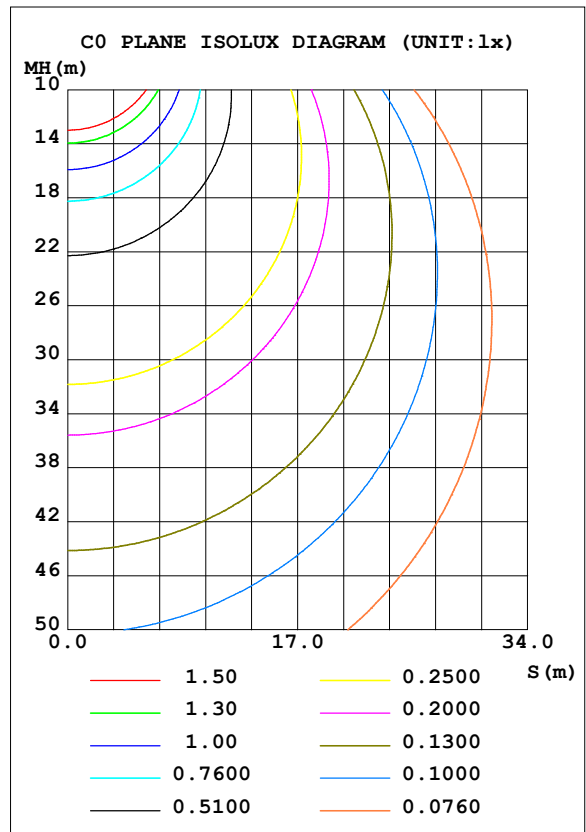
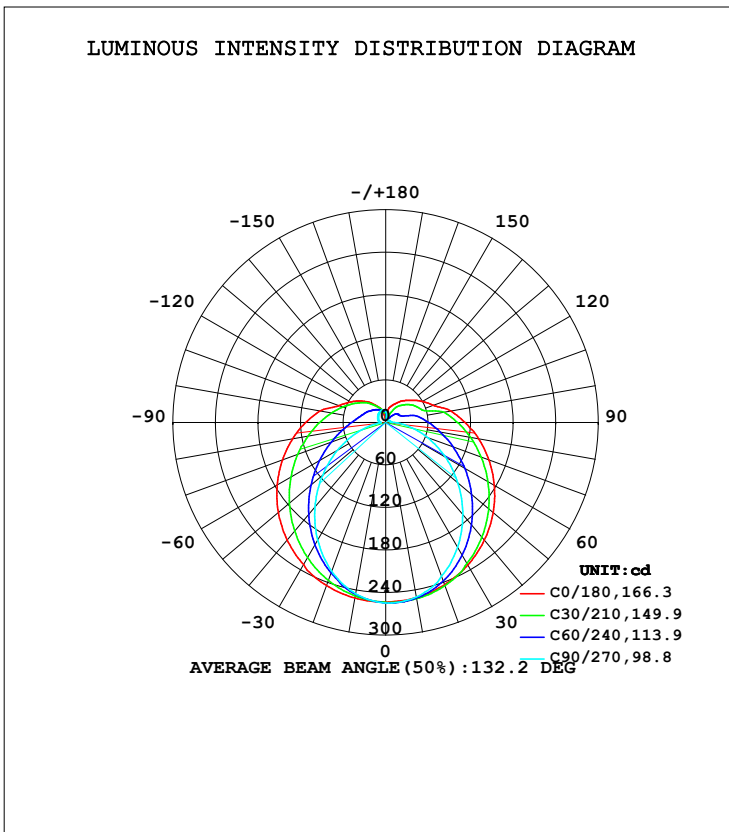


LUMINAIRE PHOTOMETRIC TEST REPORT

Test:U:120.5V I:0.0980A P:11.60W PF:0.9750 Freq:60.00Hz Lamp Flux:1134.38x1 lm		
NAME: LVS1R-14-12-95C-MVUD-BL 整灯 4000K	TYPE:	WEIGHT:
SPEC.:	DIM.:	SERIAL No.:
MFR.: 革星	SUR.:14寸	Shielding Angle:

DATA OF LAMP		PHOTOMETRIC DATA Eff: 97.79 lm/W			
MODEL		I _{max} (cd)	254.8	S/MH (C0/180)	1.37
NOMINAL POWER (W)		LOR (%)	100.0	S/MH (C90/270)	1.14
RATED VOLTAGE (V)		TOTAL FLUX (lm)	1134.4	η UP, DN (C0-180)	9.5, 40.6
NOMINAL FLUX (lm)	1134.38	CIE CLASS	SEMI-D.	η UP, DN (C180-360)	11.3, 38.5
LAMPS INSIDE	1	η up (%)	20.9	CIBSE SHR NOM	1.50
TEST VOLTAGE (V)		η down (%)	79.1	CIBSE SHR MAX	1.50



C Range: 0 - 360DEG
 C Interval: 30.0DEG
 Test Speed: HIGH
 Temperature: 25.3DEG
 Operators:
 Test Date: 2024-04-15

γ Range: 0 - 180DEG
 γ Interval: 1.0DEG
 Test System: EVERFINE GO-2000B_V1 SYSTEM V2.0.362
 Humidity: 65.0%
 Test Distance: 7.750m [K=1.0000]
 Remarks:

ZONAL FLUX DIAGRAM

ZONAL FLUX DIAGRAM:

γ	C0	C45	C90	C135	C180	C225	C270	C315	γ	Φ zone	Φ total	%lum, lamp
10	250.8	251.9	249.9	249.2	251.4	247.3	245.2	247.8	0- 10	24.00	24.00	2.12,2.12
20	243.5	241.5	230.7	235.9	244.6	231.3	223.2	232.5	10- 20	68.68	92.68	8.17,8.17
30	232.1	222.7	203.1	214.2	231.7	209.9	191.9	210.9	20- 30	104.1	196.8	17.3,17.3
40	216.6	199.7	169.3	188.6	216.3	184.4	155.3	185.1	30- 40	126.7	323.5	28.5,28.5
50	198.0	174.0	133.0	160.7	197.7	157.5	115.8	157.6	40- 50	135.9	459.4	40.5,40.5
60	176.9	147.8	96.95	132.4	176.7	131.1	78.50	130.8	50- 60	132.7	592.1	52.2,52.2
70	155.0	122.3	62.98	106.4	155.0	107.1	44.02	106.4	60- 70	120.1	712.2	62.8,62.8
80	133.3	99.90	33.08	83.62	133.3	86.45	16.58	85.76	70- 80	102.2	814.4	71.8,71.8
90	112.0	80.99	11.61	65.39	112.8	70.74	8.039	70.27	80- 90	83.36	897.8	79.1,79.1
100	93.53	65.54	7.247	51.45	94.03	58.73	9.950	58.68	90-100	67.63	965.4	85.1,85.1
110	71.60	40.79	5.578	31.13	70.13	49.28	11.86	49.78	100-110	51.26	1017	89.6,89.6
120	59.72	34.46	4.984	25.78	58.06	41.86	13.48	43.05	110-120	38.16	1055	93,93
130	49.05	29.53	4.666	22.67	47.38	35.10	14.88	37.13	120-130	29.64	1084	95.6,95.6
140	40.43	21.15	4.192	19.86	37.75	29.17	16.19	31.83	130-140	21.56	1106	97.5,97.5
150	32.09	12.50	3.997	17.67	27.93	23.97	17.31	27.20	140-150	14.38	1120	98.8,98.8
160	25.17	5.572	4.332	14.89	20.72	19.12	18.06	23.44	150-160	8.458	1129	99.5,99.5
170	16.04	6.311	10.04	13.23	7.015	15.96	18.14	19.72	160-170	4.250	1133	99.9,99.9
180	4.647	13.34	16.53	16.27	4.647	13.44	16.51	16.21	170-180	1.245	1134	100,100
DEG	LUMINOUS INTENSITY:cd									UNIT:lm		

Conical surface Flux(90deg): 391.14 lm

%lum = 34.5%
%lamp = 34.5%

Conical surface Flux(120deg): 592.09 lm

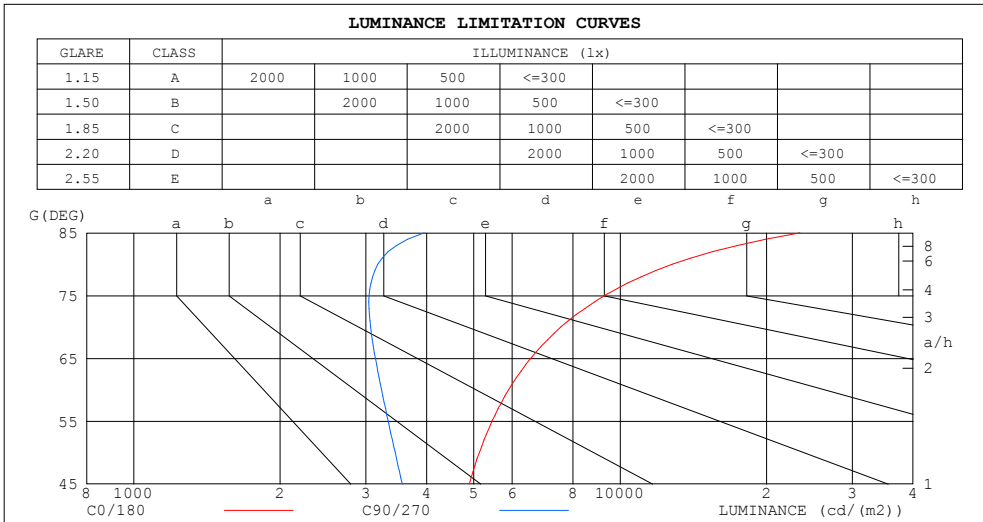
%lum = 52.2%
%lamp = 52.2%

C Range: 0 - 360DEG
C Interval: 30.0DEG
Test Speed: HIGH
Temperature:25.3DEG
Operators:
Test Date:2024-04-15

γ Range: 0 - 180DEG
γ Interval: 1.0DEG
Test System:EVERFINE GO-2000B_V1 SYSTEM V2.0.362
Humidity:65.0%
Test Distance:7.750m [K=1.0000]
Remarks:

LUMINANCE LIMITATION CURVES

Test:U:120.5V I:0.0980A P:11.60W PF:0.9750 Freq:60.00Hz Lamp Flux:1134.38x1 lm		
NAME: LVS1R-14-12-95C-MVUD-BL 整灯 4000K	TYPE:	WEIGHT:
SPEC.:	DIM.:	SERIAL No.:
MFR.: 革星	SUR.:14寸	Shielding Angle:



C Range: 0 - 360DEG
 C Interval: 30.0DEG
 Test Speed: HIGH
 Temperature:25.3DEG
 Operators:
 Test Date:2024-04-15

γ Range: 0 - 180DEG
 γ Interval: 1.0DEG
 Test System:EVERFINE GO-2000B_V1 SYSTEM V2.0.362
 Humidity:65.0%
 Test Distance:7.750m [K=1.0000]
 Remarks:

WEC AND CCEC

Test:U:120.5V I:0.0980A P:11.60W PF:0.9750 Freq:60.00Hz Lamp Flux:1134.38x1 lm														
NAME: LVS1R-14-12-95C-MVUD-BL 整灯 4000K					TYPE:					WEIGHT:				
SPEC.:					DIM.:					SERIAL No.:				
MFR.: 革星					SUR.:14寸					Shielding Angle:				

pcc	80%			70%			50%			30%			10%			0
pw	50%	30%	10%	50%	30%	10%	50%	30%	10%	50%	30%	10%	50%	30%	10%	0
pfc	20%			20%			20%			20%			20%			0
RCR	RCR:Room Cavity Ratio						Wall Exitance Coefficients(WEC)									
0.0																
1.0	.380	.216	.068	.366	.209	.066	.341	.195	.062	.317	.183	.059	.296	.171	.055	
2.0	.328	.180	.055	.316	.174	.054	.293	.163	.051	.272	.152	.048	.252	.143	.045	
3.0	.292	.155	.046	.281	.150	.045	.260	.141	.043	.241	.132	.040	.223	.123	.038	
4.0	.263	.137	.040	.253	.132	.039	.234	.124	.037	.216	.116	.035	.200	.109	.033	
5.0	.239	.122	.035	.230	.118	.034	.213	.111	.033	.197	.104	.031	.182	.097	.029	
6.0	.219	.110	.031	.211	.106	.031	.195	.100	.029	.180	.094	.028	.167	.088	.026	
7.0	.202	.100	.028	.195	.097	.028	.180	.091	.026	.167	.085	.025	.154	.080	.024	
8.0	.188	.092	.026	.181	.089	.025	.167	.084	.024	.155	.079	.023	.143	.074	.021	
9.0	.175	.085	.024	.169	.082	.023	.156	.077	.022	.145	.073	.021	.134	.068	.020	
10.0	.164	.079	.022	.158	.076	.021	.147	.072	.020	.136	.067	.019	.126	.063	.018	

pcc	80%			70%			50%			30%			10%			0
pw	50%	30%	10%	50%	30%	10%	50%	30%	10%	50%	30%	10%	50%	30%	10%	0
pfc	20%			20%			20%			20%			20%			0
RCR	RCR:Room Cavity Ratio						Ceiling Cavity Exitance Coefficients(CCEC)									
0.0	.349	.349	.349	.299	.299	.299	.204	.204	.204	.117	.117	.117	.037	.037	.037	
1.0	.345	.316	.289	.295	.271	.249	.202	.186	.172	.116	.108	.100	.037	.035	.032	
2.0	.338	.293	.255	.290	.252	.220	.199	.175	.154	.115	.102	.090	.037	.033	.029	
3.0	.331	.277	.233	.284	.239	.202	.195	.166	.142	.112	.097	.084	.036	.031	.027	
4.0	.323	.264	.219	.277	.228	.190	.191	.159	.134	.110	.093	.079	.035	.030	.026	
5.0	.315	.254	.209	.271	.220	.182	.187	.154	.129	.108	.090	.076	.035	.029	.025	
6.0	.308	.246	.202	.265	.213	.176	.183	.149	.125	.106	.088	.074	.034	.029	.024	
7.0	.301	.240	.197	.259	.208	.172	.179	.146	.122	.104	.086	.072	.034	.028	.024	
8.0	.294	.234	.193	.253	.203	.168	.175	.143	.119	.102	.084	.071	.033	.028	.024	
9.0	.288	.230	.190	.248	.199	.166	.172	.140	.118	.100	.083	.070	.032	.027	.023	
10.0	.282	.225	.188	.243	.196	.164	.169	.138	.116	.099	.081	.069	.032	.027	.023	

C Range: 0 - 360DEG
 C Interval: 30.0DEG
 Test Speed: HIGH
 Temperature:25.3DEG
 Operators:
 Test Date:2024-04-15

γ Range: 0 - 180DEG
 γ Interval: 1.0DEG
 Test System:EVERFINE GO-2000B_V1 SYSTEM V2.0.362
 Humidity:65.0%
 Test Distance:7.750m [K=1.0000]
 Remarks:

UGR(Unified Glare Rating) Table

Test:U:120.5V I:0.0980A P:11.60W PF:0.9750 Freq:60.00Hz Lamp Flux:1134.38x1 lm										
NAME: LVS1R-14-12-95C-MVUD-BL 整灯 4000K					TYPE:			WEIGHT:		
SPEC.:					DIM.:			SERIAL No.:		
MFR.: 革星					SUR.:14寸			Shielding Angle:		
ceiling/cavity	0.7	0.7	0.5	0.5	0.3	0.7	0.7	0.5	0.5	0.3
walls	0.5	0.3	0.5	0.3	0.3	0.5	0.3	0.5	0.3	0.3
working plane	0.2	0.2	0.2	0.2	0.2	0.2	0.2	0.2	0.2	0.2
Room dimensions	Viewed crosswise					Viewed endwise				
x = 2H y = 2H	17.6	19.0	18.2	19.5	20.1	15.3	16.7	15.9	17.2	17.8
3H	20.3	21.5	20.8	22.1	22.7	16.9	18.2	17.5	18.7	19.4
4H	21.7	22.9	22.3	23.5	24.2	17.7	18.8	18.3	19.4	20.1
6H	23.4	24.5	24.0	25.1	25.8	18.3	19.4	18.9	20.0	20.7
8H	24.3	25.3	24.9	26.0	26.7	18.6	19.6	19.2	20.2	21.0
12H	25.3	26.3	26.0	27.0	27.7	18.8	19.8	19.4	20.5	21.2
4H 2H	18.2	19.3	18.8	19.9	20.6	16.5	17.7	17.1	18.3	19.0
3H	21.1	22.1	21.7	22.7	23.5	18.4	19.5	19.1	20.1	20.8
4H	22.8	23.7	23.4	24.4	25.1	19.4	20.3	20.0	21.0	21.7
6H	24.6	25.4	25.3	26.1	26.9	20.2	21.1	20.9	21.7	22.5
8H	25.6	26.4	26.3	27.1	27.9	20.6	21.4	21.3	22.1	22.9
12H	26.8	27.5	27.5	28.3	29.1	21.0	21.7	21.7	22.4	23.2
8H 4H	23.1	23.9	23.8	24.6	25.4	20.5	21.3	21.2	22.0	22.8
6H	25.3	26.0	26.0	26.7	27.5	21.7	22.4	22.5	23.1	24.0
8H	26.6	27.1	27.3	27.9	28.8	22.3	22.9	23.1	23.7	24.6
12H	28.0	28.5	28.7	29.3	30.2	22.9	23.4	23.7	24.2	25.1
12H 4H	23.2	23.9	23.9	24.6	25.4	20.8	21.6	21.6	22.3	23.1
6H	25.4	26.0	26.2	26.8	27.6	22.3	22.9	23.1	23.6	24.5
8H	26.8	27.3	27.6	28.1	29.0	23.1	23.6	23.9	24.4	25.3
Variations with the observer position at spacings:										
S = 1.0H	+ 0.1 / - 0.1					+ 0.1 / - 0.1				
1.5H	+ 0.2 / - 0.3					+ 0.2 / - 0.3				
2.0H	+ 0.2 / - 0.4					+ 0.3 / - 0.4				

CIE Pub.117, 1134 lm Total Lamp Luminous Flux Correct (8log(F/F0) = 0.4)

C Range: 0 - 360DEG
 C Interval: 30.0DEG
 Test Speed: HIGH
 Temperature:25.3DEG
 Operators:
 Test Date:2024-04-15

γ Range: 0 - 180DEG
 γ Interval: 1.0DEG
 Test System:EVERFINE GO-2000B_V1 SYSTEM V2.0.362
 Humidity:65.0%
 Test Distance:7.750m [K=1.0000]
 Remarks:

UTILIZATION FACTORS TABLE

Test:U:120.5V I:0.0980A P:11.60W PF:0.9750 Freq:60.00Hz Lamp Flux:1134.38x1 lm		
NAME: LVS1R-14-12-95C-MVUD-BL 整灯 4000K	TYPE:	WEIGHT:
SPEC.:	DIM.:	SERIAL No.:
MFR.: 革星	SUR.:14寸	Shielding Angle:

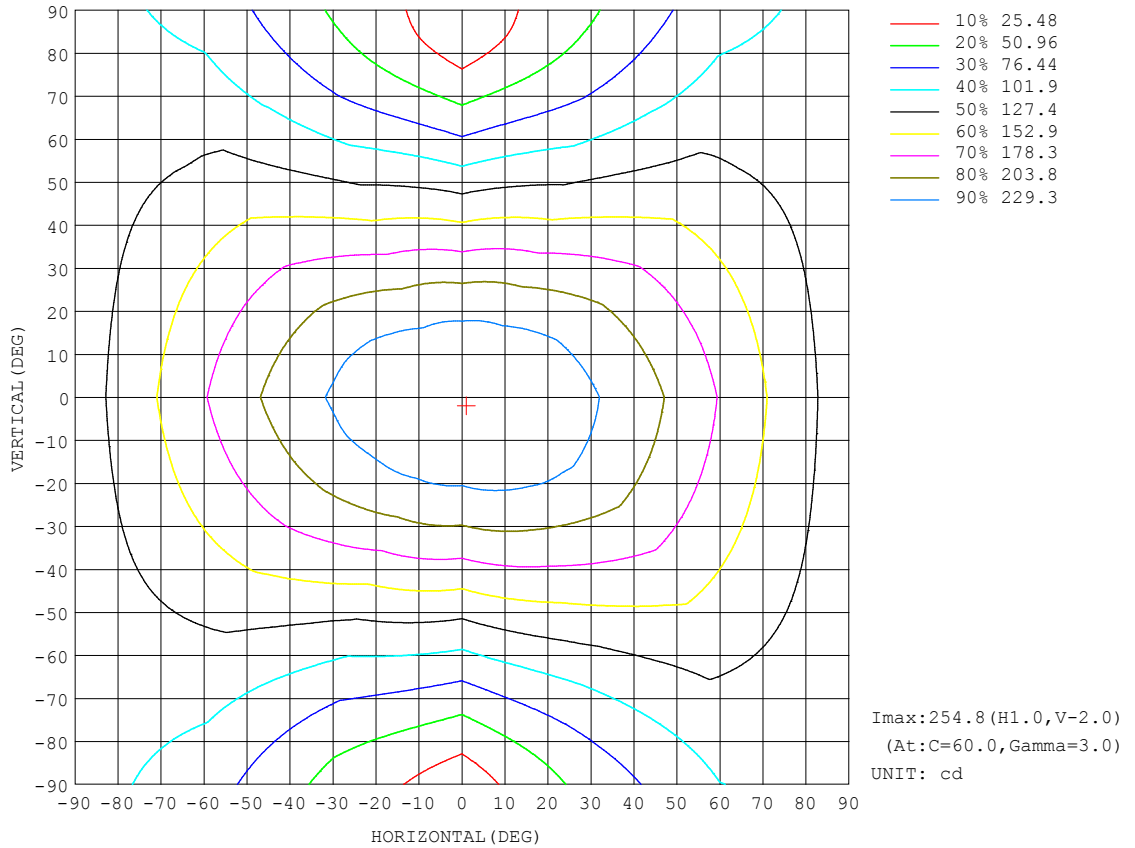
REFLECTANCE										
Ceiling	0.8	0.8	0.8	0.7	0.7	0.7	0.5	0.5	0.5	0
Walls	0.7	0.5	0.3	0.7	0.5	0.3	0.7	0.5	0.3	0
Working plane	0.2	0.2	0.2	0.2	0.2	0.2	0.2	0.2	0.2	0
ROOM INDEX	UTILIZATION FACTORS (PERCENT) $k(RI) \times RCR = 5$									
k = 0.60	48	35	28	46	35	28	44	34	27	21
0.80	57	44	36	55	43	35	52	41	34	27
1.00	64	52	43	62	50	43	58	51	41	32
1.25	71	59	50	69	57	49	64	54	47	37
1.50	76	64	56	73	62	54	68	59	52	41
2.00	83	72	64	80	70	63	74	66	59	47
2.50	88	78	70	84	75	68	78	70	64	51
3.00	92	82	75	88	79	73	81	74	68	54
4.00	96	88	82	92	85	79	85	79	74	59
5.00	99	92	86	95	89	83	87	82	78	62
ROOM INDEX	UF(total)									Direct
According to DIN EN 13032-2 2004			Suspended				SHRNOM = 1.25			

C Range: 0 - 360DEG
 C Interval: 30.0DEG
 Test Speed: HIGH
 Temperature:25.3DEG
 Operators:
 Test Date:2024-04-15

γ Range: 0 - 180DEG
 γ Interval: 1.0DEG
 Test System:EVERFINE GO-2000B_V1 SYSTEM V2.0.362
 Humidity:65.0%
 Test Distance:7.750m [K=1.0000]
 Remarks:

ISOCANDELA DIAGRAM

Test:U:120.5V I:0.0980A P:11.60W PF:0.9750 Freq:60.00Hz Lamp Flux:1134.38x1 lm		
NAME: LVS1R-14-12-95C-MVUD-BL 整灯 4000K	TYPE:	WEIGHT:
SPEC.:	DIM.:	SERIAL No.:
MFR.: 革星	SUR.:14寸	Shielding Angle:

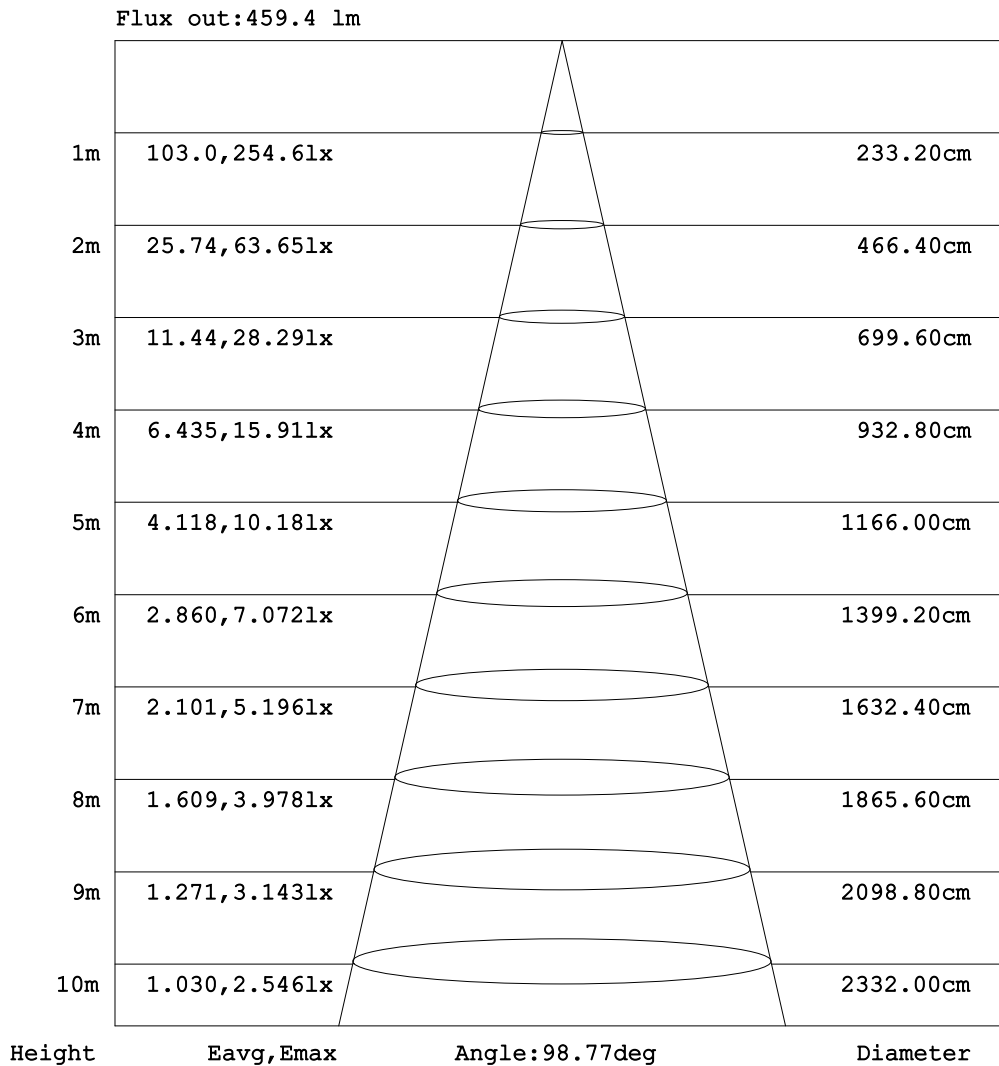


C Range: 0 - 360DEG
 C Interval: 30.0DEG
 Test Speed: HIGH
 Temperature:25.3DEG
 Operators:
 Test Date:2024-04-15

γ Range: 0 - 180DEG
 γ Interval: 1.0DEG
 Test System:EVERFINE GO-2000B_V1 SYSTEM V2.0.362
 Humidity:65.0%
 Test Distance:7.750m [K=1.0000]
 Remarks:

AAI Figure

Test:U:120.5V I:0.0980A P:11.60W PF:0.9750 Freq:60.00Hz Lamp Flux:1134.38x1 lm		
NAME: LVS1R-14-12-95C-MVUD-BL 整灯 4000K	TYPE:	WEIGHT:
SPEC.:	DIM.:	SERIAL No.:
MFR.: 革星	SUR.:14寸	Shielding Angle:

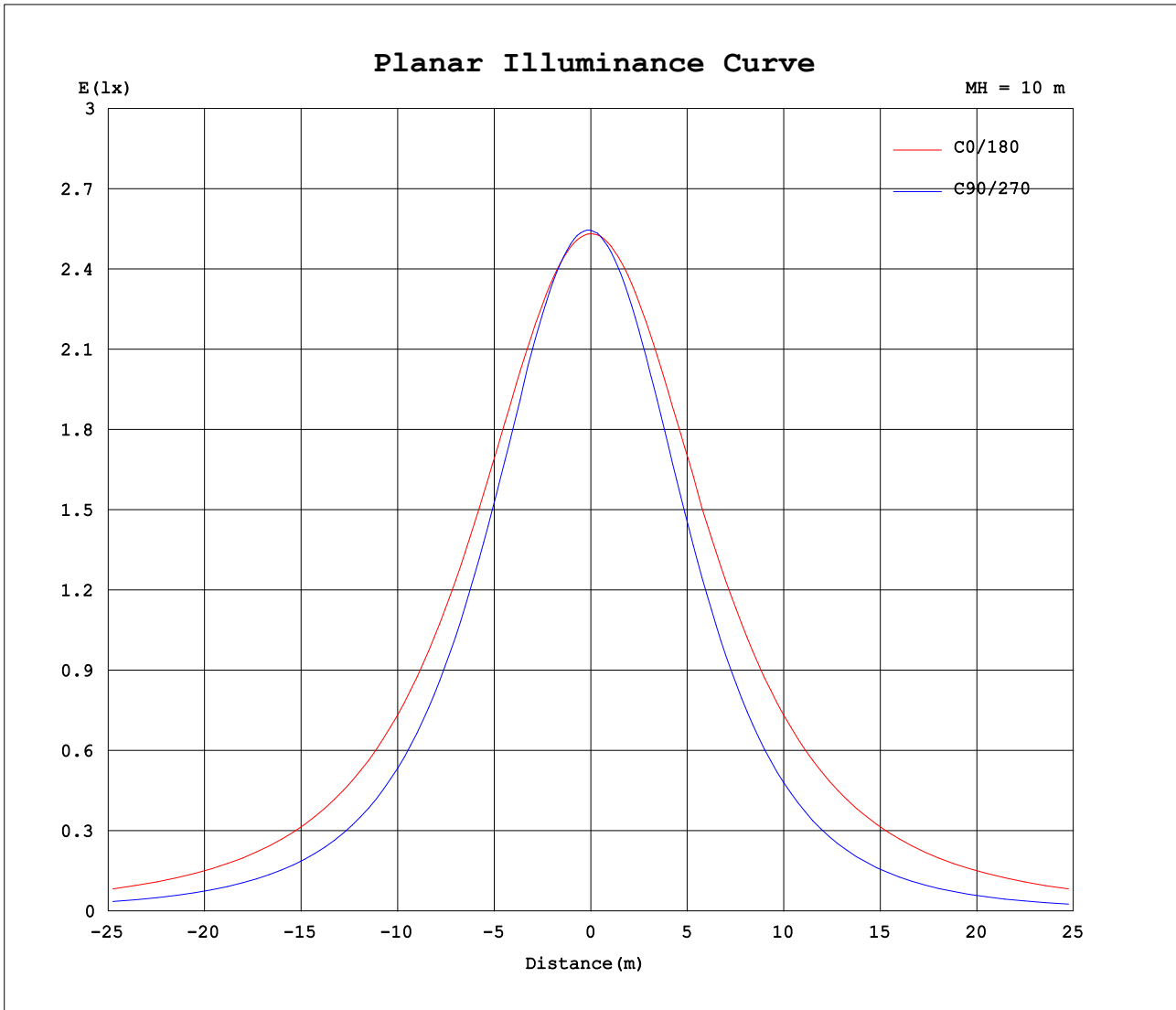


Note: The Curves indicate the illuminated area and the average illumination when the luminaire is at different distance.

C Range: 0 - 360DEG
 C Interval: 30.0DEG
 Test Speed: HIGH
 Temperature: 25.3DEG
 Operators:
 Test Date: 2024-04-15

γ Range: 0 - 180DEG
 γ Interval: 1.0DEG
 Test System: EVERFINE GO-2000B_V1 SYSTEM V2.0.362
 Humidity: 65.0%
 Test Distance: 7.750m [K=1.0000]
 Remarks:

Planar Illuminance Curve



C Range: 0 - 360DEG
 C Interval: 30.0DEG
 Test Speed: HIGH
 Temperature: 25.3DEG
 Operators:
 Test Date: 2024-04-15

γ Range: 0 - 180DEG
 γ Interval: 1.0DEG
 Test System: EVERFINE GO-2000B_V1 SYSTEM V2.0.362
 Humidity: 65.0%
 Test Distance: 7.750m [K=1.0000]
 Remarks:

LUMINOUS DISTRIBUTION INTENSITY DATA

Test:U:120.5V I:0.0980A P:11.60W PF:0.9750 Freq:60.00Hz Lamp Flux:1134.38x1 lm		
NAME: LVS1R-14-12-95C-MVUD-BL 整灯 4000K	TYPE:	WEIGHT:
SPEC.:	DIM.:	SERIAL No.:
MFR.: 革星	SUR.:14寸	Shielding Angle:

Table--1

UNIT: cd

C (DEG) \ γ (DEG)	0	30	60	90	120	150	180	210	240	270	300	330							
0	253	254	254	255	254	253	253	254	254	255	254	253							
5	253	254	254	254	253	252	253	252	252	252	252	252							
10	251	252	251	250	249	249	251	249	246	245	247	249							
15	248	249	246	243	242	245	249	243	238	236	239	244							
20	244	245	238	231	233	239	245	237	226	223	227	238							
25	238	239	228	218	221	230	240	229	214	208	215	230							
30	232	230	216	203	208	221	232	220	200	192	201	221							
35	225	221	203	187	193	211	225	210	185	174	186	211							
40	217	211	188	169	177	200	216	200	169	155	170	200							
45	208	201	173	151	161	188	207	189	153	136	154	189							
50	198	190	158	133	145	176	198	177	138	116	138	177							
55	188	178	144	115	129	164	187	166	122	97.0	122	166							
60	177	167	129	97.0	113	152	177	154	108	78.5	108	154							
65	166	155	114	79.6	98.0	140	166	143	94.3	60.7	93.8	142							
70	155	143	101	63.0	84.3	129	155	132	81.9	44.0	81.3	131							
75	144	132	89.2	47.3	71.5	118	144	121	71.1	29.0	70.4	120							
80	133	121	78.3	33.1	60.0	107	133	111	61.8	16.6	61.2	110							
85	122	111	68.7	20.7	50.3	97.5	123	102	54.2	9.00	53.7	101							
90	112	101	60.5	11.6	42.4	88.4	113	93.3	48.2	8.04	47.8	92.8							
95	103	92.5	53.6	8.11	36.4	80.0	103	85.2	43.5	8.79	43.2	84.9							
100	93.5	83.6	47.5	7.25	31.6	71.3	94.0	77.8	39.6	9.95	39.6	77.7							
105	81.8	64.3	38.9	6.44	26.0	52.2	81.0	70.9	36.5	10.9	36.9	71.0							
110	71.6	53.9	27.7	5.58	18.0	44.3	70.1	64.4	34.1	11.9	34.8	64.8							
115	65.4	50.7	23.2	5.21	14.7	40.8	63.9	58.5	32.1	12.6	33.2	59.1							
120	59.7	47.4	21.5	4.98	13.9	37.7	58.1	53.3	30.5	13.5	32.1	54.0							
125	54.3	43.7	20.9	4.93	13.5	34.8	52.6	48.3	28.1	14.3	30.8	49.4							
130	49.1	39.6	19.5	4.67	13.5	31.8	47.4	43.8	26.4	14.9	29.2	45.1							
135	44.3	35.2	15.2	4.40	13.6	29.3	42.3	39.7	25.1	15.5	27.3	41.1							
140	40.4	31.3	11.0	4.19	13.6	26.1	37.7	34.8	23.6	16.2	26.1	37.6							
145	36.6	26.7	8.04	4.05	13.6	24.1	32.3	30.5	22.3	16.8	25.0	33.9							
150	32.1	19.1	5.94	4.00	13.2	22.2	27.9	26.9	21.1	17.3	24.0	30.4							
155	28.4	11.9	4.63	4.13	12.4	20.2	24.2	23.5	19.5	17.7	23.0	27.5							
160	25.2	6.83	4.32	4.33	11.7	18.0	20.7	20.6	17.6	18.1	21.9	25.0							
165	22.2	4.79	4.60	6.73	11.6	15.3	17.2	17.7	16.9	18.2	20.6	22.6							
170	16.0	4.49	8.13	10.0	12.5	13.9	7.01	14.6	17.4	18.1	19.1	20.3							
175	4.92	4.70	12.0	13.6	14.3	14.5	4.74	14.1	17.0	17.7	17.8	18.0							
180	4.65	11.0	15.7	16.5	16.6	15.9	4.65	11.2	15.7	16.5	16.5	15.9							

C Range: 0 - 360DEG
 C Interval: 30.0DEG
 Test Speed: HIGH
 Temperature:25.3DEG
 Operators:
 Test Date:2024-04-15

γ Range: 0 - 180DEG
 γ Interval: 1.0DEG
 Test System:EVERFINE GO-2000B_V1 SYSTEM V2.0.362
 Humidity:65.0%
 Test Distance:7.750m [K=1.0000]
 Remarks: