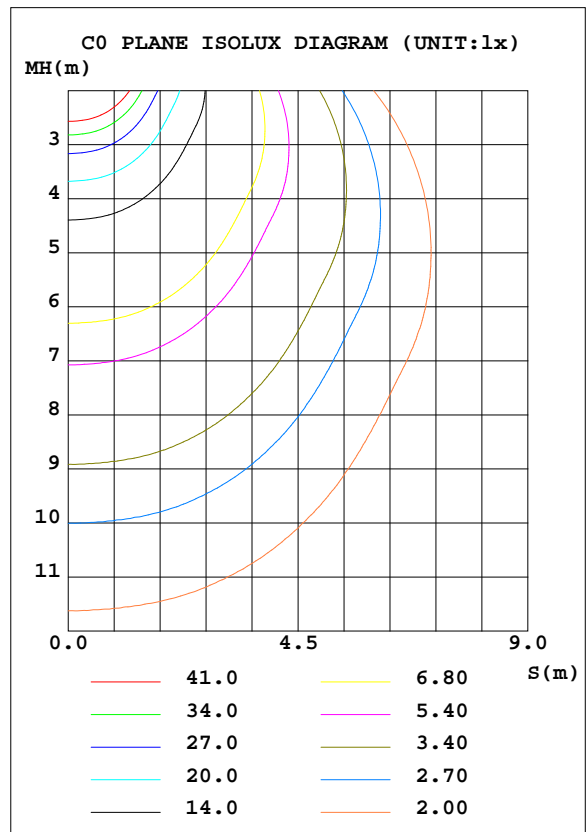
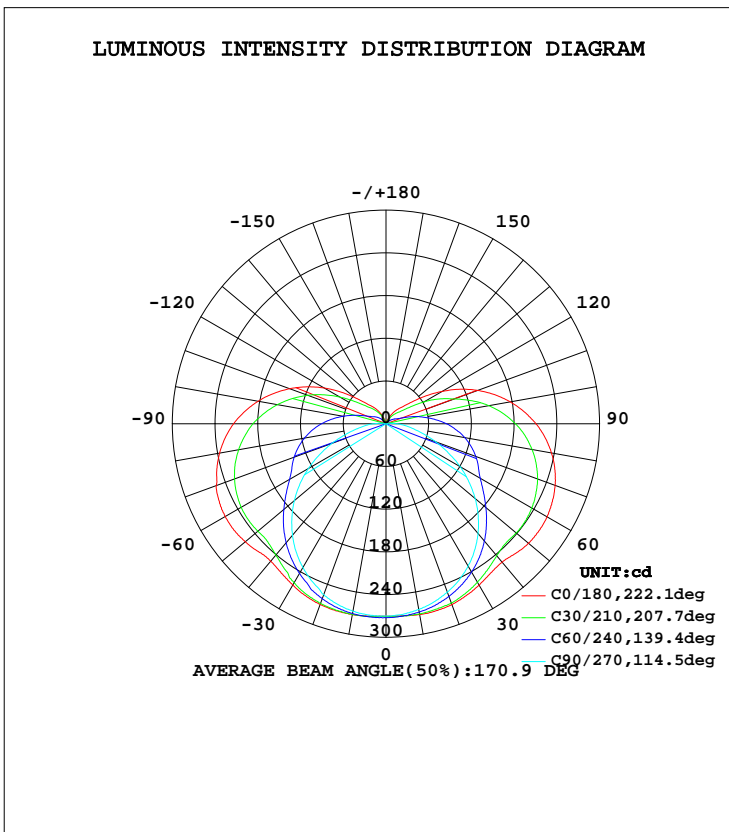


LUMINAIRE PHOTOMETRIC TEST REPORT

Test:U:120.9V I:0.5347A P:63.97W PF:0.9893 Lamp Flux:1625.18x1 lm		
NAME: NVV5494800L30D1SN	TYPE:	WEIGHT:
DIM.:	SPEC.:	SERIAL No.:20201023A0001
MFR.: AFX	SUR.:1.24*0.12	PROTECTION ANGLE:

DATA OF LAMP		PHOTOMETRIC DATA Eff: 25.40 lm/W			
MODEL	NVV5494800L30D1SN	I _{max} (cd)	272.7	S/MH(C0/180)	1.46
NOMINAL POWER(W)	64	LOR(%)	100.0	S/MH(C90/270)	1.27
RATED VOLTAGE(V)	120	TOTAL FLUX(lm)	1625.2	η UP, DN(C0-180)	10.9, 38.7
NOMINAL FLUX(lm)	1625.18	CIE CLASS	SEMI-D.	η UP, DN(C180-360)	11.1, 39.3
LAMPS INSIDE	1	η up(%)	22.0	CIBSE SHR NOM	1.50
TEST VOLTAGE(V)	120.9	η down(%)	78.0	CIBSE SHR MAX	1.55



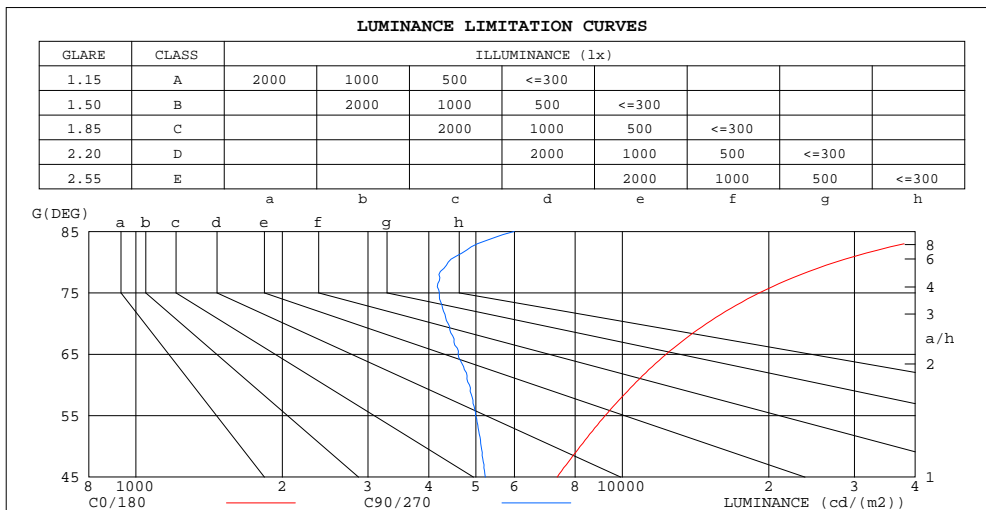
C Range: 0 - 360DEG
 C Interval: 5.0DEG
 Test Speed: HIGH
 Temperature:25DEG
 Operators:yechihong
 Test Date:2020-10-23

γ Range: 0 - 180DEG
 γ Interval: 0.5DEG
 Test System:EVERFINE GO-2000A_V1 SYSTEM V2.0.272
 Humidity:70%
 Test Distance:8.425m [K=1.0000]
 Remarks:

ZONAL FLUX DIAGRAM
AND LUMINANCE LIMITATION CURVES

ZONAL FLUX DIAGRAM:

γ	C0	C45	C90	C135	C180	C225	C270	C315	γ	Φ zone	Φ total	lum,lamp
5	270.9	271.2	268.8	268.7	271.1	271.8	269.6	268.6	0- 5	6.455	6.455	0.40,0.40
10	272.2	270.1	265.1	267.8	272.2	271.3	267.5	268.7	5- 10	19.29	25.74	1.58,1.58
15	271.8	268.0	259.4	265.9	272.0	269.5	262.5	268.5	10- 15	31.80	57.54	3.54,3.54
20	270.3	263.8	251.6	262.7	270.0	265.4	255.5	266.0	15- 20	43.67	101.2	6.23,6.23
25	266.5	258.1	242.6	257.5	266.7	259.8	244.7	261.5	20- 25	54.52	155.7	9.58,9.58
30	261.6	248.8	230.9	248.8	261.8	252.5	233.3	255.6	25- 30	64.03	219.8	13.5,13.5
35	256.0	239.5	216.8	240.6	256.2	243.6	219.9	248.1	30- 35	71.99	291.8	18,18
40	253.8	228.6	201.1	231.7	251.8	232.9	204.5	239.5	35- 40	78.39	370.1	22.8,22.8
45	257.6	217.6	183.4	224.2	253.7	221.3	186.9	232.2	40- 45	83.69	453.8	27.9,27.9
50	261.0	208.7	163.5	222.3	258.1	211.8	168.1	229.9	45- 50	88.47	542.3	33.4,33.4
55	262.2	204.6	142.0	222.7	260.6	206.9	147.6	230.0	50- 55	92.31	634.6	39,39
60	261.4	201.1	120.3	221.1	260.6	203.4	125.7	228.0	55- 60	94.85	729.5	44.9,44.9
65	258.0	195.7	96.33	217.7	258.3	198.3	103.3	223.8	60- 65	95.92	825.4	50.8,50.8
70	252.6	188.3	74.38	212.2	253.5	191.9	80.63	218.3	65- 70	95.41	920.8	56.7,56.7
75	245.4	179.5	53.99	204.9	245.9	183.2	59.40	210.2	70- 75	93.36	1014	62.4,62.4
80	236.1	169.2	37.78	196.1	237.2	172.9	41.29	200.4	75- 80	89.86	1104	67.9,67.9
85	224.4	157.3	25.91	185.3	226.6	161.5	28.78	188.4	80- 85	84.98	1189	73.2,73.2
90	210.5	143.2	15.16	172.4	214.1	148.5	17.53	175.2	85- 90	78.87	1268	78,78
95	194.8	126.5	7.810	157.2	199.1	133.1	8.925	158.9	90- 95	71.52	1339	82.4,82.4
100	177.4	105.9	4.932	141.0	182.4	116.8	4.617	140.6	95-100	63.16	1403	86.3,86.3
105	158.1	89.84	3.575	123.1	163.9	98.67	3.408	115.3	100-105	54.17	1457	89.6,89.6
110	137.1	69.89	2.178	104.0	144.2	80.51	1.870	97.34	105-110	45.01	1502	92.4,92.4
115	115.0	49.44	1.025	84.05	122.9	62.56	0.9142	75.69	110-115	35.88	1538	94.6,94.6
120	91.03	32.49	1.037	64.72	100.7	46.44	0.9100	53.35	115-120	27.32	1565	96.3,96.3
125	68.25	22.41	1.127	47.90	78.21	35.32	0.9690	36.55	120-125	19.80	1585	97.5,97.5
130	48.23	18.27	1.290	36.42	57.45	28.69	1.041	25.19	125-130	13.76	1598	98.4,98.4
135	34.69	14.24	1.334	30.22	42.27	23.37	1.114	19.47	130-135	9.448	1608	98.9,98.9
140	27.73	10.33	1.503	24.24	33.10	17.96	1.322	14.95	135-140	6.649	1615	99.3,99.3
145	21.18	6.743	1.593	18.19	26.44	12.53	1.512	10.66	140-145	4.634	1619	99.6,99.6
150	14.38	3.444	1.661	12.10	19.64	7.298	1.476	6.493	145-150	2.946	1622	99.8,99.8
155	7.877	1.512	1.842	6.173	12.79	2.621	1.657	2.821	150-155	1.631	1624	99.9,99.9
160	2.005	1.580	1.901	1.692	6.032	1.498	1.753	1.476	155-160	0.7273	1625	100,100
165	1.593	1.711	1.892	1.666	1.539	1.521	1.829	1.574	160-165	0.3053	1625	100,100
170	1.634	1.620	1.842	1.734	1.598	1.585	1.861	1.612	165-170	0.2029	1625	100,100
175	1.756	1.661	1.851	1.679	1.657	1.625	1.842	1.630	170-175	0.1211	1625	100,100
180	1.725	1.643	1.838	1.666	1.729	1.652	1.833	1.657	175-180	0.0407	1625	100,100
DEG	LUMINOUS INTENSITY:cd MAX[(Ii - Iavg)/Iavg](0-135) = 99.6 %										UNIT:lm	



LUMINANCE cd/(m2)		
G(DEG)	C0/180	C90/270
85	51900	5994
80	27413	4386
75	19114	4206
70	14889	4384
65	12306	4595
60	10542	4849
55	9217	4992
50	8186	5127
45	7346	5230

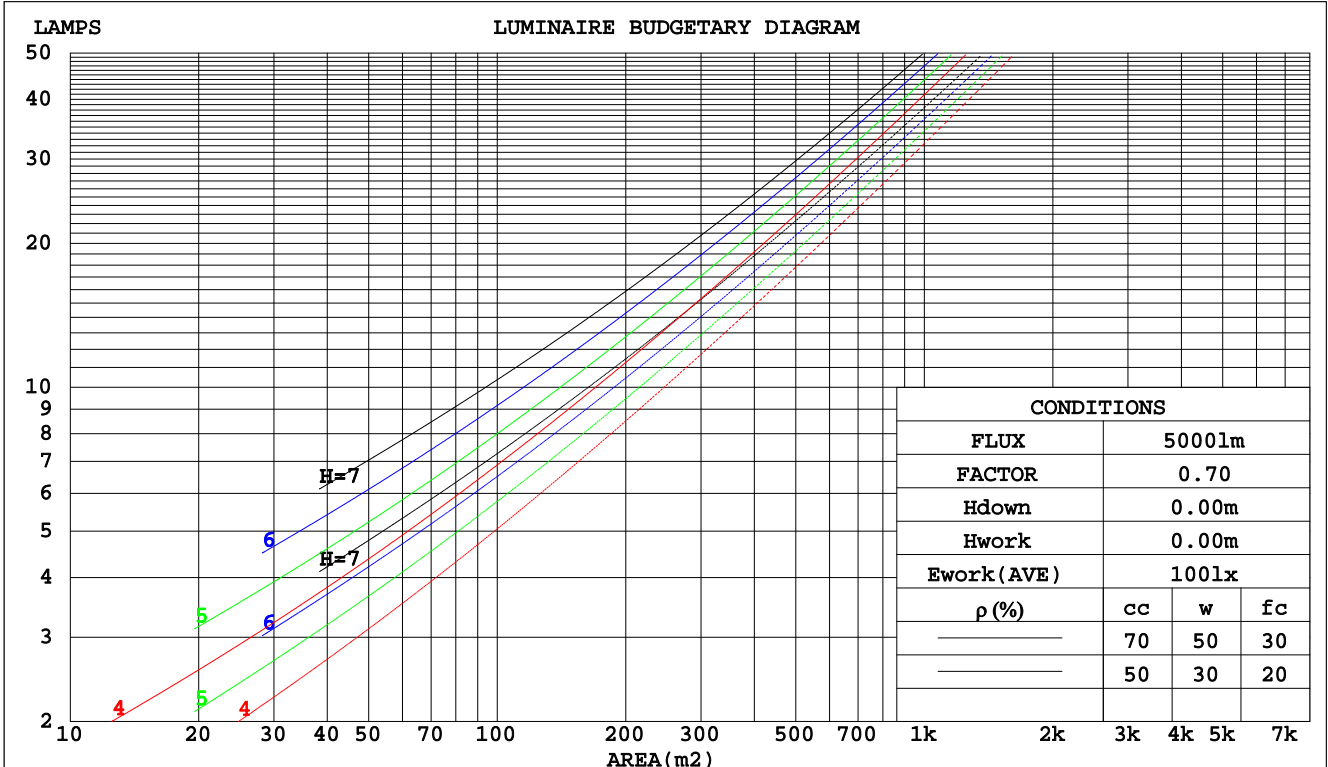
C Range: 0 - 360DEG
C Interval: 5.0DEG
Test Speed: HIGH
Temperature:25DEG
Operators:yechihong
Test Date:2020-10-23

γ Range: 0 - 180DEG
γ Interval: 0.5DEG
Test System:EVERFINE GO-2000A_V1 SYSTEM V2.0.272
Humidity:70%
Test Distance:8.425m [K=1.0000]
Remarks:

CU AND LUMINAIRE BUDGETARY ESTIMATE DIAGRAM

Test:U:120.9V I:0.5347A P:63.97W PF:0.9893 Lamp Flux:1625.18x1 lm		
NAME: NVV5494800L30D1SN	TYPE:	WEIGHT:
DIM.:	SPEC.:	SERIAL No.:20201023A0001
MFR.: AFX	SUR.:1.24*0.12	PROTECTION ANGLE:

pcc	80%			70%			50%			30%			10%			0
	50%	30%	10%	50%	30%	10%	50%	30%	10%	50%	30%	10%	50%	30%	10%	0
pw																
pfc	20%			20%			20%			20%			20%			0
RCR	RCR:Room Cavity Ratio															
	Coefficients of Utilization(CU)															
0.0	1.14	1.14	1.14	1.09	1.09	1.09	.99	.99	.99	.90	.90	.90	.82	.82	.82	.78
1.0	.93	.87	.81	.88	.83	.78	.80	.75	.71	.72	.68	.65	.65	.62	.60	.56
2.0	.78	.70	.63	.74	.67	.60	.67	.61	.56	.61	.55	.51	.54	.50	.47	.43
3.0	.67	.58	.50	.64	.55	.48	.58	.51	.45	.52	.46	.41	.47	.42	.38	.34
4.0	.59	.49	.42	.56	.47	.40	.51	.43	.37	.46	.39	.34	.41	.36	.31	.28
5.0	.52	.42	.35	.50	.41	.34	.45	.37	.31	.41	.34	.29	.36	.31	.27	.24
6.0	.46	.37	.30	.44	.35	.29	.40	.33	.27	.36	.30	.25	.33	.27	.23	.20
7.0	.42	.33	.26	.40	.31	.25	.36	.29	.23	.33	.27	.22	.30	.24	.20	.18
8.0	.38	.29	.23	.36	.28	.22	.33	.26	.21	.30	.24	.19	.27	.22	.18	.16
9.0	.35	.26	.20	.33	.25	.20	.30	.23	.18	.28	.22	.17	.25	.20	.16	.14
10.0	.32	.24	.18	.30	.23	.18	.28	.21	.17	.26	.20	.15	.23	.18	.14	.12



C Range: 0 - 360DEG
 C Interval: 5.0DEG
 Test Speed: HIGH
 Temperature:25DEG
 Operators:yechihong
 Test Date:2020-10-23

γ Range: 0 - 180DEG
 γ Interval: 0.5DEG
 Test System:EVERFINE GO-2000A_V1 SYSTEM V2.0.272
 Humidity:70%
 Test Distance:8.425m [K=1.0000]
 Remarks:

WEC AND CCEC

Test:U:120.9V I:0.5347A P:63.97W PF:0.9893 Lamp Flux:1625.18x1 lm		
NAME: NVV5494800L30D1SN	TYPE:	WEIGHT:
DIM.:	SPEC.:	SERIAL No.:20201023A0001
MFR.: AFX	SUR.:1.24*0.12	PROTECTION ANGLE:

ρcc	80%			70%			50%			30%			10%			0
ρw	50%	30%	10%	50%	30%	10%	50%	30%	10%	50%	30%	10%	50%	30%	10%	0
ρfc	20%			20%			20%			20%			20%			0
RCR	RCR:Room Cavity Ratio						Wall Exitance Coefficients(WEC)									
0.0																
1.0	.424	.241	.076	.410	.234	.074	.384	.220	.070	.360	.208	.067	.338	.196	.063	
2.0	.357	.196	.060	.344	.190	.058	.320	.178	.055	.298	.167	.052	.278	.157	.050	
3.0	.312	.166	.050	.301	.161	.048	.279	.151	.046	.259	.142	.044	.240	.133	.041	
4.0	.278	.144	.042	.267	.140	.041	.248	.131	.039	.230	.123	.037	.213	.116	.035	
5.0	.251	.128	.037	.241	.124	.036	.223	.116	.034	.207	.109	.032	.191	.102	.031	
6.0	.228	.114	.033	.220	.111	.032	.203	.104	.030	.188	.098	.029	.174	.092	.027	
7.0	.210	.104	.029	.202	.101	.029	.187	.094	.027	.173	.089	.026	.160	.083	.024	
8.0	.194	.095	.027	.187	.092	.026	.173	.086	.025	.160	.081	.023	.148	.076	.022	
9.0	.180	.087	.024	.173	.084	.024	.161	.079	.023	.149	.075	.021	.137	.070	.020	
10.0	.168	.081	.022	.162	.078	.022	.150	.074	.021	.139	.069	.020	.129	.065	.019	

ρcc	80%			70%			50%			30%			10%			0
ρw	50%	30%	10%	50%	30%	10%	50%	30%	10%	50%	30%	10%	50%	30%	10%	0
ρfc	20%			20%			20%			20%			20%			0
RCR	RCR:Room Cavity Ratio						Ceiling Cavity Exitance Coefficients(CCEC)									
0.0	.358	.358	.358	.306	.306	.306	.209	.209	.209	.120	.120	.120	.038	.038	.038	
1.0	.357	.324	.294	.306	.278	.253	.209	.191	.175	.120	.111	.102	.039	.036	.033	
2.0	.351	.302	.260	.301	.260	.225	.206	.180	.157	.119	.104	.092	.038	.034	.030	
3.0	.344	.286	.239	.295	.246	.207	.202	.171	.146	.117	.100	.086	.038	.032	.028	
4.0	.336	.273	.226	.288	.236	.196	.198	.165	.138	.115	.096	.082	.037	.031	.027	
5.0	.328	.264	.216	.281	.228	.188	.194	.159	.133	.112	.094	.079	.036	.031	.026	
6.0	.320	.256	.210	.275	.222	.183	.190	.155	.129	.110	.091	.077	.036	.030	.025	
7.0	.313	.249	.205	.269	.216	.179	.186	.152	.127	.108	.089	.075	.035	.029	.025	
8.0	.306	.244	.201	.263	.212	.175	.182	.149	.124	.106	.088	.074	.034	.029	.025	
9.0	.299	.239	.198	.258	.208	.173	.179	.146	.123	.104	.086	.073	.034	.028	.024	
10.0	.293	.235	.196	.253	.204	.171	.175	.144	.122	.102	.085	.073	.033	.028	.024	

C Range: 0 - 360DEG
 C Interval: 5.0DEG
 Test Speed: HIGH
 Temperature:25DEG
 Operators:yechihong
 Test Date:2020-10-23

γ Range: 0 - 180DEG
 γ Interval: 0.5DEG
 Test System:EVERFINE GO-2000A_V1 SYSTEM V2.0.272
 Humidity:70%
 Test Distance:8.425m [K=1.0000]
 Remarks:

Uncorrected UGR Table

Test:U:120.9V I:0.5347A P:63.97W PF:0.9893 Lamp Flux:1625.18x1 lm										
NAME: NVV5494800L30D1SN					TYPE:			WEIGHT:		
DIM.:					SPEC.:			SERIAL No.:20201023A0001		
MFR.: AFX					SUR.:1.24*0.12			PROTECTION ANGLE:		
ceiling/cavity	0.7	0.7	0.5	0.5	0.3	0.7	0.7	0.5	0.5	0.3
walls	0.5	0.3	0.5	0.3	0.3	0.5	0.3	0.5	0.3	0.3
working plane	0.2	0.2	0.2	0.2	0.2	0.2	0.2	0.2	0.2	0.2
Room dimensions	Viewed crosswise					Viewed endwise				
x = 2H y = 2H	19.8	21.2	20.4	21.8	22.4	16.0	17.4	16.5	17.9	18.6
3H	23.0	24.3	23.6	24.9	25.6	17.2	18.4	17.8	19.0	19.7
4H	24.8	26.0	25.4	26.6	27.3	17.6	18.8	18.2	19.4	20.1
6H	26.7	27.9	27.3	28.5	29.2	17.8	19.0	18.4	19.6	20.3
8H	27.8	28.9	28.4	29.5	30.3	17.9	19.0	18.5	19.7	20.4
12H	28.9	30.0	29.6	30.7	31.4	18.0	19.1	18.7	19.7	20.5
4H 2H	20.4	21.6	21.0	22.3	23.0	17.9	19.1	18.5	19.7	20.4
3H	23.9	25.0	24.5	25.6	26.4	19.5	20.6	20.2	21.2	22.0
4H	25.9	26.8	26.5	27.5	28.3	20.1	21.1	20.8	21.8	22.6
6H	28.0	28.9	28.7	29.6	30.4	20.4	21.3	21.1	22.0	22.9
8H	29.2	30.0	29.9	30.7	31.6	20.5	21.3	21.2	22.0	22.9
12H	30.5	31.3	31.2	32.0	32.9	20.5	21.3	21.2	22.0	22.9
8H 4H	26.2	27.1	26.9	27.8	28.6	22.2	23.0	22.9	23.7	24.6
6H	28.7	29.4	29.4	30.2	31.0	23.2	23.9	23.9	24.6	25.5
8H	30.1	30.7	30.9	31.5	32.4	23.5	24.1	24.2	24.9	25.8
12H	31.7	32.3	32.5	33.0	34.0	23.6	24.2	24.4	25.0	25.9
12H 4H	26.2	27.0	27.0	27.7	28.6	22.8	23.6	23.5	24.3	25.2
6H	28.8	29.5	29.6	30.2	31.1	24.2	24.8	25.0	25.6	26.5
8H	30.4	30.9	31.1	31.7	32.6	24.8	25.4	25.6	26.2	27.1
Variations with the observer position at spacings:										
S = 1.0H	+ 0.1 / - 0.1					+ 0.1 / - 0.1				
1.5H	+ 0.2 / - 0.3					+ 0.1 / - 0.1				
2.0H	+ 0.3 / - 0.4					+ 0.2 / - 0.2				

CIE Pub.117 Corrected 1625 lm Total Lamp Luminous Flux.(8log(F/F0) = 1.7)

C Range: 0 - 360DEG
 C Interval: 5.0DEG
 Test Speed: HIGH
 Temperature:25DEG
 Operators:yechihong
 Test Date:2020-10-23

γ Range: 0 - 180DEG
 γ Interval: 0.5DEG
 Test System:EVERFINE GO-2000A_V1 SYSTEM V2.0.272
 Humidity:70%
 Test Distance:8.425m [K=1.0000]
 Remarks:

UTILIZATION FACTORS TABLE

Test:U:120.9V I:0.5347A P:63.97W PF:0.9893 Lamp Flux:1625.18x1 lm		
NAME: NVV5494800L30D1SN	TYPE:	WEIGHT:
DIM.:	SPEC.:	SERIAL No.:20201023A0001
MFR.: AFX	SUR.:1.24*0.12	PROTECTION ANGLE:

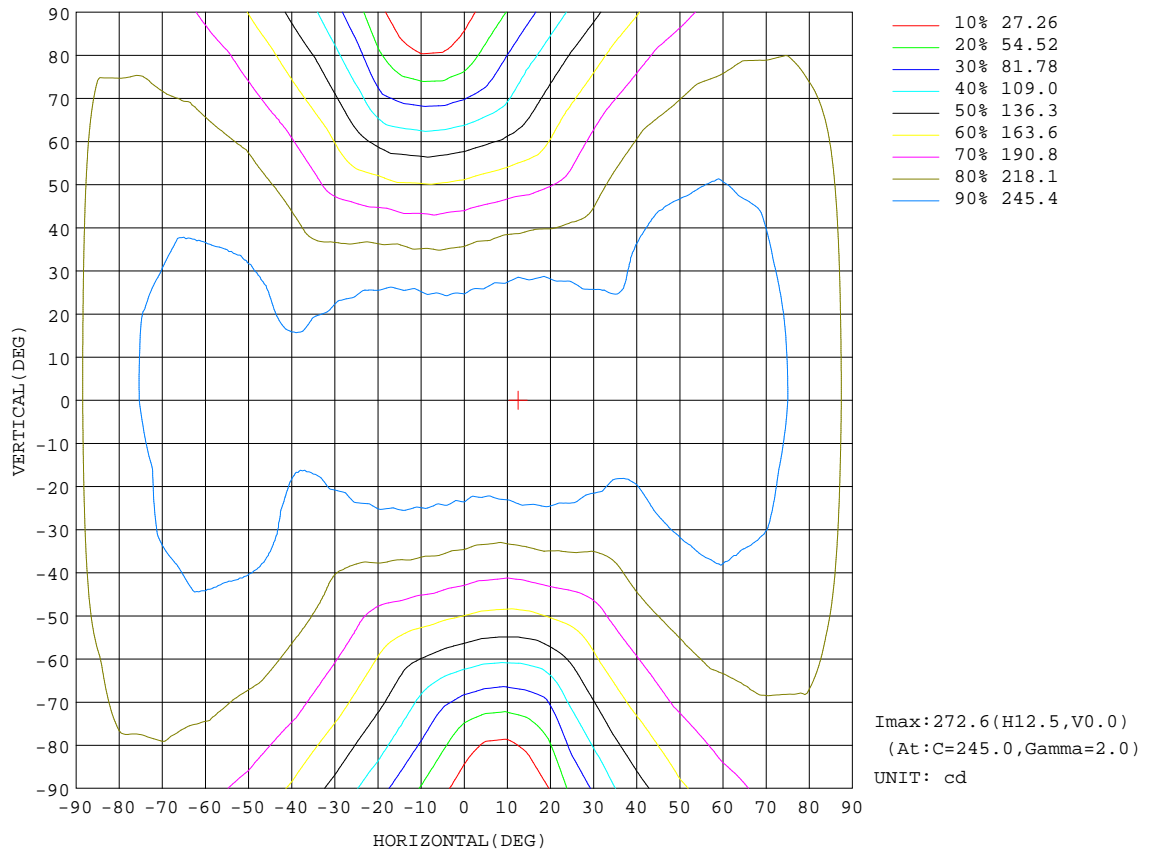
REFLECTANCE										
Ceiling	0.8	0.8	0.8	0.7	0.7	0.7	0.5	0.5	0.5	0
Walls	0.7	0.5	0.3	0.7	0.5	0.3	0.7	0.5	0.3	0
Working plane	0.2	0.2	0.2	0.2	0.2	0.2	0.2	0.2	0.2	0
ROOM INDEX	UTILIZATION FACTORS(PERCENT) $k(RI) \times RCR = 5$									
k = 0.60	44	31	24	43	31	24	41	30	23	16
0.80	53	39	31	51	39	30	48	37	30	22
1.00	60	47	38	58	46	37	55	46	36	27
1.25	67	54	44	65	52	44	60	50	42	32
1.50	72	59	50	70	57	49	64	54	47	35
2.00	80	68	58	77	65	57	70	61	54	42
2.50	85	73	64	81	71	63	74	66	59	45
3.00	89	78	70	85	75	68	77	70	63	49
4.00	94	85	77	89	81	75	82	75	70	54
5.00	97	89	82	92	85	79	84	79	74	57
ROOM INDEX	UF(total)									Direct
According to DIN EN 13032-2 2004			Suspended				SHRNOM = 1.25			

C Range: 0 - 360DEG
 C Interval: 5.0DEG
 Test Speed: HIGH
 Temperature:25DEG
 Operators:yechihong
 Test Date:2020-10-23

γ Range: 0 - 180DEG
 γ Interval: 0.5DEG
 Test System:EVERFINE GO-2000A_V1 SYSTEM V2.0.272
 Humidity:70%
 Test Distance:8.425m [K=1.0000]
 Remarks:

ISOCANDELA DIAGRAM

Test:U:120.9V I:0.5347A P:63.97W PF:0.9893 Lamp Flux:1625.18x1 lm		
NAME: NVV5494800L30D1SN	TYPE:	WEIGHT:
DIM.:	SPEC.:	SERIAL No.:20201023A0001
MFR.: AFX	SUR.:1.24*0.12	PROTECTION ANGLE:

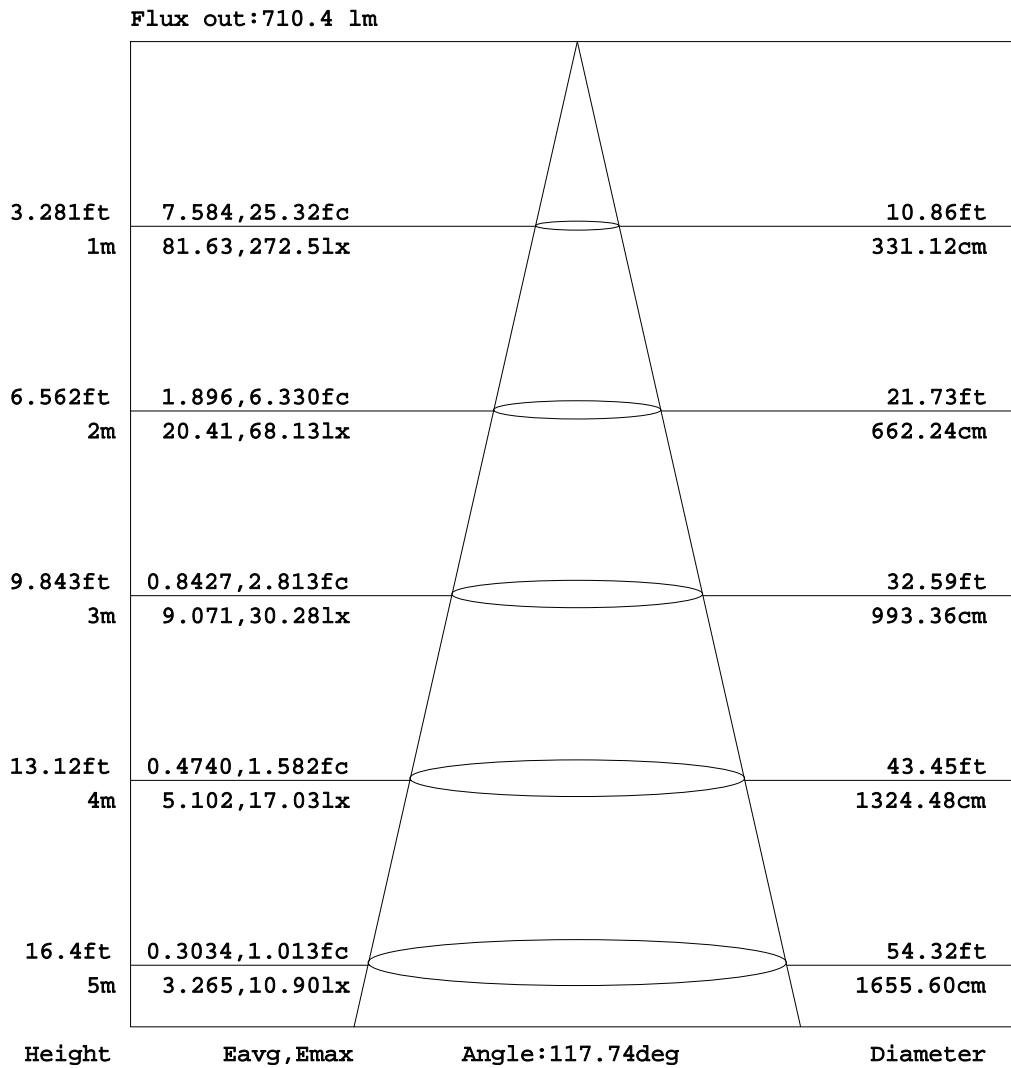


C Range: 0 - 360DEG
 C Interval: 5.0DEG
 Test Speed: HIGH
 Temperature: 25DEG
 Operators: yechihong
 Test Date: 2020-10-23

γ Range: 0 - 180DEG
 γ Interval: 0.5DEG
 Test System: EVERFINE GO-2000A_V1 SYSTEM V2.0.272
 Humidity: 70%
 Test Distance: 8.425m [K=1.0000]
 Remarks:

AAI Figure

Test:U:120.9V I:0.5347A P:63.97W PF:0.9893 Lamp Flux:1625.18x1 lm		
NAME: NVV5494800L30D1SN	TYPE:	WEIGHT:
DIM.:	SPEC.:	SERIAL No.:20201023A0001
MFR.: AFX	SUR.:1.24*0.12	PROTECTION ANGLE:



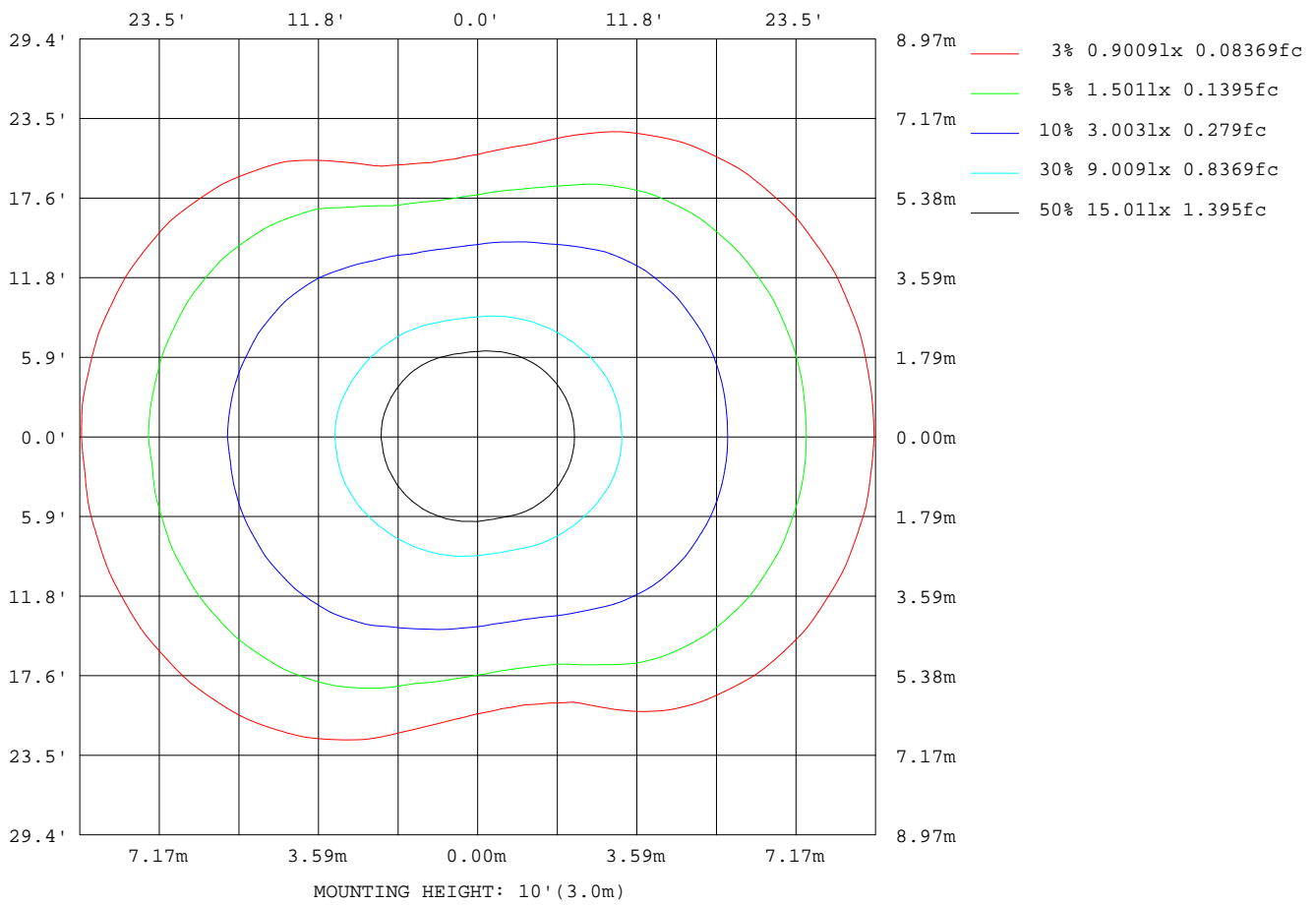
Note:The Curves indicate the illuminated area and the average illumination when the luminaire is at different distance.

C Range: 0 - 360DEG
 C Interval: 5.0DEG
 Test Speed: HIGH
 Temperature:25DEG
 Operators:yechihong
 Test Date:2020-10-23

γ Range: 0 - 180DEG
 γ Interval: 0.5DEG
 Test System:EVERFINE GO-2000A_V1 SYSTEM V2.0.272
 Humidity:70%
 Test Distance:8.425m [K=1.0000]
 Remarks:

ISOLUX DIAGRAM

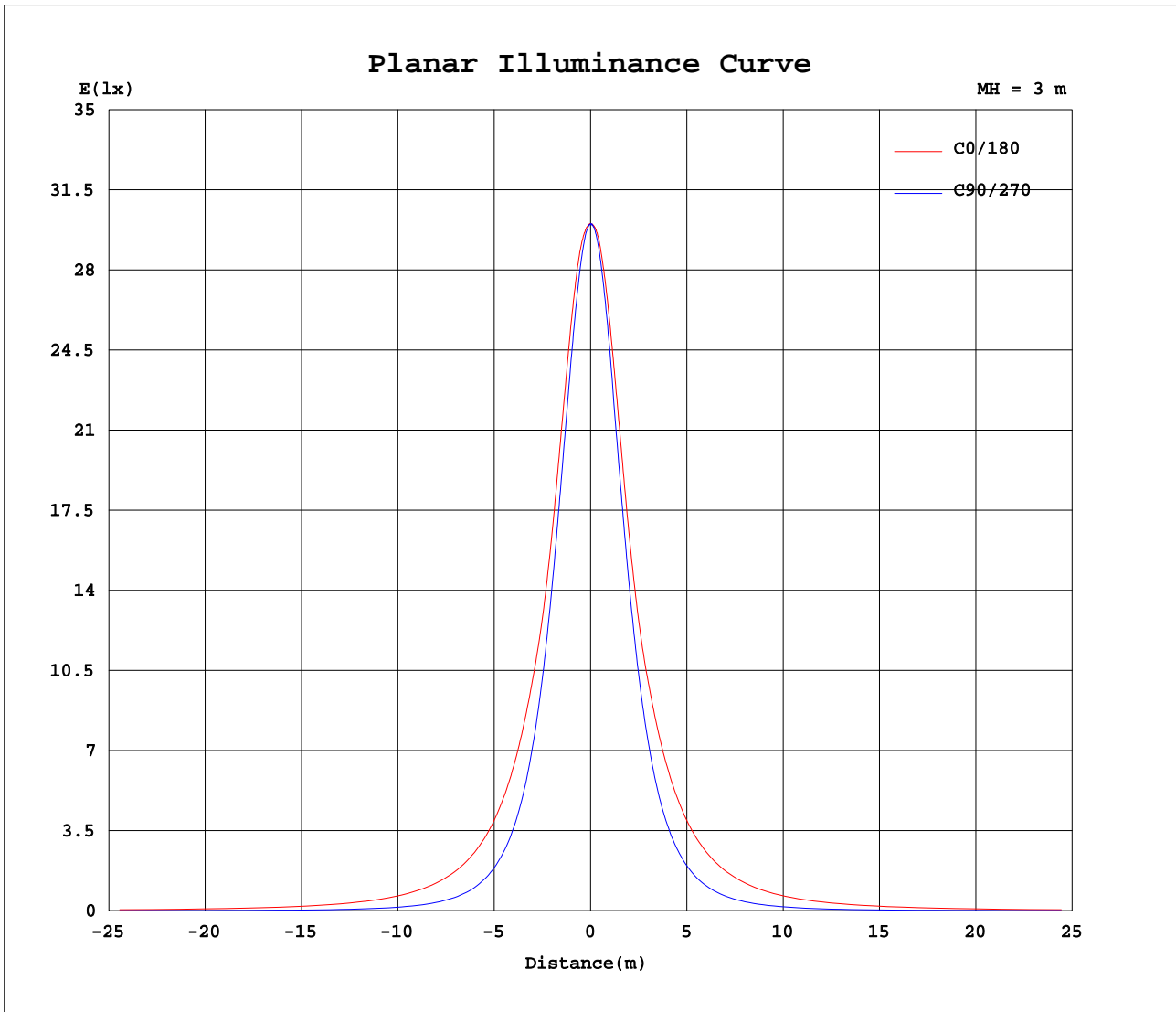
Test:U:120.9V I:0.5347A P:63.97W PF:0.9893 Lamp Flux:1625.18x1 lm		
NAME: NVV5494800L30D1SN	TYPE:	WEIGHT:
DIM.:	SPEC.:	SERIAL No.:20201023A0001
MFR.: AFX	SUR.:1.24*0.12	PROTECTION ANGLE:



C Range: 0 - 360DEG
C Interval: 5.0DEG
Test Speed: HIGH
Temperature:25DEG
Operators:yechihong
Test Date:2020-10-23

γ Range: 0 - 180DEG
γ Interval: 0.5DEG
Test System:EVERFINE GO-2000A_V1 SYSTEM V2.0.272
Humidity:70%
Test Distance:8.425m [K=1.0000]
Remarks:

Planar Illuminance Curve



C Range: 0 - 360DEG
 C Interval: 5.0DEG
 Test Speed: HIGH
 Temperature: 25DEG
 Operators: yechihong
 Test Date: 2020-10-23

γ Range: 0 - 180DEG
 γ Interval: 0.5DEG
 Test System: EVERFINE GO-2000A_V1 SYSTEM V2.0.272
 Humidity: 70%
 Test Distance: 8.425m [K=1.0000]
 Remarks:

LUMINOUS DISTRIBUTION INTENSITY DATA

Test:U:120.9V I:0.5347A P:63.97W PF:0.9893 Lamp Flux:1625.18x1 lm		
NAME: NVV5494800L30D1SN	TYPE:	WEIGHT:
DIM.:	SPEC.:	SERIAL No.:20201023A0001
MFR.: AFX	SUR.:1.24*0.12	PROTECTION ANGLE:

Table--1

UNIT: cd

C(DEG) γ (DEG)	0	5	10	15	20	25	30	35	40	45	50	55	60	65	70	75	80	85	90
0	270	270	271	271	271	271	271	271	271	272	271	272	272	272	272	272	271	270	270
5	271	271	271	271	272	271	271	271	271	271	271	271	271	271	270	270	269	269	269
10	272	272	272	272	271	271	271	271	271	270	270	269	269	268	266	266	266	265	265
15	272	272	272	272	271	271	270	270	268	268	267	266	265	263	261	260	260	260	259
20	270	270	270	270	269	268	268	267	265	264	262	261	258	256	253	251	251	250	252
25	267	267	267	266	265	264	263	262	260	258	256	252	250	246	244	241	241	240	243
30	262	262	261	260	259	258	257	255	253	249	247	243	240	235	232	229	229	228	231
35	256	257	255	255	253	250	249	246	244	239	237	232	229	223	219	215	215	214	217
40	254	253	252	251	248	244	242	237	234	229	225	219	215	208	203	199	198	198	201
45	258	257	255	252	248	242	238	230	226	218	213	205	199	192	185	181	180	180	183
50	261	261	259	255	251	244	239	229	220	209	200	191	183	175	166	161	160	159	163
55	262	262	260	257	251	244	239	229	219	205	192	179	167	157	146	140	137	138	142
60	261	261	259	255	250	242	237	226	216	201	187	171	153	139	125	118	115	115	120
65	258	258	255	250	247	238	232	221	211	196	181	164	143	123	103	94.8	90.1	91.3	96.3
70	253	250	250	245	241	233	227	215	204	188	174	156	134	111	82.3	72.0	65.8	67.5	74.4
75	245	243	242	237	233	225	218	207	195	180	164	146	124	101	65.7	50.8	43.2	44.4	54.0
80	236	233	233	228	223	215	208	197	185	169	154	135	112	88.8	53.0	33.4	22.2	23.9	37.8
85	224	222	221	216	212	204	196	185	173	157	141	123	99.0	76.1	40.6	21.5	7.47	9.65	25.9
90	211	208	207	202	197	189	182	171	159	143	127	109	85.0	62.9	28.5	11.6	1.52	2.86	15.2
95	195	192	191	186	181	173	165	154	143	126	110	92.2	69.5	48.8	17.8	5.17	0.82	1.34	7.81
100	177	175	173	168	163	155	147	135	122	106	90.5	75.1	53.4	34.7	10.3	3.31	0.74	0.86	4.93
105	158	156	154	149	143	135	125	113	102	89.8	74.2	59.0	39.3	22.1	7.38	2.06	0.73	0.81	3.57
110	137	135	133	128	122	112	102	94.1	83.5	69.9	54.7	41.2	24.3	14.6	5.17	0.96	0.77	0.82	2.18
115	115	113	111	106	99.2	89.6	82.7	73.6	60.9	49.4	36.8	26.1	16.6	11.4	3.33	0.93	0.87	0.87	1.02
120	91.0	90.0	87.1	83.2	76.0	69.5	61.4	51.3	41.9	32.5	24.1	18.6	13.5	8.69	1.77	1.00	0.96	0.96	1.04
125	68.3	67.3	64.5	61.9	54.6	49.4	40.7	34.5	28.0	22.4	18.7	15.2	10.4	6.26	1.12	1.07	1.05	1.05	1.13
130	48.2	47.3	45.7	43.3	37.5	32.6	28.2	24.2	20.8	18.3	15.0	11.8	7.66	4.07	1.17	1.16	1.14	1.15	1.29
135	34.7	34.2	33.1	30.7	27.0	24.4	21.8	19.3	16.8	14.2	11.4	8.61	5.07	2.11	1.24	1.31	1.23	1.25	1.33
140	27.7	27.7	26.9	24.0	20.7	18.8	16.8	14.7	12.5	10.3	7.93	5.63	2.73	1.46	1.50	1.50	1.49	1.49	1.50
145	21.2	21.2	20.5	17.3	15.1	13.7	11.9	10.3	8.50	6.74	4.77	2.95	1.44	1.47	1.56	1.60	1.59	1.59	1.59
150	14.4	14.6	13.0	11.3	9.85	8.68	7.38	6.17	4.78	3.44	2.08	1.47	1.46	1.46	1.58	1.64	1.66	1.66	1.66
155	7.88	7.92	6.46	5.74	4.90	4.18	3.34	2.56	1.79	1.51	1.51	1.51	1.63	1.65	1.78	1.73	1.81	1.82	1.84
160	2.00	2.01	1.75	1.68	1.57	1.53	1.54	1.54	1.54	1.58	1.60	1.63	1.65	1.66	1.87	1.73	1.77	1.87	1.90
165	1.59	1.59	1.56	1.56	1.57	1.56	1.56	1.58	1.60	1.71	1.86	1.90	1.90	1.72	1.67	1.67	1.69	1.78	1.89
170	1.63	1.61	1.58	1.58	1.59	1.59	1.61	1.60	1.61	1.62	1.63	1.63	1.64	1.64	1.65	1.65	1.66	1.71	1.84
175	1.76	1.74	1.68	1.65	1.64	1.64	1.64	1.65	1.66	1.66	1.67	1.67	1.67	1.67	1.67	1.67	1.68	1.70	1.85
180	1.72	1.70	1.66	1.64	1.63	1.63	1.63	1.64	1.65	1.64	1.66	1.66	1.66	1.66	1.67	1.66	1.66	1.70	1.84

C Range: 0 - 360DEG
 C Interval: 5.0DEG
 Test Speed: HIGH
 Temperature:25DEG
 Operators:yechihong
 Test Date:2020-10-23

γ Range: 0 - 180DEG
 γ Interval: 0.5DEG
 Test System:EVERFINE GO-2000A_V1 SYSTEM V2.0.272
 Humidity:70%
 Test Distance:8.425m [K=1.0000]
 Remarks:

LUMINOUS DISTRIBUTION INTENSITY DATA

Test:U:120.9V I:0.5347A P:63.97W PF:0.9893 Lamp Flux:1625.18x1 lm		
NAME: NVV5494800L30D1SN	TYPE:	WEIGHT:
DIM.:	SPEC.:	SERIAL No.:20201023A0001
MFR.: AFX	SUR.:1.24*0.12	PROTECTION ANGLE:

Table--2

UNIT: cd

C(DEG) γ (DEG)	95	100	105	110	115	120	125	130	135	140	145	150	155	160	165	170	175	180	185
0	270	269	269	268	268	269	268	268	269	268	268	268	268	268	268	269	269	270	270
5	268	268	267	267	267	268	268	269	269	269	269	269	269	269	269	269	269	271	271
10	265	265	265	265	265	266	267	268	268	268	269	268	269	269	269	269	270	272	272
15	260	260	260	261	262	263	265	265	266	267	267	268	268	269	269	269	270	272	272
20	252	254	254	256	257	258	260	261	263	263	264	266	266	266	267	268	268	270	270
25	242	245	245	248	249	252	254	256	257	258	260	261	262	263	263	264	264	267	267
30	231	234	235	238	240	243	245	248	249	252	253	255	256	257	258	259	259	262	262
35	218	222	224	228	229	234	235	239	241	244	245	248	248	251	252	253	253	256	256
40	203	208	210	215	217	223	225	230	232	236	238	242	243	245	247	248	249	252	251
45	186	192	195	201	205	211	214	221	224	231	234	240	243	247	250	251	251	254	253
50	167	173	178	186	191	199	206	215	222	232	237	244	247	252	254	255	255	258	258
55	147	154	161	170	179	192	202	215	223	232	238	245	248	253	256	257	257	261	260
60	126	135	144	158	172	188	200	213	221	231	237	245	248	253	256	257	257	261	260
65	105	117	131	149	165	181	195	209	218	228	234	242	245	251	252	255	255	258	258
70	86.0	102	121	140	157	174	188	202	212	223	229	237	241	246	247	250	249	254	253
75	70.4	91.2	110	130	147	165	180	195	205	216	222	231	234	240	241	244	242	246	246
80	58.1	78.7	98.6	119	136	154	169	185	196	207	214	222	226	231	233	235	234	237	238
85	45.4	66.2	86.0	106	124	142	158	174	185	196	203	212	216	221	222	225	223	227	227
90	32.8	52.7	72.1	91.8	110	129	144	160	172	184	191	199	203	209	210	212	211	214	215
95	21.6	39.4	58.5	77.1	95.4	114	129	145	157	169	176	184	189	193	195	197	196	199	199
100	13.3	27.4	44.2	62.0	79.9	96.6	113	129	141	152	160	168	172	177	179	181	180	182	182
105	9.52	18.5	31.7	47.4	63.9	79.8	95.5	111	123	134	142	149	154	159	160	162	161	164	164
110	7.68	14.3	22.6	34.2	48.4	63.0	77.5	91.2	104	115	122	130	134	139	141	143	142	144	144
115	5.60	11.9	18.2	25.7	35.4	47.1	60.0	72.3	84.1	93.4	102	109	113	118	120	122	121	123	122
120	3.66	9.36	15.2	21.2	27.2	35.2	44.5	54.5	64.7	73.0	80.6	86.5	91.7	95.2	97.8	98.6	98.8	101	99.3
125	1.77	6.77	12.1	17.7	23.1	28.2	34.0	40.7	47.9	54.2	60.6	65.6	70.3	73.4	75.7	76.5	76.7	78.2	77.1
130	1.32	4.18	9.01	14.1	19.0	23.8	28.3	32.4	36.4	40.7	44.6	47.9	51.4	53.7	55.6	56.2	56.3	57.5	56.4
135	1.46	1.87	5.83	10.3	14.9	19.1	23.3	27.0	30.2	32.5	34.6	36.3	38.3	39.9	41.2	41.5	41.6	42.3	41.6
140	1.63	1.54	2.82	6.59	10.6	14.4	18.1	21.4	24.2	26.4	28.4	29.9	31.2	32.1	32.6	32.8	32.8	33.1	32.7
145	1.61	1.63	1.65	3.07	6.33	9.59	12.9	15.7	18.2	20.1	22.0	23.4	24.6	25.4	26.0	26.2	26.2	26.4	26.0
150	1.73	1.74	1.78	1.78	2.52	4.95	7.64	9.96	12.1	13.8	15.5	16.8	17.9	18.6	19.2	19.4	19.4	19.6	19.2
155	1.86	1.96	2.22	2.02	1.91	1.91	2.84	4.48	6.17	7.58	9.01	10.1	11.1	11.7	12.3	12.5	12.5	12.8	12.4
160	1.93	2.14	2.04	1.94	1.93	1.91	1.89	1.80	1.69	2.06	2.96	3.74	4.54	5.05	5.57	5.69	5.78	6.03	5.71
165	1.90	1.91	1.91	1.93	1.94	2.09	2.14	1.88	1.67	1.69	1.71	1.69	1.63	1.63	1.66	1.66	1.65	1.54	1.50
170	1.87	1.88	1.89	1.90	1.91	1.91	1.85	1.73	1.73	1.75	1.75	1.71	1.67	1.66	1.68	1.67	1.66	1.60	1.56
175	1.89	1.90	1.90	1.91	1.91	1.91	1.85	1.72	1.68	1.67	1.66	1.66	1.67	1.70	1.72	1.71	1.69	1.66	1.60
180	1.87	1.88	1.88	1.87	1.88	1.89	1.80	1.69	1.67	1.66	1.66	1.67	1.68	1.70	1.71	1.70	1.66	1.73	1.67

C Range: 0 - 360DEG
 C Interval: 5.0DEG
 Test Speed: HIGH
 Temperature:25DEG
 Operators:yechihong
 Test Date:2020-10-23

γ Range: 0 - 180DEG
 γ Interval: 0.5DEG
 Test System:EVERFINE GO-2000A_V1 SYSTEM V2.0.272
 Humidity:70%
 Test Distance:8.425m [K=1.0000]
 Remarks:

LUMINOUS DISTRIBUTION INTENSITY DATA

Test:U:120.9V I:0.5347A P:63.97W PF:0.9893 Lamp Flux:1625.18x1 lm		
NAME: NVV5494800L30D1SN	TYPE:	WEIGHT:
DIM.:	SPEC.:	SERIAL No.:20201023A0001
MFR.: AFX	SUR.:1.24*0.12	PROTECTION ANGLE:

Table--3

UNIT: cd

C(DEG) γ (DEG)	190	195	200	205	210	215	220	225	230	235	240	245	250	255	260	265	270	275	280
0	271	271	271	271	271	271	271	272	271	272	272	272	272	272	271	270	270	270	269
5	271	272	271	272	272	272	272	272	272	272	272	272	272	271	271	270	270	269	269
10	273	272	272	272	272	272	272	271	271	271	271	270	269	268	268	267	267	267	267
15	272	272	272	271	271	270	270	270	269	268	267	266	265	263	263	263	262	263	263
20	270	270	270	269	268	267	267	265	264	263	262	260	258	256	256	255	256	256	257
25	267	266	265	265	264	263	262	260	258	256	254	252	247	247	244	245	245	247	247
30	262	260	260	259	258	257	255	252	249	247	243	241	236	236	232	234	233	237	237
35	256	255	252	252	249	248	245	244	239	237	231	229	223	222	218	219	220	224	225
40	250	249	245	245	241	239	234	233	227	225	218	215	208	206	203	204	204	208	211
45	252	249	243	241	235	232	225	221	215	211	204	199	191	188	185	185	187	191	195
50	256	253	247	243	235	229	219	212	203	196	187	181	172	169	166	166	168	173	178
55	258	254	248	244	236	229	217	207	193	182	171	163	152	148	144	145	148	154	159
60	257	254	248	244	235	227	215	203	188	174	156	145	132	126	122	122	126	133	140
65	255	251	245	241	231	224	211	198	182	167	146	128	110	103	98.2	98.1	103	111	121
70	249	247	241	235	226	218	204	192	175	159	137	115	89.5	79.2	74.1	74.0	80.6	91.3	105
75	243	240	234	228	219	211	197	183	166	150	127	103	71.9	57.5	50.8	51.8	59.4	73.9	93.3
80	234	232	225	220	210	201	187	173	156	139	116	91.4	59.0	38.8	29.2	29.3	41.3	61.5	81.8
85	223	221	214	209	199	190	175	162	144	127	104	78.7	46.3	25.6	11.8	13.3	28.8	48.7	69.0
90	211	208	202	196	187	177	163	149	131	114	90.6	65.3	33.7	14.9	2.92	4.41	17.5	36.4	55.4
95	196	193	187	181	172	162	148	133	116	97.7	76.1	51.2	22.2	6.91	0.94	1.33	8.92	24.4	42.6
100	179	176	170	164	155	145	131	117	99.9	82.0	61.1	37.6	13.2	3.89	0.69	0.71	4.62	14.5	28.0
105	161	158	152	146	137	127	114	98.7	83.1	65.9	46.3	25.8	8.85	2.66	0.67	0.66	3.41	9.21	18.2
110	141	138	132	126	117	108	95.1	80.5	65.9	50.0	33.3	18.4	7.00	1.42	0.70	0.71	1.87	6.76	11.8
115	120	116	111	105	96.4	86.8	75.8	62.6	49.5	36.4	24.7	14.8	5.10	0.84	0.76	0.77	0.91	4.65	9.23
120	97.4	93.4	89.0	82.5	75.4	66.8	57.4	46.4	36.4	27.8	20.1	12.0	3.16	0.88	0.84	0.85	0.91	2.89	6.77
125	75.3	71.6	67.6	61.9	55.9	49.1	42.3	35.3	28.6	23.1	16.7	9.19	1.39	0.96	0.93	0.94	0.97	1.43	4.62
130	55.1	52.1	49.1	45.0	41.2	36.8	32.6	28.7	24.1	19.0	13.1	6.29	1.15	1.04	1.02	1.02	1.04	1.09	2.70
135	40.7	38.7	36.5	34.4	32.4	29.8	27.0	23.4	19.5	14.8	9.44	3.42	1.24	1.11	1.10	1.10	1.11	1.14	1.30
140	32.2	31.0	29.9	28.1	26.2	23.8	21.2	18.0	14.5	10.5	5.83	1.40	1.33	1.31	1.32	1.32	1.32	1.32	1.33
145	25.5	24.5	23.4	21.8	20.1	17.9	15.5	12.5	9.57	6.12	2.43	1.42	1.60	1.42	1.41	1.41	1.51	1.50	1.39
150	18.8	17.8	16.9	15.4	13.9	11.9	9.83	7.30	4.79	2.24	1.49	1.49	1.52	1.49	1.48	1.48	1.48	1.48	1.48
155	12.0	11.2	10.4	9.10	7.83	6.19	4.51	2.62	1.50	1.44	1.59	1.77	1.60	1.63	1.64	1.66	1.66	1.86	2.07
160	5.41	4.72	4.13	3.19	2.33	1.61	1.50	1.50	1.50	1.49	1.49	1.67	1.64	1.72	1.74	1.75	1.75	1.76	1.73
165	1.52	1.60	1.61	1.61	1.54	1.52	1.51	1.52	1.54	1.54	1.56	1.57	1.58	1.71	1.79	1.82	1.83	1.82	1.81
170	1.59	1.63	1.67	1.67	1.64	1.57	1.57	1.58	1.66	1.60	1.61	1.60	1.62	1.64	1.71	1.84	1.86	1.90	1.99
175	1.60	1.57	1.56	1.59	1.59	1.61	1.62	1.63	1.63	1.63	1.64	1.63	1.64	1.65	1.65	1.76	1.84	1.86	1.86
180	1.66	1.64	1.63	1.63	1.64	1.64	1.65	1.65	1.66	1.66	1.65	1.65	1.65	1.66	1.66	1.71	1.83	1.87	1.88

C Range: 0 - 360DEG
 C Interval: 5.0DEG
 Test Speed: HIGH
 Temperature:25DEG
 Operators:yechihong
 Test Date:2020-10-23

γ Range: 0 - 180DEG
 γ Interval: 0.5DEG
 Test System:EVERFINE GO-2000A_V1 SYSTEM V2.0.272
 Humidity:70%
 Test Distance:8.425m [K=1.0000]
 Remarks:

LUMINOUS DISTRIBUTION INTENSITY DATA

Test:U:120.9V I:0.5347A P:63.97W PF:0.9893 Lamp Flux:1625.18x1 lm		
NAME: NVV5494800L30D1SN	TYPE:	WEIGHT:
DIM.:	SPEC.:	SERIAL No.:20201023A0001
MFR.: AFX	SUR.:1.24*0.12	PROTECTION ANGLE:

Table--4

UNIT: cd

C(DEG) γ (DEG)	285	290	295	300	305	310	315	320	325	330	335	340	345	350	355				
0	269	268	268	269	268	268	269	268	268	268	268	268	268	269	269				
5	268	268	268	268	269	269	269	269	269	269	269	269	269	269	269				
10	267	267	267	267	269	269	269	269	270	270	270	270	270	271	271				
15	263	264	265	266	267	268	269	269	269	270	270	270	271	271	271				
20	258	259	261	262	264	265	266	267	267	268	269	269	269	270	269				
25	251	252	254	257	259	260	261	263	264	265	265	266	266	266	266				
30	241	242	247	248	252	253	256	257	258	260	261	261	261	262	261				
35	230	232	237	238	243	244	248	248	251	253	255	255	256	257	256				
40	216	219	225	227	233	235	239	241	245	247	250	252	253	254	254				
45	201	205	211	215	222	226	232	236	243	246	251	254	257	257	257				
50	184	189	197	203	213	220	230	236	245	249	255	258	260	261	261				
55	166	173	184	194	208	219	230	237	246	250	256	259	262	263	262				
60	149	160	175	189	204	216	228	236	244	249	255	259	261	262	261				
65	135	150	168	183	200	211	224	232	241	246	252	256	258	259	258				
70	124	142	160	176	192	205	218	226	236	241	247	249	252	253	253				
75	114	132	151	167	184	197	210	219	228	233	240	241	245	245	246				
80	102	121	140	156	173	187	200	209	219	224	230	232	236	235	236				
85	89.0	109	127	144	162	175	188	198	207	212	219	221	224	224	224				
90	75.7	94.7	114	131	148	162	175	184	193	199	205	208	211	210	211				
95	60.7	79.1	96.9	115	131	146	159	168	177	183	189	192	195	194	195				
100	45.0	62.3	78.3	93.7	110	125	141	150	160	166	172	174	178	177	177				
105	31.3	46.4	61.9	78.0	92.4	105	115	127	140	147	153	155	158	158	158				
110	19.5	30.9	44.4	58.4	72.9	86.9	97.3	105	114	125	132	135	137	137	137				
115	13.9	20.0	28.4	40.3	51.4	63.9	75.7	86.1	92.1	99.0	110	113	115	115	115				
120	11.1	15.3	20.0	26.2	34.8	44.7	53.4	63.5	71.5	76.1	83.4	90.0	91.7	92.3	91.0				
125	8.33	12.1	15.8	19.3	23.7	29.7	36.6	43.3	50.8	55.8	59.0	67.3	69.0	69.6	68.5				
130	5.87	9.14	12.4	15.6	18.5	21.3	25.2	30.2	34.4	39.4	40.6	46.0	48.8	49.5	48.5				
135	3.55	6.33	9.11	12.0	14.6	17.0	19.5	22.6	25.4	28.2	29.8	31.4	35.1	35.8	35.0				
140	1.67	3.78	6.11	8.49	10.8	13.0	15.0	17.2	19.4	22.0	23.7	23.6	27.9	28.3	28.1				
145	1.40	1.82	3.49	5.27	7.10	8.98	10.7	12.4	14.0	15.9	18.0	18.9	21.5	21.6	21.5				
150	1.49	1.48	1.58	2.62	3.88	5.20	6.49	7.83	9.06	10.4	11.7	13.0	14.6	14.9	14.7				
155	1.81	1.60	1.57	1.57	1.64	2.10	2.82	3.74	4.51	5.38	6.10	7.02	7.63	8.28	7.95				
160	1.72	1.70	1.68	1.66	1.63	1.53	1.48	1.49	1.55	1.68	1.78	1.95	1.93	2.21	1.99				
165	1.79	1.79	1.78	1.79	1.82	1.67	1.57	1.53	1.53	1.55	1.54	1.54	1.52	1.48	1.44				
170	2.09	1.98	1.90	1.90	1.85	1.71	1.61	1.61	1.59	1.60	1.62	1.62	1.59	1.55	1.52				
175	1.86	1.86	1.86	1.85	1.77	1.66	1.63	1.63	1.64	1.66	1.65	1.67	1.65	1.62	1.58				
180	1.88	1.88	1.88	1.88	1.80	1.69	1.66	1.65	1.66	1.67	1.68	1.70	1.71	1.70	1.66				

C Range: 0 - 360DEG
 C Interval: 5.0DEG
 Test Speed: HIGH
 Temperature:25DEG
 Operators:yechihong
 Test Date:2020-10-23

γ Range: 0 - 180DEG
 γ Interval: 0.5DEG
 Test System:EVERFINE GO-2000A_V1 SYSTEM V2.0.272
 Humidity:70%
 Test Distance:8.425m [K=1.0000]
 Remarks:

Photometric Data Table [cd]

G/C	0.0	5.0	10.0	15.0	20.0	25.0	30.0	35.0	40.0	45.0
0.0	270.3	270.2	270.7	270.7	270.6	271.0	271.0	271.0	271.5	272.1
2.5	270.1	270.7	271.0	271.1	270.8	271.5	271.3	271.1	271.3	271.4
5.0	270.9	271.1	271.5	271.1	271.6	271.2	271.4	271.2	271.4	271.2
7.5	271.2	271.4	271.7	272.0	271.7	271.5	270.8	270.9	270.8	270.9
10.0	272.2	272.1	272.4	271.9	271.4	271.1	271.1	271.0	270.7	270.1
12.5	272.6	271.9	272.3	272.1	271.7	270.5	270.8	270.3	269.8	269.5
15.0	271.8	271.9	271.9	271.7	270.8	270.8	269.8	269.8	268.5	268.0
17.5	271.5	271.4	271.5	270.5	270.1	269.7	269.1	268.8	267.0	266.2
20.0	270.3	270.1	270.0	269.7	269.0	268.4	268.0	266.7	265.0	263.8
22.5	268.4	268.7	268.5	267.9	266.9	267.0	265.8	264.5	262.9	260.8
25.0	266.5	266.6	266.5	265.6	264.9	264.2	263.4	261.6	260.5	258.1
27.5	264.1	264.2	263.7	263.5	262.2	261.4	260.1	259.0	256.9	254.7
30.0	261.6	261.8	261.0	260.4	259.2	258.4	257.0	255.5	253.3	248.8
32.5	258.9	258.8	258.1	257.5	256.4	254.7	253.2	250.1	249.1	244.5
35.0	256.0	256.5	255.0	254.7	252.9	249.9	249.4	245.7	244.1	239.5
37.5	254.6	254.5	253.4	251.9	250.2	246.5	245.8	241.1	239.6	234.2
40.0	253.8	253.4	251.9	250.7	248.2	243.5	242.0	237.1	234.3	228.6
42.5	254.8	254.7	252.7	250.6	247.3	242.2	239.1	233.1	229.8	223.0
45.0	257.6	257.2	255.2	252.1	248.4	241.5	237.9	230.1	225.6	217.6
47.5	259.8	259.1	256.9	254.1	250.0	243.0	237.7	228.6	222.0	212.7
50.0	261.0	260.7	258.6	255.3	250.6	244.3	238.7	228.7	220.2	208.7
52.5	262.2	261.4	259.7	256.3	251.7	244.3	239.2	228.7	219.7	206.0
55.0	262.2	261.7	259.7	256.7	251.4	244.3	238.5	228.5	218.6	204.6
57.5	262.2	261.7	259.8	255.9	250.8	243.5	237.9	227.3	217.5	203.1
60.0	261.4	260.5	258.7	255.4	250.0	242.3	236.5	226.2	215.6	201.1
62.5	259.6	259.5	257.1	253.4	248.7	241.1	234.7	224.0	213.2	198.6
65.0	258.0	257.6	255.4	250.2	246.8	238.5	232.4	221.3	210.6	195.7
67.5	255.5	254.9	252.8	247.7	244.3	236.0	229.5	218.3	207.4	192.3
70.0	252.6	250.4	249.8	244.5	240.9	233.1	226.6	215.3	204.2	188.3
72.5	249.5	247.0	246.4	241.2	237.5	229.2	222.9	211.1	200.3	184.1
75.0	245.4	243.0	242.0	237.3	233.4	225.2	218.3	207.1	195.4	179.5
77.5	241.1	238.6	237.6	232.5	228.3	220.4	213.6	202.4	190.8	174.5
80.0	236.1	233.4	232.7	227.7	223.4	215.4	208.4	196.9	185.4	169.2
82.5	230.1	228.0	226.7	222.1	217.6	209.9	202.3	191.2	179.3	163.5
85.0	224.4	221.8	220.8	215.7	211.6	203.5	196.4	184.8	173.3	157.3
87.5	217.9	215.2	214.1	208.8	204.8	196.7	189.3	178.3	166.5	150.7
90.0	210.5	208.2	206.9	201.7	197.1	189.4	181.7	170.7	159.1	143.2
92.5	203.0	200.4	199.3	194.0	189.3	181.3	173.9	162.6	151.2	135.3
95.0	194.8	192.4	190.9	185.9	181.2	173.0	165.3	154.2	142.5	126.5
97.5	186.2	183.9	182.5	177.3	172.2	164.4	156.2	145.0	132.9	116.9
100.0	177.4	174.9	173.5	168.3	163.3	154.8	146.8	135.1	122.0	105.9
102.5	167.8	165.7	163.8	158.7	153.5	145.1	136.5	123.8	111.0	97.80
105.0	158.1	155.8	154.0	148.6	143.2	135.0	125.0	112.6	101.7	89.84
107.5	147.9	145.6	143.8	138.4	132.6	124.2	113.5	103.4	93.13	80.77
110.0	137.1	135.1	132.9	127.7	121.8	112.4	102.2	94.07	83.54	69.89
112.5	126.2	124.2	121.8	116.6	111.0	101.0	92.37	84.39	72.03	58.97
115.0	115.0	113.0	110.6	105.6	99.21	89.64	82.66	73.56	60.93	49.44
117.5	103.2	101.6	98.48	94.37	87.70	79.20	72.63	61.84	50.85	40.40
120.0	91.03	90.03	87.08	83.23	75.98	69.53	61.36	51.31	41.92	32.49
122.5	79.51	78.54	75.54	72.47	64.70	59.67	50.32	42.14	34.00	26.57
125.0	68.25	67.34	64.53	61.90	54.63	49.38	40.72	34.47	28.02	22.41
127.5	57.72	56.73	54.50	52.12	45.90	39.97	33.29	28.74	23.45	20.13
130.0	48.23	47.34	45.68	43.31	37.54	32.57	28.22	24.22	20.83	18.27
132.5	40.64	39.82	38.81	36.51	31.39	27.26	24.32	21.74	18.76	16.34
135.0	34.69	34.18	33.09	30.70	27.03	24.38	21.82	19.27	16.82	14.24
137.5	30.97	30.85	30.00	27.32	23.92	21.56	19.13	16.95	14.65	12.24
140.0	27.73	27.75	26.87	23.99	20.75	18.79	16.80	14.73	12.52	10.33
142.5	24.50	24.55	23.71	20.80	17.95	16.24	14.36	12.48	10.47	8.497
145.0	21.18	21.24	20.46	17.32	15.14	13.66	11.92	10.28	8.499	6.743
147.5	17.80	17.89	16.71	14.12	12.45	11.13	9.598	8.182	6.599	5.036
150.0	14.38	14.56	13.00	11.27	9.855	8.676	7.379	6.165	4.779	3.444
152.5	11.07	11.22	9.611	8.382	7.292	6.351	5.279	4.248	3.114	2.076
155.0	7.877	7.921	6.463	5.740	4.901	4.177	3.343	2.560	1.795	1.512
157.5	4.692	4.705	3.751	3.334	2.764	2.300	1.821	1.583	1.526	1.526
160.0	2.005	2.014	1.749	1.680	1.568	1.535	1.539	1.539	1.539	1.580
162.5	1.589	1.589	1.557	1.557	1.548	1.544	1.557	1.566	1.593	1.603
165.0	1.593	1.593	1.557	1.557	1.570	1.562	1.562	1.580	1.598	1.711
167.5	1.616	1.612	1.575	1.575	1.580	1.580	1.584	1.593	1.607	1.683
170.0	1.634	1.612	1.584	1.584	1.593	1.593	1.607	1.603	1.612	1.620
172.5	1.684	1.652	1.630	1.625	1.616	1.616	1.629	1.625	1.639	1.634
175.0	1.756	1.743	1.679	1.652	1.643	1.643	1.643	1.648	1.657	1.661
177.5	1.747	1.711	1.675	1.652	1.643	1.643	1.648	1.648	1.652	1.657
180.0	1.725	1.698	1.661	1.643	1.634	1.630	1.630	1.639	1.648	1.643

C Range: 0 - 360DEG
 C Interval: 5.0DEG
 Test Speed: HIGH
 Temperature: 25DEG
 Operators: yechihong
 Test Date: 2020-10-23

γ Range: 0 - 180DEG
 γ Interval: 0.5DEG
 Test System: EVERFINE GO-2000A_V1 SYSTEM V2.0.272
 Humidity: 70%
 Test Distance: 8.425m [K=1.0000]
 Remarks:

Photometric Data Table [cd]

G/C	50.0	55.0	60.0	65.0	70.0	75.0	80.0	85.0	90.0	95.0
0.0	271.4	272.3	272.5	272.3	272.3	271.8	270.8	270.4	269.8	269.8
2.5	271.8	271.8	272.0	272.1	271.4	271.1	270.6	270.2	269.6	269.0
5.0	271.4	270.9	271.0	270.8	270.2	269.9	269.4	269.1	268.8	268.3
7.5	270.4	270.2	270.2	269.8	268.8	268.4	267.5	267.0	266.7	266.6
10.0	269.9	268.9	268.7	267.8	266.2	265.7	265.2	265.2	265.1	264.7
12.5	268.3	267.4	266.7	265.5	264.2	263.5	262.4	262.7	262.4	262.7
15.0	266.8	265.6	264.6	263.2	261.1	260.3	259.5	259.5	259.4	259.7
17.5	264.7	263.0	261.2	259.9	257.3	256.3	255.5	255.4	255.7	256.8
20.0	261.7	260.5	258.2	256.4	253.5	251.2	250.9	250.2	251.6	251.6
22.5	259.3	257.2	254.5	250.4	248.8	245.9	246.1	244.8	247.5	246.6
25.0	255.8	252.4	250.0	245.8	243.7	240.9	241.3	239.8	242.6	242.0
27.5	251.4	247.6	245.8	240.8	238.4	235.2	235.2	234.5	236.7	237.0
30.0	247.4	242.6	240.5	235.1	231.9	228.8	228.8	228.1	230.9	231.2
32.5	242.5	237.6	234.8	229.1	225.6	222.2	221.8	221.3	224.1	225.0
35.0	236.8	231.9	222.8	222.8	218.6	214.9	214.5	214.1	216.8	218.1
37.5	231.3	225.7	222.0	215.7	210.6	206.9	206.6	206.5	209.6	211.2
40.0	225.0	219.3	215.0	208.4	202.8	198.7	197.7	197.6	201.1	203.1
42.5	218.9	212.6	207.6	200.7	194.5	189.7	189.4	188.5	192.3	194.5
45.0	212.6	205.3	199.5	192.4	184.9	180.6	179.8	179.6	183.4	186.0
47.5	205.8	198.3	191.5	183.8	176.1	170.9	169.5	169.7	173.5	176.7
50.0	200.5	191.3	183.3	174.9	166.3	160.9	159.7	159.3	163.5	167.1
52.5	195.6	184.6	174.9	165.8	156.1	150.4	148.6	149.1	153.1	157.6
55.0	191.9	178.9	167.3	156.6	145.9	139.6	137.5	138.0	142.0	146.9
57.5	190.1	174.0	159.5	147.3	135.2	128.7	126.3	126.6	131.5	136.7
60.0	187.3	170.7	153.0	138.7	124.7	117.6	114.7	114.9	120.3	126.1
62.5	184.6	167.4	147.5	130.3	113.6	106.2	102.3	103.0	108.4	115.6
65.0	181.2	163.8	143.1	122.9	102.7	94.75	90.05	91.31	96.33	105.2
67.5	177.3	160.0	138.9	116.4	92.02	83.41	78.32	79.51	85.61	95.19
70.0	173.6	155.6	134.3	111.4	82.34	71.98	65.79	67.47	74.38	86.05
72.5	169.2	151.0	129.2	106.0	73.25	61.17	54.45	55.62	63.71	77.48
75.0	164.2	146.1	124.0	100.6	65.69	50.83	43.20	44.42	53.99	70.36
77.5	159.3	140.7	118.2	94.70	59.20	41.34	31.82	33.49	45.24	64.28
80.0	153.6	135.2	112.3	88.80	53.05	33.42	22.19	23.87	37.78	58.11
82.5	147.6	129.2	106.2	82.44	46.81	27.11	14.01	15.88	31.68	51.69
85.0	141.5	122.8	98.97	76.05	40.59	21.49	7.474	9.654	25.91	45.36
87.5	134.4	116.3	92.21	69.58	34.38	16.26	3.495	5.583	20.38	39.09
90.0	127.1	108.8	85.03	62.88	28.53	11.55	1.520	2.862	15.16	32.84
92.5	119.1	100.7	77.35	55.85	22.81	7.777	0.9825	1.602	10.85	26.91
95.0	110.2	92.24	69.45	48.79	17.83	5.167	0.8154	1.335	7.810	21.58
97.5	99.29	83.18	61.69	41.38	13.51	3.885	0.7698	1.022	5.879	17.06
100.0	90.51	75.09	53.39	34.73	10.26	3.305	0.7424	0.8600	4.932	13.32
102.5	82.90	66.82	46.74	28.19	8.467	2.732	0.7288	0.8237	4.265	10.82
105.0	74.23	59.05	39.26	22.12	7.375	2.056	0.7290	0.8058	3.575	9.520
107.5	65.00	50.25	30.75	17.28	6.198	1.433	0.7604	0.8058	2.864	8.601
110.0	54.72	41.18	24.28	14.63	5.170	0.9550	0.7741	0.8193	2.178	7.678
112.5	45.74	32.49	19.61	12.84	4.187	0.8963	0.8280	0.8421	1.490	6.643
115.0	36.77	26.12	16.64	11.39	3.330	0.9281	0.8736	0.8737	1.025	5.600
117.5	29.30	21.71	15.16	10.00	2.523	0.9597	0.9143	0.9147	1.005	4.653
120.0	24.10	18.56	13.50	8.688	1.770	0.9962	0.9595	0.9598	1.037	3.663
122.5	20.71	16.97	11.95	7.444	1.264	1.032	1.009	1.010	1.073	2.653
125.0	18.72	15.20	10.44	6.261	1.118	1.068	1.046	1.055	1.127	1.770
127.5	16.92	13.48	9.009	5.144	1.145	1.109	1.095	1.091	1.145	1.299
130.0	14.98	11.78	7.658	4.074	1.172	1.159	1.136	1.150	1.290	1.317
132.5	13.16	10.20	6.342	3.050	1.204	1.186	1.181	1.200	1.231	1.377
135.0	11.36	8.610	5.070	2.113	1.240	1.309	1.231	1.254	1.334	1.463
137.5	9.625	7.087	3.853	1.498	1.299	1.359	1.285	1.313	1.453	1.467
140.0	7.935	5.634	2.729	1.462	1.498	1.499	1.494	1.494	1.503	1.628
142.5	6.307	4.250	1.821	1.480	1.552	1.676	1.534	1.544	1.548	1.729
145.0	4.768	2.950	1.440	1.467	1.562	1.598	1.593	1.593	1.593	1.607
147.5	3.324	1.873	1.439	1.449	1.584	1.607	1.621	1.625	1.630	1.644
150.0	2.075	1.471	1.462	1.458	1.580	1.639	1.661	1.657	1.661	1.733
152.5	1.504	1.489	1.494	1.490	1.828	1.729	1.756	1.761	1.779	1.793
155.0	1.507	1.508	1.630	1.652	1.784	1.734	1.806	1.825	1.842	1.856
157.5	1.534	1.621	1.652	1.666	1.716	1.711	1.815	1.874	1.883	1.893
160.0	1.598	1.625	1.652	1.661	1.871	1.729	1.775	1.869	1.901	1.932
162.5	1.625	1.649	1.661	1.666	1.675	1.693	1.734	1.838	1.906	1.919
165.0	1.856	1.901	1.901	1.721	1.670	1.675	1.693	1.783	1.892	1.897
167.5	1.830	1.869	1.924	1.874	1.661	1.666	1.671	1.738	1.870	1.888
170.0	1.630	1.630	1.639	1.643	1.648	1.652	1.661	1.707	1.842	1.874
172.5	1.652	1.657	1.657	1.652	1.657	1.657	1.661	1.693	1.842	1.883
175.0	1.666	1.670	1.670	1.666	1.666	1.670	1.679	1.702	1.851	1.888
177.5	1.657	1.661	1.661	1.652	1.661	1.661	1.661	1.680	1.842	1.883
180.0	1.657	1.657	1.657	1.657	1.666	1.657	1.657	1.698	1.838	1.874

C Range: 0 - 360DEG
 C Interval: 5.0DEG
 Test Speed: HIGH
 Temperature: 25DEG
 Operators: yechihong
 Test Date: 2020-10-23

γ Range: 0 - 180DEG
 γ Interval: 0.5DEG
 Test System: EVERFINE GO-2000A_V1 SYSTEM V2.0.272
 Humidity: 70%
 Test Distance: 8.425m [K=1.0000]
 Remarks:

Photometric Data Table [cd]

G/C	100.0	105.0	110.0	115.0	120.0	125.0	130.0	135.0	140.0	145.0
0.0	269.3	268.7	268.2	268.4	268.6	268.5	268.4	268.6	268.4	268.2
2.5	268.3	268.4	267.4	267.8	268.1	268.6	268.7	268.5	268.4	268.6
5.0	267.8	267.0	267.2	267.4	267.9	268.3	268.6	268.7	268.5	268.7
7.5	266.5	266.2	266.3	266.7	267.3	267.9	268.0	268.3	268.6	268.6
10.0	264.7	264.6	264.7	265.4	266.0	267.2	267.7	267.8	268.0	268.6
12.5	262.7	262.5	263.0	264.0	264.9	265.7	266.6	267.2	267.6	267.8
15.0	259.6	260.5	260.7	261.8	262.9	264.5	264.9	265.9	266.6	267.0
17.5	256.9	257.4	258.2	259.9	260.6	262.5	263.3	264.4	264.9	266.0
20.0	253.8	254.1	255.6	257.3	258.2	259.8	260.8	262.7	263.4	264.1
22.5	249.5	248.9	251.8	253.5	255.1	257.4	258.3	260.0	261.2	262.4
25.0	244.8	244.9	248.1	248.5	251.6	253.9	255.6	257.5	258.5	259.8
27.5	240.1	240.4	243.7	244.4	248.1	248.8	251.7	253.8	255.6	256.5
30.0	234.4	235.0	238.5	239.6	243.2	244.7	248.2	248.8	251.9	252.8
32.5	228.2	229.8	233.5	234.7	238.9	240.2	244.0	244.9	248.4	248.1
35.0	221.8	223.8	227.8	229.2	233.7	235.4	239.1	240.6	244.3	244.5
37.5	215.1	216.9	221.3	223.6	228.1	230.3	234.5	236.2	239.8	240.8
40.0	207.9	210.3	215.1	217.5	222.6	224.7	229.7	231.7	236.2	237.6
42.5	199.9	203.2	208.1	211.0	216.6	219.6	224.9	227.4	233.0	235.2
45.0	191.6	195.1	200.6	204.6	210.5	214.1	220.8	224.2	230.6	234.3
47.5	182.8	187.0	193.4	197.5	204.8	209.3	217.2	222.3	230.7	235.2
50.0	173.3	178.3	185.5	191.2	199.4	205.7	215.4	222.3	231.5	236.7
52.5	164.1	169.6	177.8	184.9	194.8	203.1	215.0	222.9	232.1	237.4
55.0	154.4	160.9	170.5	179.0	191.8	202.4	214.6	222.7	232.3	237.8
57.5	144.6	152.0	163.4	174.7	189.6	201.1	213.9	222.2	231.7	237.7
60.0	135.2	144.1	157.7	171.5	187.8	199.6	212.5	221.1	231.3	236.9
62.5	125.5	137.2	153.1	168.3	184.7	197.6	210.6	219.6	230.0	235.8
65.0	117.1	130.9	149.3	165.0	181.4	194.9	208.6	217.7	228.0	234.1
67.5	109.5	126.0	145.0	161.0	178.1	191.7	205.6	215.1	225.9	231.9
70.0	101.9	121.3	140.1	156.7	173.9	188.4	202.4	212.2	223.1	229.4
72.5	96.72	115.8	135.4	152.2	169.7	184.0	199.1	209.1	219.7	226.1
75.0	91.16	110.2	130.4	147.2	164.9	179.6	194.6	204.9	216.2	222.5
77.5	84.93	104.9	124.4	141.9	159.6	174.8	190.3	200.8	211.6	218.5
80.0	78.67	98.61	118.8	136.1	154.3	169.3	185.0	196.1	206.9	213.9
82.5	72.50	92.21	112.5	130.3	148.2	163.7	179.5	190.9	202.0	208.9
85.0	66.18	85.99	106.1	124.1	142.1	157.6	173.6	185.3	196.2	203.4
87.5	59.38	79.38	98.79	117.3	135.8	151.2	167.0	179.1	190.4	197.4
90.0	52.67	72.13	91.78	110.2	128.9	144.4	160.3	172.4	183.9	191.2
92.5	46.04	65.28	84.49	103.1	121.4	136.7	152.8	165.1	176.4	183.7
95.0	39.44	58.46	77.13	95.39	113.7	129.2	145.0	157.2	168.7	176.2
97.5	33.22	50.95	69.64	87.80	105.4	121.2	136.9	149.3	160.5	168.2
100.0	27.41	44.22	62.02	79.88	96.57	112.9	128.6	141.0	152.0	159.8
102.5	22.42	37.74	54.37	71.85	88.50	104.3	119.6	132.1	143.3	151.0
105.0	18.53	31.66	47.39	63.91	79.77	95.48	110.7	123.1	133.9	141.8
107.5	15.78	26.50	40.34	55.91	71.27	86.47	100.5	113.7	124.4	132.1
110.0	14.34	22.59	34.24	48.42	62.97	77.54	91.24	104.0	114.6	122.3
112.5	13.12	19.71	29.30	41.40	54.72	68.67	81.63	94.03	104.1	112.1
115.0	11.87	18.18	25.69	35.41	47.12	59.99	72.29	84.05	93.39	101.7
117.5	10.64	16.70	22.93	30.90	40.49	51.86	63.11	74.27	83.08	91.23
120.0	9.359	15.18	21.20	27.21	35.19	44.49	54.51	64.72	72.96	80.64
122.5	8.053	13.68	19.45	25.09	30.92	38.67	46.83	55.82	63.21	70.33
125.0	6.768	12.15	17.70	23.09	28.23	34.03	40.74	47.90	54.20	60.58
127.5	5.471	10.59	15.87	21.12	26.02	30.77	35.76	41.76	46.48	51.74
130.0	4.175	9.010	14.07	19.05	23.78	28.32	32.42	36.42	40.70	44.57
132.5	2.943	7.428	12.19	16.96	21.47	25.84	29.77	33.15	35.58	38.85
135.0	1.866	5.833	10.32	14.85	19.14	23.31	27.03	30.22	32.52	34.61
137.5	1.508	4.296	8.462	12.72	16.75	20.75	24.24	27.22	29.49	31.55
140.0	1.543	2.823	6.594	10.58	14.37	18.12	21.42	24.24	26.41	28.40
142.5	1.621	1.769	4.793	8.414	11.97	15.50	18.56	21.22	23.29	25.22
145.0	1.625	1.652	3.067	6.329	9.591	12.86	15.69	18.19	20.14	21.98
147.5	1.670	1.698	1.862	4.305	7.220	10.22	12.81	15.13	16.96	18.72
150.0	1.743	1.780	1.783	2.521	4.945	7.636	9.961	12.10	13.82	15.48
152.5	2.004	2.314	2.108	1.870	2.889	5.116	7.164	9.094	10.66	12.23
155.0	1.965	2.224	2.020	1.915	1.906	2.837	4.478	6.173	7.579	9.015
157.5	1.906	1.938	1.937	1.929	1.915	1.892	2.228	3.412	4.615	5.881
160.0	2.141	2.037	1.942	1.928	1.910	1.888	1.802	1.692	2.060	2.962
162.5	1.924	1.928	1.942	1.929	1.956	2.078	1.896	1.652	1.607	1.575
165.0	1.910	1.910	1.933	1.942	2.087	2.137	1.879	1.666	1.693	1.707
167.5	1.892	1.897	2.000	2.054	1.930	1.918	1.779	1.797	1.856	1.824
170.0	1.883	1.892	1.901	1.906	1.906	1.851	1.734	1.734	1.752	1.746
172.5	1.888	1.892	1.901	1.910	1.910	1.847	1.711	1.666	1.652	1.634
175.0	1.897	1.897	1.906	1.915	1.915	1.847	1.716	1.679	1.670	1.657
177.5	1.888	1.888	1.897	1.901	1.901	1.824	1.698	1.675	1.670	1.652
180.0	1.879	1.879	1.874	1.883	1.888	1.802	1.689	1.666	1.661	1.661

C Range: 0 - 360DEG
 C Interval: 5.0DEG
 Test Speed: HIGH
 Temperature: 25DEG
 Operators: yechihong
 Test Date: 2020-10-23

γ Range: 0 - 180DEG
 γ Interval: 0.5DEG
 Test System: EVERFINE GO-2000A_V1 SYSTEM V2.0.272
 Humidity: 70%
 Test Distance: 8.425m [K=1.0000]
 Remarks:

Photometric Data Table [cd]

G/C	150.0	155.0	160.0	165.0	170.0	175.0	180.0	185.0	190.0	195.0
0.0	268.2	268.2	268.2	268.3	268.6	268.9	270.3	270.2	270.7	270.7
2.5	268.1	268.2	268.7	268.6	268.5	268.8	270.6	270.7	271.1	270.8
5.0	268.6	269.1	268.8	268.6	269.3	269.5	271.1	271.2	271.4	271.7
7.5	268.5	268.9	269.1	269.3	269.5	269.7	272.1	271.5	272.0	272.0
10.0	268.4	269.2	269.2	269.4	269.5	270.1	272.2	272.2	272.6	272.0
12.5	268.5	268.8	268.6	269.3	269.8	270.3	271.9	272.0	272.2	272.3
15.0	267.5	267.9	268.6	269.0	269.1	269.7	272.0	271.9	272.2	271.6
17.5	266.8	267.2	267.6	268.1	268.6	269.3	271.0	271.4	271.4	270.9
20.0	265.5	265.8	266.0	266.7	267.6	268.2	270.0	269.9	270.0	270.0
22.5	263.1	263.8	264.6	265.2	265.8	266.1	268.9	268.7	268.6	268.1
25.0	261.0	261.8	262.5	262.6	264.1	264.2	266.7	266.8	266.5	266.3
27.5	258.1	258.7	259.8	260.5	261.5	261.6	264.7	264.1	264.1	263.8
30.0	254.8	256.0	257.2	257.8	258.5	258.8	261.8	261.6	261.7	260.5
32.5	251.4	251.7	253.6	254.5	255.7	256.1	258.7	258.7	258.4	257.8
35.0	247.7	247.8	250.5	251.9	252.7	252.9	256.2	255.5	255.7	254.5
37.5	244.5	245.2	247.8	249.1	250.1	250.6	253.6	253.2	252.8	251.1
40.0	241.9	242.7	245.4	247.4	248.5	249.0	251.8	251.2	250.5	249.0
42.5	240.0	241.3	245.4	247.7	248.2	248.4	252.0	251.1	250.3	247.7
45.0	240.4	242.7	247.4	249.6	250.8	250.9	253.7	253.2	251.6	248.8
47.5	242.4	244.8	249.9	252.1	253.2	253.2	256.3	255.4	254.0	251.0
50.0	243.6	246.5	252.0	253.9	254.8	254.9	258.1	257.6	256.0	252.5
52.5	245.0	247.9	252.8	254.7	256.5	256.5	259.3	259.0	256.9	254.1
55.0	245.3	248.5	253.5	255.9	257.3	257.0	260.6	259.6	257.9	254.5
57.5	245.3	248.5	253.8	255.9	257.3	257.6	260.8	260.1	258.0	254.5
60.0	244.9	247.9	252.9	255.7	257.3	257.2	260.6	259.5	257.3	254.4
62.5	243.3	246.8	252.2	254.9	256.0	256.1	260.2	258.7	256.8	253.2
65.0	242.0	245.4	251.0	251.6	254.8	255.1	258.3	257.5	255.1	251.5
67.5	240.0	243.3	248.6	249.6	253.1	251.4	256.7	255.3	252.1	249.8
70.0	237.0	240.9	246.4	247.3	250.2	248.9	253.5	253.1	249.0	246.8
72.5	234.3	238.0	243.2	244.5	247.4	246.1	249.2	250.0	246.0	244.0
75.0	230.6	234.3	239.7	241.3	243.9	242.3	245.9	246.2	242.6	240.3
77.5	226.3	230.3	235.9	237.3	239.6	238.2	241.8	242.5	238.6	235.9
80.0	222.0	225.9	231.4	232.8	235.5	233.6	237.2	237.9	234.0	231.6
82.5	216.8	221.0	226.4	227.8	230.4	228.5	232.3	232.5	229.1	226.5
85.0	211.5	215.6	221.2	222.2	224.8	223.2	226.6	227.2	223.5	220.6
87.5	205.5	209.6	214.9	216.2	218.8	217.2	220.6	221.0	217.5	214.9
90.0	198.9	203.3	208.7	209.8	212.1	210.6	214.1	214.6	211.2	208.2
92.5	191.9	196.2	201.2	202.4	204.8	203.5	206.8	207.2	203.7	200.7
95.0	184.2	188.5	193.4	195.0	197.4	196.0	199.1	199.2	196.0	193.1
97.5	175.9	180.5	185.6	186.9	189.1	188.1	191.1	191.2	187.8	184.7
100.0	167.7	172.0	176.8	178.6	180.9	179.6	182.4	182.5	179.2	176.1
102.5	158.7	163.0	168.0	169.7	172.0	170.6	173.6	173.5	170.3	167.1
105.0	149.3	153.8	159.0	160.4	162.5	161.4	163.9	164.1	160.8	157.5
107.5	139.8	144.1	149.1	150.7	152.9	151.8	154.1	154.1	151.0	147.9
110.0	129.7	134.2	139.3	140.8	142.6	141.7	144.2	143.8	140.9	137.6
112.5	119.4	124.0	128.7	130.4	132.3	131.4	133.6	133.3	130.4	127.0
115.0	108.9	113.4	117.9	119.8	121.6	120.8	122.9	122.3	119.7	116.3
117.5	97.24	102.6	107.0	108.9	110.5	109.9	111.9	111.4	108.6	105.2
120.0	86.52	91.74	95.20	97.81	98.61	98.83	100.7	99.32	97.43	93.43
122.5	75.91	80.81	84.11	86.76	87.51	87.63	89.39	88.15	86.31	82.51
125.0	65.63	70.30	73.36	75.71	76.50	76.69	78.21	77.06	75.25	71.64
127.5	56.22	60.35	63.05	65.29	65.95	66.13	67.47	66.29	64.71	61.41
130.0	47.95	51.38	53.69	55.64	56.18	56.30	57.45	56.42	55.08	52.15
132.5	41.77	44.25	45.94	47.39	47.79	47.94	48.77	47.96	46.86	44.60
135.0	36.28	38.29	39.90	41.24	41.54	41.61	42.27	41.61	40.70	38.67
137.5	33.07	34.45	35.29	35.91	36.05	36.06	36.46	35.96	35.47	34.26
140.0	29.87	31.23	32.06	32.65	32.78	32.79	33.10	32.69	32.17	31.05
142.5	26.64	27.94	28.78	29.37	29.51	29.49	29.81	29.36	28.89	27.80
145.0	23.36	24.63	25.44	26.02	26.17	26.17	26.44	26.03	25.52	24.48
147.5	20.06	21.25	22.01	22.64	22.77	22.79	23.06	22.66	22.13	21.18
150.0	16.76	17.88	18.59	19.21	19.36	19.37	19.64	19.23	18.77	17.84
152.5	13.39	14.49	15.15	15.76	15.90	15.95	16.22	15.82	15.37	14.51
155.0	10.10	11.10	11.72	12.32	12.46	12.51	12.79	12.40	12.00	11.20
157.5	6.804	7.761	8.331	8.916	9.039	9.102	9.377	9.011	8.653	7.907
160.0	3.740	4.544	5.052	5.569	5.691	5.780	6.032	5.707	5.405	4.721
162.5	1.635	1.893	2.205	2.571	2.674	2.730	2.926	2.666	2.465	1.985
165.0	1.692	1.631	1.630	1.661	1.657	1.652	1.539	1.503	1.522	1.601
167.5	1.820	1.774	1.679	1.670	1.670	1.657	1.562	1.543	1.666	1.770
170.0	1.712	1.666	1.657	1.684	1.675	1.661	1.598	1.557	1.593	1.630
172.5	1.639	1.652	1.679	1.702	1.693	1.680	1.630	1.580	1.576	1.548
175.0	1.661	1.675	1.698	1.720	1.711	1.693	1.657	1.602	1.598	1.571
177.5	1.666	1.675	1.702	1.716	1.711	1.679	1.689	1.630	1.621	1.598
180.0	1.670	1.679	1.698	1.707	1.702	1.661	1.729	1.675	1.657	1.639

C Range: 0 - 360DEG
 C Interval: 5.0DEG
 Test Speed: HIGH
 Temperature: 25DEG
 Operators: yechihong
 Test Date: 2020-10-23

γ Range: 0 - 180DEG
 γ Interval: 0.5DEG
 Test System: EVERFINE GO-2000A_V1 SYSTEM V2.0.272
 Humidity: 70%
 Test Distance: 8.425m [K=1.0000]
 Remarks:

Photometric Data Table [cd]

G/C	200.0	205.0	210.0	215.0	220.0	225.0	230.0	235.0	240.0	245.0
0.0	270.6	271.0	271.0	271.0	271.5	272.1	271.4	272.3	272.5	272.3
2.5	270.5	271.3	271.6	271.5	272.0	272.1	272.1	272.1	272.2	272.3
5.0	270.9	271.7	271.7	272.1	272.0	271.8	272.2	272.4	272.4	272.3
7.5	271.8	271.7	272.0	271.8	272.2	272.0	271.7	271.8	271.7	271.3
10.0	271.9	272.1	272.1	272.3	271.8	271.3	271.1	270.8	270.6	270.1
12.5	272.0	271.8	271.4	271.5	270.7	270.8	270.0	269.9	269.5	268.3
15.0	271.8	270.9	271.1	270.2	270.3	269.5	268.9	267.7	267.0	265.6
17.5	270.8	270.2	269.9	269.4	268.7	267.6	266.9	265.7	264.7	263.2
20.0	269.7	268.8	268.3	267.3	266.8	265.4	264.1	263.3	261.7	260.0
22.5	268.0	266.8	266.8	265.4	264.7	262.9	261.7	259.5	257.8	255.7
25.0	265.3	264.9	264.3	263.3	261.6	259.8	258.4	256.3	253.5	251.7
27.5	263.0	261.8	261.7	259.9	258.2	256.4	253.9	252.0	247.9	246.6
30.0	259.9	259.1	258.1	256.6	255.2	252.5	248.6	247.4	242.8	241.2
32.5	257.0	255.9	253.7	252.7	248.6	248.1	244.1	242.5	237.4	235.6
35.0	252.3	251.8	248.8	247.8	244.5	243.6	239.0	236.8	231.5	229.1
37.5	248.3	248.2	244.4	243.8	239.7	238.3	233.3	230.7	225.1	222.2
40.0	245.5	244.6	240.8	239.3	234.5	232.9	227.3	224.6	218.2	214.9
42.5	243.7	241.8	237.4	235.2	229.7	227.3	221.0	217.5	210.9	206.8
45.0	243.5	240.5	234.8	231.7	225.1	221.3	214.6	210.6	203.6	199.0
47.5	245.4	241.6	234.0	229.2	221.4	216.1	208.4	203.2	195.6	190.2
50.0	247.0	243.2	234.9	228.8	218.8	211.8	202.5	195.8	187.4	181.3
52.5	248.0	244.4	235.5	229.4	217.8	208.4	196.9	189.0	179.3	172.3
55.0	248.4	244.4	235.9	229.1	217.5	206.9	192.6	182.4	171.1	163.0
57.5	248.0	244.6	235.5	228.6	216.6	205.1	189.8	177.4	163.4	153.7
60.0	247.6	243.6	234.9	227.2	215.3	203.4	187.8	173.9	156.4	144.7
62.5	246.7	242.1	233.5	225.5	213.4	201.4	185.1	170.5	150.4	135.5
65.0	245.1	240.8	231.4	223.6	210.6	198.3	182.1	167.3	145.9	127.5
67.5	243.0	238.4	229.2	221.0	207.7	195.4	179.0	163.6	141.8	120.5
70.0	240.6	235.4	226.5	218.3	204.4	191.9	175.1	159.2	137.3	114.7
72.5	237.4	232.4	223.1	214.9	200.6	187.6	171.0	154.8	132.5	109.5
75.0	233.8	228.4	219.5	210.7	196.6	183.2	166.2	149.9	127.3	103.4
77.5	229.5	224.4	214.9	206.1	192.1	178.2	161.2	144.6	122.0	97.49
80.0	224.9	219.8	210.0	201.4	187.1	172.9	155.8	139.2	116.3	91.40
82.5	219.8	214.2	205.0	195.9	181.6	167.6	150.0	133.0	110.3	85.17
85.0	214.2	208.9	199.1	190.2	175.5	161.5	143.9	126.9	104.0	78.69
87.5	208.2	202.9	193.1	183.7	169.2	155.1	137.6	120.5	97.30	72.04
90.0	201.6	195.9	186.9	177.3	162.7	148.5	130.9	113.5	90.58	65.34
92.5	194.3	188.7	179.3	169.8	155.2	140.9	123.7	106.2	83.48	58.37
95.0	186.7	180.9	171.6	162.0	147.8	133.1	116.1	97.72	76.07	51.25
97.5	178.4	172.8	163.4	153.9	139.6	125.4	108.1	90.10	68.65	44.55
100.0	169.8	164.3	154.8	145.5	131.0	116.8	99.91	82.04	61.12	37.60
102.5	161.0	155.0	146.0	136.3	122.7	108.3	91.65	74.03	53.58	31.58
105.0	151.5	145.8	136.6	127.2	113.6	98.67	83.13	65.91	46.34	25.83
107.5	141.8	136.0	127.0	117.5	104.3	89.55	74.53	57.88	39.44	21.34
110.0	131.8	125.8	117.1	107.6	95.06	80.51	65.91	50.04	33.27	18.43
112.5	121.3	115.4	106.9	96.93	85.02	71.45	57.44	42.80	28.14	16.15
115.0	110.7	104.6	96.35	86.82	75.76	62.56	49.51	36.43	24.67	14.81
117.5	99.90	93.16	85.88	76.61	66.25	54.14	42.42	31.43	21.74	13.43
120.0	89.03	82.54	75.40	66.80	57.38	46.44	36.44	27.76	20.08	12.03
122.5	78.28	71.97	65.32	57.45	49.33	39.99	32.32	25.13	18.38	10.62
125.0	67.63	61.86	55.91	49.06	42.25	35.32	28.65	23.12	16.66	9.188
127.5	57.78	52.69	47.67	42.16	37.14	31.15	26.41	21.11	14.88	7.728
130.0	49.06	45.00	41.22	36.79	32.63	28.69	24.14	19.03	13.07	6.286
132.5	42.34	39.28	35.74	32.68	29.76	26.06	21.80	16.91	11.28	4.838
135.0	36.53	34.36	32.36	29.76	26.96	23.37	19.45	14.79	9.443	3.424
137.5	33.03	31.25	29.29	26.80	24.05	20.69	16.98	12.65	7.632	2.136
140.0	29.87	28.13	26.22	23.84	21.16	17.96	14.48	10.45	5.826	1.405
142.5	26.65	24.96	23.16	20.86	18.30	15.24	12.02	8.263	4.065	1.390
145.0	23.41	21.81	20.06	17.86	15.46	12.53	9.568	6.123	2.430	1.417
147.5	20.17	18.61	16.95	14.86	12.61	9.879	7.127	4.078	1.516	1.453
150.0	16.88	15.41	13.89	11.90	9.825	7.298	4.793	2.237	1.494	1.489
152.5	13.61	12.24	10.82	9.009	7.092	4.831	2.698	1.431	1.499	1.556
155.0	10.37	9.100	7.827	6.191	4.510	2.621	1.498	1.439	1.589	1.766
157.5	7.158	6.054	4.934	3.515	2.210	1.495	1.476	1.458	1.462	1.494
160.0	4.130	3.186	2.326	1.608	1.498	1.498	1.498	1.489	1.490	1.668
162.5	1.692	1.504	1.489	1.512	1.503	1.512	1.512	1.516	1.526	1.535
165.0	1.608	1.610	1.544	1.516	1.512	1.521	1.539	1.544	1.562	1.566
167.5	1.766	1.774	1.756	1.598	1.544	1.557	1.578	1.571	1.580	1.593
170.0	1.665	1.667	1.639	1.571	1.571	1.585	1.661	1.603	1.607	1.603
172.5	1.544	1.557	1.571	1.593	1.598	1.612	1.616	1.621	1.625	1.625
175.0	1.562	1.589	1.593	1.607	1.616	1.625	1.634	1.634	1.639	1.630
177.5	1.585	1.598	1.612	1.616	1.625	1.634	1.648	1.639	1.639	1.639
180.0	1.625	1.634	1.639	1.643	1.648	1.652	1.657	1.657	1.652	1.648

C Range: 0 - 360DEG
 C Interval: 5.0DEG
 Test Speed: HIGH
 Temperature: 25DEG
 Operators: yechihong
 Test Date: 2020-10-23

γ Range: 0 - 180DEG
 γ Interval: 0.5DEG
 Test System: EVERFINE GO-2000A_V1 SYSTEM V2.0.272
 Humidity: 70%
 Test Distance: 8.425m [K=1.0000]
 Remarks:

Photometric Data Table [cd]

G/C	250.0	255.0	260.0	265.0	270.0	275.0	280.0	285.0	290.0	295.0
0.0	272.3	271.8	270.8	270.4	269.8	269.8	269.3	268.7	268.2	268.4
2.5	272.1	271.6	271.4	270.7	270.3	269.9	269.4	268.1	268.1	268.5
5.0	272.1	271.2	270.8	269.7	269.6	269.1	268.6	268.4	268.2	267.7
7.5	271.0	270.4	269.1	269.0	268.6	268.4	268.1	267.3	267.9	267.8
10.0	269.2	268.3	268.1	267.3	267.5	267.0	266.7	266.7	266.9	267.0
12.5	267.6	266.3	265.7	265.3	265.2	265.3	265.1	265.2	265.9	265.8
15.0	264.6	263.4	262.7	262.6	262.5	262.9	263.1	262.9	264.5	264.7
17.5	261.4	260.0	259.6	259.0	259.5	259.6	260.1	260.8	261.9	262.8
20.0	257.8	256.2	255.7	255.3	255.5	256.2	257.2	258.2	259.5	260.5
22.5	252.4	251.4	249.4	250.7	249.5	252.1	252.1	254.4	256.2	257.8
25.0	246.9	246.8	244.4	245.1	244.7	246.9	247.3	250.7	251.9	254.4
27.5	241.9	241.4	238.5	239.7	239.4	242.0	242.4	246.2	247.4	251.2
30.0	235.9	235.6	232.3	233.9	233.3	236.6	237.2	241.4	242.3	247.2
32.5	229.8	228.8	225.7	226.8	226.8	230.3	231.4	236.0	237.5	242.0
35.0	222.9	221.8	218.5	219.4	219.9	223.8	224.8	229.7	232.0	236.8
37.5	215.7	213.9	210.8	211.4	212.5	216.0	218.0	223.3	225.4	230.8
40.0	207.9	206.0	202.7	203.6	204.5	208.4	211.1	216.3	219.3	224.6
42.5	199.6	197.3	194.1	195.1	195.8	200.6	203.2	208.6	212.1	218.0
45.0	191.0	188.1	184.9	185.4	186.9	191.4	194.8	200.9	204.7	210.6
47.5	181.9	178.8	175.3	176.2	177.8	182.5	186.3	192.4	196.9	204.0
50.0	172.2	168.7	165.8	166.5	168.1	173.2	177.8	183.8	188.9	196.9
52.5	162.8	158.6	155.0	155.8	157.9	163.4	168.2	175.4	181.4	189.7
55.0	152.3	147.9	144.3	145.0	147.6	153.6	158.6	166.4	173.4	184.0
57.5	141.9	136.9	133.5	133.8	137.1	143.2	149.4	157.9	166.3	178.6
60.0	131.6	126.0	122.0	122.3	125.7	132.9	139.7	149.4	159.8	174.7
62.5	120.6	114.4	109.7	110.4	114.5	122.2	129.7	141.3	154.3	171.7
65.0	110.1	102.6	98.22	98.09	103.3	111.4	120.5	134.8	150.3	168.3
67.5	99.71	90.79	86.48	86.68	91.88	100.8	112.9	129.5	146.4	164.7
70.0	89.50	79.25	74.10	74.01	80.63	91.26	105.2	124.2	141.8	160.1
72.5	80.42	68.18	62.22	62.27	69.96	81.71	98.93	119.3	137.4	155.9
75.0	71.94	57.50	50.80	51.76	59.40	73.93	93.34	114.4	132.2	150.8
77.5	65.01	47.48	39.69	39.95	49.83	67.59	87.78	108.2	126.7	145.4
80.0	58.98	38.85	29.16	29.30	41.29	61.53	81.80	101.6	121.1	140.0
82.5	52.57	31.29	19.76	20.76	34.51	55.08	75.43	95.75	114.7	133.9
85.0	46.33	25.61	11.78	13.33	28.78	48.65	69.00	89.02	108.5	127.5
87.5	40.05	19.92	6.020	7.983	23.08	42.65	62.30	82.39	101.8	121.1
90.0	33.71	14.86	2.921	4.411	17.53	36.41	55.39	75.68	94.75	114.3
92.5	27.77	10.36	1.338	2.200	12.72	30.16	48.89	68.45	87.10	106.3
95.0	22.19	6.910	0.9412	1.331	8.925	24.39	42.57	60.72	79.05	96.92
97.5	17.21	4.867	0.7288	1.021	6.220	19.19	35.36	53.24	70.71	87.50
100.0	13.17	3.889	0.6880	0.7116	4.617	14.50	28.00	44.99	62.31	78.31
102.5	10.50	3.289	0.6745	0.6564	4.038	11.17	22.40	37.59	54.23	70.63
105.0	8.850	2.660	0.6654	0.6609	3.408	9.214	18.17	31.33	46.41	61.95
107.5	7.935	2.007	0.6792	0.6878	2.599	7.989	14.20	24.58	38.76	52.78
110.0	7.001	1.423	0.7017	0.7107	1.870	6.760	11.84	19.49	30.91	44.45
112.5	6.060	0.8755	0.7243	0.7469	1.265	5.665	10.55	16.11	24.64	36.02
115.0	5.099	0.8374	0.7605	0.7651	0.9142	4.654	9.230	13.95	20.04	28.45
117.5	4.152	0.8555	0.8058	0.8146	0.8785	3.768	7.968	12.52	16.96	23.50
120.0	3.164	0.8827	0.8422	0.8509	0.9100	2.886	6.770	11.06	15.34	20.05
122.5	2.224	0.9189	0.8830	0.8963	0.9416	2.095	5.681	9.669	13.72	17.47
125.0	1.386	0.9596	0.9326	0.9372	0.9690	1.431	4.622	8.326	12.12	15.84
127.5	1.105	1.010	0.9689	0.9867	1.010	1.110	3.630	7.045	10.58	14.07
130.0	1.145	1.041	1.019	1.023	1.041	1.091	2.700	5.870	9.136	12.37
132.5	1.195	1.087	1.059	1.064	1.082	1.114	1.841	4.670	7.709	10.68
135.0	1.241	1.113	1.096	1.100	1.114	1.141	1.303	3.551	6.327	9.111
137.5	1.290	1.150	1.158	1.158	1.327	1.177	1.195	2.519	5.043	7.574
140.0	1.331	1.313	1.322	1.322	1.322	1.317	1.326	1.672	3.784	6.106
142.5	1.412	1.385	1.372	1.372	1.427	1.394	1.363	1.403	2.752	4.682
145.0	1.602	1.421	1.408	1.412	1.512	1.497	1.395	1.399	1.821	3.493
147.5	1.449	1.453	1.449	1.439	1.440	1.435	1.440	1.439	1.458	2.336
150.0	1.517	1.494	1.480	1.476	1.476	1.480	1.481	1.489	1.476	1.585
152.5	1.566	1.593	1.598	1.674	1.842	1.611	1.571	1.521	1.521	1.516
155.0	1.598	1.630	1.643	1.661	1.657	1.860	2.074	1.811	1.598	1.566
157.5	1.639	1.675	1.689	1.697	1.707	1.745	1.870	1.721	1.644	1.630
160.0	1.639	1.716	1.738	1.747	1.747	1.753	1.756	1.734	1.720	1.698
162.5	1.598	1.743	1.775	1.793	2.017	2.015	1.775	1.761	1.739	1.729
165.0	1.584	1.707	1.793	1.820	1.829	1.815	1.811	1.793	1.788	1.783
167.5	1.607	1.661	1.752	1.842	1.856	1.856	1.842	1.838	1.897	1.992
170.0	1.621	1.643	1.707	1.838	1.861	1.901	1.990	2.086	1.983	1.897
172.5	1.634	1.643	1.670	1.802	1.851	1.870	1.865	1.856	1.861	1.856
175.0	1.639	1.648	1.652	1.757	1.842	1.861	1.861	1.856	1.856	1.856
177.5	1.643	1.652	1.648	1.720	1.838	1.856	1.856	1.861	1.865	1.856
180.0	1.652	1.661	1.661	1.707	1.833	1.874	1.879	1.879	1.879	1.883

C Range: 0 - 360DEG
 C Interval: 5.0DEG
 Test Speed: HIGH
 Temperature: 25DEG
 Operators: yechihong
 Test Date: 2020-10-23

γ Range: 0 - 180DEG
 γ Interval: 0.5DEG
 Test System: EVERFINE GO-2000A_V1 SYSTEM V2.0.272
 Humidity: 70%
 Test Distance: 8.425m [K=1.0000]
 Remarks:

Photometric Data Table [cd]

G/C	300.0	305.0	310.0	315.0	320.0	325.0	330.0	335.0	340.0	345.0
0.0	268.6	268.5	268.4	268.6	268.4	268.2	268.2	268.2	268.2	268.3
2.5	268.4	268.9	268.8	268.7	268.3	268.8	268.5	268.6	269.0	268.5
5.0	268.4	269.0	268.6	268.6	269.0	269.2	268.8	268.6	269.3	269.4
7.5	268.2	268.5	268.9	268.9	269.2	269.3	269.8	269.5	269.4	269.8
10.0	267.3	268.5	268.7	268.7	268.9	269.8	269.9	270.1	270.0	270.5
12.5	266.8	267.7	268.0	268.8	269.2	269.4	269.8	270.3	270.1	270.8
15.0	265.7	266.6	267.7	268.5	268.7	269.1	269.8	270.5	269.9	270.5
17.5	263.8	265.5	266.5	267.2	268.0	268.6	268.9	269.9	269.9	270.3
20.0	262.2	263.6	264.8	266.0	267.1	267.2	268.2	268.7	268.6	269.3
22.5	259.6	261.5	263.1	264.1	265.1	265.9	266.8	267.4	267.3	267.6
25.0	256.8	258.8	260.3	261.5	262.9	263.8	264.7	265.2	265.9	265.9
27.5	252.2	255.2	257.5	258.9	260.3	261.0	262.6	263.0	263.5	263.5
30.0	247.5	251.9	252.9	255.6	257.0	258.4	259.8	260.6	261.2	261.1
32.5	243.3	247.7	248.3	251.9	253.1	255.0	256.6	257.4	258.2	258.6
35.0	238.4	242.9	244.2	248.1	248.3	251.5	253.0	254.8	255.3	256.0
37.5	233.0	238.2	239.4	243.7	244.5	248.5	248.9	251.9	253.4	254.2
40.0	227.4	232.7	234.8	239.5	241.0	245.2	246.7	250.0	251.8	253.2
42.5	221.3	227.4	230.2	235.9	237.8	243.3	245.4	250.0	252.1	253.7
45.0	215.2	222.0	225.7	232.2	235.9	242.7	245.9	251.3	254.3	256.5
47.5	209.0	216.9	222.2	230.6	235.5	243.7	247.9	253.7	256.1	258.5
50.0	203.0	212.8	220.0	229.9	236.4	245.2	249.1	255.2	258.0	260.1
52.5	197.8	209.6	219.0	230.3	237.0	245.8	249.8	255.7	259.0	261.5
55.0	193.8	207.8	218.7	230.0	237.1	245.9	250.0	256.1	259.3	261.8
57.5	191.1	206.5	217.5	229.0	236.5	245.7	249.5	256.0	259.4	261.6
60.0	189.0	204.4	215.9	228.0	235.7	244.4	249.1	254.7	258.6	261.1
62.5	186.1	202.0	214.0	226.1	234.0	243.2	247.6	253.8	257.6	259.4
65.0	183.1	199.5	211.2	223.8	232.0	241.3	245.6	252.0	255.9	257.9
67.5	179.8	196.2	208.5	221.4	229.4	238.6	243.5	249.7	252.4	255.4
70.0	175.7	192.4	204.9	218.3	226.2	235.6	240.6	247.3	248.9	252.2
72.5	171.4	188.4	201.0	214.4	222.7	232.2	237.0	243.6	245.4	249.1
75.0	166.7	183.6	196.7	210.2	218.6	227.8	233.1	239.7	241.4	245.0
77.5	161.6	178.7	191.9	205.6	214.0	223.6	228.6	235.3	237.2	240.7
80.0	156.4	173.3	186.8	200.4	209.0	218.5	223.6	229.8	232.2	235.8
82.5	150.4	167.4	181.2	194.7	203.5	212.9	218.2	224.5	226.8	230.1
85.0	144.1	161.6	175.2	188.4	197.6	207.1	212.1	218.5	221.0	224.3
87.5	137.5	154.7	168.7	182.2	191.2	200.4	205.9	212.1	214.4	217.8
90.0	130.6	147.8	161.8	175.2	184.1	193.4	198.9	205.1	207.6	210.7
92.5	122.6	139.7	153.6	166.9	176.4	185.7	191.1	197.3	199.9	203.2
95.0	114.5	131.3	145.5	158.9	168.1	177.2	183.1	189.3	191.8	195.0
97.5	104.8	122.2	136.8	150.1	159.5	168.9	174.7	181.0	183.4	186.4
100.0	93.71	109.8	125.3	140.6	150.4	159.8	165.8	171.8	174.4	177.6
102.5	86.13	99.64	112.7	127.0	140.2	150.2	156.5	162.7	165.2	168.0
105.0	78.03	92.44	104.8	115.3	126.7	139.9	146.6	152.8	155.5	158.4
107.5	68.69	83.19	96.78	107.3	114.3	127.2	136.4	142.4	145.3	148.3
110.0	58.40	72.93	86.87	97.34	105.4	113.6	124.9	132.0	134.8	137.5
112.5	48.74	61.63	75.20	87.34	96.34	102.0	112.2	120.8	124.0	126.7
115.0	40.28	51.42	63.90	75.69	86.07	92.11	98.95	109.5	112.8	115.5
117.5	32.33	43.09	53.62	63.70	75.23	81.80	86.95	96.33	101.5	103.7
120.0	26.17	34.80	44.69	53.35	63.53	71.47	76.11	83.38	89.96	91.74
122.5	22.20	28.17	36.66	44.52	52.53	61.28	65.58	70.64	78.49	80.26
125.0	19.32	23.68	29.72	36.55	43.33	50.85	55.84	59.02	67.33	69.02
127.5	17.40	20.40	25.06	30.17	36.04	41.47	47.20	48.81	56.22	58.43
130.0	15.65	18.47	21.30	25.19	30.18	34.43	39.39	40.62	46.03	48.83
132.5	13.78	16.57	19.15	22.04	25.31	29.40	32.97	34.66	37.80	41.02
135.0	11.95	14.63	17.03	19.47	22.56	25.45	28.20	29.75	31.36	35.10
137.5	10.19	12.66	15.13	17.22	19.78	22.42	25.35	26.99	26.92	31.06
140.0	8.491	10.75	13.01	14.95	17.20	19.43	22.04	23.65	23.63	27.88
142.5	6.849	8.877	10.98	12.85	14.79	16.60	18.95	20.87	21.31	24.69
145.0	5.267	7.098	8.982	10.66	12.45	14.05	15.93	18.05	18.90	21.46
147.5	3.931	5.389	7.046	8.551	10.10	11.54	13.01	14.77	16.07	18.13
150.0	2.616	3.878	5.197	6.493	7.831	9.059	10.41	11.69	13.01	14.56
152.5	1.674	2.489	3.572	4.561	5.725	6.691	7.835	8.789	10.06	11.15
155.0	1.566	1.639	2.097	2.821	3.739	4.507	5.376	6.104	7.017	7.628
157.5	1.598	1.580	1.521	1.623	2.042	2.571	3.174	3.632	4.201	4.002
160.0	1.662	1.634	1.525	1.476	1.494	1.555	1.679	1.781	1.946	1.930
162.5	1.711	1.666	1.557	1.494	1.503	1.521	1.530	1.526	1.526	1.503
165.0	1.795	1.815	1.667	1.574	1.526	1.535	1.548	1.539	1.544	1.516
167.5	2.051	1.978	1.851	1.707	1.576	1.562	1.575	1.584	1.575	1.557
170.0	1.900	1.853	1.706	1.612	1.607	1.589	1.598	1.620	1.621	1.589
172.5	1.842	1.779	1.670	1.625	1.621	1.634	1.621	1.639	1.652	1.621
175.0	1.847	1.765	1.661	1.630	1.625	1.639	1.657	1.652	1.670	1.652
177.5	1.856	1.774	1.666	1.634	1.639	1.652	1.661	1.684	1.684	1.679
180.0	1.883	1.797	1.689	1.657	1.652	1.657	1.670	1.679	1.702	1.707

C Range: 0 - 360DEG
 C Interval: 5.0DEG
 Test Speed: HIGH
 Temperature: 25DEG
 Operators: yechihong
 Test Date: 2020-10-23

γ Range: 0 - 180DEG
 γ Interval: 0.5DEG
 Test System: EVERFINE GO-2000A_V1 SYSTEM V2.0.272
 Humidity: 70%
 Test Distance: 8.425m [K=1.0000]
 Remarks:

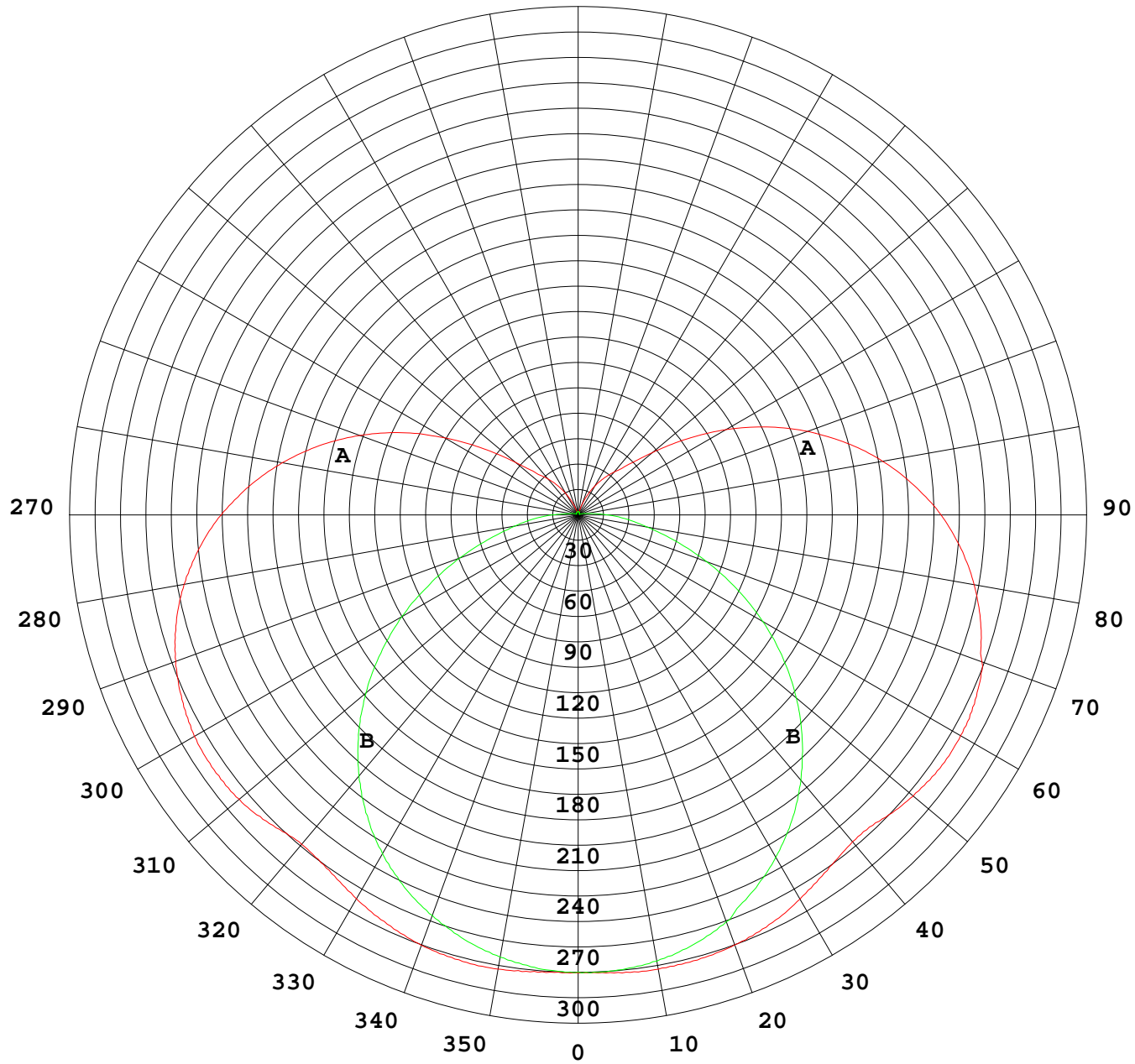
Photometric Data Table [cd]

G/C	350.0	355.0
0.0	268.6	268.9
2.5	268.9	269.3
5.0	269.4	269.3
7.5	270.4	270.2
10.0	270.7	270.6
12.5	270.9	270.9
15.0	270.9	271.0
17.5	270.1	270.2
20.0	269.6	269.3
22.5	268.3	268.0
25.0	266.3	265.9
27.5	264.3	263.9
30.0	261.6	261.5
32.5	259.1	258.7
35.0	256.7	256.5
37.5	254.4	254.4
40.0	253.8	253.6
42.5	254.9	254.7
45.0	257.1	256.7
47.5	259.7	259.2
50.0	261.1	260.5
52.5	262.0	261.4
55.0	262.7	262.1
57.5	262.3	261.6
60.0	261.8	261.1
62.5	260.6	260.0
65.0	258.6	257.9
67.5	256.7	255.7
70.0	253.3	252.9
72.5	248.6	249.2
75.0	244.7	245.5
77.5	240.3	240.9
80.0	235.5	235.7
82.5	229.9	230.5
85.0	223.8	224.3
87.5	217.4	217.6
90.0	210.2	210.9
92.5	202.5	202.8
95.0	194.5	195.0
97.5	185.9	186.3
100.0	177.1	177.3
102.5	167.8	167.9
105.0	158.0	157.9
107.5	147.9	147.8
110.0	137.3	137.2
112.5	126.5	126.0
115.0	115.3	114.9
117.5	103.8	103.1
120.0	92.33	91.05
122.5	80.90	79.64
125.0	69.64	68.48
127.5	59.02	57.87
130.0	49.45	48.47
132.5	41.60	40.85
135.0	35.78	35.01
137.5	31.60	31.29
140.0	28.34	28.07
142.5	24.98	24.81
145.0	21.60	21.52
147.5	18.26	18.13
150.0	14.91	14.69
152.5	11.61	11.29
155.0	8.284	7.945
157.5	5.052	4.726
160.0	2.210	1.987
162.5	1.458	1.426
165.0	1.481	1.444
167.5	1.512	1.485
170.0	1.553	1.516
172.5	1.589	1.548
175.0	1.621	1.584
177.5	1.652	1.607
180.0	1.698	1.657

C Range: 0 - 360DEG
 C Interval: 5.0DEG
 Test Speed: HIGH
 Temperature: 25DEG
 Operators: yechihong
 Test Date: 2020-10-23

γ Range: 0 - 180DEG
 γ Interval: 0.5DEG
 Test System: EVERFINE GO-2000A_V1 SYSTEM V2.0.272
 Humidity: 70%
 Test Distance: 8.425m [K=1.0000]
 Remarks:

I(cd)



1000 lm

$\kappa = 1$



F = 5000 lm
K = 0.7
Hcc = 0.0 m
Hfc = 0.0 m
Eave = 100 lx

	Pcc	Pw	Pfc
—————	70	50	30
—————	50	30	20

