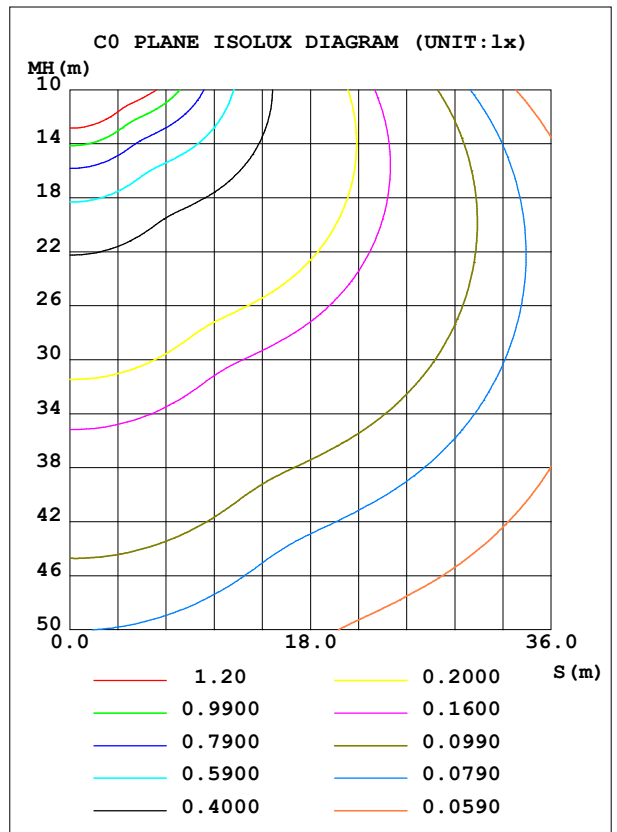
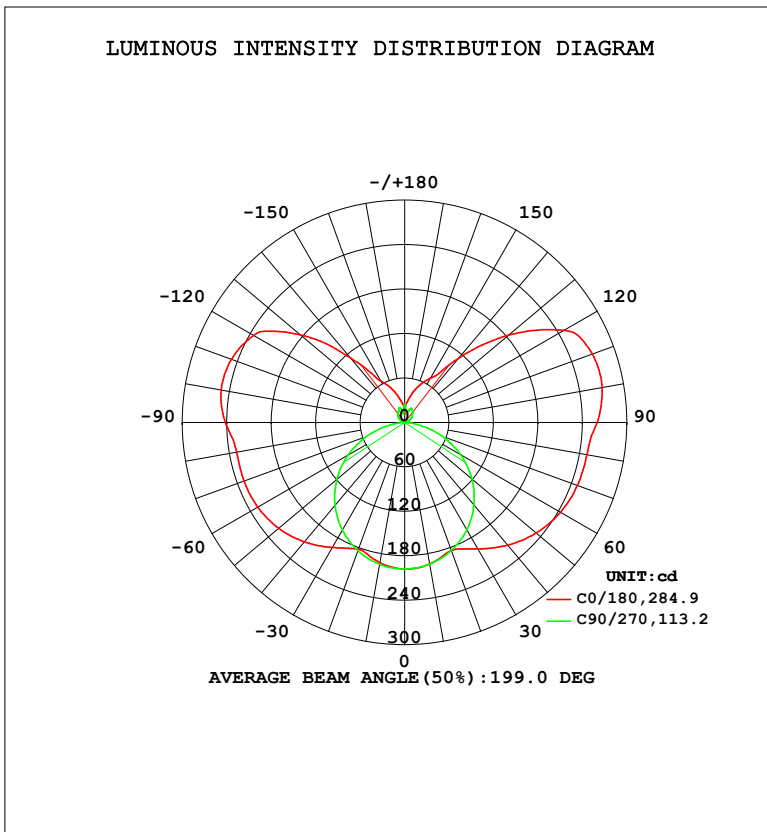


LUMINAIRE PHOTOMETRIC TEST REPORT

Test:U:120.1V I:0.2395A P:28.52W PF:0.9919 Freq:60.01Hz Lamp Flux:1741.55x1 lm		
NAME: VN27-36-30S-952C5-MVTD-BK 5000K	TYPE:	WEIGHT:
SPEC.:	DIM.:	SERIAL No.:
MFR.: FOSHAN LEDKEY LIGHTING CO.,LTD.	SUR.:	Shielding Angle:

DATA OF LAMP		PHOTOMETRIC DATA				Eff: 61.05 lm/W
MODEL		Imax (cd)	271.8	S/MH (C0/180)		1.61
NOMINAL POWER (W)		LOR (%)	100.0	S/MH (C90/270)		1.26
RATED VOLTAGE (V)	120	TOTAL FLUX (lm)	1741.6	$\eta$ UP, DN (C0-180)		20.4, 29.8
NOMINAL FLUX (lm)	1741.55	CIE CLASS	DIFFUSE	$\eta$ UP, DN (C180-360)		20.1, 29.6
LAMPS INSIDE	1	$\eta$ up (%)	40.6	CIBSE SHR NOM		1.50
TEST VOLTAGE (V)	120	$\eta$ down (%)	59.4	CIBSE SHR MAX		1.55



C Range: 0 - 360DEG  
 C Interval: 22.5DEG  
 Test Speed: HIGH  
 Temperature: 25.2 °C  
 Operators: Dano  
 Test Date: 2023-05-30

$\gamma$  Range: 0 - 180DEG  
 $\gamma$  Interval: 1.0DEG  
 Test System: EVERFINE GO-R5000\_V2 SYSTEM V2.00.459  
 Humidity: 55.3%  
 Test Distance: 2.900m [K=0.8810]  
 Remarks:

## ZONAL FLUX DIAGRAM

ZONAL FLUX DIAGRAM:

$\gamma$	C0	C45	C90	C135	C180	C225	C270	C315	$\gamma$	$\Phi$ zone	$\Phi$ total	%lum,lamp
10	194.2	194.5	194.2	193.0	192.2	193.1	194.5	194.5	0- 10	18.69	18.69	1.07,1.07
20	184.1	183.2	184.1	180.4	182.3	180.8	184.4	183.5	10- 20	53.28	71.97	4.13,4.13
30	197.1	171.7	167.7	170.2	194.9	171.4	168.0	171.4	20- 30	82.86	154.8	8.89,8.89
40	216.3	174.2	145.6	171.9	210.6	172.9	146.2	174.3	30- 40	110.6	265.4	15.2,15.2
50	232.0	177.8	118.5	174.0	222.2	173.6	119.5	179.2	40- 50	134.5	399.9	23,23
60	242.9	177.9	87.38	172.5	229.0	170.2	88.38	181.3	50- 60	152.4	552.3	31.7,31.7
70	248.2	173.1	52.92	166.5	230.7	162.2	53.92	178.6	60- 70	161.6	714.0	41,41
80	249.9	165.9	18.64	158.7	230.5	152.3	19.54	172.7	70- 80	161.6	875.6	50.3,50.3
90	259.9	168.8	0.3326	164.2	241.9	155.2	0.3682	176.3	80- 90	159.6	1035	59.4,59.4
100	270.6	179.9	1.979	173.2	251.3	163.9	1.363	187.5	90-100	168.1	1203	69.1,69.1
110	269.7	182.8	4.944	173.3	248.9	164.7	3.824	189.6	100-110	166.5	1370	78.7,78.7
120	248.7	145.4	9.016	144.7	235.2	141.0	6.944	144.3	110-120	143.8	1514	86.9,86.9
130	183.5	94.13	13.18	94.05	184.3	92.85	11.06	95.51	120-130	104.0	1618	92.9,92.9
140	113.2	55.86	16.88	59.17	113.4	56.36	14.83	62.58	130-140	61.79	1679	96.4,96.4
150	68.80	46.91	20.48	46.69	64.56	48.51	16.77	44.09	140-150	33.29	1713	98.3,98.3
160	50.57	37.39	18.21	34.88	46.74	40.33	21.22	31.81	150-160	18.74	1731	99.4,99.4
170	31.99	13.95	15.85	26.19	29.65	28.21	12.62	15.34	160-170	8.205	1740	99.9,99.9
180	19.94	26.60	24.55	24.94	13.66	22.65	24.54	24.57	170-180	1.951	1742	100,100
DEG	LUMINOUS INTENSITY:cd									UNIT:lm		

Conical surface Flux(90deg): 330 lm

%lum = 18.9%

%lamp = 18.9%

Conical surface Flux(120deg): 552.33 lm

%lum = 31.7%

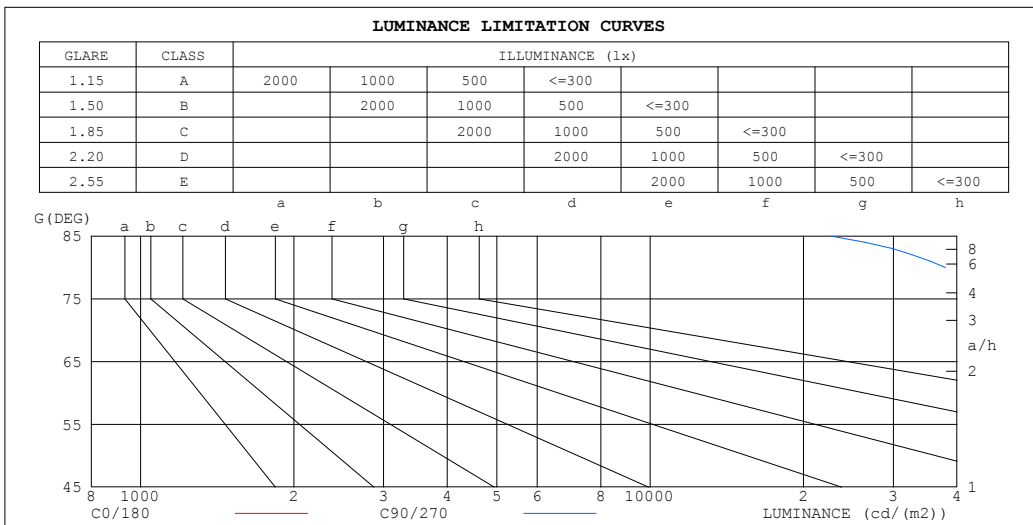
%lamp = 31.7%

C Range: 0 - 360DEG  
C Interval: 22.5DEG  
Test Speed: HIGH  
Temperature:25.2℃  
Operators:Dano  
Test Date:2023-05-30

$\gamma$  Range: 0 - 180DEG  
 $\gamma$  Interval: 1.0DEG  
Test System:EVERFINE GO-R5000\_V2 SYSTEM V2.00.459  
Humidity:55.3%  
Test Distance:2.900m [K=0.8810]  
Remarks:

LUMINANCE LIMITATION CURVES

Test:U:120.1V I:0.2395A P:28.52W PF:0.9919 Freq:60.01Hz Lamp Flux:1741.55x1 lm		
NAME: VN27-36-30S-952C5-MVTD-BK 5000K	TYPE:	WEIGHT:
SPEC.:	DIM.:	SERIAL No.:
MFR.: FOSHAN LEDKEY LIGHTING CO.,LTD.	SUR.:	Shielding Angle:



LUMINANCE cd/(m2)		
G (DEG)	C0/180	C90/270
85	1022838	22718
80	509179	37992
75	340623	48174
70	256714	54760
65	206009	58979
60	171837	61855
55	146836	63843
50	127701	65255
45	112403	66391

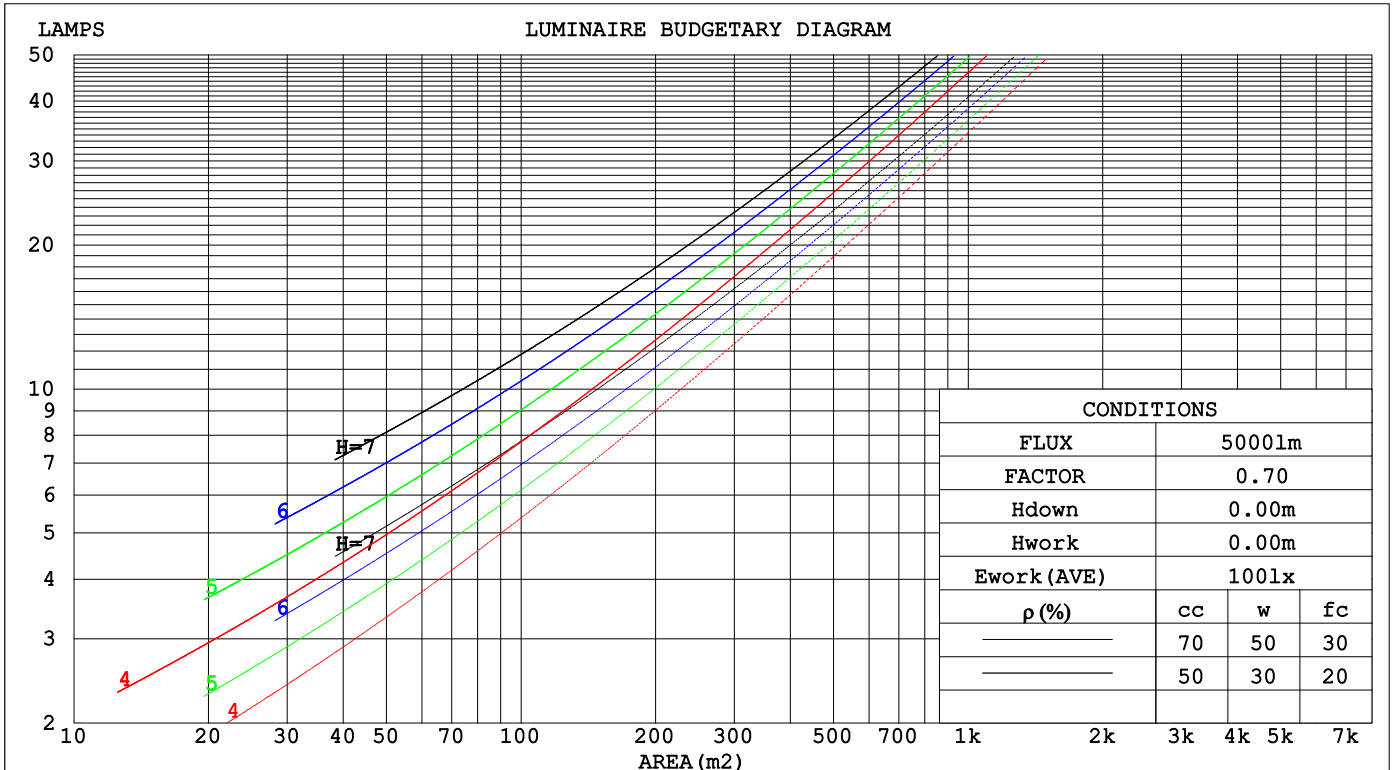
C Range: 0 - 360DEG  
 C Interval: 22.5DEG  
 Test Speed: HIGH  
 Temperature: 25.2°C  
 Operators: Dano  
 Test Date: 2023-05-30

γ Range: 0 - 180DEG  
 γ Interval: 1.0DEG  
 Test System: EVERFINE GO-R5000\_V2 SYSTEM V2.00.459  
 Humidity: 55.3%  
 Test Distance: 2.900m [K=0.8810]  
 Remarks:

**CU AND LUMINAIRE BUDGETARY ESTIMATE DIAGRAM**

Test:U:120.1V I:0.2395A P:28.52W PF:0.9919 Freq:60.01Hz Lamp Flux:1741.55x1 lm		
NAME: VN27-36-30S-952C5-MVTD-BK 5000K	TYPE:	WEIGHT:
SPEC.:	DIM.:	SERIAL No.:
MFR.: FOSHAN LEDKEY LIGHTING CO.,LTD.	SUR.:	Shielding Angle:

ρcc	80%			70%			50%			30%			10%			0
ρw	50%	30%	10%	50%	30%	10%	50%	30%	10%	50%	30%	10%	50%	30%	10%	0
ρfc	20%			20%			20%			20%			20%			0
RCR	RCR:Room Cavity Ratio						Coefficients of Utilization(CU)									
0.0	1.09	1.09	1.09	1.02	1.02	1.02	.89	.89	.89	.76	.76	.76	.65	.65	.65	.59
1.0	.89	.84	.78	.83	.78	.73	.71	.67	.64	.60	.57	.55	.50	.48	.46	.41
2.0	.76	.68	.61	.70	.63	.57	.60	.54	.49	.51	.46	.42	.42	.39	.36	.31
3.0	.65	.56	.49	.60	.52	.46	.52	.45	.40	.43	.38	.34	.36	.32	.29	.24
4.0	.57	.47	.40	.53	.44	.38	.45	.38	.33	.38	.33	.28	.31	.27	.24	.20
5.0	.50	.41	.34	.47	.38	.32	.40	.33	.28	.34	.28	.24	.28	.23	.20	.17
6.0	.45	.35	.29	.42	.33	.27	.36	.29	.24	.30	.25	.20	.25	.21	.17	.14
7.0	.40	.31	.25	.37	.29	.23	.32	.25	.21	.27	.22	.18	.23	.18	.15	.12
8.0	.36	.28	.22	.34	.26	.21	.29	.23	.18	.25	.19	.16	.21	.16	.13	.11
9.0	.33	.25	.19	.31	.23	.18	.27	.20	.16	.23	.18	.14	.19	.15	.12	.09
10.0	.30	.22	.17	.28	.21	.16	.25	.18	.14	.21	.16	.12	.18	.13	.10	.08



C Range: 0 - 360DEG  
 C Interval: 22.5DEG  
 Test Speed: HIGH  
 Temperature:25.2°C  
 Operators:Dano  
 Test Date:2023-05-30

γ Range: 0 - 180DEG  
 γ Interval: 1.0DEG  
 Test System:EVERFINE GO-R5000\_V2 SYSTEM V2.00.459  
 Humidity:55.3%  
 Test Distance:2.900m [K=0.8810]  
 Remarks:

**WEC AND CCEC**

Test:U:120.1V I:0.2395A P:28.52W PF:0.9919 Freq:60.01Hz Lamp Flux:1741.55x1 lm		
NAME: VN27-36-30S-952C5-MVTD-BK 5000K	TYPE:	WEIGHT:
SPEC.:	DIM.:	SERIAL No.:
MFR.: FOSHAN LEDKEY LIGHTING CO.,LTD.	SUR.:	Shielding Angle:

ρ <sub>cc</sub>	80%			70%			50%			30%			10%			0
ρ <sub>w</sub>	50%	30%	10%	50%	30%	10%	50%	30%	10%	50%	30%	10%	50%	30%	10%	0
ρ <sub>fc</sub>	20%			20%			20%			20%			20%			0
RCR	RCR:Room Cavity Ratio						Wall Exitance Coefficients(WEC)									
0.0																
1.0	.405	.230	.073	.385	.220	.070	.348	.200	.064	.315	.182	.058	.284	.164	.053	
2.0	.340	.187	.057	.323	.178	.055	.289	.161	.050	.258	.145	.045	.230	.130	.041	
3.0	.298	.159	.048	.282	.151	.045	.251	.136	.041	.223	.122	.038	.197	.109	.034	
4.0	.266	.138	.041	.251	.132	.039	.223	.118	.035	.197	.106	.032	.173	.094	.029	
5.0	.240	.123	.035	.227	.116	.034	.201	.105	.031	.177	.094	.028	.155	.083	.025	
6.0	.219	.110	.031	.207	.105	.030	.183	.094	.027	.161	.084	.025	.141	.074	.022	
7.0	.202	.100	.028	.190	.095	.027	.168	.085	.025	.148	.076	.022	.129	.067	.020	
8.0	.187	.091	.026	.176	.087	.024	.156	.078	.022	.137	.069	.020	.119	.061	.018	
9.0	.174	.084	.023	.164	.080	.022	.145	.072	.020	.127	.064	.018	.111	.056	.016	
10.0	.162	.078	.022	.153	.074	.021	.135	.066	.019	.119	.059	.017	.103	.052	.015	

ρ <sub>cc</sub>	80%			70%			50%			30%			10%			0
ρ <sub>w</sub>	50%	30%	10%	50%	30%	10%	50%	30%	10%	50%	30%	10%	50%	30%	10%	0
ρ <sub>fc</sub>	20%			20%			20%			20%			20%			0
RCR	RCR:Room Cavity Ratio						Ceiling Cavity Exitance Coefficients(CCEC)									
0.0	.500	.500	.500	.427	.427	.427	.291	.291	.291	.167	.167	.167	.054	.054	.054	
1.0	.498	.467	.438	.427	.401	.377	.292	.276	.261	.168	.160	.152	.054	.051	.049	
2.0	.492	.445	.406	.422	.383	.351	.289	.265	.245	.167	.154	.143	.053	.050	.047	
3.0	.485	.430	.386	.416	.371	.334	.286	.258	.235	.165	.150	.138	.053	.049	.045	
4.0	.478	.418	.373	.410	.361	.324	.282	.252	.228	.163	.147	.135	.052	.048	.044	
5.0	.470	.409	.364	.404	.354	.316	.278	.247	.223	.161	.145	.132	.052	.047	.044	
6.0	.463	.401	.357	.398	.348	.311	.275	.243	.220	.159	.143	.131	.051	.047	.043	
7.0	.456	.395	.352	.392	.342	.307	.271	.240	.218	.157	.141	.130	.051	.046	.043	
8.0	.450	.390	.349	.387	.338	.304	.268	.237	.216	.156	.140	.129	.050	.046	.043	
9.0	.443	.385	.346	.382	.334	.302	.265	.235	.214	.154	.139	.128	.050	.046	.042	
10.0	.438	.381	.344	.377	.331	.300	.262	.233	.213	.153	.138	.127	.050	.045	.042	

C Range: 0 - 360DEG  
 C Interval: 22.5DEG  
 Test Speed: HIGH  
 Temperature:25.2℃  
 Operators:Dano  
 Test Date:2023-05-30

γ Range: 0 - 180DEG  
 γ Interval: 1.0DEG  
 Test System:EVERFINE GO-R5000\_V2 SYSTEM V2.00.459  
 Humidity:55.3%  
 Test Distance:2.900m [K=0.8810]  
 Remarks:

UGR(Unified Glare Rating) Table

Test:U:120.1V I:0.2395A P:28.52W PF:0.9919 Freq:60.01Hz Lamp Flux:1741.55x1 lm		
NAME: VN27-36-30S-952C5-MVTD-BK 5000K	TYPE:	WEIGHT:
SPEC.:	DIM.:	SERIAL No.:
MFR.: FOSHAN LEDKEY LIGHTING CO.,LTD.	SUR.:	Shielding Angle:

ceiling/cavity	0.7	0.7	0.5	0.5	0.3	0.7	0.7	0.5	0.5	0.3
walls	0.5	0.3	0.5	0.3	0.3	0.5	0.3	0.5	0.3	0.3
working plane	0.2	0.2	0.2	0.2	0.2	0.2	0.2	0.2	0.2	0.2
Room dimensions	Viewed crosswise					Viewed endwise				
x = 2H y = 2H	25.5	27.8	27.1	29.5	31.6	20.2	22.4	21.8	24.1	26.2
3H	29.0	31.0	30.6	32.8	34.9	21.7	23.8	23.4	25.5	27.7
4H	30.8	32.8	32.5	34.5	36.7	22.2	24.2	23.9	25.9	28.1
6H	32.8	34.7	34.5	36.4	38.6	22.5	24.3	24.2	26.1	28.3
8H	33.9	35.7	35.6	37.5	39.7	22.5	24.3	24.2	26.0	28.3
12H	35.2	36.9	36.9	38.7	41.0	22.4	24.1	24.2	25.9	28.2
4H 2H	25.6	27.6	27.3	29.3	31.5	22.2	24.1	23.8	25.9	28.0
3H	29.4	31.1	31.1	32.9	35.1	24.1	25.8	25.8	27.6	29.8
4H	31.4	33.0	33.2	34.8	37.1	24.8	26.4	26.6	28.2	30.5
6H	33.7	35.1	35.5	36.9	39.3	25.3	26.7	27.1	28.6	30.9
8H	34.9	36.3	36.7	38.1	40.5	25.4	26.7	27.2	28.6	31.0
12H	36.4	37.6	38.2	39.5	41.9	25.4	26.6	27.3	28.5	30.9
8H 4H	31.6	32.9	33.4	34.7	37.1	26.9	28.2	28.7	30.0	32.4
6H	34.2	35.3	36.0	37.2	39.6	27.9	29.1	29.8	31.0	33.4
8H	35.6	36.7	37.5	38.6	41.0	28.4	29.4	30.2	31.3	33.7
12H	37.4	38.3	39.3	40.2	42.7	28.6	29.5	30.5	31.5	33.9
12H 4H	31.5	32.7	33.4	34.6	37.0	27.6	28.8	29.4	30.7	33.0
6H	34.2	35.2	36.1	37.1	39.6	29.0	30.0	30.9	31.9	34.4
8H	35.8	36.7	37.7	38.7	41.1	29.7	30.6	31.6	32.5	35.0
CIE190: 2010										

CIE190: 2010  
Area: 0.002827 m2

C Range: 0 - 360DEG  
C Interval: 22.5DEG  
Test Speed: HIGH  
Temperature:25.2℃  
Operators:Dano  
Test Date:2023-05-30

γ Range: 0 - 180DEG  
γ Interval: 1.0DEG  
Test System:EVERFINE GO-R5000\_V2 SYSTEM V2.00.459  
Humidity:55.3%  
Test Distance:2.900m [K=0.8810]  
Remarks:

**UTILIZATION FACTORS TABLE**

Test:U:120.1V I:0.2395A P:28.52W PF:0.9919 Freq:60.01Hz Lamp Flux:1741.55x1 lm		
NAME: VN27-36-30S-952C5-MVTD-BK 5000K	TYPE:	WEIGHT:
SPEC.:	DIM.:	SERIAL No.:
MFR.: FOSHAN LEDKEY LIGHTING CO.,LTD.	SUR.:	Shielding Angle:

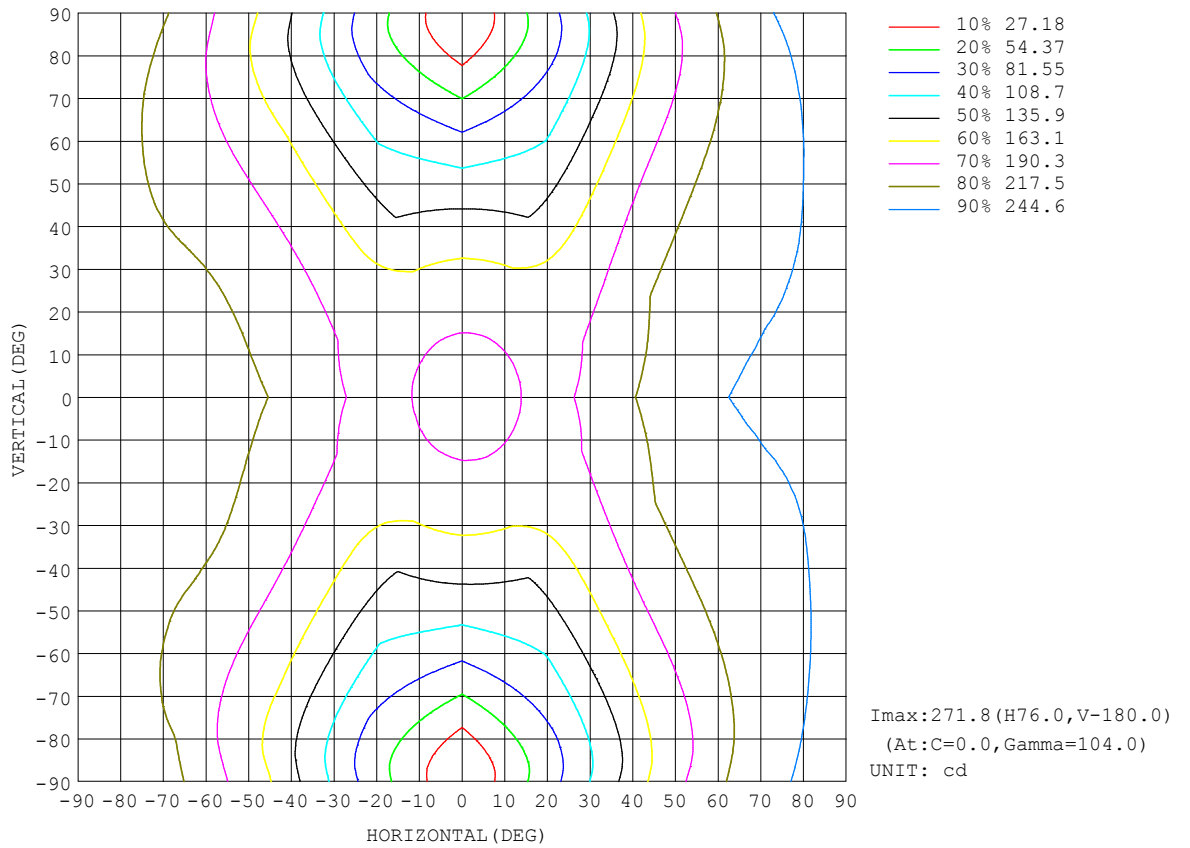
REFLECTANCE										
Ceiling	0.8	0.8	0.8	0.7	0.7	0.7	0.5	0.5	0.5	0
Walls	0.7	0.5	0.3	0.7	0.5	0.3	0.7	0.5	0.3	0
Working plane	0.2	0.2	0.2	0.2	0.2	0.2	0.2	0.2	0.2	0
ROOM INDEX	UTILIZATION FACTORS (PERCENT) $k(RI) \times RCR = 5$									
k = 0.60	39	26	19	37	26	19	35	24	18	11
0.80	48	34	26	45	33	25	41	30	23	15
1.00	55	41	32	52	39	31	47	38	29	18
1.25	62	48	39	58	46	37	52	42	34	22
1.50	67	54	44	63	51	42	56	46	39	25
2.00	75	62	53	70	59	50	62	53	46	30
2.50	80	68	59	75	64	56	65	57	50	33
3.00	84	73	64	78	69	61	68	61	55	35
4.00	89	80	72	83	75	68	72	66	60	39
5.00	92	84	77	86	79	73	75	69	64	42
ROOM INDEX	UF(total)									Direct
According to DIN EN 13032-2 2004			Suspended				SHRNOM = 1.25			

C Range: 0 - 360DEG  
 C Interval: 22.5DEG  
 Test Speed: HIGH  
 Temperature:25.2°C  
 Operators:Dano  
 Test Date:2023-05-30

$\gamma$  Range: 0 - 180DEG  
 $\gamma$  Interval: 1.0DEG  
 Test System:EVERFINE GO-R5000\_V2 SYSTEM V2.00.459  
 Humidity:55.3%  
 Test Distance:2.900m [K=0.8810]  
 Remarks:

ISOCANDELA DIAGRAM

Test:U:120.1V I:0.2395A P:28.52W PF:0.9919 Freq:60.01Hz Lamp Flux:1741.55x1 lm		
NAME: VN27-36-30S-952C5-MVTD-BK 5000K	TYPE:	WEIGHT:
SPEC.:	DIM.:	SERIAL No.:
MFR.: FOSHAN LEDKEY LIGHTING CO.,LTD.	SUR.:	Shielding Angle:



C Range: 0 - 360DEG  
C Interval: 22.5DEG  
Test Speed: HIGH  
Temperature:25.2°C  
Operators:Dano  
Test Date:2023-05-30

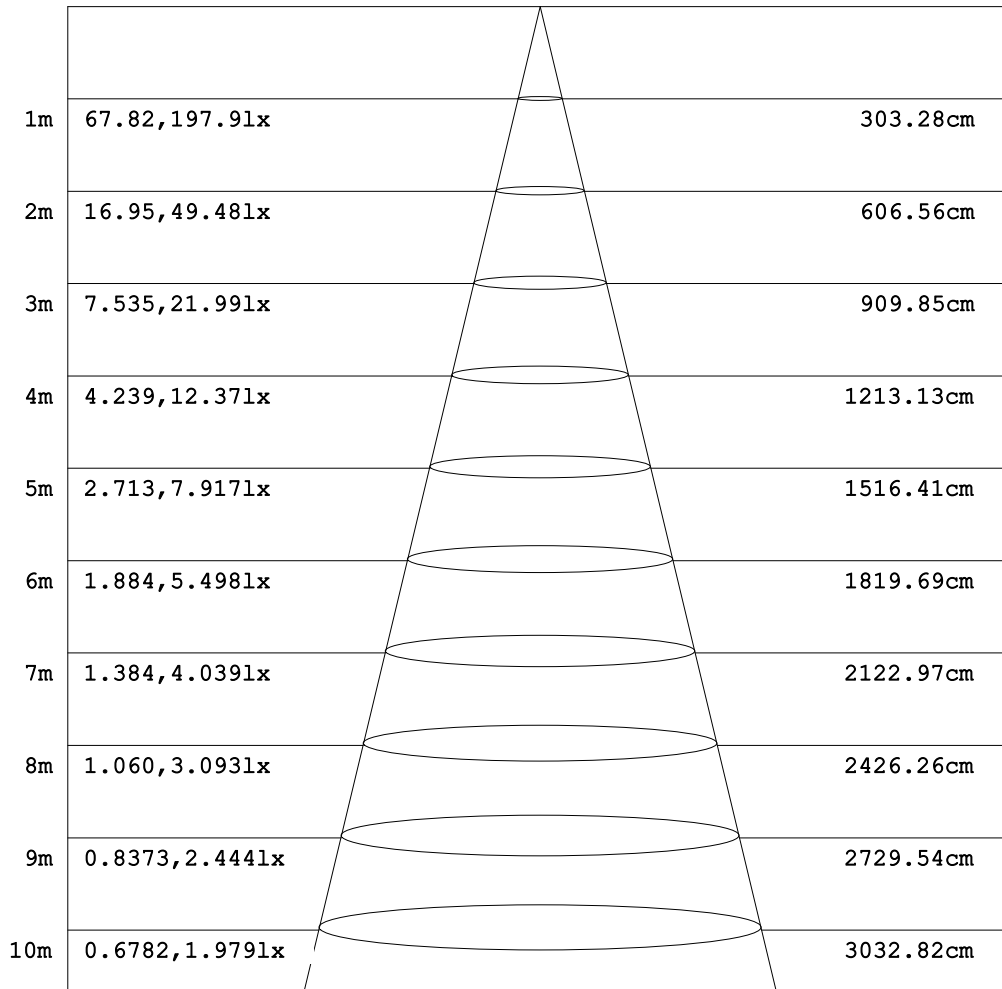
γ Range: 0 - 180DEG  
γ Interval: 1.0DEG  
Test System:EVERFINE GO-R5000\_V2 SYSTEM V2.00.459  
Humidity:55.3%  
Test Distance:2.900m [K=0.8810]  
Remarks:



**AAI Figure**

Test:U:120.1V I:0.2395A P:28.52W PF:0.9919 Freq:60.01Hz Lamp Flux:1741.55x1 lm		
NAME: VN27-36-30S-952C5-MVTD-BK 5000K	TYPE:	WEIGHT:
SPEC.:	DIM.:	SERIAL No.:
MFR.: FOSHAN LEDKEY LIGHTING CO.,LTD.	SUR.:	Shielding Angle:

Flux out:505.2 lm



Angle:113.19deg

Height

Eavg, Emax

Diameter

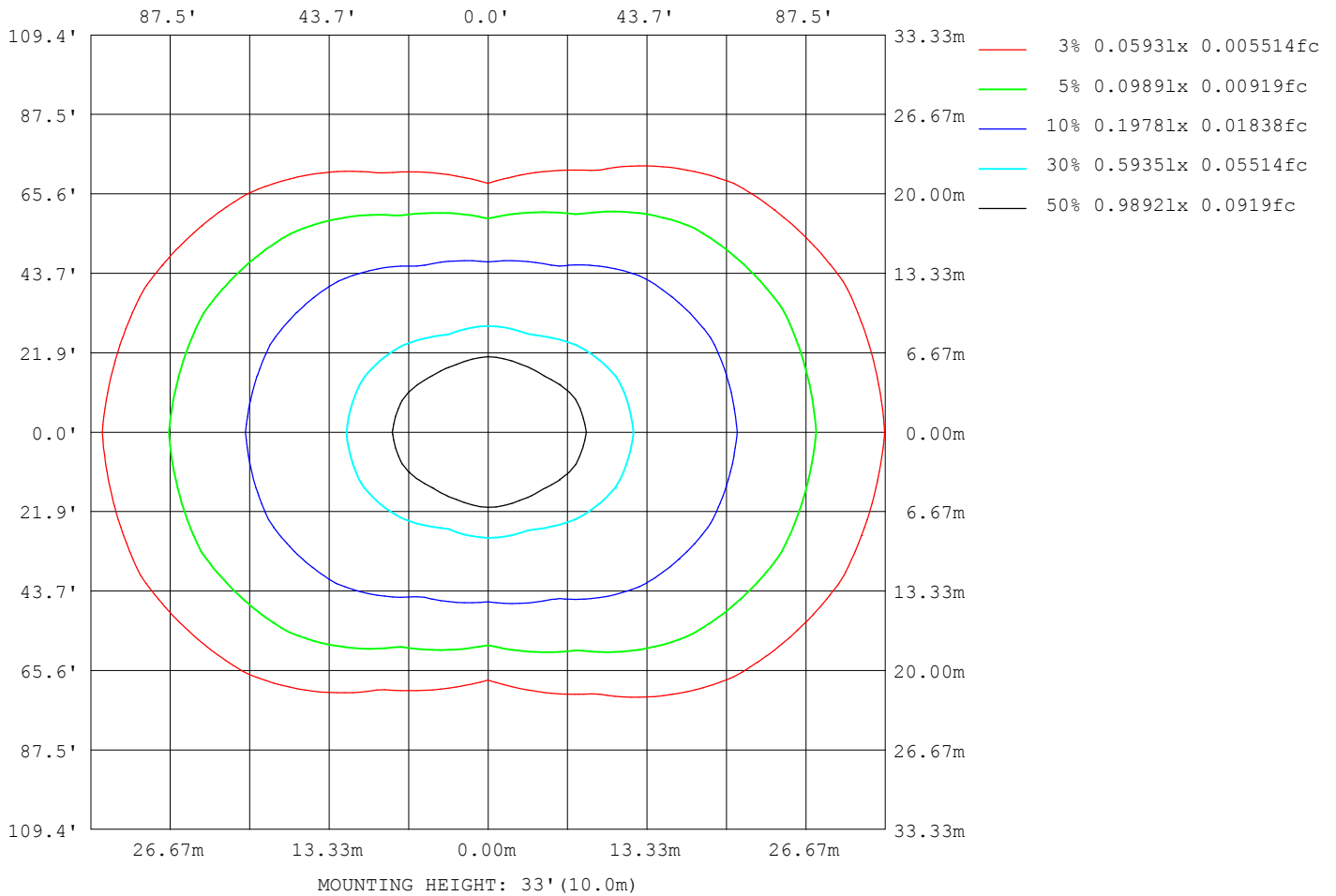
Note:The Curves indicate the illuminated area and the average illumination when the luminaire is at different distance.

C Range: 0 - 360DEG  
C Interval: 22.5DEG  
Test Speed: HIGH  
Temperature:25.2°C  
Operators:Dano  
Test Date:2023-05-30

γ Range: 0 - 180DEG  
γ Interval: 1.0DEG  
Test System:EVERFINE GO-R5000\_V2 SYSTEM V2.00.459  
Humidity:55.3%  
Test Distance:2.900m [K=0.8810]  
Remarks:

ISOLUX DIAGRAM

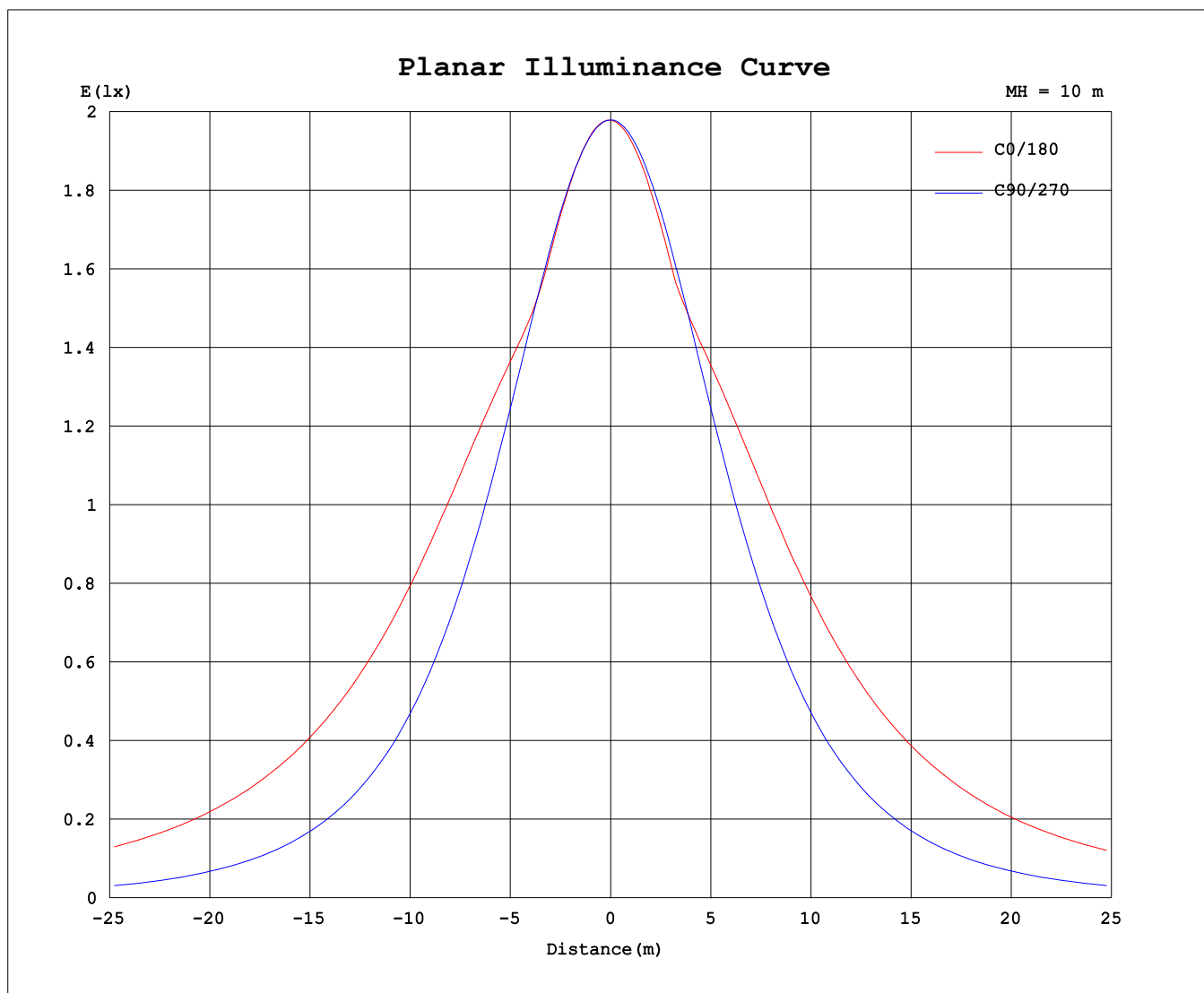
Test:U:120.1V I:0.2395A P:28.52W PF:0.9919 Freq:60.01Hz Lamp Flux:1741.55x1 lm		
NAME: VN27-36-30S-952C5-MVTD-BK 5000K	TYPE:	WEIGHT:
SPEC.:	DIM.:	SERIAL No.:
MFR.: FOSHAN LEDKEY LIGHTING CO.,LTD.	SUR.:	Shielding Angle:



C Range: 0 - 360DEG  
 C Interval: 22.5DEG  
 Test Speed: HIGH  
 Temperature:25.2°C  
 Operators:Dano  
 Test Date:2023-05-30

γ Range: 0 - 180DEG  
 γ Interval: 1.0DEG  
 Test System:EVERFINE GO-R5000\_V2 SYSTEM V2.00.459  
 Humidity:55.3%  
 Test Distance:2.900m [K=0.8810]  
 Remarks:

Planar Illuminance Curve



C Range: 0 - 360DEG  
 C Interval: 22.5DEG  
 Test Speed: HIGH  
 Temperature: 25.2°C  
 Operators: Dano  
 Test Date: 2023-05-30

γ Range: 0 - 180DEG  
 γ Interval: 1.0DEG  
 Test System: EVERFINE GO-R5000\_V2 SYSTEM V2.00.459  
 Humidity: 55.3%  
 Test Distance: 2.900m [K=0.8810]  
 Remarks:

LUMINOUS DISTRIBUTION INTENSITY DATA

Test:U:120.1V I:0.2395A P:28.52W PF:0.9919 Freq:60.01Hz Lamp Flux:1741.55x1 lm		
NAME: VN27-36-30S-952C5-MVTD-BK 5000K	TYPE:	WEIGHT:
SPEC.:	DIM.:	SERIAL No.:
MFR.: FOSHAN LEDKEY LIGHTING CO.,LTD.	SUR.:	Shielding Angle:

Table--1

UNIT: cd

C (DEG) γ (DEG)	0	22.5	45	67.5	90	112.5	135	157.5	180	202.5	225	247.5	270	292.5	315	337.5			
0	198	198	198	198	198	198	198	198	198	198	198	198	198	198	198	198			
5	197	197	197	197	197	197	196	196	196	196	196	197	197	197	197	197			
10	194	194	195	195	194	194	193	192	192	192	193	194	195	195	194	194			
15	189	189	190	190	190	189	188	186	186	186	188	189	190	190	190	189			
20	184	183	183	185	184	183	180	180	182	180	181	183	184	184	183	183			
25	188	183	176	177	177	175	172	182	187	183	173	175	177	177	176	183			
30	197	189	172	168	168	165	170	188	195	188	171	166	168	168	171	189			
35	207	197	172	157	157	154	171	194	203	194	172	155	158	157	172	197			
40	216	205	174	145	146	142	172	201	211	200	173	144	146	146	174	205			
45	225	211	176	135	133	132	173	206	217	205	174	135	133	135	177	213			
50	232	217	178	127	119	124	174	210	222	209	174	127	119	126	179	219			
55	238	221	178	120	103	116	174	214	226	211	172	119	104	119	181	224			
60	243	225	178	112	87.4	108	173	215	229	212	170	111	88.4	112	181	228			
65	246	226	176	105	70.4	100	170	216	230	212	167	102	71.3	105	181	231			
70	248	227	173	97.2	52.9	91.8	166	216	231	211	162	93.4	53.9	97.4	179	232			
75	249	226	170	89.3	35.2	83.4	162	214	230	209	157	84.2	36.2	89.8	176	232			
80	250	225	166	82.0	18.6	75.8	159	214	231	207	152	75.7	19.5	82.9	173	232			
85	252	226	164	77.0	5.59	71.1	158	216	234	209	150	69.9	6.14	78.2	171	233			
90	260	233	169	79.1	0.33	74.0	164	224	242	216	155	71.5	0.37	80.3	176	240			
95	266	240	175	85.3	1.07	79.2	170	230	248	222	160	76.2	0.60	86.7	183	247			
100	271	245	180	90.4	1.98	83.2	173	233	251	225	164	80.0	1.36	91.8	188	252			
105	272	247	182	86.1	3.35	80.2	174	233	252	226	165	80.3	2.49	83.6	190	253			
110	270	245	183	67.4	4.94	67.2	173	231	249	224	165	67.9	3.82	68.9	190	252			
115	264	241	168	54.7	6.90	53.3	165	226	243	219	160	52.6	5.37	54.8	168	247			
120	249	221	145	42.4	9.02	42.0	145	217	235	212	141	40.1	6.94	44.2	144	225			
125	217	192	121	39.4	11.1	39.3	121	191	215	188	119	34.3	8.87	41.9	121	196			
130	183	160	94.1	37.0	13.2	36.9	94.0	161	184	159	92.8	32.9	11.1	39.6	95.5	160			
135	148	128	65.5	36.4	15.0	34.7	73.7	126	151	127	73.2	31.6	13.0	37.3	72.0	128			
140	113	95.9	55.9	35.2	16.9	32.6	59.2	97.3	113	98.0	56.4	31.0	14.8	34.9	62.6	95.8			
145	81.6	71.4	51.4	33.7	19.0	30.4	52.9	71.5	85.9	74.0	52.0	31.0	17.0	31.2	54.8	70.3			
150	68.8	63.5	46.9	31.8	20.5	28.3	46.7	60.1	64.6	60.8	48.5	31.3	16.8	26.8	44.1	60.7			
155	59.7	55.5	40.9	29.6	21.2	26.8	40.7	51.7	55.7	53.9	44.8	31.3	18.8	23.5	39.2	51.0			
160	50.6	44.9	37.4	23.4	18.2	25.4	34.9	43.4	46.7	46.2	40.3	30.4	21.2	19.5	31.8	41.8			
165	41.3	37.3	30.6	15.2	15.9	23.8	29.8	35.2	37.8	37.7	34.2	28.1	18.3	14.0	19.8	34.8			
170	32.0	25.7	13.9	14.5	15.9	17.4	26.2	28.4	29.6	29.7	28.2	24.8	12.6	13.4	15.3	17.5			
175	25.7	12.9	18.2	20.0	19.3	18.1	20.8	24.0	24.0	23.4	23.2	19.4	15.4	17.0	17.8	16.2			
180	19.9	23.5	26.6	24.9	24.6	24.9	24.9	22.4	13.7	13.6	22.6	24.5	24.5	24.6	24.6	24.6			

C Range: 0 - 360DEG  
 C Interval: 22.5DEG  
 Test Speed: HIGH  
 Temperature:25.2℃  
 Operators:Dano  
 Test Date:2023-05-30

γ Range: 0 - 180DEG  
 γ Interval: 1.0DEG  
 Test System:EVERFINE GO-R5000\_V2 SYSTEM V2.00.459  
 Humidity:55.3%  
 Test Distance:2.900m [K=0.8810]  
 Remarks: