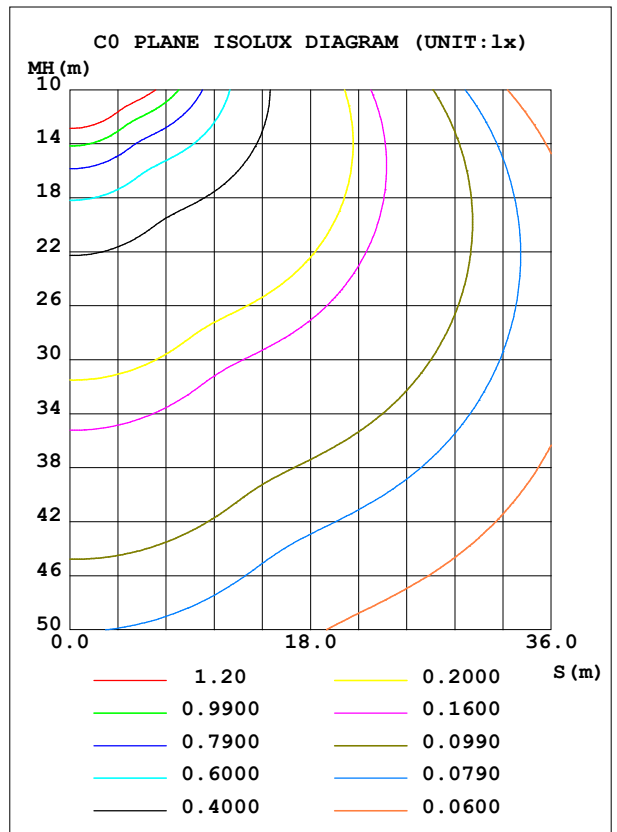
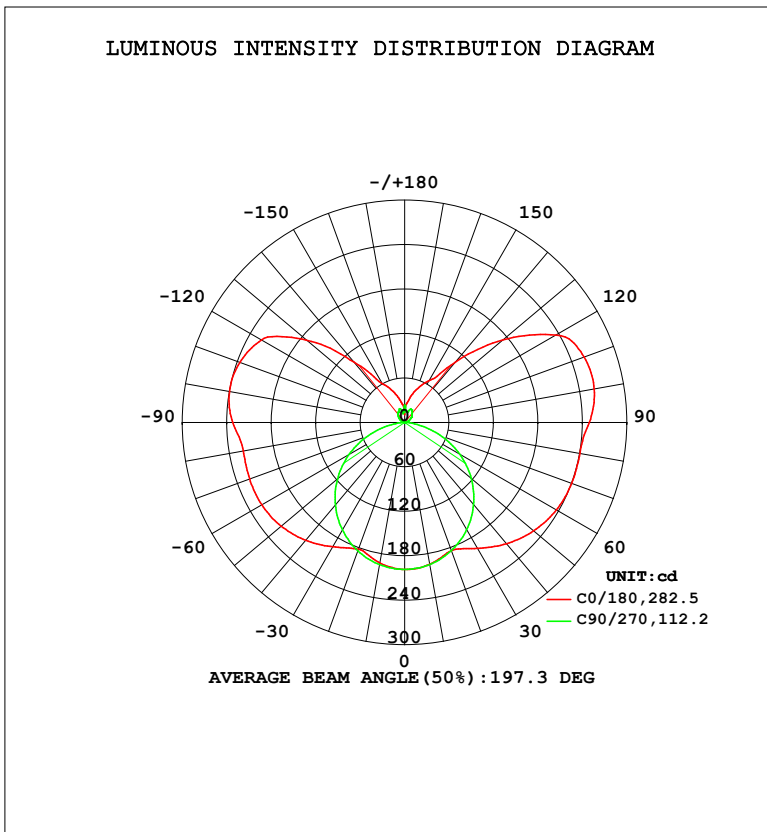


LUMINAIRE PHOTOMETRIC TEST REPORT

Test:U:120.1V I:0.2454A P:29.24W PF:0.9922 Freq:60.01Hz Lamp Flux:1683.65x1 lm		
NAME: VN27-36-30S-952C5-MVTD-BK 4000K	TYPE:	WEIGHT:
SPEC.:	DIM.:	SERIAL No.:
MFR.: FOSHAN LEDKEY LIGHTING CO.,LTD.	SUR.:	Shielding Angle:

DATA OF LAMP		PHOTOMETRIC DATA				Eff: 57.58 lm/W
MODEL		I _{max} (cd)	260.6	S/MH (C0/180)	1.59	
NOMINAL POWER (W)		LOR (%)	100.0	S/MH (C90/270)	1.26	
RATED VOLTAGE (V)	120	TOTAL FLUX (lm)	1683.7	η UP, DN (C0-180)	20.1, 30.2	
NOMINAL FLUX (lm)	1683.65	CIE CLASS	SEMI-D.	η UP, DN (C180-360)	19.8, 30.0	
LAMPS INSIDE	1	η up (%)	39.8	CIBSE SHR NOM	1.50	
TEST VOLTAGE (V)	120	η down (%)	60.2	CIBSE SHR MAX	1.55	



C Range: 0 - 360DEG
 C Interval: 22.5DEG
 Test Speed: HIGH
 Temperature: 25.2°C
 Operators: Dano
 Test Date: 2023-05-30

γ Range: 0 - 180DEG
 γ Interval: 1.0DEG
 Test System: EVERFINE GO-R5000_V2 SYSTEM V2.00.459
 Humidity: 55.3%
 Test Distance: 2.900m [K=0.8810]
 Remarks:

ZONAL FLUX DIAGRAM

ZONAL FLUX DIAGRAM:

γ	C0	C45	C90	C135	C180	C225	C270	C315	γ	Φ zone	Φ total	%lum,lamp
10	194.5	194.9	194.8	193.3	192.6	193.4	194.9	195.0	0- 10	18.73	18.73	1.11,1.11
20	184.2	183.5	184.2	180.4	182.3	180.7	184.6	183.6	10- 20	53.35	72.08	4.28,4.28
30	196.4	171.6	167.4	170.0	193.9	170.9	167.9	171.1	20- 30	82.80	154.9	9.2,9.2
40	213.7	172.8	145.0	170.5	207.7	171.2	145.5	172.9	30- 40	110.0	264.9	15.7,15.7
50	227.5	175.0	117.5	171.1	217.8	170.7	118.3	176.5	40- 50	132.9	397.7	23.6,23.6
60	236.3	173.8	85.84	168.1	222.5	166.1	86.78	177.2	50- 60	149.4	547.2	32.5,32.5
70	240.0	167.7	51.14	160.9	222.8	156.7	52.32	173.0	60- 70	157.1	704.3	41.8,41.8
80	240.3	159.2	17.30	152.2	221.2	145.9	18.24	165.8	70- 80	155.6	859.9	51.1,51.1
90	249.4	162.0	0.3225	157.3	232.0	148.8	0.3125	169.2	80- 90	153.1	1013	60.2,60.2
100	259.7	172.2	1.983	165.3	240.2	156.4	1.375	179.3	90-100	161.1	1174	69.7,69.7
110	257.9	174.0	4.836	164.8	236.9	156.6	3.749	180.0	100-110	158.8	1333	79.2,79.2
120	235.8	136.8	8.700	136.0	223.0	132.6	6.728	135.8	110-120	136.2	1469	87.3,87.3
130	173.4	88.06	12.62	87.96	173.1	86.85	10.61	89.26	120-130	97.91	1567	93.1,93.1
140	106.5	52.89	16.11	55.72	106.1	52.89	14.17	58.71	130-140	57.99	1625	96.5,96.5
150	65.00	44.37	19.47	43.96	60.77	45.66	15.96	41.49	140-150	31.34	1656	98.4,98.4
160	47.74	35.36	17.07	32.82	44.04	37.95	20.03	29.98	150-160	17.67	1674	99.4,99.4
170	30.23	13.15	14.97	24.64	27.96	26.61	12.48	14.54	160-170	7.730	1682	99.9,99.9
180	19.69	25.13	23.26	23.63	12.92	21.42	23.23	23.26	170-180	1.852	1684	100,100
DEG	LUMINOUS INTENSITY:cd									UNIT:lm		

Conical surface Flux(90deg): 328.77 lm

%lum = 19.5%

%lamp = 19.5%

Conical surface Flux(120deg): 547.15 lm

%lum = 32.5%

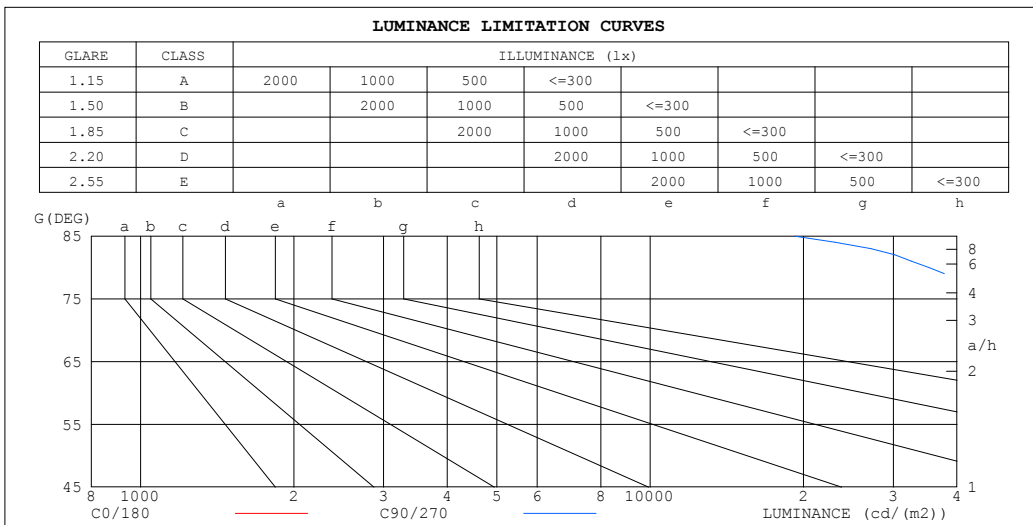
%lamp = 32.5%

C Range: 0 - 360DEG
 C Interval: 22.5DEG
 Test Speed: HIGH
 Temperature:25.2℃
 Operators:Dano
 Test Date:2023-05-30

γ Range: 0 - 180DEG
 γ Interval: 1.0DEG
 Test System:EVERFINE GO-R5000_V2 SYSTEM V2.00.459
 Humidity:55.3%
 Test Distance:2.900m [K=0.8810]
 Remarks:

LUMINANCE LIMITATION CURVES

Test:U:120.1V I:0.2454A P:29.24W PF:0.9922 Freq:60.01Hz Lamp Flux:1683.65x1 lm		
NAME: VN27-36-30S-952C5-MVTD-BK 4000K	TYPE:	WEIGHT:
SPEC.:	DIM.:	SERIAL No.:
MFR.: FOSHAN LEDKEY LIGHTING CO.,LTD.	SUR.:	Shielding Angle:



LUMINANCE cd/(m2)		
G (DEG)	C0/180	C90/270
85	982698	19216
80	489777	35235
75	328521	45879
70	248444	52887
65	199990	57547
60	167304	60719
55	143545	62959
50	125303	64630
45	110724	65887

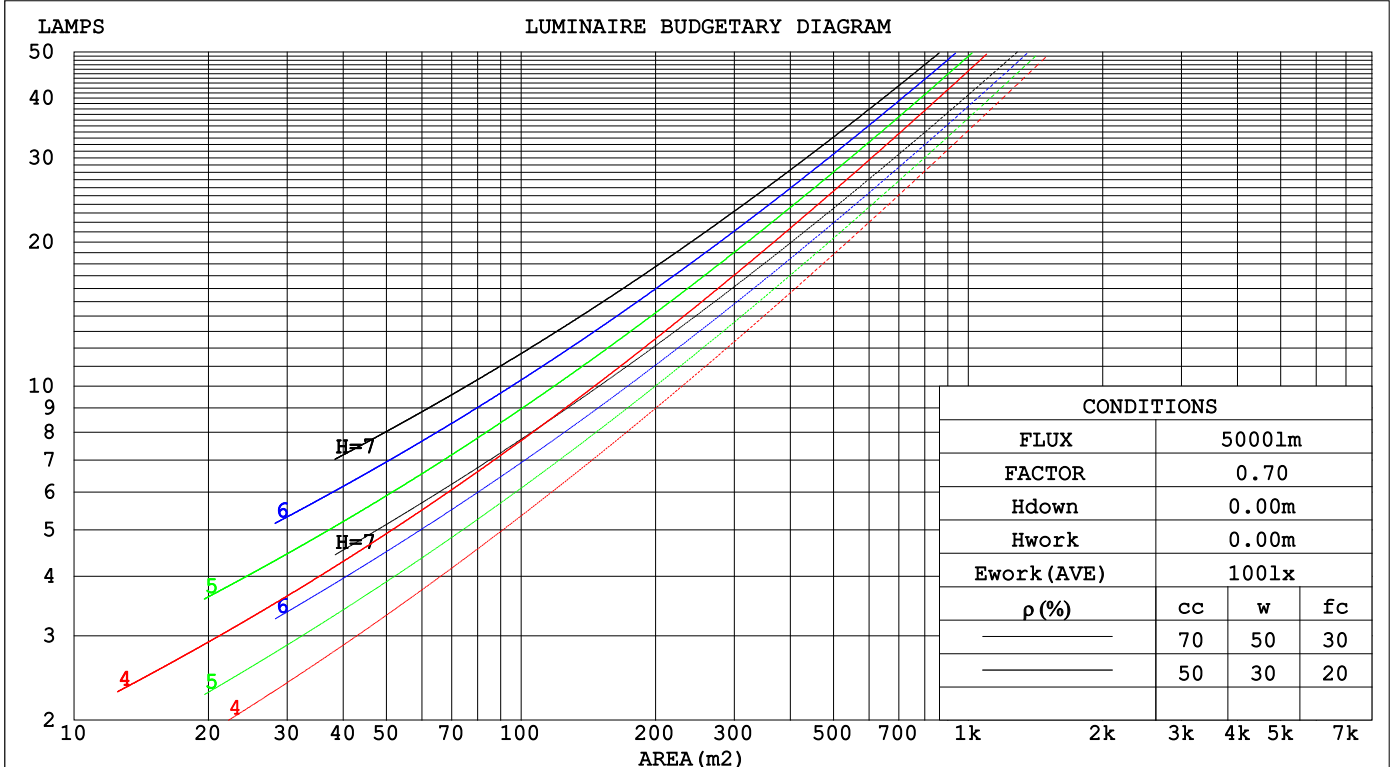
C Range: 0 - 360DEG
 C Interval: 22.5DEG
 Test Speed: HIGH
 Temperature:25.2℃
 Operators:Dano
 Test Date:2023-05-30

γ Range: 0 - 180DEG
 γ Interval: 1.0DEG
 Test System:EVERFINE GO-R5000_V2 SYSTEM V2.00.459
 Humidity:55.3%
 Test Distance:2.900m [K=0.8810]
 Remarks:

CU AND LUMINAIRE BUDGETARY ESTIMATE DIAGRAM

Test:U:120.1V I:0.2454A P:29.24W PF:0.9922 Freq:60.01Hz Lamp Flux:1683.65x1 lm		
NAME: VN27-36-30S-952C5-MVTD-BK 4000K	TYPE:	WEIGHT:
SPEC.:	DIM.:	SERIAL No.:
MFR.: FOSHAN LEDKEY LIGHTING CO.,LTD.	SUR.:	Shielding Angle:

ρcc	80%			70%			50%			30%			10%			0
ρw	50%	30%	10%	50%	30%	10%	50%	30%	10%	50%	30%	10%	50%	30%	10%	0
ρfc	20%			20%			20%			20%			20%			0
RCR	RCR:Room Cavity Ratio						Coefficients of Utilization(CU)									
0.0	1.10	1.10	1.10	1.02	1.02	1.02	.89	.89	.89	.77	.77	.77	.65	.65	.65	.60
1.0	.89	.84	.79	.83	.78	.74	.72	.68	.64	.61	.58	.55	.51	.49	.47	.42
2.0	.76	.68	.61	.70	.63	.57	.60	.55	.50	.51	.47	.43	.42	.39	.36	.32
3.0	.65	.56	.49	.61	.53	.46	.52	.45	.40	.44	.39	.34	.36	.32	.29	.25
4.0	.57	.48	.40	.53	.45	.38	.45	.39	.33	.38	.33	.29	.32	.28	.24	.20
5.0	.50	.41	.34	.47	.38	.32	.40	.33	.28	.34	.28	.24	.28	.24	.20	.17
6.0	.45	.36	.29	.42	.33	.27	.36	.29	.24	.31	.25	.21	.25	.21	.17	.14
7.0	.40	.31	.25	.38	.29	.24	.32	.26	.21	.28	.22	.18	.23	.19	.15	.13
8.0	.36	.28	.22	.34	.26	.21	.29	.23	.18	.25	.20	.16	.21	.17	.13	.11
9.0	.33	.25	.19	.31	.23	.18	.27	.21	.16	.23	.18	.14	.19	.15	.12	.10
10.0	.30	.23	.17	.28	.21	.16	.25	.19	.14	.21	.16	.13	.18	.14	.11	.09



C Range: 0 - 360DEG
 C Interval: 22.5DEG
 Test Speed: HIGH
 Temperature:25.2°C
 Operators:Dano
 Test Date:2023-05-30

γ Range: 0 - 180DEG
 γ Interval: 1.0DEG
 Test System:EVERFINE GO-R5000_V2 SYSTEM V2.00.459
 Humidity:55.3%
 Test Distance:2.900m [K=0.8810]
 Remarks:

WEC AND CCEC

Test:U:120.1V I:0.2454A P:29.24W PF:0.9922 Freq:60.01Hz Lamp Flux:1683.65x1 lm		
NAME: VN27-36-30S-952C5-MVTD-BK 4000K	TYPE:	WEIGHT:
SPEC.:	DIM.:	SERIAL No.:
MFR.: FOSHAN LEDKEY LIGHTING CO.,LTD.	SUR.:	Shielding Angle:

ρ _{cc}	80%			70%			50%			30%			10%			0
ρ _w	50%	30%	10%	50%	30%	10%	50%	30%	10%	50%	30%	10%	50%	30%	10%	0
ρ _{fc}	20%			20%			20%			20%			20%			0
RCR	RCR:Room Cavity Ratio						Wall Exitance Coefficients(WEC)									
0.0																
1.0	.404	.230	.073	.384	.219	.070	.348	.200	.064	.315	.182	.058	.284	.165	.053	
2.0	.340	.186	.057	.322	.178	.055	.289	.161	.050	.259	.145	.045	.231	.130	.041	
3.0	.298	.159	.047	.282	.151	.045	.252	.136	.041	.224	.123	.038	.198	.110	.034	
4.0	.266	.138	.041	.251	.132	.039	.224	.119	.035	.198	.106	.032	.174	.095	.029	
5.0	.240	.123	.035	.227	.117	.034	.202	.105	.031	.178	.094	.028	.156	.083	.025	
6.0	.219	.110	.031	.207	.105	.030	.184	.094	.027	.162	.084	.025	.142	.075	.022	
7.0	.202	.100	.028	.190	.095	.027	.169	.085	.025	.149	.076	.022	.130	.067	.020	
8.0	.187	.091	.026	.176	.087	.025	.156	.078	.022	.137	.070	.020	.120	.062	.018	
9.0	.174	.084	.023	.164	.080	.022	.145	.072	.020	.128	.064	.018	.111	.057	.016	
10.0	.162	.078	.022	.153	.074	.021	.136	.067	.019	.120	.059	.017	.104	.052	.015	

ρ _{cc}	80%			70%			50%			30%			10%			0
ρ _w	50%	30%	10%	50%	30%	10%	50%	30%	10%	50%	30%	10%	50%	30%	10%	0
ρ _{fc}	20%			20%			20%			20%			20%			0
RCR	RCR:Room Cavity Ratio						Ceiling Cavity Exitance Coefficients(CCEC)									
0.0	.494	.494	.494	.422	.422	.422	.288	.288	.288	.166	.166	.166	.053	.053	.053	
1.0	.493	.461	.433	.422	.396	.373	.288	.272	.258	.166	.158	.150	.053	.051	.048	
2.0	.487	.440	.400	.417	.379	.346	.286	.262	.241	.165	.152	.141	.053	.049	.046	
3.0	.480	.424	.380	.411	.366	.330	.282	.254	.231	.163	.148	.136	.052	.048	.045	
4.0	.472	.412	.367	.405	.356	.319	.279	.248	.224	.161	.145	.133	.052	.047	.044	
5.0	.465	.403	.358	.399	.349	.311	.275	.244	.220	.159	.143	.130	.051	.047	.043	
6.0	.457	.396	.351	.393	.343	.306	.271	.240	.217	.157	.141	.129	.051	.046	.042	
7.0	.450	.389	.347	.387	.338	.302	.268	.237	.214	.156	.139	.127	.050	.046	.042	
8.0	.444	.384	.343	.382	.333	.299	.264	.234	.212	.154	.138	.126	.050	.045	.042	
9.0	.438	.380	.340	.377	.329	.297	.261	.232	.211	.152	.137	.126	.049	.045	.042	
10.0	.432	.376	.338	.372	.326	.295	.258	.229	.210	.151	.136	.125	.049	.045	.041	

C Range: 0 - 360DEG
 C Interval: 22.5DEG
 Test Speed: HIGH
 Temperature:25.2℃
 Operators:Dano
 Test Date:2023-05-30

γ Range: 0 - 180DEG
 γ Interval: 1.0DEG
 Test System:EVERFINE GO-R5000_V2 SYSTEM V2.00.459
 Humidity:55.3%
 Test Distance:2.900m [K=0.8810]
 Remarks:

UGR(Unified Glare Rating) Table

Test:U:120.1V I:0.2454A P:29.24W PF:0.9922 Freq:60.01Hz										
Lamp Flux:1683.65x1 lm										
NAME: VN27-36-30S-952C5-MVTD-BK 4000K					TYPE:			WEIGHT:		
SPEC.:					DIM.:			SERIAL No.:		
MFR.: FOSHAN LEDKEY LIGHTING CO.,LTD.					SUR.:			Shielding Angle:		
ceiling/cavity	0.7	0.7	0.5	0.5	0.3	0.7	0.7	0.5	0.5	0.3
walls	0.5	0.3	0.5	0.3	0.3	0.5	0.3	0.5	0.3	0.3
working plane	0.2	0.2	0.2	0.2	0.2	0.2	0.2	0.2	0.2	0.2
Room dimensions	Viewed crosswise					Viewed endwise				
x = 2H y = 2H	25.5	27.8	27.1	29.4	31.5	20.2	22.5	21.8	24.1	26.2
3H	28.9	31.0	30.6	32.7	34.8	21.7	23.8	23.4	25.5	27.7
4H	30.7	32.7	32.4	34.4	36.6	22.2	24.2	23.9	25.9	28.1
6H	32.7	34.6	34.4	36.3	38.5	22.4	24.3	24.1	26.0	28.2
8H	33.8	35.6	35.5	37.4	39.6	22.4	24.2	24.1	26.0	28.2
12H	35.1	36.8	36.8	38.6	40.8	22.4	24.1	24.1	25.9	28.1
4H 2H	25.6	27.6	27.2	29.3	31.4	22.1	24.1	23.8	25.8	28.0
3H	29.3	31.0	31.0	32.8	35.0	24.0	25.8	25.7	27.5	29.8
4H	31.3	32.9	33.1	34.7	37.0	24.8	26.3	26.5	28.1	30.4
6H	33.6	35.0	35.4	36.8	39.1	25.2	26.6	27.0	28.5	30.8
8H	34.8	36.2	36.6	38.0	40.3	25.3	26.7	27.1	28.5	30.8
12H	36.3	37.5	38.1	39.4	41.7	25.3	26.6	27.2	28.4	30.8
8H 4H	31.5	32.8	33.3	34.7	37.0	26.8	28.1	28.6	29.9	32.3
6H	34.1	35.2	35.9	37.1	39.5	27.8	29.0	29.7	30.9	33.2
8H	35.5	36.6	37.4	38.5	40.9	28.2	29.3	30.1	31.2	33.6
12H	37.3	38.2	39.1	40.1	42.6	28.5	29.4	30.4	31.3	33.8
12H 4H	31.4	32.7	33.3	34.5	36.9	27.5	28.7	29.3	30.6	32.9
6H	34.1	35.1	36.0	37.0	39.5	28.9	29.9	30.8	31.8	34.2
8H	35.7	36.6	37.6	38.5	41.0	29.6	30.5	31.5	32.4	34.9
CIE190: 2010										

CIE190: 2010
Area: 0.002827 m2

C Range: 0 - 360DEG
C Interval: 22.5DEG
Test Speed: HIGH
Temperature:25.2℃
Operators:Dano
Test Date:2023-05-30

γ Range: 0 - 180DEG
γ Interval: 1.0DEG
Test System:EVERFINE GO-R5000_V2 SYSTEM V2.00.459
Humidity:55.3%
Test Distance:2.900m [K=0.8810]
Remarks:

UTILIZATION FACTORS TABLE

Test:U:120.1V I:0.2454A P:29.24W PF:0.9922 Freq:60.01Hz Lamp Flux:1683.65x1 lm		
NAME: VN27-36-30S-952C5-MVTD-BK 4000K	TYPE:	WEIGHT:
SPEC.:	DIM.:	SERIAL No.:
MFR.: FOSHAN LEDKEY LIGHTING CO.,LTD.	SUR.:	Shielding Angle:

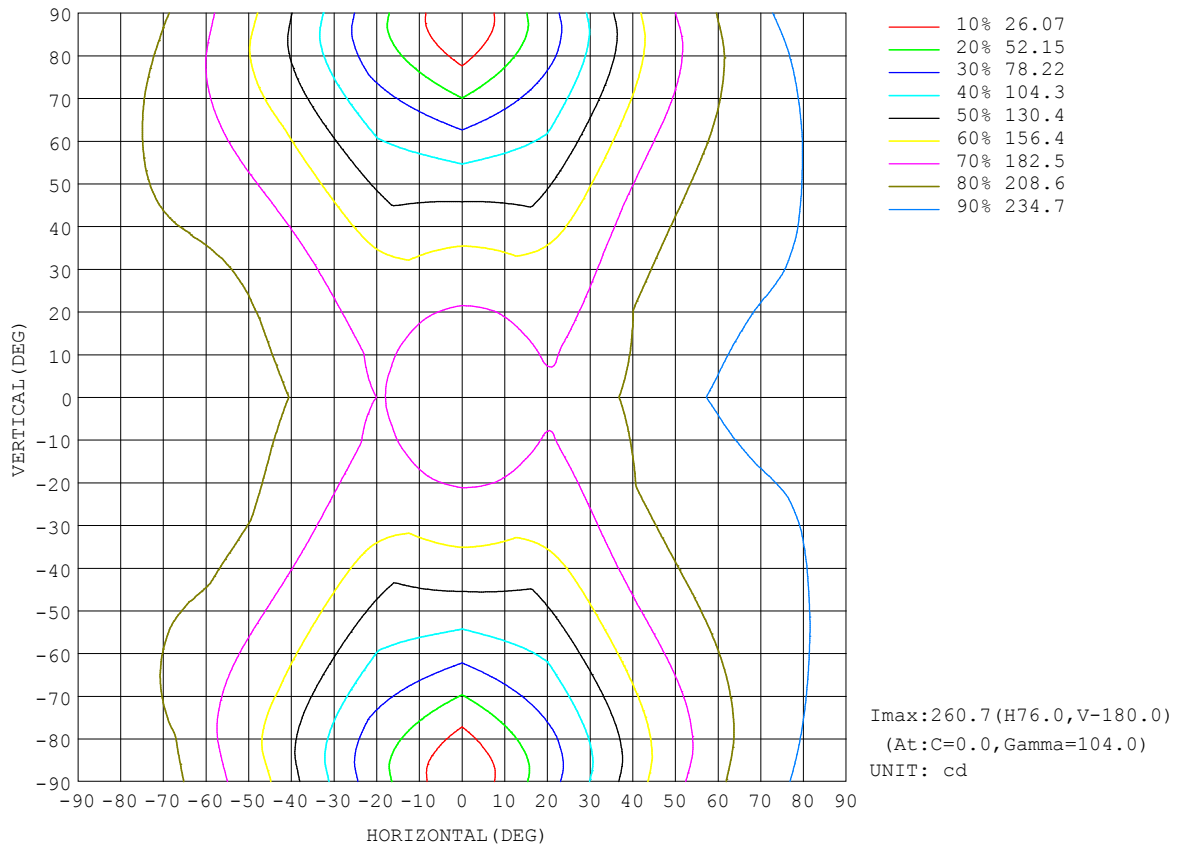
REFLECTANCE										
Ceiling	0.8	0.8	0.8	0.7	0.7	0.7	0.5	0.5	0.5	0
Walls	0.7	0.5	0.3	0.7	0.5	0.3	0.7	0.5	0.3	0
Working plane	0.2	0.2	0.2	0.2	0.2	0.2	0.2	0.2	0.2	0
ROOM INDEX	UTILIZATION FACTORS (PERCENT) $k(RI) \times RCR = 5$									
k = 0.60	39	27	19	38	26	19	35	24	18	11
0.80	48	34	26	46	33	25	42	31	24	15
1.00	55	41	32	53	40	31	47	39	29	19
1.25	62	48	39	59	46	38	52	42	35	23
1.50	67	54	44	64	51	43	56	46	39	26
2.00	75	63	53	71	59	51	62	53	46	30
2.50	80	68	59	75	65	56	66	57	51	33
3.00	84	73	65	79	69	61	69	61	55	36
4.00	89	80	72	83	75	68	73	66	61	40
5.00	92	84	77	86	79	73	75	70	65	43
ROOM INDEX	UF(total)									Direct
According to DIN EN 13032-2 2004			Suspended				SHRNOM = 1.25			

C Range: 0 - 360DEG
 C Interval: 22.5DEG
 Test Speed: HIGH
 Temperature:25.2°C
 Operators:Dano
 Test Date:2023-05-30

γ Range: 0 - 180DEG
 γ Interval: 1.0DEG
 Test System:EVERFINE GO-R5000_V2 SYSTEM V2.00.459
 Humidity:55.3%
 Test Distance:2.900m [K=0.8810]
 Remarks:

ISOCANDELA DIAGRAM

Test:U:120.1V I:0.2454A P:29.24W PF:0.9922 Freq:60.01Hz		
Lamp Flux:1683.65x1 lm		
NAME: VN27-36-30S-952C5-MVTD-BK 4000K	TYPE:	WEIGHT:
SPEC.:	DIM.:	SERIAL No.:
MFR.: FOSHAN LEDKEY LIGHTING CO.,LTD.	SUR.:	Shielding Angle:



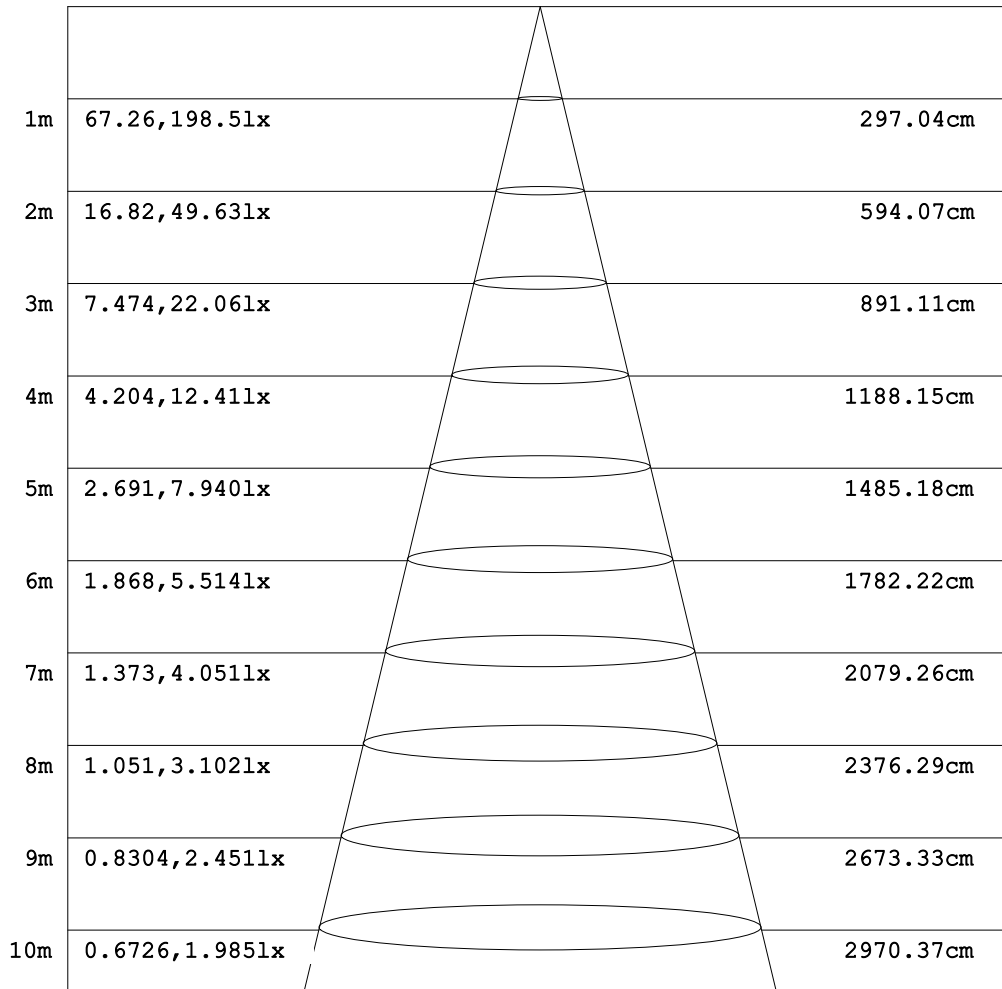
C Range: 0 - 360DEG
 C Interval: 22.5DEG
 Test Speed: HIGH
 Temperature: 25.2°C
 Operators: Dano
 Test Date: 2023-05-30

γ Range: 0 - 180DEG
 γ Interval: 1.0DEG
 Test System: EVERFINE GO-R5000_V2 SYSTEM V2.00.459
 Humidity: 55.3%
 Test Distance: 2.900m [K=0.8810]
 Remarks:

AAI Figure

Test:U:120.1V I:0.2454A P:29.24W PF:0.9922 Freq:60.01Hz Lamp Flux:1683.65x1 lm		
NAME: VN27-36-30S-952C5-MVTD-BK 4000K	TYPE:	WEIGHT:
SPEC.:	DIM.:	SERIAL No.:
MFR.: FOSHAN LEDKEY LIGHTING CO.,LTD.	SUR.:	Shielding Angle:

Flux out:501.1 lm



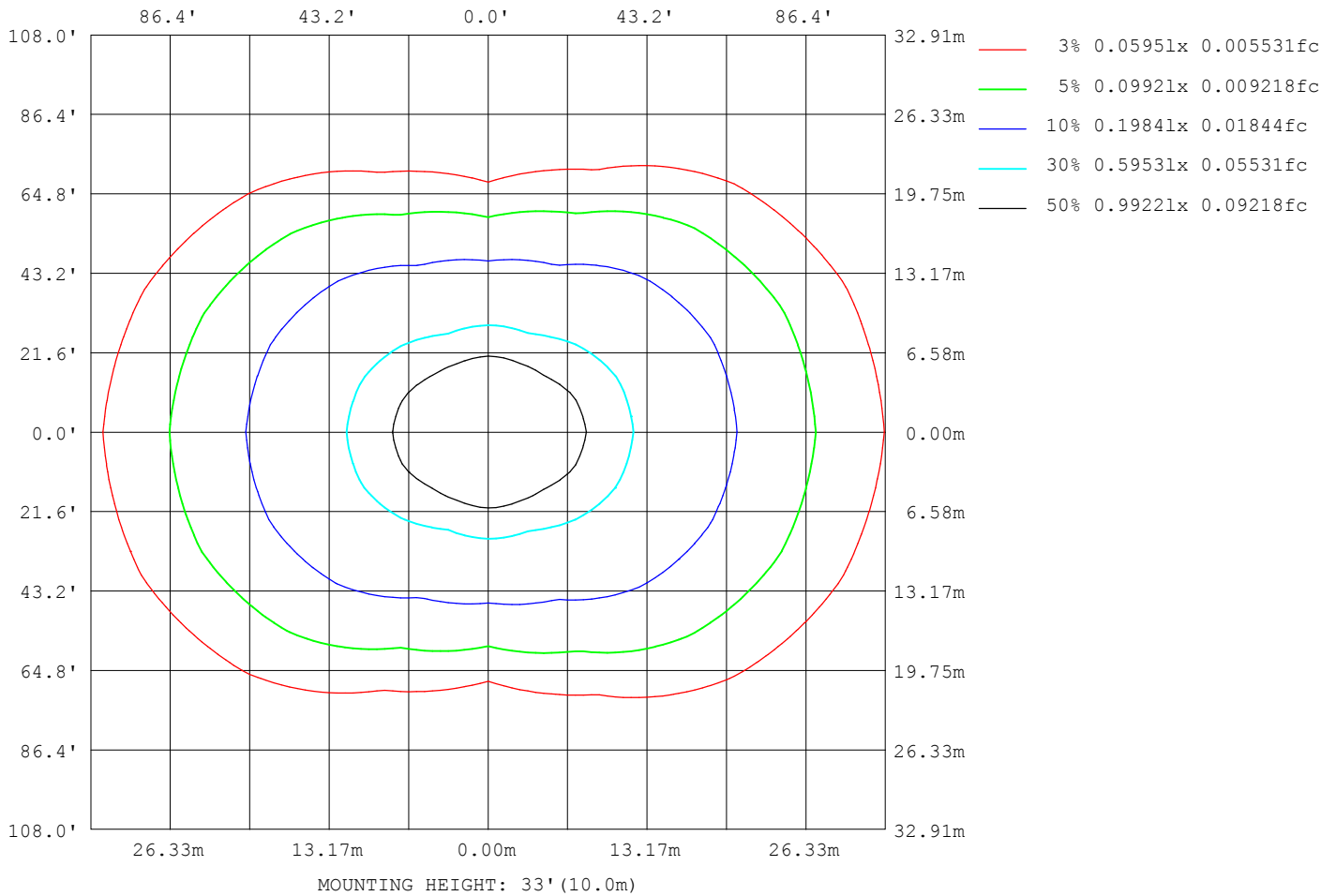
Note:The Curves indicate the illuminated area and the average illumination when the luminaire is at different distance.

C Range: 0 - 360DEG
 C Interval: 22.5DEG
 Test Speed: HIGH
 Temperature:25.2°C
 Operators:Dano
 Test Date:2023-05-30

γ Range: 0 - 180DEG
 γ Interval: 1.0DEG
 Test System:EVERFINE GO-R5000_V2 SYSTEM V2.00.459
 Humidity:55.3%
 Test Distance:2.900m [K=0.8810]
 Remarks:

ISOLUX DIAGRAM

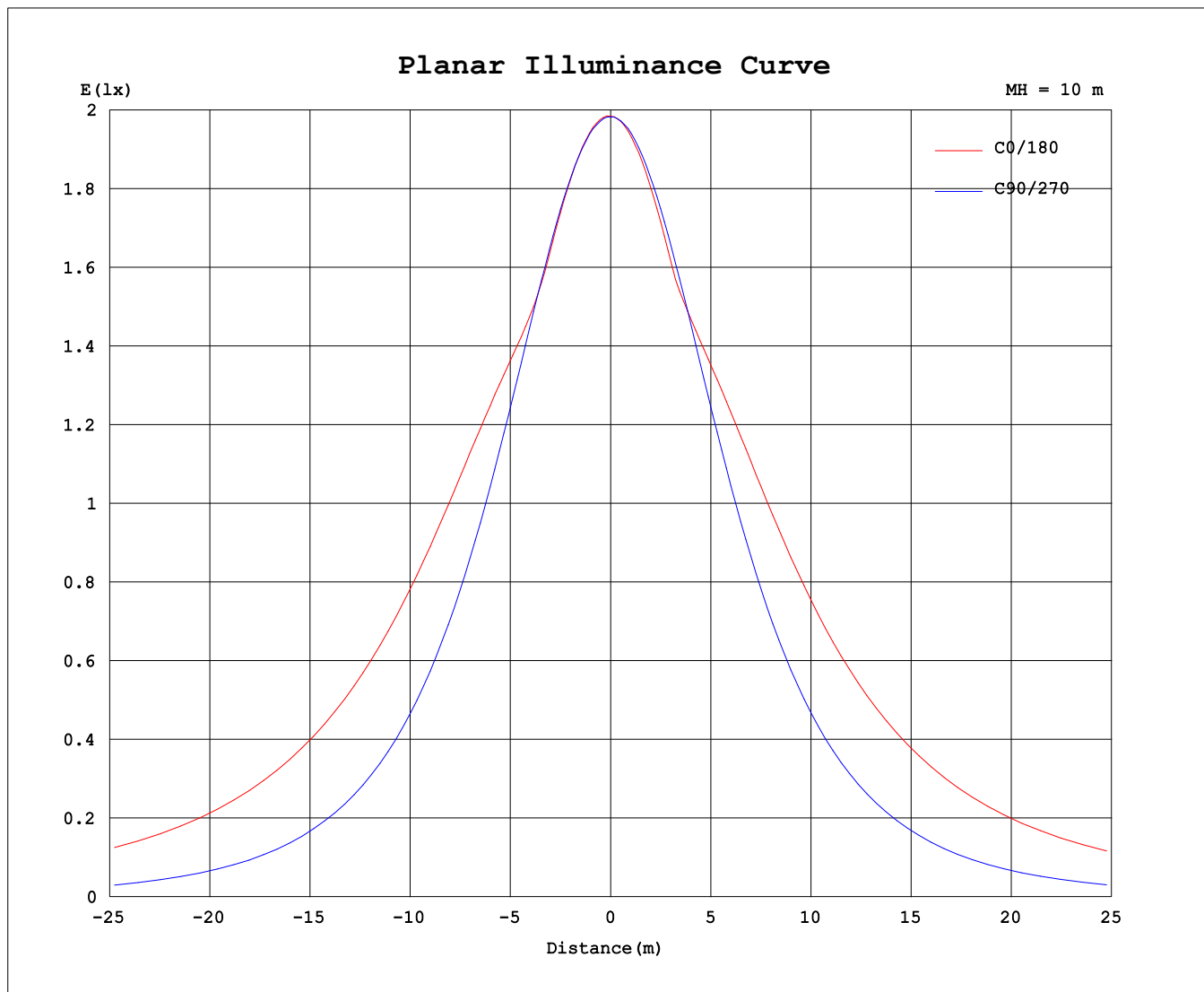
Test:U:120.1V I:0.2454A P:29.24W PF:0.9922 Freq:60.01Hz Lamp Flux:1683.65x1 lm		
NAME: VN27-36-30S-952C5-MVTD-BK 4000K	TYPE:	WEIGHT:
SPEC.:	DIM.:	SERIAL No.:
MFR.: FOSHAN LEDKEY LIGHTING CO.,LTD.	SUR.:	Shielding Angle:



C Range: 0 - 360DEG
 C Interval: 22.5DEG
 Test Speed: HIGH
 Temperature:25.2°C
 Operators:Dano
 Test Date:2023-05-30

γ Range: 0 - 180DEG
 γ Interval: 1.0DEG
 Test System:EVERFINE GO-R5000_V2 SYSTEM V2.00.459
 Humidity:55.3%
 Test Distance:2.900m [K=0.8810]
 Remarks:

Planar Illuminance Curve



C Range: 0 - 360DEG
C Interval: 22.5DEG
Test Speed: HIGH
Temperature: 25.2°C
Operators: Dano
Test Date: 2023-05-30

γ Range: 0 - 180DEG
γ Interval: 1.0DEG
Test System: EVERFINE GO-R5000_V2 SYSTEM V2.00.459
Humidity: 55.3%
Test Distance: 2.900m [K=0.8810]
Remarks:

LUMINOUS DISTRIBUTION INTENSITY DATA

Test:U:120.1V I:0.2454A P:29.24W PF:0.9922 Freq:60.01Hz Lamp Flux:1683.65x1 lm		
NAME: VN27-36-30S-952C5-MVTD-BK 4000K	TYPE:	WEIGHT:
SPEC.:	DIM.:	SERIAL No.:
MFR.: FOSHAN LEDKEY LIGHTING CO.,LTD.	SUR.:	Shielding Angle:

Table--1

UNIT: cd

C (DEG) γ (DEG)	0	22.5	45	67.5	90	112.5	135	157.5	180	202.5	225	247.5	270	292.5	315	337.5			
0	198	198	198	198	198	198	198	198	198	198	198	198	198	198	198	198			
5	198	198	198	198	198	197	197	197	197	197	197	197	198	198	198	198			
10	195	195	195	195	195	194	193	193	193	193	193	194	195	195	195	195			
15	189	189	190	191	190	189	188	186	186	187	188	190	191	191	190	190			
20	184	183	183	184	184	183	180	180	182	180	181	183	185	185	184	183			
25	188	183	176	177	177	175	172	182	187	182	173	175	177	177	175	183			
30	196	189	172	167	167	165	170	187	194	187	171	165	168	167	171	189			
35	205	196	172	156	157	154	170	193	201	193	171	155	157	157	171	196			
40	214	203	173	145	145	142	170	198	208	198	171	143	145	145	173	203			
45	221	209	174	134	132	132	171	203	213	202	171	134	132	134	175	210			
50	228	213	175	126	117	123	171	206	218	205	171	126	118	125	177	215			
55	233	217	175	118	102	115	170	209	221	206	169	117	103	117	178	220			
60	236	219	174	110	85.8	106	168	210	223	207	166	109	86.8	110	177	222			
65	239	220	171	103	68.8	98.0	165	209	223	206	162	99.9	69.9	102	176	224			
70	240	219	168	94.4	51.1	89.2	161	208	223	204	157	90.5	52.3	94.5	173	224			
75	240	218	163	86.2	33.6	80.4	156	206	222	201	151	81.0	34.7	86.7	169	224			
80	240	217	159	78.6	17.3	72.6	152	205	221	199	146	72.4	18.2	79.5	166	223			
85	242	217	157	73.7	4.74	67.9	152	207	224	200	144	66.7	5.29	74.9	164	223			
90	249	224	162	76.1	0.32	71.0	157	215	232	207	149	68.7	0.31	77.3	169	230			
95	256	230	168	81.9	1.08	75.9	162	220	238	212	153	73.1	0.61	83.3	175	237			
100	260	234	172	86.5	1.98	79.6	165	222	240	215	156	76.5	1.38	87.9	179	241			
105	260	235	174	81.2	3.30	75.6	166	222	240	216	157	75.8	2.47	78.8	181	242			
110	258	234	174	62.4	4.84	62.6	165	220	237	213	157	63.5	3.75	64.5	180	240			
115	252	230	158	51.4	6.71	49.8	156	214	231	209	151	49.1	5.22	51.2	159	235			
120	236	209	137	39.7	8.70	39.4	136	205	223	201	133	37.3	6.73	41.9	136	213			
125	206	181	113	37.4	10.7	37.0	113	179	202	177	112	32.4	8.54	39.7	113	184			
130	173	151	88.1	35.0	12.6	34.7	88.0	151	173	150	86.8	31.0	10.6	37.6	89.3	150			
135	140	120	61.2	34.5	14.4	32.6	68.7	117	142	119	68.1	29.9	12.5	35.0	67.4	120			
140	106	89.7	52.9	33.3	16.1	30.7	55.7	90.7	106	91.9	52.9	29.2	14.2	33.0	58.7	89.9			
145	76.4	67.4	48.7	31.9	18.1	28.6	49.8	66.7	80.1	69.1	49.0	29.2	16.2	29.5	51.9	66.4			
150	65.0	60.0	44.4	30.1	19.5	26.7	44.0	56.5	60.8	57.3	45.7	29.5	16.0	25.5	41.5	57.4			
155	56.4	52.5	38.6	28.1	20.0	25.2	38.3	48.6	52.4	50.8	42.2	29.5	17.7	22.3	36.9	48.2			
160	47.7	42.4	35.4	21.9	17.1	23.9	32.8	40.7	44.0	43.5	37.9	28.6	20.0	18.3	30.0	40.2			
165	39.0	35.2	28.7	14.2	15.1	22.5	28.1	33.1	35.5	35.5	32.2	26.4	17.2	13.2	18.5	32.9			
170	30.2	24.2	13.2	13.6	15.0	16.4	24.6	26.7	28.0	28.0	26.6	23.3	12.5	12.7	14.5	16.6			
175	24.3	14.1	17.3	19.1	18.5	17.1	19.7	22.6	22.8	23.1	21.7	18.4	14.7	16.4	17.0	15.5			
180	19.7	22.4	25.1	23.5	23.3	23.5	23.6	21.2	12.9	12.9	21.4	23.2	23.2	23.3	23.3	23.3			

C Range: 0 - 360DEG
 C Interval: 22.5DEG
 Test Speed: HIGH
 Temperature:25.2℃
 Operators:Dano
 Test Date:2023-05-30

γ Range: 0 - 180DEG
 γ Interval: 1.0DEG
 Test System:EVERFINE GO-R5000_V2 SYSTEM V2.00.459
 Humidity:55.3%
 Test Distance:2.900m [K=0.8810]
 Remarks: