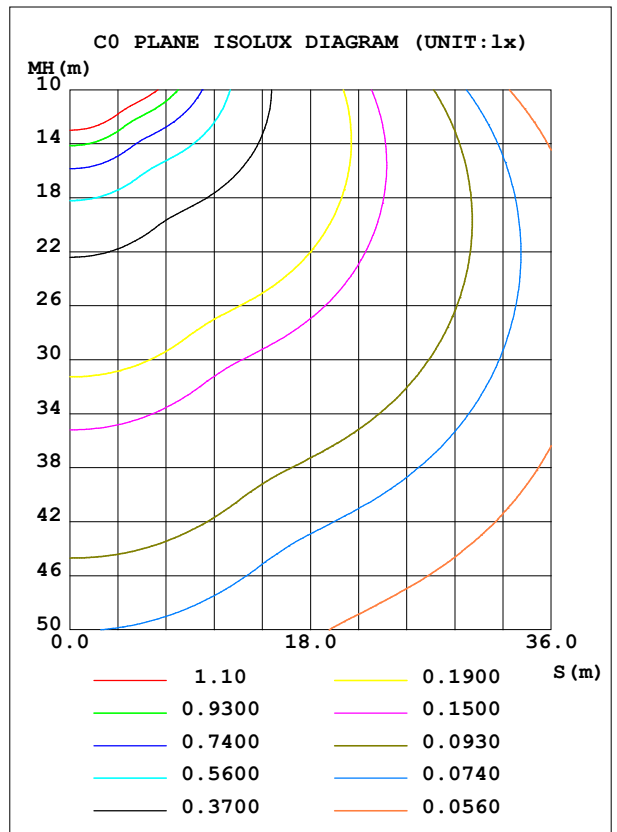
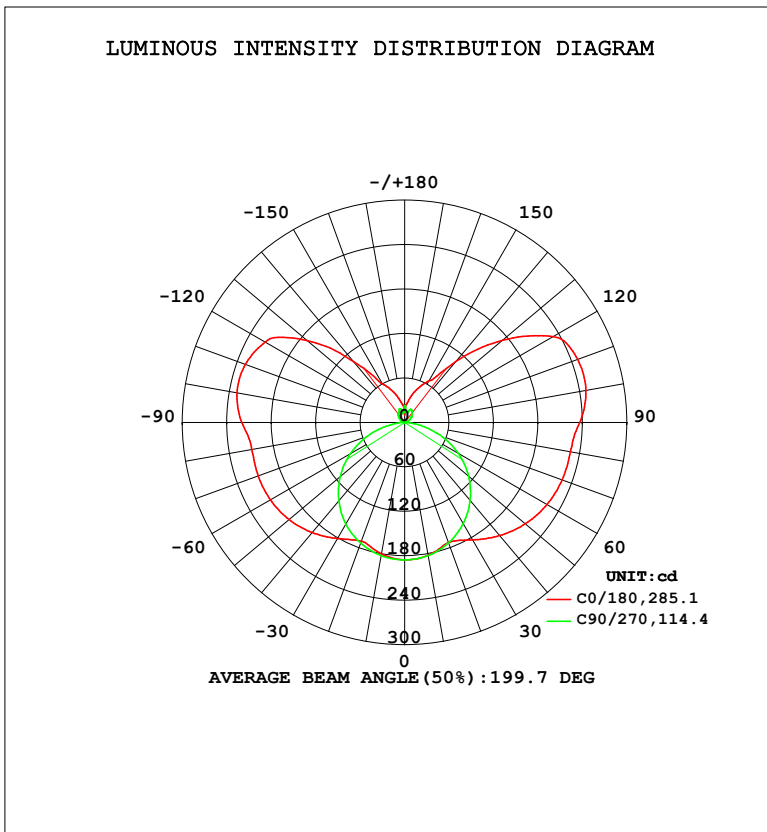


LUMINAIRE PHOTOMETRIC TEST REPORT

Test:U:120.1V I:0.2468A P:29.41W PF:0.9923 Freq:60.01Hz Lamp Flux:1609.37x1 lm		
NAME: VN27-36-30S-952C5-MVTD-BK 3500K	TYPE:	WEIGHT:
SPEC.:	DIM.:	SERIAL No.:
MFR.: FOSHAN LEDKEY LIGHTING CO.,LTD.	SUR.:	Shielding Angle:

DATA OF LAMP		PHOTOMETRIC DATA				Eff: 54.72 lm/W
MODEL		Imax (cd)	250.0	S/MH (C0/180)		1.59
NOMINAL POWER (W)		LOR (%)	100.0	S/MH (C90/270)		1.27
RATED VOLTAGE (V)	120	TOTAL FLUX (lm)	1609.4	η UP, DN (C0-180)		20.4, 29.9
NOMINAL FLUX (lm)	1609.37	CIE CLASS	DIFFUSE	η UP, DN (C180-360)		20.1, 29.6
LAMPS INSIDE	1	η up (%)	40.5	CIBSE SHR NOM		1.50
TEST VOLTAGE (V)	120	η down (%)	59.5	CIBSE SHR MAX		1.55



C Range: 0 - 360DEG
 C Interval: 22.5DEG
 Test Speed: HIGH
 Temperature: 25.2 °C
 Operators: Dano
 Test Date: 2023-05-30

γ Range: 0 - 180DEG
 γ Interval: 1.0DEG
 Test System: EVERFINE GO-R5000_V2 SYSTEM V2.00.459
 Humidity: 55.3%
 Test Distance: 2.900m [K=0.8810]
 Remarks:

ZONAL FLUX DIAGRAM

ZONAL FLUX DIAGRAM:

γ	C0	C45	C90	C135	C180	C225	C270	C315	γ	Φ zone	Φ total	%lum, lamp
10	182.2	182.5	182.5	181.8	180.2	181.3	182.5	181.9	0- 10	17.53	17.53	1.09,1.09
20	172.7	172.1	173.1	171.0	170.7	169.9	173.4	170.9	10- 20	50.04	67.57	4.2,4.2
30	183.1	161.1	157.9	159.9	181.0	160.6	158.5	160.5	20- 30	77.73	145.3	9.03,9.03
40	199.3	162.3	137.6	159.9	194.1	160.9	138.3	162.5	30- 40	103.3	248.7	15.5,15.5
50	212.8	164.6	112.8	161.0	203.8	160.9	113.6	166.0	40- 50	125.1	373.7	23.2,23.2
60	221.8	164.0	83.79	159.4	209.2	157.1	84.84	166.6	50- 60	141.1	514.9	32,32
70	226.3	159.0	51.45	153.6	210.4	149.0	52.70	163.1	60- 70	149.1	664.0	41.3,41.3
80	227.5	151.4	19.01	145.5	209.6	139.1	20.10	157.0	70- 80	148.4	812.4	50.5,50.5
90	236.2	153.0	0.3340	147.7	219.9	141.0	0.4007	161.2	80- 90	145.4	957.8	59.5,59.5
100	248.3	164.0	1.705	157.4	229.8	149.6	1.142	171.9	90-100	153.1	1111	69,69
110	248.6	167.6	4.406	159.4	228.9	151.1	3.411	173.1	100-110	152.8	1264	78.5,78.5
120	232.0	135.6	8.133	138.8	217.3	131.2	6.226	130.4	110-120	132.6	1396	86.8,86.8
130	172.6	89.42	12.04	91.72	172.3	87.38	10.09	85.34	120-130	96.85	1493	92.8,92.8
140	107.4	52.04	15.49	56.28	106.6	52.78	13.58	55.76	130-140	58.03	1551	96.4,96.4
150	64.34	43.89	18.97	44.61	60.11	45.15	15.50	39.73	140-150	31.27	1582	98.3,98.3
160	47.29	34.98	17.06	33.55	43.57	37.60	19.79	28.49	150-160	17.45	1600	99.4,99.4
170	29.89	12.89	14.68	24.86	27.64	26.39	12.28	13.96	160-170	7.634	1608	99.9,99.9
180	19.01	24.70	22.82	23.15	12.64	21.02	22.77	22.78	170-180	1.829	1609	100,100
DEG	LUMINOUS INTENSITY:cd									UNIT:lm		

Conical surface Flux(90deg): 308.78 lm

%lum = 19.2%

%lamp = 19.2%

Conical surface Flux(120deg): 514.88 lm

%lum = 32.0%

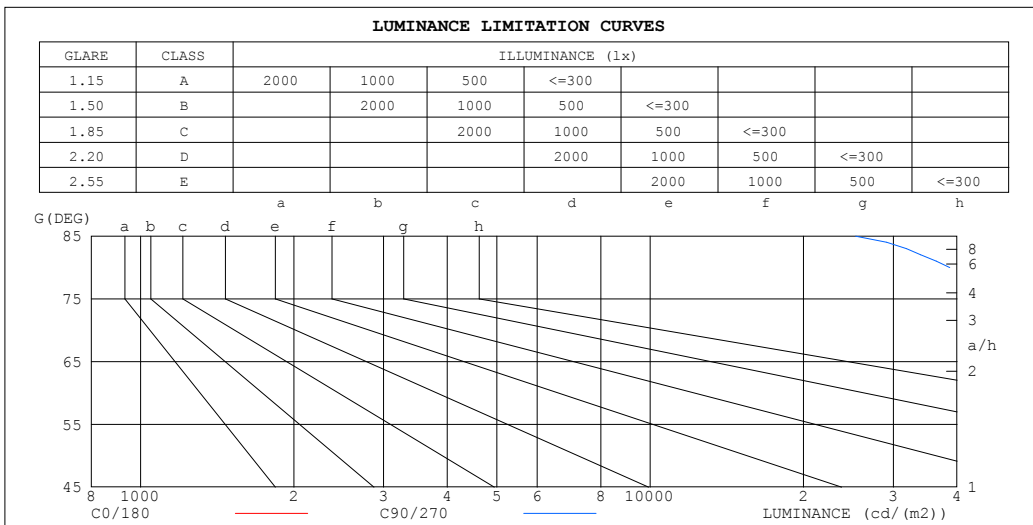
%lamp = 32.0%

C Range: 0 - 360DEG
 C Interval: 22.5DEG
 Test Speed: HIGH
 Temperature:25.2℃
 Operators:Dano
 Test Date:2023-05-30

γ Range: 0 - 180DEG
 γ Interval: 1.0DEG
 Test System:EVERFINE GO-R5000_V2 SYSTEM V2.00.459
 Humidity:55.3%
 Test Distance:2.900m [K=0.8810]
 Remarks:

LUMINANCE LIMITATION CURVES

Test:U:120.1V I:0.2468A P:29.41W PF:0.9923 Freq:60.01Hz Lamp Flux:1609.37x1 lm		
NAME: VN27-36-30S-952C5-MVTD-BK 3500K	TYPE:	WEIGHT:
SPEC.:	DIM.:	SERIAL No.:
MFR.: FOSHAN LEDKEY LIGHTING CO.,LTD.	SUR.:	Shielding Angle:



LUMINANCE cd/(m2)		
G (DEG)	C0/180	C90/270
85	931680	25307
80	463966	38692
75	310719	47527
70	234377	53161
65	188295	56803
60	157133	59226
55	134570	60851
50	117246	62010
45	103474	62824

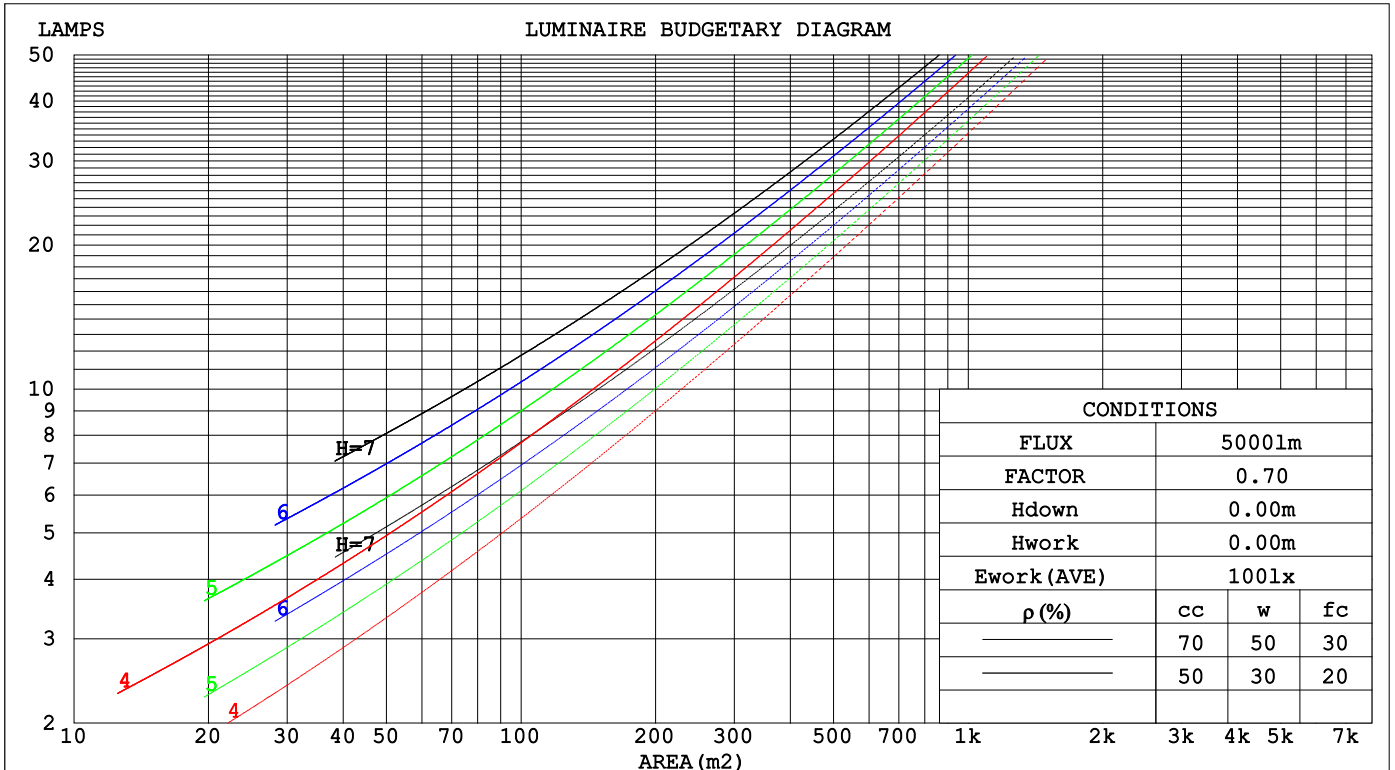
C Range: 0 - 360DEG
 C Interval: 22.5DEG
 Test Speed: HIGH
 Temperature:25.2℃
 Operators:Dano
 Test Date:2023-05-30

γ Range: 0 - 180DEG
 γ Interval: 1.0DEG
 Test System:EVERFINE GO-R5000_V2 SYSTEM V2.00.459
 Humidity:55.3%
 Test Distance:2.900m [K=0.8810]
 Remarks:

CU AND LUMINAIRE BUDGETARY ESTIMATE DIAGRAM

Test:U:120.1V I:0.2468A P:29.41W PF:0.9923 Freq:60.01Hz Lamp Flux:1609.37x1 lm		
NAME: VN27-36-30S-952C5-MVTD-BK 3500K	TYPE:	WEIGHT:
SPEC.:	DIM.:	SERIAL No.:
MFR.: FOSHAN LEDKEY LIGHTING CO.,LTD.	SUR.:	Shielding Angle:

ρcc	80%			70%			50%			30%			10%			0
ρw	50%	30%	10%	50%	30%	10%	50%	30%	10%	50%	30%	10%	50%	30%	10%	0
ρfc	20%			20%			20%			20%			20%			0
RCR	RCR:Room Cavity Ratio						Coefficients of Utilization(CU)									
0.0	1.09	1.09	1.09	1.02	1.02	1.02	.89	.89	.89	.76	.76	.76	.65	.65	.65	.60
1.0	.89	.84	.79	.83	.78	.74	.71	.67	.64	.60	.57	.55	.50	.48	.46	.41
2.0	.76	.68	.61	.70	.63	.57	.60	.54	.50	.51	.46	.43	.42	.39	.36	.31
3.0	.65	.56	.49	.61	.52	.46	.52	.45	.40	.44	.38	.34	.36	.32	.29	.25
4.0	.57	.48	.40	.53	.44	.38	.45	.38	.33	.38	.33	.28	.31	.27	.24	.20
5.0	.50	.41	.34	.47	.38	.32	.40	.33	.28	.34	.28	.24	.28	.24	.20	.17
6.0	.45	.36	.29	.42	.33	.27	.36	.29	.24	.30	.25	.20	.25	.21	.17	.14
7.0	.40	.31	.25	.37	.29	.24	.32	.26	.21	.27	.22	.18	.23	.18	.15	.12
8.0	.36	.28	.22	.34	.26	.21	.29	.23	.18	.25	.20	.16	.21	.16	.13	.11
9.0	.33	.25	.19	.31	.23	.18	.27	.20	.16	.23	.18	.14	.19	.15	.12	.10
10.0	.30	.22	.17	.28	.21	.16	.25	.19	.14	.21	.16	.12	.18	.14	.11	.09



C Range: 0 - 360DEG
 C Interval: 22.5DEG
 Test Speed: HIGH
 Temperature:25.2°C
 Operators:Dano
 Test Date:2023-05-30

γ Range: 0 - 180DEG
 γ Interval: 1.0DEG
 Test System:EVERFINE GO-R5000_V2 SYSTEM V2.00.459
 Humidity:55.3%
 Test Distance:2.900m [K=0.8810]
 Remarks:

WEC AND CCEC

Test:U:120.1V I:0.2468A P:29.41W PF:0.9923 Freq:60.01Hz Lamp Flux:1609.37x1 lm		
NAME: VN27-36-30S-952C5-MVTD-BK 3500K	TYPE:	WEIGHT:
SPEC.:	DIM.:	SERIAL No.:
MFR.: FOSHAN LEDKEY LIGHTING CO.,LTD.	SUR.:	Shielding Angle:

ρ _{cc}	80%			70%			50%			30%			10%			0
ρ _w	50%	30%	10%	50%	30%	10%	50%	30%	10%	50%	30%	10%	50%	30%	10%	0
ρ _{fc}	20%			20%			20%			20%			20%			0
RCR	RCR:Room Cavity Ratio						Wall Exitance Coefficients(WEC)									
0.0																
1.0	.403	.229	.073	.383	.219	.069	.347	.199	.064	.313	.181	.058	.282	.164	.053	
2.0	.339	.186	.057	.322	.177	.055	.288	.160	.050	.257	.144	.045	.229	.130	.041	
3.0	.297	.158	.047	.281	.151	.045	.251	.136	.041	.223	.122	.037	.196	.109	.034	
4.0	.266	.138	.041	.251	.131	.039	.223	.118	.035	.197	.106	.032	.173	.094	.029	
5.0	.240	.122	.035	.227	.116	.034	.201	.105	.031	.177	.093	.028	.155	.083	.025	
6.0	.219	.110	.031	.207	.104	.030	.183	.094	.027	.161	.084	.025	.140	.074	.022	
7.0	.202	.100	.028	.190	.095	.027	.168	.085	.025	.148	.076	.022	.129	.067	.020	
8.0	.186	.091	.026	.176	.087	.024	.156	.078	.022	.137	.069	.020	.119	.061	.018	
9.0	.173	.084	.023	.164	.080	.022	.145	.072	.020	.127	.064	.018	.110	.056	.016	
10.0	.162	.078	.022	.153	.074	.021	.135	.066	.019	.119	.059	.017	.103	.052	.015	

ρ _{cc}	80%			70%			50%			30%			10%			0
ρ _w	50%	30%	10%	50%	30%	10%	50%	30%	10%	50%	30%	10%	50%	30%	10%	0
ρ _{fc}	20%			20%			20%			20%			20%			0
RCR	RCR:Room Cavity Ratio						Ceiling Cavity Exitance Coefficients(CCEC)									
0.0																
1.0	.499	.499	.499	.426	.426	.426	.291	.291	.291	.167	.167	.167	.053	.053	.053	
2.0	.492	.445	.405	.421	.383	.350	.289	.265	.244	.166	.154	.143	.053	.050	.047	
3.0	.485	.429	.385	.415	.370	.334	.285	.257	.234	.165	.150	.138	.053	.049	.045	
4.0	.477	.418	.372	.409	.361	.323	.282	.251	.228	.163	.147	.135	.052	.048	.044	
5.0	.470	.408	.363	.403	.353	.316	.278	.247	.223	.161	.145	.132	.052	.047	.044	
6.0	.462	.401	.357	.397	.347	.311	.274	.243	.220	.159	.143	.131	.051	.047	.043	
7.0	.455	.395	.352	.392	.342	.307	.271	.240	.217	.157	.141	.129	.051	.046	.043	
8.0	.449	.389	.348	.386	.338	.304	.267	.237	.215	.156	.140	.128	.050	.046	.042	
9.0	.443	.385	.345	.381	.334	.301	.264	.235	.214	.154	.139	.128	.050	.045	.042	
10.0	.437	.381	.343	.377	.331	.300	.261	.233	.213	.152	.138	.127	.049	.045	.042	

C Range: 0 - 360DEG
 C Interval: 22.5DEG
 Test Speed: HIGH
 Temperature:25.2℃
 Operators:Dano
 Test Date:2023-05-30

γ Range: 0 - 180DEG
 γ Interval: 1.0DEG
 Test System:EVERFINE GO-R5000_V2 SYSTEM V2.00.459
 Humidity:55.3%
 Test Distance:2.900m [K=0.8810]
 Remarks:

UGR(Unified Glare Rating) Table

Test:U:120.1V I:0.2468A P:29.41W PF:0.9923 Freq:60.01Hz										
Lamp Flux:1609.37x1 lm										
NAME: VN27-36-30S-952C5-MVTD-BK 3500K					TYPE:			WEIGHT:		
SPEC.:					DIM.:			SERIAL No.:		
MFR.: FOSHAN LEDKEY LIGHTING CO.,LTD.					SUR.:			Shielding Angle:		
ceiling/cavity	0.7	0.7	0.5	0.5	0.3	0.7	0.7	0.5	0.5	0.3
walls	0.5	0.3	0.5	0.3	0.3	0.5	0.3	0.5	0.3	0.3
working plane	0.2	0.2	0.2	0.2	0.2	0.2	0.2	0.2	0.2	0.2
Room dimensions	Viewed crosswise					Viewed endwise				
x = 2H y = 2H	25.2	27.5	26.8	29.2	31.3	20.1	22.3	21.7	24.0	26.1
3H	28.7	30.7	30.3	32.4	34.6	21.6	23.7	23.3	25.4	27.6
4H	30.5	32.4	32.1	34.2	36.3	22.2	24.1	23.8	25.9	28.0
6H	32.5	34.3	34.2	36.1	38.3	22.4	24.3	24.1	26.0	28.3
8H	33.6	35.3	35.3	37.1	39.4	22.5	24.2	24.2	26.0	28.3
12H	34.8	36.5	36.6	38.3	40.6	22.4	24.1	24.2	25.9	28.2
4H 2H	25.3	27.3	27.0	29.0	31.2	22.0	23.9	23.6	25.7	27.8
3H	29.0	30.7	30.8	32.5	34.8	23.9	25.6	25.6	27.4	29.6
4H	31.1	32.6	32.8	34.4	36.7	24.6	26.2	26.4	28.0	30.3
6H	33.3	34.7	35.1	36.6	38.9	25.1	26.5	26.9	28.4	30.7
8H	34.6	35.9	36.4	37.7	40.1	25.3	26.6	27.1	28.4	30.8
12H	36.0	37.2	37.8	39.1	41.5	25.3	26.5	27.1	28.4	30.8
8H 4H	31.2	32.5	33.0	34.4	36.8	26.6	27.9	28.4	29.8	32.1
6H	33.8	34.9	35.6	36.8	39.2	27.7	28.8	29.5	30.7	33.1
8H	35.3	36.3	37.2	38.2	40.6	28.1	29.1	30.0	31.0	33.5
12H	37.0	37.9	38.9	39.9	42.3	28.4	29.3	30.3	31.2	33.7
12H 4H	31.2	32.4	33.0	34.3	36.7	27.3	28.5	29.1	30.4	32.8
6H	33.9	34.9	35.7	36.8	39.2	28.7	29.7	30.6	31.7	34.1
8H	35.5	36.4	37.4	38.3	40.8	29.4	30.3	31.3	32.3	34.7
CIE190: 2010										

CIE190: 2010
Area: 0.002827 m2

C Range: 0 - 360DEG
C Interval: 22.5DEG
Test Speed: HIGH
Temperature:25.2℃
Operators:Dano
Test Date:2023-05-30

γ Range: 0 - 180DEG
γ Interval: 1.0DEG
Test System:EVERFINE GO-R5000_V2 SYSTEM V2.00.459
Humidity:55.3%
Test Distance:2.900m [K=0.8810]
Remarks:

UTILIZATION FACTORS TABLE

Test:U:120.1V I:0.2468A P:29.41W PF:0.9923 Freq:60.01Hz Lamp Flux:1609.37x1 lm		
NAME: VN27-36-30S-952C5-MVTD-BK 3500K	TYPE:	WEIGHT:
SPEC.:	DIM.:	SERIAL No.:
MFR.: FOSHAN LEDKEY LIGHTING CO.,LTD.	SUR.:	Shielding Angle:

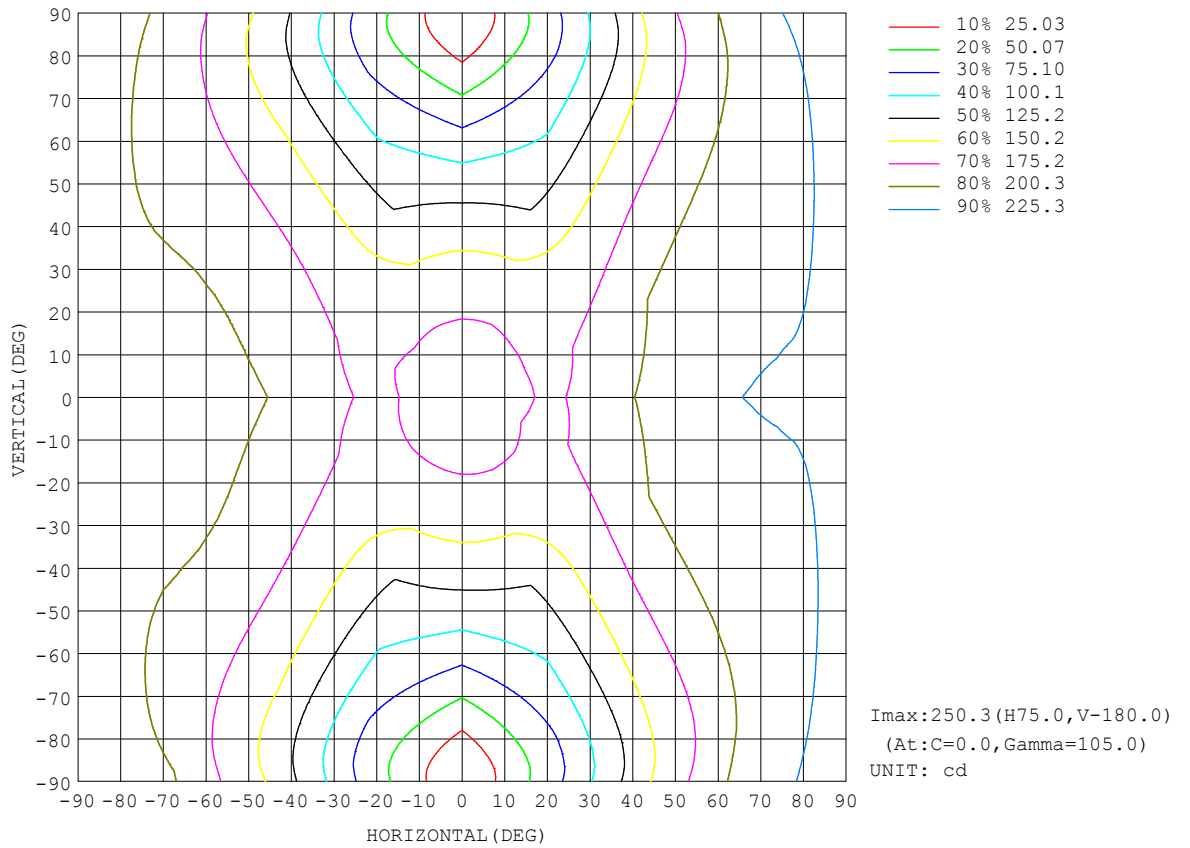
REFLECTANCE										
Ceiling	0.8	0.8	0.8	0.7	0.7	0.7	0.5	0.5	0.5	0
Walls	0.7	0.5	0.3	0.7	0.5	0.3	0.7	0.5	0.3	0
Working plane	0.2	0.2	0.2	0.2	0.2	0.2	0.2	0.2	0.2	0
ROOM INDEX	UTILIZATION FACTORS (PERCENT) $k(RI) \times RCR = 5$									
k = 0.60	39	27	19	38	26	19	35	24	18	11
0.80	48	34	26	46	33	25	41	31	24	15
1.00	55	41	32	52	39	31	47	38	29	19
1.25	62	48	39	59	46	37	52	42	34	22
1.50	67	54	44	63	51	42	56	46	39	25
2.00	75	62	53	70	59	51	62	53	46	30
2.50	80	68	59	75	64	56	65	57	51	33
3.00	84	73	65	78	69	61	68	61	55	36
4.00	89	80	72	83	75	68	72	66	60	40
5.00	92	84	77	86	79	73	75	69	64	42
ROOM INDEX	UF(total)									Direct
According to DIN EN 13032-2 2004			Suspended				SHRNOM = 1.25			

C Range: 0 - 360DEG
 C Interval: 22.5DEG
 Test Speed: HIGH
 Temperature:25.2°C
 Operators:Dano
 Test Date:2023-05-30

γ Range: 0 - 180DEG
 γ Interval: 1.0DEG
 Test System:EVERFINE GO-R5000_V2 SYSTEM V2.00.459
 Humidity:55.3%
 Test Distance:2.900m [K=0.8810]
 Remarks:

ISOCANDELA DIAGRAM

Test:U:120.1V I:0.2468A P:29.41W PF:0.9923 Freq:60.01Hz Lamp Flux:1609.37x1 lm		
NAME: VN27-36-30S-952C5-MVTD-BK 3500K	TYPE:	WEIGHT:
SPEC.:	DIM.:	SERIAL No.:
MFR.: FOSHAN LEDKEY LIGHTING CO.,LTD.	SUR.:	Shielding Angle:



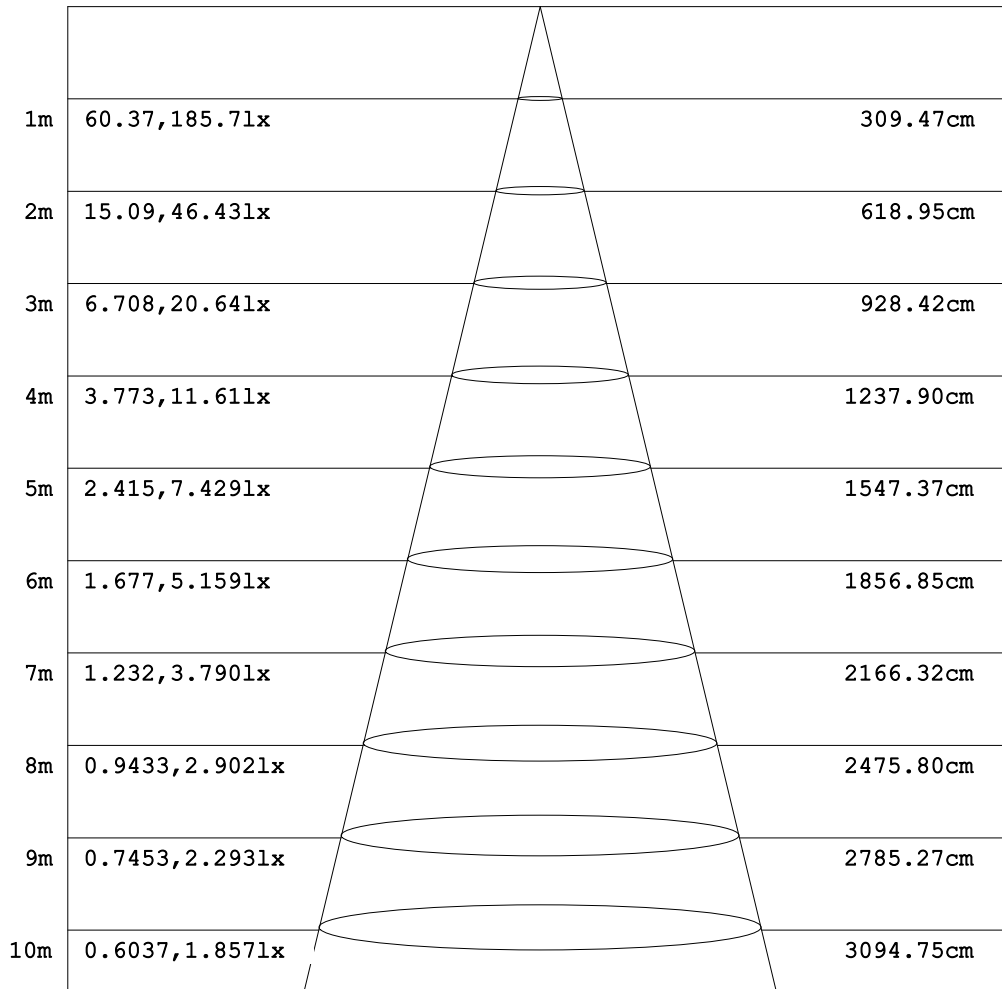
C Range: 0 - 360DEG
 C Interval: 22.5DEG
 Test Speed: HIGH
 Temperature:25.2°C
 Operators:Dano
 Test Date:2023-05-30

γ Range: 0 - 180DEG
 γ Interval: 1.0DEG
 Test System:EVERFINE GO-R5000_V2 SYSTEM V2.00.459
 Humidity:55.3%
 Test Distance:2.900m [K=0.8810]
 Remarks:

AAI Figure

Test:U:120.1V I:0.2468A P:29.41W PF:0.9923 Freq:60.01Hz Lamp Flux:1609.37x1 lm		
NAME: VN27-36-30S-952C5-MVTD-BK 3500K	TYPE:	WEIGHT:
SPEC.:	DIM.:	SERIAL No.:
MFR.: FOSHAN LEDKEY LIGHTING CO.,LTD.	SUR.:	Shielding Angle:

Flux out:485.7 lm



Angle:114.25deg

Height

Eavg, Emax

Diameter

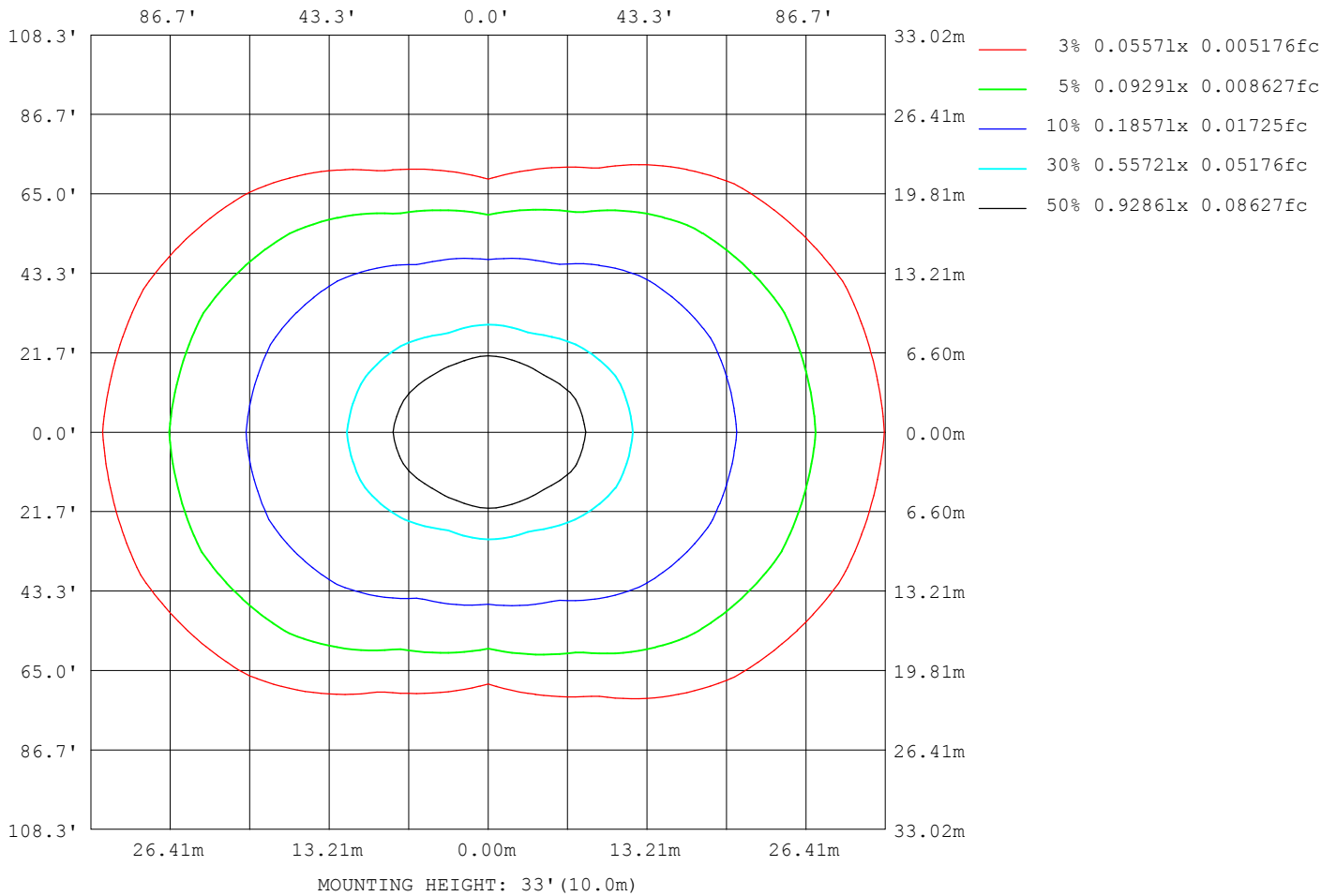
Note:The Curves indicate the illuminated area and the average illumination when the luminaire is at different distance.

C Range: 0 - 360DEG
 C Interval: 22.5DEG
 Test Speed: HIGH
 Temperature:25.2°C
 Operators:Dano
 Test Date:2023-05-30

γ Range: 0 - 180DEG
 γ Interval: 1.0DEG
 Test System:EVERFINE GO-R5000_V2 SYSTEM V2.00.459
 Humidity:55.3%
 Test Distance:2.900m [K=0.8810]
 Remarks:

ISOLUX DIAGRAM

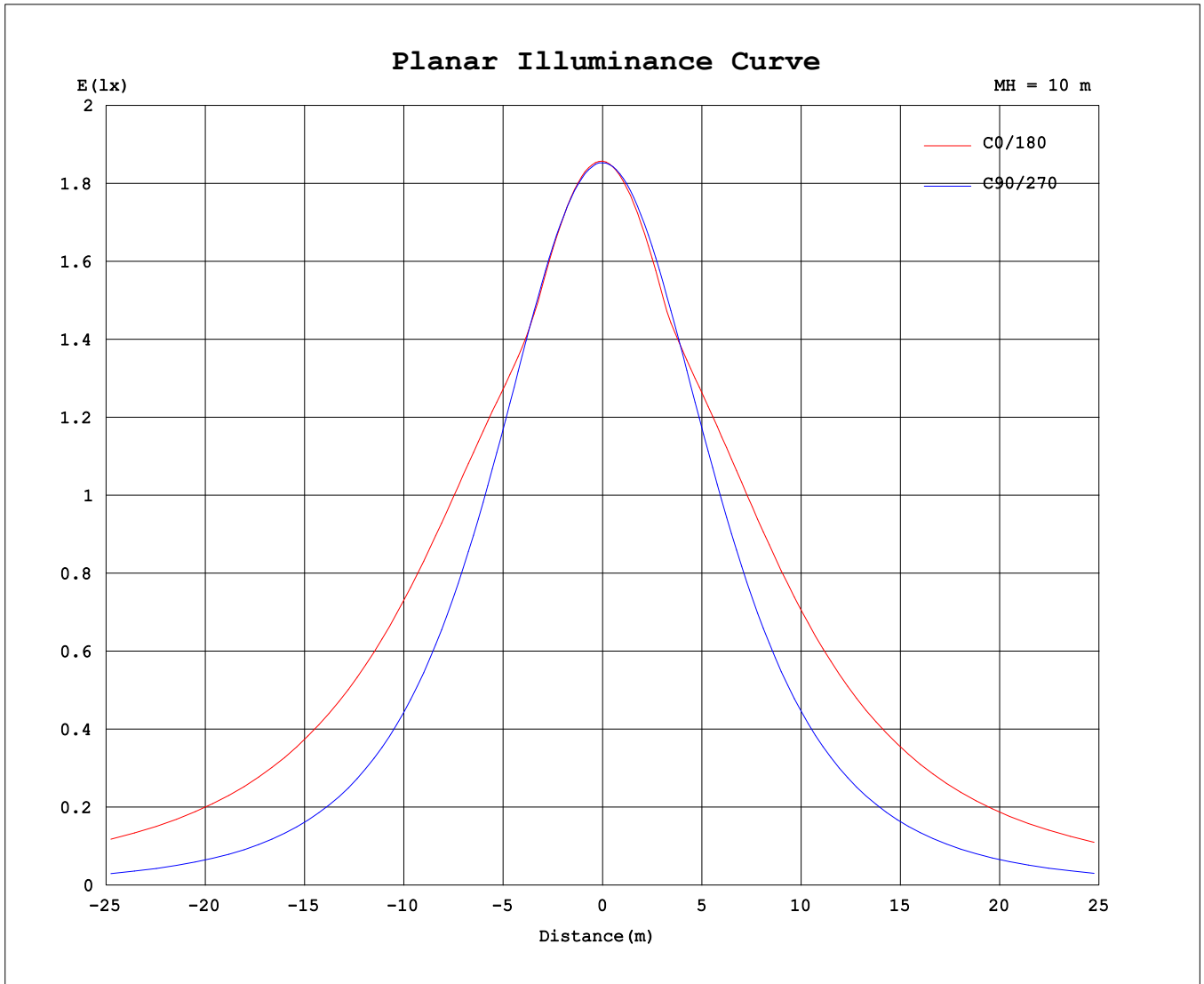
Test:U:120.1V I:0.2468A P:29.41W PF:0.9923 Freq:60.01Hz Lamp Flux:1609.37x1 lm		
NAME: VN27-36-30S-952C5-MVTD-BK 3500K	TYPE:	WEIGHT:
SPEC.:	DIM.:	SERIAL No.:
MFR.: FOSHAN LEDKEY LIGHTING CO.,LTD.	SUR.:	Shielding Angle:



C Range: 0 - 360DEG
 C Interval: 22.5DEG
 Test Speed: HIGH
 Temperature:25.2°C
 Operators:Dano
 Test Date:2023-05-30

γ Range: 0 - 180DEG
 γ Interval: 1.0DEG
 Test System:EVERFINE GO-R5000_V2 SYSTEM V2.00.459
 Humidity:55.3%
 Test Distance:2.900m [K=0.8810]
 Remarks:

Planar Illuminance Curve



C Range: 0 - 360DEG
C Interval: 22.5DEG
Test Speed: HIGH
Temperature:25.2℃
Operators:Dano
Test Date:2023-05-30

γ Range: 0 - 180DEG
γ Interval: 1.0DEG
Test System:EVERFINE GO-R5000_V2 SYSTEM V2.00.459
Humidity:55.3%
Test Distance:2.900m [K=0.8810]
Remarks:

LUMINOUS DISTRIBUTION INTENSITY DATA

Test:U:120.1V I:0.2468A P:29.41W PF:0.9923 Freq:60.01Hz Lamp Flux:1609.37x1 lm		
NAME: VN27-36-30S-952C5-MVTD-BK 3500K	TYPE:	WEIGHT:
SPEC.:	DIM.:	SERIAL No.:
MFR.: FOSHAN LEDKEY LIGHTING CO.,LTD.	SUR.:	Shielding Angle:

Table--1

UNIT: cd

C (DEG) \ γ (DEG)	0	22.5	45	67.5	90	112.5	135	157.5	180	202.5	225	247.5	270	292.5	315	337.5			
0	185	185	185	185	185	185	185	185	185	185	185	185	185	185	185	185			
5	185	184	185	185	185	184	185	184	184	185	184	185	185	185	185	185			
10	182	181	182	182	183	182	182	181	180	182	181	182	182	183	182	182			
15	177	175	178	179	179	178	177	176	175	177	176	178	179	179	177	177			
20	173	170	172	173	173	172	171	170	171	171	170	172	173	173	171	171			
25	176	173	165	166	166	164	163	170	175	170	163	165	167	166	164	172			
30	183	179	161	158	158	156	160	174	181	173	161	156	159	158	160	178			
35	191	185	161	148	148	146	159	179	188	178	160	146	149	148	161	185			
40	199	191	162	137	138	135	160	185	194	183	161	136	138	138	163	191			
45	207	197	164	127	126	125	161	189	199	188	161	127	126	127	165	197			
50	213	201	165	119	113	117	161	193	204	191	161	119	114	119	166	202			
55	218	204	165	112	98.8	109	161	196	207	193	159	112	99.7	112	167	206			
60	222	206	164	105	83.8	102	159	197	209	194	157	104	84.8	105	167	210			
65	225	207	162	98.2	67.9	94.0	157	198	210	194	154	95.9	69.0	98.0	165	211			
70	226	207	159	90.7	51.4	85.9	154	197	210	193	149	87.3	52.7	91.0	163	212			
75	227	206	155	83.0	34.8	77.6	149	196	210	191	144	78.4	36.1	83.6	160	212			
80	227	205	151	75.7	19.0	70.0	146	194	210	189	139	70.0	20.1	76.7	157	211			
85	229	207	149	70.4	6.24	65.0	143	195	212	189	137	63.9	6.95	71.7	156	213			
90	236	215	153	71.3	0.33	66.9	148	202	220	193	141	64.6	0.40	72.6	161	220			
95	244	221	159	77.1	0.91	71.9	153	208	226	200	146	69.0	0.49	78.6	168	226			
100	248	225	164	82.0	1.70	75.7	157	212	230	205	150	72.6	1.14	83.5	172	231			
105	250	226	167	79.7	2.94	74.2	159	214	231	207	151	74.0	2.18	77.9	174	232			
110	249	224	168	64.0	4.41	63.2	159	213	229	206	151	63.5	3.41	64.6	173	231			
115	244	219	156	50.5	6.18	49.7	156	209	224	204	148	49.2	4.87	51.8	152	226			
120	232	195	136	39.8	8.13	39.0	139	203	217	199	131	37.6	6.23	41.0	130	205			
125	204	168	113	36.5	10.1	36.1	118	183	200	185	111	31.5	8.04	39.0	109	178			
130	173	138	89.4	33.5	12.0	34.0	91.7	156	172	160	87.4	30.3	10.1	36.9	85.3	144			
135	140	108	62.5	33.7	13.8	32.0	73.1	126	142	133	68.8	29.2	11.9	34.1	64.5	115			
140	107	79.6	52.0	32.6	15.5	30.2	56.3	95.7	107	101	52.8	28.6	13.6	32.5	55.8	85.1			
145	77.3	63.8	48.0	31.3	17.5	28.2	50.4	71.7	80.8	78.6	48.4	28.6	15.6	29.1	49.8	64.0			
150	64.3	56.5	43.9	29.6	19.0	26.2	44.6	57.5	60.1	59.3	45.1	29.0	15.5	25.0	39.7	55.1			
155	55.9	48.5	37.9	27.6	19.7	24.8	39.0	49.7	51.9	52.8	41.8	29.0	17.3	21.9	35.1	45.9			
160	47.3	39.4	35.0	22.1	17.1	23.5	33.6	41.9	43.6	46.0	37.6	28.2	19.8	18.4	28.5	36.7			
165	38.6	31.7	28.9	14.2	14.8	22.1	28.5	34.3	35.2	38.4	31.9	26.1	17.2	13.0	16.3	31.2			
170	29.9	20.9	12.9	13.3	14.7	16.1	24.9	27.5	27.6	30.3	26.4	23.1	12.3	12.5	14.0	15.7			
175	23.9	12.8	16.7	18.4	17.8	16.7	20.8	23.1	22.7	24.4	21.7	18.0	13.9	15.5	17.7	16.0			
180	19.0	29.6	24.7	23.2	22.8	26.2	23.1	18.2	12.6	18.0	21.0	22.8	22.8	22.8	22.8	22.8			

C Range: 0 - 360DEG
 C Interval: 22.5DEG
 Test Speed: HIGH
 Temperature:25.2℃
 Operators:Dano
 Test Date:2023-05-30

γ Range: 0 - 180DEG
 γ Interval: 1.0DEG
 Test System:EVERFINE GO-R5000_V2 SYSTEM V2.00.459
 Humidity:55.3%
 Test Distance:2.900m [K=0.8810]
 Remarks: