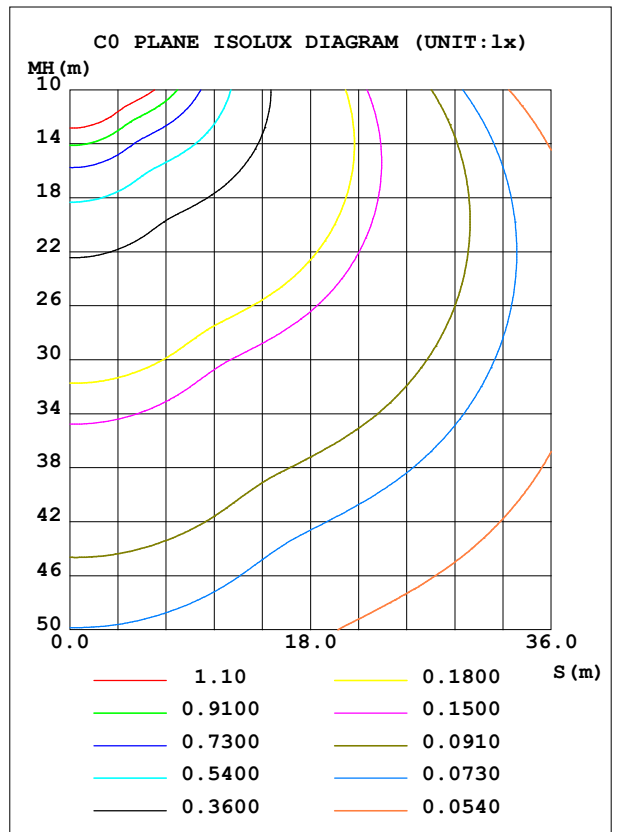
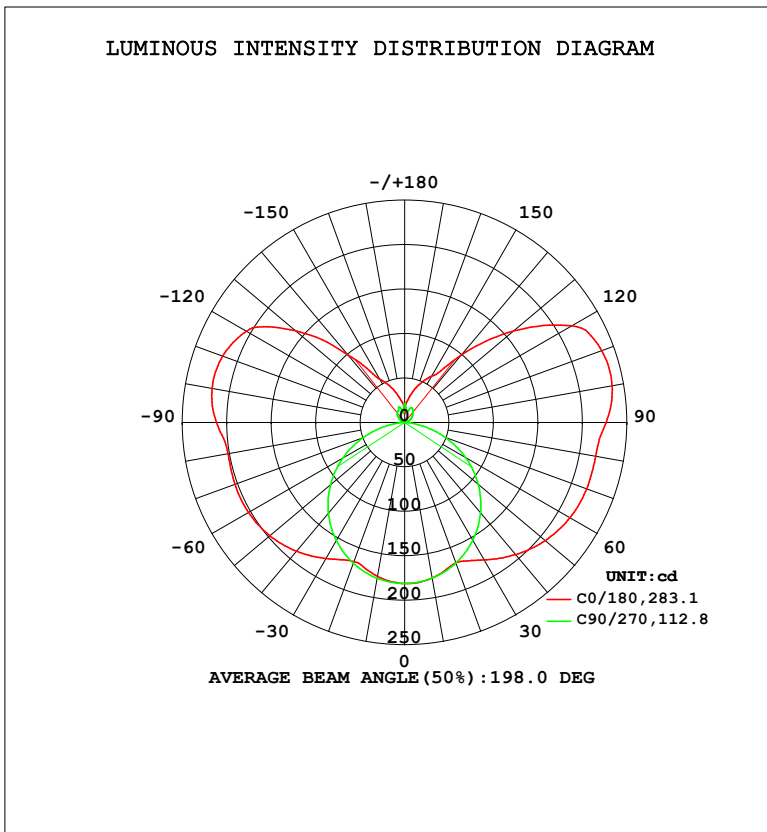


LUMINAIRE PHOTOMETRIC TEST REPORT

Test:U:120.0V I:0.2457A P:29.25W PF:0.9922 Freq:60.01Hz Lamp Flux:1540.19x1 lm		
NAME: VN27-36-30S-952C5-MVTD-BK 3000K	TYPE:	WEIGHT:
SPEC.:	DIM.:	SERIAL No.:
MFR.: FOSHAN LEDKEY LIGHTING CO.,LTD.	SUR.:	Shielding Angle:

DATA OF LAMP		PHOTOMETRIC DATA				Eff: 52.65 lm/W
MODEL		Imax (cd)	238.0	S/MH (C0/180)		1.58
NOMINAL POWER (W)		LOR (%)	100.0	S/MH (C90/270)		1.26
RATED VOLTAGE (V)	120	TOTAL FLUX (lm)	1540.2	$\eta$ UP, DN (C0-180)		20.0, 30.1
NOMINAL FLUX (lm)	1540.19	CIE CLASS	SEMI-D.	$\eta$ UP, DN (C180-360)		20.0, 29.9
LAMPS INSIDE	1	$\eta$ up (%)	40.0	CIBSE SHR NOM		1.50
TEST VOLTAGE (V)	120	$\eta$ down (%)	60.0	CIBSE SHR MAX		1.55



C Range: 0 - 360DEG  
 C Interval: 22.5DEG  
 Test Speed: HIGH  
 Temperature: 25.2°C  
 Operators: Dano  
 Test Date: 2023-05-30

$\gamma$  Range: 0 - 180DEG  
 $\gamma$  Interval: 1.0DEG  
 Test System: EVERFINE GO-R5000\_V2 SYSTEM V2.00.459  
 Humidity: 55.3%  
 Test Distance: 2.900m [K=0.8810]  
 Remarks:

ZONAL FLUX DIAGRAM

ZONAL FLUX DIAGRAM:

γ	C0	C45	C90	C135	C180	C225	C270	C315	γ	Φ zone	Φ total	%lum,lamp
10	177.8	178.1	177.8	176.5	175.8	176.8	178.0	178.1	0- 10	17.11	17.11	1.11,1.11
20	168.3	167.7	168.4	164.9	166.6	165.3	168.7	167.8	10- 20	48.74	65.85	4.28,4.28
30	178.6	156.6	153.3	155.3	176.7	156.2	153.6	156.3	20- 30	75.64	141.5	9.19,9.19
40	194.0	157.6	132.9	155.7	189.2	156.3	133.5	157.6	30- 40	100.4	241.9	15.7,15.7
50	206.6	159.2	108.0	156.2	198.2	155.6	108.9	160.8	40- 50	121.2	363.1	23.6,23.6
60	214.6	158.0	79.32	153.7	202.8	151.4	80.40	161.3	50- 60	136.3	499.4	32.4,32.4
70	217.9	152.5	47.77	147.0	203.2	142.9	48.93	157.6	60- 70	143.4	642.8	41.7,41.7
80	218.3	144.7	16.59	139.1	201.9	133.2	17.59	151.2	70- 80	142.1	784.9	51,51
90	226.7	146.6	0.2687	143.7	211.7	135.5	0.3183	153.8	80- 90	139.5	924.4	60,60
100	236.9	156.3	1.718	151.2	220.0	142.8	1.194	163.7	90-100	146.8	1071	69.5,69.5
110	235.9	158.7	4.334	151.3	217.9	143.5	3.386	165.1	100-110	145.3	1216	79,79
120	217.3	126.0	7.877	125.7	205.5	122.6	6.076	123.9	110-120	125.2	1342	87.1,87.1
130	160.2	82.42	11.51	81.38	160.7	80.65	9.706	83.55	120-130	90.42	1432	93,93
140	98.79	48.68	14.72	51.40	98.78	48.93	12.96	54.81	130-140	53.82	1486	96.5,96.5
150	60.06	40.98	17.91	40.55	56.21	42.19	14.65	38.81	140-150	29.12	1515	98.4,98.4
160	44.07	32.63	15.81	30.26	40.77	35.10	18.54	27.83	150-160	16.32	1531	99.4,99.4
170	27.88	12.26	13.76	22.71	25.89	24.66	10.35	13.59	160-170	7.147	1538	99.9,99.9
180	18.85	23.09	21.44	21.73	11.88	19.85	21.46	21.45	170-180	1.706	1540	100,100
DEG	LUMINOUS INTENSITY:cd									UNIT:lm		

Conical surface Flux(90deg): 300.21 lm

%lum = 19.5%

%lamp = 19.5%

Conical surface Flux(120deg): 499.43 lm

%lum = 32.4%

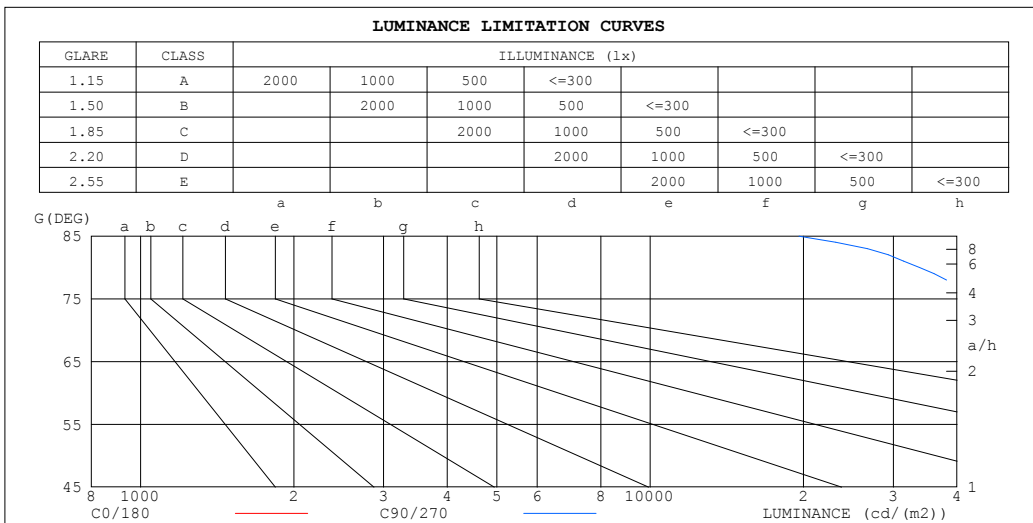
%lamp = 32.4%

C Range: 0 - 360DEG  
 C Interval: 22.5DEG  
 Test Speed: HIGH  
 Temperature:25.2℃  
 Operators:Dano  
 Test Date:2023-05-30

γ Range: 0 - 180DEG  
 γ Interval: 1.0DEG  
 Test System:EVERFINE GO-R5000\_V2 SYSTEM V2.00.459  
 Humidity:55.3%  
 Test Distance:2.900m [K=0.8810]  
 Remarks:

LUMINANCE LIMITATION CURVES

Test:U:120.0V I:0.2457A P:29.25W PF:0.9922 Freq:60.01Hz Lamp Flux:1540.19x1 lm		
NAME: VN27-36-30S-952C5-MVTD-BK 3000K	TYPE:	WEIGHT:
SPEC.:	DIM.:	SERIAL No.:
MFR.: FOSHAN LEDKEY LIGHTING CO.,LTD.	SUR.:	Shielding Angle:



LUMINANCE cd/(m2)		
G (DEG)	C0/180	C90/270
85	892780	19595
80	445051	33803
75	298410	43281
70	225599	49414
65	181682	53455
60	151966	56128
55	130357	58058
50	113822	59472
45	100559	60537

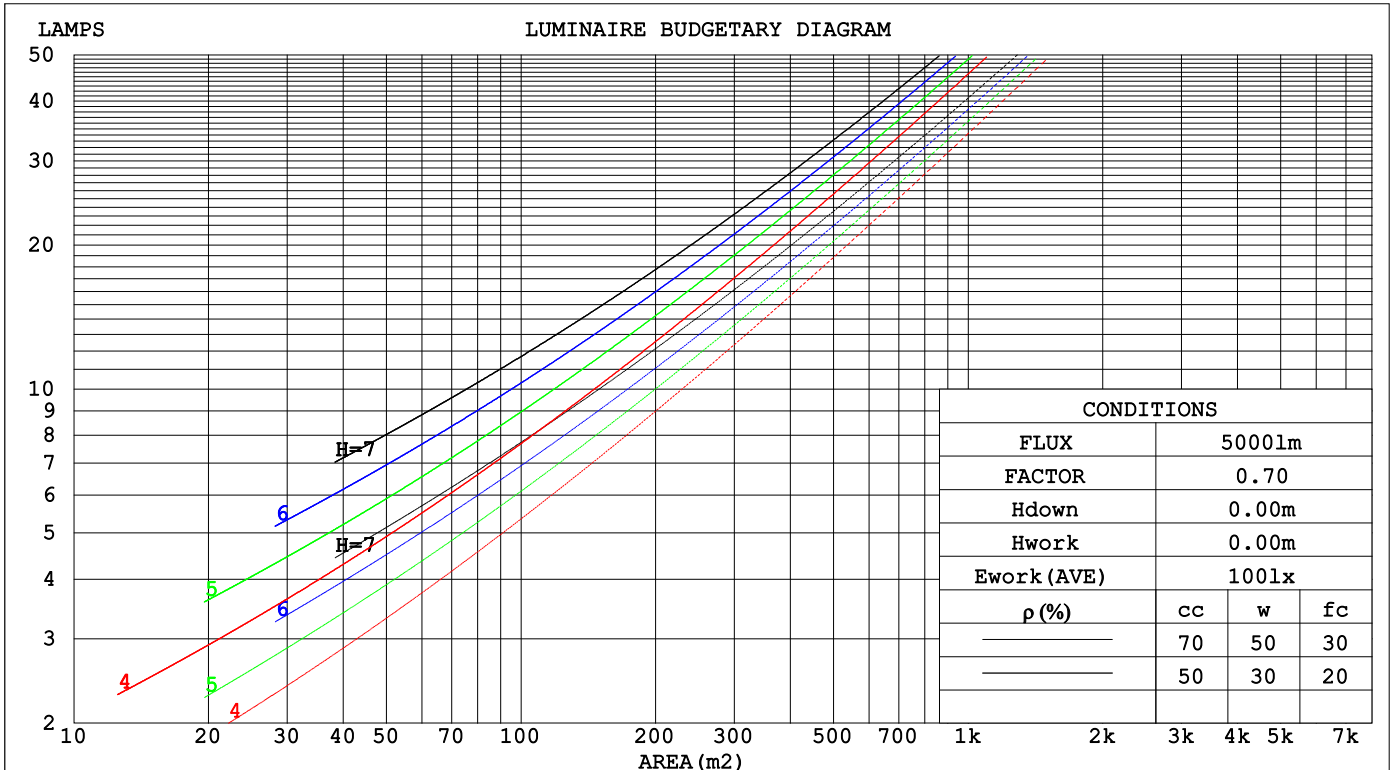
C Range: 0 - 360DEG  
 C Interval: 22.5DEG  
 Test Speed: HIGH  
 Temperature:25.2℃  
 Operators:Dano  
 Test Date:2023-05-30

γ Range: 0 - 180DEG  
 γ Interval: 1.0DEG  
 Test System:EVERFINE GO-R5000\_V2 SYSTEM V2.00.459  
 Humidity:55.3%  
 Test Distance:2.900m [K=0.8810]  
 Remarks:

**CU AND LUMINAIRE BUDGETARY ESTIMATE DIAGRAM**

Test:U:120.0V I:0.2457A P:29.25W PF:0.9922 Freq:60.01Hz Lamp Flux:1540.19x1 lm		
NAME: VN27-36-30S-952C5-MVTD-BK 3000K	TYPE:	WEIGHT:
SPEC.:	DIM.:	SERIAL No.:
MFR.: FOSHAN LEDKEY LIGHTING CO.,LTD.	SUR.:	Shielding Angle:

ρcc	80%			70%			50%			30%			10%			0
ρw	50%	30%	10%	50%	30%	10%	50%	30%	10%	50%	30%	10%	50%	30%	10%	0
ρfc	20%			20%			20%			20%			20%			0
RCR	RCR:Room Cavity Ratio						Coefficients of Utilization(CU)									
0.0	1.10	1.10	1.10	1.02	1.02	1.02	.89	.89	.89	.77	.77	.77	.65	.65	.65	.60
1.0	.89	.84	.79	.83	.78	.74	.71	.68	.64	.61	.58	.55	.51	.49	.47	.42
2.0	.76	.68	.61	.70	.63	.57	.60	.55	.50	.51	.47	.43	.42	.39	.36	.32
3.0	.65	.56	.49	.61	.53	.46	.52	.45	.40	.44	.39	.34	.36	.32	.29	.25
4.0	.57	.48	.40	.53	.45	.38	.45	.39	.33	.38	.33	.29	.32	.28	.24	.20
5.0	.50	.41	.34	.47	.38	.32	.40	.33	.28	.34	.28	.24	.28	.24	.20	.17
6.0	.45	.36	.29	.42	.33	.27	.36	.29	.24	.30	.25	.21	.25	.21	.17	.14
7.0	.40	.31	.25	.38	.29	.24	.32	.26	.21	.28	.22	.18	.23	.19	.15	.12
8.0	.36	.28	.22	.34	.26	.21	.29	.23	.18	.25	.20	.16	.21	.17	.13	.11
9.0	.33	.25	.19	.31	.23	.18	.27	.21	.16	.23	.18	.14	.19	.15	.12	.10
10.0	.30	.23	.17	.28	.21	.16	.25	.19	.14	.21	.16	.13	.18	.14	.11	.09



C Range: 0 - 360DEG  
 C Interval: 22.5DEG  
 Test Speed: HIGH  
 Temperature:25.2°C  
 Operators:Dano  
 Test Date:2023-05-30

γ Range: 0 - 180DEG  
 γ Interval: 1.0DEG  
 Test System:EVERFINE GO-R5000\_V2 SYSTEM V2.00.459  
 Humidity:55.3%  
 Test Distance:2.900m [K=0.8810]  
 Remarks:

WEC AND CCEC

Test:U:120.0V I:0.2457A P:29.25W PF:0.9922 Freq:60.01Hz Lamp Flux:1540.19x1 lm		
NAME: VN27-36-30S-952C5-MVTD-BK 3000K	TYPE:	WEIGHT:
SPEC.:	DIM.:	SERIAL No.:
MFR.: FOSHAN LEDKEY LIGHTING CO.,LTD.	SUR.:	Shielding Angle:

ρcc	80%			70%			50%			30%			10%			0
ρw	50%	30%	10%	50%	30%	10%	50%	30%	10%	50%	30%	10%	50%	30%	10%	0
ρfc	20%			20%			20%			20%			20%			0
RCR	RCR:Room Cavity Ratio						Wall Exitance Coefficients(WEC)									
0.0																
1.0	.403	.229	.073	.384	.219	.070	.347	.199	.064	.314	.181	.058	.283	.164	.053	
2.0	.340	.186	.057	.322	.177	.055	.289	.161	.050	.258	.145	.045	.230	.130	.041	
3.0	.298	.158	.047	.282	.151	.045	.251	.136	.041	.223	.122	.038	.197	.109	.034	
4.0	.266	.138	.041	.251	.131	.039	.223	.118	.035	.198	.106	.032	.174	.094	.029	
5.0	.240	.122	.035	.227	.116	.034	.201	.105	.031	.178	.094	.028	.156	.083	.025	
6.0	.219	.110	.031	.207	.105	.030	.184	.094	.027	.162	.084	.025	.141	.074	.022	
7.0	.202	.100	.028	.190	.095	.027	.169	.085	.025	.148	.076	.022	.129	.067	.020	
8.0	.187	.091	.026	.176	.087	.025	.156	.078	.022	.137	.070	.020	.120	.061	.018	
9.0	.174	.084	.023	.164	.080	.022	.145	.072	.020	.128	.064	.018	.111	.056	.016	
10.0	.162	.078	.022	.153	.074	.021	.136	.066	.019	.119	.059	.017	.104	.052	.015	

ρcc	80%			70%			50%			30%			10%			0
ρw	50%	30%	10%	50%	30%	10%	50%	30%	10%	50%	30%	10%	50%	30%	10%	0
ρfc	20%			20%			20%			20%			20%			0
RCR	RCR:Room Cavity Ratio						Ceiling Cavity Exitance Coefficients(CCEC)									
0.0	.495	.495	.495	.423	.423	.423	.289	.289	.289	.166	.166	.166	.053	.053	.053	
1.0	.494	.462	.434	.423	.397	.374	.289	.273	.258	.166	.158	.150	.053	.051	.049	
2.0	.488	.441	.401	.418	.380	.347	.286	.263	.242	.165	.153	.142	.053	.049	.046	
3.0	.481	.425	.381	.412	.367	.331	.283	.255	.232	.163	.149	.137	.053	.048	.045	
4.0	.473	.414	.368	.406	.357	.320	.279	.249	.225	.162	.146	.133	.052	.047	.044	
5.0	.466	.404	.359	.400	.350	.312	.275	.244	.221	.160	.143	.131	.051	.047	.043	
6.0	.458	.397	.353	.394	.344	.307	.272	.241	.217	.158	.142	.129	.051	.046	.043	
7.0	.452	.391	.348	.388	.339	.303	.268	.237	.215	.156	.140	.128	.050	.046	.042	
8.0	.445	.385	.344	.383	.334	.300	.265	.235	.213	.154	.138	.127	.050	.045	.042	
9.0	.439	.381	.341	.378	.330	.298	.262	.232	.211	.153	.137	.126	.049	.045	.042	
10.0	.433	.377	.339	.373	.327	.296	.259	.230	.210	.151	.136	.126	.049	.045	.042	

C Range: 0 - 360DEG  
 C Interval: 22.5DEG  
 Test Speed: HIGH  
 Temperature:25.2℃  
 Operators:Dano  
 Test Date:2023-05-30

γ Range: 0 - 180DEG  
 γ Interval: 1.0DEG  
 Test System:EVERFINE GO-R5000\_V2 SYSTEM V2.00.459  
 Humidity:55.3%  
 Test Distance:2.900m [K=0.8810]  
 Remarks:

UGR(Unified Glare Rating) Table

Test:U:120.0V I:0.2457A P:29.25W PF:0.9922 Freq:60.01Hz Lamp Flux:1540.19x1 lm		
NAME: VN27-36-30S-952C5-MVTD-BK 3000K	TYPE:	WEIGHT:
SPEC.:	DIM.:	SERIAL No.:
MFR.: FOSHAN LEDKEY LIGHTING CO.,LTD.	SUR.:	Shielding Angle:

ceiling/cavity	0.7	0.7	0.5	0.5	0.3	0.7	0.7	0.5	0.5	0.3
walls	0.5	0.3	0.5	0.3	0.3	0.5	0.3	0.5	0.3	0.3
working plane	0.2	0.2	0.2	0.2	0.2	0.2	0.2	0.2	0.2	0.2

Room dimensions		Viewed crosswise					Viewed endwise				
x = 2H	y = 2H	25.2	27.4	26.8	29.1	31.2	19.9	22.2	21.5	23.9	25.9
	3H	28.6	30.6	30.2	32.3	34.5	21.5	23.6	23.1	25.3	27.4
	4H	30.4	32.3	32.0	34.1	36.2	22.0	23.9	23.6	25.7	27.8
	6H	32.4	34.2	34.1	36.0	38.2	22.2	24.1	23.9	25.8	28.0
	8H	33.5	35.2	35.2	37.0	39.2	22.2	24.0	23.9	25.8	28.0
	12H	34.7	36.4	36.5	38.2	40.5	22.2	23.9	23.9	25.7	27.9
4H	2H	25.2	27.2	26.9	28.9	31.1	21.8	23.8	23.5	25.5	27.7
	3H	28.9	30.7	30.7	32.4	34.7	23.7	25.5	25.5	27.2	29.5
	4H	31.0	32.6	32.7	34.3	36.6	24.5	26.1	26.2	27.9	30.1
	6H	33.2	34.6	35.0	36.5	38.8	25.0	26.4	26.7	28.2	30.5
	8H	34.5	35.8	36.3	37.6	40.0	25.1	26.4	26.9	28.2	30.6
	12H	35.9	37.1	37.7	39.0	41.4	25.1	26.3	26.9	28.2	30.5
8H	4H	31.1	32.4	32.9	34.3	36.6	26.5	27.8	28.3	29.6	32.0
	6H	33.7	34.8	35.5	36.7	39.1	27.5	28.7	29.4	30.6	32.9
	8H	35.2	36.2	37.0	38.1	40.5	28.0	29.0	29.8	30.9	33.3
	12H	36.9	37.8	38.8	39.7	42.2	28.2	29.1	30.1	31.0	33.5
12H	4H	31.1	32.3	32.9	34.2	36.5	27.2	28.4	29.0	30.3	32.6
	6H	33.7	34.8	35.6	36.7	39.1	28.6	29.6	30.5	31.5	33.9
	8H	35.4	36.3	37.2	38.2	40.6	29.3	30.2	31.2	32.1	34.6

CIE190: 2010										

CIE190: 2010  
Area: 0.002827 m2

C Range: 0 - 360DEG  
C Interval: 22.5DEG  
Test Speed: HIGH  
Temperature:25.2℃  
Operators:Dano  
Test Date:2023-05-30

γ Range: 0 - 180DEG  
γ Interval: 1.0DEG  
Test System:EVERFINE GO-R5000\_V2 SYSTEM V2.00.459  
Humidity:55.3%  
Test Distance:2.900m [K=0.8810]  
Remarks:

**UTILIZATION FACTORS TABLE**

Test:U:120.0V I:0.2457A P:29.25W PF:0.9922 Freq:60.01Hz Lamp Flux:1540.19x1 lm		
NAME: VN27-36-30S-952C5-MVTD-BK 3000K	TYPE:	WEIGHT:
SPEC.:	DIM.:	SERIAL No.:
MFR.: FOSHAN LEDKEY LIGHTING CO.,LTD.	SUR.:	Shielding Angle:

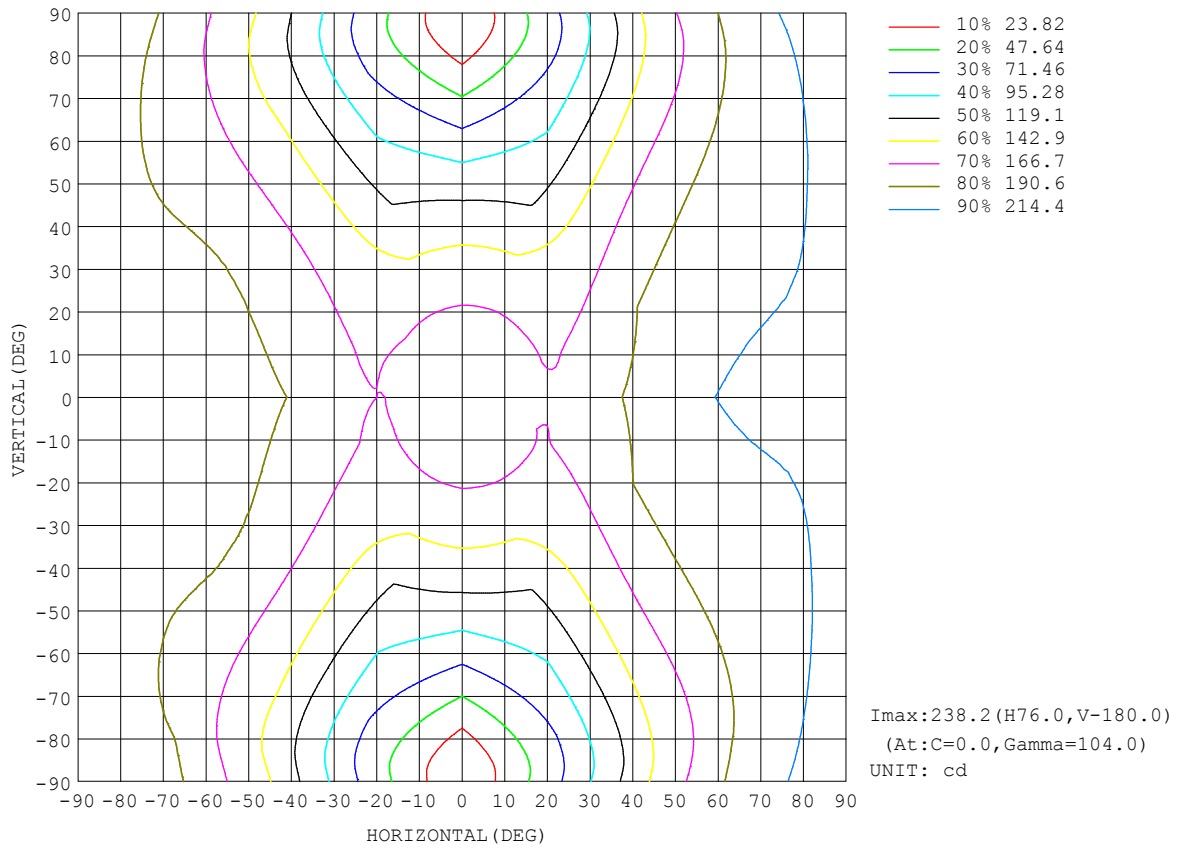
REFLECTANCE										
Ceiling	0.8	0.8	0.8	0.7	0.7	0.7	0.5	0.5	0.5	0
Walls	0.7	0.5	0.3	0.7	0.5	0.3	0.7	0.5	0.3	0
Working plane	0.2	0.2	0.2	0.2	0.2	0.2	0.2	0.2	0.2	0
ROOM INDEX	UTILIZATION FACTORS (PERCENT) $k(RI) \times RCR = 5$									
k = 0.60	39	27	19	38	26	19	35	24	18	11
0.80	48	34	26	46	33	25	42	31	24	15
1.00	55	41	32	53	40	31	47	39	29	19
1.25	62	48	39	59	46	38	52	42	35	23
1.50	67	54	44	64	51	43	56	46	39	25
2.00	75	63	53	70	59	51	62	53	46	30
2.50	80	68	59	75	65	56	66	57	51	33
3.00	84	73	65	79	69	61	69	61	55	36
4.00	89	80	72	83	75	68	73	66	61	40
5.00	92	84	77	86	79	73	75	70	65	43
ROOM INDEX	UF(total)									Direct
According to DIN EN 13032-2 2004			Suspended				SHRNOM = 1.25			

C Range: 0 - 360DEG  
 C Interval: 22.5DEG  
 Test Speed: HIGH  
 Temperature:25.2°C  
 Operators:Dano  
 Test Date:2023-05-30

$\gamma$  Range: 0 - 180DEG  
 $\gamma$  Interval: 1.0DEG  
 Test System:EVERFINE GO-R5000\_V2 SYSTEM V2.00.459  
 Humidity:55.3%  
 Test Distance:2.900m [K=0.8810]  
 Remarks:

ISOCANDELA DIAGRAM

Test:U:120.0V I:0.2457A P:29.25W PF:0.9922 Freq:60.01Hz Lamp Flux:1540.19x1 lm		
NAME: VN27-36-30S-952C5-MVTD-BK 3000K	TYPE:	WEIGHT:
SPEC.:	DIM.:	SERIAL No.:
MFR.: FOSHAN LEDKEY LIGHTING CO.,LTD.	SUR.:	Shielding Angle:



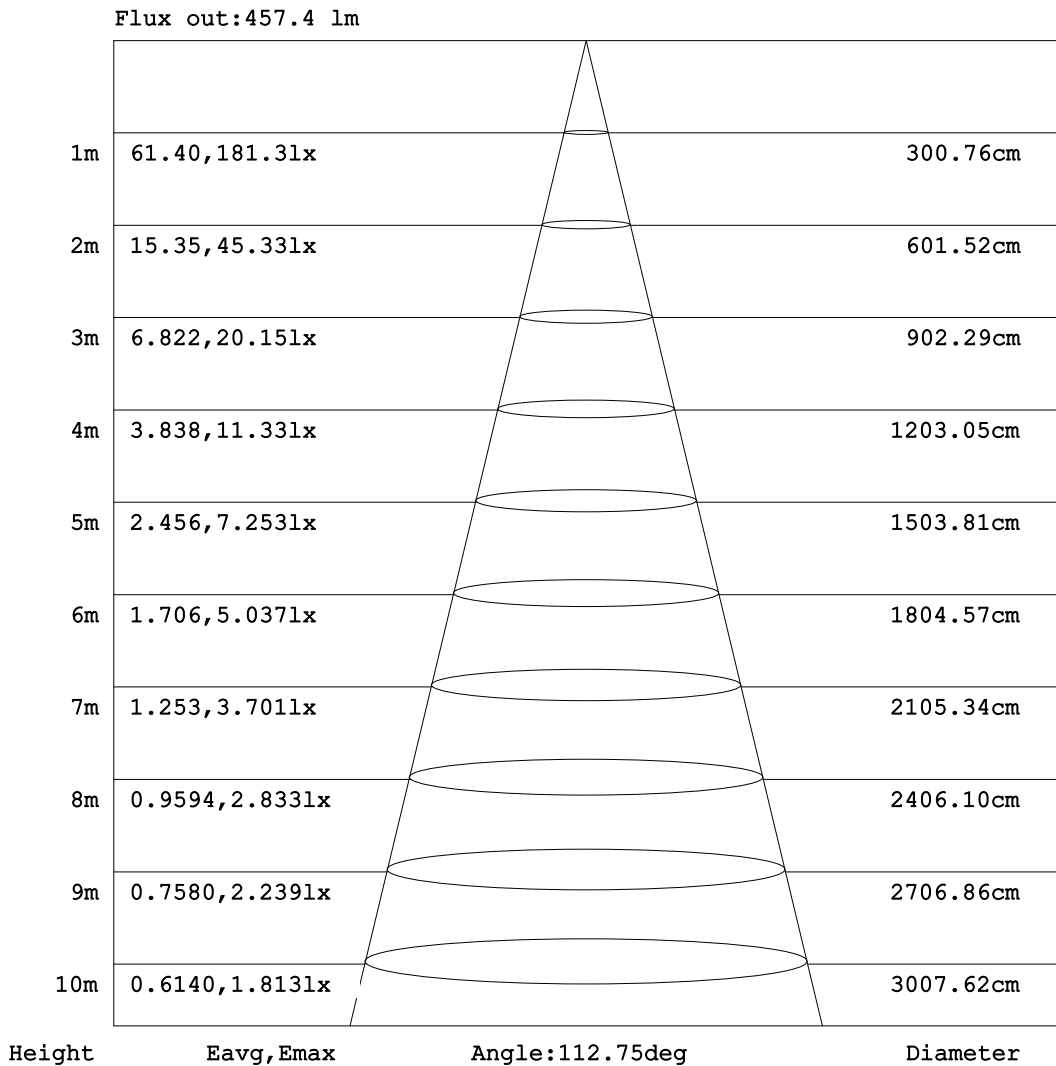
C Range: 0 - 360DEG  
 C Interval: 22.5DEG  
 Test Speed: HIGH  
 Temperature:25.2℃  
 Operators:Dano  
 Test Date:2023-05-30

γ Range: 0 - 180DEG  
 γ Interval: 1.0DEG  
 Test System:EVERFINE GO-R5000\_V2 SYSTEM V2.00.459  
 Humidity:55.3%  
 Test Distance:2.900m [K=0.8810]  
 Remarks:



**AAI Figure**

Test:U:120.0V I:0.2457A P:29.25W PF:0.9922 Freq:60.01Hz Lamp Flux:1540.19x1 lm		
NAME: VN27-36-30S-952C5-MVTD-BK 3000K	TYPE:	WEIGHT:
SPEC.:	DIM.:	SERIAL No.:
MFR.: FOSHAN LEDKEY LIGHTING CO.,LTD.	SUR.:	Shielding Angle:



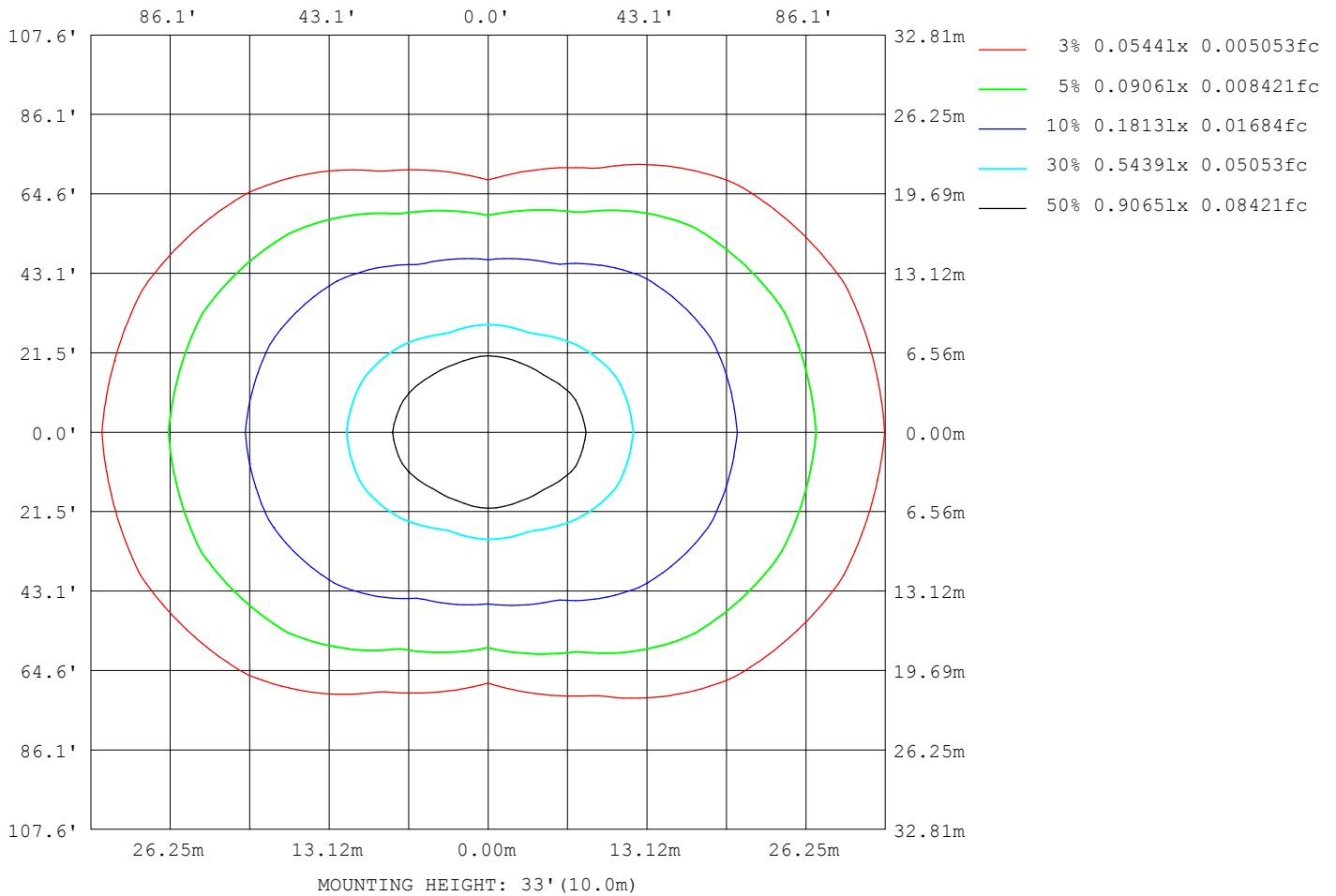
Note:The Curves indicate the illuminated area and the average illumination when the luminaire is at different distance.

C Range: 0 - 360DEG  
 C Interval: 22.5DEG  
 Test Speed: HIGH  
 Temperature:25.2℃  
 Operators:Dano  
 Test Date:2023-05-30

γ Range: 0 - 180DEG  
 γ Interval: 1.0DEG  
 Test System:EVERFINE GO-R5000\_V2 SYSTEM V2.00.459  
 Humidity:55.3%  
 Test Distance:2.900m [K=0.8810]  
 Remarks:

ISOLUX DIAGRAM

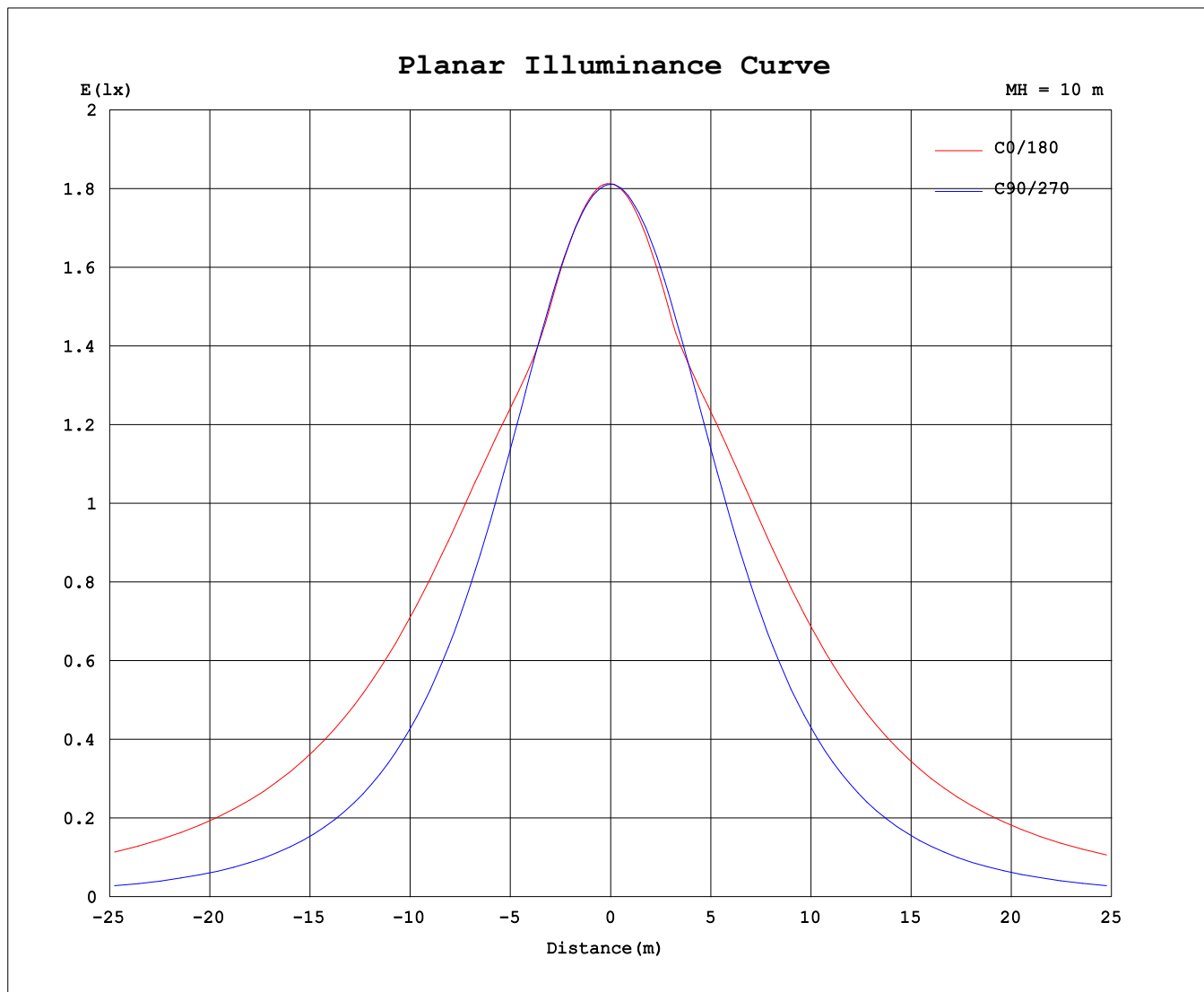
Test:U:120.0V I:0.2457A P:29.25W PF:0.9922 Freq:60.01Hz Lamp Flux:1540.19x1 lm		
NAME: VN27-36-30S-952C5-MVTD-BK 3000K	TYPE:	WEIGHT:
SPEC.:	DIM.:	SERIAL No.:
MFR.: FOSHAN LEDKEY LIGHTING CO.,LTD.	SUR.:	Shielding Angle:



C Range: 0 - 360DEG  
 C Interval: 22.5DEG  
 Test Speed: HIGH  
 Temperature:25.2°C  
 Operators:Dano  
 Test Date:2023-05-30

γ Range: 0 - 180DEG  
 γ Interval: 1.0DEG  
 Test System:EVERFINE GO-R5000\_V2 SYSTEM V2.00.459  
 Humidity:55.3%  
 Test Distance:2.900m [K=0.8810]  
 Remarks:

### Planar Illuminance Curve



C Range: 0 - 360DEG  
C Interval: 22.5DEG  
Test Speed: HIGH  
Temperature: 25.2°C  
Operators: Dano  
Test Date: 2023-05-30

γ Range: 0 - 180DEG  
γ Interval: 1.0DEG  
Test System: EVERFINE GO-R5000\_V2 SYSTEM V2.00.459  
Humidity: 55.3%  
Test Distance: 2.900m [K=0.8810]  
Remarks:

LUMINOUS DISTRIBUTION INTENSITY DATA

Test:U:120.0V I:0.2457A P:29.25W PF:0.9922 Freq:60.01Hz Lamp Flux:1540.19x1 lm		
NAME: VN27-36-30S-952C5-MVTD-BK 3000K	TYPE:	WEIGHT:
SPEC.:	DIM.:	SERIAL No.:
MFR.: FOSHAN LEDKEY LIGHTING CO.,LTD.	SUR.:	Shielding Angle:

Table--1

UNIT: cd

C (DEG) γ (DEG)	0	22.5	45	67.5	90	112.5	135	157.5	180	202.5	225	247.5	270	292.5	315	337.5				
0	181	181	181	181	181	181	181	181	181	181	181	181	181	181	181	181				
5	181	180	181	180	180	180	180	180	180	180	180	180	180	180	180	181	181			
10	178	176	178	178	178	177	177	176	176	178	177	177	178	178	178	178	178			
15	173	171	174	174	174	173	172	170	170	173	172	173	174	174	174	173				
20	168	166	168	168	168	167	165	165	167	167	165	167	169	169	168	167				
25	172	169	161	161	162	160	158	166	170	165	158	160	162	162	160	167				
30	179	174	157	153	153	151	155	171	177	169	156	151	154	154	156	172				
35	186	180	156	143	144	141	155	176	183	174	156	142	144	144	156	178				
40	194	186	158	133	133	130	156	181	189	178	156	131	133	133	158	185				
45	201	191	159	123	121	121	156	185	194	182	156	123	122	123	159	191				
50	207	195	159	115	108	113	156	188	198	185	156	115	109	115	161	196				
55	211	198	159	108	94.1	105	155	190	201	187	154	107	95.1	108	162	199				
60	215	199	158	101	79.3	97.8	154	191	203	188	151	99.7	80.4	101	161	202				
65	217	199	156	93.6	63.8	90.1	151	191	203	188	148	91.6	64.9	94.0	160	204				
70	218	199	152	86.1	47.8	82.0	147	190	203	187	143	83.0	48.9	87.0	158	204				
75	218	197	149	78.5	31.7	73.9	143	188	202	184	138	74.4	32.8	79.8	154	203				
80	218	197	145	71.5	16.6	66.7	139	187	202	182	133	66.3	17.6	73.1	151	203				
85	220	199	143	66.8	4.83	62.3	138	189	205	182	131	60.8	5.44	68.5	150	204				
90	227	206	147	68.5	0.27	64.9	144	196	212	186	136	62.2	0.32	70.2	154	210				
95	233	211	152	73.9	0.90	69.4	148	201	217	192	140	66.3	0.49	75.8	160	216				
100	237	214	156	78.3	1.72	72.8	151	204	220	196	143	69.5	1.19	80.2	164	220				
105	238	214	158	74.1	2.93	69.9	152	204	220	197	144	69.6	2.21	73.2	166	221				
110	236	212	159	57.9	4.33	58.6	151	202	218	196	144	58.8	3.39	60.4	165	219				
115	231	205	145	47.0	6.05	46.2	144	197	213	193	139	45.3	4.78	48.1	150	215				
120	217	182	126	36.6	7.88	36.4	126	189	206	188	123	34.5	6.08	38.7	124	197				
125	190	156	105	34.3	9.69	34.0	105	166	188	173	103	29.7	7.77	36.7	105	171				
130	160	128	82.4	31.4	11.5	31.9	81.4	140	161	149	80.6	28.4	9.71	34.8	83.6	143				
135	130	99.5	57.3	31.6	13.1	30.0	63.6	110	132	123	63.2	27.4	11.4	32.4	62.3	111				
140	98.8	73.0	48.7	30.6	14.7	28.3	51.4	84.2	98.8	93.9	48.9	26.8	13.0	30.6	54.8	84.1				
145	71.1	59.6	44.8	29.3	16.6	26.4	46.0	61.8	74.7	72.7	45.2	26.8	14.8	27.4	47.1	62.2				
150	60.1	52.7	41.0	27.8	17.9	24.6	40.5	52.2	56.2	55.4	42.2	27.1	14.7	23.5	38.8	53.3				
155	52.1	45.2	35.6	25.9	18.5	23.3	35.3	44.9	48.6	49.4	39.0	27.2	16.4	20.6	34.2	44.8				
160	44.1	36.9	32.6	20.3	15.8	22.0	30.3	37.6	40.8	43.1	35.1	26.4	18.5	17.1	27.8	37.2				
165	36.0	29.5	26.5	13.0	13.8	20.7	25.9	30.5	32.9	35.9	29.8	24.4	16.1	12.3	17.5	30.6				
170	27.9	19.1	12.3	12.6	13.8	15.1	22.7	24.6	25.9	28.4	24.7	21.6	10.3	11.8	13.6	15.5				
175	22.4	12.1	16.0	17.6	17.0	15.8	18.1	20.8	21.3	22.9	20.2	17.0	13.5	14.8	15.5	14.1				
180	18.8	28.9	23.1	21.7	21.4	21.7	21.7	19.8	11.9	17.0	19.9	21.4	21.5	21.5	21.4	21.5				

C Range: 0 - 360DEG  
 C Interval: 22.5DEG  
 Test Speed: HIGH  
 Temperature:25.2℃  
 Operators:Dano  
 Test Date:2023-05-30

γ Range: 0 - 180DEG  
 γ Interval: 1.0DEG  
 Test System:EVERFINE GO-R5000\_V2 SYSTEM V2.00.459  
 Humidity:55.3%  
 Test Distance:2.900m [K=0.8810]  
 Remarks: