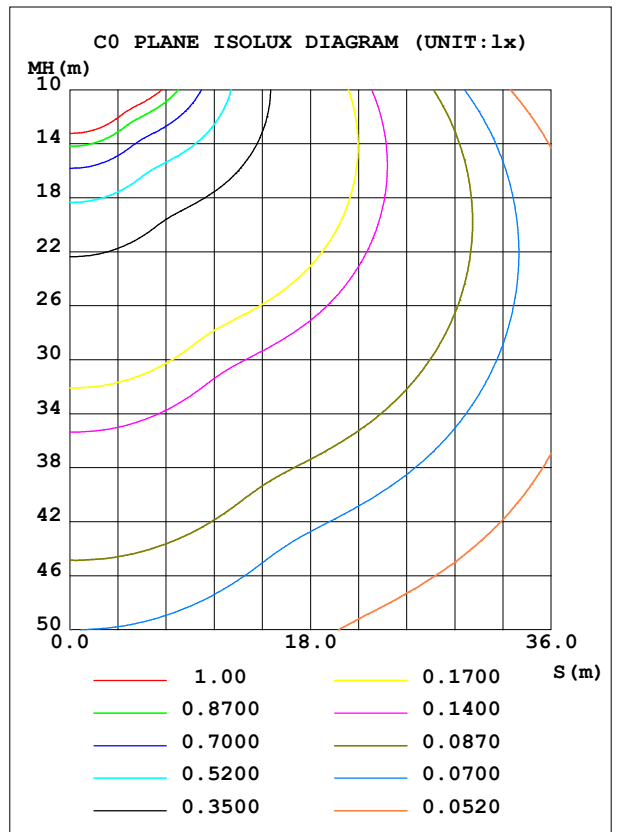
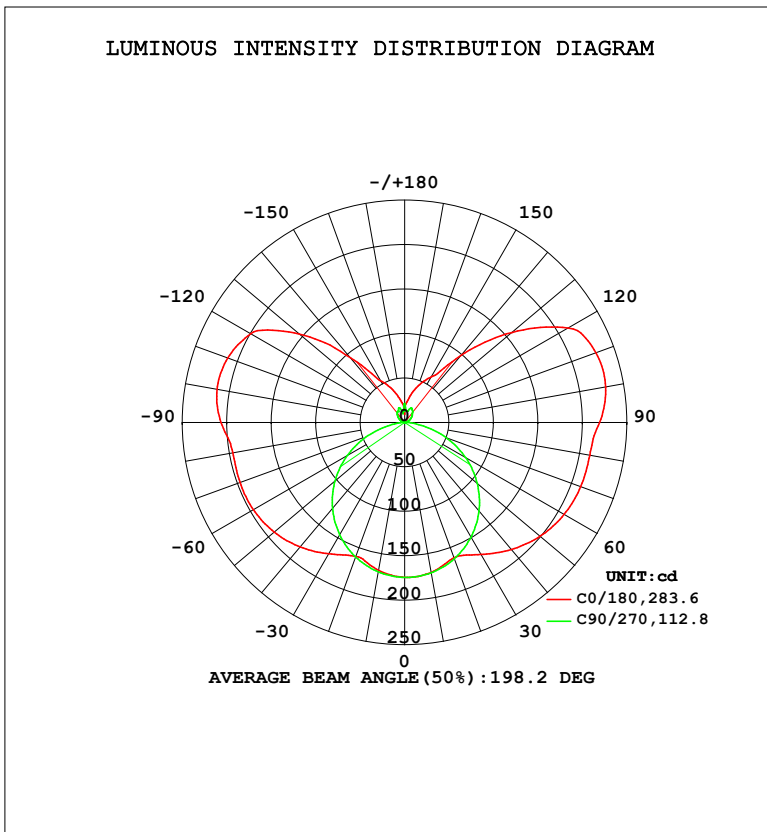


LUMINAIRE PHOTOMETRIC TEST REPORT

Test:U:120.1V I:0.2431A P:28.96W PF:0.9922 Freq:60.01Hz Lamp Flux:1494.08x1 lm		
NAME: VN27-36-30S-952C5-MVTD-BK 2700K	TYPE:	WEIGHT:
SPEC.:	DIM.:	SERIAL No.:
MFR.: FOSHAN LEDKEY LIGHTING CO.,LTD.	SUR.:	Shielding Angle:

DATA OF LAMP		PHOTOMETRIC DATA				Eff: 51.58 lm/W
MODEL		I _{max} (cd)	230.7	S/MH (C0/180)		1.59
NOMINAL POWER (W)		LOR (%)	100.0	S/MH (C90/270)		1.25
RATED VOLTAGE (V)	120	TOTAL FLUX (lm)	1494.1	η UP, DN (C0-180)		20.2, 30.1
NOMINAL FLUX (lm)	1494.08	CIE CLASS	DIFFUSE	η UP, DN (C180-360)		19.9, 29.7
LAMPS INSIDE	1	η up (%)	40.2	CIBSE SHR NOM		1.50
TEST VOLTAGE (V)	120	η down (%)	59.8	CIBSE SHR MAX		1.55



C Range: 0 - 360DEG
 C Interval: 22.5DEG
 Test Speed: HIGH
 Temperature: 25.2 °C
 Operators: Dano
 Test Date: 2023-05-30

γ Range: 0 - 180DEG
 γ Interval: 1.0DEG
 Test System: EVERFINE GO-R5000_V2 SYSTEM V2.00.459
 Humidity: 55.3%
 Test Distance: 2.900m [K=0.8810]
 Remarks:

ZONAL FLUX DIAGRAM

ZONAL FLUX DIAGRAM:

γ	C0	C45	C90	C135	C180	C225	C270	C315	γ	Φ zone	Φ total	%lum, lamp
10	171.3	171.6	171.9	170.5	168.9	169.8	170.7	170.8	0- 10	16.46	16.46	1.1,1.1
20	162.0	161.7	163.3	159.8	160.4	158.6	161.3	160.4	10- 20	46.91	63.37	4.24,4.24
30	171.3	150.6	149.2	150.0	170.7	150.6	146.1	150.0	20- 30	72.81	136.2	9.11,9.11
40	186.6	151.2	130.2	150.5	182.8	151.0	126.2	151.9	30- 40	96.72	232.9	15.6,15.6
50	199.0	153.2	106.7	151.5	191.7	150.6	102.3	155.1	40- 50	117.0	349.9	23.4,23.4
60	207.2	152.2	79.39	149.5	196.5	146.7	74.49	155.7	50- 60	131.8	481.6	32.2,32.2
70	210.7	147.2	49.27	143.8	197.1	138.8	44.05	152.1	60- 70	138.9	620.5	41.5,41.5
80	211.5	140.0	18.89	136.2	196.5	129.4	14.39	146.4	70- 80	137.9	758.4	50.8,50.8
90	219.3	141.8	0.3783	139.5	206.5	132.1	0.2285	150.6	80- 90	135.7	894.1	59.8,59.8
100	229.6	151.6	1.470	147.5	214.2	139.1	1.342	159.8	90-100	142.9	1037	69.4,69.4
110	229.0	154.2	3.911	148.1	211.7	139.6	3.593	160.0	100-110	141.5	1178	78.9,78.9
120	212.5	123.8	7.280	125.8	199.8	118.2	6.310	117.9	110-120	122.0	1300	87,87
130	157.8	78.77	10.85	81.81	154.7	77.18	9.849	78.49	120-130	88.17	1389	92.9,92.9
140	98.19	50.42	13.96	50.88	94.93	47.14	13.11	52.66	130-140	52.60	1441	96.5,96.5
150	58.95	40.01	17.22	40.19	54.23	40.69	14.43	39.13	140-150	28.38	1470	98.4,98.4
160	43.36	31.39	16.13	30.11	39.15	33.75	17.70	25.85	150-160	15.89	1485	99.4,99.4
170	27.63	12.03	13.34	22.54	24.82	23.57	11.01	13.11	160-170	6.926	1492	99.9,99.9
180	16.79	22.54	21.72	21.39	11.41	19.19	21.04	20.91	170-180	1.673	1494	100,100
DEG	LUMINOUS INTENSITY:cd									UNIT:lm		

Conical surface Flux(90deg): 289.13 lm

%lum = 19.4%
 %lamp = 19.4%

Conical surface Flux(120deg): 481.61 lm

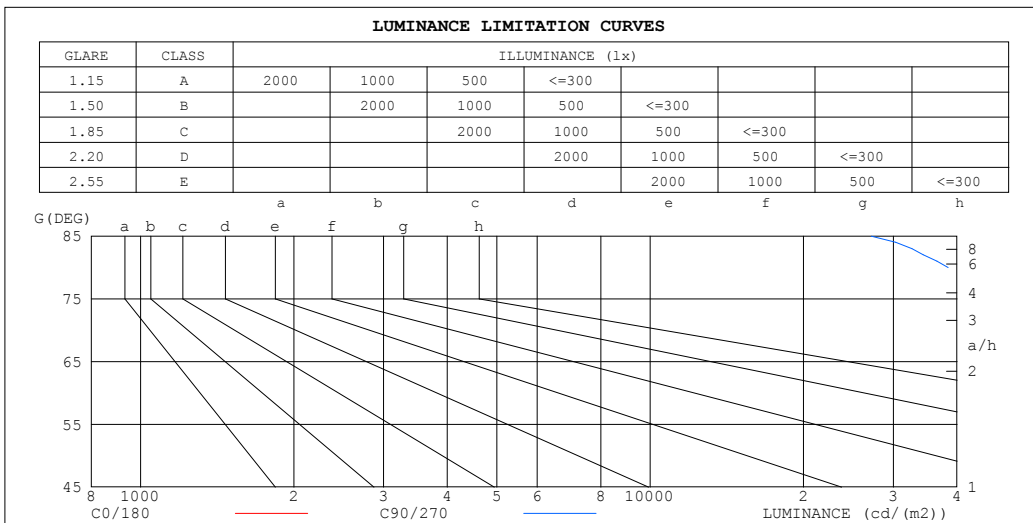
%lum = 32.2%
 %lamp = 32.2%

C Range: 0 - 360DEG
 C Interval: 22.5DEG
 Test Speed: HIGH
 Temperature:25.2℃
 Operators:Dano
 Test Date:2023-05-30

γ Range: 0 - 180DEG
 γ Interval: 1.0DEG
 Test System:EVERFINE GO-R5000_V2 SYSTEM V2.00.459
 Humidity:55.3%
 Test Distance:2.900m [K=0.8810]
 Remarks:

LUMINANCE LIMITATION CURVES

Test:U:120.1V I:0.2431A P:28.96W PF:0.9922 Freq:60.01Hz Lamp Flux:1494.08x1 lm		
NAME: VN27-36-30S-952C5-MVTD-BK 2700K	TYPE:	WEIGHT:
SPEC.:	DIM.:	SERIAL No.:
MFR.: FOSHAN LEDKEY LIGHTING CO.,LTD.	SUR.:	Shielding Angle:



LUMINANCE cd/(m2)		
G (DEG)	C0/180	C90/270
85	867585	27159
80	432691	38454
75	289945	45984
70	218865	50923
65	176022	54043
60	147194	56128
55	126142	57597
50	109983	58682
45	97110	59469

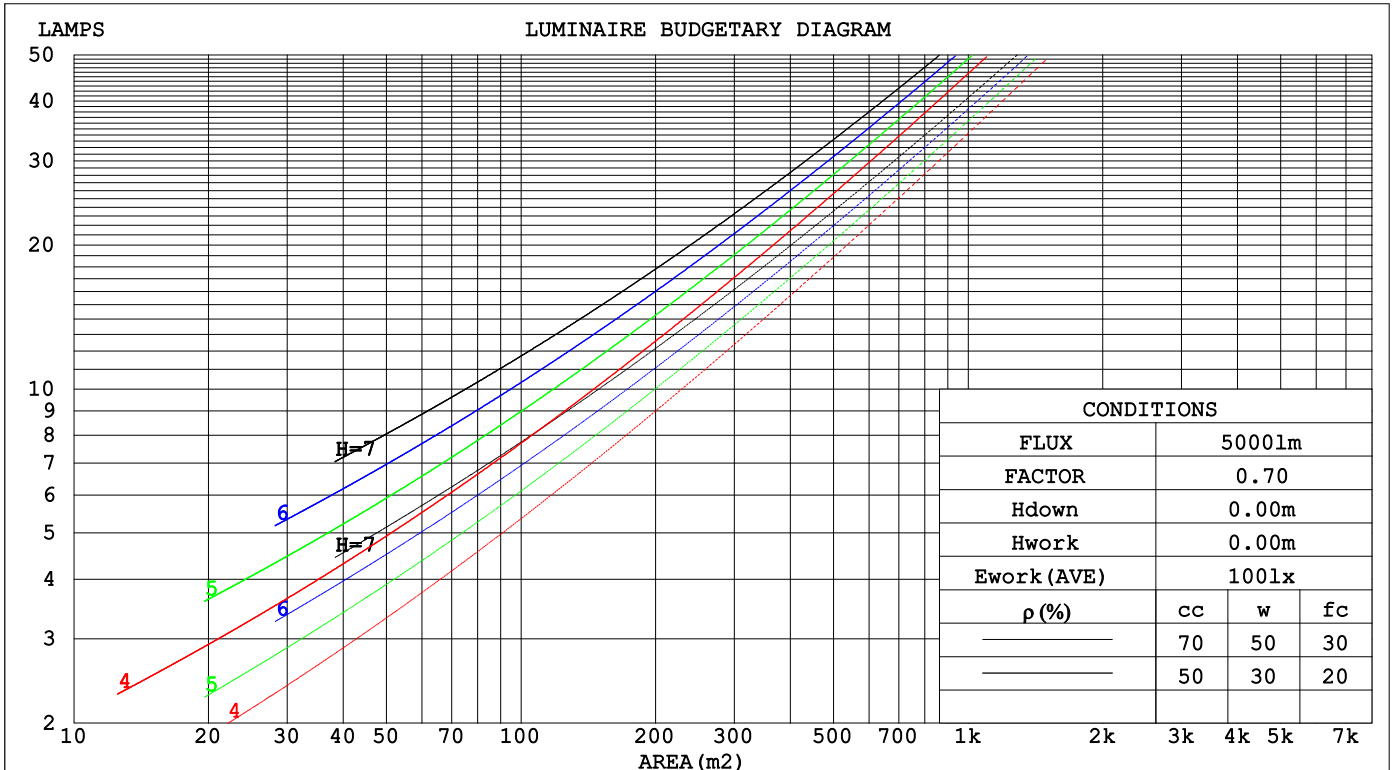
C Range: 0 - 360DEG
 C Interval: 22.5DEG
 Test Speed: HIGH
 Temperature:25.2℃
 Operators:Dano
 Test Date:2023-05-30

γ Range: 0 - 180DEG
 γ Interval: 1.0DEG
 Test System:EVERFINE GO-R5000_V2 SYSTEM V2.00.459
 Humidity:55.3%
 Test Distance:2.900m [K=0.8810]
 Remarks:

CU AND LUMINAIRE BUDGETARY ESTIMATE DIAGRAM

Test:U:120.1V I:0.2431A P:28.96W PF:0.9922 Freq:60.01Hz Lamp Flux:1494.08x1 lm		
NAME: VN27-36-30S-952C5-MVTD-BK 2700K	TYPE:	WEIGHT:
SPEC.:	DIM.:	SERIAL No.:
MFR.: FOSHAN LEDKEY LIGHTING CO.,LTD.	SUR.:	Shielding Angle:

pcc	80%			70%			50%			30%			10%			0
pw	50%	30%	10%	50%	30%	10%	50%	30%	10%	50%	30%	10%	50%	30%	10%	0
pfc	20%			20%			20%			20%			20%			0
RCR	RCR:Room Cavity Ratio						Coefficients of Utilization(CU)									
0.0	1.09	1.09	1.09	1.02	1.02	1.02	.89	.89	.89	.76	.76	.76	.65	.65	.65	.60
1.0	.89	.84	.79	.83	.78	.74	.71	.68	.64	.61	.58	.55	.51	.48	.46	.41
2.0	.76	.68	.61	.70	.63	.57	.60	.55	.50	.51	.47	.43	.42	.39	.36	.31
3.0	.65	.56	.49	.61	.52	.46	.52	.45	.40	.44	.39	.34	.36	.32	.29	.25
4.0	.57	.48	.40	.53	.44	.38	.45	.38	.33	.38	.33	.28	.32	.27	.24	.20
5.0	.50	.41	.34	.47	.38	.32	.40	.33	.28	.34	.28	.24	.28	.24	.20	.17
6.0	.45	.36	.29	.42	.33	.27	.36	.29	.24	.30	.25	.21	.25	.21	.17	.14
7.0	.40	.31	.25	.38	.29	.24	.32	.26	.21	.27	.22	.18	.23	.18	.15	.12
8.0	.36	.28	.22	.34	.26	.21	.29	.23	.18	.25	.20	.16	.21	.17	.13	.11
9.0	.33	.25	.19	.31	.23	.18	.27	.21	.16	.23	.18	.14	.19	.15	.12	.10
10.0	.30	.22	.17	.28	.21	.16	.25	.19	.14	.21	.16	.13	.18	.14	.11	.09



C Range: 0 - 360DEG
 C Interval: 22.5DEG
 Test Speed: HIGH
 Temperature:25.2°C
 Operators:Dano
 Test Date:2023-05-30

γ Range: 0 - 180DEG
 γ Interval: 1.0DEG
 Test System:EVERFINE GO-R5000_V2 SYSTEM V2.00.459
 Humidity:55.3%
 Test Distance:2.900m [K=0.8810]
 Remarks:

WEC AND CCEC

Test:U:120.1V I:0.2431A P:28.96W PF:0.9922 Freq:60.01Hz Lamp Flux:1494.08x1 lm		
NAME: VN27-36-30S-952C5-MVTD-BK 2700K	TYPE:	WEIGHT:
SPEC.:	DIM.:	SERIAL No.:
MFR.: FOSHAN LEDKEY LIGHTING CO.,LTD.	SUR.:	Shielding Angle:

ρcc	80%			70%			50%			30%			10%			0
ρw	50%	30%	10%	50%	30%	10%	50%	30%	10%	50%	30%	10%	50%	30%	10%	0
ρfc	20%			20%			20%			20%			20%			0
RCR	RCR:Room Cavity Ratio						Wall Exitance Coefficients(WEC)									
0.0																
1.0	.403	.229	.073	.384	.219	.070	.348	.199	.064	.314	.181	.058	.283	.164	.053	
2.0	.340	.186	.057	.322	.177	.055	.289	.161	.050	.258	.145	.045	.230	.130	.041	
3.0	.298	.158	.047	.282	.151	.045	.251	.136	.041	.223	.122	.038	.197	.109	.034	
4.0	.266	.138	.041	.251	.131	.039	.223	.118	.035	.198	.106	.032	.174	.094	.029	
5.0	.240	.122	.035	.227	.116	.034	.201	.105	.031	.178	.094	.028	.155	.083	.025	
6.0	.219	.110	.031	.207	.105	.030	.183	.094	.027	.162	.084	.025	.141	.074	.022	
7.0	.202	.100	.028	.190	.095	.027	.169	.085	.025	.148	.076	.022	.129	.067	.020	
8.0	.187	.091	.026	.176	.087	.024	.156	.078	.022	.137	.069	.020	.119	.061	.018	
9.0	.174	.084	.023	.164	.080	.022	.145	.072	.020	.128	.064	.018	.111	.056	.016	
10.0	.162	.078	.022	.153	.074	.021	.136	.066	.019	.119	.059	.017	.104	.052	.015	

ρcc	80%			70%			50%			30%			10%			0
ρw	50%	30%	10%	50%	30%	10%	50%	30%	10%	50%	30%	10%	50%	30%	10%	0
ρfc	20%			20%			20%			20%			20%			0
RCR	RCR:Room Cavity Ratio						Ceiling Cavity Exitance Coefficients(CCEC)									
0.0	.496	.496	.496	.424	.424	.424	.290	.290	.290	.166	.166	.166	.053	.053	.053	
1.0	.495	.464	.435	.424	.398	.375	.290	.274	.259	.167	.158	.151	.053	.051	.049	
2.0	.489	.442	.403	.419	.381	.348	.287	.263	.243	.166	.153	.142	.053	.050	.046	
3.0	.482	.427	.383	.413	.368	.332	.284	.256	.233	.164	.149	.137	.053	.048	.045	
4.0	.475	.415	.369	.407	.359	.321	.280	.250	.226	.162	.146	.134	.052	.048	.044	
5.0	.467	.406	.360	.401	.351	.314	.276	.245	.221	.160	.144	.131	.052	.047	.043	
6.0	.460	.398	.354	.395	.345	.308	.273	.241	.218	.158	.142	.130	.051	.046	.043	
7.0	.453	.392	.349	.390	.340	.304	.269	.238	.216	.156	.140	.128	.051	.046	.042	
8.0	.446	.387	.346	.384	.335	.301	.266	.235	.214	.155	.139	.127	.050	.046	.042	
9.0	.440	.382	.343	.379	.332	.299	.263	.233	.212	.153	.138	.127	.050	.045	.042	
10.0	.435	.378	.341	.375	.328	.297	.260	.231	.211	.152	.137	.126	.049	.045	.042	

C Range: 0 - 360DEG
 C Interval: 22.5DEG
 Test Speed: HIGH
 Temperature:25.2℃
 Operators:Dano
 Test Date:2023-05-30

γ Range: 0 - 180DEG
 γ Interval: 1.0DEG
 Test System:EVERFINE GO-R5000_V2 SYSTEM V2.00.459
 Humidity:55.3%
 Test Distance:2.900m [K=0.8810]
 Remarks:

UGR(Unified Glare Rating) Table

Test:U:120.1V I:0.2431A P:28.96W PF:0.9922 Freq:60.01Hz Lamp Flux:1494.08x1 lm		
NAME: VN27-36-30S-952C5-MVTD-BK 2700K	TYPE:	WEIGHT:
SPEC.:	DIM.:	SERIAL No.:
MFR.: FOSHAN LEDKEY LIGHTING CO.,LTD.	SUR.:	Shielding Angle:

ceiling/cavity	0.7	0.7	0.5	0.5	0.3	0.7	0.7	0.5	0.5	0.3
walls	0.5	0.3	0.5	0.3	0.3	0.5	0.3	0.5	0.3	0.3
working plane	0.2	0.2	0.2	0.2	0.2	0.2	0.2	0.2	0.2	0.2
Room dimensions	Viewed crosswise					Viewed endwise				
x = 2H y = 2H	25.0	27.3	26.6	29.0	31.1	19.9	22.2	21.5	23.9	25.9
3H	28.4	30.5	30.1	32.2	34.4	21.6	23.6	23.2	25.3	27.5
4H	30.2	32.2	31.9	33.9	36.1	22.1	24.1	23.8	25.8	28.0
6H	32.3	34.1	34.0	35.8	38.1	22.4	24.2	24.1	26.0	28.2
8H	33.4	35.1	35.1	36.9	39.1	22.4	24.2	24.2	26.0	28.2
12H	34.6	36.3	36.4	38.1	40.4	22.4	24.1	24.2	25.9	28.2
4H 2H	25.1	27.1	26.8	28.8	31.0	21.8	23.8	23.5	25.5	27.7
3H	28.8	30.5	30.5	32.3	34.6	23.7	25.5	25.5	27.2	29.5
4H	30.9	32.4	32.6	34.2	36.5	24.5	26.1	26.3	27.9	30.2
6H	33.1	34.5	34.9	36.4	38.7	25.0	26.5	26.8	28.3	30.6
8H	34.4	35.7	36.2	37.5	39.9	25.2	26.5	27.0	28.3	30.7
12H	35.8	37.0	37.6	38.9	41.3	25.2	26.4	27.0	28.3	30.7
8H 4H	31.0	32.3	32.8	34.2	36.5	26.5	27.8	28.3	29.6	32.0
6H	33.6	34.7	35.4	36.6	39.0	27.5	28.7	29.4	30.6	33.0
8H	35.1	36.1	36.9	38.0	40.4	28.0	29.0	29.8	30.9	33.3
12H	36.8	37.7	38.7	39.6	42.1	28.3	29.2	30.2	31.1	33.6
12H 4H	30.9	32.2	32.8	34.0	36.4	27.1	28.3	29.0	30.2	32.6
6H	33.6	34.7	35.5	36.6	39.0	28.6	29.6	30.4	31.5	33.9
8H	35.2	36.2	37.1	38.1	40.5	29.3	30.2	31.2	32.1	34.6
CIE190: 2010										

CIE190: 2010
Area: 0.002827 m2

C Range: 0 - 360DEG
C Interval: 22.5DEG
Test Speed: HIGH
Temperature:25.2℃
Operators:Dano
Test Date:2023-05-30

γ Range: 0 - 180DEG
γ Interval: 1.0DEG
Test System:EVERFINE GO-R5000_V2 SYSTEM V2.00.459
Humidity:55.3%
Test Distance:2.900m [K=0.8810]
Remarks:

UTILIZATION FACTORS TABLE

Test:U:120.1V I:0.2431A P:28.96W PF:0.9922 Freq:60.01Hz Lamp Flux:1494.08x1 lm		
NAME: VN27-36-30S-952C5-MVTD-BK 2700K	TYPE:	WEIGHT:
SPEC.:	DIM.:	SERIAL No.:
MFR.: FOSHAN LEDKEY LIGHTING CO.,LTD.	SUR.:	Shielding Angle:

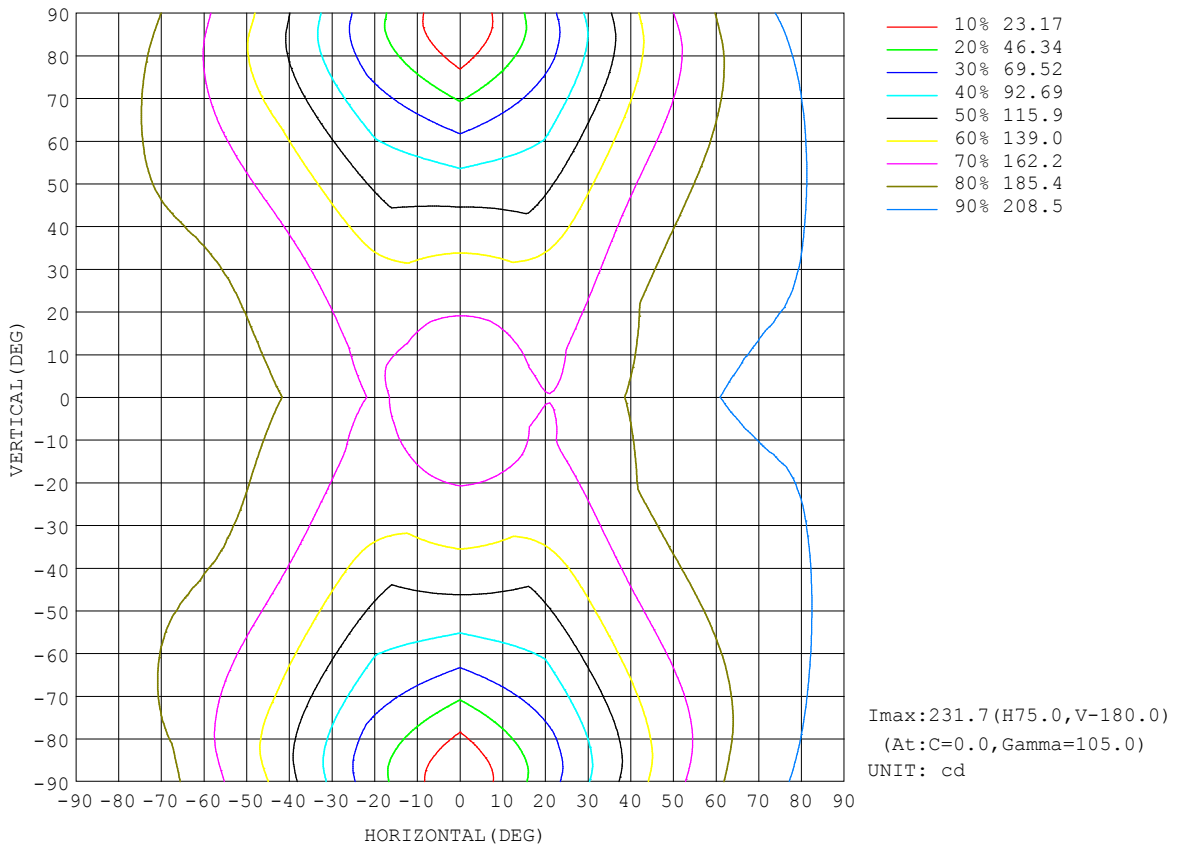
REFLECTANCE										
Ceiling	0.8	0.8	0.8	0.7	0.7	0.7	0.5	0.5	0.5	0
Walls	0.7	0.5	0.3	0.7	0.5	0.3	0.7	0.5	0.3	0
Working plane	0.2	0.2	0.2	0.2	0.2	0.2	0.2	0.2	0.2	0
ROOM INDEX	UTILIZATION FACTORS (PERCENT) $k(RI) \times RCR = 5$									
k = 0.60	39	27	19	38	26	19	35	24	18	11
0.80	48	34	26	46	33	25	42	31	24	15
1.00	55	41	32	52	40	31	47	38	29	19
1.25	62	48	39	59	46	37	52	42	35	22
1.50	67	54	44	63	51	42	56	46	39	25
2.00	75	62	53	70	59	51	62	53	46	30
2.50	80	68	59	75	64	56	66	57	51	33
3.00	84	73	65	78	69	61	69	61	55	36
4.00	89	80	72	83	75	68	72	66	61	40
5.00	92	84	77	86	79	73	75	69	65	42
ROOM INDEX	UF(total)									Direct
According to DIN EN 13032-2 2004			Suspended				SHRNOM = 1.25			

C Range: 0 - 360DEG
 C Interval: 22.5DEG
 Test Speed: HIGH
 Temperature:25.2°C
 Operators:Dano
 Test Date:2023-05-30

γ Range: 0 - 180DEG
 γ Interval: 1.0DEG
 Test System:EVERFINE GO-R5000_V2 SYSTEM V2.00.459
 Humidity:55.3%
 Test Distance:2.900m [K=0.8810]
 Remarks:

ISOCANDELA DIAGRAM

Test:U:120.1V I:0.2431A P:28.96W PF:0.9922 Freq:60.01Hz Lamp Flux:1494.08x1 lm		
NAME: VN27-36-30S-952C5-MVTD-BK 2700K	TYPE:	WEIGHT:
SPEC.:	DIM.:	SERIAL No.:
MFR.: FOSHAN LEDKEY LIGHTING CO.,LTD.	SUR.:	Shielding Angle:

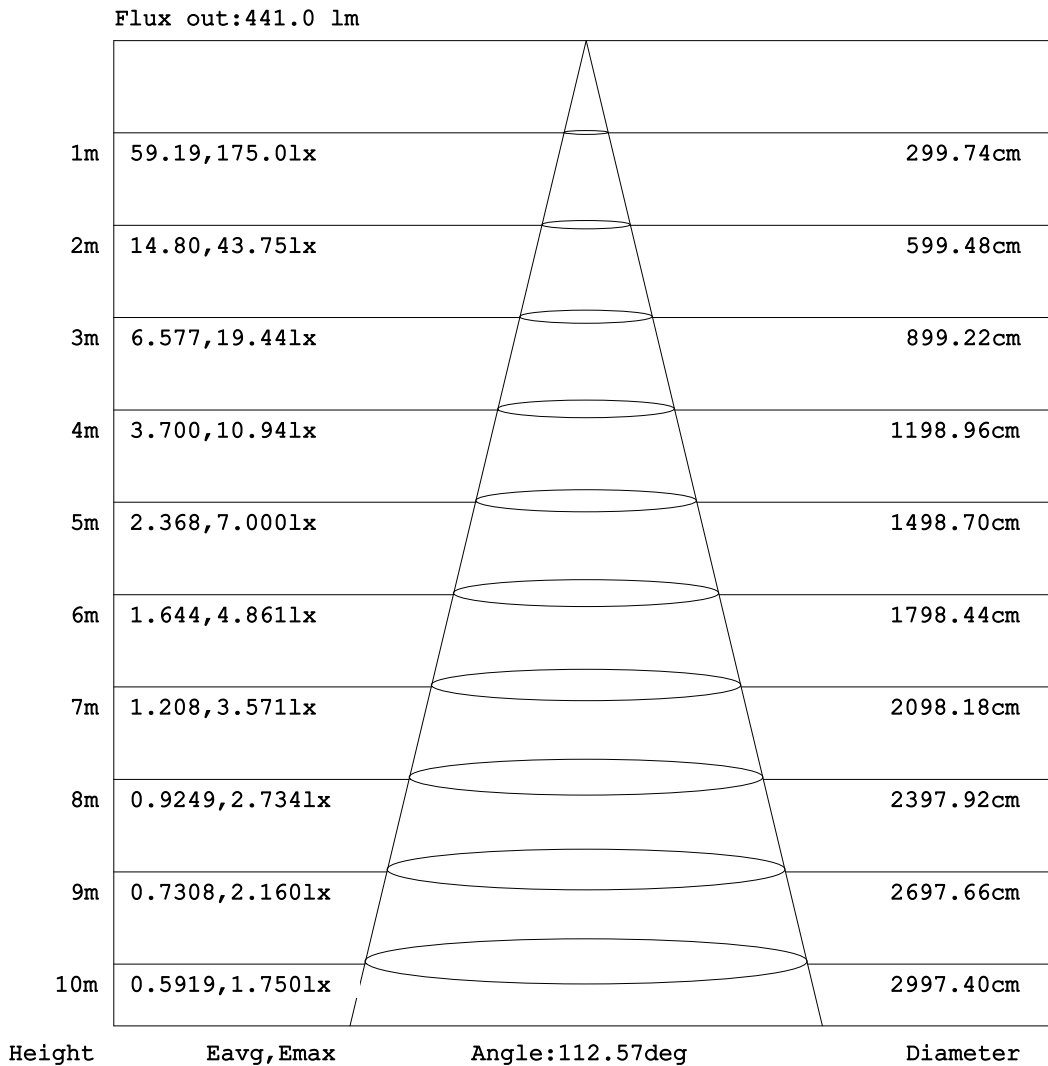


C Range: 0 - 360DEG
 C Interval: 22.5DEG
 Test Speed: HIGH
 Temperature:25.2°C
 Operators:Dano
 Test Date:2023-05-30

γ Range: 0 - 180DEG
 γ Interval: 1.0DEG
 Test System:EVERFINE GO-R5000_V2 SYSTEM V2.00.459
 Humidity:55.3%
 Test Distance:2.900m [K=0.8810]
 Remarks:

AAI Figure

Test:U:120.1V I:0.2431A P:28.96W PF:0.9922 Freq:60.01Hz Lamp Flux:1494.08x1 lm		
NAME: VN27-36-30S-952C5-MVTD-BK 2700K	TYPE:	WEIGHT:
SPEC.:	DIM.:	SERIAL No.:
MFR.: FOSHAN LEDKEY LIGHTING CO.,LTD.	SUR.:	Shielding Angle:



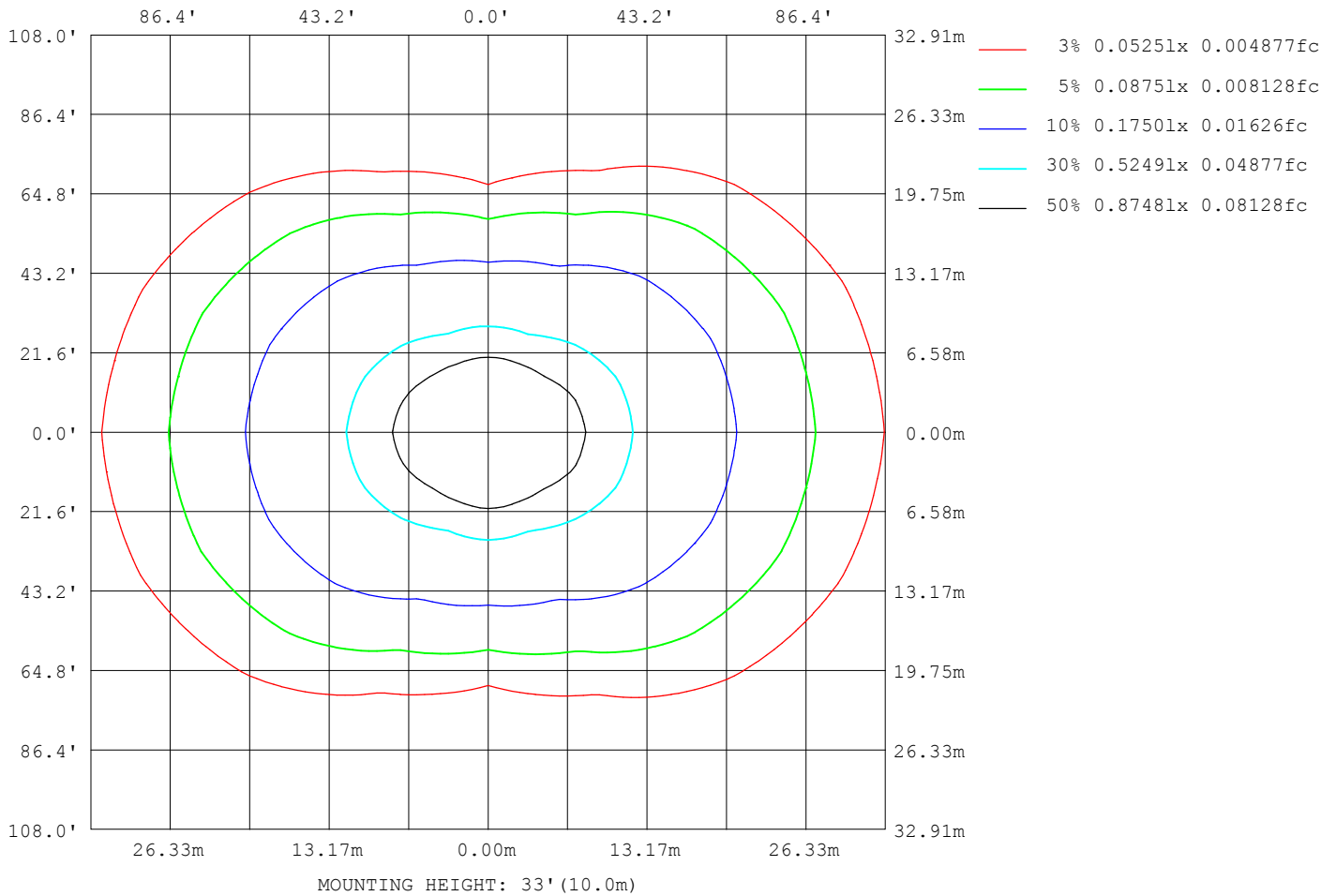
Note:The Curves indicate the illuminated area and the average illumination when the luminaire is at different distance.

C Range: 0 - 360DEG
 C Interval: 22.5DEG
 Test Speed: HIGH
 Temperature:25.2℃
 Operators:Dano
 Test Date:2023-05-30

γ Range: 0 - 180DEG
 γ Interval: 1.0DEG
 Test System:EVERFINE GO-R5000_V2 SYSTEM V2.00.459
 Humidity:55.3%
 Test Distance:2.900m [K=0.8810]
 Remarks:

ISOLUX DIAGRAM

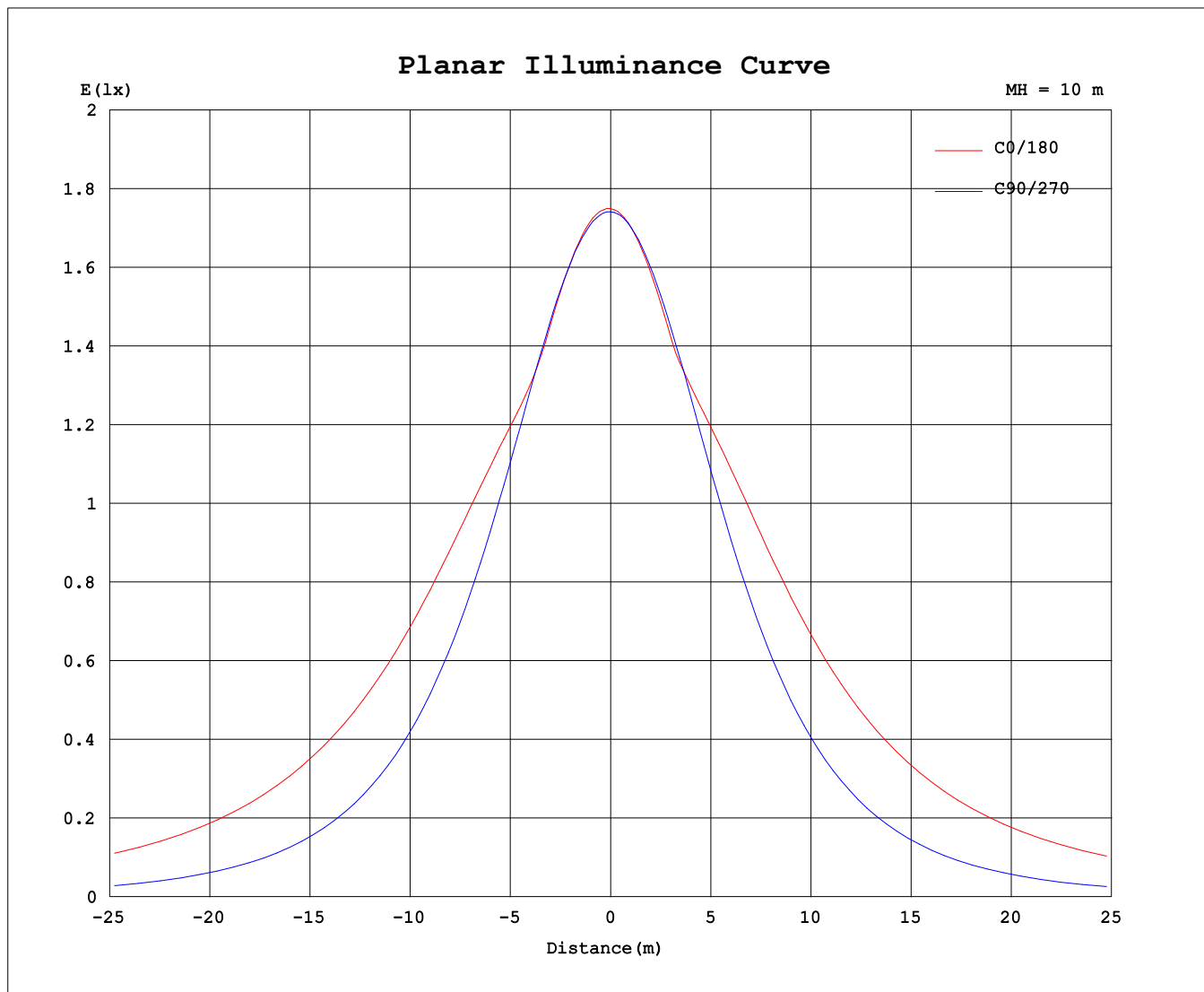
Test:U:120.1V I:0.2431A P:28.96W PF:0.9922 Freq:60.01Hz Lamp Flux:1494.08x1 lm		
NAME: VN27-36-30S-952C5-MVTD-BK 2700K	TYPE:	WEIGHT:
SPEC.:	DIM.:	SERIAL No.:
MFR.: FOSHAN LEDKEY LIGHTING CO.,LTD.	SUR.:	Shielding Angle:



C Range: 0 - 360DEG
 C Interval: 22.5DEG
 Test Speed: HIGH
 Temperature:25.2°C
 Operators:Dano
 Test Date:2023-05-30

γ Range: 0 - 180DEG
 γ Interval: 1.0DEG
 Test System:EVERFINE GO-R5000_V2 SYSTEM V2.00.459
 Humidity:55.3%
 Test Distance:2.900m [K=0.8810]
 Remarks:

Planar Illuminance Curve



C Range: 0 - 360DEG
C Interval: 22.5DEG
Test Speed: HIGH
Temperature: 25.2°C
Operators: Dano
Test Date: 2023-05-30

γ Range: 0 - 180DEG
γ Interval: 1.0DEG
Test System: EVERFINE GO-R5000_V2 SYSTEM V2.00.459
Humidity: 55.3%
Test Distance: 2.900m [K=0.8810]
Remarks:

LUMINOUS DISTRIBUTION INTENSITY DATA

Test:U:120.1V I:0.2431A P:28.96W PF:0.9922 Freq:60.01Hz Lamp Flux:1494.08x1 lm		
NAME: VN27-36-30S-952C5-MVTD-BK 2700K	TYPE:	WEIGHT:
SPEC.:	DIM.:	SERIAL No.:
MFR.: FOSHAN LEDKEY LIGHTING CO.,LTD.	SUR.:	Shielding Angle:

Table--1

UNIT: cd

C (DEG) γ (DEG)	0	22.5	45	67.5	90	112.5	135	157.5	180	202.5	225	247.5	270	292.5	315	337.5				
0	174	174	174	174	174	174	174	174	174	174	174	174	174	174	174	174				
5	174	173	174	174	174	174	173	173	173	173	173	173	173	173	173	174	173			
10	171	170	172	171	172	171	171	170	169	171	170	171	171	171	171	171	171			
15	167	165	167	168	168	167	166	165	163	166	165	166	167	167	166	166				
20	162	160	162	162	163	162	160	159	160	160	159	161	161	162	160	160				
25	165	162	155	156	157	155	153	160	164	159	152	154	154	155	153	161				
30	171	167	151	147	149	147	150	164	171	163	151	145	146	146	150	166				
35	179	173	150	138	140	137	150	169	177	168	151	136	137	137	150	173				
40	187	179	151	128	130	127	150	174	183	173	151	126	126	126	152	179				
45	193	184	152	118	119	118	151	178	188	176	151	118	115	116	154	185				
50	199	188	153	111	107	111	151	182	192	179	151	111	102	109	155	190				
55	204	191	153	104	93.5	103	151	184	195	181	149	104	88.8	102	156	193				
60	207	192	152	97.0	79.4	96.4	150	185	196	182	147	96.2	74.5	95.9	156	196				
65	209	193	150	90.1	64.6	89.1	147	186	197	182	143	88.4	59.5	89.3	154	197				
70	211	192	147	83.1	49.3	81.4	144	185	197	181	139	80.3	44.0	82.7	152	198				
75	211	191	144	75.8	33.7	73.6	140	184	197	179	134	71.9	28.7	76.0	149	197				
80	212	190	140	69.2	18.9	66.4	136	182	196	177	129	64.2	14.4	70.0	146	197				
85	213	192	138	64.6	6.70	61.4	135	184	200	177	128	59.1	3.55	66.4	146	198				
90	219	199	142	66.1	0.38	62.7	140	191	207	182	132	60.5	0.23	69.4	151	205				
95	226	205	147	71.4	0.74	67.1	144	196	212	187	136	64.5	0.55	74.8	156	211				
100	230	208	152	75.8	1.47	70.6	148	199	214	191	139	67.5	1.34	78.9	160	214				
105	231	208	154	72.6	2.59	69.7	149	200	214	192	140	67.1	2.38	70.0	161	215				
110	229	206	154	58.8	3.91	59.6	148	198	212	191	140	56.5	3.59	57.1	160	213				
115	225	200	142	45.1	5.49	46.5	143	194	207	188	135	43.0	5.00	45.6	144	209				
120	213	179	124	35.6	7.28	36.4	126	187	200	183	118	32.6	6.31	37.8	118	189				
125	186	153	103	33.6	9.08	33.3	106	166	181	167	99.3	28.6	8.01	35.9	99.8	163				
130	158	126	78.8	32.2	10.8	31.3	81.8	141	155	143	77.2	27.4	9.85	34.0	78.5	135				
135	128	98.9	60.1	31.1	12.5	29.3	64.7	113	127	118	60.3	26.4	11.5	31.4	58.2	104				
140	98.2	72.9	50.4	30.1	14.0	27.6	50.9	85.3	94.9	89.8	47.1	25.8	13.1	29.7	52.7	78.3				
145	70.8	58.4	43.1	28.9	15.9	25.8	45.5	63.3	71.1	69.0	43.7	25.8	14.8	26.5	44.0	60.2				
150	58.9	51.7	40.0	27.4	17.2	24.0	40.2	52.0	54.2	53.4	40.7	26.0	14.4	22.6	39.1	50.6				
155	51.2	43.5	34.8	25.6	18.2	22.6	35.1	44.9	46.7	47.6	37.6	26.1	16.4	19.8	32.5	42.3				
160	43.4	37.0	31.4	20.1	16.1	21.5	30.1	37.8	39.1	41.4	33.8	25.3	17.7	15.6	25.9	34.2				
165	35.5	30.4	26.3	12.7	13.3	20.2	25.7	30.8	31.6	34.4	28.6	23.4	15.1	12.1	15.2	29.0				
170	27.6	18.2	12.0	12.2	13.3	14.7	22.5	24.7	24.8	27.2	23.6	20.7	11.0	11.6	13.1	14.7				
175	22.0	11.6	15.5	17.1	14.9	14.7	18.9	20.9	20.0	22.0	19.4	16.4	15.4	17.1	16.6	15.0				
180	16.8	27.4	22.5	23.8	21.7	22.2	21.4	16.8	11.4	16.1	19.2	20.9	21.0	21.0	20.9	20.9				

C Range: 0 - 360DEG
 C Interval: 22.5DEG
 Test Speed: HIGH
 Temperature:25.2℃
 Operators:Dano
 Test Date:2023-05-30

γ Range: 0 - 180DEG
 γ Interval: 1.0DEG
 Test System:EVERFINE GO-R5000_V2 SYSTEM V2.00.459
 Humidity:55.3%
 Test Distance:2.900m [K=0.8810]
 Remarks: