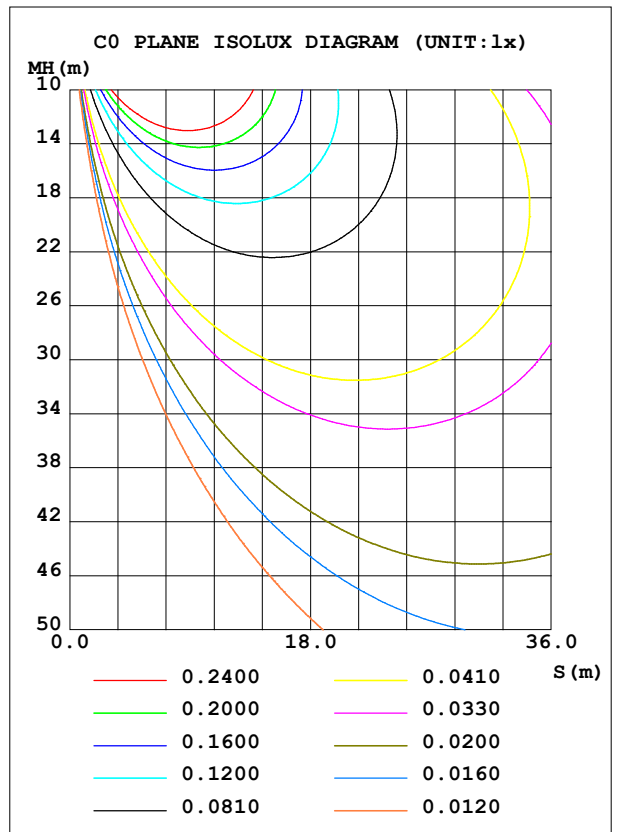
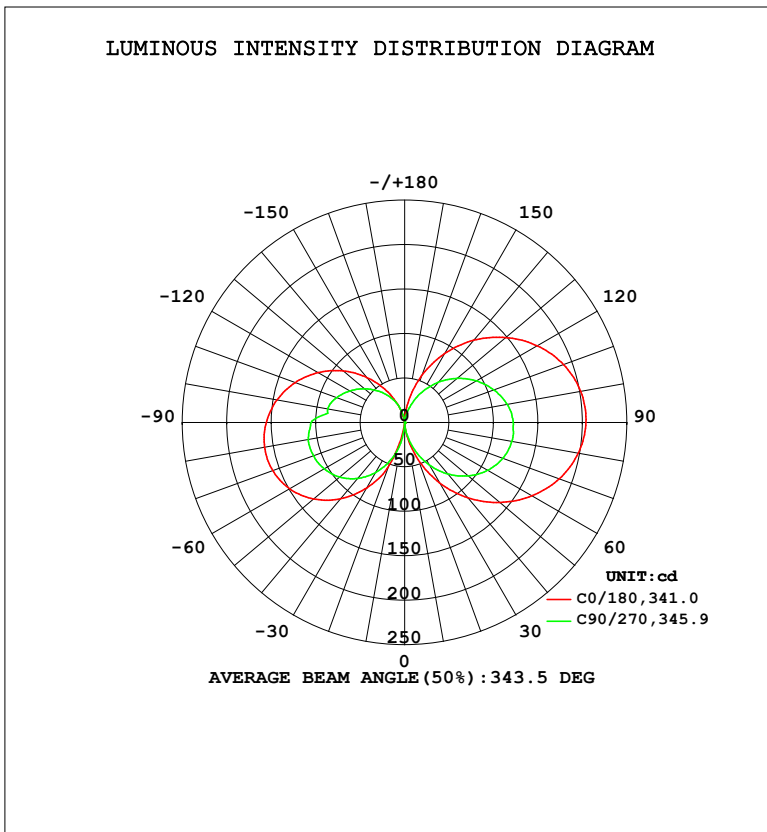


LUMINAIRE PHOTOMETRIC TEST REPORT

Test:U:120.1V I:0.1951A P:23.27W PF:0.9933 Freq:60.01Hz Lamp Flux:1224.66x1 lm		
NAME: PT27-4-3x8S-952C5-MVTD-BN 5000K	TYPE:	WEIGHT:
SPEC.:	DIM.:	SERIAL No.:
MFR.: FOSHAN LEDKEY LIGHTING CO.,LTD.	SUR.:	Shielding Angle:

DATA OF LAMP		PHOTOMETRIC DATA				Eff: 52.62 lm/W
MODEL		I _{max} (cd)	204.0	S/MH (C0/180)	14.17	
NOMINAL POWER (W)		LOR (%)	100.0	S/MH (C90/270)	12.41	
RATED VOLTAGE (V)	120	TOTAL FLUX (lm)	1224.7	η UP, DN (C0-180)	25.3, 26.7	
NOMINAL FLUX (lm)	1224.66	CIE CLASS	DIFFUSE	η UP, DN (C180-360)	21.6, 26.5	
LAMPS INSIDE	1	η up (%)	46.9	CIBSE SHR NOM	1.25	
TEST VOLTAGE (V)	120	η down (%)	53.1	CIBSE SHR MAX	1.35	



C Range: 0 - 360DEG
 C Interval: 22.5DEG
 Test Speed: HIGH
 Temperature: 25.2 °C
 Operators: Dano
 Test Date: 2023-05-15

γ Range: 0 - 180DEG
 γ Interval: 1.0DEG
 Test System: EVERFINE GO-R5000_V2 SYSTEM V2.00.459
 Humidity: 55.3%
 Test Distance: 2.900m [K=0.8810]
 Remarks:

ZONAL FLUX DIAGRAM

ZONAL FLUX DIAGRAM:

γ	C0	C45	C90	C135	C180	C225	C270	C315	γ	Φ zone	Φ total	%lum,lamp
10	13.77	6.232	11.86	13.27	6.898	16.97	21.06	11.21	0- 10	0.5580	0.5580	0.05,0.05
20	44.46	23.14	32.62	36.79	50.98	63.33	43.97	25.26	10- 20	7.554	8.112	0.66,0.66
30	78.32	45.08	54.91	61.60	84.73	94.33	64.85	41.05	20- 30	23.51	31.62	2.58,2.58
40	110.7	67.03	75.66	84.64	112.1	120.9	82.32	57.33	30- 40	45.92	77.54	6.33,6.33
50	140.0	86.94	93.65	104.7	134.0	142.1	95.61	71.58	40- 50	72.08	149.6	12.2,12.2
60	165.2	103.5	107.9	120.9	149.3	157.1	104.6	82.97	50- 60	98.49	248.1	20.3,20.3
70	185.2	115.8	117.7	132.4	158.0	165.3	109.3	91.11	60- 70	121.4	369.5	30.2,30.2
80	198.3	123.6	122.6	138.2	160.0	166.7	110.1	95.74	70- 80	137.3	506.8	41.4,41.4
90	203.8	126.3	122.2	138.1	155.7	161.3	105.2	96.81	80- 90	144.0	650.9	53.1,53.1
100	201.2	123.7	117.3	132.1	146.0	150.4	87.99	94.30	90-100	140.1	790.9	64.6,64.6
110	190.3	116.4	107.1	121.2	131.2	135.1	81.85	88.62	100-110	127.4	918.3	75,75
120	172.4	104.7	93.54	106.3	112.4	116.5	71.19	79.75	110-120	107.7	1026	83.8,83.8
130	148.7	89.22	77.34	88.36	90.37	95.47	59.14	68.26	120-130	83.63	1110	90.6,90.6
140	120.7	70.87	59.17	68.35	66.21	72.76	46.23	54.08	130-140	58.45	1168	95.4,95.4
150	89.20	50.63	39.85	47.00	41.52	48.17	33.36	36.57	140-150	35.13	1203	98.2,98.2
160	55.55	30.11	20.78	25.46	18.80	23.20	19.55	18.38	150-160	16.42	1220	99.6,99.6
170	22.84	12.65	5.199	6.919	2.179	4.980	5.202	4.880	160-170	4.715	1224	100,100
180	0	0	0.1083	0.1893	0.1752	0.1860	0.1622	0.1814	170-180	0.3557	1225	100,100
DEG	LUMINOUS INTENSITY:cd									UNIT:lm		

Conical surface Flux(90deg): 110.21 lm

%lum = 9.0%

%lamp = 9.0%

Conical surface Flux(120deg): 248.11 lm

%lum = 20.3%

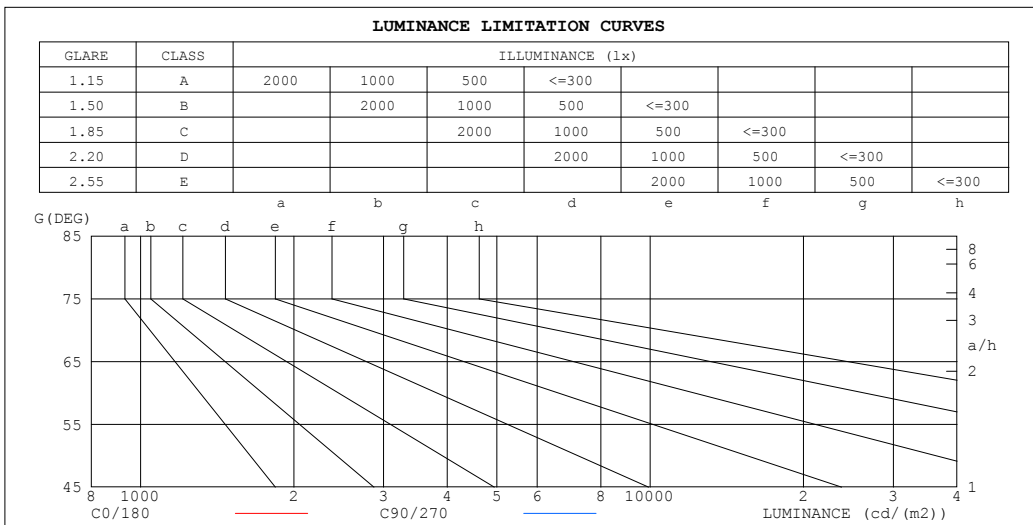
%lamp = 20.3%

C Range: 0 - 360DEG
 C Interval: 22.5DEG
 Test Speed: HIGH
 Temperature:25.2℃
 Operators:Dano
 Test Date:2023-05-15

γ Range: 0 - 180DEG
 γ Interval: 1.0DEG
 Test System:EVERFINE GO-R5000_V2 SYSTEM V2.00.459
 Humidity:55.3%
 Test Distance:2.900m [K=0.8810]
 Remarks:

LUMINANCE LIMITATION CURVES

Test:U:120.1V I:0.1951A P:23.27W PF:0.9933 Freq:60.01Hz Lamp Flux:1224.66x1 lm		
NAME: PT27-4-3x8S-952C5-MVTD-BN 5000K	TYPE:	WEIGHT:
SPEC.:	DIM.:	SERIAL No.:
MFR.: FOSHAN LEDKEY LIGHTING CO.,LTD.	SUR.:	Shielding Angle:



LUMINANCE cd/(m2)		
G (DEG)	C0/180	C90/270
85	1441204	1232108
80	709669	616698
75	462478	407532
70	336446	300670
65	258649	234349
60	205278	188520
55	165961	154172
50	135287	127273
45	110490	105073

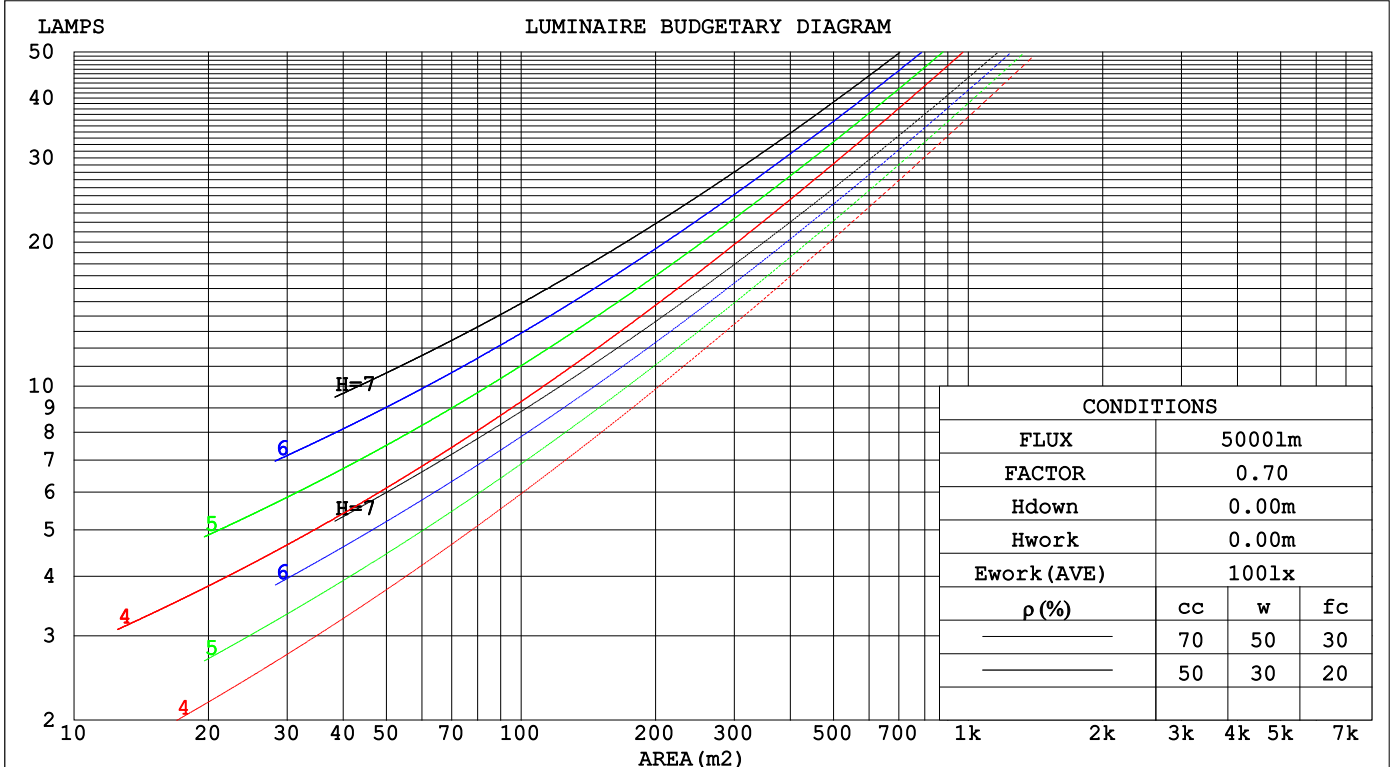
C Range: 0 - 360DEG
 C Interval: 22.5DEG
 Test Speed: HIGH
 Temperature: 25.2°C
 Operators: Dano
 Test Date: 2023-05-15

γ Range: 0 - 180DEG
 γ Interval: 1.0DEG
 Test System: EVERFINE GO-R5000_V2 SYSTEM V2.00.459
 Humidity: 55.3%
 Test Distance: 2.900m [K=0.8810]
 Remarks:

CU AND LUMINAIRE BUDGETARY ESTIMATE DIAGRAM

Test:U:120.1V I:0.1951A P:23.27W PF:0.9933 Freq:60.01Hz Lamp Flux:1224.66x1 lm		
NAME: PT27-4-3x8S-952C5-MVTD-BN 5000K	TYPE:	WEIGHT:
SPEC.:	DIM.:	SERIAL No.:
MFR.: FOSHAN LEDKEY LIGHTING CO.,LTD.	SUR.:	Shielding Angle:

ρ_{cc}	80%			70%			50%			30%			10%			0
ρ_w	50%	30%	10%	50%	30%	10%	50%	30%	10%	50%	30%	10%	50%	30%	10%	0
ρ_{fc}	20%			20%			20%			20%			20%			0
RCR	RCR:Room Cavity Ratio						Coefficients of Utilization(CU)									
0.0	1.08	1.08	1.08	.00	.00	.00	.85	.85	.85	.71	.71	.71	.59	.59	.59	.53
1.0	.85	.79	.74	.78	.73	.68	.65	.61	.57	.54	.50	.47	.43	.40	.38	.32
2.0	.71	.63	.55	.65	.57	.51	.54	.48	.43	.44	.39	.35	.34	.30	.27	.22
3.0	.61	.51	.43	.55	.47	.40	.46	.39	.33	.36	.31	.27	.28	.24	.20	.16
4.0	.52	.42	.35	.48	.39	.32	.39	.32	.26	.31	.26	.21	.24	.20	.16	.12
5.0	.46	.36	.29	.42	.33	.26	.34	.27	.22	.27	.22	.17	.21	.16	.13	.09
6.0	.40	.31	.24	.37	.28	.22	.30	.23	.18	.24	.19	.14	.18	.14	.11	.07
7.0	.36	.27	.20	.33	.25	.19	.27	.20	.15	.22	.16	.12	.17	.12	.09	.06
8.0	.32	.24	.17	.30	.22	.16	.24	.18	.13	.20	.14	.10	.15	.11	.08	.05
9.0	.29	.21	.15	.27	.19	.14	.22	.16	.11	.18	.13	.09	.14	.10	.06	.04
10.0	.27	.19	.13	.24	.17	.12	.20	.14	.10	.16	.11	.08	.13	.09	.06	.03



C Range: 0 - 360DEG
 C Interval: 22.5DEG
 Test Speed: HIGH
 Temperature:25.2°C
 Operators:Dano
 Test Date:2023-05-15

γ Range: 0 - 180DEG
 γ Interval: 1.0DEG
 Test System:EVERFINE GO-R5000_V2 SYSTEM V2.00.459
 Humidity:55.3%
 Test Distance:2.900m [K=0.8810]
 Remarks:

WEC AND CCEC

Test:U:120.1V I:0.1951A P:23.27W PF:0.9933 Freq:60.01Hz Lamp Flux:1224.66x1 lm		
NAME: PT27-4-3x8S-952C5-MVTD-BN 5000K	TYPE:	WEIGHT:
SPEC.:	DIM.:	SERIAL No.:
MFR.: FOSHAN LEDKEY LIGHTING CO.,LTD.	SUR.:	Shielding Angle:

ρ _{cc}	80%			70%			50%			30%			10%			0
ρ _w	50%	30%	10%	50%	30%	10%	50%	30%	10%	50%	30%	10%	50%	30%	10%	0
ρ _{fc}	20%			20%			20%			20%			20%			0
RCR	RCR:Room Cavity Ratio						Wall Exitance Coefficients(WEC)									
0.0																
1.0	.448	.255	.081	.426	.243	.077	.386	.221	.071	.349	.201	.065	.315	.182	.059	
2.0	.368	.202	.062	.348	.192	.059	.311	.173	.054	.277	.155	.049	.246	.139	.044	
3.0	.318	.169	.051	.300	.160	.048	.266	.144	.044	.234	.128	.039	.205	.114	.035	
4.0	.281	.146	.043	.264	.138	.041	.233	.124	.037	.204	.110	.033	.177	.096	.029	
5.0	.252	.128	.037	.237	.121	.035	.208	.108	.032	.181	.096	.028	.157	.084	.025	
6.0	.228	.114	.033	.214	.108	.031	.188	.096	.028	.163	.085	.025	.140	.074	.022	
7.0	.209	.103	.029	.196	.098	.028	.172	.087	.025	.149	.076	.022	.127	.066	.019	
8.0	.192	.094	.026	.181	.089	.025	.158	.079	.023	.137	.069	.020	.117	.060	.017	
9.0	.178	.086	.024	.167	.082	.023	.146	.072	.021	.127	.063	.018	.108	.055	.016	
10.0	.166	.080	.022	.156	.075	.021	.136	.067	.019	.118	.058	.017	.100	.050	.014	

ρ _{cc}	80%			70%			50%			30%			10%			0
ρ _w	50%	30%	10%	50%	30%	10%	50%	30%	10%	50%	30%	10%	50%	30%	10%	0
ρ _{fc}	20%			20%			20%			20%			20%			0
RCR	RCR:Room Cavity Ratio						Ceiling Cavity Exitance Coefficients(CCEC)									
0.0	.547	.547	.547	.468	.468	.468	.319	.319	.319	.183	.183	.183	.059	.059	.059	
1.0	.550	.515	.483	.470	.442	.416	.322	.304	.288	.185	.176	.167	.059	.057	.054	
2.0	.545	.494	.451	.467	.425	.390	.320	.294	.272	.184	.171	.159	.059	.055	.052	
3.0	.538	.479	.432	.461	.413	.374	.317	.287	.263	.183	.168	.155	.059	.054	.051	
4.0	.530	.468	.420	.455	.404	.364	.313	.282	.257	.181	.165	.152	.058	.054	.050	
5.0	.523	.459	.411	.449	.397	.358	.309	.277	.253	.179	.163	.150	.058	.053	.049	
6.0	.515	.451	.405	.443	.391	.353	.306	.274	.250	.177	.161	.148	.057	.053	.049	
7.0	.508	.445	.401	.437	.386	.349	.302	.271	.248	.176	.159	.147	.057	.052	.049	
8.0	.502	.440	.398	.432	.382	.347	.299	.268	.246	.174	.158	.147	.056	.052	.049	
9.0	.495	.436	.395	.427	.378	.345	.296	.266	.245	.172	.157	.146	.056	.052	.048	
10.0	.489	.432	.393	.422	.375	.343	.293	.264	.244	.171	.156	.145	.055	.051	.048	

C Range: 0 - 360DEG
 C Interval: 22.5DEG
 Test Speed: HIGH
 Temperature:25.2℃
 Operators:Dano
 Test Date:2023-05-15

γ Range: 0 - 180DEG
 γ Interval: 1.0DEG
 Test System:EVERFINE GO-R5000_V2 SYSTEM V2.00.459
 Humidity:55.3%
 Test Distance:2.900m [K=0.8810]
 Remarks:

UGR(Unified Glare Rating) Table

Test:U:120.1V I:0.1951A P:23.27W PF:0.9933 Freq:60.01Hz										
Lamp Flux:1224.66x1 lm										
NAME: PT27-4-3x8S-952C5-MVTD-BN 5000K					TYPE:			WEIGHT:		
SPEC.:					DIM.:			SERIAL No.:		
MFR.: FOSHAN LEDKEY LIGHTING CO.,LTD.					SUR.:			Shielding Angle:		
ceiling/cavity	0.7	0.7	0.5	0.5	0.3	0.7	0.7	0.5	0.5	0.3
walls	0.5	0.3	0.5	0.3	0.3	0.5	0.3	0.5	0.3	0.3
working plane	0.2	0.2	0.2	0.2	0.2	0.2	0.2	0.2	0.2	0.2
Room dimensions	Viewed crosswise					Viewed endwise				
x = 2H y = 2H	24.4	26.6	26.1	28.4	30.8	25.6	27.9	27.4	29.7	32.0
3H	28.4	30.5	30.2	32.3	34.7	29.1	31.1	30.8	33.0	35.4
4H	30.5	32.5	32.3	34.3	36.7	30.8	32.8	32.6	34.7	37.1
6H	32.8	34.6	34.6	36.5	38.9	32.8	34.6	34.6	36.5	38.9
8H	34.0	35.8	35.8	37.7	40.1	33.8	35.6	35.6	37.5	40.0
12H	35.4	37.1	37.2	39.0	41.5	35.0	36.7	36.8	38.6	41.1
4H 2H	24.6	26.6	26.4	28.5	30.9	26.2	28.2	28.0	30.1	32.5
3H	28.9	30.6	30.7	32.5	35.0	30.0	31.7	31.8	33.6	36.1
4H	31.1	32.7	33.0	34.7	37.2	32.0	33.6	33.9	35.5	38.0
6H	33.6	35.1	35.5	37.0	39.5	34.1	35.6	36.0	37.5	40.0
8H	35.0	36.3	36.9	38.3	40.8	35.2	36.6	37.1	38.6	41.1
12H	36.5	37.8	38.4	39.7	42.3	36.5	37.8	38.4	39.8	42.3
8H 4H	31.5	32.8	33.4	34.8	37.3	32.6	33.9	34.5	35.9	38.4
6H	34.2	35.4	36.1	37.4	40.0	35.1	36.2	37.0	38.2	40.8
8H	35.8	36.8	37.7	38.8	41.4	36.4	37.5	38.4	39.5	42.1
12H	37.5	38.5	39.5	40.5	43.2	38.0	38.9	39.9	40.9	43.6
12H 4H	31.5	32.8	33.5	34.8	37.4	32.7	33.9	34.6	35.9	38.5
6H	34.3	35.4	36.3	37.4	40.0	35.3	36.4	37.3	38.4	41.0
8H	36.0	37.0	38.0	39.0	41.6	36.8	37.8	38.8	39.8	42.5
CIE190: 2010										

CIE190: 2010
Area: 0.001257 m2

C Range: 0 - 360DEG
C Interval: 22.5DEG
Test Speed: HIGH
Temperature:25.2℃
Operators:Dano
Test Date:2023-05-15

γ Range: 0 - 180DEG
γ Interval: 1.0DEG
Test System:EVERFINE GO-R5000_V2 SYSTEM V2.00.459
Humidity:55.3%
Test Distance:2.900m [K=0.8810]
Remarks:

UTILIZATION FACTORS TABLE

Test:U:120.1V I:0.1951A P:23.27W PF:0.9933 Freq:60.01Hz Lamp Flux:1224.66x1 lm		
NAME: PT27-4-3x8S-952C5-MVTD-BN 5000K	TYPE:	WEIGHT:
SPEC.:	DIM.:	SERIAL No.:
MFR.: FOSHAN LEDKEY LIGHTING CO.,LTD.	SUR.:	Shielding Angle:

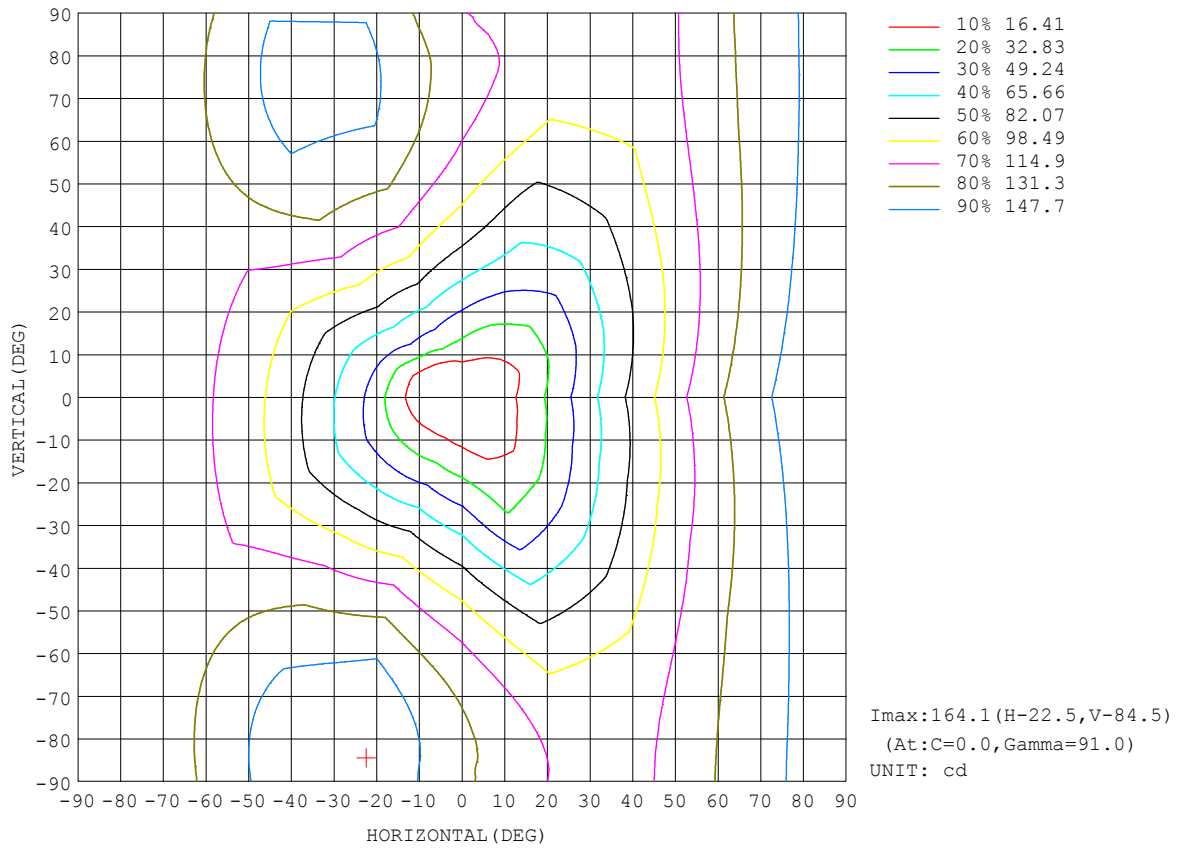
REFLECTANCE										
Ceiling	0.8	0.8	0.8	0.7	0.7	0.7	0.5	0.5	0.5	0
Walls	0.7	0.5	0.3	0.7	0.5	0.3	0.7	0.5	0.3	0
Working plane	0.2	0.2	0.2	0.2	0.2	0.2	0.2	0.2	0.2	0
ROOM INDEX	UTILIZATION FACTORS (PERCENT) $k(RI) \times RCR = 5$									
k = 0.60	34	21	13	32	20	13	29	18	12	4
0.80	42	28	19	40	26	18	35	24	16	7
1.00	49	34	25	46	32	24	40	31	21	10
1.25	56	41	31	52	39	29	45	34	26	13
1.50	62	47	36	57	44	34	49	38	30	15
2.00	70	56	45	65	52	43	55	45	37	20
2.50	75	62	52	69	58	49	59	50	43	23
3.00	79	67	58	73	63	54	62	54	47	26
4.00	85	74	66	78	69	61	66	59	53	30
5.00	88	79	72	82	74	67	69	63	57	33
ROOM INDEX	UF(total)									Direct
According to DIN EN 13032-2 2004			Suspended				SHRNOM = 1.25			

C Range: 0 - 360DEG
 C Interval: 22.5DEG
 Test Speed: HIGH
 Temperature:25.2°C
 Operators:Dano
 Test Date:2023-05-15

γ Range: 0 - 180DEG
 γ Interval: 1.0DEG
 Test System:EVERFINE GO-R5000_V2 SYSTEM V2.00.459
 Humidity:55.3%
 Test Distance:2.900m [K=0.8810]
 Remarks:

ISOCANDELA DIAGRAM

Test:U:120.1V I:0.1951A P:23.27W PF:0.9933 Freq:60.01Hz Lamp Flux:1224.66x1 lm		
NAME: PT27-4-3x8S-952C5-MVTD-BN 5000K	TYPE:	WEIGHT:
SPEC.:	DIM.:	SERIAL No.:
MFR.: FOSHAN LEDKEY LIGHTING CO.,LTD.	SUR.:	Shielding Angle:

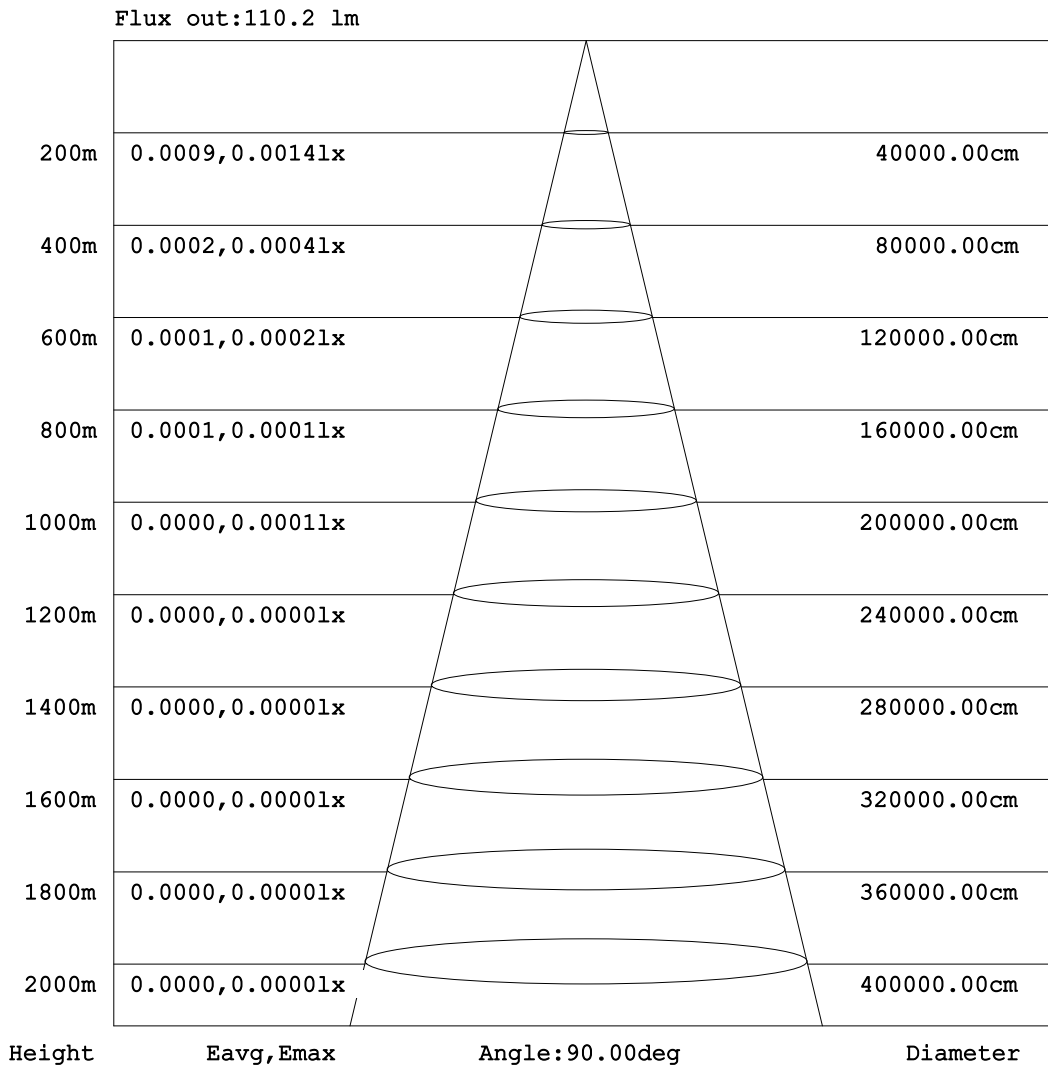


C Range: 0 - 360DEG
 C Interval: 22.5DEG
 Test Speed: HIGH
 Temperature:25.2°C
 Operators:Dano
 Test Date:2023-05-15

γ Range: 0 - 180DEG
 γ Interval: 1.0DEG
 Test System:EVERFINE GO-R5000_V2 SYSTEM V2.00.459
 Humidity:55.3%
 Test Distance:2.900m [K=0.8810]
 Remarks:

AAI Figure

Test:U:120.1V I:0.1951A P:23.27W PF:0.9933 Freq:60.01Hz Lamp Flux:1224.66x1 lm		
NAME: PT27-4-3x8S-952C5-MVTD-BN 5000K	TYPE:	WEIGHT:
SPEC.:	DIM.:	SERIAL No.:
MFR.: FOSHAN LEDKEY LIGHTING CO.,LTD.	SUR.:	Shielding Angle:



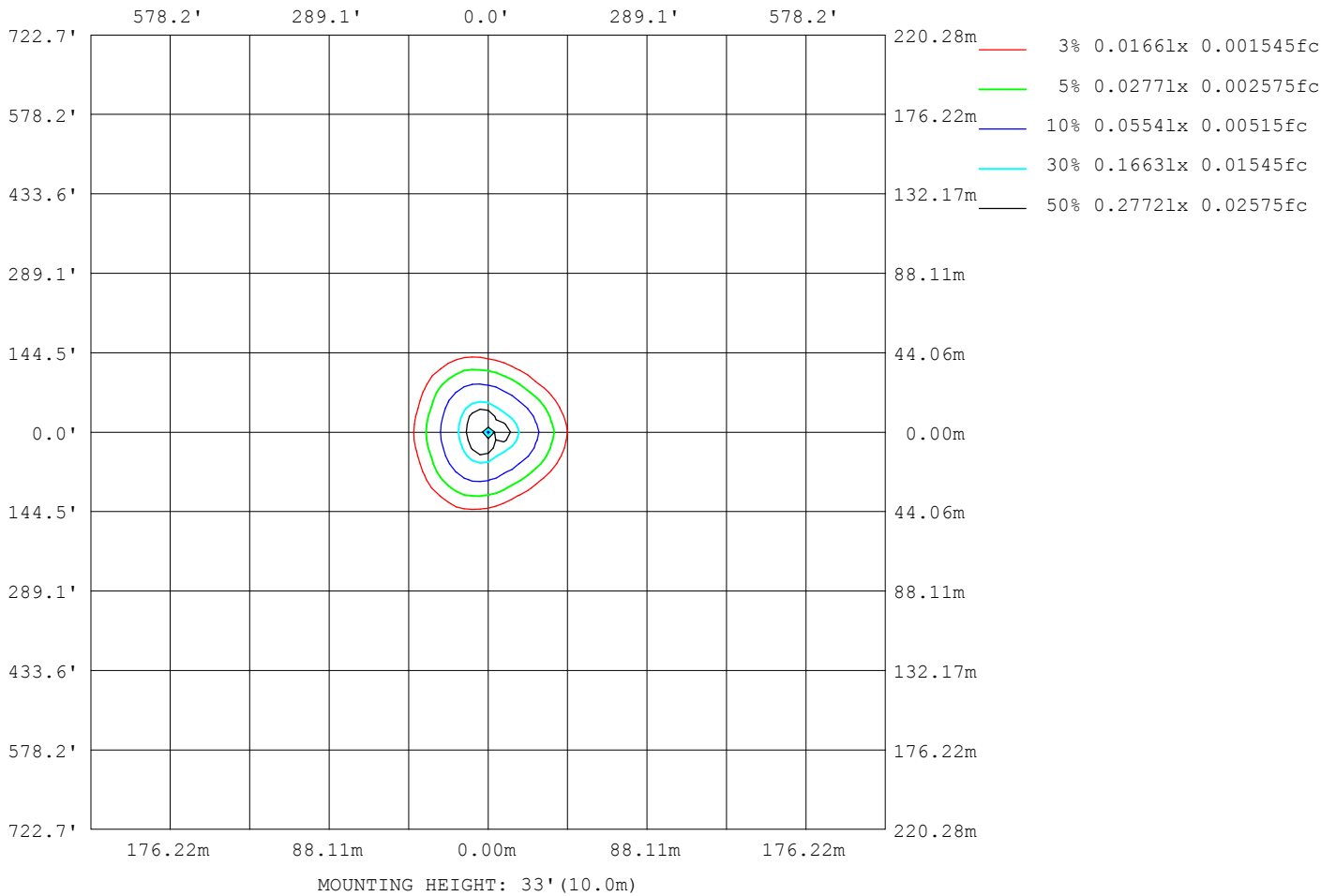
Note:The Curves indicate the illuminated area and the average illumination when the luminaire is at different distance.

C Range: 0 - 360DEG
 C Interval: 22.5DEG
 Test Speed: HIGH
 Temperature:25.2℃
 Operators:Dano
 Test Date:2023-05-15

γ Range: 0 - 180DEG
 γ Interval: 1.0DEG
 Test System:EVERFINE GO-R5000_V2 SYSTEM V2.00.459
 Humidity:55.3%
 Test Distance:2.900m [K=0.8810]
 Remarks:

ISOLUX DIAGRAM

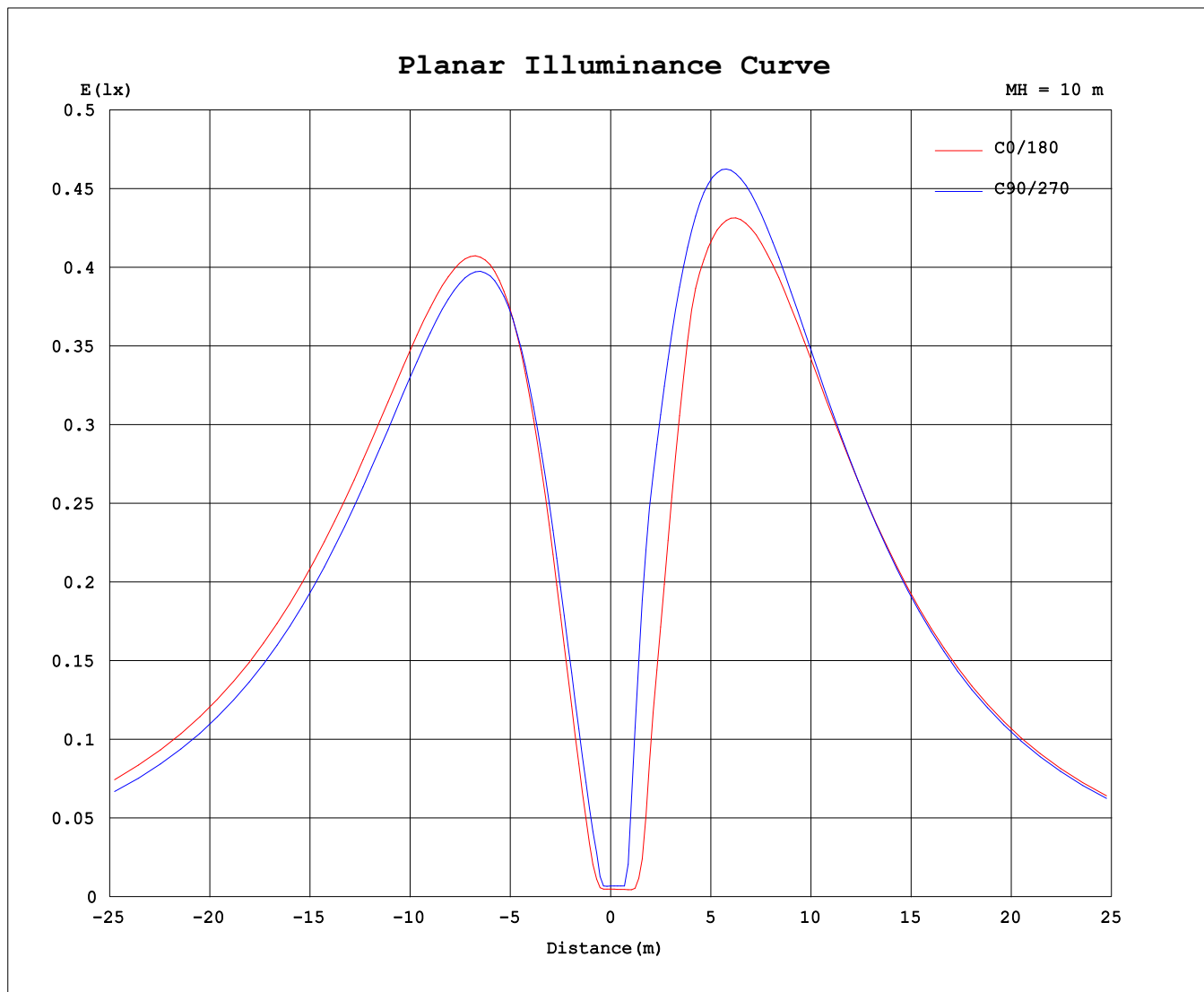
Test:U:120.1V I:0.1951A P:23.27W PF:0.9933 Freq:60.01Hz Lamp Flux:1224.66x1 lm		
NAME: PT27-4-3x8S-952C5-MVTD-BN 5000K	TYPE:	WEIGHT:
SPEC.:	DIM.:	SERIAL No.:
MFR.: FOSHAN LEDKEY LIGHTING CO.,LTD.	SUR.:	Shielding Angle:



C Range: 0 - 360DEG
 C Interval: 22.5DEG
 Test Speed: HIGH
 Temperature:25.2°C
 Operators:Dano
 Test Date:2023-05-15

γ Range: 0 - 180DEG
 γ Interval: 1.0DEG
 Test System:EVERFINE GO-R5000_V2 SYSTEM V2.00.459
 Humidity:55.3%
 Test Distance:2.900m [K=0.8810]
 Remarks:

Planar Illuminance Curve



C Range: 0 - 360DEG
C Interval: 22.5DEG
Test Speed: HIGH
Temperature: 25.2°C
Operators: Dano
Test Date: 2023-05-15

γ Range: 0 - 180DEG
γ Interval: 1.0DEG
Test System: EVERFINE GO-R5000_V2 SYSTEM V2.00.459
Humidity: 55.3%
Test Distance: 2.900m [K=0.8810]
Remarks:

LUMINOUS DISTRIBUTION INTENSITY DATA

Test:U:120.1V I:0.1951A P:23.27W PF:0.9933 Freq:60.01Hz Lamp Flux:1224.66x1 lm		
NAME: PT27-4-3x8S-952C5-MVTD-BN 5000K	TYPE:	WEIGHT:
SPEC.:	DIM.:	SERIAL No.:
MFR.: FOSHAN LEDKEY LIGHTING CO.,LTD.	SUR.:	Shielding Angle:

Table--1

UNIT: cd

C (DEG) γ (DEG)	0	22.5	45	67.5	90	112.5	135	157.5	180	202.5	225	247.5	270	292.5	315	337.5			
0	0.64	0.64	0.64	0.64	0.64	0.64	0.64	0.64	0.64	0.64	0.64	0.64	0.64	0.64	0.64	0.64			
5	2.69	1.85	1.04	2.30	3.83	4.63	3.02	0.44	0.61	0.59	0.60	0.65	1.92	3.11	2.90	2.16			
10	13.8	10.49	6.23	7.69	11.9	14.1	13.3	9.57	6.90	9.19	17.0	21.8	21.1	15.1	11.2	7.95			
15	28.2	22.1	14.0	15.3	21.8	25.8	24.5	21.5	28.2	30.7	45.2	42.7	32.8	23.4	18.1	15.3			
20	44.5	35.4	23.1	22.3	32.6	38.4	36.8	34.0	51.0	55.4	63.3	57.8	44.0	32.4	25.3	25.0			
25	61.4	49.4	33.9	27.9	43.8	51.5	49.3	45.0	69.7	70.7	79.3	72.4	54.8	41.4	33.0	35.3			
30	78.3	63.5	45.1	33.9	54.9	64.3	61.6	55.3	84.7	84.3	94.3	86.0	64.9	49.2	41.1	45.7			
35	94.8	77.2	56.2	42.8	65.6	76.7	73.4	65.0	99.0	97.0	108	98.6	74.1	55.2	49.3	55.8			
40	111	90.5	67.0	53.2	75.7	88.5	84.6	74.1	112	108	121	110	82.3	59.9	57.3	65.5			
45	126	103	77.3	63.1	85.0	99.5	95.1	82.3	124	119	132	120	89.5	64.2	64.8	74.7			
50	140	115	86.9	72.6	93.6	110	105	89.7	134	127	142	129	95.6	69.6	71.6	83.2			
55	153	126	95.7	81.3	101	119	113	96.1	143	134	150	136	101	75.9	77.7	91.1			
60	165	135	103	89.2	108	127	121	101	149	140	157	142	105	81.6	83.0	98.2			
65	176	144	110	96.2	113	134	127	106	154	144	162	147	107	86.2	87.5	104			
70	185	151	116	102	118	139	132	109	158	147	165	150	109	89.8	91.1	110			
75	193	158	120	107	121	143	136	111	160	148	167	151	110	92.4	93.9	114			
80	198	162	124	110	123	145	138	112	160	147	167	151	110	93.8	95.7	118			
85	202	165	126	112	123	146	139	112	159	145	165	149	108	94.0	96.7	120			
90	204	167	126	112	122	145	138	110	156	142	161	146	105	92.9	96.8	121			
95	204	167	126	110	121	143	136	108	151	138	157	141	93.2	90.6	96.0	121			
100	201	165	124	107	117	139	132	105	146	132	150	136	88.0	87.5	94.3	120			
105	197	161	121	103	113	134	127	100	139	126	143	129	85.9	83.8	91.8	117			
110	190	156	116	98.0	107	127	121	95.0	131	119	135	122	81.8	79.2	88.6	114			
115	182	150	111	92.3	101	119	114	89.0	122	110	126	113	76.7	73.9	84.6	109			
120	172	142	105	85.7	93.5	111	106	82.4	112	102	116	105	71.2	68.2	79.8	103			
125	161	133	97.4	78.4	85.7	102	97.7	75.2	102	92.4	106	95.5	65.4	62.0	74.3	96.8			
130	149	123	89.2	70.6	77.3	91.8	88.4	67.6	90.4	82.4	95.5	85.9	59.1	55.1	68.3	89.5			
135	135	112	80.4	62.6	68.5	81.4	78.6	59.5	78.5	71.9	84.3	76.1	52.7	48.3	61.5	81.3			
140	121	100.0	70.9	54.7	59.2	70.7	68.3	51.1	66.2	60.9	72.8	66.1	46.2	41.0	54.1	72.2			
145	105	87.3	60.9	46.8	49.6	59.6	57.8	42.5	53.8	49.5	60.7	56.2	39.7	33.2	45.7	62.0			
150	89.2	73.9	50.6	38.5	39.9	48.4	47.0	34.0	41.5	38.1	48.2	45.9	33.4	25.3	36.6	50.8			
155	72.5	60.1	40.3	30.1	30.2	37.1	36.1	25.6	29.7	27.1	35.4	35.4	26.8	18.7	27.2	39.2			
160	55.6	46.0	30.1	21.7	20.8	26.1	25.5	17.7	18.8	17.1	23.2	24.9	19.5	13.8	18.4	27.9			
165	38.7	32.1	20.7	13.6	12.2	15.7	15.5	10.6	9.13	8.51	13.0	14.9	12.0	8.48	11.6	18.3			
170	22.8	19.1	12.7	6.66	5.20	6.93	6.92	4.45	2.18	2.08	4.98	6.36	5.20	3.14	4.88	11.3			
175	9.26	7.98	5.51	2.56	0.76	0.74	0.80	0.41	0.33	0.31	0.42	0.65	0.50	0.20	0.23	1.06			
180	0.00	0.00	0.00	0.00	0.11	0.16	0.19	0.17	0.18	0.17	0.19	0.18	0.16	0.17	0.18	0.19			

C Range: 0 - 360DEG
 C Interval: 22.5DEG
 Test Speed: HIGH
 Temperature:25.2℃
 Operators:Dano
 Test Date:2023-05-15

γ Range: 0 - 180DEG
 γ Interval: 1.0DEG
 Test System:EVERFINE GO-R5000_V2 SYSTEM V2.00.459
 Humidity:55.3%
 Test Distance:2.900m [K=0.8810]
 Remarks: