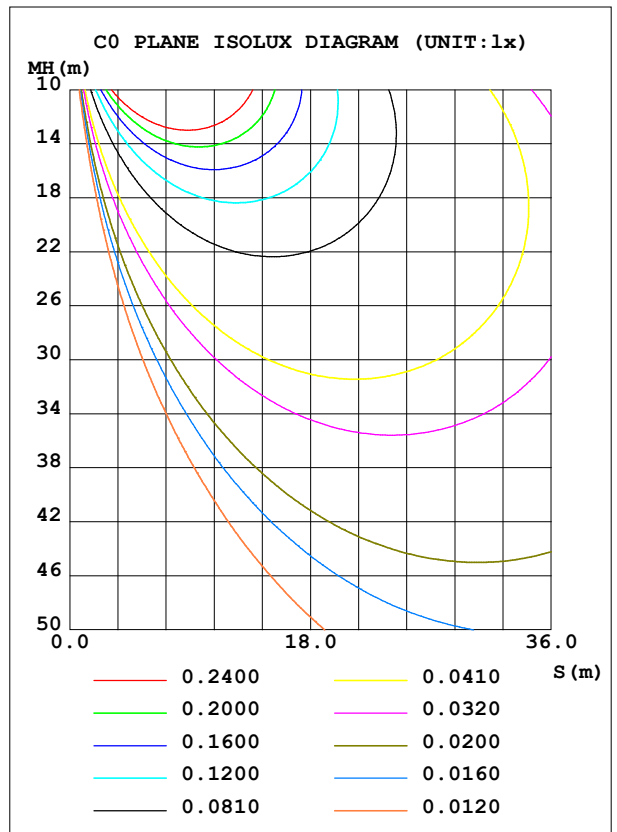
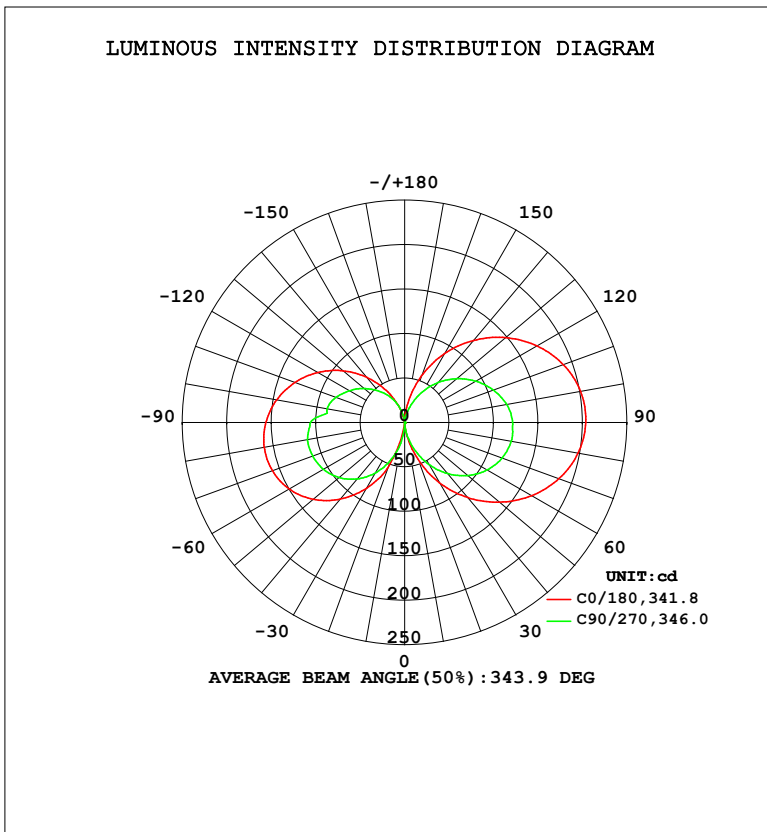


LUMINAIRE PHOTOMETRIC TEST REPORT

Test:U:120.0V I:0.1966A P:23.43W PF:0.9933 Freq:60.01Hz Lamp Flux:1223.09x1 lm		
NAME: PT27-4-3x8S-952C5-MVTD-BN 4000K	TYPE:	WEIGHT:
SPEC.:	DIM.:	SERIAL No.:
MFR.: FOSHAN LEDKEY LIGHTING CO.,LTD.	SUR.:	Shielding Angle:

DATA OF LAMP		PHOTOMETRIC DATA				Eff: 52.19 lm/W
MODEL		I <sub>max</sub> (cd)	203.8	S/MH (C0/180)	14.17	
NOMINAL POWER (W)		LOR (%)	100.0	S/MH (C90/270)	12.41	
RATED VOLTAGE (V)	120	TOTAL FLUX (lm)	1223.1	η UP, DN (C0-180)	25.2, 26.6	
NOMINAL FLUX (lm)	1223.09	CIE CLASS	DIFFUSE	η UP, DN (C180-360)	21.7, 26.6	
LAMPS INSIDE	1	η up (%)	46.8	CIBSE SHR NOM	1.25	
TEST VOLTAGE (V)	120	η down (%)	53.2	CIBSE SHR MAX	1.35	



C Range: 0 - 360DEG  
 C Interval: 22.5DEG  
 Test Speed: HIGH  
 Temperature: 25.2 °C  
 Operators: Dano  
 Test Date: 2023-05-15

γ Range: 0 - 180DEG  
 γ Interval: 1.0DEG  
 Test System: EVERFINE GO-R5000\_V2 SYSTEM V2.00.459  
 Humidity: 55.3%  
 Test Distance: 2.900m [K=0.8810]  
 Remarks:

ZONAL FLUX DIAGRAM

ZONAL FLUX DIAGRAM:

γ	C0	C45	C90	C135	C180	C225	C270	C315	γ	Φ zone	Φ total	%lum,lamp
10	13.70	6.178	11.75	13.20	6.913	18.08	21.54	11.24	0- 10	0.5675	0.5675	0.05,0.05
20	44.34	23.01	32.31	36.42	51.41	63.92	44.35	25.21	10- 20	7.578	8.145	0.67,0.67
30	78.09	44.80	54.45	61.04	85.15	95.10	65.35	40.93	20- 30	23.50	31.65	2.59,2.59
40	110.3	66.63	75.10	83.90	112.6	121.9	83.03	57.06	30- 40	45.88	77.53	6.34,6.34
50	139.6	86.51	92.97	103.8	134.5	143.3	96.49	71.21	40- 50	72.02	149.5	12.2,12.2
60	164.9	103.0	107.1	119.9	149.9	158.5	105.6	82.45	50- 60	98.40	247.9	20.3,20.3
70	184.9	115.4	116.9	131.3	158.5	166.9	110.2	90.52	60- 70	121.2	369.2	30.2,30.2
80	198.1	123.1	121.7	137.1	160.4	168.2	111.0	95.08	70- 80	137.2	506.4	41.4,41.4
90	203.7	125.7	121.5	137.0	156.2	162.8	106.1	96.11	80- 90	143.9	650.3	53.2,53.2
100	200.9	123.2	116.7	131.1	146.3	151.7	88.71	93.69	90-100	139.9	790.2	64.6,64.6
110	190.2	115.8	106.4	120.2	131.6	136.2	82.46	87.93	100-110	127.2	917.3	75,75
120	172.2	104.2	92.90	105.4	112.7	117.4	71.63	79.15	110-120	107.5	1025	83.8,83.8
130	148.6	88.91	76.79	87.59	90.59	96.25	59.54	67.76	120-130	83.47	1108	90.6,90.6
140	120.5	70.61	58.75	67.75	66.33	73.34	46.55	53.73	130-140	58.33	1167	95.4,95.4
150	89.08	50.44	39.61	46.60	41.55	48.49	33.57	36.26	140-150	35.06	1202	98.2,98.2
160	55.53	30.04	20.67	25.25	18.83	23.34	19.65	18.22	150-160	16.39	1218	99.6,99.6
170	22.79	12.59	5.175	6.839	2.171	4.986	5.225	4.878	160-170	4.702	1223	100,100
180	0	0	0.1037	0.1916	0.1745	0.1870	0.1623	0.1831	170-180	0.3547	1223	100,100
DEG	LUMINOUS INTENSITY:cd									UNIT:lm		

Conical surface Flux(90deg): 110.18 lm

%lum = 9.0%

%lamp = 9.0%

Conical surface Flux(120deg): 247.94 lm

%lum = 20.3%

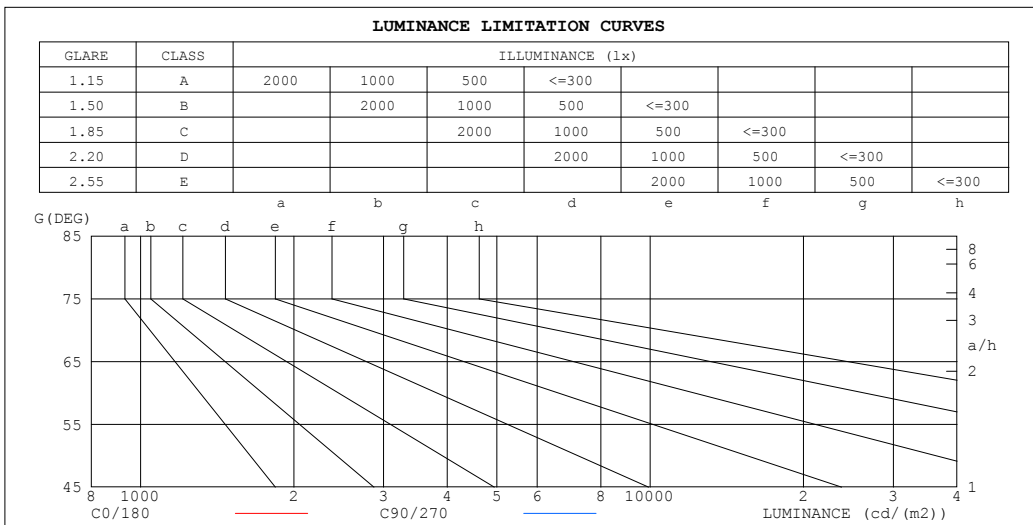
%lamp = 20.3%

C Range: 0 - 360DEG  
 C Interval: 22.5DEG  
 Test Speed: HIGH  
 Temperature:25.2℃  
 Operators:Dano  
 Test Date:2023-05-15

γ Range: 0 - 180DEG  
 γ Interval: 1.0DEG  
 Test System:EVERFINE GO-R5000\_V2 SYSTEM V2.00.459  
 Humidity:55.3%  
 Test Distance:2.900m [K=0.8810]  
 Remarks:

LUMINANCE LIMITATION CURVES

Test:U:120.0V I:0.1966A P:23.43W PF:0.9933 Freq:60.01Hz Lamp Flux:1223.09x1 lm		
NAME: PT27-4-3x8S-952C5-MVTD-BN 4000K	TYPE:	WEIGHT:
SPEC.:	DIM.:	SERIAL No.:
MFR.: FOSHAN LEDKEY LIGHTING CO.,LTD.	SUR.:	Shielding Angle:



LUMINANCE cd/(m2)		
G (DEG)	C0/180	C90/270
85	1436038	1223851
80	706945	612226
75	460874	404600
70	334996	298402
65	257466	232701
60	204390	187130
55	165134	153115
50	134609	126319
45	109927	104287

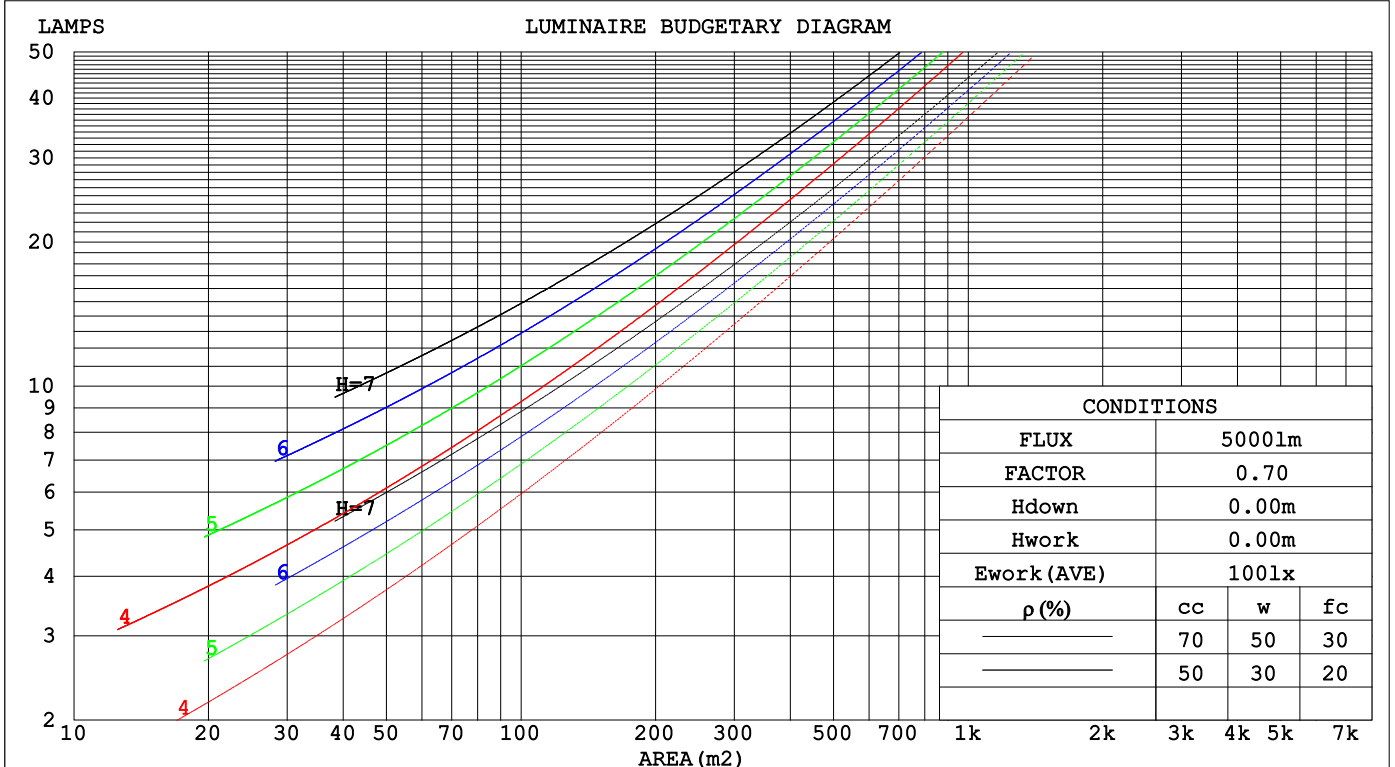
C Range: 0 - 360DEG  
 C Interval: 22.5DEG  
 Test Speed: HIGH  
 Temperature:25.2℃  
 Operators:Dano  
 Test Date:2023-05-15

γ Range: 0 - 180DEG  
 γ Interval: 1.0DEG  
 Test System:EVERFINE GO-R5000\_V2 SYSTEM V2.00.459  
 Humidity:55.3%  
 Test Distance:2.900m [K=0.8810]  
 Remarks:

**CU AND LUMINAIRE BUDGETARY ESTIMATE DIAGRAM**

Test:U:120.0V I:0.1966A P:23.43W PF:0.9933 Freq:60.01Hz Lamp Flux:1223.09x1 lm		
NAME: PT27-4-3x8S-952C5-MVTD-BN 4000K	TYPE:	WEIGHT:
SPEC.:	DIM.:	SERIAL No.:
MFR.: FOSHAN LEDKEY LIGHTING CO.,LTD.	SUR.:	Shielding Angle:

$\rho_{cc}$	80%			70%			50%			30%			10%			0
$\rho_w$	50%	30%	10%	50%	30%	10%	50%	30%	10%	50%	30%	10%	50%	30%	10%	0
$\rho_{fc}$	20%			20%			20%			20%			20%			0
RCR	RCR:Room Cavity Ratio						Coefficients of Utilization(CU)									
0.0	1.08	1.08	1.08	.00	.00	.00	.85	.85	.85	.72	.72	.72	.59	.59	.59	.53
1.0	.85	.79	.74	.78	.73	.68	.65	.61	.57	.54	.50	.47	.43	.40	.38	.32
2.0	.71	.63	.55	.65	.57	.51	.54	.48	.43	.44	.39	.35	.34	.30	.27	.22
3.0	.61	.51	.43	.55	.47	.40	.46	.39	.33	.37	.31	.27	.28	.24	.20	.16
4.0	.52	.42	.35	.48	.39	.32	.39	.32	.26	.31	.26	.21	.24	.20	.16	.12
5.0	.46	.36	.29	.42	.33	.26	.34	.27	.22	.27	.22	.17	.21	.16	.13	.09
6.0	.40	.31	.24	.37	.28	.22	.30	.23	.18	.24	.19	.14	.18	.14	.11	.07
7.0	.36	.27	.20	.33	.25	.19	.27	.20	.15	.22	.16	.12	.17	.12	.09	.06
8.0	.32	.24	.17	.30	.22	.16	.24	.18	.13	.20	.14	.10	.15	.11	.08	.05
9.0	.29	.21	.15	.27	.19	.14	.22	.16	.11	.18	.13	.09	.14	.10	.06	.04
10.0	.27	.19	.13	.24	.17	.12	.20	.14	.10	.16	.11	.08	.13	.09	.06	.03



C Range: 0 - 360DEG  
 C Interval: 22.5DEG  
 Test Speed: HIGH  
 Temperature:25.2°C  
 Operators:Dano  
 Test Date:2023-05-15

$\gamma$  Range: 0 - 180DEG  
 $\gamma$  Interval: 1.0DEG  
 Test System:EVERFINE GO-R5000\_V2 SYSTEM V2.00.459  
 Humidity:55.3%  
 Test Distance:2.900m [K=0.8810]  
 Remarks:

WEC AND CCEC

Test:U:120.0V I:0.1966A P:23.43W PF:0.9933 Freq:60.01Hz Lamp Flux:1223.09x1 lm		
NAME: PT27-4-3x8S-952C5-MVTD-BN 4000K	TYPE:	WEIGHT:
SPEC.:	DIM.:	SERIAL No.:
MFR.: FOSHAN LEDKEY LIGHTING CO.,LTD.	SUR.:	Shielding Angle:

ρ <sub>cc</sub>	80%			70%			50%			30%			10%			0
ρ <sub>w</sub>	50%	30%	10%	50%	30%	10%	50%	30%	10%	50%	30%	10%	50%	30%	10%	0
ρ <sub>fc</sub>	20%			20%			20%			20%			20%			0
RCR	RCR:Room Cavity Ratio						Wall Exitance Coefficients(WEC)									
0.0																
1.0	.448	.255	.081	.426	.243	.077	.386	.221	.071	.349	.201	.065	.315	.182	.059	
2.0	.368	.202	.062	.348	.192	.059	.311	.173	.054	.277	.156	.049	.246	.139	.044	
3.0	.318	.169	.051	.300	.160	.048	.266	.144	.044	.234	.128	.039	.205	.114	.035	
4.0	.281	.146	.043	.264	.138	.041	.233	.124	.037	.204	.110	.033	.177	.096	.029	
5.0	.252	.128	.037	.237	.121	.035	.208	.108	.032	.181	.096	.028	.157	.084	.025	
6.0	.228	.114	.033	.214	.108	.031	.188	.096	.028	.163	.085	.025	.140	.074	.022	
7.0	.209	.103	.029	.196	.098	.028	.172	.087	.025	.149	.076	.022	.128	.066	.019	
8.0	.192	.094	.026	.181	.089	.025	.158	.079	.023	.137	.069	.020	.117	.060	.017	
9.0	.178	.086	.024	.167	.082	.023	.146	.072	.021	.127	.063	.018	.108	.055	.016	
10.0	.166	.080	.022	.156	.075	.021	.136	.067	.019	.118	.058	.017	.100	.050	.014	

ρ <sub>cc</sub>	80%			70%			50%			30%			10%			0
ρ <sub>w</sub>	50%	30%	10%	50%	30%	10%	50%	30%	10%	50%	30%	10%	50%	30%	10%	0
ρ <sub>fc</sub>	20%			20%			20%			20%			20%			0
RCR	RCR:Room Cavity Ratio						Ceiling Cavity Exitance Coefficients(CCEC)									
0.0	.547	.547	.547	.468	.468	.468	.319	.319	.319	.183	.183	.183	.059	.059	.059	
1.0	.550	.515	.483	.470	.442	.416	.322	.304	.288	.185	.176	.167	.059	.057	.054	
2.0	.545	.494	.451	.466	.425	.390	.320	.294	.272	.184	.171	.159	.059	.055	.052	
3.0	.538	.479	.432	.461	.413	.374	.317	.287	.263	.183	.168	.155	.059	.054	.051	
4.0	.530	.467	.419	.455	.404	.364	.313	.281	.257	.181	.165	.152	.058	.054	.050	
5.0	.523	.458	.411	.449	.397	.358	.309	.277	.253	.179	.163	.150	.058	.053	.049	
6.0	.515	.451	.405	.443	.391	.353	.306	.274	.250	.177	.161	.148	.057	.053	.049	
7.0	.508	.445	.401	.437	.386	.349	.302	.270	.248	.175	.159	.147	.057	.052	.049	
8.0	.501	.440	.398	.432	.382	.347	.299	.268	.246	.174	.158	.147	.056	.052	.049	
9.0	.495	.435	.395	.427	.378	.345	.296	.266	.245	.172	.157	.146	.056	.051	.048	
10.0	.489	.432	.393	.422	.375	.343	.293	.264	.244	.171	.156	.145	.055	.051	.048	

C Range: 0 - 360DEG  
 C Interval: 22.5DEG  
 Test Speed: HIGH  
 Temperature:25.2℃  
 Operators:Dano  
 Test Date:2023-05-15

γ Range: 0 - 180DEG  
 γ Interval: 1.0DEG  
 Test System:EVERFINE GO-R5000\_V2 SYSTEM V2.00.459  
 Humidity:55.3%  
 Test Distance:2.900m [K=0.8810]  
 Remarks:

UGR(Unified Glare Rating) Table

Test:U:120.0V I:0.1966A P:23.43W PF:0.9933 Freq:60.01Hz										
Lamp Flux:1223.09x1 lm										
NAME: PT27-4-3x8S-952C5-MVTD-BN 4000K					TYPE:			WEIGHT:		
SPEC.:					DIM.:			SERIAL No.:		
MFR.: FOSHAN LEDKEY LIGHTING CO.,LTD.					SUR.:			Shielding Angle:		
ceiling/cavity	0.7	0.7	0.5	0.5	0.3	0.7	0.7	0.5	0.5	0.3
walls	0.5	0.3	0.5	0.3	0.3	0.5	0.3	0.5	0.3	0.3
working plane	0.2	0.2	0.2	0.2	0.2	0.2	0.2	0.2	0.2	0.2
Room dimensions	Viewed crosswise					Viewed endwise				
x = 2H y = 2H	24.4	26.6	26.1	28.4	30.8	25.6	27.8	27.3	29.7	32.0
3H	28.4	30.5	30.1	32.3	34.7	29.0	31.1	30.8	32.9	35.3
4H	30.5	32.4	32.3	34.3	36.7	30.8	32.8	32.6	34.6	37.0
6H	32.7	34.6	34.6	36.5	38.9	32.7	34.6	34.5	36.5	38.9
8H	34.0	35.7	35.8	37.7	40.1	33.8	35.6	35.6	37.5	39.9
12H	35.3	37.1	37.2	39.0	41.5	34.9	36.7	36.8	38.6	41.1
4H 2H	24.6	26.6	26.4	28.5	30.9	26.2	28.2	28.0	30.0	32.4
3H	28.8	30.6	30.7	32.5	34.9	30.0	31.7	31.8	33.6	36.1
4H	31.1	32.7	33.0	34.7	37.2	32.0	33.6	33.8	35.5	38.0
6H	33.6	35.0	35.5	37.0	39.5	34.1	35.5	36.0	37.5	40.0
8H	35.0	36.3	36.8	38.3	40.8	35.2	36.6	37.1	38.5	41.1
12H	36.5	37.7	38.4	39.7	42.3	36.5	37.7	38.4	39.7	42.3
8H 4H	31.4	32.8	33.3	34.8	37.3	32.5	33.9	34.4	35.9	38.4
6H	34.2	35.3	36.1	37.4	39.9	35.0	36.2	37.0	38.2	40.8
8H	35.7	36.8	37.7	38.8	41.4	36.4	37.5	38.3	39.5	42.1
12H	37.5	38.5	39.5	40.5	43.2	37.9	38.9	39.9	40.9	43.5
12H 4H	31.5	32.8	33.4	34.8	37.3	32.6	33.9	34.6	35.9	38.5
6H	34.3	35.4	36.3	37.4	40.0	35.3	36.3	37.2	38.3	41.0
8H	36.0	36.9	38.0	39.0	41.6	36.8	37.7	38.8	39.8	42.4
CIE190: 2010										

CIE190: 2010  
Area: 0.001257 m2

C Range: 0 - 360DEG  
C Interval: 22.5DEG  
Test Speed: HIGH  
Temperature:25.2℃  
Operators:Dano  
Test Date:2023-05-15

γ Range: 0 - 180DEG  
γ Interval: 1.0DEG  
Test System:EVERFINE GO-R5000\_V2 SYSTEM V2.00.459  
Humidity:55.3%  
Test Distance:2.900m [K=0.8810]  
Remarks:

**UTILIZATION FACTORS TABLE**

Test:U:120.0V I:0.1966A P:23.43W PF:0.9933 Freq:60.01Hz Lamp Flux:1223.09x1 lm		
NAME: PT27-4-3x8S-952C5-MVTD-BN 4000K	TYPE:	WEIGHT:
SPEC.:	DIM.:	SERIAL No.:
MFR.: FOSHAN LEDKEY LIGHTING CO.,LTD.	SUR.:	Shielding Angle:

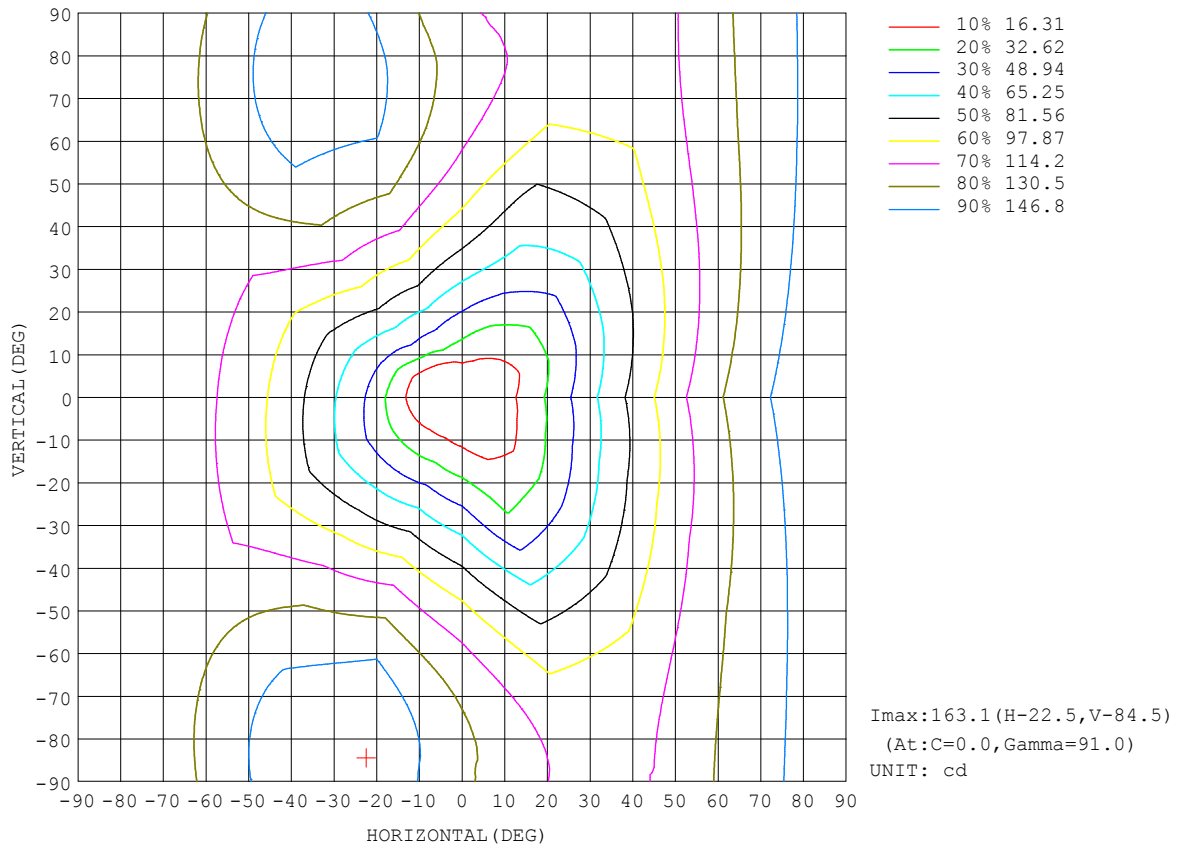
REFLECTANCE										
Ceiling	0.8	0.8	0.8	0.7	0.7	0.7	0.5	0.5	0.5	0
Walls	0.7	0.5	0.3	0.7	0.5	0.3	0.7	0.5	0.3	0
Working plane	0.2	0.2	0.2	0.2	0.2	0.2	0.2	0.2	0.2	0
ROOM INDEX	UTILIZATION FACTORS (PERCENT) $k(RI) \times RCR = 5$									
k = 0.60	34	21	13	32	20	13	29	18	12	4
0.80	42	28	19	40	26	18	35	24	16	7
1.00	49	34	25	46	32	24	40	31	21	10
1.25	56	41	31	52	39	29	45	34	26	13
1.50	62	47	36	57	44	34	49	38	30	15
2.00	70	56	45	65	52	43	55	45	38	20
2.50	75	62	52	69	58	49	59	50	43	23
3.00	79	67	58	73	63	54	62	54	47	26
4.00	85	74	66	78	69	61	66	59	53	30
5.00	88	79	72	82	74	67	69	63	57	33
ROOM INDEX	UF(total)									Direct
According to DIN EN 13032-2 2004			Suspended				SHRNOM = 1.25			

C Range: 0 - 360DEG  
 C Interval: 22.5DEG  
 Test Speed: HIGH  
 Temperature:25.2°C  
 Operators:Dano  
 Test Date:2023-05-15

$\gamma$  Range: 0 - 180DEG  
 $\gamma$  Interval: 1.0DEG  
 Test System:EVERFINE GO-R5000\_V2 SYSTEM V2.00.459  
 Humidity:55.3%  
 Test Distance:2.900m [K=0.8810]  
 Remarks:

ISOCANDELA DIAGRAM

Test:U:120.0V I:0.1966A P:23.43W PF:0.9933 Freq:60.01Hz Lamp Flux:1223.09x1 lm		
NAME: PT27-4-3x8S-952C5-MVTD-BN 4000K	TYPE:	WEIGHT:
SPEC.:	DIM.:	SERIAL No.:
MFR.: FOSHAN LEDKEY LIGHTING CO.,LTD.	SUR.:	Shielding Angle:



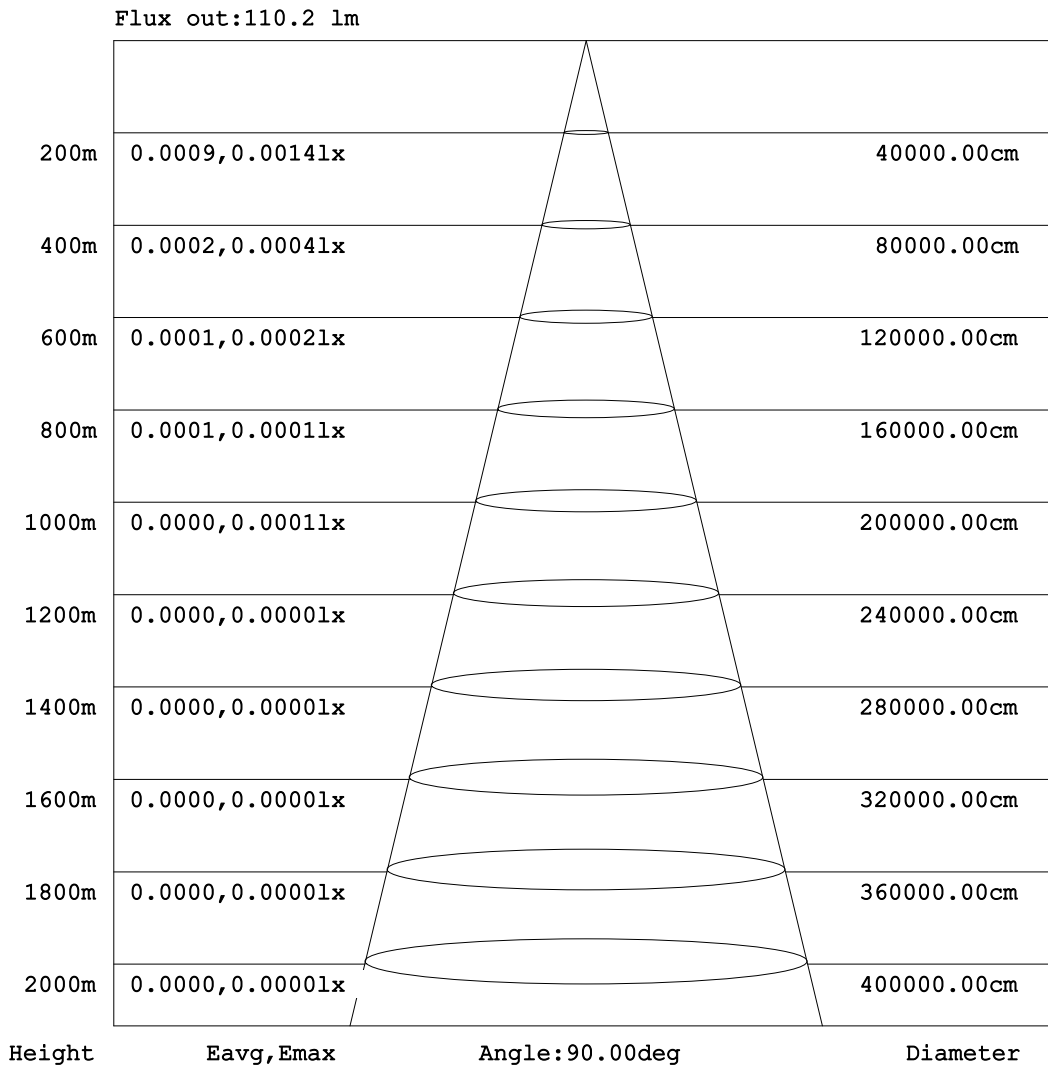
C Range: 0 - 360DEG  
C Interval: 22.5DEG  
Test Speed: HIGH  
Temperature:25.2°C  
Operators:Dano  
Test Date:2023-05-15

γ Range: 0 - 180DEG  
γ Interval: 1.0DEG  
Test System:EVERFINE GO-R5000\_V2 SYSTEM V2.00.459  
Humidity:55.3%  
Test Distance:2.900m [K=0.8810]  
Remarks:



AAI Figure

Test:U:120.0V I:0.1966A P:23.43W PF:0.9933 Freq:60.01Hz Lamp Flux:1223.09x1 lm		
NAME: PT27-4-3x8S-952C5-MVTD-BN 4000K	TYPE:	WEIGHT:
SPEC.:	DIM.:	SERIAL No.:
MFR.: FOSHAN LEDKEY LIGHTING CO.,LTD.	SUR.:	Shielding Angle:



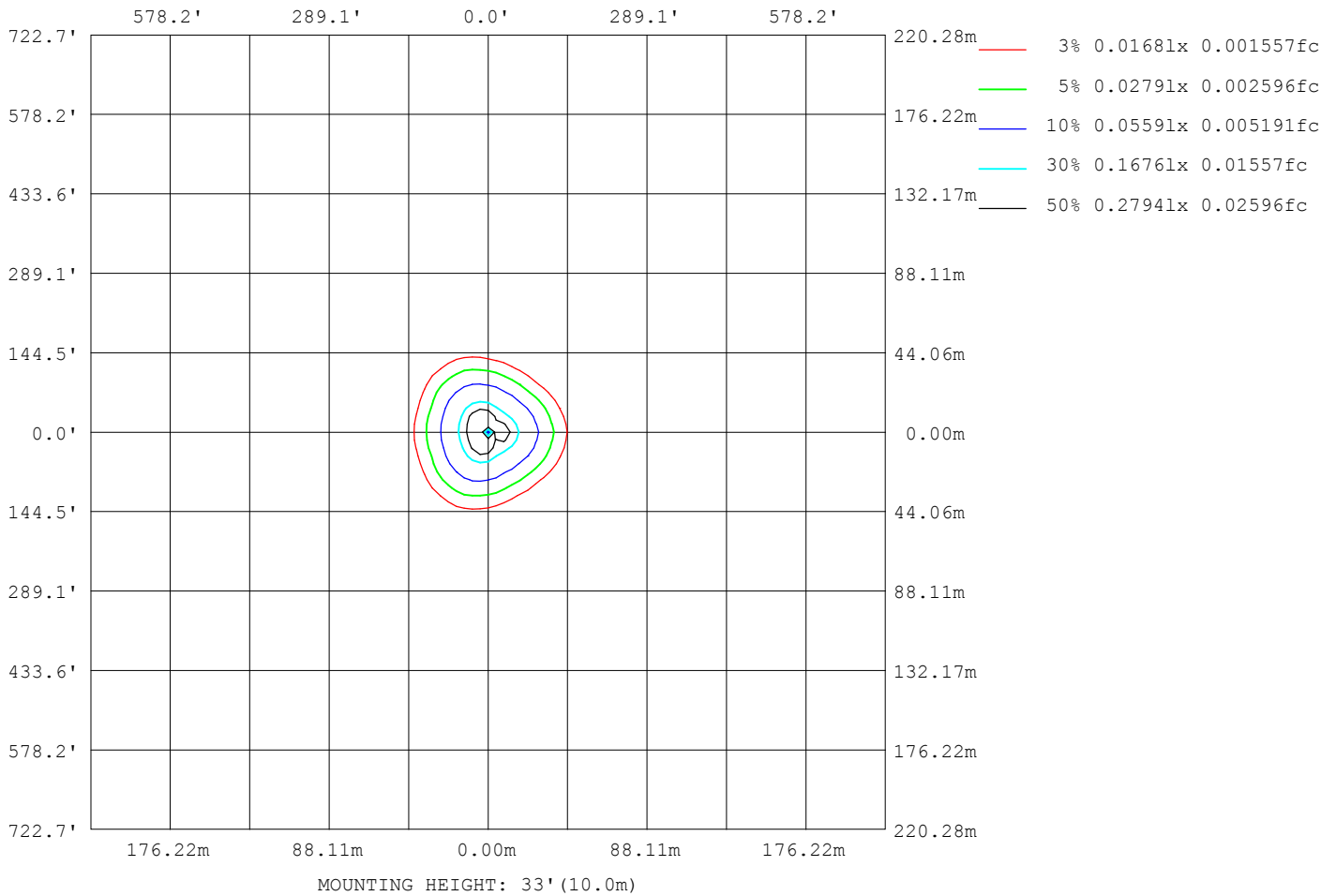
Note:The Curves indicate the illuminated area and the average illumination when the luminaire is at different distance.

C Range: 0 - 360DEG  
 C Interval: 22.5DEG  
 Test Speed: HIGH  
 Temperature:25.2℃  
 Operators:Dano  
 Test Date:2023-05-15

γ Range: 0 - 180DEG  
 γ Interval: 1.0DEG  
 Test System:EVERFINE GO-R5000\_V2 SYSTEM V2.00.459  
 Humidity:55.3%  
 Test Distance:2.900m [K=0.8810]  
 Remarks:

ISOLUX DIAGRAM

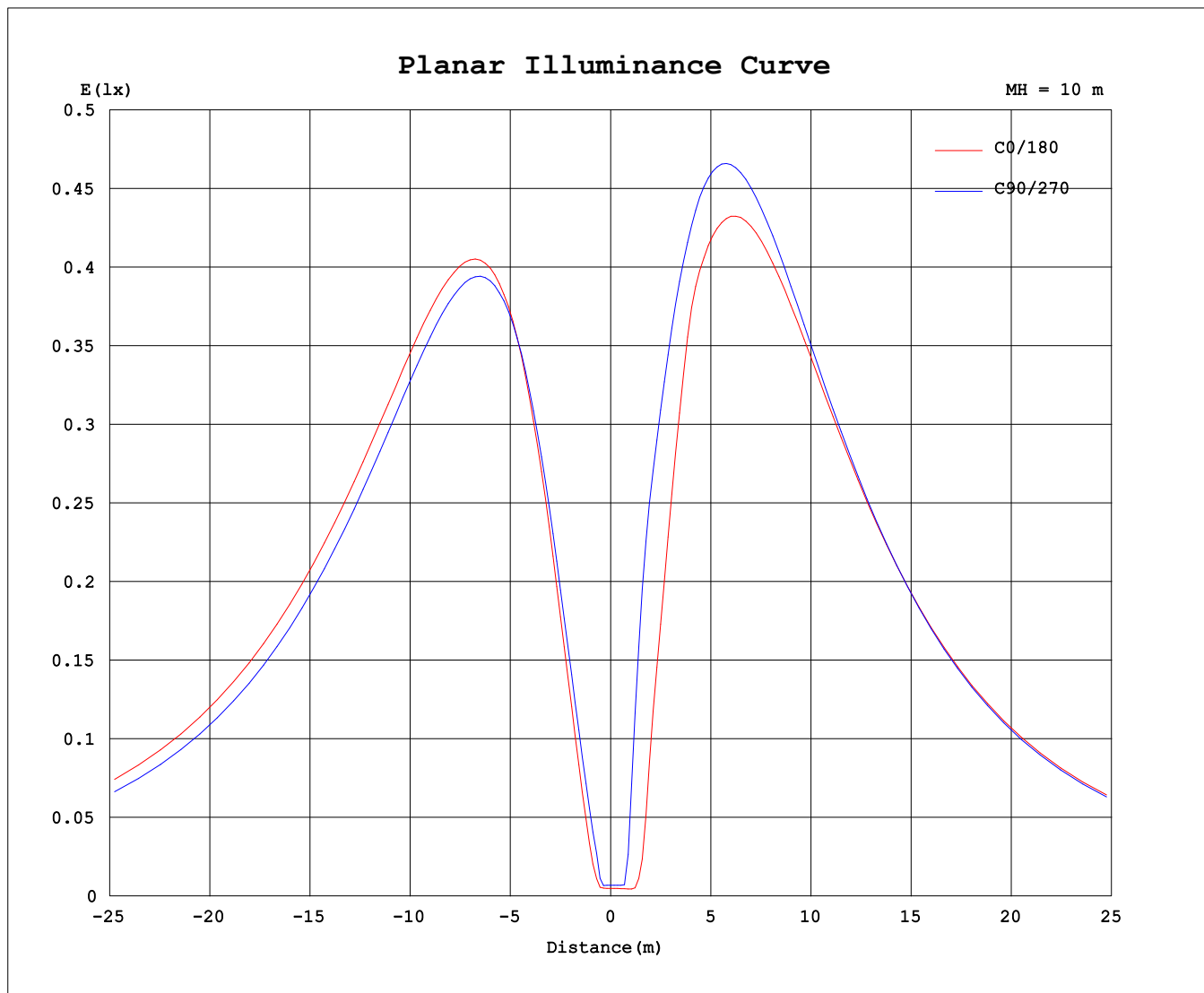
Test:U:120.0V I:0.1966A P:23.43W PF:0.9933 Freq:60.01Hz Lamp Flux:1223.09x1 lm		
NAME: PT27-4-3x8S-952C5-MVTD-BN 4000K	TYPE:	WEIGHT:
SPEC.:	DIM.:	SERIAL No.:
MFR.: FOSHAN LEDKEY LIGHTING CO.,LTD.	SUR.:	Shielding Angle:



C Range: 0 - 360DEG  
 C Interval: 22.5DEG  
 Test Speed: HIGH  
 Temperature:25.2°C  
 Operators:Dano  
 Test Date:2023-05-15

γ Range: 0 - 180DEG  
 γ Interval: 1.0DEG  
 Test System:EVERFINE GO-R5000\_V2 SYSTEM V2.00.459  
 Humidity:55.3%  
 Test Distance:2.900m [K=0.8810]  
 Remarks:

### Planar Illuminance Curve



C Range: 0 - 360DEG  
C Interval: 22.5DEG  
Test Speed: HIGH  
Temperature: 25.2°C  
Operators: Dano  
Test Date: 2023-05-15

γ Range: 0 - 180DEG  
γ Interval: 1.0DEG  
Test System: EVERFINE GO-R5000\_V2 SYSTEM V2.00.459  
Humidity: 55.3%  
Test Distance: 2.900m [K=0.8810]  
Remarks:

LUMINOUS DISTRIBUTION INTENSITY DATA

Test:U:120.0V I:0.1966A P:23.43W PF:0.9933 Freq:60.01Hz Lamp Flux:1223.09x1 lm		
NAME: PT27-4-3x8S-952C5-MVTD-BN 4000K	TYPE:	WEIGHT:
SPEC.:	DIM.:	SERIAL No.:
MFR.: FOSHAN LEDKEY LIGHTING CO.,LTD.	SUR.:	Shielding Angle:

Table--1

UNIT: cd

C (DEG) γ (DEG)	0	22.5	45	67.5	90	112.5	135	157.5	180	202.5	225	247.5	270	292.5	315	337.5			
0	0.65	0.65	0.65	0.65	0.65	0.65	0.65	0.65	0.65	0.65	0.65	0.65	0.65	0.65	0.65	0.65			
5	2.67	1.84	1.04	2.27	3.78	4.48	2.38	0.45	0.61	0.59	0.60	0.78	2.47	3.74	3.20	2.24			
10	13.7	10.45	6.18	7.60	11.7	13.9	13.2	9.44	6.91	9.82	18.1	23.3	21.5	15.2	11.2	7.87			
15	28.0	22.0	13.9	15.1	21.5	25.4	24.3	21.3	28.5	31.7	46.6	43.3	33.1	23.6	18.1	15.1			
20	44.3	35.3	23.0	22.2	32.3	38.0	36.4	33.7	51.4	56.6	63.9	58.5	44.3	32.7	25.2	24.8			
25	61.2	49.3	33.7	27.7	43.4	51.0	48.8	44.6	70.0	71.3	80.0	73.2	55.2	41.7	32.9	34.9			
30	78.1	63.3	44.8	33.7	54.5	63.7	61.0	54.8	85.2	85.2	95.1	86.9	65.4	49.5	40.9	45.2			
35	94.5	77.1	55.9	42.5	65.1	76.0	72.8	64.4	99.5	97.9	109	99.6	74.7	55.5	49.1	55.2			
40	110	90.3	66.6	52.8	75.1	87.7	83.9	73.3	113	110	122	111	83.0	60.1	57.1	64.8			
45	125	103	76.9	62.7	84.4	98.7	94.3	81.5	124	120	133	121	90.3	64.4	64.5	73.8			
50	140	115	86.5	72.2	93.0	109	104	88.8	135	129	143	130	96.5	69.8	71.2	82.3			
55	153	126	95.2	80.9	101	118	112	95.1	143	136	152	138	102	76.1	77.2	90.2			
60	165	135	103	88.8	107	126	120	100	150	141	159	144	106	81.7	82.4	97.2			
65	176	144	110	95.8	113	133	126	105	155	146	164	149	108	86.4	86.9	103			
70	185	151	115	102	117	138	131	108	158	148	167	151	110	90.0	90.5	109			
75	192	158	120	106	120	142	135	110	160	149	168	153	111	92.6	93.3	113			
80	198	162	123	110	122	144	137	111	160	149	168	152	111	94.0	95.1	116			
85	202	165	125	112	122	145	138	111	159	147	166	150	109	94.2	96.0	119			
90	204	167	126	112	121	144	137	109	156	144	163	147	106	93.0	96.1	120			
95	203	166	125	110	120	142	135	107	152	139	158	143	93.9	90.7	95.3	120			
100	201	165	123	107	117	138	131	103	146	134	152	137	88.7	87.6	93.7	119			
105	197	161	120	103	112	133	126	99.1	140	127	144	130	86.5	83.8	91.2	116			
110	190	156	116	97.7	106	126	120	93.9	132	120	136	123	82.5	79.2	87.9	113			
115	182	150	111	91.9	100	119	113	88.0	123	111	127	115	77.2	74.0	83.9	108			
120	172	142	104	85.3	92.9	110	105	81.5	113	103	117	106	71.6	68.3	79.1	102			
125	161	133	97.0	78.1	85.1	101	96.8	74.4	102	93.4	107	96.5	65.9	62.0	73.8	95.9			
130	149	123	88.9	70.4	76.8	91.3	87.6	66.8	90.6	83.3	96.2	86.8	59.5	55.1	67.8	88.6			
135	135	112	80.1	62.4	68.0	81.0	77.9	58.8	78.7	72.7	85.0	76.9	53.0	48.2	61.1	80.5			
140	121	99.9	70.6	54.6	58.7	70.3	67.8	50.5	66.3	61.6	73.3	66.8	46.5	41.0	53.7	71.4			
145	105	87.2	60.7	46.6	49.3	59.3	57.3	42.0	53.9	50.0	61.1	56.7	40.0	33.2	45.4	61.3			
150	89.1	73.9	50.4	38.5	39.6	48.1	46.6	33.5	41.5	38.4	48.5	46.3	33.6	25.3	36.3	50.3			
155	72.5	60.0	40.1	30.0	30.0	36.9	35.8	25.3	29.7	27.3	35.6	35.7	26.9	18.7	26.9	38.7			
160	55.5	46.0	30.0	21.7	20.7	25.9	25.2	17.5	18.8	17.2	23.3	25.0	19.7	13.8	18.2	27.6			
165	38.7	32.1	20.6	13.7	12.2	15.7	15.3	10.5	9.13	8.52	13.0	14.9	12.0	8.46	11.6	18.1			
170	22.8	19.1	12.6	6.68	5.17	6.93	6.84	4.38	2.17	2.09	4.99	6.39	5.23	3.10	4.88	11.2			
175	9.27	7.98	5.51	2.56	0.76	0.76	0.79	0.41	0.33	0.31	0.42	0.63	0.49	0.20	0.23	1.06			
180	0.00	0.00	0.00	0.00	0.10	0.17	0.19	0.19	0.17	0.17	0.19	0.18	0.16	0.17	0.18	0.19			

C Range: 0 - 360DEG  
 C Interval: 22.5DEG  
 Test Speed: HIGH  
 Temperature:25.2℃  
 Operators:Dano  
 Test Date:2023-05-15

γ Range: 0 - 180DEG  
 γ Interval: 1.0DEG  
 Test System:EVERFINE GO-R5000\_V2 SYSTEM V2.00.459  
 Humidity:55.3%  
 Test Distance:2.900m [K=0.8810]  
 Remarks: