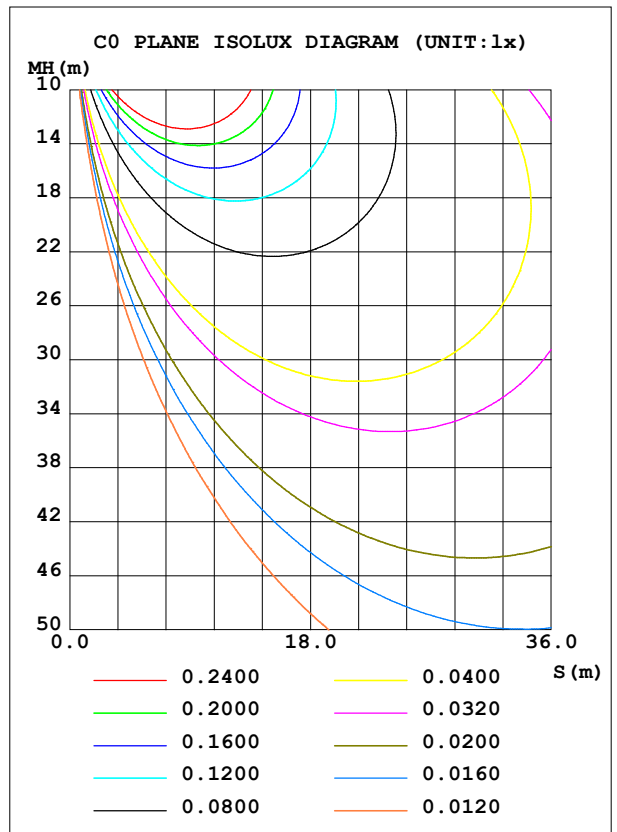
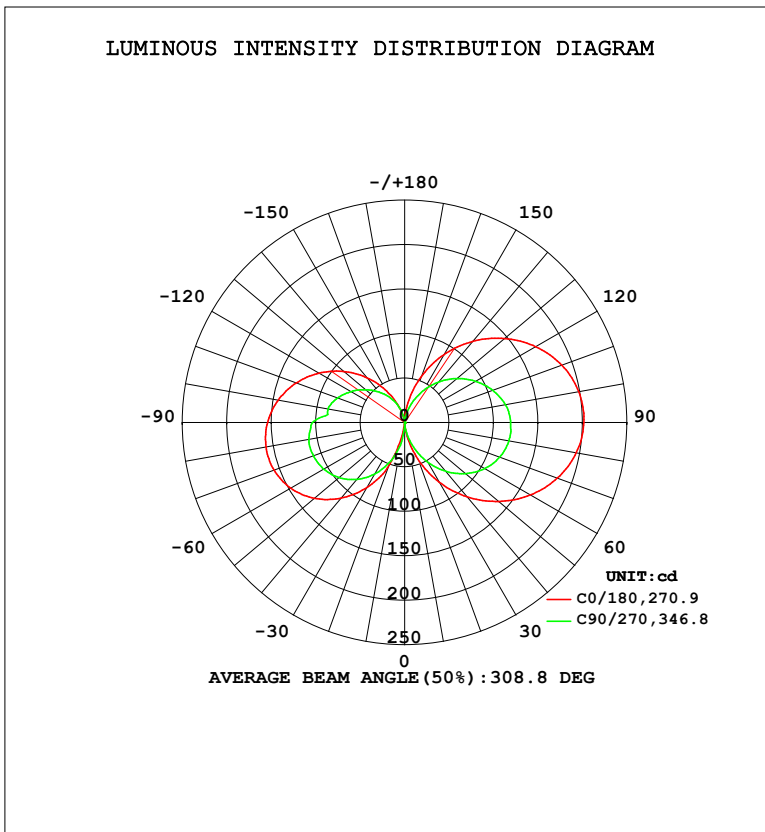


LUMINAIRE PHOTOMETRIC TEST REPORT

Test:U:120.1V I:0.1971A P:23.51W PF:0.9934 Freq:60.01Hz Lamp Flux:1202.74x1 lm		
NAME: PT27-4-3x8S-952C5-MVTD-BN 3500K	TYPE:	WEIGHT:
SPEC.:	DIM.:	SERIAL No.:
MFR.: FOSHAN LEDKEY LIGHTING CO.,LTD.	SUR.:	Shielding Angle:

DATA OF LAMP		PHOTOMETRIC DATA				Eff: 51.16 lm/W
MODEL		Imax (cd)	201.7	S/MH (C0/180)	14.17	
NOMINAL POWER (W)		LOR (%)	100.0	S/MH (C90/270)	12.41	
RATED VOLTAGE (V)	120	TOTAL FLUX (lm)	1202.7	$\eta$ UP, DN (C0-180)	25.3, 26.3	
NOMINAL FLUX (lm)	1202.74	CIE CLASS	DIFFUSE	$\eta$ UP, DN (C180-360)	21.6, 26.8	
LAMPS INSIDE	1	$\eta$ up (%)	46.9	CIBSE SHR NOM	1.25	
TEST VOLTAGE (V)	120	$\eta$ down (%)	53.1	CIBSE SHR MAX	1.35	



C Range: 0 - 360DEG  
 C Interval: 22.5DEG  
 Test Speed: HIGH  
 Temperature: 25.2°C  
 Operators: Dano  
 Test Date: 2023-05-15

$\gamma$  Range: 0 - 180DEG  
 $\gamma$  Interval: 1.0DEG  
 Test System: EVERFINE GO-R5000\_V2 SYSTEM V2.00.459  
 Humidity: 55.3%  
 Test Distance: 2.900m [K=0.8810]  
 Remarks:

ZONAL FLUX DIAGRAM

ZONAL FLUX DIAGRAM:

γ	C0	C45	C90	C135	C180	C225	C270	C315	γ	Φ zone	Φ total	%lum,lamp
10	13.50	6.141	9.793	10.86	6.453	17.82	23.86	12.34	0- 10	0.5724	0.5724	0.05,0.05
20	43.82	22.89	29.51	32.97	50.36	63.46	46.12	26.12	10- 20	7.412	7.985	0.66,0.66
30	77.30	44.47	51.24	56.95	84.15	94.59	66.62	41.51	20- 30	23.05	31.04	2.58,2.58
40	109.3	66.12	71.72	79.32	111.1	121.3	83.69	57.05	30- 40	45.04	76.07	6.33,6.33
50	138.3	85.83	89.64	98.95	132.8	142.6	96.56	70.50	40- 50	70.72	146.8	12.2,12.2
60	163.3	102.2	104.0	115.0	148.0	157.8	105.1	81.17	50- 60	96.69	243.5	20.2,20.2
70	183.0	114.5	114.0	126.5	156.4	166.1	109.3	88.65	60- 70	119.2	362.7	30.2,30.2
80	196.0	122.0	119.1	132.8	158.4	167.4	109.5	92.78	70- 80	134.9	497.6	41.4,41.4
90	201.6	124.7	119.3	133.3	154.2	162.1	103.7	93.53	80- 90	141.5	639.1	53.1,53.1
100	198.9	122.3	115.3	128.1	144.6	151.1	87.57	90.79	90-100	137.5	776.6	64.6,64.6
110	188.3	114.9	105.7	118.0	130.0	135.7	80.62	84.86	100-110	125.2	901.8	75,75
120	170.5	103.4	92.66	103.9	111.2	116.9	69.76	76.11	110-120	105.8	1008	83.8,83.8
130	147.1	88.13	77.06	86.86	89.45	95.81	57.59	64.78	120-130	82.17	1090	90.6,90.6
140	119.1	70.00	59.53	67.76	65.54	73.11	44.75	50.78	130-140	57.42	1147	95.4,95.4
150	88.02	49.99	40.76	47.26	41.00	48.37	31.89	33.53	140-150	34.50	1182	98.2,98.2
160	54.91	29.70	22.04	26.47	18.55	23.29	17.92	16.31	150-160	16.14	1198	99.6,99.6
170	22.55	12.48	6.339	8.143	2.151	4.995	3.952	3.219	160-170	4.645	1202	100,100
180	0	0	0.0116	0.1580	0.1720	0.1863	0.1997	0.1606	170-180	0.3511	1203	100,100
DEG	LUMINOUS INTENSITY:cd									UNIT:lm		

Conical surface Flux(90deg): 108.13 lm

%lum = 9.0%  
 %lamp = 9.0%

Conical surface Flux(120deg): 243.48 lm

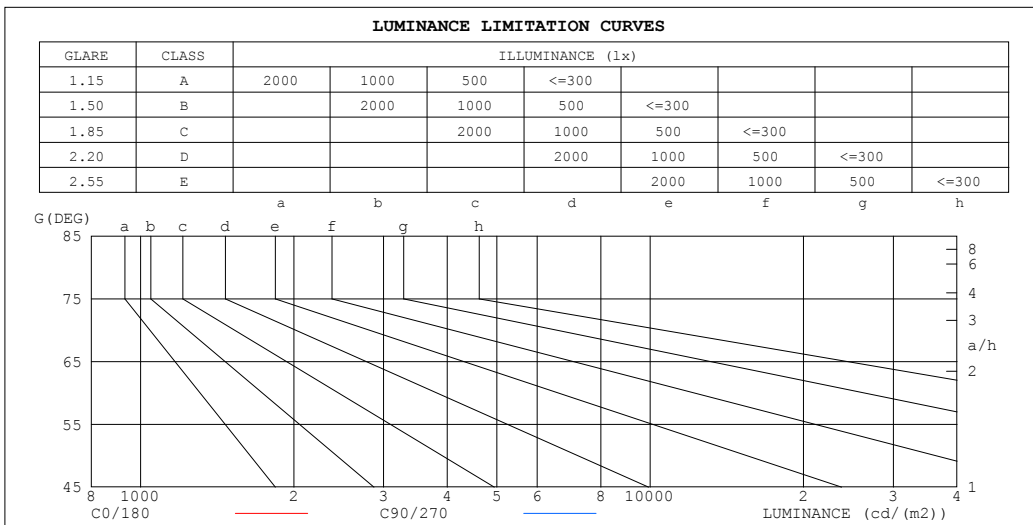
%lum = 20.2%  
 %lamp = 20.2%

C Range: 0 - 360DEG  
 C Interval: 22.5DEG  
 Test Speed: HIGH  
 Temperature:25.2℃  
 Operators:Dano  
 Test Date:2023-05-15

γ Range: 0 - 180DEG  
 γ Interval: 1.0DEG  
 Test System:EVERFINE GO-R5000\_V2 SYSTEM V2.00.459  
 Humidity:55.3%  
 Test Distance:2.900m [K=0.8810]  
 Remarks:

LUMINANCE LIMITATION CURVES

Test:U:120.1V I:0.1971A P:23.51W PF:0.9934 Freq:60.01Hz Lamp Flux:1202.74x1 lm		
NAME: PT27-4-3x8S-952C5-MVTD-BN 3500K	TYPE:	WEIGHT:
SPEC.:	DIM.:	SERIAL No.:
MFR.: FOSHAN LEDKEY LIGHTING CO.,LTD.	SUR.:	Shielding Angle:



LUMINANCE cd/(m2)		
G (DEG)	C0/180	C90/270
85	1414710	1198299
80	696331	597533
75	453962	394385
70	329936	290278
65	253745	225896
60	201396	181203
55	162845	147820
50	132730	121475
45	108343	99896

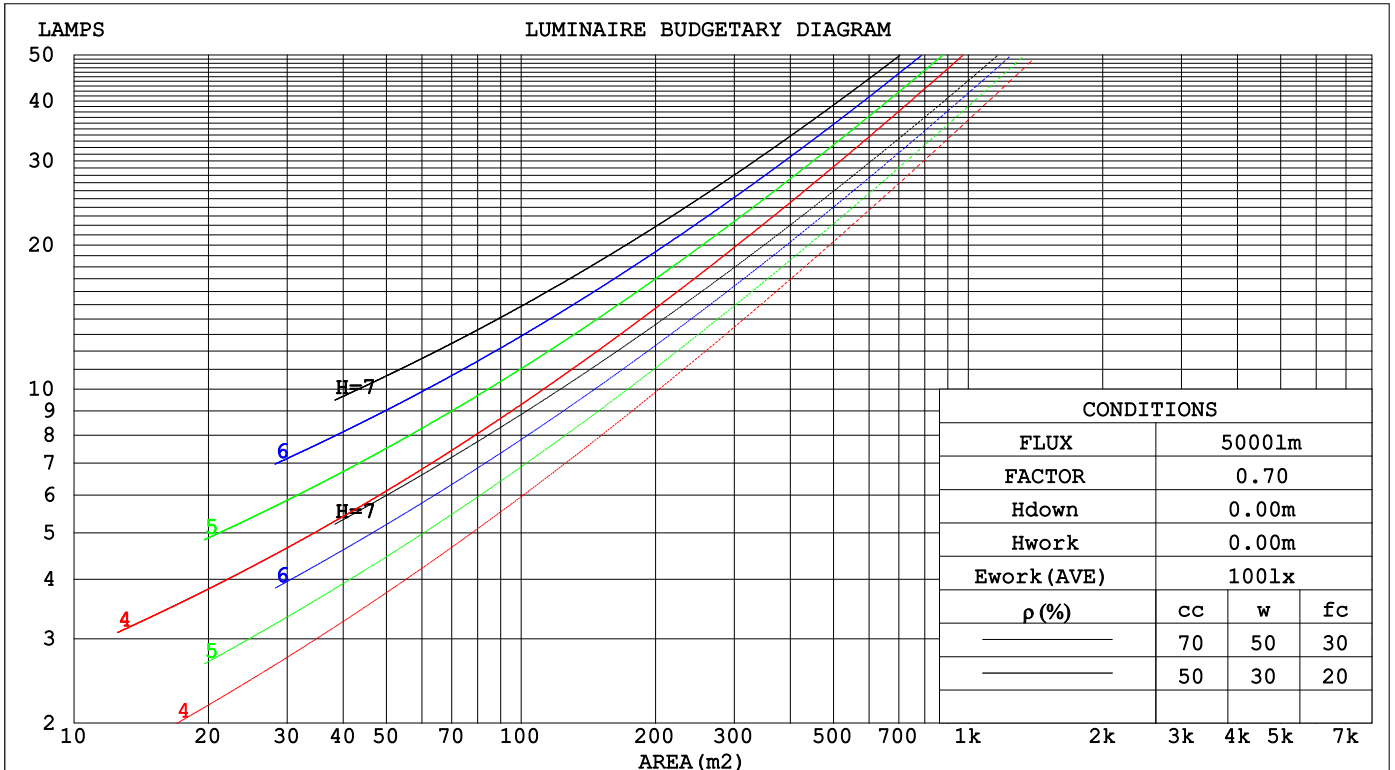
C Range: 0 - 360DEG  
 C Interval: 22.5DEG  
 Test Speed: HIGH  
 Temperature:25.2°C  
 Operators:Dano  
 Test Date:2023-05-15

γ Range: 0 - 180DEG  
 γ Interval: 1.0DEG  
 Test System:EVERFINE GO-R5000\_V2 SYSTEM V2.00.459  
 Humidity:55.3%  
 Test Distance:2.900m [K=0.8810]  
 Remarks:

**CU AND LUMINAIRE BUDGETARY ESTIMATE DIAGRAM**

Test:U:120.1V I:0.1971A P:23.51W PF:0.9934 Freq:60.01Hz Lamp Flux:1202.74x1 lm		
NAME: PT27-4-3x8S-952C5-MVTD-BN 3500K	TYPE:	WEIGHT:
SPEC.:	DIM.:	SERIAL No.:
MFR.: FOSHAN LEDKEY LIGHTING CO.,LTD.	SUR.:	Shielding Angle:

$\rho_{cc}$	80%			70%			50%			30%			10%			0
$\rho_w$	50%	30%	10%	50%	30%	10%	50%	30%	10%	50%	30%	10%	50%	30%	10%	0
$\rho_{fc}$	20%			20%			20%			20%			20%			0
RCR	RCR:Room Cavity Ratio						Coefficients of Utilization(CU)									
0.0	1.08	1.08	1.08	.00	.00	.00	.85	.85	.85	.71	.71	.71	.59	.59	.59	.53
1.0	.85	.79	.74	.78	.73	.68	.65	.61	.57	.54	.50	.47	.43	.40	.38	.32
2.0	.71	.63	.55	.65	.57	.51	.54	.48	.43	.43	.39	.35	.34	.30	.27	.22
3.0	.61	.51	.43	.55	.47	.40	.46	.39	.33	.36	.31	.27	.28	.24	.20	.16
4.0	.52	.42	.35	.48	.39	.32	.39	.32	.26	.31	.26	.21	.24	.20	.16	.12
5.0	.46	.36	.29	.42	.33	.26	.34	.27	.22	.27	.22	.17	.21	.16	.13	.09
6.0	.40	.31	.24	.37	.28	.22	.30	.23	.18	.24	.19	.14	.18	.14	.11	.07
7.0	.36	.27	.20	.33	.25	.19	.27	.20	.15	.22	.16	.12	.17	.12	.09	.06
8.0	.32	.24	.17	.30	.22	.16	.24	.18	.13	.20	.14	.10	.15	.11	.07	.05
9.0	.29	.21	.15	.27	.19	.14	.22	.16	.11	.18	.13	.09	.14	.10	.06	.04
10.0	.27	.19	.13	.24	.17	.12	.20	.14	.10	.16	.11	.08	.13	.09	.06	.03



C Range: 0 - 360DEG  
 C Interval: 22.5DEG  
 Test Speed: HIGH  
 Temperature:25.2°C  
 Operators:Dano  
 Test Date:2023-05-15

$\gamma$  Range: 0 - 180DEG  
 $\gamma$  Interval: 1.0DEG  
 Test System:EVERFINE GO-R5000\_V2 SYSTEM V2.00.459  
 Humidity:55.3%  
 Test Distance:2.900m [K=0.8810]  
 Remarks:

WEC AND CCEC

Test:U:120.1V I:0.1971A P:23.51W PF:0.9934 Freq:60.01Hz Lamp Flux:1202.74x1 lm		
NAME: PT27-4-3x8S-952C5-MVTD-BN 3500K	TYPE:	WEIGHT:
SPEC.:	DIM.:	SERIAL No.:
MFR.: FOSHAN LEDKEY LIGHTING CO.,LTD.	SUR.:	Shielding Angle:

ρ <sub>cc</sub>	80%			70%			50%			30%			10%			0
ρ <sub>w</sub>	50%	30%	10%	50%	30%	10%	50%	30%	10%	50%	30%	10%	50%	30%	10%	0
ρ <sub>fc</sub>	20%			20%			20%			20%			20%			0
RCR	RCR:Room Cavity Ratio						Wall Exitance Coefficients(WEC)									
0.0																
1.0	.448	.255	.081	.426	.243	.077	.386	.221	.071	.349	.201	.065	.315	.182	.059	
2.0	.368	.202	.062	.348	.192	.059	.311	.173	.054	.277	.155	.049	.246	.139	.044	
3.0	.318	.169	.051	.300	.160	.048	.266	.144	.044	.234	.128	.039	.205	.114	.035	
4.0	.281	.146	.043	.264	.138	.041	.233	.124	.037	.204	.110	.033	.177	.096	.029	
5.0	.252	.128	.037	.236	.121	.035	.208	.108	.032	.181	.096	.028	.157	.084	.025	
6.0	.228	.114	.033	.214	.108	.031	.188	.096	.028	.163	.085	.025	.140	.074	.022	
7.0	.209	.103	.029	.196	.098	.028	.172	.087	.025	.149	.076	.022	.127	.066	.019	
8.0	.192	.094	.026	.181	.089	.025	.158	.079	.023	.137	.069	.020	.117	.060	.017	
9.0	.178	.086	.024	.167	.082	.023	.146	.072	.021	.127	.063	.018	.108	.055	.016	
10.0	.166	.080	.022	.156	.075	.021	.136	.067	.019	.118	.058	.017	.100	.050	.014	

ρ <sub>cc</sub>	80%			70%			50%			30%			10%			0
ρ <sub>w</sub>	50%	30%	10%	50%	30%	10%	50%	30%	10%	50%	30%	10%	50%	30%	10%	0
ρ <sub>fc</sub>	20%			20%			20%			20%			20%			0
RCR	RCR:Room Cavity Ratio						Ceiling Cavity Exitance Coefficients(CCEC)									
0.0	.548	.548	.548	.468	.468	.468	.319	.319	.319	.183	.183	.183	.059	.059	.059	
1.0	.550	.515	.483	.471	.442	.416	.322	.304	.288	.185	.176	.167	.059	.057	.054	
2.0	.545	.494	.451	.467	.425	.390	.320	.294	.272	.184	.171	.159	.059	.055	.052	
3.0	.538	.479	.432	.461	.413	.374	.317	.287	.263	.183	.168	.155	.059	.054	.051	
4.0	.531	.468	.420	.455	.404	.365	.313	.282	.257	.181	.165	.152	.058	.054	.050	
5.0	.523	.459	.411	.449	.397	.358	.309	.277	.253	.179	.163	.150	.058	.053	.049	
6.0	.516	.451	.405	.443	.391	.353	.306	.274	.250	.177	.161	.148	.057	.053	.049	
7.0	.508	.445	.401	.437	.386	.350	.302	.271	.248	.176	.159	.147	.057	.052	.049	
8.0	.502	.440	.398	.432	.382	.347	.299	.268	.246	.174	.158	.147	.056	.052	.049	
9.0	.495	.436	.395	.427	.378	.345	.296	.266	.245	.172	.157	.146	.056	.052	.048	
10.0	.490	.432	.393	.422	.375	.343	.293	.264	.244	.171	.156	.146	.055	.051	.048	

C Range: 0 - 360DEG  
 C Interval: 22.5DEG  
 Test Speed: HIGH  
 Temperature:25.2℃  
 Operators:Dano  
 Test Date:2023-05-15

γ Range: 0 - 180DEG  
 γ Interval: 1.0DEG  
 Test System:EVERFINE GO-R5000\_V2 SYSTEM V2.00.459  
 Humidity:55.3%  
 Test Distance:2.900m [K=0.8810]  
 Remarks:

UGR(Unified Glare Rating) Table

Test:U:120.1V I:0.1971A P:23.51W PF:0.9934 Freq:60.01Hz										
Lamp Flux:1202.74x1 lm										
NAME: PT27-4-3x8S-952C5-MVTD-BN 3500K					TYPE:			WEIGHT:		
SPEC.:					DIM.:			SERIAL No.:		
MFR.: FOSHAN LEDKEY LIGHTING CO.,LTD.					SUR.:			Shielding Angle:		
ceiling/cavity	0.7	0.7	0.5	0.5	0.3	0.7	0.7	0.5	0.5	0.3
walls	0.5	0.3	0.5	0.3	0.3	0.5	0.3	0.5	0.3	0.3
working plane	0.2	0.2	0.2	0.2	0.2	0.2	0.2	0.2	0.2	0.2
Room dimensions	Viewed crosswise					Viewed endwise				
x = 2H y = 2H	24.3	26.6	26.0	28.4	30.7	25.4	27.7	27.1	29.5	31.8
3H	28.3	30.4	30.1	32.3	34.6	28.9	30.9	30.6	32.8	35.2
4H	30.4	32.4	32.2	34.3	36.7	30.7	32.6	32.4	34.5	36.9
6H	32.7	34.5	34.5	36.4	38.9	32.6	34.5	34.4	36.3	38.8
8H	33.9	35.7	35.7	37.6	40.1	33.6	35.4	35.5	37.3	39.8
12H	35.3	37.0	37.1	38.9	41.4	34.8	36.6	36.7	38.5	40.9
4H 2H	24.6	26.5	26.4	28.4	30.8	26.0	28.0	27.8	29.9	32.3
3H	28.8	30.5	30.6	32.4	34.9	29.8	31.5	31.6	33.4	35.9
4H	31.1	32.7	32.9	34.6	37.1	31.8	33.4	33.7	35.4	37.9
6H	33.6	35.0	35.4	37.0	39.5	34.0	35.4	35.8	37.4	39.9
8H	34.9	36.3	36.8	38.2	40.8	35.1	36.4	37.0	38.4	41.0
12H	36.4	37.7	38.4	39.7	42.2	36.4	37.6	38.3	39.6	42.2
8H 4H	31.4	32.7	33.3	34.7	37.3	32.4	33.8	34.3	35.7	38.3
6H	34.1	35.3	36.1	37.3	39.9	34.9	36.1	36.8	38.1	40.7
8H	35.7	36.7	37.6	38.8	41.4	36.3	37.3	38.2	39.4	42.0
12H	37.5	38.4	39.5	40.4	43.1	37.8	38.8	39.8	40.8	43.4
12H 4H	31.5	32.7	33.4	34.7	37.3	32.5	33.8	34.4	35.8	38.3
6H	34.3	35.3	36.2	37.3	40.0	35.1	36.2	37.1	38.2	40.8
8H	35.9	36.9	37.9	38.9	41.6	36.7	37.6	38.7	39.7	42.3
CIE190: 2010										

CIE190: 2010  
Area: 0.001257 m2

C Range: 0 - 360DEG  
C Interval: 22.5DEG  
Test Speed: HIGH  
Temperature:25.2℃  
Operators:Dano  
Test Date:2023-05-15

γ Range: 0 - 180DEG  
γ Interval: 1.0DEG  
Test System:EVERFINE GO-R5000\_V2 SYSTEM V2.00.459  
Humidity:55.3%  
Test Distance:2.900m [K=0.8810]  
Remarks:

**UTILIZATION FACTORS TABLE**

Test:U:120.1V I:0.1971A P:23.51W PF:0.9934 Freq:60.01Hz Lamp Flux:1202.74x1 lm		
NAME: PT27-4-3x8S-952C5-MVTD-BN 3500K	TYPE:	WEIGHT:
SPEC.:	DIM.:	SERIAL No.:
MFR.: FOSHAN LEDKEY LIGHTING CO.,LTD.	SUR.:	Shielding Angle:

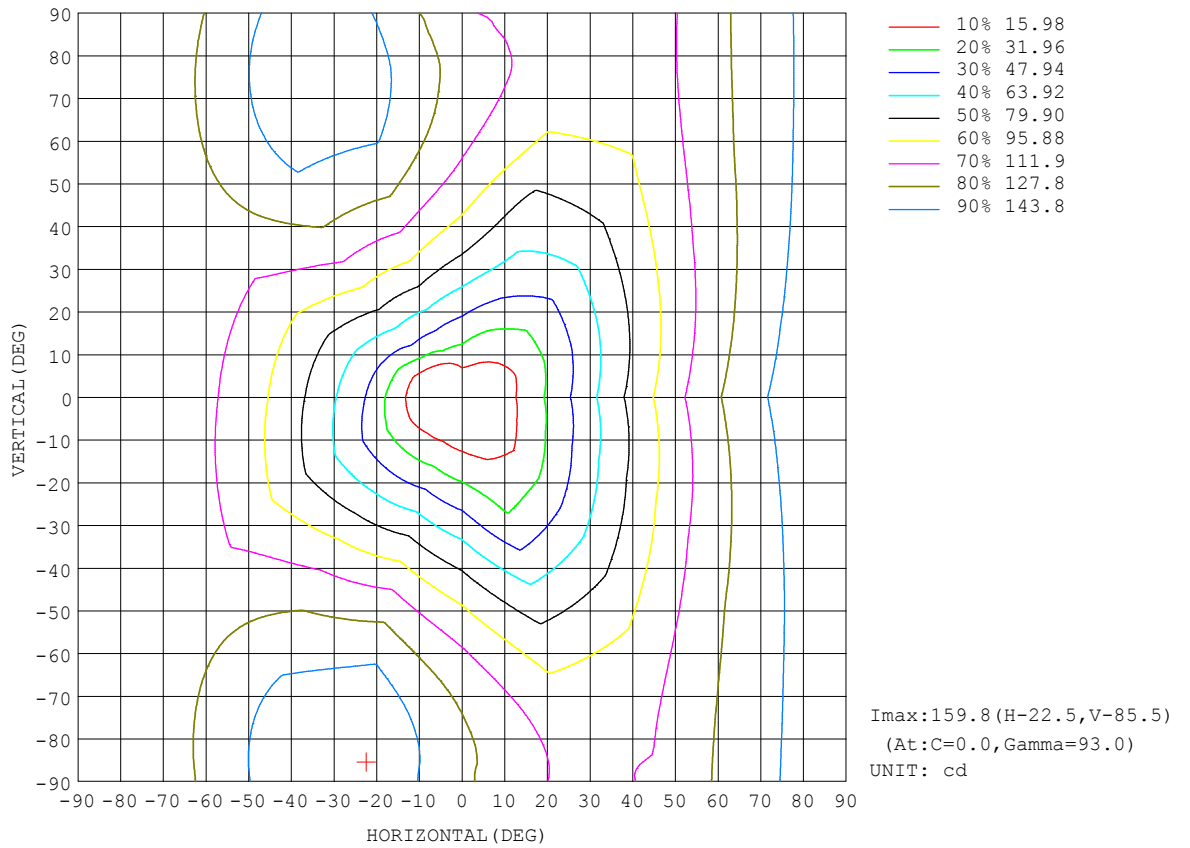
REFLECTANCE										
Ceiling	0.8	0.8	0.8	0.7	0.7	0.7	0.5	0.5	0.5	0
Walls	0.7	0.5	0.3	0.7	0.5	0.3	0.7	0.5	0.3	0
Working plane	0.2	0.2	0.2	0.2	0.2	0.2	0.2	0.2	0.2	0
ROOM INDEX	UTILIZATION FACTORS (PERCENT) $k(RI) \times RCR = 5$									
k = 0.60	34	21	13	32	20	13	29	18	12	4
0.80	42	28	19	40	26	18	35	24	16	7
1.00	49	34	25	46	32	24	40	31	21	10
1.25	56	41	31	52	39	29	45	34	26	13
1.50	62	47	36	57	44	34	49	38	30	15
2.00	70	56	45	65	52	43	55	45	37	20
2.50	75	62	52	69	58	49	59	50	43	23
3.00	79	67	58	73	63	54	62	54	47	26
4.00	85	74	66	78	69	61	66	59	53	30
5.00	88	79	72	82	74	67	69	63	57	33
ROOM INDEX	UF(total)									Direct
According to DIN EN 13032-2 2004			Suspended				SHRNOM = 1.25			

C Range: 0 - 360DEG  
 C Interval: 22.5DEG  
 Test Speed: HIGH  
 Temperature:25.2°C  
 Operators:Dano  
 Test Date:2023-05-15

$\gamma$  Range: 0 - 180DEG  
 $\gamma$  Interval: 1.0DEG  
 Test System:EVERFINE GO-R5000\_V2 SYSTEM V2.00.459  
 Humidity:55.3%  
 Test Distance:2.900m [K=0.8810]  
 Remarks:

ISOCANDELA DIAGRAM

Test:U:120.1V I:0.1971A P:23.51W PF:0.9934 Freq:60.01Hz Lamp Flux:1202.74x1 lm		
NAME: PT27-4-3x8S-952C5-MVTD-BN 3500K	TYPE:	WEIGHT:
SPEC.:	DIM.:	SERIAL No.:
MFR.: FOSHAN LEDKEY LIGHTING CO.,LTD.	SUR.:	Shielding Angle:



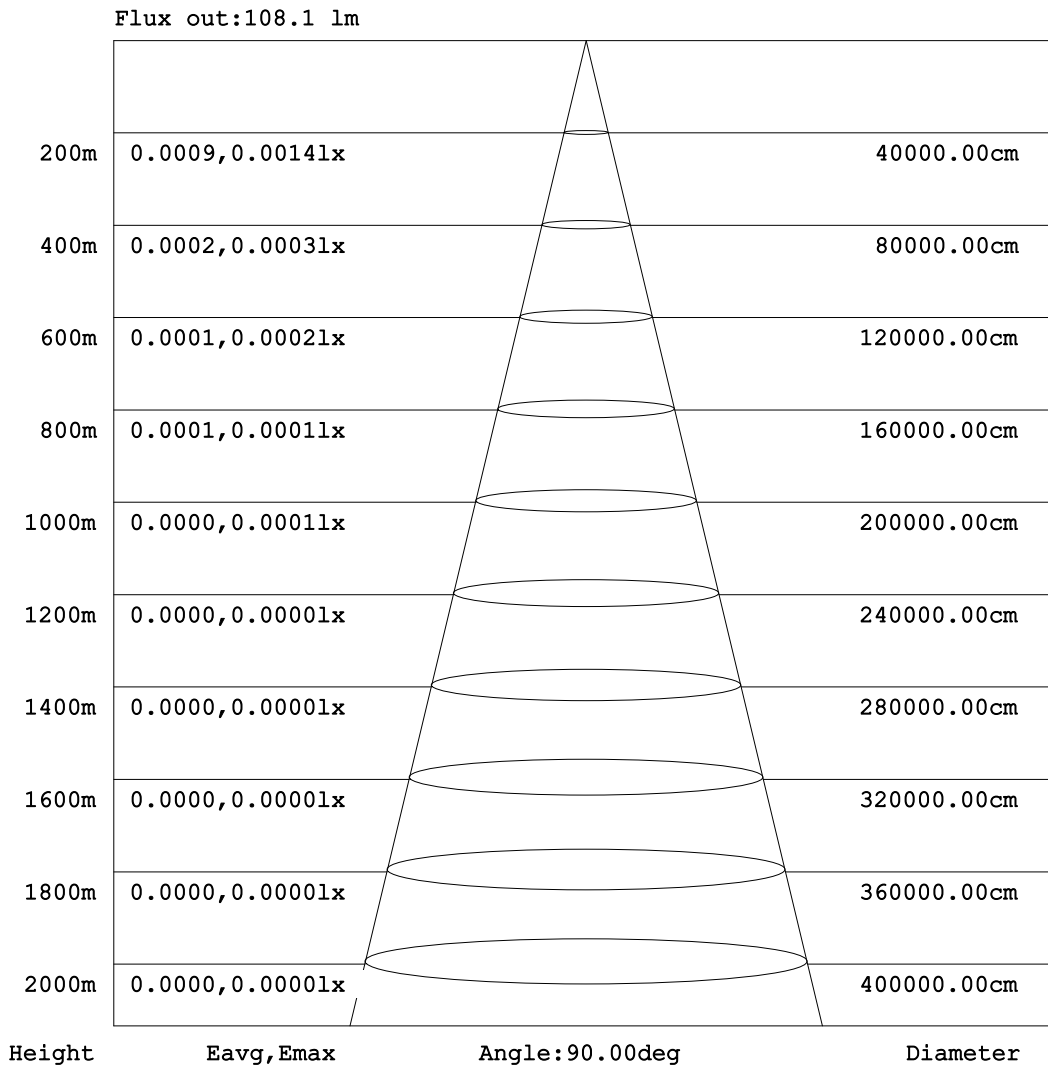
C Range: 0 - 360DEG  
 C Interval: 22.5DEG  
 Test Speed: HIGH  
 Temperature:25.2℃  
 Operators:Dano  
 Test Date:2023-05-15

γ Range: 0 - 180DEG  
 γ Interval: 1.0DEG  
 Test System:EVERFINE GO-R5000\_V2 SYSTEM V2.00.459  
 Humidity:55.3%  
 Test Distance:2.900m [K=0.8810]  
 Remarks:



**AAI Figure**

Test:U:120.1V I:0.1971A P:23.51W PF:0.9934 Freq:60.01Hz Lamp Flux:1202.74x1 lm		
NAME: PT27-4-3x8S-952C5-MVTD-BN 3500K	TYPE:	WEIGHT:
SPEC.:	DIM.:	SERIAL No.:
MFR.: FOSHAN LEDKEY LIGHTING CO.,LTD.	SUR.:	Shielding Angle:



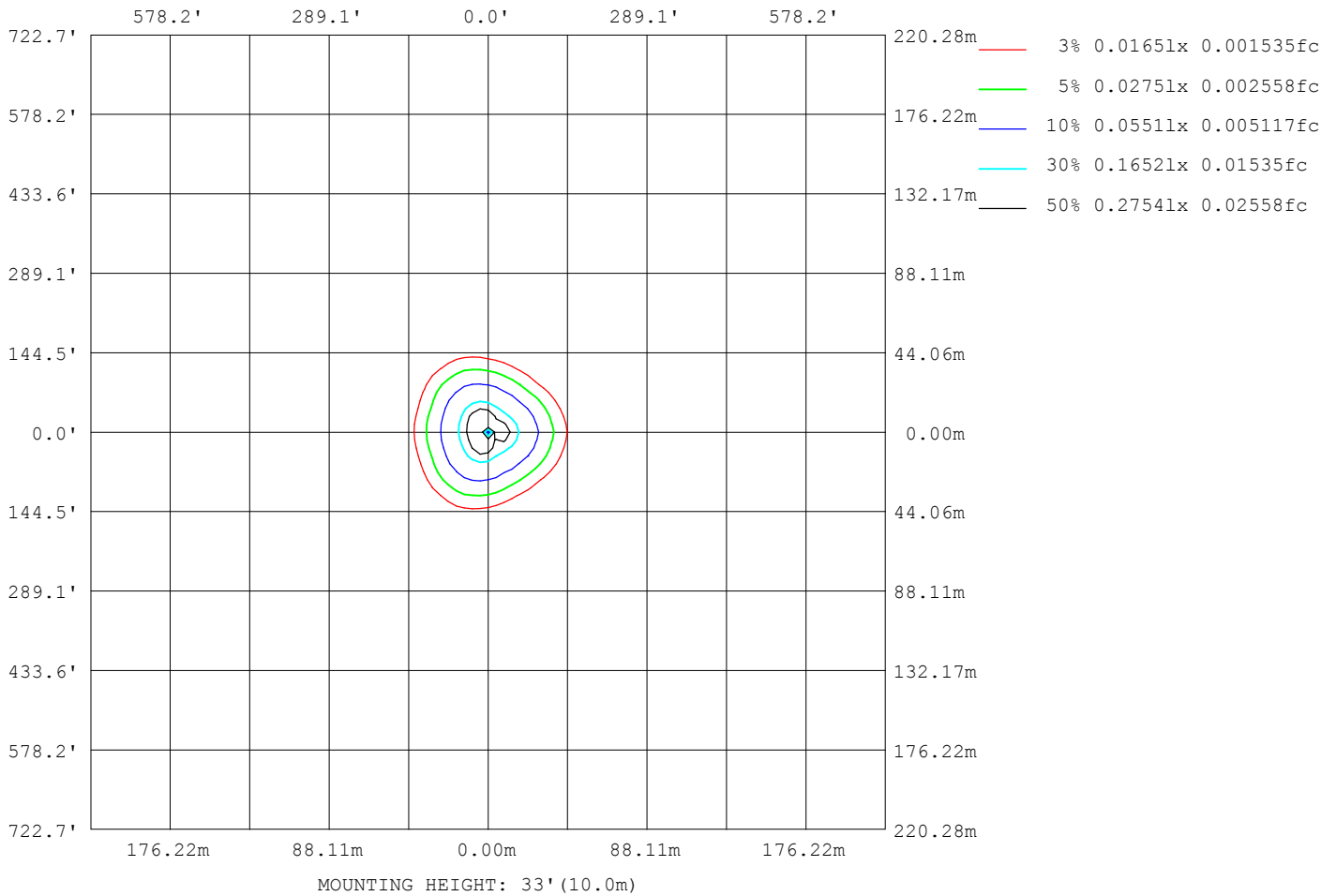
Note:The Curves indicate the illuminated area and the average illumination when the luminaire is at different distance.

C Range: 0 - 360DEG  
 C Interval: 22.5DEG  
 Test Speed: HIGH  
 Temperature:25.2℃  
 Operators:Dano  
 Test Date:2023-05-15

γ Range: 0 - 180DEG  
 γ Interval: 1.0DEG  
 Test System:EVERFINE GO-R5000\_V2 SYSTEM V2.00.459  
 Humidity:55.3%  
 Test Distance:2.900m [K=0.8810]  
 Remarks:

ISOLUX DIAGRAM

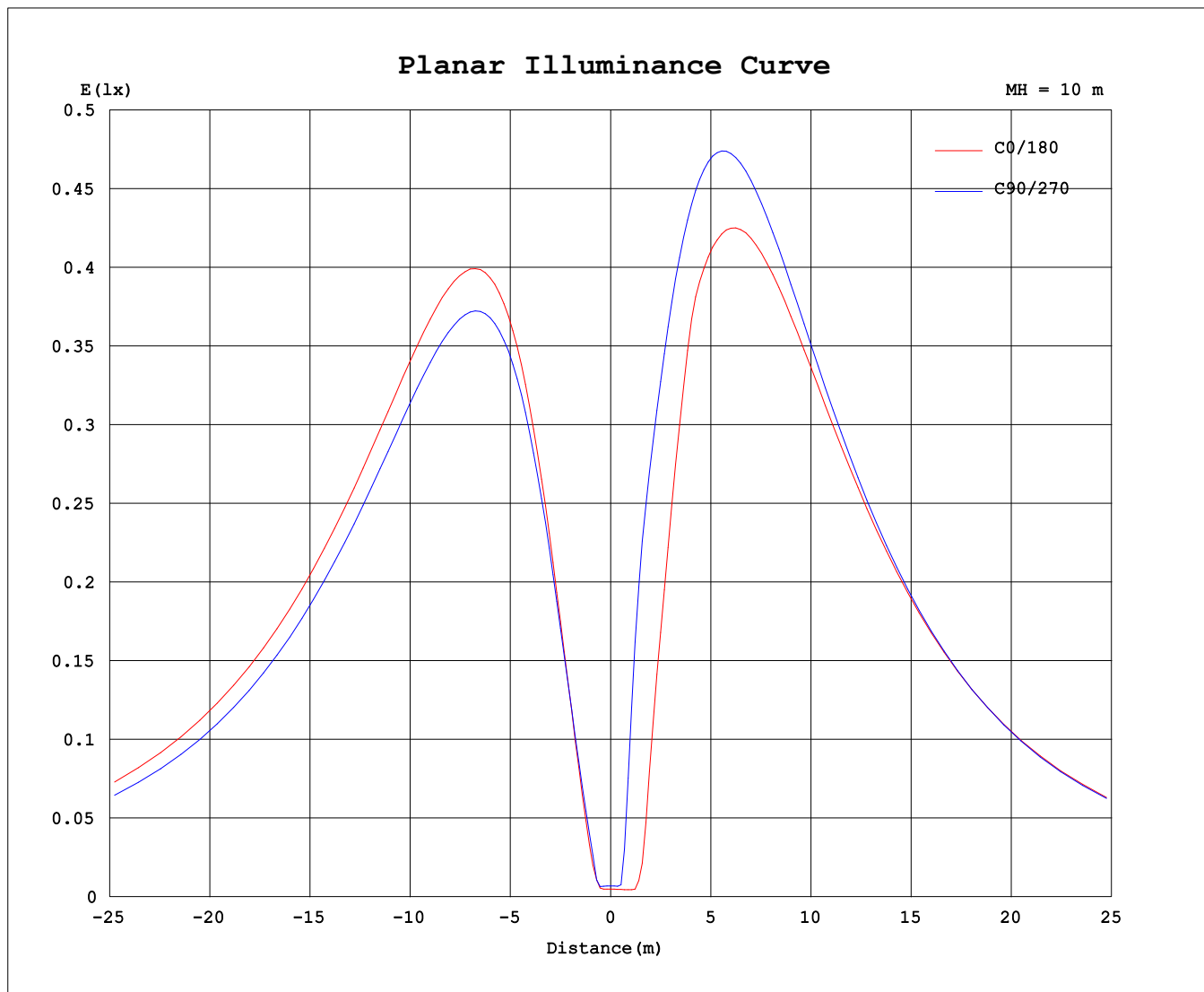
Test:U:120.1V I:0.1971A P:23.51W PF:0.9934 Freq:60.01Hz Lamp Flux:1202.74x1 lm		
NAME: PT27-4-3x8S-952C5-MVTD-BN 3500K	TYPE:	WEIGHT:
SPEC.:	DIM.:	SERIAL No.:
MFR.: FOSHAN LEDKEY LIGHTING CO.,LTD.	SUR.:	Shielding Angle:



C Range: 0 - 360DEG  
 C Interval: 22.5DEG  
 Test Speed: HIGH  
 Temperature:25.2°C  
 Operators:Dano  
 Test Date:2023-05-15

γ Range: 0 - 180DEG  
 γ Interval: 1.0DEG  
 Test System:EVERFINE GO-R5000\_V2 SYSTEM V2.00.459  
 Humidity:55.3%  
 Test Distance:2.900m [K=0.8810]  
 Remarks:

### Planar Illuminance Curve



C Range: 0 - 360DEG  
C Interval: 22.5DEG  
Test Speed: HIGH  
Temperature: 25.2°C  
Operators: Dano  
Test Date: 2023-05-15

γ Range: 0 - 180DEG  
γ Interval: 1.0DEG  
Test System: EVERFINE GO-R5000\_V2 SYSTEM V2.00.459  
Humidity: 55.3%  
Test Distance: 2.900m [K=0.8810]  
Remarks:

LUMINOUS DISTRIBUTION INTENSITY DATA

Test:U:120.1V I:0.1971A P:23.51W PF:0.9934 Freq:60.01Hz Lamp Flux:1202.74x1 lm		
NAME: PT27-4-3x8S-952C5-MVTD-BN 3500K	TYPE:	WEIGHT:
SPEC.:	DIM.:	SERIAL No.:
MFR.: FOSHAN LEDKEY LIGHTING CO.,LTD.	SUR.:	Shielding Angle:

Table--1

UNIT: cd

C (DEG) γ (DEG)	0	22.5	45	67.5	90	112.5	135	157.5	180	202.5	225	247.5	270	292.5	315	337.5			
0	0.64	0.64	0.64	0.64	0.64	0.64	0.64	0.64	0.64	0.64	0.64	0.64	0.64	0.64	0.64	0.64			
5	2.64	1.82	1.03	2.24	2.45	2.09	0.56	0.47	0.61	0.59	0.60	0.79	6.99	7.20	5.12	3.46			
10	13.5	10.34	6.14	7.50	9.79	11.5	10.9	7.47	6.45	9.90	17.8	23.6	23.9	16.5	12.3	8.80			
15	27.7	21.8	13.8	14.9	19.0	22.4	21.3	18.3	27.9	31.6	46.2	42.9	35.0	24.8	19.0	16.6			
20	43.8	35.0	22.9	21.8	29.5	34.5	33.0	30.4	50.4	56.2	63.5	58.0	46.1	33.7	26.1	26.2			
25	60.6	48.8	33.4	27.3	40.4	47.0	45.0	41.5	69.2	70.8	79.4	72.6	56.7	42.4	33.7	36.2			
30	77.3	62.7	44.5	33.2	51.2	59.5	56.9	51.4	84.2	84.7	94.6	86.4	66.6	49.7	41.5	46.2			
35	93.6	76.4	55.5	41.9	61.8	71.6	68.4	60.9	98.2	97.3	109	98.9	75.6	55.2	49.4	55.9			
40	109	89.5	66.1	52.1	71.7	83.1	79.3	69.8	111	109	121	110	83.7	59.7	57.0	65.2			
45	124	102	76.3	61.9	81.1	93.9	89.5	77.9	123	119	133	121	90.7	64.0	64.1	74.0			
50	138	114	85.8	71.1	89.6	104	99.0	85.1	133	128	143	130	96.6	69.6	70.5	82.2			
55	151	124	94.5	79.7	97.3	113	107	91.4	141	135	151	137	101	75.6	76.2	89.8			
60	163	134	102	87.5	104	121	115	96.8	148	141	158	143	105	81.0	81.2	96.5			
65	174	143	109	94.4	110	128	121	101	153	145	163	147	108	85.3	85.3	102			
70	183	150	114	100	114	133	127	104	156	147	166	150	109	88.6	88.6	107			
75	190	156	119	105	117	137	130	107	158	148	168	152	110	91.0	91.1	112			
80	196	161	122	108	119	140	133	108	158	148	167	151	110	92.1	92.8	115			
85	200	164	124	110	120	141	134	108	157	146	166	149	107	92.1	93.6	117			
90	202	165	125	110	119	140	133	107	154	143	162	146	104	90.6	93.5	117			
95	201	165	124	108	118	138	131	105	150	138	157	142	89.3	88.1	92.6	117			
100	199	163	122	105	115	135	128	101	145	133	151	136	87.6	85.0	90.8	116			
105	195	160	119	101	111	130	124	97.4	138	126	144	129	85.0	81.1	88.2	113			
110	188	155	115	96.4	106	124	118	92.6	130	119	136	122	80.6	76.4	84.9	109			
115	180	149	110	90.6	99.5	117	111	87.0	121	111	127	114	75.3	71.2	80.8	105			
120	170	141	103	84.1	92.7	109	104	80.7	111	102	117	105	69.8	65.6	76.1	98.9			
125	159	132	96.2	76.9	85.1	100.0	95.8	73.9	101	92.5	107	95.7	63.9	59.3	70.8	92.5			
130	147	122	88.1	69.3	77.1	90.5	86.9	66.5	89.5	82.5	95.8	86.1	57.6	52.6	64.8	85.2			
135	134	111	79.4	61.5	68.5	80.6	77.6	58.8	77.6	71.9	84.7	76.2	51.2	45.8	58.1	77.0			
140	119	99.0	70.0	53.7	59.5	70.3	67.8	50.8	65.5	61.0	73.1	66.3	44.7	38.6	50.8	68.0			
145	104	86.3	60.1	46.0	50.2	59.7	57.6	42.5	53.2	49.5	60.9	56.2	38.3	30.9	42.5	57.9			
150	88.0	73.1	50.0	37.9	40.8	48.9	47.3	34.2	41.0	38.0	48.4	46.0	31.9	23.4	33.5	47.0			
155	71.6	59.4	39.7	29.6	31.3	38.0	36.8	26.1	29.3	27.0	35.5	35.4	25.3	17.3	24.5	35.7			
160	54.9	45.5	29.7	21.4	22.0	27.3	26.5	18.5	18.6	17.0	23.3	24.8	17.9	12.5	16.3	25.0			
165	38.3	31.7	20.4	13.5	13.5	17.1	16.7	11.5	8.99	8.40	13.0	14.8	10.5	7.21	10.3	16.2			
170	22.5	18.9	12.5	6.59	6.34	8.28	8.14	5.35	2.15	2.06	4.99	6.32	3.95	2.13	3.22	9.50			
175	9.16	7.92	5.43	2.53	1.21	1.51	1.53	0.85	0.33	0.31	0.42	0.62	0.19	0.19	0.21	0.26			
180	0.00	0.00	0.00	0.07	0.01	0.15	0.16	0.16	0.17	0.17	0.19	0.18	0.20	0.15	0.16	0.17			

C Range: 0 - 360DEG  
 C Interval: 22.5DEG  
 Test Speed: HIGH  
 Temperature:25.2℃  
 Operators:Dano  
 Test Date:2023-05-15

γ Range: 0 - 180DEG  
 γ Interval: 1.0DEG  
 Test System:EVERFINE GO-R5000\_V2 SYSTEM V2.00.459  
 Humidity:55.3%  
 Test Distance:2.900m [K=0.8810]  
 Remarks: