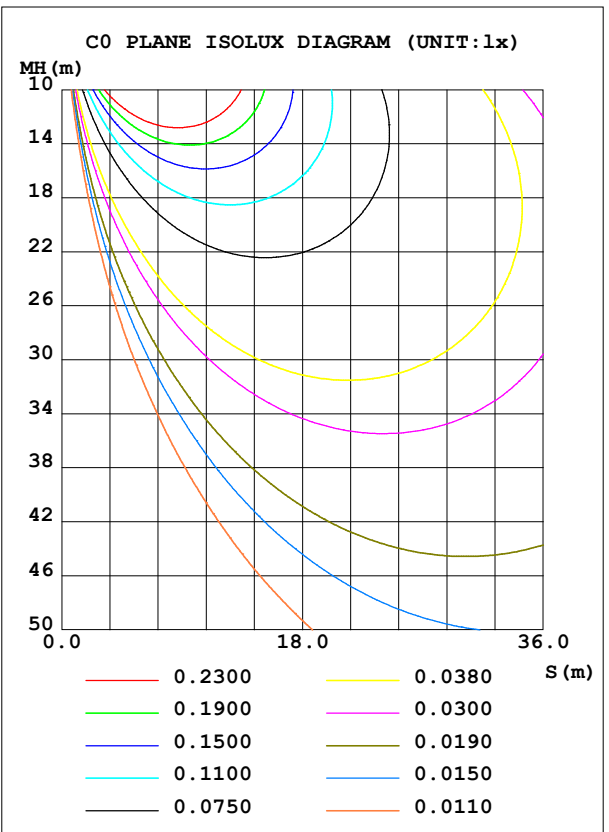
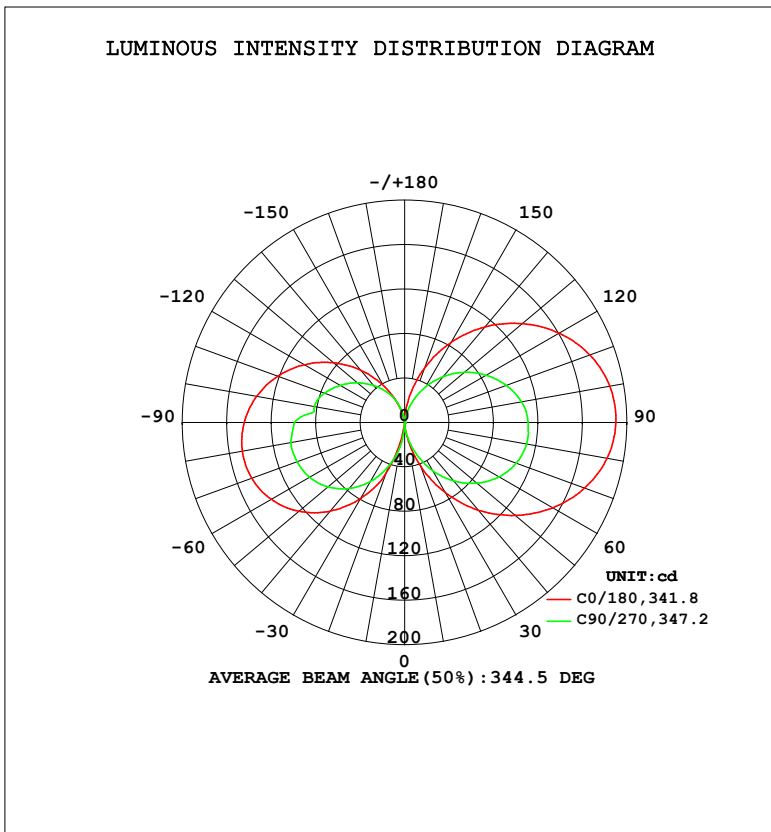


LUMINAIRE PHOTOMETRIC TEST REPORT

Test:U:120.1V I:0.1954A P:23.31W PF:0.9934 Freq:60.01Hz Lamp Flux:1130.87x1 lm		
NAME: PT27-4-3x8S-952C5-MVTD-BN 2700K	TYPE:	WEIGHT:
SPEC.:	DIM.:	SERIAL No.:
MFR.: FOSHAN LEDKEY LIGHTING CO.,LTD.	SUR.:	Shielding Angle:

DATA OF LAMP		PHOTOMETRIC DATA			
MODEL		Imax (cd)	190.1	S/MH (C0/180)	14.17
NOMINAL POWER (W)		LOR (%)	100.0	S/MH (C90/270)	12.41
RATED VOLTAGE (V)	120	TOTAL FLUX (lm)	1130.9	η UP, DN (C0-180)	25.1, 26.3
NOMINAL FLUX (lm)	1130.87	CIE CLASS	DIFFUSE	η UP, DN (C180-360)	21.7, 26.8
LAMPS INSIDE	1	η up (%)	46.8	CIBSE SHR NOM	1.25
TEST VOLTAGE (V)	120	η down (%)	53.2	CIBSE SHR MAX	1.35



C Range: 0 - 360DEG
 C Interval: 22.5DEG
 Test Speed: HIGH
 Temperature: 25.2°C
 Operators: Dano
 Test Date: 2023-05-15

γ Range: 0 - 180DEG
 γ Interval: 1.0DEG
 Test System: EVERFINE GO-R5000_V2 SYSTEM V2.00.459
 Humidity: 55.3%
 Test Distance: 2.900m [K=0.8810]
 Remarks:

ZONAL FLUX DIAGRAM

ZONAL FLUX DIAGRAM:

γ	C0	C45	C90	C135	C180	C225	C270	C315	γ	Φ zone	Φ total	%lum,lamp
10	12.74	5.752	10.72	12.04	6.754	19.70	20.45	10.44	0- 10	0.5551	0.5551	0.05,0.05
20	41.28	21.50	29.51	33.28	48.06	59.90	41.46	23.36	10- 20	7.052	7.607	0.67,0.67
30	72.72	41.85	49.80	55.69	78.78	89.24	61.14	37.64	20- 30	21.72	29.32	2.59,2.59
40	102.9	62.27	68.72	76.57	104.2	114.5	77.65	52.27	30- 40	42.40	71.73	6.34,6.34
50	130.2	80.80	85.06	94.83	124.4	134.7	90.29	65.16	40- 50	66.55	138.3	12.2,12.2
60	153.7	96.22	98.08	109.5	138.6	149.0	98.75	75.57	50- 60	90.95	229.2	20.3,20.3
70	172.5	107.7	107.0	119.9	146.5	156.9	103.1	83.03	60- 70	112.1	341.3	30.2,30.2
80	185.0	115.0	111.5	125.3	148.2	158.1	103.9	87.44	70- 80	126.9	468.2	41.4,41.4
90	190.0	117.5	111.3	125.3	144.4	153.0	99.14	88.55	80- 90	133.1	601.3	53.2,53.2
100	187.5	115.2	106.9	119.9	135.3	142.6	82.69	86.44	90-100	129.4	730.7	64.6,64.6
110	177.4	108.3	97.49	109.9	121.6	128.1	76.99	81.25	100-110	117.6	848.3	75,75
120	160.7	97.40	85.13	96.30	104.2	110.3	66.92	73.27	110-120	99.36	947.7	83.8,83.8
130	138.4	83.09	70.33	80.03	83.78	90.47	55.60	62.84	120-130	77.17	1025	90.6,90.6
140	112.2	66.00	53.78	61.87	61.42	68.92	43.51	49.79	130-140	53.89	1079	95.4,95.4
150	83.02	47.13	36.27	42.48	38.43	45.58	31.38	33.62	140-150	32.36	1111	98.3,98.3
160	51.75	28.06	18.92	23.01	17.40	21.97	18.38	16.85	150-160	15.10	1126	99.6,99.6
170	21.22	11.76	4.742	6.275	2.040	4.707	4.874	4.544	160-170	4.340	1131	100,100
180	0	0	0.0899	0	0.1619	0.1747	0.1508	0.1739	170-180	0.3202	1131	100,100
DEG	LUMINOUS INTENSITY:cd									UNIT:lm		

Conical surface Flux(90deg): 101.9 lm

%lum = 9.0%

%lamp = 9.0%

Conical surface Flux(120deg): 229.23 lm

%lum = 20.3%

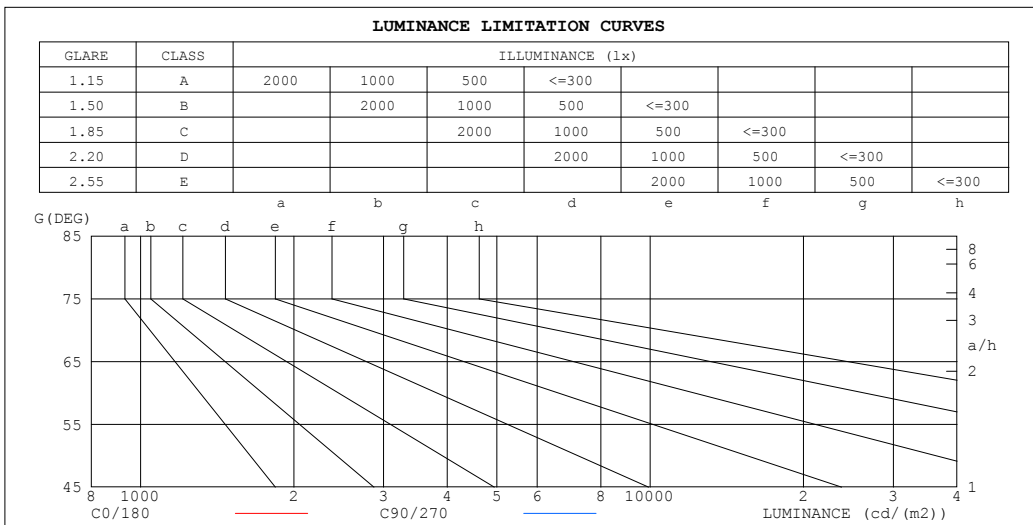
%lamp = 20.3%

C Range: 0 - 360DEG
C Interval: 22.5DEG
Test Speed: HIGH
Temperature:25.2℃
Operators:Dano
Test Date:2023-05-15

γ Range: 0 - 180DEG
 γ Interval: 1.0DEG
Test System:EVERFINE GO-R5000_V2 SYSTEM V2.00.459
Humidity:55.3%
Test Distance:2.900m [K=0.8810]
Remarks:

LUMINANCE LIMITATION CURVES

Test:U:120.1V I:0.1954A P:23.31W PF:0.9934 Freq:60.01Hz Lamp Flux:1130.87x1 lm		
NAME: PT27-4-3x8S-952C5-MVTD-BN 2700K	TYPE:	WEIGHT:
SPEC.:	DIM.:	SERIAL No.:
MFR.: FOSHAN LEDKEY LIGHTING CO.,LTD.	SUR.:	Shielding Angle:



LUMINANCE cd/(m2)		
G (DEG)	C0/180	C90/270
85	1340628	1116735
80	660252	558716
75	430076	369248
70	312497	272177
65	240233	212229
60	190575	170630
55	153956	139560
50	125511	115101
45	102561	95011

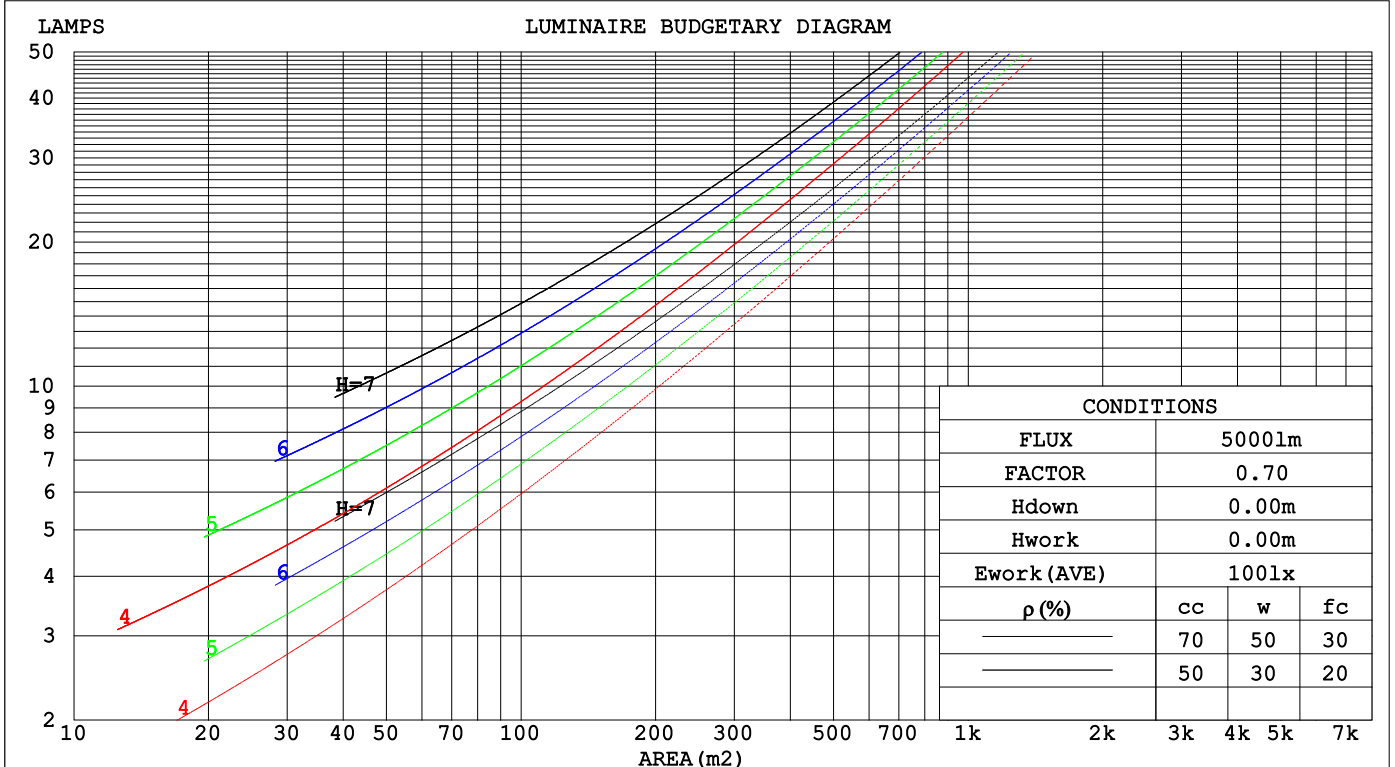
C Range: 0 - 360DEG
 C Interval: 22.5DEG
 Test Speed: HIGH
 Temperature:25.2℃
 Operators:Dano
 Test Date:2023-05-15

γ Range: 0 - 180DEG
 γ Interval: 1.0DEG
 Test System:EVERFINE GO-R5000_V2 SYSTEM V2.00.459
 Humidity:55.3%
 Test Distance:2.900m [K=0.8810]
 Remarks:

CU AND LUMINAIRE BUDGETARY ESTIMATE DIAGRAM

Test:U:120.1V I:0.1954A P:23.31W PF:0.9934 Freq:60.01Hz Lamp Flux:1130.87x1 lm		
NAME: PT27-4-3x8S-952C5-MVTD-BN 2700K	TYPE:	WEIGHT:
SPEC.:	DIM.:	SERIAL No.:
MFR.: FOSHAN LEDKEY LIGHTING CO.,LTD.	SUR.:	Shielding Angle:

ρcc	80%			70%			50%			30%			10%			0
ρw	50%	30%	10%	50%	30%	10%	50%	30%	10%	50%	30%	10%	50%	30%	10%	0
ρfc	20%			20%			20%			20%			20%			0
RCR	RCR:Room Cavity Ratio						Coefficients of Utilization(CU)									
0.0	1.08	1.08	1.08	.00	.00	.00	.85	.85	.85	.72	.72	.72	.59	.59	.59	.53
1.0	.85	.79	.74	.78	.73	.68	.65	.61	.57	.54	.50	.47	.43	.40	.38	.32
2.0	.71	.63	.55	.65	.57	.51	.54	.48	.43	.44	.39	.35	.34	.30	.27	.22
3.0	.61	.51	.43	.55	.47	.40	.46	.39	.33	.37	.31	.27	.28	.24	.20	.16
4.0	.52	.42	.35	.48	.39	.32	.39	.32	.26	.31	.26	.21	.24	.20	.16	.12
5.0	.46	.36	.29	.42	.33	.26	.34	.27	.22	.27	.22	.17	.21	.16	.13	.09
6.0	.40	.31	.24	.37	.28	.22	.30	.23	.18	.24	.19	.14	.19	.14	.11	.07
7.0	.36	.27	.20	.33	.25	.19	.27	.20	.15	.22	.16	.12	.17	.12	.09	.06
8.0	.32	.24	.17	.30	.22	.16	.24	.18	.13	.20	.14	.10	.15	.11	.08	.05
9.0	.29	.21	.15	.27	.19	.14	.22	.16	.11	.18	.13	.09	.14	.10	.06	.04
10.0	.27	.19	.13	.24	.17	.12	.20	.14	.10	.16	.11	.08	.13	.09	.06	.03



C Range: 0 - 360DEG
 C Interval: 22.5DEG
 Test Speed: HIGH
 Temperature:25.2°C
 Operators:Dano
 Test Date:2023-05-15

γ Range: 0 - 180DEG
 γ Interval: 1.0DEG
 Test System:EVERFINE GO-R5000_V2 SYSTEM V2.00.459
 Humidity:55.3%
 Test Distance:2.900m [K=0.8810]
 Remarks:

WEC AND CCEC

Test:U:120.1V I:0.1954A P:23.31W PF:0.9934 Freq:60.01Hz Lamp Flux:1130.87x1 lm		
NAME: PT27-4-3x8S-952C5-MVTD-BN 2700K	TYPE:	WEIGHT:
SPEC.:	DIM.:	SERIAL No.:
MFR.: FOSHAN LEDKEY LIGHTING CO.,LTD.	SUR.:	Shielding Angle:

ρ _{cc}	80%			70%			50%			30%			10%			0
ρ _w	50%	30%	10%	50%	30%	10%	50%	30%	10%	50%	30%	10%	50%	30%	10%	0
ρ _{fc}	20%			20%			20%			20%			20%			0
RCR	RCR:Room Cavity Ratio						Wall Exitance Coefficients(WEC)									
0.0																
1.0	.448	.255	.081	.427	.243	.077	.386	.222	.071	.349	.201	.065	.315	.182	.059	
2.0	.368	.202	.062	.348	.192	.059	.311	.173	.054	.277	.156	.049	.246	.139	.044	
3.0	.318	.169	.051	.300	.160	.048	.266	.144	.044	.235	.129	.039	.205	.114	.035	
4.0	.281	.146	.043	.264	.138	.041	.233	.124	.037	.204	.110	.033	.177	.096	.029	
5.0	.252	.128	.037	.237	.121	.035	.208	.108	.032	.181	.096	.028	.157	.084	.025	
6.0	.228	.114	.033	.214	.108	.031	.188	.096	.028	.163	.085	.025	.141	.074	.022	
7.0	.209	.103	.029	.196	.098	.028	.172	.087	.025	.149	.076	.022	.128	.066	.019	
8.0	.192	.094	.026	.181	.089	.025	.158	.079	.023	.137	.069	.020	.117	.060	.017	
9.0	.178	.086	.024	.167	.082	.023	.146	.072	.021	.127	.063	.018	.108	.055	.016	
10.0	.166	.080	.022	.156	.075	.021	.136	.067	.019	.118	.058	.017	.100	.050	.014	

ρ _{cc}	80%			70%			50%			30%			10%			0
ρ _w	50%	30%	10%	50%	30%	10%	50%	30%	10%	50%	30%	10%	50%	30%	10%	0
ρ _{fc}	20%			20%			20%			20%			20%			0
RCR	RCR:Room Cavity Ratio						Ceiling Cavity Exitance Coefficients(CCEC)									
0.0	.547	.547	.547	.468	.468	.468	.319	.319	.319	.183	.183	.183	.059	.059	.059	
1.0	.550	.515	.483	.470	.442	.416	.322	.304	.288	.185	.176	.167	.059	.057	.054	
2.0	.545	.494	.451	.466	.425	.390	.320	.294	.272	.184	.171	.159	.059	.055	.052	
3.0	.538	.479	.432	.461	.413	.374	.316	.287	.262	.183	.168	.155	.059	.054	.051	
4.0	.530	.467	.419	.455	.404	.364	.313	.281	.257	.181	.165	.152	.058	.054	.050	
5.0	.523	.458	.411	.449	.397	.358	.309	.277	.252	.179	.163	.150	.058	.053	.049	
6.0	.515	.451	.405	.443	.391	.353	.306	.273	.250	.177	.161	.148	.057	.053	.049	
7.0	.508	.445	.401	.437	.386	.349	.302	.270	.247	.175	.159	.147	.057	.052	.049	
8.0	.501	.440	.398	.432	.382	.347	.299	.268	.246	.174	.158	.147	.056	.052	.049	
9.0	.495	.435	.395	.427	.378	.345	.296	.266	.245	.172	.157	.146	.056	.051	.048	
10.0	.489	.431	.393	.422	.375	.343	.293	.264	.244	.171	.156	.145	.055	.051	.048	

C Range: 0 - 360DEG
 C Interval: 22.5DEG
 Test Speed: HIGH
 Temperature:25.2℃
 Operators:Dano
 Test Date:2023-05-15

γ Range: 0 - 180DEG
 γ Interval: 1.0DEG
 Test System:EVERFINE GO-R5000_V2 SYSTEM V2.00.459
 Humidity:55.3%
 Test Distance:2.900m [K=0.8810]
 Remarks:

UGR(Unified Glare Rating) Table

Test:U:120.1V I:0.1954A P:23.31W PF:0.9934 Freq:60.01Hz										
Lamp Flux:1130.87x1 lm										
NAME: PT27-4-3x8S-952C5-MVTD-BN 2700K					TYPE:			WEIGHT:		
SPEC.:					DIM.:			SERIAL No.:		
MFR.: FOSHAN LEDKEY LIGHTING CO.,LTD.					SUR.:			Shielding Angle:		
ceiling/cavity	0.7	0.7	0.5	0.5	0.3	0.7	0.7	0.5	0.5	0.3
walls	0.5	0.3	0.5	0.3	0.3	0.5	0.3	0.5	0.3	0.3
working plane	0.2	0.2	0.2	0.2	0.2	0.2	0.2	0.2	0.2	0.2
Room dimensions	Viewed crosswise					Viewed endwise				
x = 2H y = 2H	24.1	26.4	25.9	28.2	30.5	25.2	27.5	26.9	29.3	31.6
3H	28.2	30.2	29.9	32.1	34.5	28.7	30.7	30.4	32.6	35.0
4H	30.3	32.2	32.0	34.1	36.5	30.4	32.4	32.2	34.3	36.7
6H	32.5	34.4	34.3	36.3	38.7	32.4	34.2	34.2	36.1	38.5
8H	33.7	35.5	35.6	37.4	39.9	33.4	35.2	35.2	37.1	39.5
12H	35.1	36.8	37.0	38.8	41.2	34.6	36.3	36.4	38.2	40.7
4H 2H	24.4	26.4	26.2	28.2	30.6	25.8	27.8	27.6	29.7	32.1
3H	28.6	30.4	30.5	32.3	34.7	29.6	31.3	31.4	33.2	35.7
4H	30.9	32.5	32.8	34.4	36.9	31.6	33.2	33.5	35.1	37.6
6H	33.4	34.8	35.3	36.8	39.3	33.7	35.2	35.6	37.1	39.6
8H	34.7	36.1	36.6	38.1	40.6	34.8	36.2	36.7	38.2	40.7
12H	36.3	37.5	38.2	39.5	42.1	36.1	37.4	38.0	39.3	41.9
8H 4H	31.2	32.6	33.1	34.5	37.1	32.2	33.5	34.1	35.5	38.0
6H	34.0	35.1	35.9	37.1	39.7	34.6	35.8	36.6	37.8	40.4
8H	35.5	36.6	37.5	38.6	41.2	36.0	37.1	38.0	39.1	41.7
12H	37.3	38.3	39.3	40.3	42.9	37.6	38.5	39.5	40.5	43.2
12H 4H	31.3	32.5	33.2	34.5	37.1	32.3	33.5	34.2	35.5	38.1
6H	34.1	35.2	36.1	37.2	39.8	34.9	36.0	36.9	38.0	40.6
8H	35.8	36.7	37.8	38.7	41.4	36.4	37.4	38.4	39.4	42.1
CIE190: 2010										

CIE190: 2010
Area: 0.001257 m2

C Range: 0 - 360DEG
C Interval: 22.5DEG
Test Speed: HIGH
Temperature:25.2℃
Operators:Dano
Test Date:2023-05-15

γ Range: 0 - 180DEG
γ Interval: 1.0DEG
Test System:EVERFINE GO-R5000_V2 SYSTEM V2.00.459
Humidity:55.3%
Test Distance:2.900m [K=0.8810]
Remarks:

UTILIZATION FACTORS TABLE

Test:U:120.1V I:0.1954A P:23.31W PF:0.9934 Freq:60.01Hz Lamp Flux:1130.87x1 lm		
NAME: PT27-4-3x8S-952C5-MVTD-BN 2700K	TYPE:	WEIGHT:
SPEC.:	DIM.:	SERIAL No.:
MFR.: FOSHAN LEDKEY LIGHTING CO.,LTD.	SUR.:	Shielding Angle:

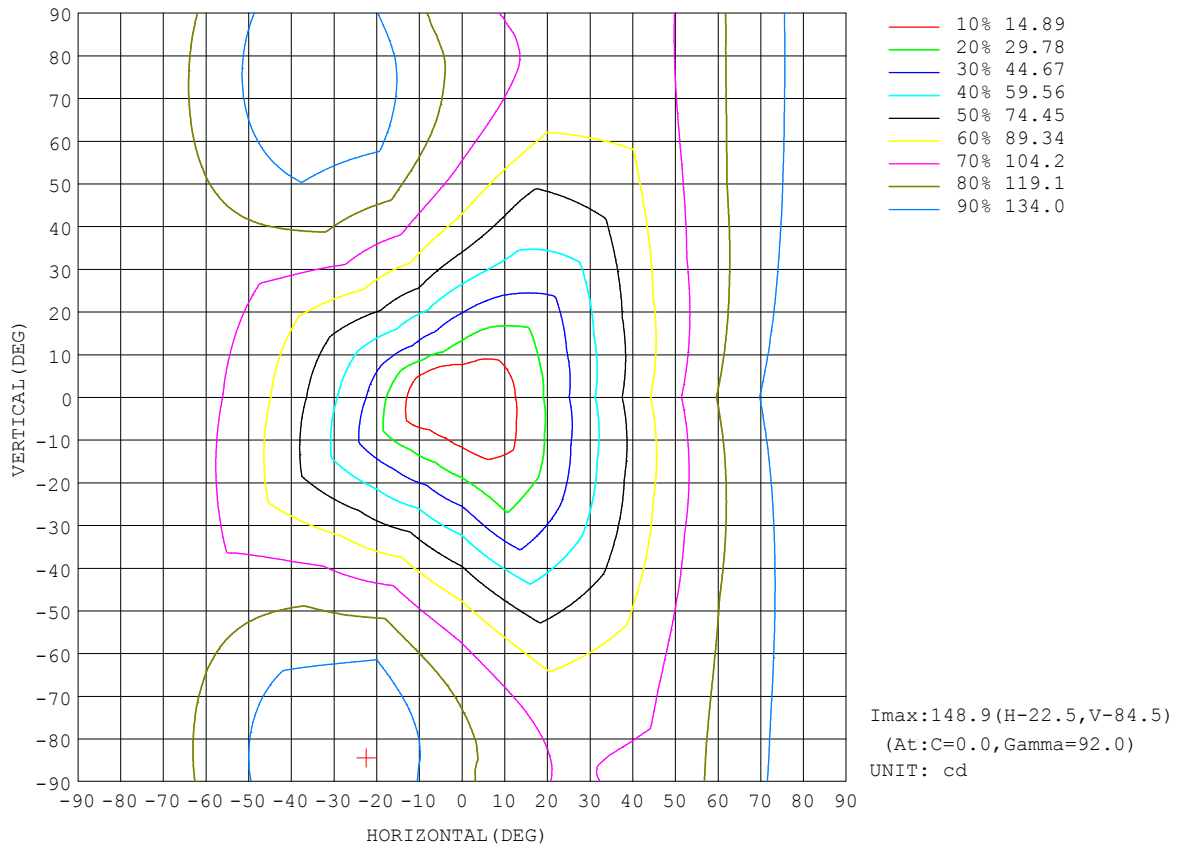
REFLECTANCE										
Ceiling	0.8	0.8	0.8	0.7	0.7	0.7	0.5	0.5	0.5	0
Walls	0.7	0.5	0.3	0.7	0.5	0.3	0.7	0.5	0.3	0
Working plane	0.2	0.2	0.2	0.2	0.2	0.2	0.2	0.2	0.2	0
ROOM INDEX	UTILIZATION FACTORS (PERCENT) $k(RI) \times RCR = 5$									
k = 0.60	34	21	13	32	20	13	29	18	12	4
0.80	42	28	19	40	26	18	35	24	16	7
1.00	49	34	25	46	32	24	40	31	21	10
1.25	56	41	31	52	39	29	45	34	26	13
1.50	62	47	36	57	44	34	49	38	30	15
2.00	70	56	45	65	52	43	55	45	38	20
2.50	75	62	52	69	58	49	59	50	43	23
3.00	79	67	58	73	63	54	62	54	47	26
4.00	85	74	66	78	69	61	66	59	53	30
5.00	88	79	72	82	74	67	69	63	57	33
ROOM INDEX	UF(total)									Direct
According to DIN EN 13032-2 2004			Suspended				SHRNOM = 1.25			

C Range: 0 - 360DEG
 C Interval: 22.5DEG
 Test Speed: HIGH
 Temperature:25.2°C
 Operators:Dano
 Test Date:2023-05-15

γ Range: 0 - 180DEG
 γ Interval: 1.0DEG
 Test System:EVERFINE GO-R5000_V2 SYSTEM V2.00.459
 Humidity:55.3%
 Test Distance:2.900m [K=0.8810]
 Remarks:

ISOCANDELA DIAGRAM

Test:U:120.1V I:0.1954A P:23.31W PF:0.9934 Freq:60.01Hz Lamp Flux:1130.87x1 lm		
NAME: PT27-4-3x8S-952C5-MVTD-BN 2700K	TYPE:	WEIGHT:
SPEC.:	DIM.:	SERIAL No.:
MFR.: FOSHAN LEDKEY LIGHTING CO.,LTD.	SUR.:	Shielding Angle:

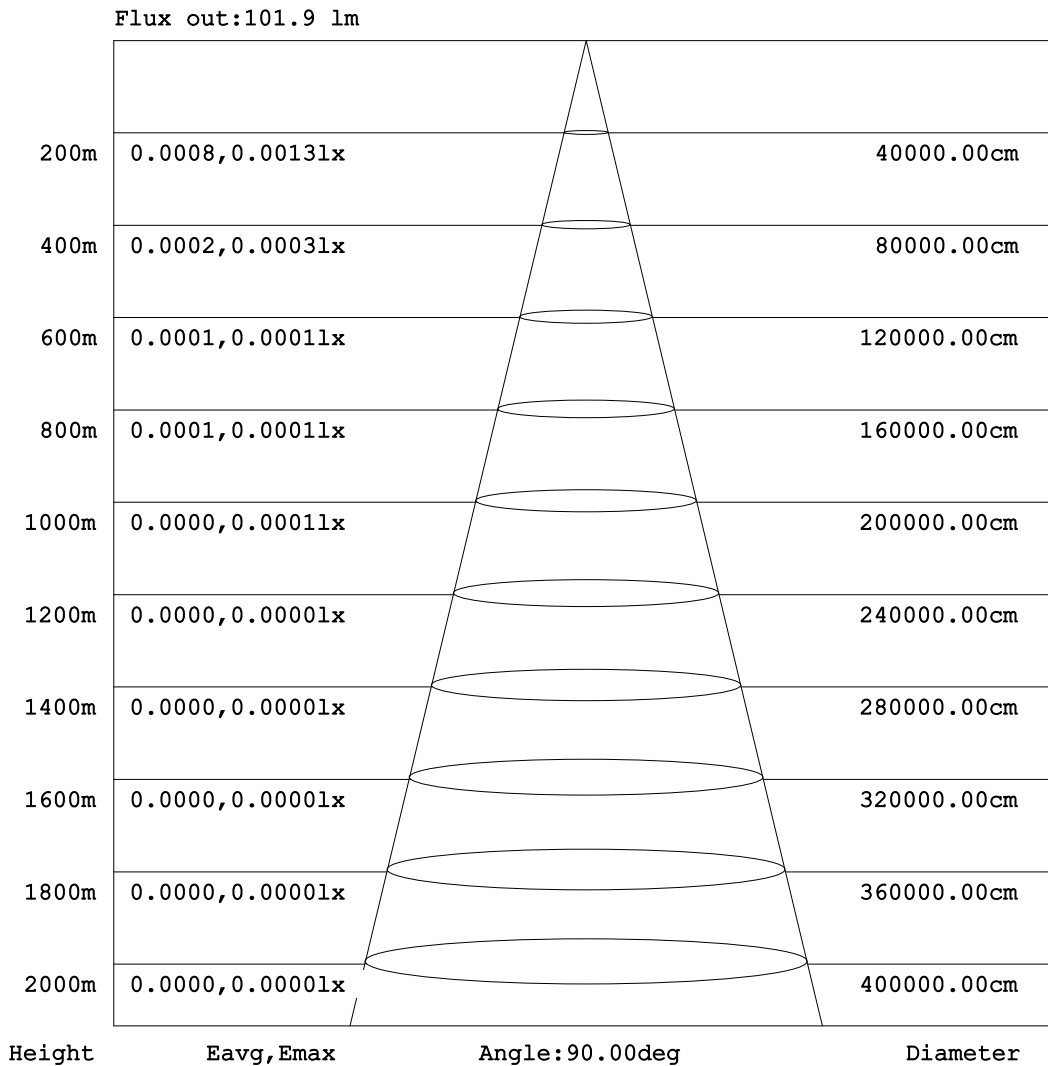


C Range: 0 - 360DEG
 C Interval: 22.5DEG
 Test Speed: HIGH
 Temperature:25.2°C
 Operators:Dano
 Test Date:2023-05-15

γ Range: 0 - 180DEG
 γ Interval: 1.0DEG
 Test System:EVERFINE GO-R5000_V2 SYSTEM V2.00.459
 Humidity:55.3%
 Test Distance:2.900m [K=0.8810]
 Remarks:

AAI Figure

Test:U:120.1V I:0.1954A P:23.31W PF:0.9934 Freq:60.01Hz Lamp Flux:1130.87x1 lm		
NAME: PT27-4-3x8S-952C5-MVTD-BN 2700K	TYPE:	WEIGHT:
SPEC.:	DIM.:	SERIAL No.:
MFR.: FOSHAN LEDKEY LIGHTING CO.,LTD.	SUR.:	Shielding Angle:



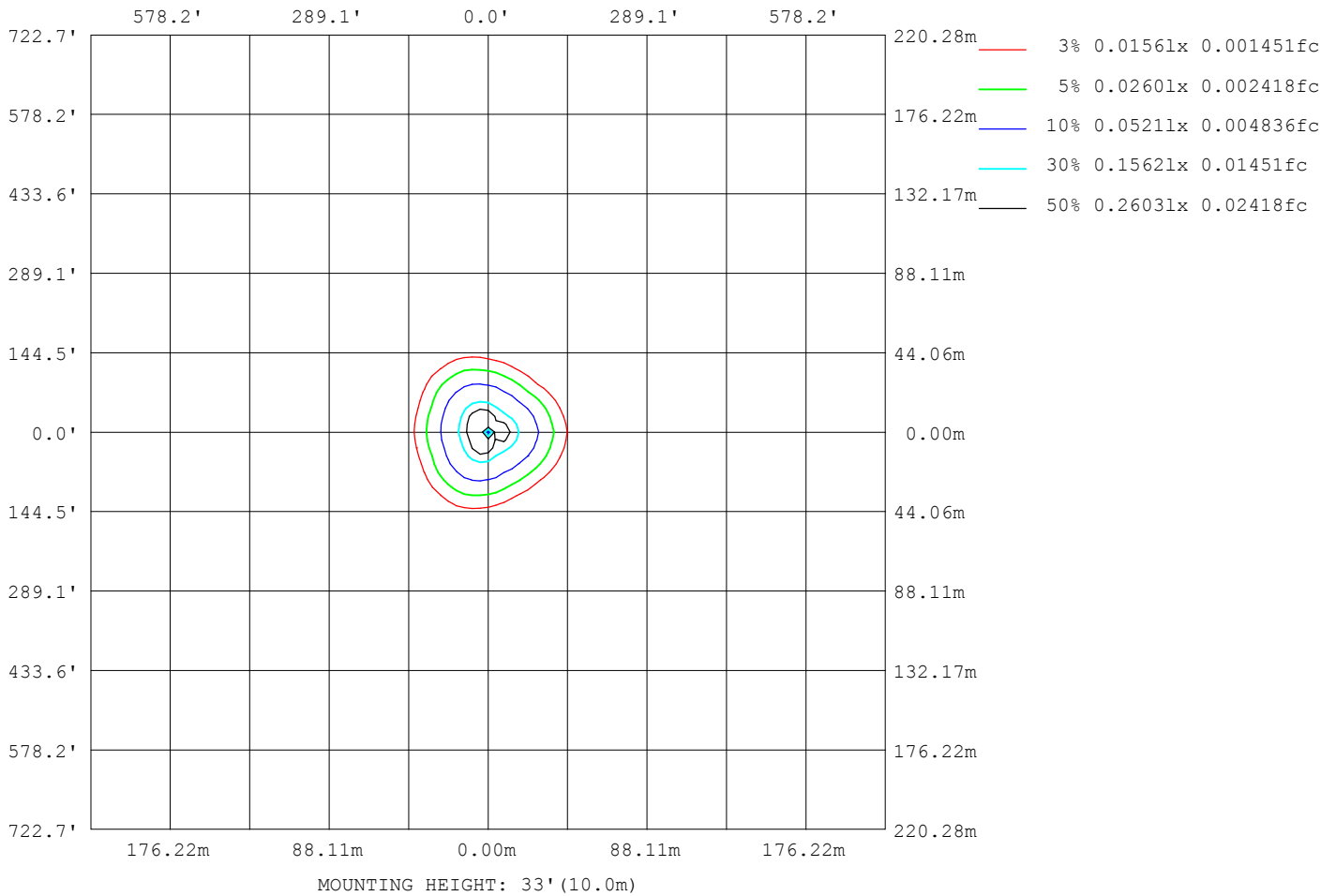
Note:The Curves indicate the illuminated area and the average illumination when the luminaire is at different distance.

C Range: 0 - 360DEG
 C Interval: 22.5DEG
 Test Speed: HIGH
 Temperature:25.2℃
 Operators:Dano
 Test Date:2023-05-15

γ Range: 0 - 180DEG
 γ Interval: 1.0DEG
 Test System:EVERFINE GO-R5000_V2 SYSTEM V2.00.459
 Humidity:55.3%
 Test Distance:2.900m [K=0.8810]
 Remarks:

ISOLUX DIAGRAM

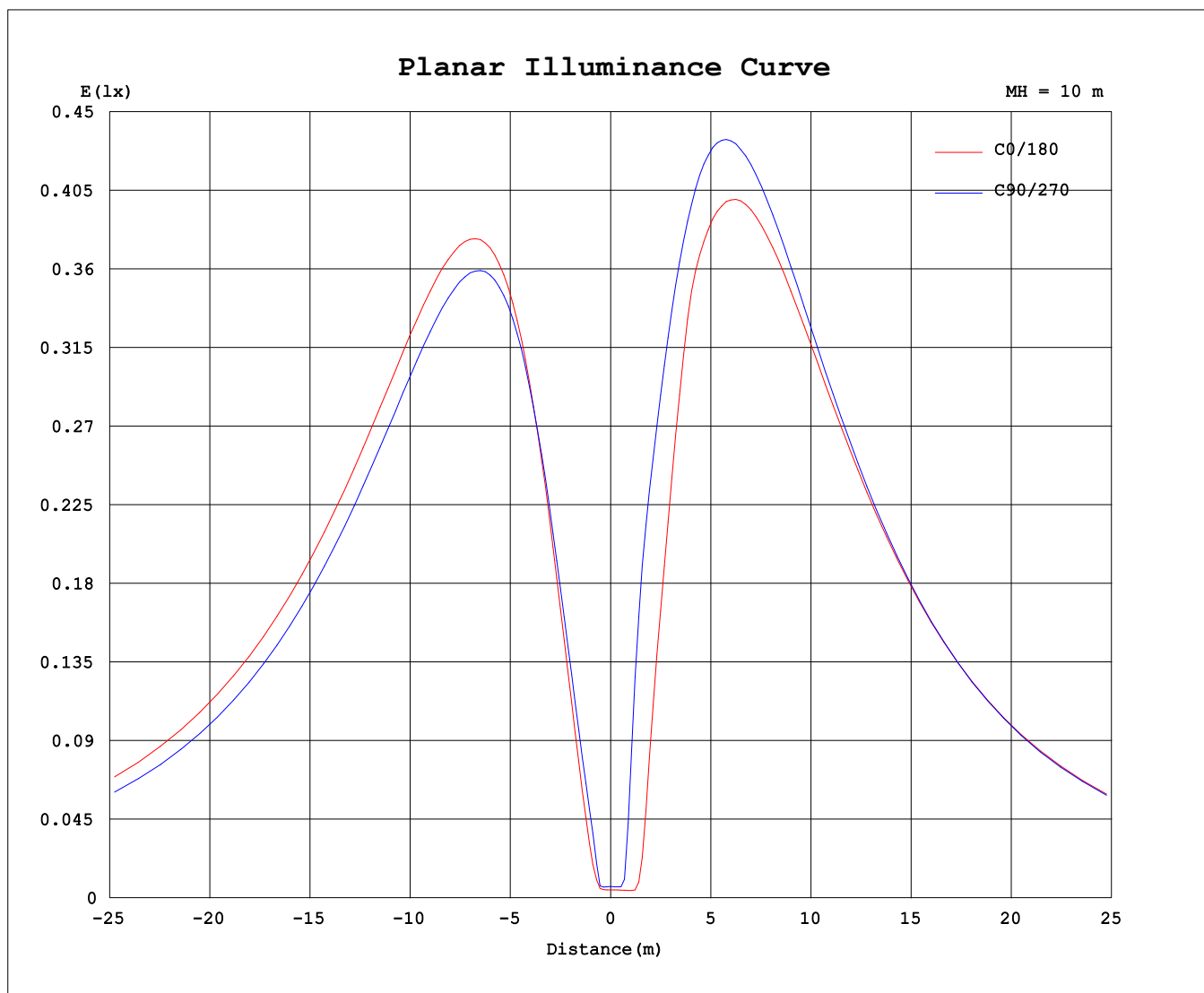
Test:U:120.1V I:0.1954A P:23.31W PF:0.9934 Freq:60.01Hz Lamp Flux:1130.87x1 lm		
NAME: PT27-4-3x8S-952C5-MVTD-BN 2700K	TYPE:	WEIGHT:
SPEC.:	DIM.:	SERIAL No.:
MFR.: FOSHAN LEDKEY LIGHTING CO.,LTD.	SUR.:	Shielding Angle:



C Range: 0 - 360DEG
 C Interval: 22.5DEG
 Test Speed: HIGH
 Temperature:25.2°C
 Operators:Dano
 Test Date:2023-05-15

γ Range: 0 - 180DEG
 γ Interval: 1.0DEG
 Test System:EVERFINE GO-R5000_V2 SYSTEM V2.00.459
 Humidity:55.3%
 Test Distance:2.900m [K=0.8810]
 Remarks:

Planar Illuminance Curve



C Range: 0 - 360DEG
C Interval: 22.5DEG
Test Speed: HIGH
Temperature: 25.2°C
Operators: Dano
Test Date: 2023-05-15

γ Range: 0 - 180DEG
γ Interval: 1.0DEG
Test System: EVERFINE GO-R5000_V2 SYSTEM V2.00.459
Humidity: 55.3%
Test Distance: 2.900m [K=0.8810]
Remarks:

LUMINOUS DISTRIBUTION INTENSITY DATA

Test:U:120.1V I:0.1954A P:23.31W PF:0.9934 Freq:60.01Hz Lamp Flux:1130.87x1 lm		
NAME: PT27-4-3x8S-952C5-MVTD-BN 2700K	TYPE:	WEIGHT:
SPEC.:	DIM.:	SERIAL No.:
MFR.: FOSHAN LEDKEY LIGHTING CO.,LTD.	SUR.:	Shielding Angle:

Table--1

UNIT: cd

C (DEG) γ (DEG)	0	22.5	45	67.5	90	112.5	135	157.5	180	202.5	225	247.5	270	292.5	315	337.5			
0	0.60	0.60	0.60	0.60	0.60	0.60	0.60	0.60	0.60	0.60	0.60	0.60	0.60	0.60	0.60	0.60			
5	2.49	1.70	0.97	2.10	3.43	3.66	1.81	0.49	0.57	0.55	0.58	1.69	3.97	4.37	2.85	4.31			
10	12.74	9.69	5.75	7.01	10.7	12.7	12.0	4.70	6.75	11.31	19.7	24.4	20.4	14.2	10.4	9.64			
15	26.1	20.5	13.0	13.9	19.6	23.2	22.1	14.7	27.1	32.2	44.2	40.5	30.9	22.0	17.0	17.2			
20	41.3	32.9	21.5	20.4	29.5	34.7	33.3	25.7	48.1	53.0	59.9	54.8	41.5	30.5	23.4	26.2			
25	57.0	45.9	31.5	25.6	39.7	46.5	44.6	36.2	64.8	66.6	75.0	68.6	51.6	38.9	30.4	35.5			
30	72.7	59.0	41.9	31.2	49.8	58.2	55.7	45.3	78.8	79.5	89.2	81.5	61.1	46.2	37.6	44.7			
35	88.1	71.7	52.2	39.3	59.5	69.4	66.4	54.1	92.0	91.4	102	93.5	69.8	51.7	45.1	53.6			
40	103	84.0	62.3	48.8	68.7	80.2	76.6	62.3	104	102	114	104	77.6	56.1	52.3	62.2			
45	117	95.8	71.9	58.0	77.2	90.2	86.1	69.9	115	112	125	114	84.4	60.1	59.0	70.3			
50	130	107	80.8	66.7	85.1	99.4	94.8	76.7	124	120	135	122	90.3	65.1	65.2	77.8			
55	142	117	89.0	74.8	92.0	108	103	82.7	132	127	143	130	95.0	70.9	70.7	84.6			
60	154	126	96.2	82.1	98.1	115	110	87.8	139	132	149	135	98.8	76.2	75.6	90.8			
65	164	134	103	88.7	103	121	115	91.9	143	136	154	140	101	80.5	79.7	96.2			
70	172	141	108	94.1	107	126	120	95.1	147	138	157	142	103	83.9	83.0	101			
75	180	147	112	98.5	110	130	123	97.3	148	139	158	143	104	86.3	85.6	104			
80	185	151	115	102	112	132	125	98.6	148	139	158	143	104	87.6	87.4	107			
85	189	154	117	103	112	133	126	98.9	147	137	156	141	102	87.8	88.4	108			
90	190	156	118	103	111	132	125	98.1	144	134	153	138	99.1	86.8	88.5	109			
95	190	155	117	102	110	130	123	96.3	140	130	148	134	87.5	84.6	87.9	109			
100	188	154	115	98.9	107	126	120	93.6	135	125	143	129	82.7	81.6	86.4	107			
105	183	150	112	95.1	103	121	115	90.0	129	119	136	123	80.8	78.0	84.2	104			
110	177	146	108	90.4	97.5	115	110	85.7	122	112	128	116	77.0	73.7	81.3	101			
115	170	140	103	85.0	91.7	109	103	80.8	113	104	120	108	72.2	68.8	77.6	96.1			
120	161	132	97.4	79.0	85.1	101	96.3	75.1	104	95.9	110	99.5	66.9	63.6	73.3	90.7			
125	150	124	90.7	72.3	78.0	92.4	88.4	69.0	94.2	87.1	101	90.7	61.5	57.7	68.3	84.5			
130	138	115	83.1	65.1	70.3	83.4	80.0	62.3	83.8	77.7	90.5	81.5	55.6	51.3	62.8	77.6			
135	126	104	74.8	57.7	62.3	74.0	71.1	55.3	72.7	67.7	79.9	72.2	49.6	44.9	56.7	69.8			
140	112	93.1	66.0	50.5	53.8	64.2	61.9	48.0	61.4	57.3	68.9	62.7	43.5	38.3	49.8	61.2			
145	98.0	81.3	56.7	43.1	45.1	54.2	52.3	40.5	49.9	46.5	57.5	53.2	37.4	31.0	42.1	51.6			
150	83.0	68.8	47.1	35.6	36.3	44.0	42.5	32.9	38.4	35.7	45.6	43.5	31.4	23.7	33.6	41.4			
155	67.5	55.9	37.5	27.8	27.4	33.7	32.7	25.4	27.5	25.3	33.5	33.6	25.2	17.6	25.0	30.9			
160	51.7	42.8	28.1	20.1	18.9	23.7	23.0	18.3	17.4	15.9	22.0	23.5	18.4	12.9	16.9	21.4			
165	36.0	29.9	19.3	12.7	11.2	14.3	14.0	11.8	8.46	7.89	12.3	14.1	11.3	7.93	10.9	13.7			
170	21.2	17.8	11.8	6.19	4.74	6.32	6.28	5.94	2.04	1.94	4.71	6.02	4.87	2.92	4.54	6.90			
175	8.63	7.44	5.14	2.38	0.71	0.70	0.71	1.36	0.31	0.29	0.39	0.60	0.46	0.19	0.22	0.22			
180	0.00	0.00	0.00	0.00	0.09	0.16	0.00	0.14	0.16	0.16	0.17	0.17	0.15	0.16	0.17	0.15			

C Range: 0 - 360DEG
 C Interval: 22.5DEG
 Test Speed: HIGH
 Temperature:25.2℃
 Operators:Dano
 Test Date:2023-05-15

γ Range: 0 - 180DEG
 γ Interval: 1.0DEG
 Test System:EVERFINE GO-R5000_V2 SYSTEM V2.00.459
 Humidity:55.3%
 Test Distance:2.900m [K=0.8810]
 Remarks: