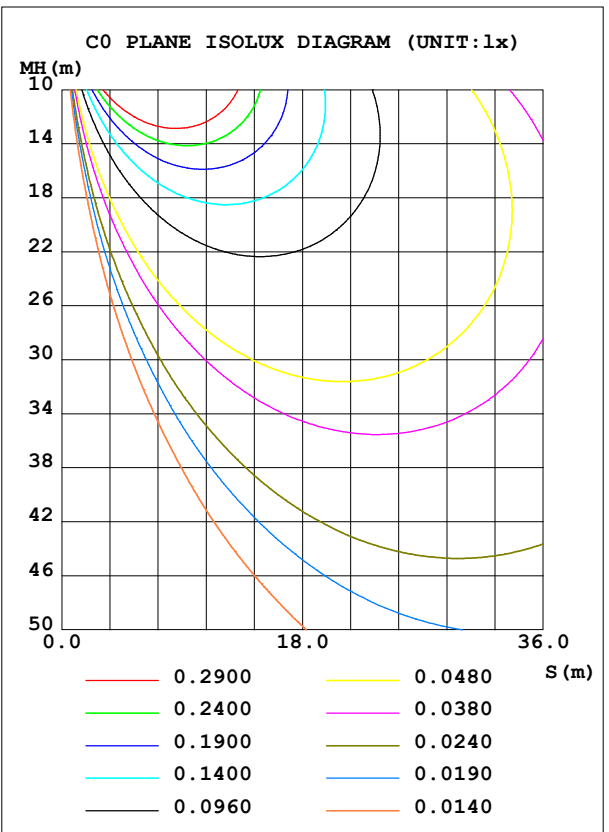
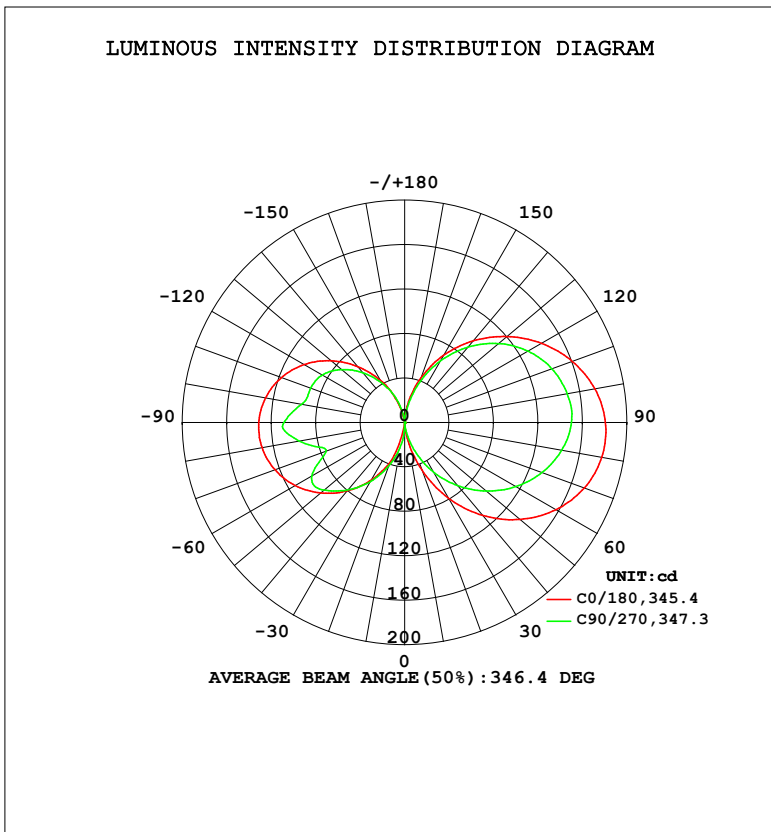


LUMINAIRE PHOTOMETRIC TEST REPORT

Test:U:120.0V I:0.2006A P:23.92W PF:0.9936 Freq:60.01Hz Lamp Flux:1309.19x1 lm		
NAME: PT27-4-3x8S-952C5-MVTD-SB002 5000K	TYPE:	WEIGHT:
SPEC.:	DIM.:	SERIAL No.:
MFR.: FOSHAN LEDKEY LIGHTING CO.,LTD.	SUR.:	Shielding Angle:

DATA OF LAMP		PHOTOMETRIC DATA				Eff: 54.73 lm/W
MODEL		Imax (cd)	181.4	S/MH (C0/180)	14.42	
NOMINAL POWER (W)		LOR (%)	100.0	S/MH (C90/270)	13.45	
RATED VOLTAGE (V)	120	TOTAL FLUX (lm)	1309.2	$\eta$ UP, DN (C0-180)	26.4, 25.3	
NOMINAL FLUX (lm)	1309.19	CIE CLASS	DIFFUSE	$\eta$ UP, DN (C180-360)	22.7, 25.6	
LAMPS INSIDE	1	$\eta$ up (%)	49.1	CIBSE SHR NOM	1.25	
TEST VOLTAGE (V)	120	$\eta$ down (%)	50.9	CIBSE SHR MAX	1.35	



C Range: 0 - 360DEG  
 C Interval: 22.5DEG  
 Test Speed: HIGH  
 Temperature: 25.2 °C  
 Operators: Dano  
 Test Date: 2023-05-15

$\gamma$  Range: 0 - 180DEG  
 $\gamma$  Interval: 1.0DEG  
 Test System: EVERFINE GO-R5000\_V2 SYSTEM V2.00.459  
 Humidity: 55.3%  
 Test Distance: 2.900m [K=0.8810]  
 Remarks:

ZONAL FLUX DIAGRAM

ZONAL FLUX DIAGRAM:

γ	C0	C45	C90	C135	C180	C225	C270	C315	γ	Φ zone	Φ total	%lum, lamp
10	14.56	5.858	7.868	8.013	2.396	23.17	21.61	13.68	0- 10	0.6251	0.6251	0.05,0.05
20	45.46	24.30	27.77	28.44	37.65	56.13	41.41	31.81	10- 20	7.205	7.830	0.60,0.60
30	78.49	47.78	51.09	52.28	59.53	84.59	61.22	55.25	20- 30	22.36	30.19	2.31,2.31
40	109.2	71.66	74.20	75.88	80.39	110.7	79.23	76.38	30- 40	44.74	74.93	5.72,5.72
50	135.7	93.48	96.01	97.86	98.83	133.5	94.71	93.82	40- 50	71.91	146.8	11.2,11.2
60	157.1	111.5	115.5	117.4	113.7	152.0	96.53	107.1	50- 60	99.93	246.8	18.8,18.8
70	172.2	124.8	131.7	133.5	124.3	165.4	75.13	115.9	60- 70	123.8	370.6	28.3,28.3
80	180.1	132.9	143.6	145.2	130.3	172.7	96.45	120.0	70- 80	142.2	512.8	39.2,39.2
90	180.7	135.4	150.1	151.4	131.3	173.2	108.6	119.4	80- 90	153.4	666.2	50.9,50.9
100	173.9	131.4	148.5	151.5	127.3	167.1	94.42	114.4	90-100	152.3	818.5	62.5,62.5
110	160.7	122.2	141.2	145.1	118.2	154.8	90.09	105.0	100-110	140.4	958.9	73.2,73.2
120	142.4	108.9	128.4	132.6	104.5	136.4	85.69	91.91	110-120	120.9	1080	82.5,82.5
130	120.4	92.37	110.6	115.0	86.51	112.8	74.25	75.81	120-130	95.46	1175	89.8,89.8
140	95.89	72.73	88.57	92.87	65.57	86.77	58.41	57.74	130-140	67.52	1243	94.9,94.9
150	69.50	50.89	63.54	67.28	43.98	59.37	40.65	37.68	140-150	40.94	1284	98.1,98.1
160	42.40	28.80	36.91	39.83	20.83	30.08	23.45	18.63	150-160	19.41	1303	99.5,99.5
170	16.85	10.15	12.34	14.08	3.027	6.280	4.846	5.375	160-170	5.568	1309	100,100
180	0	0.2145	0.2197	0.0131	0.2062	0.2154	0.3913	0.3764	170-180	0.4371	1309	100,100
DEG	LUMINOUS INTENSITY:cd									UNIT:lm		

Conical surface Flux(90deg): 107.34 lm

%lum = 8.2%

%lamp = 8.2%

Conical surface Flux(120deg): 246.77 lm

%lum = 18.8%

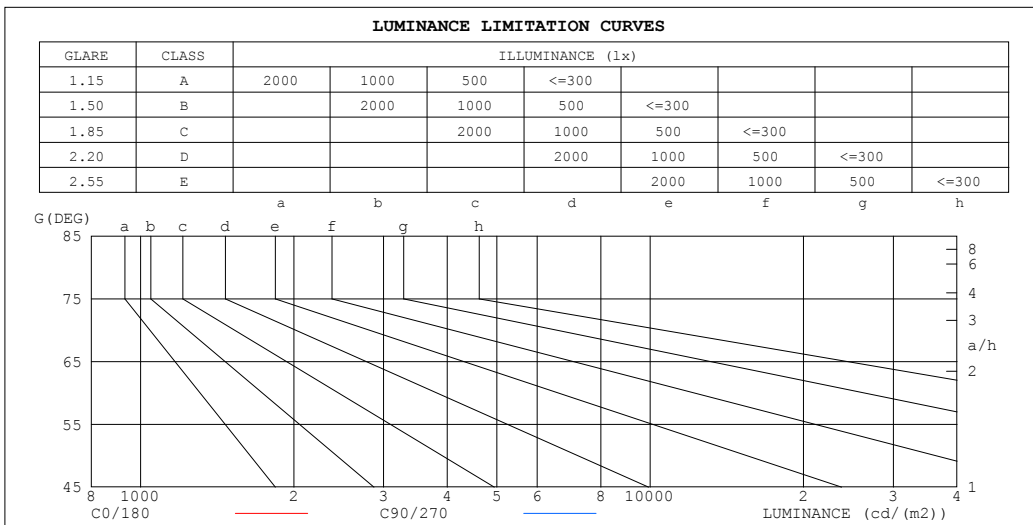
%lamp = 18.8%

C Range: 0 - 360DEG  
 C Interval: 22.5DEG  
 Test Speed: HIGH  
 Temperature:25.2℃  
 Operators:Dano  
 Test Date:2023-05-15

γ Range: 0 - 180DEG  
 γ Interval: 1.0DEG  
 Test System:EVERFINE GO-R5000\_V2 SYSTEM V2.00.459  
 Humidity:55.3%  
 Test Distance:2.900m [K=0.8810]  
 Remarks:

**LUMINANCE LIMITATION CURVES**

Test:U:120.0V I:0.2006A P:23.92W PF:0.9936 Freq:60.01Hz Lamp Flux:1309.19x1 lm		
NAME: PT27-4-3x8S-952C5-MVTD-SB002 5000K	TYPE:	WEIGHT:
SPEC.:	DIM.:	SERIAL No.:
MFR.: FOSHAN LEDKEY LIGHTING CO.,LTD.	SUR.:	Shielding Angle:



LUMINANCE cd/(m2)		
G (DEG)	C0/180	C90/270
85	1528964	1438446
80	762217	701313
75	502846	452981
70	369950	326562
65	287773	249135
60	230898	196024
55	188376	157066
50	155145	126706
45	127813	102331

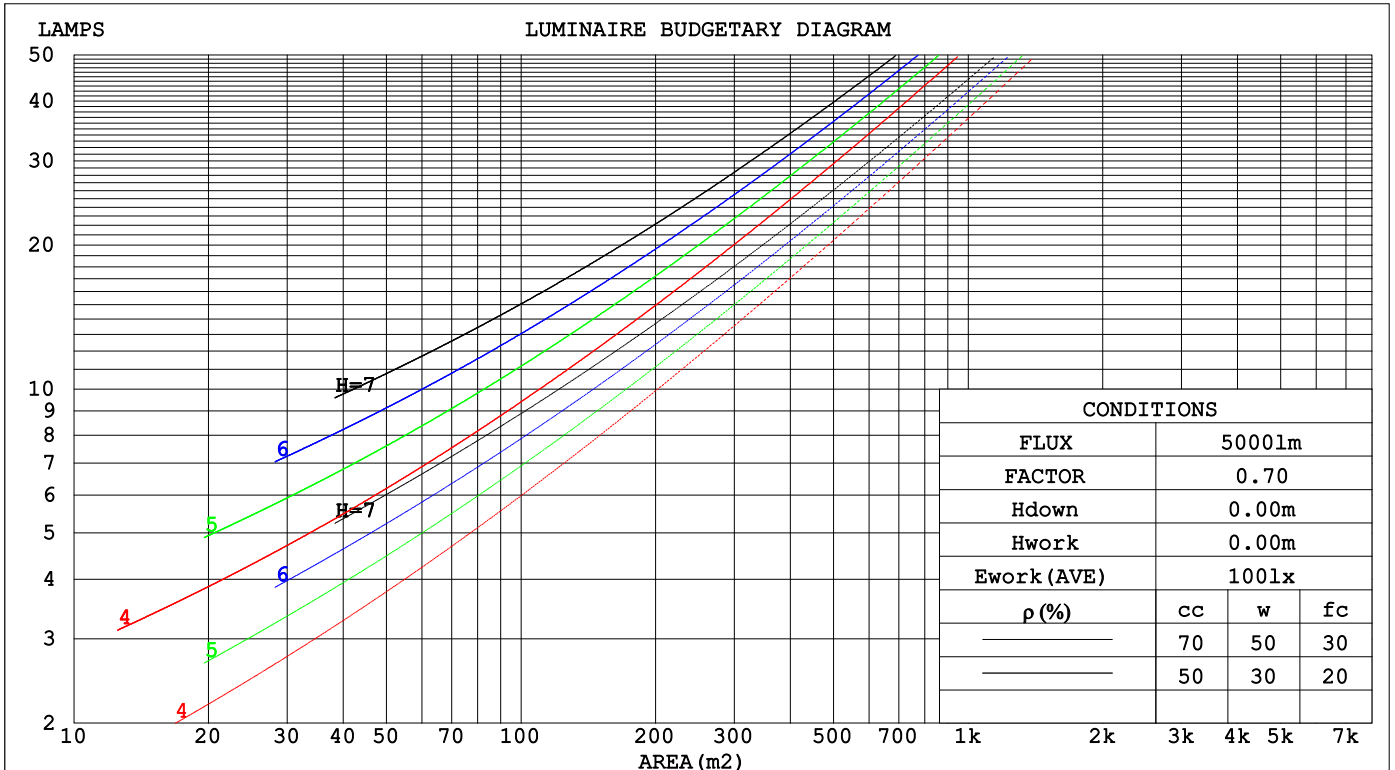
C Range: 0 - 360DEG  
 C Interval: 22.5DEG  
 Test Speed: HIGH  
 Temperature:25.2℃  
 Operators:Dano  
 Test Date:2023-05-15

γ Range: 0 - 180DEG  
 γ Interval: 1.0DEG  
 Test System:EVERFINE GO-R5000\_V2 SYSTEM V2.00.459  
 Humidity:55.3%  
 Test Distance:2.900m [K=0.8810]  
 Remarks:

**CU AND LUMINAIRE BUDGETARY ESTIMATE DIAGRAM**

Test:U:120.0V I:0.2006A P:23.92W PF:0.9936 Freq:60.01Hz Lamp Flux:1309.19x1 lm		
NAME: PT27-4-3x8S-952C5-MVTD-SB002 5000K	TYPE:	WEIGHT:
SPEC.:	DIM.:	SERIAL No.:
MFR.: FOSHAN LEDKEY LIGHTING CO.,LTD.	SUR.:	Shielding Angle:

pcc	80%			70%			50%			30%			10%			0
pw	50%	30%	10%	50%	30%	10%	50%	30%	10%	50%	30%	10%	50%	30%	10%	0
pfc	20%			20%			20%			20%			20%			0
RCR	RCR:Room Cavity Ratio						Coefficients of Utilization(CU)									
0.0	1.07	1.07	1.07	.99	.99	.99	.84	.84	.84	.70	.70	.70	.57	.57	.57	.51
1.0	.85	.79	.73	.78	.72	.67	.64	.60	.56	.52	.49	.46	.41	.38	.36	.30
2.0	.71	.62	.55	.65	.57	.51	.53	.47	.42	.42	.38	.34	.32	.29	.26	.21
3.0	.60	.51	.43	.55	.46	.40	.45	.38	.33	.36	.30	.26	.27	.23	.19	.15
4.0	.52	.42	.35	.48	.39	.32	.39	.32	.26	.31	.25	.21	.23	.19	.15	.11
5.0	.46	.36	.29	.42	.33	.26	.34	.27	.21	.27	.21	.17	.20	.16	.12	.09
6.0	.40	.31	.24	.37	.28	.22	.30	.23	.18	.24	.18	.14	.18	.13	.10	.07
7.0	.36	.27	.20	.33	.25	.19	.27	.20	.15	.21	.16	.12	.16	.12	.08	.06
8.0	.32	.24	.17	.30	.22	.16	.24	.18	.13	.19	.14	.10	.14	.10	.07	.05
9.0	.29	.21	.15	.27	.19	.14	.22	.16	.11	.17	.12	.09	.13	.09	.06	.04
10.0	.27	.19	.13	.24	.17	.12	.20	.14	.10	.16	.11	.08	.12	.08	.05	.03



C Range: 0 - 360DEG  
 C Interval: 22.5DEG  
 Test Speed: HIGH  
 Temperature:25.2°C  
 Operators:Dano  
 Test Date:2023-05-15

γ Range: 0 - 180DEG  
 γ Interval: 1.0DEG  
 Test System:EVERFINE GO-R5000\_V2 SYSTEM V2.00.459  
 Humidity:55.3%  
 Test Distance:2.900m [K=0.8810]  
 Remarks:

WEC AND CCEC

Test:U:120.0V I:0.2006A P:23.92W PF:0.9936 Freq:60.01Hz Lamp Flux:1309.19x1 lm		
NAME: PT27-4-3x8S-952C5-MVTD-SB002 5000K	TYPE:	WEIGHT:
SPEC.:	DIM.:	SERIAL No.:
MFR.: FOSHAN LEDKEY LIGHTING CO.,LTD.	SUR.:	Shielding Angle:

ρ <sub>cc</sub>	80%			70%			50%			30%			10%			0
ρ <sub>w</sub>	50%	30%	10%	50%	30%	10%	50%	30%	10%	50%	30%	10%	50%	30%	10%	0
ρ <sub>fc</sub>	20%			20%			20%			20%			20%			0
RCR	RCR:Room Cavity Ratio						Wall Exitance Coefficients(WEC)									
0.0																
1.0	.445	.253	.080	.423	.241	.077	.381	.219	.070	.343	.198	.063	.307	.178	.057	
2.0	.365	.200	.061	.345	.190	.059	.307	.171	.053	.272	.152	.048	.239	.135	.043	
3.0	.315	.168	.050	.297	.159	.048	.262	.142	.043	.229	.126	.039	.199	.110	.034	
4.0	.278	.145	.043	.261	.137	.040	.229	.122	.036	.200	.107	.032	.172	.093	.028	
5.0	.250	.127	.037	.234	.120	.035	.205	.107	.031	.177	.094	.028	.152	.081	.024	
6.0	.227	.114	.033	.212	.107	.031	.185	.095	.028	.160	.083	.024	.136	.072	.021	
7.0	.207	.103	.029	.194	.097	.028	.169	.085	.025	.145	.075	.022	.123	.064	.019	
8.0	.191	.093	.026	.179	.088	.025	.156	.078	.022	.134	.068	.020	.113	.058	.017	
9.0	.177	.086	.024	.166	.081	.023	.144	.071	.020	.124	.062	.018	.104	.053	.015	
10.0	.165	.079	.022	.154	.075	.021	.134	.066	.019	.115	.057	.016	.097	.049	.014	

ρ <sub>cc</sub>	80%			70%			50%			30%			10%			0
ρ <sub>w</sub>	50%	30%	10%	50%	30%	10%	50%	30%	10%	50%	30%	10%	50%	30%	10%	0
ρ <sub>fc</sub>	20%			20%			20%			20%			20%			0
RCR	RCR:Room Cavity Ratio						Ceiling Cavity Exitance Coefficients(CCEC)									
0.0																
1.0	.565	.565	.565	.483	.483	.483	.329	.329	.329	.189	.189	.189	.061	.061	.061	
2.0	.562	.532	.501	.485	.457	.431	.332	.314	.298	.191	.182	.173	.061	.059	.056	
3.0	.562	.511	.469	.481	.440	.405	.330	.305	.283	.190	.177	.166	.061	.057	.054	
4.0	.555	.496	.450	.476	.428	.390	.327	.298	.274	.189	.174	.161	.061	.056	.053	
5.0	.548	.485	.438	.470	.419	.380	.323	.292	.268	.187	.171	.158	.060	.056	.052	
6.0	.540	.476	.429	.464	.412	.373	.319	.288	.264	.185	.169	.156	.060	.055	.052	
7.0	.533	.469	.423	.458	.406	.369	.316	.284	.261	.183	.167	.155	.059	.055	.051	
8.0	.526	.463	.419	.452	.401	.365	.312	.281	.259	.181	.166	.154	.059	.054	.051	
9.0	.519	.458	.416	.447	.397	.363	.309	.279	.257	.180	.164	.153	.058	.054	.051	
10.0	.513	.453	.413	.442	.393	.360	.306	.277	.256	.178	.163	.153	.058	.054	.051	
10.0	.507	.449	.411	.437	.390	.359	.303	.275	.255	.177	.162	.152	.057	.053	.050	

C Range: 0 - 360DEG  
 C Interval: 22.5DEG  
 Test Speed: HIGH  
 Temperature:25.2℃  
 Operators:Dano  
 Test Date:2023-05-15

γ Range: 0 - 180DEG  
 γ Interval: 1.0DEG  
 Test System:EVERFINE GO-R5000\_V2 SYSTEM V2.00.459  
 Humidity:55.3%  
 Test Distance:2.900m [K=0.8810]  
 Remarks:

UGR(Unified Glare Rating) Table

Test:U:120.0V I:0.2006A P:23.92W PF:0.9936 Freq:60.01Hz Lamp Flux:1309.19x1 lm		
NAME: PT27-4-3x8S-952C5-MVTD-SB002 5000K	TYPE:	WEIGHT:
SPEC.:	DIM.:	SERIAL No.:
MFR.: FOSHAN LEDKEY LIGHTING CO.,LTD.	SUR.:	Shielding Angle:

ceiling/cavity	0.7	0.7	0.5	0.5	0.3	0.7	0.7	0.5	0.5	0.3
walls	0.5	0.3	0.5	0.3	0.3	0.5	0.3	0.5	0.3	0.3
working plane	0.2	0.2	0.2	0.2	0.2	0.2	0.2	0.2	0.2	0.2
Room dimensions	Viewed crosswise					Viewed endwise				
x = 2H y = 2H	24.6	26.8	26.4	28.7	31.1	25.1	27.3	26.9	29.2	31.6
3H	28.6	30.6	30.4	32.5	34.9	28.9	30.9	30.7	32.8	35.3
4H	30.6	32.5	32.4	34.4	36.9	30.9	32.8	32.7	34.7	37.2
6H	32.8	34.6	34.7	36.6	39.1	33.0	34.8	34.8	36.7	39.2
8H	34.0	35.8	35.9	37.7	40.2	34.1	35.9	36.0	37.8	40.3
12H	35.4	37.1	37.3	39.0	41.6	35.4	37.1	37.3	39.0	41.6
4H 2H	24.9	26.8	26.7	28.7	31.2	25.6	27.5	27.4	29.4	31.9
3H	29.0	30.7	30.9	32.7	35.2	29.7	31.4	31.6	33.3	35.9
4H	31.2	32.8	33.1	34.7	37.3	31.9	33.4	33.8	35.4	38.0
6H	33.6	35.0	35.6	37.0	39.6	34.2	35.6	36.1	37.6	40.2
8H	35.0	36.3	36.9	38.3	40.9	35.4	36.8	37.4	38.8	41.4
12H	36.5	37.7	38.4	39.7	42.3	36.8	38.1	38.8	40.1	42.7
8H 4H	31.6	32.9	33.5	34.9	37.5	32.4	33.7	34.3	35.7	38.3
6H	34.2	35.3	36.2	37.4	40.0	35.0	36.2	37.0	38.2	40.8
8H	35.7	36.8	37.7	38.8	41.5	36.5	37.5	38.5	39.6	42.3
12H	37.5	38.4	39.5	40.4	43.2	38.2	39.1	40.2	41.2	43.9
12H 4H	31.6	32.9	33.6	34.9	37.5	32.4	33.7	34.4	35.7	38.3
6H	34.4	35.4	36.4	37.5	40.1	35.2	36.3	37.2	38.3	41.0
8H	36.0	36.9	38.0	39.0	41.7	36.9	37.8	38.9	39.8	42.6
CIE190: 2010										

CIE190: 2010  
Area: 0.001257 m2

C Range: 0 - 360DEG  
C Interval: 22.5DEG  
Test Speed: HIGH  
Temperature:25.2℃  
Operators:Dano  
Test Date:2023-05-15

γ Range: 0 - 180DEG  
γ Interval: 1.0DEG  
Test System:EVERFINE GO-R5000\_V2 SYSTEM V2.00.459  
Humidity:55.3%  
Test Distance:2.900m [K=0.8810]  
Remarks:

**UTILIZATION FACTORS TABLE**

Test:U:120.0V I:0.2006A P:23.92W PF:0.9936 Freq:60.01Hz Lamp Flux:1309.19x1 lm		
NAME: PT27-4-3x8S-952C5-MVTD-SB002 5000K	TYPE:	WEIGHT:
SPEC.:	DIM.:	SERIAL No.:
MFR.: FOSHAN LEDKEY LIGHTING CO.,LTD.	SUR.:	Shielding Angle:

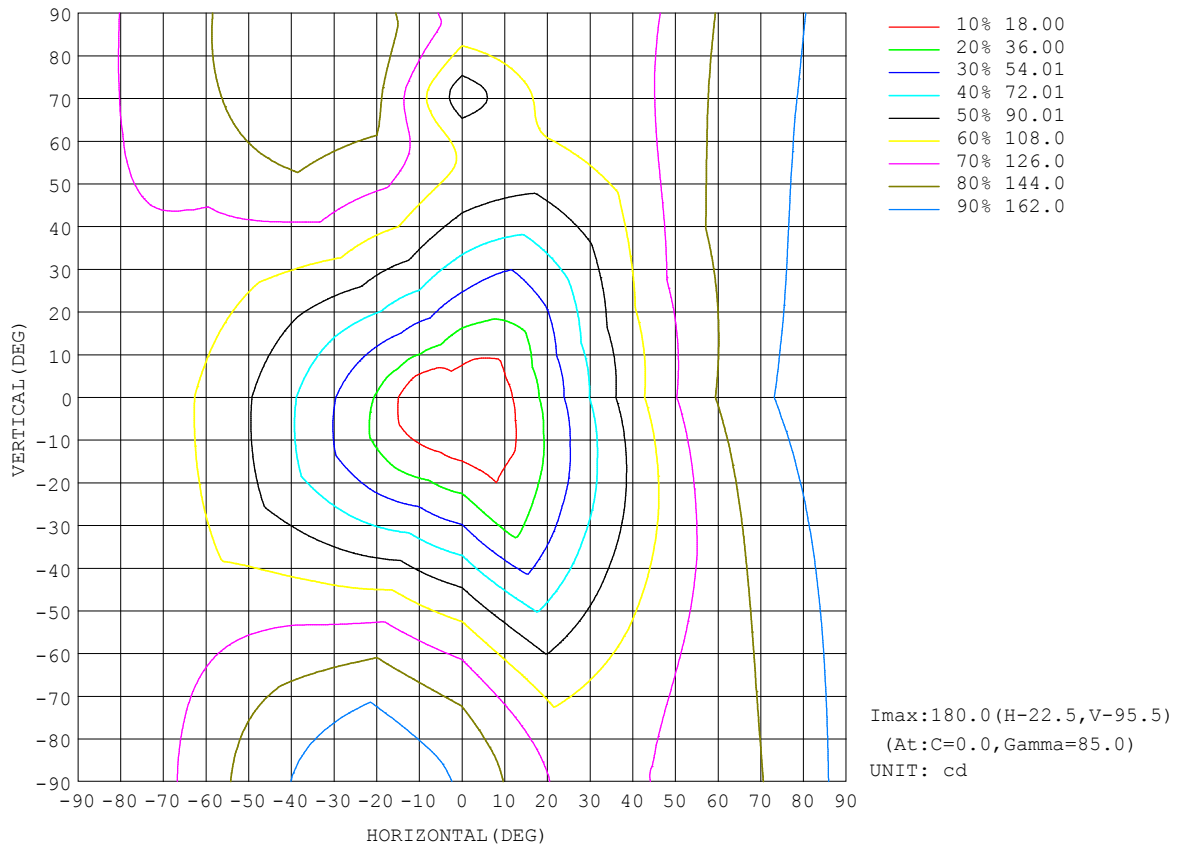
REFLECTANCE										
Ceiling	0.8	0.8	0.8	0.7	0.7	0.7	0.5	0.5	0.5	0
Walls	0.7	0.5	0.3	0.7	0.5	0.3	0.7	0.5	0.3	0
Working plane	0.2	0.2	0.2	0.2	0.2	0.2	0.2	0.2	0.2	0
ROOM INDEX	UTILIZATION FACTORS (PERCENT) $k(RI) \times RCR = 5$									
k = 0.60	33	20	13	32	19	12	28	17	11	4
0.80	42	27	18	39	26	18	34	23	16	6
1.00	49	34	24	46	32	23	40	30	20	9
1.25	56	41	31	52	38	29	44	33	25	12
1.50	61	46	36	57	43	34	48	38	30	14
2.00	69	55	45	64	51	42	54	44	37	19
2.50	74	62	51	69	57	48	58	49	42	22
3.00	79	67	57	73	62	53	61	53	46	24
4.00	84	74	65	78	68	61	65	58	52	28
5.00	88	79	71	81	73	66	68	62	56	31
ROOM INDEX	UF(total)									Direct
According to DIN EN 13032-2 2004			Suspended				SHRNOM = 1.25			

C Range: 0 - 360DEG  
 C Interval: 22.5DEG  
 Test Speed: HIGH  
 Temperature:25.2°C  
 Operators:Dano  
 Test Date:2023-05-15

$\gamma$  Range: 0 - 180DEG  
 $\gamma$  Interval: 1.0DEG  
 Test System:EVERFINE GO-R5000\_V2 SYSTEM V2.00.459  
 Humidity:55.3%  
 Test Distance:2.900m [K=0.8810]  
 Remarks:

ISOCANDELA DIAGRAM

Test:U:120.0V I:0.2006A P:23.92W PF:0.9936 Freq:60.01Hz Lamp Flux:1309.19x1 lm		
NAME: PT27-4-3x8S-952C5-MVTD-SB002 5000K	TYPE:	WEIGHT:
SPEC.:	DIM.:	SERIAL No.:
MFR.: FOSHAN LEDKEY LIGHTING CO.,LTD.	SUR.:	Shielding Angle:



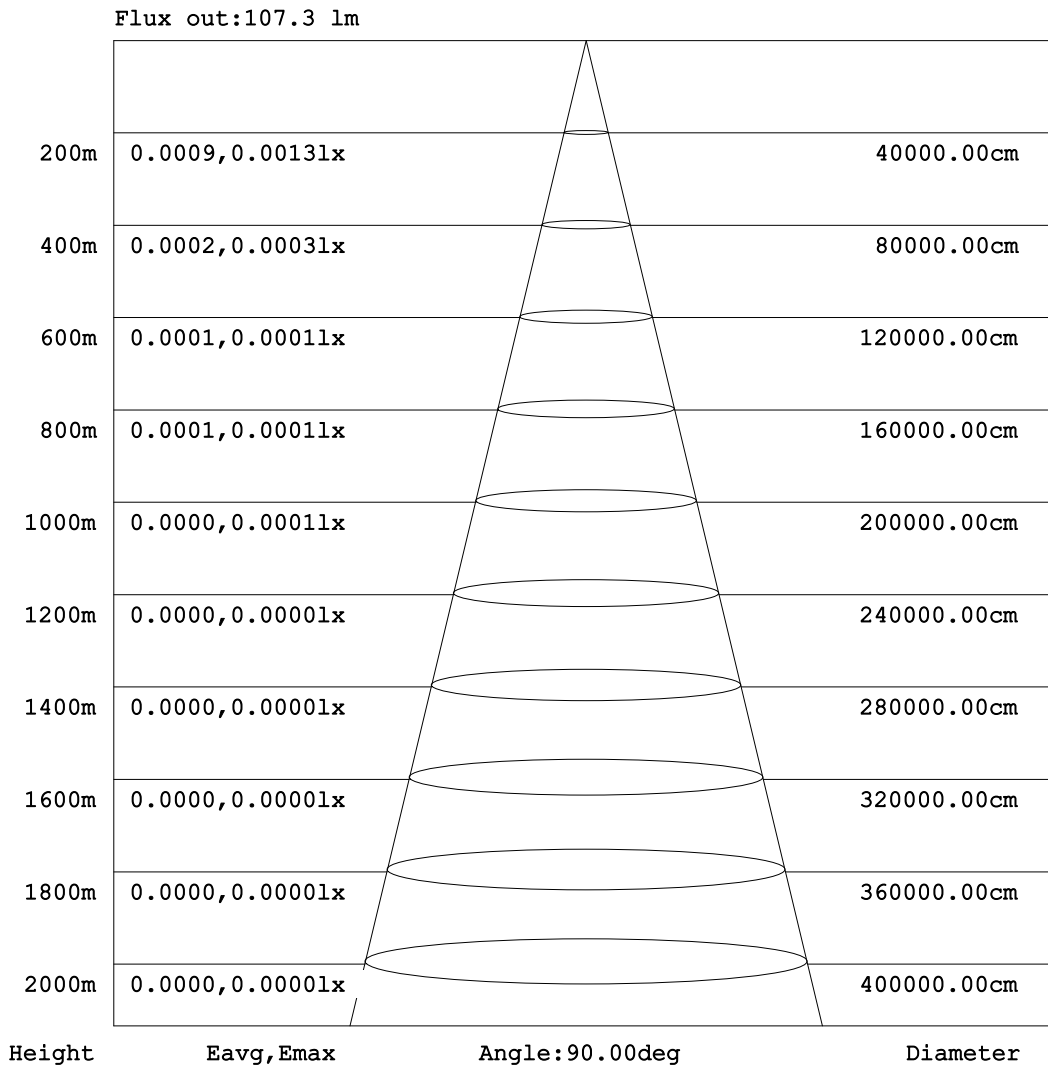
C Range: 0 - 360DEG  
C Interval: 22.5DEG  
Test Speed: HIGH  
Temperature:25.2°C  
Operators:Dano  
Test Date:2023-05-15

γ Range: 0 - 180DEG  
γ Interval: 1.0DEG  
Test System:EVERFINE GO-R5000\_V2 SYSTEM V2.00.459  
Humidity:55.3%  
Test Distance:2.900m [K=0.8810]  
Remarks:



AAI Figure

Test:U:120.0V I:0.2006A P:23.92W PF:0.9936 Freq:60.01Hz Lamp Flux:1309.19x1 lm		
NAME: PT27-4-3x8S-952C5-MVTD-SB002 5000K	TYPE:	WEIGHT:
SPEC.:	DIM.:	SERIAL No.:
MFR.: FOSHAN LEDKEY LIGHTING CO.,LTD.	SUR.:	Shielding Angle:



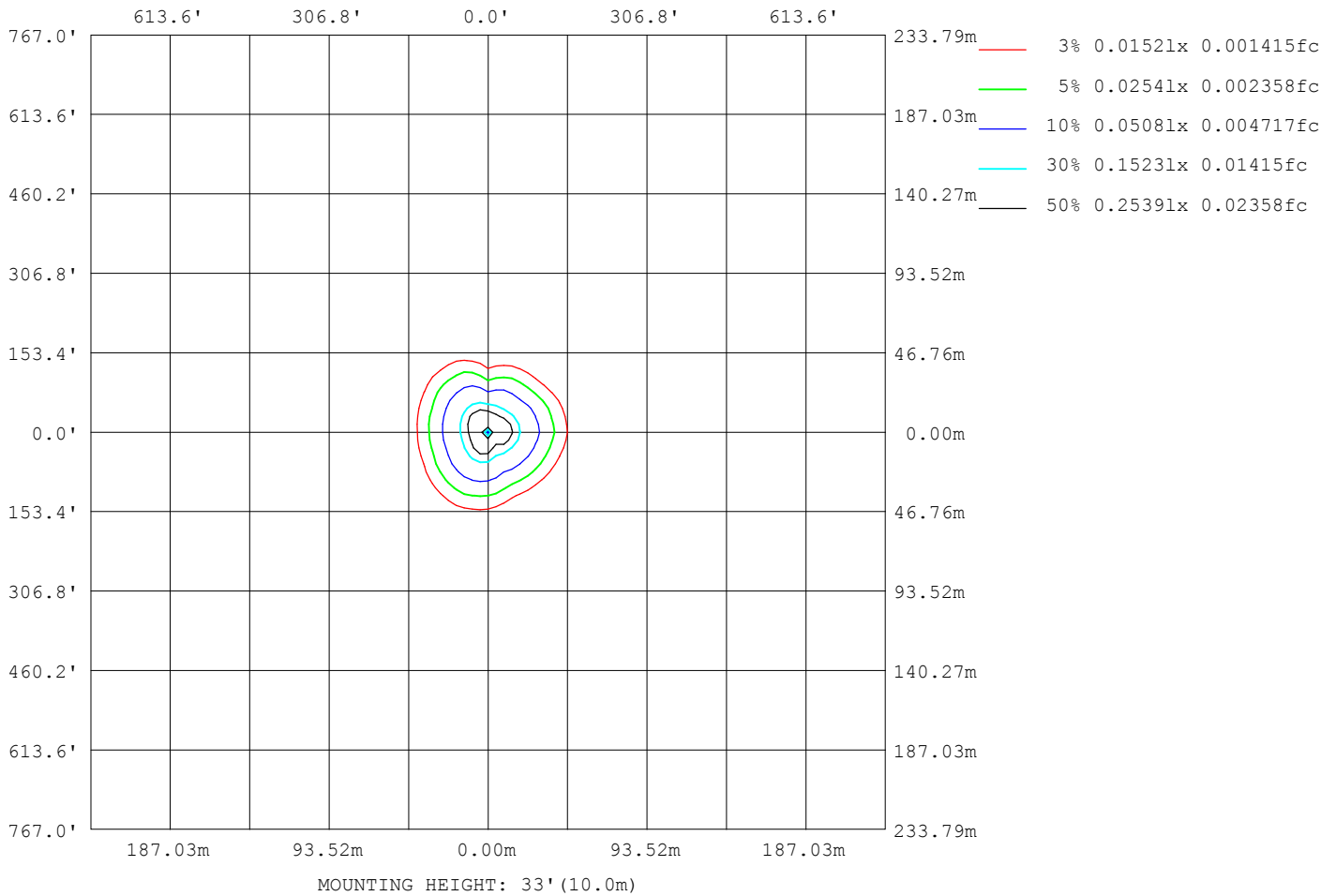
Note:The Curves indicate the illuminated area and the average illumination when the luminaire is at different distance.

C Range: 0 - 360DEG  
 C Interval: 22.5DEG  
 Test Speed: HIGH  
 Temperature:25.2℃  
 Operators:Dano  
 Test Date:2023-05-15

γ Range: 0 - 180DEG  
 γ Interval: 1.0DEG  
 Test System:EVERFINE GO-R5000\_V2 SYSTEM V2.00.459  
 Humidity:55.3%  
 Test Distance:2.900m [K=0.8810]  
 Remarks:

ISOLUX DIAGRAM

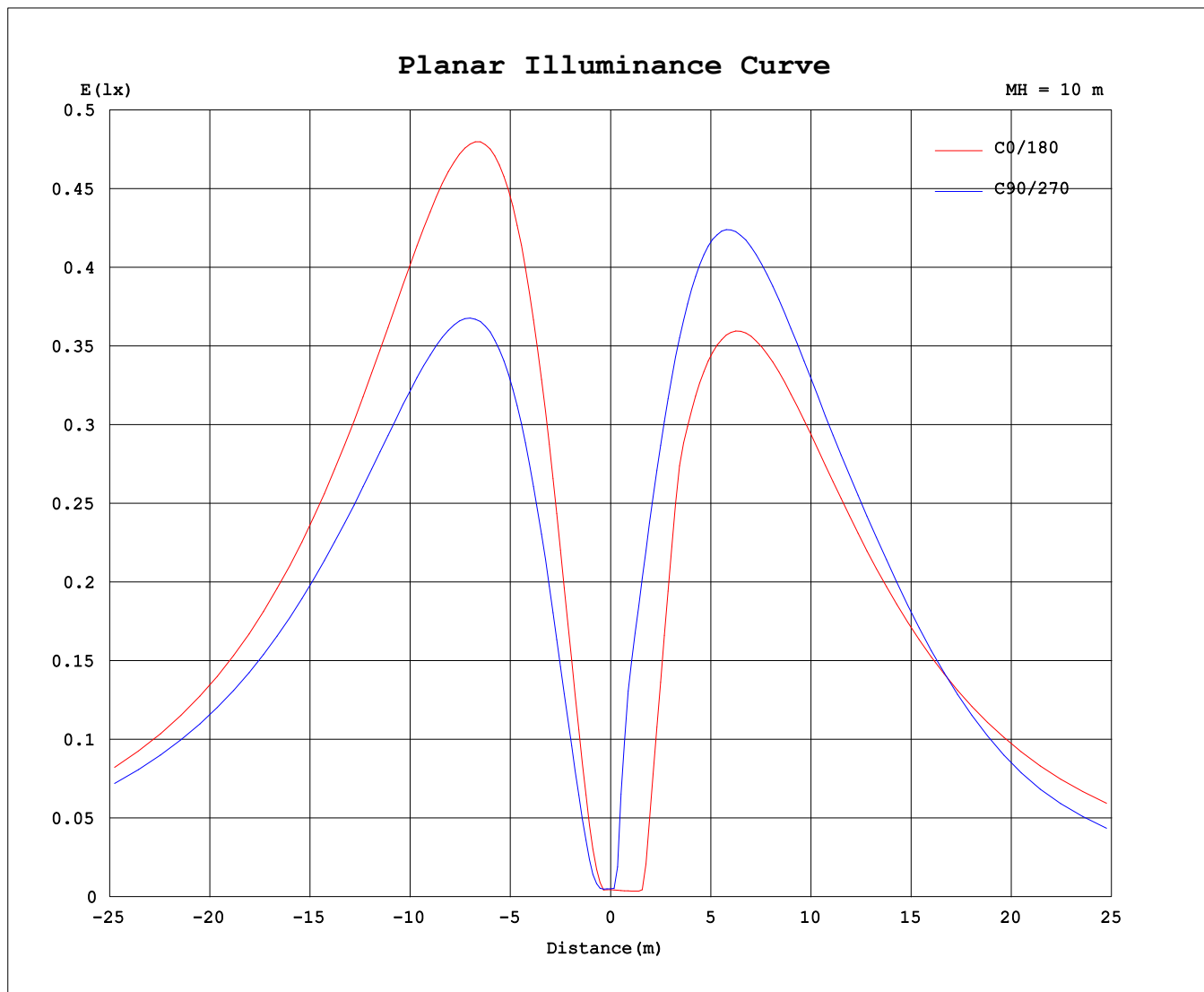
Test:U:120.0V I:0.2006A P:23.92W PF:0.9936 Freq:60.01Hz Lamp Flux:1309.19x1 lm		
NAME: PT27-4-3x8S-952C5-MVTD-SB002 5000K	TYPE:	WEIGHT:
SPEC.:	DIM.:	SERIAL No.:
MFR.: FOSHAN LEDKEY LIGHTING CO.,LTD.	SUR.:	Shielding Angle:



C Range: 0 - 360DEG  
 C Interval: 22.5DEG  
 Test Speed: HIGH  
 Temperature:25.2°C  
 Operators:Dano  
 Test Date:2023-05-15

γ Range: 0 - 180DEG  
 γ Interval: 1.0DEG  
 Test System:EVERFINE GO-R5000\_V2 SYSTEM V2.00.459  
 Humidity:55.3%  
 Test Distance:2.900m [K=0.8810]  
 Remarks:

### Planar Illuminance Curve



C Range: 0 - 360DEG  
C Interval: 22.5DEG  
Test Speed: HIGH  
Temperature: 25.2°C  
Operators: Dano  
Test Date: 2023-05-15

γ Range: 0 - 180DEG  
γ Interval: 1.0DEG  
Test System: EVERFINE GO-R5000\_V2 SYSTEM V2.00.459  
Humidity: 55.3%  
Test Distance: 2.900m [K=0.8810]  
Remarks:

LUMINOUS DISTRIBUTION INTENSITY DATA

Test:U:120.0V I:0.2006A P:23.92W PF:0.9936 Freq:60.01Hz Lamp Flux:1309.19x1 lm		
NAME: PT27-4-3x8S-952C5-MVTD-SB002 5000K	TYPE:	WEIGHT:
SPEC.:	DIM.:	SERIAL No.:
MFR.: FOSHAN LEDKEY LIGHTING CO.,LTD.	SUR.:	Shielding Angle:

Table--1

UNIT: cd

C (DEG) γ (DEG)	0	22.5	45	67.5	90	112.5	135	157.5	180	202.5	225	247.5	270	292.5	315	337.5			
0	0.49	0.49	0.49	0.49	0.49	0.49	0.49	0.49	0.49	0.49	0.49	0.49	0.49	0.49	0.49	0.49			
5	3.32	2.17	0.82	0.84	1.36	1.64	0.65	0.39	0.42	0.47	0.72	11.0	12.4	9.62	6.85	5.09			
10	14.6	11.4	5.86	4.83	7.87	9.27	8.01	4.31	2.40	10.57	23.2	27.0	21.6	17.4	13.7	14.4			
15	29.3	23.6	14.0	11.2	17.0	19.6	17.7	14.6	20.0	33.7	41.4	40.0	31.4	27.0	21.2	26.6			
20	45.5	37.5	24.3	16.3	27.8	31.7	28.4	26.8	37.7	48.2	56.1	53.1	41.4	34.4	31.8	40.1			
25	62.1	51.9	35.8	20.4	39.3	44.7	40.3	37.2	48.6	60.6	70.5	65.9	51.4	40.2	43.6	53.9			
30	78.5	66.2	47.8	26.4	51.1	57.9	52.3	46.9	59.5	72.5	84.6	78.2	61.2	47.6	55.2	67.3			
35	94.2	80.0	59.9	34.8	62.8	71.1	64.2	56.5	70.2	83.9	98.0	90.1	70.5	57.6	66.3	80.1			
40	109	93.1	71.7	45.0	74.2	83.9	75.9	66.0	80.4	94.6	111	101	79.2	67.5	76.4	92.1			
45	123	105	83.0	55.2	85.3	96.4	87.1	74.9	90.0	105	122	111	87.4	76.7	85.6	103			
50	136	116	93.5	65.3	96.0	108	97.9	83.2	98.8	114	133	121	94.7	85.1	93.8	113			
55	147	126	103	75.1	106	120	108	90.8	107	122	143	130	99.4	92.7	101	122			
60	157	135	111	84.3	116	131	117	97.7	114	129	152	137	96.5	99.1	107	130			
65	166	142	119	92.8	124	140	126	104	120	135	159	143	85.2	105	112	137			
70	172	147	125	100	132	149	134	109	124	140	165	148	75.1	109	116	142			
75	177	151	130	107	138	156	140	113	128	143	170	152	83.5	112	118	146			
80	180	154	133	113	144	162	145	116	130	145	173	154	96.4	113	120	148			
85	181	155	135	117	148	167	149	118	131	146	174	154	107	114	120	149			
90	181	154	135	120	150	169	151	119	131	145	173	153	109	113	119	148			
95	178	152	134	120	151	170	152	118	130	143	171	151	102	110	117	146			
100	174	149	131	118	148	169	152	117	127	140	167	147	94.4	107	114	142			
105	168	144	127	115	146	166	149	114	123	136	162	142	90.5	103	110	137			
110	161	138	122	113	141	162	145	110	118	130	155	136	90.1	97.4	105	131			
115	152	131	116	110	135	155	140	106	112	123	147	128	88.7	91.0	98.8	124			
120	142	123	109	106	128	147	133	99.6	104	116	136	120	85.7	84.0	91.9	116			
125	132	114	101	99.9	120	137	124	92.6	95.9	107	125	110	80.7	76.3	84.2	107			
130	120	104	92.4	92.7	111	127	115	84.7	86.5	96.9	113	100.0	74.3	68.1	75.8	97.0			
135	108	93.6	82.9	84.2	100	115	104	75.9	76.4	86.3	100.0	89.2	66.8	59.2	67.0	86.4			
140	95.9	82.8	72.7	74.5	88.6	102	92.9	66.4	65.6	74.5	86.8	77.9	58.4	50.0	57.7	74.9			
145	82.8	71.5	62.0	64.0	76.4	87.9	80.4	56.6	54.5	61.4	72.7	66.4	49.6	41.3	47.8	62.7			
150	69.5	59.9	50.9	52.9	63.5	73.4	67.3	46.3	44.0	47.5	59.4	54.1	40.7	33.4	37.7	50.0			
155	56.0	48.0	39.7	41.4	50.3	58.5	53.7	36.0	33.4	34.1	45.3	40.9	32.4	26.0	27.7	37.2			
160	42.4	36.3	28.8	30.1	36.9	43.4	39.8	26.1	20.8	21.4	30.1	27.6	23.5	18.3	18.6	25.7			
165	29.1	25.0	18.6	19.5	24.0	28.6	26.4	17.0	10.50	10.90	16.6	15.3	13.6	10.3	10.9	15.7			
170	16.9	14.6	10.15	10.2	12.3	15.2	14.1	8.96	3.03	3.14	6.28	5.74	4.85	3.40	5.38	8.26			
175	6.37	5.84	3.91	3.04	3.21	4.35	4.15	2.44	0.49	0.50	0.49	0.31	0.30	0.27	0.28	1.51			
180	0.00	0.00	0.21	0.67	0.22	0.04	0.01	0.29	0.21	0.21	0.22	0.48	0.39	0.35	0.38	0.40			

C Range: 0 - 360DEG  
 C Interval: 22.5DEG  
 Test Speed: HIGH  
 Temperature:25.2℃  
 Operators:Dano  
 Test Date:2023-05-15

γ Range: 0 - 180DEG  
 γ Interval: 1.0DEG  
 Test System:EVERFINE GO-R5000\_V2 SYSTEM V2.00.459  
 Humidity:55.3%  
 Test Distance:2.900m [K=0.8810]  
 Remarks: