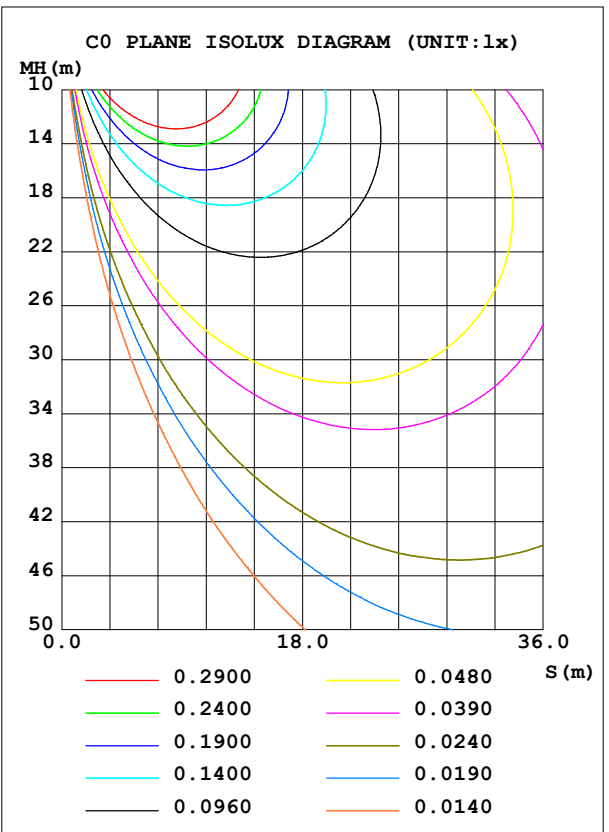
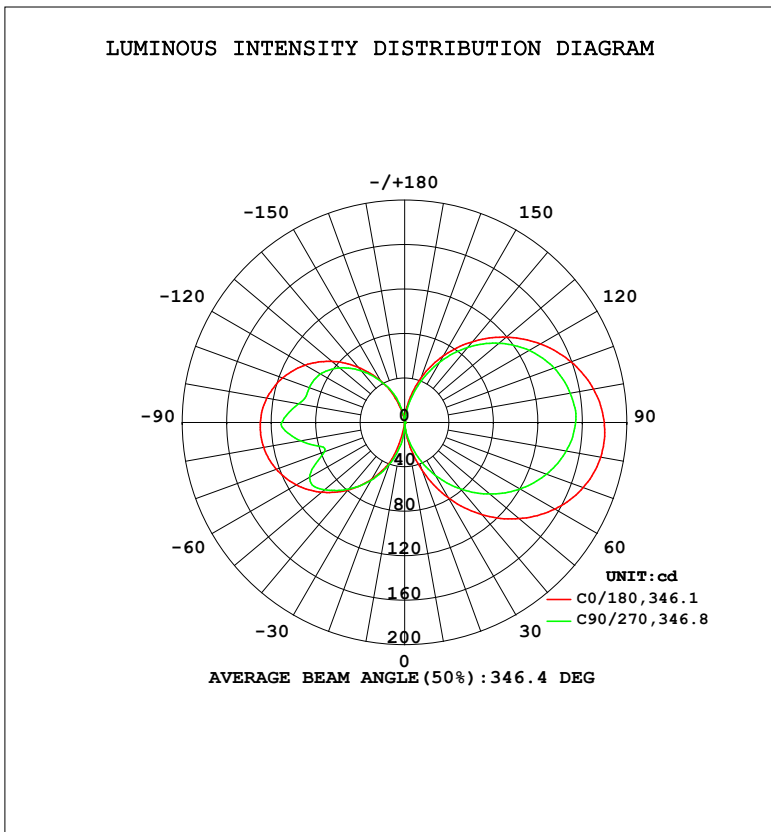


LUMINAIRE PHOTOMETRIC TEST REPORT

Test:U:120.0V I:0.2020A P:24.09W PF:0.9937 Freq:60.01Hz Lamp Flux:1314.2lx1 lm		
NAME: PT27-4-3x8S-952C5-MVTD-SB002 4000K	TYPE:	WEIGHT:
SPEC.:	DIM.:	SERIAL No.:
MFR.: FOSHAN LEDKEY LIGHTING CO.,LTD.	SUR.:	Shielding Angle:

DATA OF LAMP		PHOTOMETRIC DATA				Eff: 54.56 lm/W
MODEL		I _{max} (cd)	180.3	S/MH (C0/180)		14.42
NOMINAL POWER (W)		LOR (%)	100.0	S/MH (C90/270)		13.45
RATED VOLTAGE (V)	120	TOTAL FLUX (lm)	1314.2	η UP, DN (C0-180)		26.3, 25.6
NOMINAL FLUX (lm)	1314.21	CIE CLASS	DIFFUSE	η UP, DN (C180-360)		22.8, 25.3
LAMPS INSIDE	1	η up (%)	49.1	CIBSE SHR NOM		1.25
TEST VOLTAGE (V)	120	η down (%)	50.9	CIBSE SHR MAX		1.35



C Range: 0 - 360DEG
 C Interval: 22.5DEG
 Test Speed: HIGH
 Temperature: 25.2 °C
 Operators: Dano
 Test Date: 2023-05-15

γ Range: 0 - 180DEG
 γ Interval: 1.0DEG
 Test System: EVERFINE GO-R5000_V2 SYSTEM V2.00.459
 Humidity: 55.3%
 Test Distance: 2.900m [K=0.8810]
 Remarks:

ZONAL FLUX DIAGRAM

ZONAL FLUX DIAGRAM:

γ	C0	C45	C90	C135	C180	C225	C270	C315	γ	Φ zone	Φ total	%lum,lamp
10	14.48	5.823	9.733	9.878	2.400	23.03	19.88	11.70	0- 10	0.5965	0.5965	0.05,0.05
20	45.15	24.11	30.71	31.17	37.10	55.05	39.75	29.68	10- 20	7.198	7.794	0.59,0.59
30	78.03	47.42	54.59	55.46	58.75	83.02	59.91	53.43	20- 30	22.39	30.18	2.3,2.3
40	108.4	71.13	78.10	79.25	79.37	108.7	78.35	75.03	30- 40	44.86	75.04	5.71,5.71
50	134.6	92.63	100.2	101.4	97.65	131.1	94.30	92.92	40- 50	72.16	147.2	11.2,11.2
60	156.0	110.5	119.9	120.9	112.5	149.4	98.74	106.8	50- 60	100.4	247.6	18.8,18.8
70	171.1	123.7	136.0	137.0	123.0	162.7	76.79	116.1	60- 70	124.5	372.1	28.3,28.3
80	179.2	131.7	147.7	148.3	128.8	169.8	95.24	120.8	70- 80	142.8	514.9	39.2,39.2
90	179.6	134.2	153.8	154.1	129.9	170.4	110.6	120.7	80- 90	154.1	669.0	50.9,50.9
100	172.6	130.3	151.3	153.3	126.0	164.5	97.16	116.1	90-100	153.1	822.1	62.6,62.6
110	159.5	121.2	143.3	146.2	117.0	152.4	91.35	107.2	100-110	141.0	963.0	73.3,73.3
120	141.3	107.9	129.7	133.0	103.3	134.1	87.48	94.28	110-120	121.4	1084	82.5,82.5
130	119.5	91.47	111.0	114.6	85.68	110.9	76.42	78.32	120-130	95.78	1180	89.8,89.8
140	94.97	71.97	88.15	91.77	64.91	85.29	60.74	60.27	130-140	67.69	1248	95,95
150	68.84	50.36	62.28	65.52	43.34	58.39	42.85	40.07	140-150	40.99	1289	98.1,98.1
160	41.92	28.45	35.05	37.60	20.84	29.58	25.69	20.54	150-160	19.40	1308	99.5,99.5
170	16.67	9.978	10.55	12.15	3.023	6.228	6.509	6.131	160-170	5.541	1314	100,100
180	0	0	0.2891	0.4064	0.2053	0.2133	0.2531	0.3582	170-180	0.4203	1314	100,100
DEG	LUMINOUS INTENSITY:cd									UNIT:lm		

Conical surface Flux(90deg): 107.55 lm

%lum = 8.2%

%lamp = 8.2%

Conical surface Flux(120deg): 247.58 lm

%lum = 18.8%

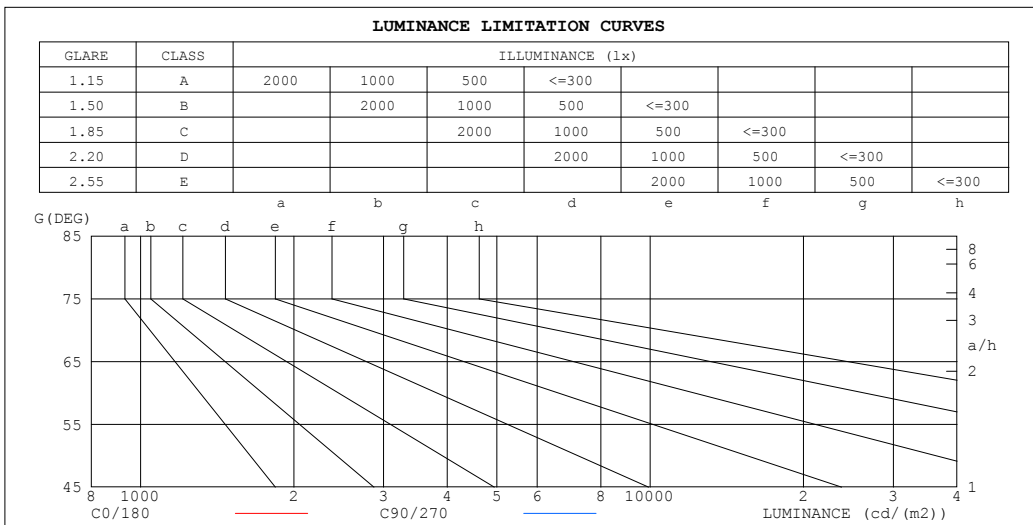
%lamp = 18.8%

C Range: 0 - 360DEG
C Interval: 22.5DEG
Test Speed: HIGH
Temperature:25.2℃
Operators:Dano
Test Date:2023-05-15

γ Range: 0 - 180DEG
 γ Interval: 1.0DEG
Test System:EVERFINE GO-R5000_V2 SYSTEM V2.00.459
Humidity:55.3%
Test Distance:2.900m [K=0.8810]
Remarks:

LUMINANCE LIMITATION CURVES

Test:U:120.0V I:0.2020A P:24.09W PF:0.9937 Freq:60.01Hz Lamp Flux:1314.2lx1 lm		
NAME: PT27-4-3x8S-952C5-MVTD-SB002 4000K	TYPE:	WEIGHT:
SPEC.:	DIM.:	SERIAL No.:
MFR.: FOSHAN LEDKEY LIGHTING CO.,LTD.	SUR.:	Shielding Angle:



LUMINANCE cd/(m2)		
G (DEG)	C0/180	C90/270
85	1537221	1457035
80	766967	712097
75	505462	460767
70	371772	332858
65	289143	254338
60	231825	200685
55	189229	161225
50	155638	130553
45	128322	105884

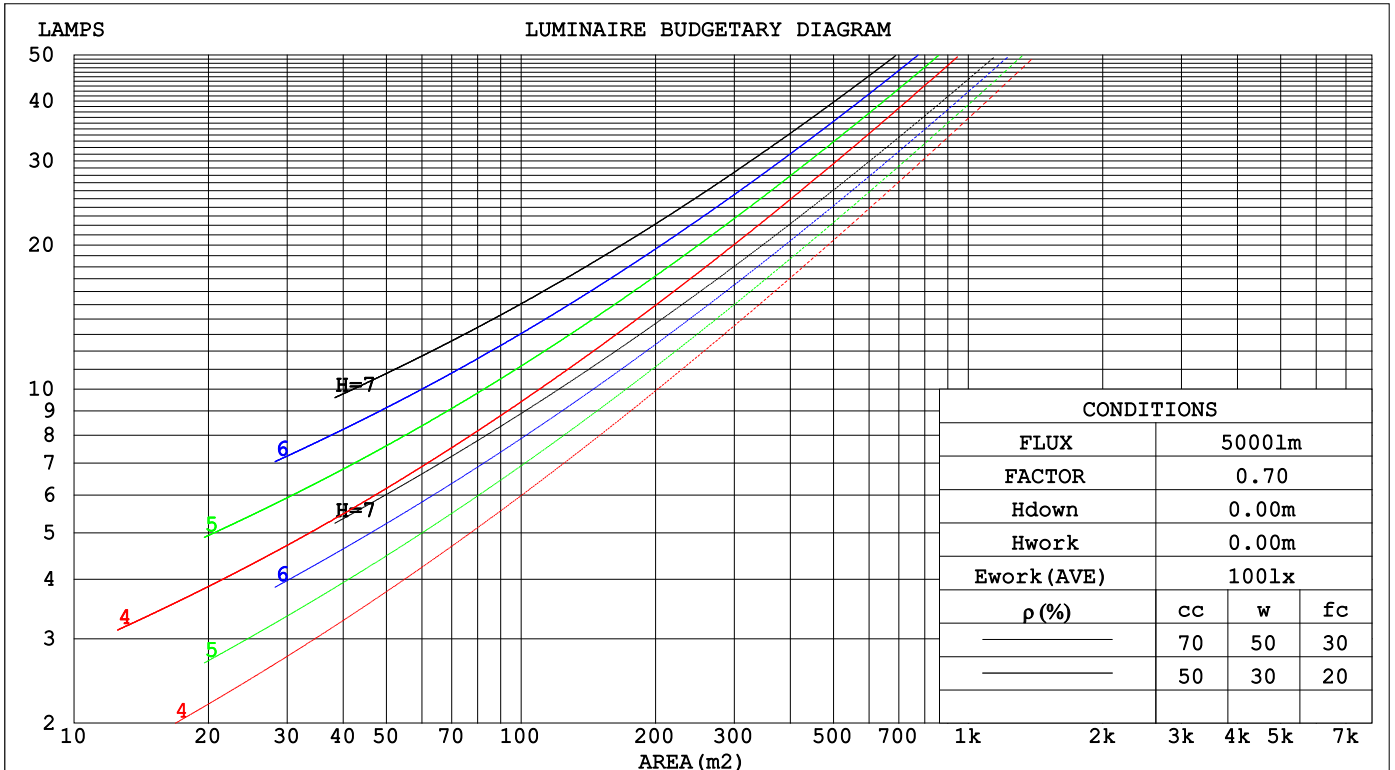
C Range: 0 - 360DEG
 C Interval: 22.5DEG
 Test Speed: HIGH
 Temperature:25.2℃
 Operators:Dano
 Test Date:2023-05-15

γ Range: 0 - 180DEG
 γ Interval: 1.0DEG
 Test System:EVERFINE GO-R5000_V2 SYSTEM V2.00.459
 Humidity:55.3%
 Test Distance:2.900m [K=0.8810]
 Remarks:

CU AND LUMINAIRE BUDGETARY ESTIMATE DIAGRAM

Test:U:120.0V I:0.2020A P:24.09W PF:0.9937 Freq:60.01Hz Lamp Flux:1314.2lx1 lm		
NAME: PT27-4-3x8S-952C5-MVTD-SB002 4000K	TYPE:	WEIGHT:
SPEC.:	DIM.:	SERIAL No.:
MFR.: FOSHAN LEDKEY LIGHTING CO.,LTD.	SUR.:	Shielding Angle:

ρcc	80%			70%			50%			30%			10%			0
ρw	50%	30%	10%	50%	30%	10%	50%	30%	10%	50%	30%	10%	50%	30%	10%	0
ρfc	20%			20%			20%			20%			20%			0
RCR	RCR:Room Cavity Ratio						Coefficients of Utilization(CU)									
0.0	1.07	1.07	1.07	.99	.99	.99	.84	.84	.84	.70	.70	.70	.57	.57	.57	.51
1.0	.85	.79	.73	.78	.72	.67	.64	.60	.56	.52	.49	.46	.41	.38	.36	.30
2.0	.71	.62	.55	.65	.57	.51	.53	.47	.42	.42	.38	.34	.32	.29	.26	.21
3.0	.60	.51	.43	.55	.46	.40	.45	.38	.33	.36	.30	.26	.27	.23	.19	.15
4.0	.52	.42	.35	.48	.39	.32	.39	.32	.26	.31	.25	.21	.23	.19	.15	.11
5.0	.46	.36	.29	.42	.33	.26	.34	.27	.21	.27	.21	.17	.20	.16	.12	.09
6.0	.40	.31	.24	.37	.28	.22	.30	.23	.18	.24	.18	.14	.18	.13	.10	.07
7.0	.36	.27	.20	.33	.25	.19	.27	.20	.15	.21	.16	.12	.16	.12	.08	.06
8.0	.32	.24	.17	.30	.22	.16	.24	.18	.13	.19	.14	.10	.14	.10	.07	.05
9.0	.29	.21	.15	.27	.19	.14	.22	.16	.11	.17	.12	.09	.13	.09	.06	.04
10.0	.27	.19	.13	.24	.17	.12	.20	.14	.10	.16	.11	.08	.12	.08	.05	.03



C Range: 0 - 360DEG
 C Interval: 22.5DEG
 Test Speed: HIGH
 Temperature:25.2°C
 Operators:Dano
 Test Date:2023-05-15

γ Range: 0 - 180DEG
 γ Interval: 1.0DEG
 Test System:EVERFINE GO-R5000_V2 SYSTEM V2.00.459
 Humidity:55.3%
 Test Distance:2.900m [K=0.8810]
 Remarks:

WEC AND CCEC

Test:U:120.0V I:0.2020A P:24.09W PF:0.9937 Freq:60.01Hz Lamp Flux:1314.21x1 lm		
NAME: PT27-4-3x8S-952C5-MVTD-SB002 4000K	TYPE:	WEIGHT:
SPEC.:	DIM.:	SERIAL No.:
MFR.: FOSHAN LEDKEY LIGHTING CO.,LTD.	SUR.:	Shielding Angle:

ρcc	80%			70%			50%			30%			10%			0
ρw	50%	30%	10%	50%	30%	10%	50%	30%	10%	50%	30%	10%	50%	30%	10%	0
ρfc	20%			20%			20%			20%			20%			0
RCR	RCR:Room Cavity Ratio						Wall Exitance Coefficients(WEC)									
0.0																
1.0	.445	.253	.080	.423	.241	.077	.381	.219	.070	.343	.198	.063	.308	.178	.057	
2.0	.365	.200	.061	.345	.190	.059	.307	.171	.053	.272	.152	.048	.239	.135	.043	
3.0	.315	.168	.050	.297	.159	.048	.262	.142	.043	.229	.126	.039	.199	.110	.034	
4.0	.278	.145	.043	.262	.137	.040	.229	.122	.036	.200	.107	.032	.172	.093	.028	
5.0	.250	.127	.037	.234	.120	.035	.205	.107	.031	.177	.094	.028	.152	.081	.024	
6.0	.227	.114	.033	.212	.107	.031	.185	.095	.028	.160	.083	.024	.136	.072	.021	
7.0	.207	.103	.029	.194	.097	.028	.169	.085	.025	.145	.075	.022	.123	.064	.019	
8.0	.191	.093	.026	.179	.088	.025	.156	.078	.022	.134	.068	.020	.113	.058	.017	
9.0	.177	.086	.024	.166	.081	.023	.144	.071	.020	.124	.062	.018	.104	.053	.015	
10.0	.165	.079	.022	.155	.075	.021	.134	.066	.019	.115	.057	.016	.097	.049	.014	

ρcc	80%			70%			50%			30%			10%			0
ρw	50%	30%	10%	50%	30%	10%	50%	30%	10%	50%	30%	10%	50%	30%	10%	0
ρfc	20%			20%			20%			20%			20%			0
RCR	RCR:Room Cavity Ratio						Ceiling Cavity Exitance Coefficients(CCEC)									
0.0	.565	.565	.565	.482	.482	.482	.329	.329	.329	.189	.189	.189	.060	.060	.060	
1.0	.567	.532	.501	.485	.457	.431	.332	.314	.298	.191	.182	.173	.061	.059	.056	
2.0	.562	.511	.469	.481	.440	.405	.330	.304	.283	.190	.177	.166	.061	.057	.054	
3.0	.555	.496	.450	.476	.428	.390	.327	.297	.273	.189	.174	.161	.061	.056	.053	
4.0	.547	.485	.437	.470	.419	.380	.323	.292	.268	.187	.171	.158	.060	.056	.052	
5.0	.540	.476	.429	.464	.412	.373	.319	.288	.264	.185	.169	.156	.060	.055	.052	
6.0	.533	.469	.423	.458	.406	.369	.316	.284	.261	.183	.167	.155	.059	.055	.051	
7.0	.526	.463	.419	.452	.401	.365	.312	.281	.259	.181	.166	.154	.059	.054	.051	
8.0	.519	.458	.416	.447	.397	.362	.309	.279	.257	.180	.164	.153	.058	.054	.051	
9.0	.513	.453	.413	.442	.393	.360	.306	.276	.256	.178	.163	.153	.058	.054	.051	
10.0	.507	.449	.411	.437	.390	.359	.303	.275	.255	.177	.162	.152	.057	.053	.050	

C Range: 0 - 360DEG
 C Interval: 22.5DEG
 Test Speed: HIGH
 Temperature:25.2℃
 Operators:Dano
 Test Date:2023-05-15

γ Range: 0 - 180DEG
 γ Interval: 1.0DEG
 Test System:EVERFINE GO-R5000_V2 SYSTEM V2.00.459
 Humidity:55.3%
 Test Distance:2.900m [K=0.8810]
 Remarks:

UGR(Unified Glare Rating) Table

Test:U:120.0V I:0.2020A P:24.09W PF:0.9937 Freq:60.01Hz										
Lamp Flux:1314.2lx1 lm										
NAME: PT27-4-3x8S-952C5-MVTD-SB002 4000K					TYPE:			WEIGHT:		
SPEC.:					DIM.:			SERIAL No.:		
MFR.: FOSHAN LEDKEY LIGHTING CO.,LTD.					SUR.:			Shielding Angle:		
ceiling/cavity	0.7	0.7	0.5	0.5	0.3	0.7	0.7	0.5	0.5	0.3
walls	0.5	0.3	0.5	0.3	0.3	0.5	0.3	0.5	0.3	0.3
working plane	0.2	0.2	0.2	0.2	0.2	0.2	0.2	0.2	0.2	0.2
Room dimensions	Viewed crosswise					Viewed endwise				
x = 2H y = 2H	24.6	26.8	26.4	28.7	31.1	25.3	27.5	27.0	29.3	31.7
3H	28.6	30.6	30.4	32.5	34.9	29.0	31.1	30.8	32.9	35.4
4H	30.6	32.6	32.5	34.5	36.9	31.0	32.9	32.8	34.8	37.3
6H	32.9	34.7	34.7	36.6	39.1	33.1	34.9	34.9	36.8	39.3
8H	34.1	35.8	35.9	37.7	40.3	34.2	36.0	36.1	37.9	40.4
12H	35.4	37.1	37.3	39.0	41.6	35.5	37.2	37.4	39.1	41.7
4H 2H	24.9	26.8	26.8	28.7	31.2	25.8	27.7	27.6	29.6	32.1
3H	29.0	30.7	30.9	32.7	35.2	29.8	31.5	31.7	33.5	36.0
4H	31.2	32.8	33.1	34.8	37.3	32.0	33.6	33.9	35.5	38.1
6H	33.7	35.1	35.6	37.1	39.6	34.3	35.7	36.2	37.7	40.3
8H	35.0	36.3	36.9	38.3	40.9	35.5	36.9	37.5	38.9	41.5
12H	36.5	37.7	38.5	39.7	42.4	36.9	38.2	38.9	40.2	42.8
8H 4H	31.6	32.9	33.5	34.9	37.5	32.5	33.8	34.4	35.8	38.4
6H	34.2	35.4	36.2	37.4	40.1	35.1	36.3	37.1	38.3	41.0
8H	35.7	36.8	37.7	38.8	41.5	36.6	37.6	38.6	39.7	42.4
12H	37.5	38.4	39.5	40.5	43.2	38.3	39.2	40.3	41.3	44.0
12H 4H	31.7	32.9	33.6	34.9	37.5	32.5	33.8	34.5	35.8	38.4
6H	34.4	35.4	36.4	37.5	40.2	35.3	36.4	37.3	38.4	41.1
8H	36.0	36.9	38.0	39.0	41.7	37.0	37.9	39.0	39.9	42.7
CIE190: 2010										

CIE190: 2010
Area: 0.001257 m2

C Range: 0 - 360DEG
C Interval: 22.5DEG
Test Speed: HIGH
Temperature:25.2℃
Operators:Dano
Test Date:2023-05-15

γ Range: 0 - 180DEG
γ Interval: 1.0DEG
Test System:EVERFINE GO-R5000_V2 SYSTEM V2.00.459
Humidity:55.3%
Test Distance:2.900m [K=0.8810]
Remarks:

UTILIZATION FACTORS TABLE

Test:U:120.0V I:0.2020A P:24.09W PF:0.9937 Freq:60.01Hz Lamp Flux:1314.21x1 lm		
NAME: PT27-4-3x8S-952C5-MVTD-SB002 4000K	TYPE:	WEIGHT:
SPEC.:	DIM.:	SERIAL No.:
MFR.: FOSHAN LEDKEY LIGHTING CO.,LTD.	SUR.:	Shielding Angle:

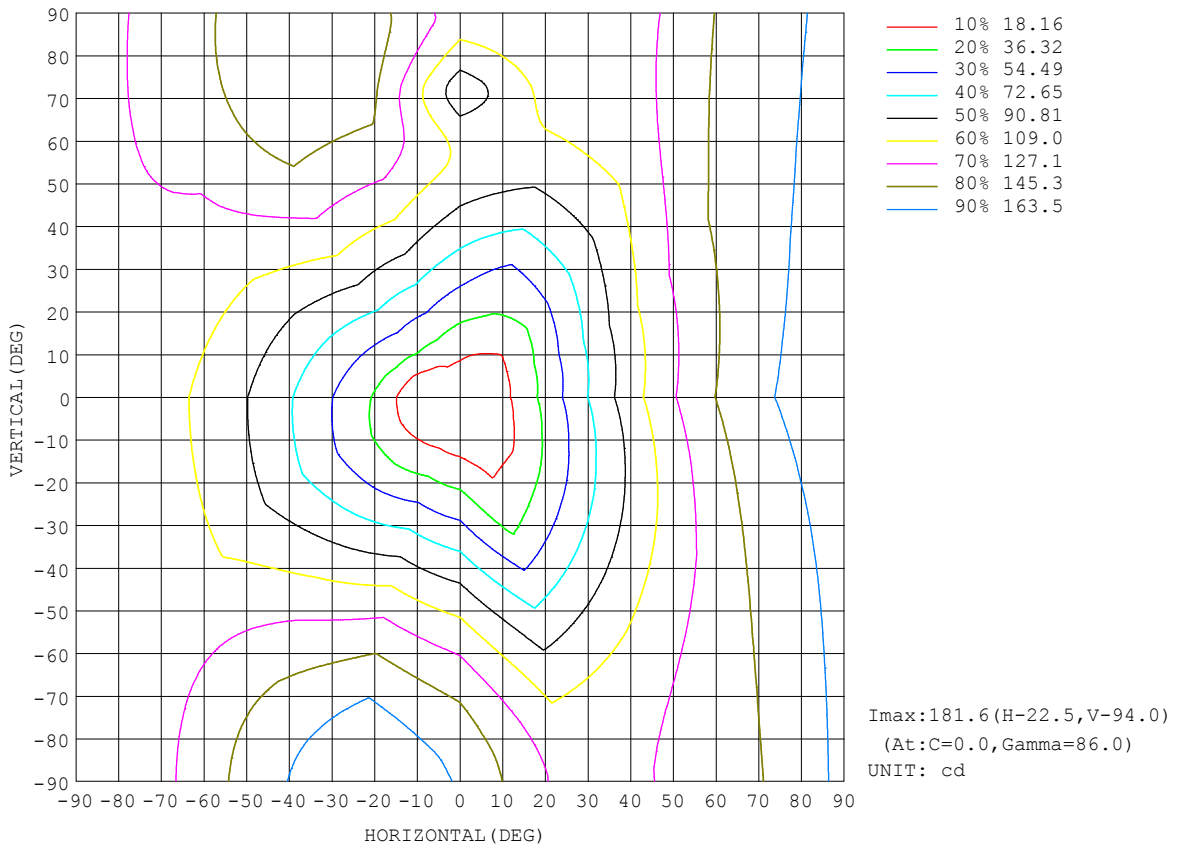
REFLECTANCE										
Ceiling	0.8	0.8	0.8	0.7	0.7	0.7	0.5	0.5	0.5	0
Walls	0.7	0.5	0.3	0.7	0.5	0.3	0.7	0.5	0.3	0
Working plane	0.2	0.2	0.2	0.2	0.2	0.2	0.2	0.2	0.2	0
ROOM INDEX	UTILIZATION FACTORS (PERCENT) $k(RI) \times RCR = 5$									
k = 0.60	33	20	13	32	19	12	28	17	11	4
0.80	42	27	18	39	26	18	34	23	16	6
1.00	49	34	24	46	32	23	40	30	20	9
1.25	56	41	31	52	38	29	44	33	25	12
1.50	61	46	36	57	43	34	48	38	30	14
2.00	69	55	45	64	51	42	54	44	37	19
2.50	74	62	51	69	57	48	58	49	42	22
3.00	79	67	57	73	62	53	61	53	46	24
4.00	84	74	65	78	68	61	65	58	52	28
5.00	88	79	71	81	73	66	68	62	56	31
ROOM INDEX	UF(total)									Direct
According to DIN EN 13032-2 2004			Suspended				SHRNOM = 1.25			

C Range: 0 - 360DEG
 C Interval: 22.5DEG
 Test Speed: HIGH
 Temperature:25.2°C
 Operators:Dano
 Test Date:2023-05-15

γ Range: 0 - 180DEG
 γ Interval: 1.0DEG
 Test System:EVERFINE GO-R5000_V2 SYSTEM V2.00.459
 Humidity:55.3%
 Test Distance:2.900m [K=0.8810]
 Remarks:

ISOCANDELA DIAGRAM

Test:U:120.0V I:0.2020A P:24.09W PF:0.9937 Freq:60.01Hz Lamp Flux:1314.21x1 lm		
NAME: PT27-4-3x8S-952C5-MVTD-SB002 4000K	TYPE:	WEIGHT:
SPEC.:	DIM.:	SERIAL No.:
MFR.: FOSHAN LEDKEY LIGHTING CO.,LTD.	SUR.:	Shielding Angle:

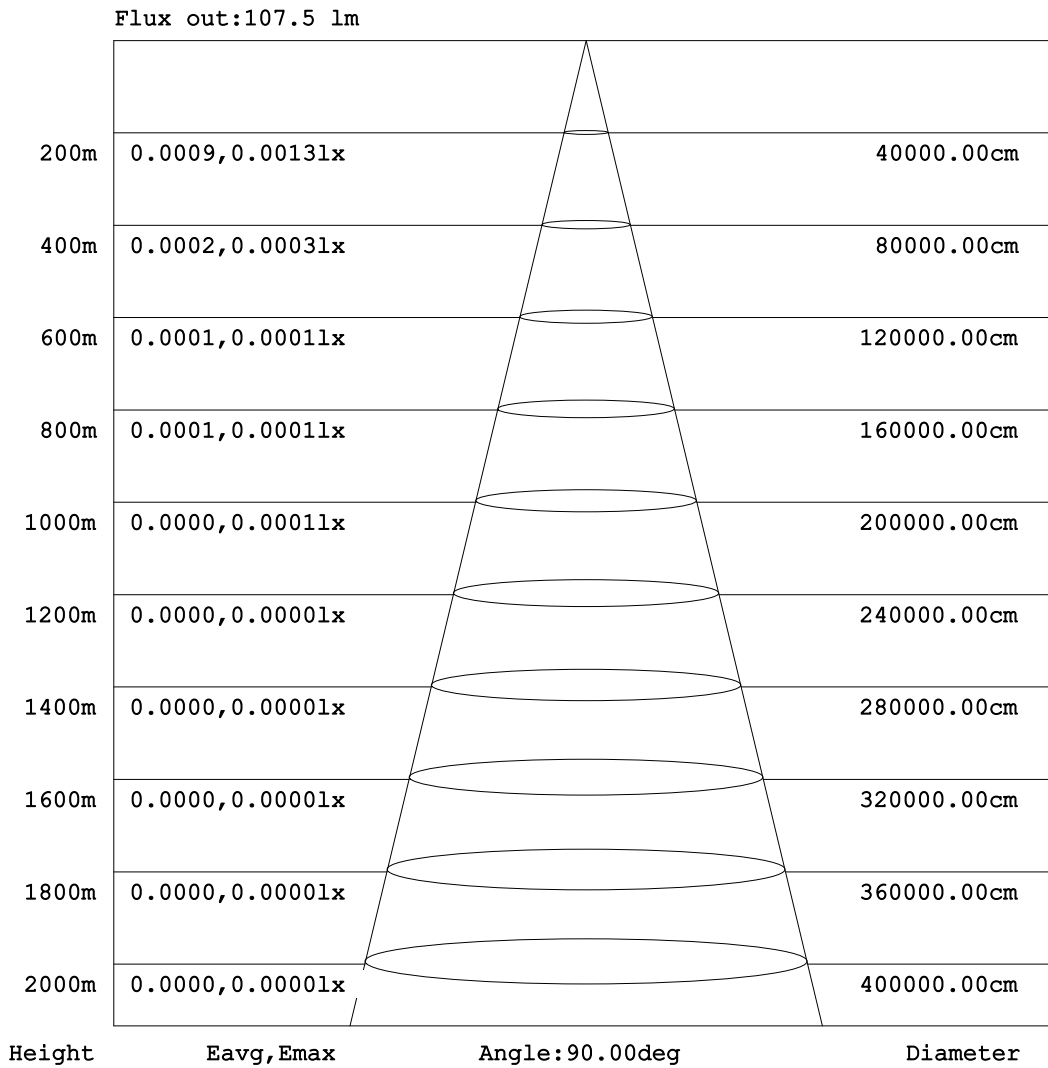


C Range: 0 - 360DEG
C Interval: 22.5DEG
Test Speed: HIGH
Temperature:25.2°C
Operators:Dano
Test Date:2023-05-15

γ Range: 0 - 180DEG
γ Interval: 1.0DEG
Test System:EVERFINE GO-R5000_V2 SYSTEM V2.00.459
Humidity:55.3%
Test Distance:2.900m [K=0.8810]
Remarks:

AAI Figure

Test:U:120.0V I:0.2020A P:24.09W PF:0.9937 Freq:60.01Hz Lamp Flux:1314.21x1 lm		
NAME: PT27-4-3x8S-952C5-MVTD-SB002 4000K	TYPE:	WEIGHT:
SPEC.:	DIM.:	SERIAL No.:
MFR.: FOSHAN LEDKEY LIGHTING CO.,LTD.	SUR.:	Shielding Angle:



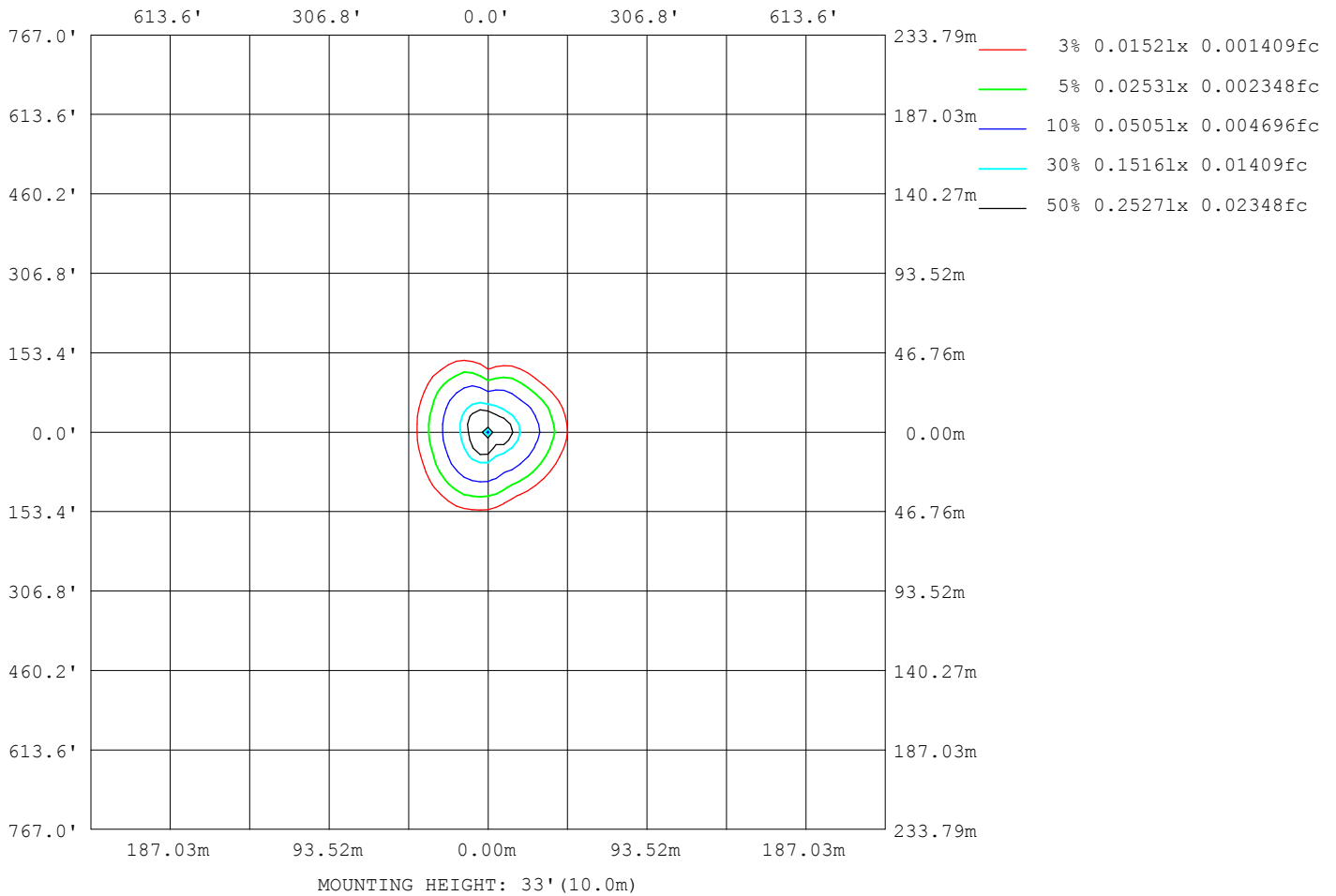
Note:The Curves indicate the illuminated area and the average illumination when the luminaire is at different distance.

C Range: 0 - 360DEG
 C Interval: 22.5DEG
 Test Speed: HIGH
 Temperature:25.2℃
 Operators:Dano
 Test Date:2023-05-15

γ Range: 0 - 180DEG
 γ Interval: 1.0DEG
 Test System:EVERFINE GO-R5000_V2 SYSTEM V2.00.459
 Humidity:55.3%
 Test Distance:2.900m [K=0.8810]
 Remarks:

ISOLUX DIAGRAM

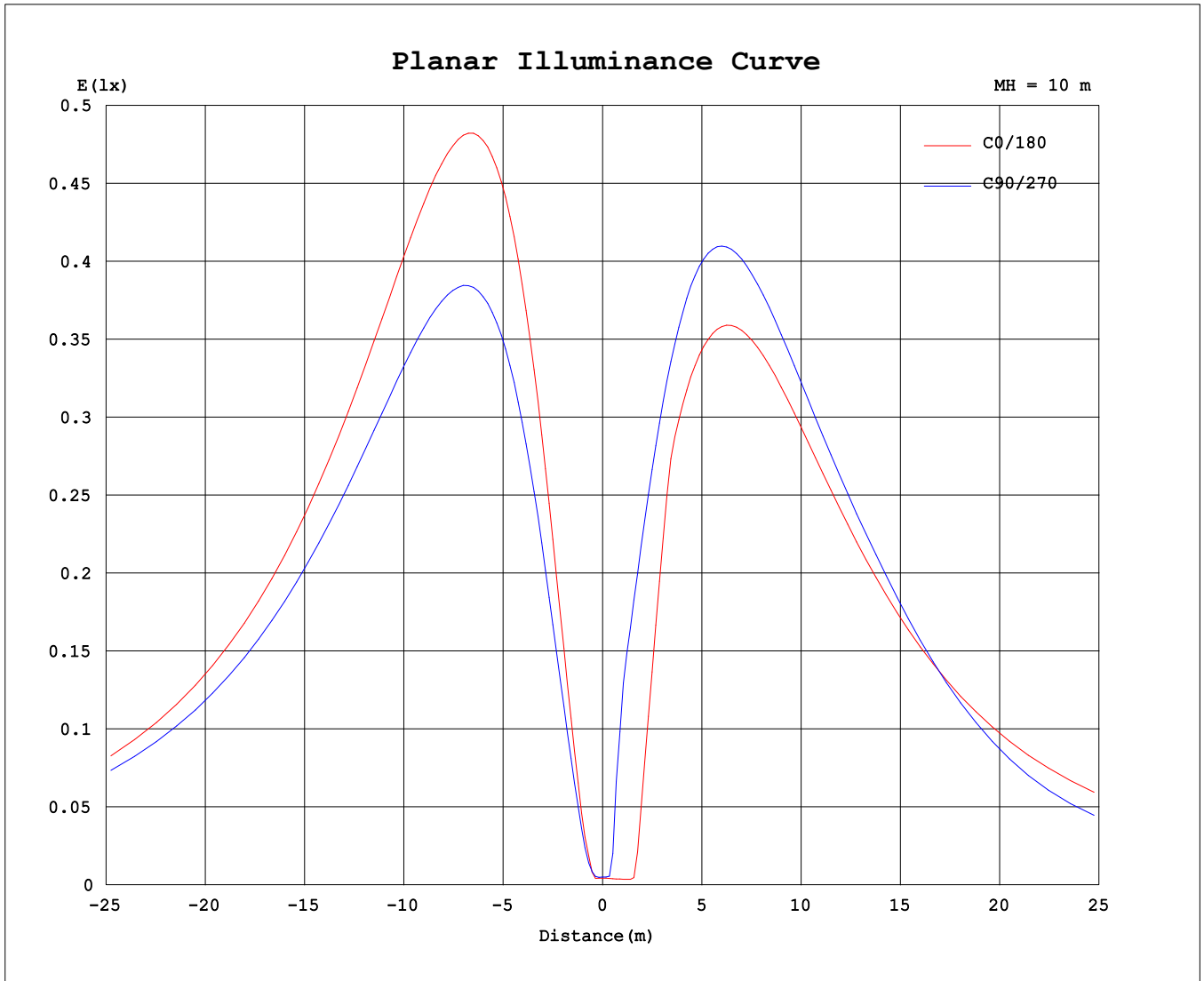
Test:U:120.0V I:0.2020A P:24.09W PF:0.9937 Freq:60.01Hz Lamp Flux:1314.2lx1 lm		
NAME: PT27-4-3x8S-952C5-MVTD-SB002 4000K	TYPE:	WEIGHT:
SPEC.:	DIM.:	SERIAL No.:
MFR.: FOSHAN LEDKEY LIGHTING CO.,LTD.	SUR.:	Shielding Angle:



C Range: 0 - 360DEG
 C Interval: 22.5DEG
 Test Speed: HIGH
 Temperature:25.2°C
 Operators:Dano
 Test Date:2023-05-15

γ Range: 0 - 180DEG
 γ Interval: 1.0DEG
 Test System:EVERFINE GO-R5000_V2 SYSTEM V2.00.459
 Humidity:55.3%
 Test Distance:2.900m [K=0.8810]
 Remarks:

Planar Illuminance Curve



C Range: 0 - 360DEG
C Interval: 22.5DEG
Test Speed: HIGH
Temperature: 25.2°C
Operators: Dano
Test Date: 2023-05-15

γ Range: 0 - 180DEG
γ Interval: 1.0DEG
Test System: EVERFINE GO-R5000_V2 SYSTEM V2.00.459
Humidity: 55.3%
Test Distance: 2.900m [K=0.8810]
Remarks:

LUMINOUS DISTRIBUTION INTENSITY DATA

Test:U:120.0V I:0.2020A P:24.09W PF:0.9937 Freq:60.01Hz Lamp Flux:1314.2lx1 lm		
NAME: PT27-4-3x8S-952C5-MVTD-SB002 4000K	TYPE:	WEIGHT:
SPEC.:	DIM.:	SERIAL No.:
MFR.: FOSHAN LEDKEY LIGHTING CO.,LTD.	SUR.:	Shielding Angle:

Table--1

UNIT: cd

C (DEG) γ (DEG)	0	22.5	45	67.5	90	112.5	135	157.5	180	202.5	225	247.5	270	292.5	315	337.5			
0	0.49	0.49	0.49	0.49	0.49	0.49	0.49	0.49	0.49	0.49	0.49	0.49	0.49	0.49	0.49	0.49			
5	3.33	2.15	0.82	1.29	2.31	2.79	1.95	0.36	0.42	0.47	0.74	6.63	9.45	8.43	6.11	3.32			
10	14.5	11.3	5.82	6.14	9.73	11.3	9.88	5.66	2.40	10.68	23.0	24.7	19.9	15.7	11.7	12.2			
15	29.1	23.3	14.0	12.7	19.5	22.3	20.0	17.0	19.8	33.4	40.5	37.7	29.7	25.2	19.2	23.9			
20	45.1	37.0	24.1	17.5	30.7	34.8	31.2	29.2	37.1	47.3	55.0	50.9	39.8	33.3	29.7	37.3			
25	61.7	51.2	35.5	21.8	42.6	48.1	43.3	39.1	47.9	59.4	69.2	64.0	49.9	39.2	41.6	51.1			
30	78.0	65.4	47.4	28.6	54.6	61.5	55.5	48.9	58.8	71.1	83.0	76.7	59.9	46.2	53.4	64.6			
35	93.7	79.1	59.4	37.8	66.5	74.7	67.5	58.5	69.3	82.4	96.2	88.7	69.4	55.9	64.6	77.5			
40	108	92.0	71.1	48.2	78.1	87.7	79.2	67.8	79.4	92.9	109	100	78.3	66.1	75.0	89.7			
45	122	104	82.3	58.6	89.4	100	90.6	76.6	88.9	103	120	111	86.7	75.6	84.5	101			
50	135	115	92.6	68.9	100	112	101	84.8	97.7	112	131	120	94.3	84.2	92.9	111			
55	146	125	102	78.8	110	124	112	92.2	106	120	141	129	100.0	92.0	100	121			
60	156	133	110	87.9	120	135	121	99.0	113	127	149	137	98.7	98.8	107	129			
65	164	140	118	96.4	128	144	129	105	118	132	157	144	88.4	104	112	135			
70	171	146	124	104	136	153	137	110	123	137	163	149	76.8	109	116	141			
75	176	150	128	111	142	160	143	114	127	141	167	153	81.6	112	119	145			
80	179	152	132	116	148	166	148	116	129	143	170	155	95.2	114	121	147			
85	180	153	134	121	152	170	152	118	130	143	171	156	106	115	121	148			
90	180	153	134	123	154	173	154	119	130	143	170	155	111	114	121	148			
95	177	151	133	122	154	173	154	118	129	141	168	153	105	112	119	146			
100	173	147	130	120	151	172	153	117	126	138	164	150	97.2	109	116	143			
105	167	142	126	117	148	168	151	114	122	133	159	145	92.0	104	112	138			
110	159	136	121	115	143	163	146	110	117	128	152	139	91.3	99.3	107	133			
115	151	129	115	111	137	156	140	105	111	121	144	131	90.2	93.1	101	126			
120	141	121	108	107	130	147	133	98.5	103	113	134	123	87.5	86.1	94.3	118			
125	131	112	100	101	121	137	124	91.2	95.0	105	123	114	82.7	78.5	86.6	109			
130	119	103	91.5	93.1	111	126	115	83.1	85.7	95.2	111	103	76.4	70.4	78.3	98.9			
135	107	92.5	82.1	84.1	100	114	104	74.2	75.6	84.8	98.3	92.5	69.0	61.6	69.5	88.4			
140	95.0	81.8	72.0	74.0	88.1	100	91.8	64.6	64.9	73.1	85.3	81.2	60.7	52.4	60.3	77.1			
145	82.1	70.6	61.4	63.1	75.5	86.4	79.0	54.7	54.0	60.2	71.4	69.5	51.9	43.4	50.3	65.0			
150	68.8	59.2	50.4	51.6	62.3	71.6	65.5	44.4	43.3	46.5	58.4	57.3	42.8	35.2	40.1	52.4			
155	55.4	47.5	39.3	39.9	48.6	56.4	51.6	34.1	33.0	33.5	44.6	44.1	34.4	27.6	29.9	39.6			
160	41.9	35.9	28.5	28.5	35.0	41.1	37.6	24.3	20.8	21.1	29.6	30.5	25.7	20.0	20.5	27.7			
165	28.8	24.7	18.4	17.8	21.9	26.2	24.1	15.3	10.46	10.73	16.4	17.9	15.7	11.9	12.4	17.5			
170	16.7	14.4	9.98	8.60	10.6	12.9	12.1	7.52	3.02	3.09	6.23	7.62	6.51	4.71	6.13	9.33			
175	6.29	5.80	3.82	2.24	2.00	2.73	2.66	1.57	0.49	0.49	0.49	0.75	0.55	0.31	0.41	4.24			
180	0.00	0.00	0.00	0.00	0.29	0.34	0.41	0.15	0.21	0.21	0.21	0.20	0.25	0.34	0.36	0.31			

C Range: 0 - 360DEG
 C Interval: 22.5DEG
 Test Speed: HIGH
 Temperature:25.2℃
 Operators:Dano
 Test Date:2023-05-15

γ Range: 0 - 180DEG
 γ Interval: 1.0DEG
 Test System:EVERFINE GO-R5000_V2 SYSTEM V2.00.459
 Humidity:55.3%
 Test Distance:2.900m [K=0.8810]
 Remarks: