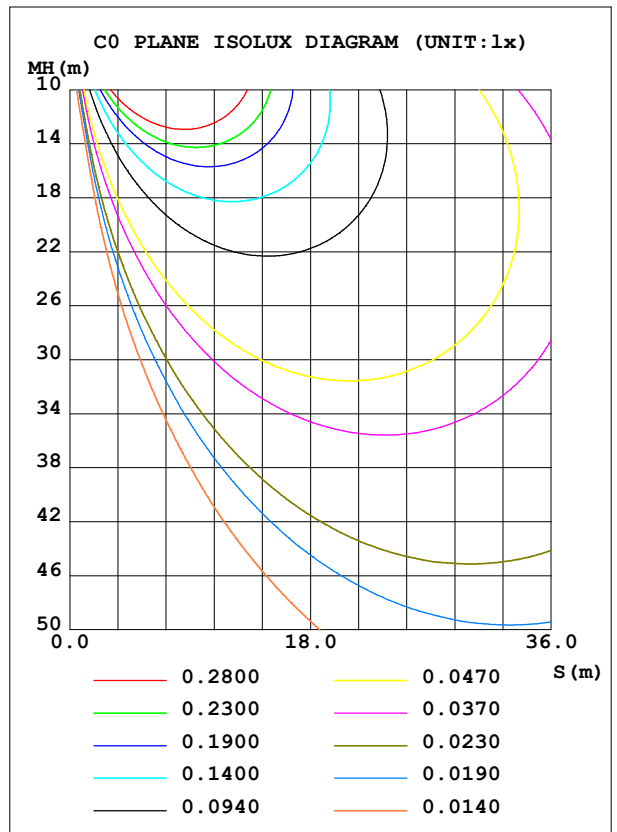
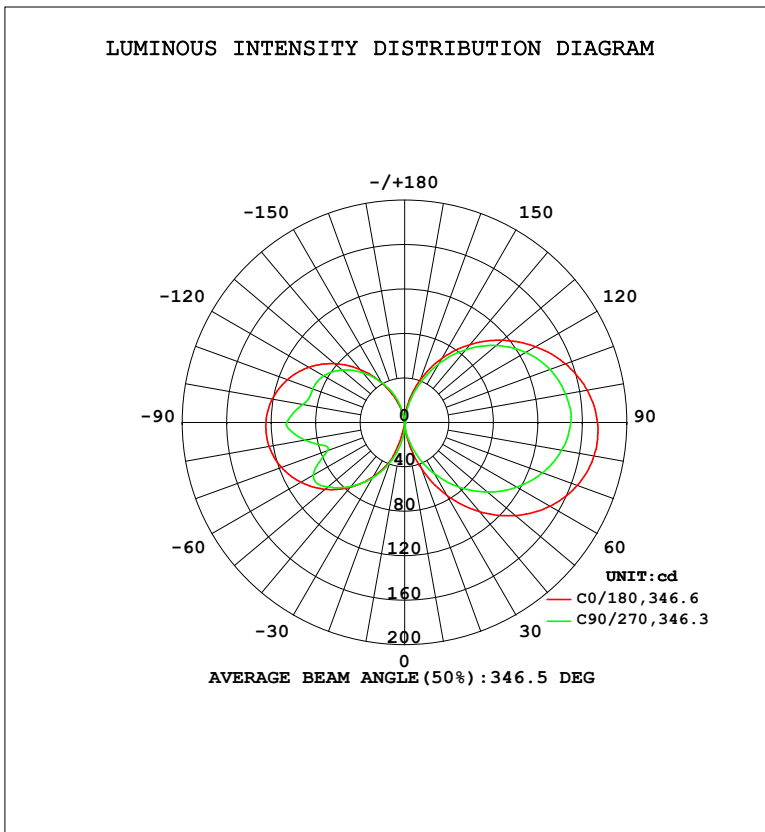


LUMINAIRE PHOTOMETRIC TEST REPORT

Test:U:120.1V I:0.2023A P:24.15W PF:0.9938 Freq:60.01Hz Lamp Flux:1271.25x1 lm		
NAME: PT27-4-3x8S-952C5-MVTD-SB002 3000K	TYPE:	WEIGHT:
SPEC.:	DIM.:	SERIAL No.:
MFR.: FOSHAN LEDKEY LIGHTING CO.,LTD.	SUR.:	Shielding Angle:

DATA OF LAMP		PHOTOMETRIC DATA				Eff: 52.65 lm/W
MODEL		I _{max} (cd)	174.2	S/MH (C0/180)	14.42	
NOMINAL POWER (W)		LOR (%)	100.0	S/MH (C90/270)	13.45	
RATED VOLTAGE (V)	120	TOTAL FLUX (lm)	1271.2	η UP, DN (C0-180)	26.4, 25.7	
NOMINAL FLUX (lm)	1271.25	CIE CLASS	DIFFUSE	η UP, DN (C180-360)	22.7, 25.2	
LAMPS INSIDE	1	η up (%)	49.1	CIBSE SHR NOM	1.25	
TEST VOLTAGE (V)	120	η down (%)	50.9	CIBSE SHR MAX	1.35	



C Range: 0 - 360DEG
 C Interval: 22.5DEG
 Test Speed: HIGH
 Temperature: 25.2 °C
 Operators: Dano
 Test Date: 2023-05-15

γ Range: 0 - 180DEG
 γ Interval: 1.0DEG
 Test System: EVERFINE GO-R5000_V2 SYSTEM V2.00.459
 Humidity: 55.3%
 Test Distance: 2.900m [K=0.8810]
 Remarks:

ZONAL FLUX DIAGRAM

ZONAL FLUX DIAGRAM:

γ	C0	C45	C90	C135	C180	C225	C270	C315	γ	Φ zone	Φ total	%lum,lamp
10	14.14	5.782	9.497	9.676	1.491	22.32	18.90	13.50	0- 10	0.5896	0.5896	0.05,0.05
20	43.78	23.52	29.87	30.50	35.32	52.54	37.94	31.74	10- 20	6.962	7.552	0.59,0.59
30	75.45	46.10	53.09	54.21	56.16	79.44	57.28	54.30	20- 30	21.69	29.24	2.3,2.3
40	104.8	69.09	75.94	77.33	76.09	104.1	75.03	75.01	30- 40	43.42	72.66	5.72,5.72
50	130.3	89.92	97.38	98.94	93.62	125.7	90.42	92.20	40- 50	69.83	142.5	11.2,11.2
60	150.9	107.2	116.5	118.0	107.8	143.3	94.79	105.4	50- 60	97.11	239.6	18.8,18.8
70	165.4	120.0	132.2	133.6	118.1	156.1	73.73	114.2	60- 70	120.5	360.1	28.3,28.3
80	173.2	127.7	143.6	144.7	123.9	163.1	91.34	118.4	70- 80	138.1	498.2	39.2,39.2
90	173.5	130.1	149.4	150.3	124.9	163.7	106.1	118.0	80- 90	149.0	647.2	50.9,50.9
100	166.9	126.3	147.1	149.6	121.0	157.9	93.36	113.3	90-100	148.1	795.3	62.6,62.6
110	154.0	117.4	139.3	142.7	112.5	146.2	88.10	104.4	100-110	136.4	931.7	73.3,73.3
120	136.4	104.4	126.1	129.8	99.45	129.3	84.15	91.49	110-120	117.4	1049	82.5,82.5
130	115.2	88.44	107.8	111.6	82.43	107.0	73.45	75.93	120-130	92.61	1142	89.8,89.8
140	91.61	69.58	85.62	89.33	62.27	82.05	58.43	58.41	130-140	65.43	1207	95,95
150	66.27	48.66	60.51	63.77	40.69	55.56	41.27	38.90	140-150	39.58	1247	98.1,98.1
160	40.31	27.46	34.04	36.86	20.65	28.76	24.88	19.99	150-160	18.71	1265	99.5,99.5
170	15.92	9.564	10.32	12.15	3.718	6.541	6.496	6.024	160-170	5.442	1271	100,100
180	0	0	0.2458	0.4091	0.2136	0.2069	0.2379	0.3420	170-180	0.4175	1271	100,100
DEG	LUMINOUS INTENSITY:cd									UNIT:lm		

Conical surface Flux(90deg): 104.13 lm

%lum = 8.2%

%lamp = 8.2%

Conical surface Flux(120deg): 239.6 lm

%lum = 18.8%

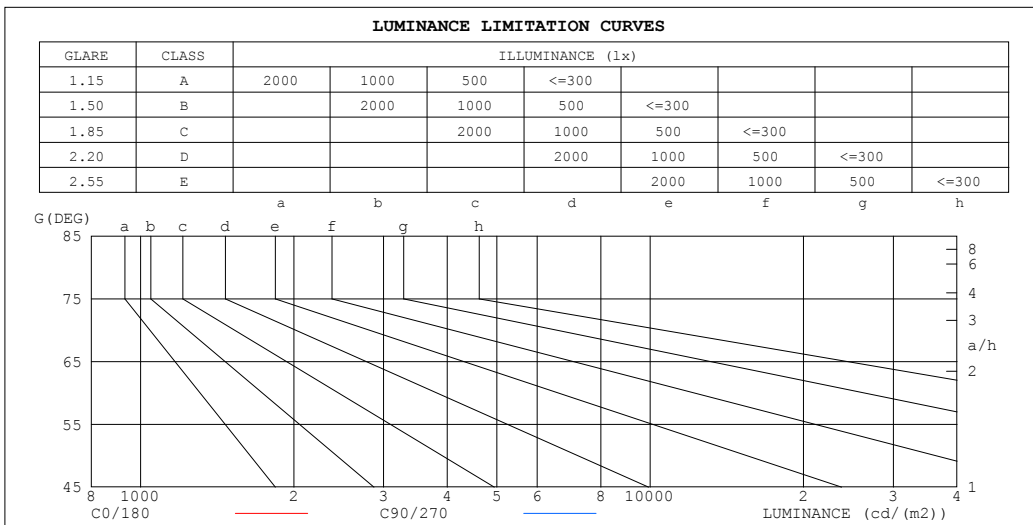
%lamp = 18.8%

C Range: 0 - 360DEG
 C Interval: 22.5DEG
 Test Speed: HIGH
 Temperature:25.2℃
 Operators:Dano
 Test Date:2023-05-15

γ Range: 0 - 180DEG
 γ Interval: 1.0DEG
 Test System:EVERFINE GO-R5000_V2 SYSTEM V2.00.459
 Humidity:55.3%
 Test Distance:2.900m [K=0.8810]
 Remarks:

LUMINANCE LIMITATION CURVES

Test:U:120.1V I:0.2023A P:24.15W PF:0.9938 Freq:60.01Hz Lamp Flux:1271.25x1 lm		
NAME: PT27-4-3x8S-952C5-MVTD-SB002 3000K	TYPE:	WEIGHT:
SPEC.:	DIM.:	SERIAL No.:
MFR.: FOSHAN LEDKEY LIGHTING CO.,LTD.	SUR.:	Shielding Angle:



LUMINANCE cd/(m2)		
G (DEG)	C0/180	C90/270
85	1491149	1415675
80	744117	691927
75	490556	448029
70	360917	323480
65	280706	247245
60	225111	194940
55	183781	156620
50	151262	126743
45	124616	102788

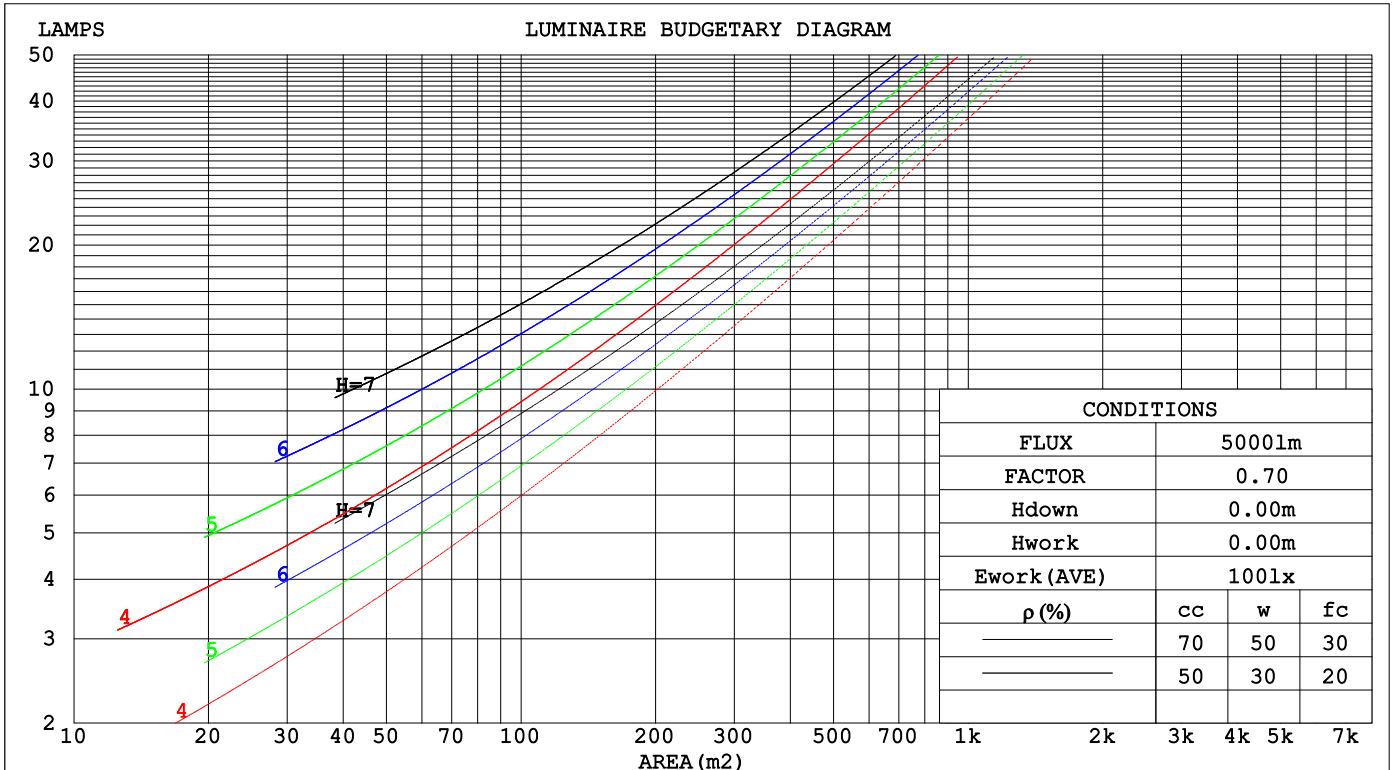
C Range: 0 - 360DEG
 C Interval: 22.5DEG
 Test Speed: HIGH
 Temperature: 25.2°C
 Operators: Dano
 Test Date: 2023-05-15

γ Range: 0 - 180DEG
 γ Interval: 1.0DEG
 Test System: EVERFINE GO-R5000_V2 SYSTEM V2.00.459
 Humidity: 55.3%
 Test Distance: 2.900m [K=0.8810]
 Remarks:

CU AND LUMINAIRE BUDGETARY ESTIMATE DIAGRAM

Test:U:120.1V I:0.2023A P:24.15W PF:0.9938 Freq:60.01Hz Lamp Flux:1271.25x1 lm		
NAME: PT27-4-3x8S-952C5-MVTD-SB002 3000K	TYPE:	WEIGHT:
SPEC.:	DIM.:	SERIAL No.:
MFR.: FOSHAN LEDKEY LIGHTING CO.,LTD.	SUR.:	Shielding Angle:

ρ_{cc}	80%			70%			50%			30%			10%			0
ρ_w	50%	30%	10%	50%	30%	10%	50%	30%	10%	50%	30%	10%	50%	30%	10%	0
ρ_{fc}	20%			20%			20%			20%			20%			0
RCR	RCR:Room Cavity Ratio						Coefficients of Utilization(CU)									
0.0	1.07	1.07	1.07	.99	.99	.99	.84	.84	.84	.70	.70	.70	.57	.57	.57	.51
1.0	.85	.79	.73	.78	.72	.67	.64	.60	.56	.52	.49	.46	.41	.38	.36	.30
2.0	.71	.62	.55	.65	.57	.51	.53	.47	.42	.42	.38	.34	.32	.29	.26	.21
3.0	.60	.51	.43	.55	.46	.40	.45	.38	.33	.36	.30	.26	.27	.23	.19	.15
4.0	.52	.42	.35	.48	.39	.32	.39	.32	.26	.31	.25	.21	.23	.19	.15	.11
5.0	.46	.36	.29	.42	.33	.26	.34	.27	.21	.27	.21	.17	.20	.16	.12	.09
6.0	.40	.31	.24	.37	.28	.22	.30	.23	.18	.24	.18	.14	.18	.13	.10	.07
7.0	.36	.27	.20	.33	.25	.19	.27	.20	.15	.21	.16	.12	.16	.12	.08	.06
8.0	.32	.24	.17	.30	.22	.16	.24	.18	.13	.19	.14	.10	.14	.10	.07	.05
9.0	.29	.21	.15	.27	.19	.14	.22	.16	.11	.17	.12	.09	.13	.09	.06	.04
10.0	.27	.19	.13	.24	.17	.12	.20	.14	.10	.16	.11	.08	.12	.08	.05	.03



C Range: 0 - 360DEG
 C Interval: 22.5DEG
 Test Speed: HIGH
 Temperature:25.2°C
 Operators:Dano
 Test Date:2023-05-15

γ Range: 0 - 180DEG
 γ Interval: 1.0DEG
 Test System:EVERFINE GO-R5000_V2 SYSTEM V2.00.459
 Humidity:55.3%
 Test Distance:2.900m [K=0.8810]
 Remarks:

WEC AND CCEC

Test:U:120.1V I:0.2023A P:24.15W PF:0.9938 Freq:60.01Hz Lamp Flux:1271.25x1 lm		
NAME: PT27-4-3x8S-952C5-MVTD-SB002 3000K	TYPE:	WEIGHT:
SPEC.:	DIM.:	SERIAL No.:
MFR.: FOSHAN LEDKEY LIGHTING CO.,LTD.	SUR.:	Shielding Angle:

ρcc	80%			70%			50%			30%			10%			0
ρw	50%	30%	10%	50%	30%	10%	50%	30%	10%	50%	30%	10%	50%	30%	10%	0
ρfc	20%			20%			20%			20%			20%			0
RCR	RCR:Room Cavity Ratio						Wall Exitance Coefficients(WEC)									
0.0																
1.0	.445	.253	.080	.423	.241	.077	.381	.219	.070	.343	.198	.063	.308	.178	.057	
2.0	.365	.200	.061	.345	.190	.059	.307	.171	.053	.272	.152	.048	.239	.135	.043	
3.0	.315	.168	.050	.297	.159	.048	.262	.142	.043	.229	.126	.039	.199	.110	.034	
4.0	.278	.145	.043	.262	.137	.040	.229	.122	.036	.200	.107	.032	.172	.094	.028	
5.0	.250	.127	.037	.234	.120	.035	.205	.107	.031	.177	.094	.028	.152	.081	.024	
6.0	.227	.114	.033	.212	.107	.031	.185	.095	.028	.160	.083	.024	.136	.072	.021	
7.0	.207	.103	.029	.194	.097	.028	.169	.085	.025	.145	.075	.022	.123	.064	.019	
8.0	.191	.093	.026	.179	.088	.025	.156	.078	.022	.134	.068	.020	.113	.058	.017	
9.0	.177	.086	.024	.166	.081	.023	.144	.071	.020	.124	.062	.018	.104	.053	.015	
10.0	.165	.079	.022	.155	.075	.021	.134	.066	.019	.115	.057	.016	.097	.049	.014	

ρcc	80%			70%			50%			30%			10%			0
ρw	50%	30%	10%	50%	30%	10%	50%	30%	10%	50%	30%	10%	50%	30%	10%	0
ρfc	20%			20%			20%			20%			20%			0
RCR	RCR:Room Cavity Ratio						Ceiling Cavity Exitance Coefficients(CCEC)									
0.0	.564	.564	.564	.482	.482	.482	.329	.329	.329	.189	.189	.189	.060	.060	.060	
1.0	.567	.532	.501	.485	.457	.431	.332	.314	.298	.191	.182	.173	.061	.059	.056	
2.0	.562	.511	.469	.481	.440	.405	.330	.304	.283	.190	.177	.166	.061	.057	.054	
3.0	.555	.496	.450	.476	.428	.390	.327	.297	.273	.189	.174	.161	.061	.056	.053	
4.0	.547	.485	.437	.470	.419	.380	.323	.292	.268	.187	.171	.158	.060	.056	.052	
5.0	.540	.476	.429	.464	.412	.373	.319	.288	.264	.185	.169	.156	.060	.055	.052	
6.0	.532	.469	.423	.458	.406	.368	.316	.284	.261	.183	.167	.155	.059	.055	.051	
7.0	.525	.463	.419	.452	.401	.365	.312	.281	.259	.181	.166	.154	.059	.054	.051	
8.0	.519	.458	.416	.447	.397	.362	.309	.279	.257	.180	.164	.153	.058	.054	.051	
9.0	.512	.453	.413	.441	.393	.360	.306	.276	.256	.178	.163	.153	.058	.054	.051	
10.0	.507	.449	.411	.437	.390	.359	.303	.274	.255	.177	.162	.152	.057	.053	.050	

C Range: 0 - 360DEG
 C Interval: 22.5DEG
 Test Speed: HIGH
 Temperature:25.2℃
 Operators:Dano
 Test Date:2023-05-15

γ Range: 0 - 180DEG
 γ Interval: 1.0DEG
 Test System:EVERFINE GO-R5000_V2 SYSTEM V2.00.459
 Humidity:55.3%
 Test Distance:2.900m [K=0.8810]
 Remarks:

UGR(Unified Glare Rating) Table

Test:U:120.1V I:0.2023A P:24.15W PF:0.9938 Freq:60.01Hz										
Lamp Flux:1271.25x1 lm										
NAME: PT27-4-3x8S-952C5-MVTD-SB002 3000K					TYPE:			WEIGHT:		
SPEC.:					DIM.:			SERIAL No.:		
MFR.: FOSHAN LEDKEY LIGHTING CO.,LTD.					SUR.:			Shielding Angle:		
ceiling/cavity	0.7	0.7	0.5	0.5	0.3	0.7	0.7	0.5	0.5	0.3
walls	0.5	0.3	0.5	0.3	0.3	0.5	0.3	0.5	0.3	0.3
working plane	0.2	0.2	0.2	0.2	0.2	0.2	0.2	0.2	0.2	0.2
Room dimensions	Viewed crosswise					Viewed endwise				
x = 2H y = 2H	24.5	26.7	26.3	28.6	31.0	25.2	27.4	27.0	29.2	31.6
3H	28.5	30.5	30.3	32.4	34.8	29.0	31.0	30.8	32.9	35.3
4H	30.5	32.5	32.4	34.4	36.8	30.9	32.8	32.7	34.7	37.2
6H	32.8	34.6	34.6	36.5	39.0	33.0	34.8	34.9	36.7	39.2
8H	34.0	35.7	35.8	37.7	40.2	34.1	35.9	36.0	37.8	40.3
12H	35.3	37.0	37.2	38.9	41.5	35.4	37.1	37.3	39.0	41.6
4H 2H	24.8	26.8	26.7	28.7	31.1	25.7	27.6	27.5	29.5	32.0
3H	28.9	30.6	30.8	32.6	35.1	29.7	31.4	31.6	33.4	35.9
4H	31.1	32.7	33.0	34.7	37.2	31.9	33.5	33.8	35.4	38.0
6H	33.6	35.0	35.5	37.0	39.5	34.2	35.6	36.1	37.6	40.2
8H	34.9	36.2	36.8	38.2	40.8	35.5	36.8	37.4	38.8	41.4
12H	36.4	37.6	38.4	39.6	42.3	36.8	38.1	38.8	40.1	42.7
8H 4H	31.5	32.8	33.4	34.8	37.4	32.4	33.7	34.3	35.7	38.3
6H	34.1	35.3	36.1	37.3	40.0	35.0	36.2	37.0	38.2	40.9
8H	35.6	36.7	37.6	38.7	41.4	36.5	37.6	38.5	39.6	42.3
12H	37.4	38.3	39.4	40.4	43.1	38.2	39.1	40.2	41.2	43.9
12H 4H	31.6	32.8	33.5	34.8	37.4	32.5	33.7	34.4	35.7	38.3
6H	34.3	35.3	36.3	37.4	40.1	35.2	36.3	37.2	38.3	41.0
8H	35.9	36.8	37.9	38.9	41.6	36.9	37.8	38.9	39.8	42.6
CIE190: 2010										

CIE190: 2010
Area: 0.001257 m2

C Range: 0 - 360DEG
C Interval: 22.5DEG
Test Speed: HIGH
Temperature:25.2℃
Operators:Dano
Test Date:2023-05-15

γ Range: 0 - 180DEG
γ Interval: 1.0DEG
Test System:EVERFINE GO-R5000_V2 SYSTEM V2.00.459
Humidity:55.3%
Test Distance:2.900m [K=0.8810]
Remarks:

UTILIZATION FACTORS TABLE

Test:U:120.1V I:0.2023A P:24.15W PF:0.9938 Freq:60.01Hz Lamp Flux:1271.25x1 lm		
NAME: PT27-4-3x8S-952C5-MVTD-SB002 3000K	TYPE:	WEIGHT:
SPEC.:	DIM.:	SERIAL No.:
MFR.: FOSHAN LEDKEY LIGHTING CO.,LTD.	SUR.:	Shielding Angle:

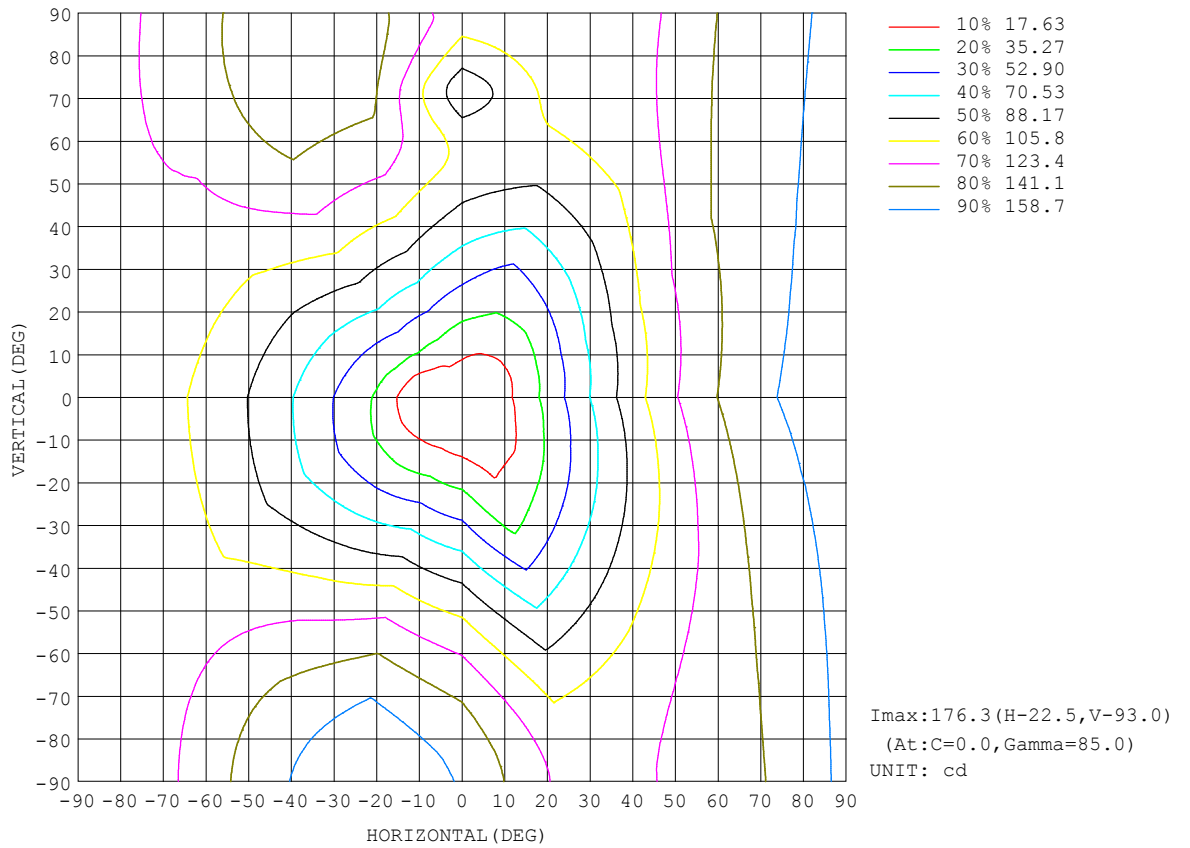
REFLECTANCE										
Ceiling	0.8	0.8	0.8	0.7	0.7	0.7	0.5	0.5	0.5	0
Walls	0.7	0.5	0.3	0.7	0.5	0.3	0.7	0.5	0.3	0
Working plane	0.2	0.2	0.2	0.2	0.2	0.2	0.2	0.2	0.2	0
ROOM INDEX	UTILIZATION FACTORS (PERCENT) k(RI) x RCR = 5									
k = 0.60	33	20	13	32	19	12	28	17	11	4
0.80	42	27	18	39	26	18	34	23	16	6
1.00	49	34	24	46	32	23	40	30	20	9
1.25	56	41	31	52	38	29	44	33	25	12
1.50	61	46	36	57	43	34	48	38	30	14
2.00	69	55	45	64	51	42	54	44	37	19
2.50	74	62	51	69	57	48	58	49	42	22
3.00	79	67	57	73	62	53	61	53	46	24
4.00	84	74	65	78	68	61	65	58	52	28
5.00	88	79	71	81	73	66	68	62	56	31
ROOM INDEX	UF(total)									Direct
According to DIN EN 13032-2 2004			Suspended				SHRNOM = 1.25			

C Range: 0 - 360DEG
 C Interval: 22.5DEG
 Test Speed: HIGH
 Temperature:25.2°C
 Operators:Dano
 Test Date:2023-05-15

γ Range: 0 - 180DEG
 γ Interval: 1.0DEG
 Test System:EVERFINE GO-R5000_V2 SYSTEM V2.00.459
 Humidity:55.3%
 Test Distance:2.900m [K=0.8810]
 Remarks:

ISOCANDELA DIAGRAM

Test:U:120.1V I:0.2023A P:24.15W PF:0.9938 Freq:60.01Hz Lamp Flux:1271.25x1 lm		
NAME: PT27-4-3x8S-952C5-MVTD-SB002 3000K	TYPE:	WEIGHT:
SPEC.:	DIM.:	SERIAL No.:
MFR.: FOSHAN LEDKEY LIGHTING CO.,LTD.	SUR.:	Shielding Angle:

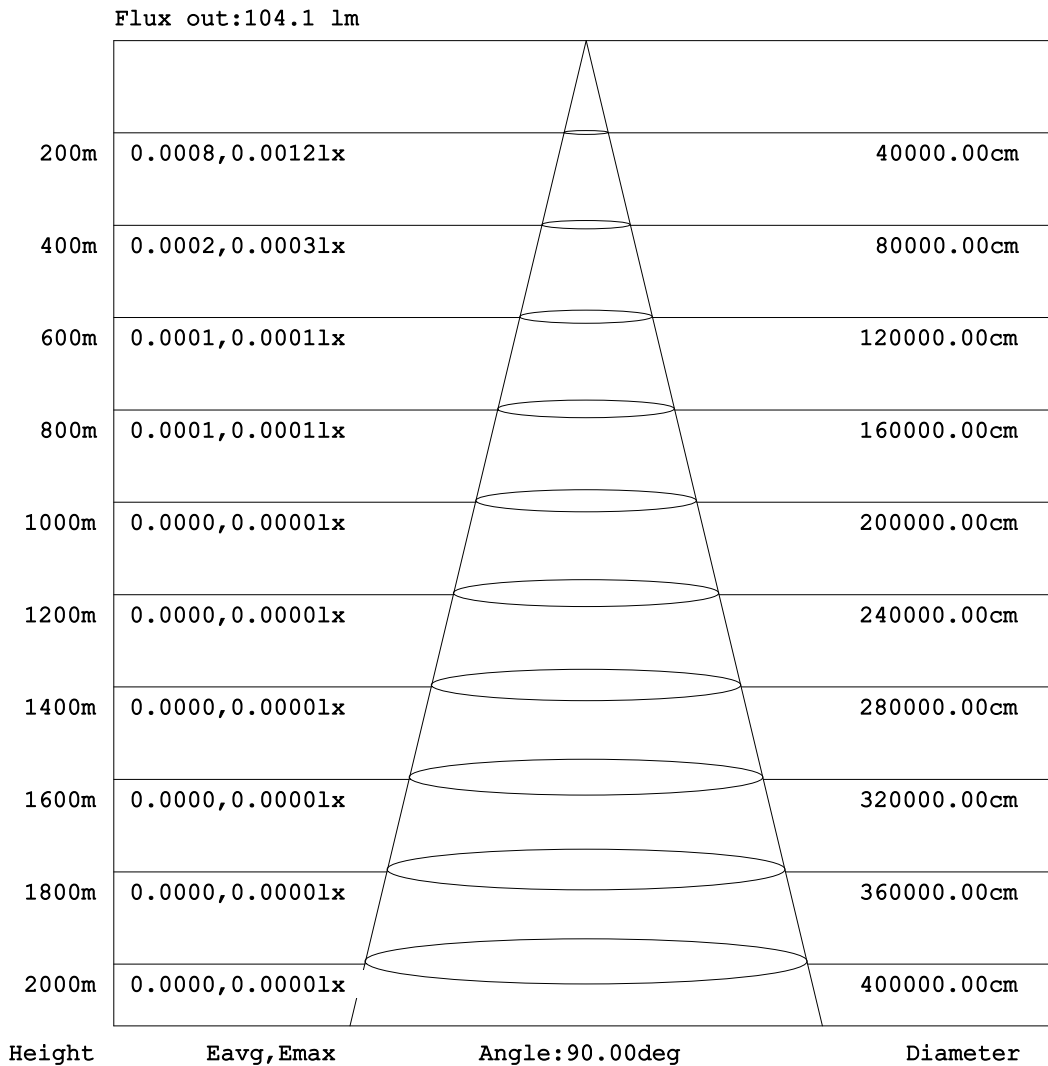


C Range: 0 - 360DEG
C Interval: 22.5DEG
Test Speed: HIGH
Temperature:25.2°C
Operators:Dano
Test Date:2023-05-15

γ Range: 0 - 180DEG
γ Interval: 1.0DEG
Test System:EVERFINE GO-R5000_V2 SYSTEM V2.00.459
Humidity:55.3%
Test Distance:2.900m [K=0.8810]
Remarks:

AAI Figure

Test:U:120.1V I:0.2023A P:24.15W PF:0.9938 Freq:60.01Hz Lamp Flux:1271.25x1 lm		
NAME: PT27-4-3x8S-952C5-MVTD-SB002 3000K	TYPE:	WEIGHT:
SPEC.:	DIM.:	SERIAL No.:
MFR.: FOSHAN LEDKEY LIGHTING CO.,LTD.	SUR.:	Shielding Angle:



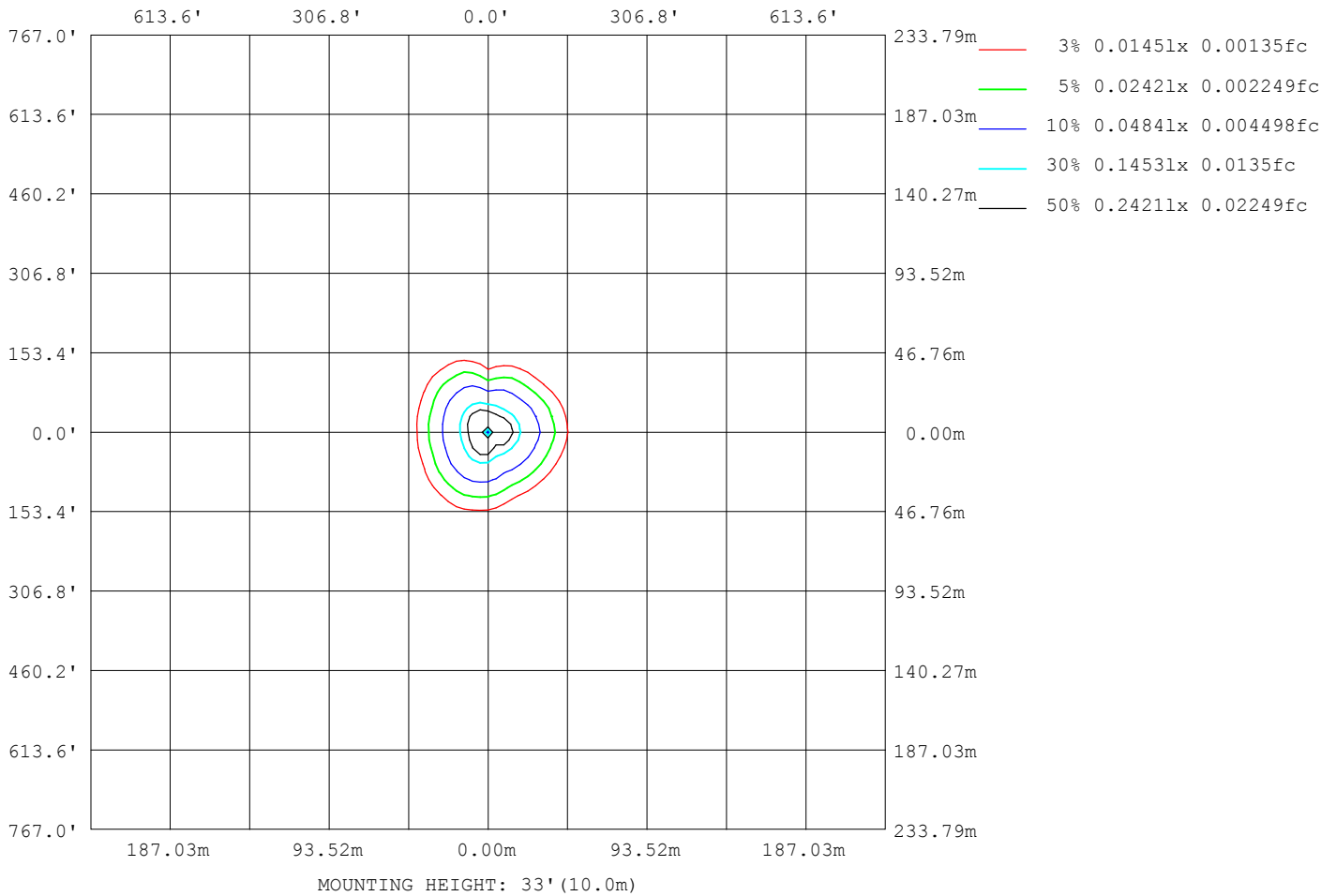
Note:The Curves indicate the illuminated area and the average illumination when the luminaire is at different distance.

C Range: 0 - 360DEG
 C Interval: 22.5DEG
 Test Speed: HIGH
 Temperature:25.2℃
 Operators:Dano
 Test Date:2023-05-15

γ Range: 0 - 180DEG
 γ Interval: 1.0DEG
 Test System:EVERFINE GO-R5000_V2 SYSTEM V2.00.459
 Humidity:55.3%
 Test Distance:2.900m [K=0.8810]
 Remarks:

ISOLUX DIAGRAM

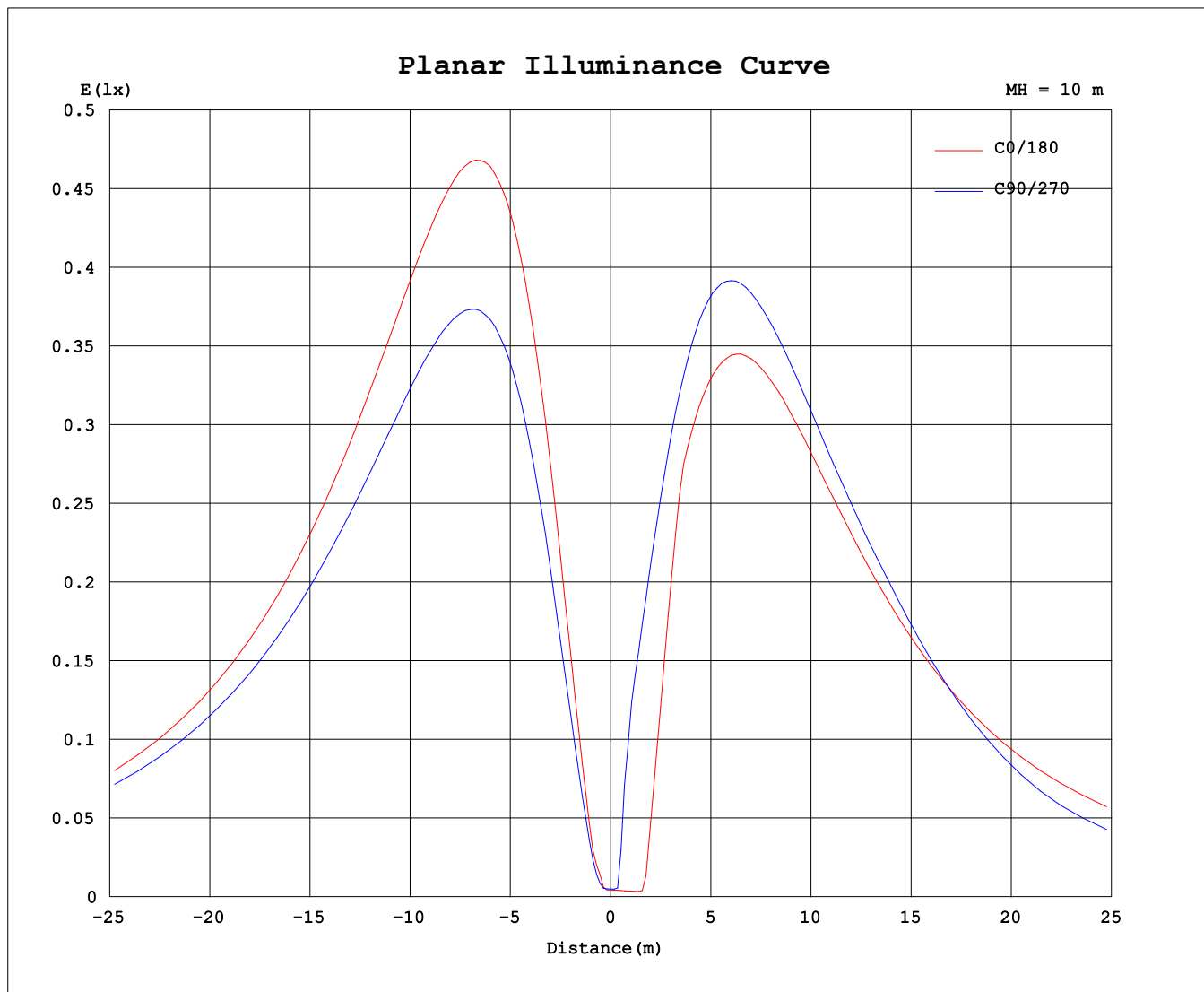
Test:U:120.1V I:0.2023A P:24.15W PF:0.9938 Freq:60.01Hz Lamp Flux:1271.25x1 lm		
NAME: PT27-4-3x8S-952C5-MVTD-SB002 3000K	TYPE:	WEIGHT:
SPEC.:	DIM.:	SERIAL No.:
MFR.: FOSHAN LEDKEY LIGHTING CO.,LTD.	SUR.:	Shielding Angle:



C Range: 0 - 360DEG
C Interval: 22.5DEG
Test Speed: HIGH
Temperature:25.2°C
Operators:Dano
Test Date:2023-05-15

γ Range: 0 - 180DEG
γ Interval: 1.0DEG
Test System:EVERFINE GO-R5000_V2 SYSTEM V2.00.459
Humidity:55.3%
Test Distance:2.900m [K=0.8810]
Remarks:

Planar Illuminance Curve



C Range: 0 - 360DEG
C Interval: 22.5DEG
Test Speed: HIGH
Temperature: 25.2°C
Operators: Dano
Test Date: 2023-05-15

γ Range: 0 - 180DEG
γ Interval: 1.0DEG
Test System: EVERFINE GO-R5000_V2 SYSTEM V2.00.459
Humidity: 55.3%
Test Distance: 2.900m [K=0.8810]
Remarks:

LUMINOUS DISTRIBUTION INTENSITY DATA

Test:U:120.1V I:0.2023A P:24.15W PF:0.9938 Freq:60.01Hz Lamp Flux:1271.25x1 lm		
NAME: PT27-4-3x8S-952C5-MVTD-SB002 3000K	TYPE:	WEIGHT:
SPEC.:	DIM.:	SERIAL No.:
MFR.: FOSHAN LEDKEY LIGHTING CO.,LTD.	SUR.:	Shielding Angle:

Table--1

UNIT: cd

C (DEG) γ (DEG)	0	22.5	45	67.5	90	112.5	135	157.5	180	202.5	225	247.5	270	292.5	315	337.5			
0	0.47	0.47	0.47	0.47	0.47	0.47	0.47	0.47	0.47	0.47	0.47	0.47	0.47	0.47	0.47	0.47			
5	3.22	2.20	0.85	1.30	2.29	2.70	2.11	0.36	0.41	0.46	0.80	6.91	9.39	7.98	6.04	4.21			
10	14.1	11.1	5.78	5.95	9.50	11.0	9.68	5.48	1.49	9.67	22.3	23.5	18.9	15.0	13.5	11.8			
15	28.3	22.8	13.7	12.2	18.9	21.5	19.5	16.0	17.8	31.2	38.7	35.9	28.3	24.2	21.7	23.1			
20	43.8	36.2	23.5	17.0	29.9	33.8	30.5	28.0	35.3	45.3	52.5	48.6	37.9	32.0	31.7	36.1			
25	59.8	50.0	34.6	21.2	41.4	46.6	42.3	37.9	45.8	57.0	66.2	61.1	47.7	37.8	43.1	49.4			
30	75.4	63.8	46.1	27.9	53.1	59.7	54.2	47.3	56.2	68.3	79.4	73.3	57.3	44.5	54.3	62.4			
35	90.6	77.1	57.7	36.8	64.6	72.5	65.9	56.6	66.4	79.1	92.1	84.8	66.4	54.0	65.0	74.9			
40	105	89.6	69.1	46.9	75.9	85.1	77.3	65.6	76.1	89.2	104	95.8	75.0	63.8	75.0	86.7			
45	118	101	79.9	57.0	86.9	97.3	88.4	74.1	85.2	98.6	115	106	83.1	72.8	84.0	97.6			
50	130	112	89.9	66.9	97.4	109	98.9	82.1	93.6	107	126	115	90.4	81.2	92.2	108			
55	141	121	99.1	76.4	107	120	109	89.3	101	115	135	124	96.0	88.6	99.3	117			
60	151	130	107	85.3	117	131	118	95.7	108	122	143	131	94.8	95.1	105	124			
65	159	136	114	93.6	125	140	126	101	113	127	150	137	85.0	101	110	131			
70	165	142	120	101	132	149	134	106	118	132	156	143	73.7	105	114	136			
75	170	146	125	108	139	156	140	110	122	135	160	146	78.1	108	117	140			
80	173	148	128	113	144	161	145	113	124	137	163	149	91.3	110	118	142			
85	174	149	130	117	147	165	148	115	125	138	164	149	102	110	119	143			
90	173	148	130	119	149	168	150	115	125	137	164	149	106	110	118	143			
95	171	146	129	118	149	168	151	115	124	136	162	147	101	108	116	141			
100	167	143	126	116	147	167	150	113	121	133	158	144	93.4	105	113	138			
105	161	138	122	113	144	163	147	110	117	128	153	139	88.8	101	109	133			
110	154	133	117	111	139	158	143	106	112	123	146	133	88.1	95.6	104	128			
115	146	126	111	108	133	151	137	101	107	117	139	126	86.9	89.7	98.3	121			
120	136	118	104	103	126	143	130	95.3	99.5	109	129	118	84.2	82.9	91.5	113			
125	126	109	96.8	97.7	118	133	121	88.4	91.4	101	119	109	79.6	75.6	84.0	105			
130	115	99.7	88.4	90.3	108	123	112	80.6	82.4	91.8	107	99.1	73.5	67.8	75.9	95.2			
135	104	89.8	79.4	81.5	97.2	111	101	71.9	72.7	81.6	94.9	88.7	66.4	59.3	67.4	85.0			
140	91.6	79.3	69.6	71.7	85.6	97.5	89.3	62.6	62.3	70.4	82.1	77.9	58.4	50.5	58.4	74.1			
145	79.1	68.4	59.3	61.1	73.4	83.9	76.9	52.9	51.5	57.7	68.7	66.8	49.9	41.8	48.8	62.5			
150	66.3	57.3	48.7	49.9	60.5	69.5	63.8	42.8	40.7	44.2	55.6	55.2	41.3	34.0	38.9	50.3			
155	53.3	45.9	37.9	38.6	47.3	54.7	50.3	32.9	30.3	31.6	42.9	42.5	33.1	26.6	29.1	38.1			
160	40.3	34.7	27.5	27.5	34.0	39.9	36.9	24.1	20.6	21.0	28.8	29.6	24.9	19.2	20.0	26.7			
165	27.6	23.8	17.7	17.2	21.4	25.6	23.8	16.2	11.6	11.8	16.5	17.5	15.3	11.5	12.1	16.8			
170	15.9	13.9	9.56	8.31	10.3	12.7	12.2	7.83	3.72	3.82	6.54	7.60	6.50	4.61	6.02	9.02			
175	5.96	5.50	3.58	2.16	1.99	2.80	2.70	1.63	0.63	0.65	0.67	0.87	0.66	0.34	0.42	4.14			
180	0.00	0.00	0.00	0.00	0.25	0.35	0.41	0.16	0.21	0.22	0.21	0.19	0.24	0.32	0.34	0.31			

C Range: 0 - 360DEG
 C Interval: 22.5DEG
 Test Speed: HIGH
 Temperature:25.2℃
 Operators:Dano
 Test Date:2023-05-15

γ Range: 0 - 180DEG
 γ Interval: 1.0DEG
 Test System:EVERFINE GO-R5000_V2 SYSTEM V2.00.459
 Humidity:55.3%
 Test Distance:2.900m [K=0.8810]
 Remarks: