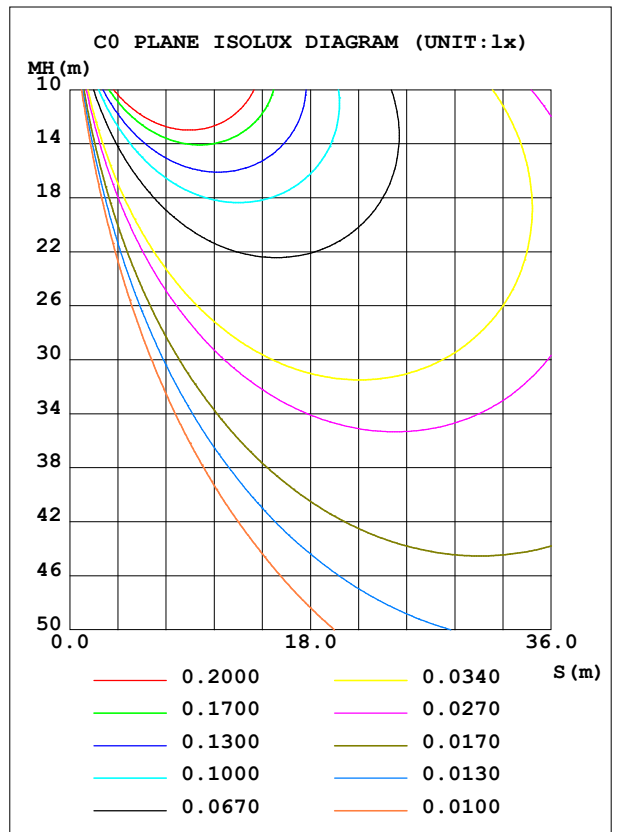
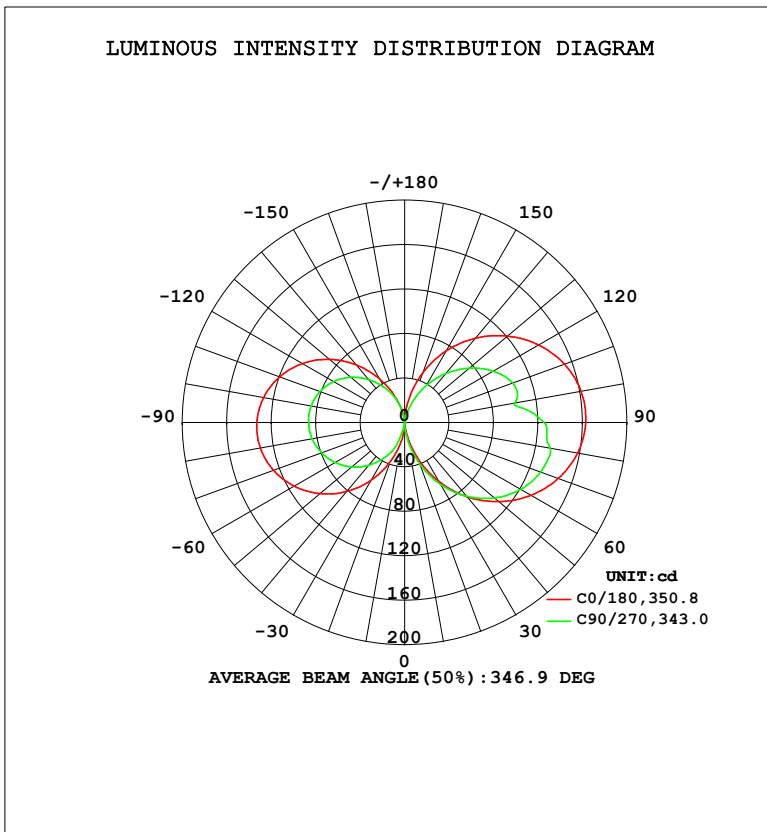


LUMINAIRE PHOTOMETRIC TEST REPORT

Test:U:120.1V I:0.2014A P:24.03W PF:0.9934 Freq:60.01Hz Lamp Flux:1103.83x1 lm		
NAME: PT27-4-3x8S-952C5-MVTD-BK 5000K	TYPE:	WEIGHT:
SPEC.:	DIM.:	SERIAL No.:
MFR.: FOSHAN LEDKEY LIGHTING CO.,LTD.	SUR.:	Shielding Angle:

DATA OF LAMP		PHOTOMETRIC DATA				Eff: 45.93 lm/W
MODEL		I _{max} (cd)	163.1	S/MH (C0/180)	14.17	
NOMINAL POWER (W)		LOR (%)	100.0	S/MH (C90/270)	12.04	
RATED VOLTAGE (V)	120	TOTAL FLUX (lm)	1103.8	η UP, DN (C0-180)	23.6, 26.8	
NOMINAL FLUX (lm)	1103.83	CIE CLASS	DIFFUSE	η UP, DN (C180-360)	25.0, 24.7	
LAMPS INSIDE	1	η up (%)	48.6	CIBSE SHR NOM	1.25	
TEST VOLTAGE (V)	120	η down (%)	51.4	CIBSE SHR MAX	1.35	



C Range: 0 - 360DEG
 C Interval: 22.5DEG
 Test Speed: HIGH
 Temperature: 25.2 °C
 Operators: Dano
 Test Date: 2023-05-13

γ Range: 0 - 180DEG
 γ Interval: 1.0DEG
 Test System: EVERFINE GO-R5000_V2 SYSTEM V2.00.459
 Humidity: 55.3%
 Test Distance: 2.900m [K=0.8810]
 Remarks:

ZONAL FLUX DIAGRAM

ZONAL FLUX DIAGRAM:

γ	C0	C45	C90	C135	C180	C225	C270	C315	γ	Φ zone	Φ total	%lum,lamp
10	8.369	6.555	15.16	13.84	16.23	13.14	0.4873	4.743	0- 10	0.4839	0.4839	0.04,0.04
20	33.36	20.35	39.52	35.34	37.20	41.35	21.33	20.38	10- 20	5.958	6.441	0.58,0.58
30	61.02	38.26	64.15	57.44	59.73	64.97	36.80	37.46	20- 30	19.31	25.75	2.33,2.33
40	87.28	57.68	86.60	77.43	81.07	87.41	50.40	52.24	30- 40	38.35	64.09	5.81,5.81
50	111.0	74.85	105.7	94.19	99.72	108.0	62.41	66.59	40- 50	61.14	125.2	11.3,11.3
60	131.3	88.55	120.6	106.9	114.8	126.0	72.20	78.71	50- 60	84.91	210.1	19,19
70	147.2	98.21	130.2	114.9	125.6	140.3	79.67	88.11	60- 70	106.2	316.3	28.7,28.7
80	158.1	103.6	133.1	117.9	131.9	149.8	84.59	94.51	70- 80	121.9	438.2	39.7,39.7
90	162.9	104.6	125.3	115.9	133.1	153.5	86.40	97.39	80- 90	129.5	567.7	51.4,51.4
100	161.2	100.7	100.4	109.4	129.0	150.9	85.56	96.73	90-100	127.4	695.1	63,63
110	153.2	93.13	103.6	98.89	119.9	142.4	81.20	92.53	100-110	117.5	812.5	73.6,73.6
120	139.4	82.23	92.37	85.34	106.2	128.4	73.77	85.00	110-120	101.0	913.6	82.8,82.8
130	120.9	68.48	76.16	69.51	88.53	109.5	63.44	74.50	120-130	79.48	993.1	90,90
140	98.92	52.52	57.58	52.06	67.65	87.09	50.62	60.77	130-140	56.07	1049	95,95
150	74.12	35.68	37.64	33.67	45.23	61.78	36.40	42.64	140-150	33.95	1083	98.1,98.1
160	47.22	19.79	18.00	15.67	23.87	33.68	22.08	22.92	150-160	15.92	1099	99.6,99.6
170	20.14	8.296	2.525	2.067	5.927	9.101	6.506	7.285	160-170	4.507	1104	100,100
180	0	0	0.0811	0.1718	0.1624	0.1628	0.1580	0.1726	170-180	0.3260	1104	100,100
DEG	LUMINOUS INTENSITY:cd									UNIT:lm		

Conical surface Flux(90deg): 91.672 lm

%lum = 8.3%

%lamp = 8.3%

Conical surface Flux(120deg): 210.15 lm

%lum = 19.0%

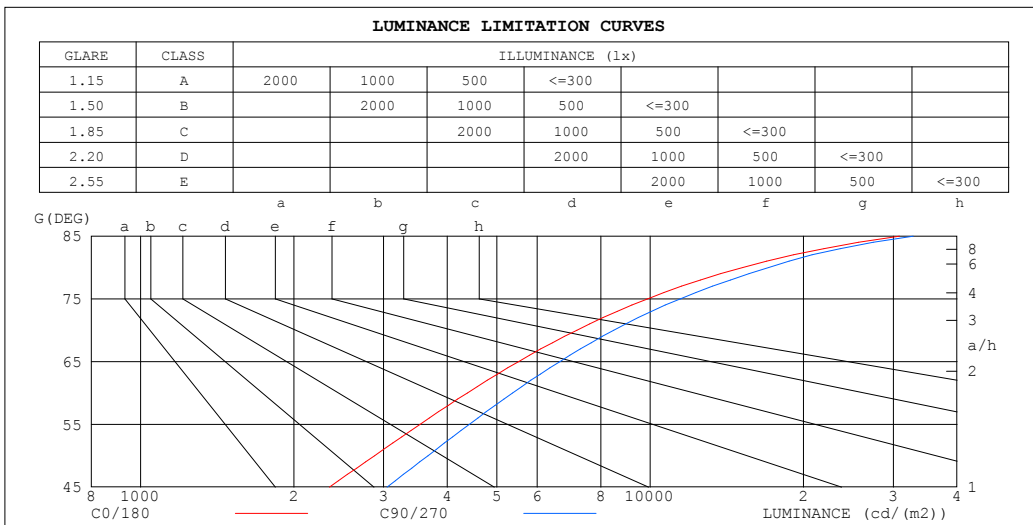
%lamp = 19.0%

C Range: 0 - 360DEG
 C Interval: 22.5DEG
 Test Speed: HIGH
 Temperature:25.2℃
 Operators:Dano
 Test Date:2023-05-13

γ Range: 0 - 180DEG
 γ Interval: 1.0DEG
 Test System:EVERFINE GO-R5000_V2 SYSTEM V2.00.459
 Humidity:55.3%
 Test Distance:2.900m [K=0.8810]
 Remarks:

LUMINANCE LIMITATION CURVES

Test:U:120.1V I:0.2014A P:24.03W PF:0.9934 Freq:60.01Hz Lamp Flux:1103.83x1 lm		
NAME: PT27-4-3x8S-952C5-MVTD-BK 5000K	TYPE:	WEIGHT:
SPEC.:	DIM.:	SERIAL No.:
MFR.: FOSHAN LEDKEY LIGHTING CO.,LTD.	SUR.:	Shielding Angle:



LUMINANCE cd/(m2)		
G (DEG)	C0/180	C90/270
85	30871	32827
80	15187	17083
75	9887	11451
70	7180	8485
65	5518	6649
60	4378	5374
55	3537	4420
50	2880	3664
45	2348	3045

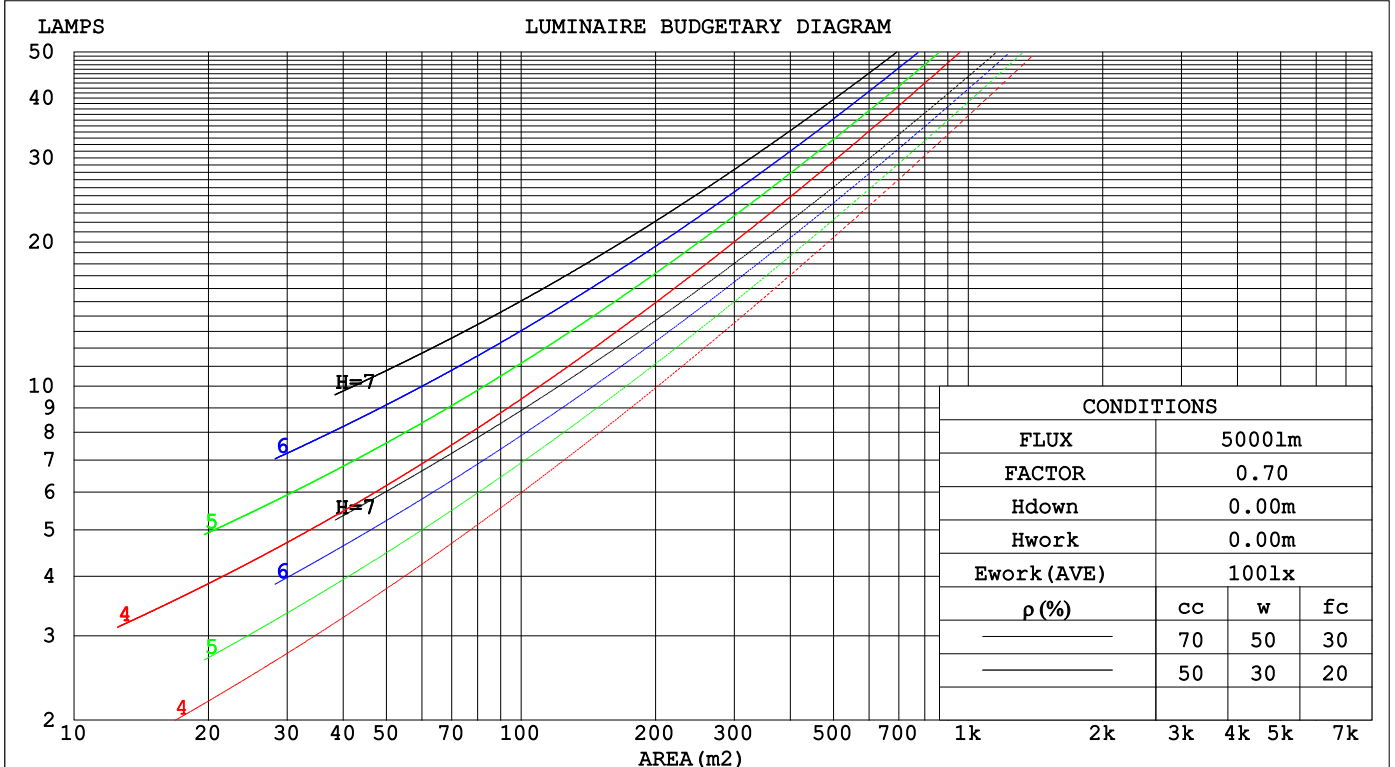
C Range: 0 - 360DEG
 C Interval: 22.5DEG
 Test Speed: HIGH
 Temperature:25.2℃
 Operators:Dano
 Test Date:2023-05-13

γ Range: 0 - 180DEG
 γ Interval: 1.0DEG
 Test System:EVERFINE GO-R5000_V2 SYSTEM V2.00.459
 Humidity:55.3%
 Test Distance:2.900m [K=0.8810]
 Remarks:

CU AND LUMINAIRE BUDGETARY ESTIMATE DIAGRAM

Test:U:120.1V I:0.2014A P:24.03W PF:0.9934 Freq:60.01Hz Lamp Flux:1103.83x1 lm		
NAME: PT27-4-3x8S-952C5-MVTD-BK 5000K	TYPE:	WEIGHT:
SPEC.:	DIM.:	SERIAL No.:
MFR.: FOSHAN LEDKEY LIGHTING CO.,LTD.	SUR.:	Shielding Angle:

ρ_{cc}	80%			70%			50%			30%			10%			0
ρ_w	50%	30%	10%	50%	30%	10%	50%	30%	10%	50%	30%	10%	50%	30%	10%	0
ρ_{fc}	20%			20%			20%			20%			20%			0
RCR	RCR:Room Cavity Ratio						Coefficients of Utilization(CU)									
0.0	1.07	1.07	1.07	.99	.99	.99	.84	.84	.84	.70	.70	.70	.57	.57	.57	.51
1.0	.85	.79	.73	.78	.72	.68	.65	.60	.56	.52	.49	.46	.41	.39	.36	.31
2.0	.71	.62	.55	.65	.57	.51	.53	.47	.42	.43	.38	.34	.33	.29	.26	.21
3.0	.60	.51	.43	.55	.46	.40	.45	.38	.33	.36	.30	.26	.27	.23	.20	.15
4.0	.52	.42	.35	.48	.39	.32	.39	.32	.26	.31	.25	.21	.23	.19	.15	.11
5.0	.46	.36	.29	.42	.33	.26	.34	.27	.21	.27	.21	.17	.20	.16	.12	.09
6.0	.40	.31	.24	.37	.28	.22	.30	.23	.18	.24	.18	.14	.18	.13	.10	.07
7.0	.36	.27	.20	.33	.24	.19	.27	.20	.15	.21	.16	.12	.16	.12	.08	.06
8.0	.32	.23	.17	.30	.22	.16	.24	.18	.13	.19	.14	.10	.14	.10	.07	.05
9.0	.29	.21	.15	.27	.19	.14	.22	.16	.11	.17	.12	.09	.13	.09	.06	.04
10.0	.27	.19	.13	.24	.17	.12	.20	.14	.10	.16	.11	.08	.12	.08	.05	.03



C Range: 0 - 360DEG
 C Interval: 22.5DEG
 Test Speed: HIGH
 Temperature:25.2°C
 Operators:Dano
 Test Date:2023-05-13

γ Range: 0 - 180DEG
 γ Interval: 1.0DEG
 Test System:EVERFINE GO-R5000_V2 SYSTEM V2.00.459
 Humidity:55.3%
 Test Distance:2.900m [K=0.8810]
 Remarks:

WEC AND CCEC

Test:U:120.1V I:0.2014A P:24.03W PF:0.9934 Freq:60.01Hz Lamp Flux:1103.83x1 lm		
NAME: PT27-4-3x8S-952C5-MVTD-BK 5000K	TYPE:	WEIGHT:
SPEC.:	DIM.:	SERIAL No.:
MFR.: FOSHAN LEDKEY LIGHTING CO.,LTD.	SUR.:	Shielding Angle:

ρcc	80%			70%			50%			30%			10%			0
ρw	50%	30%	10%	50%	30%	10%	50%	30%	10%	50%	30%	10%	50%	30%	10%	0
ρfc	20%			20%			20%			20%			20%			0
RCR	RCR:Room Cavity Ratio						Wall Exitance Coefficients(WEC)									
0.0																
1.0	.446	.254	.080	.424	.242	.077	.383	.220	.070	.345	.199	.064	.310	.180	.058	
2.0	.366	.201	.062	.346	.191	.059	.308	.171	.053	.273	.153	.048	.241	.136	.043	
3.0	.316	.168	.050	.298	.159	.048	.263	.143	.043	.231	.127	.039	.201	.111	.034	
4.0	.279	.145	.043	.262	.137	.041	.231	.122	.037	.201	.108	.033	.174	.094	.029	
5.0	.250	.128	.037	.235	.121	.035	.206	.107	.032	.178	.094	.028	.153	.082	.025	
6.0	.227	.114	.033	.213	.108	.031	.186	.095	.028	.161	.084	.025	.137	.072	.021	
7.0	.208	.103	.029	.195	.097	.028	.170	.086	.025	.146	.075	.022	.124	.065	.019	
8.0	.192	.094	.026	.179	.088	.025	.156	.078	.022	.134	.068	.020	.114	.059	.017	
9.0	.178	.086	.024	.166	.081	.023	.145	.072	.020	.124	.062	.018	.105	.053	.015	
10.0	.165	.079	.022	.155	.075	.021	.135	.066	.019	.116	.057	.016	.098	.049	.014	

ρcc	80%			70%			50%			30%			10%			0
ρw	50%	30%	10%	50%	30%	10%	50%	30%	10%	50%	30%	10%	50%	30%	10%	0
ρfc	20%			20%			20%			20%			20%			0
RCR	RCR:Room Cavity Ratio						Ceiling Cavity Exitance Coefficients(CCEC)									
0.0	.561	.561	.561	.479	.479	.479	.327	.327	.327	.188	.188	.188	.060	.060	.060	
1.0	.563	.528	.497	.482	.453	.427	.329	.312	.296	.190	.180	.172	.061	.058	.056	
2.0	.558	.507	.465	.478	.437	.402	.327	.302	.280	.189	.176	.164	.061	.057	.054	
3.0	.551	.492	.445	.472	.425	.386	.324	.295	.271	.187	.172	.160	.060	.056	.052	
4.0	.544	.481	.433	.466	.416	.376	.321	.290	.265	.186	.170	.157	.060	.055	.052	
5.0	.536	.472	.425	.460	.408	.370	.317	.285	.261	.184	.168	.155	.059	.055	.051	
6.0	.529	.465	.419	.454	.403	.365	.313	.282	.258	.182	.166	.153	.059	.054	.051	
7.0	.522	.459	.415	.449	.398	.361	.310	.279	.256	.180	.164	.152	.058	.054	.050	
8.0	.515	.454	.411	.443	.393	.359	.307	.276	.254	.178	.163	.152	.058	.053	.050	
9.0	.509	.449	.409	.438	.390	.357	.304	.274	.253	.177	.162	.151	.057	.053	.050	
10.0	.503	.445	.407	.433	.387	.355	.301	.272	.252	.175	.161	.151	.057	.053	.050	

C Range: 0 - 360DEG
 C Interval: 22.5DEG
 Test Speed: HIGH
 Temperature:25.2℃
 Operators:Dano
 Test Date:2023-05-13

γ Range: 0 - 180DEG
 γ Interval: 1.0DEG
 Test System:EVERFINE GO-R5000_V2 SYSTEM V2.00.459
 Humidity:55.3%
 Test Distance:2.900m [K=0.8810]
 Remarks:

UGR(Unified Glare Rating) Table

Test:U:120.1V I:0.2014A P:24.03W PF:0.9934 Freq:60.01Hz										
Lamp Flux:1103.83x1 lm										
NAME: PT27-4-3x8S-952C5-MVTD-BK 5000K					TYPE:			WEIGHT:		
SPEC.:					DIM.:			SERIAL No.:		
MFR.: FOSHAN LEDKEY LIGHTING CO.,LTD.					SUR.:			Shielding Angle:		
ceiling/cavity	0.7	0.7	0.5	0.5	0.3	0.7	0.7	0.5	0.5	0.3
walls	0.5	0.3	0.5	0.3	0.3	0.5	0.3	0.5	0.3	0.3
working plane	0.2	0.2	0.2	0.2	0.2	0.2	0.2	0.2	0.2	0.2
Room dimensions	Viewed crosswise					Viewed endwise				
x = 2H y = 2H	9.9	12.1	11.6	13.9	16.3	13.2	15.4	15.0	17.3	19.7
3H	14.0	16.1	15.8	17.9	20.4	16.9	18.9	18.6	20.8	23.2
4H	16.2	18.1	18.0	20.0	22.5	18.7	20.6	20.5	22.5	25.0
6H	18.6	20.4	20.4	22.3	24.8	20.7	22.5	22.5	24.4	26.9
8H	19.9	21.6	21.7	23.6	26.1	21.7	23.5	23.6	25.4	27.9
12H	21.3	23.0	23.2	25.0	27.5	22.9	24.6	24.7	26.5	29.0
4H 2H	10.5	12.5	12.4	14.4	16.8	13.4	15.4	15.3	17.3	19.7
3H	14.6	16.3	16.5	18.3	20.8	17.4	19.1	19.2	21.0	23.5
4H	16.9	18.4	18.7	20.4	22.9	19.5	21.1	21.4	23.0	25.6
6H	19.4	20.8	21.3	22.8	25.3	21.7	23.2	23.7	25.1	27.7
8H	20.8	22.1	22.7	24.1	26.7	22.9	24.2	24.8	26.2	28.8
12H	22.3	23.6	24.3	25.6	28.2	24.2	25.4	26.1	27.4	30.1
8H 4H	17.3	18.7	19.3	20.7	23.3	19.8	21.1	21.7	23.1	25.7
6H	20.0	21.1	22.0	23.2	25.8	22.4	23.5	24.4	25.6	28.2
8H	21.5	22.6	23.5	24.6	27.3	23.8	24.8	25.8	26.9	29.5
12H	23.3	24.2	25.3	26.3	29.0	25.4	26.3	27.4	28.4	31.1
12H 4H	17.5	18.7	19.4	20.7	23.3	19.9	21.1	21.8	23.1	25.7
6H	20.2	21.3	22.2	23.3	26.0	22.5	23.6	24.5	25.6	28.3
8H	21.8	22.8	23.8	24.8	27.5	24.1	25.0	26.1	27.1	29.8
CIE190: 2010										

CIE190: 2010
Area: 0.0494 m2

C Range: 0 - 360DEG
C Interval: 22.5DEG
Test Speed: HIGH
Temperature:25.2℃
Operators:Dano
Test Date:2023-05-13

γ Range: 0 - 180DEG
γ Interval: 1.0DEG
Test System:EVERFINE GO-R5000_V2 SYSTEM V2.00.459
Humidity:55.3%
Test Distance:2.900m [K=0.8810]
Remarks:

UTILIZATION FACTORS TABLE

Test:U:120.1V I:0.2014A P:24.03W PF:0.9934 Freq:60.01Hz Lamp Flux:1103.83x1 lm		
NAME: PT27-4-3x8S-952C5-MVTD-BK 5000K	TYPE:	WEIGHT:
SPEC.:	DIM.:	SERIAL No.:
MFR.: FOSHAN LEDKEY LIGHTING CO.,LTD.	SUR.:	Shielding Angle:

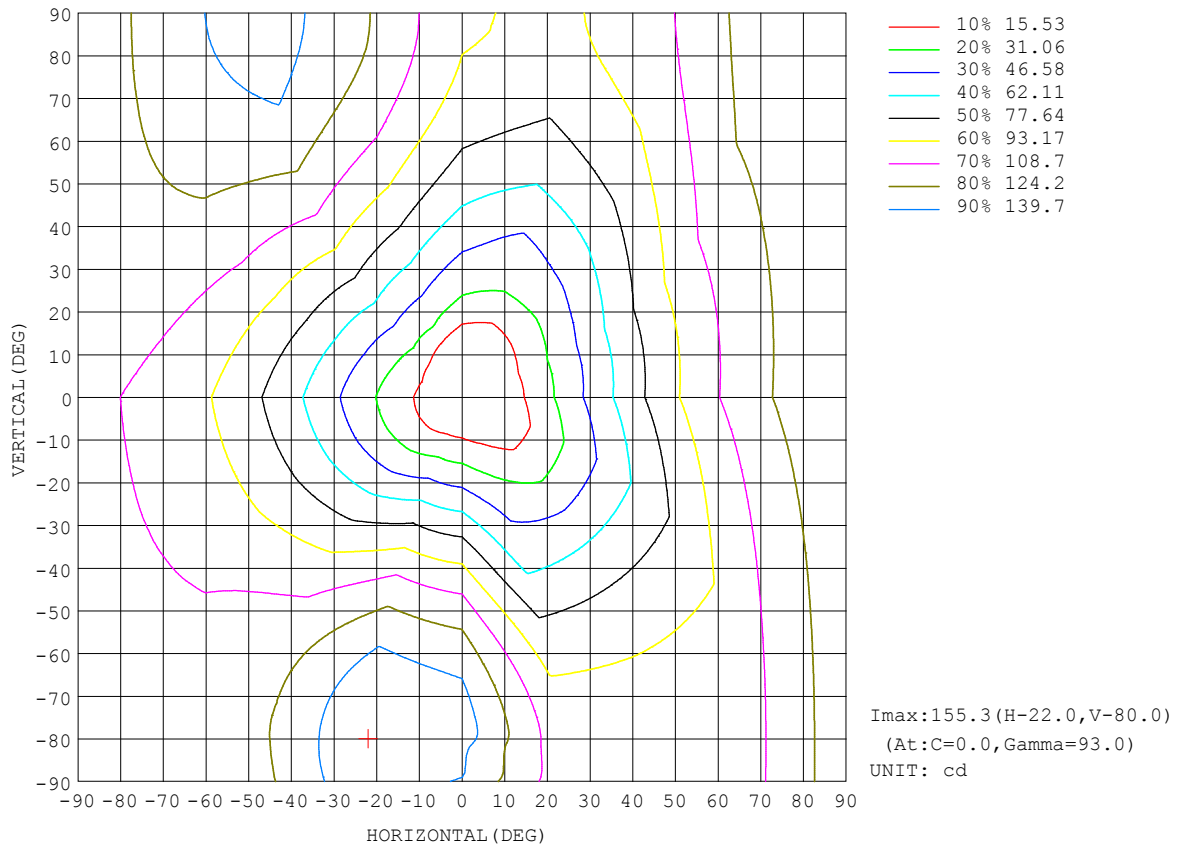
REFLECTANCE										
Ceiling	0.8	0.8	0.8	0.7	0.7	0.7	0.5	0.5	0.5	0
Walls	0.7	0.5	0.3	0.7	0.5	0.3	0.7	0.5	0.3	0
Working plane	0.2	0.2	0.2	0.2	0.2	0.2	0.2	0.2	0.2	0
ROOM INDEX	UTILIZATION FACTORS (PERCENT) $k(RI) \times RCR = 5$									
k = 0.60	33	20	13	32	19	12	28	18	11	4
0.80	42	27	18	39	26	18	34	23	16	6
1.00	49	34	24	46	32	23	40	30	21	9
1.25	56	41	31	52	38	29	45	33	26	12
1.50	61	46	36	57	43	34	48	38	30	14
2.00	69	55	45	64	52	42	54	44	37	19
2.50	75	62	52	69	57	48	58	49	42	22
3.00	79	67	57	73	62	53	61	53	46	25
4.00	84	74	65	78	69	61	66	58	52	29
5.00	88	79	71	81	73	66	68	62	57	31
ROOM INDEX	UF(total)									Direct
According to DIN EN 13032-2 2004			Suspended				SHRNOM = 1.25			

C Range: 0 - 360DEG
 C Interval: 22.5DEG
 Test Speed: HIGH
 Temperature:25.2°C
 Operators:Dano
 Test Date:2023-05-13

γ Range: 0 - 180DEG
 γ Interval: 1.0DEG
 Test System:EVERFINE GO-R5000_V2 SYSTEM V2.00.459
 Humidity:55.3%
 Test Distance:2.900m [K=0.8810]
 Remarks:

ISOCANDELA DIAGRAM

Test:U:120.1V I:0.2014A P:24.03W PF:0.9934 Freq:60.01Hz Lamp Flux:1103.83x1 lm		
NAME: PT27-4-3x8S-952C5-MVTD-BK 5000K	TYPE:	WEIGHT:
SPEC.:	DIM.:	SERIAL No.:
MFR.: FOSHAN LEDKEY LIGHTING CO.,LTD.	SUR.:	Shielding Angle:

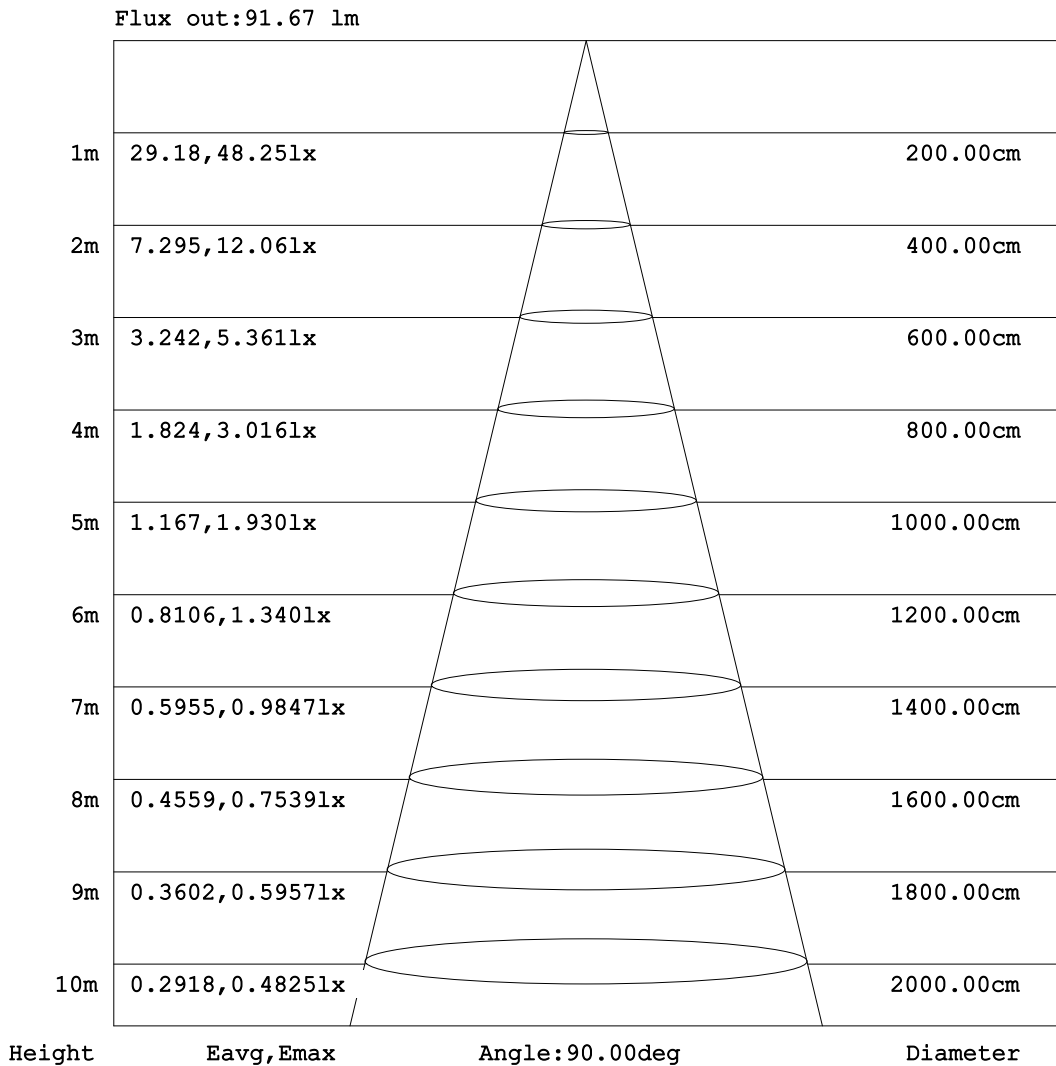


C Range: 0 - 360DEG
C Interval: 22.5DEG
Test Speed: HIGH
Temperature:25.2°C
Operators:Dano
Test Date:2023-05-13

γ Range: 0 - 180DEG
γ Interval: 1.0DEG
Test System:EVERFINE GO-R5000_V2 SYSTEM V2.00.459
Humidity:55.3%
Test Distance:2.900m [K=0.8810]
Remarks:

AAI Figure

Test:U:120.1V I:0.2014A P:24.03W PF:0.9934 Freq:60.01Hz Lamp Flux:1103.83x1 lm		
NAME: PT27-4-3x8S-952C5-MVTD-BK 5000K	TYPE:	WEIGHT:
SPEC.:	DIM.:	SERIAL No.:
MFR.: FOSHAN LEDKEY LIGHTING CO.,LTD.	SUR.:	Shielding Angle:



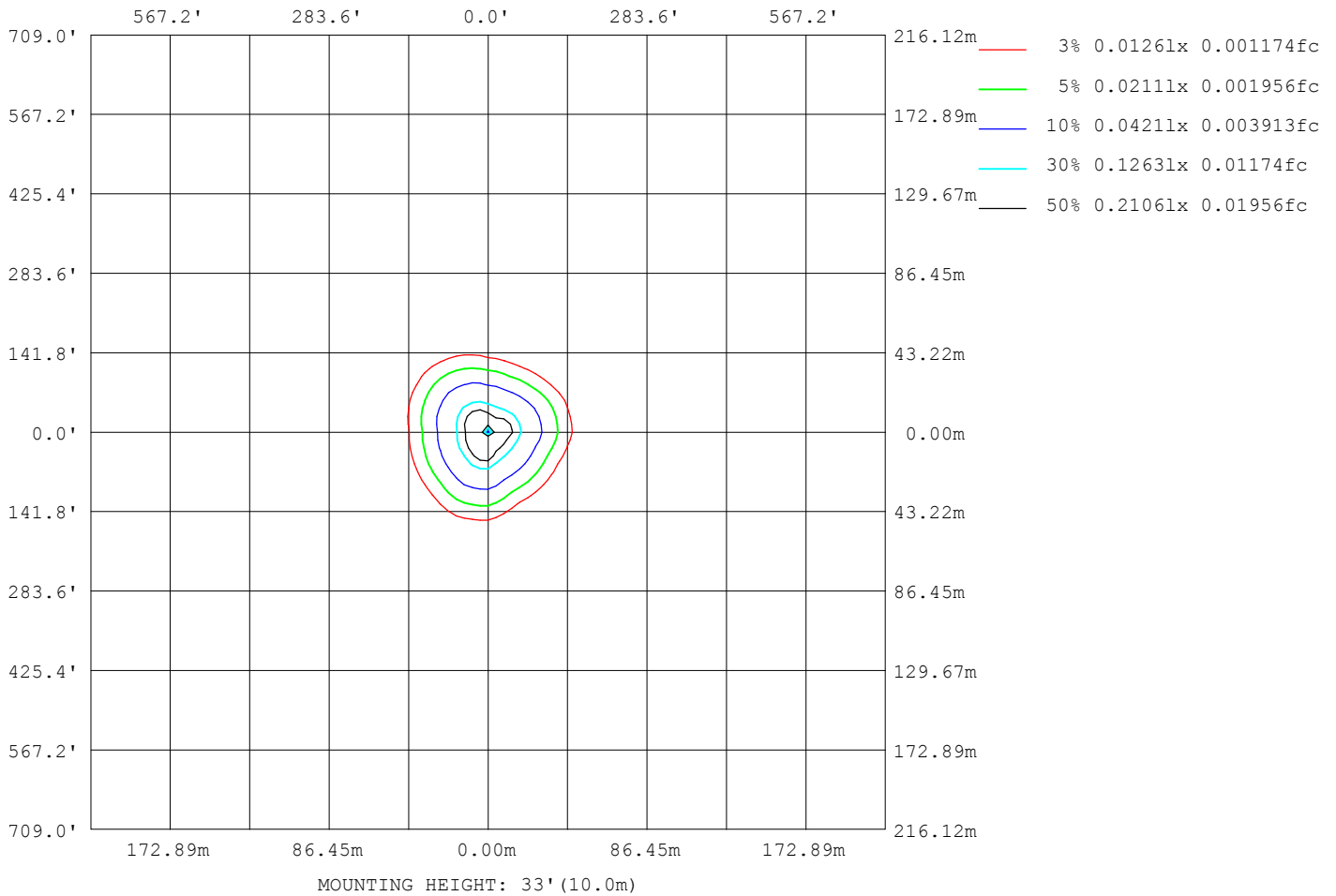
Note:The Curves indicate the illuminated area and the average illumination when the luminaire is at different distance.

C Range: 0 - 360DEG
 C Interval: 22.5DEG
 Test Speed: HIGH
 Temperature:25.2°C
 Operators:Dano
 Test Date:2023-05-13

γ Range: 0 - 180DEG
 γ Interval: 1.0DEG
 Test System:EVERFINE GO-R5000_V2 SYSTEM V2.00.459
 Humidity:55.3%
 Test Distance:2.900m [K=0.8810]
 Remarks:

ISOLUX DIAGRAM

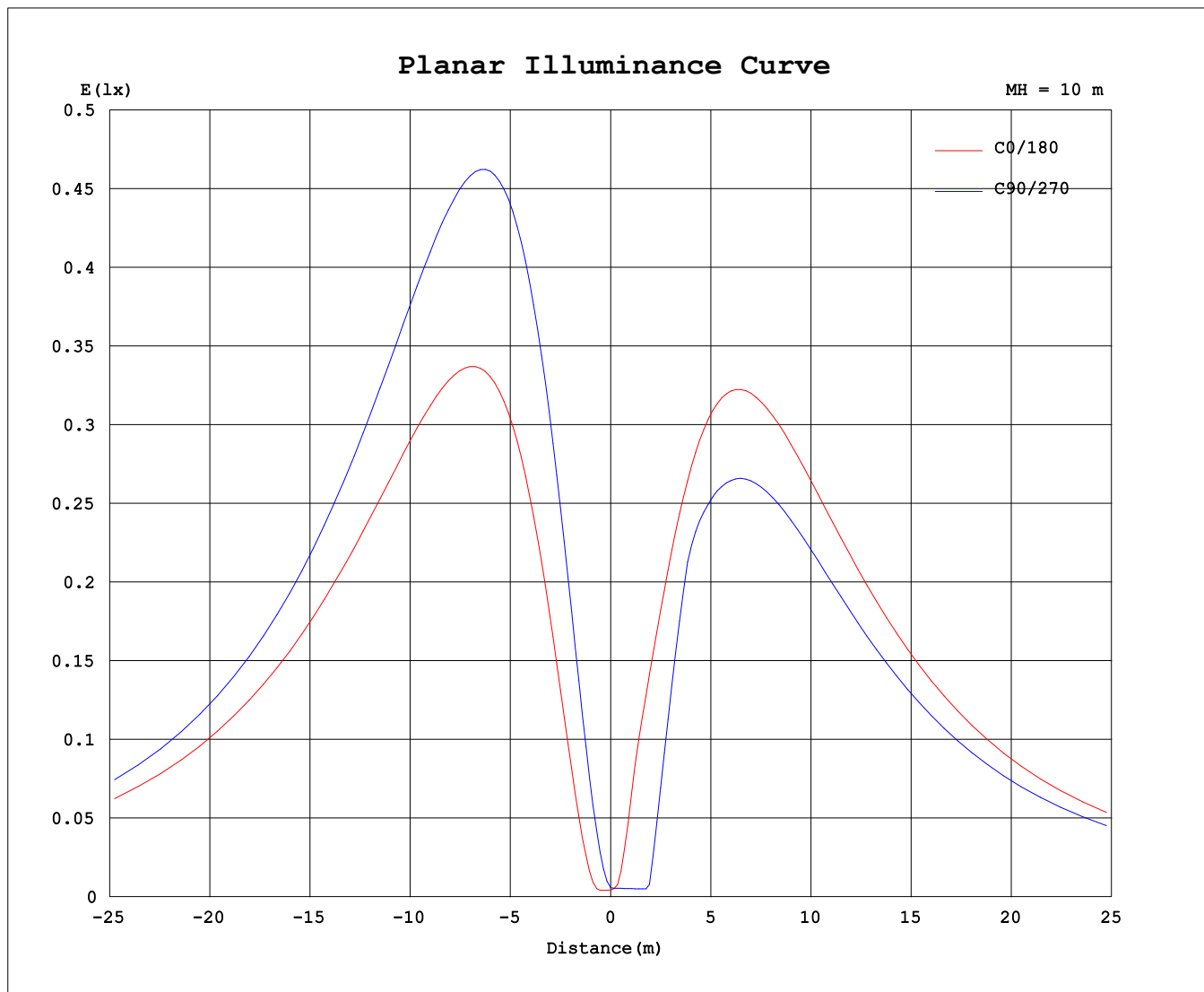
Test:U:120.1V I:0.2014A P:24.03W PF:0.9934 Freq:60.01Hz Lamp Flux:1103.83x1 lm		
NAME: PT27-4-3x8S-952C5-MVTD-BK 5000K	TYPE:	WEIGHT:
SPEC.:	DIM.:	SERIAL No.:
MFR.: FOSHAN LEDKEY LIGHTING CO.,LTD.	SUR.:	Shielding Angle:



C Range: 0 - 360DEG
 C Interval: 22.5DEG
 Test Speed: HIGH
 Temperature:25.2°C
 Operators:Dano
 Test Date:2023-05-13

γ Range: 0 - 180DEG
 γ Interval: 1.0DEG
 Test System:EVERFINE GO-R5000_V2 SYSTEM V2.00.459
 Humidity:55.3%
 Test Distance:2.900m [K=0.8810]
 Remarks:

Planar Illuminance Curve



C Range: 0 - 360DEG
C Interval: 22.5DEG
Test Speed: HIGH
Temperature: 25.2°C
Operators: Dano
Test Date: 2023-05-13

γ Range: 0 - 180DEG
γ Interval: 1.0DEG
Test System: EVERFINE GO-R5000_V2 SYSTEM V2.00.459
Humidity: 55.3%
Test Distance: 2.900m [K=0.8810]
Remarks:

LUMINOUS DISTRIBUTION INTENSITY DATA

Test:U:120.1V I:0.2014A P:24.03W PF:0.9934 Freq:60.01Hz Lamp Flux:1103.83x1 lm		
NAME: PT27-4-3x8S-952C5-MVTD-BK 5000K	TYPE:	WEIGHT:
SPEC.:	DIM.:	SERIAL No.:
MFR.: FOSHAN LEDKEY LIGHTING CO.,LTD.	SUR.:	Shielding Angle:

Table--1

UNIT: cd

C (DEG) γ (DEG)	0	22.5	45	67.5	90	112.5	135	157.5	180	202.5	225	247.5	270	292.5	315	337.5			
0	0.55	0.55	0.55	0.55	0.55	0.55	0.55	0.55	0.55	0.55	0.55	0.55	0.55	0.55	0.55	0.55			
5	1.18	0.96	2.42	4.23	5.37	5.55	5.38	5.44	5.82	3.67	0.77	0.48	0.49	0.52	0.73	1.07			
10	8.37	5.22	6.56	11.7	15.2	15.7	13.8	13.4	16.2	17.3	13.1	5.25	0.49	1.56	4.74	7.15			
15	20.0	13.0	12.9	20.7	27.0	28.2	24.3	22.6	26.3	28.8	29.5	20.1	9.22	7.18	12.0	16.7			
20	33.4	22.5	20.4	29.5	39.5	41.2	35.3	32.6	37.2	40.5	41.3	34.0	21.3	17.0	20.4	26.9			
25	47.2	32.8	28.7	37.2	52.0	54.3	46.5	42.9	48.5	52.3	53.2	43.6	29.9	25.9	29.2	36.9			
30	61.0	43.1	38.3	43.4	64.2	67.1	57.4	53.1	59.7	64.1	65.0	53.1	36.8	32.6	37.5	47.3			
35	74.4	53.3	48.1	48.8	75.7	79.3	67.8	62.8	70.7	75.6	76.4	62.3	43.7	36.7	44.7	57.7			
40	87.3	63.0	57.7	54.5	86.6	90.8	77.4	71.9	81.1	86.7	87.4	71.0	50.4	41.6	52.2	67.9			
45	99.5	72.0	66.7	61.3	96.6	101	86.3	80.2	90.8	97.3	98.0	79.3	56.7	47.5	59.6	77.5			
50	111	80.4	74.8	68.7	106	111	94.2	87.6	99.7	107	108	87.0	62.4	54.1	66.6	86.7			
55	122	88.1	82.2	75.7	114	120	101	94.0	108	117	117	94.1	67.5	59.8	73.0	95.0			
60	131	95.0	88.5	81.9	121	127	107	99.4	115	125	126	100	72.2	64.7	78.7	103			
65	140	101	93.9	87.2	126	133	112	104	121	133	134	106	76.2	69.1	83.8	110			
70	147	106	98.2	91.4	130	137	115	107	126	139	140	111	79.7	72.9	88.1	115			
75	153	110	101	94.6	133	140	117	109	129	144	146	115	82.5	76.2	91.8	120			
80	158	113	104	96.7	133	141	118	110	132	149	150	118	84.6	79.1	94.5	124			
85	161	115	105	97.5	128	141	118	110	133	151	152	119	86.0	80.9	96.4	127			
90	163	116	105	97.0	125	139	116	109	133	152	154	120	86.4	81.6	97.4	128			
95	163	116	103	94.1	114	136	113	106	132	152	153	119	86.5	81.2	97.5	128			
100	161	115	101	90.3	100	131	109	103	129	150	151	118	85.6	80.1	96.7	126			
105	158	113	97.4	85.5	105	125	105	98.7	125	147	147	115	83.8	78.6	95.0	124			
110	153	110	93.1	80.1	104	118	98.9	93.5	120	142	142	111	81.2	76.9	92.5	120			
115	147	106	88.1	74.1	98.9	110	92.5	87.2	114	136	136	106	77.9	74.2	89.2	115			
120	139	101	82.2	67.6	92.4	102	85.3	80.0	106	128	128	100	73.8	70.7	85.0	109			
125	131	95.0	75.7	60.9	84.7	92.3	77.7	72.2	97.9	119	119	93.5	69.0	66.2	80.1	103			
130	121	88.2	68.5	53.8	76.2	82.5	69.5	63.8	88.5	109	110	85.9	63.4	60.9	74.5	94.9			
135	110	80.8	60.7	46.5	67.1	72.5	61.0	55.0	78.4	98.2	98.7	77.7	57.3	55.0	68.1	86.4			
140	98.9	72.6	52.5	39.0	57.6	62.1	52.1	45.8	67.6	86.0	87.1	69.0	50.6	48.6	60.8	77.2			
145	86.8	63.8	44.1	31.5	47.7	51.6	42.9	36.5	56.4	72.4	74.8	60.3	43.5	41.7	52.2	67.2			
150	74.1	54.5	35.7	24.1	37.6	40.8	33.7	27.2	45.2	57.5	61.8	51.2	36.4	34.5	42.6	56.5			
155	60.8	44.7	27.3	17.3	27.7	30.2	24.5	18.3	34.3	42.0	47.9	41.5	29.5	26.8	32.5	45.1			
160	47.2	34.7	19.8	11.5	18.0	19.8	15.7	10.4	23.9	27.3	33.7	30.7	22.1	19.3	22.9	33.5			
165	33.5	24.6	13.4	6.75	9.29	10.4	7.90	3.97	14.3	15.0	20.3	19.4	14.2	12.0	14.8	23.0			
170	20.1	14.9	8.30	3.09	2.52	3.03	2.07	0.46	5.93	5.92	9.10	9.04	6.51	3.71	7.28	13.5			
175	8.56	6.65	4.12	1.76	0.41	0.17	0.18	0.19	0.49	0.50	1.13	1.18	0.29	0.18	0.24	1.99			
180	0.00	0.00	0.00	0.00	0.08	0.16	0.17	0.15	0.16	0.15	0.16	0.15	0.16	0.16	0.17	0.17			

C Range: 0 - 360DEG
 C Interval: 22.5DEG
 Test Speed: HIGH
 Temperature:25.2℃
 Operators:Dano
 Test Date:2023-05-13

γ Range: 0 - 180DEG
 γ Interval: 1.0DEG
 Test System:EVERFINE GO-R5000_V2 SYSTEM V2.00.459
 Humidity:55.3%
 Test Distance:2.900m [K=0.8810]
 Remarks: