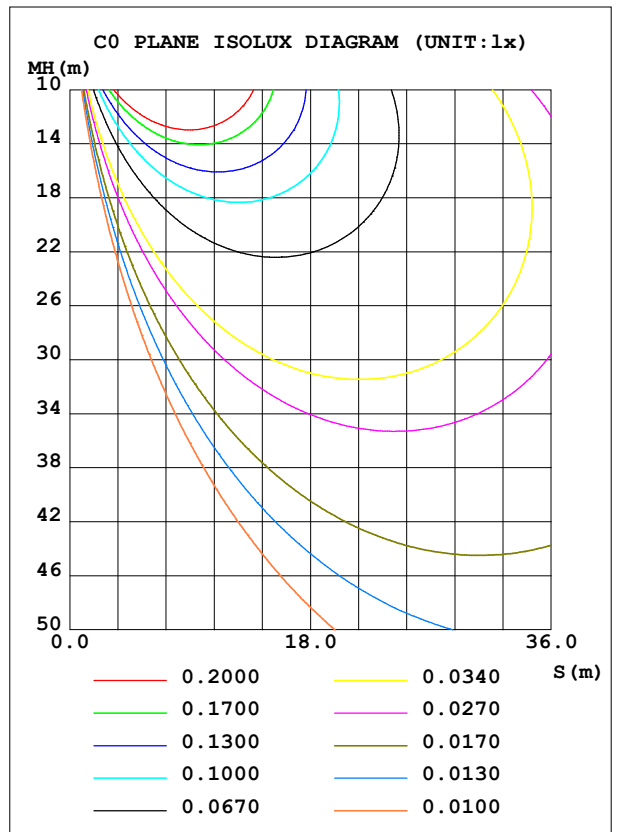
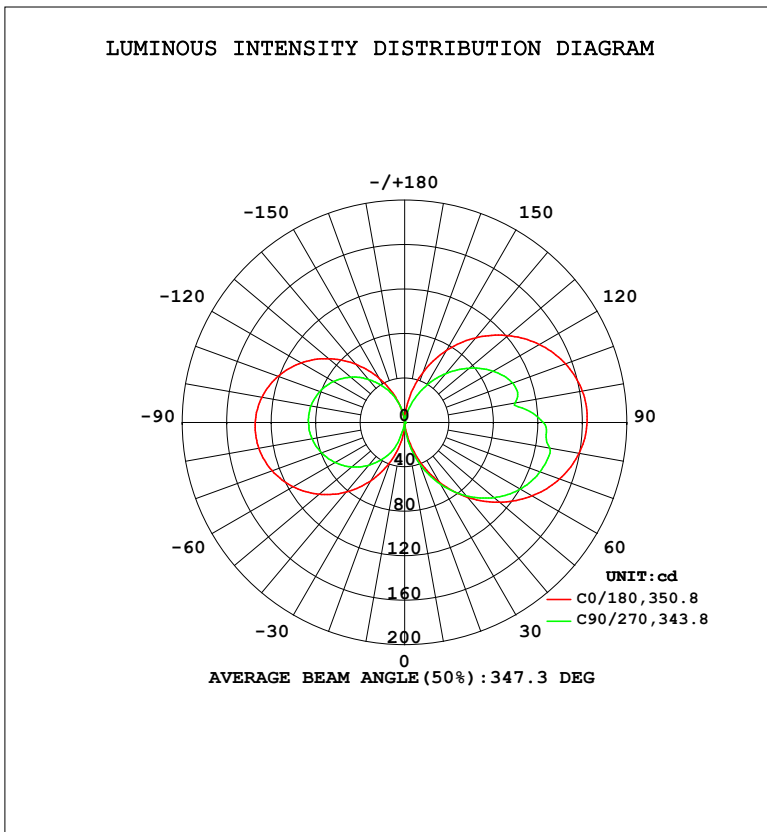


LUMINAIRE PHOTOMETRIC TEST REPORT

Test:U:120.0V I:0.2030A P:24.21W PF:0.9935 Freq:60.01Hz Lamp Flux:1102.26x1 lm		
NAME: PT27-4-3x8S-952C5-MVTD-BK 4000K	TYPE:	WEIGHT:
SPEC.:	DIM.:	SERIAL No.:
MFR.: FOSHAN LEDKEY LIGHTING CO.,LTD.	SUR.:	Shielding Angle:

DATA OF LAMP		PHOTOMETRIC DATA				Eff: 45.54 lm/W
MODEL		I _{max} (cd)	164.4	S/MH (C0/180)	14.17	
NOMINAL POWER (W)		LOR (%)	100.0	S/MH (C90/270)	12.04	
RATED VOLTAGE (V)	120	TOTAL FLUX (lm)	1102.3	η UP, DN (C0-180)	23.5, 26.7	
NOMINAL FLUX (lm)	1102.26	CIE CLASS	DIFFUSE	η UP, DN (C180-360)	25.0, 24.7	
LAMPS INSIDE	1	η up (%)	48.6	CIBSE SHR NOM	1.25	
TEST VOLTAGE (V)	120	η down (%)	51.4	CIBSE SHR MAX	1.35	



C Range: 0 - 360DEG
 C Interval: 22.5DEG
 Test Speed: HIGH
 Temperature: 25.2 °C
 Operators: Dano
 Test Date: 2023-05-13

γ Range: 0 - 180DEG
 γ Interval: 1.0DEG
 Test System: EVERFINE GO-R5000_V2 SYSTEM V2.00.459
 Humidity: 55.3%
 Test Distance: 2.900m [K=0.8810]
 Remarks:

ZONAL FLUX DIAGRAM

ZONAL FLUX DIAGRAM:

γ	C0	C45	C90	C135	C180	C225	C270	C315	γ	Φ zone	Φ total	%lum,lamp
10	8.489	6.514	15.09	13.66	16.34	13.24	0.4846	4.733	0- 10	0.4832	0.4832	0.04,0.04
20	33.62	20.25	39.41	34.95	37.51	41.33	22.04	20.21	10- 20	5.947	6.430	0.58,0.58
30	61.46	38.04	63.89	56.81	60.22	65.02	36.80	37.18	20- 30	19.26	25.69	2.33,2.33
40	87.92	57.43	86.23	76.57	81.73	87.48	50.42	51.85	30- 40	38.26	63.94	5.8,5.8
50	111.8	74.60	105.3	93.12	100.6	108.1	62.44	66.07	40- 50	61.04	125.0	11.3,11.3
60	132.3	88.10	120.2	105.7	115.9	126.1	72.26	78.12	50- 60	84.79	209.8	19,19
70	148.5	97.63	129.7	113.7	127.0	140.5	79.78	87.41	60- 70	106.0	315.8	28.6,28.6
80	159.5	103.1	132.6	116.8	133.3	150.0	84.65	93.63	70- 80	121.7	437.5	39.7,39.7
90	164.2	104.1	124.9	114.7	134.5	153.8	86.49	96.46	80- 90	129.3	566.8	51.4,51.4
100	162.4	100.2	100.5	108.2	130.6	151.3	85.72	95.79	90-100	127.2	694.1	63,63
110	154.1	92.62	103.5	97.82	121.4	142.7	81.38	91.59	100-110	117.3	811.4	73.6,73.6
120	140.3	81.70	92.26	84.36	107.5	128.6	73.94	84.12	110-120	100.9	912.3	82.8,82.8
130	121.7	68.03	76.09	68.73	89.47	109.7	63.56	73.80	120-130	79.36	991.7	90,90
140	99.48	52.22	57.47	51.49	68.46	87.29	50.68	60.13	130-140	55.99	1048	95,95
150	74.52	35.42	37.52	33.26	45.80	61.90	36.45	42.17	140-150	33.89	1082	98.1,98.1
160	47.45	19.62	17.95	15.46	24.19	33.73	22.15	22.69	150-160	15.89	1097	99.6,99.6
170	20.18	8.194	2.520	2.036	6.038	9.145	6.551	7.207	160-170	4.496	1102	100,100
180	0	0	0.0821	0.1725	0.1623	0.1630	0.1577	0.1716	170-180	0.3246	1102	100,100
DEG	LUMINOUS INTENSITY:cd									UNIT:lm		

Conical surface Flux(90deg): 91.468 lm

%lum = 8.3%

%lamp = 8.3%

Conical surface Flux(120deg): 209.77 lm

%lum = 19.0%

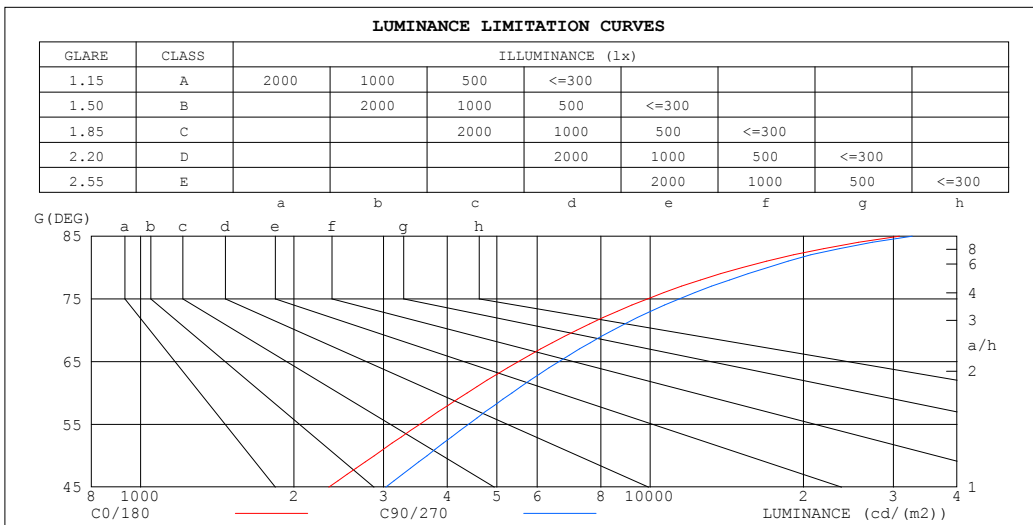
%lamp = 19.0%

C Range: 0 - 360DEG
 C Interval: 22.5DEG
 Test Speed: HIGH
 Temperature:25.2℃
 Operators:Dano
 Test Date:2023-05-13

γ Range: 0 - 180DEG
 γ Interval: 1.0DEG
 Test System:EVERFINE GO-R5000_V2 SYSTEM V2.00.459
 Humidity:55.3%
 Test Distance:2.900m [K=0.8810]
 Remarks:

LUMINANCE LIMITATION CURVES

Test:U:120.0V I:0.2030A P:24.21W PF:0.9935 Freq:60.01Hz Lamp Flux:1102.26x1 lm		
NAME: PT27-4-3x8S-952C5-MVTD-BK 4000K	TYPE:	WEIGHT:
SPEC.:	DIM.:	SERIAL No.:
MFR.: FOSHAN LEDKEY LIGHTING CO.,LTD.	SUR.:	Shielding Angle:



LUMINANCE cd/(m2)		
G (DEG)	C0/180	C90/270
85	30858	32689
80	15178	17000
75	9879	11400
70	7176	8447
65	5514	6621
60	4373	5354
55	3531	4400
50	2874	3648
45	2342	3030

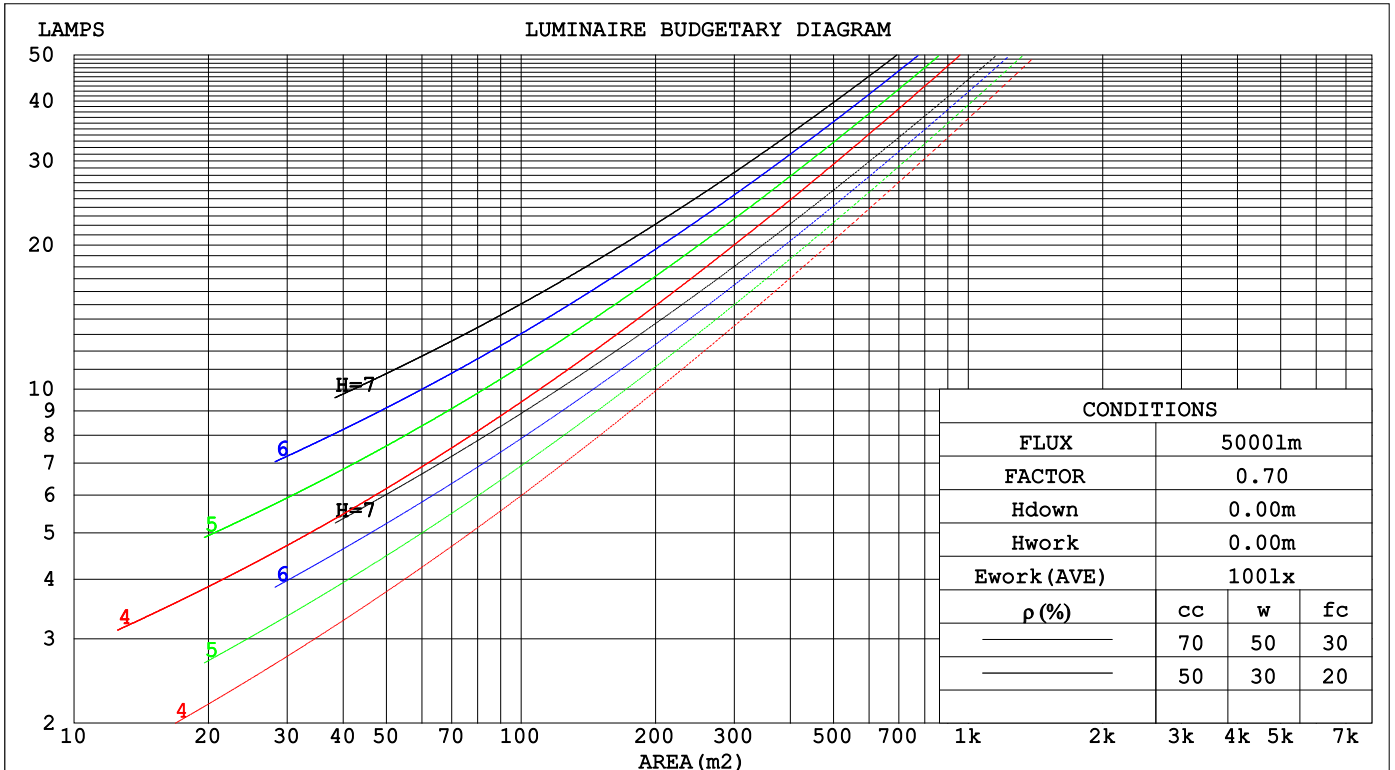
C Range: 0 - 360DEG
 C Interval: 22.5DEG
 Test Speed: HIGH
 Temperature:25.2℃
 Operators:Dano
 Test Date:2023-05-13

γ Range: 0 - 180DEG
 γ Interval: 1.0DEG
 Test System:EVERFINE GO-R5000_V2 SYSTEM V2.00.459
 Humidity:55.3%
 Test Distance:2.900m [K=0.8810]
 Remarks:

CU AND LUMINAIRE BUDGETARY ESTIMATE DIAGRAM

Test:U:120.0V I:0.2030A P:24.21W PF:0.9935 Freq:60.01Hz Lamp Flux:1102.26x1 lm		
NAME: PT27-4-3x8S-952C5-MVTD-BK 4000K	TYPE:	WEIGHT:
SPEC.:	DIM.:	SERIAL No.:
MFR.: FOSHAN LEDKEY LIGHTING CO.,LTD.	SUR.:	Shielding Angle:

ρ_{cc}	80%			70%			50%			30%			10%			0
ρ_w	50%	30%	10%	50%	30%	10%	50%	30%	10%	50%	30%	10%	50%	30%	10%	0
ρ_{fc}	20%			20%			20%			20%			20%			0
RCR	RCR:Room Cavity Ratio						Coefficients of Utilization(CU)									
0.0	1.07	1.07	1.07	.99	.99	.99	.84	.84	.84	.70	.70	.70	.57	.57	.57	.51
1.0	.85	.79	.73	.78	.72	.67	.65	.60	.56	.52	.49	.46	.41	.39	.36	.31
2.0	.71	.62	.55	.65	.57	.51	.53	.47	.42	.43	.38	.34	.33	.29	.26	.21
3.0	.60	.51	.43	.55	.46	.40	.45	.38	.33	.36	.30	.26	.27	.23	.20	.15
4.0	.52	.42	.35	.48	.39	.32	.39	.32	.26	.31	.25	.21	.23	.19	.15	.11
5.0	.46	.36	.29	.42	.33	.26	.34	.27	.21	.27	.21	.17	.20	.16	.12	.09
6.0	.40	.31	.24	.37	.28	.22	.30	.23	.18	.24	.18	.14	.18	.13	.10	.07
7.0	.36	.27	.20	.33	.24	.19	.27	.20	.15	.21	.16	.12	.16	.12	.08	.06
8.0	.32	.23	.17	.30	.22	.16	.24	.18	.13	.19	.14	.10	.14	.10	.07	.05
9.0	.29	.21	.15	.27	.19	.14	.22	.16	.11	.17	.12	.09	.13	.09	.06	.04
10.0	.27	.19	.13	.24	.17	.12	.20	.14	.10	.16	.11	.08	.12	.08	.05	.03



C Range: 0 - 360DEG
 C Interval: 22.5DEG
 Test Speed: HIGH
 Temperature:25.2°C
 Operators:Dano
 Test Date:2023-05-13

γ Range: 0 - 180DEG
 γ Interval: 1.0DEG
 Test System:EVERFINE GO-R5000_V2 SYSTEM V2.00.459
 Humidity:55.3%
 Test Distance:2.900m [K=0.8810]
 Remarks:

WEC AND CCEC

Test:U:120.0V I:0.2030A P:24.21W PF:0.9935 Freq:60.01Hz Lamp Flux:1102.26x1 lm		
NAME: PT27-4-3x8S-952C5-MVTD-BK 4000K	TYPE:	WEIGHT:
SPEC.:	DIM.:	SERIAL No.:
MFR.: FOSHAN LEDKEY LIGHTING CO.,LTD.	SUR.:	Shielding Angle:

ρcc	80%			70%			50%			30%			10%			0
ρw	50%	30%	10%	50%	30%	10%	50%	30%	10%	50%	30%	10%	50%	30%	10%	0
ρfc	20%			20%			20%			20%			20%			0
RCR	RCR:Room Cavity Ratio						Wall Exitance Coefficients(WEC)									
0.0																
1.0	.446	.254	.080	.424	.242	.077	.383	.220	.070	.345	.199	.064	.310	.180	.058	
2.0	.366	.201	.062	.346	.191	.059	.308	.171	.053	.273	.153	.048	.241	.136	.043	
3.0	.316	.168	.050	.298	.159	.048	.263	.143	.043	.231	.127	.039	.201	.111	.034	
4.0	.279	.145	.043	.262	.137	.041	.231	.122	.037	.201	.108	.033	.174	.094	.029	
5.0	.250	.128	.037	.235	.121	.035	.206	.107	.032	.178	.094	.028	.153	.082	.025	
6.0	.227	.114	.033	.213	.108	.031	.186	.095	.028	.161	.084	.025	.137	.072	.021	
7.0	.208	.103	.029	.195	.097	.028	.170	.086	.025	.146	.075	.022	.124	.065	.019	
8.0	.192	.094	.026	.179	.088	.025	.156	.078	.022	.134	.068	.020	.114	.059	.017	
9.0	.178	.086	.024	.166	.081	.023	.145	.072	.020	.124	.062	.018	.105	.053	.015	
10.0	.165	.079	.022	.155	.075	.021	.135	.066	.019	.116	.057	.016	.098	.049	.014	

ρcc	80%			70%			50%			30%			10%			0
ρw	50%	30%	10%	50%	30%	10%	50%	30%	10%	50%	30%	10%	50%	30%	10%	0
ρfc	20%			20%			20%			20%			20%			0
RCR	RCR:Room Cavity Ratio						Ceiling Cavity Exitance Coefficients(CCEC)									
0.0	.561	.561	.561	.479	.479	.479	.327	.327	.327	.188	.188	.188	.060	.060	.060	
1.0	.563	.528	.497	.482	.453	.427	.329	.312	.296	.190	.180	.172	.061	.058	.056	
2.0	.558	.507	.465	.478	.437	.402	.327	.302	.280	.189	.176	.164	.061	.057	.054	
3.0	.551	.492	.445	.472	.425	.386	.324	.295	.271	.187	.172	.160	.060	.056	.052	
4.0	.544	.481	.433	.466	.416	.376	.321	.290	.265	.186	.170	.157	.060	.055	.052	
5.0	.536	.472	.425	.460	.408	.370	.317	.285	.261	.184	.168	.155	.059	.055	.051	
6.0	.529	.465	.419	.454	.403	.365	.313	.282	.258	.182	.166	.153	.059	.054	.051	
7.0	.522	.459	.415	.449	.398	.361	.310	.279	.256	.180	.164	.152	.058	.054	.050	
8.0	.515	.454	.411	.443	.393	.359	.307	.276	.254	.178	.163	.152	.058	.053	.050	
9.0	.509	.449	.409	.438	.390	.357	.304	.274	.253	.177	.162	.151	.057	.053	.050	
10.0	.503	.445	.407	.433	.387	.355	.301	.272	.252	.175	.161	.151	.057	.053	.050	

C Range: 0 - 360DEG
 C Interval: 22.5DEG
 Test Speed: HIGH
 Temperature:25.2℃
 Operators:Dano
 Test Date:2023-05-13

γ Range: 0 - 180DEG
 γ Interval: 1.0DEG
 Test System:EVERFINE GO-R5000_V2 SYSTEM V2.00.459
 Humidity:55.3%
 Test Distance:2.900m [K=0.8810]
 Remarks:

UGR(Unified Glare Rating) Table

Test:U:120.0V I:0.2030A P:24.21W PF:0.9935 Freq:60.01Hz										
Lamp Flux:1102.26x1 lm										
NAME: PT27-4-3x8S-952C5-MVTD-BK 4000K					TYPE:			WEIGHT:		
SPEC.:					DIM.:			SERIAL No.:		
MFR.: FOSHAN LEDKEY LIGHTING CO.,LTD.					SUR.:			Shielding Angle:		
ceiling/cavity	0.7	0.7	0.5	0.5	0.3	0.7	0.7	0.5	0.5	0.3
walls	0.5	0.3	0.5	0.3	0.3	0.5	0.3	0.5	0.3	0.3
working plane	0.2	0.2	0.2	0.2	0.2	0.2	0.2	0.2	0.2	0.2
Room dimensions	Viewed crosswise					Viewed endwise				
x = 2H y = 2H	9.8	12.1	11.6	13.9	16.3	13.2	15.4	15.0	17.3	19.6
3H	14.0	16.0	15.8	17.9	20.4	16.8	18.9	18.6	20.7	23.2
4H	16.2	18.1	18.0	20.0	22.5	18.7	20.6	20.5	22.5	25.0
6H	18.6	20.4	20.4	22.3	24.8	20.7	22.5	22.5	24.4	26.9
8H	19.9	21.6	21.7	23.6	26.1	21.7	23.5	23.6	25.4	27.9
12H	21.3	23.0	23.2	25.0	27.5	22.8	24.5	24.7	26.5	29.0
4H 2H	10.5	12.5	12.3	14.3	16.8	13.4	15.4	15.2	17.2	19.7
3H	14.6	16.3	16.5	18.2	20.8	17.4	19.1	19.2	21.0	23.5
4H	16.8	18.4	18.7	20.4	22.9	19.5	21.0	21.4	23.0	25.6
6H	19.4	20.8	21.3	22.8	25.3	21.7	23.1	23.6	25.1	27.7
8H	20.7	22.1	22.7	24.1	26.7	22.9	24.2	24.8	26.2	28.8
12H	22.3	23.6	24.3	25.6	28.2	24.2	25.4	26.1	27.4	30.0
8H 4H	17.3	18.7	19.2	20.6	23.2	19.8	21.1	21.7	23.1	25.7
6H	20.0	21.1	22.0	23.2	25.8	22.4	23.5	24.3	25.6	28.2
8H	21.5	22.6	23.5	24.6	27.2	23.8	24.8	25.8	26.9	29.5
12H	23.3	24.2	25.3	26.3	29.0	25.4	26.3	27.4	28.4	31.1
12H 4H	17.5	18.7	19.4	20.7	23.3	19.8	21.1	21.8	23.1	25.7
6H	20.2	21.3	22.2	23.3	26.0	22.5	23.5	24.5	25.6	28.3
8H	21.8	22.8	23.8	24.8	27.5	24.1	25.0	26.1	27.0	29.7
CIE190: 2010										

CIE190: 2010
Area: 0.0494 m2

C Range: 0 - 360DEG
C Interval: 22.5DEG
Test Speed: HIGH
Temperature:25.2℃
Operators:Dano
Test Date:2023-05-13

γ Range: 0 - 180DEG
γ Interval: 1.0DEG
Test System:EVERFINE GO-R5000_V2 SYSTEM V2.00.459
Humidity:55.3%
Test Distance:2.900m [K=0.8810]
Remarks:

UTILIZATION FACTORS TABLE

Test:U:120.0V I:0.2030A P:24.21W PF:0.9935 Freq:60.01Hz Lamp Flux:1102.26x1 lm		
NAME: PT27-4-3x8S-952C5-MVTD-BK 4000K	TYPE:	WEIGHT:
SPEC.:	DIM.:	SERIAL No.:
MFR.: FOSHAN LEDKEY LIGHTING CO.,LTD.	SUR.:	Shielding Angle:

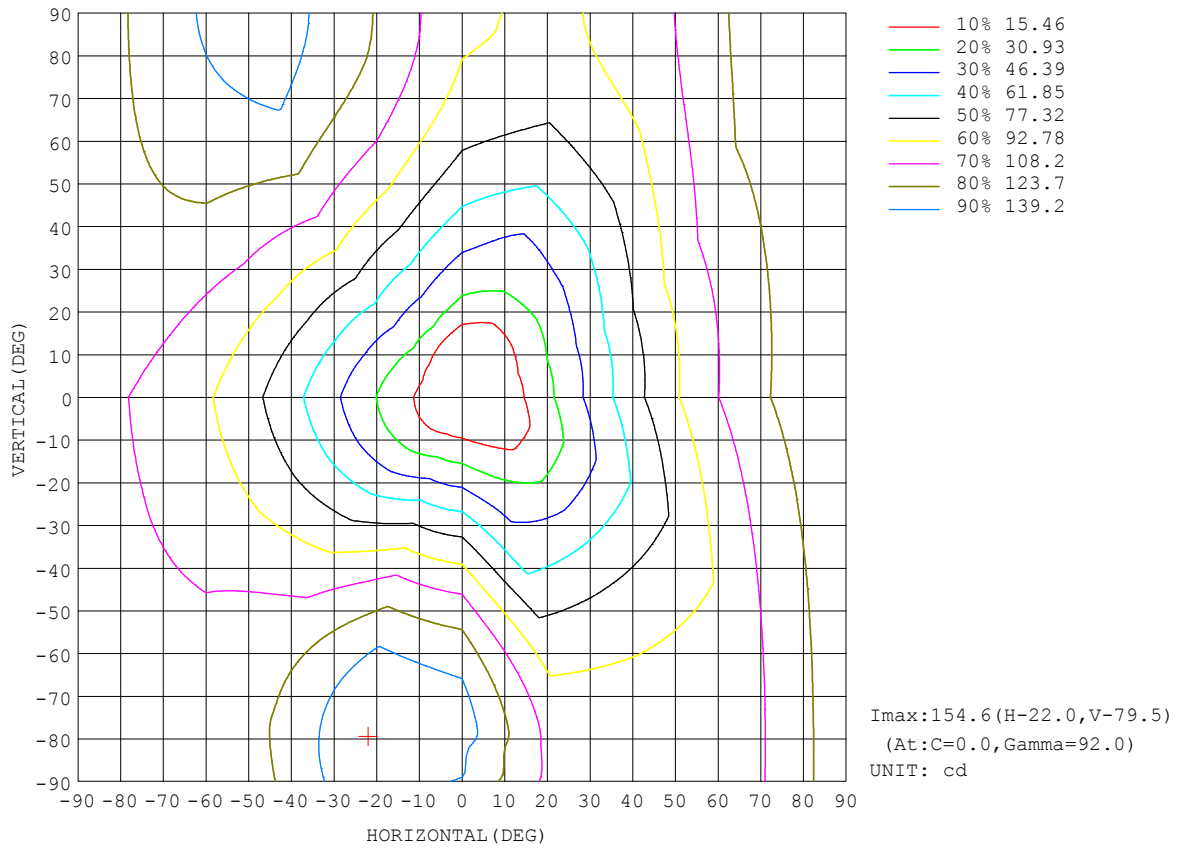
REFLECTANCE										
Ceiling	0.8	0.8	0.8	0.7	0.7	0.7	0.5	0.5	0.5	0
Walls	0.7	0.5	0.3	0.7	0.5	0.3	0.7	0.5	0.3	0
Working plane	0.2	0.2	0.2	0.2	0.2	0.2	0.2	0.2	0.2	0
ROOM INDEX	UTILIZATION FACTORS (PERCENT) $k(RI) \times RCR = 5$									
k = 0.60	33	20	13	32	19	12	28	18	11	4
0.80	42	27	18	39	26	18	34	23	16	6
1.00	49	34	24	46	32	23	40	30	21	9
1.25	56	41	31	52	38	29	45	33	26	12
1.50	61	46	36	57	43	34	48	38	30	14
2.00	69	55	45	64	52	42	54	44	37	19
2.50	75	62	52	69	57	48	58	49	42	22
3.00	79	67	57	73	62	53	61	53	46	25
4.00	84	74	65	78	69	61	66	58	52	29
5.00	88	79	71	81	73	66	68	62	57	31
ROOM INDEX	UF(total)									Direct
According to DIN EN 13032-2 2004			Suspended				SHRNOM = 1.25			

C Range: 0 - 360DEG
 C Interval: 22.5DEG
 Test Speed: HIGH
 Temperature:25.2°C
 Operators:Dano
 Test Date:2023-05-13

γ Range: 0 - 180DEG
 γ Interval: 1.0DEG
 Test System:EVERFINE GO-R5000_V2 SYSTEM V2.00.459
 Humidity:55.3%
 Test Distance:2.900m [K=0.8810]
 Remarks:

ISOCANDELA DIAGRAM

Test:U:120.0V I:0.2030A P:24.21W PF:0.9935 Freq:60.01Hz Lamp Flux:1102.26x1 lm		
NAME: PT27-4-3x8S-952C5-MVTD-BK 4000K	TYPE:	WEIGHT:
SPEC.:	DIM.:	SERIAL No.:
MFR.: FOSHAN LEDKEY LIGHTING CO.,LTD.	SUR.:	Shielding Angle:

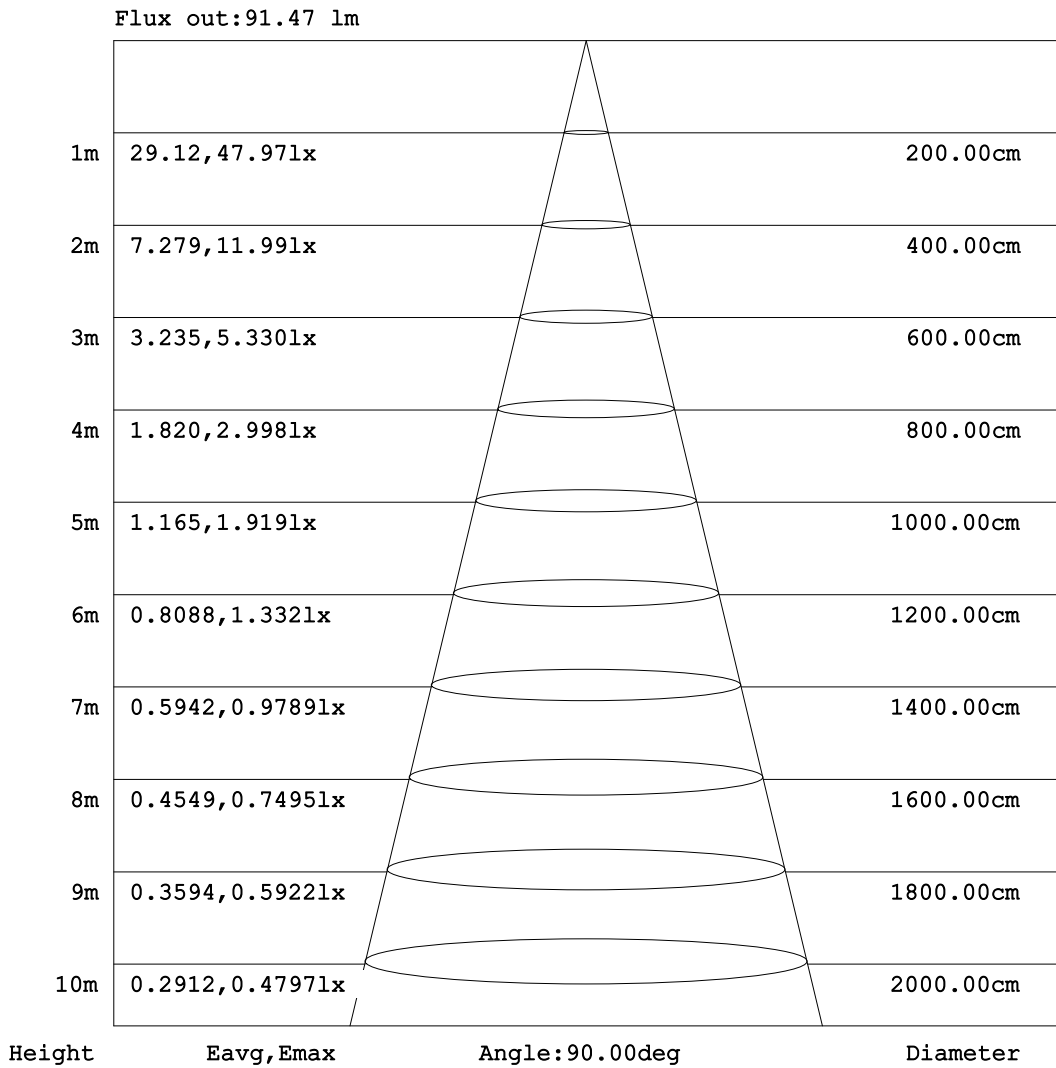


C Range: 0 - 360DEG
C Interval: 22.5DEG
Test Speed: HIGH
Temperature:25.2°C
Operators:Dano
Test Date:2023-05-13

γ Range: 0 - 180DEG
γ Interval: 1.0DEG
Test System:EVERFINE GO-R5000_V2 SYSTEM V2.00.459
Humidity:55.3%
Test Distance:2.900m [K=0.8810]
Remarks:

AAI Figure

Test:U:120.0V I:0.2030A P:24.21W PF:0.9935 Freq:60.01Hz Lamp Flux:1102.26x1 lm		
NAME: PT27-4-3x8S-952C5-MVTD-BK 4000K	TYPE:	WEIGHT:
SPEC.:	DIM.:	SERIAL No.:
MFR.: FOSHAN LEDKEY LIGHTING CO.,LTD.	SUR.:	Shielding Angle:



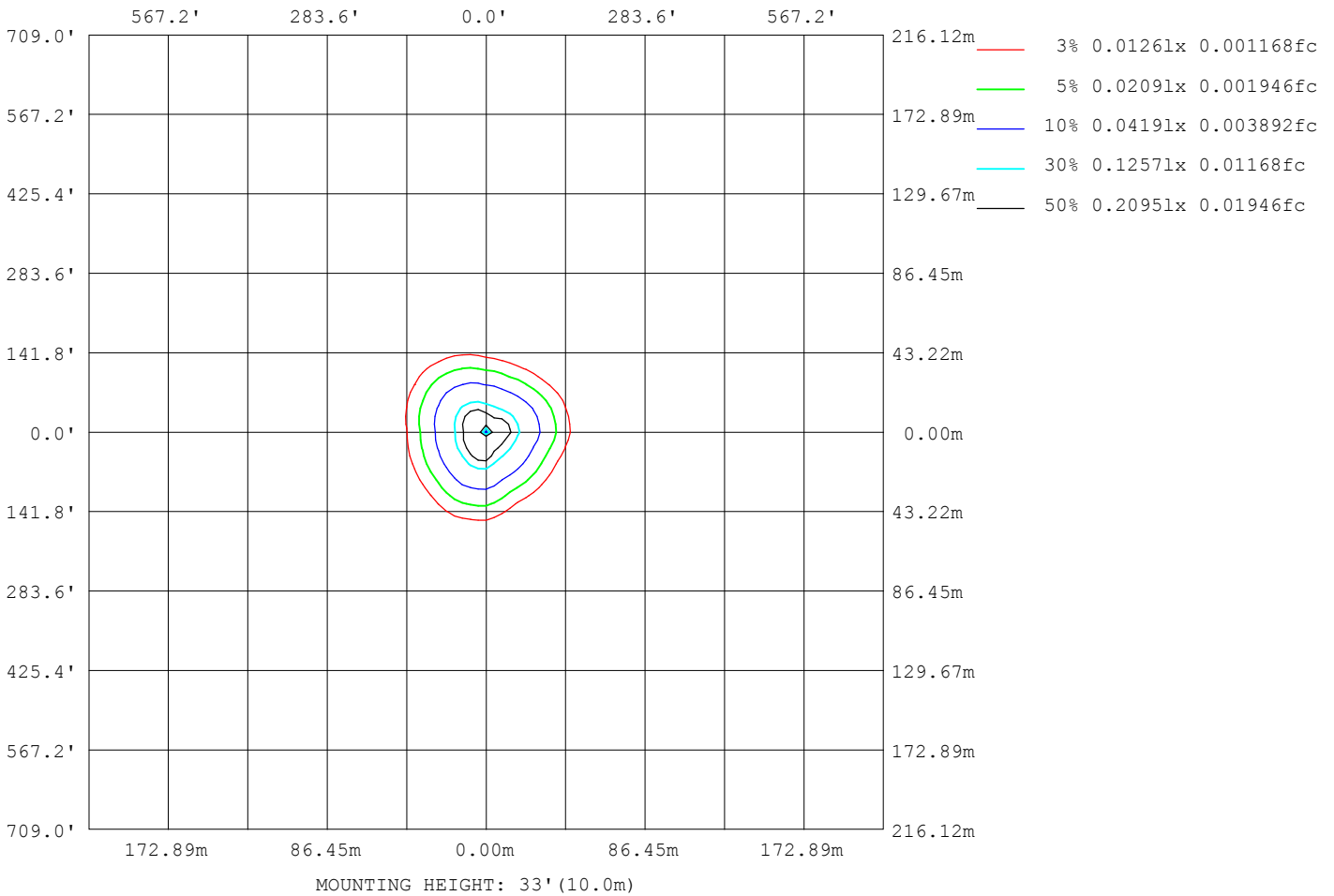
Note:The Curves indicate the illuminated area and the average illumination when the luminaire is at different distance.

C Range: 0 - 360DEG
 C Interval: 22.5DEG
 Test Speed: HIGH
 Temperature:25.2°C
 Operators:Dano
 Test Date:2023-05-13

γ Range: 0 - 180DEG
 γ Interval: 1.0DEG
 Test System:EVERFINE GO-R5000_V2 SYSTEM V2.00.459
 Humidity:55.3%
 Test Distance:2.900m [K=0.8810]
 Remarks:

ISOLUX DIAGRAM

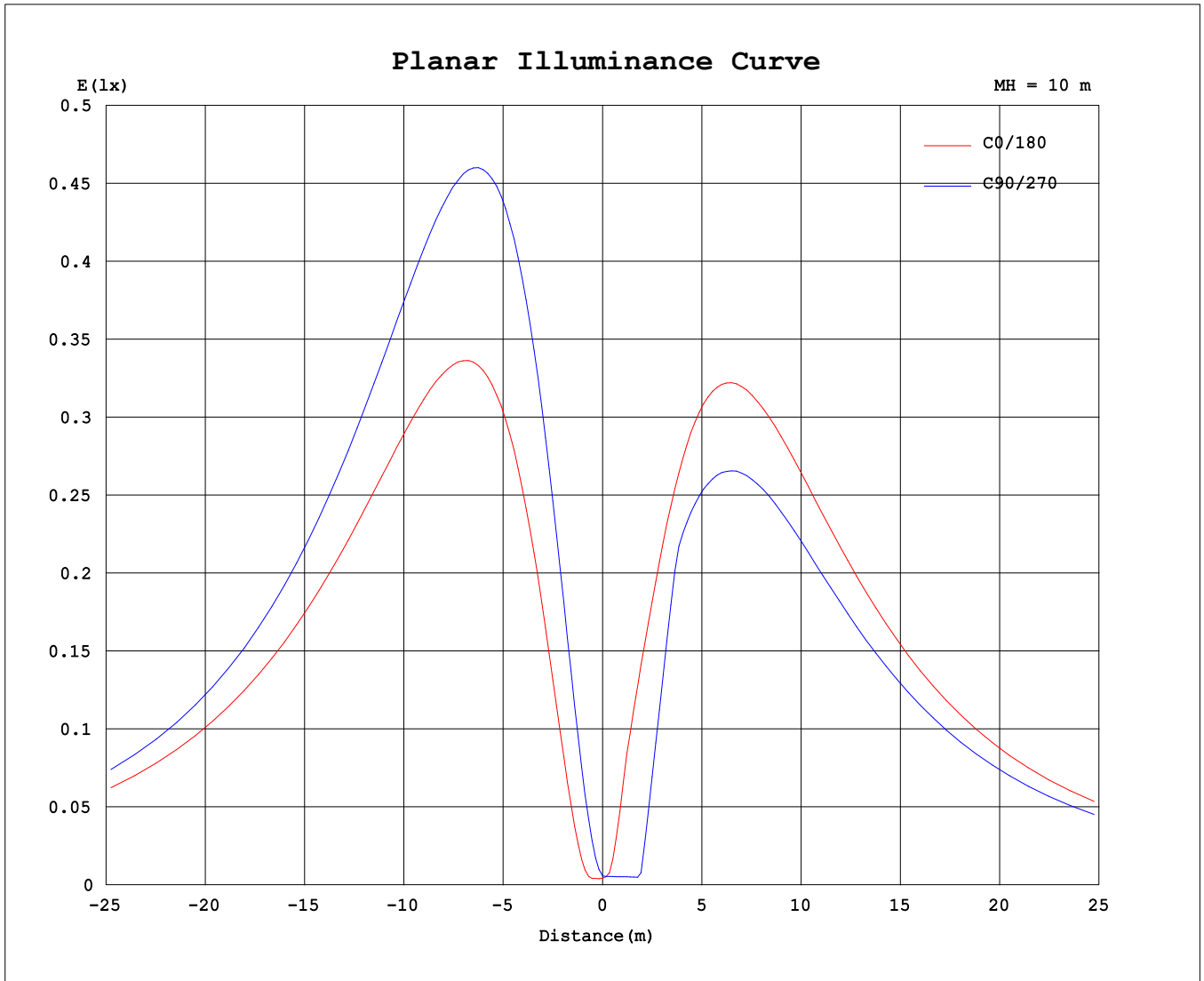
Test:U:120.0V I:0.2030A P:24.21W PF:0.9935 Freq:60.01Hz Lamp Flux:1102.26x1 lm		
NAME: PT27-4-3x8S-952C5-MVTD-BK 4000K	TYPE:	WEIGHT:
SPEC.:	DIM.:	SERIAL No.:
MFR.: FOSHAN LEDKEY LIGHTING CO.,LTD.	SUR.:	Shielding Angle:



C Range: 0 - 360DEG
 C Interval: 22.5DEG
 Test Speed: HIGH
 Temperature:25.2°C
 Operators:Dano
 Test Date:2023-05-13

γ Range: 0 - 180DEG
 γ Interval: 1.0DEG
 Test System:EVERFINE GO-R5000_V2 SYSTEM V2.00.459
 Humidity:55.3%
 Test Distance:2.900m [K=0.8810]
 Remarks:

Planar Illuminance Curve



C Range: 0 - 360DEG
C Interval: 22.5DEG
Test Speed: HIGH
Temperature:25.2℃
Operators:Dano
Test Date:2023-05-13

γ Range: 0 - 180DEG
γ Interval: 1.0DEG
Test System:EVERFINE GO-R5000_V2 SYSTEM V2.00.459
Humidity:55.3%
Test Distance:2.900m [K=0.8810]
Remarks:

LUMINOUS DISTRIBUTION INTENSITY DATA

Test:U:120.0V I:0.2030A P:24.21W PF:0.9935 Freq:60.01Hz Lamp Flux:1102.26x1 lm		
NAME: PT27-4-3x8S-952C5-MVTD-BK 4000K	TYPE:	WEIGHT:
SPEC.:	DIM.:	SERIAL No.:
MFR.: FOSHAN LEDKEY LIGHTING CO.,LTD.	SUR.:	Shielding Angle:

Table--1

UNIT: cd

C (DEG) γ (DEG)	0	22.5	45	67.5	90	112.5	135	157.5	180	202.5	225	247.5	270	292.5	315	337.5			
0	0.55	0.55	0.55	0.55	0.55	0.55	0.55	0.55	0.55	0.55	0.55	0.55	0.55	0.55	0.55	0.55			
5	1.20	0.98	2.40	4.20	5.34	5.50	5.31	5.38	5.89	3.72	0.81	0.48	0.49	0.52	0.74	1.10			
10	8.49	5.29	6.51	11.6	15.1	15.7	13.7	13.3	16.3	17.4	13.2	5.29	0.48	1.56	4.73	7.14			
15	20.2	13.2	12.8	20.6	26.9	28.0	24.0	22.4	26.5	29.0	29.5	20.1	9.22	7.21	11.8	16.6			
20	33.6	22.7	20.3	29.3	39.4	41.0	35.0	32.3	37.5	40.7	41.3	34.0	22.0	16.9	20.2	26.7			
25	47.5	32.9	28.6	36.9	51.8	54.0	46.0	42.5	48.9	52.7	53.2	43.6	29.9	25.8	29.0	36.7			
30	61.5	43.3	38.0	43.1	63.9	66.7	56.8	52.6	60.2	64.6	65.0	53.1	36.8	32.5	37.2	47.0			
35	74.9	53.5	47.9	48.5	75.4	78.9	67.1	62.2	71.2	76.1	76.4	62.3	43.7	36.6	44.4	57.4			
40	87.9	63.2	57.4	54.2	86.2	90.3	76.6	71.3	81.7	87.3	87.5	71.1	50.4	41.5	51.9	67.4			
45	100	72.3	66.4	60.9	96.2	101	85.3	79.5	91.6	98.0	98.1	79.4	56.7	48.0	59.2	76.9			
50	112	80.8	74.6	68.3	105	111	93.1	86.9	101	108	108	87.1	62.4	54.4	66.1	86.0			
55	123	88.5	81.9	75.3	113	119	100.0	93.2	109	117	118	94.3	67.6	60.1	72.4	94.3			
60	132	95.3	88.1	81.5	120	126	106	98.5	116	126	126	101	72.3	65.2	78.1	102			
65	141	101	93.4	86.7	126	132	110	103	122	134	134	106	76.3	69.6	83.1	109			
70	148	106	97.6	90.9	130	137	114	106	127	140	140	111	79.8	73.4	87.4	114			
75	155	111	101	94.1	132	140	116	108	131	146	146	115	82.6	76.6	90.9	119			
80	159	114	103	96.2	133	141	117	109	133	150	150	118	84.7	79.2	93.6	123			
85	163	116	104	97.1	128	141	116	109	135	153	153	120	86.1	80.8	95.5	126			
90	164	117	104	96.5	125	139	115	108	135	154	154	120	86.5	81.5	96.5	127			
95	164	117	103	93.7	113	135	112	106	133	153	153	120	86.6	81.0	96.6	127			
100	162	116	100	89.7	101	131	108	102	131	152	151	118	85.7	79.9	95.8	125			
105	159	113	96.9	85.0	105	125	103	97.9	127	148	148	115	83.9	78.4	94.1	123			
110	154	110	92.6	79.6	104	118	97.8	92.8	121	143	143	111	81.4	76.7	91.6	119			
115	148	106	87.5	73.7	98.8	110	91.4	86.6	115	137	136	106	78.1	74.1	88.3	114			
120	140	101	81.7	67.3	92.3	101	84.4	79.5	107	129	129	101	73.9	70.5	84.1	108			
125	132	95.2	75.2	60.6	84.7	92.0	76.8	71.7	98.9	120	120	93.7	69.1	66.0	79.3	102			
130	122	88.4	68.0	53.5	76.1	82.3	68.7	63.4	89.5	110	110	86.1	63.6	60.7	73.8	94.0			
135	111	80.9	60.3	46.2	67.0	72.2	60.3	54.7	79.3	99.2	98.9	77.8	57.4	54.8	67.4	85.6			
140	99.5	72.7	52.2	38.8	57.5	61.9	51.5	45.5	68.5	86.8	87.3	69.1	50.7	48.5	60.1	76.5			
145	87.3	63.9	43.8	31.3	47.6	51.4	42.4	36.2	57.2	73.1	75.0	60.4	43.6	41.6	51.6	66.5			
150	74.5	54.5	35.4	23.9	37.5	40.7	33.3	27.1	45.8	58.0	61.9	51.4	36.4	34.4	42.2	55.9			
155	61.1	44.7	27.1	17.1	27.6	30.1	24.1	18.3	34.8	42.4	48.0	41.5	29.5	26.8	32.1	44.6			
160	47.5	34.6	19.6	11.5	18.0	19.8	15.5	10.4	24.2	27.5	33.7	30.8	22.1	19.2	22.7	33.1			
165	33.6	24.5	13.2	6.69	9.26	10.5	7.80	3.99	14.5	15.2	20.4	19.5	14.3	11.9	14.6	22.7			
170	20.2	14.9	8.19	3.04	2.52	3.07	2.04	0.46	6.04	6.03	9.15	9.11	6.55	3.71	7.21	13.3			
175	8.53	6.58	4.05	1.72	0.40	0.17	0.17	0.19	0.51	0.52	1.15	1.18	0.29	0.18	0.24	1.95			
180	0.00	0.00	0.00	0.00	0.08	0.15	0.17	0.15	0.16	0.15	0.16	0.15	0.16	0.16	0.17	0.17			

C Range: 0 - 360DEG
 C Interval: 22.5DEG
 Test Speed: HIGH
 Temperature:25.2℃
 Operators:Dano
 Test Date:2023-05-13

γ Range: 0 - 180DEG
 γ Interval: 1.0DEG
 Test System:EVERFINE GO-R5000_V2 SYSTEM V2.00.459
 Humidity:55.3%
 Test Distance:2.900m [K=0.8810]
 Remarks: