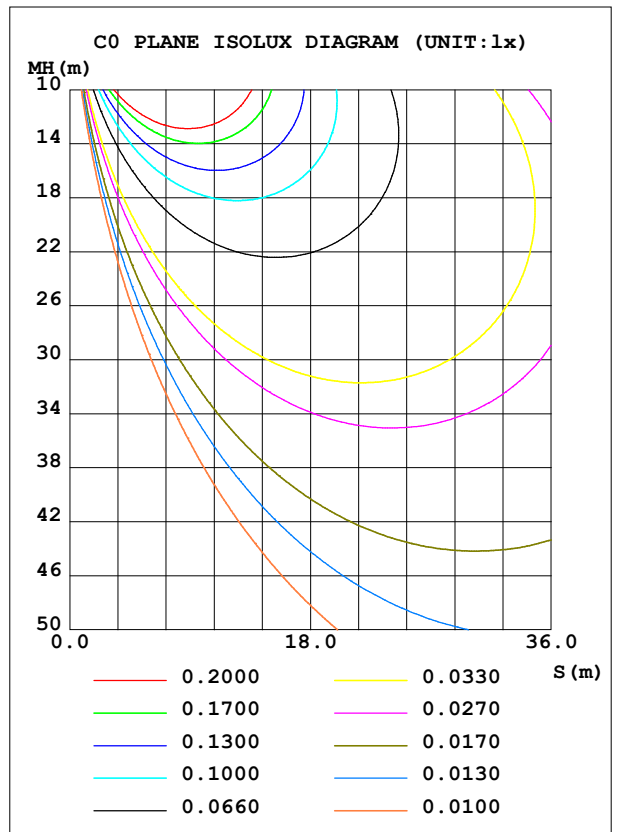
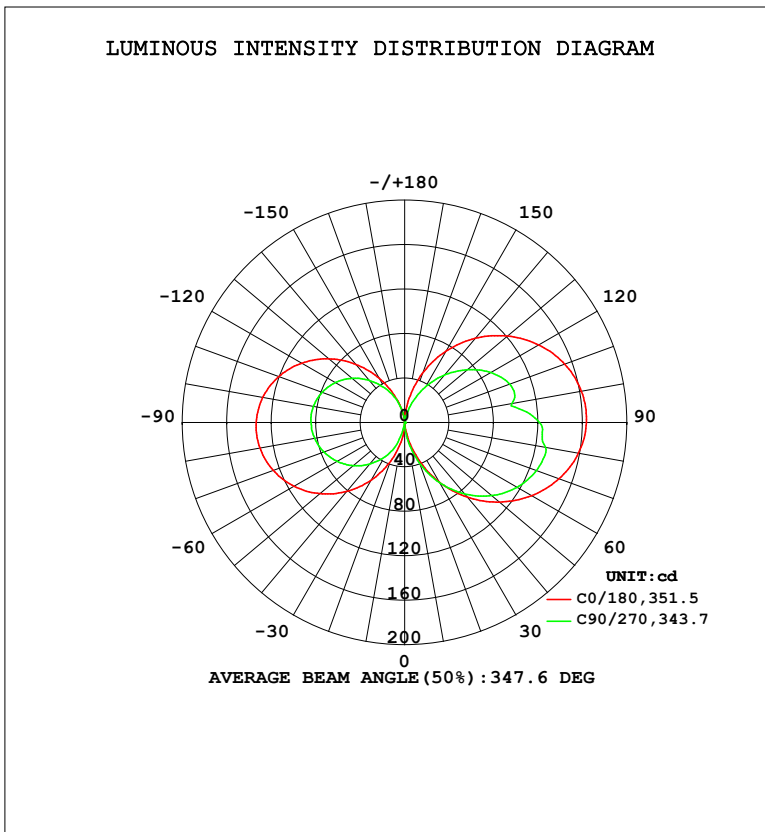


LUMINAIRE PHOTOMETRIC TEST REPORT

Test:U:120.0V I:0.2036A P:24.28W PF:0.9936 Freq:60.01Hz Lamp Flux:1081.17x1 lm		
NAME: PT27-4-3x8S-952C5-MVTD-BK 3500K	TYPE:	WEIGHT:
SPEC.:	DIM.:	SERIAL No.:
MFR.: FOSHAN LEDKEY LIGHTING CO.,LTD.	SUR.:	Shielding Angle:

DATA OF LAMP		PHOTOMETRIC DATA				Eff: 44.53 lm/W
MODEL		I <sub>max</sub> (cd)	163.7	S/MH (C0/180)		14.17
NOMINAL POWER (W)		LOR (%)	100.0	S/MH (C90/270)		12.04
RATED VOLTAGE (V)	120	TOTAL FLUX (lm)	1081.2	η UP, DN (C0-180)		23.5, 26.7
NOMINAL FLUX (lm)	1081.17	CIE CLASS	DIFFUSE	η UP, DN (C180-360)		25.1, 24.7
LAMPS INSIDE	1	η up (%)	48.6	CIBSE SHR NOM		1.25
TEST VOLTAGE (V)	120	η down (%)	51.4	CIBSE SHR MAX		1.35



C Range: 0 - 360DEG  
 C Interval: 22.5DEG  
 Test Speed: HIGH  
 Temperature: 25.2 °C  
 Operators: Dano  
 Test Date: 2023-05-13

γ Range: 0 - 180DEG  
 γ Interval: 1.0DEG  
 Test System: EVERFINE GO-R5000\_V2 SYSTEM V2.00.459  
 Humidity: 55.3%  
 Test Distance: 2.900m [K=0.8810]  
 Remarks:

ZONAL FLUX DIAGRAM

ZONAL FLUX DIAGRAM:

γ	C0	C45	C90	C135	C180	C225	C270	C315	γ	Φ zone	Φ total	%lum,lamp
10	8.654	6.489	14.83	13.51	16.01	12.82	0.4761	4.670	0- 10	0.4769	0.4769	0.04,0.04
20	33.76	19.94	38.44	34.34	36.99	39.87	21.21	19.87	10- 20	5.830	6.307	0.58,0.58
30	61.46	37.31	62.21	55.76	59.56	62.88	35.64	36.58	20- 30	18.88	25.19	2.33,2.33
40	87.82	56.14	83.90	75.04	81.00	84.78	48.91	50.97	30- 40	37.51	62.70	5.8,5.8
50	111.5	72.76	102.5	91.27	99.73	105.0	60.61	65.01	40- 50	59.87	122.6	11.3,11.3
60	131.9	85.96	116.9	103.6	115.0	122.6	70.17	76.83	50- 60	83.16	205.7	19,19
70	148.0	95.23	126.3	111.3	126.0	136.5	77.53	85.99	60- 70	104.0	309.7	28.6,28.6
80	158.9	100.4	128.8	114.2	132.3	145.9	82.33	92.11	70- 80	119.4	429.1	39.7,39.7
90	163.6	101.4	121.4	112.2	133.6	149.7	84.22	94.95	80- 90	126.8	556.0	51.4,51.4
100	161.6	97.46	97.94	105.8	129.7	147.4	83.45	94.25	90-100	124.8	680.7	63,63
110	153.4	90.01	100.8	95.57	120.7	139.0	79.18	90.10	100-110	115.1	795.8	73.6,73.6
120	139.5	79.38	89.80	82.47	107.0	125.3	71.99	82.78	110-120	98.98	894.8	82.8,82.8
130	121.1	66.04	73.94	67.11	89.18	107.1	61.98	72.54	120-130	77.85	972.7	90,90
140	98.84	50.59	55.83	50.19	68.32	85.31	49.46	59.09	130-140	54.93	1028	95,95
150	73.81	34.21	36.38	32.36	45.92	60.60	35.65	41.37	140-150	33.24	1061	98.1,98.1
160	46.89	18.87	17.29	14.98	24.41	33.20	21.77	22.18	150-160	15.59	1076	99.6,99.6
170	19.80	7.809	2.372	1.905	6.254	9.204	6.557	7.104	160-170	4.417	1081	100,100
180	0.0260	0	0.0927	0.1732	0.1640	0.1605	0.1552	0.1712	170-180	0.3195	1081	100,100
DEG	LUMINOUS INTENSITY:cd									UNIT:lm		

Conical surface Flux(90deg): 89.696 lm

%lum = 8.3%

%lamp = 8.3%

Conical surface Flux(120deg): 205.73 lm

%lum = 19.0%

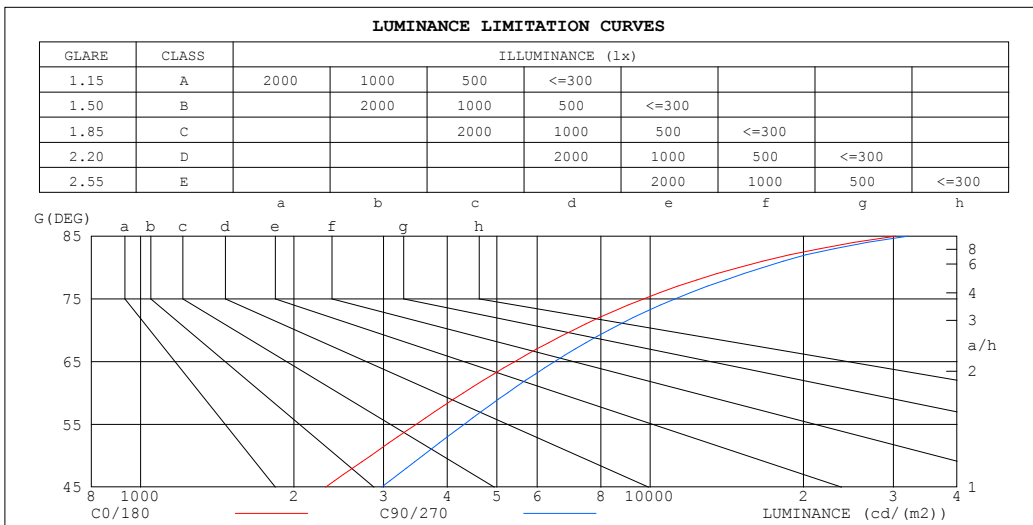
%lamp = 19.0%

C Range: 0 - 360DEG  
 C Interval: 22.5DEG  
 Test Speed: HIGH  
 Temperature:25.2℃  
 Operators:Dano  
 Test Date:2023-05-13

γ Range: 0 - 180DEG  
 γ Interval: 1.0DEG  
 Test System:EVERFINE GO-R5000\_V2 SYSTEM V2.00.459  
 Humidity:55.3%  
 Test Distance:2.900m [K=0.8810]  
 Remarks:

LUMINANCE LIMITATION CURVES

Test:U:120.0V I:0.2036A P:24.28W PF:0.9936 Freq:60.01Hz Lamp Flux:1081.17x1 lm		
NAME: PT27-4-3x8S-952C5-MVTD-BK 3500K	TYPE:	WEIGHT:
SPEC.:	DIM.:	SERIAL No.:
MFR.: FOSHAN LEDKEY LIGHTING CO.,LTD.	SUR.:	Shielding Angle:



LUMINANCE cd/(m2)		
G (DEG)	C0/180	C90/270
85	30317	32025
80	14924	16651
75	9713	11187
70	7056	8289
65	5422	6494
60	4301	5248
55	3473	4315
50	2829	3579
45	2306	2974

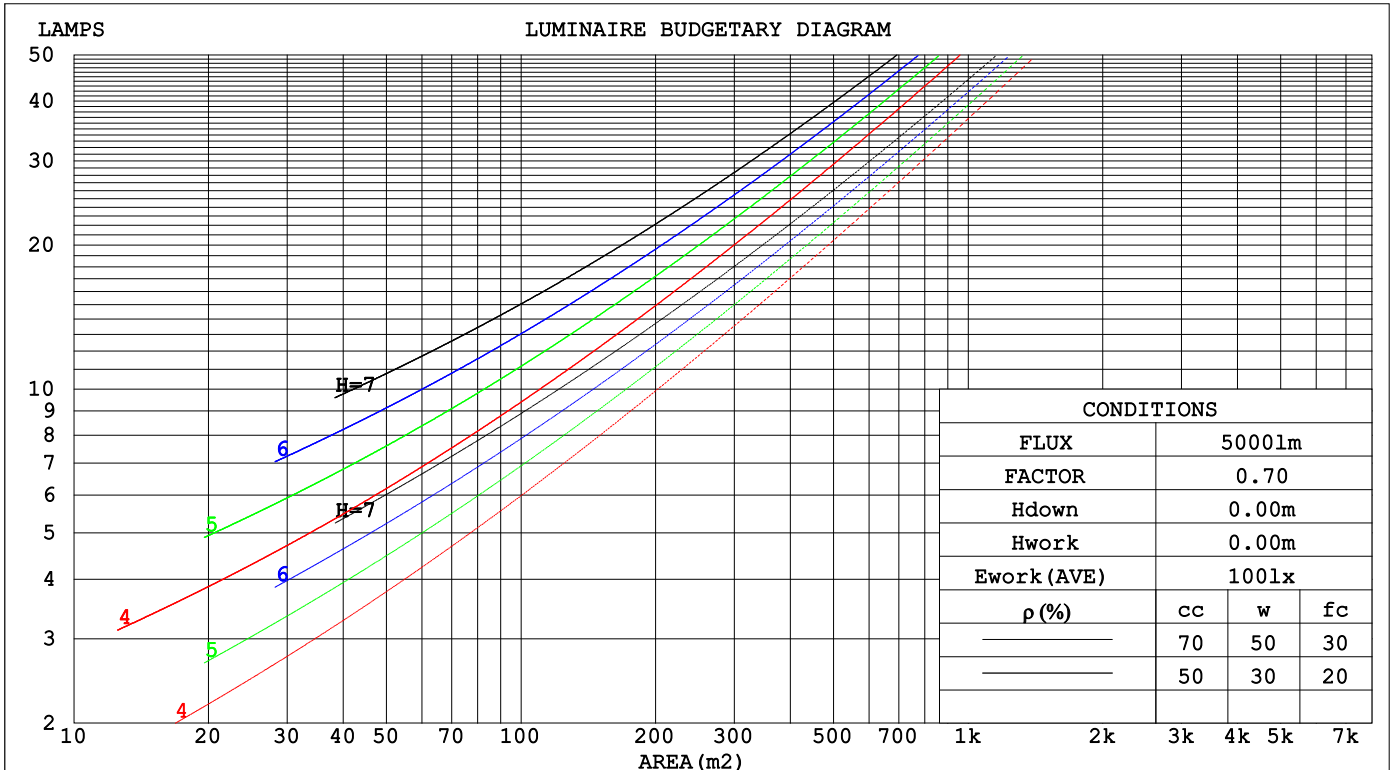
C Range: 0 - 360DEG  
 C Interval: 22.5DEG  
 Test Speed: HIGH  
 Temperature: 25.2°C  
 Operators: Dano  
 Test Date: 2023-05-13

γ Range: 0 - 180DEG  
 γ Interval: 1.0DEG  
 Test System: EVERFINE GO-R5000\_V2 SYSTEM V2.00.459  
 Humidity: 55.3%  
 Test Distance: 2.900m [K=0.8810]  
 Remarks:

**CU AND LUMINAIRE BUDGETARY ESTIMATE DIAGRAM**

Test:U:120.0V I:0.2036A P:24.28W PF:0.9936 Freq:60.01Hz Lamp Flux:1081.17x1 lm		
NAME: PT27-4-3x8S-952C5-MVTD-BK 3500K	TYPE:	WEIGHT:
SPEC.:	DIM.:	SERIAL No.:
MFR.: FOSHAN LEDKEY LIGHTING CO.,LTD.	SUR.:	Shielding Angle:

$\rho_{cc}$	80%			70%			50%			30%			10%			0
$\rho_w$	50%	30%	10%	50%	30%	10%	50%	30%	10%	50%	30%	10%	50%	30%	10%	0
$\rho_{fc}$	20%			20%			20%			20%			20%			0
RCR	RCR:Room Cavity Ratio						Coefficients of Utilization(CU)									
0.0	1.07	1.07	1.07	.99	.99	.99	.84	.84	.84	.70	.70	.70	.57	.57	.57	.51
1.0	.85	.79	.73	.78	.72	.67	.65	.60	.56	.52	.49	.46	.41	.39	.36	.31
2.0	.71	.62	.55	.65	.57	.51	.53	.47	.42	.43	.38	.34	.33	.29	.26	.21
3.0	.60	.51	.43	.55	.46	.40	.45	.38	.33	.36	.30	.26	.27	.23	.20	.15
4.0	.52	.42	.35	.48	.39	.32	.39	.32	.26	.31	.25	.21	.23	.19	.15	.11
5.0	.46	.36	.29	.42	.33	.26	.34	.27	.21	.27	.21	.17	.20	.16	.12	.09
6.0	.40	.31	.24	.37	.28	.22	.30	.23	.18	.24	.18	.14	.18	.13	.10	.07
7.0	.36	.27	.20	.33	.24	.19	.27	.20	.15	.21	.16	.12	.16	.12	.08	.06
8.0	.32	.23	.17	.30	.22	.16	.24	.18	.13	.19	.14	.10	.14	.10	.07	.05
9.0	.29	.21	.15	.27	.19	.14	.22	.16	.11	.17	.12	.09	.13	.09	.06	.04
10.0	.27	.19	.13	.24	.17	.12	.20	.14	.10	.16	.11	.08	.12	.08	.05	.03



C Range: 0 - 360DEG  
 C Interval: 22.5DEG  
 Test Speed: HIGH  
 Temperature:25.2°C  
 Operators:Dano  
 Test Date:2023-05-13

$\gamma$  Range: 0 - 180DEG  
 $\gamma$  Interval: 1.0DEG  
 Test System:EVERFINE GO-R5000\_V2 SYSTEM V2.00.459  
 Humidity:55.3%  
 Test Distance:2.900m [K=0.8810]  
 Remarks:

WEC AND CCEC

Test:U:120.0V I:0.2036A P:24.28W PF:0.9936 Freq:60.01Hz Lamp Flux:1081.17x1 lm		
NAME: PT27-4-3x8S-952C5-MVTD-BK 3500K	TYPE:	WEIGHT:
SPEC.:	DIM.:	SERIAL No.:
MFR.: FOSHAN LEDKEY LIGHTING CO.,LTD.	SUR.:	Shielding Angle:

ρcc	80%			70%			50%			30%			10%			0
ρw	50%	30%	10%	50%	30%	10%	50%	30%	10%	50%	30%	10%	50%	30%	10%	0
ρfc	20%			20%			20%			20%			20%			0
RCR	RCR:Room Cavity Ratio						Wall Exitance Coefficients(WEC)									
0.0																
1.0	.446	.254	.080	.424	.242	.077	.383	.220	.070	.345	.199	.064	.310	.180	.058	
2.0	.366	.201	.062	.346	.191	.059	.308	.171	.053	.273	.153	.048	.241	.136	.043	
3.0	.316	.168	.050	.298	.159	.048	.263	.143	.043	.231	.127	.039	.201	.111	.034	
4.0	.279	.145	.043	.262	.137	.041	.231	.122	.037	.201	.108	.033	.174	.094	.029	
5.0	.250	.128	.037	.235	.121	.035	.206	.107	.032	.178	.094	.028	.153	.082	.025	
6.0	.227	.114	.033	.213	.108	.031	.186	.095	.028	.161	.084	.025	.137	.072	.021	
7.0	.208	.103	.029	.195	.097	.028	.170	.086	.025	.146	.075	.022	.124	.065	.019	
8.0	.192	.094	.026	.179	.088	.025	.156	.078	.022	.134	.068	.020	.114	.059	.017	
9.0	.178	.086	.024	.166	.081	.023	.145	.072	.020	.124	.062	.018	.105	.053	.015	
10.0	.165	.079	.022	.155	.075	.021	.135	.066	.019	.116	.057	.016	.098	.049	.014	

ρcc	80%			70%			50%			30%			10%			0
ρw	50%	30%	10%	50%	30%	10%	50%	30%	10%	50%	30%	10%	50%	30%	10%	0
ρfc	20%			20%			20%			20%			20%			0
RCR	RCR:Room Cavity Ratio						Ceiling Cavity Exitance Coefficients(CCEC)									
0.0	.561	.561	.561	.479	.479	.479	.327	.327	.327	.188	.188	.188	.060	.060	.060	
1.0	.563	.528	.497	.482	.453	.428	.329	.312	.296	.190	.180	.172	.061	.058	.056	
2.0	.558	.507	.465	.478	.437	.402	.327	.302	.280	.189	.176	.164	.061	.057	.054	
3.0	.551	.492	.445	.472	.425	.386	.324	.295	.271	.187	.172	.160	.060	.056	.052	
4.0	.544	.481	.433	.466	.416	.376	.321	.290	.265	.186	.170	.157	.060	.055	.052	
5.0	.536	.472	.425	.460	.408	.370	.317	.285	.261	.184	.168	.155	.059	.055	.051	
6.0	.529	.465	.419	.454	.403	.365	.313	.282	.258	.182	.166	.153	.059	.054	.051	
7.0	.522	.459	.415	.449	.398	.361	.310	.279	.256	.180	.164	.152	.058	.054	.050	
8.0	.515	.454	.411	.443	.393	.359	.307	.276	.255	.178	.163	.152	.058	.053	.050	
9.0	.509	.449	.409	.438	.390	.357	.304	.274	.253	.177	.162	.151	.057	.053	.050	
10.0	.503	.445	.407	.433	.387	.355	.301	.272	.252	.175	.161	.151	.057	.053	.050	

C Range: 0 - 360DEG  
 C Interval: 22.5DEG  
 Test Speed: HIGH  
 Temperature:25.2℃  
 Operators:Dano  
 Test Date:2023-05-13

γ Range: 0 - 180DEG  
 γ Interval: 1.0DEG  
 Test System:EVERFINE GO-R5000\_V2 SYSTEM V2.00.459  
 Humidity:55.3%  
 Test Distance:2.900m [K=0.8810]  
 Remarks:

UGR(Unified Glare Rating) Table

Test:U:120.0V I:0.2036A P:24.28W PF:0.9936 Freq:60.01Hz										
Lamp Flux:1081.17x1 lm										
NAME: PT27-4-3x8S-952C5-MVTD-BK 3500K					TYPE:			WEIGHT:		
SPEC.:					DIM.:			SERIAL No.:		
MFR.: FOSHAN LEDKEY LIGHTING CO.,LTD.					SUR.:			Shielding Angle:		
ceiling/cavity	0.7	0.7	0.5	0.5	0.3	0.7	0.7	0.5	0.5	0.3
walls	0.5	0.3	0.5	0.3	0.3	0.5	0.3	0.5	0.3	0.3
working plane	0.2	0.2	0.2	0.2	0.2	0.2	0.2	0.2	0.2	0.2
Room dimensions	Viewed crosswise					Viewed endwise				
x = 2H y = 2H	9.8	12.0	11.6	13.9	16.2	13.1	15.3	14.9	17.2	19.6
3H	14.0	16.0	15.8	17.9	20.3	16.8	18.8	18.6	20.7	23.1
4H	16.2	18.1	18.0	20.0	22.4	18.6	20.6	20.4	22.4	24.9
6H	18.5	20.4	20.4	22.3	24.8	20.6	22.4	22.5	24.3	26.8
8H	19.8	21.6	21.7	23.5	26.0	21.6	23.4	23.5	25.3	27.8
12H	21.3	23.0	23.2	24.9	27.5	22.8	24.5	24.6	26.4	28.9
4H 2H	10.5	12.4	12.3	14.3	16.8	13.3	15.3	15.2	17.2	19.6
3H	14.6	16.3	16.4	18.2	20.7	17.3	19.0	19.1	20.9	23.4
4H	16.8	18.4	18.7	20.3	22.9	19.4	21.0	21.3	22.9	25.5
6H	19.3	20.7	21.2	22.7	25.3	21.6	23.1	23.6	25.0	27.6
8H	20.7	22.0	22.6	24.0	26.6	22.8	24.1	24.7	26.1	28.7
12H	22.3	23.5	24.2	25.5	28.2	24.1	25.3	26.0	27.3	30.0
8H 4H	17.3	18.6	19.2	20.6	23.2	19.7	21.0	21.6	23.0	25.6
6H	19.9	21.1	21.9	23.1	25.7	22.3	23.4	24.3	25.5	28.1
8H	21.5	22.5	23.4	24.5	27.2	23.7	24.7	25.7	26.8	29.4
12H	23.3	24.2	25.3	26.2	28.9	25.3	26.2	27.3	28.3	31.0
12H 4H	17.4	18.6	19.4	20.7	23.3	19.8	21.0	21.7	23.0	25.6
6H	20.2	21.2	22.2	23.2	25.9	22.4	23.5	24.4	25.5	28.2
8H	21.8	22.7	23.8	24.8	27.5	24.0	24.9	26.0	27.0	29.7
CIE190: 2010										

CIE190: 2010  
Area: 0.0494 m2

C Range: 0 - 360DEG  
C Interval: 22.5DEG  
Test Speed: HIGH  
Temperature:25.2℃  
Operators:Dano  
Test Date:2023-05-13

γ Range: 0 - 180DEG  
γ Interval: 1.0DEG  
Test System:EVERFINE GO-R5000\_V2 SYSTEM V2.00.459  
Humidity:55.3%  
Test Distance:2.900m [K=0.8810]  
Remarks:

**UTILIZATION FACTORS TABLE**

Test:U:120.0V I:0.2036A P:24.28W PF:0.9936 Freq:60.01Hz Lamp Flux:1081.17x1 lm		
NAME: PT27-4-3x8S-952C5-MVTD-BK 3500K	TYPE:	WEIGHT:
SPEC.:	DIM.:	SERIAL No.:
MFR.: FOSHAN LEDKEY LIGHTING CO.,LTD.	SUR.:	Shielding Angle:

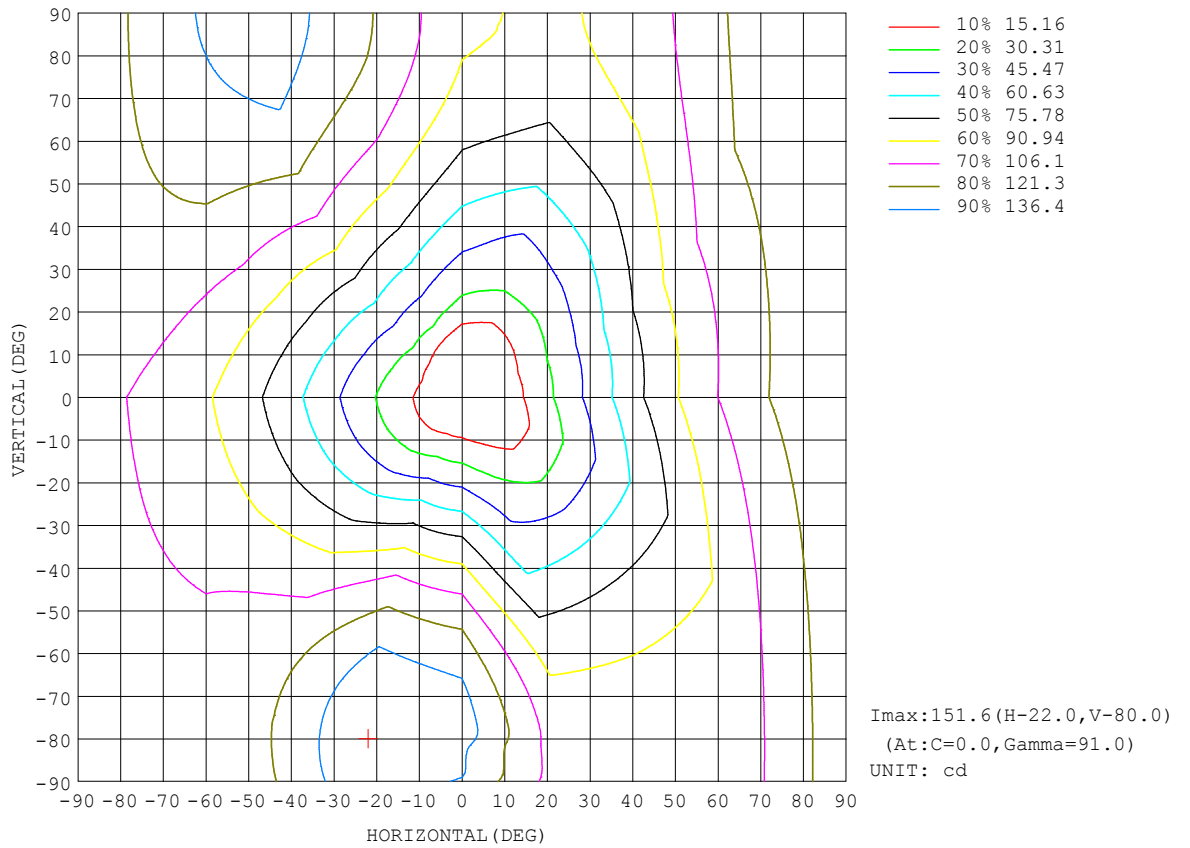
REFLECTANCE										
Ceiling	0.8	0.8	0.8	0.7	0.7	0.7	0.5	0.5	0.5	0
Walls	0.7	0.5	0.3	0.7	0.5	0.3	0.7	0.5	0.3	0
Working plane	0.2	0.2	0.2	0.2	0.2	0.2	0.2	0.2	0.2	0
ROOM INDEX	UTILIZATION FACTORS (PERCENT) $k(RI) \times RCR = 5$									
k = 0.60	33	20	13	32	19	12	28	18	11	4
0.80	42	27	18	39	26	18	34	23	16	6
1.00	49	34	24	46	32	23	40	30	21	9
1.25	56	41	31	52	38	29	45	33	26	12
1.50	61	46	36	57	43	34	48	38	30	14
2.00	69	55	45	64	52	42	54	44	37	19
2.50	75	62	52	69	57	48	58	49	42	22
3.00	79	67	57	73	62	53	61	53	46	25
4.00	84	74	65	78	69	61	66	58	52	29
5.00	88	79	71	81	73	66	68	62	57	31
ROOM INDEX	UF(total)									Direct
According to DIN EN 13032-2 2004			Suspended				SHRNOM = 1.25			

C Range: 0 - 360DEG  
 C Interval: 22.5DEG  
 Test Speed: HIGH  
 Temperature:25.2°C  
 Operators:Dano  
 Test Date:2023-05-13

$\gamma$  Range: 0 - 180DEG  
 $\gamma$  Interval: 1.0DEG  
 Test System:EVERFINE GO-R5000\_V2 SYSTEM V2.00.459  
 Humidity:55.3%  
 Test Distance:2.900m [K=0.8810]  
 Remarks:

ISOCANDELA DIAGRAM

Test:U:120.0V I:0.2036A P:24.28W PF:0.9936 Freq:60.01Hz Lamp Flux:1081.17x1 lm		
NAME: PT27-4-3x8S-952C5-MVTD-BK 3500K	TYPE:	WEIGHT:
SPEC.:	DIM.:	SERIAL No.:
MFR.: FOSHAN LEDKEY LIGHTING CO.,LTD.	SUR.:	Shielding Angle:



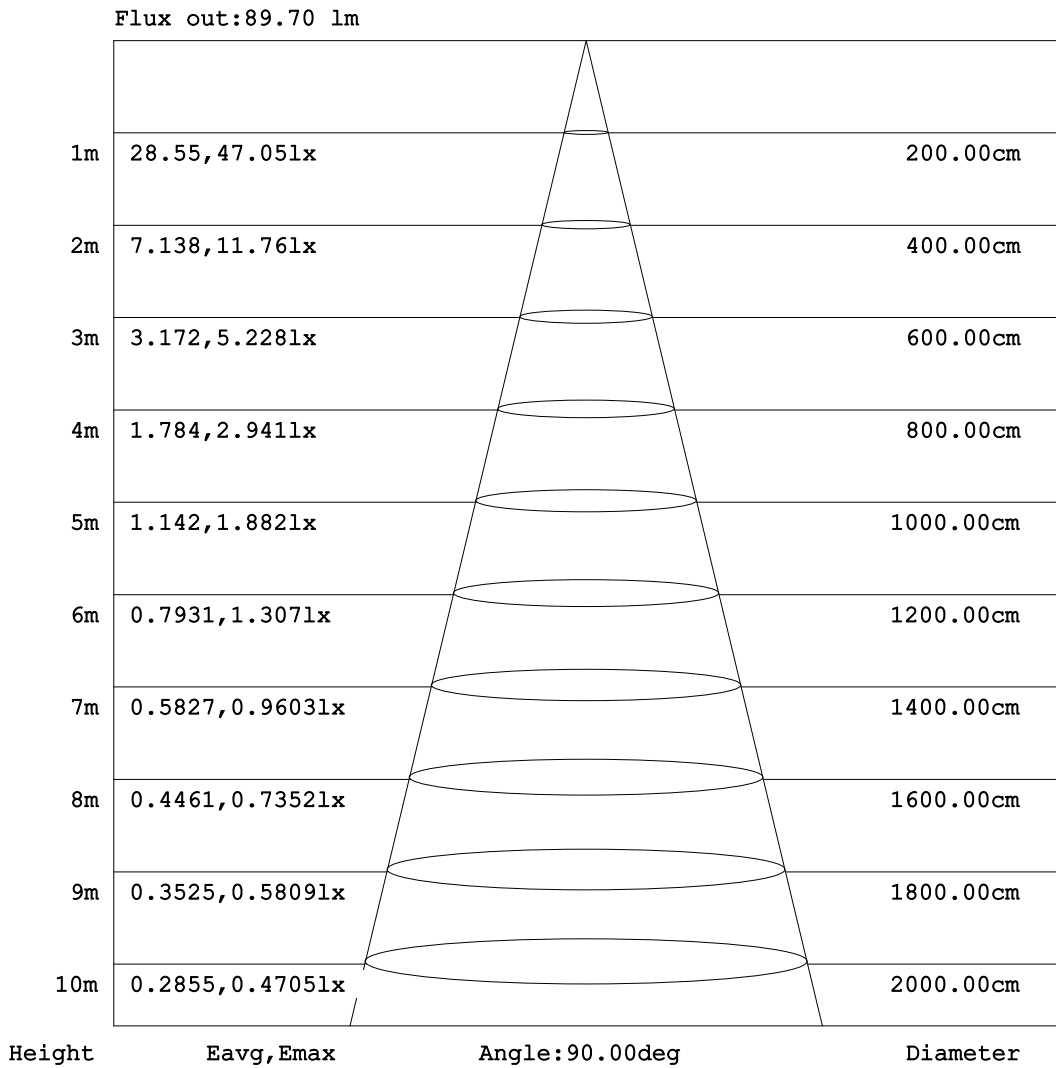
C Range: 0 - 360DEG  
C Interval: 22.5DEG  
Test Speed: HIGH  
Temperature:25.2°C  
Operators:Dano  
Test Date:2023-05-13

γ Range: 0 - 180DEG  
γ Interval: 1.0DEG  
Test System:EVERFINE GO-R5000\_V2 SYSTEM V2.00.459  
Humidity:55.3%  
Test Distance:2.900m [K=0.8810]  
Remarks:



**AAI Figure**

Test:U:120.0V I:0.2036A P:24.28W PF:0.9936 Freq:60.01Hz Lamp Flux:1081.17x1 lm		
NAME: PT27-4-3x8S-952C5-MVTD-BK 3500K	TYPE:	WEIGHT:
SPEC.:	DIM.:	SERIAL No.:
MFR.: FOSHAN LEDKEY LIGHTING CO.,LTD.	SUR.:	Shielding Angle:



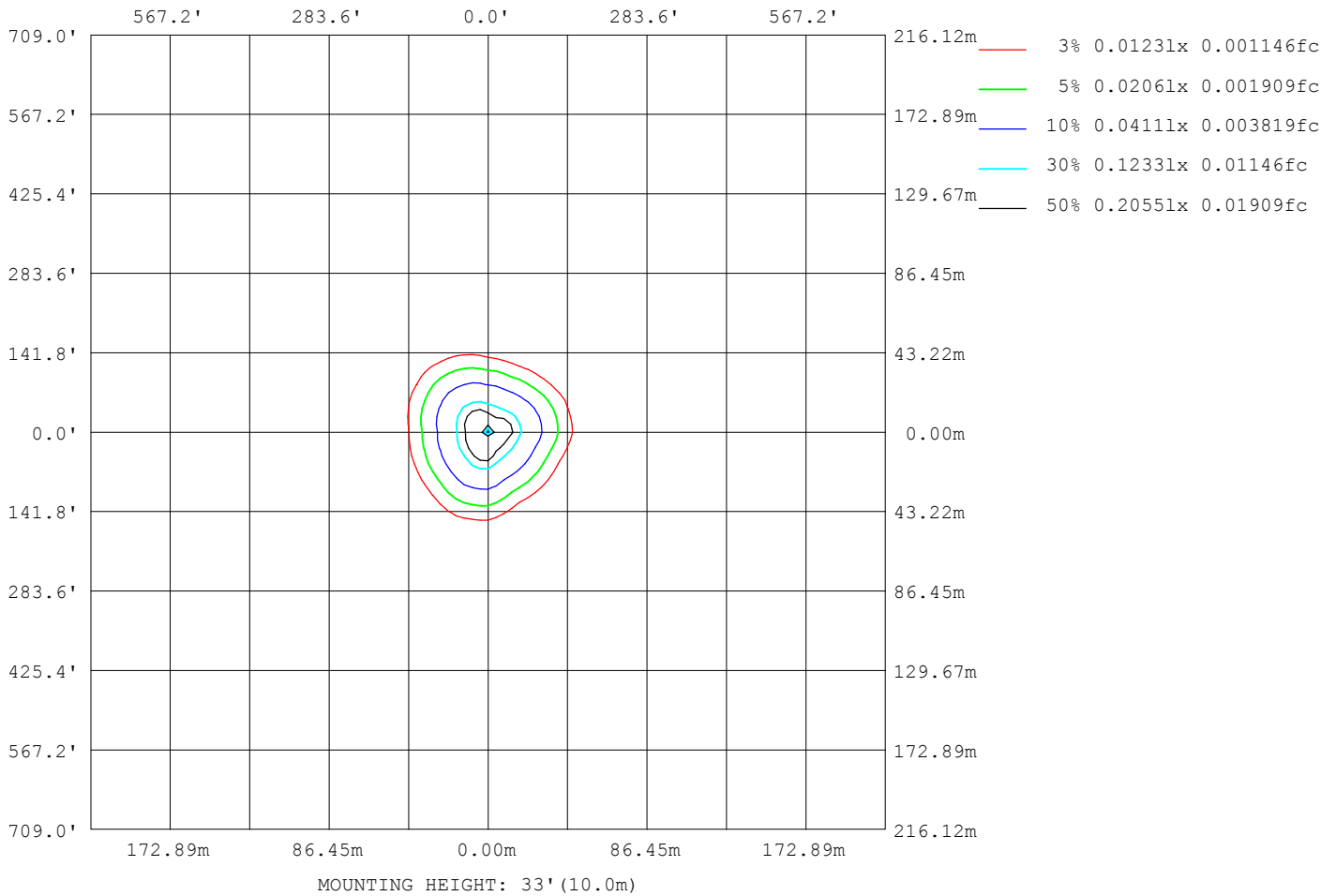
Note:The Curves indicate the illuminated area and the average illumination when the luminaire is at different distance.

C Range: 0 - 360DEG  
 C Interval: 22.5DEG  
 Test Speed: HIGH  
 Temperature:25.2℃  
 Operators:Dano  
 Test Date:2023-05-13

γ Range: 0 - 180DEG  
 γ Interval: 1.0DEG  
 Test System:EVERFINE GO-R5000\_V2 SYSTEM V2.00.459  
 Humidity:55.3%  
 Test Distance:2.900m [K=0.8810]  
 Remarks:

ISOLUX DIAGRAM

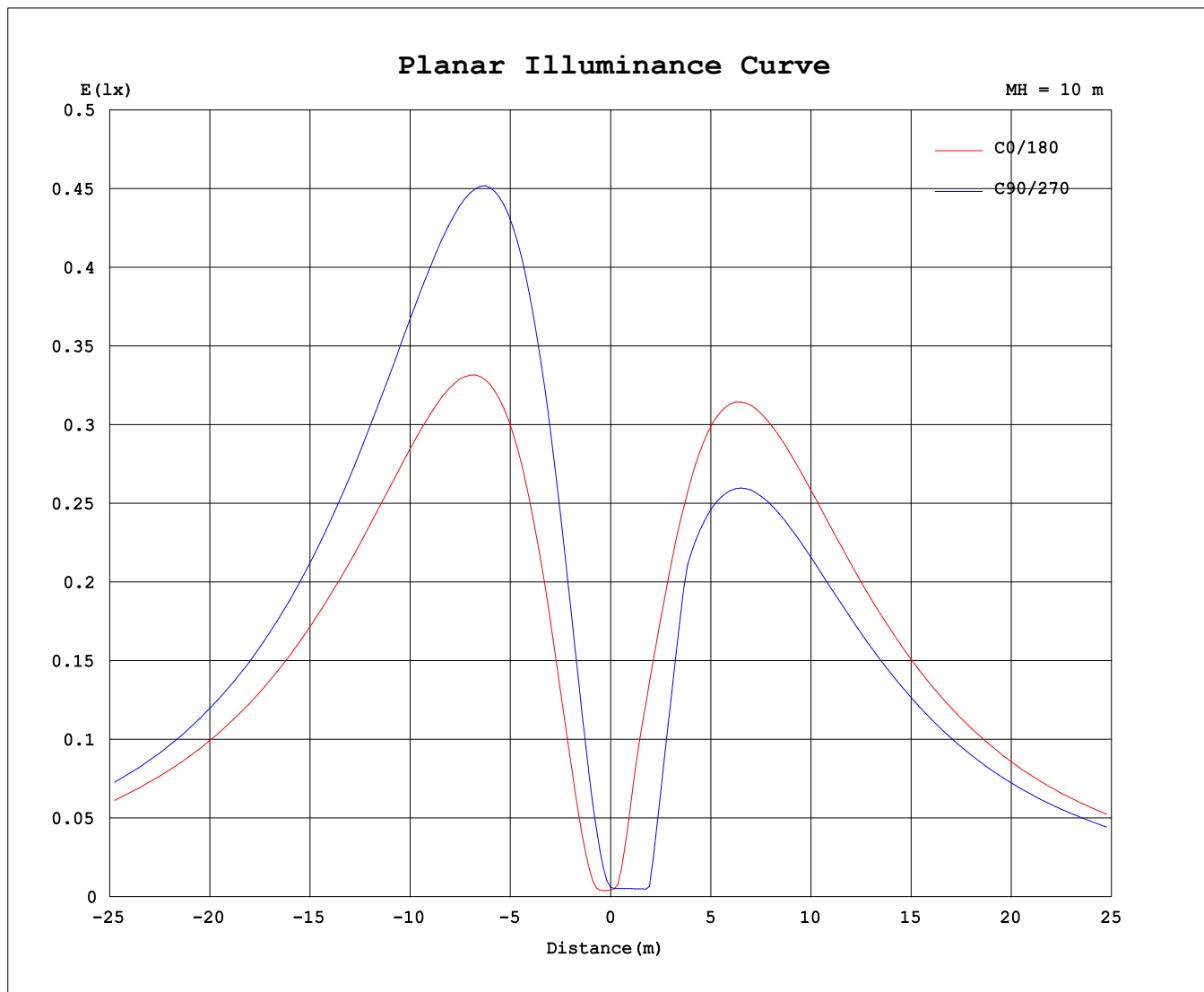
Test:U:120.0V I:0.2036A P:24.28W PF:0.9936 Freq:60.01Hz Lamp Flux:1081.17x1 lm		
NAME: PT27-4-3x8S-952C5-MVTD-BK 3500K	TYPE:	WEIGHT:
SPEC.:	DIM.:	SERIAL No.:
MFR.: FOSHAN LEDKEY LIGHTING CO.,LTD.	SUR.:	Shielding Angle:



C Range: 0 - 360DEG  
 C Interval: 22.5DEG  
 Test Speed: HIGH  
 Temperature:25.2°C  
 Operators:Dano  
 Test Date:2023-05-13

γ Range: 0 - 180DEG  
 γ Interval: 1.0DEG  
 Test System:EVERFINE GO-R5000\_V2 SYSTEM V2.00.459  
 Humidity:55.3%  
 Test Distance:2.900m [K=0.8810]  
 Remarks:

### Planar Illuminance Curve



C Range: 0 - 360DEG  
C Interval: 22.5DEG  
Test Speed: HIGH  
Temperature: 25.2°C  
Operators: Dano  
Test Date: 2023-05-13

γ Range: 0 - 180DEG  
γ Interval: 1.0DEG  
Test System: EVERFINE GO-R5000\_V2 SYSTEM V2.00.459  
Humidity: 55.3%  
Test Distance: 2.900m [K=0.8810]  
Remarks:

LUMINOUS DISTRIBUTION INTENSITY DATA

Test:U:120.0V I:0.2036A P:24.28W PF:0.9936 Freq:60.01Hz Lamp Flux:1081.17x1 lm		
NAME: PT27-4-3x8S-952C5-MVTD-BK 3500K	TYPE:	WEIGHT:
SPEC.:	DIM.:	SERIAL No.:
MFR.: FOSHAN LEDKEY LIGHTING CO.,LTD.	SUR.:	Shielding Angle:

Table--1

UNIT: cd

C (DEG) γ (DEG)	0	22.5	45	67.5	90	112.5	135	157.5	180	202.5	225	247.5	270	292.5	315	337.5			
0	0.55	0.55	0.55	0.55	0.55	0.55	0.55	0.55	0.55	0.55	0.55	0.55	0.55	0.55	0.55	0.55			
5	1.27	1.01	2.41	4.18	5.32	5.47	5.29	5.35	5.80	3.70	0.79	0.47	0.48	0.51	0.73	1.10			
10	8.65	5.36	6.49	11.4	14.8	15.4	13.5	13.2	16.0	16.9	12.8	4.97	0.48	1.55	4.67	7.14			
15	20.4	13.2	12.7	20.2	26.3	27.5	23.6	22.2	26.0	28.2	28.3	19.4	8.80	6.98	11.7	16.5			
20	33.8	22.6	19.9	28.6	38.4	40.2	34.3	32.0	37.0	39.8	39.9	32.9	21.2	16.4	19.9	26.6			
25	47.7	32.7	28.1	36.0	50.5	52.9	45.2	42.2	48.3	51.5	51.4	42.3	28.9	25.0	28.5	36.6			
30	61.5	42.9	37.3	42.0	62.2	65.4	55.8	52.2	59.6	63.2	62.9	51.5	35.6	31.6	36.6	46.8			
35	74.9	52.9	46.9	47.3	73.4	77.1	65.8	61.7	70.6	74.6	74.0	60.5	42.4	35.6	43.7	57.2			
40	87.8	62.5	56.1	52.8	83.9	88.2	75.0	70.6	81.0	85.6	84.8	69.1	48.9	40.6	51.0	67.2			
45	100	71.4	64.8	59.4	93.7	98.5	83.6	78.8	90.8	96.1	95.2	77.1	55.0	47.2	58.2	76.7			
50	112	79.7	72.8	66.7	102	108	91.3	86.1	99.7	106	105	84.7	60.6	53.2	65.0	85.6			
55	122	87.2	79.8	73.5	110	116	98.0	92.4	108	115	114	91.6	65.6	58.8	71.2	93.9			
60	132	94.1	86.0	79.5	117	123	104	97.7	115	124	123	97.9	70.2	63.9	76.8	101			
65	141	100	91.1	84.7	122	129	108	102	121	131	130	103	74.2	68.0	81.8	108			
70	148	105	95.2	88.7	126	134	111	105	126	138	137	108	77.5	71.6	86.0	114			
75	154	109	98.3	91.8	129	136	113	107	130	143	142	112	80.3	74.7	89.5	119			
80	159	112	100	93.8	129	138	114	108	132	147	146	115	82.3	77.2	92.1	123			
85	162	114	101	94.7	124	137	114	108	134	150	149	117	83.8	78.9	94.0	125			
90	164	115	101	94.0	121	135	112	107	134	151	150	117	84.2	79.6	94.9	126			
95	163	115	99.9	91.2	110	132	109	105	132	151	149	117	84.4	79.2	95.0	126			
100	162	114	97.5	87.3	97.9	128	106	101	130	149	147	115	83.5	78.1	94.2	125			
105	158	112	94.2	82.7	102	122	101	97.2	126	146	144	112	81.7	76.7	92.6	122			
110	153	108	90.0	77.4	101	115	95.6	92.1	121	141	139	109	79.2	75.0	90.1	119			
115	147	104	85.1	71.7	96.2	107	89.4	86.0	114	135	133	104	76.0	72.4	86.8	114			
120	140	99.4	79.4	65.5	89.8	98.6	82.5	79.1	107	127	125	98.1	72.0	69.0	82.8	108			
125	131	93.5	73.0	58.9	82.4	89.6	75.0	71.4	98.5	119	117	91.4	67.3	64.6	78.0	101			
130	121	86.8	66.0	52.0	73.9	80.1	67.1	63.0	89.2	109	107	84.0	62.0	59.5	72.5	93.5			
135	110	79.3	58.6	44.8	65.0	70.3	58.8	54.3	79.1	97.9	96.6	76.0	56.0	53.7	66.3	85.2			
140	98.8	71.2	50.6	37.6	55.8	60.2	50.2	45.2	68.3	85.8	85.3	67.5	49.5	47.5	59.1	76.1			
145	86.6	62.6	42.4	30.3	46.2	49.9	41.4	36.0	57.2	72.3	73.4	59.0	42.6	40.7	50.7	66.3			
150	73.8	53.3	34.2	23.1	36.4	39.5	32.4	26.9	45.9	57.5	60.6	50.2	35.6	33.7	41.4	55.6			
155	60.5	43.7	26.1	16.5	26.7	29.2	23.5	18.2	34.9	42.2	47.1	40.7	28.9	26.3	31.5	44.3			
160	46.9	33.8	18.9	11.1	17.3	19.1	15.0	10.3	24.4	27.5	33.2	30.2	21.8	18.9	22.2	32.9			
165	33.1	23.9	12.7	6.40	8.89	10.1	7.50	3.97	14.7	15.3	20.2	19.3	14.1	11.8	14.3	22.5			
170	19.8	14.4	7.81	2.87	2.37	2.91	1.91	0.45	6.25	6.15	9.20	9.05	6.56	3.71	7.10	13.2			
175	8.28	6.33	3.82	1.62	0.37	0.16	0.17	0.19	0.59	0.59	1.28	1.29	0.32	0.18	0.24	2.02			
180	0.03	0.00	0.00	0.00	0.09	0.15	0.17	0.15	0.16	0.15	0.16	0.15	0.16	0.16	0.17	0.17			

C Range: 0 - 360DEG  
 C Interval: 22.5DEG  
 Test Speed: HIGH  
 Temperature:25.2℃  
 Operators:Dano  
 Test Date:2023-05-13

γ Range: 0 - 180DEG  
 γ Interval: 1.0DEG  
 Test System:EVERFINE GO-R5000\_V2 SYSTEM V2.00.459  
 Humidity:55.3%  
 Test Distance:2.900m [K=0.8810]  
 Remarks: