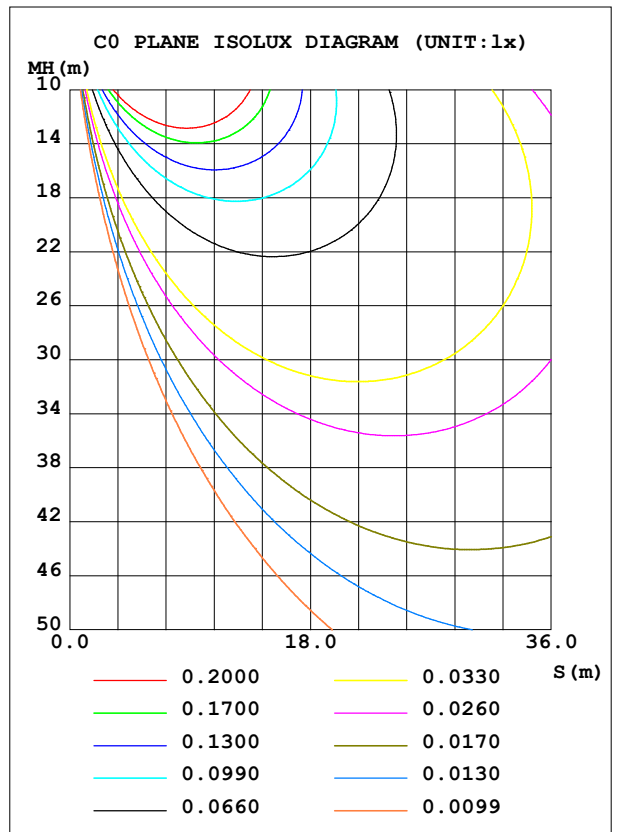
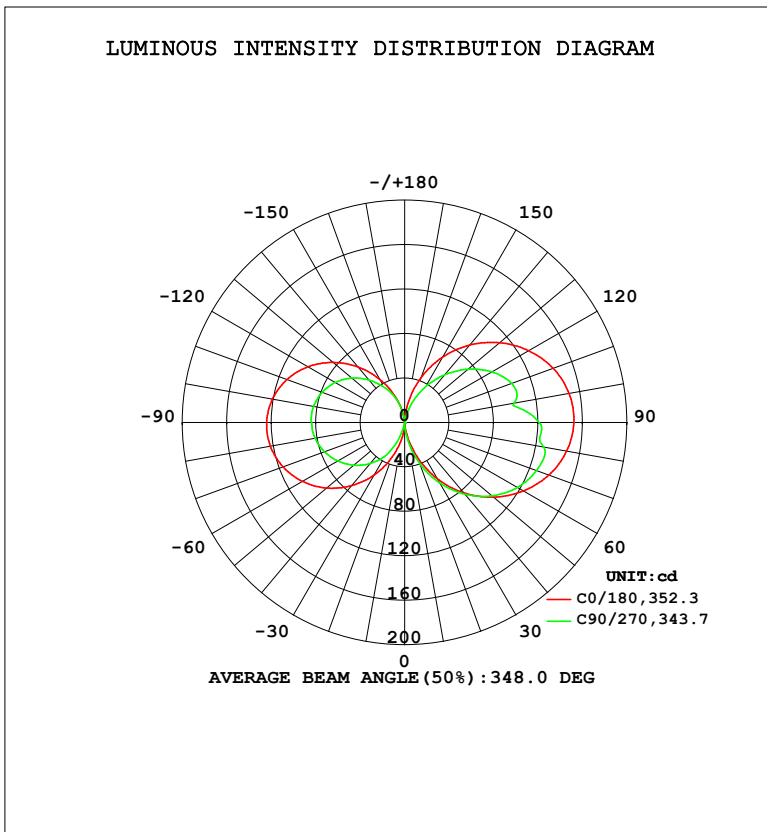


LUMINAIRE PHOTOMETRIC TEST REPORT

Test:U:120.1V I:0.2031A P:24.23W PF:0.9937 Freq:60.01Hz Lamp Flux:1058.58x1 lm		
NAME: PT27-4-3x8S-952C5-MVTD-BK 3000K	TYPE:	WEIGHT:
SPEC.:	DIM.:	SERIAL No.:
MFR.: FOSHAN LEDKEY LIGHTING CO.,LTD.	SUR.:	Shielding Angle:

DATA OF LAMP		PHOTOMETRIC DATA			
MODEL		Imax (cd)	152.4	S/MH (C0/180)	13.45
NOMINAL POWER (W)		LOR (%)	100.0	S/MH (C90/270)	11.86
RATED VOLTAGE (V)	120	TOTAL FLUX (lm)	1058.6	$\eta$ UP, DN (C0-180)	23.5, 26.8
NOMINAL FLUX (lm)	1058.58	CIE CLASS	DIFFUSE	$\eta$ UP, DN (C180-360)	25.2, 24.6
LAMPS INSIDE	1	$\eta$ up (%)	48.6	CIBSE SHR NOM	1.25
TEST VOLTAGE (V)	120	$\eta$ down (%)	51.4	CIBSE SHR MAX	1.35



C Range: 0 - 360DEG  
 C Interval: 22.5DEG  
 Test Speed: HIGH  
 Temperature: 25.2 °C  
 Operators: Dano  
 Test Date: 2023-05-13

$\gamma$  Range: 0 - 180DEG  
 $\gamma$  Interval: 1.0DEG  
 Test System: EVERFINE GO-R5000\_V2 SYSTEM V2.00.459  
 Humidity: 55.3%  
 Test Distance: 2.900m [K=0.8810]  
 Remarks:

ZONAL FLUX DIAGRAM

ZONAL FLUX DIAGRAM:

γ	C0	C45	C90	C135	C180	C225	C270	C315	γ	Φ zone	Φ total	%lum,lamp
10	8.856	6.836	15.10	13.43	13.99	10.53	0.4803	5.403	0- 10	0.4592	0.4592	0.04,0.04
20	32.46	20.32	38.74	34.49	33.31	37.63	16.17	20.99	10- 20	5.631	6.091	0.58,0.58
30	58.20	37.55	62.59	56.04	54.29	60.16	34.78	37.76	20- 30	18.40	24.49	2.31,2.31
40	82.56	55.92	84.29	75.41	74.23	81.69	48.25	52.34	30- 40	36.70	61.19	5.78,5.78
50	104.6	72.11	102.8	91.53	91.90	101.5	59.86	66.37	40- 50	58.56	119.7	11.3,11.3
60	123.4	84.77	117.1	103.7	106.2	119.0	69.48	78.16	50- 60	81.31	201.1	19,19
70	138.2	93.59	126.4	111.3	116.6	132.9	76.92	87.28	60- 70	101.7	302.8	28.6,28.6
80	148.1	98.36	127.1	114.2	122.7	142.3	81.85	93.22	70- 80	116.9	419.6	39.6,39.6
90	152.2	99.06	121.1	112.1	124.2	146.3	83.84	95.80	80- 90	124.0	543.7	51.4,51.4
100	150.2	95.17	99.78	105.7	121.0	144.3	83.22	94.83	90-100	122.2	665.9	62.9,62.9
110	142.3	87.60	102.7	95.40	112.9	136.6	79.17	90.40	100-110	112.9	778.8	73.6,73.6
120	129.0	76.98	90.98	82.14	100.4	123.5	72.18	82.78	110-120	97.04	875.8	82.7,82.7
130	111.6	63.72	74.66	66.70	84.24	105.8	62.24	72.34	120-130	76.32	952.1	89.9,89.9
140	90.94	48.52	56.04	49.77	65.19	84.75	49.85	58.70	130-140	53.84	1006	95,95
150	67.62	32.39	36.44	31.93	44.63	60.77	36.34	40.81	140-150	32.60	1039	98.1,98.1
160	42.50	17.42	17.16	14.62	24.62	34.02	22.74	21.66	150-160	15.32	1054	99.6,99.6
170	17.35	6.886	2.259	1.759	7.186	10.20	7.494	6.624	160-170	4.365	1058	100,100
180	0.0744	0	0.1037	0.1804	0.1540	0.1566	0.1580	0.1741	170-180	0.3158	1059	100,100
DEG	LUMINOUS INTENSITY:cd									UNIT:lm		

Conical surface Flux(90deg): 87.605 lm

%lum = 8.3%

%lamp = 8.3%

Conical surface Flux(120deg): 201.06 lm

%lum = 19.0%

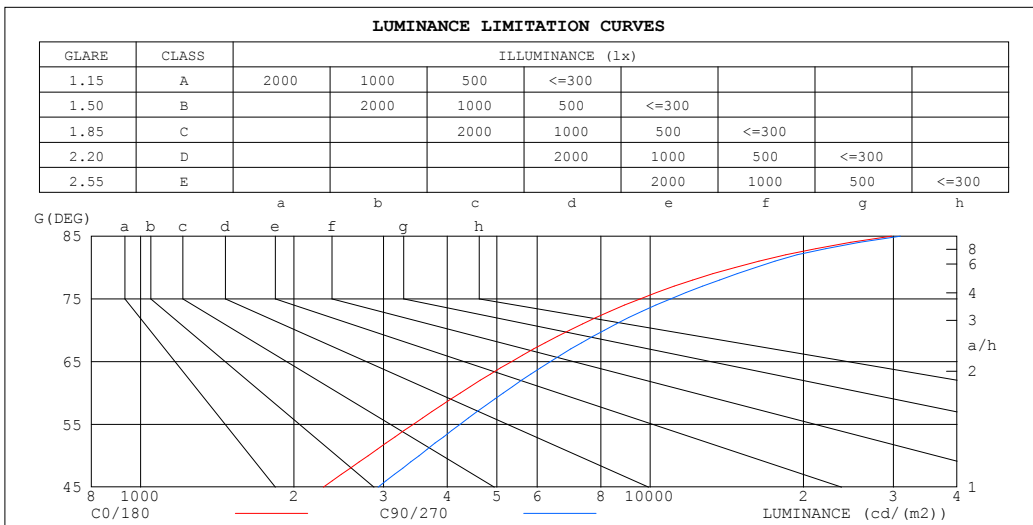
%lamp = 19.0%

C Range: 0 - 360DEG  
 C Interval: 22.5DEG  
 Test Speed: HIGH  
 Temperature:25.2℃  
 Operators:Dano  
 Test Date:2023-05-13

γ Range: 0 - 180DEG  
 γ Interval: 1.0DEG  
 Test System:EVERFINE GO-R5000\_V2 SYSTEM V2.00.459  
 Humidity:55.3%  
 Test Distance:2.900m [K=0.8810]  
 Remarks:

LUMINANCE LIMITATION CURVES

Test:U:120.1V I:0.2031A P:24.23W PF:0.9937 Freq:60.01Hz Lamp Flux:1058.58x1 lm		
NAME: PT27-4-3x8S-952C5-MVTD-BK 3000K	TYPE:	WEIGHT:
SPEC.:	DIM.:	SERIAL No.:
MFR.: FOSHAN LEDKEY LIGHTING CO.,LTD.	SUR.:	Shielding Angle:



LUMINANCE cd/(m2)		
G (DEG)	C0/180	C90/270
85	29770	31001
80	14663	16100
75	9557	10968
70	6949	8129
65	5344	6374
60	4243	5152
55	3429	4238
50	2798	3518
45	2284	2924

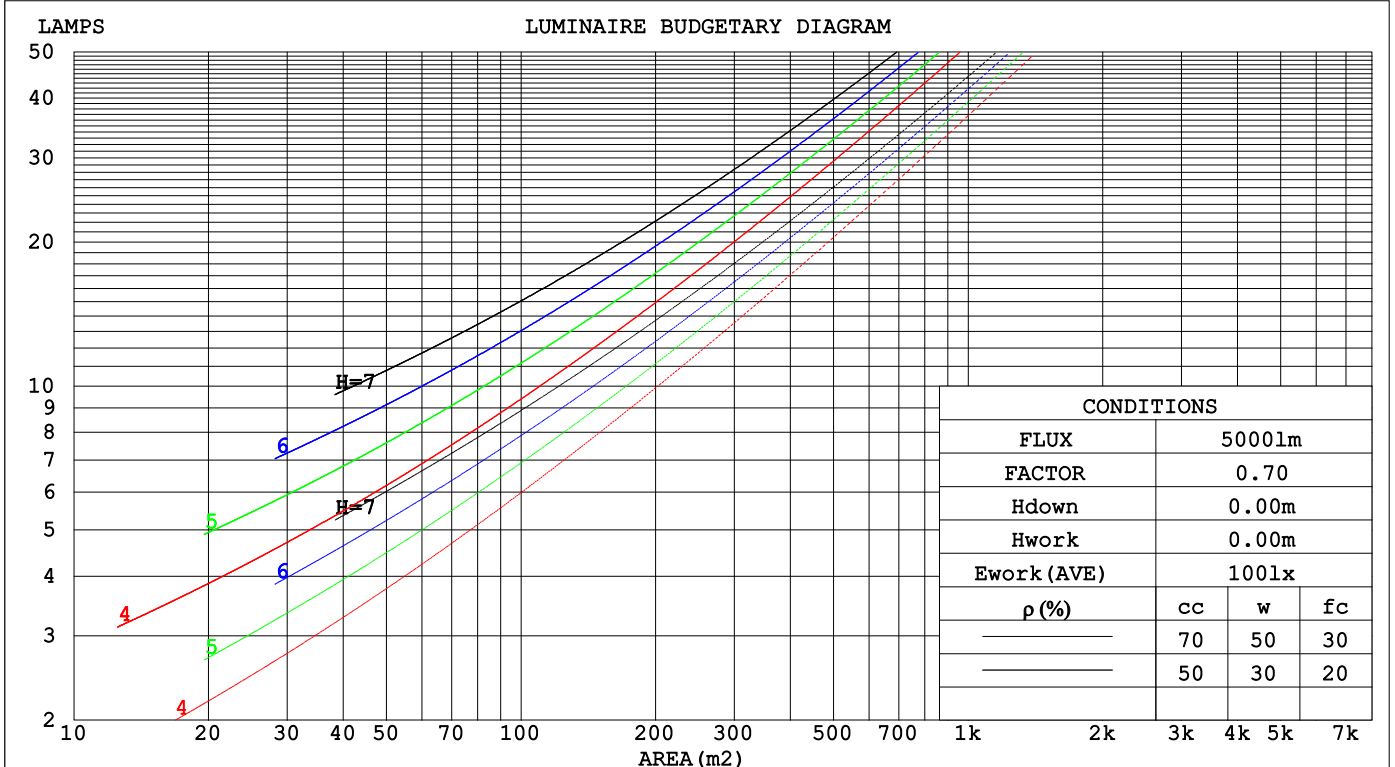
C Range: 0 - 360DEG  
 C Interval: 22.5DEG  
 Test Speed: HIGH  
 Temperature:25.2℃  
 Operators:Dano  
 Test Date:2023-05-13

γ Range: 0 - 180DEG  
 γ Interval: 1.0DEG  
 Test System:EVERFINE GO-R5000\_V2 SYSTEM V2.00.459  
 Humidity:55.3%  
 Test Distance:2.900m [K=0.8810]  
 Remarks:

**CU AND LUMINAIRE BUDGETARY ESTIMATE DIAGRAM**

Test:U:120.1V I:0.2031A P:24.23W PF:0.9937 Freq:60.01Hz Lamp Flux:1058.58x1 lm		
NAME: PT27-4-3x8S-952C5-MVTD-BK 3000K	TYPE:	WEIGHT:
SPEC.:	DIM.:	SERIAL No.:
MFR.: FOSHAN LEDKEY LIGHTING CO.,LTD.	SUR.:	Shielding Angle:

$\rho_{cc}$	80%			70%			50%			30%			10%			0
$\rho_w$	50%	30%	10%	50%	30%	10%	50%	30%	10%	50%	30%	10%	50%	30%	10%	0
$\rho_{fc}$	20%			20%			20%			20%			20%			0
RCR	RCR:Room Cavity Ratio						Coefficients of Utilization(CU)									
0.0	1.07	1.07	1.07	.99	.99	.99	.84	.84	.84	.70	.70	.70	.57	.57	.57	.51
1.0	.85	.79	.73	.78	.72	.67	.65	.60	.56	.52	.49	.46	.41	.39	.36	.31
2.0	.71	.62	.55	.65	.57	.51	.53	.47	.42	.43	.38	.34	.33	.29	.26	.21
3.0	.60	.51	.43	.55	.46	.40	.45	.38	.33	.36	.30	.26	.27	.23	.20	.15
4.0	.52	.42	.35	.48	.39	.32	.39	.32	.26	.31	.25	.21	.23	.19	.15	.11
5.0	.46	.36	.29	.42	.33	.26	.34	.27	.21	.27	.21	.17	.20	.16	.12	.09
6.0	.40	.31	.24	.37	.28	.22	.30	.23	.18	.24	.18	.14	.18	.13	.10	.07
7.0	.36	.27	.20	.33	.24	.19	.27	.20	.15	.21	.16	.12	.16	.12	.08	.06
8.0	.32	.23	.17	.30	.21	.16	.24	.18	.13	.19	.14	.10	.14	.10	.07	.05
9.0	.29	.21	.15	.27	.19	.14	.22	.16	.11	.17	.12	.09	.13	.09	.06	.04
10.0	.27	.19	.13	.24	.17	.12	.20	.14	.10	.16	.11	.08	.12	.08	.05	.03



C Range: 0 - 360DEG  
 C Interval: 22.5DEG  
 Test Speed: HIGH  
 Temperature:25.2°C  
 Operators:Dano  
 Test Date:2023-05-13

$\gamma$  Range: 0 - 180DEG  
 $\gamma$  Interval: 1.0DEG  
 Test System:EVERFINE GO-R5000\_V2 SYSTEM V2.00.459  
 Humidity:55.3%  
 Test Distance:2.900m [K=0.8810]  
 Remarks:

WEC AND CCEC

Test:U:120.1V I:0.2031A P:24.23W PF:0.9937 Freq:60.01Hz Lamp Flux:1058.58x1 lm		
NAME: PT27-4-3x8S-952C5-MVTD-BK 3000K	TYPE:	WEIGHT:
SPEC.:	DIM.:	SERIAL No.:
MFR.: FOSHAN LEDKEY LIGHTING CO.,LTD.	SUR.:	Shielding Angle:

ρcc	80%			70%			50%			30%			10%			0
ρw	50%	30%	10%	50%	30%	10%	50%	30%	10%	50%	30%	10%	50%	30%	10%	0
ρfc	20%			20%			20%			20%			20%			0
RCR	RCR:Room Cavity Ratio						Wall Exitance Coefficients(WEC)									
0.0																
1.0	.446	.254	.080	.424	.242	.077	.383	.220	.070	.345	.199	.064	.309	.179	.058	
2.0	.366	.201	.062	.346	.191	.059	.308	.171	.053	.273	.153	.048	.241	.136	.043	
3.0	.316	.168	.050	.298	.159	.048	.263	.142	.043	.231	.126	.039	.201	.111	.034	
4.0	.279	.145	.043	.262	.137	.041	.230	.122	.036	.201	.108	.033	.173	.094	.029	
5.0	.250	.128	.037	.235	.121	.035	.206	.107	.032	.178	.094	.028	.153	.082	.025	
6.0	.227	.114	.033	.213	.108	.031	.186	.095	.028	.161	.083	.025	.137	.072	.021	
7.0	.208	.103	.029	.195	.097	.028	.170	.086	.025	.146	.075	.022	.124	.065	.019	
8.0	.191	.094	.026	.179	.088	.025	.156	.078	.022	.134	.068	.020	.114	.058	.017	
9.0	.178	.086	.024	.166	.081	.023	.145	.072	.020	.124	.062	.018	.105	.053	.015	
10.0	.165	.079	.022	.155	.075	.021	.135	.066	.019	.116	.057	.016	.098	.049	.014	

ρcc	80%			70%			50%			30%			10%			0
ρw	50%	30%	10%	50%	30%	10%	50%	30%	10%	50%	30%	10%	50%	30%	10%	0
ρfc	20%			20%			20%			20%			20%			0
RCR	RCR:Room Cavity Ratio						Ceiling Cavity Exitance Coefficients(CCEC)									
0.0	.561	.561	.561	.480	.480	.480	.327	.327	.327	.188	.188	.188	.060	.060	.060	
1.0	.563	.529	.497	.482	.454	.428	.330	.312	.296	.190	.181	.172	.061	.058	.056	
2.0	.558	.508	.465	.478	.437	.402	.328	.302	.280	.189	.176	.164	.061	.057	.054	
3.0	.552	.493	.446	.473	.425	.387	.325	.295	.271	.187	.172	.160	.060	.056	.052	
4.0	.544	.481	.434	.467	.416	.377	.321	.290	.265	.186	.170	.157	.060	.055	.052	
5.0	.537	.473	.425	.461	.409	.370	.317	.286	.261	.184	.168	.155	.059	.055	.051	
6.0	.529	.465	.420	.455	.403	.365	.314	.282	.258	.182	.166	.154	.059	.054	.051	
7.0	.522	.459	.415	.449	.398	.362	.310	.279	.256	.180	.164	.153	.058	.054	.050	
8.0	.515	.454	.412	.444	.394	.359	.307	.277	.255	.179	.163	.152	.058	.053	.050	
9.0	.509	.450	.409	.439	.390	.357	.304	.274	.254	.177	.162	.151	.057	.053	.050	
10.0	.503	.446	.407	.434	.387	.356	.301	.272	.253	.176	.161	.151	.057	.053	.050	

C Range: 0 - 360DEG  
 C Interval: 22.5DEG  
 Test Speed: HIGH  
 Temperature:25.2℃  
 Operators:Dano  
 Test Date:2023-05-13

γ Range: 0 - 180DEG  
 γ Interval: 1.0DEG  
 Test System:EVERFINE GO-R5000\_V2 SYSTEM V2.00.459  
 Humidity:55.3%  
 Test Distance:2.900m [K=0.8810]  
 Remarks:

UGR(Unified Glare Rating) Table

Test:U:120.1V I:0.2031A P:24.23W PF:0.9937 Freq:60.01Hz										
Lamp Flux:1058.58x1 lm										
NAME: PT27-4-3x8S-952C5-MVTD-BK 3000K					TYPE:			WEIGHT:		
SPEC.:					DIM.:			SERIAL No.:		
MFR.: FOSHAN LEDKEY LIGHTING CO.,LTD.					SUR.:			Shielding Angle:		
ceiling/cavity	0.7	0.7	0.5	0.5	0.3	0.7	0.7	0.5	0.5	0.3
walls	0.5	0.3	0.5	0.3	0.3	0.5	0.3	0.5	0.3	0.3
working plane	0.2	0.2	0.2	0.2	0.2	0.2	0.2	0.2	0.2	0.2
Room dimensions	Viewed crosswise					Viewed endwise				
x = 2H y = 2H	9.8	12.0	11.5	13.8	16.2	13.1	15.3	14.8	17.1	19.5
3H	13.9	16.0	15.7	17.8	20.3	16.7	18.7	18.5	20.6	23.0
4H	16.1	18.1	17.9	19.9	22.4	18.5	20.5	20.4	22.4	24.8
6H	18.5	20.3	20.3	22.2	24.7	20.5	22.3	22.4	24.2	26.7
8H	19.8	21.5	21.6	23.5	26.0	21.5	23.3	23.4	25.2	27.7
12H	21.2	22.9	23.1	24.9	27.4	22.6	24.3	24.5	26.3	28.8
4H 2H	10.5	12.4	12.3	14.3	16.7	13.3	15.2	15.1	17.1	19.6
3H	14.5	16.2	16.4	18.2	20.7	17.2	18.9	19.1	20.9	23.4
4H	16.8	18.3	18.6	20.3	22.8	19.3	20.9	21.2	22.9	25.4
6H	19.3	20.7	21.2	22.7	25.2	21.6	23.0	23.5	25.0	27.5
8H	20.6	22.0	22.6	24.0	26.6	22.7	24.0	24.6	26.0	28.6
12H	22.2	23.5	24.2	25.5	28.1	24.0	25.2	25.9	27.2	29.8
8H 4H	17.2	18.6	19.2	20.6	23.2	19.6	21.0	21.6	23.0	25.6
6H	19.9	21.0	21.9	23.1	25.7	22.2	23.3	24.2	25.4	28.0
8H	21.4	22.4	23.4	24.5	27.1	23.6	24.6	25.6	26.7	29.3
12H	23.2	24.1	25.2	26.2	28.9	25.2	26.1	27.2	28.2	30.9
12H 4H	17.4	18.6	19.3	20.6	23.2	19.7	20.9	21.6	22.9	25.6
6H	20.1	21.1	22.1	23.2	25.9	22.3	23.4	24.3	25.4	28.1
8H	21.7	22.6	23.7	24.7	27.4	23.9	24.8	25.9	26.9	29.6
CIE190: 2010										

CIE190: 2010  
Area: 0.0494 m2

C Range: 0 - 360DEG  
C Interval: 22.5DEG  
Test Speed: HIGH  
Temperature:25.2℃  
Operators:Dano  
Test Date:2023-05-13

γ Range: 0 - 180DEG  
γ Interval: 1.0DEG  
Test System:EVERFINE GO-R5000\_V2 SYSTEM V2.00.459  
Humidity:55.3%  
Test Distance:2.900m [K=0.8810]  
Remarks:

**UTILIZATION FACTORS TABLE**

Test:U:120.1V I:0.2031A P:24.23W PF:0.9937 Freq:60.01Hz Lamp Flux:1058.58x1 lm		
NAME: PT27-4-3x8S-952C5-MVTD-BK 3000K	TYPE:	WEIGHT:
SPEC.:	DIM.:	SERIAL No.:
MFR.: FOSHAN LEDKEY LIGHTING CO.,LTD.	SUR.:	Shielding Angle:

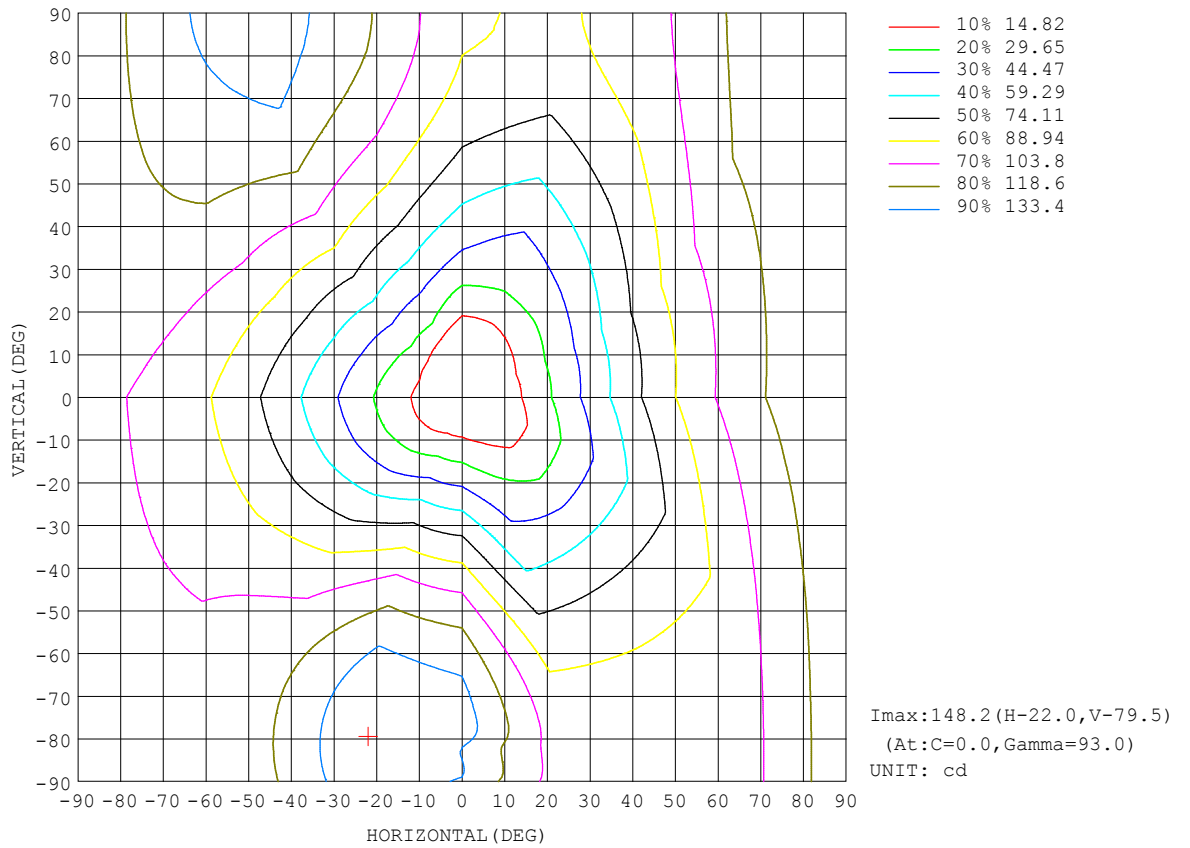
REFLECTANCE										
Ceiling	0.8	0.8	0.8	0.7	0.7	0.7	0.5	0.5	0.5	0
Walls	0.7	0.5	0.3	0.7	0.5	0.3	0.7	0.5	0.3	0
Working plane	0.2	0.2	0.2	0.2	0.2	0.2	0.2	0.2	0.2	0
ROOM INDEX	UTILIZATION FACTORS (PERCENT) $k(RI) \times RCR = 5$									
k = 0.60	33	20	13	32	19	12	28	18	11	4
0.80	42	27	18	39	26	18	34	23	16	6
1.00	49	34	24	46	32	23	40	30	21	9
1.25	56	41	31	52	38	29	45	33	26	12
1.50	61	46	36	57	43	34	48	38	30	14
2.00	69	55	45	64	52	42	54	44	37	19
2.50	75	62	52	69	57	48	58	49	42	22
3.00	79	67	57	73	62	53	61	53	46	25
4.00	84	74	65	78	69	61	66	58	52	29
5.00	88	79	71	81	73	66	68	62	57	31
ROOM INDEX	UF(total)									Direct
According to DIN EN 13032-2 2004			Suspended				SHRNOM = 1.25			

C Range: 0 - 360DEG  
 C Interval: 22.5DEG  
 Test Speed: HIGH  
 Temperature:25.2°C  
 Operators:Dano  
 Test Date:2023-05-13

$\gamma$  Range: 0 - 180DEG  
 $\gamma$  Interval: 1.0DEG  
 Test System:EVERFINE GO-R5000\_V2 SYSTEM V2.00.459  
 Humidity:55.3%  
 Test Distance:2.900m [K=0.8810]  
 Remarks:

ISOCANDELA DIAGRAM

Test:U:120.1V I:0.2031A P:24.23W PF:0.9937 Freq:60.01Hz Lamp Flux:1058.58x1 lm		
NAME: PT27-4-3x8S-952C5-MVTD-BK 3000K	TYPE:	WEIGHT:
SPEC.:	DIM.:	SERIAL No.:
MFR.: FOSHAN LEDKEY LIGHTING CO.,LTD.	SUR.:	Shielding Angle:



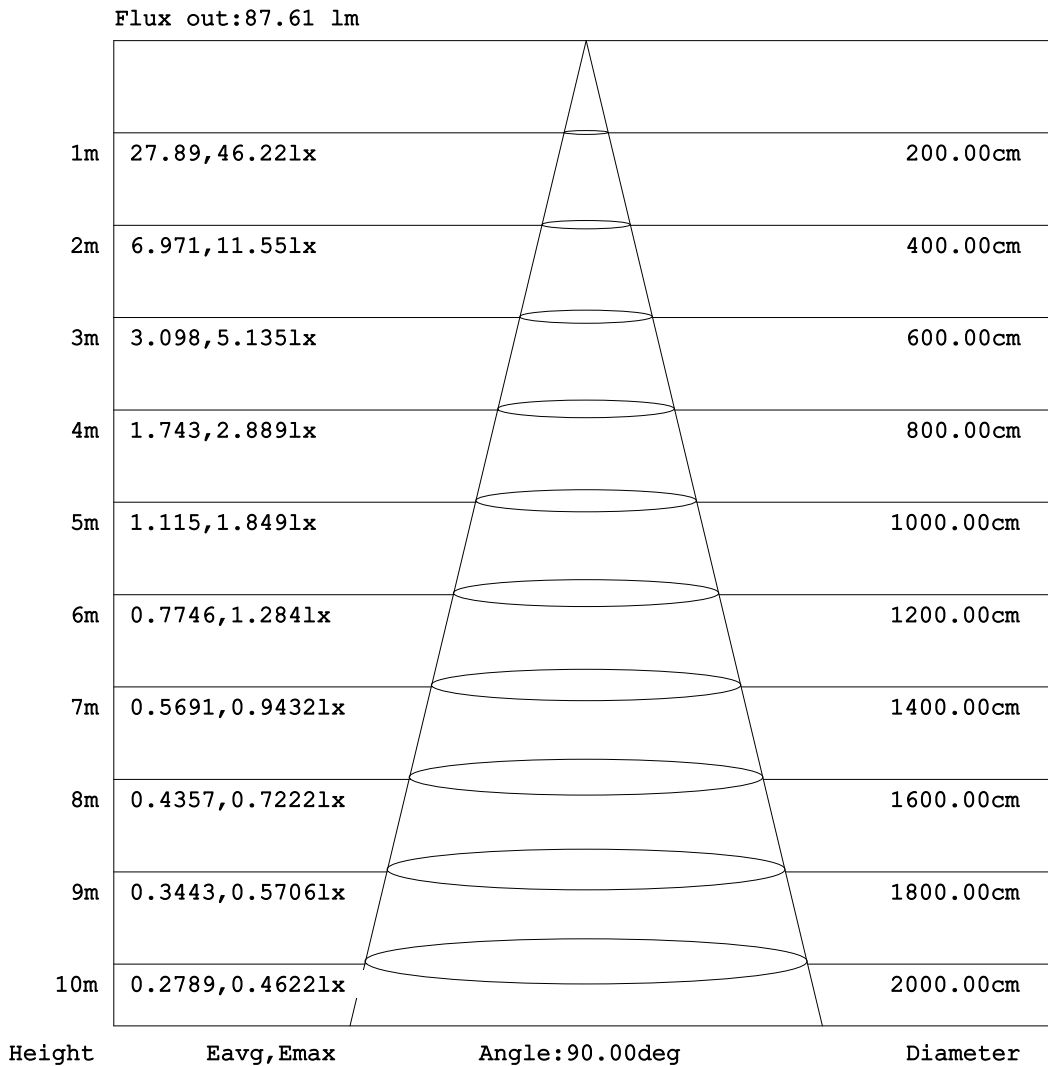
C Range: 0 - 360DEG  
C Interval: 22.5DEG  
Test Speed: HIGH  
Temperature:25.2°C  
Operators:Dano  
Test Date:2023-05-13

γ Range: 0 - 180DEG  
γ Interval: 1.0DEG  
Test System:EVERFINE GO-R5000\_V2 SYSTEM V2.00.459  
Humidity:55.3%  
Test Distance:2.900m [K=0.8810]  
Remarks:



**AAI Figure**

Test:U:120.1V I:0.2031A P:24.23W PF:0.9937 Freq:60.01Hz Lamp Flux:1058.58x1 lm		
NAME: PT27-4-3x8S-952C5-MVTD-BK 3000K	TYPE:	WEIGHT:
SPEC.:	DIM.:	SERIAL No.:
MFR.: FOSHAN LEDKEY LIGHTING CO.,LTD.	SUR.:	Shielding Angle:



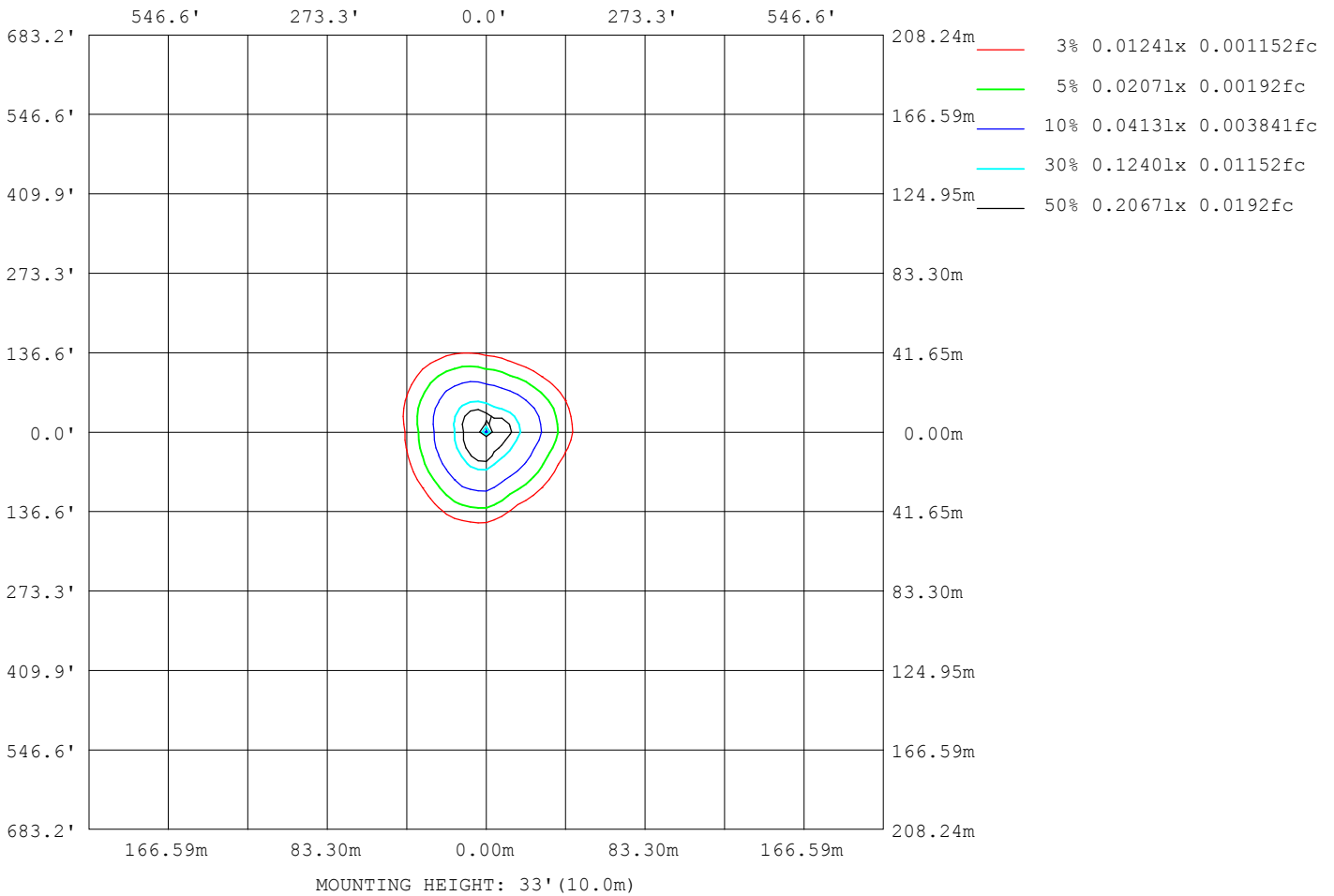
Note:The Curves indicate the illuminated area and the average illumination when the luminaire is at different distance.

C Range: 0 - 360DEG  
 C Interval: 22.5DEG  
 Test Speed: HIGH  
 Temperature:25.2℃  
 Operators:Dano  
 Test Date:2023-05-13

γ Range: 0 - 180DEG  
 γ Interval: 1.0DEG  
 Test System:EVERFINE GO-R5000\_V2 SYSTEM V2.00.459  
 Humidity:55.3%  
 Test Distance:2.900m [K=0.8810]  
 Remarks:

ISOLUX DIAGRAM

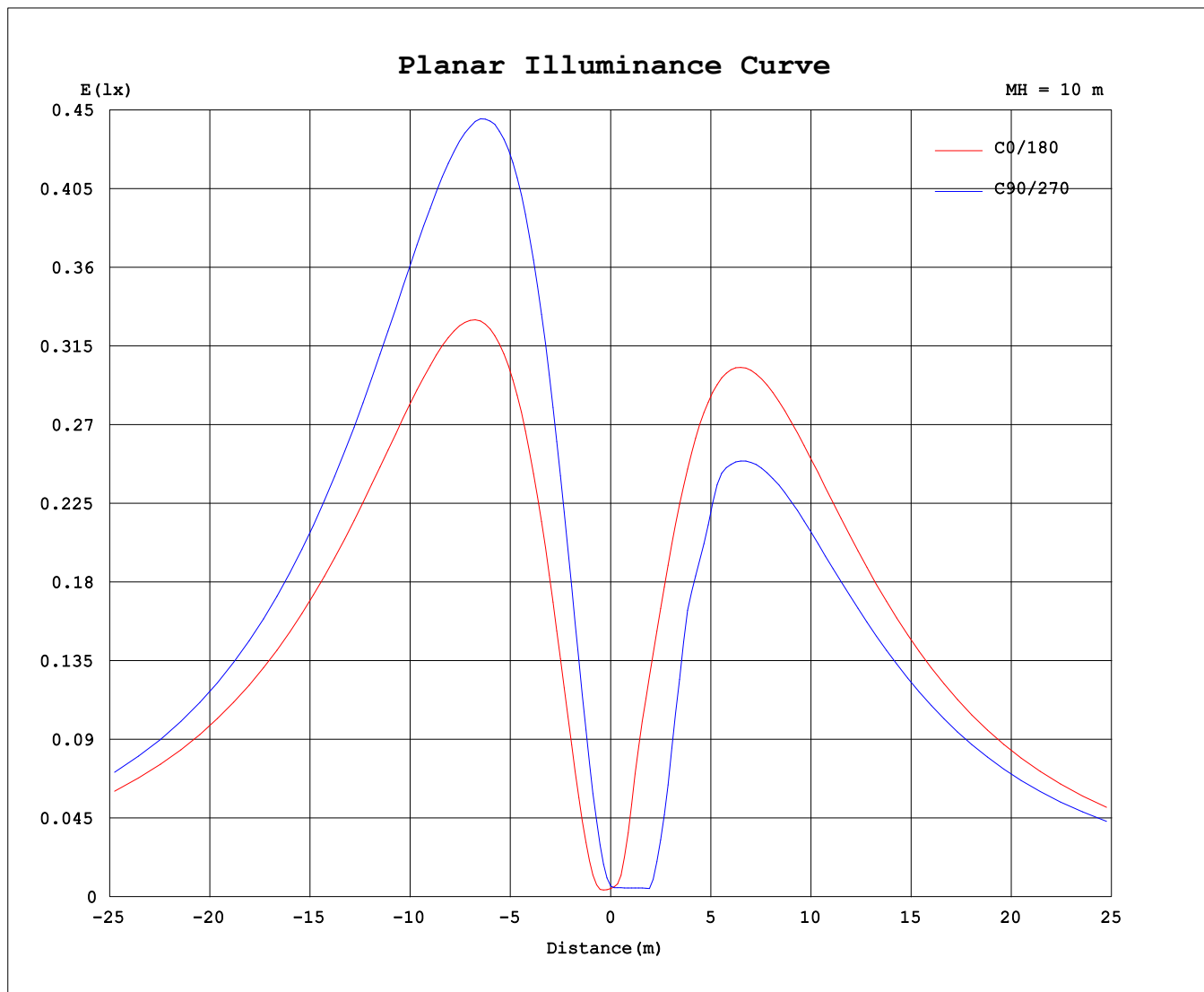
Test:U:120.1V I:0.2031A P:24.23W PF:0.9937 Freq:60.01Hz Lamp Flux:1058.58x1 lm		
NAME: PT27-4-3x8S-952C5-MVTD-BK 3000K	TYPE:	WEIGHT:
SPEC.:	DIM.:	SERIAL No.:
MFR.: FOSHAN LEDKEY LIGHTING CO.,LTD.	SUR.:	Shielding Angle:



C Range: 0 - 360DEG  
C Interval: 22.5DEG  
Test Speed: HIGH  
Temperature:25.2°C  
Operators:Dano  
Test Date:2023-05-13

γ Range: 0 - 180DEG  
γ Interval: 1.0DEG  
Test System:EVERFINE GO-R5000\_V2 SYSTEM V2.00.459  
Humidity:55.3%  
Test Distance:2.900m [K=0.8810]  
Remarks:

### Planar Illuminance Curve



C Range: 0 - 360DEG  
C Interval: 22.5DEG  
Test Speed: HIGH  
Temperature: 25.2°C  
Operators: Dano  
Test Date: 2023-05-13

γ Range: 0 - 180DEG  
γ Interval: 1.0DEG  
Test System: EVERFINE GO-R5000\_V2 SYSTEM V2.00.459  
Humidity: 55.3%  
Test Distance: 2.900m [K=0.8810]  
Remarks:

LUMINOUS DISTRIBUTION INTENSITY DATA

Test:U:120.1V I:0.2031A P:24.23W PF:0.9937 Freq:60.01Hz Lamp Flux:1058.58x1 lm		
NAME: PT27-4-3x8S-952C5-MVTD-BK 3000K	TYPE:	WEIGHT:
SPEC.:	DIM.:	SERIAL No.:
MFR.: FOSHAN LEDKEY LIGHTING CO.,LTD.	SUR.:	Shielding Angle:

Table--1

UNIT: cd

C (DEG) γ (DEG)	0	22.5	45	67.5	90	112.5	135	157.5	180	202.5	225	247.5	270	292.5	315	337.5			
0	0.57	0.57	0.57	0.57	0.57	0.57	0.57	0.57	0.57	0.57	0.57	0.57	0.57	0.57	0.57	0.57			
5	1.50	1.22	2.53	4.32	5.52	5.66	5.11	4.71	4.37	2.24	0.48	0.46	0.49	0.51	0.94	1.42			
10	8.86	5.77	6.84	11.6	15.1	15.6	13.4	12.4	14.0	14.4	10.5	3.24	0.48	2.01	5.40	8.00			
15	19.9	13.3	13.1	20.1	26.6	27.5	23.6	21.4	23.2	25.3	26.4	16.9	4.80	7.30	12.6	17.6			
20	32.5	22.3	20.3	28.2	38.7	40.0	34.5	31.2	33.3	36.3	37.6	30.9	16.2	16.5	21.0	27.7			
25	45.4	31.8	28.4	35.3	50.8	52.6	45.4	41.2	43.8	47.3	49.0	40.0	25.0	24.9	29.8	37.7			
30	58.2	41.5	37.5	41.1	62.6	64.8	56.0	51.2	54.3	58.4	60.2	49.1	34.8	30.8	37.8	47.9			
35	70.6	50.9	46.9	46.5	73.7	76.5	66.1	60.7	64.5	69.2	71.1	57.8	41.6	34.8	45.0	58.2			
40	82.6	59.8	55.9	52.3	84.3	87.4	75.4	69.7	74.2	79.7	81.7	66.3	48.2	39.7	52.3	68.2			
45	93.9	68.2	64.4	59.0	94.0	97.6	83.9	77.8	83.4	89.6	91.8	74.2	54.3	44.9	59.6	77.6			
50	105	76.0	72.1	66.1	103	107	91.5	85.1	91.9	99.1	102	81.6	59.9	50.3	66.4	86.5			
55	114	83.0	78.9	72.7	110	115	98.1	91.5	99.5	108	111	88.5	64.9	55.9	72.6	94.8			
60	123	89.3	84.8	78.6	117	122	104	96.9	106	116	119	94.8	69.5	60.7	78.2	102			
65	131	94.8	89.7	83.5	122	128	108	101	112	123	126	100	73.5	65.5	83.0	109			
70	138	99.4	93.6	87.4	126	132	111	104	117	130	133	105	76.9	69.8	87.3	115			
75	144	103	96.4	90.3	129	135	113	107	120	135	138	109	79.8	73.5	90.6	119			
80	148	106	98.4	92.1	127	136	114	108	123	139	142	112	81.8	76.2	93.2	123			
85	151	108	99.3	92.9	123	136	114	108	124	142	145	113	83.4	77.8	95.0	125			
90	152	108	99.1	92.2	121	134	112	106	124	143	146	114	83.8	78.5	95.8	126			
95	152	108	97.6	89.3	111	130	109	104	123	143	146	114	84.1	78.1	95.7	126			
100	150	107	95.2	85.4	99.8	126	106	101	121	142	144	113	83.2	77.1	94.8	125			
105	147	105	91.8	80.7	105	120	101	97.2	118	139	141	110	81.5	75.9	93.1	122			
110	142	102	87.6	75.4	103	113	95.4	92.2	113	134	137	107	79.2	74.2	90.4	118			
115	136	97.8	82.6	69.7	97.7	106	89.1	86.3	107	129	131	102	76.1	71.7	87.0	113			
120	129	93.0	77.0	63.5	91.0	97.1	82.1	79.6	100	122	123	96.6	72.2	68.3	82.8	107			
125	121	87.3	70.7	57.0	83.2	88.2	74.6	72.1	92.7	113	115	90.2	67.6	64.0	77.9	100			
130	112	80.9	63.7	50.1	74.7	78.8	66.7	63.9	84.2	104	106	83.1	62.2	58.9	72.3	92.7			
135	102	73.9	56.3	43.1	65.5	69.1	58.4	55.1	75.0	94.0	95.7	75.3	56.4	53.3	66.0	84.3			
140	90.9	66.2	48.5	35.9	56.0	59.1	49.8	46.1	65.2	82.6	84.7	67.2	49.9	47.1	58.7	75.1			
145	79.6	58.0	40.5	28.7	46.4	48.9	40.9	36.8	55.0	69.9	73.1	59.1	43.1	40.4	50.2	65.2			
150	67.6	49.3	32.4	21.7	36.4	38.7	31.9	27.7	44.6	56.1	60.8	50.6	36.3	33.5	40.8	54.5			
155	55.2	40.2	24.6	15.4	26.6	28.4	23.1	18.9	34.5	41.5	47.6	41.3	29.8	26.3	30.9	43.1			
160	42.5	30.8	17.4	10.2	17.2	18.5	14.6	11.1	24.6	27.7	34.0	31.1	22.7	19.1	21.7	31.9			
165	29.7	21.5	11.5	5.72	8.67	9.67	7.22	4.63	15.3	15.9	21.2	20.2	15.2	12.1	13.8	21.5			
170	17.3	12.8	6.89	2.30	2.26	2.68	1.76	0.70	7.19	7.07	10.20	10.1	7.49	3.94	6.62	12.3			
175	6.90	5.27	3.18	1.21	0.24	0.16	0.17	0.19	1.08	1.05	1.92	1.93	0.41	0.18	0.24	1.69			
180	0.07	0.00	0.00	0.00	0.10	0.15	0.18	0.15	0.15	0.14	0.16	0.15	0.16	0.16	0.17	0.18			

C Range: 0 - 360DEG  
 C Interval: 22.5DEG  
 Test Speed: HIGH  
 Temperature:25.2℃  
 Operators:Dano  
 Test Date:2023-05-13

γ Range: 0 - 180DEG  
 γ Interval: 1.0DEG  
 Test System:EVERFINE GO-R5000\_V2 SYSTEM V2.00.459  
 Humidity:55.3%  
 Test Distance:2.900m [K=0.8810]  
 Remarks: