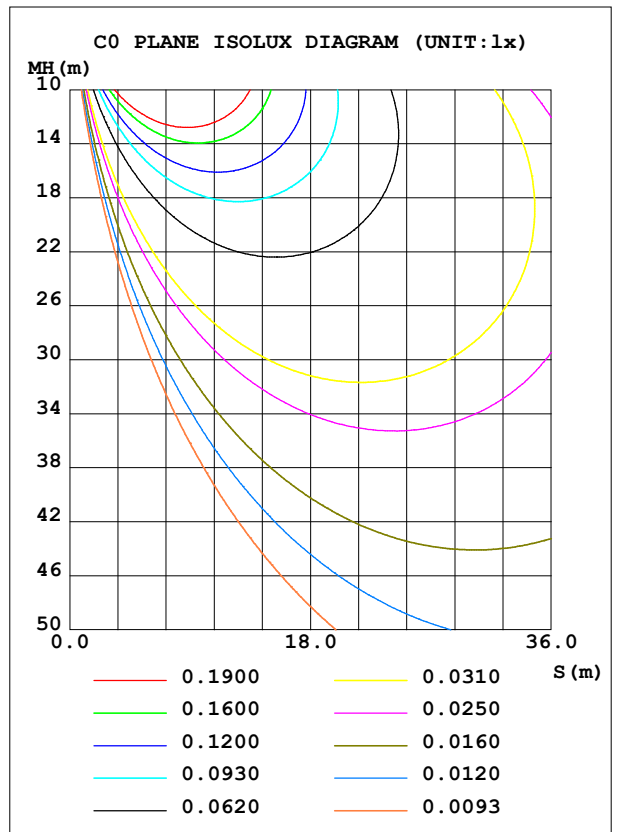
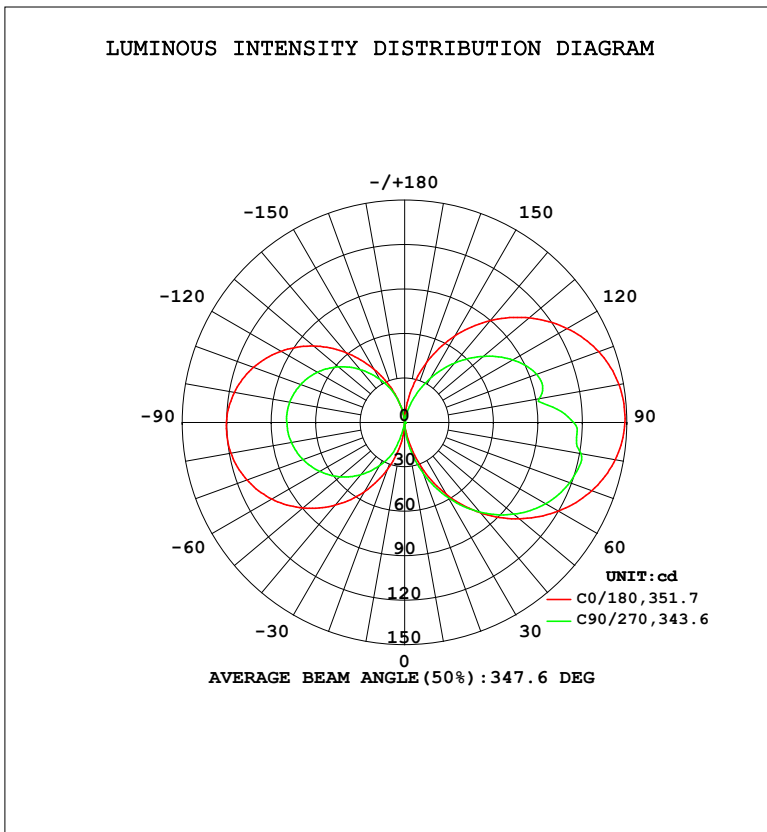


LUMINAIRE PHOTOMETRIC TEST REPORT

Test:U:120.0V I:0.2014A P:24.02W PF:0.9935 Freq:60.01Hz Lamp Flux:1007.66x1 lm		
NAME: PT27-4-3x8S-952C5-MVTD-BK 2700K	TYPE:	WEIGHT:
SPEC.:	DIM.:	SERIAL No.:
MFR.: FOSHAN LEDKEY LIGHTING CO.,LTD.	SUR.:	Shielding Angle:

DATA OF LAMP		PHOTOMETRIC DATA				Eff: 41.94 lm/W
MODEL		Imax (cd)	148.7	S/MH (C0/180)		13.68
NOMINAL POWER (W)		LOR (%)	100.0	S/MH (C90/270)		11.86
RATED VOLTAGE (V)	120	TOTAL FLUX (lm)	1007.7	η UP, DN (C0-180)		23.5, 26.7
NOMINAL FLUX (lm)	1007.66	CIE CLASS	DIFFUSE	η UP, DN (C180-360)		25.1, 24.7
LAMPS INSIDE	1	η up (%)	48.6	CIBSE SHR NOM		1.25
TEST VOLTAGE (V)	120	η down (%)	51.4	CIBSE SHR MAX		1.35



C Range: 0 - 360DEG
 C Interval: 22.5DEG
 Test Speed: HIGH
 Temperature: 25.2 °C
 Operators: Dano
 Test Date: 2023-05-13

γ Range: 0 - 180DEG
 γ Interval: 1.0DEG
 Test System: EVERFINE GO-R5000_V2 SYSTEM V2.00.459
 Humidity: 55.3%
 Test Distance: 2.900m [K=0.8810]
 Remarks:

ZONAL FLUX DIAGRAM

ZONAL FLUX DIAGRAM:

γ	C0	C45	C90	C135	C180	C225	C270	C315	γ	Φ zone	Φ total	%lum,lamp
10	7.774	6.102	14.00	12.64	14.46	10.79	0.4548	4.523	0- 10	0.4366	0.4366	0.04,0.04
20	30.54	18.58	36.16	32.20	33.29	36.83	19.12	18.93	10- 20	5.393	5.830	0.58,0.58
30	55.76	34.68	58.52	52.30	53.64	58.23	33.47	34.86	20- 30	17.57	23.40	2.32,2.32
40	79.68	52.20	78.94	70.46	72.90	78.56	46.04	48.49	30- 40	34.93	58.33	5.79,5.79
50	101.2	67.66	96.35	85.63	89.85	97.24	57.11	61.73	40- 50	55.78	114.1	11.3,11.3
60	119.7	79.88	109.8	97.02	103.5	113.6	66.19	72.90	50- 60	77.48	191.6	19,19
70	134.5	88.48	118.7	104.3	113.3	126.6	73.11	81.61	60- 70	96.89	288.5	28.6,28.6
80	144.3	93.27	120.8	107.0	119.1	135.3	77.67	87.37	70- 80	111.3	399.8	39.7,39.7
90	148.6	94.10	114.0	105.2	120.2	138.9	79.49	90.02	80- 90	118.2	517.9	51.4,51.4
100	146.9	90.54	91.91	99.14	116.8	136.8	78.77	89.31	90-100	116.3	634.3	62.9,62.9
110	139.5	83.63	94.86	89.59	108.7	129.1	74.79	85.37	100-110	107.3	741.6	73.6,73.6
120	126.8	73.80	84.48	77.17	96.25	116.5	67.98	78.46	110-120	92.29	833.9	82.8,82.8
130	109.8	61.40	69.50	62.78	80.36	99.42	58.49	68.72	120-130	72.59	906.5	90,90
140	89.77	47.07	52.40	46.93	61.67	79.18	46.72	55.95	130-140	51.21	957.7	95,95
150	67.16	31.82	34.09	30.22	41.51	56.28	33.71	39.08	140-150	30.99	988.7	98.1,98.1
160	42.63	17.57	16.19	13.96	22.22	30.92	20.64	20.95	150-160	14.54	1003	99.6,99.6
170	18.00	7.306	2.192	1.755	5.801	8.641	6.274	6.612	160-170	4.128	1007	100,100
180	0.0049	0	0.0829	0.1659	0.1495	0.1494	0.1479	0.1617	170-180	0.3001	1008	100,100
DEG	LUMINOUS INTENSITY:cd									UNIT:lm		

Conical surface Flux(90deg): 83.483 lm

%lum = 8.3%

%lamp = 8.3%

Conical surface Flux(120deg): 191.59 lm

%lum = 19.0%

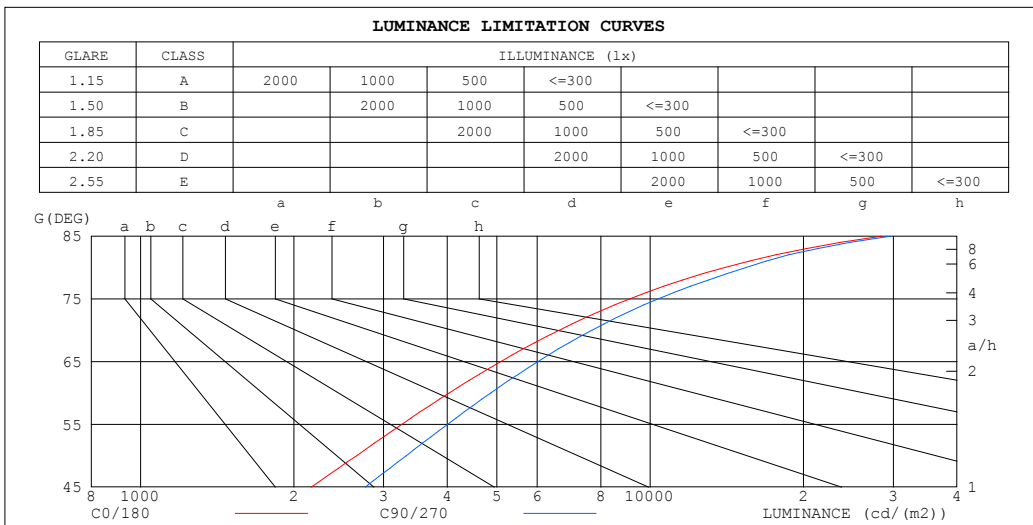
%lamp = 19.0%

C Range: 0 - 360DEG
C Interval: 22.5DEG
Test Speed: HIGH
Temperature:25.2℃
Operators:Dano
Test Date:2023-05-13

γ Range: 0 - 180DEG
 γ Interval: 1.0DEG
Test System:EVERFINE GO-R5000_V2 SYSTEM V2.00.459
Humidity:55.3%
Test Distance:2.900m [K=0.8810]
Remarks:

LUMINANCE LIMITATION CURVES

Test:U:120.0V I:0.2014A P:24.02W PF:0.9935 Freq:60.01Hz Lamp Flux:1007.66x1 lm		
NAME: PT27-4-3x8S-952C5-MVTD-BK 2700K	TYPE:	WEIGHT:
SPEC.:	DIM.:	SERIAL No.:
MFR.: FOSHAN LEDKEY LIGHTING CO.,LTD.	SUR.:	Shielding Angle:



LUMINANCE cd/(m2)		
G (DEG)	C0/180	C90/270
85	28469	29628
80	14006	15422
75	9122	10374
70	6628	7688
65	5092	6023
60	4034	4867
55	3258	4004
50	2653	3322
45	2163	2760

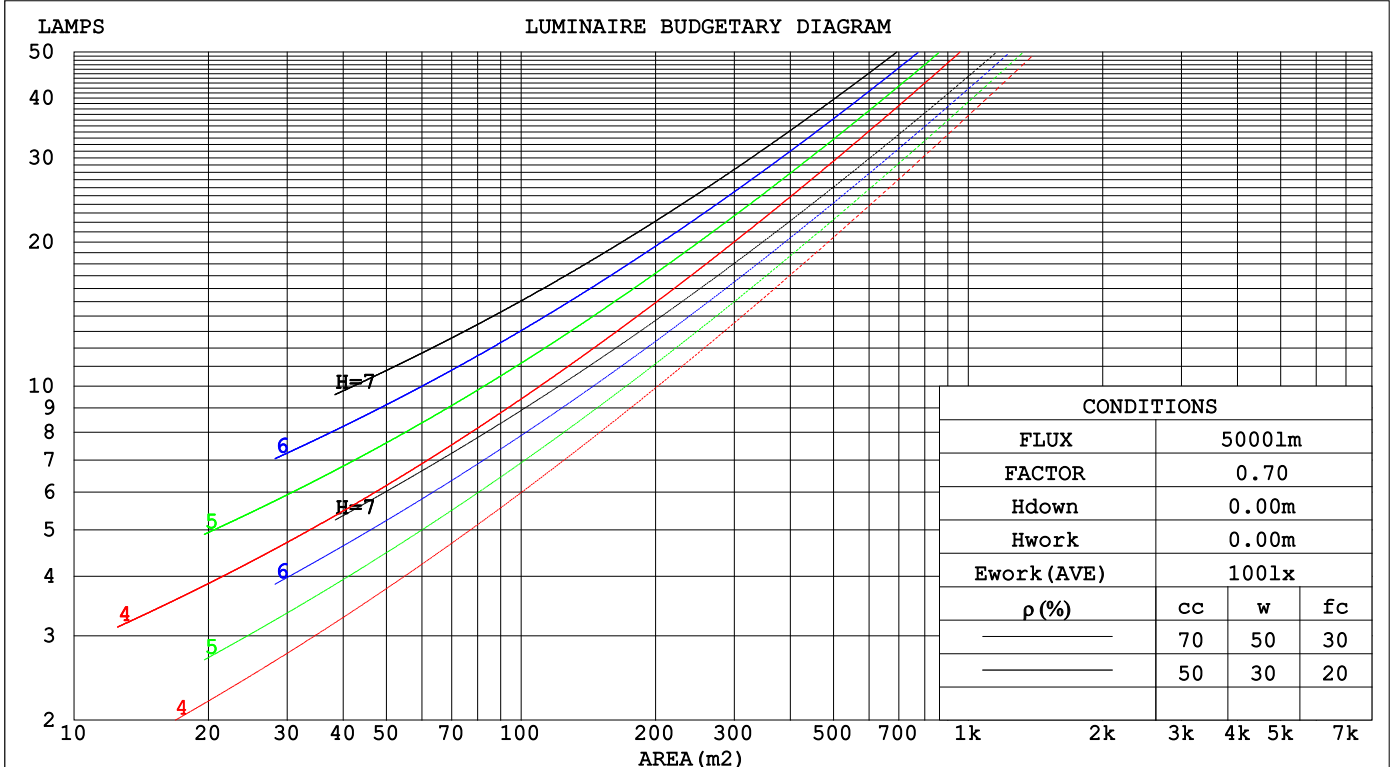
C Range: 0 - 360DEG
 C Interval: 22.5DEG
 Test Speed: HIGH
 Temperature:25.2℃
 Operators:Dano
 Test Date:2023-05-13

γ Range: 0 - 180DEG
 γ Interval: 1.0DEG
 Test System:EVERFINE GO-R5000_V2 SYSTEM V2.00.459
 Humidity:55.3%
 Test Distance:2.900m [K=0.8810]
 Remarks:

CU AND LUMINAIRE BUDGETARY ESTIMATE DIAGRAM

Test:U:120.0V I:0.2014A P:24.02W PF:0.9935 Freq:60.01Hz Lamp Flux:1007.66x1 lm		
NAME: PT27-4-3x8S-952C5-MVTD-BK 2700K	TYPE:	WEIGHT:
SPEC.:	DIM.:	SERIAL No.:
MFR.: FOSHAN LEDKEY LIGHTING CO.,LTD.	SUR.:	Shielding Angle:

pcc	80%			70%			50%			30%			10%			0
pw	50%	30%	10%	50%	30%	10%	50%	30%	10%	50%	30%	10%	50%	30%	10%	0
pfc	20%			20%			20%			20%			20%			0
RCR	RCR:Room Cavity Ratio						Coefficients of Utilization(CU)									
0.0	1.07	1.07	1.07	.99	.99	.99	.84	.84	.84	.70	.70	.70	.57	.57	.57	.51
1.0	.85	.79	.73	.78	.72	.67	.65	.60	.56	.52	.49	.46	.41	.39	.36	.31
2.0	.71	.62	.55	.65	.57	.51	.53	.47	.42	.43	.38	.34	.33	.29	.26	.21
3.0	.60	.51	.43	.55	.46	.40	.45	.38	.33	.36	.30	.26	.27	.23	.20	.15
4.0	.52	.42	.35	.48	.39	.32	.39	.32	.26	.31	.25	.21	.23	.19	.15	.11
5.0	.46	.36	.29	.42	.33	.26	.34	.27	.21	.27	.21	.17	.20	.16	.12	.09
6.0	.40	.31	.24	.37	.28	.22	.30	.23	.18	.24	.18	.14	.18	.13	.10	.07
7.0	.36	.27	.20	.33	.24	.19	.27	.20	.15	.21	.16	.12	.16	.12	.08	.06
8.0	.32	.23	.17	.30	.21	.16	.24	.18	.13	.19	.14	.10	.14	.10	.07	.05
9.0	.29	.21	.15	.27	.19	.14	.22	.16	.11	.17	.12	.09	.13	.09	.06	.04
10.0	.27	.19	.13	.24	.17	.12	.20	.14	.10	.16	.11	.08	.12	.08	.05	.03



C Range: 0 - 360DEG
 C Interval: 22.5DEG
 Test Speed: HIGH
 Temperature:25.2°C
 Operators:Dano
 Test Date:2023-05-13

γ Range: 0 - 180DEG
 γ Interval: 1.0DEG
 Test System:EVERFINE GO-R5000_V2 SYSTEM V2.00.459
 Humidity:55.3%
 Test Distance:2.900m [K=0.8810]
 Remarks:

WEC AND CCEC

Test:U:120.0V I:0.2014A P:24.02W PF:0.9935 Freq:60.01Hz Lamp Flux:1007.66x1 lm		
NAME: PT27-4-3x8S-952C5-MVTD-BK 2700K	TYPE:	WEIGHT:
SPEC.:	DIM.:	SERIAL No.:
MFR.: FOSHAN LEDKEY LIGHTING CO.,LTD.	SUR.:	Shielding Angle:

ρ _{cc}	80%			70%			50%			30%			10%			0
ρ _w	50%	30%	10%	50%	30%	10%	50%	30%	10%	50%	30%	10%	50%	30%	10%	0
ρ _{fc}	20%			20%			20%			20%			20%			0
RCR	RCR:Room Cavity Ratio						Wall Exitance Coefficients(WEC)									
0.0																
1.0	.446	.254	.080	.424	.242	.077	.383	.220	.070	.345	.199	.064	.310	.179	.058	
2.0	.366	.201	.062	.346	.191	.059	.308	.171	.053	.273	.153	.048	.241	.136	.043	
3.0	.316	.168	.050	.298	.159	.048	.263	.143	.043	.231	.127	.039	.201	.111	.034	
4.0	.279	.145	.043	.262	.137	.041	.231	.122	.037	.201	.108	.033	.173	.094	.029	
5.0	.250	.128	.037	.235	.121	.035	.206	.107	.032	.178	.094	.028	.153	.082	.025	
6.0	.227	.114	.033	.213	.108	.031	.186	.095	.028	.161	.084	.025	.137	.072	.021	
7.0	.208	.103	.029	.195	.097	.028	.170	.086	.025	.146	.075	.022	.124	.065	.019	
8.0	.192	.094	.026	.179	.088	.025	.156	.078	.022	.134	.068	.020	.114	.058	.017	
9.0	.178	.086	.024	.166	.081	.023	.145	.072	.020	.124	.062	.018	.105	.053	.015	
10.0	.165	.079	.022	.155	.075	.021	.135	.066	.019	.116	.057	.016	.098	.049	.014	

ρ _{cc}	80%			70%			50%			30%			10%			0
ρ _w	50%	30%	10%	50%	30%	10%	50%	30%	10%	50%	30%	10%	50%	30%	10%	0
ρ _{fc}	20%			20%			20%			20%			20%			0
RCR	RCR:Room Cavity Ratio						Ceiling Cavity Exitance Coefficients(CCEC)									
0.0																
1.0	.561	.561	.561	.479	.479	.479	.327	.327	.327	.188	.188	.188	.060	.060	.060	
2.0	.558	.507	.465	.478	.437	.402	.328	.302	.280	.189	.176	.164	.061	.057	.054	
3.0	.551	.492	.446	.473	.425	.386	.324	.295	.271	.187	.172	.160	.060	.056	.052	
4.0	.544	.481	.433	.467	.416	.376	.321	.290	.265	.186	.170	.157	.060	.055	.052	
5.0	.536	.472	.425	.461	.409	.370	.317	.285	.261	.184	.168	.155	.059	.055	.051	
6.0	.529	.465	.419	.455	.403	.365	.314	.282	.258	.182	.166	.154	.059	.054	.051	
7.0	.522	.459	.415	.449	.398	.362	.310	.279	.256	.180	.164	.153	.058	.054	.050	
8.0	.515	.454	.412	.443	.394	.359	.307	.276	.255	.178	.163	.152	.058	.053	.050	
9.0	.509	.449	.409	.438	.390	.357	.304	.274	.253	.177	.162	.151	.057	.053	.050	
10.0	.503	.445	.407	.434	.387	.355	.301	.272	.252	.175	.161	.151	.057	.053	.050	

C Range: 0 - 360DEG
 C Interval: 22.5DEG
 Test Speed: HIGH
 Temperature:25.2℃
 Operators:Dano
 Test Date:2023-05-13

γ Range: 0 - 180DEG
 γ Interval: 1.0DEG
 Test System:EVERFINE GO-R5000_V2 SYSTEM V2.00.459
 Humidity:55.3%
 Test Distance:2.900m [K=0.8810]
 Remarks:

UGR(Unified Glare Rating) Table

Test:U:120.0V I:0.2014A P:24.02W PF:0.9935 Freq:60.01Hz										
Lamp Flux:1007.66x1 lm										
NAME: PT27-4-3x8S-952C5-MVTD-BK 2700K					TYPE:			WEIGHT:		
SPEC.:					DIM.:			SERIAL No.:		
MFR.: FOSHAN LEDKEY LIGHTING CO.,LTD.					SUR.:			Shielding Angle:		
ceiling/cavity	0.7	0.7	0.5	0.5	0.3	0.7	0.7	0.5	0.5	0.3
walls	0.5	0.3	0.5	0.3	0.3	0.5	0.3	0.5	0.3	0.3
working plane	0.2	0.2	0.2	0.2	0.2	0.2	0.2	0.2	0.2	0.2
Room dimensions	Viewed crosswise					Viewed endwise				
x = 2H y = 2H	9.6	11.8	11.4	13.7	16.0	12.9	15.1	14.6	16.9	19.3
3H	13.8	15.8	15.6	17.7	20.1	16.5	18.5	18.3	20.4	22.8
4H	16.0	17.9	17.8	19.8	22.2	18.3	20.3	20.2	22.2	24.6
6H	18.4	20.2	20.2	22.1	24.6	20.3	22.1	22.2	24.1	26.6
8H	19.6	21.4	21.5	23.3	25.8	21.3	23.1	23.2	25.0	27.5
12H	21.1	22.8	23.0	24.7	27.3	22.5	24.2	24.4	26.1	28.6
4H 2H	10.3	12.2	12.1	14.1	16.5	13.1	15.0	14.9	16.9	19.4
3H	14.4	16.1	16.2	18.0	20.5	17.0	18.7	18.9	20.6	23.2
4H	16.6	18.2	18.5	20.1	22.7	19.1	20.7	21.0	22.6	25.2
6H	19.1	20.5	21.0	22.5	25.1	21.4	22.8	23.3	24.8	27.3
8H	20.5	21.8	22.4	23.8	26.4	22.5	23.8	24.4	25.8	28.4
12H	22.1	23.3	24.0	25.3	28.0	23.8	25.0	25.8	27.0	29.7
8H 4H	17.1	18.4	19.0	20.4	23.0	19.4	20.8	21.4	22.8	25.4
6H	19.7	20.9	21.7	22.9	25.5	22.0	23.2	24.0	25.2	27.8
8H	21.3	22.3	23.2	24.3	27.0	23.4	24.5	25.4	26.5	29.2
12H	23.1	24.0	25.1	26.0	28.7	25.0	25.9	27.0	28.0	30.7
12H 4H	17.2	18.4	19.2	20.4	23.1	19.5	20.7	21.4	22.7	25.4
6H	20.0	21.0	21.9	23.0	25.7	22.2	23.2	24.1	25.2	27.9
8H	21.6	22.5	23.6	24.5	27.3	23.7	24.6	25.7	26.7	29.4
CIE190: 2010										

CIE190: 2010
Area: 0.0494 m2

C Range: 0 - 360DEG
C Interval: 22.5DEG
Test Speed: HIGH
Temperature:25.2℃
Operators:Dano
Test Date:2023-05-13

γ Range: 0 - 180DEG
γ Interval: 1.0DEG
Test System:EVERFINE GO-R5000_V2 SYSTEM V2.00.459
Humidity:55.3%
Test Distance:2.900m [K=0.8810]
Remarks:

UTILIZATION FACTORS TABLE

Test:U:120.0V I:0.2014A P:24.02W PF:0.9935 Freq:60.01Hz Lamp Flux:1007.66x1 lm		
NAME: PT27-4-3x8S-952C5-MVTD-BK 2700K	TYPE:	WEIGHT:
SPEC.:	DIM.:	SERIAL No.:
MFR.: FOSHAN LEDKEY LIGHTING CO.,LTD.	SUR.:	Shielding Angle:

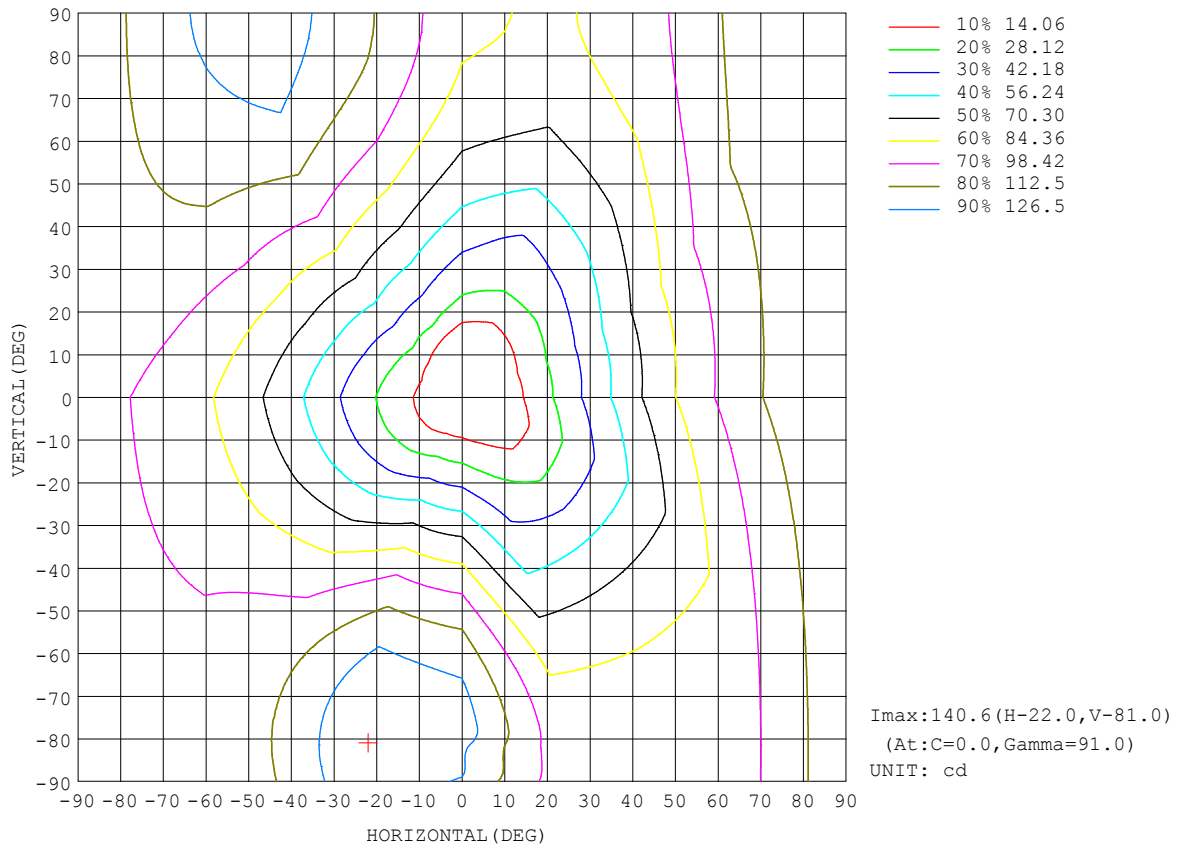
REFLECTANCE										
Ceiling	0.8	0.8	0.8	0.7	0.7	0.7	0.5	0.5	0.5	0
Walls	0.7	0.5	0.3	0.7	0.5	0.3	0.7	0.5	0.3	0
Working plane	0.2	0.2	0.2	0.2	0.2	0.2	0.2	0.2	0.2	0
ROOM INDEX	UTILIZATION FACTORS (PERCENT) $k(RI) \times RCR = 5$									
k = 0.60	33	20	13	32	19	12	28	18	11	4
0.80	42	27	18	39	26	18	34	23	16	6
1.00	49	34	24	46	32	23	40	30	21	9
1.25	56	41	31	52	38	29	45	33	26	12
1.50	61	46	36	57	43	34	48	38	30	14
2.00	69	55	45	64	52	42	54	44	37	19
2.50	75	62	52	69	57	48	58	49	42	22
3.00	79	67	57	73	62	53	61	53	46	25
4.00	84	74	65	78	69	61	66	58	52	29
5.00	88	79	71	81	73	66	68	62	57	31
ROOM INDEX	UF(total)									Direct
According to DIN EN 13032-2 2004			Suspended				SHRNOM = 1.25			

C Range: 0 - 360DEG
 C Interval: 22.5DEG
 Test Speed: HIGH
 Temperature:25.2°C
 Operators:Dano
 Test Date:2023-05-13

γ Range: 0 - 180DEG
 γ Interval: 1.0DEG
 Test System:EVERFINE GO-R5000_V2 SYSTEM V2.00.459
 Humidity:55.3%
 Test Distance:2.900m [K=0.8810]
 Remarks:

ISOCANDELA DIAGRAM

Test:U:120.0V I:0.2014A P:24.02W PF:0.9935 Freq:60.01Hz Lamp Flux:1007.66x1 lm		
NAME: PT27-4-3x8S-952C5-MVTD-BK 2700K	TYPE:	WEIGHT:
SPEC.:	DIM.:	SERIAL No.:
MFR.: FOSHAN LEDKEY LIGHTING CO.,LTD.	SUR.:	Shielding Angle:

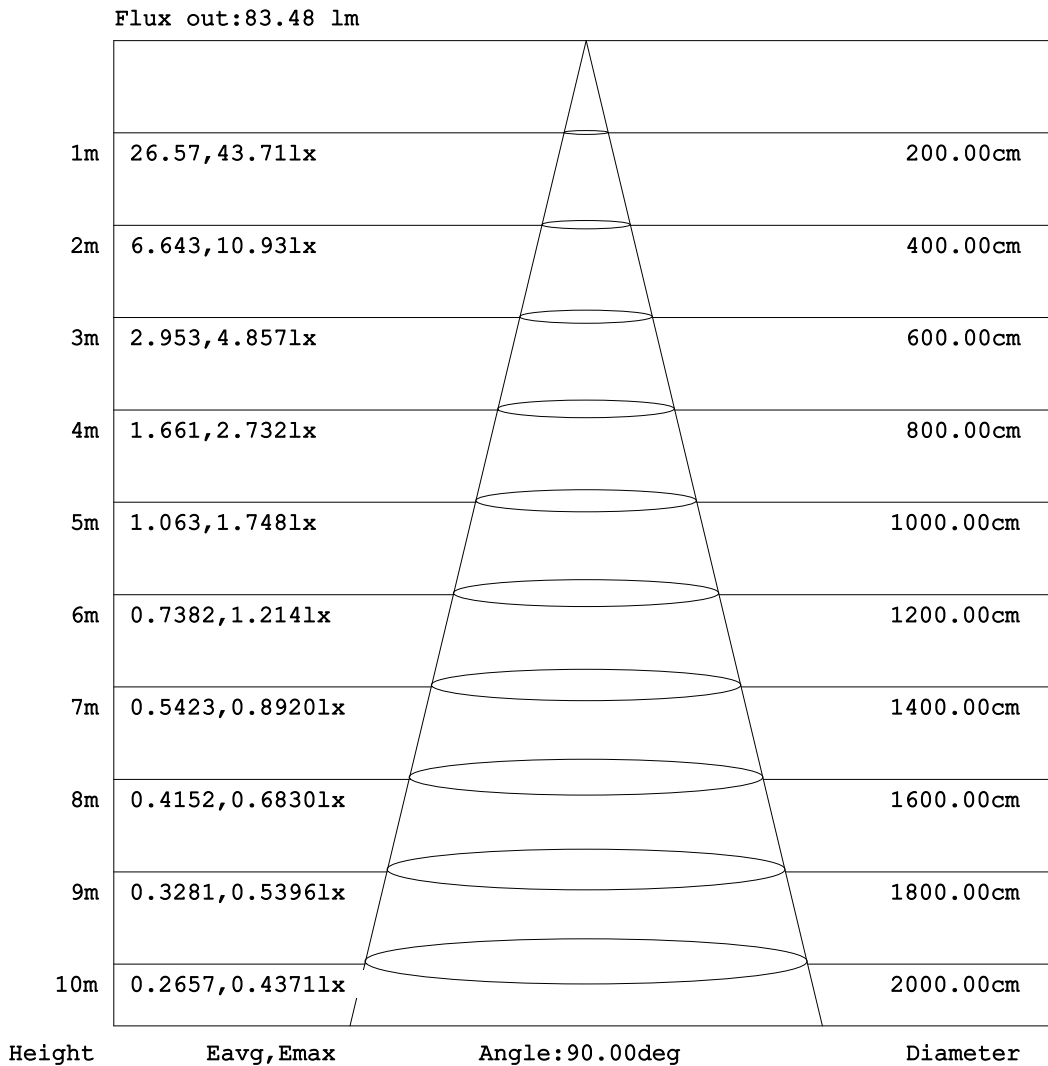


C Range: 0 - 360DEG
C Interval: 22.5DEG
Test Speed: HIGH
Temperature:25.2°C
Operators:Dano
Test Date:2023-05-13

γ Range: 0 - 180DEG
γ Interval: 1.0DEG
Test System:EVERFINE GO-R5000_V2 SYSTEM V2.00.459
Humidity:55.3%
Test Distance:2.900m [K=0.8810]
Remarks:

AAI Figure

Test:U:120.0V I:0.2014A P:24.02W PF:0.9935 Freq:60.01Hz Lamp Flux:1007.66x1 lm		
NAME: PT27-4-3x8S-952C5-MVTD-BK 2700K	TYPE:	WEIGHT:
SPEC.:	DIM.:	SERIAL No.:
MFR.: FOSHAN LEDKEY LIGHTING CO.,LTD.	SUR.:	Shielding Angle:



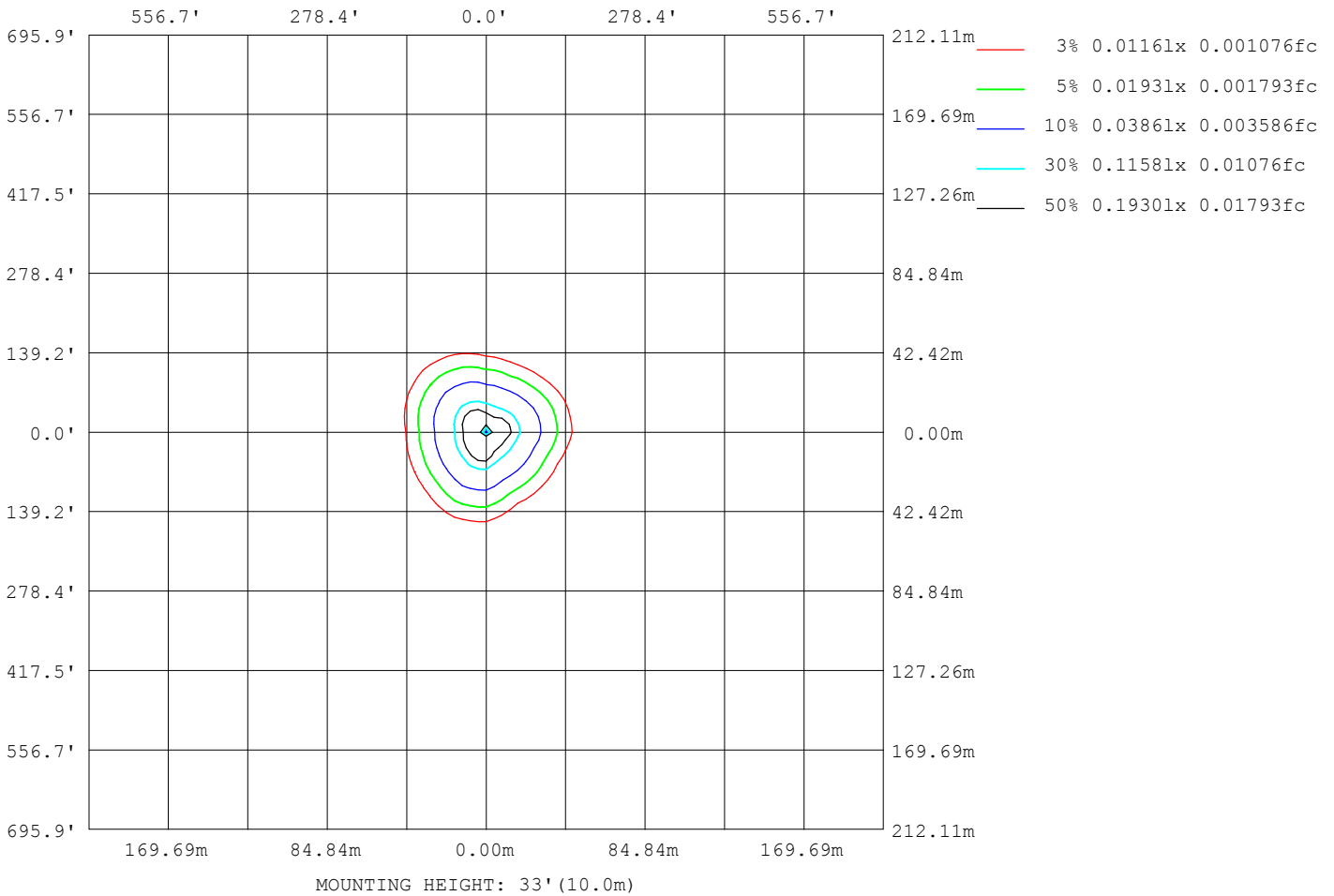
Note:The Curves indicate the illuminated area and the average illumination when the luminaire is at different distance.

C Range: 0 - 360DEG
 C Interval: 22.5DEG
 Test Speed: HIGH
 Temperature:25.2℃
 Operators:Dano
 Test Date:2023-05-13

γ Range: 0 - 180DEG
 γ Interval: 1.0DEG
 Test System:EVERFINE GO-R5000_V2 SYSTEM V2.00.459
 Humidity:55.3%
 Test Distance:2.900m [K=0.8810]
 Remarks:

ISOLUX DIAGRAM

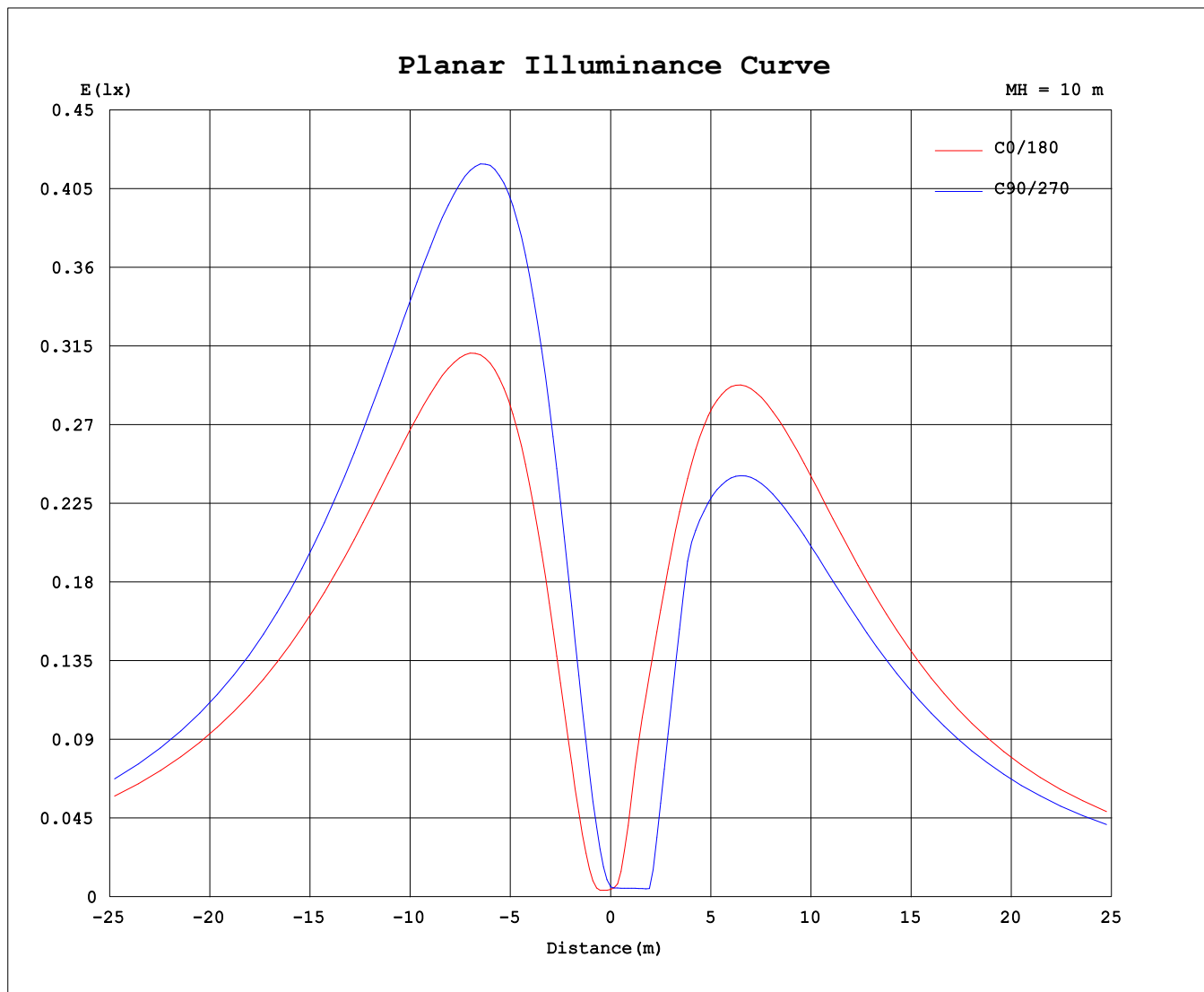
Test:U:120.0V I:0.2014A P:24.02W PF:0.9935 Freq:60.01Hz Lamp Flux:1007.66x1 lm		
NAME: PT27-4-3x8S-952C5-MVTD-BK 2700K	TYPE:	WEIGHT:
SPEC.:	DIM.:	SERIAL No.:
MFR.: FOSHAN LEDKEY LIGHTING CO.,LTD.	SUR.:	Shielding Angle:



C Range: 0 - 360DEG
C Interval: 22.5DEG
Test Speed: HIGH
Temperature:25.2°C
Operators:Dano
Test Date:2023-05-13

γ Range: 0 - 180DEG
γ Interval: 1.0DEG
Test System:EVERFINE GO-R5000_V2 SYSTEM V2.00.459
Humidity:55.3%
Test Distance:2.900m [K=0.8810]
Remarks:

Planar Illuminance Curve



C Range: 0 - 360DEG
C Interval: 22.5DEG
Test Speed: HIGH
Temperature: 25.2°C
Operators: Dano
Test Date: 2023-05-13

γ Range: 0 - 180DEG
γ Interval: 1.0DEG
Test System: EVERFINE GO-R5000_V2 SYSTEM V2.00.459
Humidity: 55.3%
Test Distance: 2.900m [K=0.8810]
Remarks:

LUMINOUS DISTRIBUTION INTENSITY DATA

Test:U:120.0V I:0.2014A P:24.02W PF:0.9935 Freq:60.01Hz Lamp Flux:1007.66x1 lm		
NAME: PT27-4-3x8S-952C5-MVTD-BK 2700K	TYPE:	WEIGHT:
SPEC.:	DIM.:	SERIAL No.:
MFR.: FOSHAN LEDKEY LIGHTING CO.,LTD.	SUR.:	Shielding Angle:

Table--1

UNIT: cd

C (DEG) γ (DEG)	0	22.5	45	67.5	90	112.5	135	157.5	180	202.5	225	247.5	270	292.5	315	337.5			
0	0.53	0.53	0.53	0.53	0.53	0.53	0.53	0.53	0.53	0.53	0.53	0.53	0.53	0.53	0.53	0.53			
5	1.13	0.96	2.30	3.98	5.06	5.20	4.94	4.92	4.98	2.84	0.51	0.44	0.46	0.48	0.71	1.07			
10	7.77	4.94	6.10	10.8	14.0	14.5	12.6	12.2	14.5	15.1	10.8	3.64	0.45	1.57	4.52	6.82			
15	18.4	12.1	11.9	18.9	24.8	25.9	22.1	20.6	23.4	25.6	26.1	17.0	7.42	6.44	11.2	15.7			
20	30.5	20.7	18.6	26.8	36.2	37.7	32.2	29.8	33.3	36.1	36.8	30.7	19.1	15.3	18.9	25.2			
25	43.2	30.0	26.2	33.7	47.5	49.7	42.4	39.2	43.5	46.8	47.5	39.4	27.1	23.6	27.1	34.7			
30	55.8	39.4	34.7	39.2	58.5	61.3	52.3	48.5	53.6	57.5	58.2	48.1	33.5	29.6	34.9	44.2			
35	68.0	48.6	43.6	44.1	69.0	72.4	61.7	57.4	63.5	67.9	68.5	56.5	39.9	33.4	41.6	54.0			
40	79.7	57.4	52.2	49.4	78.9	82.9	70.5	65.7	72.9	78.0	78.6	64.5	46.0	38.5	48.5	63.4			
45	90.8	65.6	60.3	55.5	88.1	92.5	78.5	73.3	81.7	87.6	88.1	72.1	51.8	44.8	55.3	72.4			
50	101	73.2	67.7	62.3	96.3	101	85.6	80.1	89.8	96.7	97.2	79.2	57.1	50.4	61.7	80.8			
55	111	80.2	74.2	68.6	104	109	91.9	86.1	97.1	105	106	85.7	61.9	55.7	67.6	88.7			
60	120	86.4	79.9	74.3	110	116	97.0	91.0	103	113	114	91.6	66.2	60.4	72.9	95.8			
65	128	91.8	84.7	79.0	115	121	101	95.0	109	120	121	96.8	70.0	64.5	77.6	102			
70	135	96.4	88.5	82.8	119	125	104	97.9	113	126	127	101	73.1	67.9	81.6	108			
75	140	100	91.4	85.6	121	128	106	99.8	117	131	132	105	75.7	70.8	84.9	112			
80	144	103	93.3	87.5	121	129	107	101	119	134	135	107	77.7	73.1	87.4	116			
85	147	105	94.2	88.4	117	129	107	101	120	137	138	109	79.1	74.6	89.1	118			
90	149	106	94.1	87.7	114	127	105	99.4	120	138	139	110	79.5	75.2	90.0	119			
95	148	105	92.8	85.1	103	124	103	97.4	119	138	139	109	79.6	74.9	90.0	119			
100	147	104	90.5	81.5	91.9	120	99.1	94.4	117	136	137	108	78.8	73.9	89.3	118			
105	144	103	87.5	77.2	96.3	114	94.8	90.5	113	133	134	105	77.1	72.6	87.8	115			
110	140	99.6	83.6	72.3	94.9	108	89.6	85.8	109	129	129	102	74.8	71.0	85.4	112			
115	134	95.8	79.1	66.9	90.5	100	83.7	80.2	103	123	123	97.3	71.7	68.6	82.3	107			
120	127	91.2	73.8	61.1	84.5	92.5	77.2	73.8	96.3	116	116	91.9	68.0	65.3	78.5	102			
125	119	85.9	67.9	54.9	77.5	84.0	70.2	66.7	88.7	108	108	85.7	63.5	61.2	73.9	95.2			
130	110	79.7	61.4	48.5	69.5	75.0	62.8	58.9	80.4	99.4	99.4	78.8	58.5	56.3	68.7	88.1			
135	100	72.9	54.4	41.8	61.1	65.8	55.0	50.7	71.2	89.3	89.6	71.3	52.9	50.9	62.8	80.2			
140	89.8	65.5	47.1	35.0	52.4	56.4	46.9	42.2	61.7	78.3	79.2	63.4	46.7	45.0	55.9	71.7			
145	78.7	57.5	39.5	28.2	43.3	46.7	38.6	33.6	51.6	65.9	68.1	55.5	40.2	38.6	48.0	62.3			
150	67.2	49.1	31.8	21.5	34.1	37.0	30.2	25.2	41.5	52.5	56.3	47.2	33.7	31.9	39.1	52.2			
155	55.1	40.2	24.3	15.4	25.0	27.2	21.9	17.0	31.7	38.5	43.7	38.3	27.4	24.9	29.8	41.6			
160	42.6	31.1	17.6	10.3	16.2	17.9	14.0	9.70	22.2	25.1	30.9	28.5	20.6	17.9	21.0	30.9			
165	30.1	22.0	11.9	5.95	8.23	9.40	6.97	3.77	13.4	14.1	18.8	18.1	13.4	11.2	13.5	21.1			
170	18.0	13.4	7.31	2.67	2.19	2.68	1.76	0.43	5.80	5.79	8.64	8.60	6.27	3.52	6.61	12.4			
175	7.56	5.85	3.58	1.53	0.35	0.16	0.16	0.18	0.59	0.58	1.24	1.25	0.30	0.17	0.22	1.80			
180	0.00	0.00	0.00	0.00	0.08	0.14	0.17	0.14	0.15	0.14	0.15	0.14	0.15	0.15	0.16	0.17			

C Range: 0 - 360DEG
 C Interval: 22.5DEG
 Test Speed: HIGH
 Temperature:25.2℃
 Operators:Dano
 Test Date:2023-05-13

γ Range: 0 - 180DEG
 γ Interval: 1.0DEG
 Test System:EVERFINE GO-R5000_V2 SYSTEM V2.00.459
 Humidity:55.3%
 Test Distance:2.900m [K=0.8810]
 Remarks: