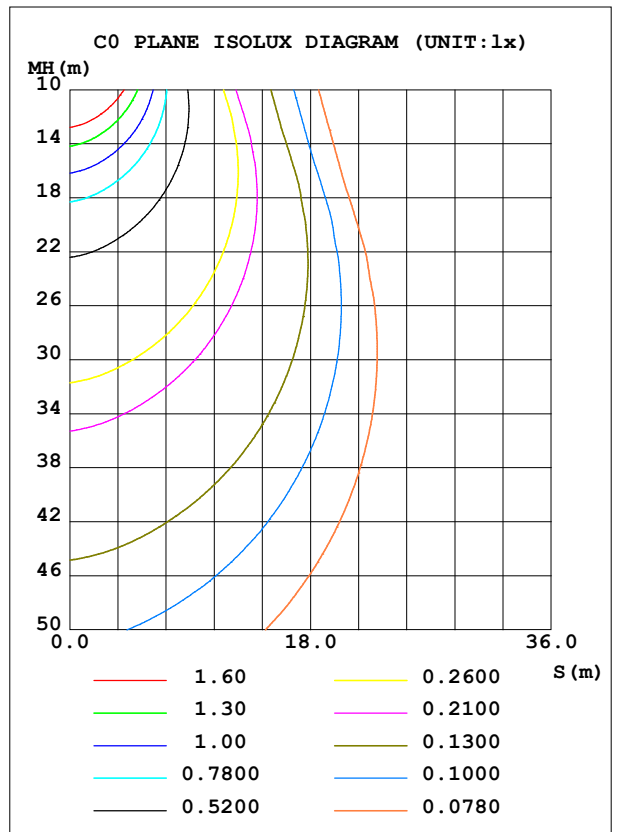
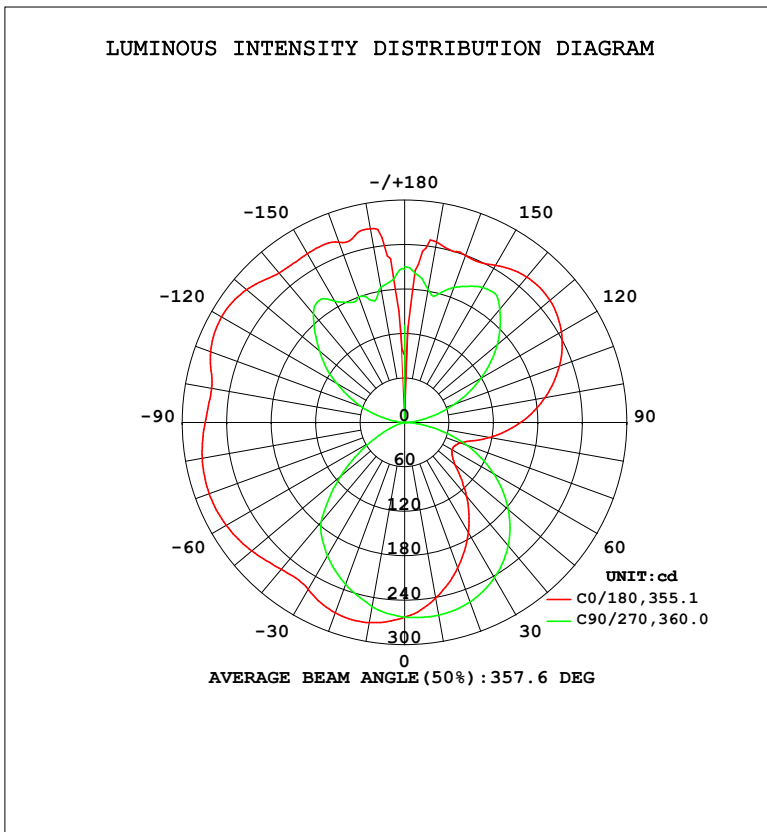


LUMINAIRE PHOTOMETRIC TEST REPORT

Test:U:119.9V I:0.3111A P:36.85W PF:0.9878 Freq:60.01Hz Lamp Flux:2185.76x1 lm		
NAME: PT07-44-40S-952C5-MVTD-BN 5000K	TYPE:	WEIGHT:
SPEC.:	DIM.:	SERIAL No.:
MFR.: FOSHAN LEDKEY LIGHTING CO.,LTD.	SUR.:	Shielding Angle:

DATA OF LAMP		PHOTOMETRIC DATA				Eff: 59.31 lm/W
MODEL		I <sub>max</sub> (cd)	285.3	S/MH (C0/180)		1.50
NOMINAL POWER (W)		LOR (%)	100.0	S/MH (C90/270)		1.19
RATED VOLTAGE (V)	120	TOTAL FLUX (lm)	2185.8	η UP, DN (C0-180)		27.3, 23.0
NOMINAL FLUX (lm)	2185.76	CIE CLASS	DIFFUSE	η UP, DN (C180-360)		27.0, 22.7
LAMPS INSIDE	1	η up (%)	54.3	CIBSE SHR NOM		1.25
TEST VOLTAGE (V)	120	η down (%)	45.7	CIBSE SHR MAX		1.35



C Range: 0 - 360DEG  
 C Interval: 22.5DEG  
 Test Speed: HIGH  
 Temperature: 25.2°C  
 Operators: Dano  
 Test Date: 2023-06-12

γ Range: 0 - 180DEG  
 γ Interval: 1.0DEG  
 Test System: EVERFINE GO-R5000\_V2 SYSTEM V2.00.459  
 Humidity: 55.3%  
 Test Distance: 2.900m [K=0.8810]  
 Remarks:

ZONAL FLUX DIAGRAM

ZONAL FLUX DIAGRAM:

γ	C0	C45	C90	C135	C180	C225	C270	C315	γ	Φ zone	Φ total	%lum,lamp
10	240.8	251.3	264.0	273.3	274.2	264.9	252.6	241.4	0- 10	24.84	24.84	1.14,1.14
20	209.3	229.6	257.7	274.5	273.6	257.7	232.7	212.6	10- 20	71.00	95.84	4.38,4.38
30	172.1	199.4	242.2	264.5	260.4	240.0	208.2	178.6	20- 30	107.4	203.2	9.3,9.3
40	130.1	162.1	217.3	243.7	259.2	214.6	175.4	140.5	30- 40	129.7	333.0	15.2,15.2
50	88.86	118.6	182.7	234.0	269.4	198.3	112.6	99.51	40- 50	138.3	471.3	21.6,21.6
60	74.25	73.27	138.9	230.5	278.0	191.8	54.27	60.72	50- 60	136.0	607.3	27.8,27.8
70	80.69	52.85	88.43	224.7	280.9	185.9	15.24	50.86	60- 70	129.8	737.1	33.7,33.7
80	116.9	65.75	35.03	213.4	277.4	177.5	0.4147	71.49	70- 80	126.9	864.0	39.5,39.5
90	156.6	104.3	0.8289	199.6	269.3	168.8	0.4453	110.4	80- 90	134.7	998.7	45.7,45.7
100	192.1	140.0	25.28	200.2	264.5	173.8	19.70	146.3	90-100	149.6	1148	52.5,52.5
110	222.1	170.5	70.34	219.5	278.5	192.2	61.24	176.9	100-110	171.1	1319	60.4,60.4
120	244.6	194.1	118.4	227.9	285.3	202.3	106.3	200.3	110-120	184.6	1504	68.8,68.8
130	256.2	209.1	163.0	227.8	278.8	207.3	150.3	214.7	120-130	183.5	1688	77.2,77.2
140	256.4	211.3	199.9	238.7	263.6	224.9	191.8	208.4	130-140	168.4	1856	84.9,84.9
150	245.1	214.1	210.4	249.0	263.0	243.1	189.1	212.8	140-150	142.8	1999	91.4,91.4
160	240.2	209.7	193.9	257.5	259.0	249.0	180.8	191.1	150-160	105.7	2104	96.3,96.3
170	247.5	181.2	182.6	230.5	265.5	250.6	185.6	180.4	160-170	61.89	2166	99.1,99.1
180	0	196.7	210.6	188.4	97.23	171.3	207.1	205.5	170-180	19.39	2186	100,100
DEG	LUMINOUS INTENSITY:cd									UNIT:lm		

Conical surface Flux(90deg): 401.86 lm

%lum = 18.4%

%lamp = 18.4%

Conical surface Flux(120deg): 607.33 lm

%lum = 27.8%

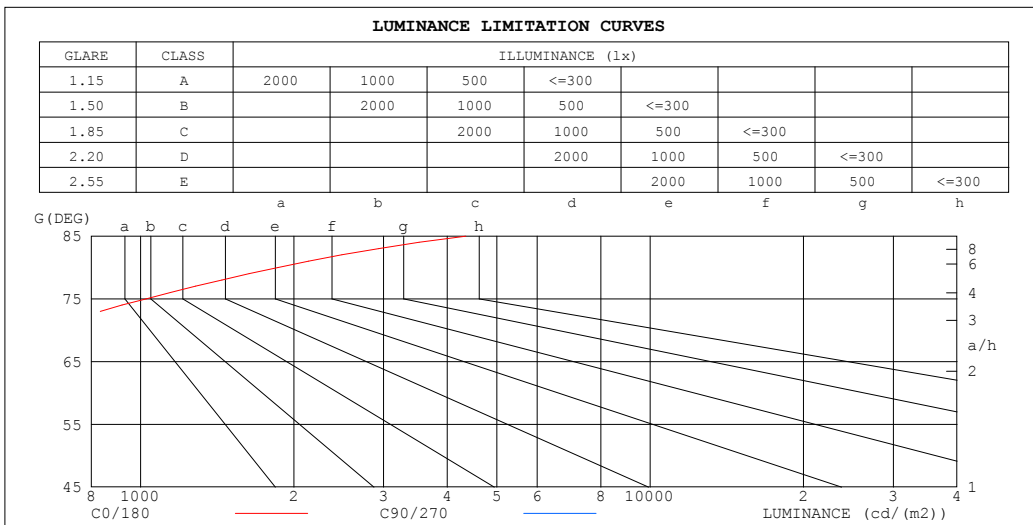
%lamp = 27.8%

C Range: 0 - 360DEG  
 C Interval: 22.5DEG  
 Test Speed: HIGH  
 Temperature:25.2℃  
 Operators:Dano  
 Test Date:2023-06-12

γ Range: 0 - 180DEG  
 γ Interval: 1.0DEG  
 Test System:EVERFINE GO-R5000\_V2 SYSTEM V2.00.459  
 Humidity:55.3%  
 Test Distance:2.900m [K=0.8810]  
 Remarks:

LUMINANCE LIMITATION CURVES

Test:U:119.9V I:0.3111A P:36.85W PF:0.9878 Freq:60.01Hz Lamp Flux:2185.76x1 lm		
NAME: PT07-44-40S-952C5-MVTD-BN 5000K	TYPE:	WEIGHT:
SPEC.:	DIM.:	SERIAL No.:
MFR.: FOSHAN LEDKEY LIGHTING CO.,LTD.	SUR.:	Shielding Angle:



LUMINANCE cd/(m2)		
G (DEG)	C0/180	C90/270
85	4349	402
80	1861	562
75	1025	659
70	652	720
65	489	752
60	410	773
55	379	785
50	382	791
45	425	792

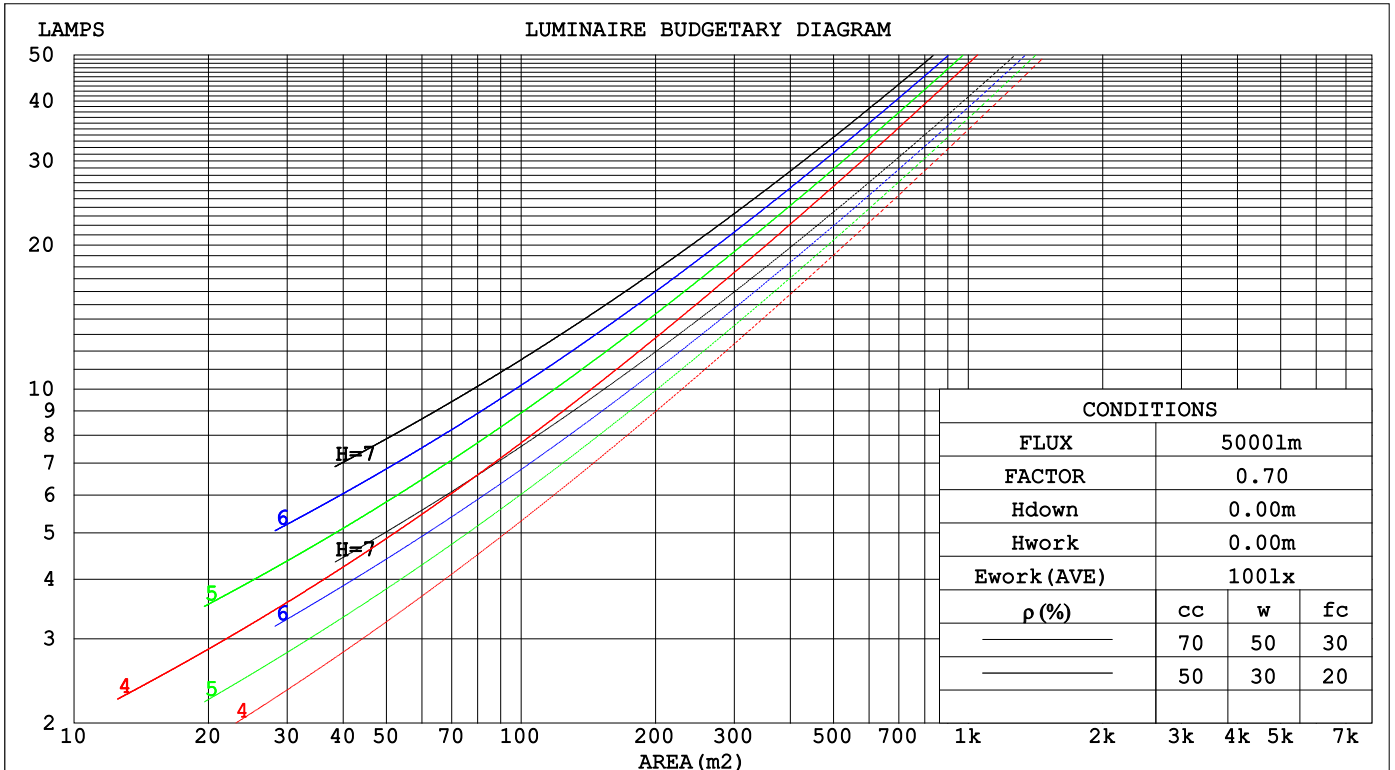
C Range: 0 - 360DEG  
 C Interval: 22.5DEG  
 Test Speed: HIGH  
 Temperature:25.2℃  
 Operators:Dano  
 Test Date:2023-06-12

γ Range: 0 - 180DEG  
 γ Interval: 1.0DEG  
 Test System:EVERFINE GO-R5000\_V2 SYSTEM V2.00.459  
 Humidity:55.3%  
 Test Distance:2.900m [K=0.8810]  
 Remarks:

**CU AND LUMINAIRE BUDGETARY ESTIMATE DIAGRAM**

Test:U:119.9V I:0.3111A P:36.85W PF:0.9878 Freq:60.01Hz Lamp Flux:2185.76x1 lm		
NAME: PT07-44-40S-952C5-MVTD-BN 5000K	TYPE:	WEIGHT:
SPEC.:	DIM.:	SERIAL No.:
MFR.: FOSHAN LEDKEY LIGHTING CO.,LTD.	SUR.:	Shielding Angle:

ρcc	80%			70%			50%			30%			10%			0
ρw	50%	30%	10%	50%	30%	10%	50%	30%	10%	50%	30%	10%	50%	30%	10%	0
ρfc	20%			20%			20%			20%			20%			0
RCR	RCR:Room Cavity Ratio						Coefficients of Utilization(CU)									
0.0	1.06	1.06	1.06	.97	.97	.97	.81	.81	.81	.66	.66	.66	.52	.52	.52	.46
1.0	.89	.84	.79	.81	.77	.73	.67	.64	.61	.54	.52	.50	.42	.40	.39	.33
2.0	.76	.69	.63	.70	.64	.58	.57	.53	.49	.46	.43	.40	.36	.33	.31	.26
3.0	.66	.58	.52	.61	.54	.48	.50	.45	.40	.40	.36	.33	.31	.28	.26	.21
4.0	.58	.50	.43	.54	.46	.40	.44	.38	.34	.36	.31	.28	.27	.24	.22	.18
5.0	.52	.43	.37	.48	.40	.34	.39	.33	.29	.32	.27	.24	.25	.21	.19	.15
6.0	.46	.38	.32	.43	.35	.29	.35	.29	.25	.29	.24	.21	.22	.19	.16	.13
7.0	.42	.33	.28	.38	.31	.26	.32	.26	.22	.26	.21	.18	.20	.17	.14	.12
8.0	.38	.30	.24	.35	.28	.23	.29	.23	.19	.24	.19	.16	.19	.15	.13	.10
9.0	.34	.27	.21	.32	.25	.20	.27	.21	.17	.22	.17	.14	.17	.14	.11	.09
10.0	.31	.24	.19	.29	.22	.18	.24	.19	.15	.20	.16	.13	.16	.13	.10	.08



C Range: 0 - 360DEG  
 C Interval: 22.5DEG  
 Test Speed: HIGH  
 Temperature:25.2°C  
 Operators:Dano  
 Test Date:2023-06-12

γ Range: 0 - 180DEG  
 γ Interval: 1.0DEG  
 Test System:EVERFINE GO-R5000\_V2 SYSTEM V2.00.459  
 Humidity:55.3%  
 Test Distance:2.900m [K=0.8810]  
 Remarks:

WEC AND CCEC

Test:U:119.9V I:0.3111A P:36.85W PF:0.9878 Freq:60.01Hz Lamp Flux:2185.76x1 lm		
NAME: PT07-44-40S-952C5-MVTD-BN 5000K	TYPE:	WEIGHT:
SPEC.:	DIM.:	SERIAL No.:
MFR.: FOSHAN LEDKEY LIGHTING CO.,LTD.	SUR.:	Shielding Angle:

ρcc	80%			70%			50%			30%			10%			0
ρw	50%	30%	10%	50%	30%	10%	50%	30%	10%	50%	30%	10%	50%	30%	10%	0
ρfc	20%			20%			20%			20%			20%			0
RCR	RCR:Room Cavity Ratio						Wall Exitance Coefficients(WEC)									
0.0																
1.0	.350	.199	.063	.327	.186	.059	.282	.162	.052	.242	.139	.045	.204	.118	.038	
2.0	.301	.165	.051	.280	.154	.048	.240	.133	.041	.202	.114	.036	.168	.095	.030	
3.0	.268	.143	.043	.249	.133	.040	.212	.115	.035	.178	.097	.030	.146	.081	.025	
4.0	.242	.126	.037	.224	.117	.035	.190	.101	.030	.159	.085	.026	.130	.070	.021	
5.0	.221	.113	.033	.205	.105	.031	.173	.090	.027	.144	.076	.023	.117	.063	.019	
6.0	.203	.102	.029	.188	.095	.027	.159	.082	.024	.132	.069	.020	.107	.056	.017	
7.0	.188	.093	.026	.174	.087	.025	.147	.074	.021	.122	.063	.018	.099	.051	.015	
8.0	.175	.085	.024	.162	.080	.023	.137	.068	.020	.114	.058	.017	.092	.047	.014	
9.0	.163	.079	.022	.151	.074	.021	.128	.063	.018	.106	.053	.015	.085	.043	.013	
10.0	.153	.073	.020	.142	.068	.019	.120	.059	.017	.100	.049	.014	.080	.040	.012	

ρcc	80%			70%			50%			30%			10%			0
ρw	50%	30%	10%	50%	30%	10%	50%	30%	10%	50%	30%	10%	50%	30%	10%	0
ρfc	20%			20%			20%			20%			20%			0
RCR	RCR:Room Cavity Ratio						Ceiling Cavity Exitance Coefficients(CCEC)									
0.0	.604	.604	.604	.516	.516	.516	.352	.352	.352	.202	.202	.202	.065	.065	.065	
1.0	.600	.573	.548	.514	.492	.472	.351	.338	.326	.202	.196	.190	.065	.063	.061	
2.0	.594	.552	.517	.508	.475	.447	.348	.329	.312	.201	.191	.183	.064	.062	.060	
3.0	.586	.537	.497	.503	.463	.431	.345	.322	.302	.199	.188	.178	.064	.061	.058	
4.0	.579	.525	.483	.497	.454	.420	.342	.316	.296	.198	.185	.175	.064	.060	.058	
5.0	.572	.516	.474	.491	.446	.412	.339	.312	.291	.196	.183	.173	.063	.060	.057	
6.0	.566	.508	.467	.486	.440	.407	.335	.308	.288	.195	.181	.171	.063	.059	.057	
7.0	.559	.502	.463	.481	.435	.403	.332	.305	.286	.193	.180	.170	.062	.059	.056	
8.0	.553	.497	.459	.476	.431	.400	.330	.303	.284	.192	.179	.169	.062	.059	.056	
9.0	.548	.493	.456	.472	.428	.398	.327	.301	.282	.190	.178	.168	.062	.058	.056	
10.0	.542	.489	.454	.468	.425	.396	.324	.299	.281	.189	.177	.168	.061	.058	.056	

C Range: 0 - 360DEG  
 C Interval: 22.5DEG  
 Test Speed: HIGH  
 Temperature:25.2℃  
 Operators:Dano  
 Test Date:2023-06-12

γ Range: 0 - 180DEG  
 γ Interval: 1.0DEG  
 Test System:EVERFINE GO-R5000\_V2 SYSTEM V2.00.459  
 Humidity:55.3%  
 Test Distance:2.900m [K=0.8810]  
 Remarks:

UGR(Unified Glare Rating) Table

Test:U:119.9V I:0.3111A P:36.85W PF:0.9878 Freq:60.01Hz Lamp Flux:2185.76x1 lm		
NAME: PT07-44-40S-952C5-MVTD-BN 5000K	TYPE:	WEIGHT:
SPEC.:	DIM.:	SERIAL No.:
MFR.: FOSHAN LEDKEY LIGHTING CO.,LTD.	SUR.:	Shielding Angle:

ceiling/cavity	0.7	0.7	0.5	0.5	0.3	0.7	0.7	0.5	0.5	0.3
walls	0.5	0.3	0.5	0.3	0.3	0.5	0.3	0.5	0.3	0.3
working plane	0.2	0.2	0.2	0.2	0.2	0.2	0.2	0.2	0.2	0.2
Room dimensions	Viewed crosswise					Viewed endwise				
x = 2H y = 2H	-0.3	1.6	1.6	3.5	6.0	5.4	7.3	7.3	9.2	11.7
3H	2.9	4.6	4.8	6.5	9.1	7.1	8.8	9.0	10.7	13.3
4H	5.2	6.8	7.1	8.8	11.4	7.7	9.3	9.7	11.3	13.9
6H	8.2	9.7	10.2	11.7	14.3	8.1	9.6	10.1	11.6	14.2
8H	9.9	11.3	11.8	13.3	15.9	8.2	9.6	10.2	11.6	14.3
12H	11.7	13.1	13.7	15.1	17.8	8.2	9.5	10.2	11.6	14.2
4H 2H	-0.2	1.4	1.7	3.4	6.0	6.7	8.3	8.7	10.3	12.9
3H	3.2	4.6	5.2	6.6	9.3	8.8	10.1	10.7	12.2	14.8
4H	5.8	7.1	7.8	9.1	11.8	9.6	10.9	11.6	12.9	15.6
6H	9.1	10.2	11.1	12.3	15.0	10.3	11.4	12.3	13.4	16.1
8H	10.9	12.0	13.0	14.0	16.8	10.4	11.5	12.5	13.6	16.3
12H	12.9	13.9	15.0	16.0	18.7	10.5	11.5	12.6	13.6	16.3
8H 4H	5.9	7.0	8.0	9.0	11.8	11.2	12.2	13.2	14.3	17.1
6H	9.6	10.5	11.7	12.6	15.4	12.4	13.2	14.4	15.4	18.1
8H	11.7	12.5	13.8	14.6	17.4	12.9	13.6	15.0	15.8	18.6
12H	14.0	14.7	16.2	16.9	19.7	13.2	13.9	15.3	16.0	18.9
12H 4H	5.9	6.8	7.9	8.9	11.7	11.7	12.7	13.8	14.8	17.5
6H	9.7	10.5	11.8	12.6	15.4	13.2	14.0	15.3	16.1	18.9
8H	11.9	12.6	14.0	14.7	17.6	14.0	14.7	16.1	16.8	19.6
CIE190: 2010										

CIE190: 2010  
Area: 0.36 m2

C Range: 0 - 360DEG  
C Interval: 22.5DEG  
Test Speed: HIGH  
Temperature:25.2℃  
Operators:Dano  
Test Date:2023-06-12

γ Range: 0 - 180DEG  
γ Interval: 1.0DEG  
Test System:EVERFINE GO-R5000\_V2 SYSTEM V2.00.459  
Humidity:55.3%  
Test Distance:2.900m [K=0.8810]  
Remarks:

**UTILIZATION FACTORS TABLE**

Test:U:119.9V I:0.3111A P:36.85W PF:0.9878 Freq:60.01Hz Lamp Flux:2185.76x1 lm		
NAME: PT07-44-40S-952C5-MVTD-BN 5000K	TYPE:	WEIGHT:
SPEC.:	DIM.:	SERIAL No.:
MFR.: FOSHAN LEDKEY LIGHTING CO.,LTD.	SUR.:	Shielding Angle:

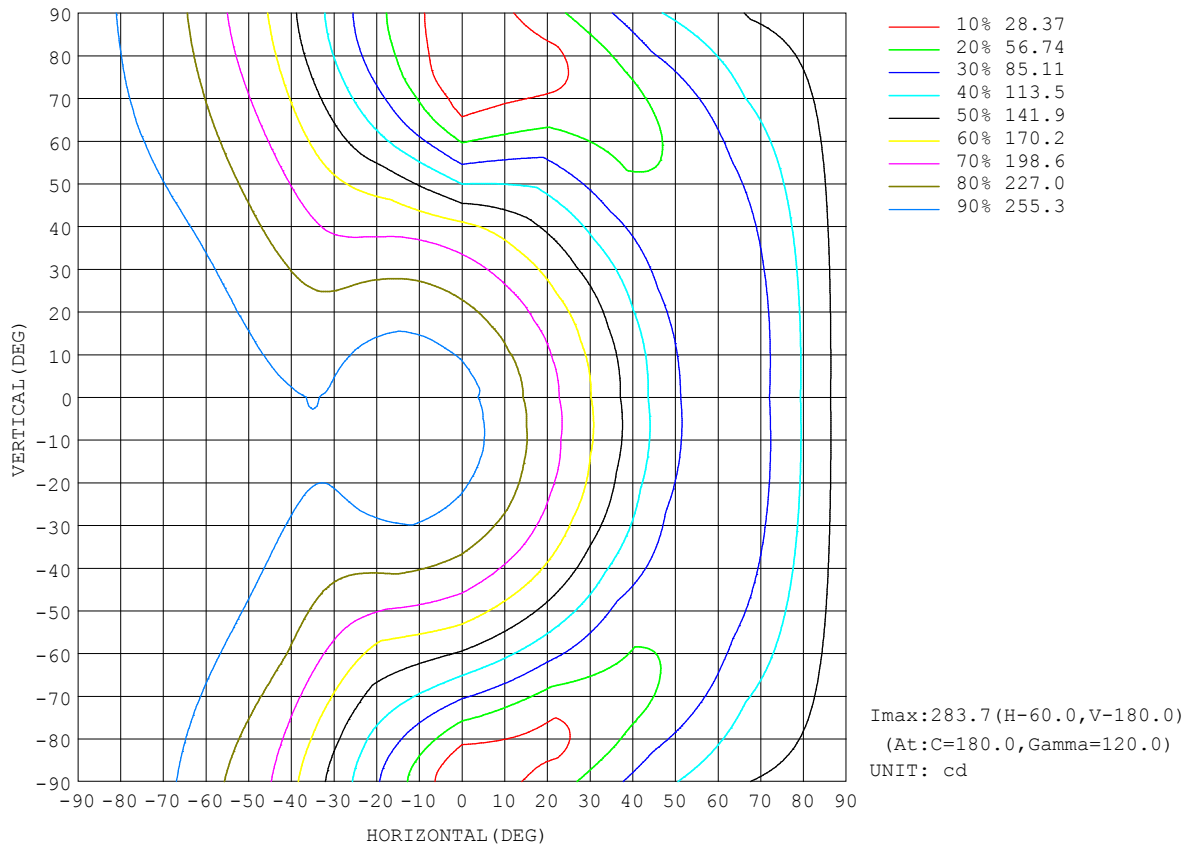
REFLECTANCE										
Ceiling	0.8	0.8	0.8	0.7	0.7	0.7	0.5	0.5	0.5	0
Walls	0.7	0.5	0.3	0.7	0.5	0.3	0.7	0.5	0.3	0
Working plane	0.2	0.2	0.2	0.2	0.2	0.2	0.2	0.2	0.2	0
ROOM INDEX	UTILIZATION FACTORS (PERCENT) $k(RI) \times RCR = 5$									
k = 0.60	39	27	21	37	26	20	33	24	18	11
0.80	48	35	28	45	33	26	39	30	24	14
1.00	55	42	34	51	40	32	44	37	29	17
1.25	62	49	41	57	46	38	49	40	34	20
1.50	67	55	46	62	51	43	53	44	38	22
2.00	74	63	55	69	59	51	58	50	44	25
2.50	79	69	60	73	64	56	61	54	49	28
3.00	83	73	66	76	68	61	64	58	52	30
4.00	88	79	73	80	73	67	67	62	57	32
5.00	91	84	77	83	77	72	69	65	61	34
ROOM INDEX	UF(total)									Direct
According to DIN EN 13032-2 2004			Suspended				SHRNOM = 1.25			

C Range: 0 - 360DEG  
 C Interval: 22.5DEG  
 Test Speed: HIGH  
 Temperature:25.2°C  
 Operators:Dano  
 Test Date:2023-06-12

$\gamma$  Range: 0 - 180DEG  
 $\gamma$  Interval: 1.0DEG  
 Test System:EVERFINE GO-R5000\_V2 SYSTEM V2.00.459  
 Humidity:55.3%  
 Test Distance:2.900m [K=0.8810]  
 Remarks:

ISOCANDELA DIAGRAM

Test:U:119.9V I:0.3111A P:36.85W PF:0.9878 Freq:60.01Hz Lamp Flux:2185.76x1 lm		
NAME: PT07-44-40S-952C5-MVTD-BN 5000K	TYPE:	WEIGHT:
SPEC.:	DIM.:	SERIAL No.:
MFR.: FOSHAN LEDKEY LIGHTING CO.,LTD.	SUR.:	Shielding Angle:



C Range: 0 - 360DEG  
C Interval: 22.5DEG  
Test Speed: HIGH  
Temperature:25.2°C  
Operators:Dano  
Test Date:2023-06-12

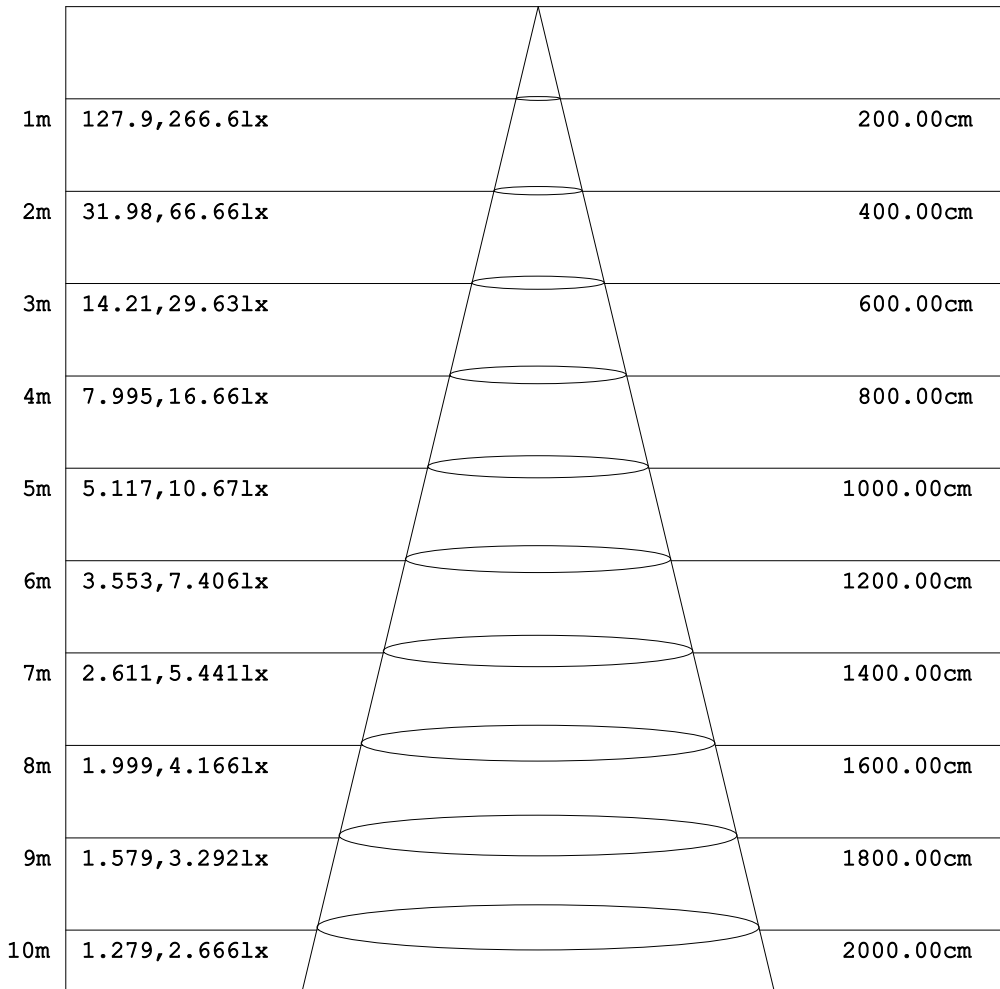
γ Range: 0 - 180DEG  
γ Interval: 1.0DEG  
Test System:EVERFINE GO-R5000\_V2 SYSTEM V2.00.459  
Humidity:55.3%  
Test Distance:2.900m [K=0.8810]  
Remarks:



**AAI Figure**

Test:U:119.9V I:0.3111A P:36.85W PF:0.9878 Freq:60.01Hz Lamp Flux:2185.76x1 lm		
NAME: PT07-44-40S-952C5-MVTD-BN 5000K	TYPE:	WEIGHT:
SPEC.:	DIM.:	SERIAL No.:
MFR.: FOSHAN LEDKEY LIGHTING CO.,LTD.	SUR.:	Shielding Angle:

Flux out:401.9 lm



Height                      Eavg, Emax                      Angle:90.00deg                      Diameter

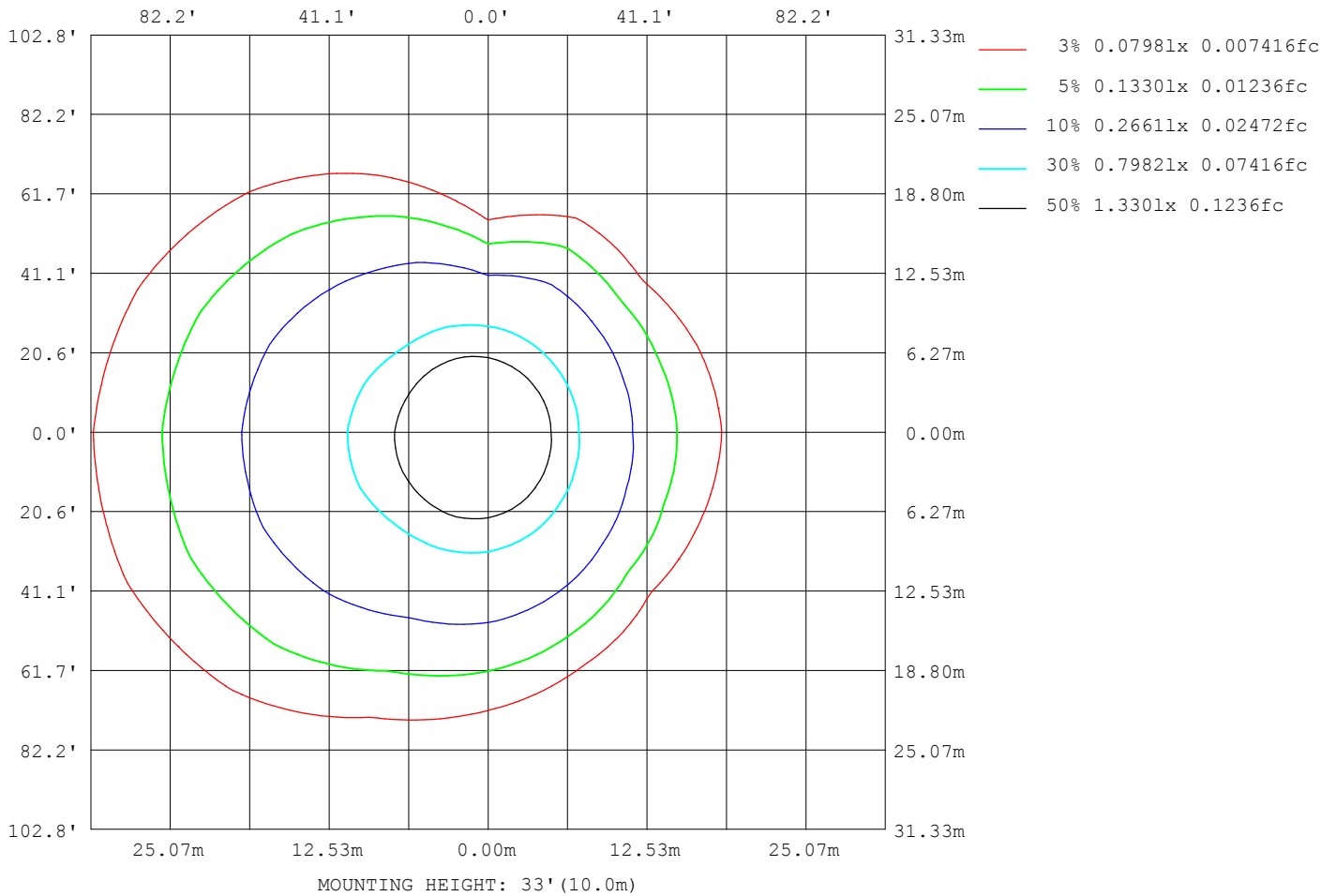
Note:The Curves indicate the illuminated area and the average illumination when the luminaire is at different distance.

C Range: 0 - 360DEG  
C Interval: 22.5DEG  
Test Speed: HIGH  
Temperature:25.2°C  
Operators:Dano  
Test Date:2023-06-12

γ Range: 0 - 180DEG  
γ Interval: 1.0DEG  
Test System:EVERFINE GO-R5000\_V2 SYSTEM V2.00.459  
Humidity:55.3%  
Test Distance:2.900m [K=0.8810]  
Remarks:

ISOLUX DIAGRAM

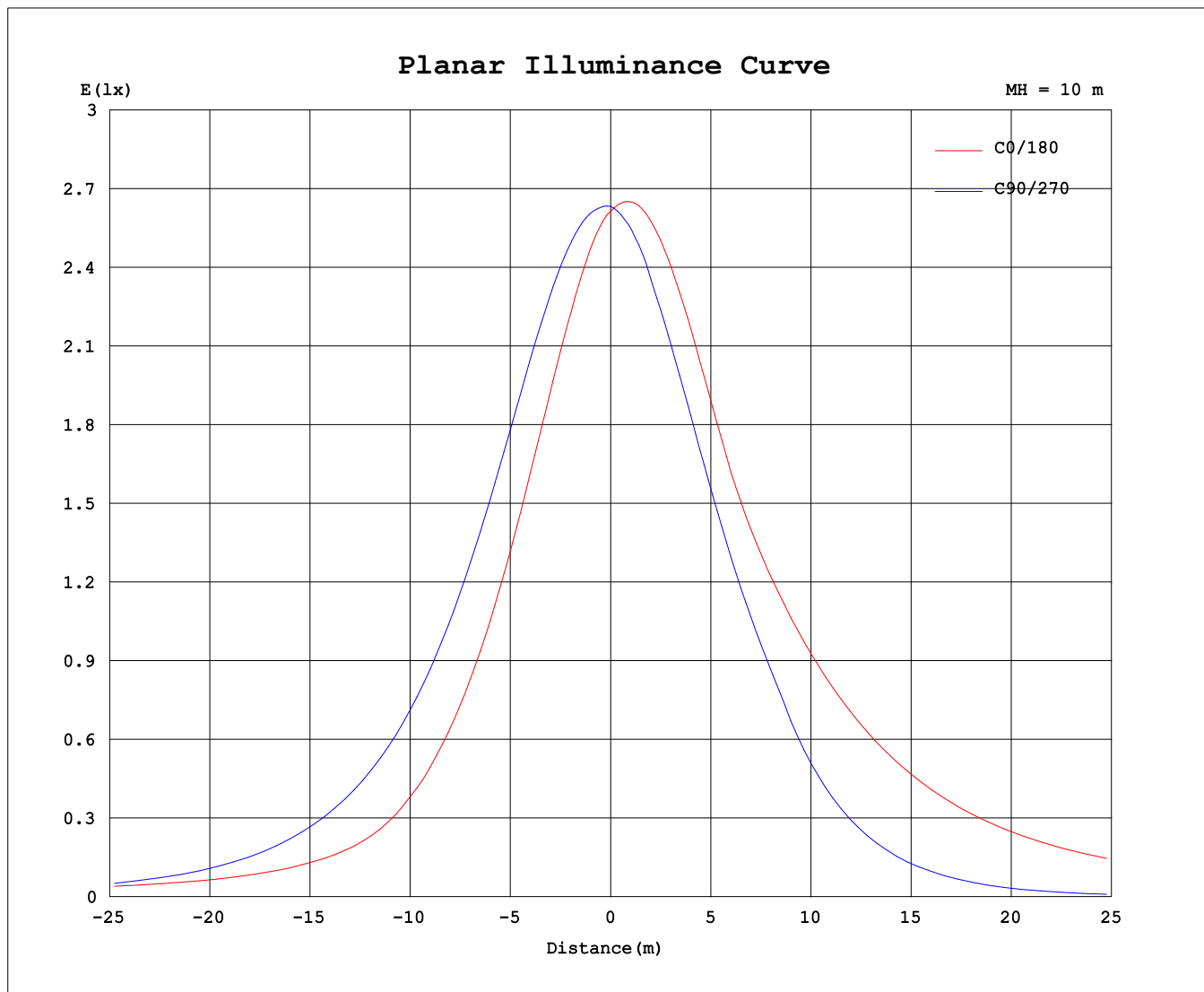
Test:U:119.9V I:0.3111A P:36.85W PF:0.9878 Freq:60.01Hz Lamp Flux:2185.76x1 lm		
NAME: PT07-44-40S-952C5-MVTD-BN 5000K	TYPE:	WEIGHT:
SPEC.:	DIM.:	SERIAL No.:
MFR.: FOSHAN LEDKEY LIGHTING CO.,LTD.	SUR.:	Shielding Angle:



C Range: 0 - 360DEG  
 C Interval: 22.5DEG  
 Test Speed: HIGH  
 Temperature:25.2°C  
 Operators:Dano  
 Test Date:2023-06-12

γ Range: 0 - 180DEG  
 γ Interval: 1.0DEG  
 Test System:EVERFINE GO-R5000\_V2 SYSTEM V2.00.459  
 Humidity:55.3%  
 Test Distance:2.900m [K=0.8810]  
 Remarks:

Planar Illuminance Curve



C Range: 0 - 360DEG  
 C Interval: 22.5DEG  
 Test Speed: HIGH  
 Temperature: 25.2°C  
 Operators: Dano  
 Test Date: 2023-06-12

γ Range: 0 - 180DEG  
 γ Interval: 1.0DEG  
 Test System: EVERFINE GO-R5000\_V2 SYSTEM V2.00.459  
 Humidity: 55.3%  
 Test Distance: 2.900m [K=0.8810]  
 Remarks:

LUMINOUS DISTRIBUTION INTENSITY DATA

Test:U:119.9V I:0.3111A P:36.85W PF:0.9878 Freq:60.01Hz Lamp Flux:2185.76x1 lm		
NAME: PT07-44-40S-952C5-MVTD-BN 5000K	TYPE:	WEIGHT:
SPEC.:	DIM.:	SERIAL No.:
MFR.: FOSHAN LEDKEY LIGHTING CO.,LTD.	SUR.:	Shielding Angle:

Table--1

UNIT: cd

C (DEG) γ (DEG)	0	22.5	45	67.5	90	112.5	135	157.5	180	202.5	225	247.5	270	292.5	315	337.5			
0	263	263	263	263	263	263	263	263	263	263	263	263	263	263	263	263			
5	254	256	258	262	264	267	269	269	270	268	265	262	259	256	254	254			
10	241	245	251	258	264	270	273	274	274	270	265	258	253	246	241	240			
15	226	232	241	252	262	271	275	276	275	270	263	253	243	234	228	225			
20	209	217	230	245	258	269	275	275	274	266	258	245	233	221	213	208			
25	191	200	216	235	251	265	271	271	268	260	250	236	221	207	196	191			
30	172	182	199	222	242	258	265	264	260	251	240	225	208	192	179	172			
35	152	162	182	208	231	249	255	257	256	242	228	212	194	175	160	152			
40	130	141	162	191	217	237	244	258	259	239	215	197	175	157	141	131			
45	109	119	141	172	201	222	237	261	264	241	204	182	144	138	120	110			
50	88.9	96.8	119	151	183	205	234	265	269	244	198	165	113	119	99.5	88.5			
55	78.6	80.7	95.9	128	162	186	232	269	274	247	195	146	81.9	98.4	78.3	74.6			
60	74.2	72.3	73.3	104	139	167	231	271	278	249	192	127	54.3	77.5	60.7	68.6			
65	74.8	69.3	59.7	78.7	114	152	228	273	280	250	189	112	30.6	56.6	52.6	67.8			
70	80.7	71.8	52.9	53.1	88.4	139	225	273	281	250	186	99.9	15.2	36.4	50.9	72.3			
75	96.0	82.5	53.2	31.4	61.2	126	220	270	280	248	182	89.4	2.50	24.7	55.8	84.3			
80	117	103	65.7	22.0	35.0	115	213	267	277	245	177	80.8	0.41	23.5	71.5	105			
85	137	123	85.2	28.6	12.6	105	206	262	274	241	173	74.5	0.49	35.2	91.2	124			
90	157	142	104	45.0	0.83	98.9	200	256	269	237	169	71.9	0.45	52.1	110	144			
95	175	161	123	62.2	7.61	101	196	252	266	234	168	77.4	3.91	69.2	129	162			
100	192	178	140	79.3	25.3	115	200	252	264	235	174	89.2	19.7	85.9	146	179			
105	208	194	156	95.6	46.5	126	211	260	270	242	184	99.7	39.2	103	162	195			
110	222	208	171	111	70.3	136	219	268	279	250	192	109	61.2	119	177	209			
115	235	220	183	125	95.1	145	225	272	284	256	198	120	82.7	132	190	221			
120	245	230	194	135	118	159	228	274	285	258	202	135	106	142	200	231			
125	252	238	203	146	142	174	228	272	284	258	204	151	129	154	209	239			
130	256	243	209	158	163	189	228	267	279	254	207	167	150	163	215	244			
135	258	245	209	173	182	202	232	260	271	249	215	180	171	175	215	246			
140	256	245	211	187	200	211	239	257	264	249	225	192	192	187	208	245			
145	252	242	207	199	212	225	245	258	262	252	235	210	201	197	211	241			
150	245	236	214	210	210	238	249	260	263	257	243	228	189	199	213	221			
155	239	233	222	201	203	246	247	260	264	260	247	242	179	187	211	223			
160	240	232	210	189	194	239	257	254	259	257	249	250	181	172	191	223			
165	241	232	191	175	180	203	260	263	261	260	258	246	170	164	179	192			
170	248	189	181	185	183	187	230	257	266	265	251	228	186	179	180	175			
175	214	156	195	197	200	195	200	204	222	222	213	200	193	197	195	191			
180	0.00	173	197	208	211	206	188	159	97.2	97.8	171	194	207	210	206	190			

C Range: 0 - 360DEG  
 C Interval: 22.5DEG  
 Test Speed: HIGH  
 Temperature:25.2℃  
 Operators:Dano  
 Test Date:2023-06-12

γ Range: 0 - 180DEG  
 γ Interval: 1.0DEG  
 Test System:EVERFINE GO-R5000\_V2 SYSTEM V2.00.459  
 Humidity:55.3%  
 Test Distance:2.900m [K=0.8810]  
 Remarks: