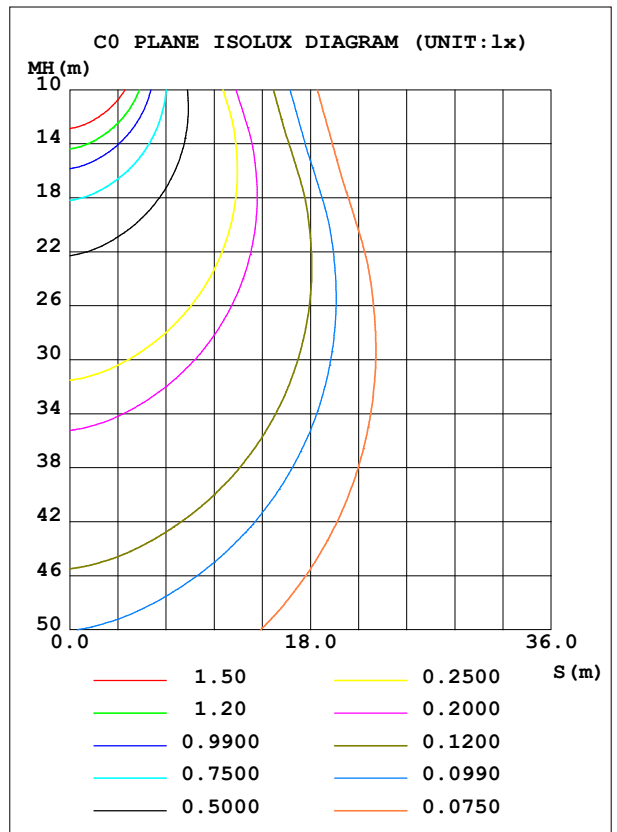
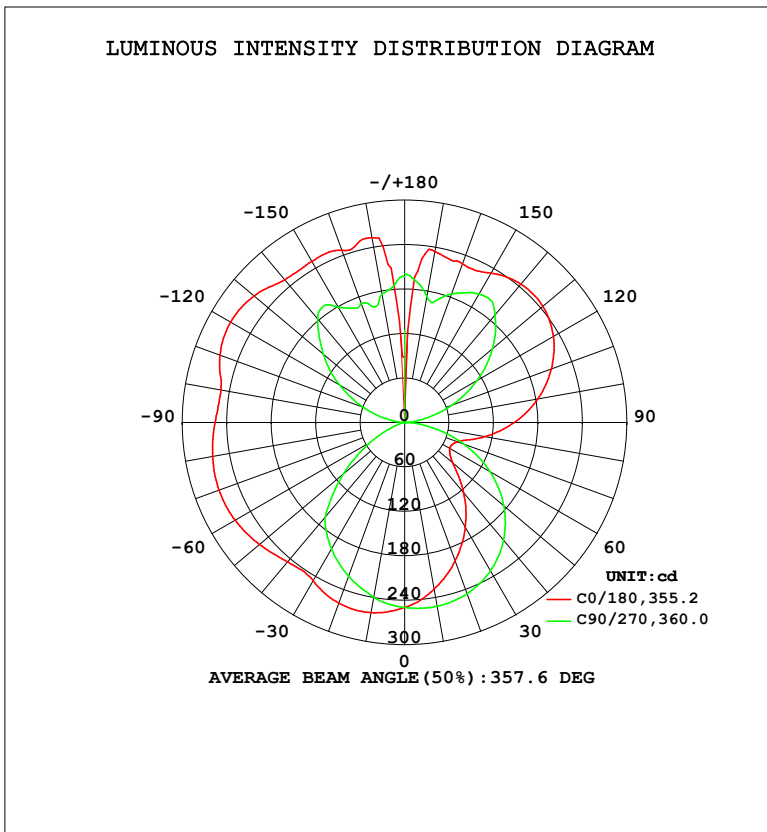


LUMINAIRE PHOTOMETRIC TEST REPORT

Test:U:119.9V I:0.3167A P:37.53W PF:0.9882 Freq:60.01Hz Lamp Flux:2078.22x1 lm		
NAME: PT07-44-40S-952C5-MVTD-BN 4000K	TYPE:	WEIGHT:
SPEC.:	DIM.:	SERIAL No.:
MFR.: FOSHAN LEDKEY LIGHTING CO.,LTD.	SUR.:	Shielding Angle:

DATA OF LAMP		PHOTOMETRIC DATA				Eff: 55.37 lm/W
MODEL		I _{max} (cd)	271.2	S/MH (C0/180)	1.50	
NOMINAL POWER (W)		LOR (%)	100.0	S/MH (C90/270)	1.19	
RATED VOLTAGE (V)	120	TOTAL FLUX (lm)	2078.2	η UP, DN (C0-180)	27.2, 23.0	
NOMINAL FLUX (lm)	2078.22	CIE CLASS	DIFFUSE	η UP, DN (C180-360)	27.1, 22.7	
LAMPS INSIDE	1	η up (%)	54.3	CIBSE SHR NOM	1.25	
TEST VOLTAGE (V)	120	η down (%)	45.7	CIBSE SHR MAX	1.35	



C Range: 0 - 360DEG
 C Interval: 22.5DEG
 Test Speed: HIGH
 Temperature: 25.2 °C
 Operators: Dano
 Test Date: 2023-06-12

γ Range: 0 - 180DEG
 γ Interval: 1.0DEG
 Test System: EVERFINE GO-R5000_V2 SYSTEM V2.00.459
 Humidity: 55.3%
 Test Distance: 2.900m [K=0.8810]
 Remarks:

ZONAL FLUX DIAGRAM

ZONAL FLUX DIAGRAM:

γ	C0	C45	C90	C135	C180	C225	C270	C315	γ	Φ zone	Φ total	%lum, lamp
10	228.8	239.0	252.0	260.9	260.6	251.3	240.0	228.9	0- 10	23.62	23.62	1.14,1.14
20	199.1	218.5	246.2	261.2	259.7	243.5	221.0	201.7	10- 20	67.48	91.10	4.38,4.38
30	163.8	190.1	231.5	251.5	246.9	226.7	197.5	169.4	20- 30	102.1	193.2	9.29,9.29
40	124.0	154.7	207.7	231.5	245.8	202.3	166.8	133.2	30- 40	123.3	316.4	15.2,15.2
50	84.68	113.5	174.8	222.3	256.1	187.3	107.4	94.12	40- 50	131.5	447.9	21.6,21.6
60	70.57	69.81	133.4	219.1	264.1	181.2	52.47	57.38	50- 60	129.3	577.3	27.8,27.8
70	76.37	50.07	84.56	213.5	266.7	175.8	14.96	48.33	60- 70	123.4	700.7	33.7,33.7
80	110.4	61.78	33.72	202.7	263.2	167.9	0.3987	68.35	70- 80	120.6	821.3	39.5,39.5
90	148.2	98.21	0.7939	189.8	255.9	159.9	0.4298	105.5	80- 90	128.0	949.3	45.7,45.7
100	182.2	132.2	23.67	190.4	251.6	164.9	19.11	139.5	90-100	142.2	1092	52.5,52.5
110	210.6	161.3	66.62	208.8	265.2	182.5	58.67	168.4	100-110	162.7	1254	60.4,60.4
120	231.9	183.7	112.4	216.9	271.1	192.0	101.6	190.7	110-120	175.5	1430	68.8,68.8
130	243.6	198.0	154.9	216.7	265.3	196.8	143.3	204.5	120-130	174.6	1604	77.2,77.2
140	243.9	200.3	189.9	227.1	251.8	213.4	182.7	199.2	130-140	160.1	1765	84.9,84.9
150	232.9	202.8	200.3	236.7	251.1	230.6	179.9	202.8	140-150	135.9	1900	91.4,91.4
160	227.9	198.8	184.5	244.6	247.3	236.7	171.2	181.4	150-160	100.5	2001	96.3,96.3
170	234.5	171.5	173.5	219.9	253.0	237.1	176.3	172.0	160-170	58.86	2060	99.1,99.1
180	0	186.3	201.1	179.1	89.51	162.8	196.8	195.6	170-180	18.43	2078	100,100
DEG	LUMINOUS INTENSITY:cd									UNIT:lm		

Conical surface Flux(90deg): 381.94 lm

%lum = 18.4%

%lamp = 18.4%

Conical surface Flux(120deg): 577.27 lm

%lum = 27.8%

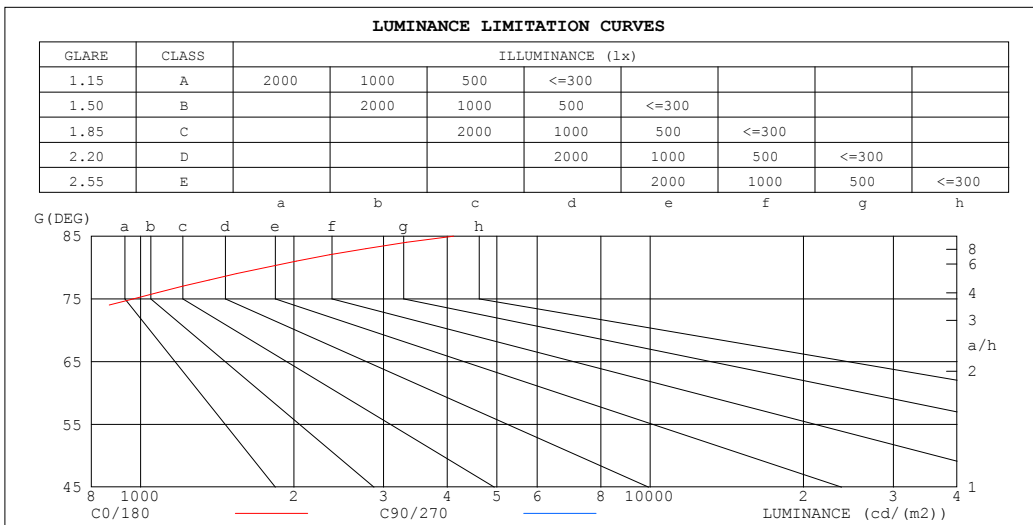
%lamp = 27.8%

C Range: 0 - 360DEG
 C Interval: 22.5DEG
 Test Speed: HIGH
 Temperature:25.2℃
 Operators:Dano
 Test Date:2023-06-12

γ Range: 0 - 180DEG
 γ Interval: 1.0DEG
 Test System:EVERFINE GO-R5000_V2 SYSTEM V2.00.459
 Humidity:55.3%
 Test Distance:2.900m [K=0.8810]
 Remarks:

LUMINANCE LIMITATION CURVES

Test:U:119.9V I:0.3167A P:37.53W PF:0.9882 Freq:60.01Hz Lamp Flux:2078.22x1 lm		
NAME: PT07-44-40S-952C5-MVTD-BN 4000K	TYPE:	WEIGHT:
SPEC.:	DIM.:	SERIAL No.:
MFR.: FOSHAN LEDKEY LIGHTING CO.,LTD.	SUR.:	Shielding Angle:



LUMINANCE cd/(m2)		
G (DEG)	C0/180	C90/270
85	4114	393
80	1757	540
75	967	630
70	617	687
65	464	721
60	390	742
55	361	752
50	364	756
45	406	756

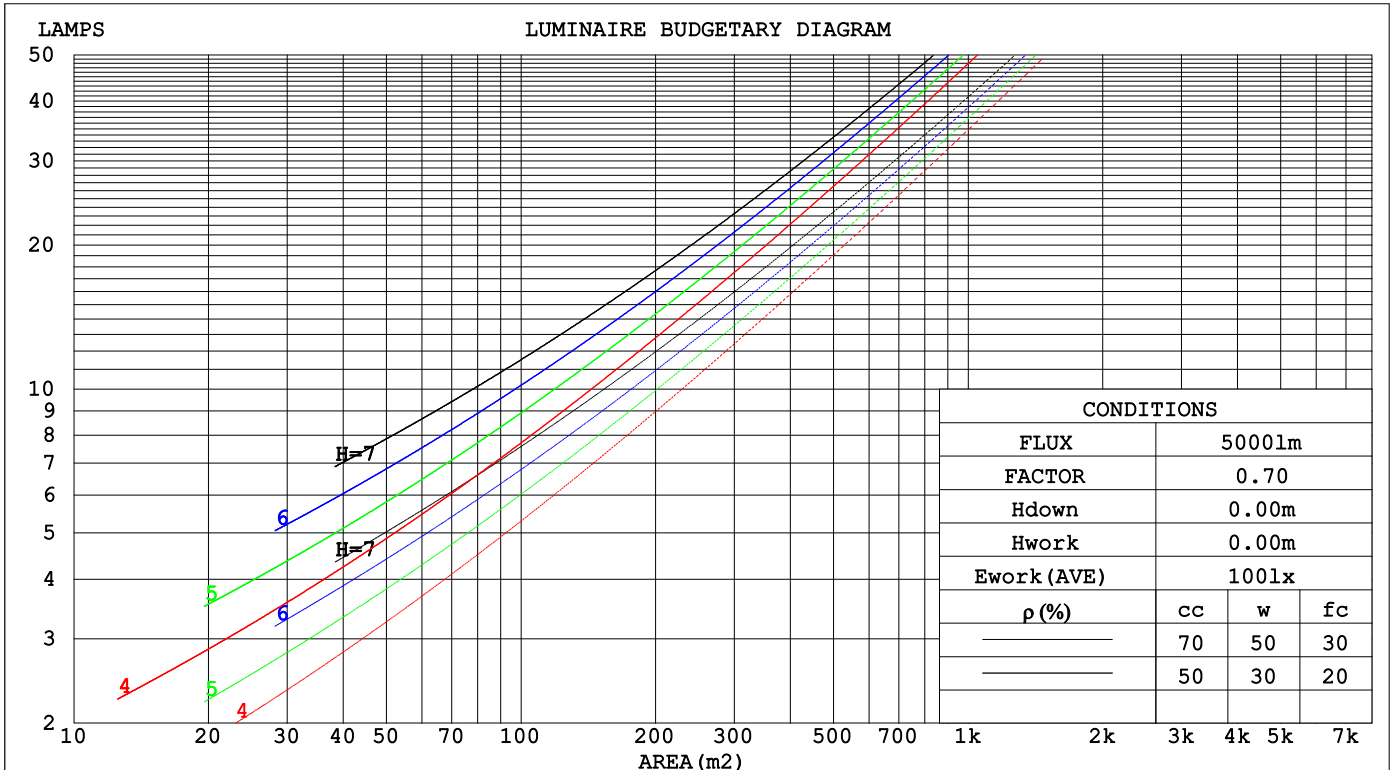
C Range: 0 - 360DEG
 C Interval: 22.5DEG
 Test Speed: HIGH
 Temperature: 25.2°C
 Operators: Dano
 Test Date: 2023-06-12

γ Range: 0 - 180DEG
 γ Interval: 1.0DEG
 Test System: EVERFINE GO-R5000_V2 SYSTEM V2.00.459
 Humidity: 55.3%
 Test Distance: 2.900m [K=0.8810]
 Remarks:

CU AND LUMINAIRE BUDGETARY ESTIMATE DIAGRAM

Test:U:119.9V I:0.3167A P:37.53W PF:0.9882 Freq:60.01Hz Lamp Flux:2078.22x1 lm		
NAME: PT07-44-40S-952C5-MVTD-BN 4000K	TYPE:	WEIGHT:
SPEC.:	DIM.:	SERIAL No.:
MFR.: FOSHAN LEDKEY LIGHTING CO.,LTD.	SUR.:	Shielding Angle:

ρcc	80%			70%			50%			30%			10%			0
ρw	50%	30%	10%	50%	30%	10%	50%	30%	10%	50%	30%	10%	50%	30%	10%	0
ρfc	20%			20%			20%			20%			20%			0
RCR	RCR:Room Cavity Ratio						Coefficients of Utilization(CU)									
0.0	1.06	1.06	1.06	.97	.97	.97	.81	.81	.81	.66	.66	.66	.52	.52	.52	.46
1.0	.89	.84	.79	.81	.77	.73	.67	.64	.61	.54	.52	.49	.42	.40	.39	.33
2.0	.76	.69	.63	.70	.64	.58	.57	.53	.49	.46	.43	.40	.36	.33	.31	.26
3.0	.66	.58	.52	.61	.54	.48	.50	.45	.40	.40	.36	.33	.31	.28	.26	.21
4.0	.58	.50	.43	.54	.46	.40	.44	.38	.34	.36	.31	.28	.27	.24	.22	.18
5.0	.52	.43	.37	.48	.40	.34	.39	.33	.29	.32	.27	.24	.25	.21	.19	.15
6.0	.46	.38	.32	.43	.35	.29	.35	.29	.25	.29	.24	.21	.22	.19	.16	.13
7.0	.42	.33	.28	.38	.31	.26	.32	.26	.22	.26	.21	.18	.20	.17	.14	.12
8.0	.38	.30	.24	.35	.28	.23	.29	.23	.19	.24	.19	.16	.19	.15	.13	.10
9.0	.34	.27	.21	.32	.25	.20	.27	.21	.17	.22	.17	.14	.17	.14	.11	.09
10.0	.31	.24	.19	.29	.22	.18	.24	.19	.15	.20	.16	.13	.16	.13	.10	.08



C Range: 0 - 360DEG
 C Interval: 22.5DEG
 Test Speed: HIGH
 Temperature:25.2°C
 Operators:Dano
 Test Date:2023-06-12

γ Range: 0 - 180DEG
 γ Interval: 1.0DEG
 Test System:EVERFINE GO-R5000_V2 SYSTEM V2.00.459
 Humidity:55.3%
 Test Distance:2.900m [K=0.8810]
 Remarks:

WEC AND CCEC

Test:U:119.9V I:0.3167A P:37.53W PF:0.9882 Freq:60.01Hz Lamp Flux:2078.22x1 lm		
NAME: PT07-44-40S-952C5-MVTD-BN 4000K	TYPE:	WEIGHT:
SPEC.:	DIM.:	SERIAL No.:
MFR.: FOSHAN LEDKEY LIGHTING CO.,LTD.	SUR.:	Shielding Angle:

ρcc	80%			70%			50%			30%			10%			0
ρw	50%	30%	10%	50%	30%	10%	50%	30%	10%	50%	30%	10%	50%	30%	10%	0
ρfc	20%			20%			20%			20%			20%			0
RCR	RCR:Room Cavity Ratio						Wall Exitance Coefficients(WEC)									
0.0																
1.0	.350	.199	.063	.326	.186	.059	.282	.162	.052	.242	.139	.045	.204	.118	.038	
2.0	.301	.165	.051	.280	.154	.048	.240	.133	.041	.202	.114	.036	.168	.095	.030	
3.0	.268	.143	.043	.249	.133	.040	.212	.115	.035	.178	.097	.030	.146	.081	.025	
4.0	.242	.126	.037	.224	.117	.035	.190	.101	.030	.159	.085	.026	.130	.070	.021	
5.0	.221	.113	.033	.205	.105	.031	.173	.090	.027	.144	.076	.023	.117	.063	.019	
6.0	.203	.102	.029	.188	.095	.027	.159	.082	.024	.132	.069	.020	.107	.056	.017	
7.0	.188	.093	.026	.174	.087	.025	.147	.074	.021	.122	.063	.018	.099	.051	.015	
8.0	.175	.085	.024	.162	.080	.023	.137	.068	.020	.114	.058	.017	.092	.047	.014	
9.0	.163	.079	.022	.151	.074	.021	.128	.063	.018	.106	.053	.015	.085	.043	.013	
10.0	.153	.073	.020	.142	.068	.019	.120	.059	.017	.100	.049	.014	.080	.040	.012	

ρcc	80%			70%			50%			30%			10%			0
ρw	50%	30%	10%	50%	30%	10%	50%	30%	10%	50%	30%	10%	50%	30%	10%	0
ρfc	20%			20%			20%			20%			20%			0
RCR	RCR:Room Cavity Ratio						Ceiling Cavity Exitance Coefficients(CCEC)									
0.0	.604	.604	.604	.517	.517	.517	.353	.353	.353	.203	.203	.203	.065	.065	.065	
1.0	.600	.573	.548	.514	.492	.472	.351	.338	.326	.202	.196	.190	.065	.063	.061	
2.0	.594	.552	.517	.508	.475	.447	.348	.329	.312	.201	.191	.183	.064	.062	.060	
3.0	.586	.537	.497	.503	.463	.431	.345	.322	.302	.199	.188	.178	.064	.061	.058	
4.0	.579	.525	.484	.497	.454	.420	.342	.316	.296	.198	.185	.175	.064	.060	.058	
5.0	.572	.516	.474	.492	.446	.413	.339	.312	.291	.196	.183	.173	.063	.060	.057	
6.0	.566	.509	.468	.486	.440	.407	.335	.308	.288	.195	.181	.171	.063	.059	.057	
7.0	.559	.503	.463	.481	.436	.403	.332	.305	.286	.193	.180	.170	.062	.059	.056	
8.0	.553	.497	.459	.476	.431	.400	.330	.303	.284	.192	.179	.169	.062	.059	.056	
9.0	.548	.493	.456	.472	.428	.398	.327	.301	.282	.190	.178	.168	.062	.058	.056	
10.0	.542	.489	.454	.468	.425	.396	.324	.299	.281	.189	.177	.168	.061	.058	.056	

C Range: 0 - 360DEG
 C Interval: 22.5DEG
 Test Speed: HIGH
 Temperature:25.2℃
 Operators:Dano
 Test Date:2023-06-12

γ Range: 0 - 180DEG
 γ Interval: 1.0DEG
 Test System:EVERFINE GO-R5000_V2 SYSTEM V2.00.459
 Humidity:55.3%
 Test Distance:2.900m [K=0.8810]
 Remarks:

UGR(Unified Glare Rating) Table

Test:U:119.9V I:0.3167A P:37.53W PF:0.9882 Freq:60.01Hz										
Lamp Flux:2078.22x1 lm										
NAME: PT07-44-40S-952C5-MVTD-BN 4000K					TYPE:			WEIGHT:		
SPEC.:					DIM.:			SERIAL No.:		
MFR.: FOSHAN LEDKEY LIGHTING CO.,LTD.					SUR.:			Shielding Angle:		
ceiling/cavity	0.7	0.7	0.5	0.5	0.3	0.7	0.7	0.5	0.5	0.3
walls	0.5	0.3	0.5	0.3	0.3	0.5	0.3	0.5	0.3	0.3
working plane	0.2	0.2	0.2	0.2	0.2	0.2	0.2	0.2	0.2	0.2
Room dimensions	Viewed crosswise					Viewed endwise				
x = 2H y = 2H	-0.5	1.4	1.4	3.3	5.8	5.3	7.1	7.1	9.0	11.5
3H	2.7	4.4	4.6	6.4	8.9	7.0	8.7	8.9	10.6	13.2
4H	5.0	6.6	6.9	8.5	11.1	7.6	9.2	9.5	11.1	13.7
6H	8.0	9.5	10.0	11.5	14.1	8.0	9.5	9.9	11.4	14.1
8H	9.6	11.1	11.6	13.1	15.7	8.1	9.5	10.0	11.5	14.1
12H	11.5	12.9	13.5	14.9	17.5	8.1	9.4	10.0	11.4	14.1
4H 2H	-0.4	1.2	1.6	3.2	5.8	6.6	8.2	8.5	10.1	12.7
3H	3.1	4.4	5.0	6.4	9.1	8.6	10.0	10.6	12.0	14.7
4H	5.6	6.8	7.6	8.9	11.6	9.5	10.7	11.5	12.8	15.4
6H	8.9	10.0	10.9	12.1	14.8	10.1	11.2	12.1	13.3	16.0
8H	10.7	11.7	12.7	13.8	16.5	10.3	11.3	12.3	13.4	16.2
12H	12.7	13.7	14.8	15.8	18.5	10.4	11.3	12.5	13.4	16.2
8H 4H	5.7	6.8	7.8	8.8	11.6	11.0	12.1	13.1	14.1	16.9
6H	9.4	10.3	11.5	12.4	15.2	12.2	13.1	14.3	15.2	18.0
8H	11.5	12.3	13.6	14.4	17.2	12.7	13.5	14.8	15.6	18.4
12H	13.8	14.5	15.9	16.6	19.5	13.0	13.7	15.2	15.9	18.7
12H 4H	5.6	6.6	7.7	8.7	11.5	11.6	12.5	13.6	14.6	17.4
6H	9.5	10.2	11.6	12.4	15.2	13.0	13.8	15.2	16.0	18.8
8H	11.7	12.4	13.8	14.5	17.4	13.8	14.5	15.9	16.6	19.5
CIE190: 2010										

CIE190: 2010
Area: 0.36 m2

C Range: 0 - 360DEG
C Interval: 22.5DEG
Test Speed: HIGH
Temperature:25.2℃
Operators:Dano
Test Date:2023-06-12

γ Range: 0 - 180DEG
γ Interval: 1.0DEG
Test System:EVERFINE GO-R5000_V2 SYSTEM V2.00.459
Humidity:55.3%
Test Distance:2.900m [K=0.8810]
Remarks:

UTILIZATION FACTORS TABLE

Test:U:119.9V I:0.3167A P:37.53W PF:0.9882 Freq:60.01Hz Lamp Flux:2078.22x1 lm		
NAME: PT07-44-40S-952C5-MVTD-BN 4000K	TYPE:	WEIGHT:
SPEC.:	DIM.:	SERIAL No.:
MFR.: FOSHAN LEDKEY LIGHTING CO.,LTD.	SUR.:	Shielding Angle:

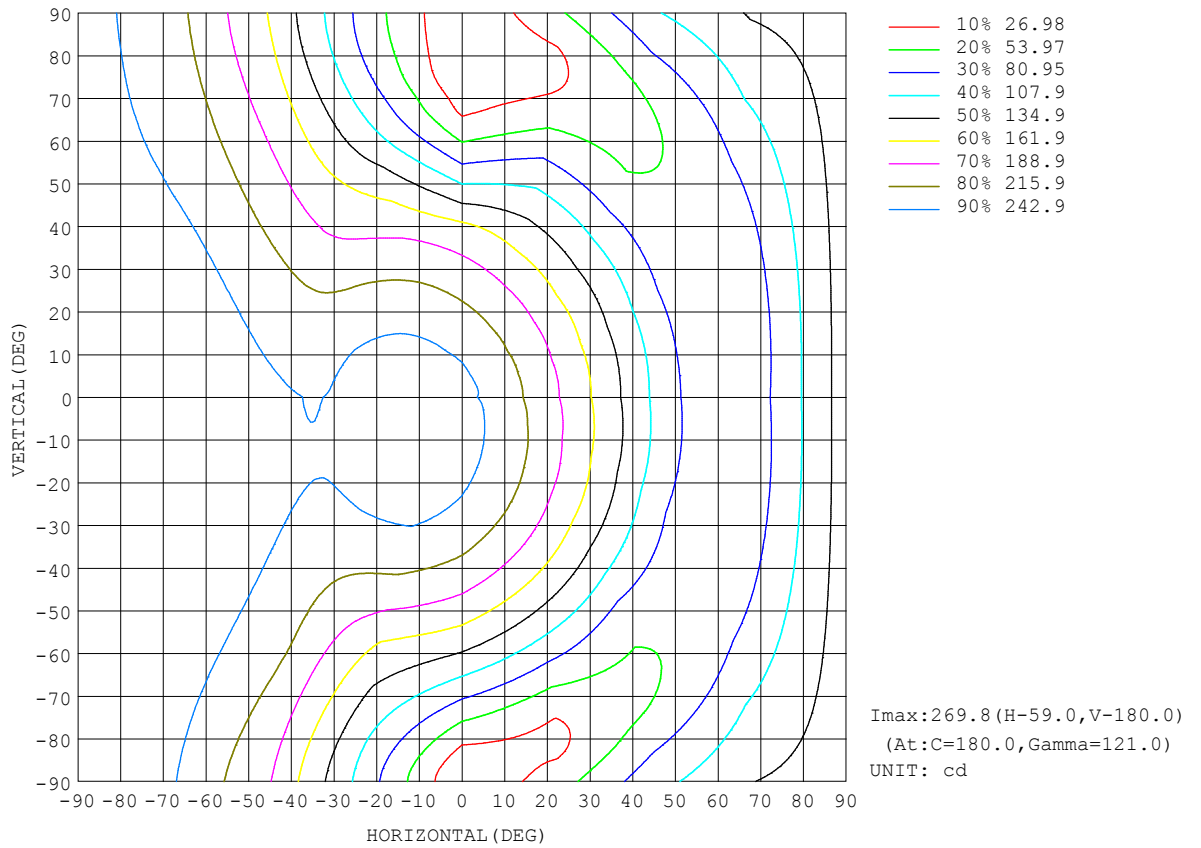
REFLECTANCE										
Ceiling	0.8	0.8	0.8	0.7	0.7	0.7	0.5	0.5	0.5	0
Walls	0.7	0.5	0.3	0.7	0.5	0.3	0.7	0.5	0.3	0
Working plane	0.2	0.2	0.2	0.2	0.2	0.2	0.2	0.2	0.2	0
ROOM INDEX	UTILIZATION FACTORS (PERCENT) $k(RI) \times RCR = 5$									
k = 0.60	39	27	21	37	26	20	33	24	18	11
0.80	48	35	28	45	33	26	39	30	24	14
1.00	55	42	34	51	40	32	44	37	29	17
1.25	62	49	41	57	46	38	49	40	34	20
1.50	67	55	46	62	51	43	53	44	38	22
2.00	74	63	55	69	59	51	58	50	44	25
2.50	79	69	60	73	64	56	61	54	49	28
3.00	83	73	66	76	68	61	64	58	52	29
4.00	88	79	73	80	73	67	67	62	57	32
5.00	91	84	77	83	77	72	69	65	61	34
ROOM INDEX	UF(total)									Direct
According to DIN EN 13032-2 2004			Suspended				SHRNOM = 1.25			

C Range: 0 - 360DEG
 C Interval: 22.5DEG
 Test Speed: HIGH
 Temperature:25.2°C
 Operators:Dano
 Test Date:2023-06-12

γ Range: 0 - 180DEG
 γ Interval: 1.0DEG
 Test System:EVERFINE GO-R5000_V2 SYSTEM V2.00.459
 Humidity:55.3%
 Test Distance:2.900m [K=0.8810]
 Remarks:

ISOCANDELA DIAGRAM

Test:U:119.9V I:0.3167A P:37.53W PF:0.9882 Freq:60.01Hz Lamp Flux:2078.22x1 lm		
NAME: PT07-44-40S-952C5-MVTD-BN 4000K	TYPE:	WEIGHT:
SPEC.:	DIM.:	SERIAL No.:
MFR.: FOSHAN LEDKEY LIGHTING CO.,LTD.	SUR.:	Shielding Angle:



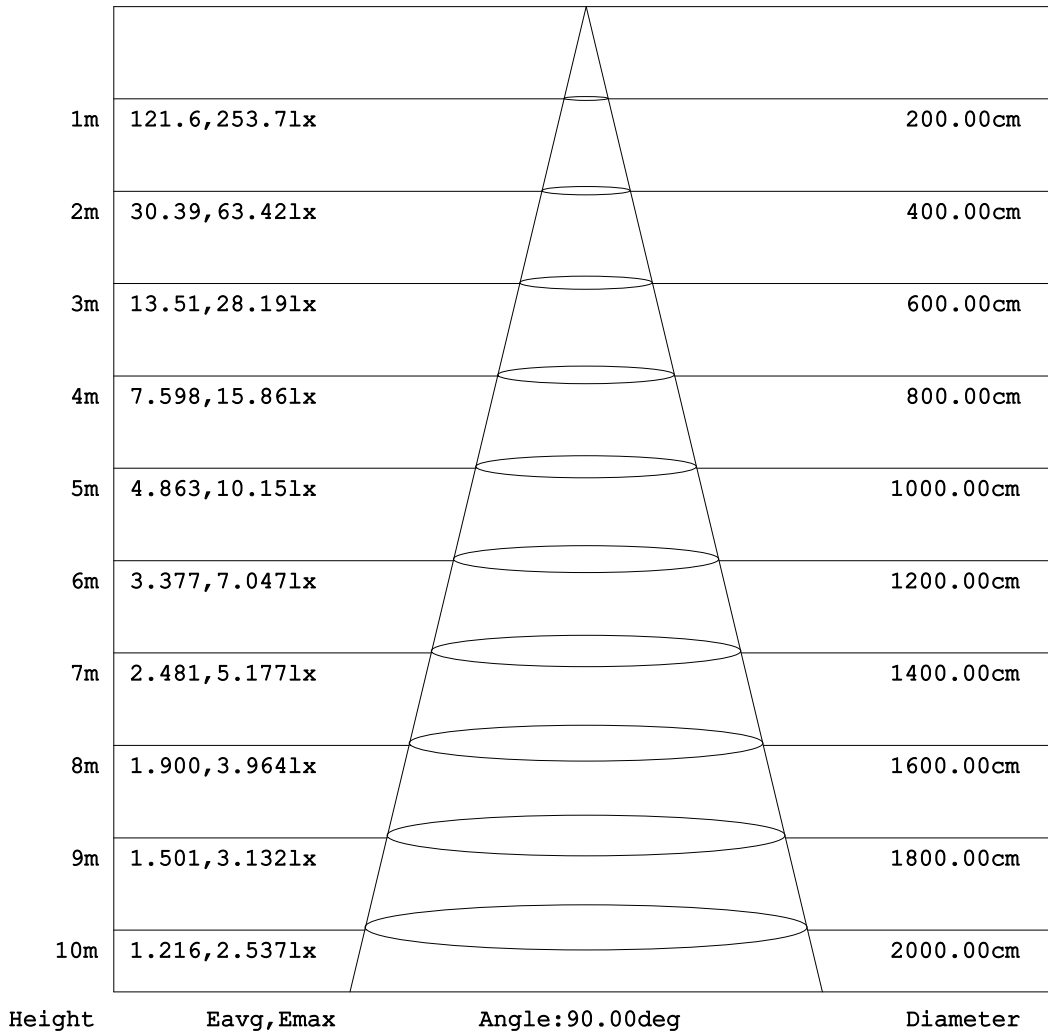
C Range: 0 - 360DEG
C Interval: 22.5DEG
Test Speed: HIGH
Temperature:25.2°C
Operators:Dano
Test Date:2023-06-12

γ Range: 0 - 180DEG
γ Interval: 1.0DEG
Test System:EVERFINE GO-R5000_V2 SYSTEM V2.00.459
Humidity:55.3%
Test Distance:2.900m [K=0.8810]
Remarks:

AAI Figure

Test:U:119.9V I:0.3167A P:37.53W PF:0.9882 Freq:60.01Hz Lamp Flux:2078.22x1 lm		
NAME: PT07-44-40S-952C5-MVTD-BN 4000K	TYPE:	WEIGHT:
SPEC.:	DIM.:	SERIAL No.:
MFR.: FOSHAN LEDKEY LIGHTING CO.,LTD.	SUR.:	Shielding Angle:

Flux out:381.9 lm



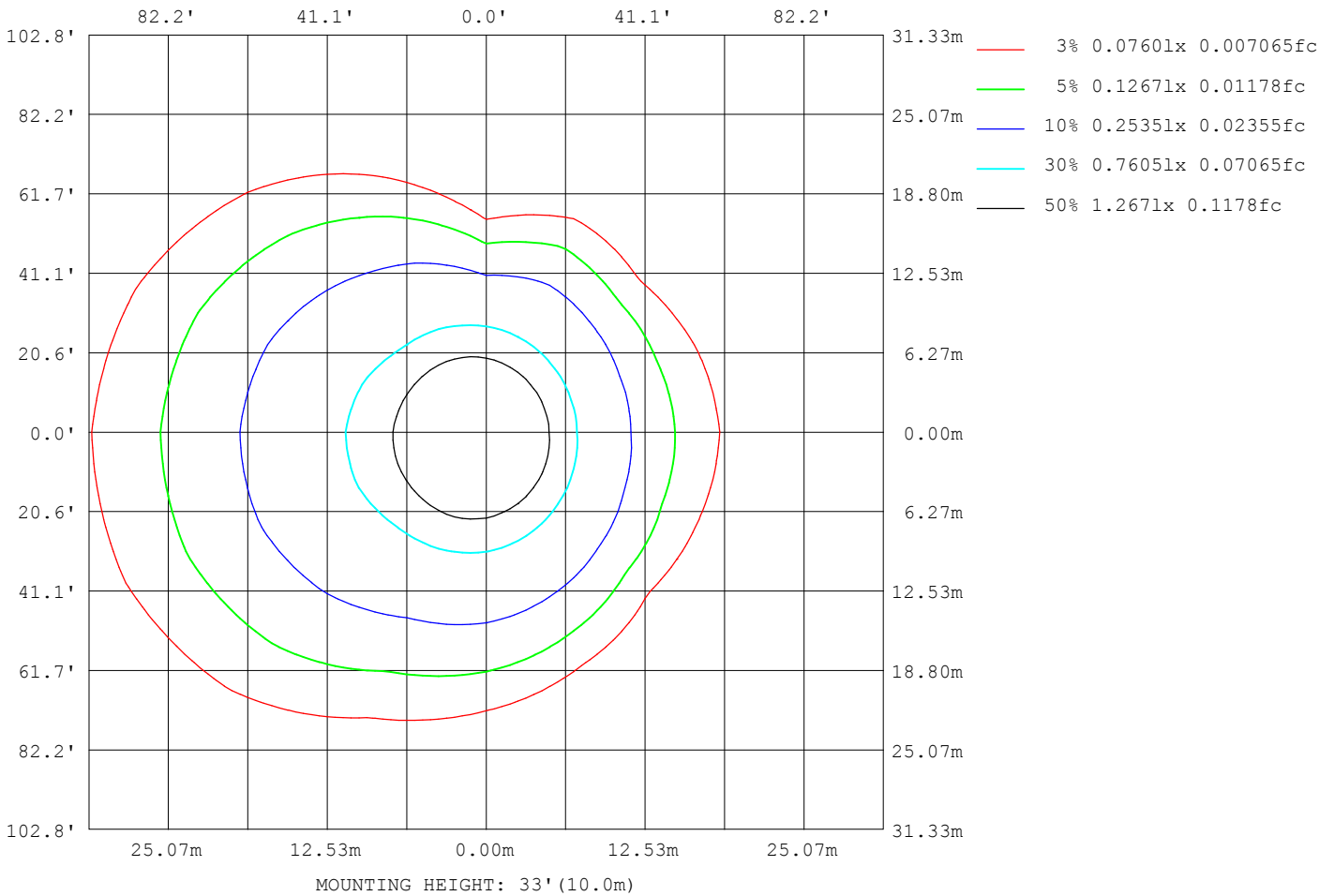
Note:The Curves indicate the illuminated area and the average illumination when the luminaire is at different distance.

C Range: 0 - 360DEG
 C Interval: 22.5DEG
 Test Speed: HIGH
 Temperature:25.2℃
 Operators:Dano
 Test Date:2023-06-12

γ Range: 0 - 180DEG
 γ Interval: 1.0DEG
 Test System:EVERFINE GO-R5000_V2 SYSTEM V2.00.459
 Humidity:55.3%
 Test Distance:2.900m [K=0.8810]
 Remarks:

ISOLUX DIAGRAM

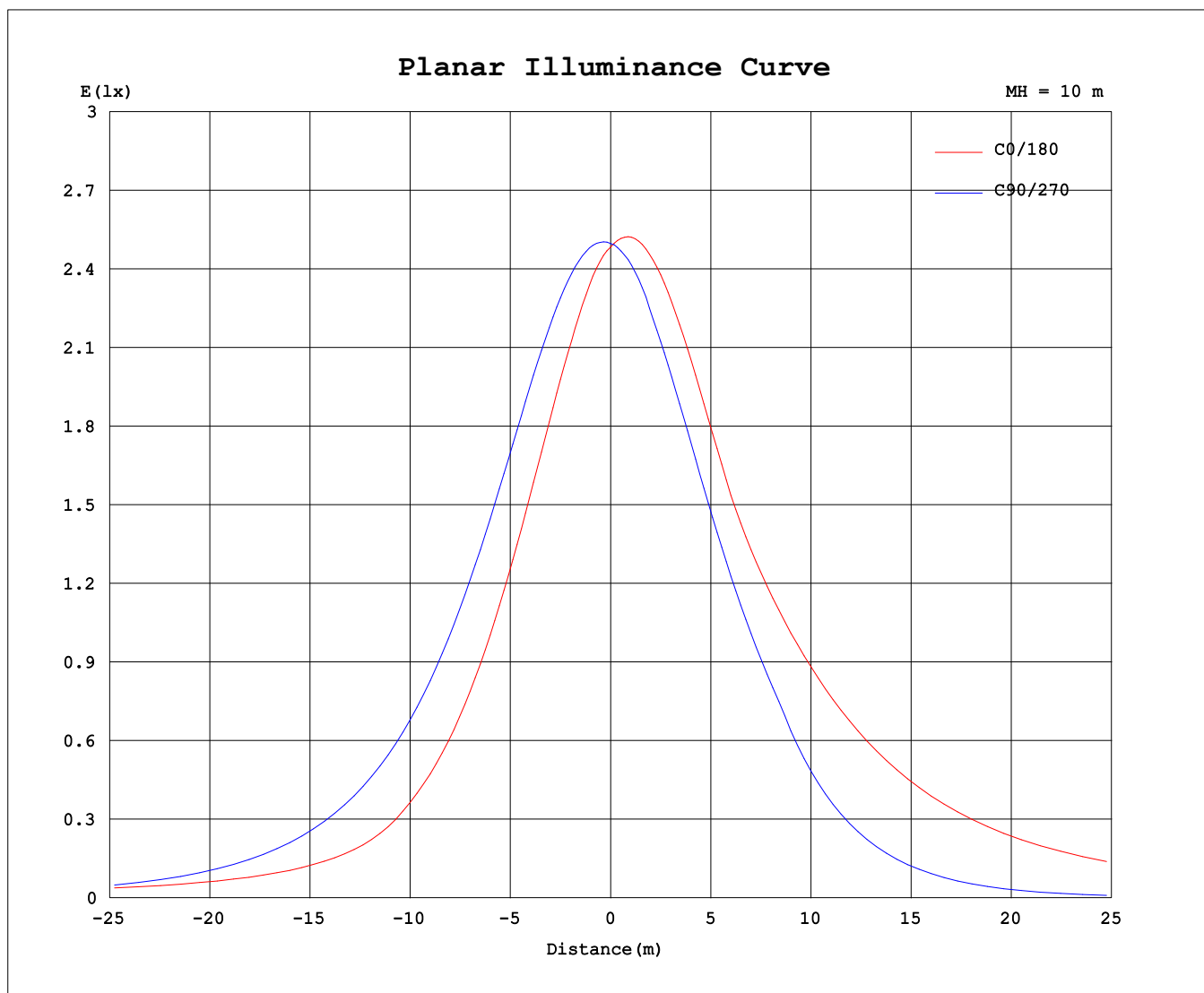
Test:U:119.9V I:0.3167A P:37.53W PF:0.9882 Freq:60.01Hz Lamp Flux:2078.22x1 lm		
NAME: PT07-44-40S-952C5-MVTD-BN 4000K	TYPE:	WEIGHT:
SPEC.:	DIM.:	SERIAL No.:
MFR.: FOSHAN LEDKEY LIGHTING CO.,LTD.	SUR.:	Shielding Angle:



C Range: 0 - 360DEG
 C Interval: 22.5DEG
 Test Speed: HIGH
 Temperature:25.2°C
 Operators:Dano
 Test Date:2023-06-12

γ Range: 0 - 180DEG
 γ Interval: 1.0DEG
 Test System:EVERFINE GO-R5000_V2 SYSTEM V2.00.459
 Humidity:55.3%
 Test Distance:2.900m [K=0.8810]
 Remarks:

Planar Illuminance Curve



C Range: 0 - 360DEG
C Interval: 22.5DEG
Test Speed: HIGH
Temperature: 25.2°C
Operators: Dano
Test Date: 2023-06-12

γ Range: 0 - 180DEG
γ Interval: 1.0DEG
Test System: EVERFINE GO-R5000_V2 SYSTEM V2.00.459
Humidity: 55.3%
Test Distance: 2.900m [K=0.8810]
Remarks:

LUMINOUS DISTRIBUTION INTENSITY DATA

Test:U:119.9V I:0.3167A P:37.53W PF:0.9882 Freq:60.01Hz Lamp Flux:2078.22x1 lm		
NAME: PT07-44-40S-952C5-MVTD-BN 4000K	TYPE:	WEIGHT:
SPEC.:	DIM.:	SERIAL No.:
MFR.: FOSHAN LEDKEY LIGHTING CO.,LTD.	SUR.:	Shielding Angle:

Table--1

UNIT: cd

C (DEG) γ (DEG)	0	22.5	45	67.5	90	112.5	135	157.5	180	202.5	225	247.5	270	292.5	315	337.5			
0	250	250	250	250	250	250	250	250	250	250	250	250	250	250	250	250			
5	241	243	246	249	252	254	256	256	256	254	251	248	246	243	241	241			
10	229	233	239	245	252	258	261	261	261	256	251	245	240	233	229	228			
15	215	220	230	240	250	258	262	262	262	256	249	240	231	222	216	214			
20	199	206	218	233	246	257	261	262	260	252	243	233	221	210	202	198			
25	182	190	205	223	240	253	258	258	255	246	236	224	210	197	186	181			
30	164	173	190	211	232	246	251	251	247	238	227	213	197	182	169	163			
35	144	154	173	197	221	238	243	244	243	229	216	201	184	166	152	144			
40	124	135	155	181	208	226	231	245	246	227	202	187	167	149	133	124			
45	104	114	135	164	192	212	225	248	251	229	192	172	137	131	114	104			
50	84.7	92.1	113	144	175	196	222	251	256	231	187	156	107	112	94.1	83.7			
55	74.8	76.6	91.3	122	155	178	220	255	261	234	184	138	78.5	93.1	73.9	70.8			
60	70.6	68.6	69.8	99.4	133	160	219	258	264	236	181	120	52.5	73.3	57.4	65.2			
65	71.0	65.5	56.7	75.2	110	146	217	259	266	237	179	106	30.2	53.4	49.8	64.5			
70	76.4	67.7	50.1	51.0	84.6	133	213	259	267	237	176	94.6	15.0	34.3	48.3	68.9			
75	90.6	77.5	50.3	30.2	58.6	121	209	257	266	235	172	84.8	2.71	23.4	53.2	80.6			
80	110	96.8	61.8	21.0	33.7	110	203	254	263	233	168	76.6	0.40	22.4	68.4	100			
85	130	116	80.1	26.8	12.3	100	196	249	260	229	163	70.8	0.45	33.8	87.1	118			
90	148	134	98.2	42.4	0.79	94.2	190	244	256	225	160	68.3	0.43	49.9	105	137			
95	166	151	116	58.7	7.00	96.2	186	240	253	223	159	73.8	3.94	66.2	123	154			
100	182	168	132	75.0	23.7	109	190	240	252	223	165	85.0	19.1	82.2	139	171			
105	197	183	147	90.5	43.9	120	201	248	258	231	175	95.0	37.7	98.6	155	186			
110	211	196	161	105	66.6	130	209	255	265	239	182	104	58.7	114	168	199			
115	222	208	173	118	90.2	138	214	259	270	243	188	114	79.2	125	180	211			
120	232	218	184	128	112	151	217	261	271	246	192	129	102	136	191	221			
125	239	225	192	138	134	166	217	259	270	245	194	144	123	147	199	228			
130	244	230	198	150	155	180	217	255	265	242	197	159	143	156	204	233			
135	245	232	197	164	173	193	221	248	258	237	204	171	163	166	203	234			
140	244	232	200	178	190	201	227	245	252	237	213	183	183	179	199	233			
145	240	229	196	189	202	214	233	246	250	240	223	200	191	188	201	229			
150	233	223	203	199	200	226	237	247	251	244	231	217	180	190	203	209			
155	227	220	210	191	193	234	235	248	251	248	234	231	170	177	200	212			
160	228	220	199	180	184	227	245	242	247	244	237	238	171	163	181	212			
165	229	217	182	167	171	194	247	250	249	248	245	234	162	156	170	182			
170	234	182	171	175	174	178	220	246	253	252	237	216	176	170	172	167			
175	205	147	184	188	190	185	191	194	209	209	200	191	184	187	186	182			
180	0.00	163	186	198	201	197	179	150	89.5	90.9	163	185	197	200	196	181			

C Range: 0 - 360DEG
 C Interval: 22.5DEG
 Test Speed: HIGH
 Temperature:25.2℃
 Operators:Dano
 Test Date:2023-06-12

γ Range: 0 - 180DEG
 γ Interval: 1.0DEG
 Test System:EVERFINE GO-R5000_V2 SYSTEM V2.00.459
 Humidity:55.3%
 Test Distance:2.900m [K=0.8810]
 Remarks: