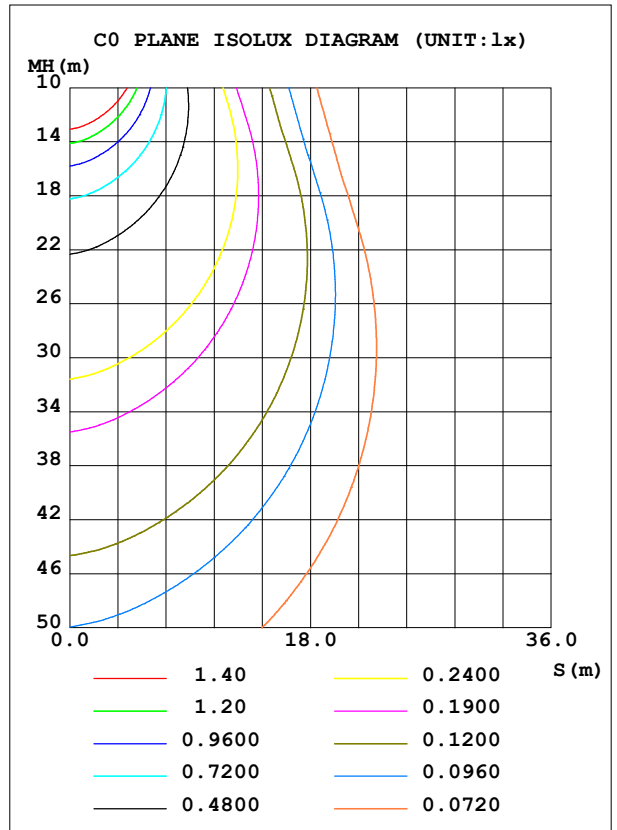
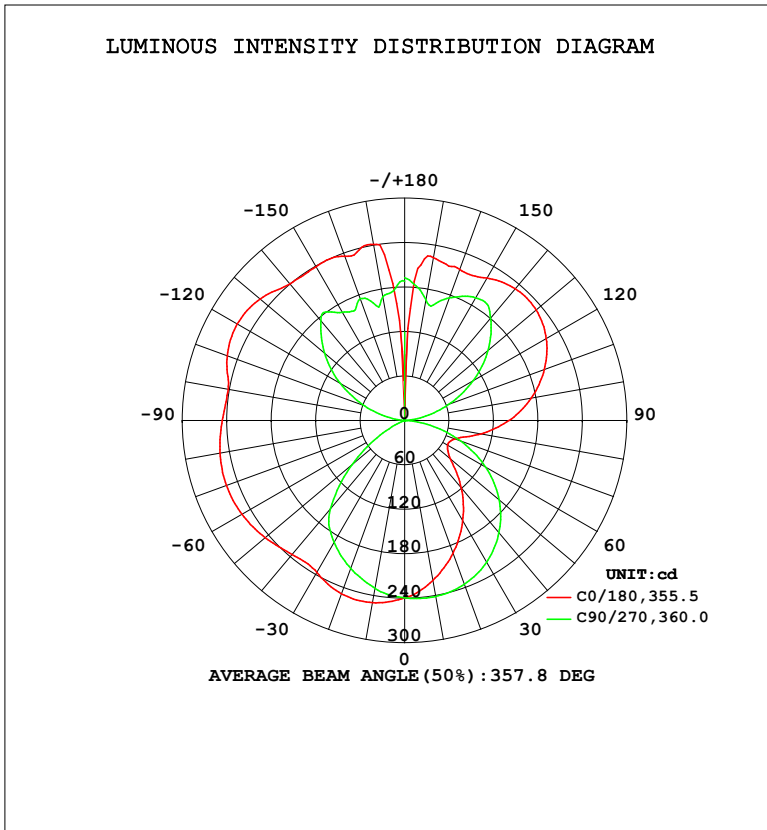


LUMINAIRE PHOTOMETRIC TEST REPORT

Test:U:119.9V I:0.3181A P:37.70W PF:0.9884 Freq:60.01Hz Lamp Flux:1991.1x1 lm		
NAME: PT07-44-40S-952C5-MVTD-BN 3500K	TYPE:	WEIGHT:
SPEC.:	DIM.:	SERIAL No.:
MFR.: FOSHAN LEDKEY LIGHTING CO.,LTD.	SUR.:	Shielding Angle:

DATA OF LAMP		PHOTOMETRIC DATA				Eff: 52.81 lm/W
MODEL		I _{max} (cd)	260.7	S/MH (C0/180)	1.51	
NOMINAL POWER (W)		LOR (%)	100.0	S/MH (C90/270)	1.19	
RATED VOLTAGE (V)	120	TOTAL FLUX (lm)	1991.1	η UP, DN (C0-180)	27.2, 22.9	
NOMINAL FLUX (lm)	1991.1	CIE CLASS	DIFFUSE	η UP, DN (C180-360)	27.2, 22.7	
LAMPS INSIDE	1	η up (%)	54.4	CIBSE SHR NOM	1.25	
TEST VOLTAGE (V)	120	η down (%)	45.6	CIBSE SHR MAX	1.35	



C Range: 0 - 360DEG
 C Interval: 22.5DEG
 Test Speed: HIGH
 Temperature: 25.2°C
 Operators: Dano
 Test Date: 2023-06-12

γ Range: 0 - 180DEG
 γ Interval: 1.0DEG
 Test System: EVERFINE GO-R5000_V2 SYSTEM V2.00.459
 Humidity: 55.3%
 Test Distance: 2.900m [K=0.8810]
 Remarks:

ZONAL FLUX DIAGRAM

ZONAL FLUX DIAGRAM:

γ	C0	C45	C90	C135	C180	C225	C270	C315	γ	Φ zone	Φ total	%lum,lamp
10	219.4	229.0	241.2	250.0	249.7	241.4	230.4	220.1	0- 10	22.66	22.66	1.14,1.14
20	190.8	208.8	235.4	251.5	249.0	234.2	212.8	193.9	10- 20	64.75	87.41	4.39,4.39
30	157.0	181.4	221.2	242.2	236.8	218.1	190.3	163.0	20- 30	97.92	185.3	9.31,9.31
40	119.0	147.2	198.1	222.9	236.2	194.8	155.9	128.4	30- 40	118.3	303.6	15.2,15.2
50	80.69	107.6	166.4	212.3	245.9	182.1	92.86	91.15	40- 50	125.8	429.4	21.6,21.6
60	67.17	66.27	126.3	208.3	253.5	177.4	33.93	55.04	50- 60	123.3	552.7	27.8,27.8
70	72.65	48.82	79.39	202.6	256.1	172.7	0.4914	45.06	60- 70	117.3	670.0	33.7,33.7
80	105.0	61.20	30.83	191.9	253.0	165.3	1.436	63.04	70- 80	115.4	785.5	39.4,39.4
90	141.0	96.15	0.5709	179.4	246.1	157.5	0.4130	98.46	80- 90	122.9	908.3	45.6,45.6
100	173.3	128.5	21.69	180.7	241.9	162.0	17.00	131.1	90-100	136.4	1045	52.5,52.5
110	200.6	156.3	62.40	198.4	254.9	178.8	57.07	158.9	100-110	156.1	1201	60.3,60.3
120	220.8	177.9	106.1	206.3	260.7	187.9	100.4	180.3	110-120	168.5	1369	68.8,68.8
130	231.9	191.6	147.0	207.2	254.8	191.4	141.2	193.6	120-130	167.6	1537	77.2,77.2
140	232.2	192.9	180.6	218.0	240.9	205.8	176.0	189.8	130-140	153.6	1691	84.9,84.9
150	222.0	194.5	191.4	227.1	239.5	222.1	168.9	194.1	140-150	130.0	1821	91.4,91.4
160	217.1	189.1	176.2	236.0	235.9	227.2	175.1	171.9	150-160	96.39	1917	96.3,96.3
170	223.3	163.2	165.9	210.8	241.4	227.8	169.9	165.5	160-170	56.48	1973	99.1,99.1
180	0	176.5	192.8	173.5	89.24	155.7	188.1	187.8	170-180	17.66	1991	100,100
DEG	LUMINOUS INTENSITY:cd									UNIT:lm		

Conical surface Flux(90deg): 366.32 lm

%lum = 18.4%

%lamp = 18.4%

Conical surface Flux(120deg): 552.73 lm

%lum = 27.8%

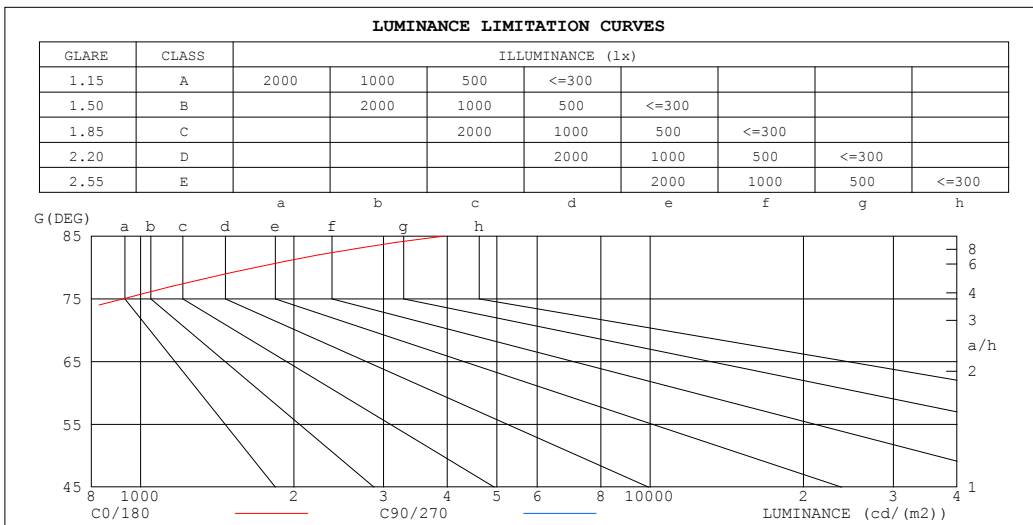
%lamp = 27.8%

C Range: 0 - 360DEG
C Interval: 22.5DEG
Test Speed: HIGH
Temperature:25.2℃
Operators:Dano
Test Date:2023-06-12

γ Range: 0 - 180DEG
 γ Interval: 1.0DEG
Test System:EVERFINE GO-R5000_V2 SYSTEM V2.00.459
Humidity:55.3%
Test Distance:2.900m [K=0.8810]
Remarks:

LUMINANCE LIMITATION CURVES

Test:U:119.9V I:0.3181A P:37.70W PF:0.9884 Freq:60.01Hz Lamp Flux:1991.1x1 lm		
NAME: PT07-44-40S-952C5-MVTD-BN 3500K	TYPE:	WEIGHT:
SPEC.:	DIM.:	SERIAL No.:
MFR.: FOSHAN LEDKEY LIGHTING CO.,LTD.	SUR.:	Shielding Angle:



LUMINANCE cd/(m2)		
G (DEG)	C0/180	C90/270
85	3931	350
80	1679	493
75	923	586
70	590	645
65	444	681
60	373	702
55	345	713
50	349	719
45	389	720

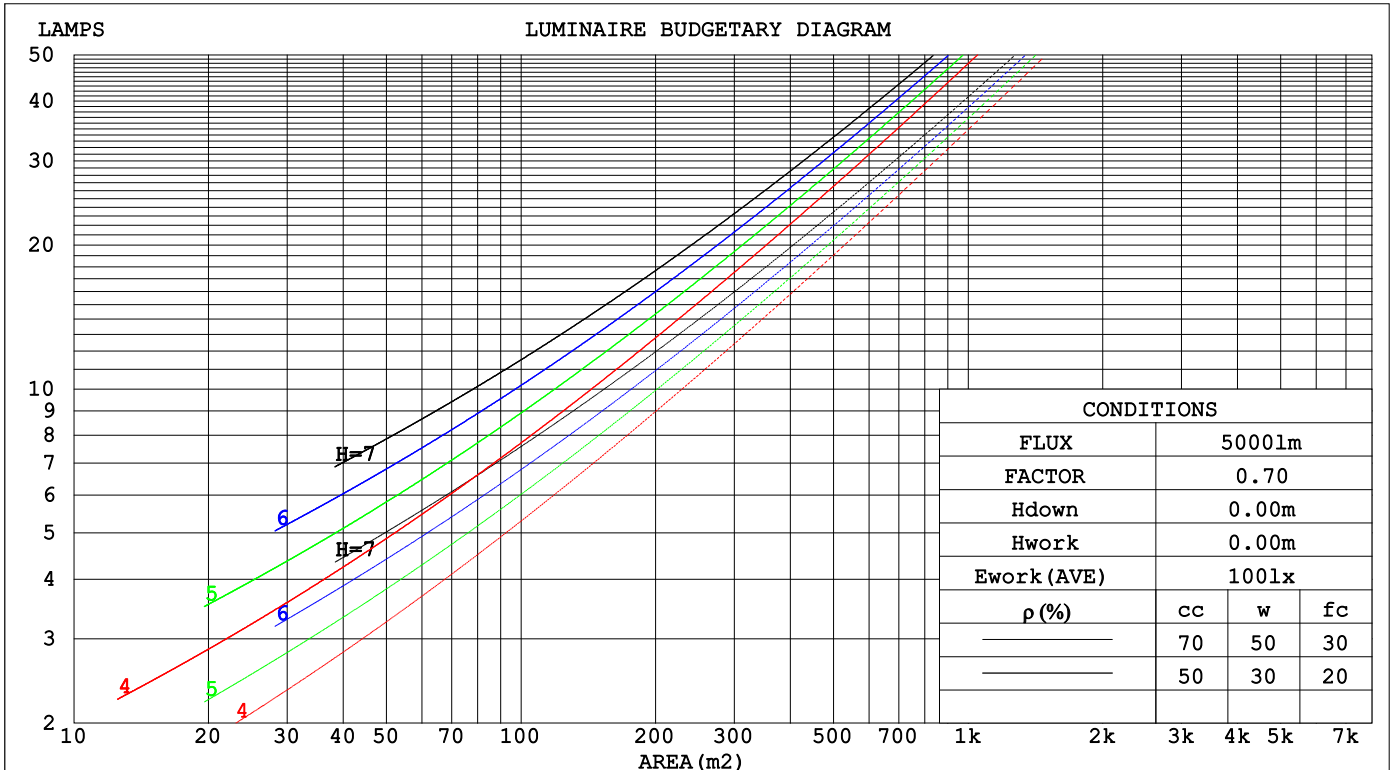
C Range: 0 - 360DEG
 C Interval: 22.5DEG
 Test Speed: HIGH
 Temperature: 25.2°C
 Operators: Dano
 Test Date: 2023-06-12

γ Range: 0 - 180DEG
 γ Interval: 1.0DEG
 Test System: EVERFINE GO-R5000_V2 SYSTEM V2.00.459
 Humidity: 55.3%
 Test Distance: 2.900m [K=0.8810]
 Remarks:

CU AND LUMINAIRE BUDGETARY ESTIMATE DIAGRAM

Test:U:119.9V I:0.3181A P:37.70W PF:0.9884 Freq:60.01Hz Lamp Flux:1991.1x1 lm		
NAME: PT07-44-40S-952C5-MVTD-BN 3500K	TYPE:	WEIGHT:
SPEC.:	DIM.:	SERIAL No.:
MFR.: FOSHAN LEDKEY LIGHTING CO.,LTD.	SUR.:	Shielding Angle:

ρcc	80%			70%			50%			30%			10%			0
ρw	50%	30%	10%	50%	30%	10%	50%	30%	10%	50%	30%	10%	50%	30%	10%	0
ρfc	20%			20%			20%			20%			20%			0
RCR	RCR:Room Cavity Ratio						Coefficients of Utilization(CU)									
0.0	1.06	1.06	1.06	.97	.97	.97	.81	.81	.81	.66	.66	.66	.52	.52	.52	.46
1.0	.89	.84	.79	.81	.77	.73	.67	.64	.61	.54	.52	.49	.42	.40	.39	.33
2.0	.76	.69	.63	.70	.64	.58	.57	.53	.49	.46	.43	.40	.36	.33	.31	.26
3.0	.66	.58	.52	.61	.54	.48	.50	.45	.40	.40	.36	.33	.31	.28	.26	.21
4.0	.58	.50	.43	.54	.46	.40	.44	.38	.34	.36	.31	.28	.27	.24	.22	.18
5.0	.52	.43	.37	.48	.40	.34	.39	.33	.29	.32	.27	.24	.25	.21	.19	.15
6.0	.46	.38	.32	.43	.35	.29	.35	.29	.25	.29	.24	.21	.22	.19	.16	.13
7.0	.42	.33	.28	.38	.31	.26	.32	.26	.22	.26	.21	.18	.20	.17	.14	.12
8.0	.38	.30	.24	.35	.28	.23	.29	.23	.19	.24	.19	.16	.19	.15	.13	.10
9.0	.34	.27	.21	.32	.25	.20	.27	.21	.17	.22	.17	.14	.17	.14	.11	.09
10.0	.31	.24	.19	.29	.22	.18	.24	.19	.15	.20	.16	.13	.16	.13	.10	.08



C Range: 0 - 360DEG
 C Interval: 22.5DEG
 Test Speed: HIGH
 Temperature:25.2°C
 Operators:Dano
 Test Date:2023-06-12

γ Range: 0 - 180DEG
 γ Interval: 1.0DEG
 Test System:EVERFINE GO-R5000_V2 SYSTEM V2.00.459
 Humidity:55.3%
 Test Distance:2.900m [K=0.8810]
 Remarks:

WEC AND CCEC

Test:U:119.9V I:0.3181A P:37.70W PF:0.9884 Freq:60.01Hz Lamp Flux:1991.1x1 lm		
NAME: PT07-44-40S-952C5-MVTD-BN 3500K	TYPE:	WEIGHT:
SPEC.:	DIM.:	SERIAL No.:
MFR.: FOSHAN LEDKEY LIGHTING CO.,LTD.	SUR.:	Shielding Angle:

ρcc	80%			70%			50%			30%			10%			0
ρw	50%	30%	10%	50%	30%	10%	50%	30%	10%	50%	30%	10%	50%	30%	10%	0
ρfc	20%			20%			20%			20%			20%			0
RCR	RCR:Room Cavity Ratio						Wall Exitance Coefficients(WEC)									
0.0																
1.0	.350	.199	.063	.326	.186	.059	.282	.162	.052	.242	.139	.045	.204	.118	.038	
2.0	.301	.165	.051	.280	.154	.047	.239	.133	.041	.202	.113	.036	.168	.095	.030	
3.0	.268	.143	.043	.248	.133	.040	.212	.115	.035	.177	.097	.030	.146	.081	.025	
4.0	.242	.126	.037	.224	.117	.035	.190	.101	.030	.159	.085	.026	.129	.070	.021	
5.0	.221	.113	.033	.204	.105	.031	.173	.090	.027	.144	.076	.023	.117	.062	.019	
6.0	.203	.102	.029	.188	.095	.027	.159	.082	.024	.132	.069	.020	.107	.056	.017	
7.0	.188	.093	.026	.174	.087	.025	.147	.074	.021	.122	.063	.018	.098	.051	.015	
8.0	.175	.085	.024	.162	.080	.023	.137	.068	.020	.113	.057	.017	.091	.047	.014	
9.0	.163	.079	.022	.151	.074	.021	.128	.063	.018	.106	.053	.015	.085	.043	.013	
10.0	.153	.073	.020	.142	.068	.019	.120	.059	.017	.099	.049	.014	.080	.040	.012	

ρcc	80%			70%			50%			30%			10%			0
ρw	50%	30%	10%	50%	30%	10%	50%	30%	10%	50%	30%	10%	50%	30%	10%	0
ρfc	20%			20%			20%			20%			20%			0
RCR	RCR:Room Cavity Ratio						Ceiling Cavity Exitance Coefficients(CCEC)									
0.0	.605	.605	.605	.517	.517	.517	.353	.353	.353	.203	.203	.203	.065	.065	.065	
1.0	.601	.574	.549	.514	.492	.472	.352	.339	.327	.202	.196	.190	.065	.063	.061	
2.0	.594	.552	.517	.509	.476	.447	.349	.329	.312	.201	.191	.183	.065	.062	.060	
3.0	.587	.537	.497	.503	.463	.431	.345	.322	.302	.200	.188	.178	.064	.061	.058	
4.0	.580	.525	.484	.497	.454	.420	.342	.316	.296	.198	.185	.175	.064	.060	.058	
5.0	.573	.516	.475	.492	.447	.413	.339	.312	.292	.196	.183	.173	.063	.060	.057	
6.0	.566	.509	.468	.487	.441	.408	.336	.309	.288	.195	.182	.171	.063	.059	.057	
7.0	.560	.503	.463	.482	.436	.404	.333	.306	.286	.193	.180	.170	.062	.059	.056	
8.0	.554	.498	.459	.477	.432	.401	.330	.303	.284	.192	.179	.169	.062	.059	.056	
9.0	.548	.493	.457	.472	.428	.398	.327	.301	.283	.191	.178	.169	.062	.058	.056	
10.0	.543	.490	.454	.468	.425	.396	.325	.299	.282	.189	.177	.168	.061	.058	.056	

C Range: 0 - 360DEG
 C Interval: 22.5DEG
 Test Speed: HIGH
 Temperature:25.2℃
 Operators:Dano
 Test Date:2023-06-12

γ Range: 0 - 180DEG
 γ Interval: 1.0DEG
 Test System:EVERFINE GO-R5000_V2 SYSTEM V2.00.459
 Humidity:55.3%
 Test Distance:2.900m [K=0.8810]
 Remarks:

UGR(Unified Glare Rating) Table

Test:U:119.9V I:0.3181A P:37.70W PF:0.9884 Freq:60.01Hz										
Lamp Flux:1991.1x1 lm										
NAME: PT07-44-40S-952C5-MVTD-BN 3500K					TYPE:			WEIGHT:		
SPEC.:					DIM.:			SERIAL No.:		
MFR.: FOSHAN LEDKEY LIGHTING CO.,LTD.					SUR.:			Shielding Angle:		
ceiling/cavity	0.7	0.7	0.5	0.5	0.3	0.7	0.7	0.5	0.5	0.3
walls	0.5	0.3	0.5	0.3	0.3	0.5	0.3	0.5	0.3	0.3
working plane	0.2	0.2	0.2	0.2	0.2	0.2	0.2	0.2	0.2	0.2
Room dimensions	Viewed crosswise					Viewed endwise				
x = 2H y = 2H	-0.6	1.3	1.3	3.2	5.7	5.0	6.9	6.9	8.8	11.3
3H	2.6	4.3	4.5	6.2	8.8	6.7	8.4	8.6	10.3	12.9
4H	4.9	6.5	6.8	8.4	11.0	7.3	8.9	9.2	10.8	13.4
6H	7.8	9.3	9.8	11.3	13.9	7.6	9.1	9.6	11.1	13.7
8H	9.5	10.9	11.5	12.9	15.6	7.7	9.1	9.7	11.1	13.8
12H	11.3	12.7	13.3	14.7	17.4	7.7	9.0	9.7	11.0	13.7
4H 2H	-0.5	1.1	1.4	3.1	5.7	6.3	7.9	8.3	9.9	12.5
3H	2.9	4.3	4.9	6.3	9.0	8.3	9.7	10.3	11.7	14.4
4H	5.5	6.7	7.5	8.8	11.5	9.1	10.4	11.1	12.4	15.1
6H	8.8	9.9	10.8	11.9	14.6	9.7	10.8	11.8	12.9	15.6
8H	10.6	11.6	12.6	13.7	16.4	9.9	10.9	11.9	13.0	15.8
12H	12.6	13.5	14.6	15.6	18.4	10.0	10.9	12.0	13.0	15.8
8H 4H	5.6	6.7	7.7	8.7	11.5	10.7	11.8	12.8	13.9	16.6
6H	9.3	10.2	11.4	12.3	15.1	11.9	12.7	13.9	14.9	17.6
8H	11.4	12.2	13.5	14.3	17.1	12.3	13.1	14.4	15.2	18.0
12H	13.7	14.4	15.8	16.5	19.4	12.6	13.3	14.8	15.5	18.3
12H 4H	5.6	6.5	7.6	8.6	11.4	11.3	12.2	13.4	14.3	17.1
6H	9.4	10.1	11.5	12.3	15.1	12.7	13.5	14.8	15.6	18.5
8H	11.6	12.3	13.7	14.4	17.3	13.4	14.1	15.6	16.3	19.1
CIE190: 2010										

CIE190: 2010
Area: 0.36 m2

C Range: 0 - 360DEG
C Interval: 22.5DEG
Test Speed: HIGH
Temperature:25.2℃
Operators:Dano
Test Date:2023-06-12

γ Range: 0 - 180DEG
γ Interval: 1.0DEG
Test System:EVERFINE GO-R5000_V2 SYSTEM V2.00.459
Humidity:55.3%
Test Distance:2.900m [K=0.8810]
Remarks:

UTILIZATION FACTORS TABLE

Test:U:119.9V I:0.3181A P:37.70W PF:0.9884 Freq:60.01Hz Lamp Flux:1991.1x1 lm		
NAME: PT07-44-40S-952C5-MVTD-BN 3500K	TYPE:	WEIGHT:
SPEC.:	DIM.:	SERIAL No.:
MFR.: FOSHAN LEDKEY LIGHTING CO.,LTD.	SUR.:	Shielding Angle:

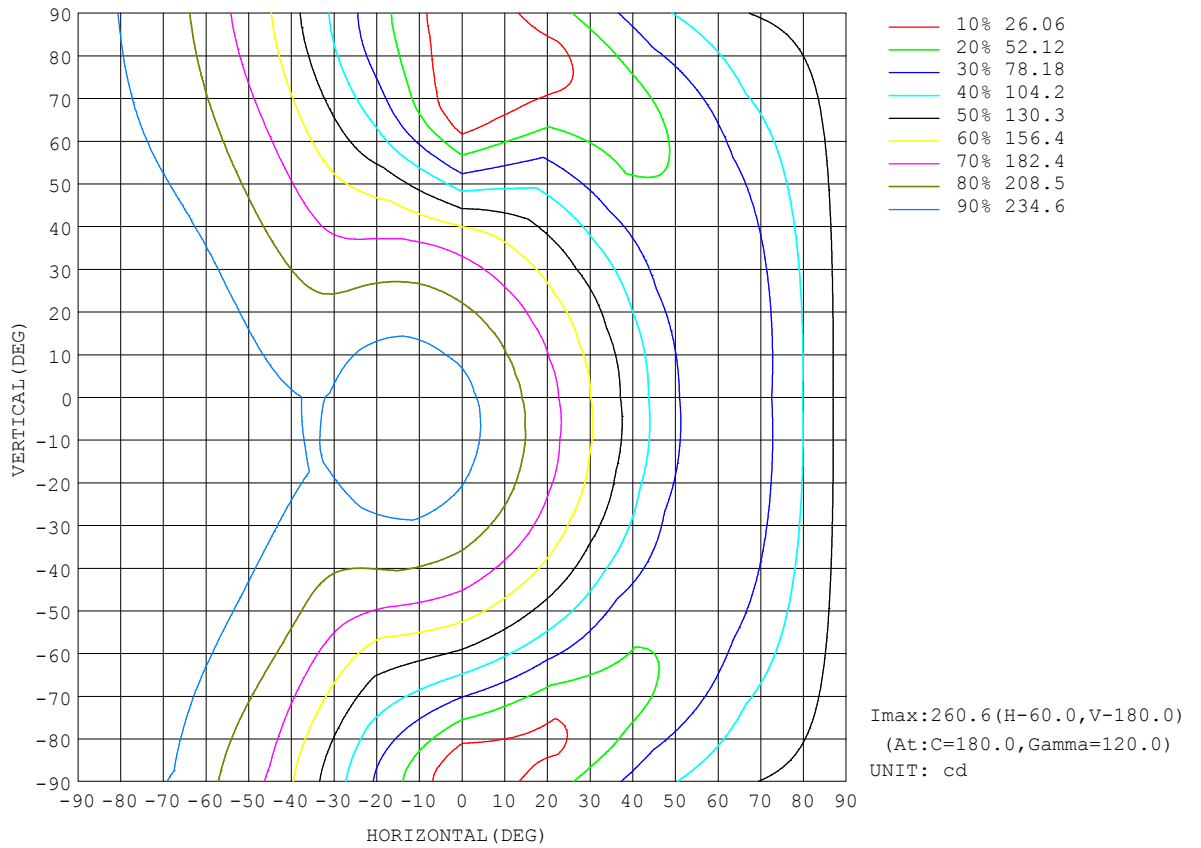
REFLECTANCE										
Ceiling	0.8	0.8	0.8	0.7	0.7	0.7	0.5	0.5	0.5	0
Walls	0.7	0.5	0.3	0.7	0.5	0.3	0.7	0.5	0.3	0
Working plane	0.2	0.2	0.2	0.2	0.2	0.2	0.2	0.2	0.2	0
ROOM INDEX	UTILIZATION FACTORS (PERCENT) $k(RI) \times RCR = 5$									
k = 0.60	39	27	21	37	26	20	33	24	18	11
0.80	48	35	28	45	33	26	39	30	24	14
1.00	55	42	34	51	40	32	44	37	29	17
1.25	62	49	41	57	46	38	49	40	34	20
1.50	67	55	46	62	51	43	53	44	38	22
2.00	74	63	55	69	59	51	58	50	44	25
2.50	79	69	60	73	64	56	61	54	49	27
3.00	83	73	66	76	68	61	64	58	52	29
4.00	88	79	73	80	73	67	67	62	57	32
5.00	91	84	77	83	77	72	69	65	61	34
ROOM INDEX	UF(total)									Direct
According to DIN EN 13032-2 2004			Suspended				SHRNOM = 1.25			

C Range: 0 - 360DEG
 C Interval: 22.5DEG
 Test Speed: HIGH
 Temperature:25.2°C
 Operators:Dano
 Test Date:2023-06-12

γ Range: 0 - 180DEG
 γ Interval: 1.0DEG
 Test System:EVERFINE GO-R5000_V2 SYSTEM V2.00.459
 Humidity:55.3%
 Test Distance:2.900m [K=0.8810]
 Remarks:

ISOCANDELA DIAGRAM

Test:U:119.9V I:0.3181A P:37.70W PF:0.9884 Freq:60.01Hz Lamp Flux:1991.1x1 lm		
NAME: PT07-44-40S-952C5-MVTD-BN 3500K	TYPE:	WEIGHT:
SPEC.:	DIM.:	SERIAL No.:
MFR.: FOSHAN LEDKEY LIGHTING CO.,LTD.	SUR.:	Shielding Angle:

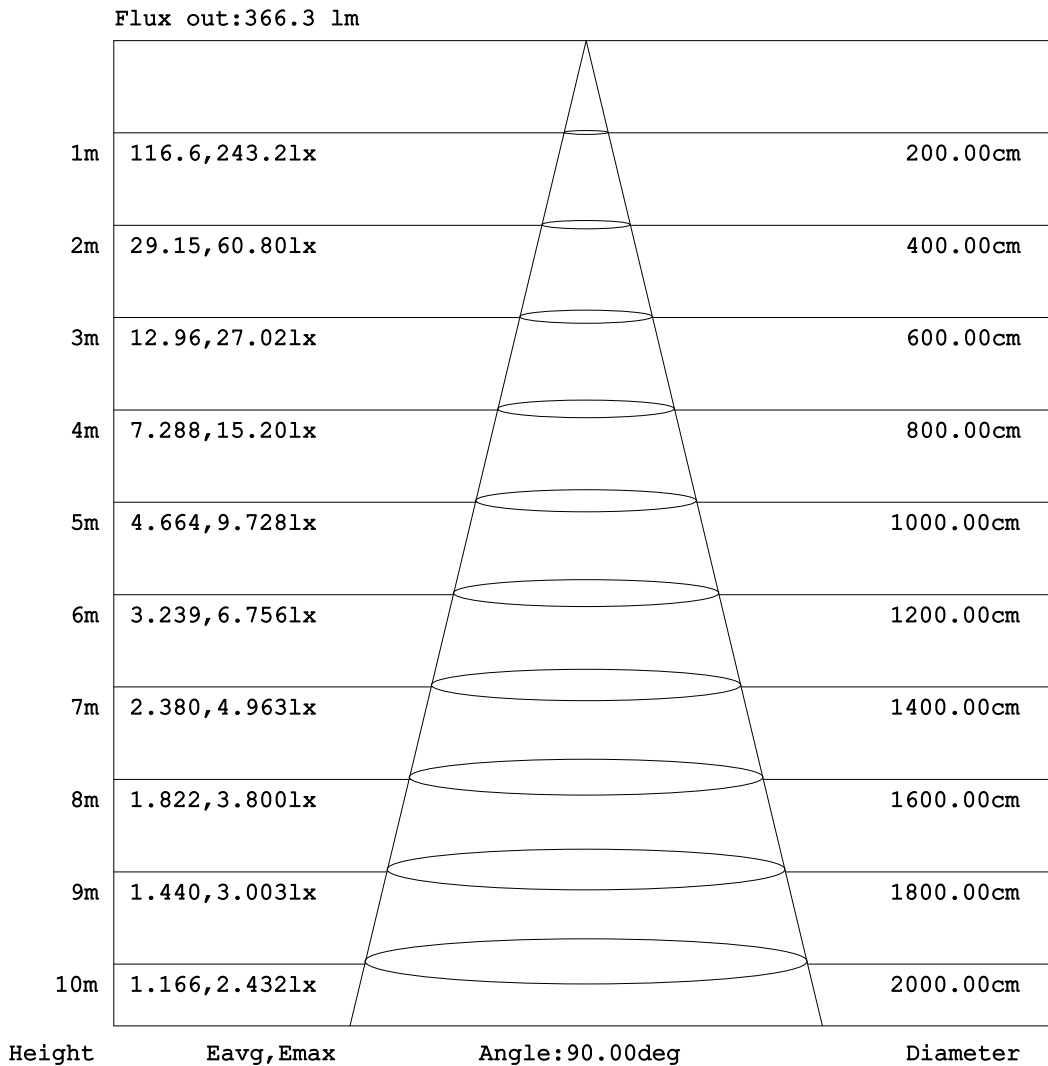


C Range: 0 - 360DEG
C Interval: 22.5DEG
Test Speed: HIGH
Temperature:25.2°C
Operators:Dano
Test Date:2023-06-12

γ Range: 0 - 180DEG
γ Interval: 1.0DEG
Test System:EVERFINE GO-R5000_V2 SYSTEM V2.00.459
Humidity:55.3%
Test Distance:2.900m [K=0.8810]
Remarks:

AAI Figure

Test:U:119.9V I:0.3181A P:37.70W PF:0.9884 Freq:60.01Hz Lamp Flux:1991.1x1 lm		
NAME: PT07-44-40S-952C5-MVTD-BN 3500K	TYPE:	WEIGHT:
SPEC.:	DIM.:	SERIAL No.:
MFR.: FOSHAN LEDKEY LIGHTING CO.,LTD.	SUR.:	Shielding Angle:



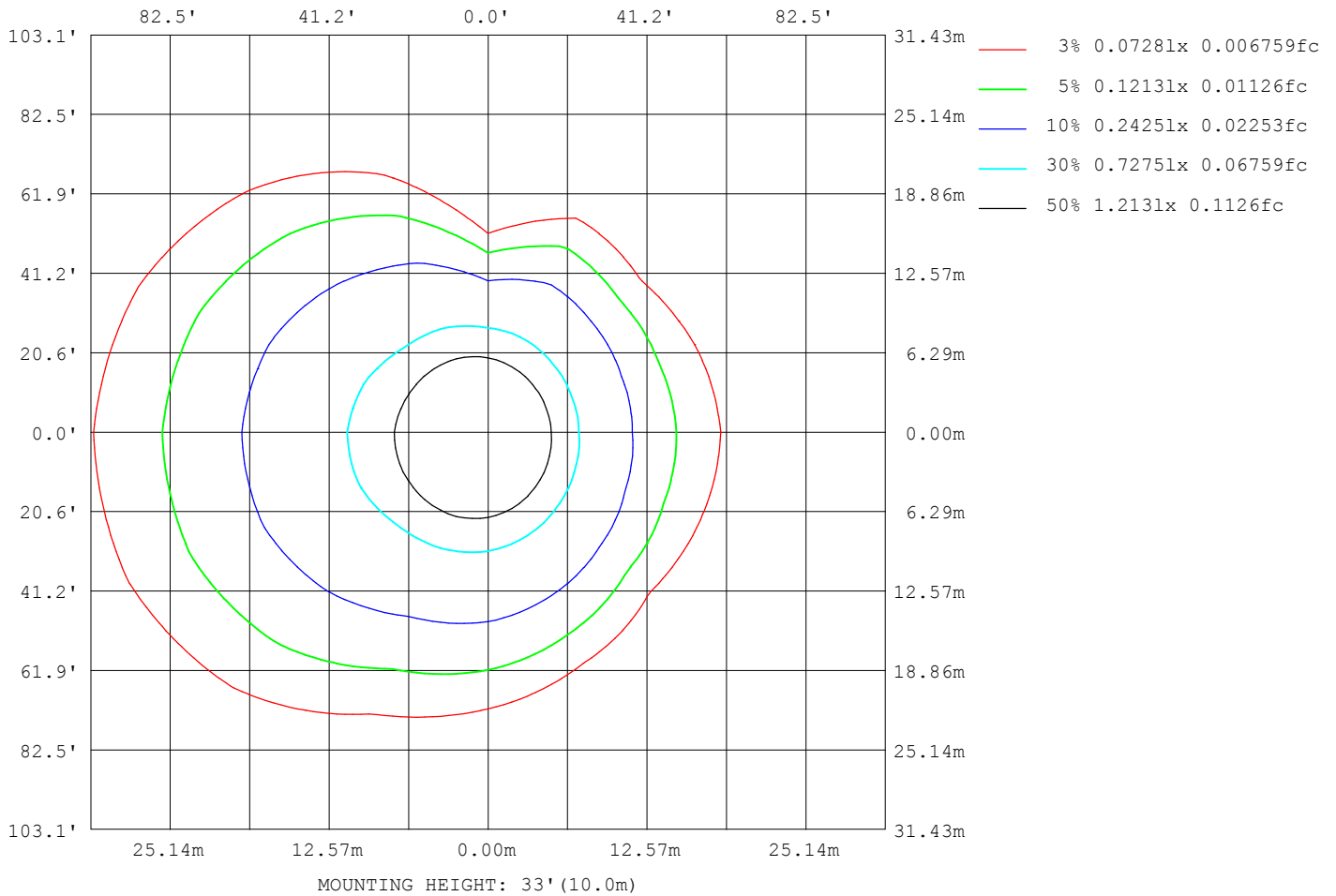
Note:The Curves indicate the illuminated area and the average illumination when the luminaire is at different distance.

C Range: 0 - 360DEG
 C Interval: 22.5DEG
 Test Speed: HIGH
 Temperature:25.2℃
 Operators:Dano
 Test Date:2023-06-12

γ Range: 0 - 180DEG
 γ Interval: 1.0DEG
 Test System:EVERFINE GO-R5000_V2 SYSTEM V2.00.459
 Humidity:55.3%
 Test Distance:2.900m [K=0.8810]
 Remarks:

ISOLUX DIAGRAM

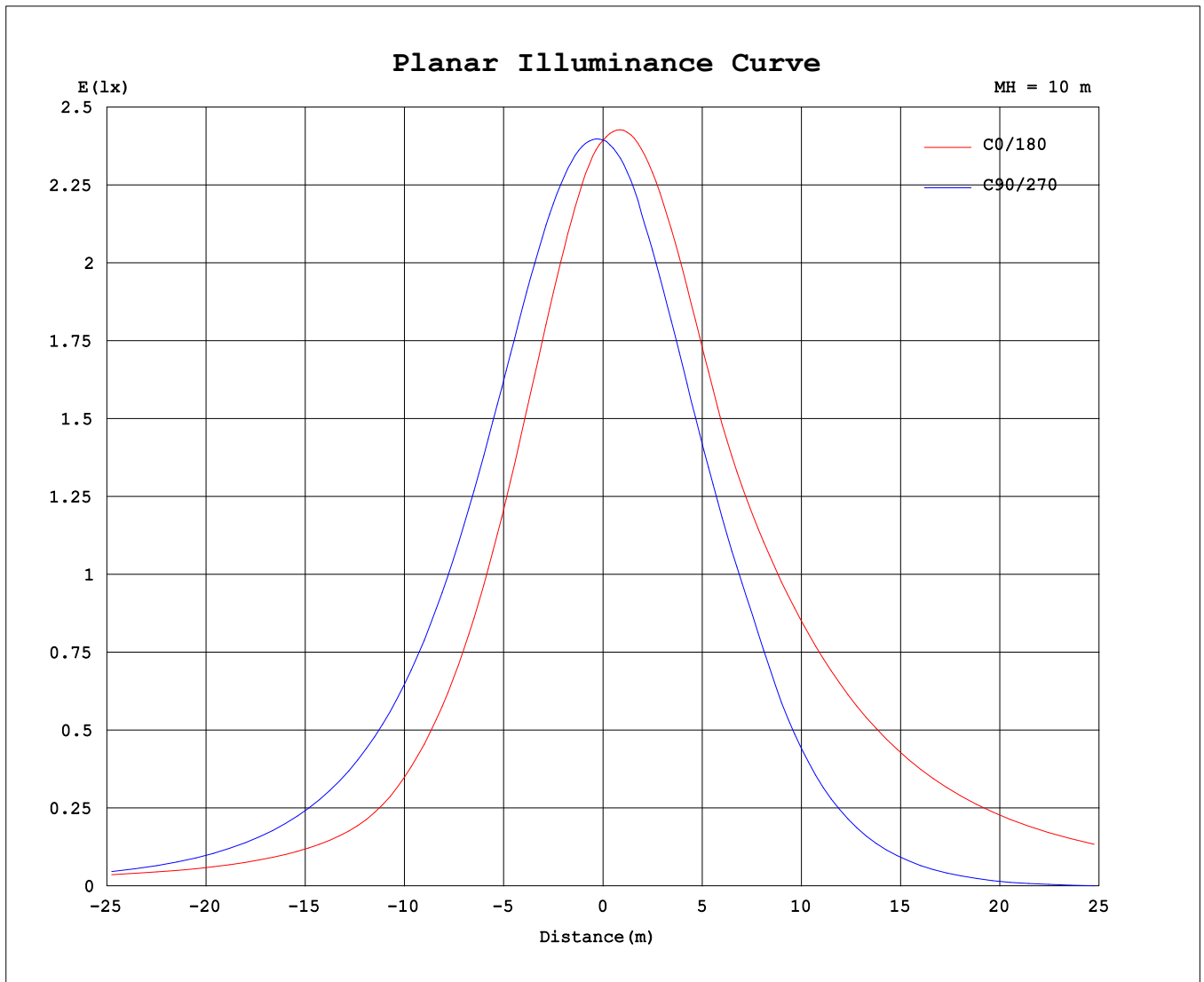
Test:U:119.9V I:0.3181A P:37.70W PF:0.9884 Freq:60.01Hz Lamp Flux:1991.1x1 lm		
NAME: PT07-44-40S-952C5-MVTD-BN 3500K	TYPE:	WEIGHT:
SPEC.:	DIM.:	SERIAL No.:
MFR.: FOSHAN LEDKEY LIGHTING CO.,LTD.	SUR.:	Shielding Angle:



C Range: 0 - 360DEG
 C Interval: 22.5DEG
 Test Speed: HIGH
 Temperature:25.2°C
 Operators:Dano
 Test Date:2023-06-12

γ Range: 0 - 180DEG
 γ Interval: 1.0DEG
 Test System:EVERFINE GO-R5000_V2 SYSTEM V2.00.459
 Humidity:55.3%
 Test Distance:2.900m [K=0.8810]
 Remarks:

Planar Illuminance Curve



C Range: 0 - 360DEG
C Interval: 22.5DEG
Test Speed: HIGH
Temperature: 25.2°C
Operators: Dano
Test Date: 2023-06-12

γ Range: 0 - 180DEG
γ Interval: 1.0DEG
Test System: EVERFINE GO-R5000_V2 SYSTEM V2.00.459
Humidity: 55.3%
Test Distance: 2.900m [K=0.8810]
Remarks:

LUMINOUS DISTRIBUTION INTENSITY DATA

Test:U:119.9V I:0.3181A P:37.70W PF:0.9884 Freq:60.01Hz Lamp Flux:1991.1x1 lm		
NAME: PT07-44-40S-952C5-MVTD-BN 3500K	TYPE:	WEIGHT:
SPEC.:	DIM.:	SERIAL No.:
MFR.: FOSHAN LEDKEY LIGHTING CO.,LTD.	SUR.:	Shielding Angle:

Table--1

UNIT: cd

C (DEG) γ (DEG)	0	22.5	45	67.5	90	112.5	135	157.5	180	202.5	225	247.5	270	292.5	315	337.5			
0	239	239	239	239	239	239	239	239	239	239	239	239	239	239	239	239			
5	231	233	236	238	241	244	246	246	246	244	241	239	236	234	232	231			
10	219	223	229	235	241	246	250	251	250	246	241	235	230	224	220	218			
15	206	211	220	230	239	247	252	253	251	245	239	230	222	214	208	205			
20	191	197	209	222	235	246	251	252	249	242	234	224	213	202	194	190			
25	175	182	196	213	229	242	248	248	244	236	227	215	202	189	179	174			
30	157	165	181	202	221	236	242	242	237	228	218	205	190	175	163	156			
35	138	147	165	188	211	227	234	235	234	221	207	194	177	160	146	138			
40	119	128	147	173	198	216	223	235	236	219	195	180	156	144	128	120			
45	99.0	108	128	155	183	203	216	238	241	221	186	166	125	127	110	100			
50	80.7	87.6	108	136	166	187	212	242	246	224	182	150	92.9	109	91.2	80.5			
55	71.3	73.2	86.2	116	147	169	210	245	250	226	179	134	61.8	90.5	71.9	67.7			
60	67.2	65.8	66.3	93.6	126	151	208	247	254	229	177	117	33.9	71.4	55.0	62.0			
65	67.5	63.2	54.6	70.5	104	136	206	249	256	230	175	105	11.6	52.4	47.1	61.1			
70	72.6	65.5	48.8	47.4	79.4	123	203	248	256	229	173	94.7	0.49	34.0	45.1	65.1			
75	86.1	75.0	49.5	28.9	54.6	111	198	246	255	228	169	85.9	0.47	21.6	49.2	76.0			
80	105	93.5	61.2	21.5	30.8	99.7	192	243	253	225	165	78.4	1.44	19.5	63.0	94.8			
85	123	112	78.9	28.4	11.0	90.3	185	239	250	222	161	73.0	1.79	29.2	80.9	113			
90	141	129	96.2	43.5	0.57	84.5	179	234	246	218	158	70.7	0.41	44.2	98.5	131			
95	158	146	113	59.4	6.09	87.2	176	230	243	216	156	75.4	2.66	59.5	115	148			
100	173	161	128	75.1	21.7	99.4	181	230	242	216	162	86.1	17.0	74.6	131	163			
105	188	176	143	90.0	41.4	110	191	237	248	224	171	95.8	35.8	90.3	146	178			
110	201	189	156	104	62.4	120	198	245	255	231	179	104	57.1	105	159	191			
115	212	200	168	116	84.6	129	204	249	259	236	184	113	78.1	115	171	202			
120	221	209	178	125	106	142	206	250	261	238	188	126	100	128	180	211			
125	228	216	186	135	127	156	207	249	259	237	189	140	122	138	188	218			
130	232	221	192	145	147	171	207	245	255	234	191	155	141	147	194	223			
135	233	223	192	157	165	182	212	238	247	229	198	167	159	158	189	225			
140	232	223	193	171	181	191	218	236	241	228	206	176	176	170	190	224			
145	228	220	189	181	193	205	224	236	239	231	215	191	179	178	191	219			
150	222	214	194	191	191	216	227	238	239	235	222	208	169	181	194	200			
155	216	212	201	184	185	222	226	238	240	238	225	221	163	168	191	204			
160	217	209	189	172	176	213	236	233	236	234	227	229	175	157	172	202			
165	218	210	175	164	164	183	238	241	238	238	236	226	164	150	162	172			
170	223	176	163	168	166	170	211	236	241	241	228	209	170	163	165	163			
175	206	137	177	181	182	177	184	188	186	193	192	184	176	179	178	176			
180	0.00	152	176	189	193	189	173	146	89.2	89.0	156	176	188	192	188	175			

C Range: 0 - 360DEG
 C Interval: 22.5DEG
 Test Speed: HIGH
 Temperature:25.2℃
 Operators:Dano
 Test Date:2023-06-12

γ Range: 0 - 180DEG
 γ Interval: 1.0DEG
 Test System:EVERFINE GO-R5000_V2 SYSTEM V2.00.459
 Humidity:55.3%
 Test Distance:2.900m [K=0.8810]
 Remarks: