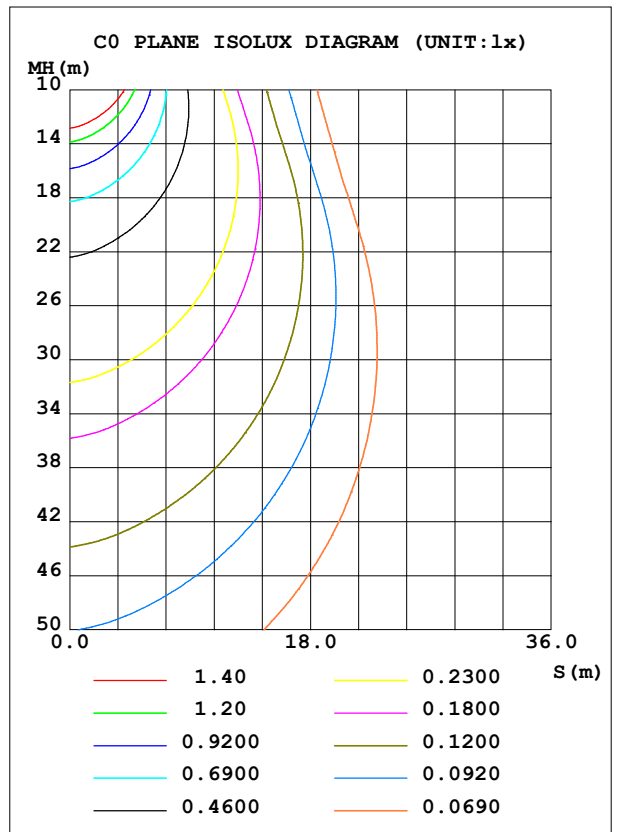
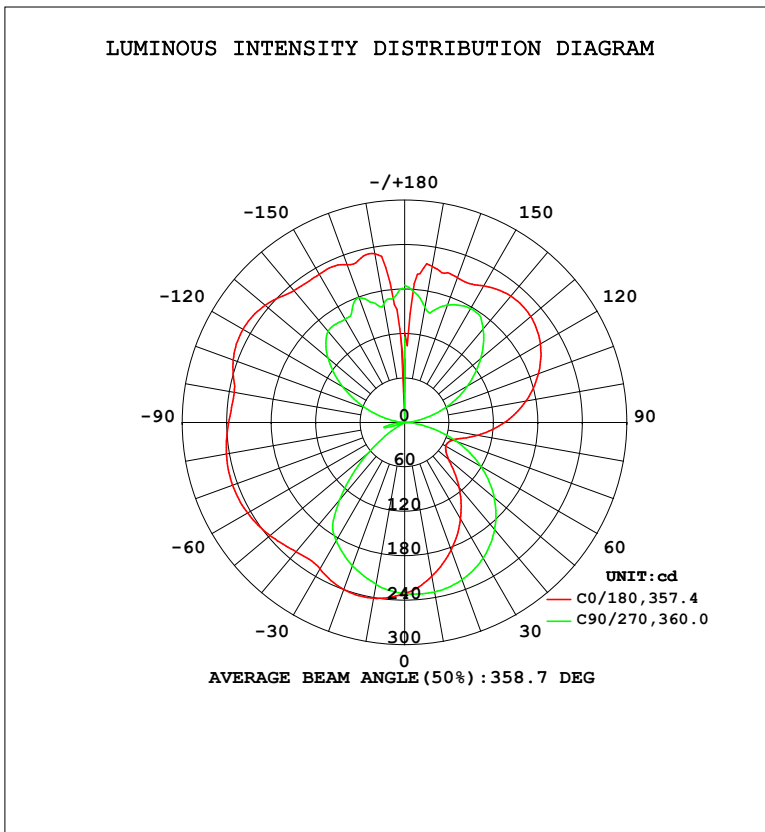


LUMINAIRE PHOTOMETRIC TEST REPORT

Test:U:119.9V I:0.3165A P:37.50W PF:0.9883 Freq:60.01Hz Lamp Flux:1912.83x1 lm		
NAME: PT07-44-40S-952C5-MVTD-BN 3000K	TYPE:	WEIGHT:
SPEC.:	DIM.:	SERIAL No.:
MFR.: FOSHAN LEDKEY LIGHTING CO.,LTD.	SUR.:	Shielding Angle:

DATA OF LAMP		PHOTOMETRIC DATA				Eff: 51.01 lm/W
MODEL		I _{max} (cd)	251.9	S/MH (C0/180)		1.51
NOMINAL POWER (W)		LOR (%)	100.0	S/MH (C90/270)		1.20
RATED VOLTAGE (V)	120	TOTAL FLUX (lm)	1912.8	η UP, DN (C0-180)		27.1, 22.7
NOMINAL FLUX (lm)	1912.83	CIE CLASS	DIFFUSE	η UP, DN (C180-360)		27.3, 22.9
LAMPS INSIDE	1	η up (%)	54.4	CIBSE SHR NOM		1.25
TEST VOLTAGE (V)	120	η down (%)	45.6	CIBSE SHR MAX		1.35



C Range: 0 - 360DEG
 C Interval: 22.5DEG
 Test Speed: HIGH
 Temperature: 25.2°C
 Operators: Dano
 Test Date: 2023-06-12

γ Range: 0 - 180DEG
 γ Interval: 1.0DEG
 Test System: EVERFINE GO-R5000_V2 SYSTEM V2.00.459
 Humidity: 55.3%
 Test Distance: 2.900m [K=0.8810]
 Remarks:

ZONAL FLUX DIAGRAM

ZONAL FLUX DIAGRAM:

γ	C0	C45	C90	C135	C180	C225	C270	C315	γ	Φ zone	Φ total	%lum,lamp
10	211.1	220.2	232.3	240.7	240.7	232.6	222.0	212.2	0- 10	21.83	21.83	1.14,1.14
20	183.5	200.0	226.0	241.9	240.0	225.9	205.9	187.4	10- 20	62.37	84.20	4.4,4.4
30	150.9	173.1	211.7	233.2	228.4	210.9	184.7	157.9	20- 30	94.33	178.5	9.33,9.33
40	114.5	140.1	188.8	214.5	228.0	189.1	137.0	124.8	30- 40	113.8	292.3	15.3,15.3
50	77.54	101.8	157.9	201.5	237.2	179.1	63.81	89.01	40- 50	120.2	412.5	21.6,21.6
60	64.36	63.17	119.2	195.9	244.7	175.8	5.425	53.34	50- 60	117.2	529.6	27.7,27.7
70	69.54	48.36	74.01	189.5	247.2	172.1	8.649	41.38	60- 70	112.2	641.9	33.6,33.6
80	100.4	61.98	27.77	178.8	244.3	165.5	21.14	56.86	70- 80	112.4	754.3	39.4,39.4
90	135.0	95.72	1.098	166.6	237.4	158.2	0.6971	90.76	80- 90	118.6	872.9	45.6,45.6
100	166.0	126.6	20.32	168.7	233.6	161.7	17.29	122.1	90-100	131.3	1004	52.5,52.5
110	192.2	153.5	58.68	185.7	246.2	177.7	54.81	149.0	100-110	150.1	1154	60.3,60.3
120	211.5	174.1	97.21	193.8	251.9	186.2	96.93	169.6	110-120	162.0	1316	68.8,68.8
130	222.3	187.0	134.1	196.4	245.8	188.2	135.0	182.7	120-130	160.9	1477	77.2,77.2
140	222.8	185.5	165.2	207.9	232.6	199.9	160.6	180.2	130-140	147.3	1624	84.9,84.9
150	213.0	185.7	177.8	216.8	230.8	215.2	161.2	185.7	140-150	124.3	1749	91.4,91.4
160	208.1	185.7	168.7	227.1	226.7	219.3	179.2	162.3	150-160	92.76	1842	96.3,96.3
170	214.0	154.6	158.8	201.0	231.0	220.0	162.9	158.5	160-170	54.39	1896	99.1,99.1
180	121.8	166.0	185.3	168.3	86.09	147.1	180.2	181.5	170-180	16.92	1913	100,100
DEG	LUMINOUS INTENSITY:cd									UNIT:lm		

Conical surface Flux(90deg): 352.29 lm

%lum = 18.4%

%lamp = 18.4%

Conical surface Flux(120deg): 529.64 lm

%lum = 27.7%

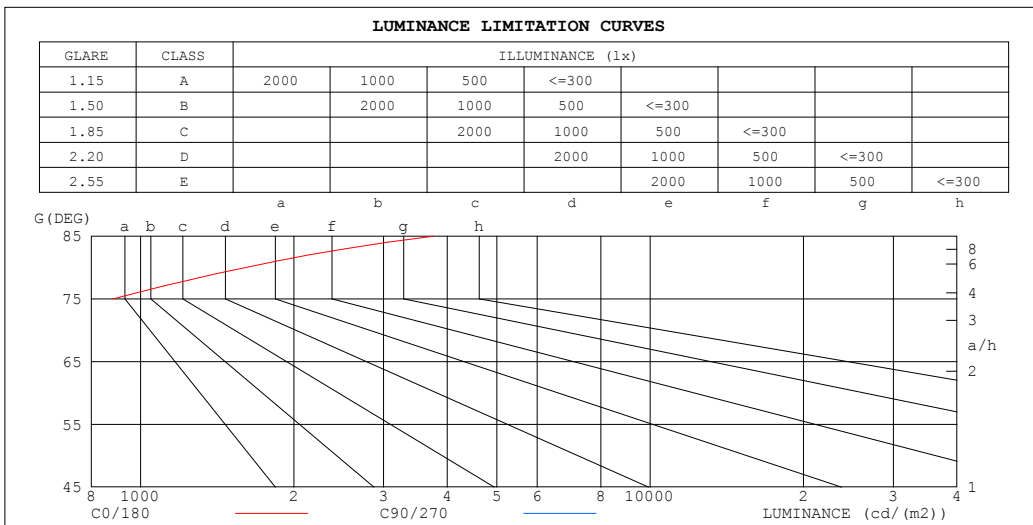
%lamp = 27.7%

C Range: 0 - 360DEG
C Interval: 22.5DEG
Test Speed: HIGH
Temperature:25.2℃
Operators:Dano
Test Date:2023-06-12

γ Range: 0 - 180DEG
 γ Interval: 1.0DEG
Test System:EVERFINE GO-R5000_V2 SYSTEM V2.00.459
Humidity:55.3%
Test Distance:2.900m [K=0.8810]
Remarks:

LUMINANCE LIMITATION CURVES

Test:U:119.9V I:0.3165A P:37.50W PF:0.9883 Freq:60.01Hz Lamp Flux:1912.83x1 lm		
NAME: PT07-44-40S-952C5-MVTD-BN 3000K	TYPE:	WEIGHT:
SPEC.:	DIM.:	SERIAL No.:
MFR.: FOSHAN LEDKEY LIGHTING CO.,LTD.	SUR.:	Shielding Angle:



LUMINANCE cd/(m2)		
G (DEG)	C0/180	C90/270
85	3763	288
80	1607	444
75	883	539
70	565	601
65	425	639
60	358	662
55	331	675
50	335	682
45	374	685

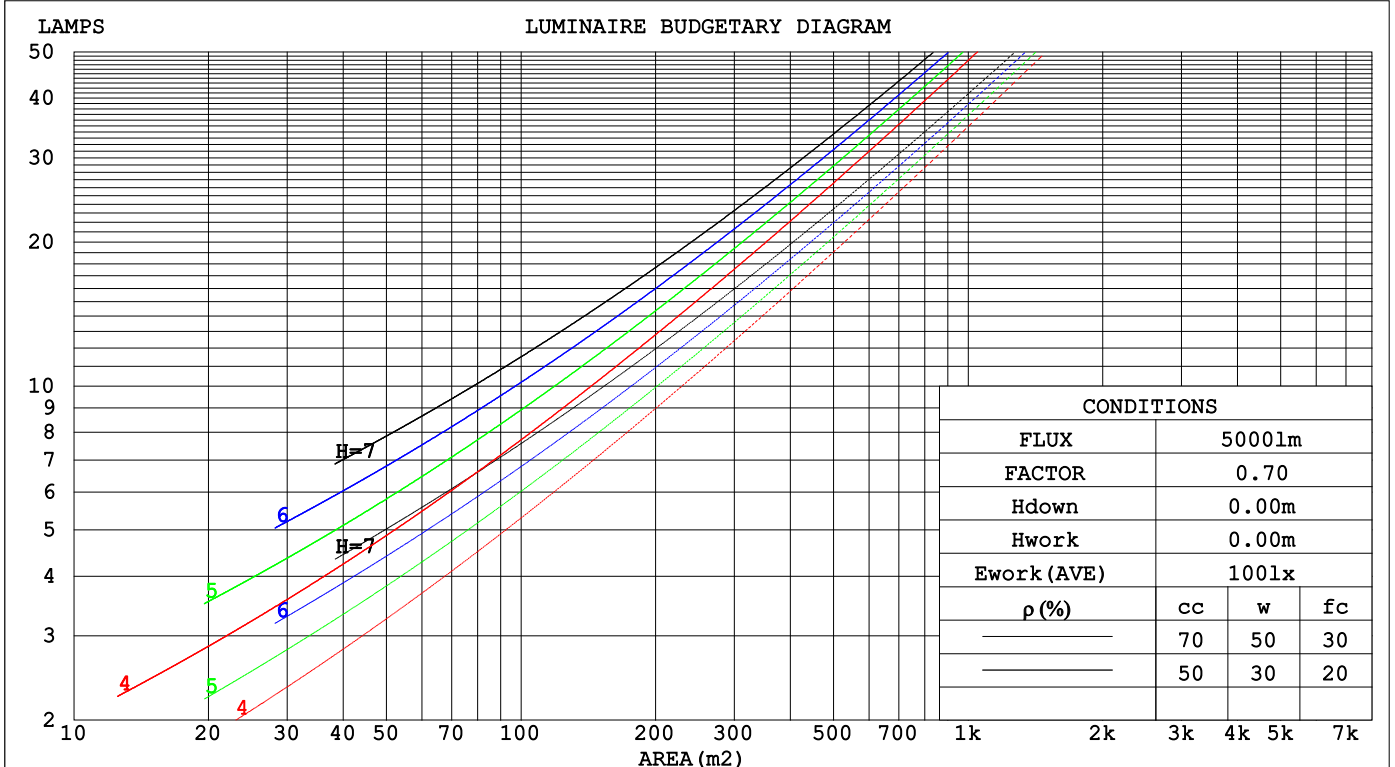
C Range: 0 - 360DEG
 C Interval: 22.5DEG
 Test Speed: HIGH
 Temperature:25.2℃
 Operators:Dano
 Test Date:2023-06-12

γ Range: 0 - 180DEG
 γ Interval: 1.0DEG
 Test System:EVERFINE GO-R5000_V2 SYSTEM V2.00.459
 Humidity:55.3%
 Test Distance:2.900m [K=0.8810]
 Remarks:

CU AND LUMINAIRE BUDGETARY ESTIMATE DIAGRAM

Test:U:119.9V I:0.3165A P:37.50W PF:0.9883 Freq:60.01Hz Lamp Flux:1912.83x1 lm		
NAME: PT07-44-40S-952C5-MVTD-BN 3000K	TYPE:	WEIGHT:
SPEC.:	DIM.:	SERIAL No.:
MFR.: FOSHAN LEDKEY LIGHTING CO.,LTD.	SUR.:	Shielding Angle:

ρcc	80%			70%			50%			30%			10%			0
ρw	50%	30%	10%	50%	30%	10%	50%	30%	10%	50%	30%	10%	50%	30%	10%	0
ρfc	20%			20%			20%			20%			20%			0
RCR	RCR:Room Cavity Ratio						Coefficients of Utilization(CU)									
0.0	1.06	1.06	1.06	.97	.97	.97	.81	.81	.81	.66	.66	.66	.52	.52	.52	.46
1.0	.89	.84	.79	.81	.77	.73	.67	.64	.61	.54	.52	.49	.42	.40	.39	.33
2.0	.76	.69	.63	.70	.64	.58	.57	.53	.49	.46	.43	.40	.36	.33	.31	.26
3.0	.66	.58	.52	.61	.54	.48	.50	.45	.40	.40	.36	.33	.31	.28	.26	.21
4.0	.58	.50	.43	.53	.46	.40	.44	.38	.34	.36	.31	.28	.27	.24	.22	.18
5.0	.52	.43	.37	.48	.40	.34	.39	.33	.29	.32	.27	.24	.25	.21	.19	.15
6.0	.46	.38	.32	.43	.35	.29	.35	.29	.25	.29	.24	.21	.22	.19	.16	.13
7.0	.42	.33	.28	.38	.31	.26	.32	.26	.22	.26	.21	.18	.20	.17	.14	.12
8.0	.38	.30	.24	.35	.28	.23	.29	.23	.19	.24	.19	.16	.19	.15	.13	.10
9.0	.34	.27	.21	.32	.25	.20	.27	.21	.17	.22	.17	.14	.17	.14	.11	.09
10.0	.32	.24	.19	.29	.22	.18	.24	.19	.15	.20	.16	.13	.16	.13	.10	.08



C Range: 0 - 360DEG
 C Interval: 22.5DEG
 Test Speed: HIGH
 Temperature:25.2°C
 Operators:Dano
 Test Date:2023-06-12

γ Range: 0 - 180DEG
 γ Interval: 1.0DEG
 Test System:EVERFINE GO-R5000_V2 SYSTEM V2.00.459
 Humidity:55.3%
 Test Distance:2.900m [K=0.8810]
 Remarks:

WEC AND CCEC

Test:U:119.9V I:0.3165A P:37.50W PF:0.9883 Freq:60.01Hz Lamp Flux:1912.83x1 lm		
NAME: PT07-44-40S-952C5-MVTD-BN 3000K	TYPE:	WEIGHT:
SPEC.:	DIM.:	SERIAL No.:
MFR.: FOSHAN LEDKEY LIGHTING CO.,LTD.	SUR.:	Shielding Angle:

ρcc	80%			70%			50%			30%			10%			0
ρw	50%	30%	10%	50%	30%	10%	50%	30%	10%	50%	30%	10%	50%	30%	10%	0
ρfc	20%			20%			20%			20%			20%			0
RCR	RCR:Room Cavity Ratio						Wall Exitance Coefficients(WEC)									
0.0																
1.0	.351	.199	.063	.327	.187	.059	.283	.162	.052	.242	.140	.045	.205	.119	.038	
2.0	.302	.165	.051	.280	.154	.048	.240	.133	.041	.203	.114	.036	.168	.095	.030	
3.0	.268	.143	.043	.249	.133	.040	.212	.115	.035	.178	.097	.030	.146	.081	.025	
4.0	.242	.126	.037	.224	.117	.035	.190	.101	.030	.159	.085	.026	.130	.070	.021	
5.0	.221	.113	.033	.205	.105	.031	.173	.090	.027	.144	.076	.023	.117	.063	.019	
6.0	.203	.102	.029	.188	.095	.027	.159	.082	.024	.132	.069	.020	.107	.056	.017	
7.0	.188	.093	.026	.174	.087	.025	.147	.074	.021	.122	.063	.018	.099	.051	.015	
8.0	.175	.085	.024	.162	.080	.023	.137	.068	.020	.113	.057	.017	.091	.047	.014	
9.0	.163	.079	.022	.151	.074	.021	.128	.063	.018	.106	.053	.015	.085	.043	.013	
10.0	.153	.073	.020	.142	.068	.019	.120	.059	.017	.099	.049	.014	.080	.040	.012	

ρcc	80%			70%			50%			30%			10%			0
ρw	50%	30%	10%	50%	30%	10%	50%	30%	10%	50%	30%	10%	50%	30%	10%	0
ρfc	20%			20%			20%			20%			20%			0
RCR	RCR:Room Cavity Ratio						Ceiling Cavity Exitance Coefficients(CCEC)									
0.0	.605	.605	.605	.517	.517	.517	.353	.353	.353	.203	.203	.203	.065	.065	.065	
1.0	.601	.573	.549	.514	.492	.472	.352	.339	.327	.202	.196	.190	.065	.063	.061	
2.0	.594	.552	.517	.509	.475	.447	.349	.329	.312	.201	.191	.183	.065	.062	.060	
3.0	.587	.537	.497	.503	.463	.431	.345	.322	.302	.199	.188	.178	.064	.061	.058	
4.0	.580	.525	.484	.497	.454	.420	.342	.316	.296	.198	.185	.175	.064	.060	.058	
5.0	.573	.516	.475	.492	.447	.413	.339	.312	.292	.196	.183	.173	.063	.060	.057	
6.0	.566	.509	.468	.487	.441	.408	.336	.309	.288	.195	.181	.171	.063	.059	.057	
7.0	.560	.503	.463	.481	.436	.404	.333	.306	.286	.193	.180	.170	.062	.059	.056	
8.0	.554	.498	.459	.477	.432	.401	.330	.303	.284	.192	.179	.169	.062	.059	.056	
9.0	.548	.493	.456	.472	.428	.398	.327	.301	.283	.191	.178	.169	.062	.058	.056	
10.0	.543	.490	.454	.468	.425	.396	.325	.299	.282	.189	.177	.168	.061	.058	.056	

C Range: 0 - 360DEG
 C Interval: 22.5DEG
 Test Speed: HIGH
 Temperature:25.2℃
 Operators:Dano
 Test Date:2023-06-12

γ Range: 0 - 180DEG
 γ Interval: 1.0DEG
 Test System:EVERFINE GO-R5000_V2 SYSTEM V2.00.459
 Humidity:55.3%
 Test Distance:2.900m [K=0.8810]
 Remarks:

UGR(Unified Glare Rating) Table

Test:U:119.9V I:0.3165A P:37.50W PF:0.9883 Freq:60.01Hz										
Lamp Flux:1912.83x1 lm										
NAME: PT07-44-40S-952C5-MVTD-BN 3000K					TYPE:			WEIGHT:		
SPEC.:					DIM.:			SERIAL No.:		
MFR.: FOSHAN LEDKEY LIGHTING CO.,LTD.					SUR.:			Shielding Angle:		
ceiling/cavity	0.7	0.7	0.5	0.5	0.3	0.7	0.7	0.5	0.5	0.3
walls	0.5	0.3	0.5	0.3	0.3	0.5	0.3	0.5	0.3	0.3
working plane	0.2	0.2	0.2	0.2	0.2	0.2	0.2	0.2	0.2	0.2
Room dimensions	Viewed crosswise					Viewed endwise				
x = 2H y = 2H	-0.7	1.1	1.2	3.1	5.6	4.9	6.7	6.7	8.6	11.1
3H	2.5	4.2	4.4	6.1	8.7	6.4	8.1	8.3	10.0	12.6
4H	4.8	6.3	6.7	8.3	10.9	6.9	8.5	8.8	10.5	13.1
6H	7.7	9.2	9.7	11.2	13.8	7.2	8.7	9.2	10.7	13.3
8H	9.4	10.8	11.4	12.8	15.4	7.2	8.7	9.2	10.7	13.3
12H	11.2	12.6	13.2	14.6	17.3	7.2	8.6	9.2	10.6	13.3
4H 2H	-0.6	1.0	1.3	3.0	5.6	6.1	7.7	8.0	9.7	12.3
3H	2.9	4.3	4.9	6.3	8.9	8.0	9.3	10.0	11.4	14.0
4H	5.4	6.7	7.4	8.7	11.4	8.7	10.0	10.7	12.0	14.7
6H	8.7	9.8	10.7	11.8	14.6	9.2	10.3	11.3	12.4	15.1
8H	10.5	11.5	12.5	13.6	16.3	9.4	10.4	11.4	12.5	15.2
12H	12.4	13.4	14.5	15.5	18.3	9.4	10.4	11.5	12.4	15.2
8H 4H	5.6	6.6	7.6	8.7	11.5	10.4	11.4	12.4	13.5	16.2
6H	9.2	10.1	11.3	12.3	15.0	11.4	12.3	13.5	14.4	17.2
8H	11.3	12.1	13.4	14.2	17.0	11.8	12.6	13.9	14.7	17.5
12H	13.6	14.3	15.7	16.4	19.3	12.0	12.7	14.2	14.9	17.7
12H 4H	5.5	6.5	7.6	8.6	11.4	10.9	11.9	13.0	14.0	16.7
6H	9.3	10.1	11.4	12.2	15.1	12.3	13.1	14.4	15.2	18.0
8H	11.5	12.2	13.7	14.4	17.2	13.0	13.7	15.1	15.8	18.6
CIE190: 2010										

CIE190: 2010
Area: 0.36 m2

C Range: 0 - 360DEG
C Interval: 22.5DEG
Test Speed: HIGH
Temperature:25.2℃
Operators:Dano
Test Date:2023-06-12

γ Range: 0 - 180DEG
γ Interval: 1.0DEG
Test System:EVERFINE GO-R5000_V2 SYSTEM V2.00.459
Humidity:55.3%
Test Distance:2.900m [K=0.8810]
Remarks:

UTILIZATION FACTORS TABLE

Test:U:119.9V I:0.3165A P:37.50W PF:0.9883 Freq:60.01Hz Lamp Flux:1912.83x1 lm		
NAME: PT07-44-40S-952C5-MVTD-BN 3000K	TYPE:	WEIGHT:
SPEC.:	DIM.:	SERIAL No.:
MFR.: FOSHAN LEDKEY LIGHTING CO.,LTD.	SUR.:	Shielding Angle:

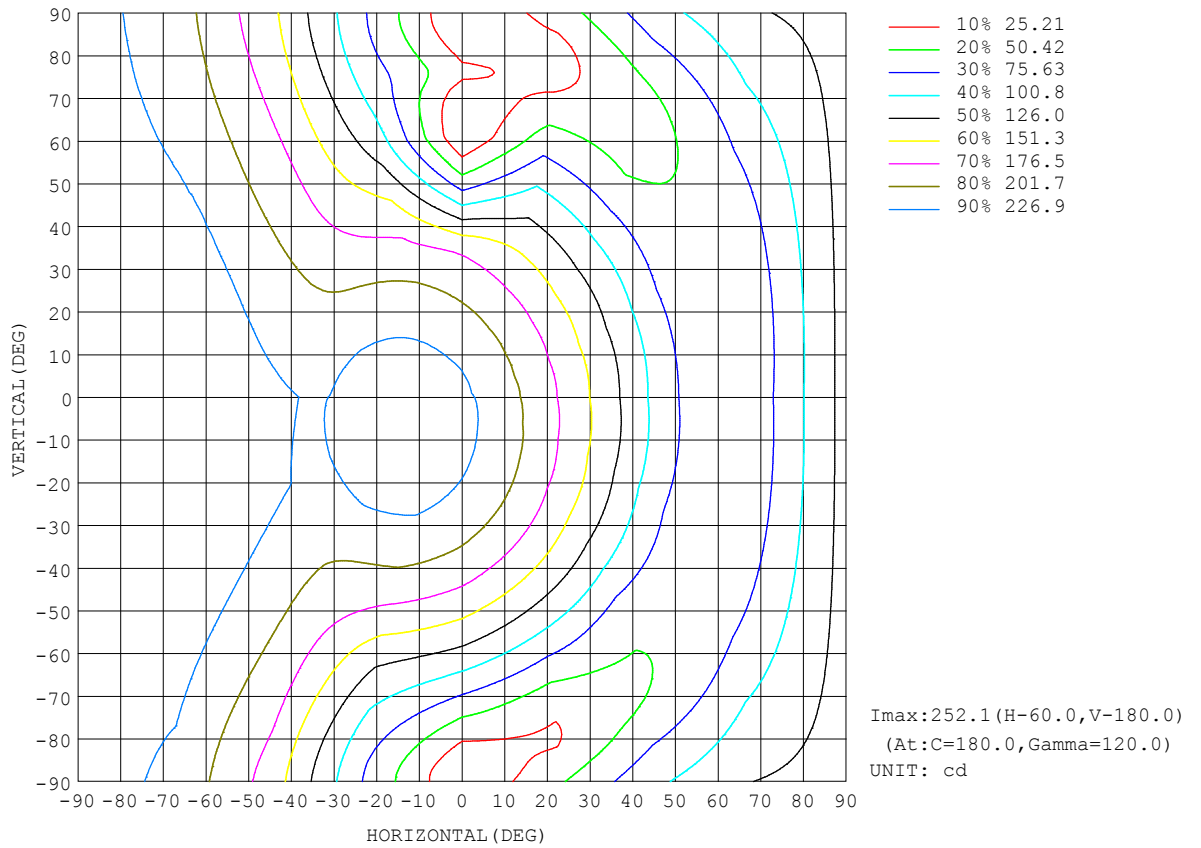
REFLECTANCE										
Ceiling	0.8	0.8	0.8	0.7	0.7	0.7	0.5	0.5	0.5	0
Walls	0.7	0.5	0.3	0.7	0.5	0.3	0.7	0.5	0.3	0
Working plane	0.2	0.2	0.2	0.2	0.2	0.2	0.2	0.2	0.2	0
ROOM INDEX	UTILIZATION FACTORS (PERCENT) $k(RI) \times RCR = 5$									
k = 0.60	39	27	21	37	26	20	33	24	18	11
0.80	48	35	28	45	33	26	39	30	24	14
1.00	55	42	34	51	40	32	44	37	29	17
1.25	62	49	41	57	46	38	49	40	34	20
1.50	67	55	46	62	51	43	53	44	38	22
2.00	74	63	55	69	59	51	58	50	44	25
2.50	79	69	60	73	64	56	61	54	49	27
3.00	83	73	66	76	68	61	64	57	52	29
4.00	88	79	73	80	73	67	67	62	57	32
5.00	91	84	77	83	77	72	69	65	61	34
ROOM INDEX	UF(total)									Direct
According to DIN EN 13032-2 2004			Suspended				SHRNOM = 1.25			

C Range: 0 - 360DEG
 C Interval: 22.5DEG
 Test Speed: HIGH
 Temperature:25.2°C
 Operators:Dano
 Test Date:2023-06-12

γ Range: 0 - 180DEG
 γ Interval: 1.0DEG
 Test System:EVERFINE GO-R5000_V2 SYSTEM V2.00.459
 Humidity:55.3%
 Test Distance:2.900m [K=0.8810]
 Remarks:

ISOCANDELA DIAGRAM

Test:U:119.9V I:0.3165A P:37.50W PF:0.9883 Freq:60.01Hz Lamp Flux:1912.83x1 lm		
NAME: PT07-44-40S-952C5-MVTD-BN 3000K	TYPE:	WEIGHT:
SPEC.:	DIM.:	SERIAL No.:
MFR.: FOSHAN LEDKEY LIGHTING CO.,LTD.	SUR.:	Shielding Angle:



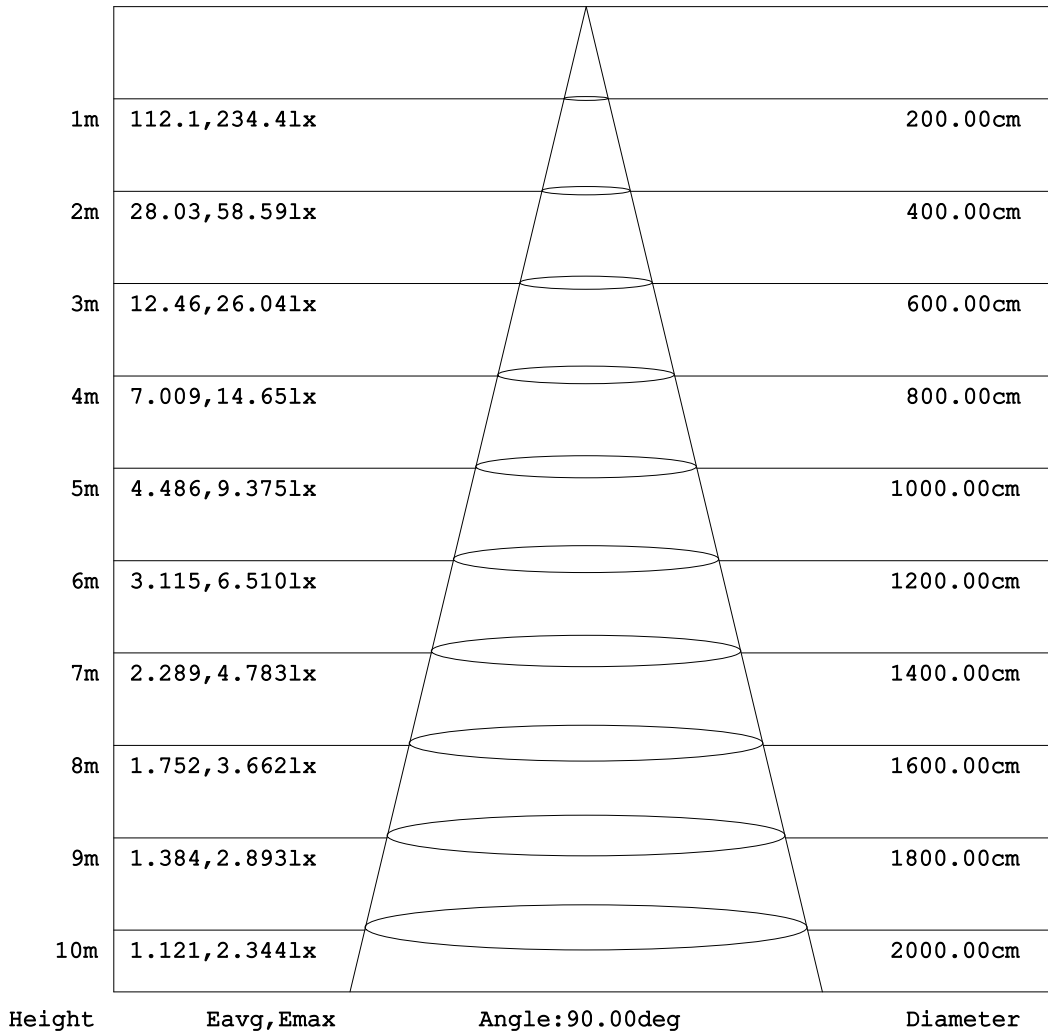
C Range: 0 - 360DEG
C Interval: 22.5DEG
Test Speed: HIGH
Temperature:25.2°C
Operators:Dano
Test Date:2023-06-12

γ Range: 0 - 180DEG
γ Interval: 1.0DEG
Test System:EVERFINE GO-R5000_V2 SYSTEM V2.00.459
Humidity:55.3%
Test Distance:2.900m [K=0.8810]
Remarks:

AAI Figure

Test:U:119.9V I:0.3165A P:37.50W PF:0.9883 Freq:60.01Hz Lamp Flux:1912.83x1 lm		
NAME: PT07-44-40S-952C5-MVTD-BN 3000K	TYPE:	WEIGHT:
SPEC.:	DIM.:	SERIAL No.:
MFR.: FOSHAN LEDKEY LIGHTING CO.,LTD.	SUR.:	Shielding Angle:

Flux out:352.3 lm



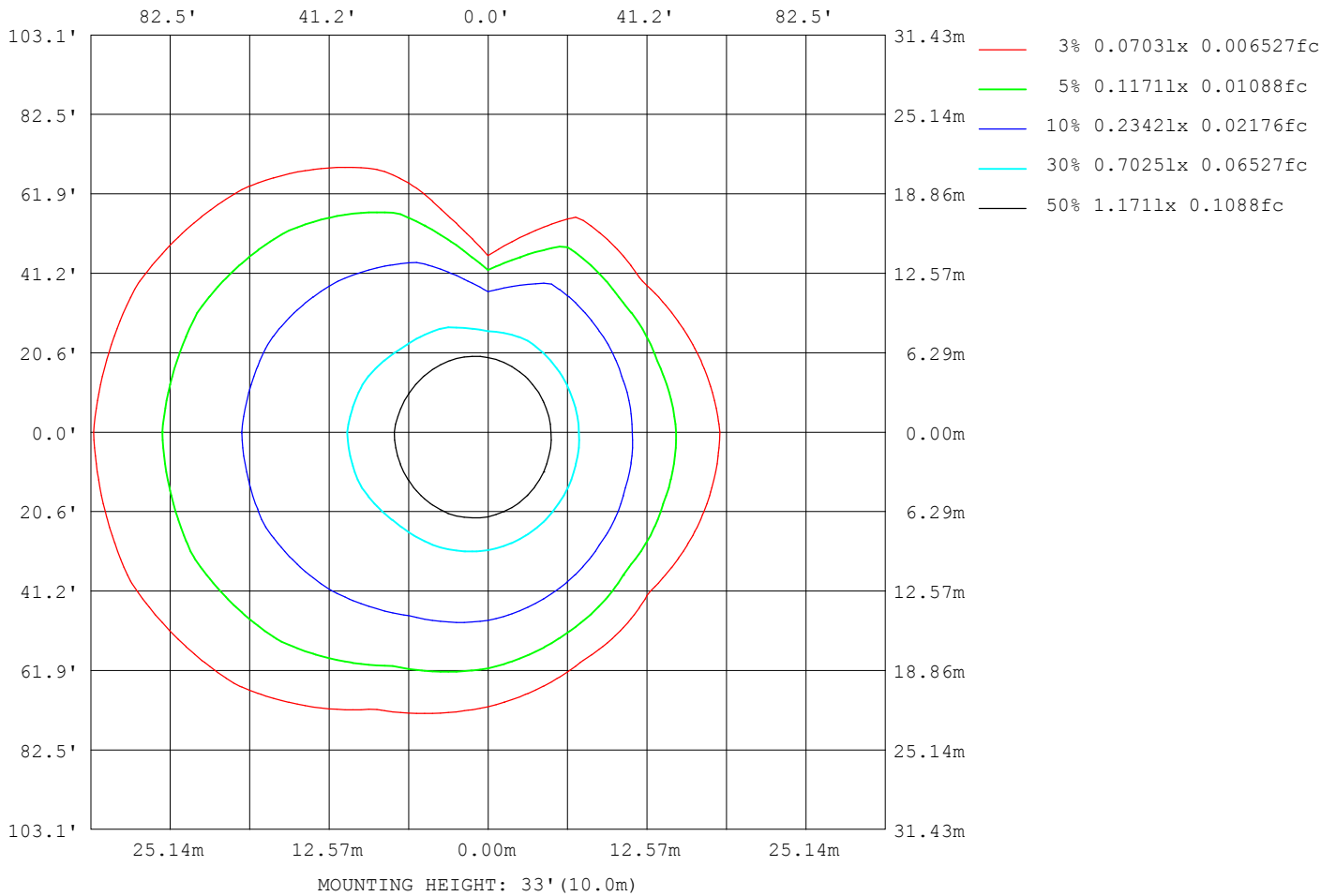
Note:The Curves indicate the illuminated area and the average illumination when the luminaire is at different distance.

C Range: 0 - 360DEG
 C Interval: 22.5DEG
 Test Speed: HIGH
 Temperature:25.2℃
 Operators:Dano
 Test Date:2023-06-12

γ Range: 0 - 180DEG
 γ Interval: 1.0DEG
 Test System:EVERFINE GO-R5000_V2 SYSTEM V2.00.459
 Humidity:55.3%
 Test Distance:2.900m [K=0.8810]
 Remarks:

ISOLUX DIAGRAM

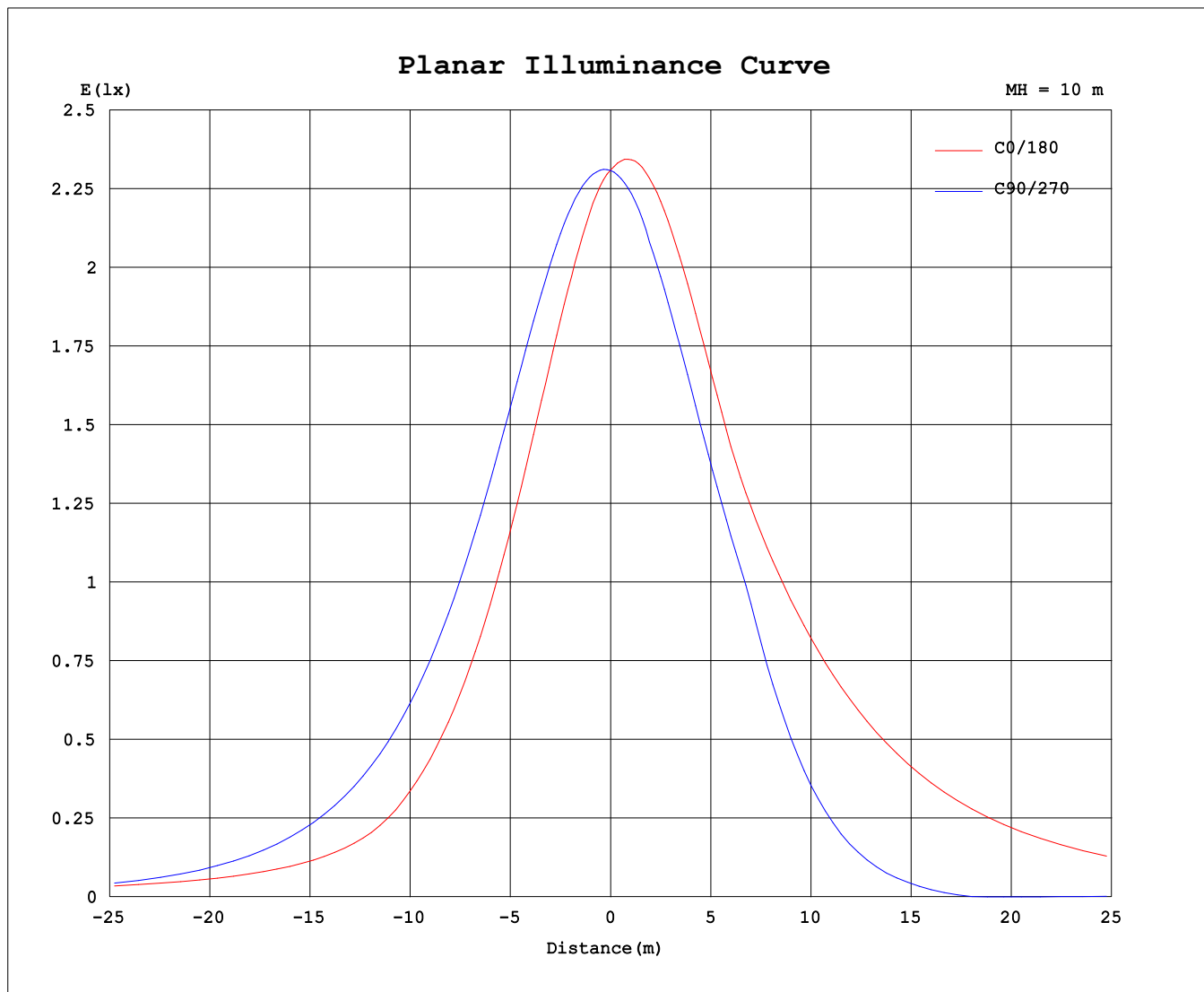
Test:U:119.9V I:0.3165A P:37.50W PF:0.9883 Freq:60.01Hz Lamp Flux:1912.83x1 lm		
NAME: PT07-44-40S-952C5-MVTD-BN 3000K	TYPE:	WEIGHT:
SPEC.:	DIM.:	SERIAL No.:
MFR.: FOSHAN LEDKEY LIGHTING CO.,LTD.	SUR.:	Shielding Angle:



C Range: 0 - 360DEG
 C Interval: 22.5DEG
 Test Speed: HIGH
 Temperature:25.2°C
 Operators:Dano
 Test Date:2023-06-12

γ Range: 0 - 180DEG
 γ Interval: 1.0DEG
 Test System:EVERFINE GO-R5000_V2 SYSTEM V2.00.459
 Humidity:55.3%
 Test Distance:2.900m [K=0.8810]
 Remarks:

Planar Illuminance Curve



C Range: 0 - 360DEG
C Interval: 22.5DEG
Test Speed: HIGH
Temperature: 25.2°C
Operators: Dano
Test Date: 2023-06-12

γ Range: 0 - 180DEG
γ Interval: 1.0DEG
Test System: EVERFINE GO-R5000_V2 SYSTEM V2.00.459
Humidity: 55.3%
Test Distance: 2.900m [K=0.8810]
Remarks:

LUMINOUS DISTRIBUTION INTENSITY DATA

Test:U:119.9V I:0.3165A P:37.50W PF:0.9883 Freq:60.01Hz Lamp Flux:1912.83x1 lm		
NAME: PT07-44-40S-952C5-MVTD-BN 3000K	TYPE:	WEIGHT:
SPEC.:	DIM.:	SERIAL No.:
MFR.: FOSHAN LEDKEY LIGHTING CO.,LTD.	SUR.:	Shielding Angle:

Table--1

UNIT: cd

C (DEG) γ (DEG)	0	22.5	45	67.5	90	112.5	135	157.5	180	202.5	225	247.5	270	292.5	315	337.5			
0	231	231	231	231	231	231	231	231	231	231	231	231	231	231	231	231			
5	223	224	227	229	232	235	237	237	237	235	233	230	228	225	223	222			
10	211	214	220	226	232	237	241	242	241	237	233	227	222	216	212	210			
15	198	202	211	221	230	238	242	244	242	237	230	223	214	206	200	197			
20	183	189	200	213	226	236	242	243	240	234	226	216	206	195	187	183			
25	168	174	187	204	220	233	239	239	236	228	219	208	196	183	173	168			
30	151	158	173	193	212	226	233	233	228	221	211	199	185	170	158	151			
35	133	141	157	179	201	218	225	226	225	214	201	188	169	155	142	134			
40	114	123	140	164	189	207	215	226	228	213	189	175	137	140	125	116			
45	95.1	103	122	147	174	194	206	228	232	215	183	161	100	124	107	97.0			
50	77.5	83.5	102	129	158	179	201	231	237	218	179	146	63.8	107	89.0	78.0			
55	68.4	70.3	81.2	109	140	162	198	234	242	221	177	130	32.2	88.9	70.5	64.9			
60	64.4	63.6	63.2	87.5	119	143	196	236	245	223	176	117	5.43	70.6	53.3	58.9			
65	64.6	61.4	53.0	65.3	97.2	126	193	237	247	224	174	106	1.00	52.2	44.2	57.7			
70	69.5	63.9	48.4	43.3	74.0	112	189	237	247	225	172	97.7	8.65	34.4	41.4	61.2			
75	82.3	73.4	49.8	28.3	50.3	98.9	185	235	246	223	169	90.0	27.1	20.1	44.5	71.2			
80	100	91.3	62.0	23.0	27.8	87.3	179	232	244	221	166	83.4	21.1	15.9	56.9	89.1			
85	118	109	79.1	31.6	9.03	77.8	172	227	241	218	162	78.4	6.95	23.4	74.0	107			
90	135	125	95.7	46.6	1.10	72.1	167	223	237	214	158	76.1	0.70	37.1	90.8	124			
95	151	142	112	62.0	7.63	75.8	164	219	234	212	157	79.9	4.83	51.3	107	140			
100	166	157	127	77.0	20.3	87.5	169	219	234	212	162	90.2	17.3	65.5	122	155			
105	180	170	141	91.4	38.6	98.1	178	226	239	219	171	99.4	35.4	80.7	136	169			
110	192	183	153	105	58.7	107	186	233	246	226	178	108	54.8	95.6	149	181			
115	203	194	165	117	78.7	118	191	238	251	231	183	115	75.5	107	160	192			
120	212	203	174	125	97.2	132	194	239	252	232	186	126	96.9	118	170	201			
125	218	209	182	135	116	147	194	238	250	232	187	138	117	128	177	208			
130	222	214	187	142	134	161	196	234	246	228	188	152	135	138	183	212			
135	224	216	190	153	151	172	202	228	239	223	193	164	150	150	175	214			
140	223	215	186	164	165	183	208	226	233	221	200	173	161	161	180	213			
145	219	212	186	175	177	196	215	227	230	223	208	184	162	172	181	209			
150	213	207	186	184	178	206	217	229	231	227	215	199	161	172	186	192			
155	207	204	193	180	175	207	218	229	232	229	218	213	168	159	184	197			
160	208	203	186	166	169	195	227	225	227	225	219	220	179	151	162	191			
165	209	205	170	162	157	171	228	232	230	229	230	220	168	145	155	164			
170	214	170	155	162	159	164	201	225	231	232	220	204	163	157	159	158			
175	201	126	169	175	175	171	176	181	160	161	184	178	169	173	170	169			
180	122	140	166	181	185	182	168	145	86.1	83.6	147	168	180	184	181	170			

C Range: 0 - 360DEG
 C Interval: 22.5DEG
 Test Speed: HIGH
 Temperature:25.2℃
 Operators:Dano
 Test Date:2023-06-12

γ Range: 0 - 180DEG
 γ Interval: 1.0DEG
 Test System:EVERFINE GO-R5000_V2 SYSTEM V2.00.459
 Humidity:55.3%
 Test Distance:2.900m [K=0.8810]
 Remarks: