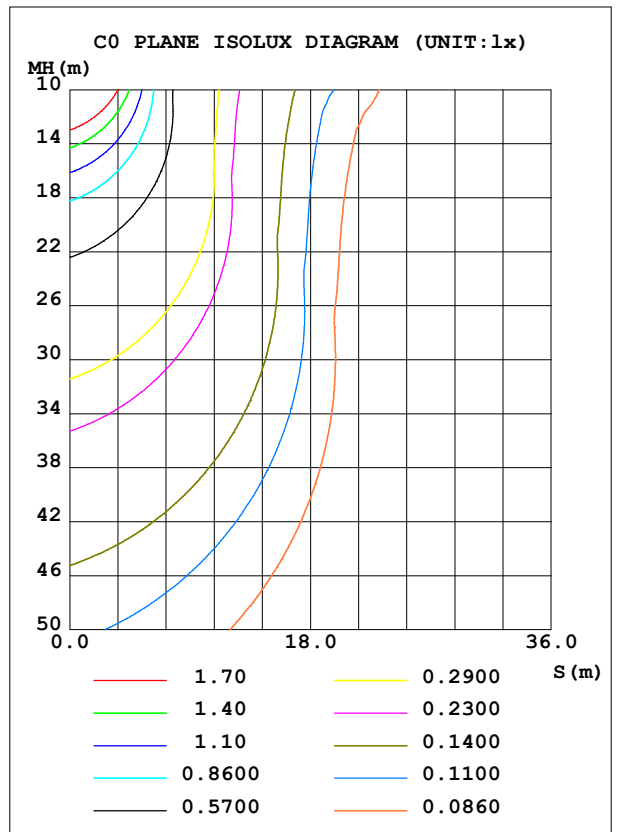
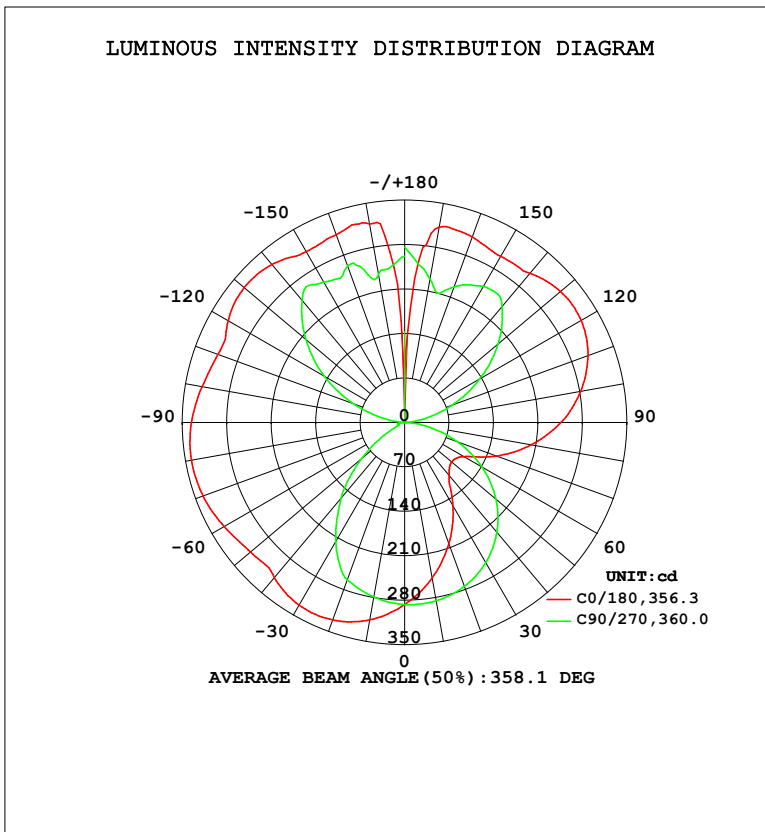


LUMINAIRE PHOTOMETRIC TEST REPORT

Test:U:120.0V I:0.3136A P:37.20W PF:0.9887 Freq:60.01Hz Lamp Flux:2666.49x1 lm		
NAME: PT07-44-40S-952C5-MVTD-SB002 5000K	TYPE:	WEIGHT:
SPEC.:	DIM.:	SERIAL No.:
MFR.: FOSHAN LEDKEY LIGHTING CO.,LTD.	SUR.:	Shielding Angle:

DATA OF LAMP		PHOTOMETRIC DATA			
MODEL		Imax (cd)	341.0	S/MH (C0/180)	1.68
NOMINAL POWER (W)		LOR (%)	100.0	S/MH (C90/270)	1.15
RATED VOLTAGE (V)	120	TOTAL FLUX (lm)	2666.5	η UP, DN (C0-180)	27.2, 21.7
NOMINAL FLUX (lm)	2666.49	CIE CLASS	DIFFUSE	η UP, DN (C180-360)	28.4, 22.7
LAMPS INSIDE	1	η up (%)	55.6	CIBSE SHR NOM	1.25
TEST VOLTAGE (V)	120	η down (%)	44.4	CIBSE SHR MAX	1.35



C Range: 0 - 360DEG
 C Interval: 22.5DEG
 Test Speed: HIGH
 Temperature: 25.2°C
 Operators: Dano
 Test Date: 2023-06-13

γ Range: 0 - 180DEG
 γ Interval: 1.0DEG
 Test System: EVERFINE GO-R5000_V2 SYSTEM V2.00.459
 Humidity: 55.3%
 Test Distance: 2.900m [K=0.8810]
 Remarks:

ZONAL FLUX DIAGRAM

ZONAL FLUX DIAGRAM:

γ	C0	C45	C90	C135	C180	C225	C270	C315	γ	Φ zone	Φ total	%lum, lamp
10	249.1	260.5	285.2	307.5	315.5	303.3	279.2	257.7	0- 10	27.15	27.15	1.02,1.02
20	203.5	225.9	274.9	317.9	330.9	308.5	263.7	220.7	10- 20	78.03	105.2	3.94,3.94
30	152.5	184.1	255.1	316.2	332.2	302.2	217.0	177.4	20- 30	118.6	223.8	8.39,8.39
40	109.3	136.2	225.9	301.5	319.2	284.2	155.7	129.5	30- 40	142.7	366.5	13.7,13.7
50	97.12	92.62	187.6	274.3	316.9	255.9	87.70	86.81	40- 50	151.2	517.7	19.4,19.4
60	107.9	73.33	140.7	255.2	328.2	238.7	27.79	73.13	50- 60	152.9	670.6	25.1,25.1
70	154.6	81.44	87.79	248.0	337.8	235.3	11.40	88.00	60- 70	156.7	827.3	31,31
80	202.8	123.3	34.14	240.9	340.9	233.2	9.648	133.9	70- 80	170.2	997.6	37.4,37.4
90	246.1	162.3	1.565	229.3	335.7	227.4	0.6031	177.2	80- 90	186.3	1184	44.4,44.4
100	281.1	196.1	27.12	218.3	323.9	221.9	27.11	214.2	90-100	200.7	1385	51.9,51.9
110	307.3	222.7	78.96	226.1	313.0	232.0	84.82	242.2	100-110	215.6	1600	60,60
120	321.0	240.1	136.1	250.4	320.9	256.4	146.5	259.5	110-120	225.8	1826	68.5,68.5
130	320.8	247.3	192.3	264.3	330.0	270.1	203.0	264.7	120-130	224.3	2050	76.9,76.9
140	306.4	261.2	238.7	270.9	324.8	276.6	251.3	267.8	130-140	207.2	2257	84.7,84.7
150	302.3	273.1	247.7	289.1	310.8	295.6	254.9	279.6	140-150	175.7	2433	91.2,91.2
160	311.1	254.0	227.1	308.6	314.9	313.7	262.3	252.3	150-160	131.5	2565	96.2,96.2
170	312.0	229.9	230.0	291.9	317.4	312.3	237.7	214.2	160-170	77.57	2642	99.1,99.1
180	74.64	247.9	276.0	236.2	109.5	223.5	261.5	260.0	170-180	24.33	2666	100,100
DEG	LUMINOUS INTENSITY:cd									UNIT:lm		

Conical surface Flux(90deg): 441.7 lm

%lum = 16.6%

%lamp = 16.6%

Conical surface Flux(120deg): 670.59 lm

%lum = 25.1%

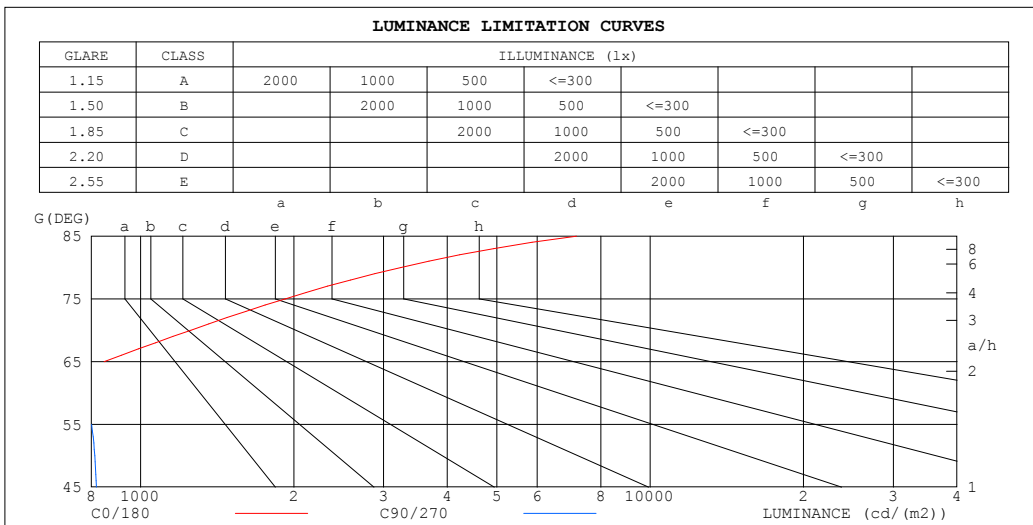
%lamp = 25.1%

C Range: 0 - 360DEG
 C Interval: 22.5DEG
 Test Speed: HIGH
 Temperature:25.2℃
 Operators:Dano
 Test Date:2023-06-13

γ Range: 0 - 180DEG
 γ Interval: 1.0DEG
 Test System:EVERFINE GO-R5000_V2 SYSTEM V2.00.459
 Humidity:55.3%
 Test Distance:2.900m [K=0.8810]
 Remarks:

LUMINANCE LIMITATION CURVES

Test:U:120.0V I:0.3136A P:37.20W PF:0.9887 Freq:60.01Hz Lamp Flux:2666.49x1 lm		
NAME: PT07-44-40S-952C5-MVTD-SB002 5000K	TYPE:	WEIGHT:
SPEC.:	DIM.:	SERIAL No.:
MFR.: FOSHAN LEDKEY LIGHTING CO.,LTD.	SUR.:	Shielding Angle:



LUMINANCE cd/(m2)		
G (DEG)	C0/180	C90/270
85	7170	386
80	3242	548
75	1922	646
70	1255	715
65	849	756
60	599	784
55	480	802
50	419	813
45	394	819

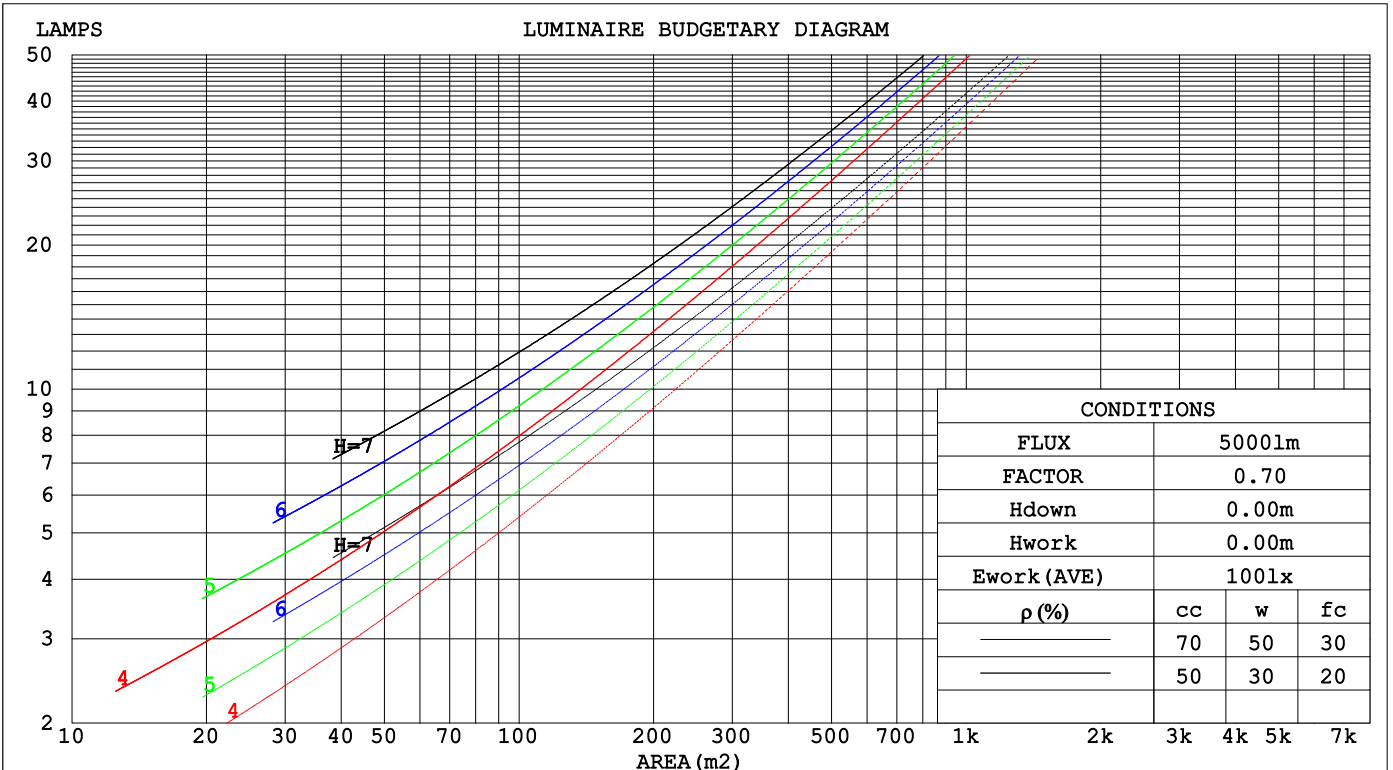
C Range: 0 - 360DEG
 C Interval: 22.5DEG
 Test Speed: HIGH
 Temperature: 25.2°C
 Operators: Dano
 Test Date: 2023-06-13

γ Range: 0 - 180DEG
 γ Interval: 1.0DEG
 Test System: EVERFINE GO-R5000_V2 SYSTEM V2.00.459
 Humidity: 55.3%
 Test Distance: 2.900m [K=0.8810]
 Remarks:

CU AND LUMINAIRE BUDGETARY ESTIMATE DIAGRAM

Test:U:120.0V I:0.3136A P:37.20W PF:0.9887 Freq:60.01Hz Lamp Flux:2666.49x1 lm		
NAME: PT07-44-40S-952C5-MVTD-SB002 5000K	TYPE:	WEIGHT:
SPEC.:	DIM.:	SERIAL No.:
MFR.: FOSHAN LEDKEY LIGHTING CO.,LTD.	SUR.:	Shielding Angle:

ρcc	80%			70%			50%			30%			10%			0
ρw	50%	30%	10%	50%	30%	10%	50%	30%	10%	50%	30%	10%	50%	30%	10%	0
ρfc	20%			20%			20%			20%			20%			0
RCR	RCR:Room Cavity Ratio						Coefficients of Utilization(CU)									
0.0	1.06	1.06	1.06	.97	.97	.97	.80	.80	.80	.65	.65	.65	.51	.51	.51	.44
1.0	.88	.83	.78	.80	.76	.72	.66	.62	.59	.52	.50	.48	.40	.38	.37	.31
2.0	.75	.68	.62	.69	.62	.57	.56	.51	.47	.45	.41	.38	.34	.31	.29	.24
3.0	.65	.57	.51	.60	.52	.47	.49	.43	.39	.39	.35	.31	.29	.26	.24	.19
4.0	.58	.49	.42	.52	.45	.39	.43	.37	.32	.34	.30	.26	.26	.23	.20	.16
5.0	.51	.42	.36	.47	.39	.33	.38	.32	.28	.31	.26	.22	.23	.20	.17	.14
6.0	.46	.37	.31	.42	.34	.28	.34	.28	.24	.27	.23	.19	.21	.18	.15	.12
7.0	.41	.33	.27	.38	.30	.25	.31	.25	.21	.25	.20	.17	.19	.16	.13	.10
8.0	.37	.29	.23	.34	.27	.22	.28	.22	.18	.23	.18	.15	.18	.14	.12	.09
9.0	.34	.26	.21	.31	.24	.19	.26	.20	.16	.21	.17	.13	.16	.13	.11	.08
10.0	.31	.23	.19	.28	.22	.17	.24	.18	.15	.19	.15	.12	.15	.12	.10	.07



C Range: 0 - 360DEG
 C Interval: 22.5DEG
 Test Speed: HIGH
 Temperature:25.2°C
 Operators:Dano
 Test Date:2023-06-13

γ Range: 0 - 180DEG
 γ Interval: 1.0DEG
 Test System:EVERFINE GO-R5000_V2 SYSTEM V2.00.459
 Humidity:55.3%
 Test Distance:2.900m [K=0.8810]
 Remarks:

WEC AND CCEC

Test:U:120.0V I:0.3136A P:37.20W PF:0.9887 Freq:60.01Hz Lamp Flux:2666.49x1 lm		
NAME: PT07-44-40S-952C5-MVTD-SB002 5000K	TYPE:	WEIGHT:
SPEC.:	DIM.:	SERIAL No.:
MFR.: FOSHAN LEDKEY LIGHTING CO.,LTD.	SUR.:	Shielding Angle:

ρcc	80%			70%			50%			30%			10%			0
ρw	50%	30%	10%	50%	30%	10%	50%	30%	10%	50%	30%	10%	50%	30%	10%	0
ρfc	20%			20%			20%			20%			20%			0
RCR	RCR:Room Cavity Ratio						Wall Exitance Coefficients(WEC)									
0.0																
1.0	.362	.206	.065	.338	.193	.061	.293	.168	.054	.251	.145	.047	.213	.124	.040	
2.0	.308	.169	.052	.286	.158	.049	.245	.136	.042	.207	.116	.036	.172	.097	.031	
3.0	.272	.145	.043	.253	.135	.041	.215	.116	.035	.180	.099	.030	.148	.082	.025	
4.0	.245	.127	.037	.227	.119	.035	.192	.102	.030	.160	.086	.026	.130	.071	.022	
5.0	.223	.114	.033	.206	.106	.031	.174	.091	.027	.145	.076	.023	.117	.063	.019	
6.0	.205	.103	.029	.189	.096	.028	.160	.082	.024	.132	.069	.020	.107	.056	.017	
7.0	.189	.094	.027	.175	.087	.025	.148	.075	.021	.122	.063	.018	.098	.051	.015	
8.0	.176	.086	.024	.162	.080	.023	.137	.068	.020	.113	.057	.017	.091	.047	.014	
9.0	.164	.079	.022	.152	.074	.021	.128	.063	.018	.106	.053	.015	.085	.043	.012	
10.0	.154	.074	.020	.142	.069	.019	.120	.059	.017	.099	.049	.014	.079	.040	.011	

ρcc	80%			70%			50%			30%			10%			0
ρw	50%	30%	10%	50%	30%	10%	50%	30%	10%	50%	30%	10%	50%	30%	10%	0
ρfc	20%			20%			20%			20%			20%			0
RCR	RCR:Room Cavity Ratio						Ceiling Cavity Exitance Coefficients(CCEC)									
0.0	.614	.614	.614	.525	.525	.525	.358	.358	.358	.206	.206	.206	.066	.066	.066	
1.0	.611	.583	.557	.523	.500	.480	.358	.344	.332	.206	.199	.193	.066	.064	.062	
2.0	.604	.562	.526	.518	.484	.455	.355	.335	.317	.205	.195	.186	.066	.063	.061	
3.0	.597	.547	.506	.512	.472	.439	.352	.328	.308	.203	.191	.181	.065	.062	.059	
4.0	.590	.535	.493	.506	.462	.428	.348	.322	.302	.201	.189	.178	.065	.061	.059	
5.0	.583	.526	.484	.501	.455	.421	.345	.318	.297	.200	.187	.176	.064	.061	.058	
6.0	.576	.519	.477	.495	.449	.416	.342	.314	.294	.198	.185	.175	.064	.060	.058	
7.0	.570	.513	.473	.490	.444	.412	.339	.312	.292	.197	.184	.174	.064	.060	.057	
8.0	.564	.508	.469	.485	.440	.409	.336	.309	.290	.195	.182	.173	.063	.060	.057	
9.0	.558	.503	.466	.481	.437	.407	.333	.307	.289	.194	.181	.172	.063	.060	.057	
10.0	.553	.499	.464	.477	.434	.405	.331	.305	.288	.193	.180	.172	.063	.059	.057	

C Range: 0 - 360DEG
 C Interval: 22.5DEG
 Test Speed: HIGH
 Temperature:25.2℃
 Operators:Dano
 Test Date:2023-06-13

γ Range: 0 - 180DEG
 γ Interval: 1.0DEG
 Test System:EVERFINE GO-R5000_V2 SYSTEM V2.00.459
 Humidity:55.3%
 Test Distance:2.900m [K=0.8810]
 Remarks:

UGR(Unified Glare Rating) Table

Test:U:120.0V I:0.3136A P:37.20W PF:0.9887 Freq:60.01Hz										
Lamp Flux:2666.49x1 lm										
NAME: PT07-44-40S-952C5-MVTD-SB002 5000K					TYPE:			WEIGHT:		
SPEC.:					DIM.:			SERIAL No.:		
MFR.: FOSHAN LEDKEY LIGHTING CO.,LTD.					SUR.:			Shielding Angle:		
ceiling/cavity	0.7	0.7	0.5	0.5	0.3	0.7	0.7	0.5	0.5	0.3
walls	0.5	0.3	0.5	0.3	0.3	0.5	0.3	0.5	0.3	0.3
working plane	0.2	0.2	0.2	0.2	0.2	0.2	0.2	0.2	0.2	0.2
Room dimensions	Viewed crosswise					Viewed endwise				
x = 2H y = 2H	0.7	2.6	2.6	4.5	7.0	6.0	7.8	7.9	9.8	12.3
3H	6.0	7.7	7.9	9.6	12.2	7.3	9.0	9.3	11.0	13.6
4H	8.7	10.3	10.7	12.3	14.9	7.8	9.4	9.7	11.4	14.0
6H	11.6	13.1	13.6	15.1	17.7	8.1	9.5	10.0	11.6	14.2
8H	13.1	14.5	15.1	16.5	19.2	8.1	9.5	10.1	11.5	14.2
12H	14.8	16.1	16.8	18.2	20.9	8.0	9.4	10.1	11.4	14.2
4H 2H	0.7	2.3	2.6	4.3	6.9	7.0	8.6	9.0	10.6	13.2
3H	6.3	7.7	8.3	9.7	12.4	8.9	10.2	10.9	12.3	15.0
4H	9.4	10.6	11.4	12.7	15.4	9.6	10.9	11.6	12.9	15.6
6H	12.5	13.6	14.5	15.7	18.5	10.1	11.3	12.2	13.3	16.1
8H	14.1	15.2	16.2	17.3	20.1	10.3	11.3	12.3	13.4	16.2
12H	16.0	16.9	18.0	19.0	21.8	10.3	11.3	12.4	13.4	16.2
8H 4H	9.5	10.6	11.6	12.6	15.4	11.2	12.3	13.3	14.4	17.1
6H	13.0	13.9	15.1	16.1	18.9	12.3	13.2	14.4	15.3	18.1
8H	14.9	15.7	17.0	17.9	20.7	12.7	13.5	14.9	15.7	18.5
12H	17.0	17.8	19.2	19.9	22.8	13.0	13.7	15.2	15.9	18.8
12H 4H	9.4	10.4	11.5	12.5	15.3	11.8	12.8	13.9	14.9	17.7
6H	13.1	13.9	15.2	16.0	18.9	13.2	14.0	15.3	16.1	19.0
8H	15.1	15.8	17.3	18.0	20.9	13.9	14.6	16.0	16.8	19.7
CIE190: 2010										

CIE190: 2010
Area: 0.36 m2

C Range: 0 - 360DEG
C Interval: 22.5DEG
Test Speed: HIGH
Temperature:25.2℃
Operators:Dano
Test Date:2023-06-13

γ Range: 0 - 180DEG
γ Interval: 1.0DEG
Test System:EVERFINE GO-R5000_V2 SYSTEM V2.00.459
Humidity:55.3%
Test Distance:2.900m [K=0.8810]
Remarks:

UTILIZATION FACTORS TABLE

Test:U:120.0V I:0.3136A P:37.20W PF:0.9887 Freq:60.01Hz Lamp Flux:2666.49x1 lm		
NAME: PT07-44-40S-952C5-MVTD-SB002 5000K	TYPE:	WEIGHT:
SPEC.:	DIM.:	SERIAL No.:
MFR.: FOSHAN LEDKEY LIGHTING CO.,LTD.	SUR.:	Shielding Angle:

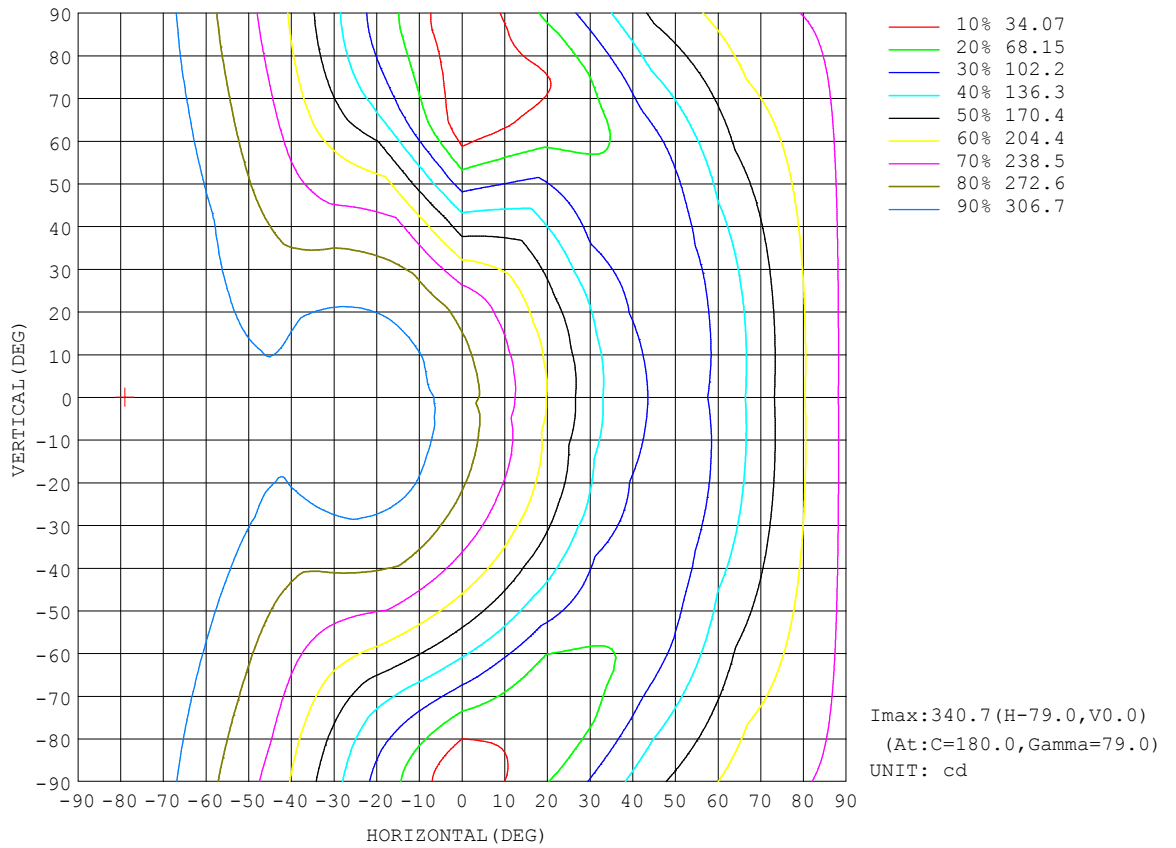
REFLECTANCE										
Ceiling	0.8	0.8	0.8	0.7	0.7	0.7	0.5	0.5	0.5	0
Walls	0.7	0.5	0.3	0.7	0.5	0.3	0.7	0.5	0.3	0
Working plane	0.2	0.2	0.2	0.2	0.2	0.2	0.2	0.2	0.2	0
ROOM INDEX	UTILIZATION FACTORS (PERCENT) $k(RI) \times RCR = 5$									
k = 0.60	38	26	20	36	25	19	32	23	17	10
0.80	47	34	26	44	32	25	38	29	23	13
1.00	54	41	33	50	39	31	43	35	28	16
1.25	61	48	39	56	45	37	48	39	32	18
1.50	66	53	44	61	50	42	51	43	36	20
2.00	73	62	53	67	57	49	57	49	43	23
2.50	78	67	59	72	62	55	60	53	47	25
3.00	82	72	64	75	66	59	62	56	51	27
4.00	87	78	71	79	72	66	66	60	56	30
5.00	90	82	76	82	76	70	68	63	59	32
ROOM INDEX	UF(total)									Direct
According to DIN EN 13032-2 2004			Suspended				SHRNOM = 1.25			

C Range: 0 - 360DEG
 C Interval: 22.5DEG
 Test Speed: HIGH
 Temperature:25.2°C
 Operators:Dano
 Test Date:2023-06-13

γ Range: 0 - 180DEG
 γ Interval: 1.0DEG
 Test System:EVERFINE GO-R5000_V2 SYSTEM V2.00.459
 Humidity:55.3%
 Test Distance:2.900m [K=0.8810]
 Remarks:

ISOCANDELA DIAGRAM

Test:U:120.0V I:0.3136A P:37.20W PF:0.9887 Freq:60.01Hz Lamp Flux:2666.49x1 lm		
NAME: PT07-44-40S-952C5-MVTD-SB002 5000K	TYPE:	WEIGHT:
SPEC.:	DIM.:	SERIAL No.:
MFR.: FOSHAN LEDKEY LIGHTING CO.,LTD.	SUR.:	Shielding Angle:

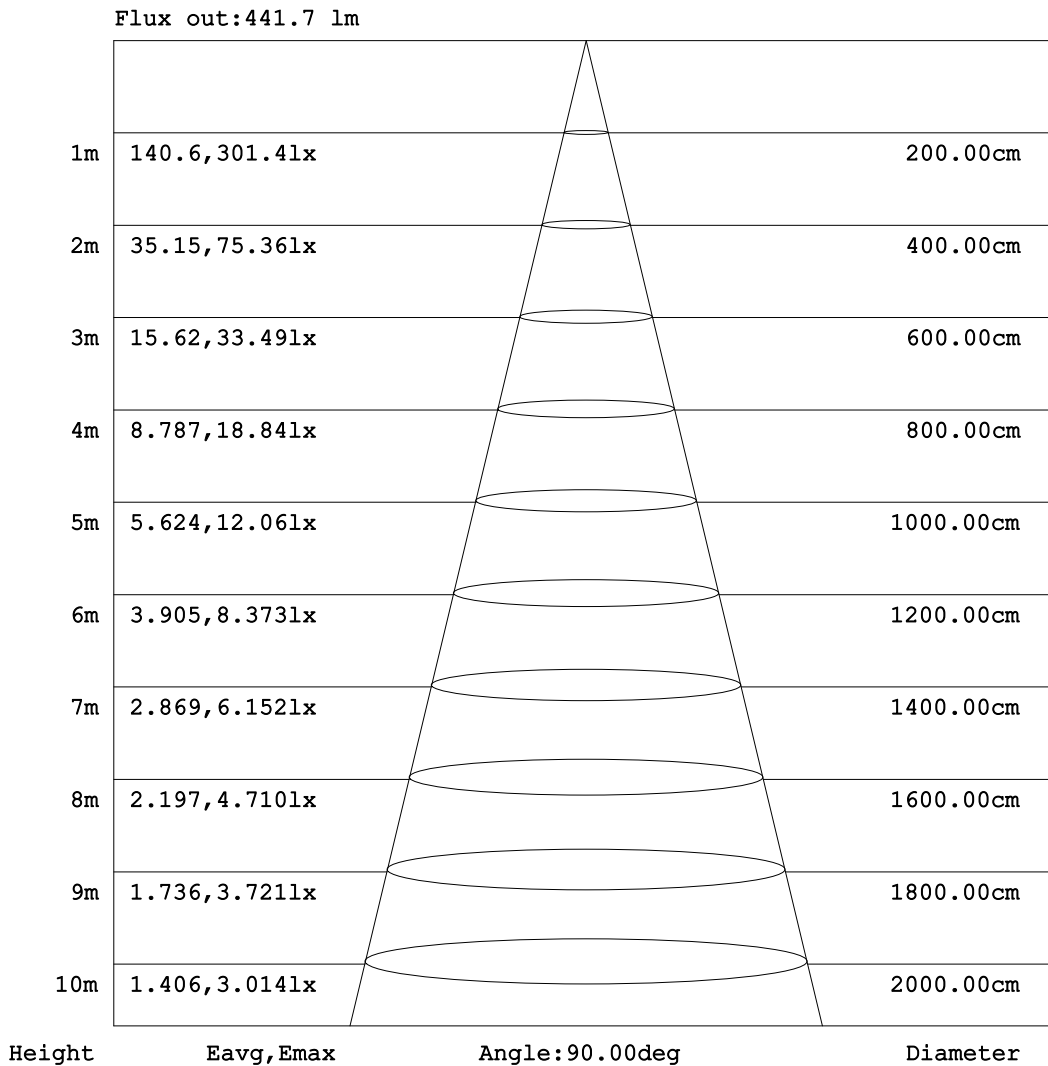


C Range: 0 - 360DEG
C Interval: 22.5DEG
Test Speed: HIGH
Temperature: 25.2°C
Operators: Dano
Test Date: 2023-06-13

γ Range: 0 - 180DEG
γ Interval: 1.0DEG
Test System: EVERFINE GO-R5000_V2 SYSTEM V2.00.459
Humidity: 55.3%
Test Distance: 2.900m [K=0.8810]
Remarks:

AAI Figure

Test:U:120.0V I:0.3136A P:37.20W PF:0.9887 Freq:60.01Hz Lamp Flux:2666.49x1 lm		
NAME: PT07-44-40S-952C5-MVTD-SB002 5000K	TYPE:	WEIGHT:
SPEC.:	DIM.:	SERIAL No.:
MFR.: FOSHAN LEDKEY LIGHTING CO.,LTD.	SUR.:	Shielding Angle:



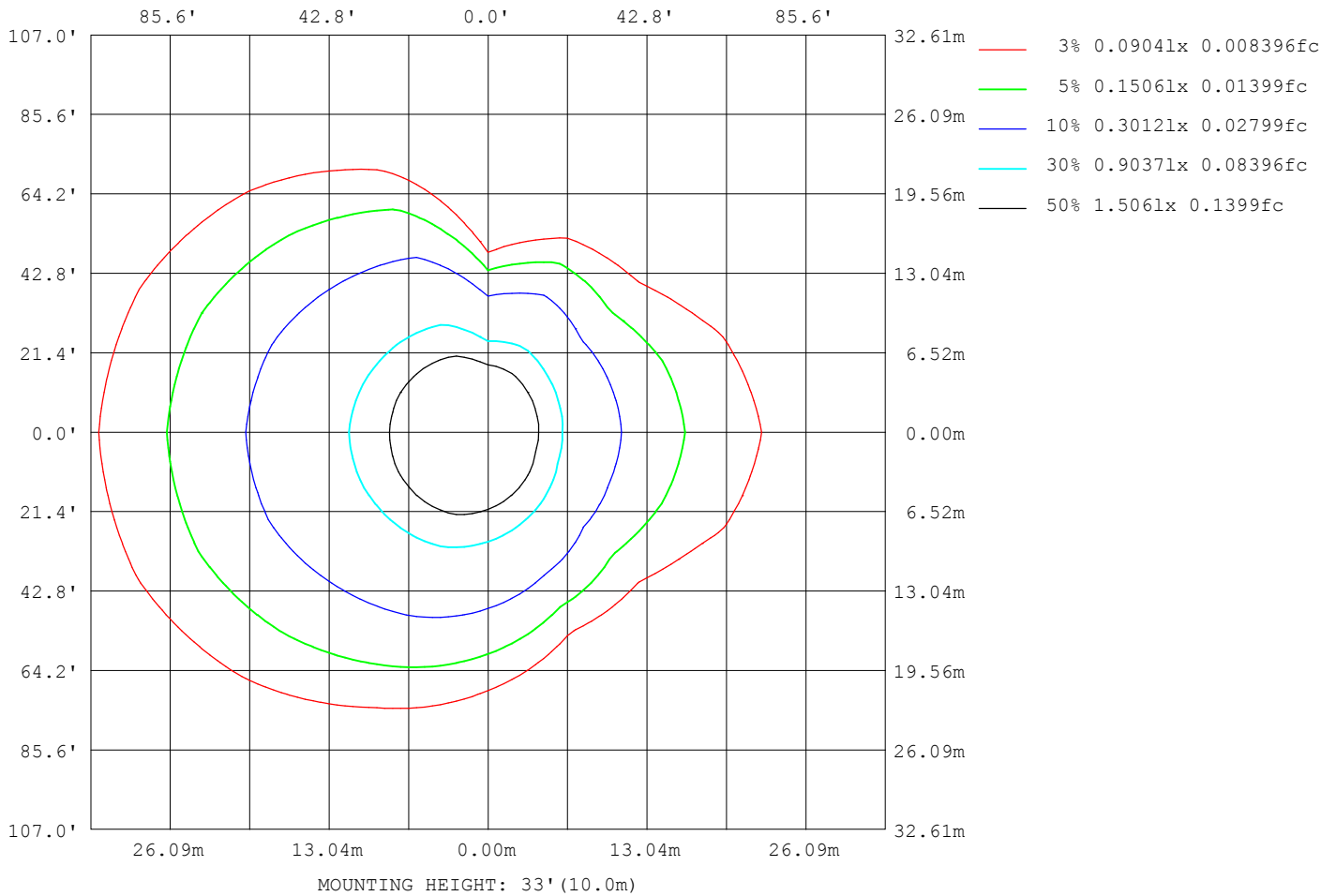
Note:The Curves indicate the illuminated area and the average illumination when the luminaire is at different distance.

C Range: 0 - 360DEG
 C Interval: 22.5DEG
 Test Speed: HIGH
 Temperature:25.2℃
 Operators:Dano
 Test Date:2023-06-13

γ Range: 0 - 180DEG
 γ Interval: 1.0DEG
 Test System:EVERFINE GO-R5000_V2 SYSTEM V2.00.459
 Humidity:55.3%
 Test Distance:2.900m [K=0.8810]
 Remarks:

ISOLUX DIAGRAM

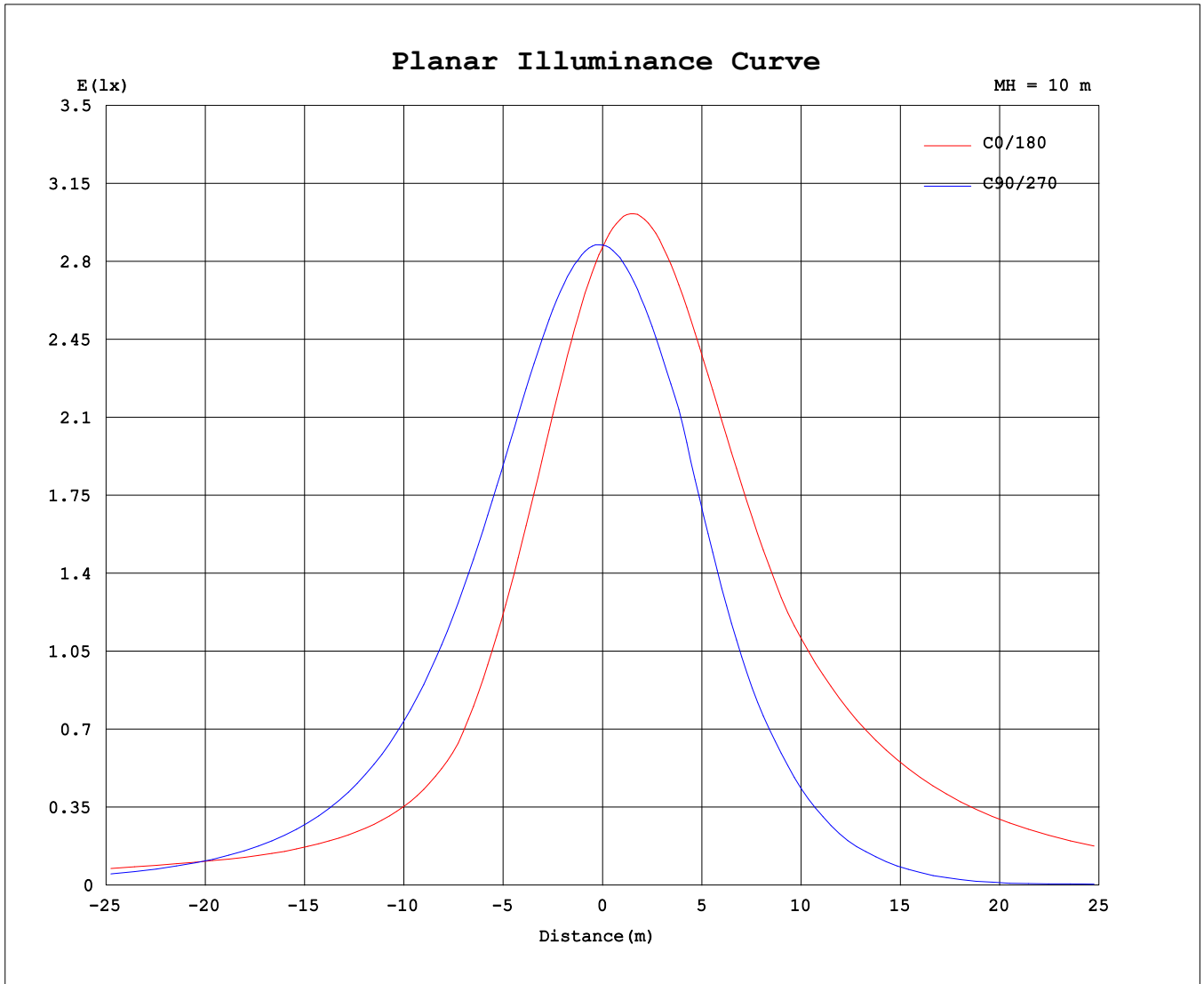
Test:U:120.0V I:0.3136A P:37.20W PF:0.9887 Freq:60.01Hz Lamp Flux:2666.49x1 lm		
NAME: PT07-44-40S-952C5-MVTD-SB002 5000K	TYPE:	WEIGHT:
SPEC.:	DIM.:	SERIAL No.:
MFR.: FOSHAN LEDKEY LIGHTING CO.,LTD.	SUR.:	Shielding Angle:



C Range: 0 - 360DEG
 C Interval: 22.5DEG
 Test Speed: HIGH
 Temperature:25.2°C
 Operators:Dano
 Test Date:2023-06-13

γ Range: 0 - 180DEG
 γ Interval: 1.0DEG
 Test System:EVERFINE GO-R5000_V2 SYSTEM V2.00.459
 Humidity:55.3%
 Test Distance:2.900m [K=0.8810]
 Remarks:

Planar Illuminance Curve



C Range: 0 - 360DEG
C Interval: 22.5DEG
Test Speed: HIGH
Temperature:25.2℃
Operators:Dano
Test Date:2023-06-13

γ Range: 0 - 180DEG
γ Interval: 1.0DEG
Test System:EVERFINE GO-R5000_V2 SYSTEM V2.00.459
Humidity:55.3%
Test Distance:2.900m [K=0.8810]
Remarks:

LUMINOUS DISTRIBUTION INTENSITY DATA

Test:U:120.0V I:0.3136A P:37.20W PF:0.9887 Freq:60.01Hz Lamp Flux:2666.49x1 lm		
NAME: PT07-44-40S-952C5-MVTD-SB002 5000K	TYPE:	WEIGHT:
SPEC.:	DIM.:	SERIAL No.:
MFR.: FOSHAN LEDKEY LIGHTING CO.,LTD.	SUR.:	Shielding Angle:

Table--1

UNIT: cd

C (DEG) \ γ (DEG)	0	22.5	45	67.5	90	112.5	135	157.5	180	202.5	225	247.5	270	292.5	315	337.5			
0	287	287	287	287	287	287	287	287	287	287	287	287	287	287	287	287			
5	269	270	275	280	287	293	298	301	302	301	296	290	284	278	273	270			
10	249	251	261	272	285	298	308	313	315	313	303	292	279	267	258	252			
15	227	230	244	261	281	300	314	323	325	321	307	291	272	255	240	230			
20	204	208	226	249	275	301	318	328	331	327	308	288	264	240	221	208			
25	179	184	206	234	266	300	319	331	333	328	307	282	244	224	200	184			
30	153	158	184	217	255	295	316	329	332	327	302	274	217	206	177	159			
35	126	132	161	198	242	288	310	325	327	322	295	264	186	186	154	133			
40	109	111	136	178	226	276	301	316	319	313	284	251	156	165	130	110			
45	100	99.8	111	155	208	263	289	305	314	301	271	236	123	143	104	98.3			
50	97.1	93.7	92.6	131	188	246	274	305	317	299	256	219	87.7	120	86.8	92.4			
55	99.2	93.1	80.3	106	165	226	261	307	322	300	244	200	56.6	95.4	76.9	92.2			
60	108	98.0	73.3	79.3	141	205	255	310	328	304	239	179	27.8	70.8	73.1	97.4			
65	129	116	72.3	55.9	115	181	251	314	334	309	236	156	10.4	49.4	75.3	114			
70	155	140	81.4	41.0	87.8	156	248	316	338	313	235	136	11.4	37.8	88.0	138			
75	179	164	103	34.2	60.1	139	245	317	340	315	234	122	11.7	35.0	111	163			
80	203	186	123	41.8	34.1	124	241	316	341	316	233	112	9.65	46.4	134	187			
85	225	208	143	58.1	12.1	114	236	313	339	315	231	106	3.80	65.4	156	209			
90	246	228	162	75.0	1.57	106	229	308	336	312	227	103	0.60	84.9	177	230			
95	265	246	180	91.6	7.75	103	223	302	330	308	224	104	7.03	103	197	250			
100	281	262	196	107	27.1	110	218	295	324	302	222	114	27.1	121	214	267			
105	295	275	210	122	51.7	128	217	290	318	297	223	132	54.6	138	230	282			
110	307	287	223	136	79.0	144	226	287	313	295	232	150	84.8	152	242	294			
115	316	295	233	148	108	160	239	292	312	297	245	165	116	165	252	303			
120	321	300	240	163	136	173	250	301	321	307	256	179	146	178	259	308			
125	323	302	245	177	165	190	259	308	327	314	265	194	176	192	264	311			
130	321	301	247	197	192	208	264	311	330	318	270	213	203	212	265	309			
135	315	297	253	218	217	227	267	311	329	319	273	233	228	228	268	304			
140	306	293	261	238	239	245	271	308	325	317	277	253	251	244	268	297			
145	304	295	269	253	250	263	279	301	317	312	285	272	263	259	267	296			
150	302	298	273	261	248	278	289	302	311	310	296	289	255	265	280	296			
155	305	304	274	242	239	289	298	307	312	313	305	304	250	231	283	290			
160	311	308	254	220	227	289	309	312	315	318	314	315	262	220	252	292			
165	314	286	230	217	210	254	309	319	322	324	323	316	250	223	209	252			
170	312	217	230	234	230	236	292	313	317	324	312	296	238	227	214	212			
175	255	200	241	249	251	242	254	267	269	298	272	260	247	250	242	231			
180	74.6	217	248	264	276	262	236	216	109	81.4	223	243	261	266	260	242			

C Range: 0 - 360DEG
 C Interval: 22.5DEG
 Test Speed: HIGH
 Temperature:25.2℃
 Operators:Dano
 Test Date:2023-06-13

γ Range: 0 - 180DEG
 γ Interval: 1.0DEG
 Test System:EVERFINE GO-R5000_V2 SYSTEM V2.00.459
 Humidity:55.3%
 Test Distance:2.900m [K=0.8810]
 Remarks: