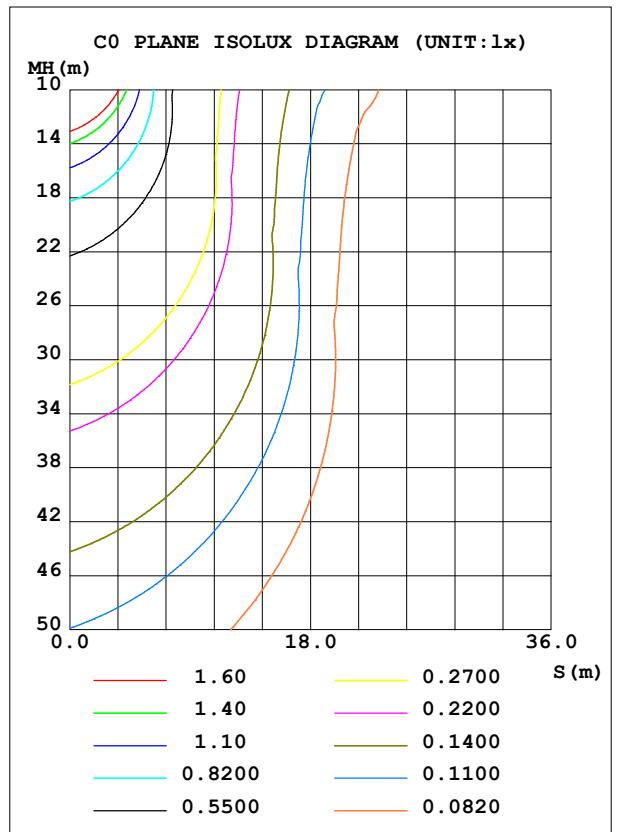
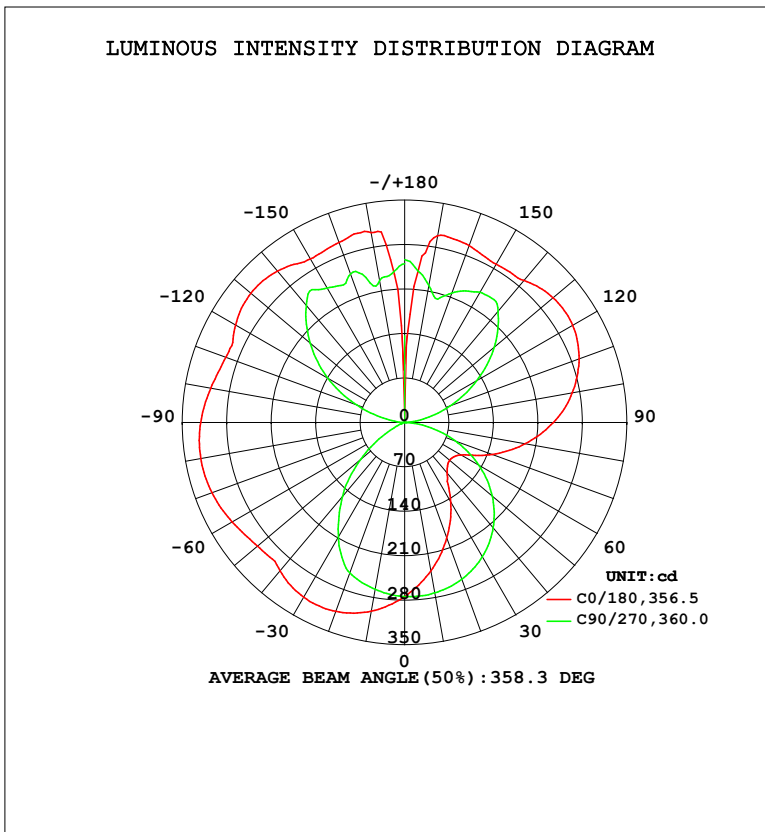


LUMINAIRE PHOTOMETRIC TEST REPORT

|   |       |                  |
|---|-------|------------------|
| Test:U:119.9V I:0.3199A P:37.92W PF:0.9892 Freq:60.01Hz<br>Lamp Flux:2548.42x1 lm |       |                  |
| NAME: PT07-44-40S-952C5-MVTD-SB002 4000K  | TYPE: | WEIGHT:          |
| SPEC.:  | DIM.: | SERIAL No.:      |
| MFR.: FOSHAN LEDKEY LIGHTING CO.,LTD.   | SUR.: | Shielding Angle: |

| DATA OF LAMP      |         | PHOTOMETRIC DATA |         |                          |            |
|-------------------|---------|------------------|---------|--------------------------|------------|
| MODEL             |         | Imax (cd)        | 326.1   | S/MH (C0/180)            | 1.68       |
| NOMINAL POWER (W) |         | LOR (%)          | 100.0   | S/MH (C90/270)           | 1.15       |
| RATED VOLTAGE (V) | 120     | TOTAL FLUX (lm)  | 2548.4  | $\eta$ UP, DN (C0-180)   | 27.2, 21.7 |
| NOMINAL FLUX (lm) | 2548.42 | CIE CLASS        | DIFFUSE | $\eta$ UP, DN (C180-360) | 28.4, 22.7 |
| LAMPS INSIDE      | 1       | $\eta$ up (%)    | 55.6    | CIBSE SHR NOM            | 1.25       |
| TEST VOLTAGE (V)  | 120     | $\eta$ down (%)  | 44.4    | CIBSE SHR MAX            | 1.35       |



C Range: 0 - 360DEG  
 C Interval: 22.5DEG  
 Test Speed: HIGH  
 Temperature: 25.2°C  
 Operators: Dano  
 Test Date: 2023-06-13

$\gamma$  Range: 0 - 180DEG  
 $\gamma$  Interval: 1.0DEG  
 Test System: EVERFINE GO-R5000\_V2 SYSTEM V2.00.459  
 Humidity: 55.3%  
 Test Distance: 2.900m [K=0.8810]  
 Remarks:

## ZONAL FLUX DIAGRAM

ZONAL FLUX DIAGRAM:

| $\gamma$ | C0                    | C45   | C90   | C135  | C180  | C225  | C270   | C315  | $\gamma$ | $\Phi$ zone | $\Phi$ total | %lum,lamp |
|----------|-----------------------|-------|-------|-------|-------|-------|--------|-------|----------|-------------|--------------|-----------|
| 10       | 237.8                 | 249.1 | 272.5 | 294.0 | 301.5 | 289.8 | 266.9  | 246.4 | 0- 10    | 25.96       | 25.96        | 1.02,1.02 |
| 20       | 194.1                 | 216.0 | 262.9 | 304.1 | 316.6 | 295.2 | 252.3  | 210.5 | 10- 20   | 74.59       | 100.5        | 3.95,3.95 |
| 30       | 145.6                 | 176.1 | 244.4 | 302.6 | 317.9 | 288.8 | 209.1  | 169.0 | 20- 30   | 113.4       | 213.9        | 8.4,8.4   |
| 40       | 104.4                 | 130.4 | 216.9 | 288.5 | 305.2 | 271.5 | 152.1  | 123.4 | 30- 40   | 136.5       | 350.5        | 13.8,13.8 |
| 50       | 92.79                 | 88.66 | 180.2 | 262.7 | 302.9 | 244.1 | 90.70  | 83.04 | 40- 50   | 144.8       | 495.3        | 19.4,19.4 |
| 60       | 103.0                 | 69.86 | 135.3 | 244.9 | 313.5 | 227.3 | 31.74  | 70.24 | 50- 60   | 146.5       | 641.8        | 25.2,25.2 |
| 70       | 147.3                 | 76.87 | 84.75 | 238.3 | 322.9 | 223.8 | 6.784  | 84.89 | 60- 70   | 149.9       | 791.7        | 31.1,31.1 |
| 80       | 193.3                 | 116.5 | 33.33 | 231.6 | 325.9 | 221.6 | 5.126  | 128.5 | 70- 80   | 162.4       | 954.0        | 37.4,37.4 |
| 90       | 234.2                 | 153.7 | 1.539 | 220.7 | 321.2 | 216.1 | 0.5752 | 169.8 | 80- 90   | 177.9       | 1132         | 44.4,44.4 |
| 100      | 267.9                 | 185.8 | 26.04 | 210.2 | 310.2 | 211.1 | 24.94  | 205.0 | 90-100   | 191.7       | 1324         | 51.9,51.9 |
| 110      | 292.4                 | 211.0 | 76.00 | 217.2 | 300.0 | 221.4 | 79.71  | 231.9 | 100-110  | 205.9       | 1529         | 60,60     |
| 120      | 305.7                 | 227.7 | 130.7 | 240.5 | 307.5 | 244.9 | 139.7  | 248.2 | 110-120  | 215.7       | 1745         | 68.5,68.5 |
| 130      | 305.5                 | 234.9 | 184.2 | 253.7 | 316.2 | 258.0 | 194.2  | 252.9 | 120-130  | 214.3       | 1960         | 76.9,76.9 |
| 140      | 291.9                 | 248.6 | 228.8 | 259.6 | 311.3 | 264.3 | 241.2  | 257.0 | 130-140  | 198.0       | 2158         | 84.7,84.7 |
| 150      | 288.0                 | 260.6 | 236.7 | 276.7 | 297.6 | 282.8 | 244.4  | 266.1 | 140-150  | 167.9       | 2325         | 91.3,91.3 |
| 160      | 296.6                 | 242.0 | 216.9 | 295.2 | 301.8 | 300.1 | 249.2  | 241.9 | 150-160  | 125.6       | 2451         | 96.2,96.2 |
| 170      | 298.1                 | 219.8 | 219.8 | 279.4 | 303.4 | 298.3 | 227.4  | 204.3 | 160-170  | 74.09       | 2525         | 99.1,99.1 |
| 180      | 92.21                 | 236.0 | 256.4 | 226.2 | 104.6 | 213.2 | 250.1  | 248.4 | 170-180  | 23.25       | 2548         | 100,100   |
| DEG      | LUMINOUS INTENSITY:cd |       |       |       |       |       |        |       |          | UNIT:lm     |              |           |

Conical surface Flux(90deg): 422.47 lm

%lum = 16.6%

%lamp = 16.6%

Conical surface Flux(120deg): 641.75 lm

%lum = 25.2%

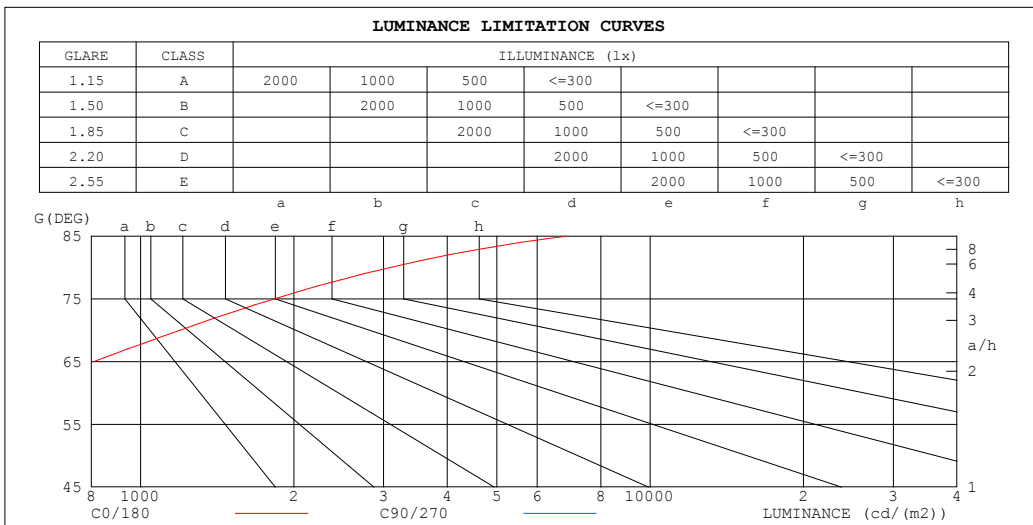
%lamp = 25.2%

C Range: 0 - 360DEG  
C Interval: 22.5DEG  
Test Speed: HIGH  
Temperature:25.2℃  
Operators:Dano  
Test Date:2023-06-13

$\gamma$  Range: 0 - 180DEG  
 $\gamma$  Interval: 1.0DEG  
Test System:EVERFINE GO-R5000\_V2 SYSTEM V2.00.459  
Humidity:55.3%  
Test Distance:2.900m [K=0.8810]  
Remarks:

LUMINANCE LIMITATION CURVES

|   |       |                  |
|---|-------|------------------|
| Test:U:119.9V I:0.3199A P:37.92W PF:0.9892 Freq:60.01Hz<br>Lamp Flux:2548.42x1 lm |       |                  |
| NAME: PT07-44-40S-952C5-MVTD-SB002 4000K  | TYPE: | WEIGHT:          |
| SPEC.:  | DIM.: | SERIAL No.:      |
| MFR.: FOSHAN LEDKEY LIGHTING CO.,LTD.   | SUR.: | Shielding Angle: |



| LUMINANCE cd/(m2) |        |         |
|-------------------|--------|---------|
| G (DEG)           | C0/180 | C90/270 |
| 85                | 6830   | 386     |
| 80                | 3089   | 534     |
| 75                | 1831   | 626     |
| 70                | 1195   | 689     |
| 65                | 809    | 727     |
| 60                | 572    | 753     |
| 55                | 459    | 770     |
| 50                | 401    | 780     |
| 45                | 376    | 785     |

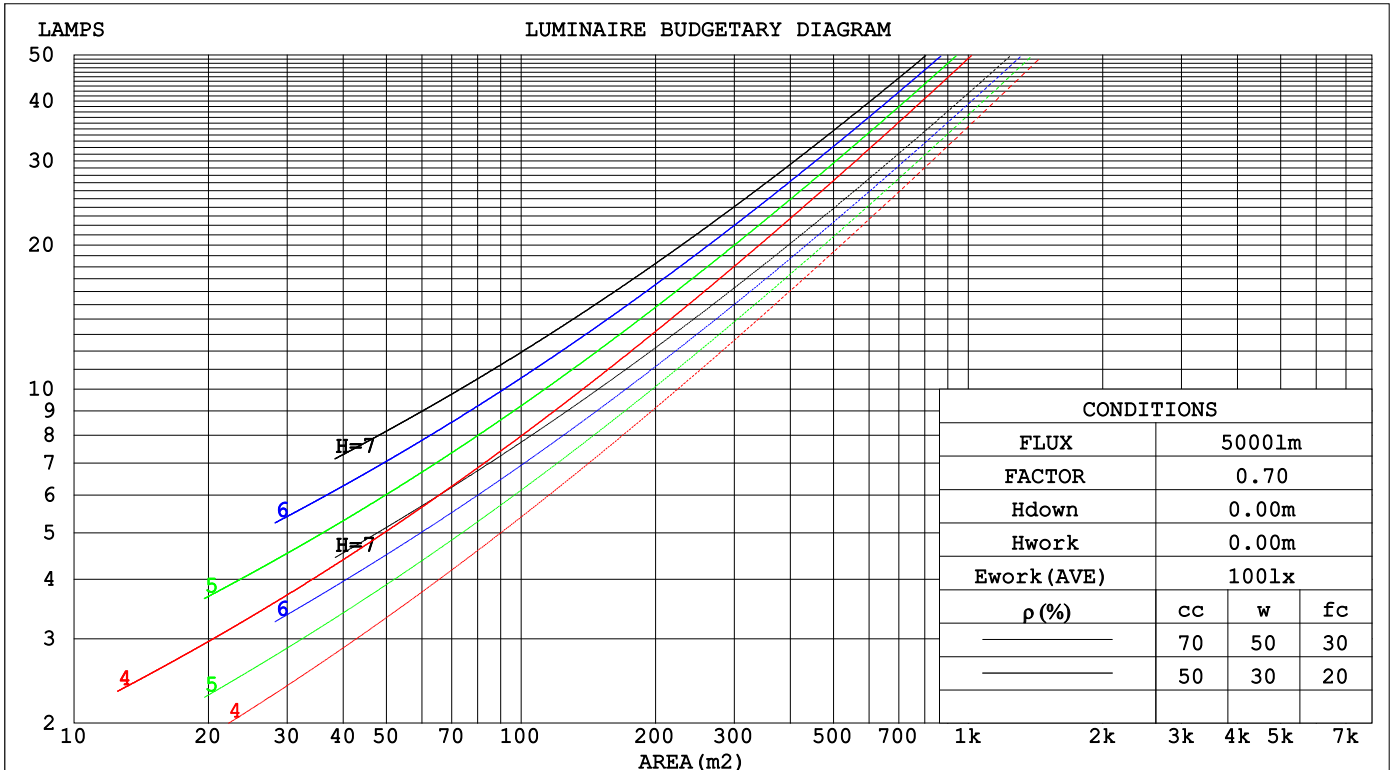
C Range: 0 - 360DEG  
 C Interval: 22.5DEG  
 Test Speed: HIGH  
 Temperature:25.2℃  
 Operators:Dano  
 Test Date:2023-06-13

γ Range: 0 - 180DEG  
 γ Interval: 1.0DEG  
 Test System:EVERFINE GO-R5000\_V2 SYSTEM V2.00.459  
 Humidity:55.3%  
 Test Distance:2.900m [K=0.8810]  
 Remarks:

**CU AND LUMINAIRE BUDGETARY ESTIMATE DIAGRAM**

|   |       |                  |
|---|-------|------------------|
| Test:U:119.9V I:0.3199A P:37.92W PF:0.9892 Freq:60.01Hz<br>Lamp Flux:2548.42x1 lm |       |                  |
| NAME: PT07-44-40S-952C5-MVTD-SB002 4000K  | TYPE: | WEIGHT:          |
| SPEC.:  | DIM.: | SERIAL No.:      |
| MFR.: FOSHAN LEDKEY LIGHTING CO.,LTD.   | SUR.: | Shielding Angle: |

|      |                       |      |      |     |     |     |                                 |     |     |     |     |     |     |     |     |     |
|------|-----------------------|------|------|-----|-----|-----|---------------------------------|-----|-----|-----|-----|-----|-----|-----|-----|-----|
| ρcc  | 80%                   |      |      | 70% |     |     | 50%                             |     |     | 30% |     |     | 10% |     |     | 0   |
| ρw   | 50%                   | 30%  | 10%  | 50% | 30% | 10% | 50%                             | 30% | 10% | 50% | 30% | 10% | 50% | 30% | 10% | 0   |
| ρfc  | 20%                   |      |      | 20% |     |     | 20%                             |     |     | 20% |     |     | 20% |     |     | 0   |
| RCR  | RCR:Room Cavity Ratio |      |      |     |     |     | Coefficients of Utilization(CU) |     |     |     |     |     |     |     |     |     |
| 0.0  | 1.06                  | 1.06 | 1.06 | .97 | .97 | .97 | .80                             | .80 | .80 | .65 | .65 | .65 | .51 | .51 | .51 | .44 |
| 1.0  | .88                   | .83  | .78  | .80 | .76 | .72 | .66                             | .62 | .59 | .52 | .50 | .48 | .40 | .38 | .37 | .31 |
| 2.0  | .75                   | .68  | .62  | .69 | .62 | .57 | .56                             | .51 | .47 | .45 | .41 | .38 | .34 | .31 | .29 | .24 |
| 3.0  | .65                   | .57  | .51  | .60 | .52 | .47 | .49                             | .43 | .39 | .39 | .35 | .31 | .29 | .26 | .24 | .19 |
| 4.0  | .58                   | .49  | .42  | .53 | .45 | .39 | .43                             | .37 | .32 | .34 | .30 | .26 | .26 | .23 | .20 | .16 |
| 5.0  | .51                   | .42  | .36  | .47 | .39 | .33 | .38                             | .32 | .28 | .31 | .26 | .22 | .23 | .20 | .17 | .14 |
| 6.0  | .46                   | .37  | .31  | .42 | .34 | .28 | .34                             | .28 | .24 | .27 | .23 | .19 | .21 | .18 | .15 | .12 |
| 7.0  | .41                   | .33  | .27  | .38 | .30 | .25 | .31                             | .25 | .21 | .25 | .20 | .17 | .19 | .16 | .13 | .10 |
| 8.0  | .37                   | .29  | .23  | .34 | .27 | .22 | .28                             | .22 | .18 | .23 | .18 | .15 | .18 | .14 | .12 | .09 |
| 9.0  | .34                   | .26  | .21  | .31 | .24 | .19 | .26                             | .20 | .16 | .21 | .17 | .13 | .16 | .13 | .11 | .08 |
| 10.0 | .31                   | .23  | .19  | .28 | .22 | .17 | .24                             | .18 | .15 | .19 | .15 | .12 | .15 | .12 | .10 | .07 |



C Range: 0 - 360DEG  
 C Interval: 22.5DEG  
 Test Speed: HIGH  
 Temperature:25.2°C  
 Operators:Dano  
 Test Date:2023-06-13

γ Range: 0 - 180DEG  
 γ Interval: 1.0DEG  
 Test System:EVERFINE GO-R5000\_V2 SYSTEM V2.00.459  
 Humidity:55.3%  
 Test Distance:2.900m [K=0.8810]  
 Remarks:

WEC AND CCEC

|   |       |                  |
|---|-------|------------------|
| Test:U:119.9V I:0.3199A P:37.92W PF:0.9892 Freq:60.01Hz<br>Lamp Flux:2548.42x1 lm |       |                  |
| NAME: PT07-44-40S-952C5-MVTD-SB002 4000K  | TYPE: | WEIGHT:          |
| SPEC.:  | DIM.: | SERIAL No.:      |
| MFR.: FOSHAN LEDKEY LIGHTING CO.,LTD.   | SUR.: | Shielding Angle: |

| ρ <sub>cc</sub> | 80%                   |      |      | 70%  |      |      | 50%                             |      |      | 30%  |      |      | 10%  |      |      | 0 |
|-----------------|-----------------------|------|------|------|------|------|---------------------------------|------|------|------|------|------|------|------|------|---|
| ρ <sub>w</sub>  | 50%                   | 30%  | 10%  | 50%  | 30%  | 10%  | 50%                             | 30%  | 10%  | 50%  | 30%  | 10%  | 50%  | 30%  | 10%  | 0 |
| ρ <sub>fc</sub> | 20%                   |      |      | 20%  |      |      | 20%                             |      |      | 20%  |      |      | 20%  |      |      | 0 |
| RCR             | RCR:Room Cavity Ratio |      |      |      |      |      | Wall Exitance Coefficients(WEC) |      |      |      |      |      |      |      |      |   |
| 0.0             |                       |      |      |      |      |      |                                 |      |      |      |      |      |      |      |      |   |
| 1.0             | .362                  | .206 | .065 | .338 | .193 | .061 | .293                            | .168 | .054 | .251 | .145 | .047 | .213 | .124 | .040 |   |
| 2.0             | .308                  | .169 | .052 | .286 | .158 | .049 | .245                            | .136 | .042 | .207 | .116 | .036 | .172 | .097 | .031 |   |
| 3.0             | .272                  | .145 | .043 | .252 | .135 | .041 | .215                            | .116 | .035 | .180 | .099 | .030 | .148 | .082 | .025 |   |
| 4.0             | .245                  | .127 | .037 | .227 | .119 | .035 | .192                            | .102 | .030 | .160 | .086 | .026 | .130 | .071 | .022 |   |
| 5.0             | .223                  | .114 | .033 | .206 | .106 | .031 | .174                            | .091 | .027 | .145 | .076 | .023 | .117 | .063 | .019 |   |
| 6.0             | .205                  | .103 | .029 | .189 | .096 | .028 | .160                            | .082 | .024 | .132 | .069 | .020 | .107 | .056 | .017 |   |
| 7.0             | .189                  | .094 | .027 | .175 | .087 | .025 | .148                            | .075 | .021 | .122 | .063 | .018 | .098 | .051 | .015 |   |
| 8.0             | .176                  | .086 | .024 | .162 | .080 | .023 | .137                            | .068 | .020 | .113 | .057 | .017 | .091 | .047 | .014 |   |
| 9.0             | .164                  | .079 | .022 | .152 | .074 | .021 | .128                            | .063 | .018 | .106 | .053 | .015 | .085 | .043 | .012 |   |
| 10.0            | .154                  | .074 | .020 | .142 | .069 | .019 | .120                            | .059 | .017 | .099 | .049 | .014 | .079 | .040 | .011 |   |

| ρ <sub>cc</sub> | 80%                   |      |      | 70%  |      |      | 50%  |      |      | 30%  |      |      | 10%  |      |      | 0 |
|-----------------|-----------------------|------|------|------|------|------|--|------|------|------|------|------|------|------|------|---|
| ρ <sub>w</sub>  | 50%                   | 30%  | 10%  | 50%  | 30%  | 10%  | 50%  | 30%  | 10%  | 50%  | 30%  | 10%  | 50%  | 30%  | 10%  | 0 |
| ρ <sub>fc</sub> | 20%                   |      |      | 20%  |      |      | 20%  |      |      | 20%  |      |      | 20%  |      |      | 0 |
| RCR             | RCR:Room Cavity Ratio |      |      |      |      |      | Ceiling Cavity Exitance Coefficients(CCEC) |      |      |      |      |      |      |      |      |   |
| 0.0             | .614                  | .614 | .614 | .525 | .525 | .525 | .358                                       | .358 | .358 | .206 | .206 | .206 | .066 | .066 | .066 |   |
| 1.0             | .611                  | .583 | .557 | .523 | .500 | .480 | .358                                       | .344 | .332 | .206 | .199 | .193 | .066 | .064 | .062 |   |
| 2.0             | .604                  | .562 | .526 | .518 | .483 | .455 | .355                                       | .335 | .317 | .205 | .195 | .186 | .066 | .063 | .061 |   |
| 3.0             | .597                  | .546 | .506 | .512 | .471 | .439 | .351                                       | .328 | .308 | .203 | .191 | .181 | .065 | .062 | .059 |   |
| 4.0             | .590                  | .535 | .493 | .506 | .462 | .428 | .348                                       | .322 | .302 | .201 | .189 | .178 | .065 | .061 | .059 |   |
| 5.0             | .583                  | .526 | .484 | .501 | .455 | .421 | .345                                       | .318 | .297 | .200 | .187 | .176 | .064 | .061 | .058 |   |
| 6.0             | .576                  | .519 | .477 | .495 | .449 | .416 | .342                                       | .314 | .294 | .198 | .185 | .175 | .064 | .060 | .058 |   |
| 7.0             | .570                  | .513 | .472 | .490 | .444 | .412 | .339                                       | .311 | .292 | .197 | .184 | .174 | .064 | .060 | .057 |   |
| 8.0             | .564                  | .507 | .469 | .485 | .440 | .409 | .336                                       | .309 | .290 | .195 | .182 | .173 | .063 | .060 | .057 |   |
| 9.0             | .558                  | .503 | .466 | .481 | .437 | .406 | .333                                       | .307 | .289 | .194 | .181 | .172 | .063 | .059 | .057 |   |
| 10.0            | .553                  | .499 | .464 | .476 | .434 | .405 | .331                                       | .305 | .287 | .193 | .180 | .172 | .063 | .059 | .057 |   |

C Range: 0 - 360DEG  
 C Interval: 22.5DEG  
 Test Speed: HIGH  
 Temperature:25.2℃  
 Operators:Dano  
 Test Date:2023-06-13

γ Range: 0 - 180DEG  
 γ Interval: 1.0DEG  
 Test System:EVERFINE GO-R5000\_V2 SYSTEM V2.00.459  
 Humidity:55.3%  
 Test Distance:2.900m [K=0.8810]  
 Remarks:

UGR(Unified Glare Rating) Table

|   |                  |      |      |      |       |                |      |                  |      |      |
|---|------------------|------|------|------|-------|----------------|------|------------------|------|------|
| Test:U:119.9V I:0.3199A P:37.92W PF:0.9892 Freq:60.01Hz |                  |      |      |      |       |                |      |                  |      |      |
| Lamp Flux:2548.42x1 lm                                  |                  |      |      |      |       |                |      |                  |      |      |
| NAME: PT07-44-40S-952C5-MVTD-SB002 4000K                |                  |      |      |      | TYPE: |                |      | WEIGHT:          |      |      |
| SPEC.:  |                  |      |      |      | DIM.: |                |      | SERIAL No.:      |      |      |
| MFR.: FOSHAN LEDKEY LIGHTING CO.,LTD.                   |                  |      |      |      | SUR.: |                |      | Shielding Angle: |      |      |
| ceiling/cavity  | 0.7              | 0.7  | 0.5  | 0.5  | 0.3   | 0.7            | 0.7  | 0.5              | 0.5  | 0.3  |
| walls   | 0.5              | 0.3  | 0.5  | 0.3  | 0.3   | 0.5            | 0.3  | 0.5              | 0.3  | 0.3  |
| working plane   | 0.2              | 0.2  | 0.2  | 0.2  | 0.2   | 0.2            | 0.2  | 0.2              | 0.2  | 0.2  |
| Room dimensions   | Viewed crosswise |      |      |      |       | Viewed endwise |      |                  |      |      |
| x = 2H y = 2H   | 0.5              | 2.4  | 2.4  | 4.3  | 6.9   | 5.8            | 7.7  | 7.7              | 9.6  | 12.2 |
| 3H  | 5.8              | 7.5  | 7.7  | 9.4  | 12.1  | 7.2            | 8.9  | 9.1              | 10.9 | 13.5 |
| 4H  | 8.5              | 10.1 | 10.5 | 12.1 | 14.7  | 7.7            | 9.3  | 9.6              | 11.3 | 13.9 |
| 6H  | 11.4             | 12.9 | 13.4 | 14.9 | 17.6  | 8.0            | 9.5  | 9.9              | 11.5 | 14.1 |
| 8H  | 12.9             | 14.3 | 14.9 | 16.4 | 19.0  | 8.0            | 9.4  | 10.0             | 11.5 | 14.1 |
| 12H   | 14.6             | 15.9 | 16.6 | 18.0 | 20.7  | 8.0            | 9.3  | 10.0             | 11.4 | 14.1 |
| 4H 2H   | 0.5              | 2.1  | 2.5  | 4.1  | 6.7   | 6.9            | 8.5  | 8.8              | 10.4 | 13.1 |
| 3H  | 6.1              | 7.5  | 8.1  | 9.6  | 12.2  | 8.7            | 10.1 | 10.7             | 12.2 | 14.8 |
| 4H  | 9.2              | 10.4 | 11.2 | 12.5 | 15.2  | 9.5            | 10.8 | 11.5             | 12.8 | 15.5 |
| 6H  | 12.3             | 13.4 | 14.4 | 15.5 | 18.3  | 10.1           | 11.2 | 12.1             | 13.3 | 16.0 |
| 8H  | 14.0             | 15.0 | 16.0 | 17.1 | 19.9  | 10.2           | 11.3 | 12.3             | 13.3 | 16.1 |
| 12H   | 15.8             | 16.7 | 17.9 | 18.8 | 21.6  | 10.3           | 11.2 | 12.3             | 13.3 | 16.1 |
| 8H 4H   | 9.3              | 10.4 | 11.4 | 12.4 | 15.2  | 11.1           | 12.2 | 13.2             | 14.2 | 17.0 |
| 6H  | 12.8             | 13.7 | 14.9 | 15.9 | 18.7  | 12.2           | 13.1 | 14.3             | 15.2 | 18.0 |
| 8H  | 14.7             | 15.5 | 16.9 | 17.7 | 20.5  | 12.7           | 13.5 | 14.8             | 15.6 | 18.4 |
| 12H   | 16.9             | 17.6 | 19.0 | 19.7 | 22.6  | 13.0           | 13.7 | 15.1             | 15.8 | 18.7 |
| 12H 4H  | 9.2              | 10.2 | 11.3 | 12.3 | 15.1  | 11.7           | 12.6 | 13.8             | 14.8 | 17.6 |
| 6H  | 12.9             | 13.7 | 15.0 | 15.8 | 18.7  | 13.1           | 13.9 | 15.2             | 16.0 | 18.9 |
| 8H  | 14.9             | 15.6 | 17.1 | 17.8 | 20.7  | 13.8           | 14.5 | 16.0             | 16.7 | 19.6 |
| CIE190: 2010  |                  |      |      |      |       |                |      |                  |      |      |
|   |                  |      |      |      |       |                |      |                  |      |      |

CIE190: 2010  
Area: 0.36 m2

C Range: 0 - 360DEG  
C Interval: 22.5DEG  
Test Speed: HIGH  
Temperature:25.2℃  
Operators:Dano  
Test Date:2023-06-13

γ Range: 0 - 180DEG  
γ Interval: 1.0DEG  
Test System:EVERFINE GO-R5000\_V2 SYSTEM V2.00.459  
Humidity:55.3%  
Test Distance:2.900m [K=0.8810]  
Remarks:

**UTILIZATION FACTORS TABLE**

|   |       |                  |
|---|-------|------------------|
| Test:U:119.9V I:0.3199A P:37.92W PF:0.9892 Freq:60.01Hz<br>Lamp Flux:2548.42x1 lm |       |                  |
| NAME: PT07-44-40S-952C5-MVTD-SB002 4000K  | TYPE: | WEIGHT:          |
| SPEC.:  | DIM.: | SERIAL No.:      |
| MFR.: FOSHAN LEDKEY LIGHTING CO.,LTD.   | SUR.: | Shielding Angle: |

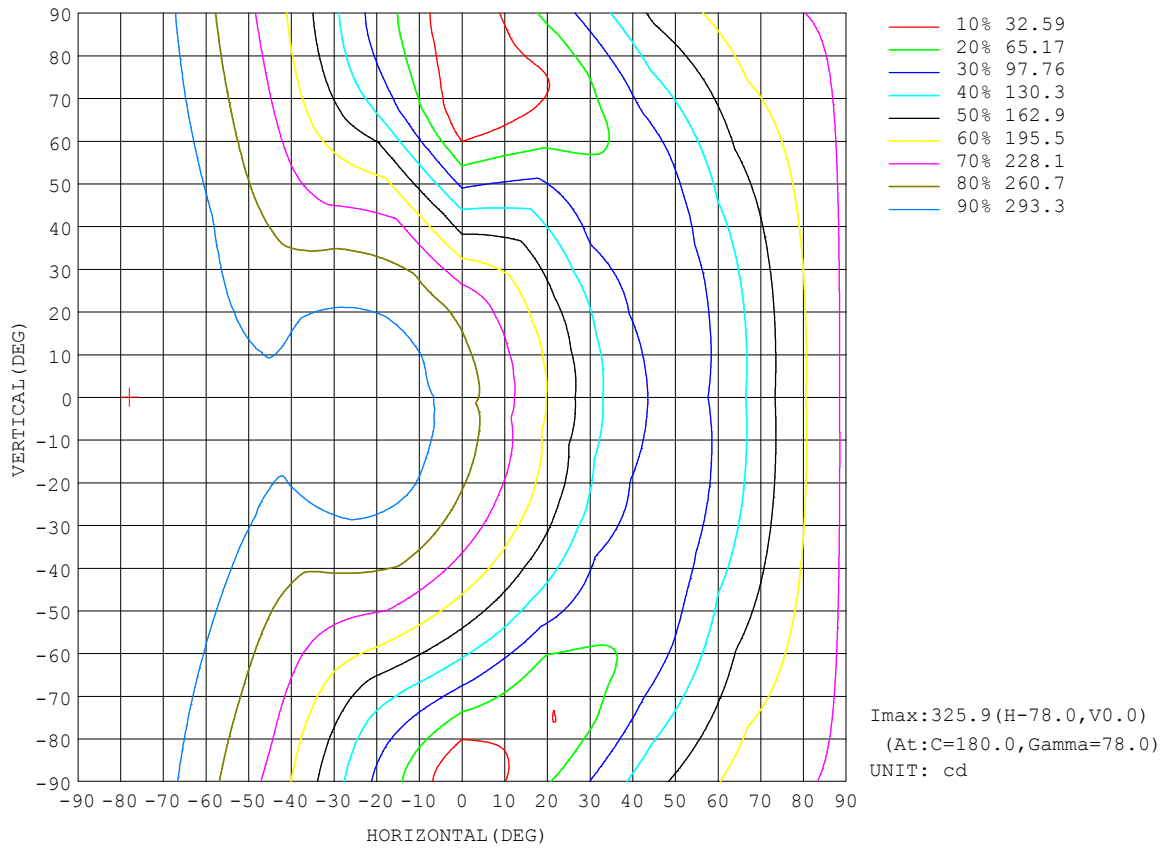
| REFLECTANCE                      |  |     |           |     |     |     |               |     |     |        |
|----------------------------------|--|-----|-----------|-----|-----|-----|---------------|-----|-----|--------|
| Ceiling                          | 0.8  | 0.8 | 0.8       | 0.7 | 0.7 | 0.7 | 0.5           | 0.5 | 0.5 | 0      |
| Walls                            | 0.7  | 0.5 | 0.3       | 0.7 | 0.5 | 0.3 | 0.7           | 0.5 | 0.3 | 0      |
| Working plane                    | 0.2  | 0.2 | 0.2       | 0.2 | 0.2 | 0.2 | 0.2           | 0.2 | 0.2 | 0      |
| ROOM INDEX                       | UTILIZATION FACTORS (PERCENT) $k(RI) \times RCR = 5$ |     |           |     |     |     |               |     |     |        |
| k = 0.60                         | 38   | 26  | 20        | 36  | 25  | 19  | 32            | 23  | 17  | 10     |
| 0.80                             | 47   | 34  | 26        | 44  | 32  | 25  | 38            | 29  | 23  | 13     |
| 1.00                             | 54   | 41  | 33        | 50  | 39  | 31  | 43            | 35  | 28  | 16     |
| 1.25                             | 61   | 48  | 39        | 56  | 45  | 37  | 48            | 39  | 32  | 18     |
| 1.50                             | 66   | 53  | 44        | 61  | 50  | 42  | 51            | 43  | 36  | 20     |
| 2.00                             | 73   | 62  | 53        | 67  | 57  | 49  | 57            | 49  | 43  | 23     |
| 2.50                             | 78   | 67  | 59        | 72  | 62  | 55  | 60            | 53  | 47  | 25     |
| 3.00                             | 82   | 72  | 64        | 75  | 66  | 59  | 62            | 56  | 51  | 27     |
| 4.00                             | 87   | 78  | 71        | 79  | 72  | 66  | 66            | 60  | 56  | 30     |
| 5.00                             | 90   | 82  | 76        | 82  | 76  | 70  | 68            | 63  | 59  | 32     |
| ROOM INDEX                       | UF(total)  |     |           |     |     |     |               |     |     | Direct |
| According to DIN EN 13032-2 2004 |  |     | Suspended |     |     |     | SHRNOM = 1.25 |     |     |        |

C Range: 0 - 360DEG  
 C Interval: 22.5DEG  
 Test Speed: HIGH  
 Temperature:25.2°C  
 Operators:Dano  
 Test Date:2023-06-13

$\gamma$  Range: 0 - 180DEG  
 $\gamma$  Interval: 1.0DEG  
 Test System:EVERFINE GO-R5000\_V2 SYSTEM V2.00.459  
 Humidity:55.3%  
 Test Distance:2.900m [K=0.8810]  
 Remarks:

ISOCANDELA DIAGRAM

|   |       |                  |
|---|-------|------------------|
| Test:U:119.9V I:0.3199A P:37.92W PF:0.9892 Freq:60.01Hz<br>Lamp Flux:2548.42x1 lm |       |                  |
| NAME: PT07-44-40S-952C5-MVTD-SB002 4000K  | TYPE: | WEIGHT:          |
| SPEC.:  | DIM.: | SERIAL No.:      |
| MFR.: FOSHAN LEDKEY LIGHTING CO.,LTD.   | SUR.: | Shielding Angle: |



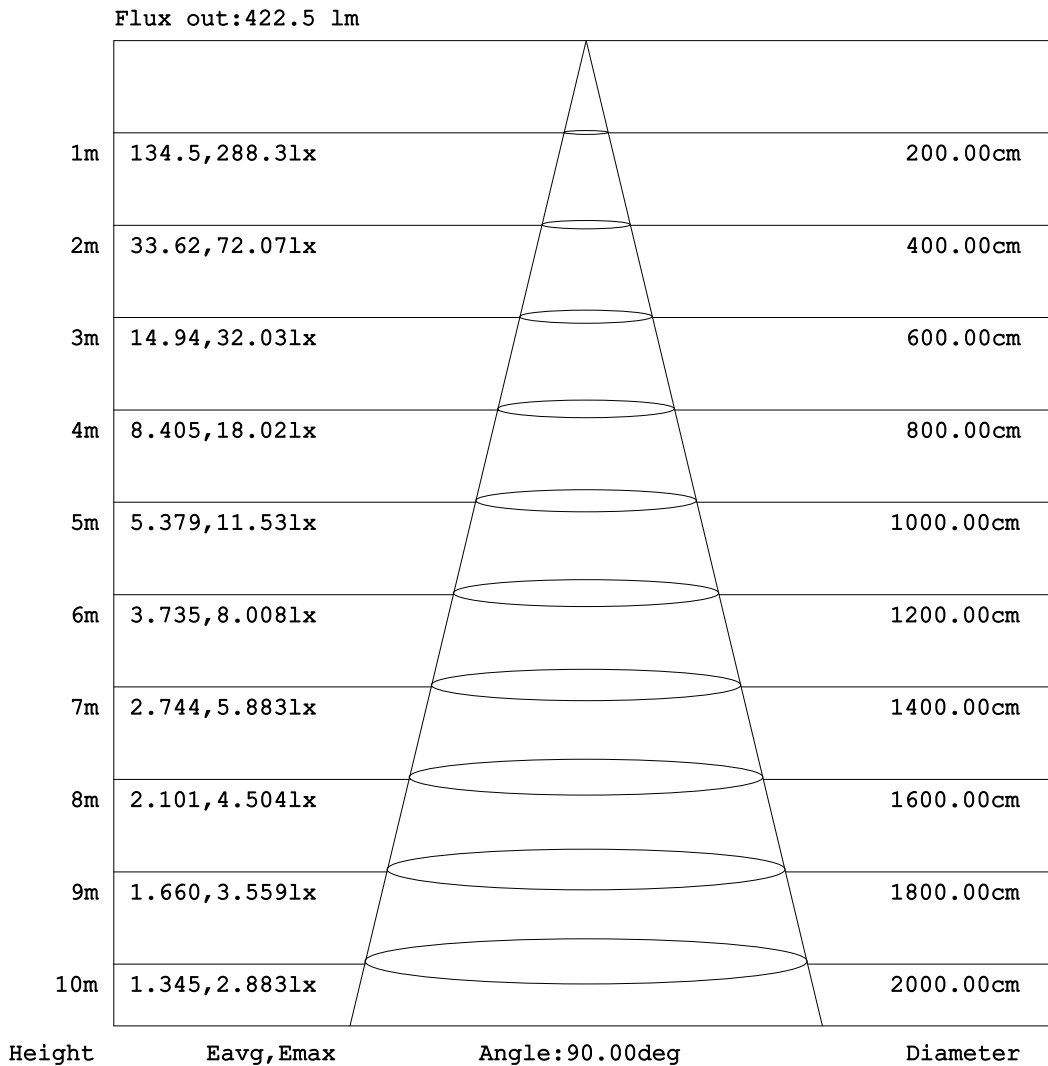
C Range: 0 - 360DEG  
C Interval: 22.5DEG  
Test Speed: HIGH  
Temperature: 25.2°C  
Operators: Dano  
Test Date: 2023-06-13

γ Range: 0 - 180DEG  
γ Interval: 1.0DEG  
Test System: EVERFINE GO-R5000\_V2 SYSTEM V2.00.459  
Humidity: 55.3%  
Test Distance: 2.900m [K=0.8810]  
Remarks:



**AAI Figure**

|   |       |                  |
|---|-------|------------------|
| Test:U:119.9V I:0.3199A P:37.92W PF:0.9892 Freq:60.01Hz<br>Lamp Flux:2548.42x1 lm |       |                  |
| NAME: PT07-44-40S-952C5-MVTD-SB002 4000K  | TYPE: | WEIGHT:          |
| SPEC.:  | DIM.: | SERIAL No.:      |
| MFR.: FOSHAN LEDKEY LIGHTING CO.,LTD.   | SUR.: | Shielding Angle: |



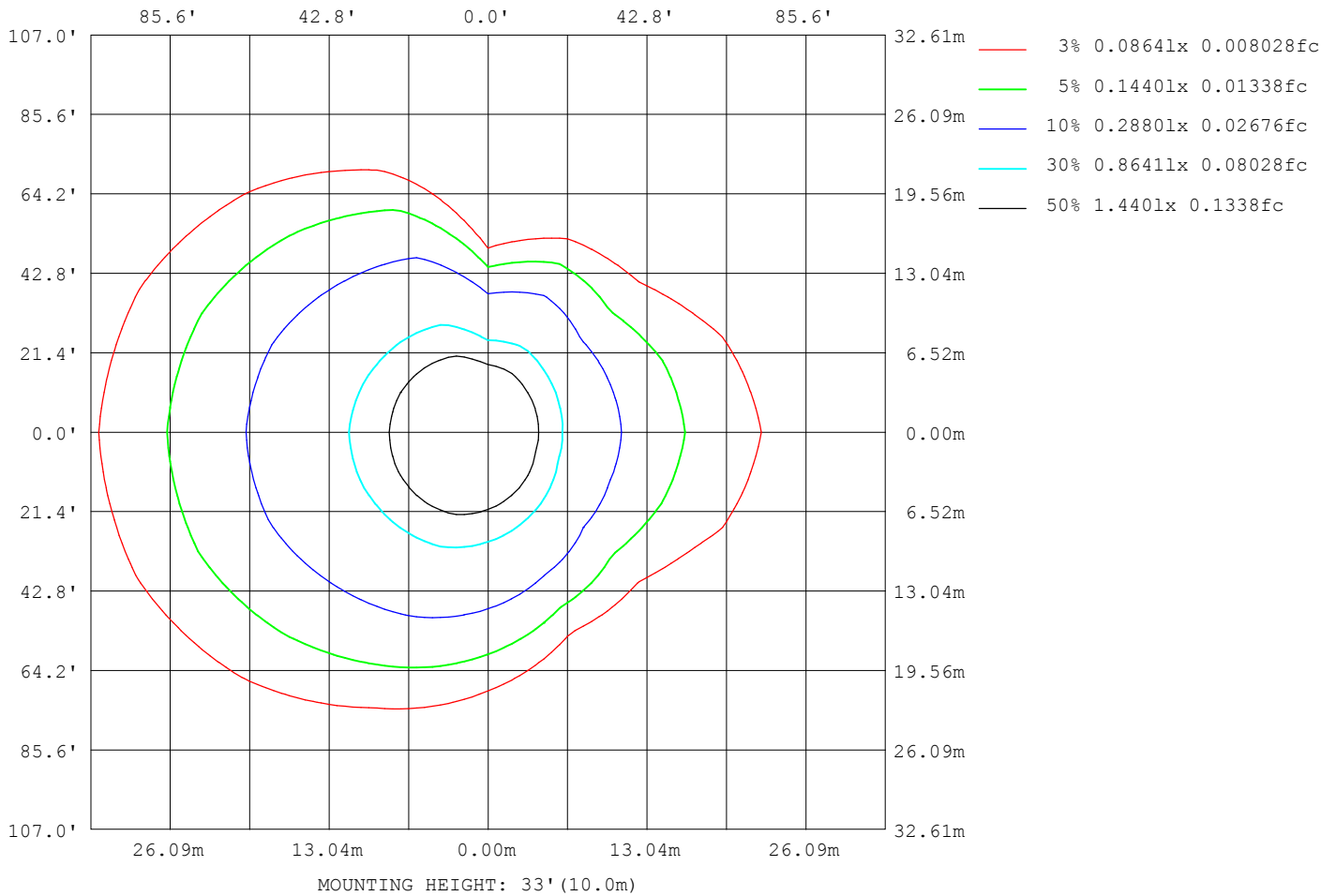
Note:The Curves indicate the illuminated area and the average illumination when the luminaire is at different distance.

C Range: 0 - 360DEG  
 C Interval: 22.5DEG  
 Test Speed: HIGH  
 Temperature:25.2℃  
 Operators:Dano  
 Test Date:2023-06-13

γ Range: 0 - 180DEG  
 γ Interval: 1.0DEG  
 Test System:EVERFINE GO-R5000\_V2 SYSTEM V2.00.459  
 Humidity:55.3%  
 Test Distance:2.900m [K=0.8810]  
 Remarks:

ISOLUX DIAGRAM

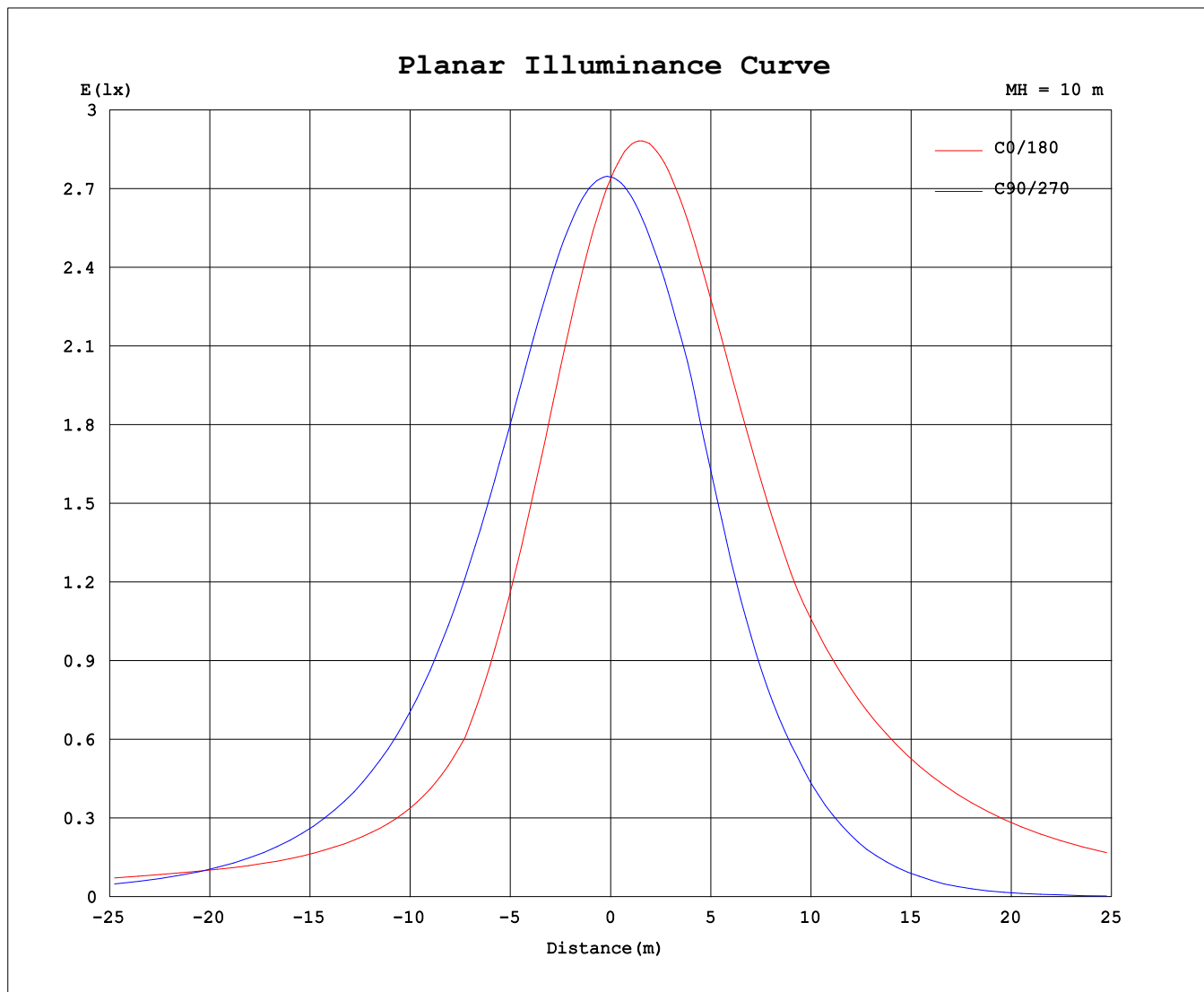
|   |       |                  |
|---|-------|------------------|
| Test:U:119.9V I:0.3199A P:37.92W PF:0.9892 Freq:60.01Hz<br>Lamp Flux:2548.42x1 lm |       |                  |
| NAME: PT07-44-40S-952C5-MVTD-SB002 4000K  | TYPE: | WEIGHT:          |
| SPEC.:  | DIM.: | SERIAL No.:      |
| MFR.: FOSHAN LEDKEY LIGHTING CO.,LTD.   | SUR.: | Shielding Angle: |



C Range: 0 - 360DEG  
C Interval: 22.5DEG  
Test Speed: HIGH  
Temperature:25.2°C  
Operators:Dano  
Test Date:2023-06-13

γ Range: 0 - 180DEG  
γ Interval: 1.0DEG  
Test System:EVERFINE GO-R5000\_V2 SYSTEM V2.00.459  
Humidity:55.3%  
Test Distance:2.900m [K=0.8810]  
Remarks:

Planar Illuminance Curve



C Range: 0 - 360DEG  
 C Interval: 22.5DEG  
 Test Speed: HIGH  
 Temperature: 25.2°C  
 Operators: Dano  
 Test Date: 2023-06-13

γ Range: 0 - 180DEG  
 γ Interval: 1.0DEG  
 Test System: EVERFINE GO-R5000\_V2 SYSTEM V2.00.459  
 Humidity: 55.3%  
 Test Distance: 2.900m [K=0.8810]  
 Remarks:

LUMINOUS DISTRIBUTION INTENSITY DATA

|   |       |                  |
|---|-------|------------------|
| Test:U:119.9V I:0.3199A P:37.92W PF:0.9892 Freq:60.01Hz<br>Lamp Flux:2548.42x1 lm |       |                  |
| NAME: PT07-44-40S-952C5-MVTD-SB002 4000K  | TYPE: | WEIGHT:          |
| SPEC.:  | DIM.: | SERIAL No.:      |
| MFR.: FOSHAN LEDKEY LIGHTING CO.,LTD.   | SUR.: | Shielding Angle: |

Table--1

UNIT: cd

| C (DEG)<br>γ (DEG) | 0    | 22.5 | 45   | 67.5 | 90   | 112.5 | 135 | 157.5 | 180 | 202.5 | 225 | 247.5 | 270  | 292.5 | 315  | 337.5 |  |  |  |
|--------------------|------|------|------|------|------|-------|-----|-------|-----|-------|-----|-------|------|-------|------|-------|--|--|--|
| 0                  | 274  | 274  | 274  | 274  | 274  | 274   | 274 | 274   | 274 | 274   | 274 | 274   | 274  | 274   | 274  | 274   |  |  |  |
| 5                  | 257  | 258  | 263  | 268  | 274  | 280   | 285 | 288   | 289 | 288   | 283 | 278   | 272  | 265   | 261  | 259   |  |  |  |
| 10                 | 238  | 240  | 249  | 260  | 273  | 285   | 294 | 300   | 302 | 299   | 290 | 279   | 267  | 256   | 246  | 240   |  |  |  |
| 15                 | 217  | 220  | 233  | 250  | 269  | 287   | 300 | 309   | 311 | 307   | 294 | 278   | 261  | 243   | 229  | 220   |  |  |  |
| 20                 | 194  | 198  | 216  | 238  | 263  | 288   | 304 | 314   | 317 | 312   | 295 | 274   | 252  | 229   | 211  | 199   |  |  |  |
| 25                 | 170  | 175  | 197  | 224  | 255  | 287   | 305 | 316   | 319 | 313   | 293 | 269   | 234  | 214   | 190  | 176   |  |  |  |
| 30                 | 146  | 151  | 176  | 208  | 244  | 282   | 303 | 315   | 318 | 312   | 289 | 262   | 209  | 196   | 169  | 152   |  |  |  |
| 35                 | 120  | 126  | 154  | 190  | 232  | 275   | 297 | 310   | 313 | 307   | 282 | 251   | 181  | 177   | 147  | 127   |  |  |  |
| 40                 | 104  | 107  | 130  | 170  | 217  | 265   | 289 | 303   | 305 | 299   | 272 | 239   | 152  | 157   | 123  | 105   |  |  |  |
| 45                 | 95.8 | 95.5 | 107  | 149  | 200  | 251   | 277 | 292   | 300 | 288   | 259 | 225   | 123  | 136   | 99.3 | 94.0  |  |  |  |
| 50                 | 92.8 | 89.4 | 88.7 | 125  | 180  | 235   | 263 | 292   | 303 | 285   | 244 | 208   | 90.7 | 114   | 83.0 | 88.4  |  |  |  |
| 55                 | 94.8 | 88.6 | 76.7 | 102  | 159  | 217   | 251 | 293   | 307 | 287   | 232 | 190   | 60.0 | 90.4  | 73.7 | 88.3  |  |  |  |
| 60                 | 103  | 93.0 | 69.9 | 76.5 | 135  | 196   | 245 | 297   | 314 | 290   | 227 | 170   | 31.7 | 66.9  | 70.2 | 93.4  |  |  |  |
| 65                 | 123  | 110  | 68.7 | 53.6 | 110  | 173   | 241 | 300   | 319 | 294   | 225 | 148   | 13.5 | 47.0  | 72.6 | 109   |  |  |  |
| 70                 | 147  | 133  | 76.9 | 39.0 | 84.8 | 151   | 238 | 303   | 323 | 298   | 224 | 128   | 6.78 | 36.5  | 84.9 | 132   |  |  |  |
| 75                 | 171  | 155  | 96.8 | 32.1 | 58.3 | 134   | 235 | 304   | 325 | 301   | 223 | 115   | 6.53 | 34.2  | 107  | 156   |  |  |  |
| 80                 | 193  | 177  | 117  | 38.7 | 33.3 | 121   | 232 | 303   | 326 | 301   | 222 | 106   | 5.13 | 45.4  | 129  | 178   |  |  |  |
| 85                 | 214  | 197  | 136  | 54.2 | 12.1 | 111   | 227 | 300   | 325 | 300   | 219 | 99.3  | 2.33 | 63.6  | 150  | 200   |  |  |  |
| 90                 | 234  | 216  | 154  | 70.1 | 1.54 | 103   | 221 | 296   | 321 | 297   | 216 | 96.6  | 0.58 | 82.3  | 170  | 220   |  |  |  |
| 95                 | 252  | 234  | 170  | 85.9 | 7.46 | 101   | 215 | 290   | 316 | 293   | 213 | 98.1  | 5.44 | 100   | 188  | 239   |  |  |  |
| 100                | 268  | 249  | 186  | 101  | 26.0 | 106   | 210 | 283   | 310 | 288   | 211 | 108   | 24.9 | 118   | 205  | 255   |  |  |  |
| 105                | 281  | 262  | 199  | 115  | 49.6 | 124   | 209 | 278   | 304 | 284   | 212 | 125   | 50.7 | 133   | 220  | 269   |  |  |  |
| 110                | 292  | 272  | 211  | 128  | 76.0 | 139   | 217 | 275   | 300 | 281   | 221 | 142   | 79.7 | 147   | 232  | 280   |  |  |  |
| 115                | 301  | 280  | 221  | 139  | 104  | 154   | 230 | 280   | 299 | 283   | 234 | 157   | 110  | 159   | 241  | 289   |  |  |  |
| 120                | 306  | 285  | 228  | 154  | 131  | 167   | 241 | 289   | 308 | 293   | 245 | 170   | 140  | 173   | 248  | 295   |  |  |  |
| 125                | 307  | 287  | 232  | 167  | 158  | 182   | 248 | 295   | 314 | 300   | 253 | 185   | 168  | 184   | 252  | 297   |  |  |  |
| 130                | 306  | 286  | 235  | 187  | 184  | 199   | 254 | 298   | 316 | 304   | 258 | 204   | 194  | 203   | 253  | 295   |  |  |  |
| 135                | 300  | 282  | 240  | 208  | 208  | 217   | 256 | 298   | 316 | 305   | 261 | 223   | 219  | 220   | 256  | 291   |  |  |  |
| 140                | 292  | 278  | 249  | 226  | 229  | 234   | 260 | 295   | 311 | 303   | 264 | 242   | 241  | 234   | 257  | 284   |  |  |  |
| 145                | 289  | 281  | 257  | 241  | 239  | 252   | 267 | 289   | 304 | 299   | 273 | 260   | 255  | 248   | 254  | 283   |  |  |  |
| 150                | 288  | 284  | 261  | 248  | 237  | 266   | 277 | 289   | 298 | 297   | 283 | 276   | 244  | 255   | 266  | 282   |  |  |  |
| 155                | 291  | 290  | 260  | 230  | 228  | 278   | 285 | 294   | 298 | 299   | 292 | 290   | 238  | 222   | 270  | 277   |  |  |  |
| 160                | 297  | 293  | 242  | 209  | 217  | 277   | 295 | 298   | 302 | 304   | 300 | 301   | 249  | 210   | 242  | 279   |  |  |  |
| 165                | 299  | 271  | 219  | 206  | 201  | 245   | 296 | 305   | 307 | 309   | 309 | 301   | 237  | 213   | 200  | 242   |  |  |  |
| 170                | 298  | 206  | 220  | 222  | 220  | 225   | 279 | 300   | 303 | 310   | 298 | 282   | 227  | 217   | 204  | 202   |  |  |  |
| 175                | 237  | 192  | 231  | 237  | 240  | 232   | 243 | 256   | 258 | 284   | 260 | 247   | 235  | 240   | 231  | 220   |  |  |  |
| 180                | 92.2 | 211  | 236  | 252  | 256  | 251   | 226 | 204   | 105 | 86.6  | 213 | 232   | 250  | 255   | 248  | 231   |  |  |  |

C Range: 0 - 360DEG  
 C Interval: 22.5DEG  
 Test Speed: HIGH  
 Temperature:25.2℃  
 Operators:Dano  
 Test Date:2023-06-13

γ Range: 0 - 180DEG  
 γ Interval: 1.0DEG  
 Test System:EVERFINE GO-R5000\_V2 SYSTEM V2.00.459  
 Humidity:55.3%  
 Test Distance:2.900m [K=0.8810]  
 Remarks: