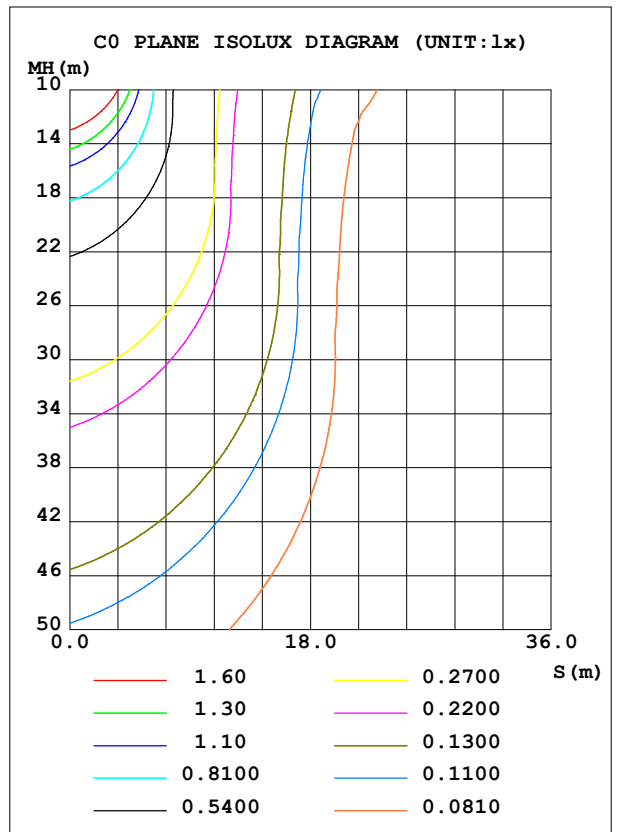
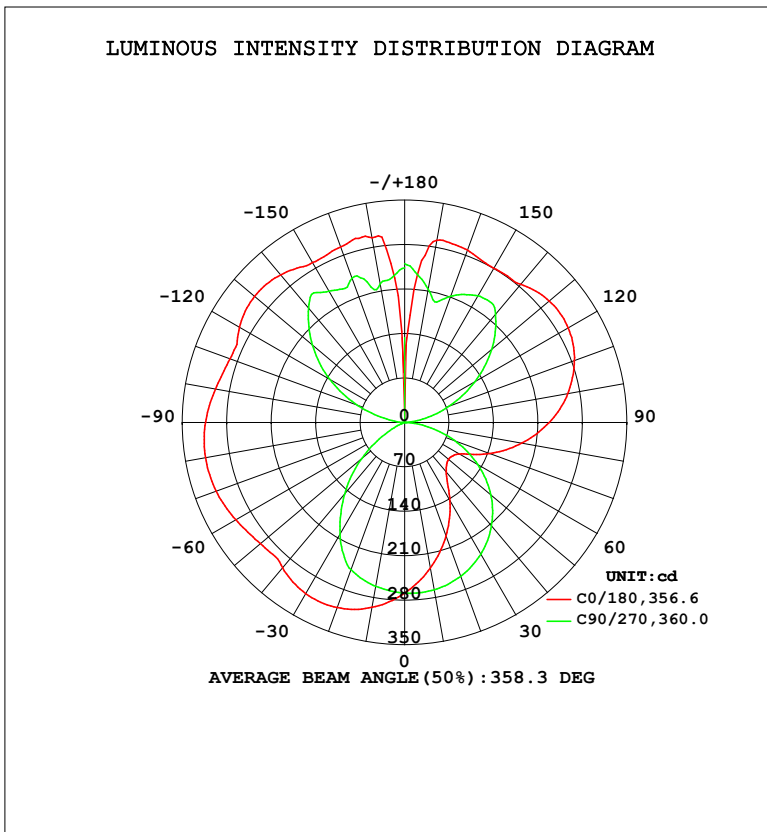


LUMINAIRE PHOTOMETRIC TEST REPORT

Test:U:119.9V I:0.3242A P:38.48W PF:0.9896 Freq:60.01Hz Lamp Flux:2489.93x1 lm		
NAME: PT07-44-40S-952C5-MVTD-SB002 3500K	TYPE:	WEIGHT:
SPEC.:	DIM.:	SERIAL No.:
MFR.: FOSHAN LEDKEY LIGHTING CO.,LTD.	SUR.:	Shielding Angle:

DATA OF LAMP		PHOTOMETRIC DATA			
MODEL		Imax (cd)	318.5	S/MH (C0/180)	1.68
NOMINAL POWER (W)		LOR (%)	100.0	S/MH (C90/270)	1.15
RATED VOLTAGE (V)	120	TOTAL FLUX (lm)	2489.9	$\eta$ UP, DN (C0-180)	27.1, 21.7
NOMINAL FLUX (lm)	2489.93	CIE CLASS	DIFFUSE	$\eta$ UP, DN (C180-360)	28.3, 22.8
LAMPS INSIDE	1	$\eta$ up (%)	55.5	CIBSE SHR NOM	1.25
TEST VOLTAGE (V)	120	$\eta$ down (%)	44.5	CIBSE SHR MAX	1.35



C Range: 0 - 360DEG  
 C Interval: 22.5DEG  
 Test Speed: HIGH  
 Temperature: 25.2°C  
 Operators: Dano  
 Test Date: 2023-06-13

$\gamma$  Range: 0 - 180DEG  
 $\gamma$  Interval: 1.0DEG  
 Test System: EVERFINE GO-R5000\_V2 SYSTEM V2.00.459  
 Humidity: 55.3%  
 Test Distance: 2.900m [K=0.8810]  
 Remarks:

ZONAL FLUX DIAGRAM

ZONAL FLUX DIAGRAM:

γ	C0	C45	C90	C135	C180	C225	C270	C315	γ	Φ zone	Φ total	%lum, lamp
10	233.1	244.7	267.5	288.3	295.5	284.0	262.0	241.2	0- 10	25.46	25.46	1.02,1.02
20	190.5	212.2	257.9	297.9	310.2	289.1	247.0	205.9	10- 20	73.14	98.60	3.96,3.96
30	142.9	173.0	239.7	296.4	311.2	283.0	204.0	165.2	20- 30	111.2	209.8	8.42,8.42
40	102.5	128.1	212.8	282.9	298.8	266.0	147.2	120.2	30- 40	133.8	343.5	13.8,13.8
50	90.60	87.12	177.1	257.7	296.8	239.1	87.93	81.05	40- 50	141.8	485.4	19.5,19.5
60	99.94	68.30	133.3	239.9	307.0	222.7	31.61	68.53	50- 60	143.5	628.9	25.3,25.3
70	143.0	74.57	83.72	233.1	315.9	219.0	6.720	83.09	60- 70	146.8	775.6	31.2,31.2
80	187.7	113.2	33.19	226.5	318.5	216.7	4.707	125.6	70- 80	158.8	934.4	37.5,37.5
90	227.7	149.4	1.578	215.8	313.5	211.1	0.5658	165.9	80- 90	173.8	1108	44.5,44.5
100	260.7	180.8	25.06	205.2	302.5	205.9	24.61	200.3	90-100	187.1	1295	52,52
110	284.5	205.4	73.67	211.7	292.9	216.0	77.97	226.4	100-110	200.9	1496	60.1,60.1
120	297.7	221.7	126.8	234.5	300.3	239.2	136.4	241.9	110-120	210.4	1707	68.5,68.5
130	297.5	228.7	179.0	247.1	308.8	252.0	189.5	246.3	120-130	209.0	1916	76.9,76.9
140	284.3	242.0	222.6	252.7	303.7	258.3	235.5	251.1	130-140	193.1	2109	84.7,84.7
150	280.8	253.6	230.6	269.4	290.9	276.3	238.7	259.1	140-150	163.8	2272	91.3,91.3
160	288.9	236.9	211.3	287.6	294.5	293.1	241.9	235.0	150-160	122.5	2395	96.2,96.2
170	291.2	215.4	213.7	272.8	295.2	291.1	222.0	199.4	160-170	72.24	2467	99.1,99.1
180	98.13	231.5	249.9	221.1	102.0	208.1	243.6	242.2	170-180	22.69	2490	100,100
DEG	LUMINOUS INTENSITY:cd									UNIT:lm		

Conical surface Flux(90deg): 414.06 lm

%lum = 16.6%

%lamp = 16.6%

Conical surface Flux(120deg): 628.89 lm

%lum = 25.3%

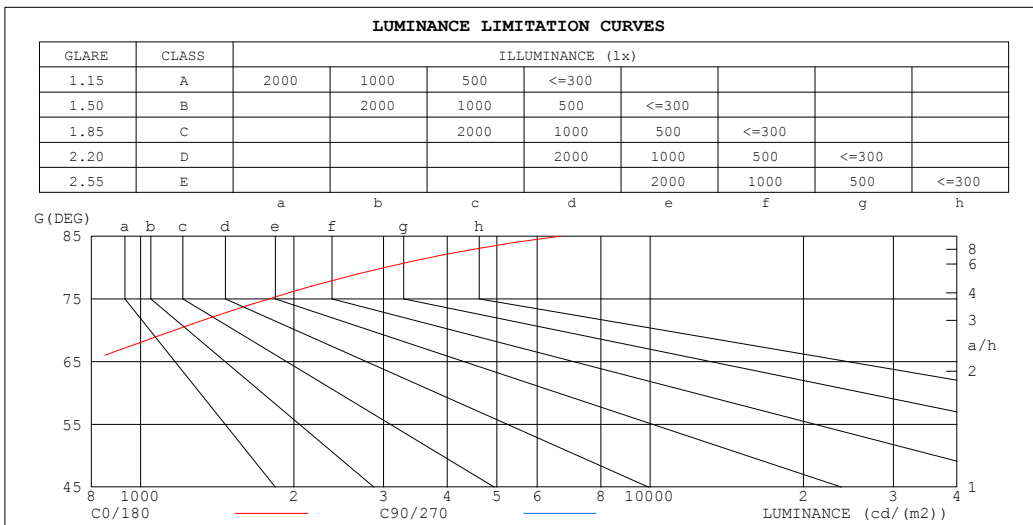
%lamp = 25.3%

C Range: 0 - 360DEG  
 C Interval: 22.5DEG  
 Test Speed: HIGH  
 Temperature:25.2℃  
 Operators:Dano  
 Test Date:2023-06-13

γ Range: 0 - 180DEG  
 γ Interval: 1.0DEG  
 Test System:EVERFINE GO-R5000\_V2 SYSTEM V2.00.459  
 Humidity:55.3%  
 Test Distance:2.900m [K=0.8810]  
 Remarks:

LUMINANCE LIMITATION CURVES

Test:U:119.9V I:0.3242A P:38.48W PF:0.9896 Freq:60.01Hz Lamp Flux:2489.93x1 lm		
NAME: PT07-44-40S-952C5-MVTD-SB002 3500K	TYPE:	WEIGHT:
SPEC.:	DIM.:	SERIAL No.:
MFR.: FOSHAN LEDKEY LIGHTING CO.,LTD.	SUR.:	Shielding Angle:



LUMINANCE cd/(m2)		
G (DEG)	C0/180	C90/270
85	6667	392
80	3014	532
75	1788	620
70	1166	681
65	789	719
60	557	742
55	449	758
50	393	767
45	370	771

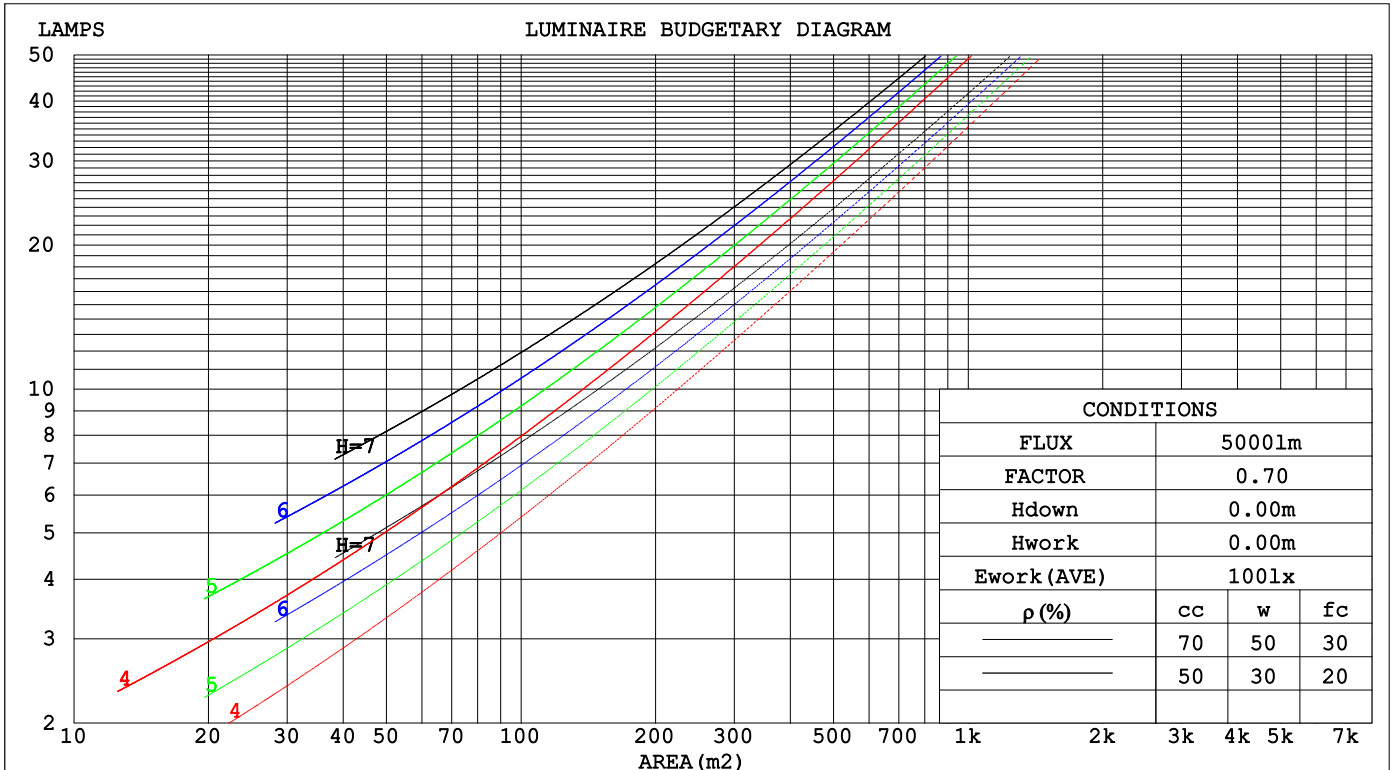
C Range: 0 - 360DEG  
 C Interval: 22.5DEG  
 Test Speed: HIGH  
 Temperature:25.2℃  
 Operators:Dano  
 Test Date:2023-06-13

γ Range: 0 - 180DEG  
 γ Interval: 1.0DEG  
 Test System:EVERFINE GO-R5000\_V2 SYSTEM V2.00.459  
 Humidity:55.3%  
 Test Distance:2.900m [K=0.8810]  
 Remarks:

**CU AND LUMINAIRE BUDGETARY ESTIMATE DIAGRAM**

Test:U:119.9V I:0.3242A P:38.48W PF:0.9896 Freq:60.01Hz Lamp Flux:2489.93x1 lm		
NAME: PT07-44-40S-952C5-MVTD-SB002 3500K	TYPE:	WEIGHT:
SPEC.:	DIM.:	SERIAL No.:
MFR.: FOSHAN LEDKEY LIGHTING CO.,LTD.	SUR.:	Shielding Angle:

$\rho_{cc}$	80%			70%			50%			30%			10%			0
$\rho_w$	50%	30%	10%	50%	30%	10%	50%	30%	10%	50%	30%	10%	50%	30%	10%	0
$\rho_{fc}$	20%			20%			20%			20%			20%			0
RCR	RCR:Room Cavity Ratio						Coefficients of Utilization(CU)									
0.0	1.06	1.06	1.06	.97	.97	.97	.80	.80	.80	.65	.65	.65	.51	.51	.51	.45
1.0	.88	.83	.78	.80	.76	.72	.66	.62	.59	.52	.50	.48	.40	.39	.37	.31
2.0	.75	.68	.62	.69	.62	.57	.56	.51	.47	.45	.41	.38	.34	.32	.29	.24
3.0	.65	.57	.51	.60	.52	.47	.49	.43	.39	.39	.35	.31	.30	.27	.24	.19
4.0	.58	.49	.42	.53	.45	.39	.43	.37	.32	.34	.30	.26	.26	.23	.20	.16
5.0	.51	.42	.36	.47	.39	.33	.38	.32	.28	.31	.26	.22	.23	.20	.17	.14
6.0	.46	.37	.31	.42	.34	.28	.34	.28	.24	.28	.23	.19	.21	.18	.15	.12
7.0	.41	.33	.27	.38	.30	.25	.31	.25	.21	.25	.20	.17	.19	.16	.13	.10
8.0	.37	.29	.23	.34	.27	.22	.28	.22	.18	.23	.18	.15	.18	.14	.12	.09
9.0	.34	.26	.21	.31	.24	.19	.26	.20	.16	.21	.17	.13	.16	.13	.11	.08
10.0	.31	.23	.19	.28	.22	.17	.24	.18	.15	.19	.15	.12	.15	.12	.10	.07



C Range: 0 - 360DEG  
 C Interval: 22.5DEG  
 Test Speed: HIGH  
 Temperature:25.2°C  
 Operators:Dano  
 Test Date:2023-06-13

$\gamma$  Range: 0 - 180DEG  
 $\gamma$  Interval: 1.0DEG  
 Test System:EVERFINE GO-R5000\_V2 SYSTEM V2.00.459  
 Humidity:55.3%  
 Test Distance:2.900m [K=0.8810]  
 Remarks:

WEC AND CCEC

Test:U:119.9V I:0.3242A P:38.48W PF:0.9896 Freq:60.01Hz Lamp Flux:2489.93x1 lm		
NAME: PT07-44-40S-952C5-MVTD-SB002 3500K	TYPE:	WEIGHT:
SPEC.:	DIM.:	SERIAL No.:
MFR.: FOSHAN LEDKEY LIGHTING CO.,LTD.	SUR.:	Shielding Angle:

ρ <sub>cc</sub>	80%			70%			50%			30%			10%			0
ρ <sub>w</sub>	50%	30%	10%	50%	30%	10%	50%	30%	10%	50%	30%	10%	50%	30%	10%	0
ρ <sub>fc</sub>	20%			20%			20%			20%			20%			0
RCR	RCR:Room Cavity Ratio						Wall Exitance Coefficients(WEC)									
0.0																
1.0	.362	.206	.065	.338	.193	.061	.293	.168	.054	.251	.145	.047	.213	.124	.040	
2.0	.308	.169	.052	.286	.158	.049	.245	.136	.042	.207	.116	.036	.172	.098	.031	
3.0	.272	.145	.043	.253	.135	.041	.215	.117	.035	.180	.099	.030	.148	.082	.025	
4.0	.245	.127	.037	.227	.119	.035	.192	.102	.030	.160	.086	.026	.131	.071	.022	
5.0	.223	.114	.033	.206	.106	.031	.175	.091	.027	.145	.077	.023	.117	.063	.019	
6.0	.205	.103	.029	.189	.096	.028	.160	.082	.024	.133	.069	.020	.107	.056	.017	
7.0	.189	.094	.027	.175	.087	.025	.148	.075	.021	.122	.063	.018	.098	.051	.015	
8.0	.176	.086	.024	.162	.080	.023	.137	.068	.020	.113	.057	.017	.091	.047	.014	
9.0	.164	.079	.022	.152	.074	.021	.128	.063	.018	.106	.053	.015	.085	.043	.012	
10.0	.154	.074	.020	.142	.069	.019	.120	.059	.017	.099	.049	.014	.079	.040	.011	

ρ <sub>cc</sub>	80%			70%			50%			30%			10%			0
ρ <sub>w</sub>	50%	30%	10%	50%	30%	10%	50%	30%	10%	50%	30%	10%	50%	30%	10%	0
ρ <sub>fc</sub>	20%			20%			20%			20%			20%			0
RCR	RCR:Room Cavity Ratio						Ceiling Cavity Exitance Coefficients(CCEC)									
0.0	.613	.613	.613	.524	.524	.524	.358	.358	.358	.206	.206	.206	.066	.066	.066	
1.0	.610	.582	.557	.522	.499	.479	.357	.344	.331	.206	.199	.193	.066	.064	.062	
2.0	.604	.561	.525	.517	.483	.454	.354	.334	.317	.204	.194	.186	.066	.063	.060	
3.0	.596	.546	.505	.511	.471	.438	.351	.327	.307	.203	.191	.181	.065	.062	.059	
4.0	.589	.534	.492	.506	.462	.428	.348	.322	.301	.201	.188	.178	.065	.061	.059	
5.0	.582	.525	.483	.500	.454	.420	.344	.317	.297	.200	.186	.176	.064	.061	.058	
6.0	.575	.518	.477	.495	.449	.415	.341	.314	.294	.198	.185	.175	.064	.060	.058	
7.0	.569	.512	.472	.489	.444	.411	.338	.311	.291	.196	.183	.173	.063	.060	.057	
8.0	.563	.507	.468	.485	.440	.408	.335	.309	.290	.195	.182	.173	.063	.060	.057	
9.0	.557	.502	.465	.480	.436	.406	.333	.306	.288	.194	.181	.172	.063	.059	.057	
10.0	.552	.499	.463	.476	.433	.404	.330	.305	.287	.193	.180	.171	.062	.059	.057	

C Range: 0 - 360DEG  
 C Interval: 22.5DEG  
 Test Speed: HIGH  
 Temperature:25.2℃  
 Operators:Dano  
 Test Date:2023-06-13

γ Range: 0 - 180DEG  
 γ Interval: 1.0DEG  
 Test System:EVERFINE GO-R5000\_V2 SYSTEM V2.00.459  
 Humidity:55.3%  
 Test Distance:2.900m [K=0.8810]  
 Remarks:

UGR(Unified Glare Rating) Table

Test:U:119.9V I:0.3242A P:38.48W PF:0.9896 Freq:60.01Hz										
Lamp Flux:2489.93x1 lm										
NAME: PT07-44-40S-952C5-MVTD-SB002 3500K					TYPE:			WEIGHT:		
SPEC.:					DIM.:			SERIAL No.:		
MFR.: FOSHAN LEDKEY LIGHTING CO.,LTD.					SUR.:			Shielding Angle:		
ceiling/cavity	0.7	0.7	0.5	0.5	0.3	0.7	0.7	0.5	0.5	0.3
walls	0.5	0.3	0.5	0.3	0.3	0.5	0.3	0.5	0.3	0.3
working plane	0.2	0.2	0.2	0.2	0.2	0.2	0.2	0.2	0.2	0.2
Room dimensions	Viewed crosswise					Viewed endwise				
x = 2H y = 2H	0.4	2.3	2.3	4.2	6.8	5.8	7.6	7.6	9.6	12.1
3H	5.7	7.4	7.6	9.3	12.0	7.2	8.9	9.1	10.8	13.4
4H	8.4	10.0	10.4	12.0	14.6	7.6	9.2	9.6	11.2	13.9
6H	11.3	12.8	13.3	14.8	17.5	7.9	9.4	9.9	11.4	14.1
8H	12.8	14.2	14.8	16.3	18.9	8.0	9.4	10.0	11.4	14.1
12H	14.5	15.9	16.5	17.9	20.6	7.9	9.3	9.9	11.3	14.0
4H 2H	0.4	2.0	2.4	4.0	6.6	6.8	8.4	8.7	10.4	13.0
3H	6.0	7.4	8.0	9.4	12.1	8.7	10.1	10.7	12.1	14.8
4H	9.1	10.3	11.1	12.4	15.1	9.4	10.7	11.5	12.8	15.5
6H	12.2	13.3	14.3	15.4	18.2	10.0	11.1	12.0	13.2	16.0
8H	13.9	14.9	15.9	17.0	19.8	10.2	11.2	12.2	13.3	16.1
12H	15.7	16.6	17.8	18.8	21.6	10.2	11.2	12.3	13.3	16.1
8H 4H	9.2	10.3	11.3	12.3	15.1	11.0	12.1	13.1	14.2	17.0
6H	12.7	13.6	14.8	15.8	18.6	12.1	13.0	14.2	15.2	18.0
8H	14.6	15.4	16.8	17.6	20.4	12.6	13.4	14.7	15.5	18.4
12H	16.8	17.5	18.9	19.6	22.5	12.9	13.6	15.1	15.8	18.7
12H 4H	9.1	10.1	11.2	12.2	15.0	11.6	12.6	13.7	14.7	17.5
6H	12.8	13.6	14.9	15.7	18.6	13.0	13.8	15.2	16.0	18.8
8H	14.8	15.5	17.0	17.7	20.6	13.8	14.5	15.9	16.6	19.5
CIE190: 2010										

CIE190: 2010  
Area: 0.36 m2

C Range: 0 - 360DEG  
C Interval: 22.5DEG  
Test Speed: HIGH  
Temperature:25.2℃  
Operators:Dano  
Test Date:2023-06-13

γ Range: 0 - 180DEG  
γ Interval: 1.0DEG  
Test System:EVERFINE GO-R5000\_V2 SYSTEM V2.00.459  
Humidity:55.3%  
Test Distance:2.900m [K=0.8810]  
Remarks:

**UTILIZATION FACTORS TABLE**

Test:U:119.9V I:0.3242A P:38.48W PF:0.9896 Freq:60.01Hz Lamp Flux:2489.93x1 lm		
NAME: PT07-44-40S-952C5-MVTD-SB002 3500K	TYPE:	WEIGHT:
SPEC.:	DIM.:	SERIAL No.:
MFR.: FOSHAN LEDKEY LIGHTING CO.,LTD.	SUR.:	Shielding Angle:

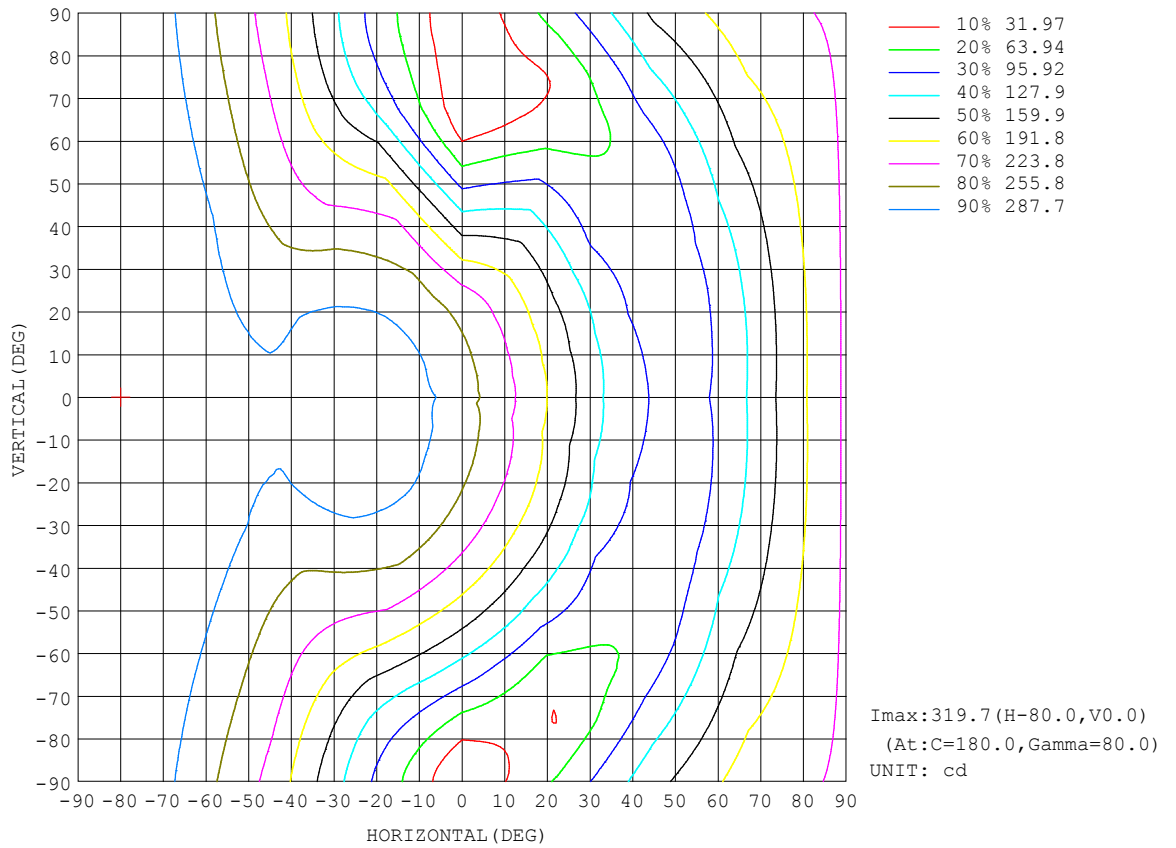
REFLECTANCE										
Ceiling	0.8	0.8	0.8	0.7	0.7	0.7	0.5	0.5	0.5	0
Walls	0.7	0.5	0.3	0.7	0.5	0.3	0.7	0.5	0.3	0
Working plane	0.2	0.2	0.2	0.2	0.2	0.2	0.2	0.2	0.2	0
ROOM INDEX	UTILIZATION FACTORS (PERCENT) $k(RI) \times RCR = 5$									
k = 0.60	38	26	20	36	25	19	32	23	17	10
0.80	47	34	26	44	32	25	38	29	23	13
1.00	54	41	33	50	39	31	43	35	28	16
1.25	61	48	39	56	45	37	48	39	33	18
1.50	66	53	45	61	50	42	51	43	36	20
2.00	73	62	53	67	57	49	57	49	43	23
2.50	78	67	59	72	62	55	60	53	47	26
3.00	82	72	64	75	66	59	63	56	51	27
4.00	87	78	71	79	72	66	66	60	56	30
5.00	90	82	76	82	76	70	68	63	59	32
ROOM INDEX	UF(total)									Direct
According to DIN EN 13032-2 2004			Suspended				SHRNOM = 1.25			

C Range: 0 - 360DEG  
 C Interval: 22.5DEG  
 Test Speed: HIGH  
 Temperature:25.2°C  
 Operators:Dano  
 Test Date:2023-06-13

$\gamma$  Range: 0 - 180DEG  
 $\gamma$  Interval: 1.0DEG  
 Test System:EVERFINE GO-R5000\_V2 SYSTEM V2.00.459  
 Humidity:55.3%  
 Test Distance:2.900m [K=0.8810]  
 Remarks:

ISOCANDELA DIAGRAM

Test:U:119.9V I:0.3242A P:38.48W PF:0.9896 Freq:60.01Hz Lamp Flux:2489.93x1 lm		
NAME: PT07-44-40S-952C5-MVTD-SB002 3500K	TYPE:	WEIGHT:
SPEC.:	DIM.:	SERIAL No.:
MFR.: FOSHAN LEDKEY LIGHTING CO.,LTD.	SUR.:	Shielding Angle:



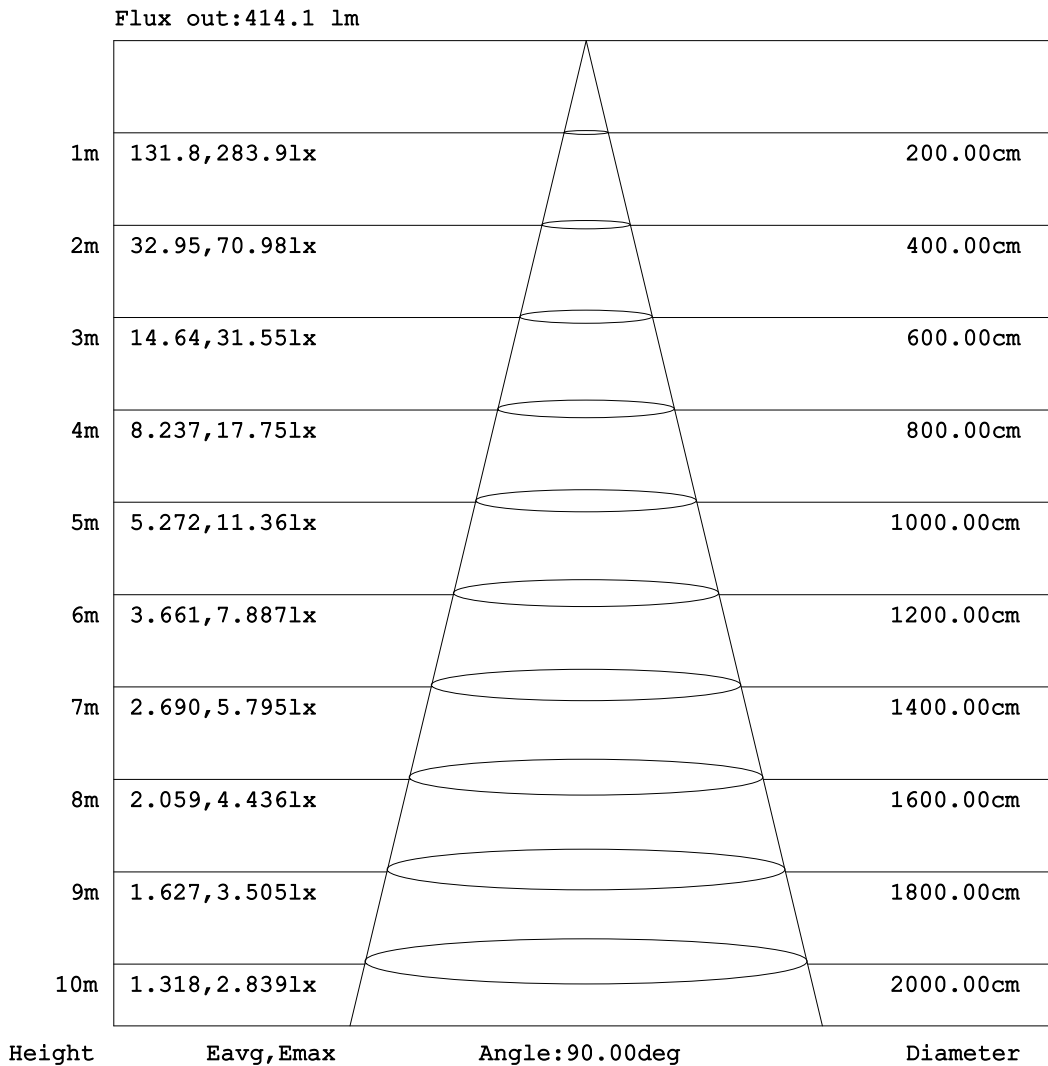
C Range: 0 - 360DEG  
C Interval: 22.5DEG  
Test Speed: HIGH  
Temperature:25.2°C  
Operators:Dano  
Test Date:2023-06-13

γ Range: 0 - 180DEG  
γ Interval: 1.0DEG  
Test System:EVERFINE GO-R5000\_V2 SYSTEM V2.00.459  
Humidity:55.3%  
Test Distance:2.900m [K=0.8810]  
Remarks:



**AAI Figure**

Test:U:119.9V I:0.3242A P:38.48W PF:0.9896 Freq:60.01Hz Lamp Flux:2489.93x1 lm		
NAME: PT07-44-40S-952C5-MVTD-SB002 3500K	TYPE:	WEIGHT:
SPEC.:	DIM.:	SERIAL No.:
MFR.: FOSHAN LEDKEY LIGHTING CO.,LTD.	SUR.:	Shielding Angle:



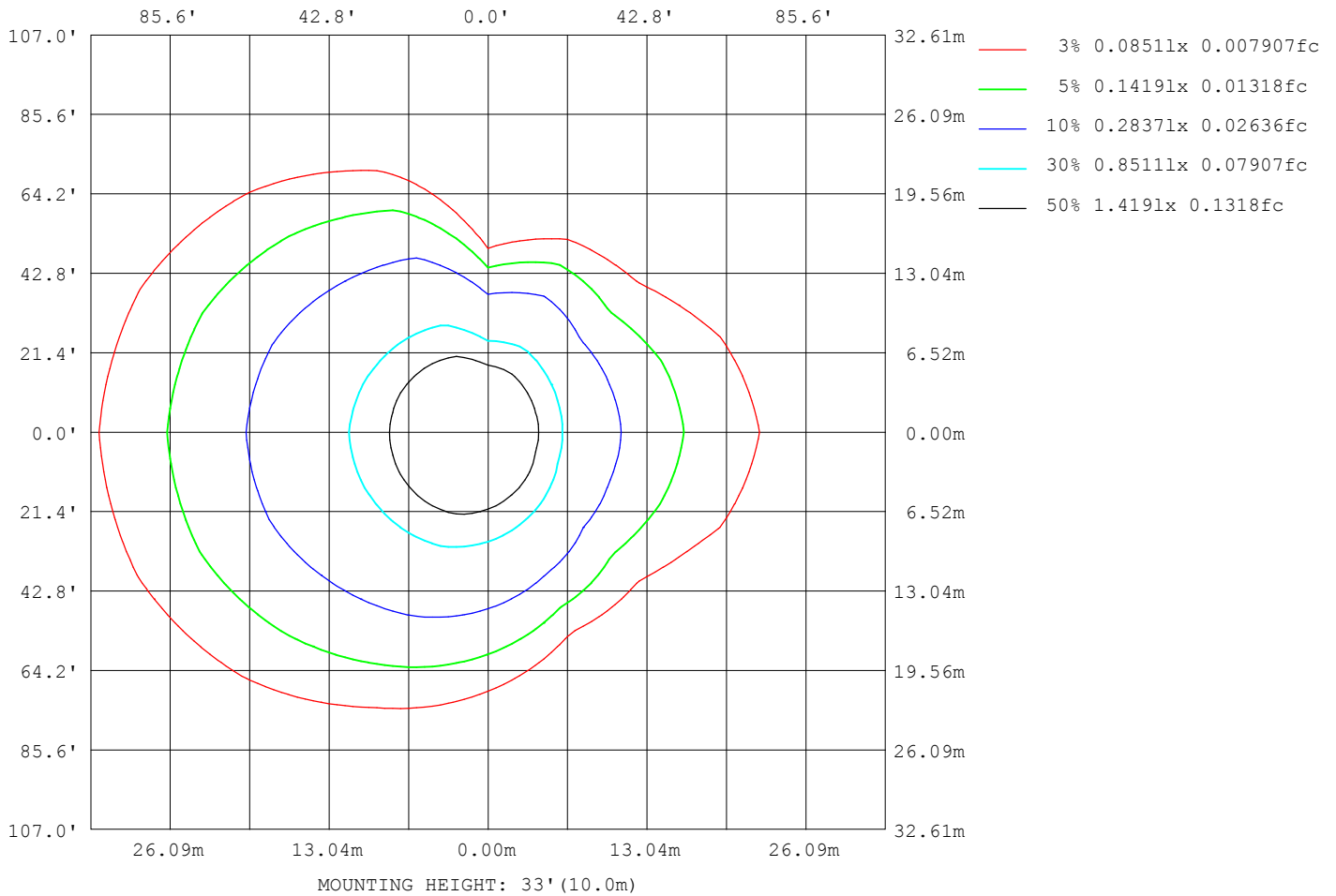
Note:The Curves indicate the illuminated area and the average illumination when the luminaire is at different distance.

C Range: 0 - 360DEG  
 C Interval: 22.5DEG  
 Test Speed: HIGH  
 Temperature:25.2°C  
 Operators:Dano  
 Test Date:2023-06-13

γ Range: 0 - 180DEG  
 γ Interval: 1.0DEG  
 Test System:EVERFINE GO-R5000\_V2 SYSTEM V2.00.459  
 Humidity:55.3%  
 Test Distance:2.900m [K=0.8810]  
 Remarks:

ISOLUX DIAGRAM

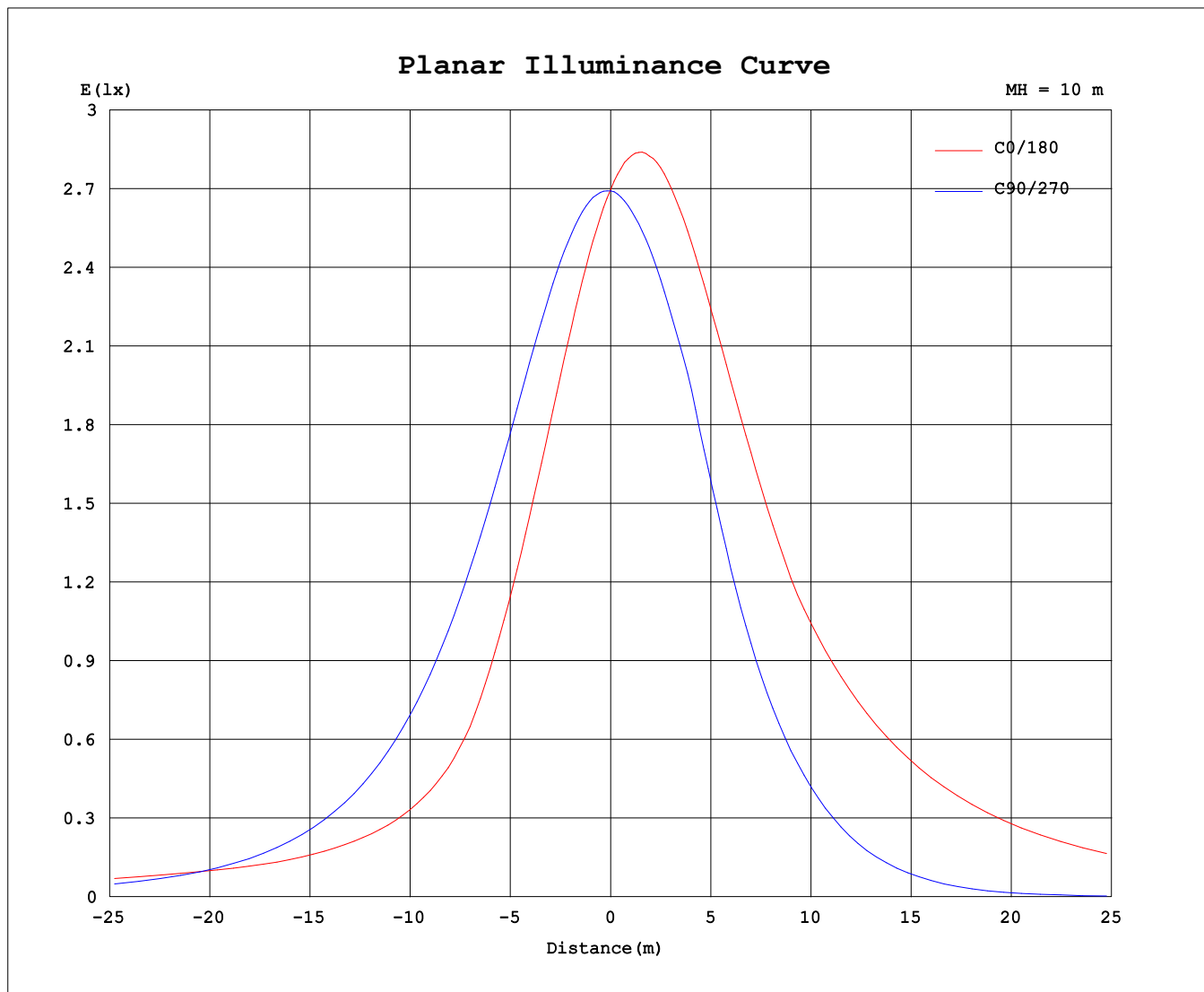
Test:U:119.9V I:0.3242A P:38.48W PF:0.9896 Freq:60.01Hz Lamp Flux:2489.93x1 lm		
NAME: PT07-44-40S-952C5-MVTD-SB002 3500K	TYPE:	WEIGHT:
SPEC.:	DIM.:	SERIAL No.:
MFR.: FOSHAN LEDKEY LIGHTING CO.,LTD.	SUR.:	Shielding Angle:



C Range: 0 - 360DEG  
 C Interval: 22.5DEG  
 Test Speed: HIGH  
 Temperature:25.2°C  
 Operators:Dano  
 Test Date:2023-06-13

γ Range: 0 - 180DEG  
 γ Interval: 1.0DEG  
 Test System:EVERFINE GO-R5000\_V2 SYSTEM V2.00.459  
 Humidity:55.3%  
 Test Distance:2.900m [K=0.8810]  
 Remarks:

### Planar Illuminance Curve



C Range: 0 - 360DEG  
C Interval: 22.5DEG  
Test Speed: HIGH  
Temperature:25.2℃  
Operators:Dano  
Test Date:2023-06-13

γ Range: 0 - 180DEG  
γ Interval: 1.0DEG  
Test System:EVERFINE GO-R5000\_V2 SYSTEM V2.00.459  
Humidity:55.3%  
Test Distance:2.900m [K=0.8810]  
Remarks:

LUMINOUS DISTRIBUTION INTENSITY DATA

Test:U:119.9V I:0.3242A P:38.48W PF:0.9896 Freq:60.01Hz Lamp Flux:2489.93x1 lm		
NAME: PT07-44-40S-952C5-MVTD-SB002 3500K	TYPE:	WEIGHT:
SPEC.:	DIM.:	SERIAL No.:
MFR.: FOSHAN LEDKEY LIGHTING CO.,LTD.	SUR.:	Shielding Angle:

Table--1

UNIT: cd

C (DEG) γ (DEG)	0	22.5	45	67.5	90	112.5	135	157.5	180	202.5	225	247.5	270	292.5	315	337.5			
0	269	269	269	269	269	269	269	269	269	269	269	269	269	269	269	269			
5	252	253	258	263	269	275	280	282	284	282	278	272	266	261	256	253			
10	233	235	245	255	267	279	288	294	296	293	284	274	262	251	241	235			
15	212	216	229	246	264	281	294	303	305	301	288	273	256	238	224	215			
20	190	195	212	234	258	283	298	308	310	306	289	269	247	225	206	194			
25	167	172	193	220	250	282	299	311	313	307	288	264	229	209	186	172			
30	143	148	173	204	240	277	296	309	311	306	283	257	204	192	165	148			
35	118	124	151	187	227	269	291	305	307	301	276	247	176	174	143	124			
40	102	105	128	167	213	259	283	297	299	293	266	234	147	154	120	103			
45	93.9	93.5	105	146	196	246	272	286	294	282	254	220	119	133	96.7	92.0			
50	90.6	87.3	87.1	124	177	230	258	286	297	280	239	204	87.9	111	81.0	86.5			
55	92.3	86.3	75.2	100	156	213	246	288	301	281	228	186	58.2	88.1	71.9	86.3			
60	99.9	90.4	68.3	75.6	133	192	240	291	307	284	223	166	31.6	65.0	68.5	91.2			
65	120	107	66.9	53.0	109	170	236	294	312	288	220	145	13.7	45.8	70.8	106			
70	143	129	74.6	38.5	83.7	148	233	297	316	292	219	125	6.72	35.6	83.1	129			
75	166	151	94.0	31.4	57.7	132	230	297	318	294	218	112	6.11	33.5	105	152			
80	188	172	113	37.5	33.2	119	227	296	318	295	217	103	4.71	44.7	126	174			
85	208	192	132	52.5	12.3	109	222	294	317	293	214	97.0	2.02	62.5	146	195			
90	228	210	149	68.1	1.58	102	216	289	314	291	211	94.3	0.57	80.7	166	215			
95	245	227	166	83.5	7.14	98.6	210	283	308	286	208	95.9	5.47	98.0	184	233			
100	261	242	181	98.1	25.1	104	205	277	302	281	206	105	24.6	115	200	249			
105	274	255	194	112	48.0	120	204	272	297	277	207	122	49.6	130	214	263			
110	285	265	205	124	73.7	136	212	268	293	274	216	139	78.0	144	226	274			
115	293	273	215	136	101	150	224	273	292	276	229	153	108	155	235	282			
120	298	278	222	150	127	162	234	282	300	286	239	166	136	169	242	287			
125	299	280	226	163	154	177	242	288	306	293	247	181	164	180	245	289			
130	298	278	229	183	179	194	247	291	309	297	252	199	190	198	246	288			
135	293	275	234	202	202	212	250	291	308	298	255	218	213	215	249	283			
140	284	271	242	221	223	228	253	288	304	296	258	236	235	229	251	277			
145	282	273	251	234	233	245	260	282	296	291	267	254	249	243	247	276			
150	281	276	254	243	231	260	269	282	291	290	276	270	239	248	259	276			
155	283	283	255	225	222	271	278	287	291	292	285	283	232	215	263	270			
160	289	285	237	204	211	271	288	291	294	296	293	294	242	205	235	271			
165	291	265	215	200	196	239	288	298	300	302	302	294	229	207	194	234			
170	291	201	215	217	214	219	273	293	295	302	291	275	222	212	199	197			
175	234	187	226	232	234	226	238	250	251	275	253	241	229	234	225	215			
180	98.1	204	232	246	250	245	221	199	102	82.6	208	227	244	248	242	226			

C Range: 0 - 360DEG  
 C Interval: 22.5DEG  
 Test Speed: HIGH  
 Temperature:25.2℃  
 Operators:Dano  
 Test Date:2023-06-13

γ Range: 0 - 180DEG  
 γ Interval: 1.0DEG  
 Test System:EVERFINE GO-R5000\_V2 SYSTEM V2.00.459  
 Humidity:55.3%  
 Test Distance:2.900m [K=0.8810]  
 Remarks: