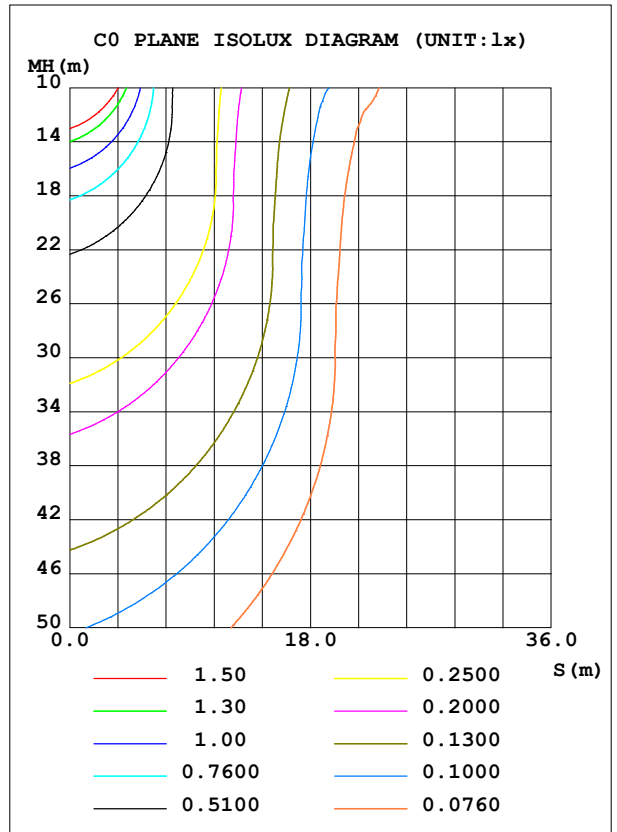
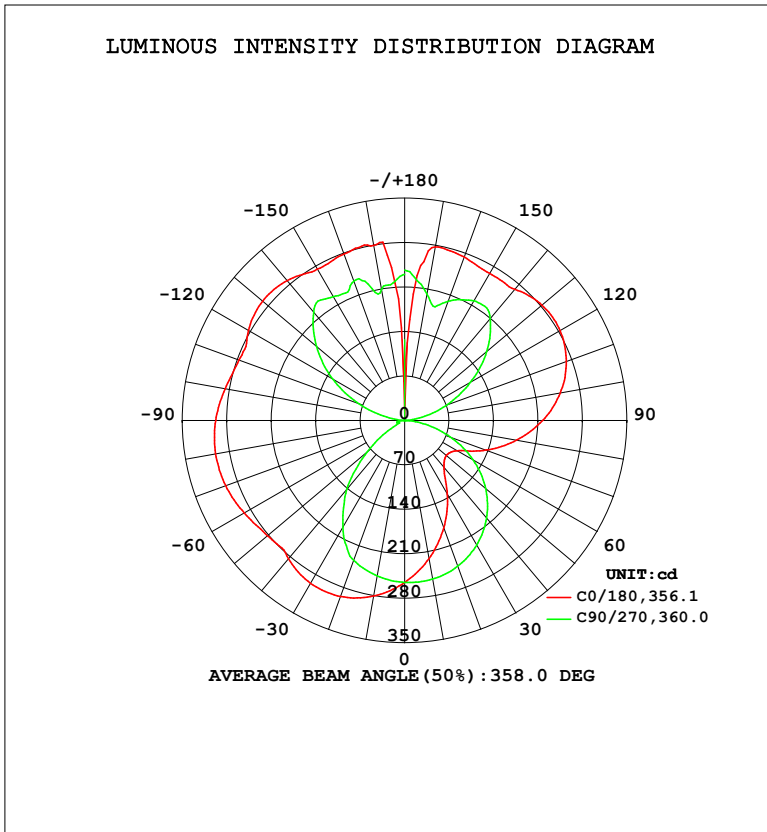


LUMINAIRE PHOTOMETRIC TEST REPORT

Test:U:119.9V I:0.3195A P:37.89W PF:0.9892 Freq:60.01Hz Lamp Flux:2358.7x1 lm		
NAME: PT07-44-40S-952C5-MVTD-SB002 3000K	TYPE:	WEIGHT:
SPEC.:	DIM.:	SERIAL No.:
MFR.: FOSHAN LEDKEY LIGHTING CO.,LTD.	SUR.:	Shielding Angle:

DATA OF LAMP		PHOTOMETRIC DATA			
MODEL		Imax (cd)	302.3	S/MH (C0/180)	1.68
NOMINAL POWER (W)		LOR (%)	100.0	S/MH (C90/270)	1.15
RATED VOLTAGE (V)	120	TOTAL FLUX (lm)	2358.7	η UP, DN (C0-180)	27.1, 21.7
NOMINAL FLUX (lm)	2358.7	CIE CLASS	DIFFUSE	η UP, DN (C180-360)	28.3, 22.8
LAMPS INSIDE	1	η up (%)	55.5	CIBSE SHR NOM	1.25
TEST VOLTAGE (V)	120	η down (%)	44.5	CIBSE SHR MAX	1.35



C Range: 0 - 360DEG
 C Interval: 22.5DEG
 Test Speed: HIGH
 Temperature: 25.2 °C
 Operators: Dano
 Test Date: 2023-06-13

γ Range: 0 - 180DEG
 γ Interval: 1.0DEG
 Test System: EVERFINE GO-R5000_V2 SYSTEM V2.00.459
 Humidity: 55.3%
 Test Distance: 2.900m [K=0.8810]
 Remarks:

ZONAL FLUX DIAGRAM

ZONAL FLUX DIAGRAM:

γ	C0	C45	C90	C135	C180	C225	C270	C315	γ	Φ zone	Φ total	%lum,lamp
10	221.2	231.4	253.5	272.8	280.7	269.5	248.7	228.4	0- 10	24.13	24.13	1.02,1.02
20	180.1	200.2	244.3	282.0	294.8	274.8	234.6	195.0	10- 20	69.29	93.42	3.96,3.96
30	134.8	162.8	226.8	280.8	296.1	269.5	195.2	156.7	20- 30	105.3	198.7	8.43,8.43
40	96.92	120.1	200.8	267.7	284.6	253.7	141.9	114.4	30- 40	126.8	325.5	13.8,13.8
50	86.09	82.04	166.6	243.9	282.1	228.4	76.31	76.83	40- 50	134.3	459.8	19.5,19.5
60	95.77	65.18	124.7	226.0	291.7	213.1	20.51	64.44	50- 60	135.6	595.4	25.2,25.2
70	136.8	73.02	76.92	219.2	299.9	209.8	12.07	77.15	60- 70	138.9	734.3	31.1,31.1
80	179.2	109.8	29.53	212.3	302.3	207.8	11.17	117.9	70- 80	150.8	885.1	37.5,37.5
90	217.2	143.9	1.342	201.8	297.6	202.9	0.5631	156.0	80- 90	164.8	1050	44.5,44.5
100	248.7	173.5	23.94	191.6	287.0	197.4	24.63	188.5	90-100	177.3	1227	52,52
110	270.9	196.8	69.15	198.4	277.6	205.7	75.86	213.0	100-110	190.4	1418	60.1,60.1
120	282.9	212.0	119.2	220.0	283.9	227.7	131.0	227.8	110-120	199.3	1617	68.5,68.5
130	282.5	218.1	168.7	232.3	292.1	240.0	181.1	232.2	120-130	198.0	1815	76.9,76.9
140	269.8	231.0	209.5	238.3	287.8	245.0	223.1	237.2	130-140	182.8	1998	84.7,84.7
150	267.6	242.1	217.7	255.0	275.4	261.4	225.1	246.4	140-150	155.1	2153	91.3,91.3
160	274.0	225.1	199.5	272.0	278.7	277.0	233.9	222.6	150-160	116.1	2269	96.2,96.2
170	277.5	204.3	202.7	256.7	280.1	276.5	209.8	189.0	160-170	68.45	2337	99.1,99.1
180	49.33	218.5	236.9	209.1	96.54	197.4	230.6	230.4	170-180	21.52	2359	100,100
DEG	LUMINOUS INTENSITY:cd									UNIT:lm		

Conical surface Flux(90deg): 392.39 lm

%lum = 16.6%

%lamp = 16.6%

Conical surface Flux(120deg): 595.41 lm

%lum = 25.2%

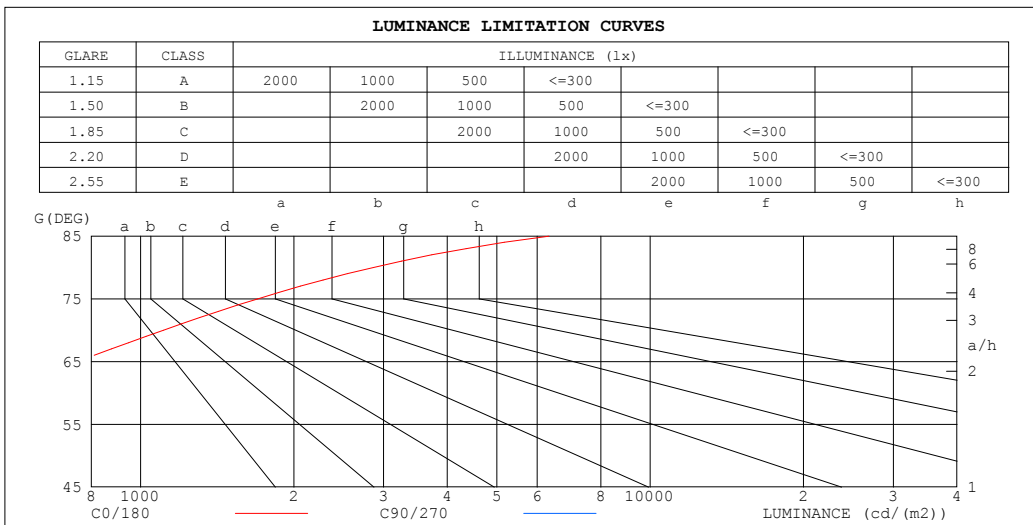
%lamp = 25.2%

C Range: 0 - 360DEG
 C Interval: 22.5DEG
 Test Speed: HIGH
 Temperature:25.2℃
 Operators:Dano
 Test Date:2023-06-13

γ Range: 0 - 180DEG
 γ Interval: 1.0DEG
 Test System:EVERFINE GO-R5000_V2 SYSTEM V2.00.459
 Humidity:55.3%
 Test Distance:2.900m [K=0.8810]
 Remarks:

LUMINANCE LIMITATION CURVES

Test:U:119.9V I:0.3195A P:37.89W PF:0.9892 Freq:60.01Hz Lamp Flux:2358.7x1 lm		
NAME: PT07-44-40S-952C5-MVTD-SB002 3000K	TYPE:	WEIGHT:
SPEC.:	DIM.:	SERIAL No.:
MFR.: FOSHAN LEDKEY LIGHTING CO.,LTD.	SUR.:	Shielding Angle:



LUMINANCE cd/(m2)		
G (DEG)	C0/180	C90/270
85	6333	337
80	2862	473
75	1697	564
70	1109	626
65	751	667
60	531	694
55	426	711
50	371	722
45	349	727

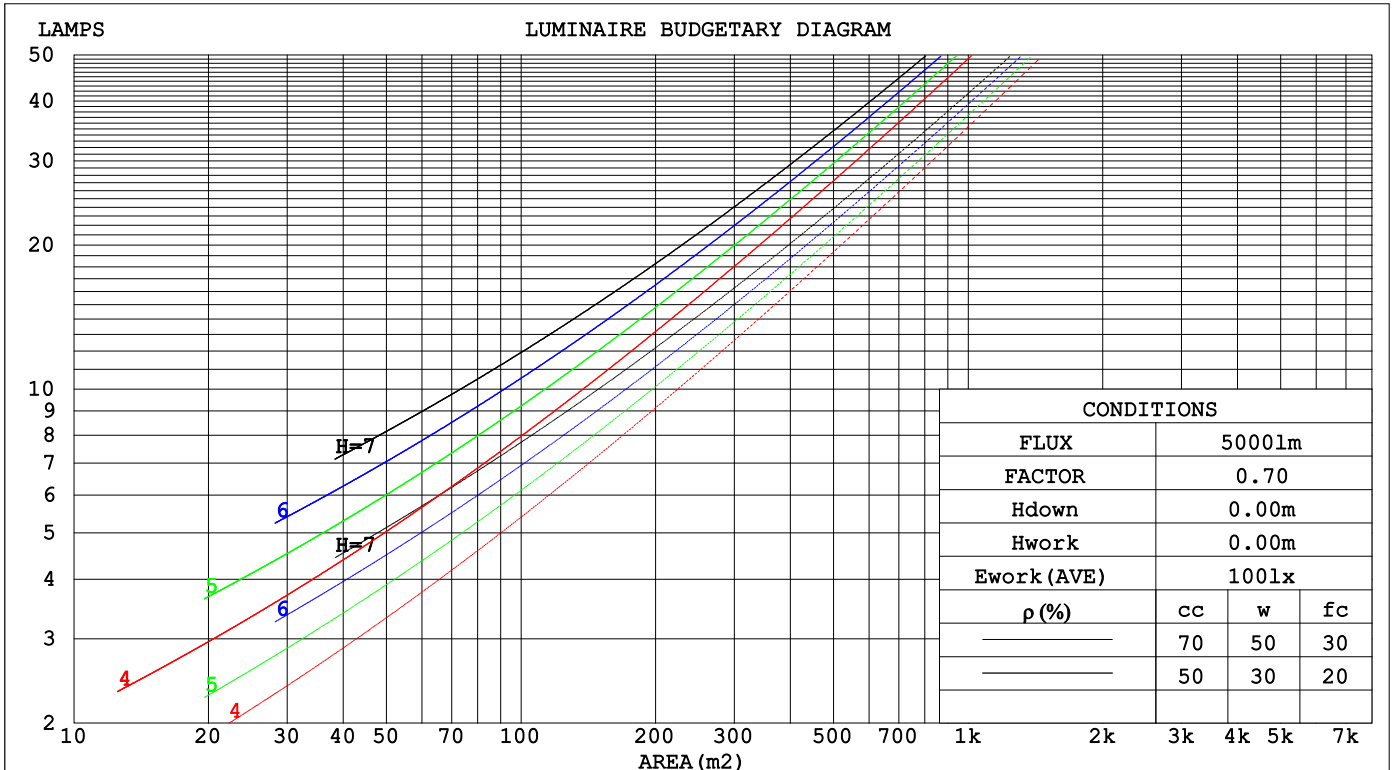
C Range: 0 - 360DEG
 C Interval: 22.5DEG
 Test Speed: HIGH
 Temperature: 25.2°C
 Operators: Dano
 Test Date: 2023-06-13

γ Range: 0 - 180DEG
 γ Interval: 1.0DEG
 Test System: EVERFINE GO-R5000_V2 SYSTEM V2.00.459
 Humidity: 55.3%
 Test Distance: 2.900m [K=0.8810]
 Remarks:

CU AND LUMINAIRE BUDGETARY ESTIMATE DIAGRAM

Test:U:119.9V I:0.3195A P:37.89W PF:0.9892 Freq:60.01Hz Lamp Flux:2358.7x1 lm		
NAME: PT07-44-40S-952C5-MVTD-SB002 3000K	TYPE:	WEIGHT:
SPEC.:	DIM.:	SERIAL No.:
MFR.: FOSHAN LEDKEY LIGHTING CO.,LTD.	SUR.:	Shielding Angle:

ρcc	80%			70%			50%			30%			10%			0
ρw	50%	30%	10%	50%	30%	10%	50%	30%	10%	50%	30%	10%	50%	30%	10%	0
ρfc	20%			20%			20%			20%			20%			0
RCR	RCR:Room Cavity Ratio						Coefficients of Utilization(CU)									
0.0	1.06	1.06	1.06	.97	.97	.97	.80	.80	.80	.65	.65	.65	.51	.51	.51	.45
1.0	.88	.83	.78	.80	.76	.72	.66	.62	.59	.52	.50	.48	.40	.39	.37	.31
2.0	.75	.68	.62	.69	.62	.57	.56	.51	.47	.45	.41	.38	.34	.32	.29	.24
3.0	.65	.57	.51	.60	.52	.47	.49	.43	.39	.39	.35	.31	.30	.27	.24	.19
4.0	.58	.49	.42	.53	.45	.39	.43	.37	.32	.34	.30	.26	.26	.23	.20	.16
5.0	.51	.42	.36	.47	.39	.33	.38	.32	.28	.31	.26	.22	.23	.20	.17	.14
6.0	.46	.37	.31	.42	.34	.28	.34	.28	.24	.28	.23	.19	.21	.18	.15	.12
7.0	.41	.33	.27	.38	.30	.25	.31	.25	.21	.25	.20	.17	.19	.16	.13	.10
8.0	.37	.29	.23	.34	.27	.22	.28	.22	.18	.23	.18	.15	.18	.14	.12	.09
9.0	.34	.26	.21	.31	.24	.19	.26	.20	.16	.21	.17	.13	.16	.13	.11	.08
10.0	.31	.23	.19	.28	.22	.17	.24	.18	.15	.19	.15	.12	.15	.12	.10	.07



C Range: 0 - 360DEG
 C Interval: 22.5DEG
 Test Speed: HIGH
 Temperature:25.2°C
 Operators:Dano
 Test Date:2023-06-13

γ Range: 0 - 180DEG
 γ Interval: 1.0DEG
 Test System:EVERFINE GO-R5000_V2 SYSTEM V2.00.459
 Humidity:55.3%
 Test Distance:2.900m [K=0.8810]
 Remarks:

WEC AND CCEC

Test:U:119.9V I:0.3195A P:37.89W PF:0.9892 Freq:60.01Hz Lamp Flux:2358.7x1 lm		
NAME: PT07-44-40S-952C5-MVTD-SB002 3000K	TYPE:	WEIGHT:
SPEC.:	DIM.:	SERIAL No.:
MFR.: FOSHAN LEDKEY LIGHTING CO.,LTD.	SUR.:	Shielding Angle:

ρ _{cc}	80%			70%			50%			30%			10%			0
ρ _w	50%	30%	10%	50%	30%	10%	50%	30%	10%	50%	30%	10%	50%	30%	10%	0
ρ _{fc}	20%			20%			20%			20%			20%			0
RCR	RCR:Room Cavity Ratio						Wall Exitance Coefficients(WEC)									
0.0																
1.0	.362	.206	.065	.338	.193	.061	.293	.168	.054	.252	.145	.047	.214	.124	.040	
2.0	.308	.169	.052	.286	.158	.049	.245	.136	.042	.208	.116	.036	.173	.098	.031	
3.0	.273	.145	.043	.253	.135	.041	.215	.117	.035	.180	.099	.030	.148	.082	.025	
4.0	.245	.127	.037	.227	.119	.035	.192	.102	.030	.160	.086	.026	.131	.071	.022	
5.0	.223	.114	.033	.206	.106	.031	.175	.091	.027	.145	.077	.023	.117	.063	.019	
6.0	.205	.103	.029	.189	.096	.028	.160	.082	.024	.133	.069	.020	.107	.056	.017	
7.0	.189	.094	.027	.175	.087	.025	.148	.075	.021	.122	.063	.018	.098	.051	.015	
8.0	.176	.086	.024	.162	.080	.023	.137	.069	.020	.113	.057	.017	.091	.047	.014	
9.0	.164	.079	.022	.152	.074	.021	.128	.063	.018	.106	.053	.015	.085	.043	.012	
10.0	.154	.074	.020	.142	.069	.019	.120	.059	.017	.099	.049	.014	.079	.040	.011	

ρ _{cc}	80%			70%			50%			30%			10%			0
ρ _w	50%	30%	10%	50%	30%	10%	50%	30%	10%	50%	30%	10%	50%	30%	10%	0
ρ _{fc}	20%			20%			20%			20%			20%			0
RCR	RCR:Room Cavity Ratio						Ceiling Cavity Exitance Coefficients(CCEC)									
0.0	.613	.613	.613	.524	.524	.524	.358	.358	.358	.205	.205	.205	.066	.066	.066	
1.0	.610	.582	.557	.522	.499	.479	.357	.344	.331	.206	.199	.193	.066	.064	.062	
2.0	.604	.561	.525	.517	.483	.454	.354	.334	.317	.204	.194	.186	.066	.063	.060	
3.0	.596	.546	.505	.511	.471	.438	.351	.327	.307	.203	.191	.181	.065	.062	.059	
4.0	.589	.534	.492	.506	.462	.428	.348	.322	.301	.201	.188	.178	.065	.061	.059	
5.0	.582	.525	.483	.500	.454	.420	.344	.317	.297	.200	.186	.176	.064	.061	.058	
6.0	.575	.518	.477	.495	.448	.415	.341	.314	.294	.198	.185	.175	.064	.060	.058	
7.0	.569	.512	.472	.489	.444	.411	.338	.311	.291	.196	.183	.173	.063	.060	.057	
8.0	.563	.507	.468	.485	.439	.408	.335	.309	.289	.195	.182	.173	.063	.060	.057	
9.0	.557	.502	.465	.480	.436	.406	.333	.306	.288	.194	.181	.172	.063	.059	.057	
10.0	.552	.498	.463	.476	.433	.404	.330	.305	.287	.193	.180	.171	.062	.059	.057	

C Range: 0 - 360DEG
 C Interval: 22.5DEG
 Test Speed: HIGH
 Temperature:25.2℃
 Operators:Dano
 Test Date:2023-06-13

γ Range: 0 - 180DEG
 γ Interval: 1.0DEG
 Test System:EVERFINE GO-R5000_V2 SYSTEM V2.00.459
 Humidity:55.3%
 Test Distance:2.900m [K=0.8810]
 Remarks:

UGR(Unified Glare Rating) Table

Test:U:119.9V I:0.3195A P:37.89W PF:0.9892 Freq:60.01Hz										
Lamp Flux:2358.7x1 lm										
NAME: PT07-44-40S-952C5-MVTD-SB002 3000K					TYPE:			WEIGHT:		
SPEC.:					DIM.:			SERIAL No.:		
MFR.: FOSHAN LEDKEY LIGHTING CO.,LTD.					SUR.:			Shielding Angle:		
ceiling/cavity	0.7	0.7	0.5	0.5	0.3	0.7	0.7	0.5	0.5	0.3
walls	0.5	0.3	0.5	0.3	0.3	0.5	0.3	0.5	0.3	0.3
working plane	0.2	0.2	0.2	0.2	0.2	0.2	0.2	0.2	0.2	0.2
Room dimensions	Viewed crosswise					Viewed endwise				
x = 2H y = 2H	0.3	2.2	2.2	4.1	6.7	5.5	7.4	7.4	9.3	11.9
3H	5.6	7.3	7.5	9.2	11.8	6.9	8.6	8.8	10.6	13.2
4H	8.3	9.9	10.2	11.9	14.5	7.3	8.9	9.3	10.9	13.6
6H	11.2	12.6	13.1	14.6	17.3	7.6	9.1	9.6	11.1	13.8
8H	12.7	14.1	14.6	16.1	18.8	7.6	9.0	9.6	11.1	13.7
12H	14.3	15.7	16.3	17.7	20.4	7.6	8.9	9.6	11.0	13.7
4H 2H	0.3	1.9	2.3	3.9	6.5	6.6	8.2	8.5	10.2	12.8
3H	5.9	7.3	7.9	9.3	12.0	8.4	9.8	10.4	11.8	14.5
4H	8.9	10.2	11.0	12.3	15.0	9.1	10.4	11.2	12.5	15.2
6H	12.1	13.2	14.1	15.3	18.0	9.7	10.8	11.7	12.9	15.6
8H	13.7	14.8	15.8	16.9	19.6	9.8	10.9	11.9	12.9	15.7
12H	15.5	16.5	17.6	18.6	21.4	9.8	10.8	11.9	12.9	15.7
8H 4H	9.1	10.1	11.1	12.2	15.0	10.8	11.8	12.8	13.9	16.7
6H	12.6	13.5	14.7	15.6	18.4	11.8	12.7	13.9	14.9	17.7
8H	14.5	15.3	16.6	17.4	20.3	12.3	13.1	14.4	15.2	18.0
12H	16.6	17.3	18.7	19.5	22.4	12.6	13.3	14.7	15.4	18.3
12H 4H	9.0	10.0	11.1	12.1	14.9	11.3	12.3	13.4	14.4	17.2
6H	12.7	13.5	14.8	15.6	18.4	12.8	13.6	14.9	15.7	18.5
8H	14.7	15.4	16.8	17.6	20.4	13.5	14.2	15.6	16.3	19.2
CIE190: 2010										

CIE190: 2010
Area: 0.36 m2

C Range: 0 - 360DEG
C Interval: 22.5DEG
Test Speed: HIGH
Temperature:25.2℃
Operators:Dano
Test Date:2023-06-13

γ Range: 0 - 180DEG
γ Interval: 1.0DEG
Test System:EVERFINE GO-R5000_V2 SYSTEM V2.00.459
Humidity:55.3%
Test Distance:2.900m [K=0.8810]
Remarks:

UTILIZATION FACTORS TABLE

Test:U:119.9V I:0.3195A P:37.89W PF:0.9892 Freq:60.01Hz Lamp Flux:2358.7x1 lm		
NAME: PT07-44-40S-952C5-MVTD-SB002 3000K	TYPE:	WEIGHT:
SPEC.:	DIM.:	SERIAL No.:
MFR.: FOSHAN LEDKEY LIGHTING CO.,LTD.	SUR.:	Shielding Angle:

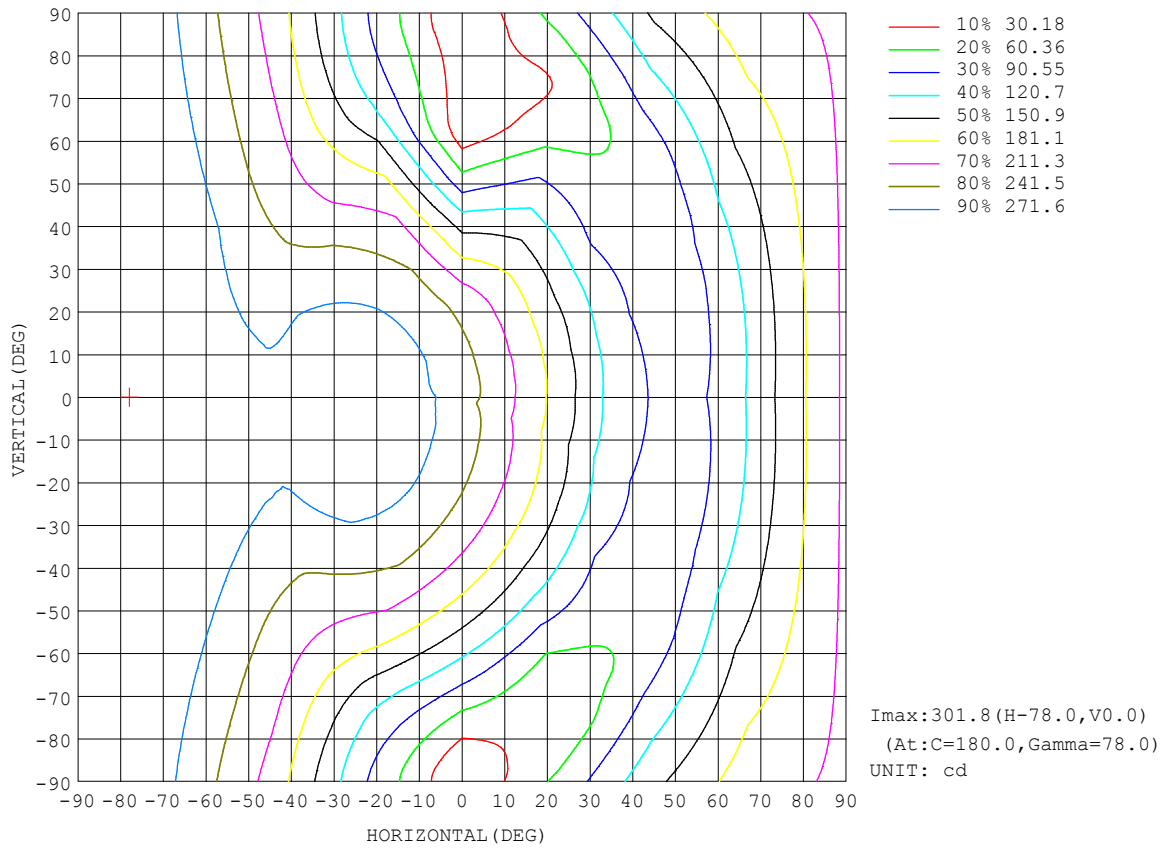
REFLECTANCE										
Ceiling	0.8	0.8	0.8	0.7	0.7	0.7	0.5	0.5	0.5	0
Walls	0.7	0.5	0.3	0.7	0.5	0.3	0.7	0.5	0.3	0
Working plane	0.2	0.2	0.2	0.2	0.2	0.2	0.2	0.2	0.2	0
ROOM INDEX	UTILIZATION FACTORS (PERCENT) $k(RI) \times RCR = 5$									
k = 0.60	38	27	20	36	25	19	32	23	17	10
0.80	47	34	26	44	32	25	38	29	23	13
1.00	54	41	33	50	39	31	43	35	28	16
1.25	61	48	39	56	45	37	48	39	33	18
1.50	66	53	44	61	50	42	51	43	36	20
2.00	73	62	53	67	57	49	57	49	43	23
2.50	78	67	59	72	62	55	60	53	47	26
3.00	82	72	64	75	66	59	63	56	51	27
4.00	87	78	71	79	72	66	66	60	56	30
5.00	90	82	76	82	76	70	68	63	59	32
ROOM INDEX	UF(total)									Direct
According to DIN EN 13032-2 2004			Suspended				SHRNOM = 1.25			

C Range: 0 - 360DEG
 C Interval: 22.5DEG
 Test Speed: HIGH
 Temperature:25.2°C
 Operators:Dano
 Test Date:2023-06-13

γ Range: 0 - 180DEG
 γ Interval: 1.0DEG
 Test System:EVERFINE GO-R5000_V2 SYSTEM V2.00.459
 Humidity:55.3%
 Test Distance:2.900m [K=0.8810]
 Remarks:

ISOCANDELA DIAGRAM

Test:U:119.9V I:0.3195A P:37.89W PF:0.9892 Freq:60.01Hz Lamp Flux:2358.7x1 lm		
NAME: PT07-44-40S-952C5-MVTD-SB002 3000K	TYPE:	WEIGHT:
SPEC.:	DIM.:	SERIAL No.:
MFR.: FOSHAN LEDKEY LIGHTING CO.,LTD.	SUR.:	Shielding Angle:

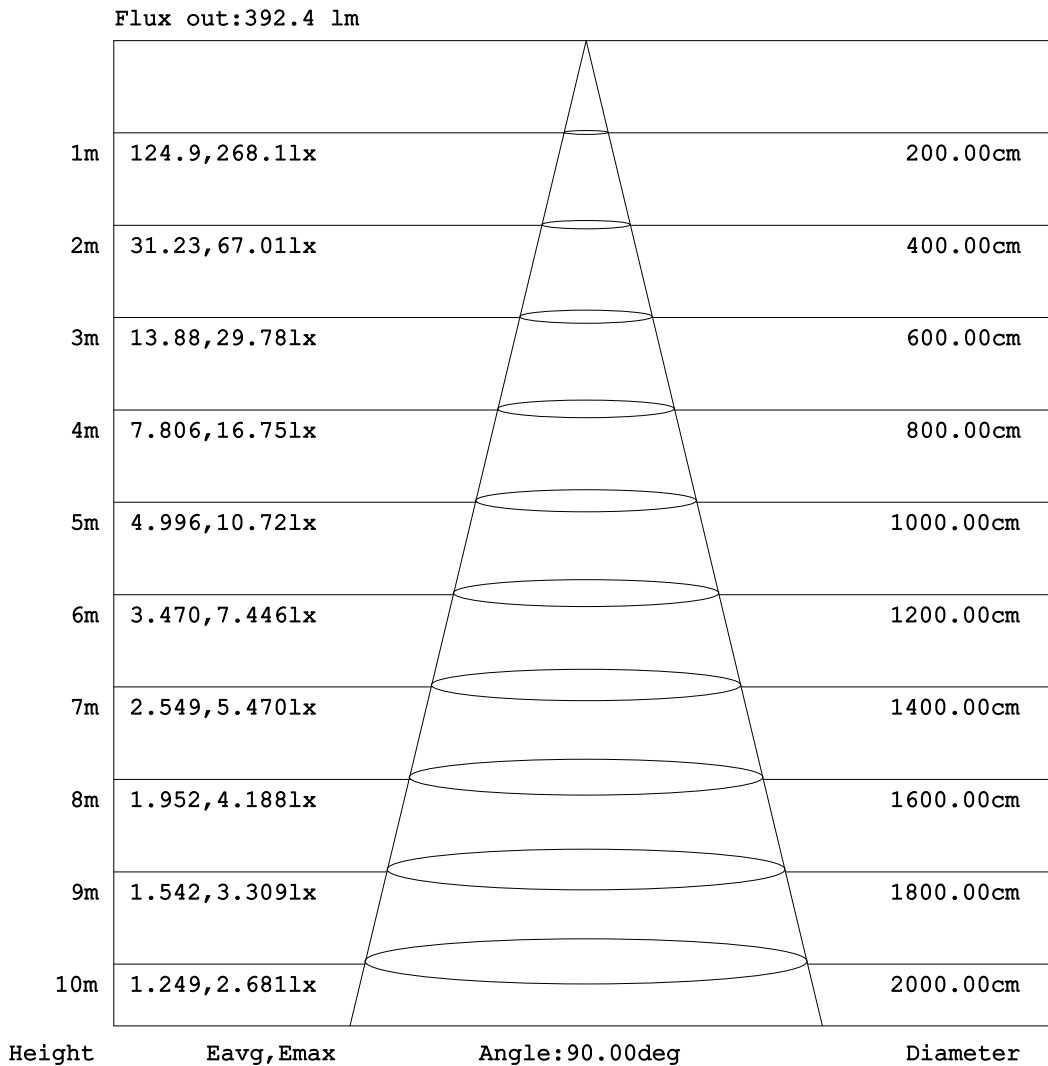


C Range: 0 - 360DEG
C Interval: 22.5DEG
Test Speed: HIGH
Temperature: 25.2°C
Operators: Dano
Test Date: 2023-06-13

γ Range: 0 - 180DEG
γ Interval: 1.0DEG
Test System: EVERFINE GO-R5000_V2 SYSTEM V2.00.459
Humidity: 55.3%
Test Distance: 2.900m [K=0.8810]
Remarks:

AAI Figure

Test:U:119.9V I:0.3195A P:37.89W PF:0.9892 Freq:60.01Hz Lamp Flux:2358.7x1 lm		
NAME: PT07-44-40S-952C5-MVTD-SB002 3000K	TYPE:	WEIGHT:
SPEC.:	DIM.:	SERIAL No.:
MFR.: FOSHAN LEDKEY LIGHTING CO.,LTD.	SUR.:	Shielding Angle:



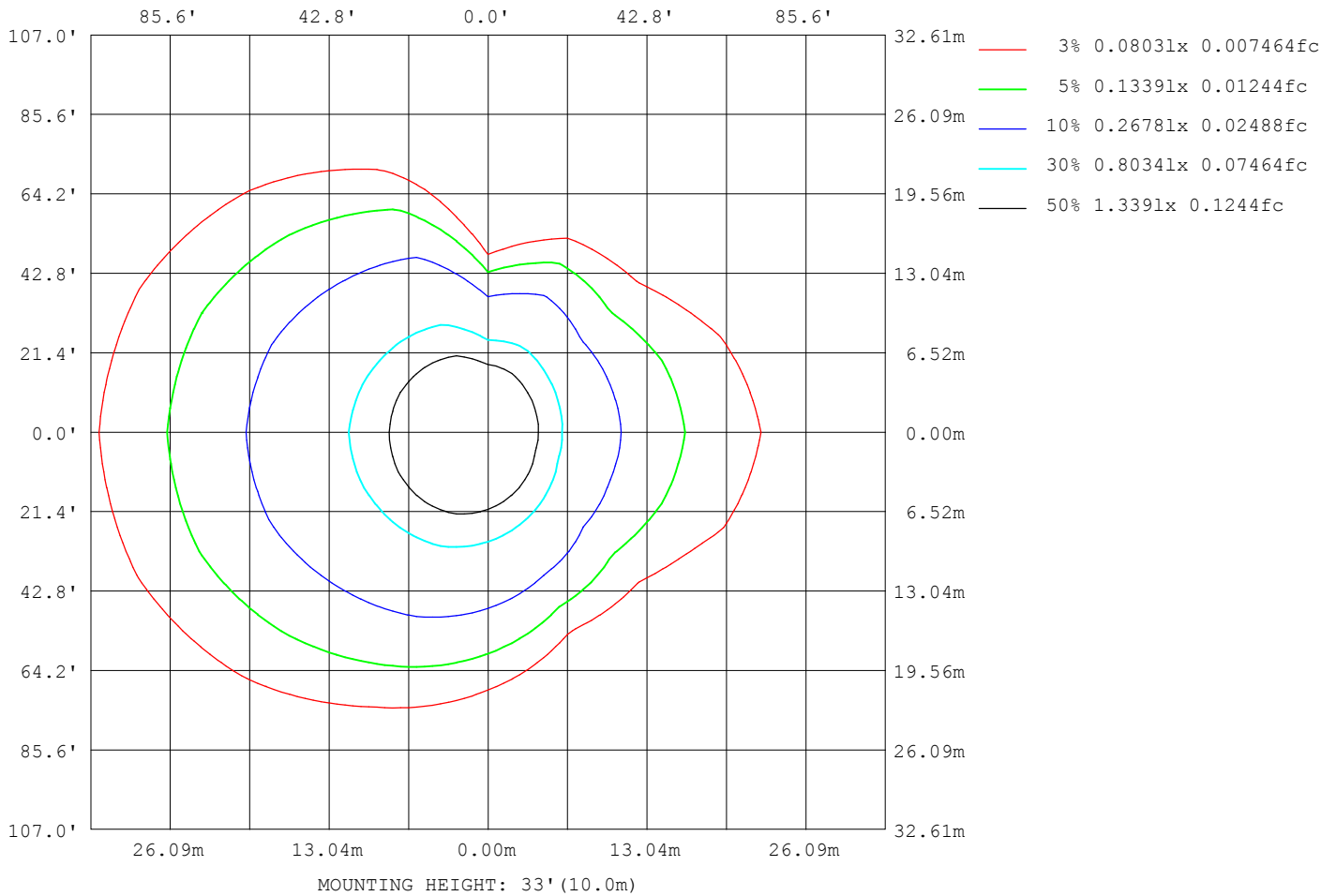
Note:The Curves indicate the illuminated area and the average illumination when the luminaire is at different distance.

C Range: 0 - 360DEG
 C Interval: 22.5DEG
 Test Speed: HIGH
 Temperature:25.2℃
 Operators:Dano
 Test Date:2023-06-13

γ Range: 0 - 180DEG
 γ Interval: 1.0DEG
 Test System:EVERFINE GO-R5000_V2 SYSTEM V2.00.459
 Humidity:55.3%
 Test Distance:2.900m [K=0.8810]
 Remarks:

ISOLUX DIAGRAM

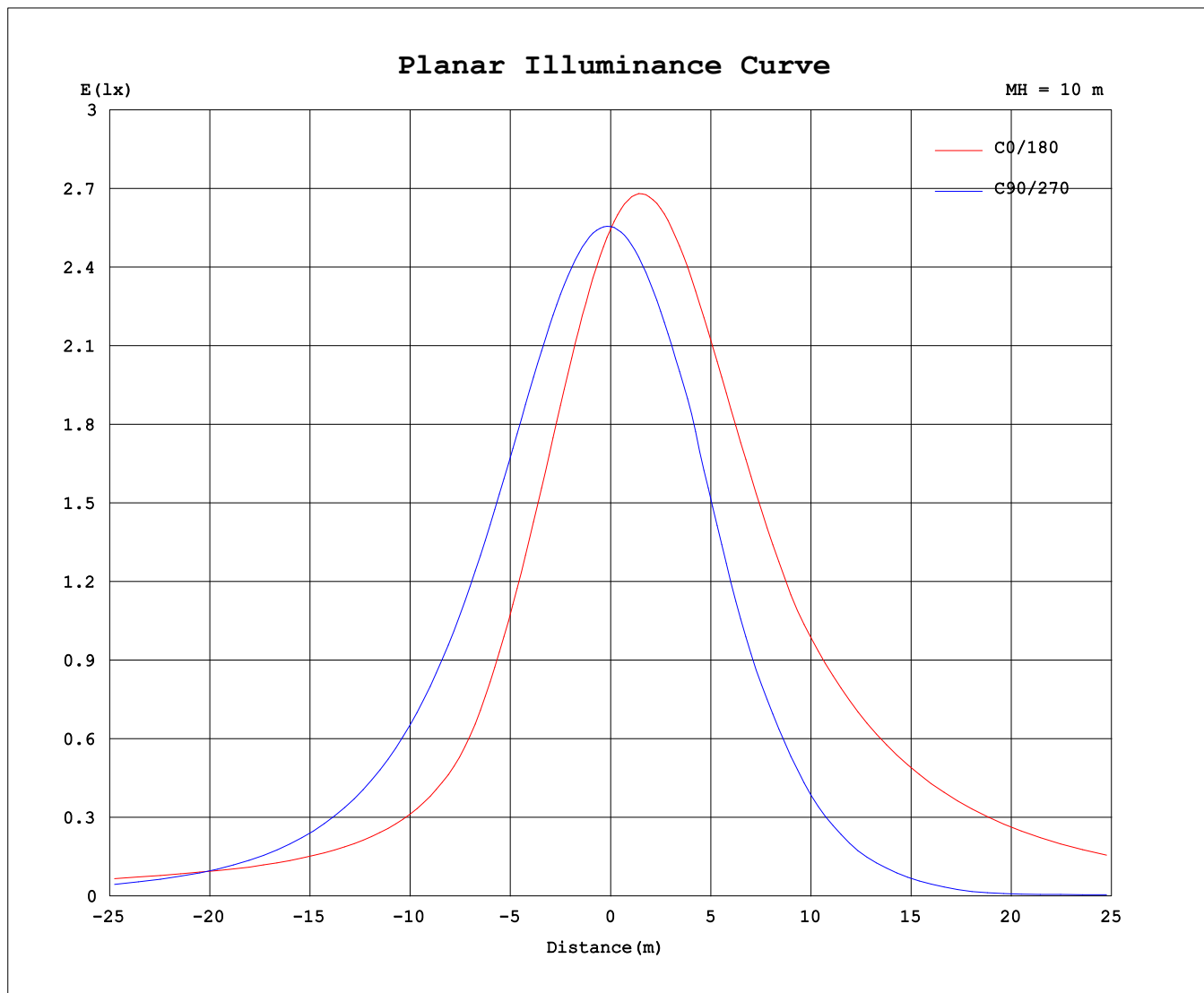
Test:U:119.9V I:0.3195A P:37.89W PF:0.9892 Freq:60.01Hz Lamp Flux:2358.7x1 lm		
NAME: PT07-44-40S-952C5-MVTD-SB002 3000K	TYPE:	WEIGHT:
SPEC.:	DIM.:	SERIAL No.:
MFR.: FOSHAN LEDKEY LIGHTING CO.,LTD.	SUR.:	Shielding Angle:



C Range: 0 - 360DEG
C Interval: 22.5DEG
Test Speed: HIGH
Temperature:25.2°C
Operators:Dano
Test Date:2023-06-13

γ Range: 0 - 180DEG
γ Interval: 1.0DEG
Test System:EVERFINE GO-R5000_V2 SYSTEM V2.00.459
Humidity:55.3%
Test Distance:2.900m [K=0.8810]
Remarks:

Planar Illuminance Curve



C Range: 0 - 360DEG
C Interval: 22.5DEG
Test Speed: HIGH
Temperature: 25.2°C
Operators: Dano
Test Date: 2023-06-13

γ Range: 0 - 180DEG
γ Interval: 1.0DEG
Test System: EVERFINE GO-R5000_V2 SYSTEM V2.00.459
Humidity: 55.3%
Test Distance: 2.900m [K=0.8810]
Remarks:

LUMINOUS DISTRIBUTION INTENSITY DATA

Test:U:119.9V I:0.3195A P:37.89W PF:0.9892 Freq:60.01Hz Lamp Flux:2358.7x1 lm		
NAME: PT07-44-40S-952C5-MVTD-SB002 3000K	TYPE:	WEIGHT:
SPEC.:	DIM.:	SERIAL No.:
MFR.: FOSHAN LEDKEY LIGHTING CO.,LTD.	SUR.:	Shielding Angle:

Table--1

UNIT: cd

C (DEG) γ (DEG)	0	22.5	45	67.5	90	112.5	135	157.5	180	202.5	225	247.5	270	292.5	315	337.5			
0	255	255	255	255	255	255	255	255	255	255	255	255	255	255	255	255			
5	239	240	244	249	255	261	265	267	269	268	263	258	253	247	242	240			
10	221	223	231	242	254	264	273	278	281	278	270	260	249	237	228	223			
15	201	204	217	232	250	266	278	286	289	286	274	259	242	226	212	204			
20	180	184	200	221	244	266	282	291	295	291	275	256	235	213	195	184			
25	158	162	182	208	237	264	283	294	297	293	273	251	218	198	176	163			
30	135	140	163	192	227	260	281	293	296	292	269	243	195	182	157	140			
35	112	117	142	176	215	253	276	289	292	287	263	234	168	165	136	117			
40	96.9	98.7	120	157	201	244	268	282	285	279	254	223	142	146	114	97.4			
45	88.9	88.6	97.7	137	185	232	257	272	279	269	242	209	109	127	92.2	86.9			
50	86.1	83.1	82.0	115	167	218	244	271	282	267	228	194	76.3	106	76.8	81.6			
55	88.2	82.7	71.2	92.7	147	201	232	272	286	268	218	177	47.3	84.6	68.0	81.6			
60	95.8	87.3	65.2	69.2	125	181	226	275	292	271	213	158	20.5	62.8	64.4	86.3			
65	114	103	64.7	49.1	101	160	222	277	296	275	211	138	9.02	43.8	66.5	100.0			
70	137	124	73.0	36.3	76.9	137	219	279	300	278	210	121	12.1	33.3	77.2	122			
75	158	145	91.5	30.7	52.4	121	216	280	302	280	209	109	13.0	30.6	97.6	143			
80	179	165	110	37.8	29.5	109	212	279	302	281	208	101	11.2	40.1	118	164			
85	199	184	127	52.2	10.6	98.6	207	276	301	280	206	94.9	4.88	56.7	137	184			
90	217	201	144	67.0	1.34	91.5	202	272	298	277	203	92.2	0.56	73.6	156	202			
95	234	217	159	81.6	6.91	89.0	196	267	293	273	200	93.4	6.35	89.2	173	219			
100	249	231	174	95.4	23.9	95.2	192	260	287	268	197	101	24.6	105	189	235			
105	261	244	186	108	45.6	111	191	255	282	264	198	118	49.1	121	202	247			
110	271	254	197	120	69.1	126	198	253	278	261	206	133	75.9	133	213	258			
115	278	261	206	130	94.0	140	210	257	276	263	218	147	104	144	222	266			
120	283	266	212	143	119	152	220	265	284	272	228	159	131	157	228	271			
125	284	267	216	156	145	167	227	271	290	279	235	172	157	170	231	273			
130	282	266	218	171	169	183	232	274	292	282	240	188	181	186	232	271			
135	278	262	223	192	191	200	235	274	291	283	243	206	203	202	236	267			
140	270	258	231	209	209	216	238	271	288	281	245	223	223	215	237	261			
145	268	261	239	222	220	232	245	266	281	277	252	239	232	229	235	261			
150	268	264	242	230	218	246	255	266	275	275	261	255	225	234	246	261			
155	269	270	244	213	210	256	262	271	276	277	270	268	221	203	249	255			
160	274	270	225	194	200	256	272	275	279	281	277	278	234	195	223	256			
165	277	253	205	191	185	225	272	281	282	286	286	279	223	198	184	220			
170	278	191	204	206	203	210	257	275	280	285	277	260	210	201	189	187			
175	229	176	214	220	222	215	224	235	242	262	241	230	217	222	214	203			
180	49.3	192	219	232	237	233	209	192	96.5	65.7	197	215	231	235	230	214			

C Range: 0 - 360DEG
 C Interval: 22.5DEG
 Test Speed: HIGH
 Temperature:25.2℃
 Operators:Dano
 Test Date:2023-06-13

γ Range: 0 - 180DEG
 γ Interval: 1.0DEG
 Test System:EVERFINE GO-R5000_V2 SYSTEM V2.00.459
 Humidity:55.3%
 Test Distance:2.900m [K=0.8810]
 Remarks: