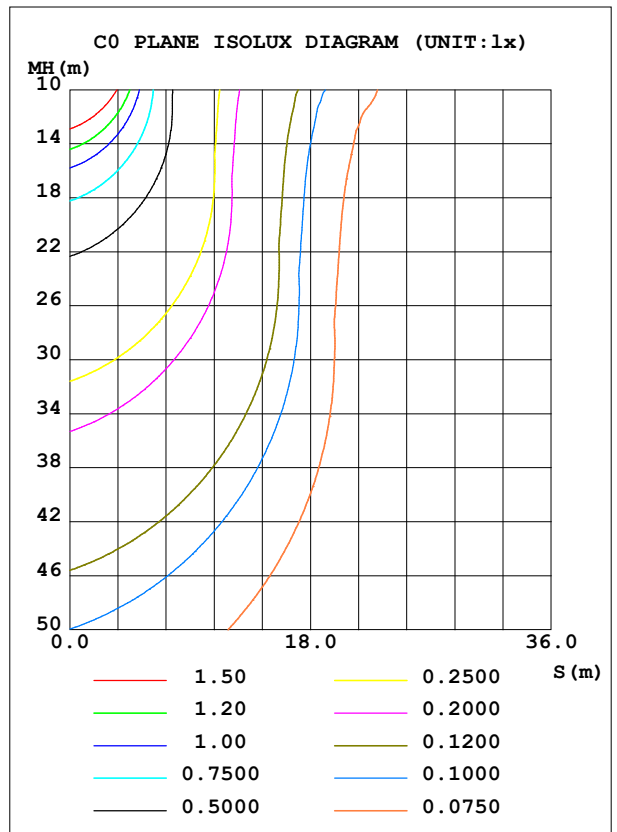
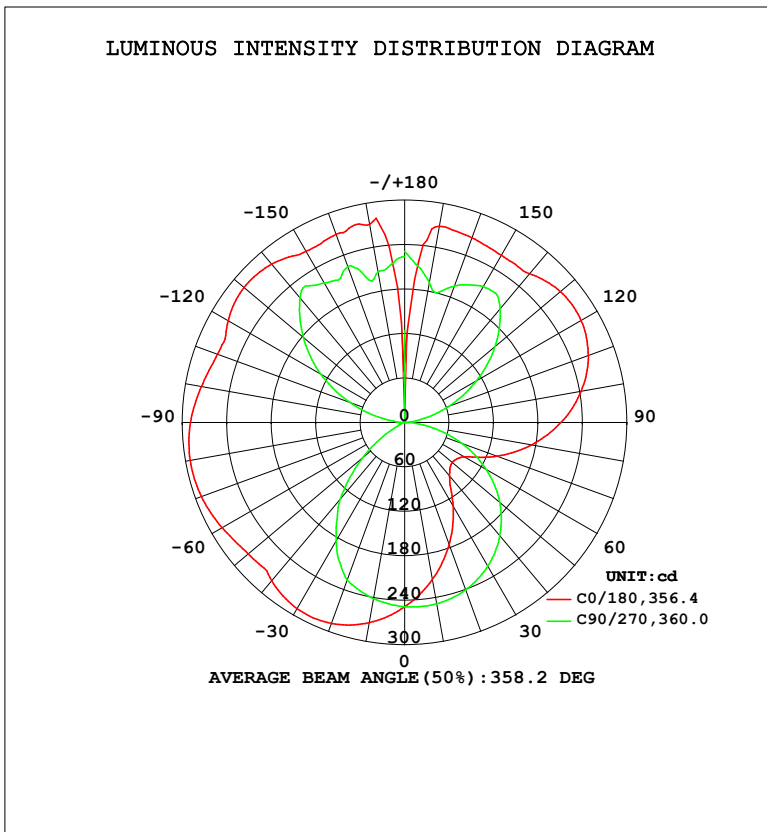


LUMINAIRE PHOTOMETRIC TEST REPORT

Test:U:120.0V I:0.3178A P:37.71W PF:0.9892 Freq:60.01Hz Lamp Flux:2302.97x1 lm		
NAME: PT07-44-40S-952C5-MVTD-SB002 2700K	TYPE:	WEIGHT:
SPEC.:	DIM.:	SERIAL No.:
MFR.: FOSHAN LEDKEY LIGHTING CO.,LTD.	SUR.:	Shielding Angle:

DATA OF LAMP		PHOTOMETRIC DATA				Eff: 61.08 lm/W
MODEL		I _{max} (cd)	294.2	S/MH (C0/180)	1.69	
NOMINAL POWER (W)		LOR (%)	100.0	S/MH (C90/270)	1.13	
RATED VOLTAGE (V)	120	TOTAL FLUX (lm)	2303.0	η UP, DN (C0-180)	26.9, 21.9	
NOMINAL FLUX (lm)	2302.97	CIE CLASS	DIFFUSE	η UP, DN (C180-360)	28.4, 22.8	
LAMPS INSIDE	1	η up (%)	55.3	CIBSE SHR NOM	1.25	
TEST VOLTAGE (V)	120	η down (%)	44.7	CIBSE SHR MAX	1.35	



C Range: 0 - 360DEG
 C Interval: 22.5DEG
 Test Speed: HIGH
 Temperature: 25.2 °C
 Operators: Dano
 Test Date: 2023-06-13

γ Range: 0 - 180DEG
 γ Interval: 1.0DEG
 Test System: EVERFINE GO-R5000_V2 SYSTEM V2.00.459
 Humidity: 55.3%
 Test Distance: 2.900m [K=0.8810]
 Remarks:

ZONAL FLUX DIAGRAM

ZONAL FLUX DIAGRAM:

γ	C0	C45	C90	C135	C180	C225	C270	C315	γ	Φ zone	Φ total	%lum,lamp
10	215.5	225.9	248.5	268.0	274.2	263.5	241.6	221.4	0- 10	23.56	23.56	1.02,1.02
20	175.7	195.7	240.5	278.2	288.6	268.5	226.7	188.0	10- 20	67.66	91.21	3.96,3.96
30	131.3	159.3	224.3	278.1	290.3	263.0	185.0	149.6	20- 30	102.8	194.0	8.43,8.43
40	94.68	117.6	200.0	267.0	279.0	247.5	135.1	107.3	30- 40	123.9	318.0	13.8,13.8
50	84.06	80.27	167.5	244.5	275.9	222.7	73.36	73.45	40- 50	131.6	449.6	19.5,19.5
60	93.62	63.28	127.5	225.4	284.3	206.8	20.39	64.07	50- 60	133.2	582.8	25.3,25.3
70	133.2	70.00	81.34	217.6	292.1	202.9	7.467	81.75	60- 70	136.7	719.6	31.2,31.2
80	174.3	105.5	34.38	211.1	294.0	200.5	4.854	121.6	70- 80	148.2	867.8	37.7,37.7
90	211.1	138.7	1.659	201.0	289.0	195.2	0.6742	158.3	80- 90	161.6	1029	44.7,44.7
100	241.8	167.5	19.00	190.1	278.6	189.8	27.60	189.4	90-100	173.4	1203	52.2,52.2
110	263.8	190.2	62.49	191.9	269.1	198.0	77.37	212.6	100-110	185.6	1388	60.3,60.3
120	275.1	204.9	111.2	214.0	275.1	219.5	131.1	225.8	110-120	193.7	1582	68.7,68.7
130	274.6	210.9	159.3	227.3	283.2	231.5	178.4	228.7	120-130	192.4	1775	77.1,77.1
140	262.1	224.0	200.3	232.1	279.0	236.9	219.7	231.4	130-140	177.7	1952	84.8,84.8
150	260.8	236.3	212.2	247.2	266.7	253.0	217.5	242.1	140-150	150.9	2103	91.3,91.3
160	265.4	217.5	196.0	264.4	270.1	268.7	224.0	209.7	150-160	112.7	2216	96.2,96.2
170	268.8	198.6	191.8	257.1	271.4	267.0	206.7	187.2	160-170	66.29	2282	99.1,99.1
180	81.32	210.8	230.9	212.9	93.80	192.4	224.0	225.8	170-180	21.00	2303	100,100
DEG	LUMINOUS INTENSITY:cd									UNIT:lm		

Conical surface Flux(90deg): 383.45 lm

%lum = 16.7%

%lamp = 16.7%

Conical surface Flux(120deg): 582.84 lm

%lum = 25.3%

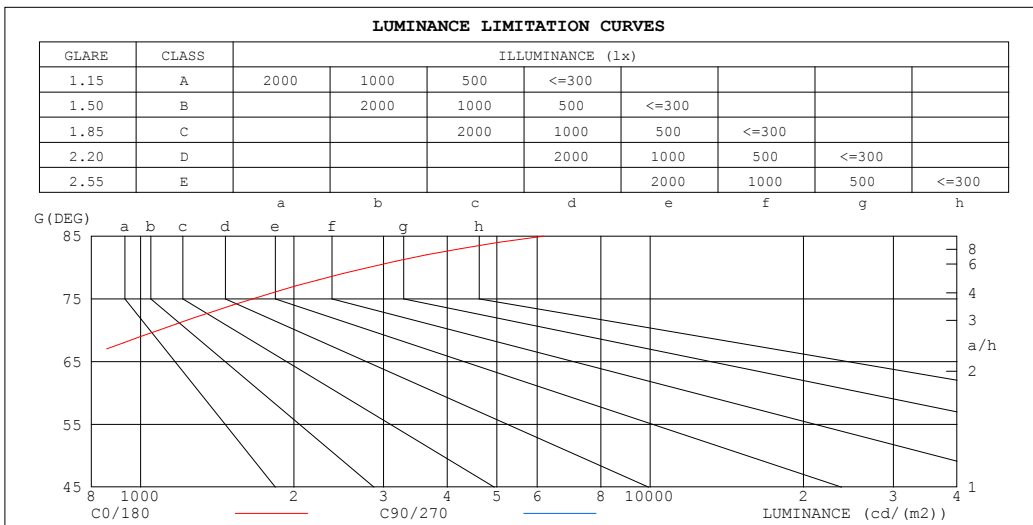
%lamp = 25.3%

C Range: 0 - 360DEG
 C Interval: 22.5DEG
 Test Speed: HIGH
 Temperature:25.2℃
 Operators:Dano
 Test Date:2023-06-13

γ Range: 0 - 180DEG
 γ Interval: 1.0DEG
 Test System:EVERFINE GO-R5000_V2 SYSTEM V2.00.459
 Humidity:55.3%
 Test Distance:2.900m [K=0.8810]
 Remarks:

LUMINANCE LIMITATION CURVES

Test:U:120.0V I:0.3178A P:37.71W PF:0.9892 Freq:60.01Hz Lamp Flux:2302.97x1 lm		
NAME: PT07-44-40S-952C5-MVTD-SB002 2700K	TYPE:	WEIGHT:
SPEC.:	DIM.:	SERIAL No.:
MFR.: FOSHAN LEDKEY LIGHTING CO.,LTD.	SUR.:	Shielding Angle:



LUMINANCE cd/(m2)		
G (DEG)	C0/180	C90/270
85	6178	460
80	2796	552
75	1659	619
70	1085	664
65	736	694
60	522	712
55	419	722
50	364	727
45	342	729

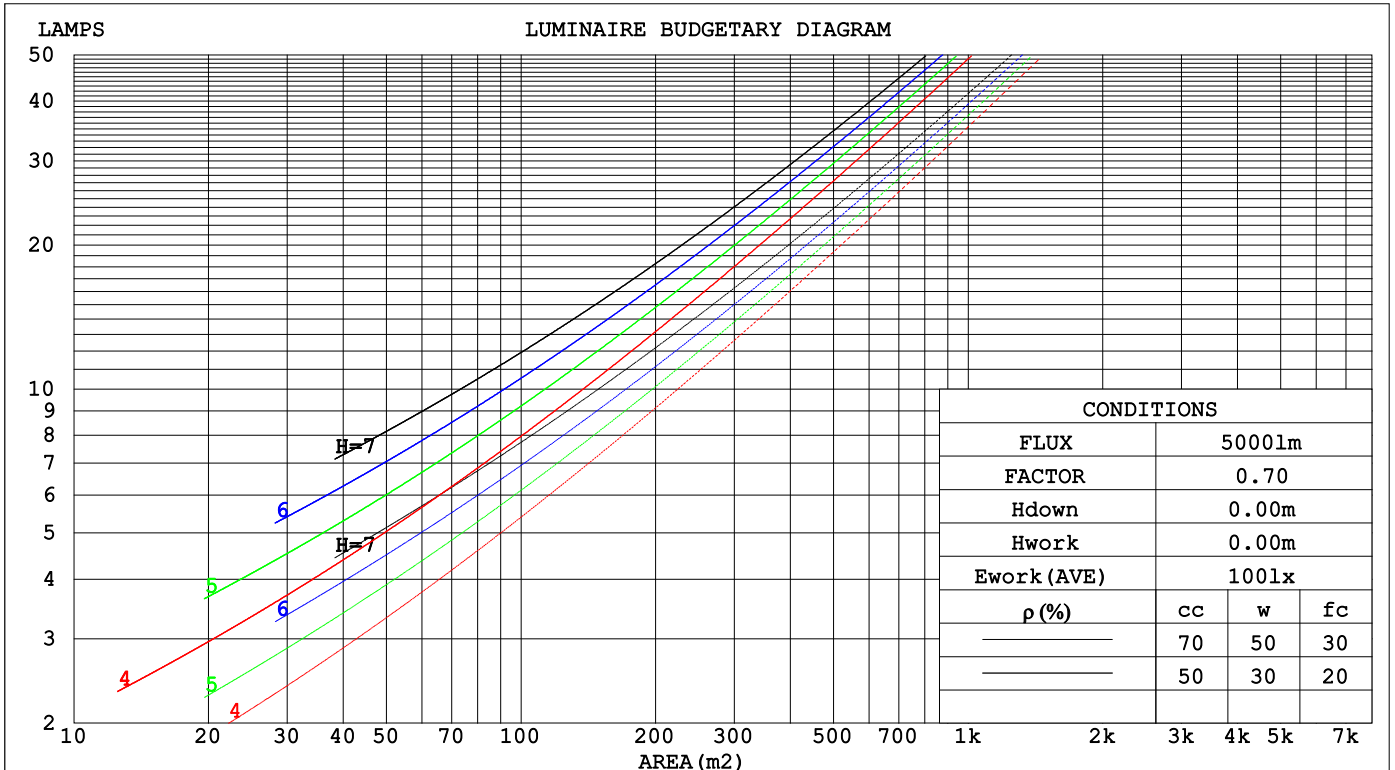
C Range: 0 - 360DEG
 C Interval: 22.5DEG
 Test Speed: HIGH
 Temperature:25.2℃
 Operators:Dano
 Test Date:2023-06-13

γ Range: 0 - 180DEG
 γ Interval: 1.0DEG
 Test System:EVERFINE GO-R5000_V2 SYSTEM V2.00.459
 Humidity:55.3%
 Test Distance:2.900m [K=0.8810]
 Remarks:

CU AND LUMINAIRE BUDGETARY ESTIMATE DIAGRAM

Test:U:120.0V I:0.3178A P:37.71W PF:0.9892 Freq:60.01Hz Lamp Flux:2302.97x1 lm		
NAME: PT07-44-40S-952C5-MVTD-SB002 2700K	TYPE:	WEIGHT:
SPEC.:	DIM.:	SERIAL No.:
MFR.: FOSHAN LEDKEY LIGHTING CO.,LTD.	SUR.:	Shielding Angle:

ρcc	80%			70%			50%			30%			10%			0
ρw	50%	30%	10%	50%	30%	10%	50%	30%	10%	50%	30%	10%	50%	30%	10%	0
ρfc	20%			20%			20%			20%			20%			0
RCR	RCR:Room Cavity Ratio						Coefficients of Utilization(CU)									
0.0	1.06	1.06	1.06	.97	.97	.97	.80	.80	.80	.65	.65	.65	.51	.51	.51	.45
1.0	.88	.83	.78	.80	.76	.72	.66	.62	.59	.53	.50	.48	.40	.39	.37	.31
2.0	.75	.68	.62	.69	.62	.57	.56	.51	.47	.45	.41	.38	.34	.32	.29	.24
3.0	.65	.57	.51	.60	.52	.47	.49	.43	.39	.39	.35	.31	.30	.27	.24	.20
4.0	.58	.49	.42	.53	.45	.39	.43	.37	.32	.34	.30	.26	.26	.23	.20	.16
5.0	.51	.42	.36	.47	.39	.33	.38	.32	.28	.31	.26	.22	.23	.20	.17	.14
6.0	.46	.37	.31	.42	.34	.28	.34	.28	.24	.28	.23	.19	.21	.18	.15	.12
7.0	.41	.33	.27	.38	.30	.25	.31	.25	.21	.25	.20	.17	.19	.16	.13	.10
8.0	.37	.29	.23	.34	.27	.22	.28	.22	.18	.23	.18	.15	.18	.14	.12	.09
9.0	.34	.26	.21	.31	.24	.19	.26	.20	.16	.21	.17	.13	.16	.13	.11	.08
10.0	.31	.23	.18	.28	.22	.17	.24	.18	.15	.19	.15	.12	.15	.12	.10	.08



C Range: 0 - 360DEG
 C Interval: 22.5DEG
 Test Speed: HIGH
 Temperature:25.2°C
 Operators:Dano
 Test Date:2023-06-13

γ Range: 0 - 180DEG
 γ Interval: 1.0DEG
 Test System:EVERFINE GO-R5000_V2 SYSTEM V2.00.459
 Humidity:55.3%
 Test Distance:2.900m [K=0.8810]
 Remarks:

WEC AND CCEC

Test:U:120.0V I:0.3178A P:37.71W PF:0.9892 Freq:60.01Hz Lamp Flux:2302.97x1 lm		
NAME: PT07-44-40S-952C5-MVTD-SB002 2700K	TYPE:	WEIGHT:
SPEC.:	DIM.:	SERIAL No.:
MFR.: FOSHAN LEDKEY LIGHTING CO.,LTD.	SUR.:	Shielding Angle:

ρcc	80%			70%			50%			30%			10%			0
ρw	50%	30%	10%	50%	30%	10%	50%	30%	10%	50%	30%	10%	50%	30%	10%	0
ρfc	20%			20%			20%			20%			20%			0
RCR	RCR:Room Cavity Ratio						Wall Exitance Coefficients(WEC)									
0.0																
1.0	.362	.206	.065	.338	.193	.061	.294	.168	.054	.252	.146	.047	.215	.124	.040	
2.0	.309	.169	.052	.287	.158	.049	.246	.137	.042	.208	.117	.037	.173	.098	.031	
3.0	.273	.145	.043	.253	.135	.041	.216	.117	.036	.181	.099	.030	.149	.082	.025	
4.0	.246	.128	.038	.227	.119	.035	.193	.102	.031	.161	.086	.026	.131	.071	.022	
5.0	.223	.114	.033	.207	.106	.031	.175	.091	.027	.145	.077	.023	.118	.063	.019	
6.0	.205	.103	.029	.190	.096	.028	.160	.082	.024	.133	.069	.020	.107	.056	.017	
7.0	.189	.094	.027	.175	.087	.025	.148	.075	.022	.122	.063	.018	.099	.051	.015	
8.0	.176	.086	.024	.163	.080	.023	.137	.069	.020	.114	.058	.017	.091	.047	.014	
9.0	.164	.079	.022	.152	.074	.021	.128	.063	.018	.106	.053	.015	.085	.043	.012	
10.0	.154	.074	.020	.142	.069	.019	.120	.059	.017	.099	.049	.014	.080	.040	.011	

ρcc	80%			70%			50%			30%			10%			0
ρw	50%	30%	10%	50%	30%	10%	50%	30%	10%	50%	30%	10%	50%	30%	10%	0
ρfc	20%			20%			20%			20%			20%			0
RCR	RCR:Room Cavity Ratio						Ceiling Cavity Exitance Coefficients(CCEC)									
0.0	.612	.612	.612	.523	.523	.523	.357	.357	.357	.205	.205	.205	.066	.066	.066	
1.0	.609	.581	.555	.521	.498	.478	.356	.343	.330	.205	.198	.192	.066	.064	.062	
2.0	.602	.559	.524	.516	.482	.453	.353	.333	.316	.204	.194	.185	.065	.063	.060	
3.0	.595	.544	.504	.510	.470	.437	.350	.326	.306	.202	.190	.181	.065	.062	.059	
4.0	.588	.533	.491	.504	.460	.426	.347	.321	.300	.201	.188	.178	.065	.061	.058	
5.0	.581	.524	.482	.499	.453	.419	.344	.317	.296	.199	.186	.176	.064	.061	.058	
6.0	.574	.516	.475	.493	.447	.414	.340	.313	.293	.197	.184	.174	.064	.060	.057	
7.0	.568	.510	.470	.488	.442	.410	.337	.310	.290	.196	.183	.173	.063	.060	.057	
8.0	.562	.505	.467	.483	.438	.407	.334	.308	.289	.195	.182	.172	.063	.060	.057	
9.0	.556	.501	.464	.479	.435	.405	.332	.306	.287	.193	.180	.171	.063	.059	.057	
10.0	.551	.497	.461	.475	.432	.403	.329	.304	.286	.192	.180	.171	.062	.059	.057	

C Range: 0 - 360DEG
 C Interval: 22.5DEG
 Test Speed: HIGH
 Temperature:25.2℃
 Operators:Dano
 Test Date:2023-06-13

γ Range: 0 - 180DEG
 γ Interval: 1.0DEG
 Test System:EVERFINE GO-R5000_V2 SYSTEM V2.00.459
 Humidity:55.3%
 Test Distance:2.900m [K=0.8810]
 Remarks:

UGR(Unified Glare Rating) Table

Test:U:120.0V I:0.3178A P:37.71W PF:0.9892 Freq:60.01Hz										
Lamp Flux:2302.97x1 lm										
NAME: PT07-44-40S-952C5-MVTD-SB002 2700K					TYPE:			WEIGHT:		
SPEC.:					DIM.:			SERIAL No.:		
MFR.: FOSHAN LEDKEY LIGHTING CO.,LTD.					SUR.:			Shielding Angle:		
ceiling/cavity	0.7	0.7	0.5	0.5	0.3	0.7	0.7	0.5	0.5	0.3
walls	0.5	0.3	0.5	0.3	0.3	0.5	0.3	0.5	0.3	0.3
working plane	0.2	0.2	0.2	0.2	0.2	0.2	0.2	0.2	0.2	0.2
Room dimensions	Viewed crosswise					Viewed endwise				
x = 2H y = 2H	0.2	2.1	2.1	4.0	6.6	5.7	7.6	7.6	9.5	12.1
3H	5.5	7.2	7.4	9.1	11.7	7.2	8.9	9.1	10.8	13.4
4H	8.2	9.8	10.2	11.8	14.4	7.7	9.3	9.6	11.3	13.9
6H	11.1	12.6	13.0	14.6	17.2	8.0	9.5	10.0	11.5	14.1
8H	12.6	14.0	14.6	16.0	18.7	8.0	9.5	10.0	11.5	14.2
12H	14.2	15.6	16.2	17.6	20.3	8.0	9.4	10.0	11.4	14.1
4H 2H	0.2	1.8	2.2	3.8	6.4	6.7	8.3	8.6	10.3	12.9
3H	5.8	7.2	7.8	9.2	11.9	8.6	10.0	10.6	12.0	14.7
4H	8.8	10.1	10.9	12.2	14.9	9.4	10.7	11.4	12.7	15.4
6H	12.0	13.1	14.0	15.2	17.9	10.0	11.1	12.0	13.2	15.9
8H	13.6	14.7	15.7	16.8	19.5	10.1	11.2	12.2	13.3	16.0
12H	15.4	16.4	17.5	18.5	21.3	10.2	11.2	12.3	13.3	16.1
8H 4H	9.0	10.0	11.0	12.1	14.9	10.9	12.0	12.9	14.0	16.8
6H	12.5	13.4	14.6	15.5	18.3	12.0	12.9	14.1	15.0	17.8
8H	14.4	15.2	16.5	17.4	20.2	12.5	13.3	14.6	15.4	18.2
12H	16.5	17.2	18.7	19.4	22.3	12.8	13.5	14.9	15.7	18.5
12H 4H	8.9	9.9	11.0	12.0	14.8	11.4	12.4	13.5	14.5	17.3
6H	12.6	13.4	14.7	15.5	18.3	12.9	13.7	15.0	15.8	18.7
8H	14.6	15.3	16.7	17.5	20.3	13.6	14.3	15.7	16.4	19.3
CIE190: 2010										

CIE190: 2010
Area: 0.36 m2

C Range: 0 - 360DEG
C Interval: 22.5DEG
Test Speed: HIGH
Temperature:25.2℃
Operators:Dano
Test Date:2023-06-13

γ Range: 0 - 180DEG
γ Interval: 1.0DEG
Test System:EVERFINE GO-R5000_V2 SYSTEM V2.00.459
Humidity:55.3%
Test Distance:2.900m [K=0.8810]
Remarks:

UTILIZATION FACTORS TABLE

Test:U:120.0V I:0.3178A P:37.71W PF:0.9892 Freq:60.01Hz Lamp Flux:2302.97x1 lm		
NAME: PT07-44-40S-952C5-MVTD-SB002 2700K	TYPE:	WEIGHT:
SPEC.:	DIM.:	SERIAL No.:
MFR.: FOSHAN LEDKEY LIGHTING CO.,LTD.	SUR.:	Shielding Angle:

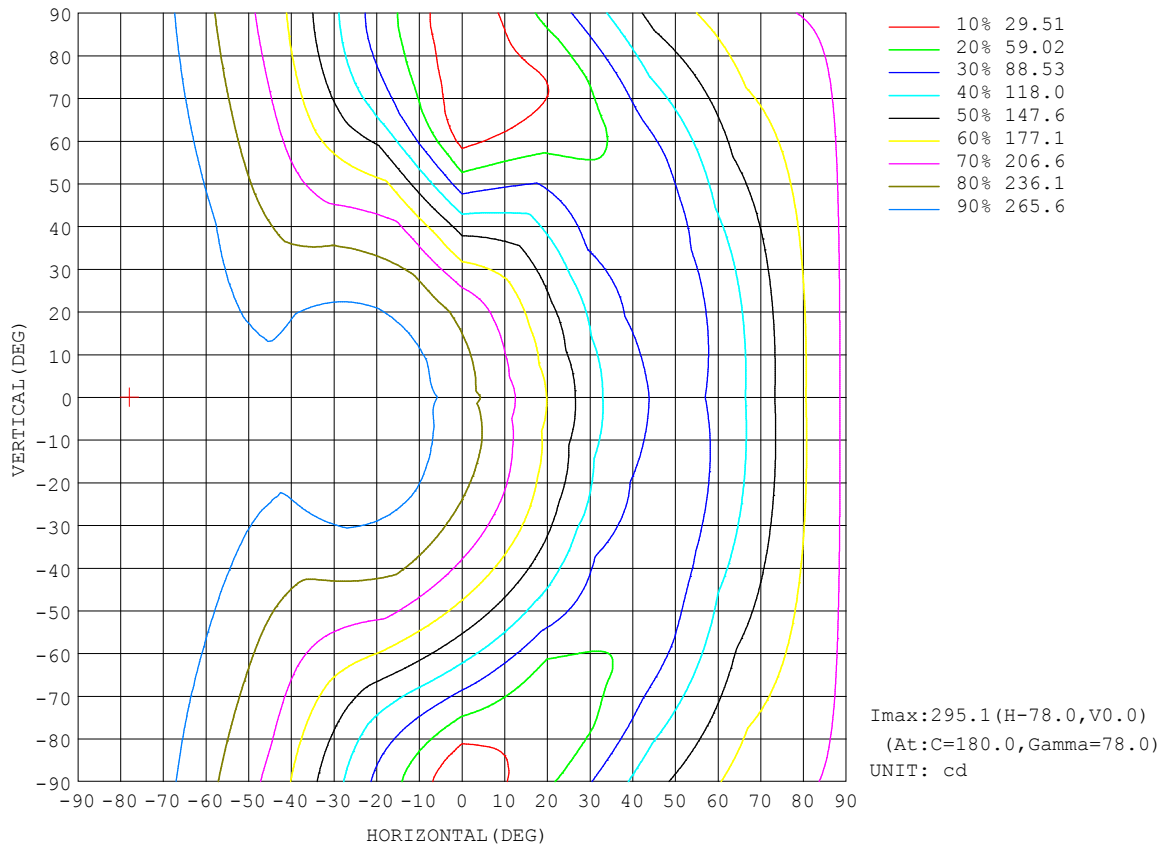
REFLECTANCE										
Ceiling	0.8	0.8	0.8	0.7	0.7	0.7	0.5	0.5	0.5	0
Walls	0.7	0.5	0.3	0.7	0.5	0.3	0.7	0.5	0.3	0
Working plane	0.2	0.2	0.2	0.2	0.2	0.2	0.2	0.2	0.2	0
ROOM INDEX	UTILIZATION FACTORS (PERCENT) $k(RI) \times RCR = 5$									
k = 0.60	38	27	20	36	25	19	32	23	17	10
0.80	47	34	26	44	32	25	38	29	23	13
1.00	54	41	33	50	39	31	43	35	28	16
1.25	61	48	39	56	45	37	48	39	33	18
1.50	66	53	44	61	50	42	52	43	37	20
2.00	73	62	53	67	57	49	57	49	43	24
2.50	78	67	59	72	62	55	60	53	47	26
3.00	82	72	64	75	66	59	63	56	51	28
4.00	87	78	71	79	72	66	66	61	56	30
5.00	90	83	76	82	76	70	68	64	59	32
ROOM INDEX	UF(total)									Direct
According to DIN EN 13032-2 2004			Suspended				SHRNOM = 1.25			

C Range: 0 - 360DEG
 C Interval: 22.5DEG
 Test Speed: HIGH
 Temperature:25.2°C
 Operators:Dano
 Test Date:2023-06-13

γ Range: 0 - 180DEG
 γ Interval: 1.0DEG
 Test System:EVERFINE GO-R5000_V2 SYSTEM V2.00.459
 Humidity:55.3%
 Test Distance:2.900m [K=0.8810]
 Remarks:

ISOCANDELA DIAGRAM

Test:U:120.0V I:0.3178A P:37.71W PF:0.9892 Freq:60.01Hz Lamp Flux:2302.97x1 lm		
NAME: PT07-44-40S-952C5-MVTD-SB002 2700K	TYPE:	WEIGHT:
SPEC.:	DIM.:	SERIAL No.:
MFR.: FOSHAN LEDKEY LIGHTING CO.,LTD.	SUR.:	Shielding Angle:

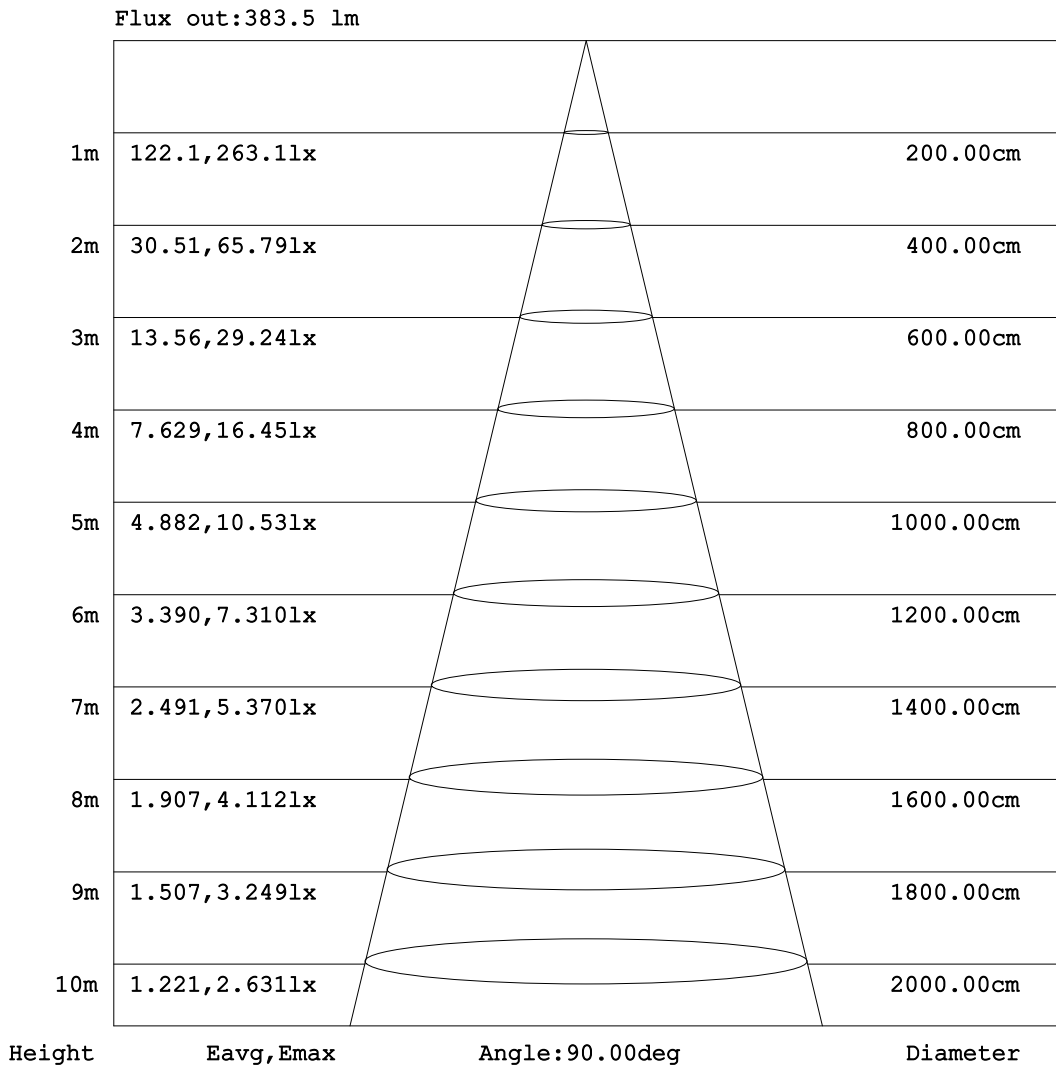


C Range: 0 - 360DEG
C Interval: 22.5DEG
Test Speed: HIGH
Temperature:25.2°C
Operators:Dano
Test Date:2023-06-13

γ Range: 0 - 180DEG
γ Interval: 1.0DEG
Test System:EVERFINE GO-R5000_V2 SYSTEM V2.00.459
Humidity:55.3%
Test Distance:2.900m [K=0.8810]
Remarks:

AAI Figure

Test:U:120.0V I:0.3178A P:37.71W PF:0.9892 Freq:60.01Hz Lamp Flux:2302.97x1 lm		
NAME: PT07-44-40S-952C5-MVTD-SB002 2700K	TYPE:	WEIGHT:
SPEC.:	DIM.:	SERIAL No.:
MFR.: FOSHAN LEDKEY LIGHTING CO.,LTD.	SUR.:	Shielding Angle:



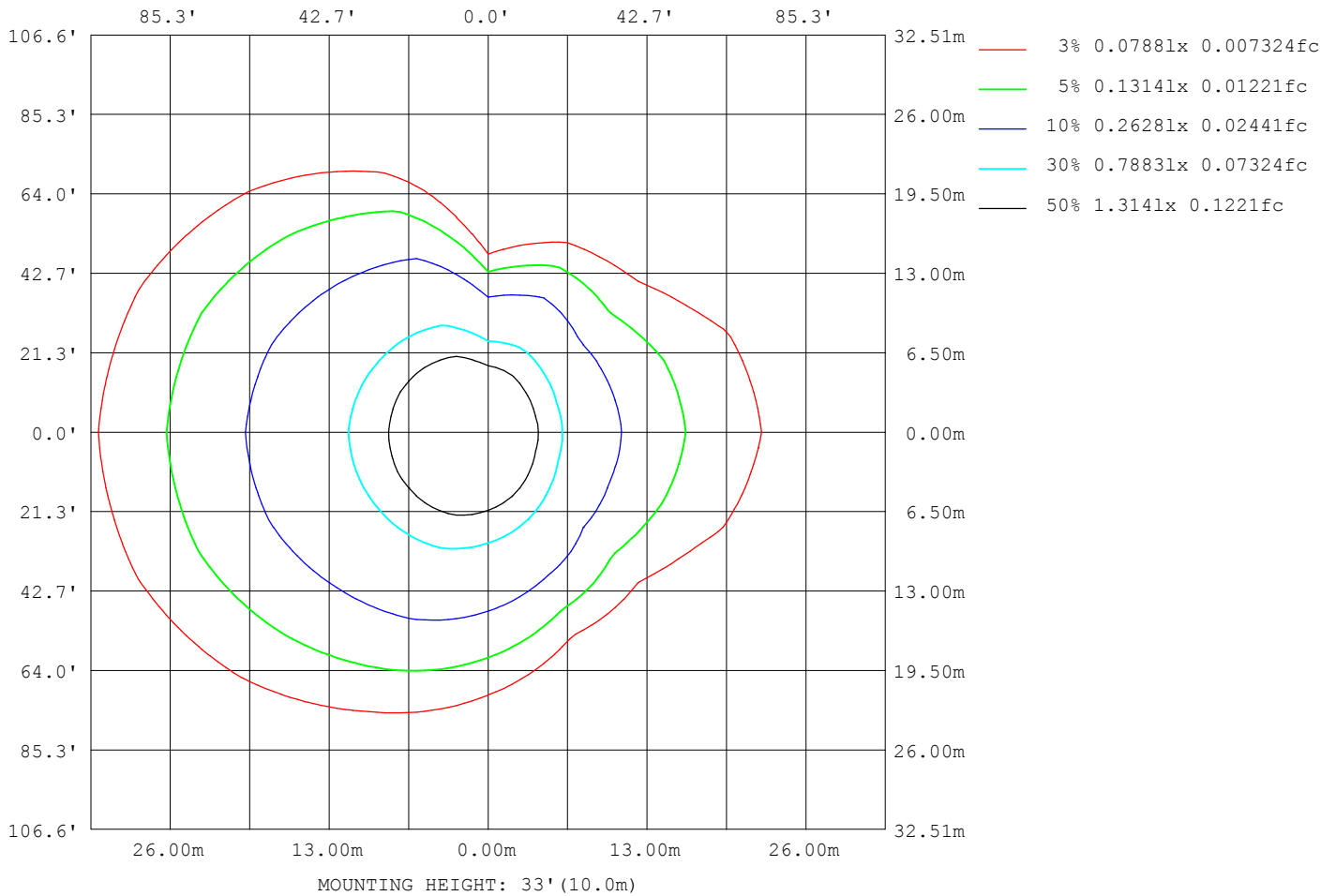
Note:The Curves indicate the illuminated area and the average illumination when the luminaire is at different distance.

C Range: 0 - 360DEG
 C Interval: 22.5DEG
 Test Speed: HIGH
 Temperature:25.2°C
 Operators:Dano
 Test Date:2023-06-13

γ Range: 0 - 180DEG
 γ Interval: 1.0DEG
 Test System:EVERFINE GO-R5000_V2 SYSTEM V2.00.459
 Humidity:55.3%
 Test Distance:2.900m [K=0.8810]
 Remarks:

ISOLUX DIAGRAM

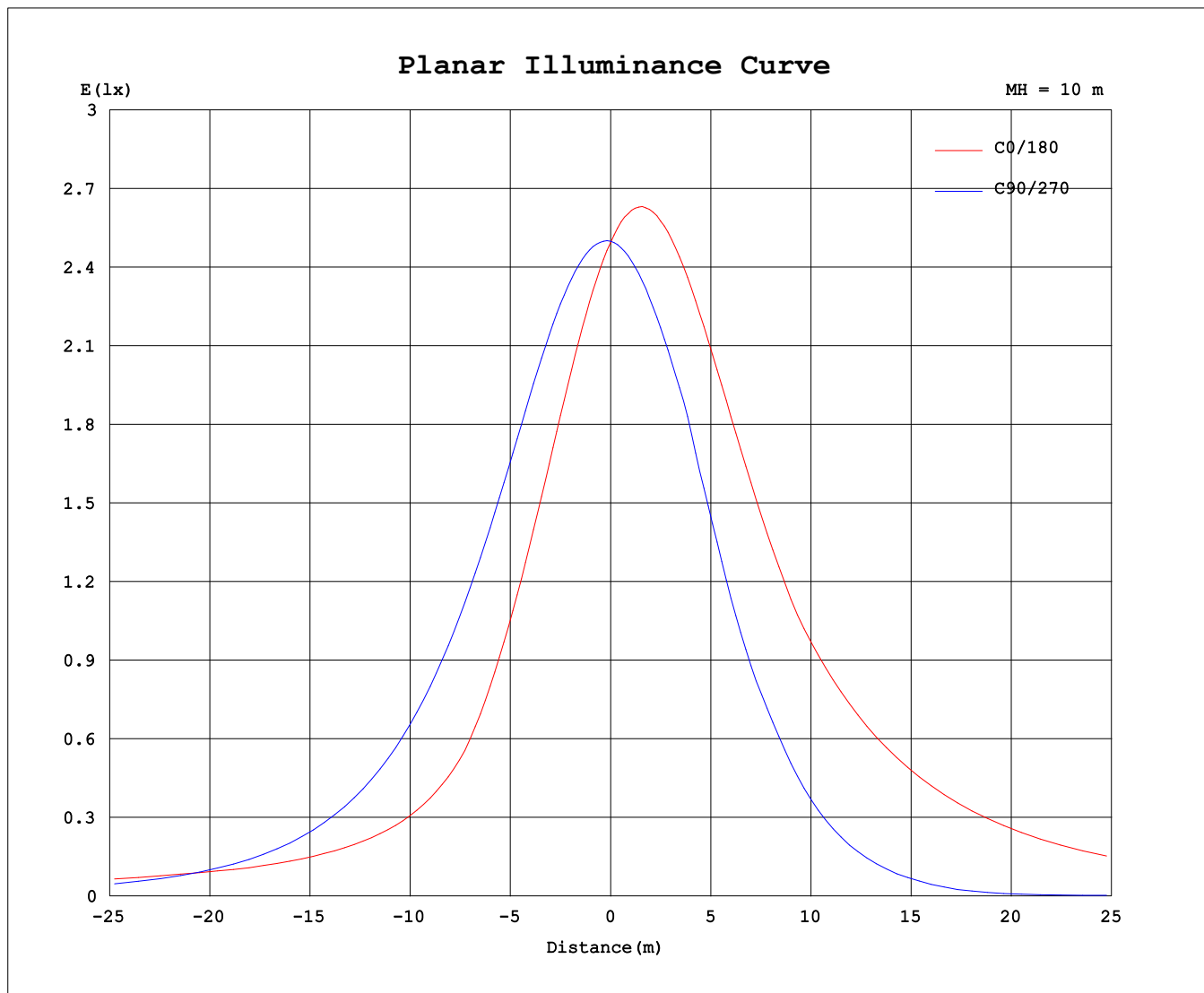
Test:U:120.0V I:0.3178A P:37.71W PF:0.9892 Freq:60.01Hz Lamp Flux:2302.97x1 lm		
NAME: PT07-44-40S-952C5-MVTD-SB002 2700K	TYPE:	WEIGHT:
SPEC.:	DIM.:	SERIAL No.:
MFR.: FOSHAN LEDKEY LIGHTING CO.,LTD.	SUR.:	Shielding Angle:



C Range: 0 - 360DEG
 C Interval: 22.5DEG
 Test Speed: HIGH
 Temperature:25.2°C
 Operators:Dano
 Test Date:2023-06-13

γ Range: 0 - 180DEG
 γ Interval: 1.0DEG
 Test System:EVERFINE GO-R5000_V2 SYSTEM V2.00.459
 Humidity:55.3%
 Test Distance:2.900m [K=0.8810]
 Remarks:

Planar Illuminance Curve



C Range: 0 - 360DEG
C Interval: 22.5DEG
Test Speed: HIGH
Temperature: 25.2°C
Operators: Dano
Test Date: 2023-06-13

γ Range: 0 - 180DEG
γ Interval: 1.0DEG
Test System: EVERFINE GO-R5000_V2 SYSTEM V2.00.459
Humidity: 55.3%
Test Distance: 2.900m [K=0.8810]
Remarks:

LUMINOUS DISTRIBUTION INTENSITY DATA

Test:U:120.0V I:0.3178A P:37.71W PF:0.9892 Freq:60.01Hz Lamp Flux:2302.97x1 lm		
NAME: PT07-44-40S-952C5-MVTD-SB002 2700K	TYPE:	WEIGHT:
SPEC.:	DIM.:	SERIAL No.:
MFR.: FOSHAN LEDKEY LIGHTING CO.,LTD.	SUR.:	Shielding Angle:

Table--1

UNIT: cd

C (DEG) γ (DEG)	0	22.5	45	67.5	90	112.5	135	157.5	180	202.5	225	247.5	270	292.5	315	337.5			
0	249	249	249	249	249	249	249	249	249	249	249	249	249	249	249	249			
5	233	234	238	244	250	255	260	262	263	261	257	252	246	240	236	233			
10	215	217	226	237	249	260	268	273	274	272	263	253	242	230	221	216			
15	196	199	212	228	246	262	274	282	283	279	267	251	235	218	205	197			
20	176	179	196	218	241	263	278	288	289	284	268	248	227	205	188	177			
25	154	158	178	205	233	262	280	291	291	286	267	242	208	190	169	155			
30	131	136	159	191	224	258	278	290	290	285	263	235	185	174	150	133			
35	109	114	139	175	213	253	274	287	286	280	257	225	159	157	129	110			
40	94.7	96.3	118	157	200	244	267	280	279	273	247	213	135	138	107	93.2			
45	86.9	86.4	95.9	138	185	233	257	271	274	263	236	200	104	119	85.8	84.2			
50	84.1	80.8	80.3	118	168	219	245	268	276	260	223	185	73.4	98.4	73.5	80.2			
55	86.3	80.4	69.5	95.7	148	203	231	269	280	261	212	168	45.6	77.2	66.0	81.4			
60	93.6	84.7	63.3	73.0	128	185	225	271	284	263	207	150	20.4	55.8	64.1	87.3			
65	112	99.8	62.5	51.5	105	164	221	274	289	267	204	130	8.56	40.1	67.6	104			
70	133	120	70.0	37.3	81.3	141	218	276	292	270	203	113	7.47	31.9	81.7	125			
75	154	140	87.9	29.7	57.4	125	215	277	294	272	202	102	6.75	31.7	102	146			
80	174	160	106	32.5	34.4	112	211	276	294	272	201	94.0	4.85	44.4	122	166			
85	193	178	123	46.0	14.4	101	207	273	292	271	198	88.8	2.25	60.8	141	186			
90	211	195	139	60.2	1.66	93.2	201	269	289	268	195	86.8	0.67	77.3	158	203			
95	227	210	154	74.3	4.39	89.3	195	264	284	264	192	88.9	8.66	92.6	175	220			
100	242	224	168	87.8	19.0	92.1	190	258	279	259	190	99.4	27.6	108	189	234			
105	254	236	180	100	39.6	106	188	252	273	255	191	115	51.1	122	202	247			
110	264	246	190	112	62.5	121	192	249	269	252	198	129	77.4	134	213	256			
115	271	253	199	122	86.8	134	204	249	267	253	210	142	105	145	221	263			
120	275	258	205	134	111	147	214	258	275	262	219	154	131	156	226	267			
125	276	259	209	149	136	159	222	265	281	269	227	168	155	170	229	268			
130	275	258	211	162	159	175	227	269	283	273	231	184	178	186	229	267			
135	270	254	216	182	181	191	230	269	283	273	234	202	200	199	233	262			
140	262	251	224	198	200	206	232	267	279	272	237	218	220	212	231	257			
145	260	254	232	211	213	222	238	262	273	268	244	234	225	225	234	257			
150	261	258	236	221	212	236	247	260	267	266	253	248	217	225	242	255			
155	263	262	235	210	205	248	255	263	267	268	262	260	212	193	242	252			
160	265	263	217	191	196	251	264	268	270	272	269	269	224	189	210	246			
165	267	245	199	184	182	228	265	274	274	274	277	265	203	189	177	208			
170	269	186	199	196	192	198	257	274	271	275	267	247	207	199	187	184			
175	219	172	208	210	212	207	228	246	238	257	233	216	214	219	210	201			
180	81.3	188	211	226	231	227	213	192	93.8	72.7	192	210	224	229	226	210			

C Range: 0 - 360DEG
 C Interval: 22.5DEG
 Test Speed: HIGH
 Temperature:25.2℃
 Operators:Dano
 Test Date:2023-06-13

γ Range: 0 - 180DEG
 γ Interval: 1.0DEG
 Test System:EVERFINE GO-R5000_V2 SYSTEM V2.00.459
 Humidity:55.3%
 Test Distance:2.900m [K=0.8810]
 Remarks: