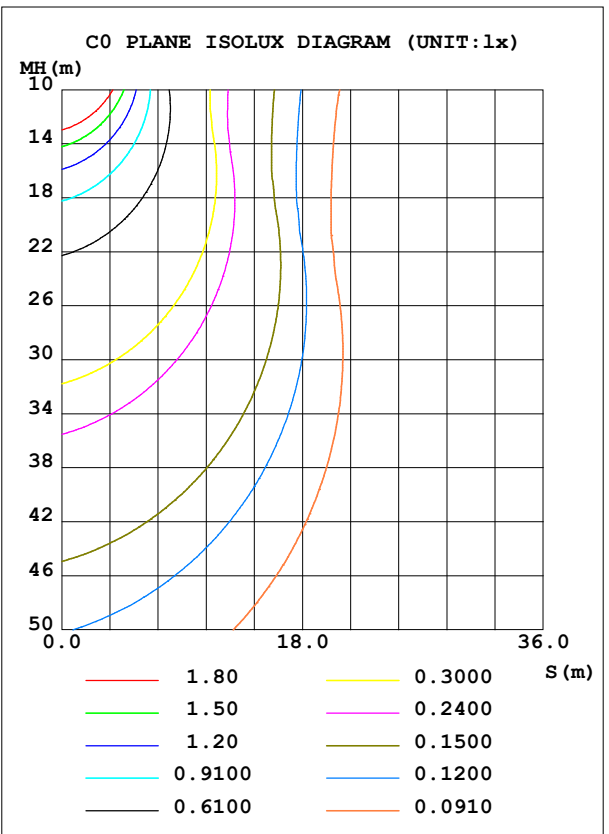
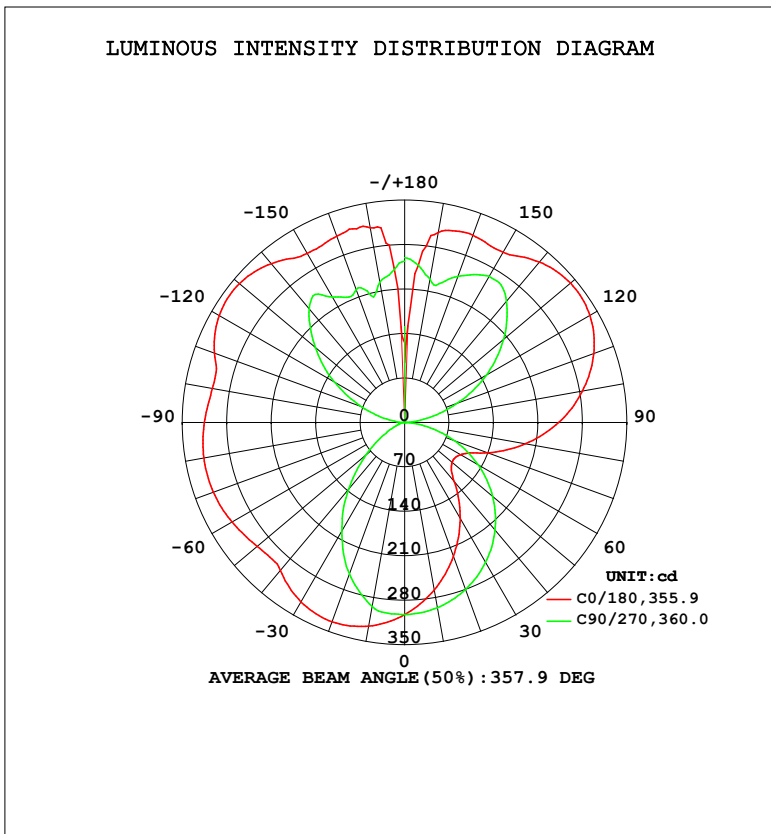


LUMINAIRE PHOTOMETRIC TEST REPORT

Test:U:119.9V I:0.3168A P:37.57W PF:0.9888 Freq:60.01Hz Lamp Flux:2674.05x1 lm		
NAME: PT07-44-40S-952C5-MVTD-BK 4000K	TYPE:	WEIGHT:
SPEC.:	DIM.:	SERIAL No.:
MFR.: FOSHAN LEDKEY LIGHTING CO.,LTD.	SUR.:	Shielding Angle:

DATA OF LAMP		PHOTOMETRIC DATA			
MODEL		Imax (cd)	341.8	S/MH (C0/180)	1.57
NOMINAL POWER (W)		LOR (%)	100.0	S/MH (C90/270)	1.03
RATED VOLTAGE (V)	120	TOTAL FLUX (lm)	2674.0	$\eta$ UP, DN (C0-180)	28.6, 21.1
NOMINAL FLUX (lm)	2674.05	CIE CLASS	DIFFUSE	$\eta$ UP, DN (C180-360)	27.7, 22.6
LAMPS INSIDE	1	$\eta$ up (%)	56.3	CIBSE SHR NOM	1.25
TEST VOLTAGE (V)	120	$\eta$ down (%)	43.7	CIBSE SHR MAX	1.35



C Range: 0 - 360DEG  
 C Interval: 22.5DEG  
 Test Speed: HIGH  
 Temperature: 25.2°C  
 Operators: Dano  
 Test Date: 2023-06-13

$\gamma$  Range: 0 - 180DEG  
 $\gamma$  Interval: 1.0DEG  
 Test System: EVERFINE GO-R5000\_V2 SYSTEM V2.00.459  
 Humidity: 55.3%  
 Test Distance: 2.900m [K=0.8810]  
 Remarks:

ZONAL FLUX DIAGRAM

ZONAL FLUX DIAGRAM:

γ	C0	C45	C90	C135	C180	C225	C270	C315	γ	Φ zone	Φ total	%lum, lamp
10	268.0	275.9	296.2	318.6	325.4	318.1	294.5	275.7	0- 10	28.60	28.60	1.07,1.07
20	224.7	240.5	280.1	322.1	333.9	322.3	254.4	240.4	10- 20	81.55	110.2	4.12,4.12
30	175.3	198.4	254.7	312.6	326.4	313.4	198.1	196.5	20- 30	122.5	232.6	8.7,8.7
40	121.8	151.3	221.5	290.3	304.4	291.1	137.4	146.6	30- 40	145.7	378.3	14.1,14.1
50	97.91	101.0	181.0	256.9	303.4	257.0	79.58	93.74	40- 50	150.7	529.0	19.8,19.8
60	101.9	72.85	133.9	236.6	313.8	238.5	34.27	72.79	50- 60	149.8	678.8	25.4,25.4
70	140.1	77.78	82.66	232.2	320.7	231.3	11.71	82.20	60- 70	150.5	829.3	31,31
80	193.7	123.6	32.04	228.0	321.0	222.7	6.949	128.9	70- 80	161.5	990.8	37.1,37.1
90	242.6	173.3	1.020	220.5	315.3	211.2	0.6362	173.2	80- 90	178.8	1170	43.7,43.7
100	284.2	216.7	30.54	216.5	307.6	207.7	24.77	212.0	90-100	197.2	1367	51.1,51.1
110	316.8	251.1	87.14	240.5	318.6	236.5	71.53	242.8	100-110	219.3	1586	59.3,59.3
120	337.0	272.8	148.4	263.4	337.0	257.1	127.7	263.3	110-120	235.3	1821	68.1,68.1
130	341.4	281.9	203.3	274.0	339.9	265.6	183.5	271.6	120-130	232.5	2054	76.8,76.8
140	329.9	281.4	249.5	273.2	326.6	269.9	234.2	255.2	130-140	212.6	2266	84.8,84.8
150	309.9	285.3	265.8	289.4	307.3	289.0	228.1	276.4	140-150	177.1	2444	91.4,91.4
160	313.9	282.6	244.5	309.2	312.4	307.8	222.8	207.1	150-160	130.1	2574	96.2,96.2
170	303.5	232.5	229.3	301.8	311.0	301.3	224.9	215.6	160-170	76.24	2650	99.1,99.1
180	94.59	239.0	259.5	245.6	126.0	214.7	254.1	255.1	170-180	24.22	2674	100,100
DEG	LUMINOUS INTENSITY:cd									UNIT:lm		

Conical surface Flux(90deg): 453.68 lm

%lum = 17.0%  
 %lamp = 17.0%

Conical surface Flux(120deg): 678.82 lm

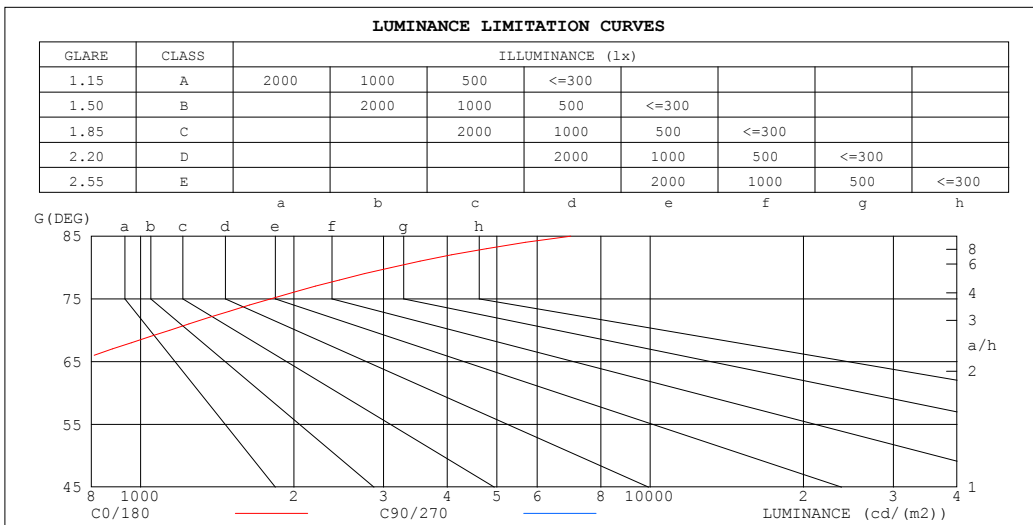
%lum = 25.4%  
 %lamp = 25.4%

C Range: 0 - 360DEG  
 C Interval: 22.5DEG  
 Test Speed: HIGH  
 Temperature:25.2℃  
 Operators:Dano  
 Test Date:2023-06-13

γ Range: 0 - 180DEG  
 γ Interval: 1.0DEG  
 Test System:EVERFINE GO-R5000\_V2 SYSTEM V2.00.459  
 Humidity:55.3%  
 Test Distance:2.900m [K=0.8810]  
 Remarks:

LUMINANCE LIMITATION CURVES

Test:U:119.9V I:0.3168A P:37.57W PF:0.9888 Freq:60.01Hz Lamp Flux:2674.05x1 lm		
NAME: PT07-44-40S-952C5-MVTD-BK 4000K	TYPE:	WEIGHT:
SPEC.:	DIM.:	SERIAL No.:
MFR.: FOSHAN LEDKEY LIGHTING CO.,LTD.	SUR.:	Shielding Angle:



LUMINANCE cd/(m2)		
G (DEG)	C0/180	C90/270
85	6990	380
80	3105	516
75	1799	610
70	1140	676
65	750	719
60	567	749
55	472	771
50	424	787
45	411	799

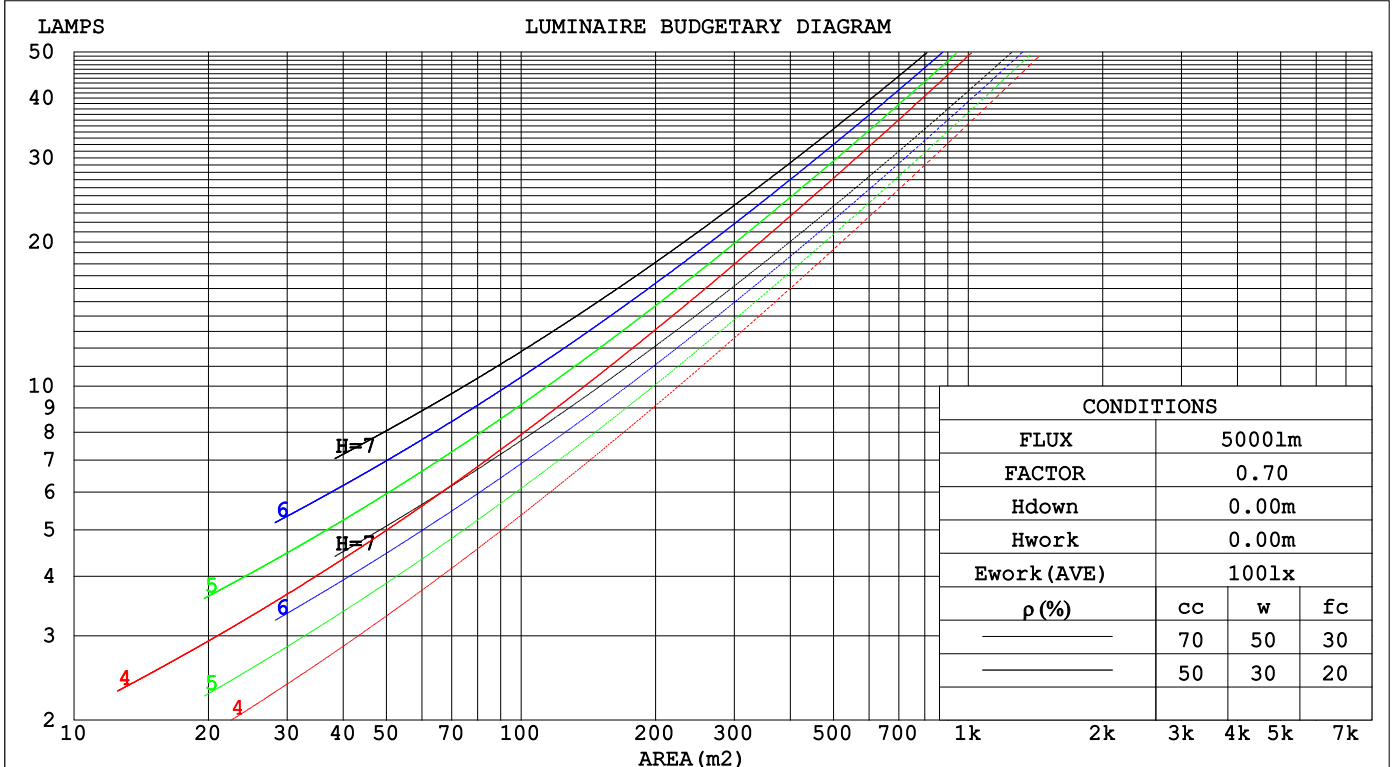
C Range: 0 - 360DEG  
 C Interval: 22.5DEG  
 Test Speed: HIGH  
 Temperature:25.2℃  
 Operators:Dano  
 Test Date:2023-06-13

γ Range: 0 - 180DEG  
 γ Interval: 1.0DEG  
 Test System:EVERFINE GO-R5000\_V2 SYSTEM V2.00.459  
 Humidity:55.3%  
 Test Distance:2.900m [K=0.8810]  
 Remarks:

**CU AND LUMINAIRE BUDGETARY ESTIMATE DIAGRAM**

Test:U:119.9V I:0.3168A P:37.57W PF:0.9888 Freq:60.01Hz Lamp Flux:2674.05x1 lm		
NAME: PT07-44-40S-952C5-MVTD-BK 4000K	TYPE:	WEIGHT:
SPEC.:	DIM.:	SERIAL No.:
MFR.: FOSHAN LEDKEY LIGHTING CO.,LTD.	SUR.:	Shielding Angle:

ρcc	80%			70%			50%			30%			10%			0
ρw	50%	30%	10%	50%	30%	10%	50%	30%	10%	50%	30%	10%	50%	30%	10%	0
ρfc	20%			20%			20%			20%			20%			0
RCR	RCR:Room Cavity Ratio						Coefficients of Utilization(CU)									
0.0	1.06	1.06	1.06	.97	.97	.97	.80	.80	.80	.64	.64	.64	.50	.50	.50	.44
1.0	.88	.83	.79	.80	.76	.72	.66	.62	.59	.52	.50	.48	.40	.38	.37	.31
2.0	.76	.68	.62	.69	.63	.57	.56	.52	.47	.45	.41	.38	.34	.31	.29	.24
3.0	.66	.58	.51	.60	.53	.47	.49	.44	.39	.39	.35	.31	.29	.27	.24	.20
4.0	.58	.49	.43	.53	.45	.39	.43	.37	.33	.34	.30	.26	.26	.23	.20	.16
5.0	.51	.43	.36	.47	.39	.33	.38	.33	.28	.31	.26	.23	.23	.20	.17	.14
6.0	.46	.37	.31	.42	.34	.29	.35	.29	.24	.28	.23	.20	.21	.18	.15	.12
7.0	.41	.33	.27	.38	.30	.25	.31	.25	.21	.25	.21	.17	.19	.16	.13	.11
8.0	.37	.29	.24	.34	.27	.22	.28	.23	.19	.23	.19	.15	.18	.14	.12	.09
9.0	.34	.26	.21	.31	.24	.20	.26	.20	.17	.21	.17	.14	.16	.13	.11	.08
10.0	.31	.24	.19	.29	.22	.17	.24	.19	.15	.19	.15	.12	.15	.12	.10	.08



C Range: 0 - 360DEG  
 C Interval: 22.5DEG  
 Test Speed: HIGH  
 Temperature:25.2°C  
 Operators:Dano  
 Test Date:2023-06-13

γ Range: 0 - 180DEG  
 γ Interval: 1.0DEG  
 Test System:EVERFINE GO-R5000\_V2 SYSTEM V2.00.459  
 Humidity:55.3%  
 Test Distance:2.900m [K=0.8810]  
 Remarks:

WEC AND CCEC

Test:U:119.9V I:0.3168A P:37.57W PF:0.9888 Freq:60.01Hz Lamp Flux:2674.05x1 lm		
NAME: PT07-44-40S-952C5-MVTD-BK 4000K	TYPE:	WEIGHT:
SPEC.:	DIM.:	SERIAL No.:
MFR.: FOSHAN LEDKEY LIGHTING CO.,LTD.	SUR.:	Shielding Angle:

ρcc	80%			70%			50%			30%			10%			0
ρw	50%	30%	10%	50%	30%	10%	50%	30%	10%	50%	30%	10%	50%	30%	10%	0
ρfc	20%			20%			20%			20%			20%			0
RCR	RCR:Room Cavity Ratio						Wall Exitance Coefficients(WEC)									
0.0																
1.0	.356	.203	.064	.332	.189	.060	.287	.164	.053	.245	.141	.045	.207	.120	.039	
2.0	.304	.167	.051	.282	.155	.048	.241	.134	.042	.203	.114	.036	.167	.095	.030	
3.0	.270	.143	.043	.249	.134	.040	.212	.115	.035	.177	.097	.030	.144	.080	.025	
4.0	.243	.126	.037	.224	.117	.035	.190	.101	.030	.157	.085	.025	.127	.069	.021	
5.0	.221	.113	.033	.204	.105	.031	.172	.090	.026	.142	.075	.022	.115	.061	.018	
6.0	.203	.102	.029	.188	.095	.027	.158	.081	.024	.130	.068	.020	.104	.055	.016	
7.0	.188	.093	.026	.173	.086	.025	.146	.074	.021	.120	.062	.018	.096	.050	.015	
8.0	.175	.085	.024	.161	.079	.022	.136	.068	.019	.112	.057	.016	.089	.046	.013	
9.0	.163	.079	.022	.151	.073	.021	.127	.063	.018	.104	.052	.015	.083	.042	.012	
10.0	.153	.073	.020	.141	.068	.019	.119	.058	.016	.098	.049	.014	.078	.039	.011	

ρcc	80%			70%			50%			30%			10%			0
ρw	50%	30%	10%	50%	30%	10%	50%	30%	10%	50%	30%	10%	50%	30%	10%	0
ρfc	20%			20%			20%			20%			20%			0
RCR	RCR:Room Cavity Ratio						Ceiling Cavity Exitance Coefficients(CCEC)									
0.0	.619	.619	.619	.529	.529	.529	.361	.361	.361	.207	.207	.207	.066	.066	.066	
1.0	.616	.588	.563	.527	.505	.484	.360	.347	.335	.207	.201	.195	.066	.065	.063	
2.0	.609	.567	.532	.522	.488	.460	.357	.338	.321	.206	.196	.188	.066	.064	.061	
3.0	.602	.552	.512	.516	.476	.444	.354	.331	.311	.205	.193	.183	.066	.063	.060	
4.0	.595	.540	.499	.510	.467	.433	.351	.325	.305	.203	.191	.180	.065	.062	.059	
5.0	.588	.531	.489	.505	.460	.426	.348	.321	.301	.201	.188	.178	.065	.062	.059	
6.0	.581	.524	.483	.499	.454	.420	.344	.318	.298	.200	.187	.177	.064	.061	.058	
7.0	.575	.518	.478	.494	.449	.417	.342	.315	.295	.198	.185	.176	.064	.061	.058	
8.0	.569	.513	.474	.489	.445	.414	.339	.312	.293	.197	.184	.175	.064	.060	.058	
9.0	.563	.508	.471	.485	.441	.411	.336	.310	.292	.196	.183	.174	.063	.060	.058	
10.0	.558	.505	.469	.481	.438	.409	.334	.308	.291	.195	.182	.174	.063	.060	.058	

C Range: 0 - 360DEG  
 C Interval: 22.5DEG  
 Test Speed: HIGH  
 Temperature:25.2℃  
 Operators:Dano  
 Test Date:2023-06-13

γ Range: 0 - 180DEG  
 γ Interval: 1.0DEG  
 Test System:EVERFINE GO-R5000\_V2 SYSTEM V2.00.459  
 Humidity:55.3%  
 Test Distance:2.900m [K=0.8810]  
 Remarks:

UGR(Unified Glare Rating) Table

Test:U:119.9V I:0.3168A P:37.57W PF:0.9888 Freq:60.01Hz										
Lamp Flux:2674.05x1 lm										
NAME: PT07-44-40S-952C5-MVTD-BK 4000K					TYPE:			WEIGHT:		
SPEC.:					DIM.:			SERIAL No.:		
MFR.: FOSHAN LEDKEY LIGHTING CO.,LTD.					SUR.:			Shielding Angle:		
ceiling/cavity	0.7	0.7	0.5	0.5	0.3	0.7	0.7	0.5	0.5	0.3
walls	0.5	0.3	0.5	0.3	0.3	0.5	0.3	0.5	0.3	0.3
working plane	0.2	0.2	0.2	0.2	0.2	0.2	0.2	0.2	0.2	0.2
Room dimensions	Viewed crosswise					Viewed endwise				
x = 2H y = 2H	0.6	2.4	2.5	4.3	6.9	5.0	6.8	6.9	8.8	11.4
3H	5.4	7.1	7.4	9.1	11.7	6.4	8.0	8.3	10.0	12.6
4H	8.3	9.8	10.2	11.8	14.5	6.9	8.4	8.8	10.4	13.1
6H	11.2	12.7	13.2	14.7	17.4	7.2	8.6	9.2	10.6	13.3
8H	12.8	14.2	14.8	16.2	18.9	7.2	8.6	9.2	10.6	13.3
12H	14.5	15.9	16.5	17.9	20.6	7.2	8.5	9.2	10.6	13.3
4H 2H	0.6	2.1	2.5	4.1	6.8	6.2	7.8	8.2	9.8	12.4
3H	5.8	7.2	7.8	9.2	11.9	8.0	9.4	10.0	11.4	14.1
4H	9.0	10.2	11.0	12.3	15.0	8.7	10.0	10.8	12.0	14.8
6H	12.2	13.3	14.3	15.4	18.2	9.3	10.4	11.3	12.5	15.2
8H	13.9	15.0	16.0	17.1	19.8	9.4	10.5	11.5	12.6	15.4
12H	15.8	16.7	17.9	18.8	21.7	9.5	10.4	11.6	12.6	15.4
8H 4H	9.2	10.2	11.2	12.3	15.1	10.5	11.5	12.6	13.6	16.4
6H	12.8	13.7	14.9	15.8	18.7	11.6	12.5	13.7	14.6	17.4
8H	14.8	15.6	16.9	17.7	20.6	12.0	12.8	14.2	15.0	17.8
12H	16.9	17.6	19.1	19.8	22.7	12.3	13.0	14.5	15.2	18.1
12H 4H	9.1	10.0	11.2	12.2	15.0	11.1	12.1	13.2	14.2	17.0
6H	12.9	13.7	15.0	15.8	18.7	12.6	13.4	14.7	15.5	18.4
8H	15.0	15.7	17.1	17.8	20.8	13.3	14.0	15.4	16.1	19.0
CIE190: 2010										

CIE190: 2010  
Area: 0.36 m2

C Range: 0 - 360DEG  
C Interval: 22.5DEG  
Test Speed: HIGH  
Temperature:25.2℃  
Operators:Dano  
Test Date:2023-06-13

γ Range: 0 - 180DEG  
γ Interval: 1.0DEG  
Test System:EVERFINE GO-R5000\_V2 SYSTEM V2.00.459  
Humidity:55.3%  
Test Distance:2.900m [K=0.8810]  
Remarks:

**UTILIZATION FACTORS TABLE**

Test:U:119.9V I:0.3168A P:37.57W PF:0.9888 Freq:60.01Hz Lamp Flux:2674.05x1 lm		
NAME: PT07-44-40S-952C5-MVTD-BK 4000K	TYPE:	WEIGHT:
SPEC.:	DIM.:	SERIAL No.:
MFR.: FOSHAN LEDKEY LIGHTING CO.,LTD.	SUR.:	Shielding Angle:

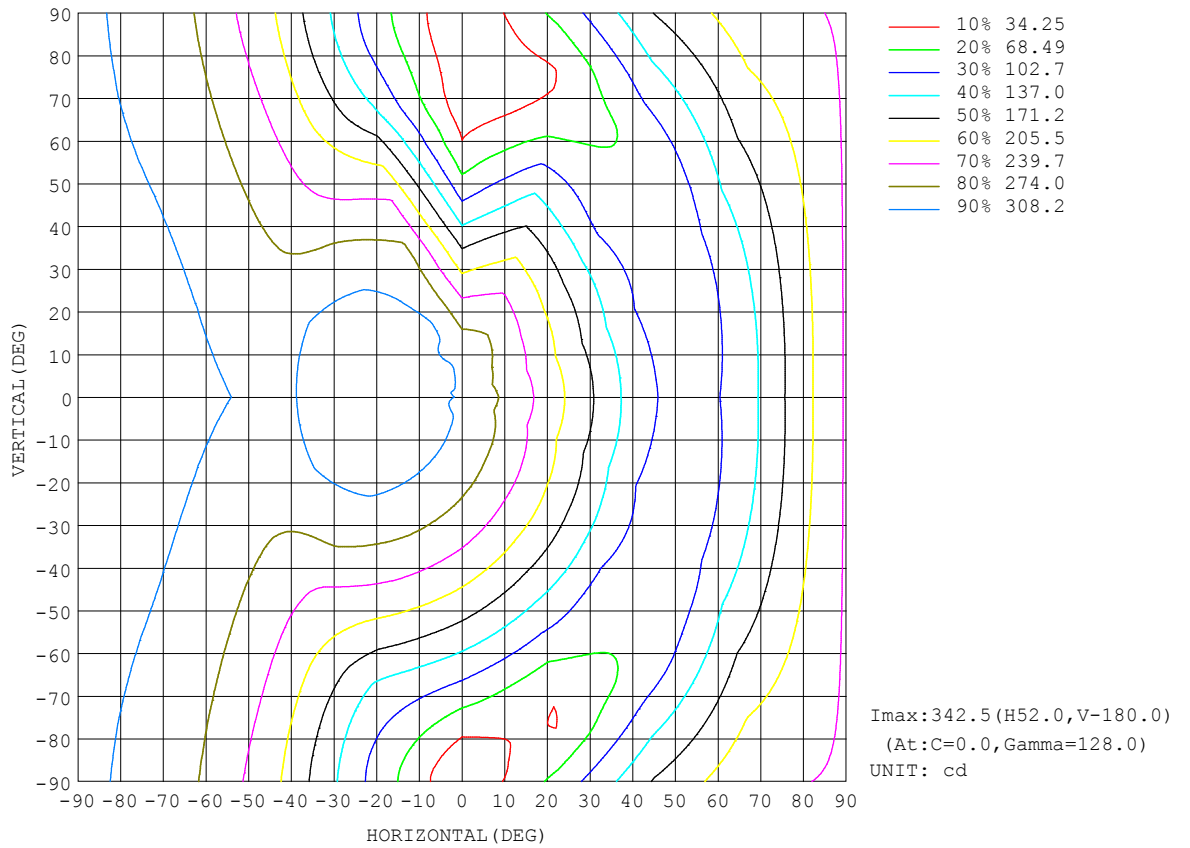
REFLECTANCE										
Ceiling	0.8	0.8	0.8	0.7	0.7	0.7	0.5	0.5	0.5	0
Walls	0.7	0.5	0.3	0.7	0.5	0.3	0.7	0.5	0.3	0
Working plane	0.2	0.2	0.2	0.2	0.2	0.2	0.2	0.2	0.2	0
ROOM INDEX	UTILIZATION FACTORS (PERCENT) $k(RI) \times RCR = 5$									
k = 0.60	38	27	20	36	25	19	32	23	18	10
0.80	47	34	27	44	33	25	38	29	23	13
1.00	54	41	33	50	39	31	43	35	28	16
1.25	61	48	40	56	45	37	48	39	33	18
1.50	66	54	45	61	50	42	51	43	37	20
2.00	73	62	53	68	57	50	57	49	43	24
2.50	78	68	59	72	62	55	60	53	47	25
3.00	82	72	64	75	67	60	62	56	51	27
4.00	87	78	71	79	72	66	66	60	56	30
5.00	90	83	76	82	76	70	68	63	59	32
ROOM INDEX	UF(total)									Direct
According to DIN EN 13032-2 2004			Suspended				SHRNOM = 1.25			

C Range: 0 - 360DEG  
 C Interval: 22.5DEG  
 Test Speed: HIGH  
 Temperature:25.2°C  
 Operators:Dano  
 Test Date:2023-06-13

$\gamma$  Range: 0 - 180DEG  
 $\gamma$  Interval: 1.0DEG  
 Test System:EVERFINE GO-R5000\_V2 SYSTEM V2.00.459  
 Humidity:55.3%  
 Test Distance:2.900m [K=0.8810]  
 Remarks:

ISOCANDELA DIAGRAM

Test:U:119.9V I:0.3168A P:37.57W PF:0.9888 Freq:60.01Hz Lamp Flux:2674.05x1 lm		
NAME: PT07-44-40S-952C5-MVTD-BK 4000K	TYPE:	WEIGHT:
SPEC.:	DIM.:	SERIAL No.:
MFR.: FOSHAN LEDKEY LIGHTING CO.,LTD.	SUR.:	Shielding Angle:



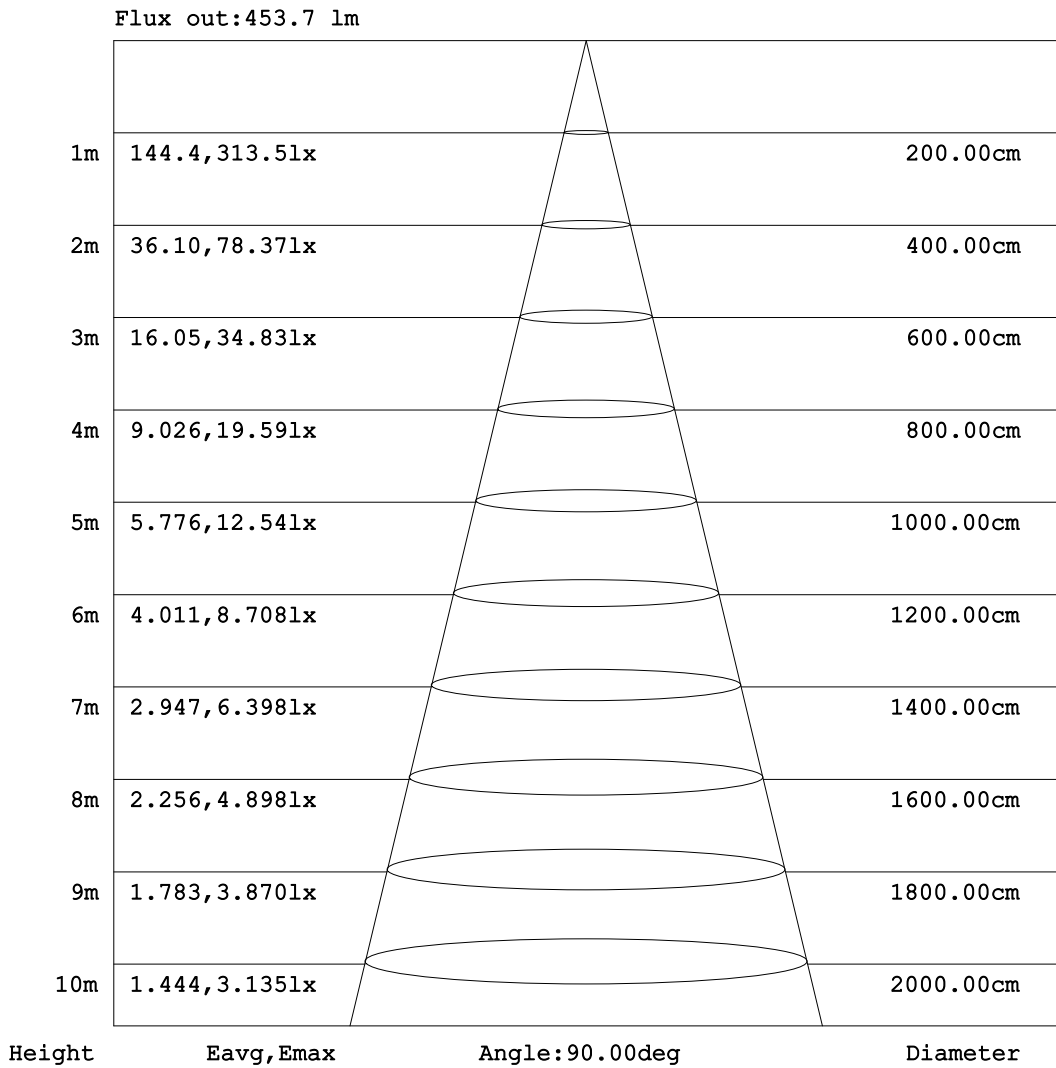
C Range: 0 - 360DEG  
C Interval: 22.5DEG  
Test Speed: HIGH  
Temperature: 25.2°C  
Operators: Dano  
Test Date: 2023-06-13

γ Range: 0 - 180DEG  
γ Interval: 1.0DEG  
Test System: EVERFINE GO-R5000\_V2 SYSTEM V2.00.459  
Humidity: 55.3%  
Test Distance: 2.900m [K=0.8810]  
Remarks:



**AAI Figure**

Test:U:119.9V I:0.3168A P:37.57W PF:0.9888 Freq:60.01Hz Lamp Flux:2674.05x1 lm		
NAME: PT07-44-40S-952C5-MVTD-BK 4000K	TYPE:	WEIGHT:
SPEC.:	DIM.:	SERIAL No.:
MFR.: FOSHAN LEDKEY LIGHTING CO.,LTD.	SUR.:	Shielding Angle:



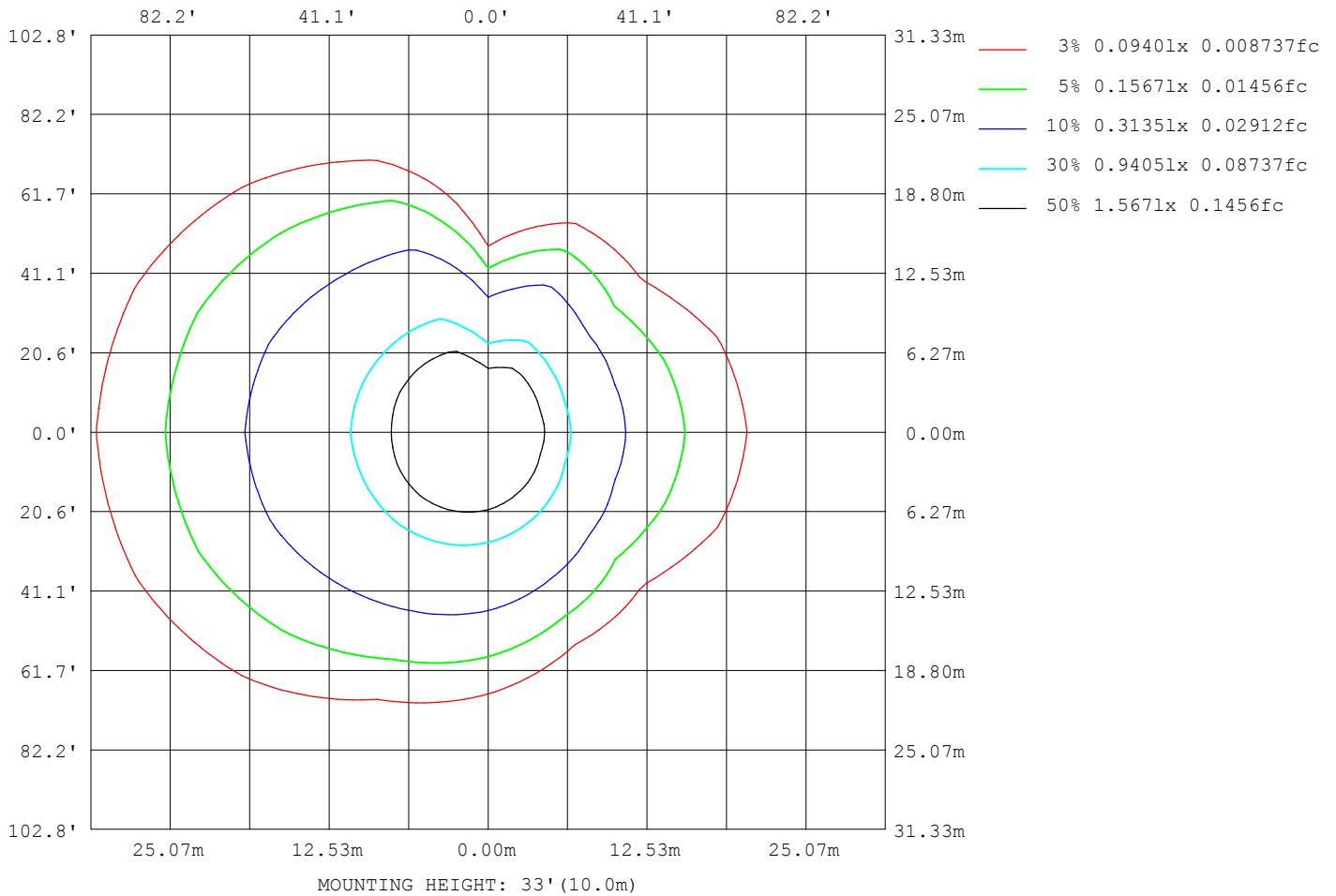
Note:The Curves indicate the illuminated area and the average illumination when the luminaire is at different distance.

C Range: 0 - 360DEG  
 C Interval: 22.5DEG  
 Test Speed: HIGH  
 Temperature:25.2℃  
 Operators:Dano  
 Test Date:2023-06-13

γ Range: 0 - 180DEG  
 γ Interval: 1.0DEG  
 Test System:EVERFINE GO-R5000\_V2 SYSTEM V2.00.459  
 Humidity:55.3%  
 Test Distance:2.900m [K=0.8810]  
 Remarks:

ISOLUX DIAGRAM

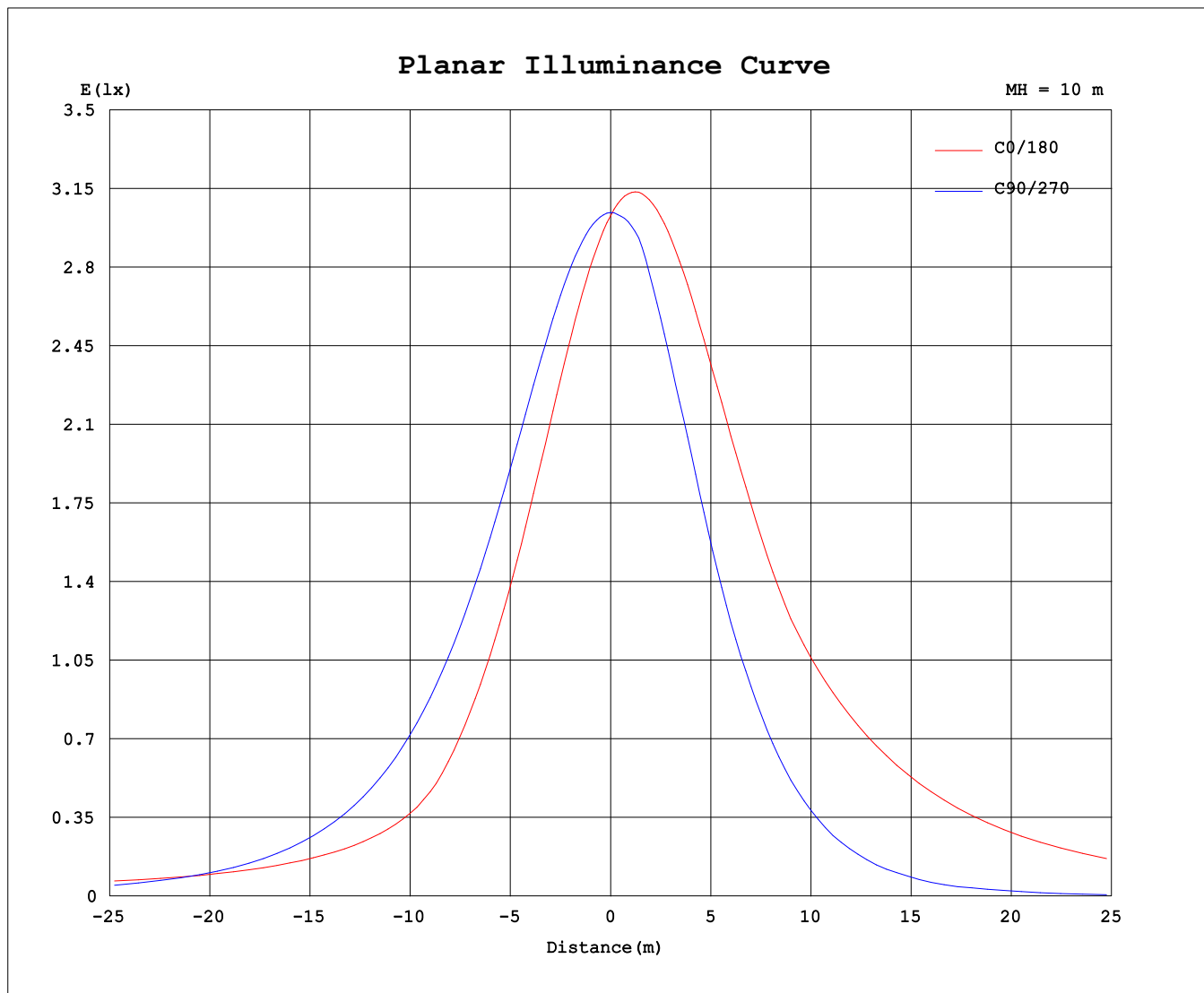
Test:U:119.9V I:0.3168A P:37.57W PF:0.9888 Freq:60.01Hz Lamp Flux:2674.05x1 lm		
NAME: PT07-44-40S-952C5-MVTD-BK 4000K	TYPE:	WEIGHT:
SPEC.:	DIM.:	SERIAL No.:
MFR.: FOSHAN LEDKEY LIGHTING CO.,LTD.	SUR.:	Shielding Angle:



C Range: 0 - 360DEG  
 C Interval: 22.5DEG  
 Test Speed: HIGH  
 Temperature:25.2°C  
 Operators:Dano  
 Test Date:2023-06-13

γ Range: 0 - 180DEG  
 γ Interval: 1.0DEG  
 Test System:EVERFINE GO-R5000\_V2 SYSTEM V2.00.459  
 Humidity:55.3%  
 Test Distance:2.900m [K=0.8810]  
 Remarks:

### Planar Illuminance Curve



C Range: 0 - 360DEG  
C Interval: 22.5DEG  
Test Speed: HIGH  
Temperature: 25.2°C  
Operators: Dano  
Test Date: 2023-06-13

γ Range: 0 - 180DEG  
γ Interval: 1.0DEG  
Test System: EVERFINE GO-R5000\_V2 SYSTEM V2.00.459  
Humidity: 55.3%  
Test Distance: 2.900m [K=0.8810]  
Remarks:

LUMINOUS DISTRIBUTION INTENSITY DATA

Test:U:119.9V I:0.3168A P:37.57W PF:0.9888 Freq:60.01Hz Lamp Flux:2674.05x1 lm		
NAME: PT07-44-40S-952C5-MVTD-BK 4000K	TYPE:	WEIGHT:
SPEC.:	DIM.:	SERIAL No.:
MFR.: FOSHAN LEDKEY LIGHTING CO.,LTD.	SUR.:	Shielding Angle:

Table--1

UNIT: cd

C (DEG) \ γ (DEG)	0	22.5	45	67.5	90	112.5	135	157.5	180	202.5	225	247.5	270	292.5	315	337.5			
0	302	302	302	302	302	302	302	302	302	302	302	302	302	302	302	302			
5	286	287	290	295	301	306	312	315	316	315	311	307	302	296	290	287			
10	268	268	276	285	296	307	319	325	325	326	318	304	295	288	276	269			
15	247	248	259	273	289	305	322	331	332	332	322	309	276	275	259	248			
20	225	226	240	259	280	301	322	334	334	335	322	305	254	260	240	226			
25	200	202	220	243	268	293	319	332	332	334	320	297	228	243	219	202			
30	175	178	198	225	255	283	313	327	326	329	313	289	198	224	196	177			
35	149	152	175	205	239	271	303	318	317	320	304	281	169	204	172	150			
40	122	125	151	184	221	256	290	306	304	308	291	267	137	182	147	123			
45	104	103	126	162	202	239	275	292	300	294	275	250	107	158	120	103			
50	97.9	94.3	101	138	181	220	257	289	303	292	257	232	79.6	136	93.7	94.7			
55	97.3	92.1	80.9	113	158	198	242	291	309	294	244	210	55.5	112	80.0	92.3			
60	102	95.7	72.8	87.9	134	175	237	295	314	297	238	186	34.3	84.2	72.8	95.6			
65	114	106	71.6	62.2	109	151	234	298	318	300	235	160	21.6	57.7	72.3	107			
70	140	131	77.8	40.6	82.7	132	232	301	321	301	231	136	11.7	39.7	82.2	133			
75	167	158	97.7	33.0	56.5	120	230	302	322	301	227	120	9.73	33.2	106	159			
80	194	185	124	37.0	32.0	111	228	302	321	300	223	107	6.95	39.4	129	184			
85	219	211	149	57.2	11.8	104	224	300	319	297	217	97.4	2.45	58.4	152	208			
90	243	235	173	79.3	1.02	101	220	296	315	292	211	92.1	0.64	78.1	173	231			
95	264	257	196	101	8.42	104	217	292	311	287	207	94.4	5.39	97.4	193	252			
100	284	277	217	122	30.5	121	217	289	308	283	208	111	24.8	115	212	271			
105	302	294	235	142	57.6	138	225	288	307	284	222	129	46.7	133	228	287			
110	317	309	251	159	87.1	154	241	299	319	297	236	144	71.5	148	243	301			
115	329	320	263	174	118	167	254	311	330	309	248	158	98.6	162	255	312			
120	337	328	273	187	148	178	263	321	337	317	257	170	128	172	263	320			
125	341	332	279	200	176	193	270	326	341	322	263	187	157	177	269	324			
130	341	332	282	219	203	212	274	327	340	323	266	205	183	200	272	324			
135	338	328	282	237	228	231	274	325	335	320	266	224	210	218	270	320			
140	330	320	281	254	249	249	273	318	327	315	270	244	234	235	255	311			
145	319	311	287	267	265	267	280	309	315	307	278	262	246	245	267	302			
150	310	309	285	273	266	280	289	305	307	305	289	278	228	235	276	288			
155	310	312	291	264	257	293	299	308	308	308	299	293	218	202	254	294			
160	314	314	283	243	244	291	309	314	312	313	308	302	223	188	207	265			
165	312	300	256	225	228	263	317	320	316	319	314	301	207	193	195	213			
170	303	237	233	232	229	231	302	324	311	318	301	281	225	215	216	208			
175	247	200	239	244	249	241	271	289	280	288	262	250	237	240	242	227			
180	94.6	224	239	255	259	259	246	226	126	130	215	237	254	259	255	245			

C Range: 0 - 360DEG  
 C Interval: 22.5DEG  
 Test Speed: HIGH  
 Temperature:25.2℃  
 Operators:Dano  
 Test Date:2023-06-13

γ Range: 0 - 180DEG  
 γ Interval: 1.0DEG  
 Test System:EVERFINE GO-R5000\_V2 SYSTEM V2.00.459  
 Humidity:55.3%  
 Test Distance:2.900m [K=0.8810]  
 Remarks: