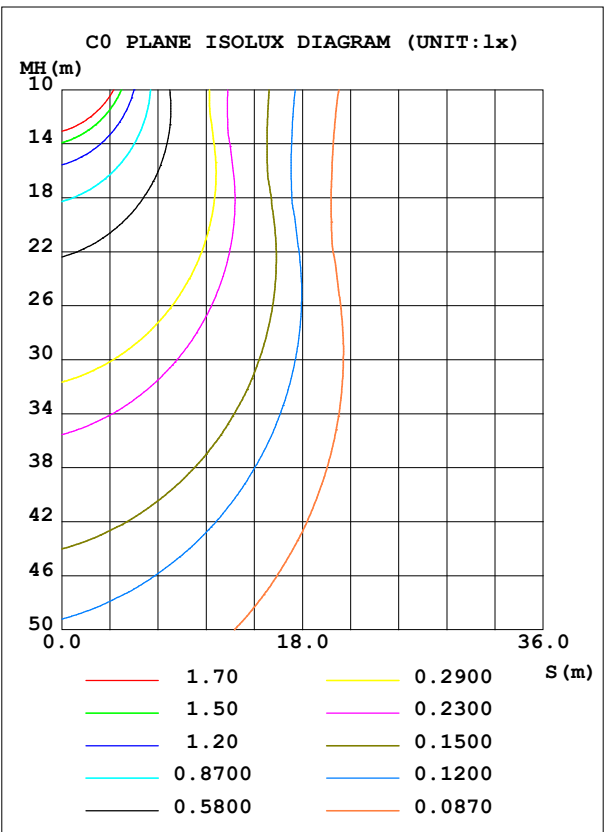
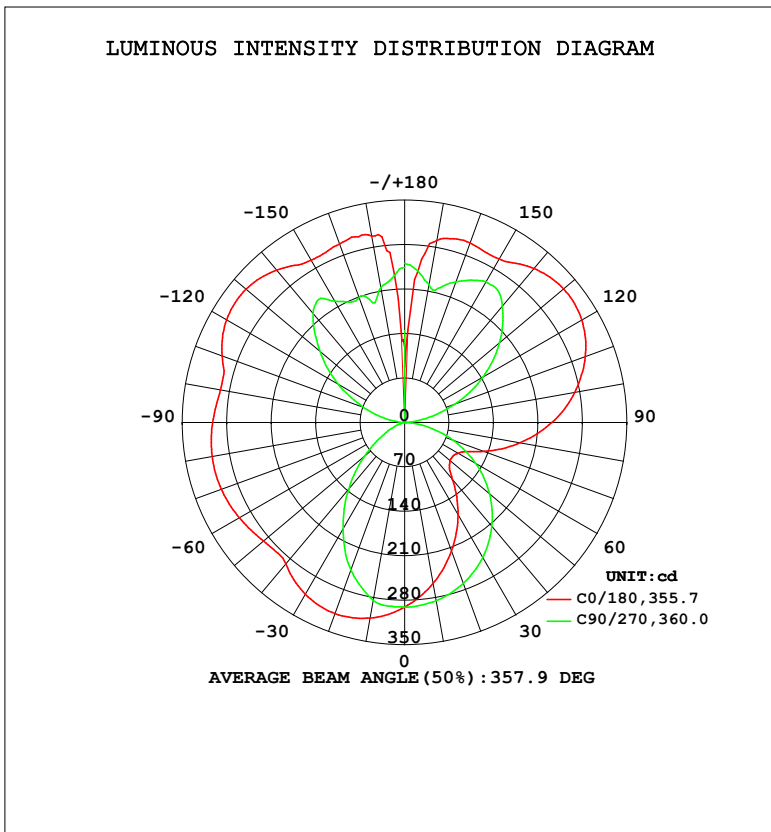


LUMINAIRE PHOTOMETRIC TEST REPORT

Test:U:119.9V I:0.3182A P:37.74W PF:0.9890 Freq:60.01Hz Lamp Flux:2556.36x1 lm		
NAME: PT07-44-40S-952C5-MVTD-BK 3500K	TYPE:	WEIGHT:
SPEC.:	DIM.:	SERIAL No.:
MFR.: FOSHAN LEDKEY LIGHTING CO.,LTD.	SUR.:	Shielding Angle:

DATA OF LAMP		PHOTOMETRIC DATA			
MODEL		Imax (cd)	327.3	S/MH (C0/180)	1.56
NOMINAL POWER (W)		LOR (%)	100.0	S/MH (C90/270)	1.05
RATED VOLTAGE (V)	120	TOTAL FLUX (lm)	2556.4	η UP, DN (C0-180)	28.6, 21.1
NOMINAL FLUX (lm)	2556.36	CIE CLASS	DIFFUSE	η UP, DN (C180-360)	27.6, 22.6
LAMPS INSIDE	1	η up (%)	56.3	CIBSE SHR NOM	1.25
TEST VOLTAGE (V)	120	η down (%)	43.7	CIBSE SHR MAX	1.35



C Range: 0 - 360DEG
 C Interval: 22.5DEG
 Test Speed: HIGH
 Temperature: 25.2°C
 Operators: Dano
 Test Date: 2023-06-13

γ Range: 0 - 180DEG
 γ Interval: 1.0DEG
 Test System: EVERFINE GO-R5000_V2 SYSTEM V2.00.459
 Humidity: 55.3%
 Test Distance: 2.900m [K=0.8810]
 Remarks:

ZONAL FLUX DIAGRAM

ZONAL FLUX DIAGRAM:

γ	C0	C45	C90	C135	C180	C225	C270	C315	γ	Φ zone	Φ total	%lum,lamp
10	257.4	265.1	285.0	303.8	312.6	305.9	284.5	267.1	0- 10	27.50	27.50	1.08,1.08
20	215.7	231.3	269.8	304.8	320.3	309.8	247.5	235.1	10- 20	78.41	105.9	4.14,4.14
30	168.3	191.0	245.9	293.2	312.6	300.6	194.0	194.8	20- 30	117.7	223.6	8.75,8.75
40	117.4	145.9	213.7	270.0	291.1	278.8	136.9	148.5	30- 40	140.0	363.6	14.2,14.2
50	93.81	97.75	174.7	237.0	290.4	245.9	82.65	97.77	40- 50	144.8	508.5	19.9,19.9
60	97.36	69.78	129.6	224.2	300.5	228.0	37.34	71.04	50- 60	143.7	652.2	25.5,25.5
70	133.5	73.81	80.30	220.8	307.2	220.8	11.23	72.38	60- 70	143.7	795.9	31.1,31.1
80	185.0	117.1	31.43	216.1	307.8	212.4	5.157	113.8	70- 80	152.9	948.8	37.1,37.1
90	232.0	164.9	1.061	208.6	302.2	201.5	0.6156	156.7	80- 90	169.4	1118	43.7,43.7
100	271.8	206.9	29.06	207.5	294.8	198.9	24.23	194.5	90-100	187.3	1305	51.1,51.1
110	302.7	240.0	83.54	234.3	305.8	227.0	67.56	225.3	100-110	209.4	1515	59.3,59.3
120	322.2	261.8	142.2	253.7	323.6	246.5	120.4	246.8	110-120	225.0	1740	68.1,68.1
130	327.1	269.7	195.0	260.7	326.3	254.6	174.1	257.0	120-130	222.2	1962	76.8,76.8
140	316.6	269.4	239.4	261.4	313.3	259.2	224.8	251.5	130-140	203.5	2166	84.7,84.7
150	297.4	273.6	255.9	278.9	294.9	277.7	220.4	259.4	140-150	169.6	2335	91.3,91.3
160	300.7	271.5	235.7	297.2	299.4	295.7	209.6	214.5	150-160	125.0	2460	96.2,96.2
170	290.9	223.0	220.7	278.8	298.1	288.6	215.9	192.9	160-170	73.24	2533	99.1,99.1
180	87.15	230.0	250.4	222.6	119.0	206.0	244.2	243.3	170-180	22.87	2556	100,100
DEG	LUMINOUS INTENSITY:cd									UNIT:lm		

Conical surface Flux(90deg): 436.05 lm

%lum = 17.1%
 %lamp = 17.1%

Conical surface Flux(120deg): 652.22 lm

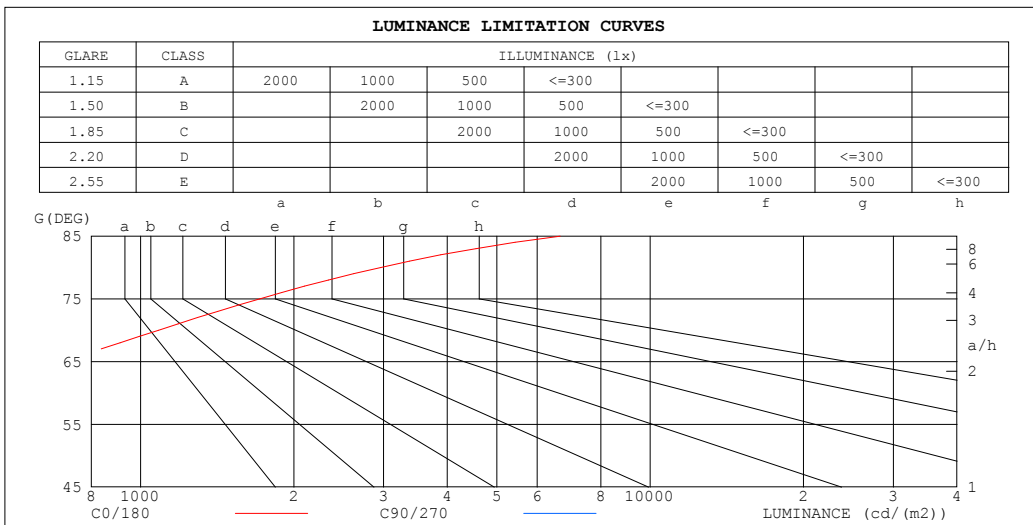
%lum = 25.5%
 %lamp = 25.5%

C Range: 0 - 360DEG
 C Interval: 22.5DEG
 Test Speed: HIGH
 Temperature:25.2℃
 Operators:Dano
 Test Date:2023-06-13

γ Range: 0 - 180DEG
 γ Interval: 1.0DEG
 Test System:EVERFINE GO-R5000_V2 SYSTEM V2.00.459
 Humidity:55.3%
 Test Distance:2.900m [K=0.8810]
 Remarks:

LUMINANCE LIMITATION CURVES

Test:U:119.9V I:0.3182A P:37.74W PF:0.9890 Freq:60.01Hz Lamp Flux:2556.36x1 lm		
NAME: PT07-44-40S-952C5-MVTD-BK 3500K	TYPE:	WEIGHT:
SPEC.:	DIM.:	SERIAL No.:
MFR.: FOSHAN LEDKEY LIGHTING CO.,LTD.	SUR.:	Shielding Angle:



LUMINANCE cd/(m2)		
G (DEG)	C0/180	C90/270
85	6664	380
80	2959	504
75	1713	591
70	1084	653
65	713	695
60	541	721
55	451	741
50	405	756
45	393	767

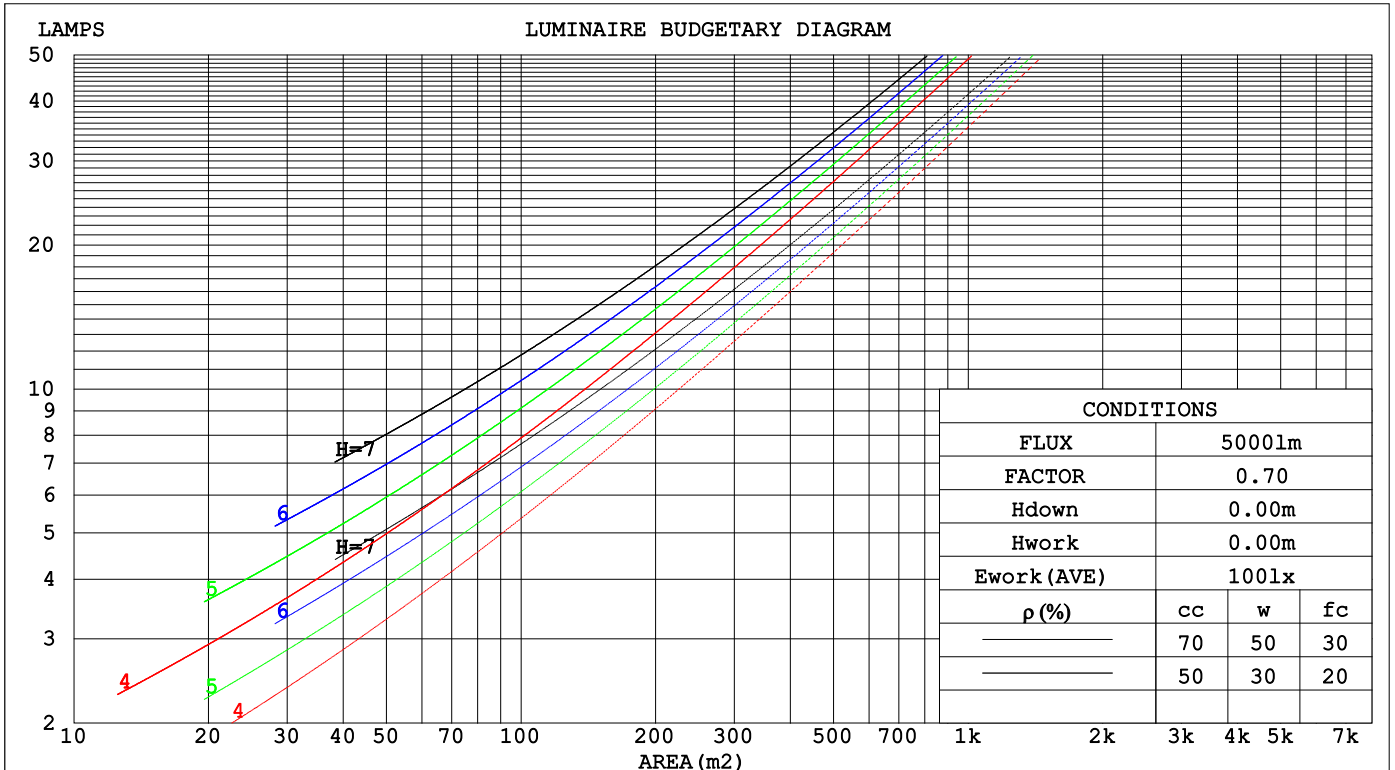
C Range: 0 - 360DEG
 C Interval: 22.5DEG
 Test Speed: HIGH
 Temperature:25.2℃
 Operators:Dano
 Test Date:2023-06-13

γ Range: 0 - 180DEG
 γ Interval: 1.0DEG
 Test System:EVERFINE GO-R5000_V2 SYSTEM V2.00.459
 Humidity:55.3%
 Test Distance:2.900m [K=0.8810]
 Remarks:

CU AND LUMINAIRE BUDGETARY ESTIMATE DIAGRAM

Test:U:119.9V I:0.3182A P:37.74W PF:0.9890 Freq:60.01Hz Lamp Flux:2556.36x1 lm		
NAME: PT07-44-40S-952C5-MVTD-BK 3500K	TYPE:	WEIGHT:
SPEC.:	DIM.:	SERIAL No.:
MFR.: FOSHAN LEDKEY LIGHTING CO.,LTD.	SUR.:	Shielding Angle:

ρcc	80%			70%			50%			30%			10%			0
ρw	50%	30%	10%	50%	30%	10%	50%	30%	10%	50%	30%	10%	50%	30%	10%	0
ρfc	20%			20%			20%			20%			20%			0
RCR	RCR:Room Cavity Ratio						Coefficients of Utilization(CU)									
0.0	1.06	1.06	1.06	.97	.97	.97	.80	.80	.80	.64	.64	.64	.50	.50	.50	.44
1.0	.88	.83	.79	.80	.76	.72	.66	.62	.60	.52	.50	.48	.40	.38	.37	.31
2.0	.76	.68	.62	.69	.63	.57	.56	.52	.48	.45	.41	.38	.34	.31	.29	.24
3.0	.66	.58	.51	.60	.53	.47	.49	.44	.39	.39	.35	.32	.30	.27	.24	.20
4.0	.58	.49	.43	.53	.45	.39	.43	.37	.33	.34	.30	.27	.26	.23	.20	.16
5.0	.51	.43	.36	.47	.39	.34	.39	.33	.28	.31	.26	.23	.23	.20	.18	.14
6.0	.46	.37	.31	.42	.34	.29	.35	.29	.24	.28	.23	.20	.21	.18	.15	.12
7.0	.41	.33	.27	.38	.30	.25	.31	.25	.21	.25	.21	.17	.19	.16	.13	.11
8.0	.37	.29	.24	.34	.27	.22	.28	.23	.19	.23	.19	.15	.18	.14	.12	.10
9.0	.34	.26	.21	.31	.24	.20	.26	.21	.17	.21	.17	.14	.16	.13	.11	.09
10.0	.31	.24	.19	.29	.22	.18	.24	.19	.15	.19	.15	.12	.15	.12	.10	.08



C Range: 0 - 360DEG
 C Interval: 22.5DEG
 Test Speed: HIGH
 Temperature:25.2°C
 Operators:Dano
 Test Date:2023-06-13

γ Range: 0 - 180DEG
 γ Interval: 1.0DEG
 Test System:EVERFINE GO-R5000_V2 SYSTEM V2.00.459
 Humidity:55.3%
 Test Distance:2.900m [K=0.8810]
 Remarks:

WEC AND CCEC

Test:U:119.9V I:0.3182A P:37.74W PF:0.9890 Freq:60.01Hz Lamp Flux:2556.36x1 lm		
NAME: PT07-44-40S-952C5-MVTD-BK 3500K	TYPE:	WEIGHT:
SPEC.:	DIM.:	SERIAL No.:
MFR.: FOSHAN LEDKEY LIGHTING CO.,LTD.	SUR.:	Shielding Angle:

ρcc	80%			70%			50%			30%			10%			0
ρw	50%	30%	10%	50%	30%	10%	50%	30%	10%	50%	30%	10%	50%	30%	10%	0
ρfc	20%			20%			20%			20%			20%			0
RCR	RCR:Room Cavity Ratio						Wall Exitance Coefficients(WEC)									
0.0																
1.0	.355	.202	.064	.331	.189	.060	.286	.164	.052	.244	.141	.045	.206	.119	.038	
2.0	.304	.166	.051	.282	.155	.048	.240	.134	.041	.202	.113	.035	.167	.094	.030	
3.0	.269	.143	.043	.249	.133	.040	.211	.114	.035	.176	.097	.030	.144	.080	.025	
4.0	.243	.126	.037	.224	.117	.035	.189	.100	.030	.157	.084	.025	.127	.069	.021	
5.0	.221	.113	.033	.204	.105	.031	.172	.090	.026	.142	.075	.022	.114	.061	.018	
6.0	.203	.102	.029	.187	.095	.027	.158	.081	.024	.130	.068	.020	.104	.055	.016	
7.0	.188	.093	.026	.173	.086	.025	.146	.074	.021	.120	.062	.018	.096	.050	.015	
8.0	.175	.085	.024	.161	.079	.022	.136	.068	.019	.112	.056	.016	.089	.046	.013	
9.0	.163	.079	.022	.150	.073	.021	.127	.063	.018	.104	.052	.015	.083	.042	.012	
10.0	.153	.073	.020	.141	.068	.019	.119	.058	.016	.098	.048	.014	.078	.039	.011	

ρcc	80%			70%			50%			30%			10%			0
ρw	50%	30%	10%	50%	30%	10%	50%	30%	10%	50%	30%	10%	50%	30%	10%	0
ρfc	20%			20%			20%			20%			20%			0
RCR	RCR:Room Cavity Ratio						Ceiling Cavity Exitance Coefficients(CCEC)									
0.0	.619	.619	.619	.529	.529	.529	.361	.361	.361	.207	.207	.207	.066	.066	.066	
1.0	.616	.588	.563	.527	.505	.485	.360	.347	.335	.207	.201	.195	.066	.065	.063	
2.0	.609	.567	.532	.522	.488	.460	.357	.338	.321	.206	.196	.188	.066	.064	.061	
3.0	.602	.552	.512	.516	.476	.444	.354	.331	.311	.205	.193	.183	.066	.063	.060	
4.0	.595	.540	.499	.510	.467	.433	.351	.325	.305	.203	.191	.180	.065	.062	.059	
5.0	.588	.531	.489	.505	.460	.426	.348	.321	.301	.201	.188	.178	.065	.062	.059	
6.0	.581	.524	.483	.499	.454	.421	.344	.318	.298	.200	.187	.177	.064	.061	.058	
7.0	.575	.518	.478	.494	.449	.417	.341	.315	.295	.198	.185	.176	.064	.061	.058	
8.0	.569	.513	.474	.489	.445	.414	.339	.312	.293	.197	.184	.175	.064	.060	.058	
9.0	.563	.508	.471	.485	.441	.411	.336	.310	.292	.196	.183	.174	.063	.060	.058	
10.0	.558	.505	.469	.481	.438	.409	.333	.308	.291	.195	.182	.174	.063	.060	.058	

C Range: 0 - 360DEG
 C Interval: 22.5DEG
 Test Speed: HIGH
 Temperature:25.2℃
 Operators:Dano
 Test Date:2023-06-13

γ Range: 0 - 180DEG
 γ Interval: 1.0DEG
 Test System:EVERFINE GO-R5000_V2 SYSTEM V2.00.459
 Humidity:55.3%
 Test Distance:2.900m [K=0.8810]
 Remarks:

UGR(Unified Glare Rating) Table

Test:U:119.9V I:0.3182A P:37.74W PF:0.9890 Freq:60.01Hz										
Lamp Flux:2556.36x1 lm										
NAME: PT07-44-40S-952C5-MVTD-BK 3500K					TYPE:			WEIGHT:		
SPEC.:					DIM.:			SERIAL No.:		
MFR.: FOSHAN LEDKEY LIGHTING CO.,LTD.					SUR.:			Shielding Angle:		
ceiling/cavity	0.7	0.7	0.5	0.5	0.3	0.7	0.7	0.5	0.5	0.3
walls	0.5	0.3	0.5	0.3	0.3	0.5	0.3	0.5	0.3	0.3
working plane	0.2	0.2	0.2	0.2	0.2	0.2	0.2	0.2	0.2	0.2
Room dimensions	Viewed crosswise					Viewed endwise				
x = 2H y = 2H	0.4	2.2	2.3	4.2	6.7	4.9	6.7	6.8	8.7	11.2
3H	5.2	6.9	7.1	8.9	11.5	6.3	7.9	8.2	9.9	12.5
4H	8.0	9.6	10.0	11.6	14.3	6.8	8.3	8.7	10.3	13.0
6H	11.0	12.5	13.0	14.5	17.2	7.1	8.5	9.1	10.6	13.2
8H	12.6	14.0	14.6	16.1	18.7	7.1	8.5	9.1	10.6	13.3
12H	14.3	15.7	16.4	17.7	20.4	7.1	8.5	9.1	10.5	13.2
4H 2H	0.4	2.0	2.4	4.0	6.6	6.1	7.6	8.0	9.6	12.3
3H	5.6	7.0	7.6	9.0	11.7	7.9	9.2	9.9	11.3	14.0
4H	8.8	10.0	10.8	12.1	14.8	8.6	9.9	10.7	11.9	14.7
6H	12.0	13.1	14.1	15.2	18.0	9.2	10.3	11.2	12.4	15.1
8H	13.7	14.8	15.8	16.9	19.7	9.4	10.4	11.4	12.5	15.3
12H	15.6	16.5	17.7	18.7	21.5	9.4	10.4	11.5	12.5	15.3
8H 4H	8.9	10.0	11.0	12.1	14.9	10.4	11.4	12.4	13.5	16.3
6H	12.6	13.5	14.7	15.6	18.4	11.5	12.4	13.6	14.5	17.3
8H	14.6	15.4	16.7	17.5	20.4	11.9	12.7	14.1	14.9	17.7
12H	16.7	17.4	18.9	19.6	22.5	12.3	13.0	14.4	15.1	18.0
12H 4H	8.9	9.8	11.0	11.9	14.8	11.0	11.9	13.1	14.1	16.9
6H	12.7	13.5	14.8	15.6	18.5	12.4	13.2	14.6	15.4	18.2
8H	14.8	15.5	16.9	17.6	20.6	13.2	13.9	15.3	16.0	18.9
CIE190: 2010										

CIE190: 2010
Area: 0.36 m2

C Range: 0 - 360DEG
C Interval: 22.5DEG
Test Speed: HIGH
Temperature:25.2℃
Operators:Dano
Test Date:2023-06-13

γ Range: 0 - 180DEG
γ Interval: 1.0DEG
Test System:EVERFINE GO-R5000_V2 SYSTEM V2.00.459
Humidity:55.3%
Test Distance:2.900m [K=0.8810]
Remarks:

UTILIZATION FACTORS TABLE

Test:U:119.9V I:0.3182A P:37.74W PF:0.9890 Freq:60.01Hz Lamp Flux:2556.36x1 lm		
NAME: PT07-44-40S-952C5-MVTD-BK 3500K	TYPE:	WEIGHT:
SPEC.:	DIM.:	SERIAL No.:
MFR.: FOSHAN LEDKEY LIGHTING CO.,LTD.	SUR.:	Shielding Angle:

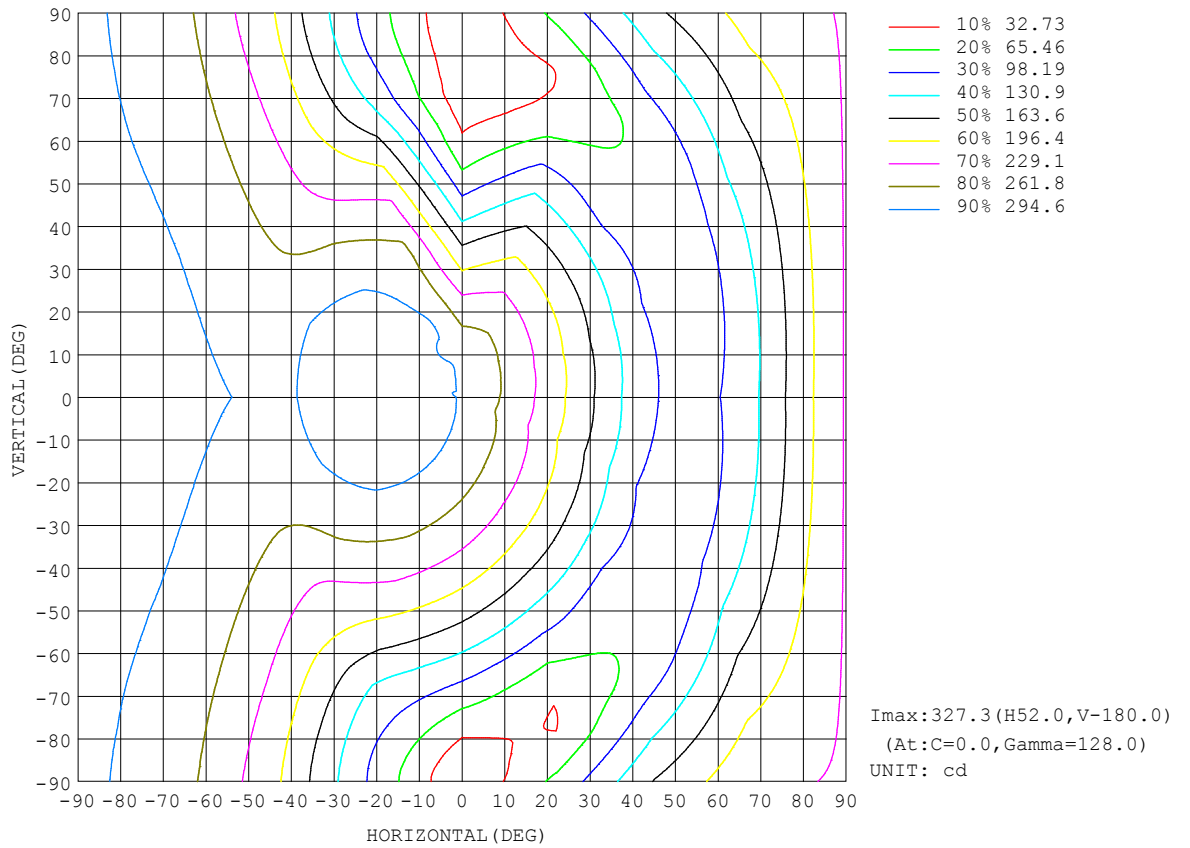
REFLECTANCE										
Ceiling	0.8	0.8	0.8	0.7	0.7	0.7	0.5	0.5	0.5	0
Walls	0.7	0.5	0.3	0.7	0.5	0.3	0.7	0.5	0.3	0
Working plane	0.2	0.2	0.2	0.2	0.2	0.2	0.2	0.2	0.2	0
ROOM INDEX	UTILIZATION FACTORS (PERCENT) $k(RI) \times RCR = 5$									
k = 0.60	39	27	20	36	26	19	32	23	18	10
0.80	47	35	27	44	33	26	38	29	23	13
1.00	54	41	33	51	39	31	43	36	28	16
1.25	61	48	40	56	45	37	48	39	33	19
1.50	66	54	45	61	50	42	52	43	37	21
2.00	74	62	53	68	57	50	57	49	43	24
2.50	78	68	59	72	62	55	60	53	47	26
3.00	82	72	64	75	67	60	62	56	51	27
4.00	87	78	72	79	72	66	66	60	56	30
5.00	90	83	76	82	76	70	68	63	59	32
ROOM INDEX	UF(total)									Direct
According to DIN EN 13032-2 2004			Suspended				SHRNOM = 1.25			

C Range: 0 - 360DEG
 C Interval: 22.5DEG
 Test Speed: HIGH
 Temperature:25.2°C
 Operators:Dano
 Test Date:2023-06-13

γ Range: 0 - 180DEG
 γ Interval: 1.0DEG
 Test System:EVERFINE GO-R5000_V2 SYSTEM V2.00.459
 Humidity:55.3%
 Test Distance:2.900m [K=0.8810]
 Remarks:

ISOCANDELA DIAGRAM

Test:U:119.9V I:0.3182A P:37.74W PF:0.9890 Freq:60.01Hz Lamp Flux:2556.36x1 lm		
NAME: PT07-44-40S-952C5-MVTD-BK 3500K	TYPE:	WEIGHT:
SPEC.:	DIM.:	SERIAL No.:
MFR.: FOSHAN LEDKEY LIGHTING CO.,LTD.	SUR.:	Shielding Angle:

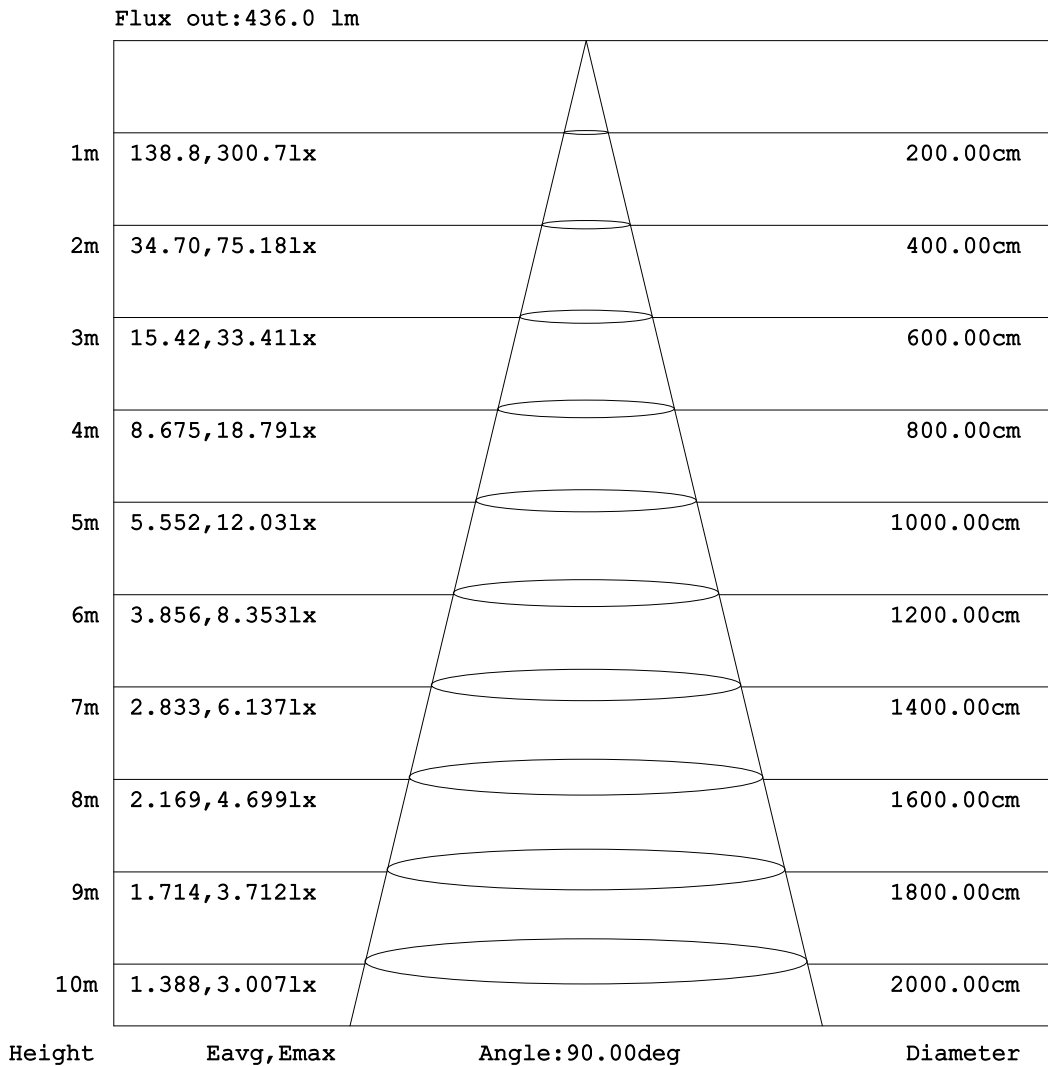


C Range: 0 - 360DEG
C Interval: 22.5DEG
Test Speed: HIGH
Temperature: 25.2°C
Operators: Dano
Test Date: 2023-06-13

γ Range: 0 - 180DEG
γ Interval: 1.0DEG
Test System: EVERFINE GO-R5000_V2 SYSTEM V2.00.459
Humidity: 55.3%
Test Distance: 2.900m [K=0.8810]
Remarks:

AAI Figure

Test:U:119.9V I:0.3182A P:37.74W PF:0.9890 Freq:60.01Hz Lamp Flux:2556.36x1 lm		
NAME: PT07-44-40S-952C5-MVTD-BK 3500K	TYPE:	WEIGHT:
SPEC.:	DIM.:	SERIAL No.:
MFR.: FOSHAN LEDKEY LIGHTING CO.,LTD.	SUR.:	Shielding Angle:



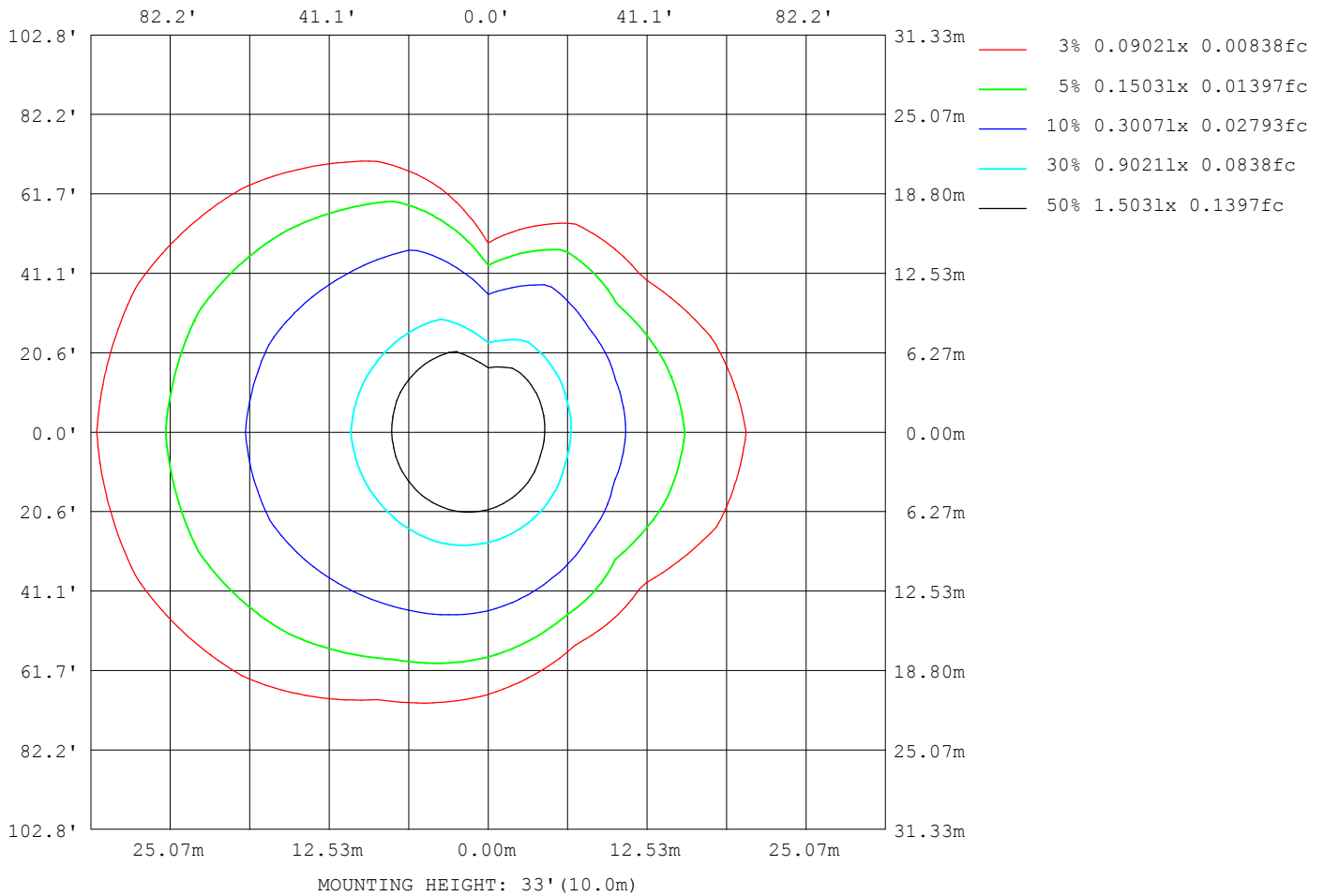
Note:The Curves indicate the illuminated area and the average illumination when the luminaire is at different distance.

C Range: 0 - 360DEG
 C Interval: 22.5DEG
 Test Speed: HIGH
 Temperature:25.2℃
 Operators:Dano
 Test Date:2023-06-13

γ Range: 0 - 180DEG
 γ Interval: 1.0DEG
 Test System:EVERFINE GO-R5000_V2 SYSTEM V2.00.459
 Humidity:55.3%
 Test Distance:2.900m [K=0.8810]
 Remarks:

ISOLUX DIAGRAM

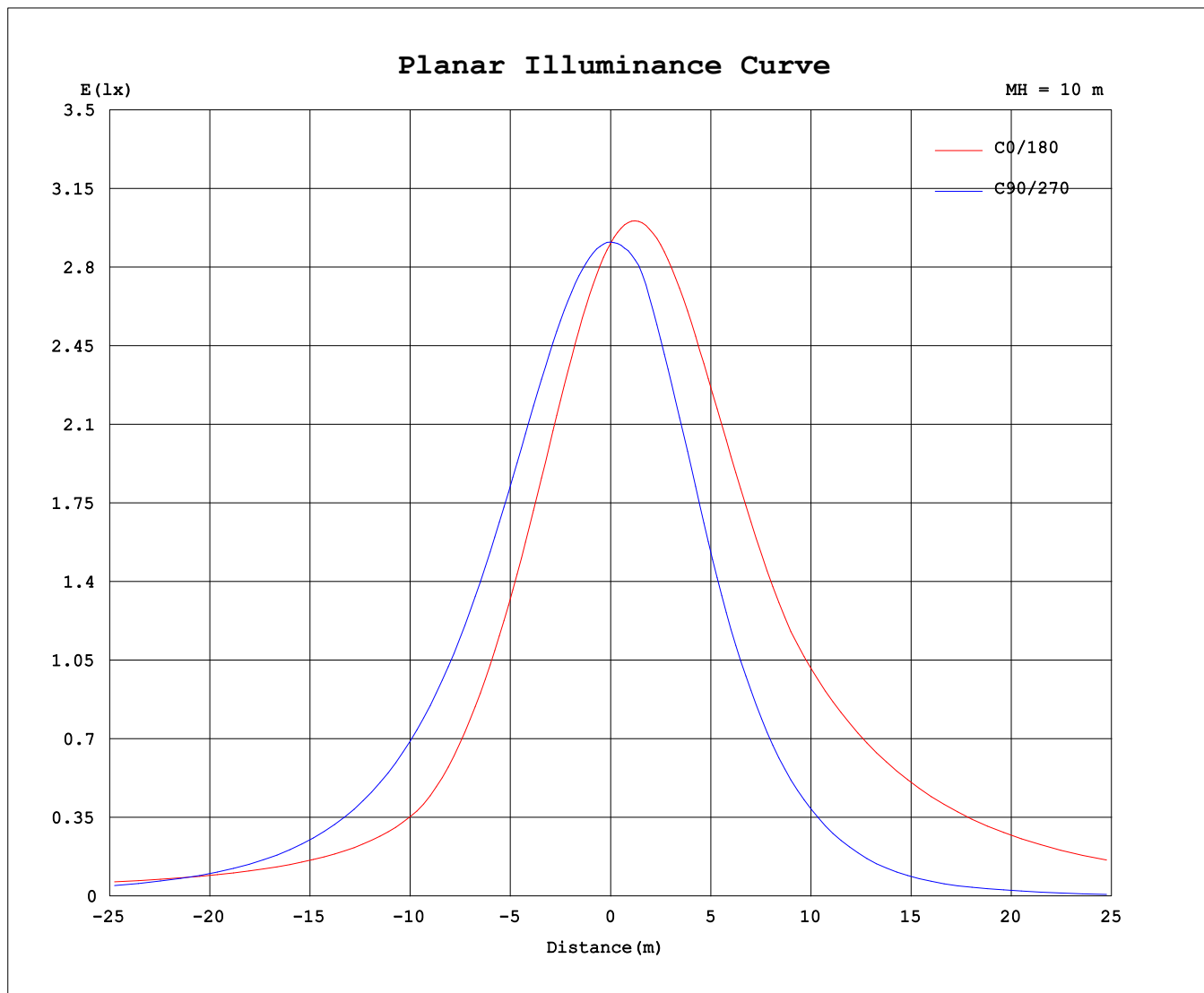
Test:U:119.9V I:0.3182A P:37.74W PF:0.9890 Freq:60.01Hz Lamp Flux:2556.36x1 lm		
NAME: PT07-44-40S-952C5-MVTD-BK 3500K	TYPE:	WEIGHT:
SPEC.:	DIM.:	SERIAL No.:
MFR.: FOSHAN LEDKEY LIGHTING CO.,LTD.	SUR.:	Shielding Angle:



C Range: 0 - 360DEG
 C Interval: 22.5DEG
 Test Speed: HIGH
 Temperature:25.2°C
 Operators:Dano
 Test Date:2023-06-13

γ Range: 0 - 180DEG
 γ Interval: 1.0DEG
 Test System:EVERFINE GO-R5000_V2 SYSTEM V2.00.459
 Humidity:55.3%
 Test Distance:2.900m [K=0.8810]
 Remarks:

Planar Illuminance Curve



C Range: 0 - 360DEG
 C Interval: 22.5DEG
 Test Speed: HIGH
 Temperature: 25.2°C
 Operators: Dano
 Test Date: 2023-06-13

γ Range: 0 - 180DEG
 γ Interval: 1.0DEG
 Test System: EVERFINE GO-R5000_V2 SYSTEM V2.00.459
 Humidity: 55.3%
 Test Distance: 2.900m [K=0.8810]
 Remarks:

LUMINOUS DISTRIBUTION INTENSITY DATA

Test:U:119.9V I:0.3182A P:37.74W PF:0.9890 Freq:60.01Hz Lamp Flux:2556.36x1 lm		
NAME: PT07-44-40S-952C5-MVTD-BK 3500K	TYPE:	WEIGHT:
SPEC.:	DIM.:	SERIAL No.:
MFR.: FOSHAN LEDKEY LIGHTING CO.,LTD.	SUR.:	Shielding Angle:

Table--1

UNIT: cd

C (DEG) \ γ (DEG)	0	22.5	45	67.5	90	112.5	135	157.5	180	202.5	225	247.5	270	292.5	315	337.5			
0	291	291	291	291	291	291	291	291	291	291	291	291	291	291	291	291			
5	275	276	279	284	289	294	299	302	303	303	300	295	290	285	280	277			
10	257	258	265	275	285	295	304	310	313	313	306	292	284	276	267	261			
15	238	239	249	263	279	293	306	314	318	319	310	296	267	264	252	242			
20	216	218	231	249	270	289	305	315	320	321	310	293	247	250	235	222			
25	193	195	212	234	259	282	301	312	318	320	307	285	223	233	216	200			
30	168	171	191	217	246	272	293	306	313	315	301	277	194	216	195	176			
35	143	146	169	198	231	260	283	296	303	307	291	270	166	196	172	151			
40	117	121	146	178	214	246	270	284	291	295	279	257	137	174	149	126			
45	100	99.1	122	156	195	230	254	273	287	282	264	240	110	152	124	102			
50	93.8	90.4	97.7	133	175	211	237	273	290	280	246	222	82.7	131	97.8	91.6			
55	93.1	88.2	77.9	110	153	191	228	276	296	282	234	201	57.4	107	80.0	87.4			
60	97.4	91.4	69.8	85.5	130	169	224	280	300	285	228	178	37.3	80.2	71.0	88.4			
65	108	101	68.3	60.6	106	145	222	283	305	287	224	153	24.3	54.9	68.1	95.4			
70	133	124	73.8	39.2	80.3	128	221	285	307	289	221	130	11.2	38.2	72.4	115			
75	160	151	92.3	31.3	55.0	116	219	285	308	289	217	114	7.71	32.2	91.7	140			
80	185	177	117	34.4	31.4	108	216	284	308	287	212	101	5.16	38.8	114	164			
85	209	201	142	53.6	11.9	102	212	282	306	284	207	91.9	1.83	57.0	136	188			
90	232	224	165	74.7	1.06	98.8	209	279	302	280	202	86.8	0.62	75.8	157	210			
95	253	246	187	95.7	8.13	101	206	275	298	275	198	89.5	5.53	94.5	176	230			
100	272	265	207	116	29.1	117	207	273	295	272	199	107	24.2	112	195	249			
105	288	282	225	135	55.1	134	220	275	295	272	213	123	45.0	129	211	266			
110	303	296	240	151	83.5	148	234	288	306	285	227	137	67.6	144	225	280			
115	314	307	253	166	113	161	246	299	317	297	238	150	92.8	157	237	291			
120	322	314	262	178	142	172	254	306	324	305	247	163	120	168	247	300			
125	327	318	267	192	169	186	259	310	327	309	252	179	148	171	253	305			
130	327	318	270	209	195	203	261	309	326	310	255	197	174	192	257	306			
135	324	314	269	227	219	222	260	306	322	308	255	215	200	210	257	304			
140	317	307	269	243	239	239	261	298	313	302	259	234	225	227	251	298			
145	306	298	275	257	255	256	269	289	302	295	267	252	237	237	249	287			
150	297	297	274	262	256	269	279	288	295	293	278	268	220	227	259	282			
155	297	300	279	253	248	281	287	293	295	296	287	281	209	195	250	275			
160	301	302	271	234	236	280	297	298	299	301	296	290	210	180	214	267			
165	299	289	246	216	220	254	299	304	303	306	302	288	195	185	189	217			
170	291	228	223	223	221	222	279	306	298	305	289	269	216	208	193	192			
175	237	193	229	234	240	232	245	252	269	276	251	239	228	232	222	210			
180	87.1	215	230	245	250	244	223	188	119	131	206	227	244	249	243	226			

C Range: 0 - 360DEG
 C Interval: 22.5DEG
 Test Speed: HIGH
 Temperature:25.2℃
 Operators:Dano
 Test Date:2023-06-13

γ Range: 0 - 180DEG
 γ Interval: 1.0DEG
 Test System:EVERFINE GO-R5000_V2 SYSTEM V2.00.459
 Humidity:55.3%
 Test Distance:2.900m [K=0.8810]
 Remarks: