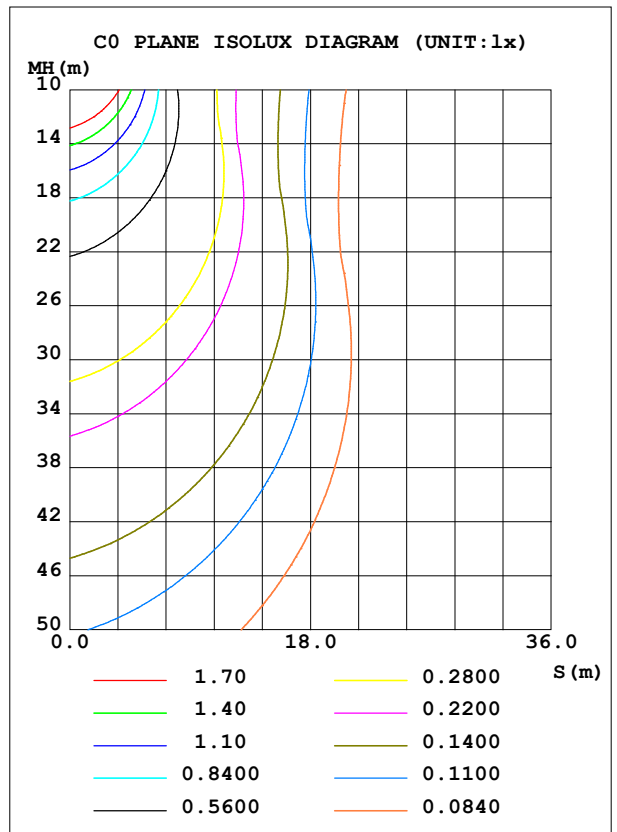
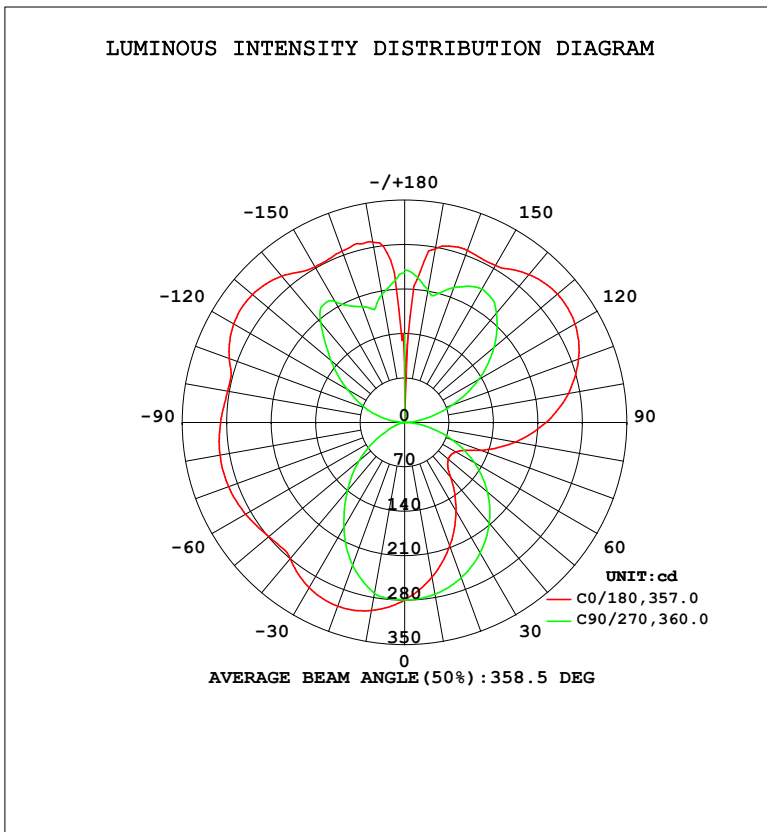


LUMINAIRE PHOTOMETRIC TEST REPORT

Test:U:119.9V I:0.3167A P:37.56W PF:0.9889 Freq:60.01Hz Lamp Flux:2456.47x1 lm		
NAME: PT07-44-40S-952C5-MVTD-BK 3000K	TYPE:	WEIGHT:
SPEC.:	DIM.:	SERIAL No.:
MFR.: FOSHAN LEDKEY LIGHTING CO.,LTD.	SUR.:	Shielding Angle:

DATA OF LAMP		PHOTOMETRIC DATA				Eff: 65.41 lm/W
MODEL		I _{max} (cd)	314.5	S/MH (C0/180)		1.56
NOMINAL POWER (W)		LOR (%)	100.0	S/MH (C90/270)		1.06
RATED VOLTAGE (V)	120	TOTAL FLUX (lm)	2456.5	η UP, DN (C0-180)		28.6, 21.2
NOMINAL FLUX (lm)	2456.47	CIE CLASS	DIFFUSE	η UP, DN (C180-360)		27.5, 22.7
LAMPS INSIDE	1	η up (%)	56.1	CIBSE SHR NOM		1.25
TEST VOLTAGE (V)	120	η down (%)	43.9	CIBSE SHR MAX		1.35



C Range: 0 - 360DEG
 C Interval: 22.5DEG
 Test Speed: HIGH
 Temperature: 25.2°C
 Operators: Dano
 Test Date: 2023-06-13

γ Range: 0 - 180DEG
 γ Interval: 1.0DEG
 Test System: EVERFINE GO-R5000_V2 SYSTEM V2.00.459
 Humidity: 55.3%
 Test Distance: 2.900m [K=0.8810]
 Remarks:

ZONAL FLUX DIAGRAM

ZONAL FLUX DIAGRAM:

γ	C0	C45	C90	C135	C180	C225	C270	C315	γ	Φ zone	Φ total	%lum,lamp
10	247.5	255.6	274.6	292.6	300.6	293.8	273.2	256.8	0- 10	26.44	26.44	1.08,1.08
20	207.6	223.5	260.2	293.8	308.1	297.2	239.6	224.8	10- 20	75.41	101.8	4.15,4.15
30	162.1	185.2	237.6	282.8	300.6	288.5	191.2	185.7	20- 30	113.3	215.2	8.76,8.76
40	113.4	142.0	207.5	260.3	280.2	267.4	140.3	140.9	30- 40	135.0	350.1	14.3,14.3
50	90.03	95.80	170.2	228.8	279.5	235.7	93.11	92.21	40- 50	140.0	490.1	20,20
60	93.42	66.13	126.8	219.0	289.1	215.7	47.93	68.97	50- 60	139.2	629.3	25.6,25.6
70	128.2	68.28	79.56	216.5	295.0	207.7	18.01	71.86	60- 70	138.8	768.1	31.3,31.3
80	177.5	108.4	32.37	212.4	295.3	199.0	3.629	112.9	70- 80	147.2	915.3	37.3,37.3
90	222.6	154.1	1.909	205.5	289.9	188.4	1.668	154.3	80- 90	162.6	1078	43.9,43.9
100	261.9	194.4	28.25	203.8	283.1	186.2	26.08	190.6	90-100	180.0	1258	51.2,51.2
110	291.3	226.3	79.19	228.7	293.9	213.7	65.34	219.9	100-110	201.0	1459	59.4,59.4
120	309.9	247.5	134.1	247.2	310.8	232.7	104.6	240.4	110-120	215.5	1674	68.2,68.2
130	314.3	256.7	183.8	253.7	313.0	240.9	151.6	250.1	120-130	212.5	1887	76.8,76.8
140	304.2	258.1	225.0	252.6	300.9	247.1	205.9	245.7	130-140	194.5	2081	84.7,84.7
150	285.8	261.7	243.0	268.2	282.9	266.2	220.1	248.8	140-150	162.7	2244	91.4,91.4
160	288.5	260.1	225.9	285.4	287.3	283.9	194.1	209.9	150-160	120.2	2364	96.2,96.2
170	277.4	215.4	211.7	269.3	288.3	274.7	204.9	183.4	160-170	70.20	2435	99.1,99.1
180	33.16	222.6	240.3	212.6	97.42	197.1	235.9	232.8	170-180	21.97	2456	100,100
DEG	LUMINOUS INTENSITY:cd									UNIT:lm		

Conical surface Flux(90deg): 420.1 lm

%lum = 17.1%

%lamp = 17.1%

Conical surface Flux(120deg): 629.33 lm

%lum = 25.6%

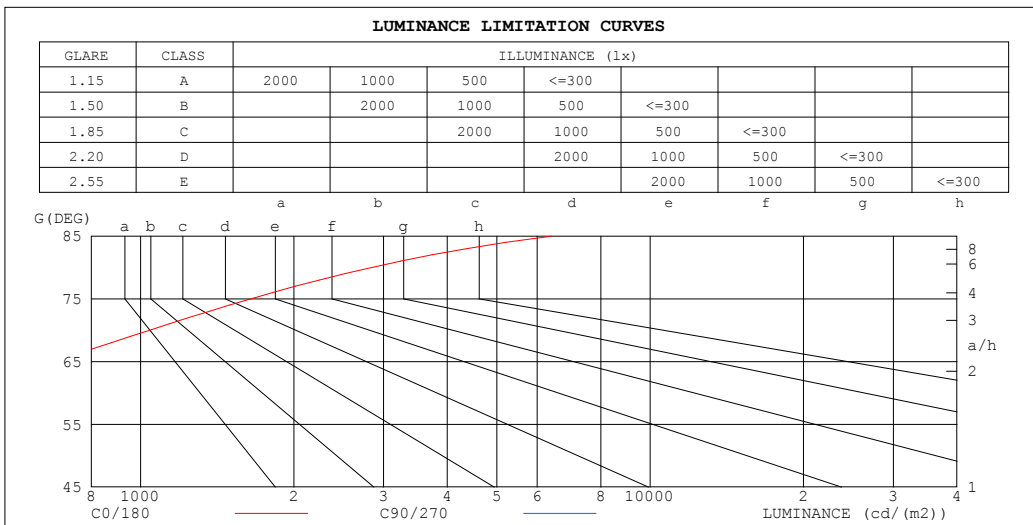
%lamp = 25.6%

C Range: 0 - 360DEG
C Interval: 22.5DEG
Test Speed: HIGH
Temperature:25.2℃
Operators:Dano
Test Date:2023-06-13

γ Range: 0 - 180DEG
 γ Interval: 1.0DEG
Test System:EVERFINE GO-R5000_V2 SYSTEM V2.00.459
Humidity:55.3%
Test Distance:2.900m [K=0.8810]
Remarks:

LUMINANCE LIMITATION CURVES

Test:U:119.9V I:0.3167A P:37.56W PF:0.9889 Freq:60.01Hz Lamp Flux:2456.47x1 lm		
NAME: PT07-44-40S-952C5-MVTD-BK 3000K	TYPE:	WEIGHT:
SPEC.:	DIM.:	SERIAL No.:
MFR.: FOSHAN LEDKEY LIGHTING CO.,LTD.	SUR.:	Shielding Angle:



LUMINANCE cd/(m2)		
G (DEG)	C0/180	C90/270
85	6403	410
80	2843	519
75	1646	593
70	1042	647
65	685	684
60	519	706
55	433	724
50	389	737
45	378	746

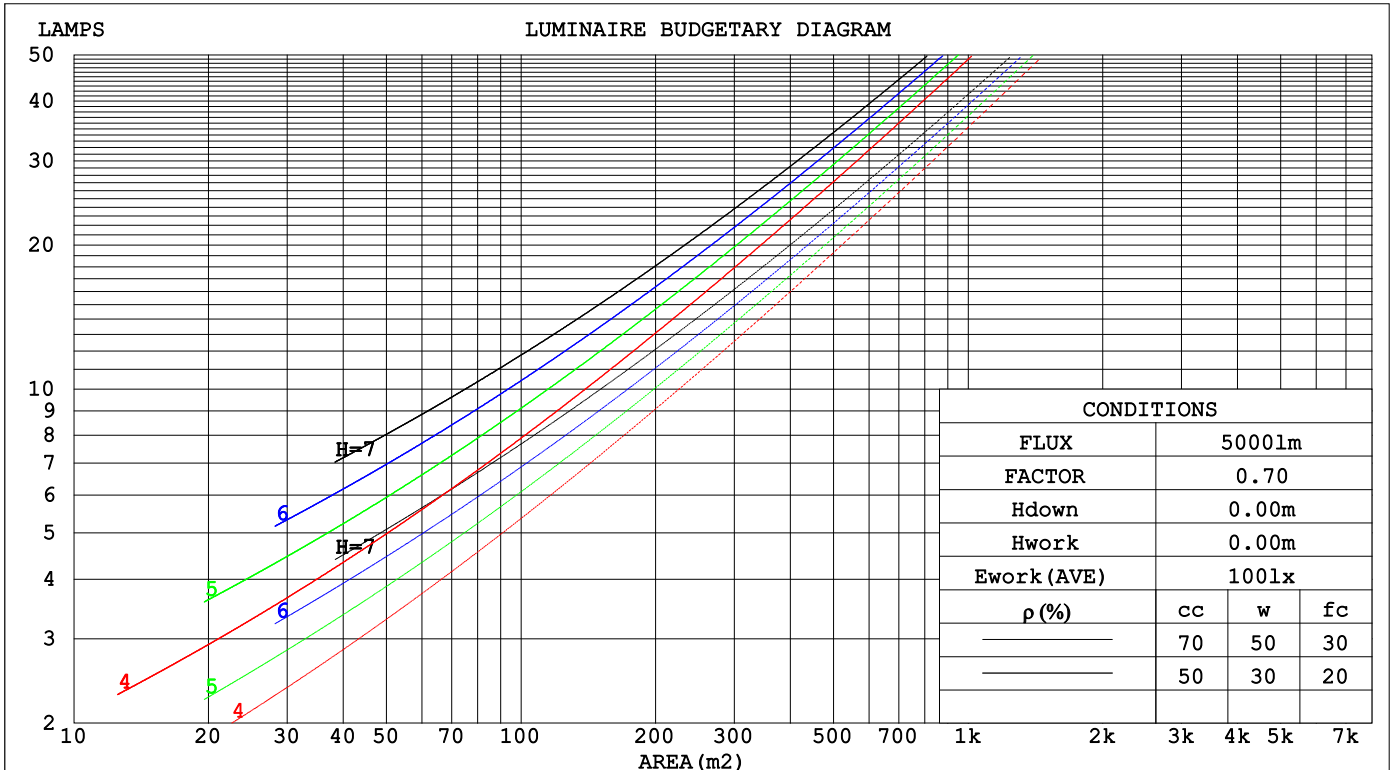
C Range: 0 - 360DEG
 C Interval: 22.5DEG
 Test Speed: HIGH
 Temperature:25.2℃
 Operators:Dano
 Test Date:2023-06-13

γ Range: 0 - 180DEG
 γ Interval: 1.0DEG
 Test System:EVERFINE GO-R5000_V2 SYSTEM V2.00.459
 Humidity:55.3%
 Test Distance:2.900m [K=0.8810]
 Remarks:

CU AND LUMINAIRE BUDGETARY ESTIMATE DIAGRAM

Test:U:119.9V I:0.3167A P:37.56W PF:0.9889 Freq:60.01Hz Lamp Flux:2456.47x1 lm		
NAME: PT07-44-40S-952C5-MVTD-BK 3000K	TYPE:	WEIGHT:
SPEC.:	DIM.:	SERIAL No.:
MFR.: FOSHAN LEDKEY LIGHTING CO.,LTD.	SUR.:	Shielding Angle:

ρcc	80%			70%			50%			30%			10%			0
ρw	50%	30%	10%	50%	30%	10%	50%	30%	10%	50%	30%	10%	50%	30%	10%	0
ρfc	20%			20%			20%			20%			20%			0
RCR	RCR:Room Cavity Ratio						Coefficients of Utilization(CU)									
0.0	1.06	1.06	1.06	.97	.97	.97	.80	.80	.80	.65	.65	.65	.51	.51	.51	.44
1.0	.88	.83	.79	.80	.76	.72	.66	.63	.60	.52	.50	.48	.40	.38	.37	.31
2.0	.76	.68	.62	.69	.63	.57	.56	.52	.48	.45	.41	.38	.34	.32	.29	.24
3.0	.66	.58	.51	.60	.53	.47	.49	.44	.39	.39	.35	.32	.30	.27	.24	.20
4.0	.58	.49	.43	.53	.45	.39	.43	.37	.33	.34	.30	.27	.26	.23	.20	.16
5.0	.51	.43	.36	.47	.39	.34	.39	.33	.28	.31	.26	.23	.23	.20	.18	.14
6.0	.46	.37	.31	.42	.34	.29	.35	.29	.24	.28	.23	.20	.21	.18	.15	.12
7.0	.41	.33	.27	.38	.30	.25	.31	.25	.21	.25	.21	.17	.19	.16	.14	.11
8.0	.37	.29	.24	.34	.27	.22	.28	.23	.19	.23	.19	.15	.18	.14	.12	.10
9.0	.34	.26	.21	.31	.24	.20	.26	.21	.17	.21	.17	.14	.16	.13	.11	.09
10.0	.31	.24	.19	.29	.22	.18	.24	.19	.15	.19	.15	.12	.15	.12	.10	.08



C Range: 0 - 360DEG
 C Interval: 22.5DEG
 Test Speed: HIGH
 Temperature:25.2°C
 Operators:Dano
 Test Date:2023-06-13

γ Range: 0 - 180DEG
 γ Interval: 1.0DEG
 Test System:EVERFINE GO-R5000_V2 SYSTEM V2.00.459
 Humidity:55.3%
 Test Distance:2.900m [K=0.8810]
 Remarks:

WEC AND CCEC

Test:U:119.9V I:0.3167A P:37.56W PF:0.9889 Freq:60.01Hz Lamp Flux:2456.47x1 lm		
NAME: PT07-44-40S-952C5-MVTD-BK 3000K	TYPE:	WEIGHT:
SPEC.:	DIM.:	SERIAL No.:
MFR.: FOSHAN LEDKEY LIGHTING CO.,LTD.	SUR.:	Shielding Angle:

ρcc	80%			70%			50%			30%			10%			0
ρw	50%	30%	10%	50%	30%	10%	50%	30%	10%	50%	30%	10%	50%	30%	10%	0
ρfc	20%			20%			20%			20%			20%			0
RCR	RCR:Room Cavity Ratio						Wall Exitance Coefficients(WEC)									
0.0																
1.0	.355	.202	.064	.331	.189	.060	.286	.164	.052	.244	.141	.045	.206	.119	.039	
2.0	.304	.166	.051	.282	.155	.048	.241	.134	.042	.202	.114	.036	.167	.095	.030	
3.0	.269	.143	.043	.249	.133	.040	.211	.115	.035	.176	.097	.030	.144	.080	.025	
4.0	.243	.126	.037	.224	.117	.035	.190	.101	.030	.157	.085	.025	.127	.069	.021	
5.0	.221	.113	.033	.204	.105	.031	.172	.090	.026	.142	.075	.022	.115	.061	.018	
6.0	.203	.102	.029	.188	.095	.027	.158	.081	.024	.130	.068	.020	.105	.055	.016	
7.0	.188	.093	.026	.173	.086	.025	.146	.074	.021	.120	.062	.018	.096	.050	.015	
8.0	.175	.085	.024	.161	.079	.022	.136	.068	.019	.112	.057	.016	.089	.046	.013	
9.0	.163	.079	.022	.151	.073	.021	.127	.063	.018	.104	.052	.015	.083	.042	.012	
10.0	.153	.073	.020	.141	.068	.019	.119	.058	.016	.098	.049	.014	.078	.039	.011	

ρcc	80%			70%			50%			30%			10%			0
ρw	50%	30%	10%	50%	30%	10%	50%	30%	10%	50%	30%	10%	50%	30%	10%	0
ρfc	20%			20%			20%			20%			20%			0
RCR	RCR:Room Cavity Ratio						Ceiling Cavity Exitance Coefficients(CCEC)									
0.0	.618	.618	.618	.528	.528	.528	.361	.361	.361	.207	.207	.207	.066	.066	.066	
1.0	.615	.587	.562	.526	.504	.484	.360	.347	.334	.207	.201	.194	.066	.065	.063	
2.0	.608	.566	.531	.521	.487	.459	.357	.337	.320	.206	.196	.188	.066	.063	.061	
3.0	.601	.551	.511	.515	.475	.443	.354	.330	.311	.204	.193	.183	.066	.063	.060	
4.0	.594	.539	.498	.509	.466	.432	.350	.325	.304	.203	.190	.180	.065	.062	.059	
5.0	.587	.530	.488	.504	.459	.425	.347	.320	.300	.201	.188	.178	.065	.061	.059	
6.0	.580	.523	.482	.498	.453	.420	.344	.317	.297	.199	.186	.176	.064	.061	.058	
7.0	.573	.517	.477	.493	.448	.416	.341	.314	.294	.198	.185	.175	.064	.061	.058	
8.0	.567	.512	.473	.489	.444	.413	.338	.312	.293	.197	.184	.174	.064	.060	.058	
9.0	.562	.507	.470	.484	.440	.410	.335	.309	.291	.195	.183	.174	.063	.060	.058	
10.0	.557	.503	.468	.480	.437	.408	.333	.308	.290	.194	.182	.173	.063	.060	.057	

C Range: 0 - 360DEG
 C Interval: 22.5DEG
 Test Speed: HIGH
 Temperature:25.2℃
 Operators:Dano
 Test Date:2023-06-13

γ Range: 0 - 180DEG
 γ Interval: 1.0DEG
 Test System:EVERFINE GO-R5000_V2 SYSTEM V2.00.459
 Humidity:55.3%
 Test Distance:2.900m [K=0.8810]
 Remarks:

UGR(Unified Glare Rating) Table

Test:U:119.9V I:0.3167A P:37.56W PF:0.9889 Freq:60.01Hz										
Lamp Flux:2456.47x1 lm										
NAME: PT07-44-40S-952C5-MVTD-BK 3000K					TYPE:			WEIGHT:		
SPEC.:					DIM.:			SERIAL No.:		
MFR.: FOSHAN LEDKEY LIGHTING CO.,LTD.					SUR.:			Shielding Angle:		
ceiling/cavity	0.7	0.7	0.5	0.5	0.3	0.7	0.7	0.5	0.5	0.3
walls	0.5	0.3	0.5	0.3	0.3	0.5	0.3	0.5	0.3	0.3
working plane	0.2	0.2	0.2	0.2	0.2	0.2	0.2	0.2	0.2	0.2
Room dimensions	Viewed crosswise					Viewed endwise				
x = 2H y = 2H	0.2	2.0	2.1	4.0	6.5	4.8	6.7	6.7	8.6	11.2
3H	5.0	6.7	6.9	8.6	11.3	6.3	7.9	8.2	9.9	12.5
4H	7.9	9.4	9.8	11.4	14.1	6.8	8.4	8.8	10.4	13.0
6H	10.9	12.4	12.9	14.4	17.0	7.2	8.6	9.2	10.7	13.3
8H	12.4	13.9	14.5	15.9	18.6	7.2	8.7	9.2	10.7	13.4
12H	14.2	15.5	16.2	17.6	20.3	7.2	8.6	9.3	10.6	13.4
4H 2H	0.2	1.7	2.1	3.7	6.4	6.0	7.6	8.0	9.6	12.2
3H	5.4	6.7	7.4	8.8	11.5	7.9	9.3	9.9	11.3	14.0
4H	8.5	9.8	10.6	11.9	14.6	8.7	9.9	10.7	12.0	14.7
6H	11.8	12.9	13.9	15.0	17.8	9.3	10.4	11.4	12.5	15.3
8H	13.6	14.6	15.6	16.7	19.5	9.5	10.6	11.6	12.6	15.4
12H	15.4	16.4	17.5	18.5	21.3	9.6	10.6	11.7	12.7	15.5
8H 4H	8.7	9.7	10.8	11.8	14.6	10.4	11.5	12.5	13.6	16.3
6H	12.4	13.3	14.5	15.4	18.2	11.6	12.5	13.7	14.6	17.4
8H	14.4	15.2	16.5	17.3	20.2	12.1	12.9	14.2	15.0	17.9
12H	16.6	17.3	18.7	19.4	22.3	12.4	13.1	14.6	15.3	18.2
12H 4H	8.6	9.6	10.7	11.7	14.5	11.0	12.0	13.1	14.1	16.9
6H	12.5	13.2	14.6	15.4	18.2	12.5	13.3	14.7	15.5	18.3
8H	14.6	15.3	16.7	17.4	20.3	13.3	14.0	15.4	16.1	19.0
CIE190: 2010										

CIE190: 2010
Area: 0.36 m2

C Range: 0 - 360DEG
C Interval: 22.5DEG
Test Speed: HIGH
Temperature:25.2℃
Operators:Dano
Test Date:2023-06-13

γ Range: 0 - 180DEG
γ Interval: 1.0DEG
Test System:EVERFINE GO-R5000_V2 SYSTEM V2.00.459
Humidity:55.3%
Test Distance:2.900m [K=0.8810]
Remarks:

UTILIZATION FACTORS TABLE

Test:U:119.9V I:0.3167A P:37.56W PF:0.9889 Freq:60.01Hz Lamp Flux:2456.47x1 lm		
NAME: PT07-44-40S-952C5-MVTD-BK 3000K	TYPE:	WEIGHT:
SPEC.:	DIM.:	SERIAL No.:
MFR.: FOSHAN LEDKEY LIGHTING CO.,LTD.	SUR.:	Shielding Angle:

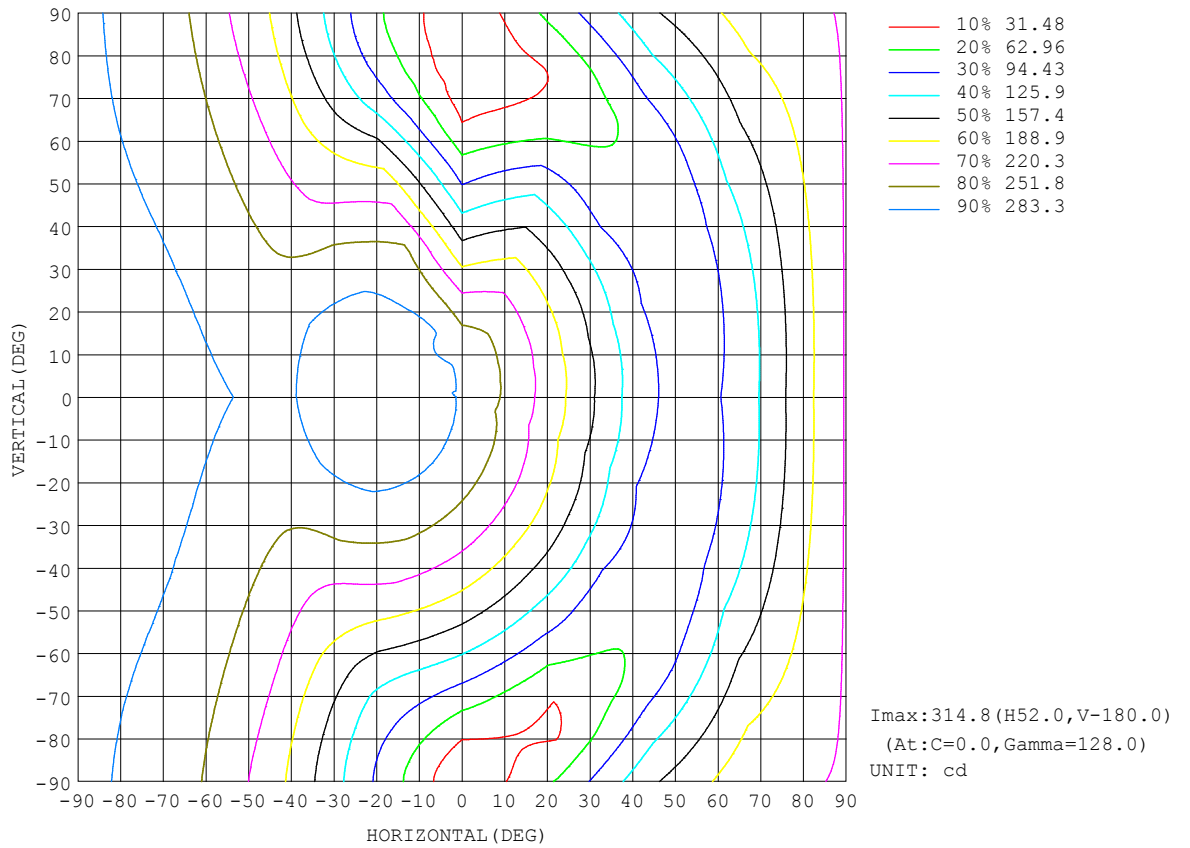
REFLECTANCE										
Ceiling	0.8	0.8	0.8	0.7	0.7	0.7	0.5	0.5	0.5	0
Walls	0.7	0.5	0.3	0.7	0.5	0.3	0.7	0.5	0.3	0
Working plane	0.2	0.2	0.2	0.2	0.2	0.2	0.2	0.2	0.2	0
ROOM INDEX	UTILIZATION FACTORS (PERCENT) $k(RI) \times RCR = 5$									
k = 0.60	39	27	20	36	26	19	32	23	18	10
0.80	47	35	27	44	33	26	38	29	23	13
1.00	54	41	33	51	39	31	43	36	28	16
1.25	61	48	40	57	45	37	48	39	33	19
1.50	66	54	45	61	50	42	52	43	37	21
2.00	74	62	53	68	57	50	57	49	43	24
2.50	78	68	59	72	63	55	60	53	47	26
3.00	82	72	64	75	67	60	63	56	51	28
4.00	87	78	72	80	72	66	66	61	56	30
5.00	90	83	76	82	76	71	68	63	59	32
ROOM INDEX	UF(total)									Direct
According to DIN EN 13032-2 2004			Suspended				SHRNOM = 1.25			

C Range: 0 - 360DEG
 C Interval: 22.5DEG
 Test Speed: HIGH
 Temperature:25.2°C
 Operators:Dano
 Test Date:2023-06-13

γ Range: 0 - 180DEG
 γ Interval: 1.0DEG
 Test System:EVERFINE GO-R5000_V2 SYSTEM V2.00.459
 Humidity:55.3%
 Test Distance:2.900m [K=0.8810]
 Remarks:

ISOCANDELA DIAGRAM

Test:U:119.9V I:0.3167A P:37.56W PF:0.9889 Freq:60.01Hz Lamp Flux:2456.47x1 lm		
NAME: PT07-44-40S-952C5-MVTD-BK 3000K	TYPE:	WEIGHT:
SPEC.:	DIM.:	SERIAL No.:
MFR.: FOSHAN LEDKEY LIGHTING CO.,LTD.	SUR.:	Shielding Angle:



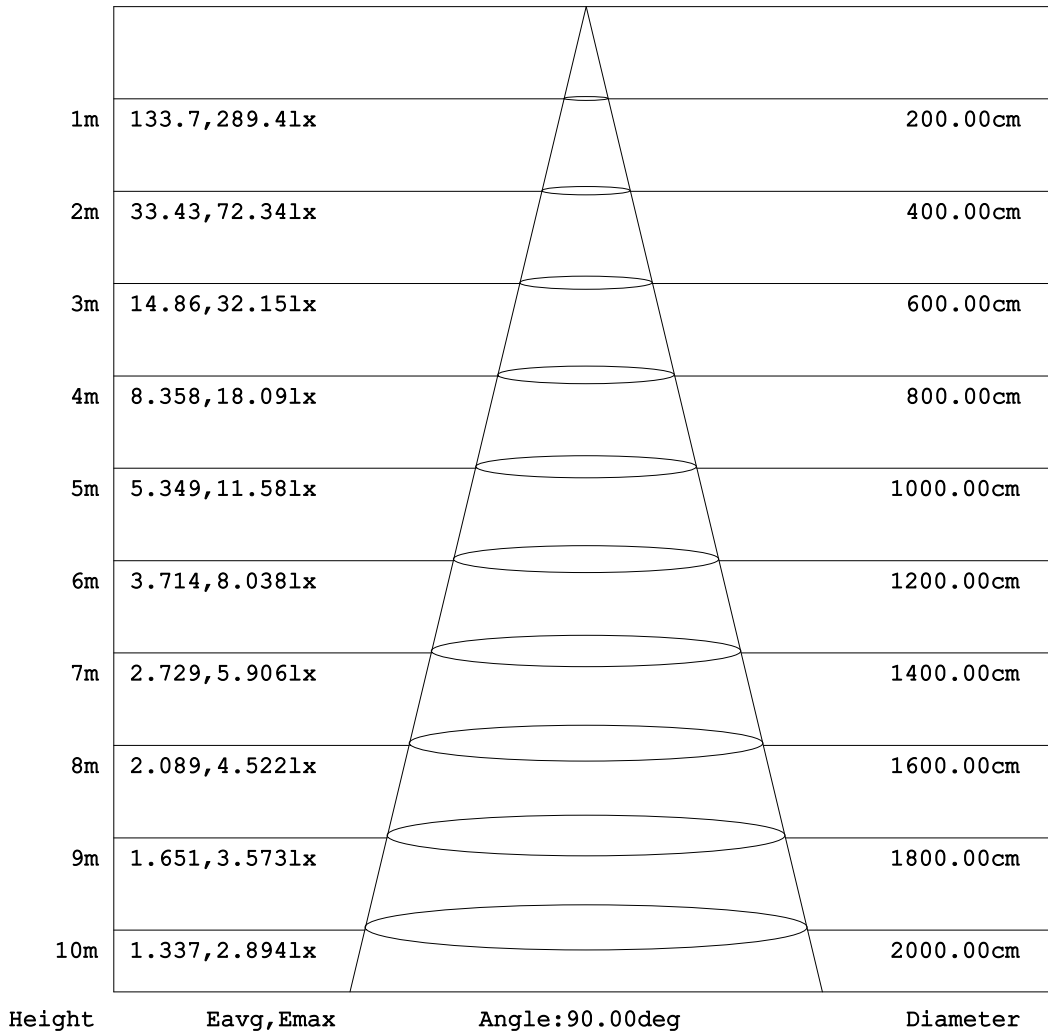
C Range: 0 - 360DEG
C Interval: 22.5DEG
Test Speed: HIGH
Temperature:25.2°C
Operators:Dano
Test Date:2023-06-13

γ Range: 0 - 180DEG
γ Interval: 1.0DEG
Test System:EVERFINE GO-R5000_V2 SYSTEM V2.00.459
Humidity:55.3%
Test Distance:2.900m [K=0.8810]
Remarks:

AAI Figure

Test:U:119.9V I:0.3167A P:37.56W PF:0.9889 Freq:60.01Hz Lamp Flux:2456.47x1 lm		
NAME: PT07-44-40S-952C5-MVTD-BK 3000K	TYPE:	WEIGHT:
SPEC.:	DIM.:	SERIAL No.:
MFR.: FOSHAN LEDKEY LIGHTING CO.,LTD.	SUR.:	Shielding Angle:

Flux out:420.1 lm



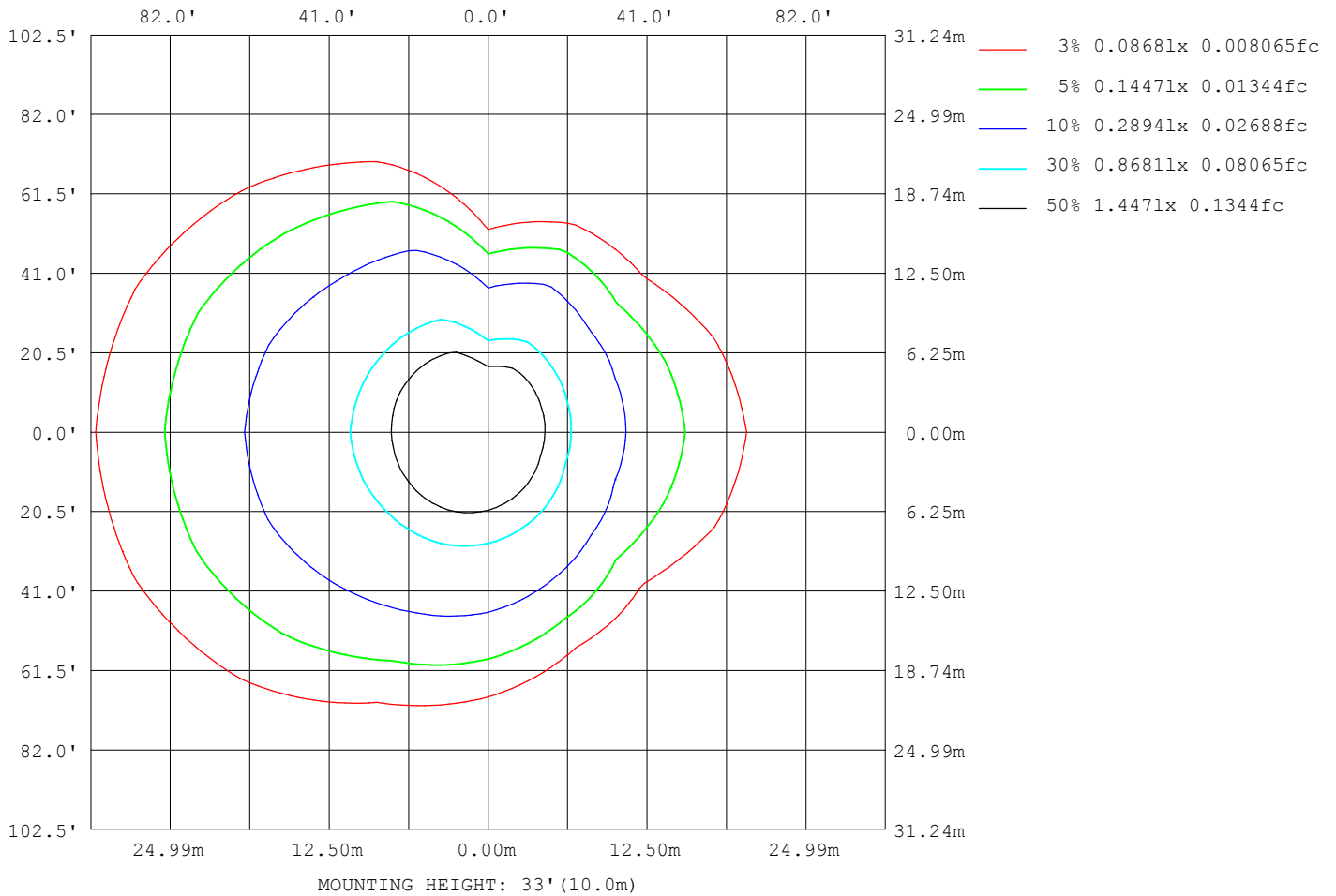
Note:The Curves indicate the illuminated area and the average illumination when the luminaire is at different distance.

C Range: 0 - 360DEG
 C Interval: 22.5DEG
 Test Speed: HIGH
 Temperature:25.2℃
 Operators:Dano
 Test Date:2023-06-13

γ Range: 0 - 180DEG
 γ Interval: 1.0DEG
 Test System:EVERFINE GO-R5000_V2 SYSTEM V2.00.459
 Humidity:55.3%
 Test Distance:2.900m [K=0.8810]
 Remarks:

ISOLUX DIAGRAM

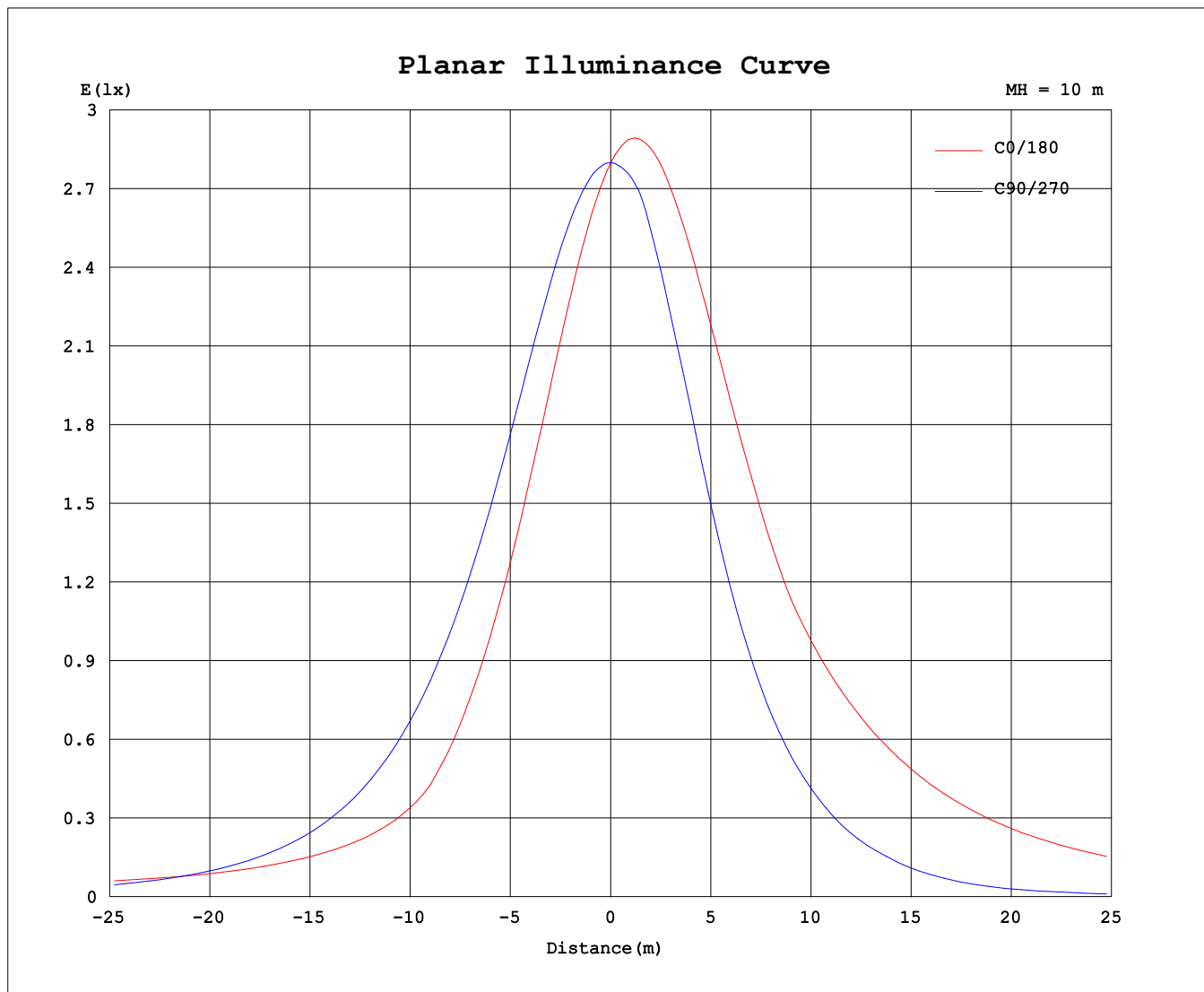
Test:U:119.9V I:0.3167A P:37.56W PF:0.9889 Freq:60.01Hz Lamp Flux:2456.47x1 lm		
NAME: PT07-44-40S-952C5-MVTD-BK 3000K	TYPE:	WEIGHT:
SPEC.:	DIM.:	SERIAL No.:
MFR.: FOSHAN LEDKEY LIGHTING CO.,LTD.	SUR.:	Shielding Angle:



C Range: 0 - 360DEG
 C Interval: 22.5DEG
 Test Speed: HIGH
 Temperature:25.2°C
 Operators:Dano
 Test Date:2023-06-13

γ Range: 0 - 180DEG
 γ Interval: 1.0DEG
 Test System:EVERFINE GO-R5000_V2 SYSTEM V2.00.459
 Humidity:55.3%
 Test Distance:2.900m [K=0.8810]
 Remarks:

Planar Illuminance Curve



C Range: 0 - 360DEG
 C Interval: 22.5DEG
 Test Speed: HIGH
 Temperature: 25.2°C
 Operators: Dano
 Test Date: 2023-06-13

γ Range: 0 - 180DEG
 γ Interval: 1.0DEG
 Test System: EVERFINE GO-R5000_V2 SYSTEM V2.00.459
 Humidity: 55.3%
 Test Distance: 2.900m [K=0.8810]
 Remarks:

LUMINOUS DISTRIBUTION INTENSITY DATA

Test:U:119.9V I:0.3167A P:37.56W PF:0.9889 Freq:60.01Hz Lamp Flux:2456.47x1 lm		
NAME: PT07-44-40S-952C5-MVTD-BK 3000K	TYPE:	WEIGHT:
SPEC.:	DIM.:	SERIAL No.:
MFR.: FOSHAN LEDKEY LIGHTING CO.,LTD.	SUR.:	Shielding Angle:

Table--1

UNIT: cd

C (DEG) γ (DEG)	0	22.5	45	67.5	90	112.5	135	157.5	180	202.5	225	247.5	270	292.5	315	337.5			
0	279	279	279	279	279	279	279	279	279	279	279	279	279	279	279	279			
5	265	265	269	273	278	283	288	291	292	291	288	284	279	273	269	266			
10	248	248	256	264	275	285	293	298	301	300	294	280	273	265	257	251			
15	228	230	240	254	269	283	295	303	306	306	297	280	258	254	242	233			
20	208	210	224	241	260	279	294	304	308	309	297	279	240	240	225	213			
25	185	188	205	226	250	272	290	301	306	308	294	271	217	224	206	191			
30	162	165	185	210	238	264	283	295	301	303	288	263	191	207	186	169			
35	138	142	164	192	223	252	273	286	292	295	279	257	165	188	164	145			
40	113	117	142	173	207	239	260	274	280	284	267	245	140	166	141	120			
45	96.2	95.3	119	152	190	223	245	264	276	270	253	228	117	146	117	97.9			
50	90.0	86.5	95.8	130	170	205	229	265	280	267	236	212	93.1	125	92.2	88.3			
55	89.3	83.9	75.0	108	149	185	222	268	284	269	222	191	71.2	102	76.8	84.6			
60	93.4	86.6	66.1	84.4	127	164	219	271	289	272	216	169	47.9	75.3	69.0	85.8			
65	104	95.4	63.8	60.6	104	142	218	274	293	274	211	145	29.9	51.4	66.9	93.0			
70	128	117	68.3	38.3	79.6	128	216	276	295	275	208	120	18.0	37.7	71.9	113			
75	153	143	84.7	28.2	55.2	118	215	277	296	275	204	104	10.0	33.1	91.5	137			
80	178	167	108	29.2	32.4	110	212	276	295	273	199	90.9	3.63	41.5	113	160			
85	201	191	132	45.9	12.9	105	209	274	293	270	194	81.3	1.32	59.4	134	182			
90	223	213	154	65.7	1.91	102	206	270	290	266	188	76.4	1.67	77.8	154	203			
95	243	234	175	85.8	10.0	104	203	267	286	261	185	79.9	8.10	95.8	173	223			
100	262	252	194	105	28.3	118	204	264	283	258	186	96.7	26.1	113	191	241			
105	277	268	212	123	51.8	134	215	267	283	259	200	112	45.2	129	206	257			
110	291	282	226	139	79.2	148	229	279	294	271	214	126	65.3	143	220	271			
115	302	292	238	153	107	160	239	289	304	282	225	139	83.8	156	231	282			
120	310	300	248	166	134	170	247	296	311	290	233	152	105	167	240	290			
125	314	304	253	180	160	181	252	299	314	295	238	170	128	161	247	295			
130	314	304	257	199	184	197	254	299	313	295	241	188	152	184	250	296			
135	311	300	257	217	206	215	253	295	309	293	242	206	177	203	250	294			
140	304	293	258	232	225	231	253	288	301	288	247	224	206	219	246	288			
145	294	285	261	244	239	246	259	279	289	281	256	241	225	229	239	278			
150	286	284	262	252	243	260	268	278	283	280	266	256	220	224	249	273			
155	285	287	268	241	237	270	276	282	284	284	276	269	203	192	247	264			
160	288	289	260	223	226	272	285	286	287	289	284	278	194	171	210	259			
165	287	272	234	208	211	249	288	293	292	294	290	275	184	175	184	214			
170	277	217	215	213	212	217	269	295	288	293	275	256	205	199	183	182			
175	226	190	220	224	230	222	237	241	257	270	241	227	220	222	212	200			
180	33.2	211	223	236	240	234	213	177	97.4	139	197	219	236	240	233	215			

C Range: 0 - 360DEG
 C Interval: 22.5DEG
 Test Speed: HIGH
 Temperature:25.2℃
 Operators:Dano
 Test Date:2023-06-13

γ Range: 0 - 180DEG
 γ Interval: 1.0DEG
 Test System:EVERFINE GO-R5000_V2 SYSTEM V2.00.459
 Humidity:55.3%
 Test Distance:2.900m [K=0.8810]
 Remarks: