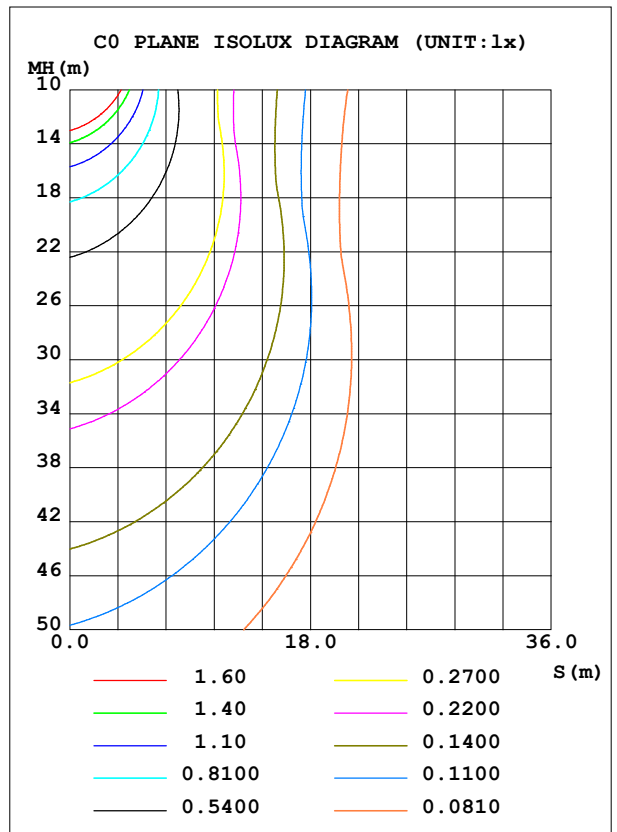
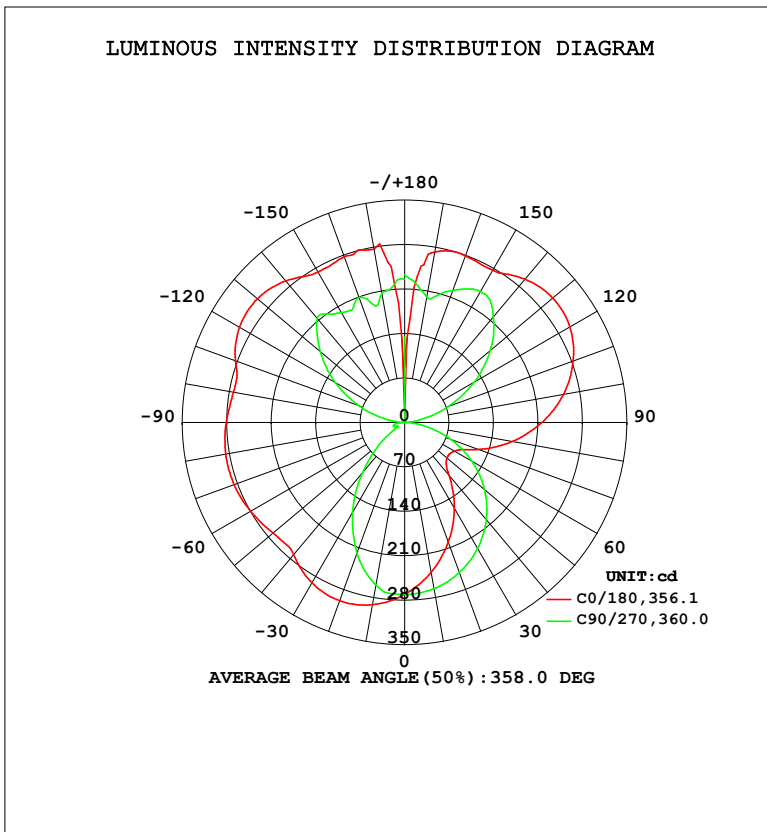


LUMINAIRE PHOTOMETRIC TEST REPORT

Test:U:120.0V I:0.3141A P:37.26W PF:0.9888 Freq:60.01Hz Lamp Flux:2378.95x1 lm		
NAME: PT07-44-40S-952C5-MVTD-BK 2700K	TYPE:	WEIGHT:
SPEC.:	DIM.:	SERIAL No.:
MFR.: FOSHAN LEDKEY LIGHTING CO.,LTD.	SUR.:	Shielding Angle:

DATA OF LAMP		PHOTOMETRIC DATA				Eff: 63.84 lm/W
MODEL		Imax (cd)	305.0	S/MH (C0/180)	1.57	
NOMINAL POWER (W)		LOR (%)	100.0	S/MH (C90/270)	0.98	
RATED VOLTAGE (V)	120	TOTAL FLUX (lm)	2379.0	$\eta$ UP, DN (C0-180)	28.5, 21.1	
NOMINAL FLUX (lm)	2378.95	CIE CLASS	DIFFUSE	$\eta$ UP, DN (C180-360)	27.9, 22.5	
LAMPS INSIDE	1	$\eta$ up (%)	56.3	CIBSE SHR NOM	1.25	
TEST VOLTAGE (V)	120	$\eta$ down (%)	43.7	CIBSE SHR MAX	1.35	



C Range: 0 - 360DEG  
 C Interval: 22.5DEG  
 Test Speed: HIGH  
 Temperature: 25.2°C  
 Operators: Dano  
 Test Date: 2023-06-13

$\gamma$  Range: 0 - 180DEG  
 $\gamma$  Interval: 1.0DEG  
 Test System: EVERFINE GO-R5000\_V2 SYSTEM V2.00.459  
 Humidity: 55.3%  
 Test Distance: 2.900m [K=0.8810]  
 Remarks:

ZONAL FLUX DIAGRAM

ZONAL FLUX DIAGRAM:

γ	C0	C45	C90	C135	C180	C225	C270	C315	γ	Φ zone	Φ total	%lum,lamp
10	239.9	247.8	265.8	283.8	291.4	284.4	260.4	248.3	0- 10	25.61	25.61	1.08,1.08
20	200.9	216.7	251.7	285.6	298.8	287.1	219.4	217.2	10- 20	72.92	98.53	4.14,4.14
30	156.8	179.5	229.6	275.8	291.8	277.9	164.2	179.2	20- 30	109.2	207.8	8.73,8.73
40	109.4	137.6	200.2	255.0	272.0	257.2	103.2	135.5	30- 40	129.7	337.5	14.2,14.2
50	87.36	92.68	164.1	224.2	270.7	226.3	47.63	87.94	40- 50	133.6	471.1	19.8,19.8
60	90.83	66.31	122.3	206.2	279.9	214.3	13.05	64.35	50- 60	132.3	603.4	25.4,25.4
70	124.9	69.35	76.59	201.5	285.9	208.5	18.54	67.28	60- 70	133.6	737.1	31,31
80	172.5	108.3	31.10	196.8	286.1	200.6	14.37	107.6	70- 80	143.6	880.7	37,37
90	216.1	152.8	0.8500	189.9	280.9	190.6	0.7540	147.4	80- 90	158.4	1039	43.7,43.7
100	253.8	192.2	22.63	187.6	273.7	189.2	28.30	182.3	90-100	174.7	1214	51,51
110	282.4	223.7	71.97	211.5	283.6	215.2	76.24	210.3	100-110	195.3	1409	59.2,59.2
120	300.4	244.6	126.1	230.9	300.3	232.2	126.3	229.6	110-120	209.8	1619	68,68
130	304.7	253.4	176.1	239.4	302.8	238.6	173.1	238.3	120-130	207.4	1826	76.8,76.8
140	294.6	251.7	217.8	240.6	291.1	242.1	214.5	226.6	130-140	189.5	2016	84.7,84.7
150	277.0	260.7	237.8	257.1	273.8	258.5	199.8	242.1	140-150	157.5	2173	91.3,91.3
160	279.3	254.2	221.3	275.3	277.6	274.7	209.9	186.9	150-160	116.2	2289	96.2,96.2
170	272.3	205.7	200.8	264.4	277.5	264.1	206.7	186.0	160-170	68.31	2358	99.1,99.1
180	87.65	210.0	232.4	213.3	112.1	180.5	225.5	227.3	170-180	21.36	2379	100,100
DEG	LUMINOUS INTENSITY:cd									UNIT:lm		

Conical surface Flux(90deg): 404.33 lm

%lum = 17.0%

%lamp = 17.0%

Conical surface Flux(120deg): 603.43 lm

%lum = 25.4%

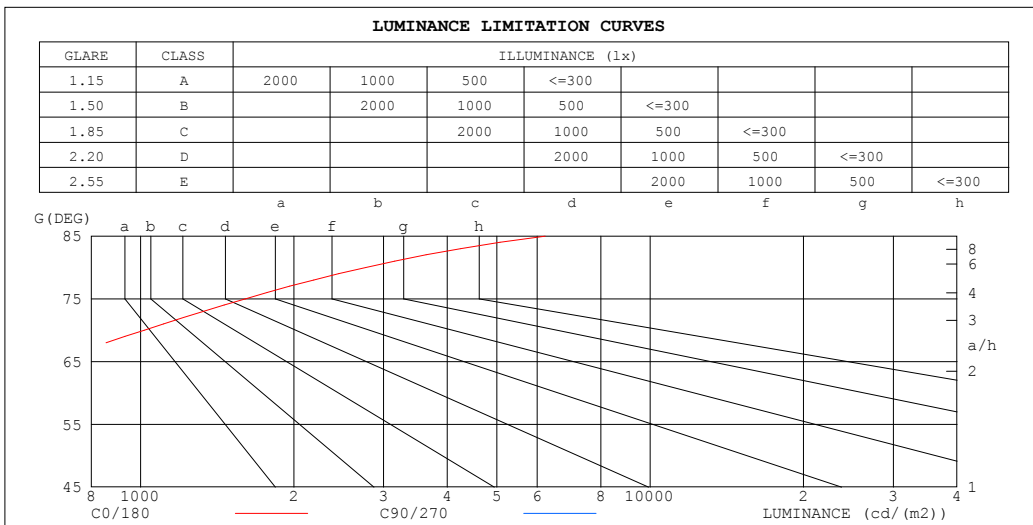
%lamp = 25.4%

C Range: 0 - 360DEG  
 C Interval: 22.5DEG  
 Test Speed: HIGH  
 Temperature:25.2℃  
 Operators:Dano  
 Test Date:2023-06-13

γ Range: 0 - 180DEG  
 γ Interval: 1.0DEG  
 Test System:EVERFINE GO-R5000\_V2 SYSTEM V2.00.459  
 Humidity:55.3%  
 Test Distance:2.900m [K=0.8810]  
 Remarks:

LUMINANCE LIMITATION CURVES

Test:U:120.0V I:0.3141A P:37.26W PF:0.9888 Freq:60.01Hz Lamp Flux:2378.95x1 lm		
NAME: PT07-44-40S-952C5-MVTD-BK 2700K	TYPE:	WEIGHT:
SPEC.:	DIM.:	SERIAL No.:
MFR.: FOSHAN LEDKEY LIGHTING CO.,LTD.	SUR.:	Shielding Angle:



LUMINANCE cd/(m2)		
G (DEG)	C0/180	C90/270
85	6227	390
80	2766	499
75	1604	572
70	1017	624
65	669	659
60	506	681
55	421	699
50	378	711
45	367	721

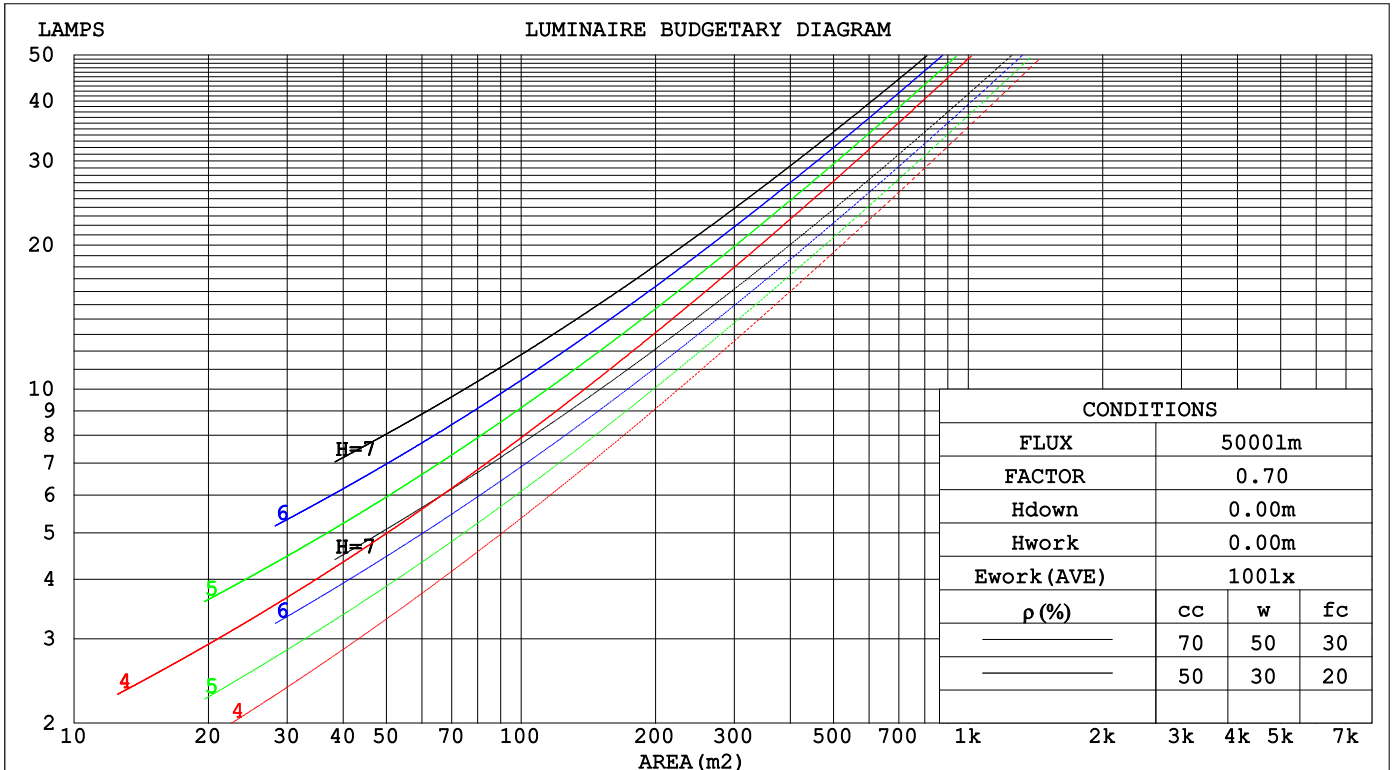
C Range: 0 - 360DEG  
 C Interval: 22.5DEG  
 Test Speed: HIGH  
 Temperature:25.2℃  
 Operators:Dano  
 Test Date:2023-06-13

γ Range: 0 - 180DEG  
 γ Interval: 1.0DEG  
 Test System:EVERFINE GO-R5000\_V2 SYSTEM V2.00.459  
 Humidity:55.3%  
 Test Distance:2.900m [K=0.8810]  
 Remarks:

**CU AND LUMINAIRE BUDGETARY ESTIMATE DIAGRAM**

Test:U:120.0V I:0.3141A P:37.26W PF:0.9888 Freq:60.01Hz Lamp Flux:2378.95x1 lm		
NAME: PT07-44-40S-952C5-MVTD-BK 2700K	TYPE:	WEIGHT:
SPEC.:	DIM.:	SERIAL No.:
MFR.: FOSHAN LEDKEY LIGHTING CO.,LTD.	SUR.:	Shielding Angle:

ρcc	80%			70%			50%			30%			10%			0
ρw	50%	30%	10%	50%	30%	10%	50%	30%	10%	50%	30%	10%	50%	30%	10%	0
ρfc	20%			20%			20%			20%			20%			0
RCR	RCR:Room Cavity Ratio						Coefficients of Utilization(CU)									
0.0	1.06	1.06	1.06	.97	.97	.97	.80	.80	.80	.64	.64	.64	.50	.50	.50	.44
1.0	.88	.83	.79	.80	.76	.72	.66	.62	.59	.52	.50	.48	.40	.38	.37	.31
2.0	.76	.68	.62	.69	.63	.57	.56	.52	.48	.45	.41	.38	.34	.31	.29	.24
3.0	.66	.58	.51	.60	.53	.47	.49	.44	.39	.39	.35	.31	.29	.27	.24	.20
4.0	.58	.49	.43	.53	.45	.39	.43	.37	.33	.34	.30	.26	.26	.23	.20	.16
5.0	.51	.43	.36	.47	.39	.33	.38	.33	.28	.31	.26	.23	.23	.20	.17	.14
6.0	.46	.37	.31	.42	.34	.29	.35	.29	.24	.28	.23	.20	.21	.18	.15	.12
7.0	.41	.33	.27	.38	.30	.25	.31	.25	.21	.25	.21	.17	.19	.16	.13	.11
8.0	.37	.29	.24	.34	.27	.22	.28	.23	.19	.23	.19	.15	.18	.14	.12	.09
9.0	.34	.26	.21	.31	.24	.20	.26	.20	.17	.21	.17	.14	.16	.13	.11	.09
10.0	.31	.24	.19	.29	.22	.18	.24	.19	.15	.19	.15	.12	.15	.12	.10	.08



C Range: 0 - 360DEG  
 C Interval: 22.5DEG  
 Test Speed: HIGH  
 Temperature:25.2°C  
 Operators:Dano  
 Test Date:2023-06-13

γ Range: 0 - 180DEG  
 γ Interval: 1.0DEG  
 Test System:EVERFINE GO-R5000\_V2 SYSTEM V2.00.459  
 Humidity:55.3%  
 Test Distance:2.900m [K=0.8810]  
 Remarks:

WEC AND CCEC

Test:U:120.0V I:0.3141A P:37.26W PF:0.9888 Freq:60.01Hz Lamp Flux:2378.95x1 lm		
NAME: PT07-44-40S-952C5-MVTD-BK 2700K	TYPE:	WEIGHT:
SPEC.:	DIM.:	SERIAL No.:
MFR.: FOSHAN LEDKEY LIGHTING CO.,LTD.	SUR.:	Shielding Angle:

ρ <sub>cc</sub>	80%			70%			50%			30%			10%			0
ρ <sub>w</sub>	50%	30%	10%	50%	30%	10%	50%	30%	10%	50%	30%	10%	50%	30%	10%	0
ρ <sub>fc</sub>	20%			20%			20%			20%			20%			0
RCR	RCR:Room Cavity Ratio						Wall Exitance Coefficients(WEC)									
0.0																
1.0	.356	.202	.064	.332	.189	.060	.286	.164	.052	.245	.141	.045	.206	.120	.039	
2.0	.304	.167	.051	.282	.155	.048	.241	.134	.042	.202	.114	.036	.167	.095	.030	
3.0	.269	.143	.043	.249	.133	.040	.211	.115	.035	.176	.097	.030	.144	.080	.025	
4.0	.243	.126	.037	.224	.117	.035	.189	.100	.030	.157	.084	.025	.127	.069	.021	
5.0	.221	.113	.033	.204	.105	.031	.172	.090	.026	.142	.075	.022	.114	.061	.018	
6.0	.203	.102	.029	.188	.095	.027	.158	.081	.024	.130	.068	.020	.104	.055	.016	
7.0	.188	.093	.026	.173	.086	.025	.146	.074	.021	.120	.062	.018	.096	.050	.015	
8.0	.175	.085	.024	.161	.079	.022	.136	.068	.019	.111	.056	.016	.089	.046	.013	
9.0	.163	.079	.022	.150	.073	.021	.127	.063	.018	.104	.052	.015	.083	.042	.012	
10.0	.153	.073	.020	.141	.068	.019	.119	.058	.016	.098	.048	.014	.078	.039	.011	

ρ <sub>cc</sub>	80%			70%			50%			30%			10%			0
ρ <sub>w</sub>	50%	30%	10%	50%	30%	10%	50%	30%	10%	50%	30%	10%	50%	30%	10%	0
ρ <sub>fc</sub>	20%			20%			20%			20%			20%			0
RCR	RCR:Room Cavity Ratio						Ceiling Cavity Exitance Coefficients(CCEC)									
0.0	.620	.620	.620	.530	.530	.530	.361	.361	.361	.208	.208	.208	.066	.066	.066	
1.0	.616	.588	.563	.527	.505	.485	.361	.347	.335	.208	.201	.195	.066	.065	.063	
2.0	.609	.567	.532	.522	.488	.460	.358	.338	.321	.206	.197	.188	.066	.064	.061	
3.0	.602	.552	.512	.516	.476	.444	.354	.331	.312	.205	.193	.184	.066	.063	.060	
4.0	.595	.541	.499	.511	.467	.434	.351	.326	.305	.203	.191	.181	.065	.062	.059	
5.0	.588	.532	.490	.505	.460	.426	.348	.321	.301	.202	.189	.179	.065	.062	.059	
6.0	.581	.524	.483	.500	.454	.421	.345	.318	.298	.200	.187	.177	.065	.061	.058	
7.0	.575	.518	.478	.495	.449	.417	.342	.315	.295	.199	.186	.176	.064	.061	.058	
8.0	.569	.513	.475	.490	.445	.414	.339	.313	.294	.197	.184	.175	.064	.060	.058	
9.0	.563	.509	.472	.485	.442	.412	.336	.310	.292	.196	.183	.174	.063	.060	.058	
10.0	.558	.505	.470	.481	.439	.410	.334	.309	.291	.195	.182	.174	.063	.060	.058	

C Range: 0 - 360DEG  
 C Interval: 22.5DEG  
 Test Speed: HIGH  
 Temperature:25.2℃  
 Operators:Dano  
 Test Date:2023-06-13

γ Range: 0 - 180DEG  
 γ Interval: 1.0DEG  
 Test System:EVERFINE GO-R5000\_V2 SYSTEM V2.00.459  
 Humidity:55.3%  
 Test Distance:2.900m [K=0.8810]  
 Remarks:

UGR(Unified Glare Rating) Table

Test:U:120.0V I:0.3141A P:37.26W PF:0.9888 Freq:60.01Hz Lamp Flux:2378.95x1 lm		
NAME: PT07-44-40S-952C5-MVTD-BK 2700K	TYPE:	WEIGHT:
SPEC.:	DIM.:	SERIAL No.:
MFR.: FOSHAN LEDKEY LIGHTING CO.,LTD.	SUR.:	Shielding Angle:

ceiling/cavity	0.7	0.7	0.5	0.5	0.3	0.7	0.7	0.5	0.5	0.3
walls	0.5	0.3	0.5	0.3	0.3	0.5	0.3	0.5	0.3	0.3
working plane	0.2	0.2	0.2	0.2	0.2	0.2	0.2	0.2	0.2	0.2
Room dimensions	Viewed crosswise					Viewed endwise				
x = 2H y = 2H	0.2	2.0	2.1	4.0	6.6	4.7	6.6	6.7	8.5	11.1
3H	5.1	6.7	7.0	8.7	11.3	6.1	7.8	8.0	9.7	12.4
4H	7.9	9.5	9.9	11.5	14.1	6.6	8.2	8.6	10.2	12.8
6H	10.9	12.4	12.9	14.4	17.0	6.9	8.4	8.9	10.4	13.1
8H	12.4	13.8	14.4	15.9	18.6	6.9	8.4	8.9	10.4	13.1
12H	14.1	15.5	16.2	17.5	20.3	6.9	8.3	8.9	10.3	13.0
4H 2H	0.2	1.8	2.2	3.8	6.5	5.8	7.4	7.8	9.4	12.0
3H	5.5	6.8	7.5	8.9	11.6	7.6	8.9	9.6	11.0	13.7
4H	8.6	9.9	10.7	11.9	14.7	8.3	9.5	10.3	11.6	14.4
6H	11.9	13.0	13.9	15.1	17.8	8.8	9.9	10.9	12.0	14.8
8H	13.6	14.6	15.6	16.7	19.5	9.0	10.0	11.1	12.1	14.9
12H	15.4	16.4	17.5	18.5	21.3	9.1	10.0	11.2	12.1	14.9
8H 4H	8.8	9.8	10.9	11.9	14.7	10.0	11.0	12.1	13.1	15.9
6H	12.4	13.3	14.6	15.5	18.3	11.1	11.9	13.2	14.1	16.9
8H	14.4	15.2	16.5	17.3	20.2	11.5	12.3	13.6	14.4	17.3
12H	16.6	17.3	18.7	19.4	22.3	11.8	12.5	13.9	14.6	17.5
12H 4H	8.7	9.7	10.8	11.8	14.6	10.6	11.6	12.7	13.7	16.5
6H	12.5	13.3	14.6	15.4	18.3	12.0	12.8	14.2	15.0	17.8
8H	14.6	15.3	16.8	17.5	20.4	12.7	13.4	14.9	15.6	18.5
CIE190: 2010										

CIE190: 2010  
Area: 0.36 m2

C Range: 0 - 360DEG  
C Interval: 22.5DEG  
Test Speed: HIGH  
Temperature:25.2℃  
Operators:Dano  
Test Date:2023-06-13

γ Range: 0 - 180DEG  
γ Interval: 1.0DEG  
Test System:EVERFINE GO-R5000\_V2 SYSTEM V2.00.459  
Humidity:55.3%  
Test Distance:2.900m [K=0.8810]  
Remarks:

**UTILIZATION FACTORS TABLE**

Test:U:120.0V I:0.3141A P:37.26W PF:0.9888 Freq:60.01Hz Lamp Flux:2378.95x1 lm		
NAME: PT07-44-40S-952C5-MVTD-BK 2700K	TYPE:	WEIGHT:
SPEC.:	DIM.:	SERIAL No.:
MFR.: FOSHAN LEDKEY LIGHTING CO.,LTD.	SUR.:	Shielding Angle:

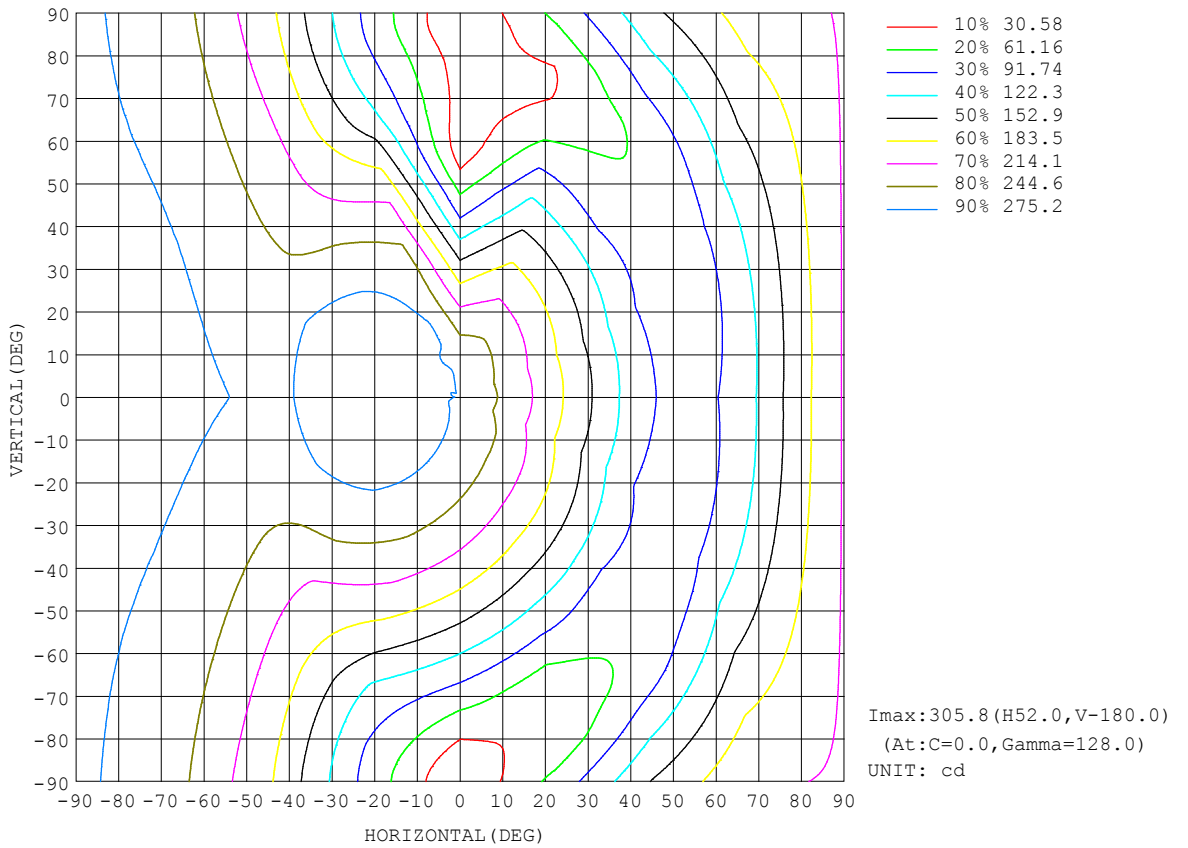
REFLECTANCE										
Ceiling	0.8	0.8	0.8	0.7	0.7	0.7	0.5	0.5	0.5	0
Walls	0.7	0.5	0.3	0.7	0.5	0.3	0.7	0.5	0.3	0
Working plane	0.2	0.2	0.2	0.2	0.2	0.2	0.2	0.2	0.2	0
ROOM INDEX	UTILIZATION FACTORS (PERCENT) k(RI) x RCR = 5									
k = 0.60	39	27	20	36	25	19	32	23	18	10
0.80	47	34	27	44	33	26	38	29	23	13
1.00	54	41	33	50	39	31	43	35	28	16
1.25	61	48	40	56	45	37	48	39	33	18
1.50	66	54	45	61	50	42	51	43	37	20
2.00	73	62	53	68	57	50	57	49	43	24
2.50	78	68	59	72	62	55	60	53	47	25
3.00	82	72	64	75	67	60	62	56	51	27
4.00	87	78	71	79	72	66	66	60	56	30
5.00	90	83	76	82	76	70	68	63	59	32
ROOM INDEX	UF(total)									Direct
According to DIN EN 13032-2 2004			Suspended				SHRNOM = 1.25			

C Range: 0 - 360DEG  
 C Interval: 22.5DEG  
 Test Speed: HIGH  
 Temperature:25.2°C  
 Operators:Dano  
 Test Date:2023-06-13

γ Range: 0 - 180DEG  
 γ Interval: 1.0DEG  
 Test System:EVERFINE GO-R5000\_V2 SYSTEM V2.00.459  
 Humidity:55.3%  
 Test Distance:2.900m [K=0.8810]  
 Remarks:

ISOCANDELA DIAGRAM

Test:U:120.0V I:0.3141A P:37.26W PF:0.9888 Freq:60.01Hz Lamp Flux:2378.95x1 lm		
NAME: PT07-44-40S-952C5-MVTD-BK 2700K	TYPE:	WEIGHT:
SPEC.:	DIM.:	SERIAL No.:
MFR.: FOSHAN LEDKEY LIGHTING CO.,LTD.	SUR.:	Shielding Angle:



C Range: 0 - 360DEG  
 C Interval: 22.5DEG  
 Test Speed: HIGH  
 Temperature:25.2°C  
 Operators:Dano  
 Test Date:2023-06-13

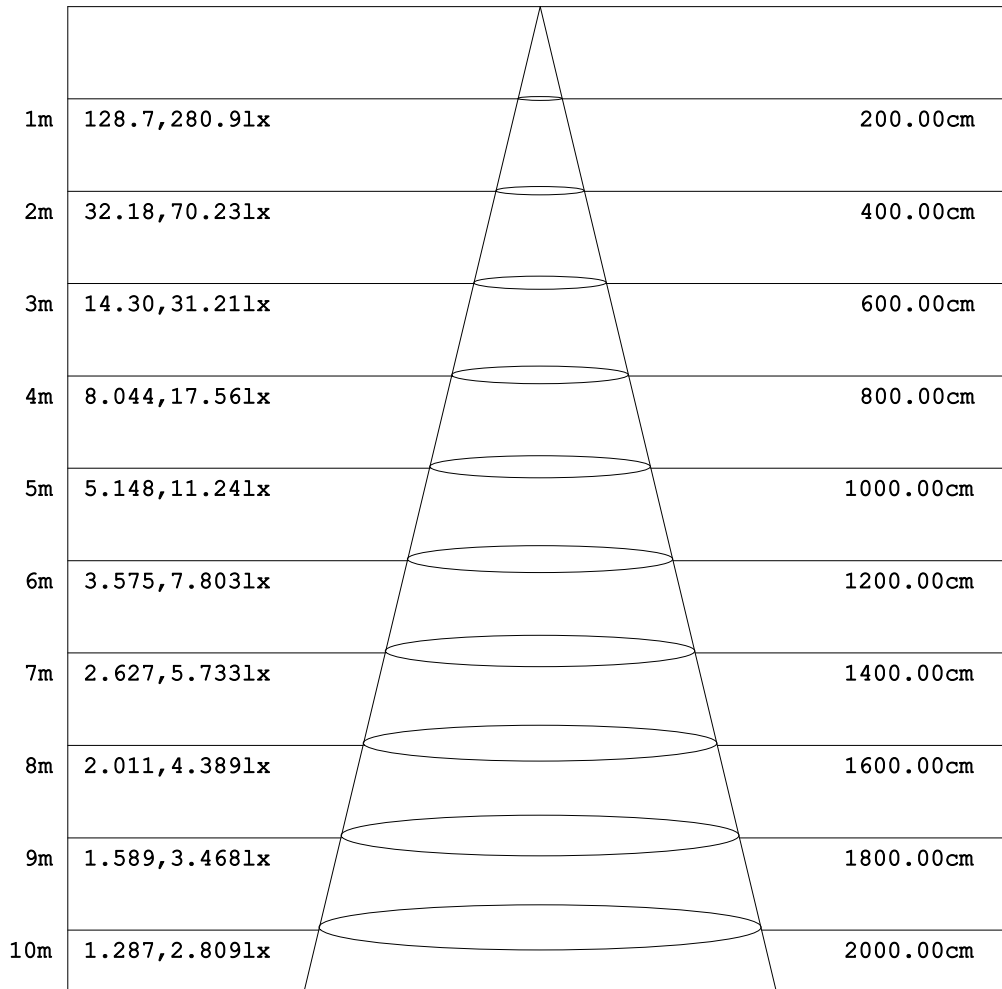
γ Range: 0 - 180DEG  
 γ Interval: 1.0DEG  
 Test System:EVERFINE GO-R5000\_V2 SYSTEM V2.00.459  
 Humidity:55.3%  
 Test Distance:2.900m [K=0.8810]  
 Remarks:



**AAI Figure**

Test:U:120.0V I:0.3141A P:37.26W PF:0.9888 Freq:60.01Hz Lamp Flux:2378.95x1 lm		
NAME: PT07-44-40S-952C5-MVTD-BK 2700K	TYPE:	WEIGHT:
SPEC.:	DIM.:	SERIAL No.:
MFR.: FOSHAN LEDKEY LIGHTING CO.,LTD.	SUR.:	Shielding Angle:

Flux out:404.3 lm



Height                      Eavg, Emax                      Angle:90.00deg                      Diameter

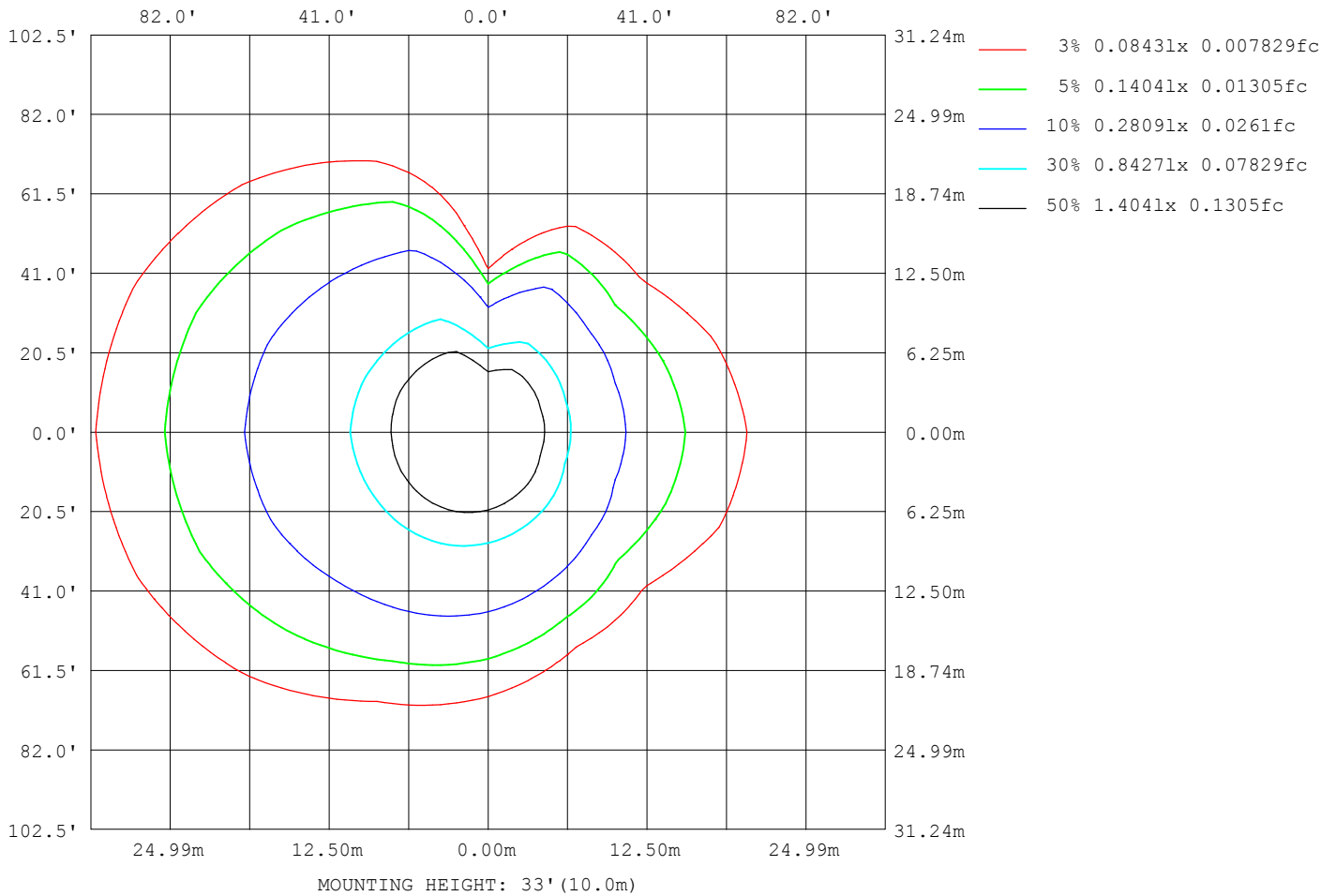
Note:The Curves indicate the illuminated area and the average illumination when the luminaire is at different distance.

C Range: 0 - 360DEG  
C Interval: 22.5DEG  
Test Speed: HIGH  
Temperature:25.2°C  
Operators:Dano  
Test Date:2023-06-13

γ Range: 0 - 180DEG  
γ Interval: 1.0DEG  
Test System:EVERFINE GO-R5000\_V2 SYSTEM V2.00.459  
Humidity:55.3%  
Test Distance:2.900m [K=0.8810]  
Remarks:

ISOLUX DIAGRAM

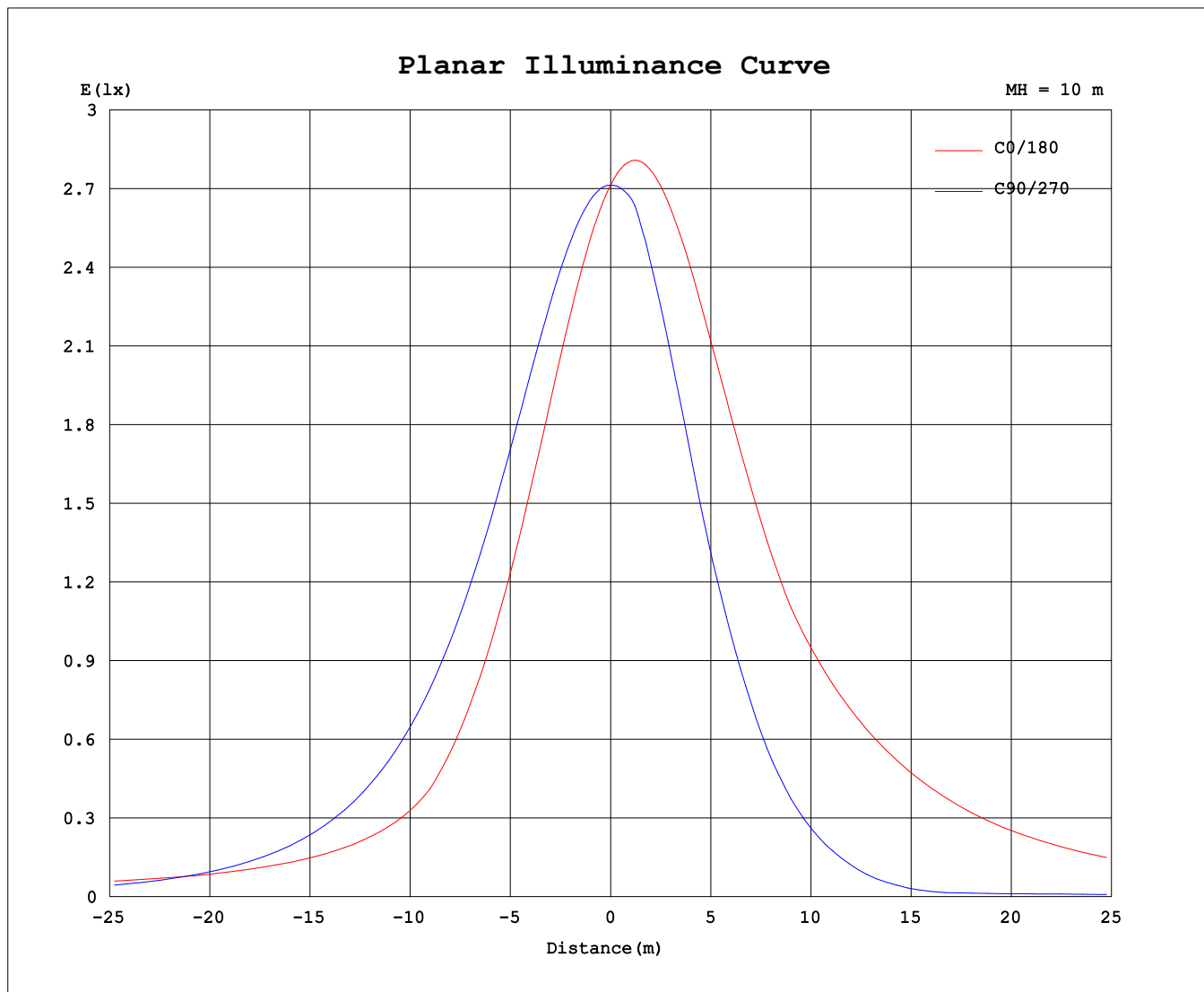
Test:U:120.0V I:0.3141A P:37.26W PF:0.9888 Freq:60.01Hz Lamp Flux:2378.95x1 lm		
NAME: PT07-44-40S-952C5-MVTD-BK 2700K	TYPE:	WEIGHT:
SPEC.:	DIM.:	SERIAL No.:
MFR.: FOSHAN LEDKEY LIGHTING CO.,LTD.	SUR.:	Shielding Angle:



C Range: 0 - 360DEG  
 C Interval: 22.5DEG  
 Test Speed: HIGH  
 Temperature:25.2°C  
 Operators:Dano  
 Test Date:2023-06-13

γ Range: 0 - 180DEG  
 γ Interval: 1.0DEG  
 Test System:EVERFINE GO-R5000\_V2 SYSTEM V2.00.459  
 Humidity:55.3%  
 Test Distance:2.900m [K=0.8810]  
 Remarks:

### Planar Illuminance Curve



C Range: 0 - 360DEG  
C Interval: 22.5DEG  
Test Speed: HIGH  
Temperature: 25.2°C  
Operators: Dano  
Test Date: 2023-06-13

γ Range: 0 - 180DEG  
γ Interval: 1.0DEG  
Test System: EVERFINE GO-R5000\_V2 SYSTEM V2.00.459  
Humidity: 55.3%  
Test Distance: 2.900m [K=0.8810]  
Remarks:

LUMINOUS DISTRIBUTION INTENSITY DATA

Test:U:120.0V I:0.3141A P:37.26W PF:0.9888 Freq:60.01Hz Lamp Flux:2378.95x1 lm		
NAME: PT07-44-40S-952C5-MVTD-BK 2700K	TYPE:	WEIGHT:
SPEC.:	DIM.:	SERIAL No.:
MFR.: FOSHAN LEDKEY LIGHTING CO.,LTD.	SUR.:	Shielding Angle:

Table--1

UNIT: cd

C (DEG) γ (DEG)	0	22.5	45	67.5	90	112.5	135	157.5	180	202.5	225	247.5	270	292.5	315	337.5			
0	271	271	271	271	271	271	271	271	271	271	271	271	271	271	271	271			
5	256	257	260	265	270	274	279	282	283	282	279	275	270	265	261	258			
10	240	240	248	256	266	276	284	290	291	291	284	270	260	257	248	242			
15	221	222	233	245	260	274	286	295	297	297	287	276	242	244	234	224			
20	201	202	217	233	252	270	286	296	299	300	287	272	219	230	217	204			
25	179	181	199	219	242	264	282	295	297	299	284	266	192	214	199	183			
30	157	158	180	203	230	255	276	289	292	295	278	260	164	197	179	161			
35	133	135	159	185	216	245	267	281	283	287	269	251	134	179	158	138			
40	109	112	138	167	200	232	255	270	272	276	257	237	103	159	136	114			
45	93.1	91.9	115	147	183	217	241	257	268	263	243	222	74.1	138	112	93.2			
50	87.4	84.4	92.7	126	164	200	224	255	271	262	226	205	47.6	118	87.9	84.5			
55	86.7	82.7	74.0	104	144	181	211	257	276	264	219	185	23.9	95.9	72.4	81.2			
60	90.8	86.1	66.3	81.2	122	160	206	260	280	267	214	163	13.0	71.6	64.4	82.9			
65	101	95.5	64.7	58.2	100	138	203	262	284	269	211	140	15.4	48.2	62.1	90.8			
70	125	118	69.3	38.8	76.6	118	201	264	286	270	208	122	18.5	32.8	67.3	112			
75	149	143	85.2	31.7	53.2	105	199	265	287	270	205	109	18.0	27.6	86.8	135			
80	172	166	108	34.1	31.1	95.5	197	264	286	269	201	98.9	14.4	35.1	108	157			
85	195	189	131	51.4	12.2	88.5	194	262	284	266	196	91.1	4.17	51.8	128	179			
90	216	211	153	71.3	0.85	84.8	190	259	281	262	191	87.2	0.75	69.2	147	199			
95	236	231	173	91.1	4.68	86.0	187	255	277	258	187	91.4	8.73	86.2	166	218			
100	254	249	192	110	22.6	99.3	188	253	274	254	189	108	28.3	103	182	235			
105	269	265	209	128	46.4	115	198	253	274	255	203	122	51.3	118	197	250			
110	282	277	224	143	72.0	129	211	265	284	266	215	135	76.2	131	210	263			
115	293	287	236	157	99.0	142	223	275	294	277	225	147	101	144	221	274			
120	300	295	245	169	126	152	231	283	300	284	232	158	126	143	230	281			
125	304	298	251	180	152	166	237	287	303	288	237	172	150	163	235	285			
130	305	298	253	192	176	184	239	288	303	289	239	188	173	182	238	286			
135	301	294	254	209	198	202	239	285	299	287	239	204	195	198	238	283			
140	295	287	252	224	218	218	241	279	291	281	242	221	215	212	227	276			
145	285	278	255	237	235	235	247	270	280	274	249	237	209	219	236	267			
150	277	277	261	245	238	247	257	269	274	272	259	251	200	203	242	260			
155	277	280	256	241	232	259	265	273	274	274	267	263	196	170	230	258			
160	279	279	254	224	221	259	275	278	278	279	275	271	210	171	187	238			
165	279	271	237	205	208	241	279	284	281	280	277	264	192	176	171	191			
170	272	216	206	207	201	205	264	287	277	279	264	246	207	200	186	182			
175	230	173	210	218	219	214	234	249	246	263	215	218	215	219	208	198			
180	87.6	179	210	226	232	229	213	197	112	72.5	181	211	226	231	227	213			

C Range: 0 - 360DEG  
 C Interval: 22.5DEG  
 Test Speed: HIGH  
 Temperature:25.2℃  
 Operators:Dano  
 Test Date:2023-06-13

γ Range: 0 - 180DEG  
 γ Interval: 1.0DEG  
 Test System:EVERFINE GO-R5000\_V2 SYSTEM V2.00.459  
 Humidity:55.3%  
 Test Distance:2.900m [K=0.8810]  
 Remarks: