
AFX

Client:

LumCAT: AUGW0612LAJMVNP

Luminaire: LED灯具

Report No:

Ballast type:

Test No:

Voltage(V): 120.000

LampCAT:

Current(A): 0.196

Lamp flux(lm): 2067.6

Power (W): 23.350

Number of Lamps: 1

PF: 0.993

Length(mm): 115

Width(mm): 50

Phm Type: C

Height(mm): 280

Photometric Results

Lumens(lm): 2067.55, Efficiency(%): 100.00% , Luminous Efficacy(lm/W): 88.55

Central intensity(cd): 53.443, Maximum intensity(cd): 438.991

Angle of maximum intensity: C=75.0 γ =90.0

Beam Angle(50%Imax): [C0/180]Total=309.4

[C90/270]Total=178.8

Field angle(10%Imax): [C0/180]Total=348.0

[C90/270]Total=192.7

Maximum s/h(1/2): C0_180=2.78 C90_270=4.57

Maximum s/h(1/4): C0_180=2.77 C90_270=4.30

Up flux rate of lamp(%): 48.73%

Down flux rate of lamp(%): 51.27%

Up flux rate of LUM(%): 48.73%

Down flux rate of LUM(%): 51.27%

CIE Type : General diffuse lighting

Output flux ratio in π solid angle : 21.349%

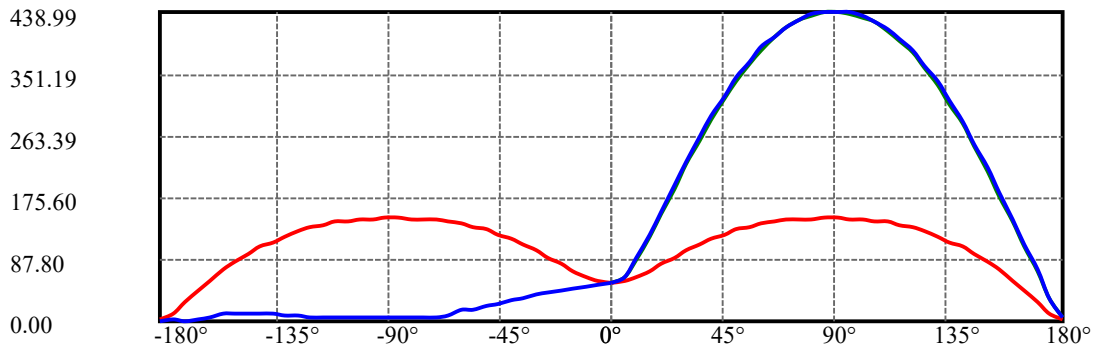
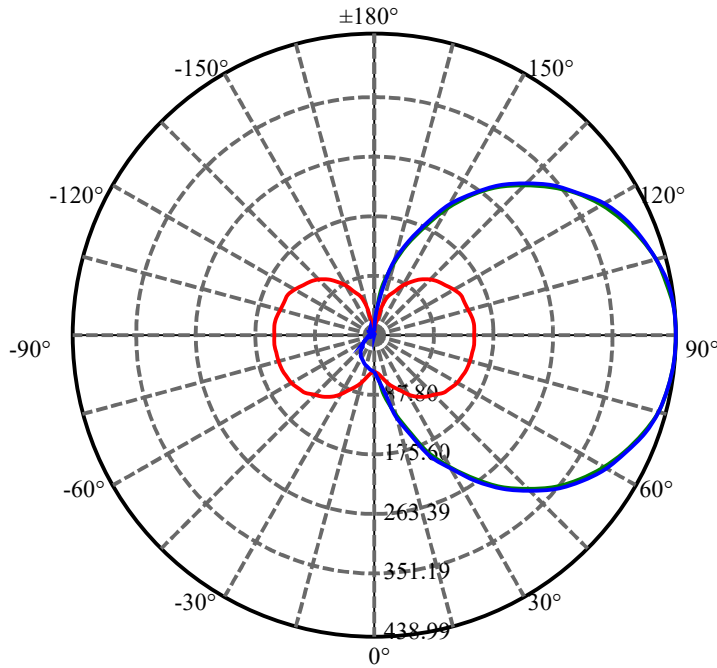
$\gamma(^{\circ})$	Average I(cd)	Zonal F(lm)	Sum F(lm)	Eff Flux(%)	Eff Sum(%)
0.0	53.443	0.000	0	0.00%	0.00%
5.0	56.214	1.311	1.311	0.06%	0.06%
10.0	65.489	4.354	5.665	0.21%	0.27%
15.0	78.017	8.513	14.177	0.41%	0.69%
20.0	92.284	14.035	28.212	0.68%	1.36%
25.0	106.079	20.805	49.017	1.01%	2.37%
30.0	120.139	28.628	77.645	1.38%	3.76%
35.0	133.598	37.365	115.01	1.81%	5.56%
40.0	146.089	46.664	161.673	2.26%	7.82%
45.0	157.299	56.175	217.848	2.72%	10.54%
50.0	167.423	65.615	283.463	3.17%	13.71%
55.0	176.237	74.723	358.186	3.61%	17.32%
60.0	183.816	83.225	441.411	4.03%	21.35%
65.0	189.512	90.757	532.168	4.39%	25.74%
70.0	194.354	97.198	629.365	4.70%	30.44%
75.0	198.257	102.622	731.988	4.96%	35.40%
80.0	201.185	106.879	838.867	5.17%	40.57%
85.0	203.100	109.854	948.721	5.31%	45.89%
90.0	203.400	111.303	1060.024	5.38%	51.27%
95.0	202.426	111.118	1171.142	5.37%	56.64%
100.0	200.177	109.397	1280.539	5.29%	61.94%
105.0	196.612	106.170	1386.709	5.14%	67.07%
110.0	191.850	101.537	1488.246	4.91%	71.98%
115.0	185.731	95.606	1583.852	4.62%	76.61%
120.0	177.934	88.408	1672.26	4.28%	80.88%
125.0	168.563	80.092	1752.352	3.87%	84.76%
130.0	157.916	70.987	1823.339	3.43%	88.19%
135.0	145.882	61.387	1884.726	2.97%	91.16%
140.0	132.719	51.585	1936.311	2.50%	93.65%
145.0	118.134	41.853	1978.165	2.02%	95.68%
150.0	102.608	32.506	2010.67	1.57%	97.25%
155.0	86.415	23.921	2034.591	1.16%	98.41%
160.0	68.995	16.300	2050.891	0.79%	99.19%
165.0	50.602	9.856	2060.747	0.48%	99.67%
170.0	32.326	4.919	2065.667	0.24%	99.91%
175.0	14.521	1.676	2067.343	0.08%	99.99%
180.0	2.699	0.206	2067.548	0.01%	100.00%

ZONAL LUMEN SUMMARY

Zone	Lumens	%Lamp	%Fixt
0-30	77.65	3.76%	3.76%
0-40	161.67	7.82%	7.82%
0-60	441.41	21.35%	21.35%
0-90	1060.02	51.27%	51.27%
0-120	1672.26	80.88%	80.88%
0-180	2067.55	100.00%	100.00%
60-90	618.61	29.92%	29.92%
90-120	612.24	29.61%	29.61%
90-130	763.32	36.92%	36.92%
90-150	950.65	45.98%	45.98%
90-180	1007.32	48.72%	48.72%
0-118.97	1654.04	80.00%	80.00%

ZONAL LUMEN SUMMARY

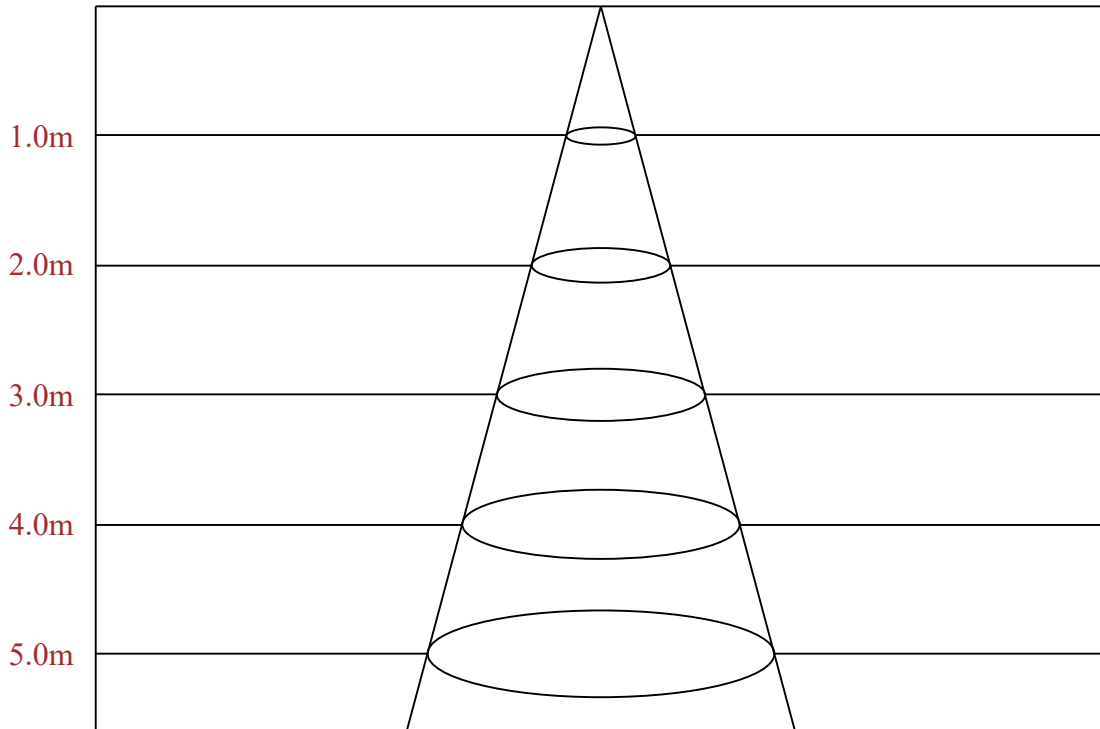
0-10	5.66
10-20	22.55
20-30	49.43
30-40	84.03
40-50	121.79
50-60	157.95
60-70	187.95
70-80	209.50
80-90	221.16
90-100	220.52
100-110	207.71
110-120	184.01
120-130	151.08
130-140	112.97
140-150	74.36
150-160	40.22
160-170	14.78
170-180	1.68



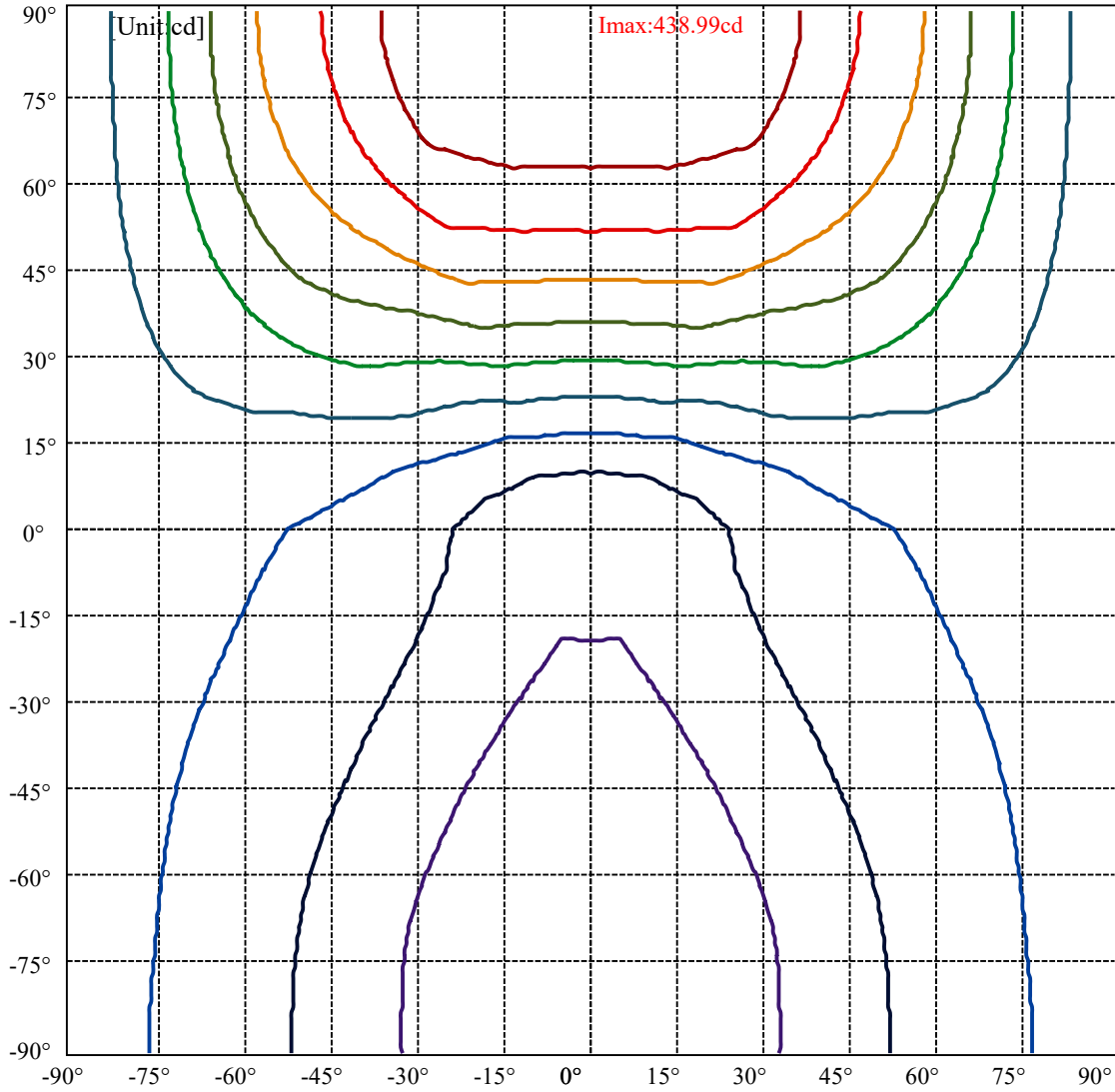
C75(Max): ———
 C0/C180: ———
 C90/C270: ———

Field angle(10%Imax):C0/180Left:174.0 Right:174.0
 :C90/270Left:19.0 Right:173.7

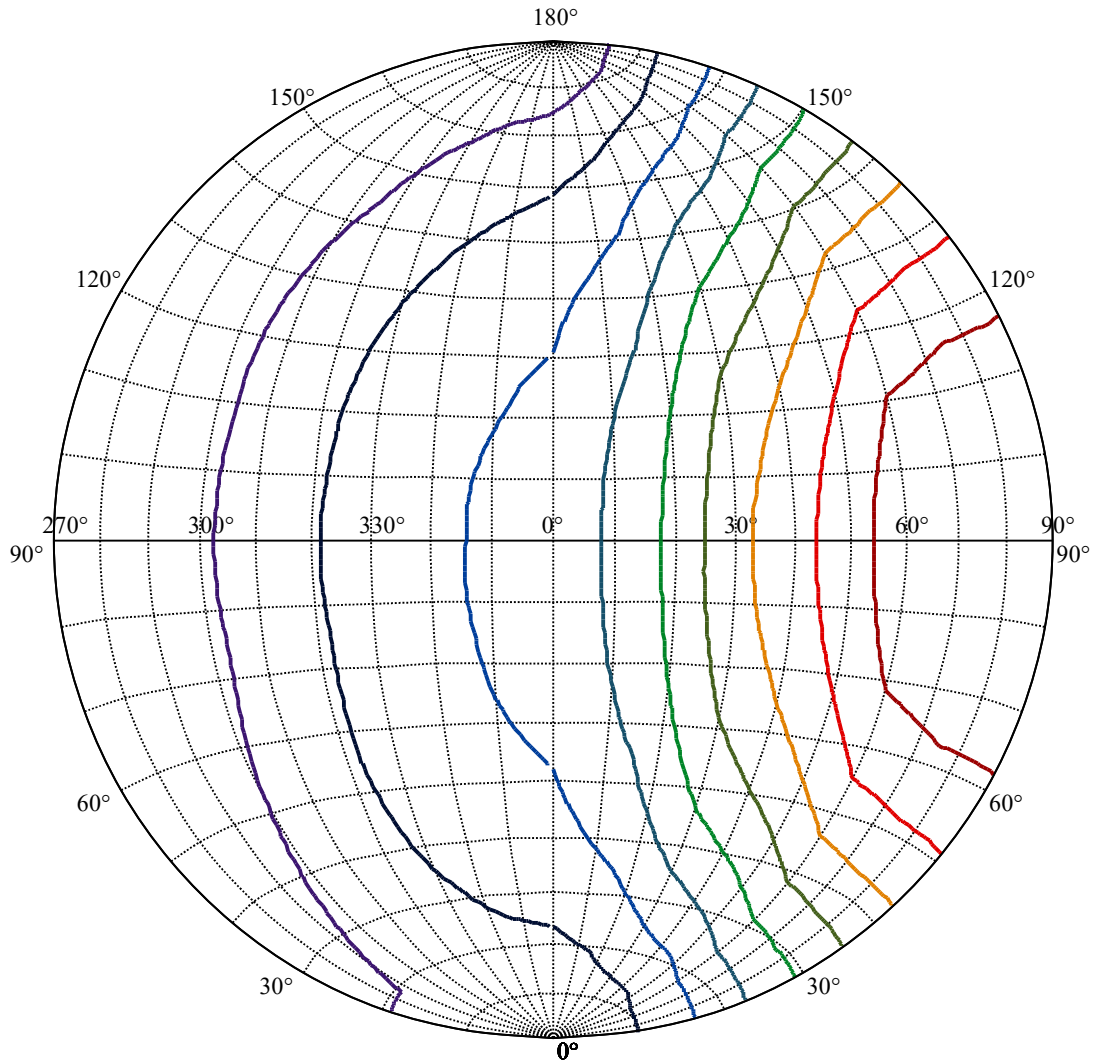
Beam Angle(50%Imax):C0/180Left:154.7 Right:154.7
 :C90/270Left:28.9 Right:149.9



Max , Ave Beam angle of C75 plane 221.58



- (10%Imax) 43.8991
- (20%Imax) 87.7982
- (30%Imax) 131.697
- (40%Imax) 175.596
- (50%Imax) 219.496
- (60%Imax) 263.395
- (70%Imax) 307.294
- (80%Imax) 351.193
- (90%Imax) 395.092



House

[Unit:cd]

Road

I_{max}:438.99

(10%I_{max}) 43.8991

(20%I_{max}) 87.7982

(30%I_{max}) 131.697

(40%I_{max}) 175.596

(50%I_{max}) 219.496

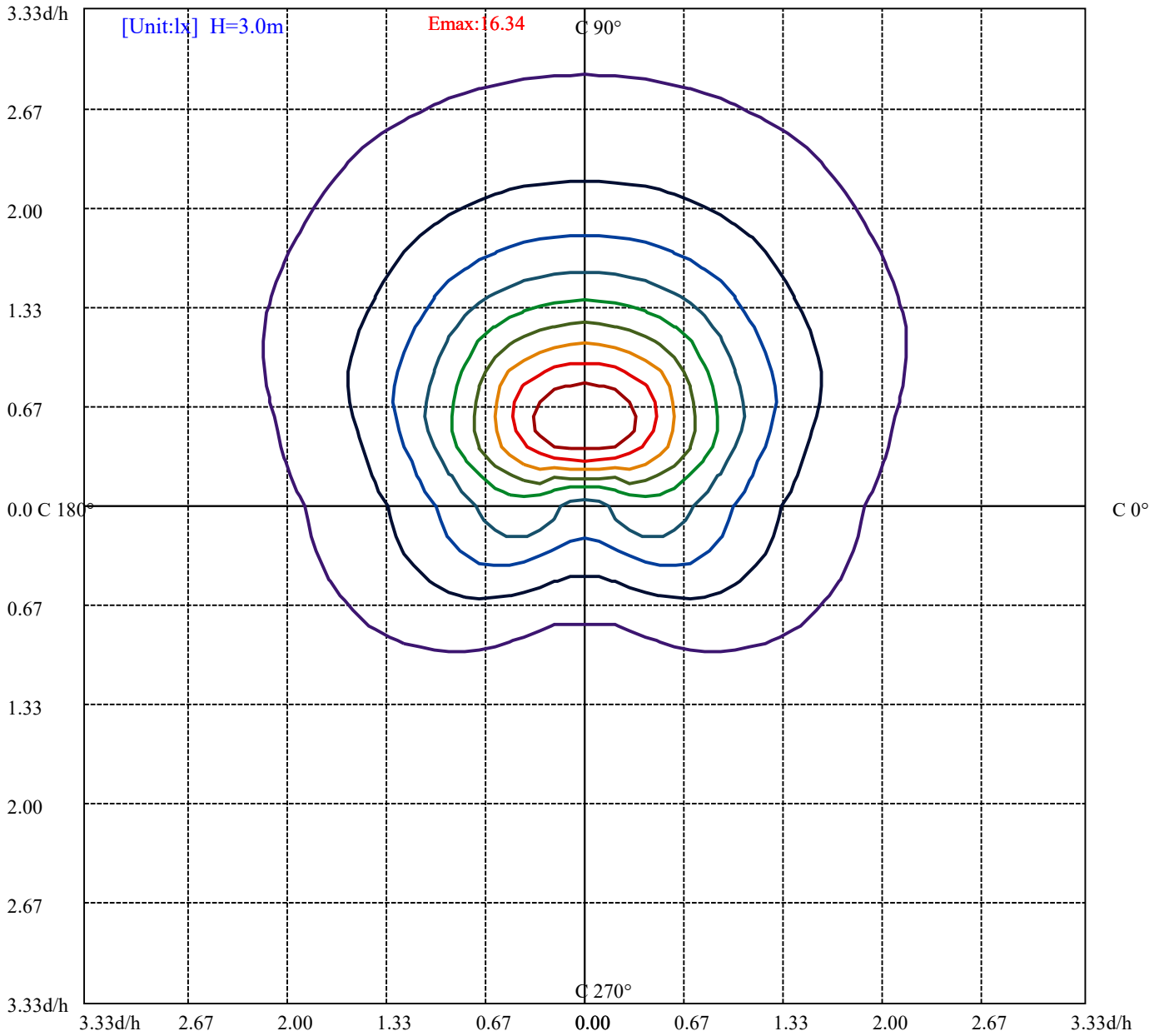
(60%I_{max}) 263.395

(70%I_{max}) 307.294

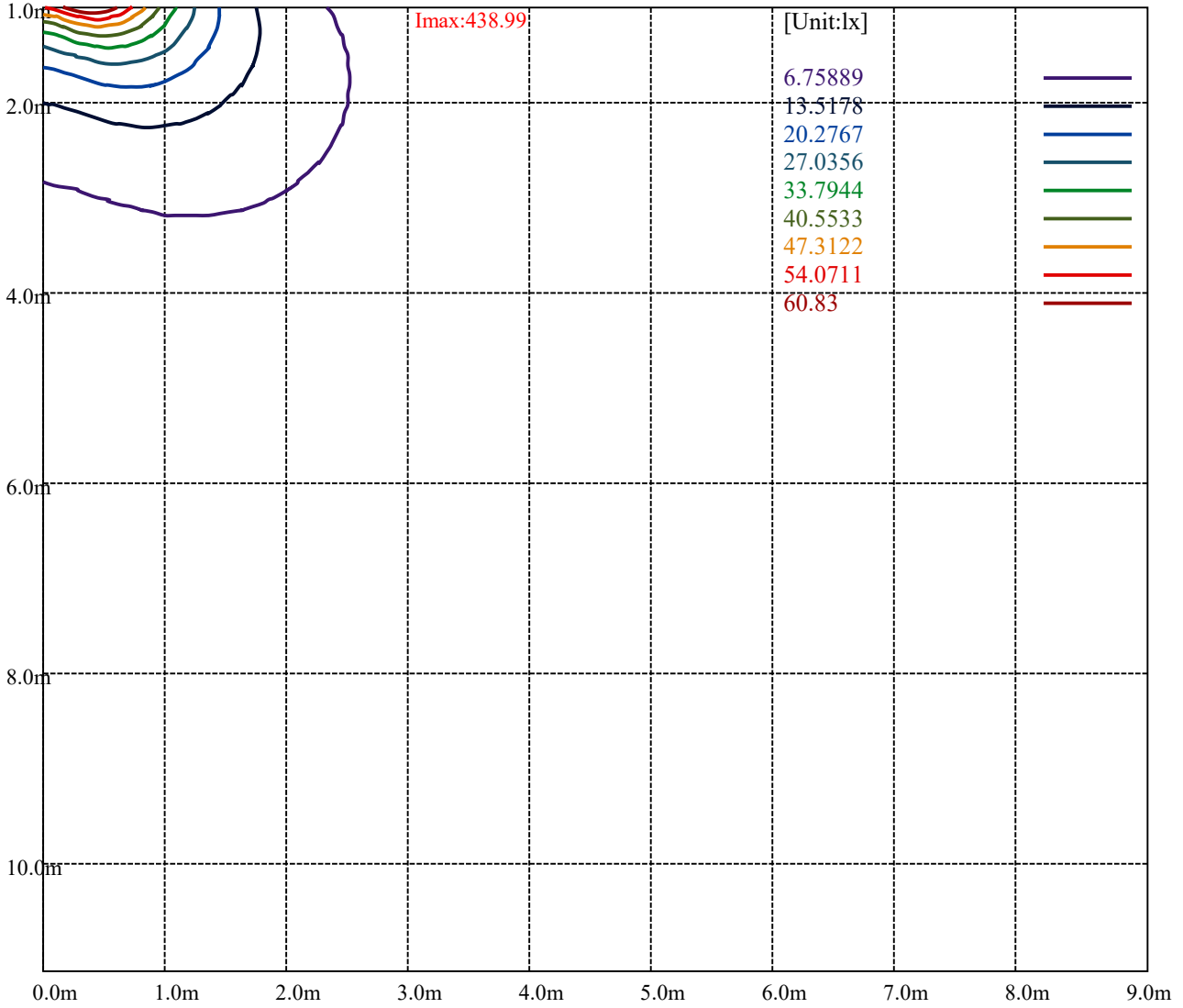
(80%I_{max}) 351.193

(90%I_{max}) 395.092





- (10%Emax) 1.634
- (20%Emax) 3.268011
- (30%Emax) 4.902011
- (40%Emax) 6.536022
- (50%Emax) 8.170022
- (60%Emax) 9.804022
- (70%Emax) 11.438
- (80%Emax) 13.072
- (90%Emax) 14.706



Luminance Table

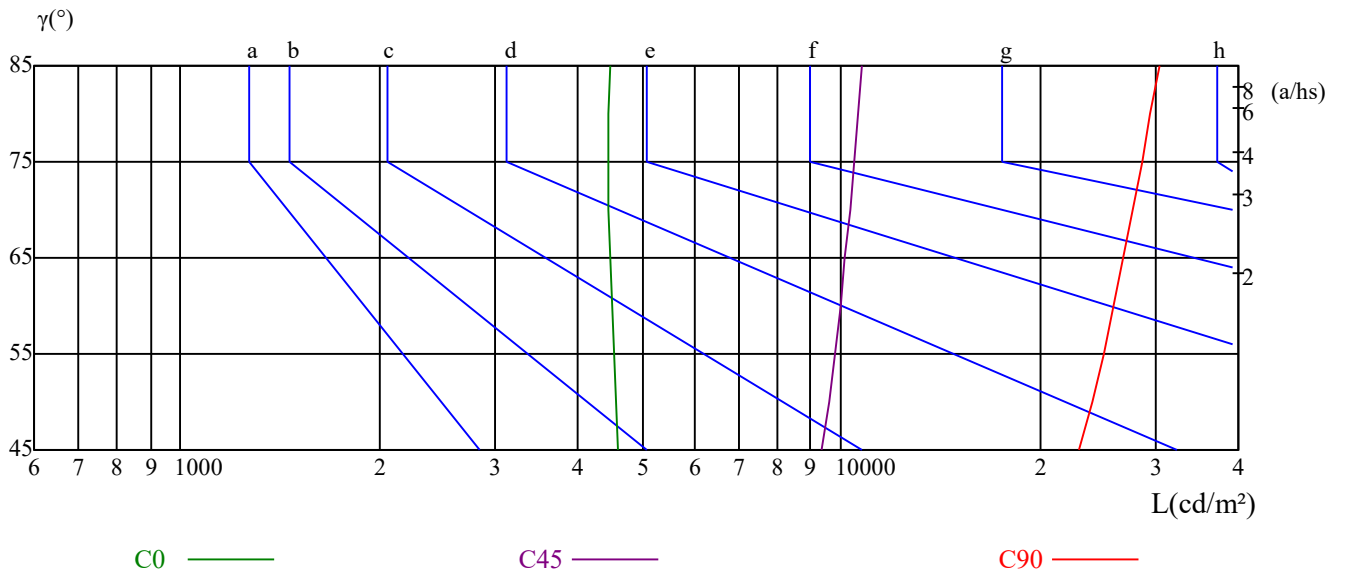
γ	45	50	55	60	65	70	75	80	85
C0	4610	4574	4531	4498	4472	4454	4443	4454	4485
C45	9332	9585	9812	9995	10159	10312	10457	10601	10747
C90	22895	24025	24961	25924	26756	27663	28543	29414	30357

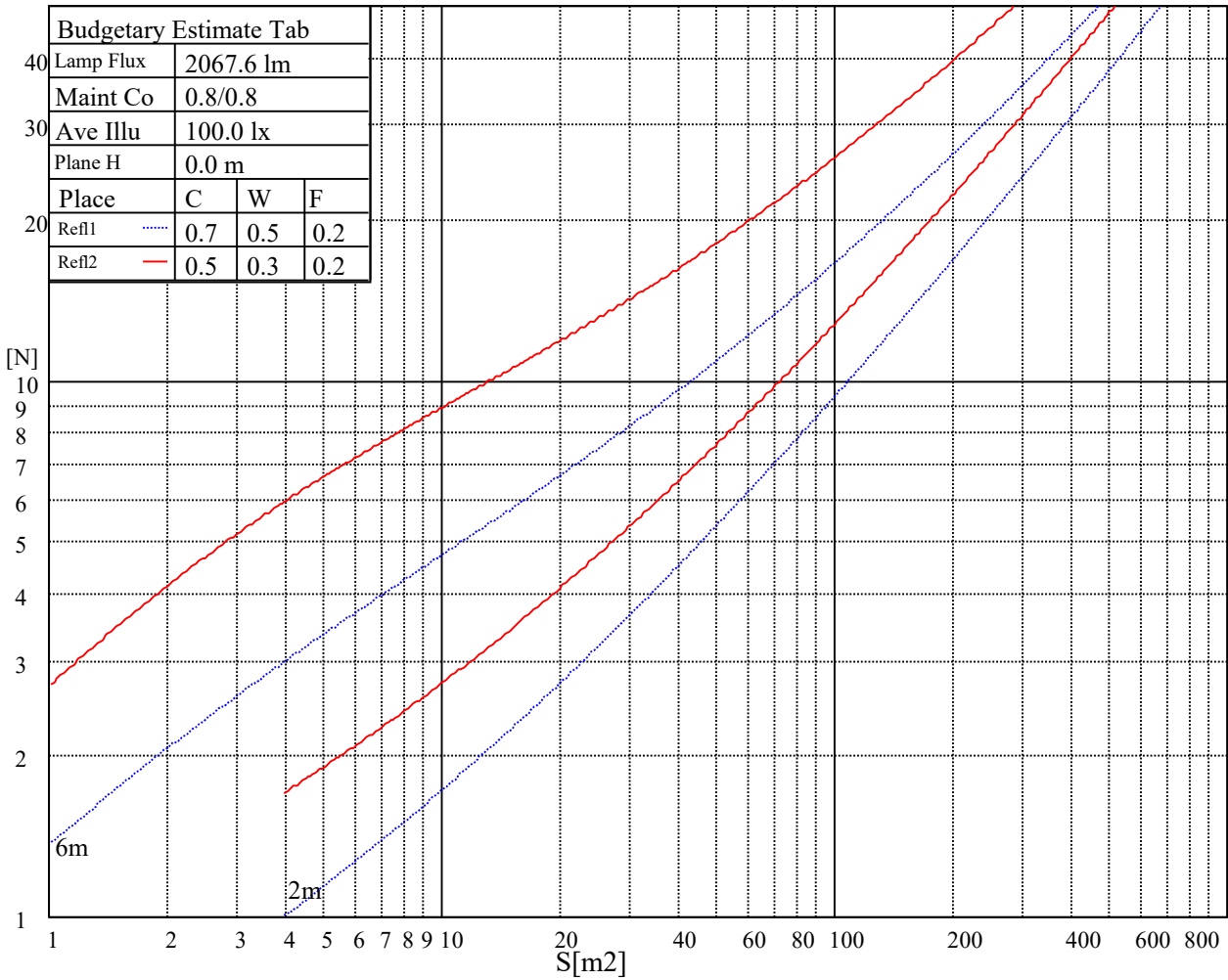
L(Hor)(65)	L(Ver)(65)	L45(65)	L(Hor)(75)	L(Ver)(75)	L45(75)	L(Hor)(85)	L(Ver)(85)	L45(85)
58174	85126	81525	97307	145501	139847	291544	442195	426580

Glare Table

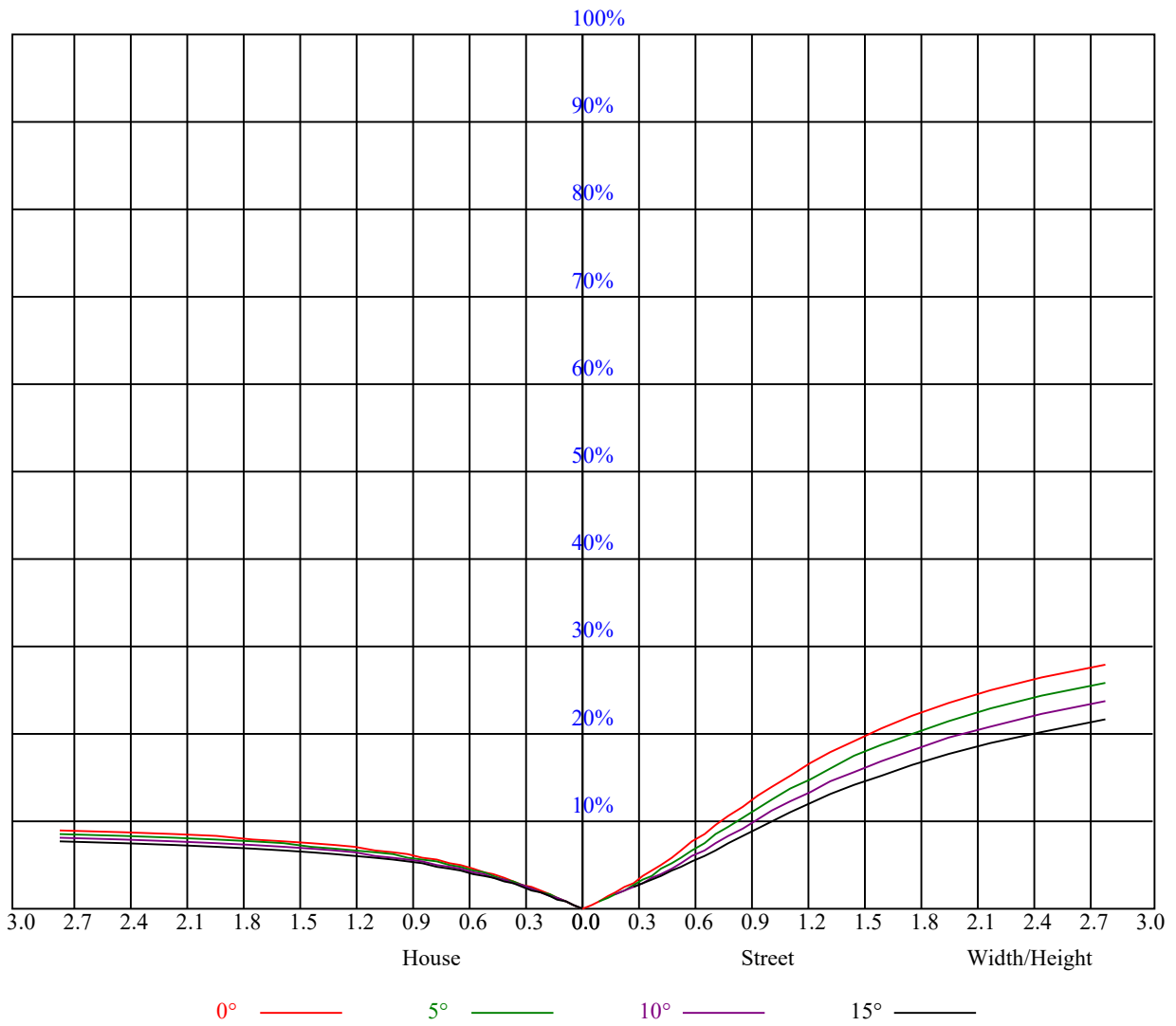
Glare	Quality	Service Values Illuminance(lx)							
1.15	A	2000	1000	500	<=300				
1.5	B		2000	1000	500	<=300			
1.85	C			2000	1000	500	<=300		
2.2	D				2000	1000	500	<=300	
2.55	E					2000	1000	500	<=300
		a	b	c	d	e	f	g	h

Luminance Limiting Curve





RHOCC	80			70			50			30			10			0
RHOW	50	30	10	50	30	10	50	30	10	50	30	10	50	30	10	0
RCR	COEFFICIENTS OF UTILIZATION RHOFC=20 CU															
0	1.07	1.07	1.07	0.99	0.99	0.99	0.84	0.84	0.84	0.70	0.70	0.70	0.57	0.57	0.57	0.51
1	0.86	0.80	0.75	0.79	0.74	0.69	0.66	0.61	0.58	0.53	0.50	0.47	0.42	0.40	0.38	0.32
2	0.72	0.64	0.57	0.66	0.59	0.52	0.54	0.49	0.44	0.44	0.39	0.35	0.34	0.31	0.28	0.23
3	0.62	0.52	0.45	0.56	0.48	0.41	0.46	0.40	0.34	0.37	0.32	0.28	0.28	0.25	0.21	0.17
4	0.53	0.44	0.36	0.49	0.40	0.33	0.40	0.33	0.28	0.32	0.27	0.22	0.24	0.20	0.17	0.13
5	0.47	0.37	0.30	0.43	0.34	0.28	0.35	0.28	0.23	0.28	0.23	0.18	0.21	0.17	0.14	0.10
6	0.42	0.32	0.25	0.38	0.29	0.23	0.31	0.24	0.19	0.25	0.20	0.15	0.19	0.15	0.11	0.08
7	0.37	0.28	0.22	0.34	0.26	0.20	0.28	0.21	0.16	0.22	0.17	0.13	0.17	0.13	0.10	0.07
8	0.33	0.25	0.19	0.31	0.23	0.17	0.25	0.19	0.14	0.20	0.15	0.11	0.16	0.11	0.08	0.06
9	0.30	0.22	0.16	0.28	0.20	0.15	0.23	0.17	0.12	0.18	0.13	0.10	0.14	0.10	0.07	0.05
10	0.28	0.20	0.14	0.25	0.18	0.13	0.21	0.15	0.11	0.17	0.12	0.09	0.13	0.09	0.06	0.04



Intensity data(cd)

C/ γ (°)	0.0	5.0	10.0	15.0	20.0	25.0	30.0	35.0	40.0
0.0	53.44	52.58	56.89	64.65	74.99	85.34	95.68	106.02	114.64
15.0	53.44	54.32	60.45	73.59	87.61	102.51	117.40	133.17	146.31
30.0	53.44	56.12	67.69	86.40	107.78	129.15	152.31	175.47	197.74
45.0	53.44	57.97	75.18	99.64	127.72	157.61	187.50	216.49	242.76
60.0	53.44	60.69	81.52	110.51	141.31	176.63	209.24	241.85	271.74
75.0	53.44	61.60	86.96	115.94	150.36	185.69	220.11	253.63	282.61
90.0	53.44	63.58	89.38	121.63	155.72	193.50	226.67	260.76	291.17
105.0	53.44	63.58	88.46	121.63	154.80	190.74	226.67	259.84	291.17
120.0	53.44	62.66	85.69	114.26	146.51	178.76	212.85	244.18	274.59
135.0	53.44	55.95	72.65	94.36	117.74	142.79	168.68	193.73	217.11
150.0	53.44	60.81	74.64	91.22	126.24	131.76	151.11	171.39	190.74
165.0	53.44	58.97	69.11	80.16	93.99	106.89	118.86	130.84	143.74
180.0	53.44	59.48	68.10	77.58	87.06	95.68	105.16	112.06	118.95
195.0	53.44	58.70	64.83	72.72	80.60	88.49	95.50	101.63	106.89
210.0	53.44	57.01	61.46	67.69	72.15	78.38	82.84	87.29	90.85
225.0	53.44	55.25	57.07	60.69	62.50	65.22	67.03	68.84	69.75
240.0	53.44	52.54	52.54	52.54	51.63	50.73	49.82	48.01	46.20
255.0	53.44	50.73	48.91	47.10	43.48	40.76	37.14	32.61	28.99
270.0	53.44	50.68	47.91	46.07	43.31	39.62	36.86	33.17	29.49
285.0	53.44	50.68	48.84	46.07	43.31	40.54	37.78	34.09	33.17
300.0	53.44	51.60	49.76	48.84	48.84	48.84	48.84	48.84	47.91
315.0	53.44	46.76	47.60	50.10	53.44	55.95	59.29	62.63	65.97
330.0	53.44	52.52	56.21	61.74	68.19	75.56	82.01	87.54	93.99
345.0	53.44	54.36	59.89	67.26	75.56	84.77	93.99	102.28	109.65
360.0	53.44	52.58	56.89	64.65	74.99	85.34	95.68	106.02	114.64
C/ γ (°)	45.0	50.0	55.0	60.0	65.0	70.0	75.0	80.0	85.0
0.0	122.40	129.30	135.33	139.64	143.95	146.54	148.26	149.99	150.85
15.0	159.45	171.72	182.23	191.87	198.88	205.89	210.27	212.90	215.52
30.0	218.23	236.93	252.96	267.21	279.68	289.48	297.50	302.84	306.41
45.0	269.03	292.58	314.32	332.43	347.83	360.51	369.57	375.91	380.44
60.0	299.82	326.09	349.64	369.57	385.88	400.37	411.24	418.49	423.01
75.0	313.41	336.96	360.51	381.35	398.56	412.14	423.01	430.26	434.79
90.0	319.74	346.46	368.57	388.84	404.51	418.33	428.47	434.92	438.60
105.0	319.74	346.46	369.49	389.76	406.35	421.09	431.23	437.68	441.37
120.0	302.23	327.11	349.22	367.65	384.24	397.14	407.27	413.72	418.33
135.0	237.99	258.03	275.57	290.60	303.12	313.14	321.49	327.34	329.84
150.0	209.16	224.83	239.57	251.55	261.69	269.98	277.35	281.96	284.72
165.0	152.04	161.25	169.54	175.99	180.60	185.21	187.97	189.81	191.66
180.0	124.99	130.16	133.61	137.06	138.78	140.50	141.37	141.37	141.37
195.0	111.27	115.65	118.28	120.90	122.66	123.53	124.41	125.28	125.28
210.0	94.42	96.20	97.98	98.87	99.76	99.76	99.76	100.65	101.54
225.0	70.65	70.65	70.65	69.75	68.84	67.94	67.94	68.84	68.84
240.0	43.48	41.67	38.95	36.23	33.52	30.80	29.89	30.80	30.80
255.0	24.46	20.83	16.30	12.68	9.06	5.43	4.53	4.53	5.43
270.0	24.88	21.19	16.59	16.59	9.21	5.53	4.61	4.61	4.61
285.0	26.72	22.11	18.43	14.74	11.06	8.29	6.45	7.37	7.37
300.0	47.91	46.99	46.99	46.07	44.23	43.31	43.31	44.23	45.15
315.0	68.47	70.14	71.81	72.65	72.65	72.65	73.48	74.32	75.99
330.0	98.59	103.20	106.89	109.65	110.57	112.41	113.34	114.26	115.18
345.0	116.10	121.63	126.24	129.92	132.69	134.53	135.45	136.37	137.29
360.0	122.40	129.30	135.33	139.64	143.95	146.54	148.26	149.99	150.85

Intensity data(cd)

C/γ(°)	90.0	95.0	100.0	105.0	110.0	115.0	120.0	125.0	130.0
0.0	150.85	149.99	149.99	148.26	146.54	143.95	139.64	135.33	129.30
15.0	216.40	214.65	212.90	208.52	203.26	197.13	189.24	179.60	169.09
30.0	307.30	306.41	301.95	296.61	288.59	278.79	265.43	251.18	234.26
45.0	382.25	380.44	376.82	369.57	359.61	346.93	331.53	312.51	291.67
60.0	424.83	423.01	417.58	410.33	401.28	385.88	370.48	347.83	326.09
75.0	435.70	433.88	429.36	422.11	411.24	398.56	381.35	360.51	336.06
90.0	438.60	437.68	433.07	425.70	414.64	400.82	383.31	363.04	340.01
105.0	442.29	439.52	434.92	426.62	413.72	398.98	380.55	359.36	334.48
120.0	417.41	416.49	411.88	403.59	392.53	377.79	359.36	339.09	315.13
135.0	330.68	328.17	324.00	317.32	308.13	297.28	283.08	265.54	246.34
150.0	284.72	282.88	278.27	272.74	265.37	254.31	242.34	227.59	211.01
165.0	190.74	189.81	187.05	184.29	179.68	173.23	165.86	157.56	147.43
180.0	141.37	140.50	139.64	137.92	134.47	131.02	125.85	119.82	112.92
195.0	124.41	124.41	122.66	120.90	117.40	114.77	109.51	104.26	98.12
210.0	100.65	99.76	98.87	96.20	94.42	90.85	86.40	81.95	76.60
225.0	68.84	67.94	66.12	64.31	62.50	60.69	59.78	54.35	49.82
240.0	30.80	28.99	28.99	27.17	26.27	25.36	24.46	23.55	22.65
255.0	5.43	5.43	4.53	4.53	5.43	6.34	7.25	9.06	9.96
270.0	4.61	4.61	4.61	4.61	5.53	6.45	6.45	7.37	9.21
285.0	8.29	8.29	8.29	8.29	9.21	11.06	11.98	12.90	13.82
300.0	46.07	46.07	46.07	45.15	45.15	45.15	44.23	43.31	41.46
315.0	75.99	76.82	75.15	75.15	74.32	72.65	70.14	66.80	62.63
330.0	116.10	115.18	114.26	113.34	111.49	108.73	105.04	100.44	94.91
345.0	137.29	137.29	137.29	135.45	133.61	130.84	127.16	122.55	117.02
360.0	150.85	149.99	149.99	148.26	146.54	143.95	139.64	135.33	129.30

C/γ(°)	135.0	140.0	145.0	150.0	155.0	160.0	165.0	170.0	175.0
0.0	121.54	113.78	104.30	93.96	81.89	68.10	50.86	36.20	18.96
15.0	155.95	143.68	129.66	113.89	98.12	82.35	63.08	42.05	21.03
30.0	215.55	195.07	174.58	148.75	126.48	102.43	79.27	50.77	24.94
45.0	269.03	242.76	214.68	185.69	154.89	125.91	94.20	61.60	29.89
60.0	299.82	270.84	240.04	208.34	174.82	138.59	105.07	70.65	30.80
75.0	309.79	281.71	250.00	215.58	180.26	144.93	109.60	72.47	32.61
90.0	312.36	283.80	251.55	218.38	182.44	144.66	108.73	74.64	33.17
105.0	306.84	278.27	245.10	210.09	174.15	137.29	105.04	70.03	31.33
120.0	288.41	258.92	228.51	194.42	161.25	127.16	93.99	60.81	29.49
135.0	225.46	201.25	177.03	151.14	124.42	99.37	73.48	46.76	20.04
150.0	192.58	172.31	152.96	130.84	109.65	86.61	63.58	40.54	16.59
165.0	136.37	124.39	111.49	97.67	82.93	68.19	48.84	32.25	11.98
180.0	104.30	96.54	87.06	75.85	62.92	48.27	34.48	17.24	4.31
195.0	91.12	82.35	74.47	63.96	53.44	49.94	28.04	13.14	2.63
210.0	70.37	67.69	55.22	48.10	40.08	32.07	19.60	8.91	1.78
225.0	46.20	41.67	36.23	31.70	28.08	20.83	11.78	4.53	0.91
240.0	21.74	20.83	19.02	17.21	14.49	9.96	4.53	0.91	0.91
255.0	11.78	11.78	10.87	10.87	9.06	4.53	0.91	0.91	0.91
270.0	11.06	11.06	11.06	11.98	10.14	4.61	1.84	0.92	1.84
285.0	14.74	13.82	13.82	14.74	13.82	11.06	6.45	3.69	2.76
300.0	38.70	35.01	32.25	29.49	26.72	20.27	14.74	8.29	4.61
315.0	58.45	53.44	47.60	43.42	36.74	29.23	21.71	13.36	5.85
330.0	89.38	82.93	75.56	65.42	57.13	44.23	33.17	20.27	9.21
345.0	109.65	101.36	92.14	81.09	70.03	55.29	41.46	24.88	11.98
360.0	121.54	113.78	104.30	93.96	81.89	68.10	50.86	36.20	18.96

Intensity data(cd)

C/γ(°)	180.0
0.0	3.45
15.0	5.26
30.0	6.24
45.0	5.43
60.0	6.34
75.0	6.34
90.0	6.45
105.0	6.45
120.0	6.45
135.0	5.01
150.0	4.61
165.0	2.76
180.0	0.00
195.0	0.00
210.0	0.00
225.0	0.00
240.0	0.00
255.0	0.00
270.0	0.00
285.0	0.00
300.0	0.00
315.0	0.00
330.0	0.00
345.0	0.00
360.0	3.45