

---

乐达凯

---

Client:

LumCAT: AUGW0612LAJMVBK

Luminaire: LED 灯具

Report No:

Ballast type:

Test No:

Voltage(V): 120.030

LampCAT:

Current(A): 0.194

Lamp flux(lm): 2050.0

Power (W): 23.050

Number of Lamps: 1

PF: 0.992

Length(mm): 110

Width(mm): 50

Phm Type: C

Height(mm): 270

---

Photometric Results

---

Lumens(lm): 2049.96, Efficiency(%): 100.00% , Luminous Efficacy(lm/W): 88.94

Central intensity(cd): 50.299, Maximum intensity(cd): 436.526

Angle of maximum intensity: C=75.0  $\gamma$ =90.0

Beam Angle(50%Imax): [C0/180]Total=308.6

[C90/270]Total=119.6

Field angle(10%Imax): [C0/180]Total=347.2

[C90/270]Total=187.1

Maximum s/h(1/2): C0\_180=2.91 C90\_270=4.74

Maximum s/h(1/4): C0\_180=2.88 C90\_270=4.45

Up flux rate of lamp(%): 49.14%

Down flux rate of lamp(%): 50.86%

Up flux rate of LUM(%): 49.14%

Down flux rate of LUM(%): 50.86%

CIE Type : General diffuse lighting

Output flux ratio in  $\pi$  solid angle : 20.867%

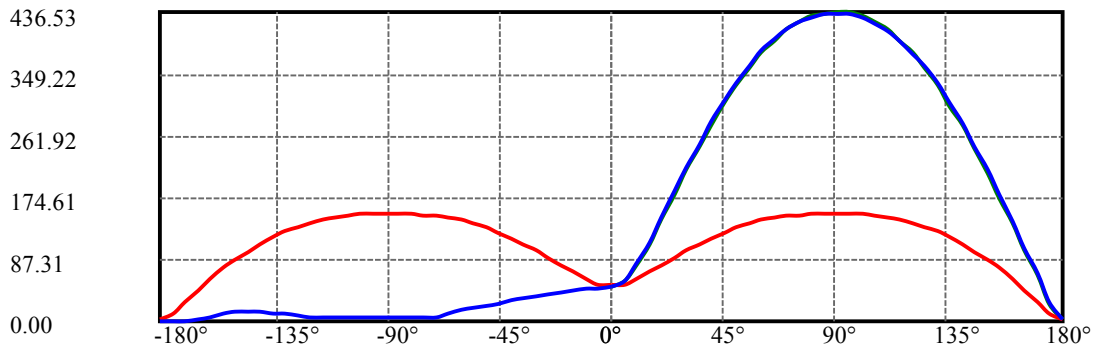
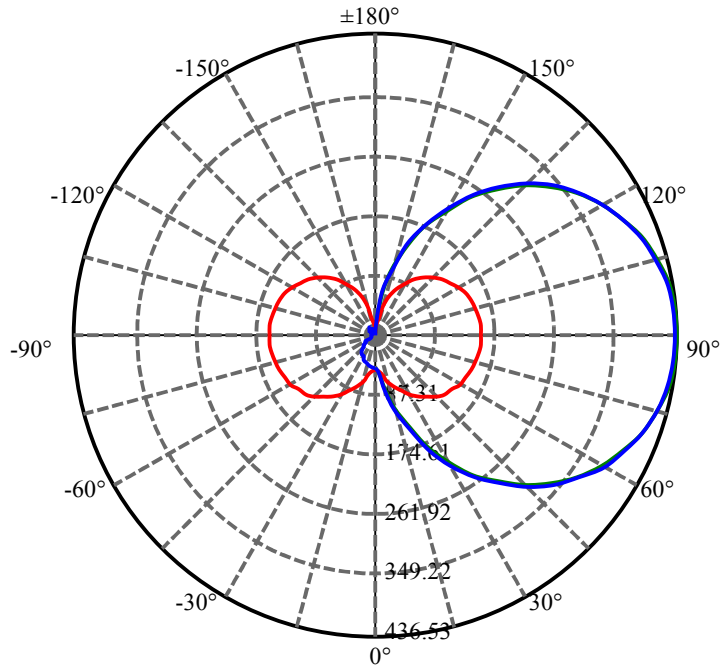
$\gamma(^{\circ})$	Average I(cd)	Zonal F(lm)	Sum F(lm)	Eff Flux(%)	Eff Sum(%)
0.0	49.251	0.000	0	0.00%	0.00%
5.0	51.235	1.201	1.201	0.06%	0.06%
10.0	60.179	3.986	5.187	0.19%	0.25%
15.0	72.305	7.859	13.046	0.38%	0.64%
20.0	86.676	13.102	26.148	0.64%	1.28%
25.0	100.599	19.642	45.79	0.96%	2.23%
30.0	114.783	27.257	73.046	1.33%	3.56%
35.0	128.555	35.833	108.88	1.75%	5.31%
40.0	141.392	45.039	153.918	2.20%	7.51%
45.0	153.368	54.577	208.495	2.66%	10.17%
50.0	163.884	64.105	272.601	3.13%	13.30%
55.0	173.091	73.270	345.87	3.57%	16.87%
60.0	181.212	81.896	427.766	4.00%	20.87%
65.0	187.574	89.653	517.419	4.37%	25.24%
70.0	192.926	96.345	613.764	4.70%	29.94%
75.0	196.781	101.863	715.627	4.97%	34.91%
80.0	200.299	106.247	821.875	5.18%	40.09%
85.0	202.619	109.482	931.357	5.34%	45.43%
90.0	203.517	111.203	1042.561	5.42%	50.86%
95.0	202.469	111.162	1153.723	5.42%	56.28%
100.0	200.261	109.432	1263.155	5.34%	61.62%
105.0	196.706	106.217	1369.372	5.18%	66.80%
110.0	191.916	101.579	1470.951	4.96%	71.76%
115.0	185.703	95.615	1566.567	4.66%	76.42%
120.0	178.106	88.443	1655.01	4.31%	80.73%
125.0	168.899	80.209	1735.219	3.91%	84.65%
130.0	158.196	71.121	1806.34	3.47%	88.12%
135.0	146.182	61.504	1867.844	3.00%	91.12%
140.0	132.859	51.667	1919.511	2.52%	93.64%
145.0	118.113	41.873	1961.384	2.04%	95.68%
150.0	102.507	32.488	1993.872	1.58%	97.26%
155.0	86.078	23.866	2017.737	1.16%	98.43%
160.0	68.450	16.207	2033.944	0.79%	99.22%
165.0	49.139	9.691	2043.635	0.47%	99.69%
170.0	29.865	4.686	2048.322	0.23%	99.92%
175.0	11.564	1.482	2049.804	0.07%	99.99%
180.0	1.460	0.156	2049.959	0.01%	100.00%

## ZONAL LUMEN SUMMARY

Zone	Lumens	%Lamp	%Fixt
0-30	73.05	3.56%	3.56%
0-40	153.92	7.51%	7.51%
0-60	427.77	20.87%	20.87%
0-90	1042.56	50.86%	50.86%
0-120	1655.01	80.73%	80.73%
0-180	2049.96	100.00%	100.00%
60-90	614.79	29.99%	29.99%
90-120	612.45	29.88%	29.88%
90-130	763.78	37.26%	37.26%
90-150	951.31	46.41%	46.41%
90-180	1007.24	49.13%	49.13%
0-119.15	1639.97	80.00%	80.00%

## ZONAL LUMEN SUMMARY

0-10	5.19
10-20	20.96
20-30	46.90
30-40	80.87
40-50	118.68
50-60	155.17
60-70	186.00
70-80	208.11
80-90	220.69
90-100	220.59
100-110	207.80
110-120	184.06
120-130	151.33
130-140	113.17
140-150	74.36
150-160	40.07
160-170	14.38
170-180	1.48



C75(Max): —————

C0/C180: —————

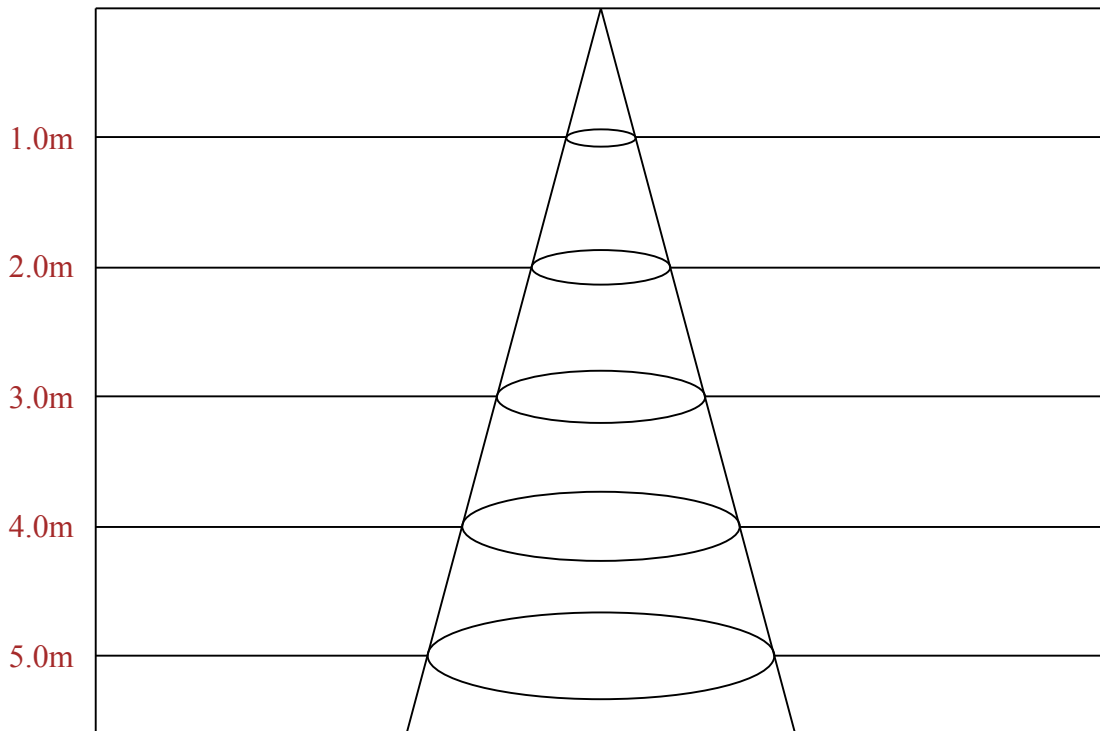
C90/C270: —————

Field angle(10%Imax):C0/180Left:263.6 Right:83.6

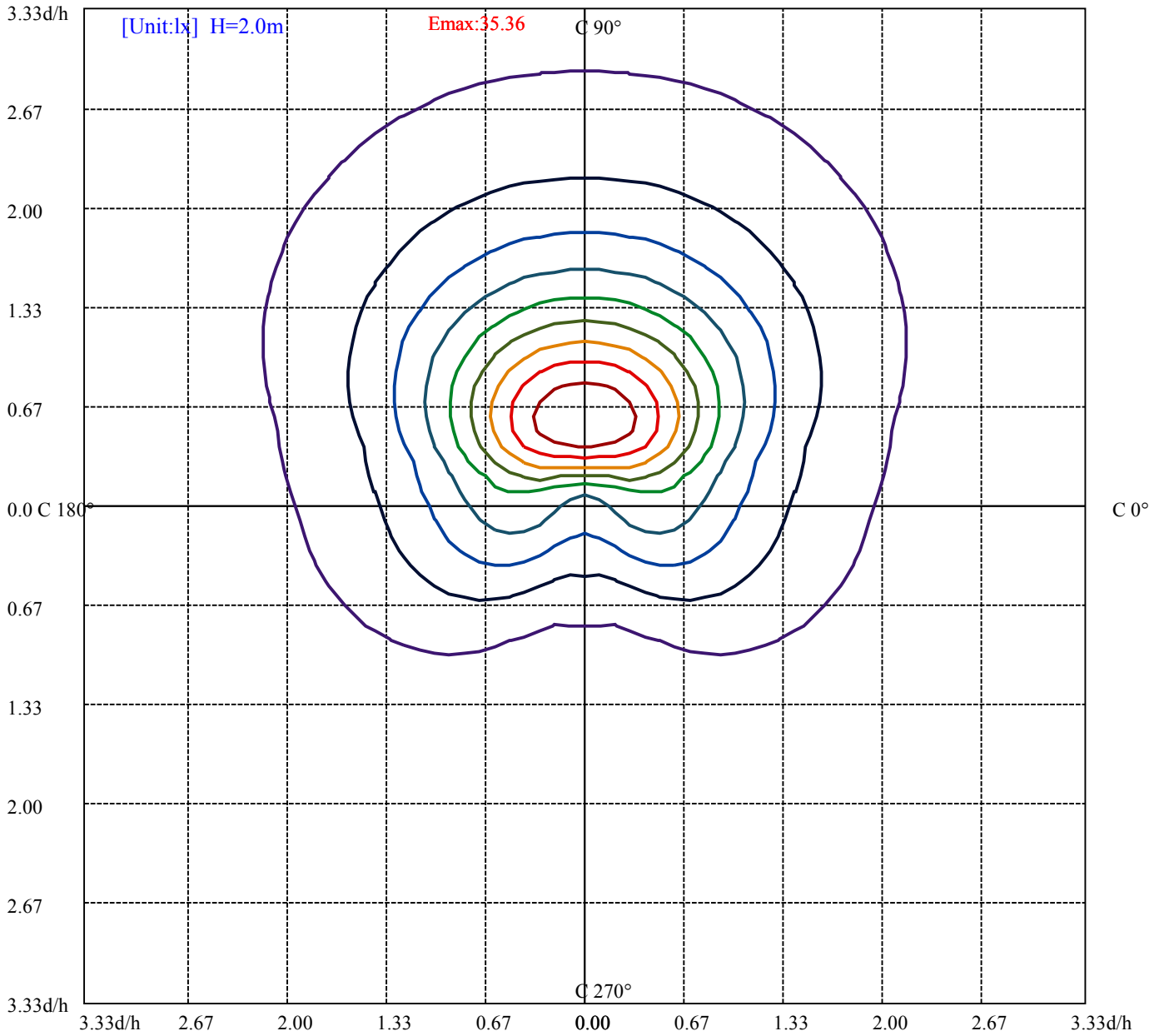
:C90/270Left:104.3 Right:82.9

Beam Angle(50%Imax):C0/180Left:244.3 Right:64.3

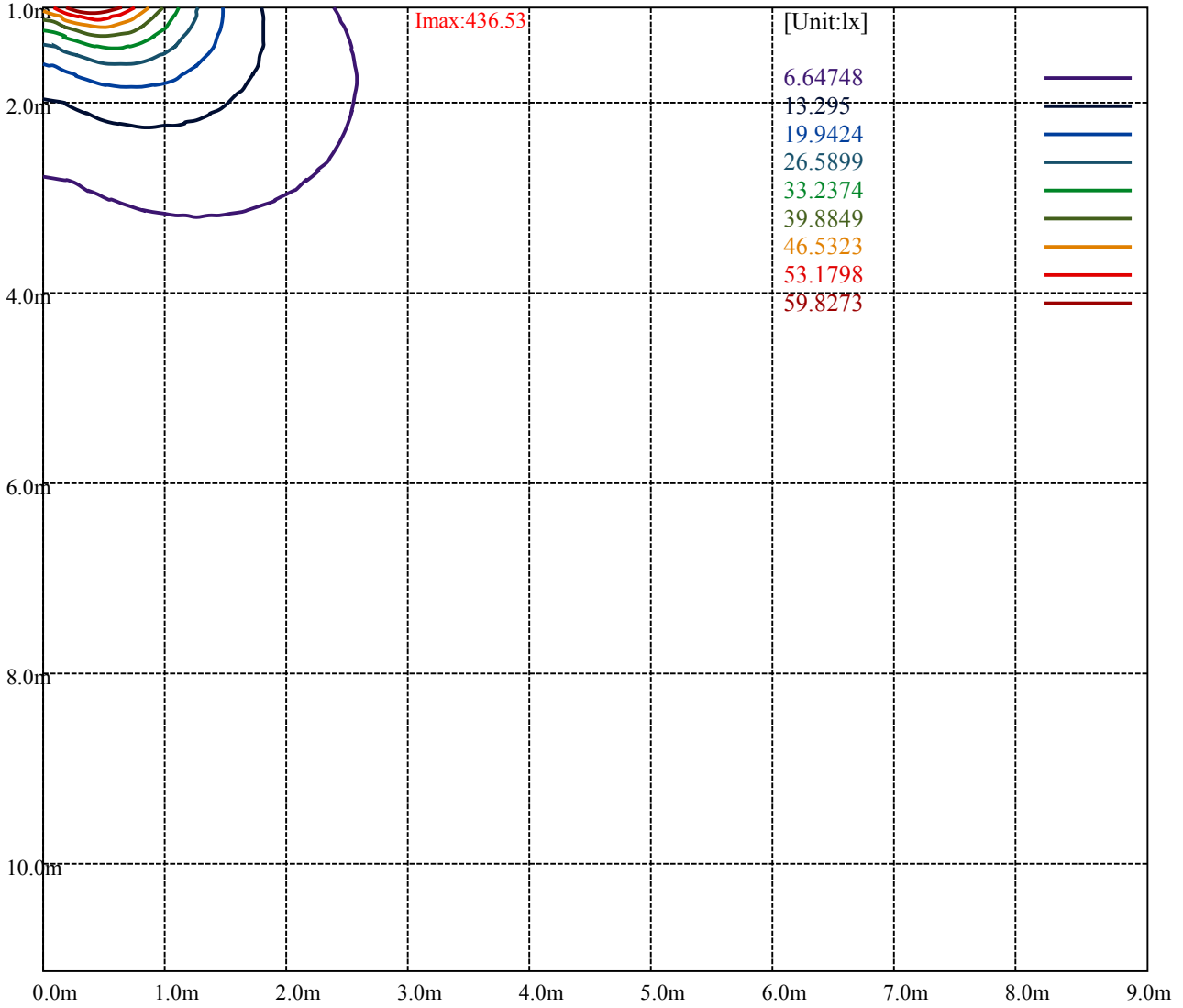
:C90/270Left:60.2 Right:59.4



Max , Ave      Beam angle of C75 plane 223.25



(10%Emax) 3.535875	—
(20%Emax) 7.07175	—
(30%Emax) 10.60763	—
(40%Emax) 14.1435	—
(50%Emax) 17.67937	—
(60%Emax) 21.21525	—
(70%Emax) 24.75113	—
(80%Emax) 28.287	—
(90%Emax) 31.823	—



Luminance Table

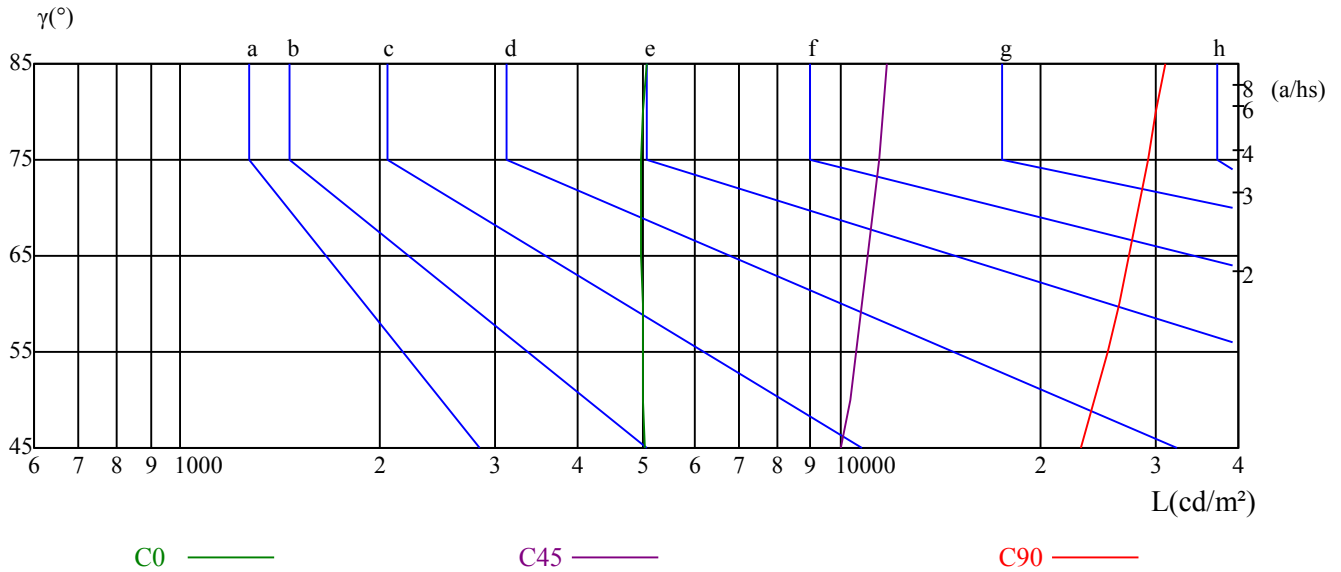
$\gamma$	45	50	55	60	65	70	75	80	85
C0	5034	5023	5000	5000	4976	4990	4981	5026	5079
C45	9990	10304	10567	10795	11000	11203	11398	11576	11769
C90	23132	24272	25404	26434	27329	28240	29188	30066	31084

L(Hor)(65)	L(Ver)(65)	L45(65)	L(Hor)(75)	L(Ver)(75)	L45(75)	L(Hor)(85)	L(Ver)(85)	L45(85)
62600	87718	86752	105373	149857	149542	318540	457198	458135

Glare Table

Glare	Quality	Service Values Illuminance(lx)							
1.15	A	2000	1000	500	<=300				
1.5	B		2000	1000	500	<=300			
1.85	C			2000	1000	500	<=300		
2.2	D				2000	1000	500	<=300	
2.55	E					2000	1000	500	<=300
		a	b	c	d	e	f	g	h

Luminance Limiting Curve





RHOCC	80			70			50			30			10			0
RHOW	50	30	10	50	30	10	50	30	10	50	30	10	50	30	10	0
RCR	COEFFICIENTS OF UTILIZATION RHOFC=20 CU															
0	1.07	1.07	1.07	0.99	0.99	0.99	0.84	0.84	0.84	0.70	0.70	0.70	0.57	0.57	0.57	0.51
1	0.86	0.80	0.74	0.79	0.73	0.69	0.65	0.61	0.57	0.53	0.50	0.47	0.42	0.39	0.37	0.32
2	0.72	0.64	0.57	0.66	0.58	0.52	0.54	0.48	0.43	0.43	0.39	0.35	0.34	0.30	0.27	0.22
3	0.61	0.52	0.45	0.56	0.48	0.41	0.46	0.39	0.34	0.37	0.32	0.27	0.28	0.24	0.21	0.16
4	0.53	0.44	0.36	0.49	0.40	0.33	0.40	0.33	0.28	0.32	0.26	0.22	0.24	0.20	0.17	0.13
5	0.47	0.37	0.30	0.43	0.34	0.28	0.35	0.28	0.23	0.28	0.22	0.18	0.21	0.17	0.14	0.10
6	0.41	0.32	0.25	0.38	0.29	0.23	0.31	0.24	0.19	0.25	0.19	0.15	0.19	0.15	0.11	0.08
7	0.37	0.28	0.22	0.34	0.26	0.20	0.28	0.21	0.16	0.22	0.17	0.13	0.17	0.13	0.10	0.07
8	0.33	0.25	0.19	0.30	0.23	0.17	0.25	0.19	0.14	0.20	0.15	0.11	0.15	0.11	0.08	0.06
9	0.30	0.22	0.16	0.28	0.20	0.15	0.23	0.17	0.12	0.18	0.13	0.10	0.14	0.10	0.07	0.05
10	0.27	0.20	0.14	0.25	0.18	0.13	0.21	0.15	0.11	0.17	0.12	0.09	0.13	0.09	0.06	0.04

## Intensity data(cd)

C/γ(°)	0.0	5.0	10.0	15.0	20.0	25.0	30.0	35.0	40.0
0.0	50.30	51.20	57.48	67.37	77.25	87.13	97.90	108.68	117.66
15.0	50.30	51.20	59.28	70.06	84.43	99.70	115.87	131.14	144.61
30.0	49.40	51.20	62.87	81.74	102.39	125.75	148.20	172.45	194.91
45.0	49.40	52.99	69.16	92.51	120.36	150.00	180.54	211.08	238.92
60.0	49.40	54.79	75.45	103.29	135.63	170.66	202.99	235.33	266.77
75.0	48.50	56.59	79.94	110.48	143.71	179.64	214.67	248.80	278.44
90.0	48.50	56.59	80.84	112.28	146.41	183.23	218.26	249.70	281.14
105.0	48.50	55.69	79.04	107.78	141.92	176.95	211.98	246.11	276.65
120.0	48.50	53.89	74.55	101.50	132.04	165.27	195.81	228.14	257.78
135.0	51.20	52.99	70.06	90.72	115.87	141.92	168.86	195.81	221.86
150.0	48.50	52.10	62.87	79.94	113.17	116.77	135.63	153.59	172.45
165.0	48.50	52.99	60.18	70.96	82.63	94.31	105.99	116.77	128.44
180.0	50.30	53.89	63.77	71.86	81.74	91.62	100.60	109.58	117.66
195.0	50.30	52.99	59.28	67.37	75.45	83.53	91.62	98.80	105.09
210.0	49.40	51.20	55.69	61.08	66.47	72.75	78.14	83.53	87.13
225.0	49.40	49.40	51.20	53.89	56.59	59.28	61.08	62.87	64.67
240.0	49.40	47.60	47.60	47.60	46.71	45.81	44.91	43.11	42.22
255.0	48.50	47.60	45.81	44.01	41.32	38.62	35.93	32.34	28.74
270.0	48.50	46.71	44.91	43.11	41.32	38.62	35.03	32.34	28.74
285.0	48.50	46.71	44.91	43.11	41.32	38.62	35.93	32.34	31.44
300.0	48.50	47.60	45.81	45.81	45.81	46.71	46.71	46.71	46.71
315.0	51.20	47.60	48.50	51.20	54.79	58.38	62.87	66.47	69.16
330.0	48.50	47.60	51.20	56.59	62.87	70.06	77.25	83.53	88.92
345.0	48.50	48.50	53.89	61.08	70.06	79.04	88.02	96.11	103.29
360.0	50.30	51.20	57.48	67.37	77.25	87.13	97.90	108.68	117.66
C/γ(°)	45.0	50.0	55.0	60.0	65.0	70.0	75.0	80.0	85.0
0.0	125.75	132.93	139.22	144.61	148.20	151.80	153.59	155.39	156.29
15.0	158.98	170.66	182.33	192.21	200.30	207.48	211.98	216.47	218.26
30.0	216.47	235.33	253.29	267.66	280.24	291.92	299.10	304.49	308.98
45.0	264.07	289.22	309.88	328.74	344.01	357.48	368.26	375.45	379.94
60.0	296.41	322.45	345.81	367.36	385.33	399.70	411.38	419.46	423.95
75.0	309.88	335.03	359.28	380.84	398.80	414.07	423.95	432.93	436.53
90.0	310.78	336.83	361.08	381.74	397.90	411.38	422.15	428.44	432.93
105.0	307.18	332.33	355.69	377.24	395.21	410.48	420.36	428.44	432.93
120.0	285.63	310.78	333.23	352.99	369.16	383.53	393.41	401.50	405.99
135.0	245.21	265.87	285.63	301.80	316.17	327.84	336.83	343.11	347.60
150.0	189.52	205.69	219.16	231.74	242.51	251.50	257.78	262.27	265.87
165.0	137.42	145.51	152.69	158.98	164.37	167.96	170.66	173.35	176.05
180.0	124.85	131.14	135.63	140.12	142.81	145.51	146.41	148.20	149.10
195.0	110.48	115.87	120.36	123.05	125.75	127.54	128.44	130.24	131.14
210.0	90.72	94.31	96.11	97.90	99.70	100.60	100.60	102.39	103.29
225.0	66.47	67.37	67.37	67.37	67.37	66.47	66.47	67.37	68.26
240.0	40.42	38.62	35.93	34.13	31.44	29.64	27.84	28.74	28.74
255.0	25.15	21.56	17.07	13.47	9.88	6.29	4.49	4.49	5.39
270.0	25.15	21.56	17.96	16.17	9.88	6.29	4.49	4.49	5.39
285.0	26.05	22.46	18.86	15.27	12.57	8.98	7.19	8.08	8.08
300.0	46.71	46.71	46.71	45.81	44.01	43.11	43.11	44.01	45.81
315.0	72.75	75.45	77.25	78.14	79.04	79.94	79.94	80.84	82.63
330.0	94.31	98.80	102.39	105.99	107.78	109.58	111.38	112.28	114.07
345.0	110.48	116.77	121.26	125.75	129.34	131.14	132.93	134.73	135.63
360.0	125.75	132.93	139.22	144.61	148.20	151.80	153.59	155.39	156.29

## Intensity data(cd)

C/ $\gamma$ (°)	90.0	95.0	100.0	105.0	110.0	115.0	120.0	125.0	130.0
0.0	157.19	156.29	155.39	154.49	151.80	148.20	143.71	139.22	132.93
15.0	220.06	219.16	216.47	212.87	206.59	200.30	192.21	182.33	170.66
30.0	310.78	308.98	305.39	299.10	291.02	281.14	269.46	252.39	236.23
45.0	381.74	379.94	375.45	368.26	359.28	346.71	330.54	312.57	290.12
60.0	425.75	423.95	419.46	412.27	400.60	386.23	368.26	348.50	324.25
75.0	438.32	437.42	432.93	424.85	414.07	399.70	381.74	361.08	335.93
90.0	433.83	432.93	428.44	421.26	410.48	396.11	378.14	359.28	335.93
105.0	434.73	432.93	428.44	419.46	407.78	394.31	375.45	354.79	329.64
120.0	407.78	404.19	400.60	391.62	381.74	367.36	351.20	329.64	307.18
135.0	349.40	346.71	342.21	335.93	326.05	315.27	300.90	282.93	262.27
150.0	266.77	265.87	261.38	256.89	250.60	240.72	229.04	216.47	200.30
165.0	176.05	175.15	173.35	170.66	167.07	160.78	155.39	147.30	137.42
180.0	149.10	149.10	148.20	146.41	142.81	138.32	132.93	126.65	119.46
195.0	131.14	130.24	129.34	127.54	124.85	121.26	116.77	111.38	104.19
210.0	103.29	102.39	100.60	99.70	97.01	94.31	90.72	86.23	81.74
225.0	68.26	67.37	65.57	64.67	62.87	61.08	60.18	55.69	52.99
240.0	28.74	28.74	27.84	26.05	26.05	25.15	25.15	24.25	23.35
255.0	5.39	5.39	4.49	4.49	5.39	6.29	8.08	8.98	10.78
270.0	5.39	4.49	4.49	4.49	4.49	5.39	6.29	8.08	9.88
285.0	8.98	8.98	8.98	8.08	8.98	9.88	10.78	11.68	13.47
300.0	46.71	45.81	44.91	44.01	44.01	43.11	42.22	41.32	40.42
315.0	83.53	83.53	82.63	81.74	79.94	78.14	76.35	72.75	69.16
330.0	114.97	114.07	114.07	112.28	110.48	107.78	104.19	99.70	94.31
345.0	136.53	135.63	135.63	133.83	132.04	129.34	124.85	120.36	114.07
360.0	157.19	156.29	155.39	154.49	151.80	148.20	143.71	139.22	132.93
C/ $\gamma$ (°)	135.0	140.0	145.0	150.0	155.0	160.0	165.0	170.0	175.0
0.0	124.85	115.87	105.09	93.41	81.74	65.57	47.60	29.64	12.57
15.0	158.08	143.71	129.34	112.28	94.31	76.35	55.69	35.03	14.37
30.0	216.47	194.91	171.56	148.20	122.16	97.01	70.96	43.11	15.27
45.0	265.87	238.92	211.08	180.54	150.00	117.66	87.13	53.89	19.76
60.0	297.30	267.66	235.33	202.10	167.96	132.04	97.01	61.08	24.25
75.0	308.08	280.24	247.90	212.87	176.95	141.02	102.39	65.57	26.05
90.0	308.98	278.44	247.01	212.87	178.74	141.02	104.19	66.47	26.95
105.0	301.80	273.05	240.72	206.59	169.76	135.63	98.80	62.87	25.15
120.0	281.14	252.39	221.86	189.52	156.29	123.05	88.92	55.69	22.46
135.0	239.82	214.67	188.62	160.78	132.04	104.19	76.35	46.71	17.07
150.0	183.23	163.47	143.71	123.95	102.39	81.74	59.28	35.03	12.57
165.0	127.54	115.87	103.29	90.72	77.25	61.98	44.01	27.84	10.78
180.0	111.38	101.50	91.62	79.04	68.26	52.99	39.52	23.35	8.98
195.0	97.01	88.02	79.04	69.16	57.48	54.79	33.23	17.96	6.29
210.0	75.45	74.55	61.98	54.79	45.81	36.83	26.05	12.57	3.59
225.0	49.40	45.81	41.32	36.83	33.23	26.95	16.17	7.19	0.90
240.0	23.35	22.46	21.56	19.76	18.86	15.27	8.08	2.69	0.90
255.0	11.68	13.47	15.27	14.37	13.47	8.08	2.69	0.90	0.90
270.0	11.68	12.57	13.47	13.47	11.68	5.39	1.80	0.90	0.90
285.0	14.37	15.27	15.27	14.37	13.47	9.88	5.39	1.80	0.90
300.0	38.62	35.93	32.34	29.64	26.95	21.56	14.37	8.08	2.69
315.0	65.57	59.28	53.89	48.50	42.22	35.03	25.15	14.37	5.39
330.0	88.92	81.74	73.65	66.47	57.48	45.81	35.03	19.76	8.08
345.0	107.78	98.80	89.82	79.94	67.37	52.99	39.52	24.25	10.78
360.0	124.85	115.87	105.09	93.41	81.74	65.57	47.60	29.64	12.57

Intensity data(cd)

C/γ(°)	180.0
0.0	5.39
15.0	1.80
30.0	2.69
45.0	2.69
60.0	2.69
75.0	1.80
90.0	1.80
105.0	2.69
120.0	3.59
135.0	3.59
150.0	3.59
165.0	2.69
180.0	0.00
195.0	0.00
210.0	0.00
225.0	0.00
240.0	0.00
255.0	0.00
270.0	0.00
285.0	0.00
300.0	0.00
315.0	0.00
330.0	0.00
345.0	0.00
360.0	5.39