

---

乐达凯

---

Client:

LumCAT: CL26-15-26DB-952C5-WH-GD-5000K

Luminaire: LED灯具

Report No:

Ballast type:

Test No: LCZP23030076

Voltage(V): 119.940

LampCAT:

Current(A): 0.241

Lamp flux(lm): 2028.7

Power (W): 27.030

Number of Lamps: 1

PF: 0.936

Length(mm): -330

Width(mm): -330

Phm Type: C

Height(mm): 0

---

Photometric Results

---

Lumens(lm): 2028.74, Efficiency(%): 100.00% , Luminous Efficacy(lm/W): 75.06

Central intensity(cd): 525.897, Maximum intensity(cd): 584.231

Angle of maximum intensity: C=0.0  $\gamma$ =35.0

Beam Angle(50%Imax): [C0/180]Total=123.2

[C90/270]Total=123.6

Field angle(10%Imax): [C0/180]Total=166.2

[C90/270]Total=166.0

Maximum s/h(1/2): C0\_180=1.65 C90\_270=1.65

Maximum s/h(1/4): C0\_180=1.66 C90\_270=1.66

Up flux rate of lamp(%): 0.35%

Down flux rate of lamp(%): 99.65%

Up flux rate of LUM(%): 0.35%

Down flux rate of LUM(%): 99.65%

CIE Type : Direct lighting

Output flux ratio in  $\pi$  solid angle : 78.602%

## 乐达凯 CL26-15-26DB-952C5-WH-GD-5000K

Zonal flux distribution table

Appendix Page: 2 Total:12

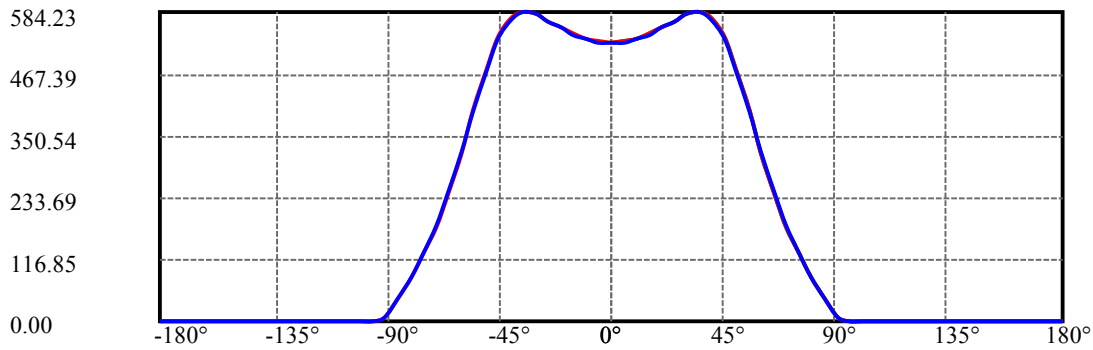
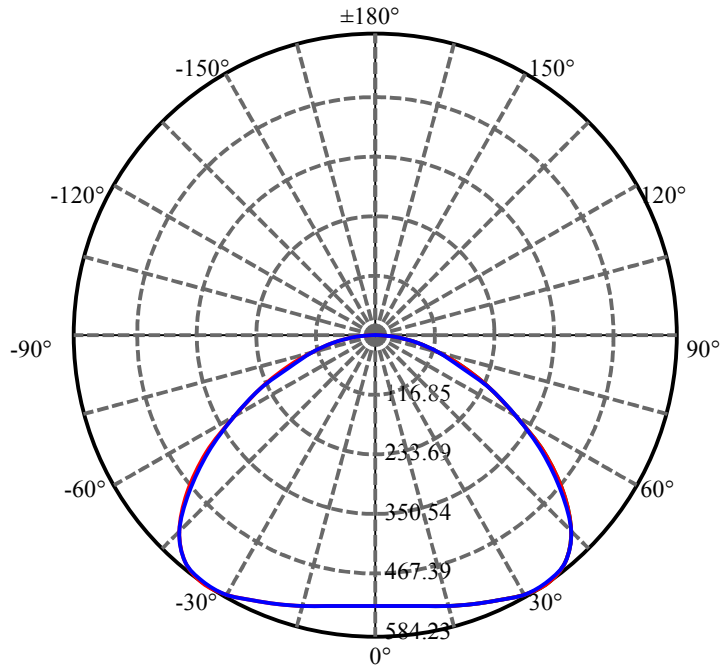
$\gamma(^{\circ})$	Average I(cd)	Zonal F(lm)	Sum F(lm)	Eff Flux(%)	Eff Sum(%)
0.0	525.897	0.000	0	0.00%	0.00%
5.0	527.655	12.595	12.595	0.62%	0.62%
10.0	533.082	37.946	50.541	1.87%	2.49%
15.0	541.802	63.761	114.302	3.14%	5.63%
20.0	553.594	90.276	204.578	4.45%	10.08%
25.0	567.029	117.533	322.111	5.79%	15.88%
30.0	578.179	144.927	467.038	7.14%	23.02%
35.0	582.330	170.893	637.931	8.42%	31.44%
40.0	570.914	192.410	830.341	9.48%	40.93%
45.0	536.003	204.955	1035.296	10.10%	51.03%
50.0	473.834	204.052	1239.348	10.06%	61.09%
55.0	397.904	189.545	1428.893	9.34%	70.43%
60.0	319.133	165.741	1594.634	8.17%	78.60%
65.0	242.443	136.520	1731.154	6.73%	85.33%
70.0	178.110	106.487	1837.641	5.25%	90.58%
75.0	127.100	79.777	1917.418	3.93%	94.51%
80.0	83.607	56.379	1973.797	2.78%	97.29%
85.0	41.689	34.046	2007.843	1.68%	98.97%
90.0	8.494	13.741	2021.584	0.68%	99.65%
95.0	0.449	2.449	2024.032	0.12%	99.77%
100.0	0.487	0.254	2024.287	0.01%	99.78%
105.0	0.599	0.290	2024.577	0.01%	99.79%
110.0	0.562	0.303	2024.881	0.01%	99.81%
115.0	0.562	0.285	2025.165	0.01%	99.82%
120.0	0.637	0.292	2025.457	0.01%	99.84%
125.0	0.898	0.355	2025.812	0.02%	99.86%
130.0	0.898	0.391	2026.202	0.02%	99.87%
135.0	0.898	0.363	2026.565	0.02%	99.89%
140.0	0.898	0.333	2026.898	0.02%	99.91%
145.0	0.898	0.300	2027.198	0.01%	99.92%
150.0	0.973	0.276	2027.473	0.01%	99.94%
155.0	1.347	0.294	2027.767	0.01%	99.95%
160.0	1.646	0.314	2028.081	0.02%	99.97%
165.0	1.796	0.284	2028.365	0.01%	99.98%
170.0	1.796	0.213	2028.578	0.01%	99.99%
175.0	1.796	0.129	2028.706	0.01%	100.00%
180.0	0.935	0.033	2028.739	0.00%	100.00%

## ZONAL LUMEN SUMMARY

Zone	Lumens	%Lamp	%Fixt
0-30	467.04	23.02%	23.02%
0-40	830.34	40.93%	40.93%
0-60	1594.63	78.60%	78.60%
0-90	2021.58	99.65%	99.65%
0-120	2025.46	99.84%	99.84%
0-180	2028.74	100.00%	100.00%
60-90	426.95	21.05%	21.05%
90-120	3.87	0.19%	0.19%
90-130	4.62	0.23%	0.23%
90-150	5.89	0.29%	0.29%
90-180	7.12	0.35%	0.35%
0-61.04	1622.99	80.00%	80.00%

## ZONAL LUMEN SUMMARY

0-10	50.54
10-20	154.04
20-30	262.46
30-40	363.30
40-50	409.01
50-60	355.29
60-70	243.01
70-80	136.16
80-90	47.79
90-100	2.70
100-110	0.59
110-120	0.58
120-130	0.75
130-140	0.70
140-150	0.58
150-160	0.61
160-170	0.50
170-180	0.13



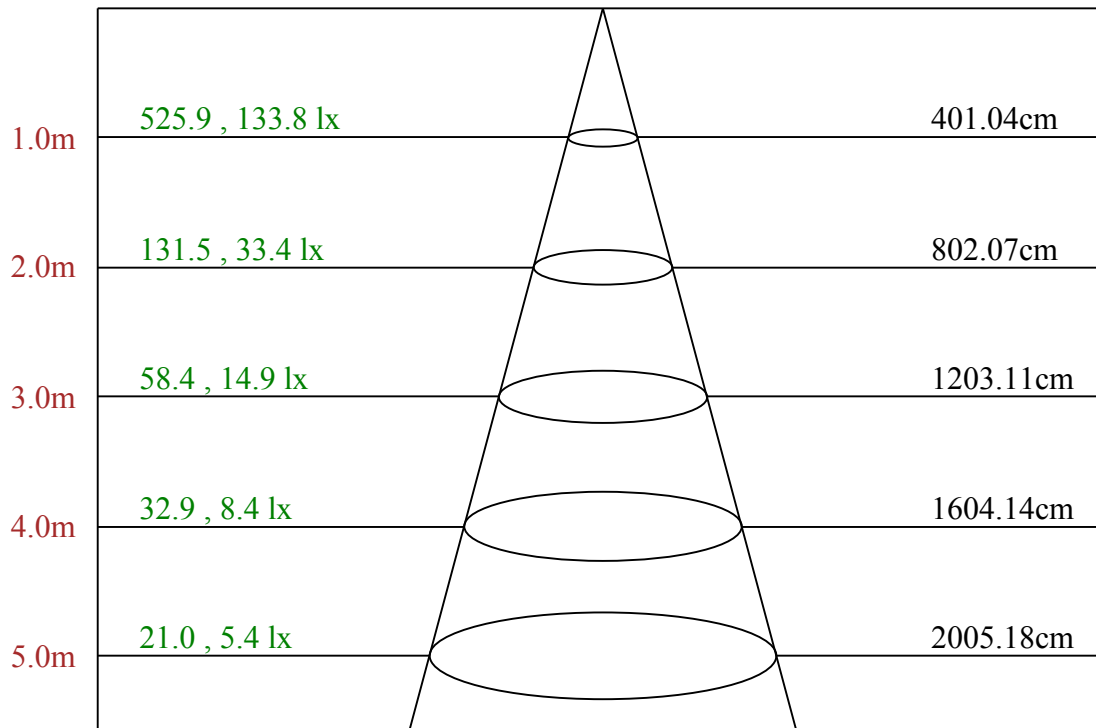
C0(Max): ———

C0/C180: ———

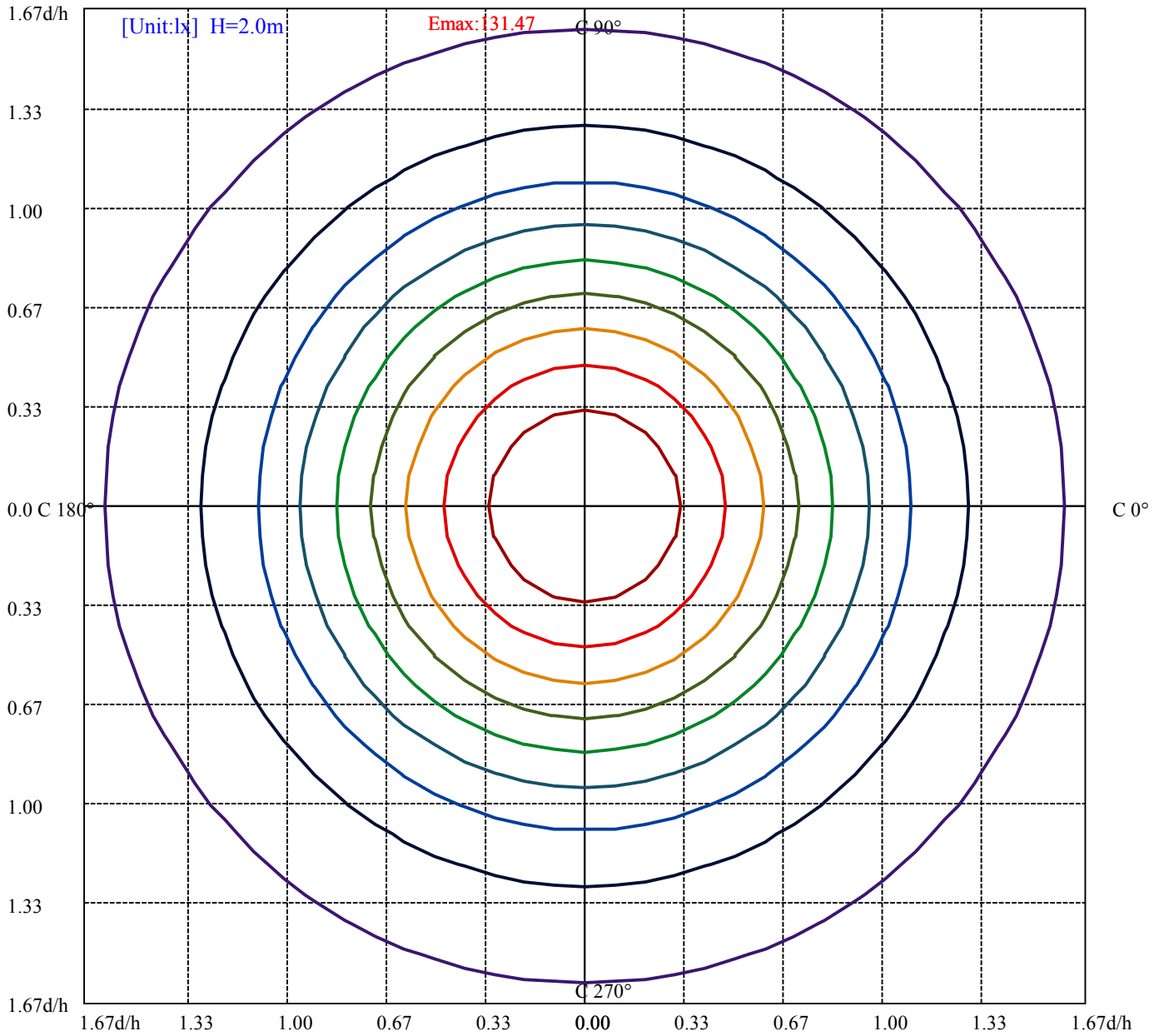
C90/C270: ———

Field angle(10%Imax):C0/180Left:118.1 Right:48.1  
:C90/270Left:118.0 Right:48.0

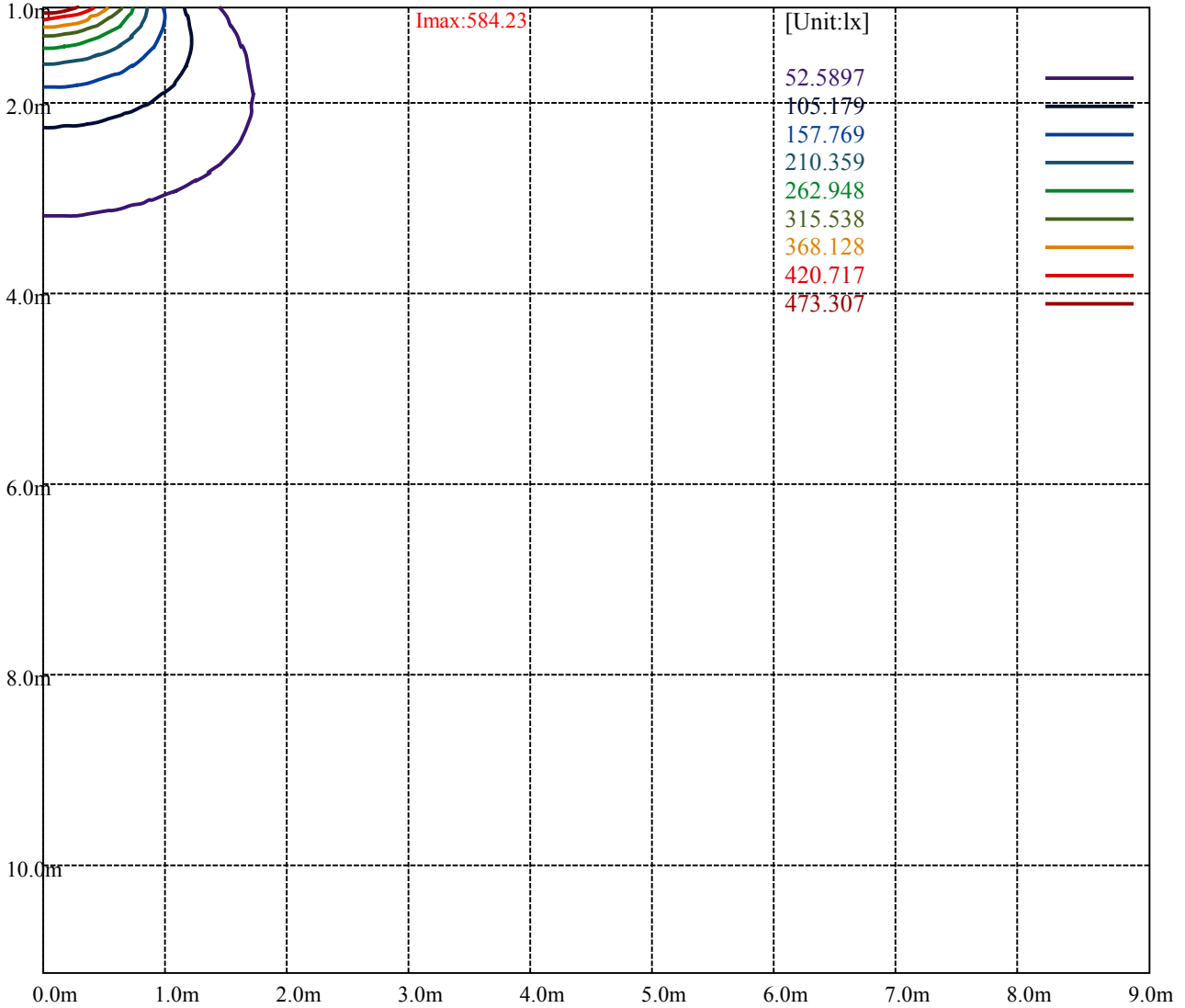
Beam Angle(50%Imax):C0/180Left:96.6 Right:26.6  
:C90/270Left:96.8 Right:26.8



Max , Ave      Beam angle of C0 plane 126.99



(10%Emax) 13.14742	—
(20%Emax) 26.29475	—
(30%Emax) 39.44225	—
(40%Emax) 52.58975	—
(50%Emax) 65.737	—
(60%Emax) 78.8845	—
(70%Emax) 92.032	—
(80%Emax) 105.1793	—
(90%Emax) 118.3268	—



Luminance Table

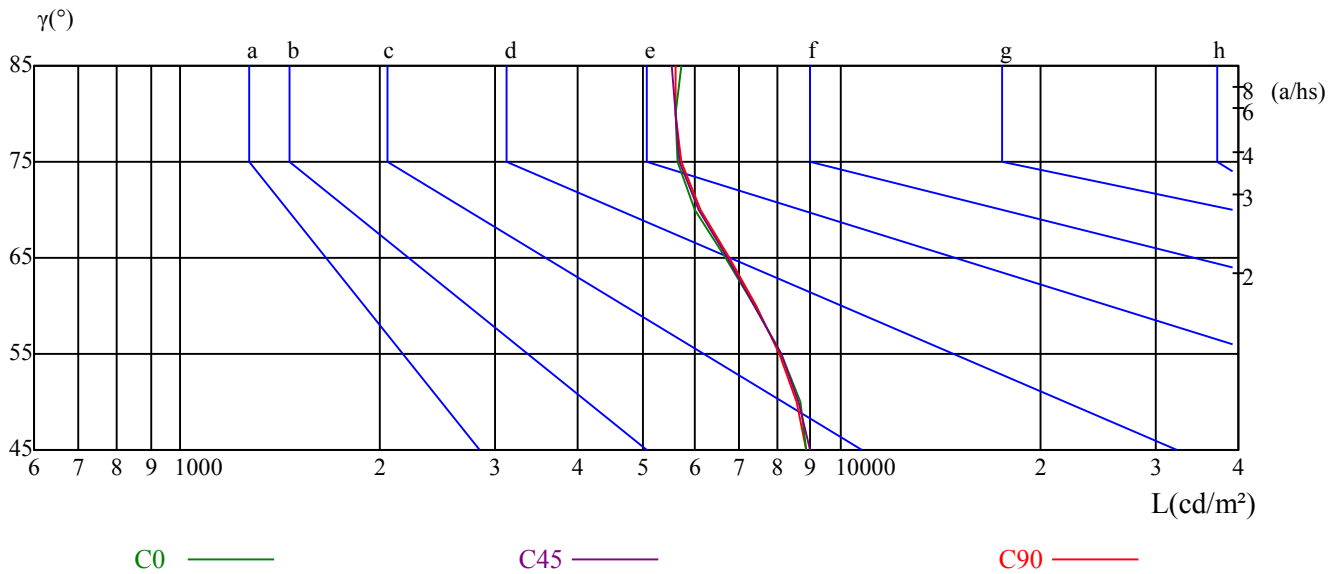
$\gamma$	45	50	55	60	65	70	75	80	85
C0	8886	8657	8126	7409	6675	6028	5670	5624	5751
C45	8957	8628	8113	7417	6720	6087	5685	5639	5557
C90	8837	8583	8086	7444	6764	6141	5715	5639	5617

L(Hor)(65)	L(Ver)(65)	L45(65)	L(Hor)(75)	L(Ver)(75)	L45(75)	L(Hor)(85)	L(Ver)(85)	L45(85)
6675	6764	6720	5670	5715	5685	5751	5617	5557

Glare Table

Glare	Quality	Service Values Illuminance(lx)							
1.15	A	2000	1000	500	<=300				
1.5	B		2000	1000	500	<=300			
1.85	C			2000	1000	500	<=300		
2.2	D				2000	1000	500	<=300	
2.55	E					2000	1000	500	<=300
		a	b	c	d	e	f	g	h

Luminance Limiting Curve





RHOCC	80			70			50			30			10			0
RHOW	50	30	10	50	30	10	50	30	10	50	30	10	50	30	10	0
RCR	COEFFICIENTS OF UTILIZATION RHOFC=20 CU															
0	1.19	1.19	1.19	1.16	1.16	1.16	1.11	1.11	1.11	1.06	1.06	1.06	1.02	1.02	1.02	1.00
1	1.03	0.99	0.95	1.01	0.97	0.93	0.97	0.93	0.90	0.93	0.90	0.88	0.89	0.87	0.85	0.83
2	0.90	0.83	0.77	0.88	0.81	0.76	0.84	0.79	0.74	0.81	0.76	0.72	0.78	0.74	0.71	0.68
3	0.78	0.70	0.63	0.77	0.69	0.63	0.74	0.67	0.61	0.71	0.65	0.60	0.68	0.63	0.59	0.57
4	0.69	0.60	0.53	0.68	0.59	0.53	0.65	0.58	0.52	0.63	0.56	0.51	0.60	0.55	0.50	0.48
5	0.61	0.52	0.45	0.60	0.51	0.45	0.58	0.50	0.44	0.56	0.49	0.44	0.54	0.48	0.43	0.41
6	0.55	0.46	0.39	0.54	0.45	0.39	0.52	0.44	0.38	0.50	0.43	0.38	0.49	0.42	0.38	0.36
7	0.49	0.40	0.34	0.49	0.40	0.34	0.47	0.39	0.34	0.45	0.39	0.33	0.44	0.38	0.33	0.31
8	0.45	0.36	0.30	0.44	0.36	0.30	0.43	0.35	0.30	0.41	0.35	0.30	0.40	0.34	0.29	0.27
9	0.41	0.32	0.27	0.40	0.32	0.27	0.39	0.32	0.27	0.38	0.31	0.26	0.37	0.31	0.26	0.24
10	0.38	0.29	0.24	0.37	0.29	0.24	0.36	0.29	0.24	0.35	0.28	0.24	0.34	0.28	0.24	0.22

乐达凯 CL26-15-26DB-952C5-WH-GD-5000K

Appendix Page: 10 Total:12

Intensity data(cd)

C/γ(°)	0.0	5.0	10.0	15.0	20.0	25.0	30.0	35.0	40.0
0.0	525.90	526.78	531.20	538.27	547.99	560.37	574.51	583.35	579.81
15.0	525.90	525.90	528.57	535.68	544.58	557.93	570.39	578.40	575.73
30.0	525.90	524.11	526.79	533.04	541.97	553.58	566.08	573.22	569.65
45.0	525.90	525.00	527.69	533.08	542.05	553.72	564.49	570.77	565.38
60.0	525.90	524.10	526.80	532.19	540.28	551.07	560.96	567.25	562.75
75.0	525.90	525.00	525.90	531.30	539.40	549.31	559.22	564.62	560.12
90.0	525.90	524.10	525.00	530.40	538.50	548.41	558.31	564.62	560.12
105.0	525.90	524.09	525.90	531.31	538.53	548.45	558.37	564.68	561.98
120.0	525.90	524.09	525.90	530.41	538.53	548.45	559.27	566.49	563.78
135.0	525.90	524.99	526.80	532.22	540.35	550.29	562.04	569.27	567.46
150.0	525.90	524.09	526.80	532.22	541.26	552.10	562.94	571.98	571.08
165.0	525.90	524.09	527.70	533.13	542.16	554.81	567.46	575.59	574.69
180.0	525.90	529.43	536.50	547.11	559.48	573.62	583.35	585.12	566.55
195.0	525.90	529.46	536.57	547.25	559.71	574.84	585.52	587.30	568.61
210.0	525.90	529.47	537.50	548.22	561.61	576.79	587.50	590.18	571.43
225.0	525.90	530.38	539.36	550.13	565.38	580.64	592.31	593.20	576.15
240.0	525.90	531.29	539.38	551.97	567.25	583.43	596.02	596.92	578.04
255.0	525.90	531.30	540.30	552.91	569.12	586.23	598.84	600.64	580.83
270.0	525.90	531.30	541.21	553.81	570.02	587.13	599.74	600.64	581.73
285.0	525.90	531.31	541.23	553.86	570.10	587.24	599.86	600.77	579.12
300.0	525.90	531.31	540.33	552.96	569.20	586.33	598.06	597.16	577.31
315.0	525.90	531.32	539.45	552.10	568.37	583.73	595.47	594.57	574.69
330.0	525.90	530.41	538.55	550.29	566.56	581.02	587.34	591.86	570.17
345.0	525.90	530.41	538.55	549.39	563.85	579.21	588.25	587.34	564.75
360.0	525.90	526.78	531.20	538.27	547.99	560.37	574.51	583.35	579.81
C/γ(°)	45.0	50.0	55.0	60.0	65.0	70.0	75.0	80.0	85.0
0.0	555.95	503.80	432.21	349.12	271.34	200.64	145.84	100.76	63.64
15.0	549.92	498.31	426.23	347.04	267.84	198.43	144.15	99.66	62.29
30.0	545.54	492.86	419.65	340.18	264.29	198.22	144.64	100.00	61.61
45.0	541.15	488.20	419.10	340.13	265.64	197.44	143.59	98.72	61.03
60.0	535.79	483.65	415.32	339.81	264.30	195.98	142.94	97.99	60.23
75.0	535.80	483.57	415.13	338.59	262.95	198.11	144.08	99.06	60.33
90.0	536.70	484.47	416.03	339.49	265.65	198.11	144.08	99.06	60.33
105.0	537.62	486.21	416.75	340.98	265.20	197.55	143.43	98.32	59.54
120.0	542.13	491.62	423.06	343.68	267.01	200.26	145.23	99.23	61.34
135.0	546.68	496.98	427.40	346.08	271.08	200.60	144.58	100.30	61.44
150.0	550.29	500.60	431.92	352.40	271.98	200.60	145.48	99.40	61.44
165.0	554.81	507.82	437.34	356.02	274.70	205.12	148.19	101.20	63.25
180.0	518.83	448.12	365.03	284.60	211.24	152.02	105.18	66.29	22.10
195.0	523.23	453.82	371.06	287.42	215.34	153.94	106.78	67.63	21.36
210.0	523.22	454.47	374.11	291.07	216.97	157.14	108.93	68.75	22.32
225.0	527.69	457.69	374.23	294.36	219.87	159.74	109.49	69.10	21.54
240.0	530.39	460.27	376.67	294.86	221.15	160.92	110.57	69.22	22.47
255.0	532.20	460.16	379.11	297.17	223.33	162.09	110.76	69.34	23.41
270.0	532.20	459.26	377.31	297.17	223.33	161.19	108.96	68.44	23.41
285.0	531.31	460.95	377.96	294.97	220.10	160.57	131.70	68.56	22.55
300.0	526.80	455.54	375.25	330.15	219.20	157.86	106.44	66.75	21.65
315.0	551.20	454.51	371.38	288.25	215.06	154.52	105.72	66.87	21.69
330.0	520.47	449.09	367.77	284.63	213.25	152.71	105.72	65.96	21.69
345.0	514.15	440.05	359.63	281.02	207.83	150.90	103.91	65.96	19.88
360.0	555.95	503.80	432.21	349.12	271.34	200.64	145.84	100.76	63.64

乐达凯 CL26-15-26DB-952C5-WH-GD-5000K

Intensity data(cd)

C/γ(°)	90.0	95.0	100.0	105.0	110.0	115.0	120.0	125.0	130.0
0.0	16.79	0.00	0.00	0.00	0.00	0.00	0.00	0.88	0.88
15.0	17.80	0.00	0.00	0.00	0.00	0.00	0.00	0.89	0.89
30.0	16.96	0.00	0.00	0.00	0.00	0.00	0.00	0.89	0.89
45.0	15.26	0.00	0.00	0.90	0.00	0.00	0.00	0.90	0.90
60.0	16.18	0.00	0.90	0.90	0.00	0.00	0.00	0.90	0.90
75.0	15.31	0.00	0.00	0.90	0.90	0.00	0.00	0.90	0.90
90.0	14.41	0.00	0.00	0.90	0.90	0.00	0.90	0.90	0.90
105.0	15.33	0.00	0.00	0.00	0.90	0.90	0.90	0.90	0.90
120.0	15.33	0.00	0.00	0.00	0.00	0.00	0.90	0.90	0.90
135.0	15.36	0.00	0.00	0.00	0.00	0.00	0.90	0.90	0.90
150.0	17.17	0.00	0.00	0.00	0.00	0.90	0.90	0.90	0.90
165.0	17.17	0.00	0.00	0.00	0.00	0.90	0.00	0.90	0.90
180.0	0.88	0.88	0.88	0.88	0.88	0.88	0.88	0.88	0.88
195.0	0.89	0.89	0.89	0.89	0.89	0.89	0.89	0.89	0.89
210.0	0.89	0.89	0.89	0.89	0.89	0.89	0.89	0.89	0.89
225.0	0.90	0.90	0.90	0.90	0.90	0.90	0.90	0.90	0.90
240.0	0.90	0.90	0.90	0.90	0.90	0.90	0.90	0.90	0.90
255.0	0.90	0.90	0.90	0.90	0.90	0.90	0.90	0.90	0.90
270.0	0.90	0.90	0.90	0.90	0.90	0.90	0.90	0.90	0.90
285.0	0.90	0.90	0.90	0.90	0.90	0.90	0.90	0.90	0.90
300.0	0.90	0.90	0.90	0.90	0.90	0.90	0.90	0.90	0.90
315.0	0.90	0.90	0.90	0.90	0.90	0.90	0.90	0.90	0.90
330.0	0.90	0.90	0.90	0.90	0.90	0.90	0.90	0.90	0.90
345.0	0.90	0.90	0.90	0.90	0.90	0.90	0.90	0.90	0.90
360.0	16.79	0.00	0.00	0.00	0.00	0.00	0.00	0.88	0.88
C/γ(°)	135.0	140.0	145.0	150.0	155.0	160.0	165.0	170.0	175.0
0.0	0.88	0.88	0.88	0.88	1.77	1.77	1.77	1.77	1.77
15.0	0.89	0.89	0.89	0.89	1.78	1.78	1.78	1.78	1.78
30.0	0.89	0.89	0.89	0.89	1.79	1.79	1.79	1.79	1.79
45.0	0.90	0.90	0.90	0.90	1.79	1.79	1.79	1.79	1.79
60.0	0.90	0.90	0.90	0.90	1.80	1.80	1.80	1.80	1.80
75.0	0.90	0.90	0.90	0.90	1.80	1.80	1.80	1.80	1.80
90.0	0.90	0.90	0.90	1.80	1.80	1.80	1.80	1.80	1.80
105.0	0.90	0.90	0.90	0.90	1.80	1.80	1.80	1.80	1.80
120.0	0.90	0.90	0.90	0.90	1.80	1.80	1.80	1.80	1.80
135.0	0.90	0.90	0.90	1.81	1.81	1.81	1.81	1.81	1.81
150.0	0.90	0.90	0.90	0.90	1.81	1.81	1.81	1.81	1.81
165.0	0.90	0.90	0.90	0.90	1.81	1.81	1.81	1.81	1.81
180.0	0.88	0.88	0.88	0.88	1.77	1.77	1.77	1.77	1.77
195.0	0.89	0.89	0.89	0.89	1.78	1.78	1.78	1.78	1.78
210.0	0.89	0.89	0.89	0.89	1.79	1.79	1.79	1.79	1.79
225.0	0.90	0.90	0.90	0.90	1.79	1.79	1.79	1.79	1.79
240.0	0.90	0.90	0.90	0.90	1.80	1.80	1.80	1.80	1.80
255.0	0.90	0.90	0.90	0.90	1.80	1.80	1.80	1.80	1.80
270.0	0.90	0.90	0.90	0.90	1.80	1.80	1.80	1.80	1.80
285.0	0.90	0.90	0.90	0.90	1.80	1.80	1.80	1.80	1.80
300.0	0.90	0.90	0.90	0.90	1.80	1.80	1.80	1.80	1.80
315.0	0.90	0.90	0.90	0.90	1.81	1.81	1.81	1.81	1.81
330.0	0.90	0.90	0.90	0.90	1.81	1.81	1.81	1.81	1.81
345.0	0.90	0.90	0.90	0.90	1.81	1.81	1.81	1.81	1.81
360.0	0.88	0.88	0.88	0.88	1.77	1.77	1.77	1.77	1.77

Intensity data(cd)

C/γ(°)	180.0
0.0	1.77
15.0	2.67
30.0	1.79
45.0	1.79
60.0	1.80
75.0	1.80
90.0	1.80
105.0	1.80
120.0	1.80
135.0	1.81
150.0	1.81
165.0	1.81
180.0	0.00
195.0	0.00
210.0	0.00
225.0	0.00
240.0	0.00
255.0	0.00
270.0	0.00
285.0	0.00
300.0	0.00
315.0	0.00
330.0	0.00
345.0	0.00
360.0	1.77